

Focus

March 2024

Eaton Bray,
Edlesborough,
Northall & Dagnall



Lunch , Evening Meals & Takeaways

Childrens Sandpit • Outdoor Seating



Call us to book on:
01442 843020

Order a takeaway on:
01442 842277
(delivery available to the villages)

Bespoke menus available | Vegetarian, vegan & gluten-free options available

Looking to visit Canada...

TOP 8 UK CANADA AGENT AS RECOGNISED BY DESTINATION CANADA

For help with creating the best itinerary for you, please call or email us

Canada specialist since 2001 • Extensive experience to arrange every detail

Friendly, honest advice from an independent travel agency

Specialists in tailor-making holidays to destinations worldwide

Using fully bonded tour operators • No booking fees



Travel Impressions

01442 890265

enquiries@travelimpressions.co.uk
www.travelimpressions.co.uk

Suite 4, George House, 64 High Street, Tring, Herts. HP23 4AF

The Focus Magazine Committee

Editor: Sally Siddons 01525 221733

34 Wallace Drive, Eaton Bray

Email: sallysid@hotmail.com

Business Advertising: Sally Taylor,

Butler's Folly, South End Lane,

Northall LU6 2EX 01525 221576

Email advertising @thefocusmagazine.co.uk

Chair: Ken Coates

10 The Nurseries, Eaton Bray 220868

Circulation Manager: Angela Dunford

1 Knolls View, Leighton Road, Northall

01525 221944, angela.dunford29@gmail.com

Treasurer: Steve Dunford, 01525 221944

Committee Member: Sue Tucker, 01525

223004, susantucker053@gmail.com

Design and Layout: Tracey Moren

(Moren Associates Limited) 01525 229695

Printed by: Priory Press Limited

Dunstable 01582 699851

Kindly Note

Articles and events for publication must be submitted to the Editor by the 10th of the preceding month. August/September and December/January are joint issues and articles must be submitted by 10th July and 10th November respectively. If an event falls in the first week of the month, it is advisable to submit the details into Focus a month earlier. The magazines are not delivered from the printers until the first of the month and it takes a few days for them all to be circulated throughout the villages by our volunteer distributors.

✍️ Editor

Focus accepts no responsibility as to the accuracy or content of any advertising or articles published in 'this' magazine, neither do they reflect the opinion of members of the Committee.

© Articles published in Focus may not be reproduced without permission.



Defibrillator Locations

These units are registered with the Ambulance Services. To access them, please phone 999. You will be given the access code and the location of the unit will be confirmed. The defibrillator is easy and safe to use. The units can be found on the outside walls of the following locations:

Dagnall: Red Lion Public House & Munns Farm Shop

Eaton Bray: The Coffee Tavern

Northall: The Swan Public House

Edlesborough: Edlesborough Memorial Hall &
Baptist Church, Summerleys

Edlesborough Surgery

01525 221630 www.edlesboroughsurgery.co.uk

Village Diary



Weekly

- Mon-Sun St. Mary's Edlesborough opening times are currently very limited
Please see notice board and website
- Mon-Fri (term) Eaton Bray Pre-school, Eaton Bray Lower School, 01525 220468, admin@eba.ec
- Mon-Fri (term) Dagnall Under 5's, Dagnall Village Hall, 9.15am - 12.15pm, Mrs Ann Tobin 07816 358342
- Mon-Fri (term) Edlesborough Primary Academy Pre-School, 01525 220431, epamanager@epa-primary.org
- Mon-Fri (term) Totternhoe Pre-school, Totternhoe CE Academy, 01582 662959, totternhoeoffice@tot.dsamat.co.uk
- Mondays Pilates, 10.45am, Totternhoe Memorial Hall, Lisa: 07832 230774
- Mondays Dagnall Community Choir, All Saints Church 7.45-9.45pm, w:dagnall-community-choir.co.uk
- Mondays (term) Movement and exercise classes with a dance flavour, Northall VH 2-3.30. Jan 01442 864271.
- Mondays KFFPA ISTD ballet classes, Edlesborough Memorial Hall 4pm-6.30pm (4years+)
Contact Kiri 07988161043 or visit Facebook page 'KF PerformingArts/KFFPA' for info
- Mondays Cubs (8-10 1/2 years old), 6.30pm - 8pm, 1st Eaton Bray & Edlesborough Scout Hut, High Street, Edlesborough. Contact Liz Coates 01442 842550
- Mondays Yoga, 6:45pm, Edlesborough Memorial Hall, contact 07837 727302
- Mondays Barre, 8pm, Edlesborough Memorial Hall, contact 07837 727302
- Mondays Eaton Bray Tennis Club - 4-7pm mini / junior tennis coaching
- Mondays Eaton Bray Tennis Club - 7-8pm Adult Coaching 'Get Back Into Tennis'
- Tuesdays Pilates, 10-11am, Eaton Bray Village Hall, Nicky Roussou 07861 162680
- Tuesdays Totternhoe Baby & Toddler Group, 9.30-11.15am, St. Giles Church Hall, Ruth Allen, 01525 222468 or 07796 265174 or email ruthallen002@gmail.com
- Tuesdays Tap & Ballet Classes, JoAnn Latus School of Dance, 4-8pm, Eaton Bray VH, 07800 518654
- Tuesdays Coffee Morning, Bring & Buy, Table Top Sale, 10-11:30am, Salvation Army Hall, Booth Place, Eaton Bray
- Fortnightly Jazzercise 9:15-10am, Eaton Bray VH, Annis, annisjazzercise@gmail.com 07447 409666
- Tuesdays Eaton Bray Tennis Club - 6-7.30pm Social play for all adults
- Tuesdays Berkhamsted Taekwon-do Kids, 5.45pm-6.30pm, Dagnall Village Hall, 07813 755785
- Tuesdays Berkhamsted Taekwon-do Adults, 6.30pm, Dagnall Village Hall, 07813 755785
- Tuesdays Movement is Medicine Pilates, 1:30-2:30pm, Billington Hall, moira@stjudesclinic.com
- Wednesdays Pilates, 8pm, Northall Village Hall, Lisa: 07832 230774
- Wednesdays Northall & District Age Concern Wednesday Club, 10am - 3pm, Northall Village Hall, Contact Dee on 07854 230243
- Wednesdays Art Course online 9.30 -11.30 am, contact Loma Moore 07896 619660
- Wednesdays Art Course, Bellows Mill Eaton Bray, 2-4.30pm, contact Loma Moore 07896 619660
- Wednesdays Jazzercise 7:30-8:30pm, Eaton Bray VH, Annis, annisjazzercise@gmail.com 07447 409666
- Wednesdays Pilates 6-7pm, Eaton Bray Village Hall, Heather Holmes, 07305 023077 pilateswithheather@mail.com
- Wednesdays Movement is Medicine Pilates, 7-8pm, & 8:05-9:05pm, Billington Hall, moira@stjudesclinic.com
- Wednesdays Stay & Play toddler group, 'Musical Monkeys' at the Eaton Bray Village Hall, 10am, £4.50 for one adult and child, £1 for extra children/adults, 0-6 months free
- Wednesdays Edlesborough Knit, Knatter & Crafting group, 11.30 - 1.30, Edlesborough Pavilion. Contact: e-mail pavilionknitters2023@gmail.com
- Thursdays KFFPA Street dance classes, Edlesborough Memorial Hall 4.15pm-6.30pm (4 years+)
Contact Kiri 07988161043 or visit Facebook page 'KF PerformingArts/ KFFPA' for info
- Thursdays Berkhamsted Taekwon-do Adults 6.30pm, Dagnall Village Hall, 07813 755785
- Thursdays Beavers (6 to 8 years old), 6.15-7.30pm, 1st Eaton Bray & Edlesborough Scout Hut, High Street, Edlesborough. Contact: ebebeaverleader@ebescouts.co.uk
- Thursdays Eaton Bray Methodist Church Social Afternoons, 2 - 4pm, All Welcome
- Thursdays Explorers Scouts (14-18 years old), 8pm-9.30pm, 1st Eaton Bray & Edlesborough Scout Hut, High Street, Edlesborough. Contact Simon Betts, simon_betts@hotmail.com

Village Diary

Thursdays	Retro Line Dance Class. 11.15am to 12.45pm. Eaton Bray Village Hall. Beginners welcome. www.jukeboxjunction.co.uk info@jukeboxjunction.co.uk 07864212171
Fridays	Tap & Ballet Classes, JoAnn Latus School of Dance, 4-8pm, Eaton Bray VH, 07800 518654
Fridays	Jazzercise 9:15-10am, Eaton Bray VH, Annis, annisjazzercise@gmail.com 07447 409666
Fridays	Scouts, (10½ to 14 years old), 7.00-8.30pm, 1st Eaton Bray & Edlesborough Scout Hut, High Street, Edlesborough. Contact Mark Owen, ebescoutleader@ebescouts.co.uk, 07899 892344
Fridays	“Little Luvvies” baby ballet classes, 10am-11.30am, Northall Village Hall. Contact Emma Whittemore on 01525 376124
Fridays	Movement is Medicine Pilates, 10-11am, Great Gaddesdon Parish Hall, moira@stjudesclinic.com
Saturdays	Jazzercise 9-10am, Eaton Bray VH, Annis, annisjazzercise@gmail.com 07447 409666
Saturdays	KFPA Musical theatre classes, Edlesborough Memorial Hall 9.30-10.30am (4years+) Contact Kiri 07988161043 or visit Facebook page ‘KF PerformingArts/ KFPA’ for info
Sundays	Sunday Worship at 11am, Edlesborough Baptist Church, Moor End, LU6 2FL. Contact: 01525 222064 or edlesboroughbaptistchurch@gmail.com
Sundays	Karate for kids & adults, 2:30-4pm & 4:30-6pm, Eaton Bray VH, Contact 07500 007779
Sundays	Eaton Bray Tennis Club - 10am -12pm Social play for all adults
Monthly	
1st Monday	Eaton Bray Parish Council Meeting, 7.30pm, The Coffee Tavern (except Jan-2nd Monday)
1st Monday	Eaton Bray W.I. Meeting, 7.30pm. Eaton Bray Methodist Church Hall. Contact Margaret Jones on 01525 220991
1st & 3rd Tues	Dunstable & District Orbit (social and charitable) Club meet at Dunstable Rugby Club at 8pm. For details contact 01525 222441 or 01582 755147
1st Saturday	St. Mary’s Church, Eaton Bray Coffee Morning, 10:30am - 12 noon (July held on 2nd Saturday)
1st Saturday	Book Swap at St Mary’s Eaton Bray, 10:30am -12 noon (July held on 2nd Saturday)
2nd Monday	Film Society, Sep to June, 2pm, Eaton Bray Village Hall, Graham Chappell 07980 321977
2nd Tuesday	Dunstable & District Local History Society meeting, 7.45pm, Methodist Church Hall, Dunstable
2nd Tuesday	Edlesborough W.I. Meeting, 7.30 pm, Edlesborough Memorial Hall. Contact Jackie Flint 01525 221618
3rd Thursday	Edlesborough Parish Council Meeting, 7.30pm, Edlesborough Pavilion or as stated in Edlesborough Parish Council News
2nd Friday	Leukaemia Research Coffee Morning 2, Dunstable Road, Dagnall 10.30 a.m. all welcome. No meeting in September, June plant bring and buy, December Sherry & mince pies
3rd Sunday	Lunch club 11.30 to 2.00pm, Eaton Bray Village Hall, Chris Hewitt 222288
Last Saturday	Coffee Morning, 10:00-12 noon, Edlesborough Methodist Church
This Month’s One Off/Annual/Irregular Events	
9th	Eaton Bray Methodist Church Cafe Community, 11am-1pm
21st	Edlesborough W.I. Coffee Morning, 10:30-12 noon, £3 for hot drink and cake
23rd	Repair Cafe, 9:30-12:30, Ivinghoe Hub
29th	St.Mary’s Messy Church, 10:30-12:30, Eaton Bray Village Hall

The paper used for this magazine is sourced from sustainable forests and can be recycled



Focus is online at www.thefocusmagazine.co.uk

Village Info



EDaN Community Transport
Peter Williams: 01442 842506

Police Contact Details

making neighbourhoods safer together

General Assistance (Recommended Number): 101 Emergency: 999

Bedfordshire Police (Eaton Bray)

T/Sgt 6268 Amy Ison, Leighton Buzzard Community Policing Team, Duncombe Drive, Leighton Buzzard, Telephone: 01582 473408

Thames Valley Police (Edlesborough, Dagnall & Northall)

PCSOs Tina Hobson & Megan Dean

Charlotte Cottage, 73 Leighton Road, Wing LU7 0RD

Email: greatbrickhillwingivinghoenhpt@thamesvalley.police.uk

To report non urgent crime: www.thamesvalley.police.uk

Village Hall Booking Contacts

Northall: Lorna Cubbage Tel: 07857 318696 www.edlesborough-pc.gov.uk/nvh

Email: northallvhbookings@gmail.com

Eaton Bray: Norman Lee 07975 797202 & Jane Taylor 07852 586045

Email: bookings@ebvh.co.uk Website www.ebvh.co.uk

Coffee Tavern: 07836 240467

Dagnall: Bev Way 07875 462128 & Trish Owen 07762 151364

Email: DVH_Bookings@outlook.com

Edlesborough Memorial Hall: Penny Pataky, Tel: 01525 229358

Email: manager@edlesborough-pc.gov.uk

Edlesborough Pavilion: booking@edthepav.org

Parish Council Contacts

Eaton Bray Parish Council: 07931 479663

Email: clerk@ebpc.co.uk Website: www.ebpc.co.uk

Edlesborough Parish Council (including Dagnall & Northall): 01525 229358

Email: clerk@edlesborough-pc.gov.uk Website: www.edlesborough-pc.gov.uk



Helpline: 07930 987064

Manned phone hours: 9am to 5pm, Monday to Friday
(An answering service is available for out-of-hours calls)

Call us if you want help getting to the surgery/hospital, collecting prescriptions, minor errands or d-i-y jobs, form-filling, walking your pet, on-line shopping support etc. or if you would welcome our befriending service.

We help people of Eaton Bray, Edlesborough, Northall and Totternhoe

Defibrillators In Edlesborough, Dagnall and Northall

In Edlesborough Parish there are FIVE defibrillators available 24/7. These devices were provided by parishioner fund raising, carnival donations, parish council monies and a donation from Bellway homes.

Since the installation of each device Edlesborough Parish Council has continued to invest in the ongoing maintenance, device checks, and the renewal of pads and batteries for each device. St Mary's Carnival Committee also makes an annual donation towards the upkeep of these vital pieces of equipment.

Each device is housed in a yellow, locked, heated cabinet at the following locations.

- **The Baptist Church**, Moor End, Edlesborough.
- **Edlesborough Memorial Hall**.
- **Munns Farm Shop**, Main Road South, Dagnall.
- **The Red Lion Public House**, Main Road North, Dagnall
- **The Swan Public House**, Leighton Road, Northall.



The Council thanks each building for generously allowing the cabinets to be attached to their buildings.

All five devices are registered with **THE CIRCUIT**. This is the national database for defibrillators.

How does THE CIRCUIT work?

THE CIRCUIT brings each of the 14 ambulance service defibrillator databases together into one database. It ensures the location is synchronised with the emergency services and is up to date, ready to save lives.

Should a device ever be required please call 999 to obtain information about the closest device and the lock combination to access the cabinet.

The ambulance service operators are trained to determine the type and severity of the emergency and will then deploy help as necessary.

After a device has been deployed THE CIRCUIT informs the Parish Council, who act as guardians for each device. The Parish Council then at their earliest opportunity visits the device, checks that it has been returned, whether any equipment needs replacing and then confirms to THE CIRCUIT whether the device is available or not for future emergencies.



Co-funded by



In partnership with



Eaton Bray with Edlesborough Parish News

Vicar: Rev'd Joy Cousins

The Vicarage, 11 High Street, Eaton Bray - Tel: 01525 220261

Associate Priest: Rev'd Stephen Burge

Church Warden & Pastoral Matters: Catherine Hayden (01525 220527)

Reader: Gordon Gray (01525 220136)

Website: www.stmaryseatonbray.org.uk Facebook: St Mary's Eaton Bray

Lent lasts until the end of March, with Easter Day falling on Sunday 31st March. Please see the centre of Focus for services during Holy Week and Easter. During Lent, the church encourages Christians consciously to review their relationship with God and to commit more time to prayer and reflection. In doing this, we are mirroring the behaviour of Jesus. During his ministry, Jesus often took himself off to a lonely place to pray. He withdrew- or retreated- from his everyday demands and responsibilities. The whole period of Lent is inspired by Jesus's retreat into the desert at the very start of his public ministry. In this time, the gospel writers tell us, Jesus wrestled with his calling and all its implications for his life. On another occasion, the Transfiguration, Jesus took his closest disciples Peter, James and John up a high mountain which St Mark emphasises happens 'apart, by themselves' to experience an intense encounter of his glory.

If we want to encounter God more fully, it can help to follow the pattern which Jesus showed. One of the places where I have had my most profound encounters with God is when I have been on Retreat. I was introduced to the idea of going on retreat when I was in Ministerial training. So what does a Retreat entail? In her book 'Finding the right Retreat for you' Gillean Russell describes it like this. 'A Retreat is a time consciously set aside for God. It is a period of time, usually a day or a weekend, sometimes longer... for exploration, a time when you can discover and practise different ways of listening to God and responding to him, time to become more aware of the way God is to be found in creation and in your life experience. When you make a Retreat you are free from all domestic or work responsibilities, and you are in a quiet place so that all the channels of communication are open and ready'

Prayer is about a relationship with God, and like most relationships it operates on different levels. Setting aside time to devote to that relationship helps to deepen and sustain it. Taking a Retreat each year is something which clergy are encouraged to do. But retreats are not just for clergy; they are for anyone wishing to make space for reflection and for the processing of the events of their life. Another important aspect of Retreats is the hospitality offered by the Retreat House. Most provide good food and comfortable surroundings. As Gillean Russell says, 'Everything on Retreat is geared to make you feel special.' Because we flourish when we know ourselves to be loved.

Over the past 30 plus years of ministry, I have been on many different types of Retreat. These include an art retreat, a poetry retreat and other Retreats led by various people lay and ordained. I have participated in silent Retreats, Ignatian Retreats and Individually Guided Retreats. Some have lasted a day, some a week and others 3 or 4 days. There is a huge variety of Retreats on offer with pretty much something to suit everyone. The Retreat Association produces information about what's available, which you can access

on line. www.retreats.org.uk I would recommend trying a day Retreat to see if it is something which you think would help you in your relationship with God.

With every blessing for Lent, Holy Week and Easter, Joy

☺ Joy



SERVICES AT ST. MARY'S CHURCH, EATON BRAY

SUNDAYS: 10am PARISH HOLY COMMUNION

(apart from the third Sunday - see below)

*On the First and Third Sundays of each month there is
HOLY COMMUNION at 8am*

*On the Third Sunday of each month there is a
WORSHIP SERVICE FOR EVERYONE at 10am, a shorter less formal service*

WEEKDAYS: Wednesday at 10am HOLY COMMUNION

EVERYONE IS WELCOME AT THESE SERVICES

Details and ONLINE WORSHIP: www.stmaryseatonbray.org.uk

Dagnall Church Services



Sun. 17th March 10.30am

Holy Communion

Sat. 23rd March 10am-12 noon

Easter Coffee Morning

Fri. 29th March 3.00pm

Good Friday Service

Easter Day

Sun. 31st March 10.30 am

Holy Communion

For any queries, please contact:

Philip Lee on 07977234453 or Dorothy Green on 01442 843237



**GOOD FRIDAY,
MARCH 29TH**

10.30am - 12.30pm

**Come for some St Mary's Easter Holiday Fun
in the Village Hall, Eaton Bray**

**All primary school age children and toddlers
with parents, grandparents or carers are welcome**

Activities, Singing & Bible Stories!

The theme will be 'The Easter Story'

There will be fish fingers to eat for lunch!

Friend of Bucks



Age Concern
NORTHALL & DISTRICT
WEDNESDAY CLUB



Charity No. 293080

We are looking for volunteer drivers and conductors to help with transporting the members to and from their homes on our minibus. This would be on a rota system, depending on the number of volunteers.



**Call 07854 230243
if you can help.**

Friend of Bucks



Age Concern
NORTHALL & DISTRICT
WEDNESDAY CLUB



Charity No. 293080

Would you like to help in the community by joining our friendly volunteers. If you have a passion for lending a hand we have opportunities in the kitchen working as part of a team. This would be on a rota basis of every 4/5 weeks.



**Call 07854230243
if you can help.**





UNICORN

WINDOWS LTD

UNIT 3 YOUNGS INDUSTRIAL ESTATE
STANBRIDGE ROAD, LEIGHTON BUZZARD
BEDS LU7 4QB



YOUR LOCAL HOME IMPROVERS

- ✓ DOORS; COMPOSITE, ALI AND UPVC
- ✓ CONSERVATORIES
- ✓ ORANGARIES AND GLAZED EXTENSIONS
- ✓ CAT FLAPS/DOG FLAPS
- ✓ BI-FOLD DOORS
- ✓ PORCHES
- ✓ CLADDING
- ✓ REPAIRS - INCLUDING REPLACEMENT GLASS

- ✓ WINDOWS; UPVC AND ALUMINIUM
- ✓ SOLID ROOF / ROOF CONVERSIONS
- ✓ CONSERVATORY REFURBISHMENTS
- ✓ SOFFITS, FASCIAS AND GUTTERING
- ✓ LANTERN ROOFS AND SKYPODS
- ✓ FLUSH SASH WINDOWS
- ✓ SLIDING DOORS
- ✓ AND MORE..





10 YEAR WARRANTY







CONTACT US

FOR MORE INFO OR TO ARRANGE YOUR FREE, NO OBLIGATION QUOTE

01525 854272

sales@unicornwindows.co.uk








Moren Associates
Technology Services

Technology Support for Home and Business

Onsite or Remote Support

PCs, Smartphones, Tablets, Printers

Broadband, Internet, WiFi, Email

Security Guidance

Virus Protection & Removal

Upgrades & Installations

Data and System Recovery

Hardware & Software Troubleshooting

Home & Office Network Setup & Support









01525 229695 or 07950 597962

support@morenassociates.co.uk

Free initial consultation



Edlesborough Parish Council News

Including Edlesborough, Dagnall and Northall

Village Planters

The EDaN Beautification Team NEEDS more volunteers to help with the upkeep of the various planters in the Parish. Can you spare some time? If so, please contact Christine Yates, chris@brooklyns.org.uk or Lorna Cubbage, Lornamcubbage@hotmail.com to find out more.



NMJ Planning Applications

At the time of writing this report Council is aware that decisions on the two applications have been delayed as follows

- 23/02966/APP Change of use to retail convenience store including associated external alterations, plant equipment, parking, and servicing area, 2 Peblemoor Edlesborough Buckinghamshire LU6 2HZ – new agreed expiry date 29th February 2024
- 23/02884/APP Erection of a commercial building for MOT and Car Service Centre, under Class B2 use N M J Motorhouse Tring Road Edlesborough Buckinghamshire LU6 2EQ – new agreed expiry date 29th February 2024.

Council is monitoring the applications for any further updates.

Should the Case Officer be minded to approve application 23/02966/APP it is highly likely that it will go to the Development Control Committee for determination, given the unprecedented number of objections to the application. Council noted that Greg Smith MP has objected to the application.

Traffic Calming in the Parish

The new Traffic Calming page is now available on the Council website. Here parishioners can find information about the steps the Council is taking to help with traffic calming. The latest data collected by the Moveable Vehicle Activated Speed (MVAS) devices is also available on the website www.edlesborough-pc.gov.uk/community-information/traffic-calming-in-the-parish/

EdleFest 2024

The EdleFest 2024 will take place on 7th and 8th June. More information and tickets are available via the EdleFest website <https://edlefest.site123.me/>



EPC Precept Increase for 2024/25

At the January Council meeting councillors agreed the budget for 2024/25. To keep pace with the current rate of inflation, the Council agreed to submit a precept request of £185,012 to Buckinghamshire Council. The “precept” is the amount of money Buckinghamshire Council gives to Edlesborough Parish Council from their Council Tax income. This means that the Parish Council’s element of the Band D rate will increase from £10.39 per month to £11.70.

More information about the Council’s finances can be viewed at www.edlesborough-pc.gov.uk/parish-council/annual-returns-to-audit-commission/

Parking at Edlesborough Memorial Hall

The Council reminds people that the driveway at the front of Edlesborough Memorial

Hall is for hall hirer parking only. Please do not park here unless you have hired the hall as this causes an inconvenience to hall hirers.

[Salt Bins, Fly Tipping and Issues with Roads and Pavements](#)

Please report fly tipping, potholes and other issue with roads and pavements to Buckinghamshire Highways. If you consider the issue to be dangerous or an emergency, please call Buckinghamshire Highways on 0300 131 6000. Otherwise, please submit the report online at www.fixmystreet.buckinghamshire.gov.uk and Buckinghamshire Highways will deal with it in line with their agreed timescales.



[Buckinghamshire Council's LitterLotto Scheme](#)

Have you signed up to the Buckinghamshire Council "LitterLotto" scheme? Residents can upload a photo of themselves picking up and correctly disposing of litter. They will then be entered into a prize draw with the chance of winning £250. More information can be found at: <https://www.buckinghamshire.gov.uk/news/litterlotto-local-launched-to-reward-buckinghamshire-residents-for-binning-litter/>



[Churchyard Steps](#)

EPC is pleased to announce the completion of the new steps in the Churchyard at the Church on the Hill. These replace the old not fit for purpose steps.



[Council Meetings](#)

The next Edlesborough Parish Council Meetings will take place on:

- [Thursday 21st March 2024 – in Edlesborough Pavilion](#)
- [Thursday 18th April 2024 – in Edlesborough Pavilion](#)

The meetings will commence at 7:30pm.

Parishioners are welcome to attend all Ordinary Parish Council meetings and may ask questions, raise issues, and give suggestions during the Open Forum before the formal start of the meeting. Council requests that where possible questions, issues and suggestions are submitted in writing to the Clerk by the Tuesday preceding the meeting.

The agenda and full minutes of previous Parish Council meetings are available to view on the website or from the Parish Clerk.



Clerk: Miss Penny Pataky Office hours Mon – Fri 10am – 2pm (Excl. Wed)

Email: clerk@edlesborough-pc.gov.uk 01525 229358 Website: www.edlesborough-pc.gov.uk

Facebook: www.facebook.com/EDANParishCouncil

Problem Solving:

Virus & Spyware Removal
Internet & Email Assistance
Fault Diagnostics
Repairs & Upgrades
Slow Running PC's

Services:

PC & Mac Support
Wired & Wireless Networks
Data Recovery
Install & Set-up
Health Checks

On-site Visits:

Office Hours &
Evenings - by appointment

Sales:

Desktops, Laptops & Tablets
Printers & Peripherals
Software

For friendly advice call John Wallace

07968 536068 or 01525 261381

Email: john@computamation.co.uk

Web: www.computamation.co.uk

9a Lower Way, Great Brickhill, Buckinghamshire. MK17 9AG

**Computamation
Services Ltd
Established. 1999**

"Excellent
experience.
I nearly fell
asleep whilst
having my fillings
done!
Very reassuring
- no rush.
I was made to
feel completely
at ease.
Thank you!"
- R.R.



"Without doubt
the most
competent,
gentle & lovely
dentist in the
Northern
hemisphere! I
won't see
anyone else.
Thank you from
a nervous
patient."
- M.B.



Floss and Smile Dental Practice
Edlesborough/Eaton Bray

Telephone: 01525 223175
Tring Road/Harling Road Roundabout
Eaton Bray, LU6 2LA

www.flossandsmile.co.uk

General Family Dentistry * Implants * Crowns * Bridges * Dentures * Hygienist *
Smile Makeovers * Tooth Whitening * Straight Teeth *
0% Finance

Dr Alpa Johar (GDC 111350) & Associates



MJ Broughton

- ✓ High Quality Painting & Decorating
- ✓ Fully Insured
- ✓ Local and trusted for over 30 years

Over
30
Years Experience

Telephone or email
for a free estimate.

☎ 01525 222 764
☎ 07768 766 859
✉ maxbro@btinternet.com



Anne Johnson Osteopath 6 Moor End, Eaton Bray

Back, neck and joint pain

Postural tension and headaches

Arthritic and other muscle and joint problems

07957 250682

Book by phone or online

www.anne-johnson.net

DEEP CLEAN

Simply the BEST Carpet & Upholstery cleaning you can get!

OUR SERVICES INCLUDE :

- Pre-treatment
- Hot water extraction
- Stain removal
- Pet odour elimination
- Residential, Commercial and Industrial carpet & upholstery cleaning



COVERING HERTS, BEDS & BUCKS



**Now offering
Gutter
Vacuuming,
Fascia & Soffit
cleaning!**

Contact Darren for a FREE Quotation

☎ 01525 851 811 www.deep-cleaners.co.uk
☎ 07790 034818 ✉ sales@deep-cleaners.co.uk

N.D.S.

General Building and Plumbing

Kitchens and Bathrooms:-

Design + Supply or just Installation

All aspects of building work and property maintenance undertaken

Can also replace steamed up/misty

Double Glazing

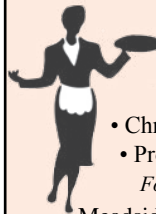
Please call Neil Scott:-

07946 626 564 / 01525 221470

For Free Estimate. All work considered

No job too small

(30+ Years Experience)



Patricia's Cuisine

Catering For All Occasions

- Buffets, Dinners •
- Christenings, Weddings, Funerals •
- Promotions & Business Lunches •

For Enquiries & Menu

Meadside Farm, 104 High Street,
Eaton Bray, Bedfordshire, LU6 2DP

Telephone: 01525 222174
www.patriciascuisine.co.uk



David John Harris

Green Fingers



(Established 1992)

All Fencing Work • All Gates • Paving • Patios
Driveways • Shingle • Hedge Setting and Cutting
Grass Cutting • Turfing Specialist • Exterior
Painting Service • Sheds Small Building Work
Trees & Shrubs Supplied

Tel/Fax: 01525 221745
Mobile: 07889 143713

EATON BRAY PARISH COUNCIL

Eaton Bray Parish Council Focus Report December 2023-January 2024

A full copy of the minutes for Eaton Bray Parish Council can be found on our website: www.ebpc.co.uk. A hard copy of the minutes can also be viewed on the Parish Council's notice board at The Coffee Tavern.

Parish Council Website

To keep up to date with what is happening in your parish, you can get all Parish Council news and updates from the Parish Council website. The website has all Parish Council meeting agendas, minutes, financial documents and contact information as well as official sponsored events/initiatives and is the official council communications website. Visit it here: www.ebpc.co.uk

Eaton Bray Parish Council Accounts

A copy of the Parish Council's Finance & Annual Reports can be viewed on the Parish Council Website.

Eaton Bray Facebook Page

Follow Eaton Bray Parish Council on Facebook, keep up to date with what is going on in the parish. <https://www.facebook.com/EatonBray>

Flooding Information

For who to contact if you experience flooding in the parish, a list of flood support contacts is available on the Parish Council website. Visit it here: <https://www.ebpc.co.uk/flooding-information/>

FixMyStreet

CBC have a reporting system to make reporting easier, quicker and more accurate. To report and track highways and environment problems go online/use the FixMyStreet app: <https://fixmystreet.centralbedfordshire.gov.uk/>

Eaton Bray Parish Council Meeting

Held on Monday 8th January 2024, from 7:30pm

(Minutes ratified at the Parish Council Meeting on Monday 5th February 2024)

Central Bedfordshire Council (CBC)

Your Ward Councillor: Cllr Philip Spicer

Email: Philip.Spicer@centralbedfordshire.gov.uk

CBC Website: www.centralbedfordshire.gov.uk

CBC Email: customers@centralbedfordshire.gov.uk

CBC Customer Services: 0300 300 8301

- Highways: poor quality repairs, Cllr Spicer speaking with CBC Highways on quality of work.
- Flooding: Cllr Spicer reported the flooding with the CBC emergency WhatsApp group and local Facebook page. CBC Highways/Anglian Water visited the location (Market Square).
- Postal Service: Andrew Selous MP is carrying out an investigate into the Royal Mail and postal deliveries in the area, as he has been made aware that not everyone is received post on time. If residents are not getting a regular postal service, Andrew Selous MP has asked for residents to write to him with their experience.

*Parliamentary office: House of Commons, London, SW1A 0AA

*Constituency office: Wentworth House, 83 High Street North, Dunstable, LU6 1JJ

*Email: andrew.selous.mp@parliament.uk - Website: <https://www.andrewselous.org.uk/>

Bedfordshire Police

- For general Police contact/enquiries: non-emergency call **101**
- For emergencies: call **999**

Planning Applications & Appeals – January 2024

A copy of the Parish Council's response to planning applications can be seen on the Parish Council website or obtained by applying to the Parish Clerk.

Recreation Ground

- Seating: The Rye – order placed. Awaiting confirmation of delivery.
- Noticeboard: The Rye – order placed. Awaiting confirmation of delivery.
- Small play area gate: School Lane – new closure on order. Waiting delivery.
- Holmans Field entrance: ground is soddened and in poor condition, the Parish Council is looking at suitable options to help improve this area.

Mill End Close/Waterside

The IDB [Internal Drainage Board] are proposing to start work to the river, waiting confirmation of start date.

*UPDATE (05/02/2024): Works to start February 2024.

Monthly Payments, January 2024

A copy of the Parish Council monthly payments can be seen on the Parish Council website or obtained by applying to the Parish Clerk.

Parish Council Meeting

1st Floor, The Coffee Tavern, Eaton Bray

Details can be obtained from the EBPC website, www.ebpc.co.uk

- Parish Council Meeting, Monday 4th March 2024, from 7:30pm
- Parish Council Meeting, Monday 8th April 2024, from 7:30pm

Parish Council Open Office

Ground floor 10am-12noon at The Coffee Tavern, High Street, Eaton Bray

Dates/times subject to change, please check the EBPC Website for updates

- Tuesday 12th March 2024
- Tuesday 16th April 2024



Heidi Head, Parish Clerk

Email: clerk@ebpc.co.uk – Telephone/Text: 07931 479663 – Website: www.ebpc.co.uk

Parish Office: The Coffee Tavern, 18 High Street, Eaton Bray, Beds, LU6 2DP

Postal Address: 14 Pavilion Gardens, Aston Clinton, Bucks, HP22 5FG

Follow Eaton Bray on Facebook - Keep up to date with what is going on in your parish



Dominic Woolcott

Painter & Decorator



- Internal & External
- Plastering & Coving
- Insurance Work
- 30 Years Experience
- Competitive Rates

**For a professional job call:
01525 229682 or 07747 042879**



NEIL HODSON ASSOCIATES

STRUCTURAL ENGINEERING | ARCHITECTURAL SERVICES

Comprehensive design service for Building and Construction

- Architectural & Structural Designs
- Extensions • Alterations • Loft Conversions • Defects and Repairs
- Planning Permission • Building Regulation Consents • Listed Building Consents

Village Based | Established 35 years

01525 222462 | 07845 950594

P. DYER ELECTRICAL

For all your Electrical & Testing & Inspection needs

- All Testing & Inspection
- CCTV Systems
- Electric Vehicle Charging
- Rewires
- Security Systems/Lighting
- Fuse Boards
- LED & Low Energy Lighting
- Fault Finding/Repairs

Fully insured, Part P registered, all work guaranteed.
Fast, friendly and reliable local electrician. For a free,
no-obligation estimate, call Paul on:

Tel: 01525 222109

Mobile: 07850 682815

www.pdyerelectrical.co.uk



Lee Hutt 25 YEARS
Heating & Plumbing Services

Bathrooms
DESIGN & INSTALLATION

TILING

HEATING

TAPS

Leaks

CALL OUTS

Free Estimates

01525 222145 07971 559185

The logo for Lee Hutt Heating & Plumbing Services is a blue square with white text and icons. It features a water tap icon, a 25-year anniversary laurel wreath, and various plumbing-related icons like a sink, toilet, and wrench. The text lists services such as Bathrooms, Tiling, Heating, Taps, Leaks, and Call Outs, along with 'Free Estimates' and two phone numbers.

CHIROPODY HOME VISITING PRACTICE **Julia Reading, BSc(Hons)**

17 years experience

- * Corns * Hard skin * Verrucae
- * Thickened/Ingrowing nails
- * Nail cutting * Diabetic feet

Please telephone:

0774 647 2781

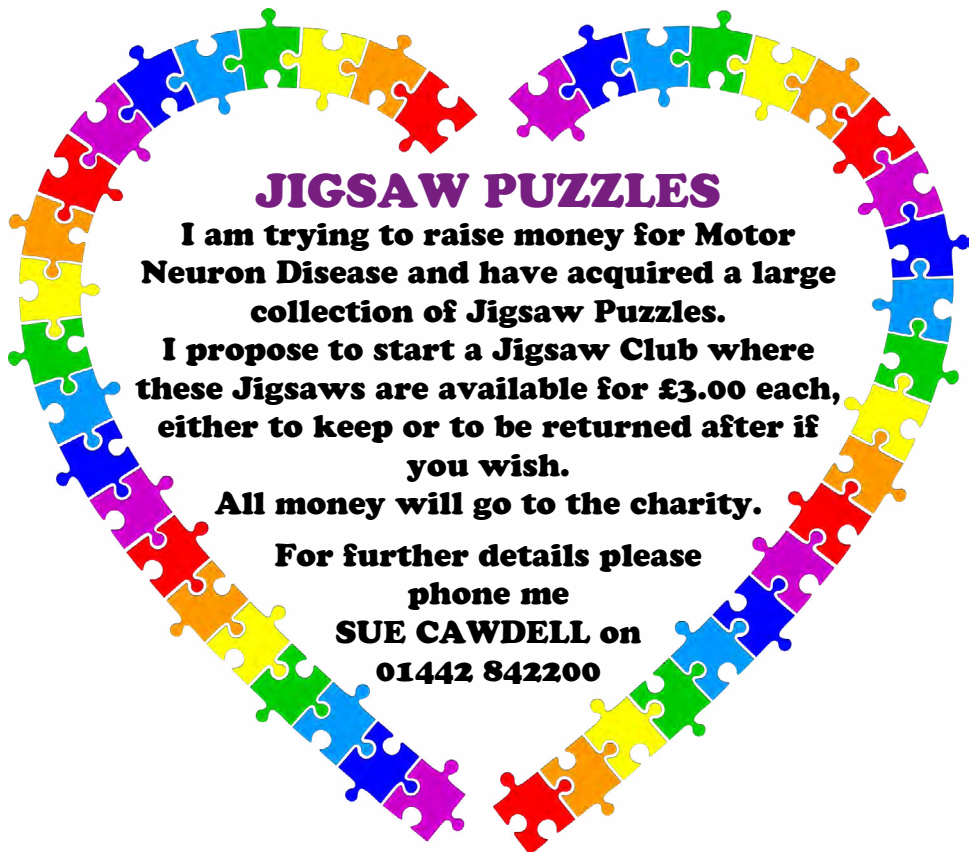
for more information

or to make an appointment



The COLLEGE
of PODIATRY





JIGSAW PUZZLES

I am trying to raise money for Motor Neuron Disease and have acquired a large collection of Jigsaw Puzzles.

I propose to start a Jigsaw Club where these Jigsaws are available for £3.00 each, either to keep or to be returned after if you wish.

All money will go to the charity.

For further details please phone me

**SUE CAWDELL on
01442 842200**



GORDON'S CHRISTMAS PUZZLE 2023



Thank you to everyone who has entered this year's Puzzle and for your remarkable generosity. 2023 has been a successful year: 320 entries (slightly down on recent years) of which 104 scored full marks (120) and a substantial sum of money raised (£8,000) meaning that each of the charities – Cairngorm Mountain Rescue Team, Cardiac Risk in the Young, Crisis, Our Time and St Mary's Church – will each receive £1,600.

A draw was held to select the winners. The three people who scored full marks and will receive £50 were: Beryl Whittaker, Chris Deal and Christine Pairman. Five additional names, were selected from those who submitted an entry; each of these will receive £10. These were: Chris Green (117), Jayne Morrison (119.5), Sue Dyson (120), Vicki Phillips (120) and Valerie Wiltshire (118.5). I have awarded one other special prize of £10 to Lucy Leese, aged just 10 years old who, last year attempted the puzzle and scored an impressive 23 marks

This brings the total raised by the 33 Puzzles since 1991 to £135,600. The donations have been made to 96 different charities of which 66 have received donations of £1,000 or more. On behalf of all the charities supported "Thank you for your generosity".

Eaton Bray Methodist Church

Invites you to

Café Community

Saturday 9th March 2024
11.00am - 1.00pm

Donations shared with our Charity of the Month

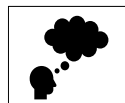
Relax & chat with friends, coffee, light lunch

All ages welcome (inc. activity area)

*Food For The Body...
Food For Thought...*



Charity Quiz Night



EATON BRAY VILLAGE HALL 

Raffle

20th April 7pm for 7.30pm start

£10 per person includes Ploughman's

Once again in aid of local charities:
Apple Down Kennels & Dunstable Food Bank

Contact; Mintyman1958@gmail.com



Steve the Mower Man

Steve Johns
**All mowers and garden machinery
 repaired and serviced**
Collection and delivery available
07720 828166

**Will Kimberley
 Garden Services**
01442 255784

Phone for a free no obligation written estimate
wkgardenservices@btconnect.com

- High hedges a speciality
- Fences erected and repaired
- General garden tidy up's
- In fact any job in the garden!

Edlesborough Flowers

Flowers For All Occasions
 Hand Tied Bouquets
 Flower Arrangements

Novelties & Gifts : Candles & Diffusers
 Tel: 01525 221920
www.edlesborough-flowers.co.uk
 Email: info@edlesborough-flowers.co.uk
 2 High Street Edlesborough LU6 2HS

S M Reilly & Son Ltd
General Builders & Contractors

 **Turning Your House into
 a Home Since 1987**

All aspects of the building trade undertaken

- *Extensions*Hard Landscaping*
- *Windows, Doors & Conservatories*
- *Fitting of Aluminium Bi-fold Doors*
- *Kitchen & Bathrooms*Drives*
- *Loft Conversions*

01525 221740 07970 637511


DM SECURITY

Commercial & Residential Alarm Systems

CCTV • Access control

Intruder Alarms • Locks

Electrical Installations

Fuse Boards • Re-wires

John Dorman: 07483 872017
 Chris Mahoney: 07801 552113
 20 Slicketts Lane, Edlesborough,
 Dunstable, Beds, LU6 2JD

**toni's
 tootsies** 

mobile foot health care


 Register For...
 For Health Practitioners

-  **Fungal Infections**
-  **Ingrowing Toenails**
-  **Callus/Hard Skin**
-  **Cracked Heels**
-  **Nail Reconstruction**
-  **Verrucas**
-  **Nail Trimming**
-  **Corns**

Toni Nash is a fully qualified Foot Health
 Practitioner based in Slapton, Bucks...
 and she's ready to take your Call!

07484 749393
tonistootsies@gmail.com
www.tonistootsies.co.uk



01525
851080

.CO.UK

07973
167779

SIGNS
VAN STICKERS
VEHICLE GRAPHICS
BOARDS & BANNERS
PRINTED STICKERS
BUSINESS CARDS
PRINTED & EMBROIDERED
CLOTHING

12 HARMILL IND EST LEIGHTON BUZZARD LU74FF

www.pinstripes1995.co.uk

Join us on Facebook – **PINSTripES 1995**

WASHING MACHINE REPAIRS

ALSO
DISHWASHERS, TUMBLE DRIERS,
AND ELECTRIC COOKERS



Call
ANDERSON D.R.S.

01582 665764

www.andersondrs.co.uk

SALES AND RENTALS AVAILABLE

Established over 20 Years

DUNCAN TOMBLIN **TREE SURGEON**

Forestry Contractor • Tree Felling
Crown Reduction & Thinnings
Deadwooding • Hedge Cutting
Stump Grinding • Site Clearance
Private Agriculture Fencing Contractor
Chipper & Stump Grinding Hire
Digger Hire

FULL PUBLIC LIABILITY INSURANCE
FREE ESTIMATES

'The Best Choice For Your Tree'

TEL: (01525) 221946

MOBILE: (07802) 410728

12 Greenways, Eaton Bray, Beds

A McClelland
Pest Control



FOR FAST RESPONSE CALL:

Mobile 0777 494 8415

Office 01582 872158



specialists in: wasps - bees - ants
hornets - fleas - cockroaches - bed
bugs - pigeons - magpies - rabbits
rats - mice - moles - squirrels
foxes - mink - feral cats



UNMARKED VEHICLES

For further information please call or email
amcclellandpestcontrol33@gmail.com

Next Charity Fundraising Quiz Night

Eaton Bray Village Hall 20th April 7 for 7.30pm start

Come along to another evening of Brain Teasers and Cunning questions, and do it all for a good cause.

As usual tables of 8 is good, but don't worry if you can't get a full table, we will match you up with other quizzers.



For just £10 a head you get entry and a Ploughman's and a chance for bragging rights if you come 1st to take home the "Keith Blackburn Memorial Shield" (well for 6 months) as well as bottles of wine.

Remember your favorite tipple + glass as well as any nibbles. Also a few pounds for our Raffle, with all proceeds going to Local Charities.

Please book early as we filled the hall to max last October 😊

Contact me, Robert Taylor, to book your places on Mintyman1958@gmail.com

OK can't leave you without a Quiz to get your synapses firing - An Easter based one with answers on page 35.

1. Who provides the voice for Peter Rabbit in the 2018 animated movie? 
2. In *Harry Potter and the Goblet of Fire*, Harry and Ron Weasley's dragon-sized Easter Eggs are filled with Molly Weasley's delicious homemade what inside?
3. In what Disney film does the inquisitive rabbit Thumper feature?
4. Which of Willy Wonka's badly behaved guests gets turned into a giant blueberry?
5. Babe is an orphaned pig who wants to be a what?
6. Which Oscar winning American actress plays beloved author Beatrix Potter in the 2006 biopic *Miss Potter*?
7. Name the 2001 cult movie about a troubled teen who befriends a bunny costume-clad figure named Frank that only he can see?
8. Which actor is playing a young Willy Wonka in the anticipated origin tale *Wonka*?
9. Which Australian A-lister voices the adorable Flopsy in 2018's star-studded *Peter Rabbit* movie? 
10. In 1948's lavish musical *Easter Parade*, who stars opposite Fred Astaire as ambitious chorus girl Hannah?

Dunstable Probus Club

Dunstable PROBUS Club meets on the second Monday of the month at Tilsforth Golf Centre and membership is open to retired or semi-retired professional and business people. The Club's main purpose is the promotion of good fellowship. Members enjoy some social activities and the occasional organised visit throughout the year and after their regular monthly lunch meetings are entertained by speakers who give talks on a wide range of topics. If you are interested in joining the Club, please contact the Secretary, Philip Savage on 01582 662462.

Appledown Rescue Dog of the Month



Handsome Tank is a lurcher aged 5/6 years. With his sweet-nature and nice lead manners, he has become a favourite with our walkers! He can be a little nervous due to his previous life, so will need owners with patience to help him gain confidence and adapt to living in a house. We think Tank could live with another dog, but not cats. He is such a gentle boy that he may suit a retired household with a secure garden. To offer a rescue dog a loving home, please download an application form from our website where you will find information on the rehoming process. Viewings are by appointment only.

To support our work please make a one-off donation of £3 by texting APPLE to 70111, or donate via Paypal using the 'DONATE Support a Cause' option. Cheques are also welcome.

Appledown Rescue & Rehoming Kennels Harling Road, Eaton Bray LU6 1QY

01525 220383 (10am-1pm & 2-4 pm) E-mail: appledown.kennels@btinternet.com

Website: www.appledownrescue.co.uk

Registered Charity Number 1116848



For Sale

4 grey kitchen/dining chairs

Few imperfections as shown in photos

Only used for a few months

£130 Phone 01525 220143



ASPECT

YOUR LOCAL ELECTRICIAN
OVER 20 YEARS EXPERIENCE

ELECTRICAL

CONSUMER UNIT UPGRADES (FUSE BOARDS)
LIGHTING - INTERIOR, EXTERIOR & SECURITY
HD CCTV
REWIRING
NEW INSTALLATIONS
TESTING & INSPECTION

ALL WORKS TO CURRENT WIRING & BUILDING REGULATIONS
PART P CERTIFICATED & FULLY INSURED

CALL STEVE ON
07976 283969
aspect@sparky.me




Ofsted
Good
Provider

"Pupils are unfailingly proud of their school"
Ofsted, 2019



Eaton Bray Academy is a happy, inclusive family where pupils and community are at our heart. Together we inspire children to be curious and develop a genuine love of learning to provide strong foundations for their future.

Eaton Bray Academy

01525 220468

admin@eba.ec

www.eatonbrayacademy.co.uk

We provide wrap around care each day from 7:30am and have availability in most classes for pupils from the term after they turn two to Year 6.

Contact us to arrange a tour of our lovely village primary school.



Stephen D. Janes

(Established in 1982)

**CARPENTRY, JOINERY
KITCHENS FITTED
PROPERTY MAINTENANCE
TELEPHONE: 01525 220649**



JAMES FALCON-CROSS

LANDSCAPING AND OUTDOOR LIVING DESIGN

**ALL ASPECTS OF LANDSCAPING
UNDERTAKEN INCLUDING
FENCING, TURFING AND PATIOS
TIMBER STRUCTURES
DESIGNED AND BUILT**

VEGETABLE AND HERB GARDENS

01442 843258 / 07769 901325

ONECROSSFALCON@GMAIL.COM

Misty Double Glazing?

Over 30
Years
experience.
FREE
Quotes

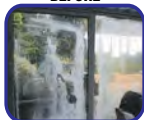
Over 30
Years
experience.
FREE
Quotes

**KEEP YOUR WINDOW FRAMES...
... WE JUST REPLACE THE GLASS!**

• UPVC • Aluminium • Or Wood

Because we replace just the glass the repair is a
Fraction of the cost of a complete replacement window.

BEFORE



AFTER



**mistydoublinglazing.co.uk
QUALITY GLAZING SERVICES**

01525 876808

WE ALSO REPLACE BROKEN...

• Glass • Handles • Hinges & Locks
AND REPAIR...Patio Doors & Conservatories!



BCA Chef of The Year



**Curry Life
Chef of the year**



**Spice Time Best Located
Restaurant in Est of England**



**Café
masala**
Exquisite Indian Cuisine

Fully Licensed & Air Conditioned

OPEN SEVEN DAYS A WEEK: 5:30 - 11:00

CLICK AND COLLECT 10% DISCOUNT OVER £22

Tel: 01525 222264

Address: 63 Bower Ln. Eaton Bray, Dunstable LU6 1RB

Website: www.cafemasala.com



**Regional in Finalist
Est of England**




Bring along:


- ♻️ Clothing and Fabrics
- ♻️ Household items
- ♻️ Furniture
- ♻️ Laptops, phones, tablets
- ♻️ Jewellery
- ♻️ Tools
- ♻️ Bikes


All sorts!!!


No charge for fixing, but donations are welcome



 @ivinghoepitstonerepaircafe

 ivinghoerepaircafe@gmail.com

 Ivinghoe & Pitstone Repair Café

 www.iprepaircafe.wixsite.com/

Our first meeting of 2024 took place on a bitterly cold January evening and the good turnout was much appreciated.

We opened with minutes of the December meeting/Christmas Lunch held at Tilsworth Golf Club. The occasion was unanimously deemed a great success and indeed the venue has already been booked for December 2024. New Committee Members were welcomed and farewell and thanks to outgoing members, Sue Bingham and long serving ladies, Maureen Shipway and Pauline Hellard.

We were delighted to welcome as our guest speaker the renowned wildlife photographer and naturalist Andy Sands. His subject, British Wildlife, an interest which started in childhood. Andy was most entertaining, enthusiastic and informative. His talk was illustrated with stunning photos, close up and macro of various birds in their native habitat, small mammals, insects, bugs, fungi and slime moulds. In turn Andy expanded on where and how the photos were taken, the natural habitats and the unintended consequences, good and bad, of farming practices and game bird management. A fascinating and thought provoking talk.

The evening concluded with refreshments, raffle and an opportunity for members to catch up with each other after the Christmas holidays.

Meetings are held on the second Tuesday of the month at the Memorial Hall at 7.30 pm. New Ladies are always welcome.

✍️Caroline Colleran



Edlesborough WI Coffee Morning

Come & Join Us!

Thursday 21st March 2024

Edlesborough Memorial Hall

10.30am till midday

£3 a head for hot drink and cake

Raffle & Bring-and-Buy

Contact: 07913163557



G & J Groundwork & Landscapes

Block Paving * Patios * Driveways
Clearance * Paths * Shingle * Slabs
Artificial Grass * Fencing
Free estimates

Garry
07949 118011

Jason Owen

Quality Painting & Decorating

Dagnall based decorator with over 35 years experience. Free quotes, friendly and tidy service.

0790 179 8419
jasonowen61@hotmail.com



Desktop Publishing

Presentations
Books, Leaflets Brochures
Magazines, Adverts
Design & Layout
Self Publishing

Digitising

Scanning of Photos & Documents, Slides & Videos
Archiving, Photo Repairs

Domain Name, Email Address & Web Site Hosting

01525 229695
enquiries@morenassociates.co.uk
www.morenassociates.co.uk

Absolutely Plastered

DOMESTIC/COMMERCIAL, CLEAN AND RELIABLE SERVICE,
FREE ESTIMATES, FRIENDLY ADVICE

* Plastering & Coving

* Floor Screeding

* Pebbledashing & Rendering

* Dry Lining

* Cornices & Mouldings

* Insurance Work Undertaken

CALL NICK CONWAY ON

Mobile: 07751 830716

17 Kirkstone Drive, Dunstable LU6 3PP



JoAnn Latus SCHOOL OF DANCE

Established dance school in Eaton Bray with more than 30 years of experience and success offering Ballet, Tap and Modern. Free trial sessions.

Contact Jo - 07800 518654
info@jolatusdance.co.uk - www.jolatusdance.co.uk

Spinney Landscapes & Gardening Services

All Aspects of Grounds Maintenance

Leaf Clearance • Grass Cutting/Scarifying
Patios & Driveways • Pressure Washing
Weed Control • Tree Work & Wood Chipping
Fencing • Snow Clearing • Mini Digger Hire
Tel: 01525 839622 Mob: 07876 500292
Email: spinneylandscapes@gmail.com
www.spinneylandscapes.com

NG AUTOS

MAKING YOU AND YOUR CAR HAPPY

CAM BELTS • MOT'S • MOT REPAIRS • HEAD GASKETS
AIR CONDITIONING • RECOVERY/BREAKDOWN
DIAGNOSTICS SERVICING • BRAKES • SUSPENSION
CLUTCHES • GEARBOXES • TYRES • WHEEL BALANCING
WHEEL ALIGNMENT COLLECTION & DELIVERY

CALL NICK OR GARY

01525 220850 OR 07972 198615

SPARROW HALL FARM, LEIGHTON ROAD,
EDLESBOROUGH LU6 2ES



SECURITY SYSTEMS LIMITED

Local family owned business with over 35 years experience offering the latest technologies for home and business security at competitive prices



- Commercial and residential intruder systems
- CCTV
- Security lighting, door entry, smart doorbells
- Monitoring and service



www.mjsecurity.co.uk

T: 01582 665022

E: info@mjsecurity.co.uk

Call us for a FREE survey



Plastered

A simple slip against a wall
An arm put out to break a fall
A sudden end to all my fun
So many, many things not done

The call not taken
The tap not turned
The bottle not shaken
The fingers burned

The picture not hung
The paper uncut
The friend not rung
The un-fed mutt

The face not washed
The hair not combed
The teeth not flossed
The body not toned

The shoes not tied
The text not made
The eggs not fried
The table unlaid

The fly not swatted
The poem not typed
The figures not totted
The bum not wiped

Oh! Pity me
For heaven's sake
Dear God, please
Give me a break!

✍ John Hockey



It's OK

It's OK to have a down day
To let your feelings out
Take off that painted smile
To cry, to scream, to shout

It's OK to leave the housework
To leave the dishes in the sink
The chores can wait for now my friend
If you just need time to think

It's OK to just be selfish
To do the things you want to do
Turn off that phone, shut the door
Put yourself at the front of the queue

It's OK to take a minute
To put yourself back in first place
Relax, unwind, refresh your mind
Before you get back in the race

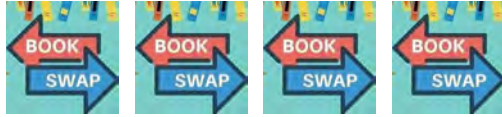
✍ Maxine Bailey ©

*Have you penned a verse with
local interest that we could publish
in Focus?*

*We would be happy to
accommodate any budding poets.*

Lost and Found

**A ladies metal bracelet was found on Friday 2nd February
outside my house on the pavement in Eaton Bray.
Please phone Suzan on 01525 222 165 if it might belong to you.**



Take a book you want to read - Leave a book you want to share

**The next Book Swap at St Mary's Church will take place
on Saturday March 2nd from 10.30 – 12.00 noon**



***It's our 2nd birthday.
Come and help us
celebrate!***

For more information about Book Swap please contact:
Chris Sanders Email: chris.sanders45@gmail.com
Jenifer MacKenzie Email: jenimackenzie@hotmail.com



Eaton Bray Good Neighbours is part of a network of similar groups operating under the umbrella of Bedfordshire Rural Charities. Our local group covers Eaton Bray, Edlesborough, Totternhoe and Northall. Our telephone number, 07930 987064, is with a volunteer

Monday to Friday 9am to 5pm with an answerphone available outside of these times. Volunteers support people who find it difficult to get out and about or to use public transport to do shopping, collect prescriptions or get to medical appointments. During the last quarter of 2023 we dealt with a total of 326 tasks. By far the most common requests for help are for medical appointments and prescription or shopping delivery. We also do some befriending and pet care. During this quarter there was only one client we could not help. Sometimes this is because the task is at too short notice and occasionally a medical appointment is just beyond our range but we will try to put the client in touch with another agency who might help.

We are always looking for volunteers so if you would like to help do get in touch with the phone number above. We are particularly looking for volunteer drivers who will take clients to medical appointments. This is very flexible always with the choice of opting into a job only if it is convenient to you. Basic mileage is also paid.

EBGN

St Mary's 100 Club

The lucky prize winners are:

February 2024

1st – prize – Joan Fossey

2nd prize – Teresa Ledger

3rd prize – Paul Marshall

Leighton Aerials

Established 1970

For all your aerial
and satellite needs
call Colin on
01525 374742



ARC Contract Services Ltd

- Painting & Decorating • Plastering
- Wall & Floor Tiling • Door Hanging
- Bathroom & Kitchen Installations

20 years experience

All work guaranteed and fully insured

Call Adrian: **01582 539179**

Mobile: **07789730580**

email: adriancalder107@live.co.uk

CHARLES HILL

GARDEN SERVICES LTD

DESIGN | BUILD | MAINTAIN

LANDSCAPE CONTRACTORS

NCH Horticulture City & Guilds Garden Design

A professional company working with all your garden requirements from design to complete landscape.

07773 723236

www.charleshillgardenservices.co.uk

www.alleyearroundbbq.co.uk



TODDINGTON

INDEPENDENT FINANCIAL ADVICE



Institute of
Professional
Willwriters
PROFESSIONAL • ETHICAL • COMPETENT

DO YOU NEED FINANCIAL ADVICE?

We can help you to review your current or proposed,

**Mortgages, Insurances, Pensions & Investments, Equity Release, Inheritance Tax,
Wills and Trusts, or a general review of your current position?**

'As a mortgage is secured against your home, it may be repossessed if you do not keep up the mortgage repayments. The financial conduct authority does not regulate tax and estate planning or will planning'

Unlike some TV adverts we don't charge a fee for equity release, so no broker fees added to your loan! 'Equity released from your home will be secured against it'

LOCAL OFFICE: Toddington

Contact: Philip Hadlow

Tel/Fax: **01525 874100**

Mobile **07768 277 532**

info@toddingtonifa.co.uk

www.toddingtonifa.co.uk

**Free Will with Investments & Pensions placed through us of over £50,000 and within 6 months of investment
Talk to us for a free initial consultation**

Toddington Independent Financial Advice Ltd is authorised and regulated by the Financial Conduct Authority.

Registered office: The Stables, Griffin Farm, Conger Lane, Toddington, Bedfordshire, LU5 6BT

Registration Number: 760687 Company Number: 9931606



EDLESBOROUGH TENNIS CLUB

**Come and play tennis
with us at our friendly
club on The Green**

- High quality floodlit courts with easy booking system
- Coaching available for adults and children from our LTA coach
- Weekly club nights, with balls and floodlights provided

Contact us at:
enquiries@etctennis.org
or visit us at:
www.etctennis.org



Eaton Bray Cricket Club (Est 1914)

- 2 Teams Herts League
- 1 Team Beds Sunday League
- 1 Team Village T20 League
- 1 Team Ladies Softball
- 5 Junior Teams
- U9 U11 2xU13 U15

**Good on and off field facilities
Come and join a progressive
family friendly cricket club
For more information
please contact us on**

**Facebook & X
@EatonBrayCC**



Eaton Bray Cricket Club 100 Club Winners

January

£25	Peter Robinson	No 34
£10	Neil Scott	No 25

February

£25	Avis Fowler	No132
£10	Peter Robinson	No 99

Eaton Bray Cricket Club is kindly sponsored by Meadow Marquees, ECL Howard Watson Smith LLP, Tops Tiles and SMSS Ltd

Edlesborough Baptist Church

**All are welcome to our 11am
service every Sunday**

Keep up to date by visiting:
www.edlesboroughbaptist.wix.com/home

Find us on Facebook @gbce2014

Quiz Answers

See quiz on page 24

- James Corden
- Toffee
- Bambi
- Violet Beauregarde
- Sheepdog
- Renee Zellweger
- Donnie Darko
- Timothee Chalamet
- Margo Robbie
(Now Staring as Barbie!!)
- Judy Garland

Seasonal March Recipes

Cod, Potato and Spring Onion Stew

Ingredients

1 onion, peeled and finely chopped
1 leek, washed and finely sliced
extra virgin olive oil
2 medium courgettes, halved lengthways
1 kg potatoes, peeled
2 anchovies
1 wineglass white wine
565 ml milk
565 ml organic stock
1kg cod fillet, skinned and pin-boned
salt
freshly ground black pepper
1 handful fresh flat-leaf parsley, roughly chopped
1 bunch spring onions, finely sliced
½ lemon, juice of

Method

In an appropriately sized large pan, slowly fry your onion and leek with around 5 tablespoons of olive oil for 5 minutes until soft and tender. With a teaspoon, remove and discard the fluffy tasteless core from the

courgettes and grate the rest into the pan.

Chop the potatoes into rough 2cm dice and add to the pan. Give everything a good stir and then add the anchovies. Turn the heat up and add the white wine. Allow to cook down by half before adding your milk and stock.

Bring to the boil and simmer for half an hour until the potatoes are tender. At this point, add your cod and simmer for a further 15 minutes until the flesh flakes away; feel free to stir and break up the fish, but it's quite nice to leave some big chunks as well.

Season carefully to taste. Divide between your bowls, and serve with a small handful of parsley and spring onion dressed with a little olive oil and lemon juice.

Try sprinkling a little orange zest over the parsley and spring onion. It really works with the cod.



Spaghetti Aglio, Olio & Spring Greens

Ingredients

2 cloves of garlic
1 fresh red chilli
1 head of spring greens
400 g dried spaghetti
extra virgin olive oil
1 large unwaxed lemon
Parmesan cheese

Method

Peel and finely chop the garlic, deseed and finely chop the chilli and rinse and finely slice the spring greens.

Cook the spaghetti in a saucepan of boiling salted water according to the packet instructions, around 8 minutes.

Meanwhile, heat a drizzle of oil in a frying

pan. Add the garlic and chilli and fry for a minute or so, until the garlic is starting to colour.

Add the spring greens and cook, stirring occasionally, for 3 to 4 minutes or until the greens have wilted a little. Finely grate over the lemon zest.

Drain the pasta and add it to the pan with a splash of the water it was cooked in.

Squeeze over the lemon juice and serve topped with a drizzle of oil and a wispy pile of finely grated Parmesan.



*Churches Together in Eaton Bray,
Edlesborough, Dagnall and Northall*

***Easter services
in our villages***

***We welcome you to worship
this Easter***



Photo by Corinne Lovell

Christians in the four villages invite you to worship with them

CHURCH OF ENGLAND (Anglican Communion)

Parish Church of St Mary the Virgin, Eaton Bray with Edlesborough

(High Street, Eaton Bray)

Palm Sunday, 24 March	10.00am	Blessing of Palms and Sung Eucharist
Wednesday in Holy Week, 27 March	10.00am 7.30pm	Holy Communion Stations of the Cross
Maundy Thursday, 28 March	8.00pm	Holy Communion followed by The Watch (silent prayer)
Good Friday, 29 March	10.30am - 12.30pm 2.00pm	Messy Church in Eaton Bray Village Hall 'An hour at the Cross' (Devotional Service)
Easter Day, 31 March	10.00am	Sung Eucharist with Easter Egg Hunt

All Saints', Dagnall

Good Friday, 29 March	3.00pm	'The Way of the Cross' (service of reflection)
Easter Day, 31 March	10.30am	Family Communion Service

BAPTIST CHURCH NORTHALL (Chapel Lane)

200 years and still going. *A little Church with strong local links.*

Palm Sunday, 24 March	11.00am	Service with a Palm Sunday Theme
Maundy Thursday, 28 March	7.30pm	Service of Holy Communion
Easter Day, 31 March	11.00am	Service of Celebration – Christ is Risen from the Dead!

THE SALVATION ARMY (Eaton Bray, Booth Place)

Good Friday, 29 March	10.30am	United Service of Prayer and Reflection at Methodist Church, Eaton Bray
Easter Sunday, 31 March	11.00am	Easter Praise at Booth Place

EATON BRAY, EDLESBOROUGH & KENSWORTH METHODIST CHURCHES

Good Friday, 29 March	10.30am	United Service of Prayer and Reflection at Methodist Church, Eaton Bray
Easter Sunday, 31 March	10.30am	United Easter Communion Praise at Methodist Church, Edlesborough

ST MARY'S CHURCH RC, West Street, Dunstable

Please ring 01582 662710 for details of services



Easter

Easter is the most important and joyful Christian Festival.

It celebrates Jesus Christ's resurrection from the dead - three days after he died on the cross.

The Easter story is at the heart of Christianity

On Good Friday Jesus Christ was executed by crucifixion. His body was taken down from the cross and buried in a tomb.

The tomb was guarded and an enormous stone was put over the entrance, so that no-one could steal the body.

On the following Sunday some women visited the grave and they found that the stone had been moved and the tomb was empty.

Jesus himself was seen that day and for days afterwards by many people. His followers realised that Jesus had risen from the dead.

This Means:

That no one is outside of God's love. Everybody can begin again and can experience new life in Christ through faith in him and by the power of the Holy Spirit.

Churches Together in Eaton Bray, Edlesborough, Dagnall and Northall

is a visible sign of the Churches' commitment to the communities of which they are a part and to each other.



Rennie Grove Peace Hospice Care is delighted to announce the return of its annual London Bridges Walk – a family-friendly day out that takes in some of the capital’s most iconic bridges and landmarks.

With two different routes – one five miles long and the other ten miles – there is an option for all abilities. Walkers are encouraged

to bring not only their relatives and friends, but their canine companions too.

Taking place on Sunday 24 March, the two routes begin at the Pear Tree Café in Battersea Park. The five-mile route then takes in five famous London bridges, ending at Parliament Square. The longer ten-mile route takes in no fewer than 12 bridges, ending with arguably the most recognisable one of all – Tower Bridge.

All participants will be awarded a medal on completion, as a keepsake from the day and a reminder of what they have achieved.

The money raised through entry fees and sponsorship will be used to fund vital care and support for people living with progressive life-limiting illnesses in Buckinghamshire and Hertfordshire.

Becky took part in last year’s London Bridges Walk in memory of her mum, Dorene, who was cared for in the Peace Hospice Inpatient Unit at the end of her life.

Becky said: “Mum was diagnosed with bladder cancer in September 2022 and within a couple of months, we learned that her cancer had become terminal. It was then that we found out there was a bed available at the Peace Hospice. From that point on, Mum got her dignity back - she had a really peaceful, pain-free, dignified death and that’s all that we could ask.”

“We decided to take part in London Bridges as a family because we wanted to give back and do something in memory of Mum – that’s what she would have appreciated and wanted. It was lovely to be in London and to take in the sights of the city at the same time as appreciating why we are all there – to remember Mum.”

Tracey Hancock, Director of Fundraising at Rennie Grove, says: “We’re delighted to be bringing this popular event back. The London Bridges Walk is a fantastic family day out. You walk at your own pace so there is time to stop for a coffee or buy lunch along the route if you like.”

“I’d like to thank our sponsor, Origin Global, for supporting this year’s event and ensuring we can raise even more money to fund our vital services for local people living with life-limiting illnesses.”

Tickets cost £15 for adults and £10 for children (under 5s are free). To find out more or book your tickets, visit renniegrove.org/londonbridgeswalk.





Northall Baptist Church

200 years and still going

A little Church with strong local links

No Greater Love

At the end of this month, we are approaching the most important time of the year for a Christian. We have enjoyed the pancakes on Shrove Tuesday when it is traditional to use up rich foods before a period of more frugal eating or fasting in the days leading up to Maundy Thursday and Good Friday. This year these will be on Thursday 28th and Friday 29th March.

Maundy Thursday marks the day that Jesus held the last supper with all twelve of his disciples, celebrating Passover. There are many famous paintings of this event. It would have been a very poignant occasion. Only Jesus really knew what was going to happen later – sin had to be addressed and this had hitherto involved a temple sacrifice. The Lord Himself was now to be the sacrifice. Jesus had said in John 15 “greater love has no-one than this that he lay down his life for his friends”. He goes on to say “you are my friends if you do what I command. This is my commandment; Love each other”.

Jesus was betrayed by one of his own disciples, Judas, who was tempted by Satan. Having known the love and teaching from Jesus for around 3 years, Judas was still vulnerable to the temptation of Satan.

Jesus, though, continued steadfastly to show his love for those who trusted in him. He knew that the only way to save them and ultimately us, was to continue what he had come to earth to complete. He was put through a sham trial and sentenced to death, condemned for something he hadn't done.

Jesus was asked if he was the Christ and he replied that he was. The high priests chose not to believe him and thought that after Jesus' death on Good Friday that their problem had been sorted. The truth had been explained in John 3 v 16 “For God so loved the world that he gave his one and only Son”. The authorities did not count on the events of Easter Sunday. The Resurrection. Only 3 days later God raised his Son and he was seen alive by many. Matthew 28 tells us that the Roman guards who witnessed the living Jesus, reported this to the chief priests, who together with the elders bribed the guards with a large sum of money, to spread the story that the disciples had stolen the body.



*The Empty Tomb – Jesus has left
(Illustration by Freepik)*

God gave his Son, Jesus to die for us on a cross. There can be no greater love than this. Believe on the Lord Jesus Christ and you will be saved. Enjoy your Hot Cross buns and Easter eggs but remember the true story.

Our Sunday services are in the Church at 11 am. We'd love you to join us for our worship and song. You will get a warm welcome. For those unable to attend in person we also stream our services.

For those interested in the history of Northall Baptist Church, a free copy of the booklet, *Rebels in Green Pastures* can be supplied or downloaded from our website: <http://northallbaptistchurch.org/>

✉ Ruth Cox Tel: 07791 425625

Moira's Therapeutic Pilates



St Judes Clinic
Moira's Therapeutic Pilates

Helping you be your best self

**'HELPING YOU TO BE YOUR
BEST SELF'**

For local Pilates classes aimed at injury recovery and prevention with an APPI qualified Pilates Instructor and Chartered Physiotherapist.

'Let Pilates help you live the life you want to lead'.

For more information:
www.stjudesclinic.com

Or email:
moira@stjudesclinic.com

**Moira's Therapeutic
Pilates Classes.**

Billington Village Hall:

Tuesdays 1.30 pm – 2.30 pm

*Wednesdays, 7 pm – 8 pm &
8.05 pm – 9.05 pm*

Great Gaddesden Parish Hall:

Fridays, 10 am – 11 am

CDM Builders Ltd
07984086029

GENERAL BUILDING
NEW HOMES
EXTENSIONS
CONSERVATORIES
ALTERATIONS
BRICKLAYING
GROUNDWORK
PATIOS

DIGGER AND/OR DRIVER FOR HIRE

With over 20 years experience in the building trade

All aspects of work undertaken by our own professional tradesmen to a very high standard

Please contact Clive for a free quotation
T: 01582 203825 M: 07984086029

Email: Clive.munt@hotmail.co.uk
Springbank, Bottom Drive, Eaton Bray LU6 2JS



Our aim is to provide an outstanding professional, cost effective and friendly service

- ✓ Established over 50 years
- ✓ Traditional values with forward thinking and modern technology
- ✓ Full range of business and personal accountancy and tax services
- ✓ Latest cloud software
- ✓ Free initial meeting



Tel: 01582 608601
99 High Street South,
Dunstable, LU6 3SF

Contact us today:
enquiries@stotengillam.co.uk
www.stotengillam.co.uk
f @stotengillam



...for all your pest solutions

Peter Tong
(RSPH Level 2)

01525 220653
07958 669706

Email: peter@nimbypest.org.uk
www.nimbypest.org.uk



March! March! March!

I am so pleased to report that the members, staff and volunteers at The Wednesday Club have been very busy this last month ... by the time you read this we shall have had 2 sessions of revisiting games, books, stories and tales from our youth. This came about via a subject and hopeful visit request from our young friends at Dagnall School. Sadly, logistically their Thursday slots became unworkable for our Wednesday's availability despite offers of lifts and diary reshuffles we simply could not make things work. However, the subject of toys, games, books of our childhood became a great topic for us to explore. Locks were investigated, cupboards turned out, dolls dusted off, shove ha'penny uncovered and for the past fortnight great merriment has been shared. Photos have hopefully been shared with the school.



It's also been a good motivator to get up and move about, and a mixer, as "creatures of habit" we sometimes gravitate to more familiar faces - congregating around the activity table has provided the opportunity to get to know more about their Club neighbours they'd yet to converse with. Another Win Win - plus (on a personal note) it was great to reconnect with Carol, my 58 year old Doll - even if she still insists on baring all ...

Maybe Carol had heard about our status with **Warm Spaces**? I do hope so, with support from Central Bedfordshire Council we are now officially part of a network of over 100 free Warm Spaces. Many of those offering Warm Spaces are Libraries, Community venues and Leisure Centres. Everyone in need of a hot drink and shelter from the elements is able to access support from us as outlined below. We've always got time for a cuppa, chat and will ensure we have a spare comfy chair to hand.

Support with the cost of Living info: https://www.centralbedfordshire.gov.uk/info/165/support_with_the_cost_of_living/1264/warm_spaces

Warm Spaces Online Directory:

https://www.centralbedfordshire.gov.uk/directory/110/warm_spaces

The Wednesday Club, Warm Spaces details on the Online Directory:

https://www.centralbedfordshire.gov.uk/directory_record/160022/northall_and_district_day_centre

Fundraising for February centred around the Quiz Night, hosted by Gordon Gray, on the 23rd (pre Focus submission date). We are All so very pleased to have Gordon

back with us all and thank him so much for his generosity of time and knowledge.

One-Off Volunteers: Armchair Yoga anyone? Qualified Instructor required for taster session at Club.

Entertain us with your talent for singing or playing music ... want to practice in front of an appreciative audience to brighten their day? I believe we have some dates for the Diary too - this feels like an infomercial so apologies - normal service resumes Next month.

APRIL - Tea/Coffee Afternoon TBC - Music Quiz Night III TBC

JUNE - Fun & Games in The Sun! 26th Join us for Tea/Coffee & Cake with Outdoor Games

OCTOBER - Yeah ... I know right? 4th ... Harvest Auction

Becoming a Club Member? Simply contact us on 07854 230243, leave a text or message including your contact details, and our leader Dee will get back to you ASAP with a date to visit, our availability or the option to join the waiting list.

Volunteering with us? We're always delighted to welcome inquiries and offers of support from our community. Whether a regular commitment, a one-time contribution, there are various ways to get involved.

Regular Rota Volunteers: If you have a passion for lending a hand, we have opportunities in the kitchen or as minibus drivers/conductors. Your consistent support working as part of a team keeps our activities running smoothly.

Your donations of goods can go a long way to support our activities: We gladly accept and appreciate regifting and items for fundraising, plus those seasonal fruits and vegetables enhance our homemade meals.

For the latest updates, information, and any last minute announcements, be sure to follow us on Facebook at <https://www.facebook.com/WednesdayClubNorthall/> It's a great way to stay connected with our wider community and see how successful our reels are. (TikTok mastery next)



The Big Walk

Step up and make a difference

Walk for Pace and make a huge difference to our inspirational children, who face mobility challenges every single day.

Three routes:
18, 12 and 6 miles along the ancient Ridgeway.

21st April

Sign up now
thepacecentre.org/event/the-big-walk24/

Email kelly.houghton@thepacecentre.org | thepacecentre.org | [f @thepacecentre](https://www.facebook.com/thepacecentre)

Registered Office: The Pace Centre Ltd, The Blakelby Carpark, 05 Woodrow Rd, Astbury, 1922 8H | Company number: 2701907 | Registered Charity No. 108182



The Gentleman Gardener

Let your local RHS qualified gardener make your garden beautiful, from simple garden maintenance to total redesign of your garden.

Please call Barry on
01525-222451 or
07541196384

to pop round for a free chat.



All Aspects of Pressure Washing

- Roofs cleaned and coated
- Block Paving Refurbished
- Driveways/Patios/Pathway Cleaning
- Building Fascia/Cladding Cleaning
- Gutter Vacuuming
- Fascias & Soffit Cleaning
- Graffiti/Chewing gum removal
- Conservatory Cleaning

0800 298 5883

www.greatoutdoorscleaning.co.uk



MEMBER OF THE FEDERATION OF SMALL BUSINESSES

Nursery to Year 6



We welcome
you to view our
happy small
school.

Please contact
the office to
arrange a visit.

www.dagnall.bucks.sch.uk - T:01442 842473

office@dagnall.bucks.sch.uk - Main Rd South, Dagnall, HP4 1QX



Westrope Butchery
Makers of Bunkers sausages

**17 The Rye
Eaton Bray
LU6 2BQ
01525 868620**

Opening hours

Tuesday - Friday 08:00am - 5.30pm

Saturday 08:00am - 4pm

Sunday 08:00am - 12pm

**Find us on social media - The Westrope Butchery
Local farmers & family butchers
www.thewestropebutchery.com**



**EDLESBOROUGH
PRIMARY ACADEMY**

**Inclusive education that
inspires inquisitive learners**

'I'm very grateful for such a good school
for my children to walk to, thrive in and
feel that they belong to.' — **Parent**



01525 220431 · EPAManager@epa-primary.org · epa-primary.org
Edlesborough Primary Academy, High Street, Edlesborough, Dunstable, Bedfordshire LU6 2HS

Edlesborough Primary Academy is part of the Knowledge Schools Trust.

Down the Lane

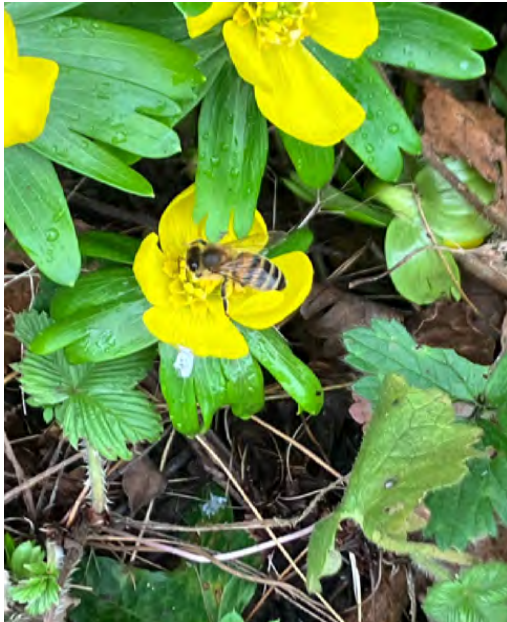
The star plant of my garden at the beginning of February must be *Cornus Mas*, also known as *Cornelian Cherry*; a deciduous shrub with masses of small yellow flowers which has been flowering for a month. This is the first year that it has flowered. I have no idea whether I bought it or if it was given to me so it came as a complete surprise when the flowers appeared. It took me a while to discover its name in a nursery catalogue. It has dark green leaves



which turn red-purple in the autumn and bright red cherry-like fruit which are loved particularly by thrushes and finches, and gives year round interest in the garden.

Another *Cornus* which looks lovely at this time of year, especially when the sun catches it is *Cornus Abla Elegantissima* which has bright red stems. It needs cutting down to 10cm above the ground in the spring. It is deciduous with pretty greyish green, white-margined leaves.

Having just mentioned finches I watched a goldfinch in the garden this morning. It landed halfway down the stem of a *Verbena Bonariensis* and then hopped along to the seed head, bending the stem so that the seed head reached the ground. The bird ate the seeds and then fed on those which had fallen to the ground! Much more interesting than having a bird feeder in the garden. I will make sure that I grow a lot of *Verbena* this year. Some of the plants overwinter and lots of seeds germinate, especially in the gravel so I will transplant some into the borders.



I have already seen bees in the garden attracted by winter aconites and pulmonaria. They also like hellebores. I have stinking hellebores which only last a couple of years but readily seed themselves. There are also various white ones and some with dark flower shades.

Let's hope we have a dry spell soon as the soil is too wet to stand on or work at present.

✍️ Sally Taylor

Valentines Day Purr-fume Donations

Loved-up lions at the UK's largest zoo are running low on their favourite scents, so their keepers are asking for donations of any unwanted Valentine's gifts.

Zookeepers at Whipsnade Zoo in Bedfordshire, UK, are asking the public to donate their unwanted Valentine's Day fragrances to the Zoo's new pride of African lions, who love nothing more than discovering new smells.

The conservation zoo's trio of lions, male Malik and females Waka and Winta, are encouraged to put their hunting prowess to good use by zookeepers, who employ a variety of tactics - like perfume-scent trails around the big cats' habitat, or dousing hessian snacks in a strong aftershave and hiding them in trees and behind rocks - but the lions' love for perfume has meant the Zoo's stocks are running low.

Keeper Steve Merrick-White said: "Lions - like all big cats - live in a world dominated by scent. Their powerful sense of smell helps them to find food and water, and perhaps most importantly, sniff out a potential mate - they can tell when another lion is nearby simply by smelling them."

"Spraying perfume on trees, in the long grasses or even in straw-filled hessian sacks allows our young pride to test out their hunting skills and utilise their magnificent sense of smell - but we get through a lot of it!"

"We've all had to grin and bear being gifted perfume or aftershave for Valentine's Day that we're simply not a fan of. But rather than let it gather dust on your bathroom shelf, you can give it a second life and donate it to the big cats at our conservation zoo," he said.

Lions, like all cats, have an extra smelling organ on the roof of their mouths called the Jacobson Organ. Steve added: "If you see a lion grimace, they're not unhappy, they're opening their mouths to take a large sniff of air. This allows lions to smell prey, or detect another lion, from more than five miles away - it's what makes them king of the animal kingdom".

Sisters Waka and Winta moved to Whipsnade in May 2023 from Belgium having been matched with Malik, who moved to the conservation zoo from Germany, as part of the European Endangered Species Breeding Programme (EEP).

"While people may look online for love, it's not so different in the animal kingdom. Waka, Winta and Malik have been paired together by a special matchmaker, but rather than shared hobbies or music tastes it's because of their genetics."

"It's been 17 years since Whipsnade Zoo last had African lion cubs, so fingers crossed we won't have too long to wait. It would be great for Whipsnade Zoo to play a part and be able to boost the number of African lions.

Three quarters of African lion populations are sadly declining in the wild, driven by large-scale habitat conversion, the loss of prey through unsustainable hunting, as well as human/wildlife conflict.



ZSL, the conservation charity which runs Whipsnade Zoo, is working across Africa to help save animals on the brink of extinction by establishing community surveillance networks that collect and report vital information to stop illegal activities such as poaching, illegal mining and logging, as well as monitor law enforcement activities.

To book tickets today and find out more head to www.whipsnadezoo.org



Your local
GUTTERBUSTER
 cleaning & repairing your gutters
 01442 874540
 07749 977997
adam@localgutterbuster.com



To us, it's not just another funeral. We care for your loved ones as though they were our own.

NEVILLE. Because there is a difference.

DUNSTABLE

Globe House, 84/88 High Street South LU6 3HD

t: 01582 320290

e: dunstable@nevillefuneralservice.com

www.nevillefuneralservice.com



All Trees



Reliable & friendly service • Family run business
Competitive prices • Qualified advice • Fully Insured

Tree work undertaken

**Tree felling • Precision dismantling • Crown reduction
Crown thinning • Crown lifting • Formative pruning
Stump grinding • Stump removal
Deadwooding • TPO / conservation area work**

Hedge work undertaken

**Hedge reduction • Hedge planting • Hedge trimming
Shrub clearance • Hedge laying**

Other Services

**Fencing • Soft Landscaping • General Garden Maintenance
Green Waste Recycling • Tree Lighting • Logs / Kindling**

CALL NOW ON:

07522 847 827

01525 220 823

E: info@alltreesgardenservices.co.uk

W: www.alltreesgardenservices.co.uk

Eaton Bray Cricket Club



Good numbers attending the indoor net sessions at Dunstable Town CC from 8-9 every Wednesday until April. Chaps look keen to be ready for the new season. Off field activities are being planned the first of which will be the annual Race Night in May. Date TBC. No equine knowledge needed just a bit of luck.

Fixtures for the Herts League have been released.

1st X1 Division 6B

May 11th Stevenage 3rds Home
May 18th Knebworth Park 2nds Away
May 25th Old Elizabethan 2nds Home
June 1st Ickleford 2nds Away
June 8th Southgate 2nds Home
June 15th Hertingfordbury 1sts Home
June 22nd Hatfield & C 2nds Away
June 29th St Margaretsbury 2nds Home
July 6th Aldenham 1sts Away

2nd X1 Division 10 West

Chorleywood 3rds Away Return July 13th
Northwood 3rds Home Return July 20th
Berkhamstead 4ths Away Return July 27th
Lutonian 3rds Home Return Aug 3rd
West Herts 6ths Away Return Aug 10th
Langleybury 3rds Away Return Aug 17th
Ley Hill 2nds Home Return Aug 24th
Tring Park 4ths Away Return Aug 31st
Flitwick 4ths Home Return Sept 7th

Fixtures Beds Sunday League

April 28th Offley & Stopsley Home Return June 9th
May 5th Dunstable Town Away Return May 26th
May 12th Godmanchester Town Away Return July 7th
May 19th Markyate Away Return July 14th
June 2nd Wolverton Town Home Return Aug 18th
June 23rd Bedford Away Return July 21st
June 30th Biggleswade Away Return Aug 11th
July 28th Ickwell Away Return Aug 25th

Fixtures Ladies Soft Ball

June 17th Lutonian Home
July 8th Luton Town & Indians Away
July 22nd Lutonian Away
Aug 12th Luton Town & Indians Home

Eaton Bray Cricket Club are always looking out for new players of any age or ability. We run 2 senior teams in the Herts League and a senior side in the Beds Sunday League. 5 Junior teams at aged U9 U11 2xU13 U15 and a Ladies Softball team. If you would like to join a progressive family friendly club pop down to the Rye Gardens or get in touch via Facebook or X @EatonBrayCC. The club would like to thank our sponsors Meadow Marquees The Westrope Butchery Fine & Country Homes Prestige Kitchens and the Focus Magazine for their continued support. Please enjoy your cricket with Eaton Bray in 2024.



Birds of Bray
Newspapers wanted regularly
Please call Chris or Sue Mitchell
on 01525 221128 who can collect
Answer machine in use if unavailable

Your Photos



Top left: Dawn breaking over Dagnall by Joan Gardner

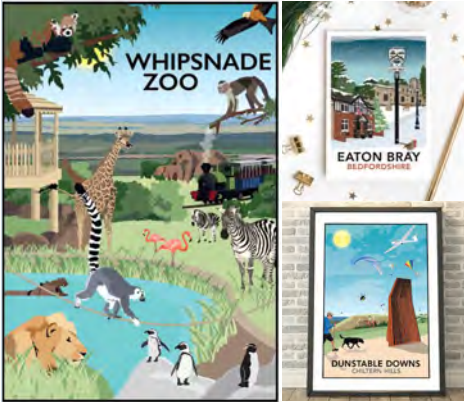
Top right: Eaton Bray Playground by Matthew Gray

Bottom: From Beacon towards Dunstable Downs winter by Richard Woodhead



PRINTS INSPIRED BY THE OLD RAILWAY POSTERS

Designed in Eaton Bray
by Tabitha Mary



www.tabithamary.co.uk



tm TABITHA MARY
Creating Travel prints since 2012

Eaton Bray Dairy

QUALITY MILK DELIVERY SERVICE

Direct to your doorstep!

Eaton Bray Dairy deliver fresh milk and goods direct to your doorstep
3 days a week, 52 weeks a year by 8:00am



We pride ourselves in offering a reliable and quality service. Offering the best prices, delivering all types of milk in glass bottles or plastic to suit your preference.

Quality groceries supplied by Pecks Farm Shop, Eggington and delivered with your milk.



For more information please call

Steve on 07308 300793
eatonbraydairy@gmail.com
www.eatonbraydairy.co.uk




Charlotte Lyons Physiotherapy

Keeping You Active
Physiotherapy Clinic
Leighton Buzzard
Open Monday to Saturday
Providing Expert Clinical Care

Treating Muscle, Tendon, Joint, and Nerve Injuries. Rehabilitation including Pre and Post-Operation, Sports Injuries and Dizziness.

Craven House
Water Lane, Leighton Buzzard
LU7 1FA



Book online:
www.charlottelyonsphysiotherapy.com
charlottelyonsphysio@gmail.com
07446 765945

BELLOWS MILL

Eaton Bray



Licensed for
Wedding Ceremonies

Idyllic lakeside setting or barn available for up to 80 guests.

For more information or to arrange a viewing email Rachael on reservations@bellowsmill.co.uk

www.bellowsmill.co.uk



0%
FINANCE
AVAILABLE

A team you can put your trust in.

Here at Paramount Plumbing & Heating, we believe that trust and reliability is what makes us stand out from the rest. With over 30 year's experience, we have the knowledge to overcome any issues and deliver an outstanding customer service.

Contact us today for your free quotation.



- ✓ Boilers and Boiler Breakdown
- ✓ Heating Systems and Bathrooms
- ✓ Air Source Renewables
- ✓ Servicing and Maintenance
- ✓ Landlord Safety Inspections
- ✓ Power Flush



☎ 07810 115 611 ☎ 07917 054 045
 ✉ info@paramountplumbing.co.uk
 🌐 www.paramountplumbing.co.uk



A committee run pre-school set in Dagnall Village Hall for children aged 2 to school age

We operate five mornings a week from **9:00 - 12:00**



Ofsted Comments

- Staff are consistently kind and caring which supports children to develop confidence and resilience
- Teaching is consistently good and children's safety is given the highest priority
- Children learn good manners and know how to treat each other with respect



If you think your child would be happy here please phone our Pre-School Leader, Ann Tobin on 07816 358 342
www.dagnallunderfives.co.uk

Eaton Bray History

The Cricketers Beer Shop Eaton Bray

(courtesy of the Bedfordshire Archives)

Surviving documents only show this as a public house in 1843 and 1844 but it seems likely that it was open from 1831 until 1850 or just before. In 1758 the building was sold by Joseph Whinnett to William Mead, a carpenter from Eaton Bray. In 1826 his son, another William, and another carpenter, though living in Leighton Buzzard, mortgaged it. He died in that same year and the cottage passed to his son, yet another William who remortgaged the property in 1828. The property was copyhold of the Manor of Eaton Bray and the court rolls describe it simply as a messuage in Eaton Bray with four butts of arable lying on the backside of the building and comprising about an acre. It was certainly not a licensed premises at this time as it does not appear in the countywide lists of licensed premises from 1822 to 1828.

In 1831 William Mead sold the property to Thomas Burr of Dunstable. Burr was a brewer and had been plying his trade in Dunstable since at least 1806. It seems likely, therefore, that it was about this time that the private house became a public house. If it was called the Cricketers at this time it is a remarkably early reference – pre-dating the formation of the first county club, Sussex, by eight years and the great growth in the popularity of the game fostered by the creation of the travelling All England XI by fifteen years. Today the position, in Green Lane, seems out of the way but in the 1830s the property would have faced the Great Green and we can assume that cricket was being played on the area which, today, is still the recreation ground, as is labelled so as early as the inclosure map of 1860.

Thomas Burr died in 1835 and left the Cricketers, as well as his brewery and all its tied premises to his nephew Edward Burr. In 1840 Edward was admitted to the property and it is still referred to simply as a messuage but it seems unlikely that it was not licensed by this time – descriptions in court rolls and deeds are often out of date and do not necessarily reflect the status of a building at the time.

In 1843 Edward Burr put his Dunstable Brewery up for sale by auction and The Cricketers Beershop, as it was called, was Lot 41. It comprised a parlour, a tap room, a washhouse, a cellar and three bedrooms. Outside stood a yard, a barn, a shed, a range of stabling, a wood lodge, a small garden and an orchard. The beershop also had: “a piece of capital arable land containing about an acre, lying in the Common Field ... two common rights for one cow each, or one horse together”. The annual rent was £14. This is the first explicit reference to the property being licensed.

The Cricketers was bought by its tenant George Abraham (also Abrahams), for £200. He had lived in the premises since at least 1831, when he had shared it with Michael Puddefoot or Puddephatt, so the property was presumably then divided into two separate dwellings. George Abraham sold the property to David Abraham in 1850 for £280 and by that time it was described as formerly a public house called the Cricketers. George Abraham is also described as formerly a victualler, now a farmer.

Whether the Cricketers was ever a public house is open to doubt. It is referred to as a beer shop (just that, an establishment selling beer but not spirits) in 1843 and a directory of 1847 refers to George Abraham simply as beer retailer indicating that he

simply sold beer rather than running a fully licensed public house, which would have been referred to by name. The statement that it was a public house only comes in court rolls after it had closed and so may not be accurate. David Abraham sold the cottage to Lord of the Manor Arthur Macnamara in 1864 for £400.

It is fortunate that the court rolls note that the land attached to the property was swapped for newly inclosed fields when Eaton Bray was inclosed in 1860. The two new inclosures are shown on the inclosure map which also shows the building, which was in Green Lane. In 1915 the Manor of Eaton Bray was sold at auction, the former Cricketers with it. The sale particulars are as follows:

LOT 1

A FREEHOLD SMALL HOLDING

Of about
5a. 3r. 37p.

Situate in "The Rye" at the Northern extremity of the Village of Eaton Bray, within a mile of Stanbridgeford Station on the Dunstable Branch of the London and North-Western Railway, equi-distant about four miles from the market towns of Leighton Buzzard and Dunstable, and 11 miles from Hemel Hempstead. It includes

A Two-storied Dwelling House

Brick and half timber-built, with partly thatched and partly slated roof, containing Two Bed Rooms, Living Room, Kitchen, wash-house and Pantry, with Garden

OUTBUILDINGS

Adjoining, timber and corrugated built, of Small Barn, Stable, Cart Shed and Loose Boxes, with Foldyard and Two Grass Orchards and an Arable Field
One of the Orchards abutting upon the high road to Stanbridgeford and Leighton Buzzard

The property was let to Jeffrey Archer at a rent of £42 per annum. He bought the place at the auction for £420.

The Rating and Valuation Act 1925 specified that every building and piece of land in the country was to be assessed to determine its rateable value. Eaton Bray, like most of the county, was assessed in 1927 and the valuer visiting the former Cricketers found it still owned and occupied by Jeffrey Archer who still had a small farm. The house comprised a living room, a kitchen, a scullery, a washhouse and two bedrooms which were "in the roof". The valuer commented: "Lot of it" and "Poor place". The farm buildings comprised a north block built of weather-boarding and corrugated iron and consisting of three loose boxes, a stable for three horses, another loose box and a large loose box; a north block, built of the same materials, comprised a stable, a small barn and two piggeries. An old brick and thatched cottage was also used as a store. Archer had 5.707 acres split into four fields – 2.532 acres, 1.342 acres, 1.422 acres and 0.157 of an acre all laid down as orchard "young trees at one end, others first class"



Milo's Paws & Pals

Home from Home Dog Boarding
Based in Eaton Bray

5***** License no: CB/LANW/22/009205
Great Country Walks, Insured/Pet First Aid

Find us on Facebook or Instagram
For more details or to book a meet & greet



Contact Vicky 07747 484763
Email milospawspals@gmail.com
www.milospawsandpals.co.uk



WHITE WATER

Driveway, Patio & Decking Cleaning

01582 471692 | 07738 434787
email: info@white-water.co.uk
www.white-water.co.uk



Outside In FLORAL CREATIONS

Blending passion & nature's beauty for bespoke floral artistry
BOUQUETS ARRANGEMENTS TRIBUTES

Jo Reay 07580157932

Laptop & Computer

Server, Printer, Apple, Setup, Repairs,
Data recovery, Internet, Wireless, Network,
Virus infection, Home/Office computer problems.

Services from £40.

Your local IT support, 7 days services, we visit you

No Fix - No Fee

Qualified, Experienced

PClapprepairs@gmail.com

01525 306316 – 07925 338435

Come for Coffee at St Mary's, Eaton Bray

For a warm welcome
and a cheering cuppa
each month in
St Mary's Church
Eaton Bray
10.30am - midday



1st Saturday of each month
(except July - 2nd Saturday)

We are based in Eaton Bray

YourNewBoiler.com[®]

A family firm, built on recommendation

Boiler On The Blink?

Call for a **FREE**, NO-OBLIGATION
Quotation Now

01525 620247



Proud Sponsors of EB LIONS U8's
Football Team



Web - www.YourNewBoiler.com // Email - rebecca@yournewboiler.com



BOSCH

Comedy

Barnstormers Comedy - 2 Mar
 Simon Brodtkin: Screwed Up - 14 Mar

The Players Theatre Company

Tonight at 8.30 by Noël Coward - Week
 Three - 7-9 Mar

Theatre

The Addams Family - 23 Mar

Music

Laurence Perkins & Yoshiko Endo - 16 Mar
 A Night of the Stars - 21 Mar

Event Cinema

Titanic The Musical - 12 Mar
 National Theatre Live: The Motive and the
 Cue - 27 Mar
 The Royal Opera: Madama Butterfly - 28
 Mar

Film

The Color Purple - 1 & 13 Mar
 Bob Marley: One Love - 15 Mar
 All of Us Strangers - 20 Mar

March at the Grove



Popular Music

Seven Drunken Nights - The Story of the
 Dubliners - 1 Mar
 Dreams of Fleetwood Mac - 2 Mar
 The Elvis Years - 7 Mar
 A Country Night In Nashville - 8 Mar
 That'll Be The Day 2024 - 9 Mar
 Scholars' Education Trust Music Concert - 12 Mar
 Steve Steinman's Vampires Rock - Ghost Train -
 15 Mar
 Shape of You - 16 Mar
 Someone Like You - The Adele Songbook - 16
 Mar
 Dreamcoat Stars 2024 - 17 Mar
 The Magic of the Beatles - 21 Mar
 Mercury - 23 Mar
 Lost In Music: One Night at the Disco - 30 Mar

Comedy

Fascinating Aida: The 40th Anniversary Show! -
 22 Mar

Variety

An Evening with Sir Geoff Hurst: The Farewell
 Tour - 14 Mar

Film

Argylle - 5 Mar
 The Color Purple - 6 - 19 Mar

Dance

Performing Arts Collective Limited - Annual
 Show - 3 Mar
 DanceMania 2024 - 24 Mar
 Graziano Di Prima: Believe - My Life on
 Stage - 28 Mar

Private Hire

King's House Moorlands proudly present
 Matilda The Musical Jr - 4 Mar
 Scholars' Education Trust Music Concert -
 12 Mar
 Coram Shakespeare Schools Festival - 26
 Mar

Musicals

Dreamcoat Stars 2024 - 17 Mar

Encore Screening

Madama Butterfly: The Royal Opera - 27 Mar

Children's Shows

There Was An Old Lady Who Swallowed A Fly
 - 10 Mar

*Ticket prices vary; for more information or to book, call the Box Office on 01582 60 20 80
 or visit the website at www.grovetheatre.co.uk.*



Nigel's Thoughts

Dear Friends,

By the time you read this we may hopefully be experiencing some drier weather and enjoying lighter evenings!

Easter is early this year (Easter Sunday is 31st March), and with it brings even more reasons for joy and gladness.

Our Easter celebrations are about new life for Jesus, and for all of God's children. Resurrection from death may speak powerfully to us, as the world wakes up from the darkness, cold and drabness of winter but it is not only about the change in the seasons.

The resurrection is about what happened for Jesus personally, and it is God's mighty act, through which he demonstrates his love for each one of us individually. We can begin again, because God continually offers us the possibility of a fresh start. This fresh start is not just for us, it is for all that has been made, the whole universe!

So when we are inclined to get downhearted about anything, be it the climate crisis; the wars which are raging across the world; the failures of government or opposition in this or any nation, or about our own lot in life. Let us remember that life can often be hard and a struggle, but we have one who enters into our distress because he knows us so well and loves us so much.

May we each find His love coming to us in Jesus, who is the risen and living lord because he came with love from God. He died for us and lives for us, and during this life we journey to him who will always be there for us.

A Very Happy Easter to you.

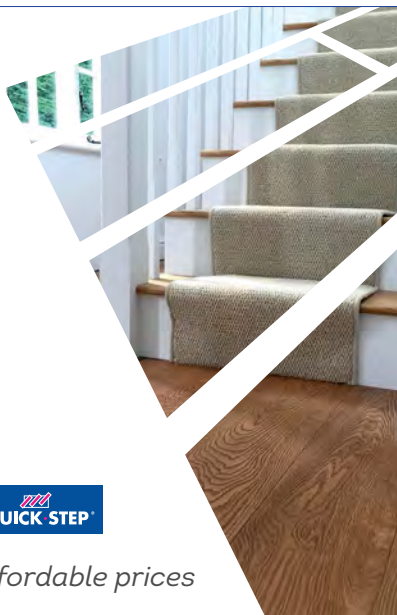
✍️ Nigel



- Real Wood
- Karndean Vinyl
- Carpet
- Laminate



Quality flooring and installation at affordable prices



T: 01908 477 809 M: 07977 575 010 aspleyflooring.co.uk

Sears & Co

village & country estate agents



**The family run agency,
specialising in the sale
& letting of village homes**

T 01525 657 330 E villageandcountry@searsandco.co.uk

3 Summerleys, Edlesborough. LU6 2HR

PLUMBING & HEATING ENGINEERS

OUR SERVICES INCLUDE:

- General Plumbing
- Boiler Servicing / Breakdowns / Aga & Rayburn Servicing
- Full Boiler Installs & System Upgrades

We work on Oil, LPG & Natural Gas - We are members of Gas Safe & OFTEC

CONTACT JUSTIN

Mobile **07770 918101**

Office **01525 220262**

Email justin@prmechanical.co.uk

WWW.PRMECHANICAL.CO.UK

All major credit
cards accepted



YEARDYE
LUXURY BATHROOMS

Installation Specialists

A FAMILY RUN
BUSINESS FOR
OVER 30 YEARS

Call **07872 328590**

✉ info@yeardyeluxurybathrooms.com

🌐 www.yeardyeluxurybathrooms.co.uk



An Amaryllis isn't just for Christmas



Someone is bound to give you one for Christmas. It flowers once – usually a spectacular trumpeting of large-scale colour – and then what do you do with it? Do your ‘amaryllis’ bulbs – which should really be called hippeastrums because a true amaryllis is the outdoor-flowering belladonna lily – refuse ever to sing for you a second time? If so, it’s a shame because if you’re nice to them they will bloom year after year. I have several currently in

bud for the fourth or fifth time. Here’s how.

Once the flower has withered, cut the stem off at the base with a sharp knife. Put the pot on a warm sunny window sill and feed it like mad with Baby Bio or some other all-purpose plant food from now until October. Remember school biology lessons and photosynthesis? What you want to encourage is a lot of nice healthy green leaves full of chlorophyll. Then the energetic sunlight can work with the carbon dioxide in the air and all that water you’re going to give the bulb several times per week to form the sugars which ‘feed’ the bulb.

In October slice all the foliage off cleanly and horizontally at the neck of the bulb. Then put bulb and pot away in a cool, dark dry place and forget about it for two months. The cellar of my Edwardian town house is ideal for this. A corner of the garage, shed or cupboard in an unheated spare bedroom would probably do just as well.

Exhume them just before Christmas, lifting the dry bulbs and their root systems carefully out of their pots. Shake off as much of the old soil as you can without disturbing the roots too much. Then put the bulbs in a shallow bowl of tepid water for an hour or two to soak the roots before re-potting.

Use roomy pots – 8 or 9 inch are best – and top quality bulb fibre. Put some pebbles or broken crocks in the bottom of each pot. This helps drainage and it makes the pots heavier and more stable as the plant grows. Fill the pots about two thirds with fibre. Ease the bulb into the centre of the pot and pack plenty more fibre around it, leaving about half an inch of the neck of the bulb exposed above soil level.

Keep the pots moist in a warm – not less than 60 degrees F – room and in the light.

Within a few weeks you should have a flower bud, or two or three if you’re lucky. This is the exciting will-it-or-won’t-it time which involves, if you’re like me, frequent close examination to see if I can see signs of life and much cheering come the happy day I spot the characteristic, slightly cloven, tip of an emerging bud. Amaryllis bulbs which have already flowered in previous years often show leaves before the buds appear. I rather like that because I think the flower stem actually looks more attractive surrounded by leaves than starkly solitary as it usually is in a first-year amaryllis.

Last year only one (out of seven) of my ‘old’ amaryllis bulbs has failed me. My usual practice then is to give the miscreant just one more chance. I treated it like the others during the summer – but if it doesn’t perform next spring I shall dump it. Sometimes they miss a single year but then go on to flower several more times.

A word about acquiring amaryllis bulbs in the first place. As with any other bulb the bigger the better, and the best hippeastrums certainly come from specialist growers rather than from supermarkets and garden centres. Shop about for Rilona – a beautiful salmon pink variety and Mont Blanc which is an exquisite pure white. A good bulb weigh more than half a pound

when you buy it and routinely puts up several flower stems. Both of these have flowered splendidly and serially for me.

The familiar supermarket amaryllis – usually Apple Blossom or Red Lion – tends to be a relatively slight bulb and is invariably packed with a very small pot and a diminutive bag of dusty, poor quality fibre. It is, I'm certain, presented like that only because it makes a handy easy-to-wrap gift. It is not because hippeastrums 'like' their roots to be constricted, contrary to what it might say on the box. Even if you can persuade it to thrive in a small pot, the grown amaryllis will be unstable and liable to tip – which it can't do if you anchor it in a larger pot. If you are given one of these 'gift pack' hippeastrums, the best thing to do with it is to jettison the provided pot and the growing medium. Instead plant the bulb in a decent sized pot with plenty of good bulb fibre. My Angelique amaryllis, for example, looked very sorry for itself when I took it out of the box in which it was given me a couple of Christmases ago. It was quite a small bulb, very shrivelled and had already dryly produced a sad, white, unpromising bent shoot. It reminded me of a neglected animal in need of a good home but I feared it might be beyond saving. Once, however, planted in a large pot, it soon sported two sturdy flower stems and an encouraging growth of green leaves. It has flowered annually since.

BMT
Love Bucks, Love Music

**AYLESBURY
COMMUNITY
ORCHESTRA**

**Did you used
to learn an
instrument as a
child?**

**Would you like to
make music with
like minded
people?**

**Are you looking to
develop your
playing as an
adult?**

**Come and join
Aylesbury
Community
Orchestra**

**Thursdays
7:30-9:30
Aylesbury Music Centre**

**www.bucksmusic.org
aylmusic@bucksmusic.org**

Castles

Multi-award winning
castlesestateagents.co.uk

Selling or letting your property?

We'll help you achieve a premium price. It's what we do best.

Book a **FREE** valuation online, call or visit your nearest branch.

Over
30 years

local property
experience

Eaton Bray

01525 220605

Berkhamsted

01442 865252

Kings Langley

01923 936900

Boxmoor

01442 233345

Coffee Tavern



Large Hall **£10.00 per hour**

Commitee Room **£5.00 per hour**

Large Hall & Commitee Room **£15.00 per hour**

Bookings 07836240467

Stairlift, access ramp and free WiFi available

Easter TENNIS CAMPS

Eaton Bray Tennis Club

WEEK 1 - 9am -11am Junior Tennis (11-18yrs)

WEEK 2 - 9am-11am Mini Tennis (4-10yrs)

Our camps combine fun and games with Tennis Coaching.

JUNIOR : WEEK 1 : 2nd / 3rd / 4th / 5th April

MINI : WEEK 2 : 8th / 9th / 10th / 11th / 12th April

4 days £50.00 • 5 days £65.00 • 1 day £14.00

10% sibling discount and 10% members discount.

Courses are run by Coach Jack Harvey (LTA Level 2) with an LTA License, DBS and Emergency First Aid.

All equipment is supplied but please wear sports clothing and suitable trainers. Ages 4-18 catered for.

Please scan the QR code to book your place.



For more information please call Sara Bamford 07561 571578



SCAN ME



Parties Wedding Receptions Stage Productions

Fitness Classes Business Meetings Beer Festivals

Film Shows Club Meetings Keep Fit Quiz Nights

Eaton Bray Village Hall

Capacity for 220 People Parking for 70 Cars Meeting Room Countryside Views

Bar Facilities Kitchen Facilities Full AV Facilities Baby Changing Wheelchair Access



For bookings or enquiries call: 07975 797 202/07852 586045
email: bookings@ebvh.co.uk

www.ebvh.co.uk



SF Babysitters

Babysitting service for weddings, special occasions, daytime and evenings out.



☎ 0797 952 1900

✉ sandy@sfbabysitters.co.uk

🌐 www.sfbabysitters.co.uk

NORTHALL BAPTIST CHAPEL

Chapel Lane, Northall

(just beyond the 30 speed limit signs on the road towards Leighton Buzzard)

Everyone is welcome to our Sunday worship each week between 11am and 12.30pm including tea/coffee and time to talk together.

For more information contact:

John Hazell 01525 218142

Email northallchapel@btinternet.com

Web: www.northallbaptistchurch.org

There has been a Baptist Chapel in Northall for more than 200 years. Today we continue to seek to worship God, serve him in our daily lives and support and encourage one another in the difficult and the joyful times.



07877 895585

Your local, professional and reliable auto bodyworks and paint repair specialist

Accident Repairs
General Paint Body Repairs
Lease Return Repairs
Free no obligation quotes
Email: info@smartspray.uk
www.smartspray.uk

YOUR LOCAL boutique



SHOP IN STORE FOR HONEST ADVICE, ASSISTANCE & PERSONAL SERVICE. SHOPPING AS IT SHOULD BE.



KINGS ROAD

LIFE • STYLE • STORE



VISIT OUR STORES IN
LEIGHTON BUZZARD
WOBURN SANDS

PHONE : 01525 376788

VISIT OUR WEBSITE



SCAN ME

Facebook icon @KINGSROADFASHIONS

Instagram icon @KINGSROADBOUQTIQUE

Globe icon KINGSROADFASHIONS.CO.UK

Wildlife Watching - March

www.wildlifeonline.me.uk

Mammals

We are now around the zenith for fox births in the UK, with most vixens having their cubs during the first half of this month. For the first couple of days, the vixen won't leave the cubs, particularly if it's very cold, and she's dependent upon her mate to bring food. Once the cubs are



a few days old, she'll leave for brief periods to drink and sometimes hunt. It'll be another four or five weeks before the cubs appear above ground, initially playing close to the earth before exploring further afield. If you have foxes visiting your garden or find them while out and about, the swollen teats of nursing vixens are usually plainly visible. If the vixen has a mate, he will hunt for her and the cubs, and this is often a good time to see foxes out during the daytime. In areas, such as our larger cities, where foxes live in extended family groups, aunts (and very occasionally uncles) may also help by hunting for the vixen and her cubs, babysitting and even wet-nursing the cubs. Interestingly, this isn't universally the case, and family members don't always lend a hand.

Foxes aren't the only ones with cubs this month. Many badger sows give birth during February and March, although badger cubs remain underground for longer than fox cubs and won't be seen around the sett for another six to eight weeks. Badgers don't store food, nor do clan members bring food back to nursing sows, so the new mother is forced to leave her cubs to forage.

Roe bucks are in the final stage of antler development at the moment and will shed their velvet in the next few weeks, while red and fallow deer will start to lose their antlers now.

Hedgehogs are coming out of hibernation now and, if you have a hedgehog feeder in your garden, now is the time to make sure it's cleaned out and re-stocked. Typically, males rouse from hibernation first and go on a quest for food and water to begin replenishing the fat reserves lost over winter. Leaving some food and fresh water out in your garden overnight can be a genuine life-saver for these spiky mammals.

Brown hares are getting amorous now. When male hares (bucks) detect that a female (doe) is coming into oestrus, they gather around her, and she may be shadowed by them for five days prior to coming into season. The doe will often try to escape her suitors, leading them on considerable chases around the fields. As the chases get underway, the bucks jostle for position near the doe and a hierarchy appears to develop. The dominant buck typically remains within about five metres (16 ft) of the doe's daytime form and will bite and chase other bucks that get too close. As the female gets closer to oestrous she attracts more bucks and, despite the dominant buck's best endeavours, she may be harassed. Periodically,



during this chase, two hares can often be seen rising up on to their back legs and jabbing at each other with their forepaws; this is a behaviour referred to as “boxing”. Early naturalists believed that boxing hares were competing males but, although bucks do occasionally box with each other, usually the boxing is a doe rebuking the attentions of an overzealous buck.

The observation that hares are “mad” in March, rather than any other month, is largely a feature of circumstance. The hare’s breeding season runs from January to October and by late February most does are either pregnant or suckling their first litter, so the mad mating chase and boxing happens during the winter too. By March, however, two important things happen: the nights have contracted such that more of this breeding activity spills over into daylight, and there are more people about in the countryside to witness the behaviour. So, despite hares boxing and chasing during both January and February, it was not until March that many early naturalists observed the behaviour, hence these endearing mammals became known as “mad March hares”.

Many of our small mammals are also active and it’s worth checking river banks and canal sides this month as water voles are starting to resume activity, having spent most of the winter largely restricted to their burrow system.

Birds

There is a lot of activity among the garden birds in March, with many species courting and nesting. Robins are particularly aggressive at this time of year as they pair up, and will chase most other similarly-sized birds away, red-breasted or not. Long-tailed tits are busy now too, and many will be raising their first brood; garden fat feeders are a good refuelling point for these busy little “flying teaspoons”.



Our garden blackbirds will start to sing their spring/summer song, treaclier in nature than their autumn/winter tune and giving a real sense that spring has arrived. March also marks the start of the blackbird breeding season. In his 1988 book, *A Study of Blackbirds*, David Snow described the courtship display of these thrushes. It consists of oblique runs by the male combined with head-bowing, an open beak, and a “strangled” low song, after which the female remains motionless until she raises her head and tail to allow the male to mate with her. Blackbirds are generally socially monogamous (i.e. the pair will stay together and defend their territory together throughout their lifetime), but genetic analysis suggests that almost 1 in 5 chicks may be fathered by a male other than the female’s territory mate.

With the winter migrants having largely gone, we start to see some of our spring visitors arriving, including wheatears, chiffchaffs and hobbies. There are also an increasing number of lapwings to be found, while some of the huge winter murmurations of starlings are starting to break up. Some species, such as grey plovers and curlew, are likely to be found on estuaries this month as they stop off on their way to their summer breeding grounds. Kingfishers will move back inland now to breed on our river systems; March is a great time to sit and watch their courtship behaviour.

If you’re out in the woods this month, keep an ear open for the drumming of woodpeckers; all three species (greater, lesser and green) make their presence known

at this time of year as they establish territories and start breeding. The tawny owls are also in fine voice this month, while buzzards are displaying and rooks starting to nest. Much further north, March heralds the peak of the breeding season of the black grouse in north Wales, northern England and the Highlands of Scotland, with spectacular displays and fights among the male birds as they vie for the attentions of the females. More ubiquitous but equally enthralling to watch is the courtship behaviour of the great crested grebe, which is happening on ponds, lakes and reservoirs across the country this month. The crescendo of this ritual is the “weed-shaking dance” (see February).

Reptiles & amphibians

There should be plenty of frogspawn adorning ponds, pools and puddles by now. Early clumps may be killed by frost, but typically it is only the top layer of eggs that is frozen and dies, with those below the ice level being relatively more insulated and more likely to survive. Prolonged cold weather in the spring can, however, result in slower than normal development of the spawn.

Adders emerge from their hibernacula now, although those in the south of the UK appear to do so later than those in the north. Males also emerge earlier than females, to get a head start on sperm production so they're ready for the females' arrival. Males overwinter in groups and will often spend the first week or two after emergence basking around the hibernacula before dispersing to search for mates and food. Grass snakes will also be active now, as will lizards. Good basking spots can be difficult to come by at this time of year, so if you disturb a snake out basking, it's worth retreating and waiting as they will often return to the basking spot once danger has passed – within about 20 minutes, in my experience.



Invertebrates

Keep an eye out for the furry “ginger bee” darting over flowers in sunlit woodlands, parks and gardens – these are greater bee-flies and, in our garden, they are particularly fond of forget-me-nots. It's about now I start seeing my first caterpillars of the year, and some to keep an eye out for this month are the stick-like swallow-tailed moth on hawthorn, ivy, privet and other shrubs, the striking yellow and black spotted six-spot burnet moth in open grassland, wide verges and waste ground feeding on bird's-foot trefoil and, toward the end of the month, the blue-grey and orange caterpillars of the lackey moth, which are widespread in the south of England and hang out in webs spun in hedgerows.

Butterflies active now include the small tortoiseshell, peacock and brimstone, while caterpillars of marsh fritillaries and silver-washed fritillaries can also be found. The buff-tailed bumblebee is Britain's largest bee species and the first bee on wing in this month, while the striking black and white Friesian-patterned pied shieldbugs emerge on white dead-nettles late in



the month. March is a bit early for our 'proper' grasshoppers, but a member of the Tetrigidae family, the common groundhopper, emerges from hibernation in this month. The spiders have resumed their activity now and there are likely to be plenty of wolf spiders out basking on leaf litter, while hoverflies are a more common sight this month.

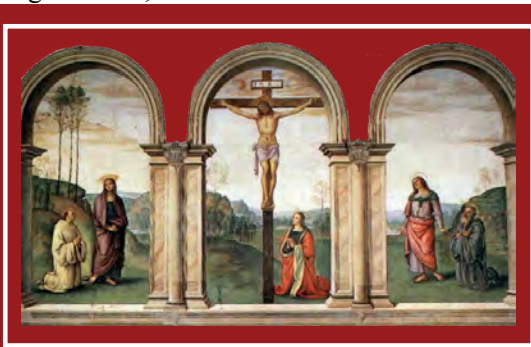
Plants & fungi

Depending on local conditions, there may be a few daffodils flowering in sheltered spots, large swathes of snowdrop (some now past their best), some primroses, small clumps of campion and even crocuses adding a splash of colour to the verges. Many trees are also now in bud and there are plenty of catkins to be found.

Streams and ditches are good places to look for newly emerged butterbur flowers, with their striking purple flowers arranged in pyramidal fashion. Old stone walls offer a great opportunity to look for delicate ferns and mosses, while the first sweet violet and lesser celandine are now flowering, adding a dash of purple and shining yellow, respectively, to our woodlands.

Sallow catkins are a draw for many insects, as is the foul-smelling arum lily, also known as “lords and ladies”. These unpleasantly-scented plants comprise a purple/yellow-coloured rod-like structure called a spadix, partially enclosed by a pale sheath (spathe), and are reliant on insects, particularly flies and midges, for pollination. They have a rather unique way of making sure their targets leave with pollen, too. The rancid smell, generated by the tip of the spadix as it gets warm, lures flies that slide down the shiny walls of the spathe into a ‘holding cell’ at the base of the sheath, from which they’re prevented from escaping by a fringe of fine hair-like projections at the top of the chamber. The stamens open and dust the flies with a shower of pollen and the flies then move around in the chamber, carrying pollen from the male cluster at the top to the larger female flowers at the bottom. Shortly afterwards, the hairs begin to wither and die and the flies can eventually flee their prison. Once fertilised, the female flowers become a cluster of bright orange and scarlet berries which can be seen later in the summer.

Fungi-wise, the bright yellow brain fungus, the delicate parasol-like porcelain fungus and the dark brown convolution that is the Jews’ ear fungus are waiting to be found this month.



DANESBOROUGH CHORUS

Saturday 23rd March 2024 at 7.30 pm
St Mary's Parish Church, Woburn

Bach St John Passion

Sam Harris Sam Hird Henna Mun
Alexandria Moon Owen Lucas Daniel Barrett
Alina Orchestra Conductor Ian Smith

Tickets: £25, £20, £10, under 18s £5
Book by phoning 01908 583460
or scan the QR code to book online.



Danesborough Chorus reg. charity no. 1188026 www.danesborough.org.uk

Dagnall Weather Station (AONB)

Weather Conditions for January 2024

Elevation: 450 ft - Latitude: 51° 50' 13" North - Longitude: 0° 33' 34" West



January 2024

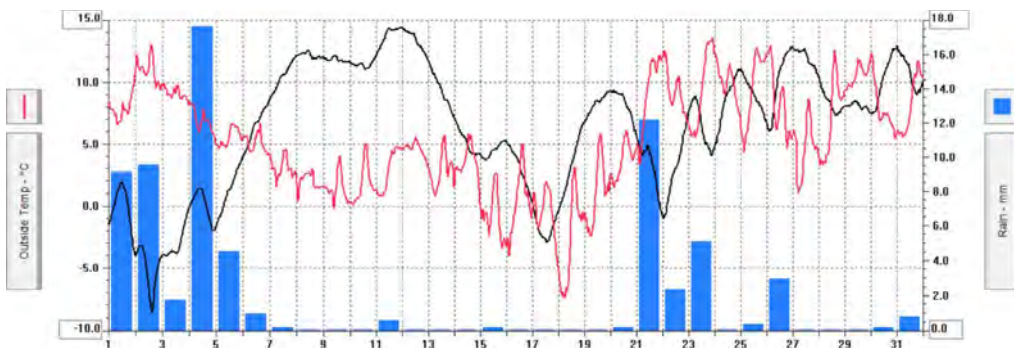
January was a month of contrasts with 3 named storms.

It started very wet with a drop in pressure to 974.1mb as Storm Henk approached. This quickly brought rain, high winds and some flooding, but was mild for this time of year. On the 4th, we had the wettest day with 17.6mm of rain. By the 7th, we were into fine weather. On the 17th, Storm Isha brought spells of more windy and colder weather but, for us, no rain. This lasted up until the 20th. On the 21st, as the temperatures rose, Storm Joselin brought rain and high winds again, this time reaching 48mph. On the 27th, it turned dry and temperatures remained mild for the rest of January. Rain was near average for the month. The highest temperature was 13.6°C on the 23rd, the lowest was -7.4°C on the 18th, although January was generally milder than normal with above average sunshine.

Barometer readings are shown by a black line in the plot below, which dips to reflect pressure dropping when Storms Henk, Isha and Joselin were approaching. Other dips in pressure were smaller, un-named storms.

	High	Date/Time	Low	Date/Time
Temperature:	13.6°C	23 Jan 22.00	-7.4°C	18 Jan 05.00
Mean Temperature	5.3°C			
Dewpoint:	11.9°C	23 Jan 22.00	-9.0°C	18 Jan 05.30
Humidity:	94%	21 Jan 07.00	57%	21 Jan 00.00
Barometer:	1038.2mb	11 Jan 20.30	974.1mb	2 Jan 15.00
Wind Speed	48 mph SSW	21 Jan 21.00	Months avg.	6.6mph
Wind Chill:	12.0°C	25 Jan 13.30	-9.7°C	18 Jan 06.00
Dominant Wind:	W			
Rainfall * T= total rain days and moisture. R= Actual rain				
* Rain Days: 17(T), 17(R)	Wettest Day 4 Jan		17.6 mm	0.693ins
Monthly Rain:	Total	January 2024	69.2 mm	2.742 ins
Yearly Rain:	Total	1 Month	69.2 mm	2.742 ins

January 2024 Temperatures, Rain and Storms



For weather data 24 hours a day, updated every 15mins, this site forecast and much more, visit: www.dagnallweather.co.uk and http://bit.ly/weather_dagnall. If anyone has a question, comment or wishes to contact me please email: david@dagnallweather.co.uk or telephone: 01442 843883. Dagnall weather now has an app for your iPad & iPhone! Just go to the apple store, search for Wunderstation and follow the instructions to Dagnall Weather Station. Now updated every minute.



Salvation Sound

Booth Place, Eaton Bray, LU6 2DR
01525 222087
eaton.bray@salvationarmy.org.uk



Words are Important

With a word we can encourage, help bring comfort, make a difference in someone's life, heal a broken friendship.

With a word we can discourage, ruin a reputation, do untold harm and cause unnecessary distress.

No matter who we are, everyday our words reflect who we are and influence everyone we may live with or how we may live.

Our words always make a difference.

I am reminded of an old prayer. May the words of my mouth and the meditation of my heart be acceptable in your sight, O'Lord, my strength and my redeemer.

Eddie Impey, who was our Bandmaster at the Salvation Army for nearly 50 years, lived and worked in Eaton Bray for much of his life. In the late 1930's as a teenager working for Wallace Nurseries, he recalled going to work one day to find his boss, Mr Wallace very unhappy indeed.

Mr Wallace had recently sold his car to the village mechanic, Lawrence "Lol" Piggott, who was now displaying the vehicle for sale in his tin garage on the High Street.

Mr Wallace sent Eddie round to the garage to tell Lol to "move his car". The request was ignored and Eddie was dispatched a second time to inform the garage owner that if he did not remove the car from public display he would send his "workmen" round and they would "get it shifted".

This seemed to have irritated Lol who promptly removed the car wheels and chained the rear axle to a lamppost.

Eddie was sent back a third time. "Lol, Mr Wallace says please will you move his car?"

"Of course" came the reply "you only had to ask".

The Salvation Army
Booth Place, Eaton Bray



Programme

Morning Worship	Sun 11am – 12pm
Coffee Morning (fortnightly)	Tues 10am – 12pm
Home League	Weds 2:30pm – 3:30pm
Champion's Club Age 5+ (term time only)	Weds 6:15pm – 7:15pm
Girls' Night Out (1 st Thurs of the month)	Thurs 7:30pm

For more information please call into the hall,
telephone: 01525 222087 or
contact us by email:
eaton.bray@salvationarmy.org.uk

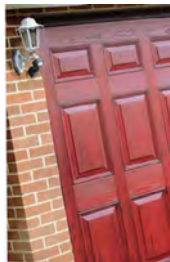


Premier Garage Doors & Gates



Quality Garage Doors

- ✓ Superb choice of designs in steel, timber and fibreglass
- ✓ Any size door made to your requirements
- ✓ Large selection of spares & fast repair service available
- ✓ New or existing doors converted to automatic
- ✓ Professionally fitted by own expert craftsmen
- ✓ Prompt free estimates & advice
- ✓ We cover all areas



(EST 1984)



Door & Hardware
Federation

raising standards



Unit 7, Sparrow Hall Farm, Leighton Road, Edlesborough LU6 2ES

01525 220212

www.premiergaragedoors.co.uk



JANES FLOORING



CARPET

VINYL

LAMINATE

WOOD FLOORING

At Janes Flooring we believe you should enjoy the experience of shopping for your new floor covering and to be given the correct advice and product information to help you make the right decision.

We love to help you choose the right products and colours to enhance your own interior design ideas and encourage you to borrow our samples and take them home to ensure you find the perfect match.

We offer a start-to-finish service and will look after you all the way, our additional services include uplift and disposal of your old flooring, helping with moving your furniture and appliances. You can even leave your key with us and let our fitters get on with the job!


10% OFF carpet & vinyl

Visit today and bring this advert with you or call 01525 220208.

- **FREE No obligation quotes.**
- **Borrow samples.**
- **Uplift & disposal service.**
- **Moving of furniture.**



Call or visit me,
Louise Janes, today.

 01525 220208

 4-6 High Street, Edlesborough, LU6 2HS.

BUY ONLINE!



www.janesltd.co.uk