



Focus

October
2021

The local village magazine just for Us!
Eaton Bray, Edlesborough, Northall & Dagnall
Focus is online at www.thefocusmagazine.co.uk

Smart[®] AUTOMOTIVE



EXPERTISE, QUALITY & EXPERIENCE
EST 2003

Car Bodyshop, Service Workshop & MOT Bay



MOT TESTING
FOR ALL MAKES & MODELS

4 WHEEL ALIGNMENT
& TYRE FITTING

SPECIALISTS IN COMPLETE
CLASSIC CAR RESTORATION

DEALER TRAINED TECHNICIANS

EXTENSIVE EXPERIENCE IN
PRESTIGE CAR PAINTWORK & REPAIR

ACCIDENT & VANDALISM DAMAGE

INSURANCE WORK UNDERTAKEN

MOBILE BODY REPAIRS
ALLOY WHEELS - DENTS - BUMPERS
CHIPS - SCRATCHES - SCUFFS

Fully equipped vans that come
to your home or office

FREE COLLECTION & DELIVERY
LOAN CARS AVAILABLE



01582 664772 www.smartautomotive.co

Smart Automotive, Units 17 & 18 Icknield Way Farm, Tring Road, Eaton Bray LU6 2JX

SMART AUTOMOTIVE IS THE TRADING NAME OF SMART TOUCH (MK) LIMITED

**The Salvation Army
Booth Place**



Sunday

Footprints (Sunday School) 9.45 - 10.45am
(Term time only)

Morning Worship 11am

Tuesday

Coffee Morning 10 - 11.30am
(Alternate weeks)

Wednesday

Home League 2.30 - 3.30pm
(Ladies meeting but all welcome)

Champion's Club (Term time only)
5.30-6.30pm (Ages 5 to Year 5)
6.45-7.45pm (Year 6 and above)

Thursday

Girls' Night Out
(1st Thursday of the month) 7.45pm

Ladies Fellowship
(Last Thursday of the month) 7.30pm

**For further details please contact us on
01525 222087 or email
eaton.bray@salvationarmy.org.uk**

**NORTHALL BAPTIST
CHAPEL**

Chapel Lane, Northall

(just beyond the 30 speed limit signs on
the road towards Leighton Buzzard)

Everyone is welcome to our Sunday
worship each week between 11am and
12.30pm including tea/coffee and time to
talk together.

For more information contact:
John Hazell 01525 218142

Email northallchapel@btinternet.com

Web: www.northallbaptistchurch.org

There has been a Baptist Chapel in Northall
for more than 200 years. Today we continue
to seek to worship God, serve him in our
daily lives and support and encourage one
another in the difficult and the joyful times.

**The Focus Magazine
Committee**

Editor: Sally Siddons 01525 221733

34 Wallace Drive, Eaton Bray

Email: sallysid@hotmail.com

Business Advertising: Sally Taylor, Butler's
Folly, South End Lane, Northall LU6 2EX
01525 221576 & Angela Dunford 221944

Email advertising@thefocusmagazine.co.uk

Chair: Ken Coates

10 The Nurseries, Eaton Bray 220868

Circulation Manager: Angela Dunford
1 Knolls View, Leighton Road, Northall
01525 221944, angela.dunford29@gmail.com

Treasurer: Steve Dunford, 01525 221944

PCC: Sue Tucker

Design and Layout: Tracey Moren
(Moren Associates Limited) 01525 229695

Printed by: Priory Press
Dunstable 01582 699851

Copy for publication to the Editor by the
10th of the month

*Focus accepts no responsibility as to the
accuracy or content of any advertising or articles
published in 'this' magazine, neither do they
reflect the opinion of members of the Committee.*

*© Articles published in Focus may not be
reproduced without permission.*

**Focus would like to remind
contributors that the deadline
for articles is the 10th of the
preceding month**

Kindly Note

*If the event you wish to advertise falls in the first
week of the month, it is advisable to get the details
into Focus a month earlier. The magazines are
not delivered from the printers until the first of the
month, therefore it takes a few days for them all to
be circulated throughout the village.*

≠ Editor

Focus is online at www.thefocusmagazine.co.uk

Village Diary



Weekly

- Mon-Sun St. Mary's Edlesborough is open most days 10am-4pm, sometimes longer.
Look for the OPEN sign below the notice board
- Mon-Fri (term) Eaton Bray Pre-school, Eaton Bray Lower School, 01525 220468, admin@eba.ec
- Mon-Fri (term) Dagnall Under 5's, Dagnall Village Hall, 9.15am - 12.15pm, Mrs Ann Tobin 07816 358342
- Mon-Fri (term) Edlesborough Primary Academy Pre-School, 01525 220431, epamanager@epa-primary.org
- Mon-Fri (term) Tottemhoe Pre-school, Tottemhoe CE Academy, 01582 662959, tottemhoeoffice@tot.dsamat.co.uk
- Mondays Pilates, 10.45am, Tottemhoe Memorial Hall, Lisa: 07832 230774
- Mondays Dagnall Community Choir, All Saints Church 7.45-9.45pm, w:dagnall-community-choir.co.uk
- Mondays (term) Movement and exercise classes with a dance flavour, Northall Village hall 2-3.30. Contact Jan 01442 864271.
- Mondays Curtain Call Youth Theatre 5-7.30pm, Eaton Bray Village Hall, Gavyn 01525 220525
- Mondays Curtain Call Theatre Group - 7:30-10:30pm Eaton Bray Village Hall, Sheila - sdtwinkletoes@yahoo.co.uk
- Mondays KFFPA ISTD ballet classes, Edlesborough Memorial Hall 4pm-6.30pm (4years+)
Contact Kiri 07988161043 or visit Facebook page 'KF PerformingArts/KFFPA' for info
- Mondays Cubs (8-10½ years old), 6.30pm - 8pm, 1st Eaton Bray & Edlesborough Scout Hut, High Street, Edlesborough. Contact Liz Coates 01442 842550
- Mondays Yoga, 6:45pm, Edlesborough Memorial Hall, contact 07837 727302
- Mondays Barre, 8pm, Edlesborough Memorial Hall, contact 07837 727302
- Mondays Zumba Gold, 4:45pm, Eaton Bray Village Hall, contact Carolyn on c.syme26@gmail.com
- Tuesdays Pilates, 10-11am, Eaton Bray Village Hall, Nicky Roussou 07861 162680
- Tuesdays Tottemhoe Baby & Toddler Group, 9.30-11.15am, St. Giles Church Hall, Ruth Allen, 01525 222468 or 07796 265174 or email ruthallen002@gmail.com
- Tuesdays Tap & Ballet Classes, JoAnn Latus School of Dance, 4-8pm, Eaton Bray Village Hall, 07800 518654
- Tuesdays Coffee Morning, Bring & Buy, Table Top Sale, 10-11:30am, Salvation Army Hall, Booth Place, Eaton Bray
- Fortnightly
- Tuesdays Keep Fit class, Edlesborough Memorial Hall 11 - 12noon
- Wednesdays Pilates, 8pm, Northall Village Hall, Lisa: 07832 230774
- Wednesdays Northall & District Age Concern Wednesday Club, 10am - 3pm, Northall Village Hall, Contact Anna on 07854 230243
- Wednesdays Art Course online 9.30 -11.30 am, contact Loma Moore 07896 619660
- Wednesdays Art Course, Bellows Mill Eaton Bray, 2-4.30pm, contact Loma Moore 07896 619660
- Thursdays Jazzercise, 9.30-10.30am, Eaton Bray Village Hall, Angela Veryard, 01525 715208
- Thursdays KFFPA Street dance classes, Edlesborough Memorial Hall 4.15pm-6.30pm (4 years+)
Contact Kiri 07988161043 or visit Facebook page 'KF PerformingArts/ KFFPA' for info
- Thursdays Tae Kwon-do, Dagnall Village Hall, 5.45-7.30pm 07813 755785
- Thursdays Beavers (6 to 8 years old), 6.15-7.30pm, 1st Eaton Bray & Edlesborough Scout Hut, High Street, Edlesborough. Contact: ebebeaverleader@ebescouts.co.uk
- Thursdays Explorers Scouts (14-18 years old), 8pm-9.30pm, 1st Eaton Bray & Edlesborough Scout Hut, High Street, Edlesborough. Contact Simon Betts, simon_betts@hotmail.com.
- Thursdays Eaton Bray Methodist Church Social Afternoons, 2 - 4pm, All Welcome
- Thursdays Retro Line Dance Class. 11.15am to 12.45pm. Eaton Bray Village Hall. Beginners welcome.
www.jukeboxjunction.co.uk info@jukeboxjunction.co.uk 07864212171
- Fridays Tap & Ballet Classes, JoAnn Latus School of Dance, 4-8pm, Eaton Bray Village Hall, 07800 518654
- Fridays Stay & Play toddler group, 'Musical Monkeys' at the Eaton Bray Village Hall, 10-11.30am, £4.50 for one adult and child, £1 for extra children/adults, 0-6 months free
- Fridays Scouts, (10½ to 14 years old), 7.00-8.30pm, 1st Eaton Bray & Edlesborough Scout Hut, High Street, Edlesborough. Contact Mark Owen, ebescoutleader@ebescouts.co.uk, 07899 892344

Village Diary

- Fridays (term) "Little Luvvies" baby ballet classes, 10am-11.30am, Northall Village Hall. Contact Emma Whittemore on 01525 376124
- Saturdays Jazzercise, 9.30-10.30am, Eaton Bray Village Hall, Angela Veryard, 01525 715208
- Saturdays KFPA Musical theatre classes, Edlesborough Memorial Hall 9.30-10.30am (4years+) Contact Kiri 07988161043 or visit Facebook page 'KF PerformingArts/ KFPA' for info
- Sundays Sunday Worship at 11am, Edlesborough Baptist Church, Moor End, LU6 2FL. Contact: 01525 222064 or edlesboroughbaptistchurch@gmail.com
- Sundays Yoga, 9:30am-10:30am, Edlesborough Memorial Hall, contact eleanorlangton@outlook.com or 07969315384
- Sundays Karate for kids & adults, 2:30-4pm & 4:30-6pm, Eaton Bray Village Hall, Contact 07500 007779

Monthly

- 1st Monday Eaton Bray Parish Council Meeting, 7.30pm, The Coffee Tavern (except Jan-2nd Monday)
- 1st Monday Eaton Bray W.I. Meeting, 7.30pm. Eaton Bray Methodist Church Hall. Contact Margaret Jones on 01525 220991
- 1st & 3rd Mon (ex. Bank Hols) Knit 'n Stitch at Edlesborough Village Hall, 1:45pm to 3:45pm. Contact Heather Westwood (01525 839083)
- 1st & 3rd Tues Dunstable & District Orbit (social and charitable) Club meet at Dunstable Rugby Club at 8pm. For details contact 01525 222441 or 01582 755147
- 1st Saturday St. Mary's Church, Eaton Bray Coffee Morning & Plant Sale, 10:30am - 12 noon
- 2nd Monday Film Society, Sep to May, 2pm, Eaton Bray Village Hall, Graham Chappell 01525 220883
- 2nd Tuesday Dunstable & District Local History Society meeting, 7.45pm, Methodist Church Hall, Dunstable (opposite Wilkinson)
- 2nd Tuesday Edlesborough W.I. Meeting, 7.30 pm, Edlesborough Memorial Hall. Contact Sue Bingham on 01525 222522
- 2nd Wednesday St. Mary's Ladies Guild, 2pm, St. Mary's, Eaton Bray
- 2nd Wednesday Eaton Bray & Edlesborough Lions Club, 7.30pm, The Coffee Tavern
- 2nd Saturday Workshops Dynamic Yoga 9.30-11am £10 Eaton Bray Coffee Tavern, Keira 07936 693696
- 2nd Saturday Cafe Community, 11am-1pm, Eaton Bray Methodist Church,, October to May only
- 3rd Thursday Edlesborough Parish Council Meeting, 7.30pm, Memorial Hall
- 2nd Friday Leukaemia Research Coffee Morning 2, Dunstable Road, Dagnall 10.30 a.m. all welcome. No meeting in September, June plant bring and buy, December Sherry & mince pies
- 3rd Sunday Lunch club 11.30 to 2.00pm, Eaton Bray Village Hall, Chris Hewitt 222288
- Last Saturday Coffee Morning, 10:00-12 noon, Edlesborough Methodist Church
- This Month's One Off/Annual/Irregular Events**
- 22nd Oct Macmillan Charity Quiz Night, 7pm, Leighton Buzzard Rugby Club, £10 01525 371322

Please get in touch with the relevant organisation to check if sessions are running

Focus Diary

Focus would advise all clubs, committees etc. to check the diary at the front of the magazine as unless we are advised to the contrary, we do not know which entries are still current.

Cover photo: A pumpkin display at the Royal Horticultural Society's garden at Wisley by Angela Dunford

British Legion Remembrance Service.

Sunday 14th November 2021

Edlesborough War Memorial 10.45am

Advance Warning! Please Take Note!

CLOSURE OF B440 (MAIN ROAD) FROM NORTHALL TO COCK'S CLOSE (PEBBLEMOOR) JUNCTION AND HIGH STREET EDLESBOROUGH, FROM PEBBLEMOOR TO JUNCTION WITH MAIN ROAD.



This year's annual Service of Remembrance will take place at Edlesborough War Memorial at the top of the hill by Edlesborough Church on the Main Road on Sunday 14th November starting at approximately 10.45am. In recent years when the Service has been held here, there have been 200-300 people standing in the road around the memorial.

The B440 main road will therefore be closed to traffic for the duration of the service from **10.30am until 11.30am** with a diversion for traffic in place from the junction of the B440 main road at Cock's Close towards Pebblemoor, along Pebblemoor and Edlesborough High Street, along Eaton Bray High Street and up Northall Road to join the B440 main road in Northall. Edlesborough High Street will also be closed from the junction with Pebblemoor by the Memorial Hall to the junction with the B440 main road. There will be manned barriers in place closing the roads at junctions and diversion signs in place.

Residents living on Edlesborough High Street above the Memorial Hall and along the closed part of the main road should be aware that it will **NOT BE POSSIBLE** to access the main road by car at the junction by the Church during the hour of closure. If it is really necessary to use your car at this time, **please drive away from the junction** towards the nearest point on the diversion route and be aware that you will have to pass through the barrier closing the road and will need to stop while the barrier is moved by the official marshals. These people are volunteers who will be giving up their time to help protect the people attending the service and should be treated with courtesy and respect.

Notices advising residents living locally about the road closure will be placed at the closure points for three weeks prior to the closure to make sure that everyone knows about it and can plan to avoid using their car during the hour of closure.

Village Info



EDaN Community Transport
Peter Williams: 01442 842506

Village Hall Booking Contacts

Northall: Lorna Cabbage Tel: 07857 318696 www.edlesborough-pc.gov.uk/nvh

Email: northallvhbookings@gmail.com

Eaton Bray: Norman Lee Tel: 07975 797202

Email: bookings@ebvh.co.uk Website www.ebvh.co.uk

Dagnall: Bev Way 07875 462128 & Trish Owen 07762 151364

Email DVH_Bookings@outlook.com

Edlesborough Memorial Hall: Penny Pataky, Tel: 01525 229358

Email: manager@edlesborough-pc.gov.uk

Police Contact Numbers...

making neighbourhoods safer together

General Assistance (Recommended Number): 101 Emergency: 999

Bedfordshire Police (Eaton Bray)

Leighton Buzzard Police Station/Kathryn Horgan: 01582 473411

Typetalk: 18001 01582 473418

Email: LPT.LeightonBuzzardLinslade&Rural@bedfordshire.pnn.police.uk

Thames Valley Police (Edlesborough, Dagnall & Northall)

PCSO Jackie Dodson

Email: greatbrickhillwingivinghoenhpt@thamesvalley.pnn.police.uk

Defibrillator Locations

These units are registered with the Ambulance Services. To access them, please phone 999. You will be given the access code and the location of the unit will be confirmed. The defibrillator is easy and safe to use. The units can be found on the outside walls of the following locations:



Dagnall: Red Lion Public House & Munns Farm Shop

Eaton Bray: The Coffee Tavern

Northall: The Swan Public House

Edlesborough: Edlesborough Memorial Hall & Baptist Church, Summerleys



Helpline: 07930987064

Manned phone hours:

9am to 5pm, Monday to Friday

(An answering service is available for out-of-hours calls)

Call us if you want help with getting to the surgery/hospital, collecting prescriptions, minor errands or d-i-y jobs, form-filling, walking your pet, on-line shopping support etc. or if you would welcome our befriending service.

We help people of Eaton Bray and adjacent villages

Eaton Bray with Edlesborough Parish News

Vicar: Rev'd Joy Cousins

The Vicarage, 11 High Street, Eaton Bray - Tel: 01525 220261

Associate Priest: Rev'd Stephen Burge

Church Warden & Pastoral Matters: Catherine Hayden (01525 220527)

Reader: Gordon Gray (01525 220136)

Website: www.stmaryseatonbray.org.uk Facebook: St Mary's Eaton Bray

On Sunday 3rd October St Mary's church celebrates Harvest Festival. This is set in the context of the Season of Creation which runs from 1 September to 4 October. The Anglican church, which we are part of, has 5 'Marks of Mission'. The fifth mark is 'To safeguard the integrity of creation, and to sustain and renew the life of the earth'. At St Mary's we have been praying for the earth and particularly for the United Nations Climate Change conference COP26 which will be held in Glasgow from 31st October to 12th November. The summit will bring together heads of state, climate experts and campaigners to agree coordinated action to tackle climate change. The UN secretary General Antonio Guterres says that the earth is on 'Red Alert'. 'The major emitters must step up with much more ambitious emissions targets' he says if we to limit climate change to 1.5C. Do such summits make a difference? There is evidence that they do.

On 16 September 1987 the Montreal Protocol was signed by 197 countries. It was the first treaty in the history of the United Nations to achieve universal ratification. The Protocol was designed to protect the ozone layer by phasing out the production of nearly 100 man-made chemicals that are responsible for ozone depletion. The most well known of these are Chlorofluorocarbons (CFCs). In August this year, new research has revealed just how critical the Montreal Protocol was. A team of international scientists from the UK, US and New Zealand found that if CFCs had not been banned in the late 1980's, their continued use would have contributed to average global air temperatures rising by an additional 2.5C by the end of the century. That 2.5C would have been in addition to the rises we already have. The concerted international response averted 'a scorched Earth scenario' according to the research team.

In addition to international agreements, we can all play our individual part in finding ways to reduce, reuse and recycle. And we can pray. As Christians, we believe in the power of prayer to change things. Please join us in praying for COP26, for the delegates and their decisions. Here is a prayer by Canon John Payne-Cook who preached on climate change at the service at St Mary's on 5th September. You can find his sermon on our You Tube channel.

Prayer for the COP26 Climate change conference- Canon John Payne-Cook.

Creator, Redeemer and Sustainer of this world, we thank you for the wonder, the beauty but also for the fragility of the life you have given us. Help us to be aware of the grave dangers we face through our dependence upon fossil fuels for our energy, our industry and our comfort.

We pray for the leaders of all nations as they prepare to meet in Glasgow that you will inspire them to listen to, and to learn from what the scientists are saying, to plan binding resolutions to radically reduce carbon emissions here and in every country.

We pray too for all who are seeking new ways to shrink the carbon footprint of humanity, those researching new green technology, hydrogen power, carbon capture and whatever will enable future generations to live free from the fear of environmental catastrophe, through Jesus Christ our Lord. Amen.

☞ Revd Joy Cousans, Vicar of Eaton Bray with Edlesborough



Services at St Mary's Church

SUNDAYS : 10.00am PARISH HOLY COMMUNION

On Third Sunday of each month:

8.00am HOLY COMMUNION

10.00am WORSHIP FOR EVERYONE a shorter, less formal service.

WEEK-DAYS: Wednesday: 10.00am Holy Communion

EVERYONE WELCOME AT THESE SERVICES.

WE ENCOURAGE PEOPLE TO WEAR A FACE COVERING

DETAILS AND ONLINE WORSHIP: www.stmaryseatonbray.org.uk

Dagnall Church Services

The All Saint's Dagnall Sunday service is at 10.30am on the 3rd Sunday of each month.

All welcome.

We encourage people to wear a face covering.

Any queries please contact Phillip Lee on 07977234453.

Dagnall Church, Ringshall Road HP4 1RL



In light of the current Coronavirus situation the Pastoral Care Team at St. Mary's, Eaton Bray welcomes your assistance in identifying any of our parishioners who might be sick or otherwise benefit from their support during this challenging time. Please contact us at admin@stmaryseatonbray.org.uk in this regard.

Alison White Memorial Fund for Leukaemia Research

Until March 2020, coffee mornings had been held on the second Friday of every month since 1982. The amount raised through these events so far is £19,765. Covid permitting, coffee mornings will resume from Friday 8th October 10.30 a.m. at 2, Dunstable Road, Dagnall. It would be great if we were to reach £20,000 during 2022! Look forward very much to welcoming old friends and new!



UNICORN WINDOWS LTD

UNIT 3 YOUNGS INDUSTRIAL ESTATE
STANBRIDGE ROAD, LEIGHTON BUZZARD
BEDS LU7 4QB

YOUR LOCAL HOME IMPROVERS







✓ DOORS; COMPOSITE, ALI AND UPVC	✓ WINDOWS; UPVC AND ALUMINIUM
✓ CONSERVATORIES	✓ SOLID ROOF / ROOF CONVERSIONS
✓ ORANGARIES AND GLAZED EXTENSIONS	✓ CONSERVATORY REFURBISHMENTS
✓ CAT FLAPS/DOG FLAPS	✓ SOFFITS, FASCIAS AND GUTTERING
✓ BI-FOLD DOORS	✓ LANTERN ROOFS AND SKYPODS
✓ PORCHES	✓ FLUSH SASH WINDOWS
✓ CLADDING	✓ SLIDING DOORS
✓ REPAIRS - INCLUDING REPLACEMENT GLASS	✓ AND MORE..

CONTACT US
FOR MORE INFO OR TO ARRANGE YOUR FREE, NO OBLIGATION QUOTE
01525 854272
sales@unicornwindows.co.uk


origin   



ALLOTMENT RENTS

Payment due by 11th October 2021

Rents Due: £2:10 per pole



Edlesborough Parish Council requests that allotment rents are paid by Internet Banking.

At the start of September all tenants will be sent an email or letter advising them of the payment information.

Should any tenant not receive a letter about the rent collection arrangements please contact the Clerk as a matter of urgency.

In order for the Parish Council to save on administration expenses it would be very much appreciated if tenants could [please ensure rent is paid by 11th October 2021](#), late payments will incur a £10 administration fee.

Anyone wishing to take on an allotment should contact the Clerk who can advise them of plot availability or add them to the waiting list.

Clerk to Edlesborough Parish Council 01525 229358 or clerk@edlesborough-pc.gov.uk



EcoTech Oven & Carpet Cleaning



- Non franchise family run business
- Eco-friendly Oven & Carpet cleaning
- Fully trained & insured technicians



OVEN CLEANING FROM £45
CARPET & UPHOLSTERY FROM £60

Call for a free quotation



01525 221922



www.ecotechovenandcarpetcleaning.co.uk

Find us on



Checkatrade.com
Where reputation matters



Moren Associates
Technology Services

Technology Support for Home and Business

Onsite or Remote Support

PCs, Smartphones, Tablets, Printers

Broadband, Internet, WiFi, Email

Security Guidance

Virus Protection & Removal

Upgrades & Installations

Data and System Recovery

Hardware & Software Troubleshooting

Home & Office Network Setup & Support



01525 229695 or 07950 597962
support@morenassociates.co.uk

Free initial consultation

Problem Solving:

Virus & Spyware Removal
Internet & Email Assistance
Fault Diagnostics
Repairs & Upgrades
Slow Running PC's

Services:

PC & Mac Support
Wired & Wireless Networks
Data Recovery
Install & Set-up
Health Checks

On-site Visits:

Office Hours &
Evenings - by appointment

Sales:

Desktops, Laptops & Tablets
Printers & Peripherals
Software

For friendly advice call John Wallace

07968 536068 or 01525 261381

Email: john@computamation.co.uk

Web: www.computamation.co.uk

9a Lower Way, Great Brickhill, Buckinghamshire. MK17 9AG

**Computamation
Services Ltd
Established. 1999**

"Excellent experience. I nearly fell asleep whilst having my fillings done! Very reassuring - no rush. I was made to feel completely at ease. Thank you!"
- R.R



Edlesborough Dental Practice



floss and smile
gentle dentistry



"Without doubt the most competent, gentle & lovely dentist in the Northern hemisphere! I won't see anyone else. Thank you from a nervous patient."
- M.B.

Edlesborough Dental Practice

Telephone: 01525 223175

11 Cow Lane, Edlesborough, LU62HT

www.flossandsmile.co.uk

Get the Beautiful Smile You Deserve!

EMERGENCY TEXT TO : 07590035899



The Clear Alternative to Braces



Implants

General Family Dentistry *Crowns *Bridges *Dentures *Smile Makeovers

*Tooth Whitening *Tooth straightening *Implants *Botox

*Hygienist *Sedation *0% Finance



Dentist :
Dr A. Johar
GDC number : 111350

Hygienist:
Mrs Jane Shrowder
GDC number : 2344



For all your painting & decorating requirements
 Domestic and Commercial
 call Max for a free estimate with no obligation
maxbro@btinternet.com

Do you want clean carpets?

We are still operating during these uncertain times. Please call for details.

- Simply the **BEST** cleaning you can get
- The most modern, up-to-date equipment
- Local owner operator - 90% of my work is recommendation or repeat business
- Your upholstery and carpets won't be left wet, only damp after it has been cleaned
- 100% safe chemicals – no 'sticky' after feel
- **FREE SURVEY & QUOTE**

Please contact Darren Batchelor on:

Tel: 01525 851 811

or Mobile: 07790 034 818

email: sales@deep-cleaners.co.uk

www.deep-cleaners.co.uk

A member of Proclean, The Professional Cleaners Organisation

N.D.S.

General Building and Plumbing

Extensions: Patios: Fencing: Roofing:

Property Maintenance

Kitchens and bathrooms designed,
 Supplied and Installed.

Guttering Supplied and Fitted

Can also replace steamed up/misty

Double Glazing

Please call Neil Scott:-

07946 626 564 / 01525 221470

For Free Estimate. All work considered

No job too small

(30 Years Experience)

Working in conjunction with
 Prestige Kitchens of Dunstable



Dominic Woolcott

Painter & Decorator



- Internal & External
- Plastering & Coving
- Insurance Work
- 20 Years Experience
- Competitive Rates

**For a professional job call:
01525 229682 or 07747 042879**



STRUCTURAL ENGINEERING | ARCHITECTURAL SERVICES

Comprehensive design service for Building and Construction

- Architectural & Structural Designs
- Extensions • Alterations • Loft Conversions • Defects and Repairs
- Planning Permission • Building Regulation Consents • Listed Building Consents

Village Based | Established 33 years
01525 222462 | 07845 950594 | Also in Tring

P. DYER ELECTRICAL

For all your Electrical & Testing & Inspection needs

- All Testing & Inspection
- Rewires
- Security Systems/Lighting
- LED & Low Energy Lighting
- CCTV Systems
- PAT Testing
- Fuse Boards
- Fault Finding/Repairs

Fully insured, Part P registered, all work guaranteed. Fast, friendly and reliable local electrician. For a free, no-obligation estimate, call Paul on:



Tel: 01525 222109

Mobile: 07850 682815

www.pdyerelectrical.co.uk



Lee Hutt Heating & Plumbing Services
25 YEARS

Bathrooms
DESIGN & INSTALLATION
TILING
HEATING
TAPS
Leaks
CALL OUTS
Free Estimates

01525 222145 07971 559185

Barry Cato Motor Repairs

Est. 1981

Servicing, repairs and MOT's arranged

Workshop at:

r/o Norfolk House Farm, Harling Road
Eaton Bray, Dunstable, Beds, LU6 1QY

Tel: 01525 221681 (workshop)

07836 650015 (mobile)

David John Harris



Green Fingers



(Established 1992)

All Fencing Work • All Gates • Paving • Patios
Driveways • Shingle • Hedge Setting and Cutting
Grass Cutting • Turfing Specialist • Exterior
Painting Service • Sheds Small Building Work
Trees & Shrubs Supplied

Tel/Fax: 01525 221745

Mobile: 07889 143713



Steve the Mower Man

Steve Johns
 All mowers and garden machinery
 repaired and serviced
 Collection and delivery available
07720 828166

Will Kimberley
Garden Services
01442 255784

Phone for a free no obligation written estimate
wkgardenservices@btconnect.com

- High hedges a speciality
- Fences erected and repaired
- General garden tidy up's
- In fact any job in the garden!

GRASS ROOTS
GARDEN MAINTENANCE

TREE SURGERY, HEDGE PRUNING,
 SELECTION SUPPLY AND PLANTING OF
 TREES, SHRUBS AND HEDGES.
 REGULAR MAINTENANCE/ONE-OFF JOBS
 (Fully Insured)
Brian McMahon NCH (Arb)
01525 221960

S M Reilly & Son Ltd
General Builders & Contractors
 Turning Your House into
 a Home Since 1987



All aspects of the building trade undertaken

- *Extensions*Hard Landscaping*
- *Windows, Doors & Conservatories*
- *Fitting of Aluminium Bi-fold Doors*
- *Kitchen & Bathrooms*Drives*
- *Loft Conversions*

01525 221740 07970 637511

Flicks & Bangs
 HAIR SALON

A warm, friendly salon offering a wide range of bespoke hair services for all the family. Feel free to pop in for a complimentary consultation.

www.flicksandbangs.com

Flicks & Bangs
 66 High Street
 Eaton Bray
 Nr. Dunstable
 Beds LU6 2DP
01525 221252

Opening Hours

Mon	Closed
Tue	9 am - 5 pm
Wed	9 am - 5 pm
Thu	9 am - 8 pm
Fri	9 am - 6 pm
Sat	8 am - 4 pm
Sun	Closed



01525
851080

.CO.UK

07973
167779

SIGNS
VEHICLE SIGNS
BOARDS & BANNERS
STICKERS
BUSINESS CARDS
PRINTED & EMBROIDERED
CLOTHING

12 HARMILL IND EST LEIGHTON BUZZARD LU74FF

!AMAZING New Website!
www.pinstripes1995.co.uk

Join us on Facebook – **PINSTripES 1995**

WASHING MACHINE REPAIRS

ALSO
DISHWASHERS, TUMBLE DRIERS,
AND ELECTRIC COOKERS



Call
ANDERSON D.R.S.

01582 665764

www.andersondrs.co.uk
SALES AND RENTALS AVAILABLE

Established over 20 Years

DUNCAN TOMBLIN **TREE SURGEON**

Forestry Contractor • Tree Felling
Crown Reduction & Thinnings
Deadwooding • Hedge Cutting
Stump Grinding • Site Clearance
Private Agriculture Fencing Contractor
Chipper & Stump Grinding Hire
Digger Hire

FULL PUBLIC LIABILITY INSURANCE
FREE ESTIMATES

'The Best Choice For Your Tree'

TEL: (01525) 221946
MOBILE: (07802) 410728

12 Greenways, Eaton Bray, Beds



Patricia's Cuisine

Catering For All Occasions

- Buffets, Dinners •
- Christenings, Weddings, Funerals •
- Promotions & Business Lunches •

For Enquiries & Menu

Meadside Farm, 104 High Street,
Eaton Bray, Bedfordshire, LU6 2DP

Telephone: 01525 222174
www.patriciascuisine.co.uk



Anne Johnson Osteopath
6 Moor End, Eaton Bray

Back, neck and joint pain
Postural tension and headaches
Arthritic and other muscle and joint problems

01525 221958 / 07957 250682

Book by phone or online

www.anne-johnson.net



Eaton Bray Academy

Visit our school website to find out more about us, watch our virtual school tour or arrange a socially distanced visit.

We have availability for pupils from the term after they turn two to Year 6.

Tel: 01525 220468

Email: admin@eba.ec

www.eatonbrayacademy.co.uk



When the Sam Kelly Trio closed our 2019 show with a fantastic performance of a Dire Straits classic, little did he or we know.....

Well, we're back. At their last Committee Meeting, the Friends of the Church on the Hill unanimously agreed that they should start planning for EdleFest2020 in 2022. The dates will be Friday June 10th and Saturday 11th, with performances in the evening.

Initially tickets will be sold through our agency, Ticket Source, or you can reserve tickets through wyn.johns@gmail.com. Subject to prevailing conditions, Louise has agreed to sell tickets, probably from April 2022.

When it was clear that 2020 was a no show, we rolled over the Artists' contracts, and did the same this year. We are aware that there have been some changes in line-ups but will now be contacting the agents to confirm bookings.

We are very excited to be back, remembering some wonderful nights on the Hill, and we know that our supporters are keen to get their dancing shoes on again. I have already had quite a few enquiries.

Follow our progress on Friends of the Church on the Hill Edlesborough and edlesboroughchurch.org.uk

2021 POPPY PROM

7.30pm SATURDAY 13 NOVEMBER

St Mary's Church, Eaton Bray

It is now 10 years since the first Poppy Prom in 2011 and the annual event has become one of the most popular of the *Music@St Mary's* concerts. As in previous years the concert will be featuring the South Beds Concert Band, Dagnall Community Choir and a talented soloist – this year, Linda Watkins.

The format of the evening will be familiar - music appropriate to 'The Royal British Legion Festival of Remembrance' in Act 1 followed by our version of 'The Last Night of the Proms'.

This year, of course, we must take account of Covid - the following steps will be taken to keep everyone safe:

- Revised seating plan. The capacity has been reduced by 1/3rd
- All those attending to have received a double vaccine and to bring their vaccine card as evidence.
- The church will be well ventilated.
- Please bring, and use, a face mask.
- Access to Eaton Bray Village Hall toilets.

We hope these changes won't adversely affect your enjoyment of the evening. Demand for tickets is likely to be high, so we recommend you purchase your tickets as early as possible. (Tickets, priced £12.50, from the Box Office (01525 222283).



The Eaton Bray Good Neighbours scheme continues to flourish and the volunteers have been busy continuing to help people in the village during the Summer. In the last quarter, some 48 residents have contacted us for various help. A total of 68 local people were helped with health transport including taking patients to a doctor's surgery and giving lifts to hospitals; this included 30 people who were helped with a lift to have their vaccination. 26 of our volunteers undertook tasks in the last quarter, and we are very grateful for their dedication and effort.

Good Neighbours 'In Touch' has proved a good way of keeping in contact with those who live on their own, or would like a regular telephone call. Many kind volunteers have come forward to help with a phone call.

A group of dedicated volunteers look after the Good Neighbours phone each day. This is an excellent team who regularly take the calls and arrange any tasks which are requested.

We hope to commence social activities during the Autumn.

Eaton Bray Good Neighbours AGM will be held on Wednesday 13th October at 7 pm at a venue to be advised.

**Do you need a lift to doctors, dentists, or Hospital?
Or do you need help with shopping or errands to local shops?
Would you like a befriender to give you a call now and then?**

**There is a small charge for car journeys.
If you need any help, please call us on: 07930987064
when a friend will answer your call.**

Having Eaton Bray Good Neighbours here to help gives some of our villagers a warm feeling of support. Equally the volunteers appreciate the joy of helping someone who needs you.

Dagnall and Kensworth Friendship Group

Last year was our 50th anniversary of the start of Dagnall Over Sixties group!

Unfortunately we were unable to celebrate because of Covid 19 and the lockdown.

This year 2021 we have planned a celebration lunch on October 26th at 1.30pm in Dagnall Village Hall. We will send invitations to everyone who has been a member or who has helped us over the years.

Sadly I will be stepping down as Chairman, after 10 years in the job!

Kensworth joined us in 2017/18 and boosted our numbers, so we could afford coach trips to various places. We have also enjoyed a few days away thanks to Roy Castledine who organised them. Roy had been chairman for many years and the club had grown under his care.

We will hold an AGM before the lunch to hopefully find a chairman and a committee. If we have no success we will have to close the club. If anyone reading this and would like to become involved please phone me 01442843202.

✍️ Rosemary Holt



Open mornings for Reception September 2022

Edlesborough Primary Academy is delighted to be able to invite prospective parents, whose child is due to start school in September 2022, in to the school for an informal tour of our setting.

Open mornings will take place on:

Monday 11th October – 9:00am – 10:30am

Monday 8th November – 9:00 – 10:30am

Monday 10th January – 9:00am – 10:00am

As part of the tour, you will see classes being taught from Reception through to Year 6, meet our Reception team and see our extensive outdoor learning environment.

If you would like to come and visit on one of our open mornings, please contact the school office on (01525) 220431 or via email on epamanager@epa-primary.org. to book a time slot.



Dagnall Church of England School News

Full Primary with Nursery

We are excited that from September 2022, Dagnall C of E school will be a full primary school, with a Nursery.

We offer small classes, a fabulously varied curriculum, breakfast and after school clubs, plus much more!

We will strive to help your child progress while having fun! Contact us on: 01442 842473 for a tour of our school

Public speaking success

Our KS2 pupils recently took part in public speaking classes and achieved a prestigious qualification, LAMDA level 1. Fantastic effort!

These 7 amazing pupils achieved the top grade of distinction. We are really proud of them all.



Edlesborough Pavilion

What a difference a year makes!

At the time of writing this report the completion of Edlesborough Pavilion is imminent though delays in critical supplies are still causing problems. Parishioners have commenced registering for membership of the ECSC and the building is looking very inviting. More information about membership of the ECSC can be found at <https://escomembers.azurewebsites.net/> Once the Pavilion is open EPC will deliver an informative leaflet to all homes in the Parish about the project.



Edlesborough Pavilion in September 2020



Edlesborough Pavilion in September 2021

Edlesborough Green

Edlesborough Green is now being widely used by parishioners for dog walks, exercise, and carefully coordinated sports activities.

EPC reminds all parishioners to:

- **Keep dogs under control. If your dog does not have excellent recall it must be kept on lead** to ensure that it does not spoil the enjoyment of Edlesborough Green for other users.
- Use the litter bins provided or preferably take all rubbish and recycling home.

EDaN Community Car Share Scheme

This is a group of local volunteers who support parishioners with journeys to hospital etc. The group has been inactive due to Covid-19. It is hoped to resume the full service early in October. The group is in need of more volunteer drivers.

Any parishioner interested in volunteering should contact the co-ordinator Peter Williams via email at peterw500@aol.com or on 01442 842506.

EDaN Beautification Team

The EDaN Beautification Team have been working hard tending to the various planters in the villages of Edlesborough, Dagnall and Northall which are all looking lovely.



Do you enjoy gardening and have some time to spare?

The EDaN Beautification Team is running low of volunteers for the tidying and watering of these planters. Anyone interested in getting involved or helping out with the watering should contact Mrs Christine Yates on 01525 220739 or chris@brooklyns.org.uk

Halloween & Trick or Treat Advice

For some people, this time of the year can be a bother as your evenings are interrupted with people knocking on your doors for treats. Most of these children or teenagers are just getting involved in the Halloween celebrations and will be friendly.

If you feel unsafe:

- Don't open your door if you're unsure who is there. Use your spyhole, look out of a window, and use your door chain if you do decide to open your door.
- Have a contact number of a close relative or good neighbour to hand by your telephone, just in case you need to phone them.
- If you are part of a Neighbourhood Watch scheme, let your coordinator know that you will be on your own at Halloween. If you are a coordinator, please identify people in your scheme that may be vulnerable and offer them reassurance.

Thames Valley Police will not tolerate any anti-social behaviour at any time of the year.

To report anti-social behaviour, call 101, the 24-hour Thames Valley Police non-emergency number. If you feel threatened, if it's an emergency, or if a crime is in progress, call 999.

For more information and to download a 'no trick or treat' poster / card please visit the Thames Valley Police website and search "Halloween"

Follow these tips to help keep everyone happy and safe this Halloween

If you have young children:

- Never let them go trick or treating on their own.
- Make sure you accompany them and only visit people you know.
- If you have teenagers:
- Make sure they don't have access to fireworks, alcohol, eggs or flour.
- Explain why they must not play tricks on strangers.
- Tell them that if nobody answers the door, or a 'No trick or treat' sign is on display, they must leave immediately.
- Only knock on a door with a pumpkin or other Halloween decorations on display.
- Remind them to stay with their friends and make sure they know that they should never enter the home of a stranger.



If you do need to talk to the police call 101 or dial 999 in an emergency. For further information visit: www.thamesvalley.police.uk Receive FREE crime alerts, sign up to www.thamesvalleyalert.co.uk

Allotments

The annual allotment rent for 2021/22 is due to be paid at the start of October 2020. The rent due is £2.10 per pole.

EPC requests that payments are made by **internet banking**. Any tenants not able to pay by internet banking please contact the Clerk ASAP to discuss an alternative payment method.

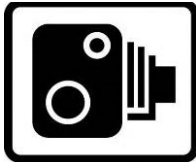
Please ensure rent is paid by 11th October 2021, late payments will incur a £10 administration fee.

EPC currently holds a waiting list for all allotment sites, anyone wishing to be added to the waiting list should contact the Clerk.

Streetlights

Please report failed streetlights in Edlesborough, Dagnall and Northall to the Clerk for repair.

When making a report please ensure you provide the Clerk with the information displayed on the lamp post.



Speedwatch & EDaN Traffic Management

Thames Valley Police have relaunched and restarted their Community Speedwatch – more information can be found at Restart and relaunch for Community Speedwatch in 2021 · [Thames Valley Police & Crime Commissioner \(thamesvalley-pcc.gov.uk\)](https://www.thamesvalley-pcc.gov.uk) Any parishioner interested in becoming involved with the EDaN Community Speedwatch for

Edlesborough Parish should contact Cllr Alan Williams via email at alan.williams@edlesborough-pc.gov.uk or on 07828 398371

Council Meetings

The next Edlesborough Parish Council Meetings will take place on:

- Thursday 21st October 2021
- Thursday 18th November 2021

The meetings will commence at 7:30pm.

In line with current Government legislation all council meetings must again be held face to face, with the facility for public attendance where possible, meetings can no longer be held purely remotely as allowed for the past year. Any parishioner wishing to attend the Ordinary Council meetings should visit EPC's website for the latest information.

Parishioners are welcome to attend all Ordinary Parish Council meetings and may ask questions, raise issues and give suggestions during the Open Forum before the formal start of the meeting. Council requests that where possible questions, issues and suggestions are submitted in writing to the Clerk by the Tuesday preceding the meeting.

The full minutes of the Parish Council meetings are available to view on the website or from the Parish Clerk.

All the hyperlinks in the information above can be accessed through the Edlesborough Parish website.

Edlesborough Parish Council Contact Information:

Clerk: Miss Penny Pataky *Office hours Mon – Fri 9am – 12pm (Excl. Wed)*

Email: clerk@edlesborough-pc.gov.uk 01525 229358 Website: www.edlesborough-pc.gov.uk

Facebook: www.facebook.com/EDANParishCouncil



Sentinel Speedwatch Camera for Edlesborough Parish

What is Sentinel?

It is a fixed speed camera, mounted on a tripod that can be moved to any suitable site where it is suspected that speed of vehicles is a problem.

Where will Sentinel be used?

Sites in Edlesborough Parish have been identified and new sites will be added. It will be used where we have already identified vehicles travelling significantly above the speed limit. The sites need to be approved by Thames Valley Police.

When will Sentinel be used?

Edlesborough Parish Council pioneered the use of this device that was adopted across Buckinghamshire some years ago. We hold a device for sharing with other parishes. Therefore, we will be using it at random times of the year, at different times of the day, in various locations.

How will Sentinel be used?

It is operated by volunteers from the community, who will set up the camera (with warning signs). You might be amazed how many drivers ignore these! The camera then takes a photo/video of all vehicles that are speeding. If the vehicle is not speeding, then the camera ignores it and does not record anything. Normally a site session will be between 1-2 hours. We will move the device between the villages so we need volunteers from *Edlesborough, Dagnall and Northall*.

What happens to the information?

The data captured is then sent to Thames Valley Police for processing. First time offenders may be sent a warning letter advising that they have been caught with date, time and location and a warning that if caught again anywhere within the Thames Valley Police area (Bucks, Berks and Oxon) then further proceedings may be taken.

We are now able to use the system again following a pause during the Covid-19 restrictions.

We are in the process of establishing training sessions for new volunteers and some of those previously trained (changes in the process have been introduced).

If you have not made a recent contact, please get in touch with Alan Williams 07828 398371 or alan.williams@edlesborough-pc.gov.uk or look on the council's website for details www.edlesborough-pc.gov.uk

To find out more about Speedwatch across the UK go to <https://communityspeedwatch.org>



Eaton Bray Cricket Club (Est 1914)

2 Teams FCCL

1 Team Beds Sunday League

1 Team Village T20 League

6 Junior Teams U15 2xU13 2 x U11 U9

Good on & off field facilities

Come and join a family friendly & progressive cricket club.

For more information contact us on Facebook & Twitter @EatonBrayCC



Fundraising for

**MACMILLAN
CANCER SUPPORT**
RIGHT THERE WITH YOU

Charity Quiz Night

Friday 22nd October

7.00 p.m.

for 7.30 p.m. start.

at

Leighton Buzzard Rugby Club
Stanbridge Rd.

Teams of 6 to 8, or we can put you in a
team, £10 each including Supper.

Licensed Bar

To book call the Rugby Club 01525
371322 or Kim on 01525 223032 or
Sheila on 01525 221556

If you enjoy a quiz, please come along
and support this worthwhile charity.



Reg Charity261017

For a top quality
decorating job call

Marc Flack

01442 842639 (Dagnall)

Trading locally for over 15 years
References are available.

EDLESBOROUGH SURGERY

11 Cow Lane Edlesborough

All Enquiries/Appointments

01525 221630

www.edlesboroughsurgery.co.uk

Friendly village Practice
offering a wide range of
health services including coils/
implants, minor surgery, travel
advice, in-house blood tests at
surgery, on-line appointments
and repeat prescription
ordering.

EDLESBOROUGH PHARMACY

01525 223181

Pharmacist - Mitul Patel



**Friendly reliable professional service at the pharmacy
and well-established delivery service to the villages.**

Professional advice always available.

All doctors/dentists/veterinary/hospital prescriptions dispensed.

**Herbal/Homeopathic products available. In addition we supply Disability
aids, e.g. Wheelchairs, Incontinence aids, Ostomy/Colostomy products,
Malaria Prophylaxis, Private Flu Vaccinations**

We are happy to order any products you may require.

Instant PASSPORT/ID Photos available

***** New for Everyone with Dunstable Doctors *****

**Patients of Kirby Road, West Street, Kingsbury Court, Priory
Gardens, Eastgate Surgery**

**Sign up now to have your prescriptions sent electronically to
Edlesborough Pharmacy. Collect your medication from us, no car park
charges and a well stocked pharmacy.**

**We have a free weekly delivery service for the housebound, elderly and
for those unable to collect from the pharmacy.**

email mitul.patel5@nhs.net / Tel 01525 223181 for sign-up forms

ASPECT

YOUR LOCAL ELECTRICIAN
OVER 20 YEARS EXPERIENCE

ELECTRICAL

CONSUMER UNIT UPGRADES (FUSE BOARDS)
LIGHTING - INTERIOR, EXTERIOR & SECURITY
HD CCTV
REWIRING
NEW INSTALLATIONS
TESTING & INSPECTION

ALL WORKS TO CURRENT WIRING & BUILDING REGULATIONS
PART P CERTIFICATED & FULLY INSURED

CALL STEVE ON
07976 283969
aspect@sparky.me



CHIROPODY HOME VISITING PRACTICE

Julia Reading, BSc(Hons)

17 years experience

- * Corns * Hard skin * Verrucae
- * Thickened/Ingrowing nails
- * Nail cutting * Diabetic feet

Please telephone: 0774 647 2781

for more information or to make
an appointment



The COLLEGE
of PODIATRY



Café masala

Exquisite Indian Cuisine

We Cater for Office or Private Parties and don't
forget to try our Sunday Buffet

10% Discount on all Takeaway Orders Over £12

Fully Licensed & Air Conditioned

Open Seven Days a Week

Hours: 12 Noon to 2.30pm & 6.00pm to 11.30pm

Tel: 01525 22 22 64

63 Bower Lane · Eaton Bray · Dunstable · Beds · LU6 1RB
email: taraque@hotmail.co.uk · www.cafemasala.com



JAMES FALCON-CROSS

LANDSCAPING AND OUTDOOR LIVING DESIGN

**ALL ASPECTS OF LANDSCAPING
UNDERTAKEN INCLUDING
FENCING, TURFING AND PATIOS**

**TIMBER STRUCTURES
DESIGNED AND BUILT**

VEGETABLE AND HERB GARDENS

01442 843258 / 07769 901325

ONECROSSFALCON@GMAIL.COM



BRITISH
PROPERTY
AWARDS

2020 - 2021

★★★★★

GOLD WINNER

LETTING AGENT
IN DUNSTABLE

Giblin

The Village
Property Experts

If you are thinking of moving, or are curious about
the value of your property, then call
The Village Property Experts.



Giblin Property • 4a Wallace Drive • Eaton Bray • Bedfordshire • LU6 2DF

01525 220605

info@giblinproperty.co.uk • www.giblinproperty.co.uk • lettings@giblinproperty.co.uk

Gas Boiler Servicing

Over 40 years experience

Have your boiler serviced by a **Gas Safe**
and **CORGI** registered engineer

Other services available:

Maintenance, repair and installation of all domestic gas appliances including LPG. Boiler installations, Landlord Safety Certificates and Power flushing.

Free Quotes, no call out fee, and free friendly advice on all of the above.

Edwards Gas & Heating Services

Eaton Bray

Tel 01525 220626

www.edwardsgasandheating.co.uk

stevethegas123@gmail.com



Over 30
Years
experience.
FREE
Quotes

Misty Double Glazing?

Over 30
Years
experience.
FREE
Quotes

**KEEP YOUR WINDOW FRAMES...
... WE JUST REPLACE THE GLASS!**

• UPVC • Aluminium • Or Wood

Because we replace just the glass the repair is a
Fraction of the cost of a complete replacement window.

BEFORE



AFTER



mistydoublinglazing.co.uk

QUALITY GLAZING SERVICES

01525 876808

WE ALSO REPLACE BROKEN...

• Glass • Handles • Hinges & Locks

AND REPAIR...Patio Doors & Conservatories!



Live a healthy & active life

Free 10 minute advice chats with
our Chartered Physiotherapists
& HCPC Registered Podiatrists

PHYSIOTHERAPY
PODIATRY &
CHIROPODY
PILATES
ACUPUNCTURE
SPORTS INJURIES
MASSAGE
WOMEN'S HEALTH
& PREGNANCY
CARE

St. Judes
physiotherapy, health and well being

01525
377751
enquiries@stjudesclinic.com
www.stjudesclinic.com



M J Security Systems Limited

www.mjsecurity.co.uk

01582 665022

Intruder Alarms CCTV Door Entry/Access

- Est. for 35 years and NSI Gold Accredited Installer since 1987
- Bespoke systems for commercial and domestic properties
- Free site surveys and quotations
- Takeover/removal/upgrade of existing equipment
- 24 hour/365 day engineer access
- Non contract engineer call out



Absolutely Plastered

DOMESTIC/COMMERCIAL,
CLEAN AND RELIABLE SERVICE,
FREE ESTIMATES, FRIENDLY ADVICE



* Plastering & Coving

* Floor Screeding

* Pebbledashing & Rendering

* Dry Lining

* Cornices & Mouldings

* Insurance Work Undertaken

CALL NICK CONWAY ON

Mobile: 07751 830716

17 Kirkstone Drive, Dunstable LU6 3PP

ARC Contract Services Ltd

- Painting & Decorating ● Plastering
 - Wall & Floor Tiling ● Door Hanging
 - Bathroom & Kitchen Installations
- 20 years experience

All work guaranteed and fully insured

Call Adrian : **01582 539179**

Mobile : **07789730580**

CHARLES HILL

GARDEN SERVICES LTD
DESIGN | BUILD | MAINTAIN

LANDSCAPE CONTRACTORS
NCH Horticulture City & Guilds Garden Design

A professional company working with all your garden requirements from design to complete landscape.

07773 723236

www.charleshillgardenservices.co.uk

www.allyearroundbbq.co.uk



**Stephen D.
Janes**

(Established in 1982)

**CARPENTRY, JOINERY
KITCHENS FITTED
PROPERTY MAINTENANCE
TELEPHONE: 01525 220649**

G & J Groundwork & Landscapes

Block Paving * Patios * Driveways
Clearance * Paths * Shingle * Slabs
Artificial Grass * Fencing
Free estimates

Garry

01582 477568 07949 118011

ILLUSTRIA

Kennels & Kathotel

Offering your pet a fully licensed Dog
and Cat boarding service.

Purpose built Dog kennels

Individual Cat chalets with outdoor
exercise runs

All in pleasant country surroundings

01582 ~ 665343



ILLUSTRIA
Springfield Road
Wellhead
NR Dunstable Beds
LU6 2JT



Proprietors

Mick, Denise and Michele Garrod

**toni's
tootsies**

mobile foot health care



-  **Fungal Infections**
-  **Ingrowing Toenails**
-  **Callus/Hard Skin**
-  **Cracked Heels**
-  **Nail Reconstruction**
-  **Verrucas**
-  **Nail Trimming**
-  **Corns**

Toni Nash is a fully qualified Foot Health
Practitioner based in Slapton, Bucks...
and she's ready to take your Call!

07484 749393

tonistootsies@gmail.com
www.tonistootsies.co.uk



Moren Associates
Publishing Services

Desktop Publishing

**Presentations
Books, Leaflets Brochures
Magazines, Adverts
Design & Layout
Self Publishing**

**Digitising
Scanning of Photos &
Documents, Slides & Videos
Archiving, Photo Repairs**

**Domain Name, Email
Address &
Web Site Hosting**

01525 229695

enquiries@morenassociates.co.uk
www.morenassociates.co.uk



TIME TO MOVE?

**Don't be alarmed,
we're here to help!**

Established in 1999

e: info@plummproperty.co.uk

Five Good Reasons to use **Plumm Property**

Pprivate Offices - direct savings to you on fees

Local Knowledge - from our highly experienced team

Unrestrictive contracts - no lengthy tie-in periods

Marketing to outside area - attracting London buyers

Managing all your needs with a 1st class professional service

From Offer through to Completion of Sale



01296 660230

www.plummproperty.co.uk



DM SECURITY

Commercial & Residential Alarm Systems

CCTV • Access control • Intruder Alarms • Locks

Electrical Installations • Fuse Boards • Re-wires

John Dorman: 07483 872017 Chris Mahoney: 07801 552113

20 Slicketts Lane, Edlesborough, Dunstable, Beds, LU6 2JD

JoAnn Latus School of Dance



- Ballet, Tap and Modern classes for children aged 3 and upwards
- Adult Ballet classes starting in the New Year
- Professionally trained teachers and safeguarding policies in place
- Regular exams, shows and theatre trips

Classes held in Buckinghamshire, including Eaton Bray on Tuesday and Friday evenings

For more information contact JoAnn Latus:
Tel: 07800 518654

Email: info@jolatusdance.co.uk
Web: [@jolatusdance](http://www.jolatusdance.co.uk)

McTimoney CHIROPRACTIC



Margie Craib BSc BHSI DC AMC MMCA
Human and Animal Treatments

Ashridge Farm, Ringshall, Berkhamsted, Herts HP4 1ND
Telephone: (01442) 842729

General Chiropractic Council Registration No. 293

Spinney Landscapes & Gardening Services

All Aspects of Grounds Maintenance
Leaf Clearance • Grass Cutting/Scarifying
Patios & Driveways • Pressure Washing
Weed Control • Tree Work & Wood Chipping
Fencing • Snow Clearing • Mini Digger Hire
Tel: 01525 839622 Mob: 07876 500292
Email: spinneylandscapes@gmail.com
www.spinneylandscapes.com



EDLESBOROUGH TENNIS CLUB

Come and play tennis with us at our friendly club on The Green

- High quality floodlight courts with easy booking system
- Coaching available for adults and children from our LTA coach
- Weekly club nights, with balls and floodlights provided

Contact us at: enquiries@etctennis.org or visit us at: www.etctennis.org



EDaN COMMUNITY CAR SERVICE

Volunteer Drivers needed!

The EDaN team are happy to announce that we are back! We had to suspend the service during the pandemic as many of our drivers were at the top end of the age/risk spectrum.



- We need more drivers for the volunteer service we run.
- Your commitment can be flexible and entirely under your control.
- You decide whether you are available via our call controller.
- Drivers are reimbursed by passengers.
- Insurance is not an issue: we have the answers.
- We are backed by Edlesborough Parish Council
- Covid protocols are advised and masks provided.
- A clear guidance handbook is provided to all our drivers.
- We will meet as a team annually to review issues and opportunities.

We have all the answers to your questions, we've been serving the parish since 2009. To become a volunteer driver call Peter Williams on 01442 842506 or email Peterw500@aol.com

This is a much needed service given our rural location and you can get great satisfaction from helping others. Offering a door-to-door service it helps people to access their local community services, attend key appointments and maintain independence.

One day it may be you who needs the service!

St Mary's Village Carnival 2021



What a wonderful day our villages had on 28th August - 2021's Carnival day. The carnival was quite different this year. Almost 2 months later than usual, no procession due to school holidays and a reduced number of stalls and fairground attractions due to the date change and impact of the pandemic. However, despite this, the event was a roaring success.



The charity BBQ was a big success selling out of everything!

enough for a few days from September. Despite no procession, it was still great to see so many decorated houses in our "Heroes" theme.



This year's Big Raffle was a huge success...we sold out of tickets!



A little later in the season this year, but the plant stall did a roaring trade!

Thousands of people flocked onto Edlesborough Green to enjoy the day. The weather was just about right! A little more sunshine would have been nice, but it was dry and warm! Good

As always the arena was hugely popular with the crowds 5 or 6 deep at times. The Dog Show, Appledown Rescue, Magic Dave, Revelation Majorettes, Classic Car Winners all proving a





Miracles happening all afternoon at the Water into Wine stall

hit with the crowds. Note 2022 will bring back those performers that couldn't attend this year. We know some favourites were missed.

The carnival was opened this year by Mr Clive Cook, Chair of Trustees from Dunstable Food Bank, our principal charity. The success of the event means we will be able to send the Food Bank a large donation, thanks to the generosity of all our visitors on the day.

Many thanks as always to the Organising Committee and many other helpers who make this event the success it is! See you all in 2022



The Toy Stall was as popular as ever

when the carnival and procession return to our normal 1st Saturday in July so get 2nd July 2022 in the diary!



Hundreds of books finding new homes



Macmillan Cancer Support

Carnival - Tea Tent Thank You

It may have been delayed by several weeks but this year's Carnival was fantastic. We, in the tea tent, were worried about crowd size given it was a bank holiday and the last weekend before the start back to school. However we needn't have worried as people turned out in their hundreds! The tea tent was busy from start to finish offering amazing cakes and savoury treats as well as hot and cold drinks. Our band of volunteers worked tirelessly in order to meet demand and we can't thank them enough; this includes the logistics team who organised the marquee, Russell Sears for ensuring our electricity was safe plus all the other volunteers who played a part in allowing

us to provide a fabulous tea tent for 2021. It was a brilliant day which raised over £1,200!!



The Charity Tea Tent had queues all day snapping up home made goodies

Carnival Best Dressed House Competition 2021

A VERY BIG THANK YOU TO EVERYONE, who decorated their houses this year, despite not having a Procession. They made a really colourful sight with all the bunting and flags.

To qualify for the cup or a gold, silver or bronze medal, the houses had to be decorated in the theme of "Heroes" and the judges had difficult decisions to make on Saturday morning.

It was a joy to meet the entrants and present the medals later in the afternoon as follows

Eaton Bray

Cup and Gold Medal - 9 High Street
Gold Medals - 42 Moor End, 130 High Street,
The Vicarage, 12 High Street, 18 Moor End
Silver Medals - 96a High Street, 1 Moor

End, 42 High Street
Bronze Medals - 81 High Street

Edlesborough

Cup and Gold Medal - 44-46 High Street
Gold Medals - 80 Moor End, 3 Pebblemoor
Silver Medals - 2 Moor End Close, 53 Moor End

Many thanks to Candy, and Celia for their help and support with the judging.

I am sure we would all like to say a big thank you to Mark Kilfoyle and the Carnival Committee for all the work they put in during the year. It is an enormous undertaking, made so much more difficult this year with the uncertainty surrounding any events.

✍Margaret Jones

World Space Week

October 4, 2021 - October 10, 2021

What is World Space Week?

World Space Week will be held from October 4-10, 2021. It is an annual event that celebrates science and technology and their impact on the development of the human condition. The event begins on the 4th to commemorate the launch of the first human-made satellite (Sputnik 1) on October 4th 1957. It ends on the 10th to honour the signing of the Treaty on Principles Governing the Activities of States in the Exploration and Peaceful Uses of Outer Space, including the Moon and Other Celestial Bodies on 10th October 1967. World Space Week aims to educate people on the benefits they receive from space, gain public support for space programmes and encourage the use of space for sustainable economic development.

What is the theme of World Space Week 2021?

The theme of World Space Week 2021 is 'Women in Space'. Broadly speaking, STEM (science, technology, engineering and mathematics) subjects are seen as being

dominated by men, but there have been lots of amazing contributions by women to the world of space exploration. For example, Katharine Louise Bouman is an American scientist who helped take the first ever photograph of a black hole. Another Katharine, Katharine Coleman Goble Johnson, was an African American mathematician, whose work has been instrumental in US space exploration. Nonetheless, nearly 90% of those who have been to space have been men, so World Space Week is also looking to inspire some new budding female astronauts!

What happens during World Space Week?

Throughout the week there are thousands of events in over 80 countries. These include educational workshops, online lectures and even opportunities to observe planets through telescopes. The events aim to educate people about space and the significance of cosmic discoveries. Plus they provide a chance to appreciate and wonder at the awe-inspiring phenomena of the universe.



NO TRICK OR TREAT

please enjoy your night without disturbing ours



If you don't want to be disturbed by Halloween callers cut out this notice and display it in a prominent position by your front door.

A Thames Valley Police Community Safety Campaign to:

- Protect the elderly and vulnerable
- Protect unsupervised children
- Reduce trick or treat vandalism



Follow these tips to help keep everyone happy and safe this Halloween

If you have young children:

- **Never let** them go trick or treating on their own.
- **Make sure** you accompany them and only visit people you know.

If you have teenagers:

- **Make sure** they don't have access to fireworks, alcohol, eggs or flour.
- **Explain why** they must not play tricks on strangers.
- **Tell them** that if nobody answers the door, or a 'No trick or treat' sign is on display, they must leave immediately.

- **Remind them** to stay with their friends and make sure they know that they should never enter the home of a stranger.

If you do need to talk to the police call 101 or dial 999 in an emergency

For further information visit:
www.thamesvalley.police.uk
Receive FREE crime alerts, sign up to
www.thamesvalleyalert.co.uk

Bonfire advice, disposing of garden waste



A bonfire can be a convenient way of getting rid of a large amount of waste. However, there may be other options which are better for the environment and your garden.

The following are recommended alternatives to a bonfire:

- Composting soft garden waste such as grass cuttings and leaves is the best means of disposal as it returns nutrients to the soil.
- Woody garden waste cannot be easily composted so may be disposed of by cutting relatively short and packing into your green wheelie bin.
- Large amounts of household and garden waste can be taken to a local household waste and recycling centre.

Alternatively consider hiring a skip from a private company. If you would need to place the skip on the road or pavement rather than in your garden, then you need to obtain a licence from Buckinghamshire Council.

Additionally, the Council's Waste Team can collect bulky items of household refuse e.g. old furniture, mattresses and floor coverings. For more details visit: www.aylesburyvalecd.gov.uk/bulky-item-collection.

However, if you decide to have a bonfire, we advise you to follow these guidelines to reduce the likelihood of causing a problem:

- **DO** advise your nearest neighbours before you light a bonfire so they can be prepared for any minor inconvenience that may arise.
- **DO** choose the time of day and weather conditions that will cause the least inconvenience to neighbours and passing motorists. Having a bonfire on a warm day or evening when people want to enjoy their garden and tend to have doors and windows open will cause greater annoyance.
- **DO** burn material quickly in small quantities so the minimum amount of smoke is created.
- **DO** be aware of where the smoke is likely to travel, consider your neighbours and roads.
- **DO** choose your bonfire site carefully, well away from trees, boundary fences and windows.
- **DO NOT** burn wet or green garden waste. This will create heavy smoke. Allow clippings to dry and turn brown for a couple of weeks before burning.
- **DO NOT** burn any oily rags, rubber, plastics or other materials that will create heavy smoke or toxic fumes.
- **DO NOT** light a bonfire when your neighbours have washing drying or are out enjoying their gardens or have windows wide open.
- **NEVER** leave a fire unattended

Beware of lighting bonfires when there are unstable weather conditions, for example on very windy days it can so easily get out of control. Have a hose pipe and buckets of water handy just in case.

Hose it down until cold before you leave and then rake the ashes into the soil as a useful fertiliser and prevent them being blown onto your neighbour's property.

Garden Waste Service

The council also offers a garden waste service, which runs annually from February to November and costs as little as £45 per yearly subscription.

Arrange a garden waste collection and save a trip to the tip!

Please visit <https://www.aylesburyvalecd.gov.uk/garden-waste-service> for more information.

(Advice taken from Buckinghamshire Councils website.)

Be More Active - Tips from St. Judes



By being more active across the day, you will feel better, burn more calories and appreciate the outdoors. Make moving more part

of your daily routine with some tips from St Judes:

- Clean your way to fitness – cleaning around the house will have you moving and breaking a sweat and don't pay someone to wash and clean your car, do it yourself save money and burn extra calories along the way.
- Don't be a couch potato - if you love nothing more than sitting on the sofa and watching a box set after a day at work sat at a desk, why not do the ironing, tidy the room or clean out that cupboard that you have been meaning to do for ages.
- Catch up with friends - instead of a boozy lunch, head to the park, beach or countryside for a walk
- Get down with the kids - simply throwing a ball around in the garden or a game of hide

and seek can get everyone up and moving. Why not put on some dance party music or an interactive dance game after dinner.

- Park further away – if you have to drive to work or the shops, park at the back of the car park so you need to walk further.
- Go barking mad - when you're a dog owner walks become a part of life and are great for your physical and mental health too.
- Get off your chair -alternate between standing and sitting or get a standing desk.

If you have a muscular or bone problem holding you back from doing the things you love, why not get a physiotherapy assessment? They can offer effective treatment and advice to stop the problem from returning.



St Judes Clinic
26 Lake Street
Leighton Buzzard
LU7 1RX

  **01525 377751**

 **www.stjudesclinic.com**
enquiries@stjudesclinic.com

Your Photos

Magnolia Stellata
by John Hockey



St Mary's Christmas Fair

Saturday 27th November 2021

12.00 - 3.00pm

Eaton Bray Village Hall

50p admission adults - Children free!

Come and visit

Santa and Mrs Claus

with their elves in their
Christmas grotto at this
year's Christmas Fair!



With lots of other stalls to browse for your Christmas presents, or just to treat yourself! Delicious bacon butties and other refreshments on sale all afternoon.

For more information, or to book a stall, please ring 01525 852368.

Christmas Gift Fair

11 - 3pm 20th November 2021

A beautiful selection of gifts
including Christmas
decorations, jewellery, food,
homeware and more...

Buckinghamshire College, Oxford Road,
Aylesbury, HP21 8PD

FREE PARKING

Entrance £3 / Concessions £1.50



Pace is a charity providing an outstanding education
and first class therapy for disabled children.

thepacecentre.org

Charity No. 101133

Music at St Mary's

POPPY PROM

13 November, 7.30pm

St Mary's, Eaton Bray

**A celebration of 'Remembrance' and
'The Last Night of the Proms'**

**featuring: Dagnall Community Choir, South Beds
Concert Band, plus soloist Helen Watkins**

TICKETS ON SALE NOW



Box Office: 01525 222283

**Tickets (£12.50) will go fast so hurry to book your
seats!**



The EDaN Community Car Service for Edlesborough, Dagnall, Northall is back from the 1st October!

The EDaN Community Car Service for Edlesborough, Dagnall and Northall was established in 2009 with a team of volunteer drivers. Unfortunately, we were forced to suspend our comprehensive service when Covid-19 hit. Now with vaccinations and established protocols we want to get back to helping parishioners.

Our Community Car Service provides a lifeline to older and vulnerable people who struggle to leave their home due to their location, having mobility problems, not having family or friends nearby or not having easy access to public transport

The service has a co-ordinator (Peter Williams) who organises our dedicated band of volunteer car drivers to provide help with attending medical appointments, social events, the hairdressers, the shops or just visiting friends. We don't mind where people go (except airports); we're just here to help. Over the years our service has had a big impact on the lives of residents throughout the Parish of Edlesborough and beyond.

Our volunteer drivers are fully insured and are backed by Edlesborough Parish Council's public liability insurance so both you and drivers are covered for the trips. There is no membership fee. Passengers pre-book a journey with Peter who matches up the travel requirement with the drivers available. Drivers collect passengers from their home, taking them to their appointment and returning them back home as requested.

If you are new to our service you will need to answer some questions the first time you call to ensure that we are able to provide you with the help you need. There is a small mileage charge, approved by government and accepted by insurers. Passengers then pay the driver for any trips calculated on mileage.

If you want help from our service please call Peter on 01442 842506.



Baby Southern White Rhino Born at ZSL Whipsnade Zoo



A Southern white rhino calf (*Ceratotherium simum* ssp. *simum*) has been born at ZSL Whipsnade Zoo.

The female calf, named Nandi by zookeepers, which means 'sweet one' in Zulu, was born at 4am on 21 August at the conservation Zoo, and is a welcome addition to the European Endangered species breeding programme. She joins her mum Tuli and dad Sizzle within the Zoo's herd (also known as a "crash") of eight Southern white rhinos.

Following a 16-month pregnancy, keepers at the UK's largest Zoo had been using stool samples from 14-year-old rhino mum, Tuli, to monitor her hormone levels, and knew that she was within a couple of days of giving birth. They were delighted when she gave birth to a healthy, female calf in an indoor part of the enclosure that had been reserved for her use.

Weighting Game

ZSL Whipsnade Zoo's 9,500 animals step up for Annual Weigh-In

A huge-scale operation was undertaken at ZSL Whipsnade Zoo, as keepers coaxed thousands of animals, including meerkats, reindeer and rhinoceroses, to step onto the scales for the annual weigh-in.

As part of their regular check-ups, all creatures great and small have their vital statistics recorded as a way of keeping track of the health and wellbeing of the 9,500 animals at the conservation Zoo.

Greater one-horned rhinoceros Beluki, one of the heaviest animals at the UK's largest Zoo, stepped onto an industrial sized scale and weighed in at 1650kg, while the Zoo's smallest inhabitants, like butterflies and spiders, required extra sensitive equipment to weigh them accurately.

Visitors can encounter the huge range of animals, from mini to mammoth, for themselves this bank holiday weekend at ZSL Whipsnade Zoo. Book online at zsl.org



Good Life Refill

Thinking about Climate Change and sustainability I have started using shops which refill products. There are several of these locally. Here is my interview with Heni from the Good Life Refill shop on High Street in Leighton Buzzard. My questions are in bold. (Revd Joy Cousans)

Can you give a bit of background about yourself.

My name is Heni and I run The Good Life Refill – Leighton Buzzard’s first low-impact living and refill shop. We sell organic, dry goods without plastic packaging, as well as cleaning and lifestyle products. We source our goods from co-operatives, try to choose fairtrade, and support local makers too. The aim is to make it easy for people to make sustainable choices because we’ve done most of the legwork for you. The business was set up in May 2020. I began by trading on markets and took on a permanent shop in June this year.

I grew up in Leighton Buzzard but have lived in various cities over the last eight years. I’ve always been driven to make a positive difference to the world but often felt frustrated that the work I was doing didn’t really make an impact. Pre-pandemic, I was pursuing a career in documentary film editing. I kept thinking: You can watch a film and feel inspired, but if you don’t have a space or community to help turn that inspiration into action, then what difference has it really made?

In September 2019, I moved back to Leighton Buzzard to support my dad through chemotherapy. Along with the pandemic, it put a lot of things into perspective for me which ultimately led to setting up The Good Life Refill.

What started your interest in issues of sustainability?

Like a lot of my generation, growing up with



social media made sustainability a constant background issue. For a long time, trying to recycle properly and having a reusable coffee cup felt like I was doing my bit.

Three years ago, that changed when I worked for the United Nations Communication Centre. Everyday I had to do a daily summary of the news headlines. Everyday I was reading about forest fires, floods, famines, species extinction, plastics pollution, refugees. Climate change was no longer an abstract disaster in the future; it was impacting people right now across the world. At the time it made me feel kind of hopeless because I was in this place where it felt like everyone sat around talking about it, but not making any real changes, both on a personal level or governmental.

From there, it was gradually teaching myself more about how everyday decisions make a difference. Then making that change. And then always asking: “what next?”

I really recommend a podcast called “A Sustainable Mind” where they interview ordinary people whose jobs are all about sustainable living, from foraging workshops and organic farming to clean energy production and green investments.

Why do you think it is important?

As Greta Thunberg said: “I want you to act as

if our house is on fire. Because it is.”

We can't just shut the door and pretend it's not happening. We also can't turn a blind eye because the fire is impacting our neighbours worse than us.

The levels of CO₂ in the atmosphere are the highest they have ever been. Humans have caused the world to heat up by 1.1C in the last century and we're already seeing the impacts of this in volatile weather conditions.

Limiting the rise to 1.5C was the goal set by the Paris Climate Agreement in 2015. We're going to hit that before 2040. Every degree of warming matters. Taking urgent action ensures we can maintain a stable, liveable environment.

But sustainability is more than gloom and doom!

It's important because it's also really exciting. Sustainability asks us to be creative and imagine what healthier world can look like. It needs us to focus more on our local communities as we saw during the lockdowns. It's about reconnecting with what makes us human and that it really is possible to thrive without harming the planet.

What inspired you to start the Good Life Refill shop?

A lot of people would like to live a more eco-friendly lifestyle, but feel overwhelmed with choices: What's the best option? Is it recyclable? Is it better value for money? The main inspiration behind The Good Life Refill is making it possible for people to shop for good food without having to worry about those questions.

I spent a lot of time growing vegetables during the pandemic and thinking to myself: "wouldn't it be amazing to have a shop where you really knew where your food had come from?" So, a big inspiration behind Good Life Refill is knowing who the suppliers are and sharing that with customers.

Supporting my dad through chemo, I did a lot of research on how food impacts your



health. This definitely inspired the shop stocking a wide range of products (now over 250). Variety really is the spice of life when it comes to food and health.

The refill process is inspired by other shops across the world that do the same thing. I'd used some of them in other towns and loved their simplicity. Many people said it wouldn't work in Leighton Buzzard, but we've got a strong and growing customer base that prove refill shopping is the way to go.

How does it work?

It's simple:

1. Bring your containers to the shop. We're really not fussy. Don't feel you have to buy new containers either: jam jars and old take-away tubs are perfect. We also always have paper bags as an alternative.
2. We weigh your containers and zero the scales.
3. Select the product you want. We'll fill up your jar with as much or as little as you like. There's no minimum, so if you only need 50g of icing sugar for some cupcakes, that's okay with us. There's no maximum, so if you need 10kg of oats, that's okay too!
4. We weigh it out for you. Then only charge you for the weight of the goods.

You can also just pop in for a chat. The other shop assistants or myself will happily answer any questions about our products, pricing, or suppliers. We can offer recipe suggestions and sustainability tips. Plenty of customers like to come in to rant about the state of the

world too.

What's the best thing about running the Good Life Refill Shop? And the worst?

Connecting with people about sustainability and making eco-friendly living accessible to them is the best thing. I sometimes can't believe I get to talk about food and the environment all day with other people who are also passionate about food and the environment. I also love when my customers share their newest sustainable discovery with me. The shop feels like a real community space.

The worst is refilling turmeric. Wonderful spice with so many health benefits... but it gets everywhere and dyes everything yellow.

What top tips would you give that people can do at home to reduce their carbon footprint?

A big percentage of carbon emissions actually come from big companies. As individuals, the best way we can reduce our carbon footprint is spend our money on greener alternatives. This looks like:

1. Switching energy supplier to a renewable energy company, like Bulb, that use wind and solar.
2. Reducing the amount of animal products you eat. Not always the most popular tip, but animal farming requires more land, water and energy to produce, so even just cutting out meat or dairy for two days a week has a big environmental impact.
3. Refusing single use plastic packaging. Waste has a big carbon footprint, even recycling plastic requires energy. Buying your fruits & veggies loose, or using a refill shop, is an easy way to reduce your footprint. Choose one item and commit to buying it plastic free.

As we approach COP26, what do you think are the most urgent environmental issues to be addressed?

We need to hear about the "how" underpinning

the promises. The majority of governments in richer countries should be promising net-zero emissions by 2030. What is really urgent is an agreement on what that path looks like so that these commitments can be upheld.

Secondly, that plan needs to make sure we don't leave people behind as we transition. Like with agriculture. There have already been some moves towards regenerative agricultural practices, by accelerating this transition we can boost food production and resilience to unstable climates. However, we need to make sure young farmers and small farms are consulted and supported in these plans too.

What is your favourite recipe?

I don't always have time to eat a proper breakfast, so these easy to make granola bars are perfect for on the go, or as an afternoon snack. Amazingly you can get all of these ingredients (except butter) without plastic packaging as refills.

100g butter, plus extra for greasing

200g porridge oats

100g sunflower seeds

50g sesame seeds

50g chopped walnuts

3 tbsp honey

100g light muscovado sugar

1 tsp ground cinnamon

100g dried cranberries/chopped apricots/raisins

STEP 1

Heat oven to 160C/fan 140C/gas 3. Butter and line the base of a 18 x 25cm tin. Mix the oats, seeds and nuts in a roasting tin, then put in the oven for 5-10 mins to toast.

STEP 2

Meanwhile, warm the butter, honey and sugar in a pan, stirring until butter is melted. Add the oat mix, cinnamon and dried fruit, then mix until all the oats are well coated. Tip into the tin, press down lightly, then bake for 30 mins. Cool in tin, then cut into 12 bars.



Northall Baptist Church

200 years and still going

A little Church with strong local links

Freedom

What is freedom? Are we free?

Freedom, generally, is having the ability to act or change without constraint. Something is "free" if it can change easily and is not constrained in its present state. This is what Wikipedia says about freedom.

Do we have the liberty to change things without constraint? Well that's debatable. We like to think that we have freedom of speech, religion, freedom of the press, freedom to go more or less where we want. We often find that that our freedoms impinge, though, on the freedoms of others.

We have just been through 18 - 19 months so far of the pandemic Covid-19. Most of us have found that we weren't as free as we wanted to be. We couldn't see family and friends or go to some shops. Sport venues were closed or operated without audiences. We had to stick to the newly made laws. And we didn't like it. We wanted to be free to live our 'normal' lives.

Today our TV screens are full of refugees and migrants who want to be free. They are escaping Afghanistan and other countries, taking great risks with their lives, for freedom. Freedom is what they hope for.

In 1989 the desire for freedom led to the Berlin wall coming down and the subsequent unification of East and West Germany. The oppression of communist control was fought against. They wanted freedom and after 44 years achieved an amazing victory which changed their lives.

The Bible has a great deal to say about freedom. We are created with free choice.

We can choose to do the right thing or the wrong thing. We can choose to trust in Jesus.



Does that make life easy? No, it brings challenges along the way. Jesus himself told us how to have freedom. He said in John 8 v 36: 'So if the Son (Jesus) sets you free, you are truly free'. Truly free is a state of our hearts and minds. The prophet Isaiah wrote that He (Jesus) was sent to proclaim freedom. His death sets us free if you believe and accept him. There has been continuing attempts to eradicate this freedom but it's still going strong, still growing.

Freedom also has responsibilities. As we found during the various lockdowns, we had a responsibility to follow the rules and guidance for our own protection. Jesus makes us free but we also have a responsibility to choose the right thing to do. So we must live as people who are free, not using your freedom as a cover-up for evil.

Our Sunday services, are now back in Church 11 am. Feel free to join us for our worship and song. You will get a warm welcome.

For those interested in the history of Northall Baptist Church, a free copy of the booklet, *Rebels in Green Pastures* can be supplied or downloaded from our website: <http://northallbaptistchurch.org/>
✉ Ruth Cox Tel: 07791 425625

LOCAL HERALDRY

BY JOHN HOCKEY

In this series, we take a look around local towns and villages to find interesting and unusual heraldry.

URBAN HANLON BROUGHTON

Urban Hanlon Broughton was the man whose donation enabled Ashridge House to be bought on behalf of the Conservative Party in 1928 as a replacement for the training centre near Northampton, which was thought to be too small.

Under the guiding hand of Lord Davidson, Chairman of the Conservative Party, funds were raised 'without blatant recourse to the sale of political honours'.

The identity of Urban Hanlon Broughton, former M.P. for Preston, was revealed in The Times in 1928 to 'preserve for the nation a historic site and beautiful building, and to establish a centre where all grades of Conservatives can find a curriculum suited to their requirements, and to give enjoyment to the public by admitting it to the gardens once a week'.

Sadly, Urban Hanlon Broughton died in January 1929, but it is noted that his elevation to the Peerage would have been forthcoming, but owing to his demise it was granted to his son, Urban Huttleston Rodgers Broughton who became Baron Fairhaven of Anglesey Abbey, Cambridgeshire.

The arms, crest and badge were granted in 1923 by Garter and Clarenceux (prominent members of the College of Arms). A grant of supporters was made to the son in 1929 and the crest was also altered. The arms, supporters and a baron's coronet are carved in stone over the front porch of Anglesey Abbey.

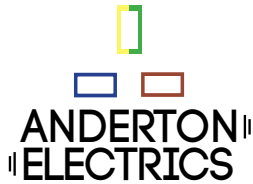
Later in 1929, a memorial tablet bearing the Fairhaven coat of arms to dexter* (LH side) was unveiled in the Ashridge chapel by Stanley Baldwin. The arms to sinister (RH side) are those of his wife, Cara Leland Rogers.



*Argent two bars and in the dexter chief point a Saltire coupé Gules = silver (white) with two red bars and a saltire cross with cut-off arms, also red.

One wonders if the cross relates to the ballot box, but for a Conservative, surely blue would have been more appropriate?!

Next time more local Heraldry



Keeping you wired up.

- ✓ Free quotations, no obligations
- ✓ Emergency Work – day or night
- ✓ Domestic or Commercial
- ✓ A name you can trust

Dunstable - 01582 343 123
 Tring - 01442 824 740
 Mobile - 07771 698 151
 james@andertonelectrics.co.uk

Checkatrade.com **See our feedback on Check a trade**
 www.checkatrade.com/andertonelectrics



www.andertonelectrics.co.uk

NG AUTOS



MAKING YOU AND YOUR CAR HAPPY

- CAM BELTS • MOT'S • MOT REPAIRS • HEAD GASKETS
- AIR CONDITIONING • RECOVERY/BREAKDOWN
- DIAGNOSTICS SERVICING • BRAKES • SUSPENSION
- CLUTCHES • GEARBOXES • TYRES • WHEEL BALANCING
- WHEEL ALIGNMENT COLLECTION & DELIVERY

CALL NICK OR GARY

01525 220850 OR 07972 198615

**SPARROW HALL FARM, LEIGHTON ROAD,
 EDLESBOROUGH LU6 2ES**



Reception



Service Bays



MOT Station



**'They are like trees growing...
they keep on bearing fruit'**



**Dagnall C of E school is
a nurturing and inclusive
learning community,
situated at the foot of the
Chiltern Hills.**

Ofsted 'good' (June 2018):

"A positive learning environment where pupils are exceptionally well cared for and nurtured."

SIAMS (July 2018):

"The school is outstanding at meeting the needs of all learners."

We offer a unique, family feel where children benefit from small class sizes and personalised learning. We provide a creative environment where children feel safe to challenge themselves and to develop their love of learning.



SPACES AVAILABLE

To arrange a visit please call: 01442 842473
or visit: www.dagnall.bucks.sch.uk email: office@dagnall.bucks.sch.uk

We are a nurse-led home care provider committed to delivering the very highest standards of care.

Support from our dedicated team gives you or your loved one the peace of mind and confidence to be able to continue living at home.

Family-owned and managed, we are independent and do not belong to a national chain or franchise. We are registered with the CQC, number 1-1499072841.

To talk to us about your requirements please call Helen Yates RGN on 07920887414 or 01442 843064 or email helen.yates@yourownhomecare.co.uk

www.yourownhomecare.co.uk



D.A. Windows, Doors & Conservatories

Emails: dawindows@live.co.uk
mimcavinder@hotmail.com

Telephone: 01582 485443
Mobile: 07807 798387

- Installation of UPVC windows, doors and conservatories
- Composite doors and side lights – choice of design and colours
- Replacement glass units and window maintenance

QUALITY PRODUCTS
QUALITY WORKMANSHIP
QUALITY PRICES
Contact us for a quotation or to discuss your requirements

ACCREDITED MEMBER
OF THE INCORPORATION
OF PLASTIC WINDOW
FABRICATORS AND
INSTALLERS

GOVERNMENT APPROVED
CERTASS REGISTERED
CONTRACTOR REG. NO.
001634

Leighton Aerials

Established 1970

For all your aerial and satellite needs call Colin on

01525 374742





The Gentleman Gardener

Let your local RHS qualified gardener make your garden beautiful, from simple garden maintenance to total redesign of your garden.

Please call Barry on
01525-222451 or
07541196384

to pop round for a free chat.



**A McClelland
Pest Control**
FOR FAST RESPONSE CALL:
Mobile 0777 494 8415
Office 01582 872158



*specialists in: wasps - bees - ants
hornets - fleas - cockroaches - bed
bugs - pigeons - magpies - rabbits
rats - mice - moles - squirrels
foxes - mink - feral cats*



UNMARKED VEHICLES
For further information please call or email
amcclellandpestcontrol33@gmail.com



TODDINGTON

INDEPENDENT FINANCIAL ADVICE



DO YOU NEED FINANCIAL ADVICE?

We can help you to review your current or proposed,

**Mortgages, Insurances, Pensions & Investments, Equity Release, Inheritance Tax,
Wills and Trusts, or a general review of your current position?**

'As a mortgage is secured against your home, it may be repossessed if you do not keep up the mortgage repayments. The financial conduct authority does not regulate tax and estate planning or will planning'

**Unlike some TV adverts we don't charge a fee for equity release, so no broker fees
added to your loan!** 'Equity released from your home will be secured against it'

LOCAL OFFICE: Toddington

Contact: Philip Hadlow
Tel/Fax: 01525 874100
Mobile 07768 277 532

info@toddingtonifa.co.uk
www.toddingtonifa.co.uk

**Free Will with Investments & Pensions placed through
us of over £50,000 and within 6 months of investment**
Talk to us for a free initial consultation

Toddington Independent Financial Advice Ltd is authorised and regulated
by the Financial Conduct Authority.

Registered office: The Stables, Griffin Farm, Conger Lane, Toddington,
Bedfordshire, LU5 6BT

Registration Number: 760687 Company Number: 9931606



EDLESBOROUGH
PRIMARY ACADEMY

Inclusive education that inspires inquisitive learners

For more information about our pre-school and primary school or to arrange a visit, contact us on 01525 220431 or email us at EPAManager@epa-primary.org

Edlesborough Primary Academy, High Street, Edlesborough, Dunstable, Bedfordshire LU6 2HS

epa-primary.org

Edlesborough Primary Academy is part of the Knowledge Schools Trust



All Aspects of Pressure Washing

- Roofs cleaned and coated
- Block Paving Refurbished
- Driveways/Patios/Pathway Cleaning
- Building Fascia/Cladding Cleaning
- Gutter Vacuuming
- Fascias & Soffit Cleaning
- Graffiti/Chewing gum removal
- Conservatory Cleaning

0800 298 5883

www.greatoutdoorscleaning.co.uk



FREE INITIAL CONSULTATION

**ALL ACCOUNTING,
PAYROLL AND TAXATION
SERVICES COVERED**

Specialising in New Business Start-Ups

- Fixed Fee Quotes
- Unlimited Email and Telephone Support
- Back Office Solution
(dealing with your back office accounts function enabling you to focus on the rest of your business)

Please contact us for more information...

Gable End, Sparrow Hall Business Park, Leighton Road, Edlesborough. LU6 2ES

Call us on... 01525 229 539

enquiries@rileyaccounts.co.uk • www.rileyaccounts.co.uk

@RileyAccounts • Also on

"YOUR LOCAL ACCOUNTANT"



- Parties Wedding Receptions Stage Productions*
- Fitness Classes Business Meetings Beer Festivals*
- Film Shows Club Meetings Keep Fit Quiz Nights*

Eaton Bray Village Hall

Capacity for 220 People Parking for 70 Cars Meeting Room Countryside Views

Bar Facilities Kitchen Facilities Full AV Facilities Baby Changing Wheelchair Access



For bookings or enquiries call: 07975 797 202

email: bookings@ebvh.co.uk

www.ebvh.co.uk



WAGGING

wonderful dog grooming

Here to take care of your mucky pup!

Your local dog grooming service in Eaton Bray

1-2-1 care for your dog

NO cages!

07580 343396

www.waggingwonderful.co.uk

info@waggingwonderful.co.uk

James B Chadburn FBHI

Fine Antique clocks & Barometers

Specialist in repairs & restorations.

Valuations & clock finding service.

Advice & assistance on formation & disposal of private clock collections.

Quality clocks/barometers Bought & sold.



Telephone 01525 221165

Mobile 07790 000629

E-mail: info@jameschadburn.com

StotenGillam

chartered accountants
chartered tax advisers

Our aim is to provide an outstanding professional, cost effective and friendly service

- ✓ Established over 50 years
- ✓ Traditional values with forward thinking and modern technology
- ✓ Full range of business and personal accountancy and tax services
- ✓ Latest cloud software
- ✓ Free initial meeting



Tel: 01582 608601
99 High Street South,
Dunstable, LU6 3SF

Contact us today:
enquiries@stotengillam.co.uk
www.stotengillam.co.uk
f @stotengillam

Crittercare

Dog walking & pet sitting



We look after any animal from Hamsters to horses

Prices start from £6 per day

Tel: 07756930814

Email: crittercare142@hotmail.com

Or find us on Facebook @crittercare142



City & Guilds

Leighton
Plumbing & Heating

Oil Boilers

Serviced & Repaired

01525 385250

Leighton-plumbing@ntlworld.com

Oftec Registered & insured

OAKSTONE

ARCHITECTURAL DRAWINGS AND PLANS

Oakstone Ltd specialises in design, drawing and building plans for:

- Planning applications
- Building Control approval
 - Residential
 - Commercial
 - Agricultural
 - Listed Building Consent

To arrange a FREE initial consultation please contact:
ash@oakstoneltd.com or call **07884 268079**

For more information about previous projects undertaken and what we do please visit:
oakstoneltd.com



LOOKING FOR A RELIABLE, TRUSTWORTHY GARAGE?

THEN YOU'VE COME TO THE RIGHT PLACE! WHETHER YOU NEED A SERVICE, MOT, TYRES OR REPAIRS, THEN WE HAVE BOTH THE EXPERTISE AND THE FACILITIES TO TAKE CARE OF YOUR VEHICLE.

- WE ARE PART OF THE 'APPROVED GARAGES' GROUP, WE CAN CARRY OUT SERVICING WITHOUT AFFECTING YOUR WARRANTY
- COLLECTION OF VEHICLE WITHIN 5 MILE RADIUS IF REQUIRED, LIFTS HOME FOR CUSTOMERS
- ALL WORK IS SENT TO YOU ON A DETAILED ESTIMATE
- VIA EMAIL OR PHONE CALL

£10 OFF MOT
WHEN BOOKED WITH A SERVICE WITH THIS LEAFLET



**AVOID TOWN TRAFFIC
WHEN VISITING OUR COUNTRYSIDE
LOCATION WITH PLENTY OF PARKING.
BRING YOUR DOGS TOO!**

01525 222 876

WWW.GENERAL-MECHANICAL-SERVICES.CO.UK
RECEPTION@GENERAL-MECHANICAL-SERVICES.CO.UK
1 HONEYWICK LANE, EATON BRAY, LU6 2BJ



A 'Bromance' at Appledown Rescue Kennels!



Meet Fergus and Sherman, two elderly best friends with very different stories. After his owner died, Fergus the Dachshund came to us so sad and confused he was unable to settle into a foster home. Meanwhile, severely neglected Sherman was found tied to a bench, requiring surgery to remove his teeth and a tumour. Like Fergus, his needs made finding him a home unrealistic. However, the two old boys soon became inseparable, and have taken up permanent residence at Appledown as part of our 'Kitchen Crew'. Now enjoying a new lease of life, they spend their days trotting around behind the scenes and keeping an eye on the staff! We think that all dogs, regardless of age, deserve to live their best life. Will you help us to care for dogs like Sherman and Fergus?

It's easy to make a one-off donation of £3 simply by texting APPLE to 70111, or donate via Paypal using the 'DONATE Support a Cause' option and search for Appledown Rescue. Donations by cheque are very welcome too!

Appledown Rescue & Rehoming Kennels
Harling Road, Eaton Bray LU6 1QY

E-mail:

appledown.kennels@btinternet.com

Website: www.appledownrescue.co.uk

Follow us on Facebook, Twitter & Instagram!

LUKE REYNOLDS PHOTOGRAPHY

**LOCAL PROFESSIONAL
PHOTOGRAPHER FOR HIRE.**
Weddings, Events,
Portraits, Products & Property.
Discounted offers on website
store.

WWW.LUKEREYNOLDSPHOTOGRAPHY.CO.UK
ENQUIRIES: 07792945283
EMAIL: REYNOLDSLUKE08@GMAIL.COM
EATON BRAY

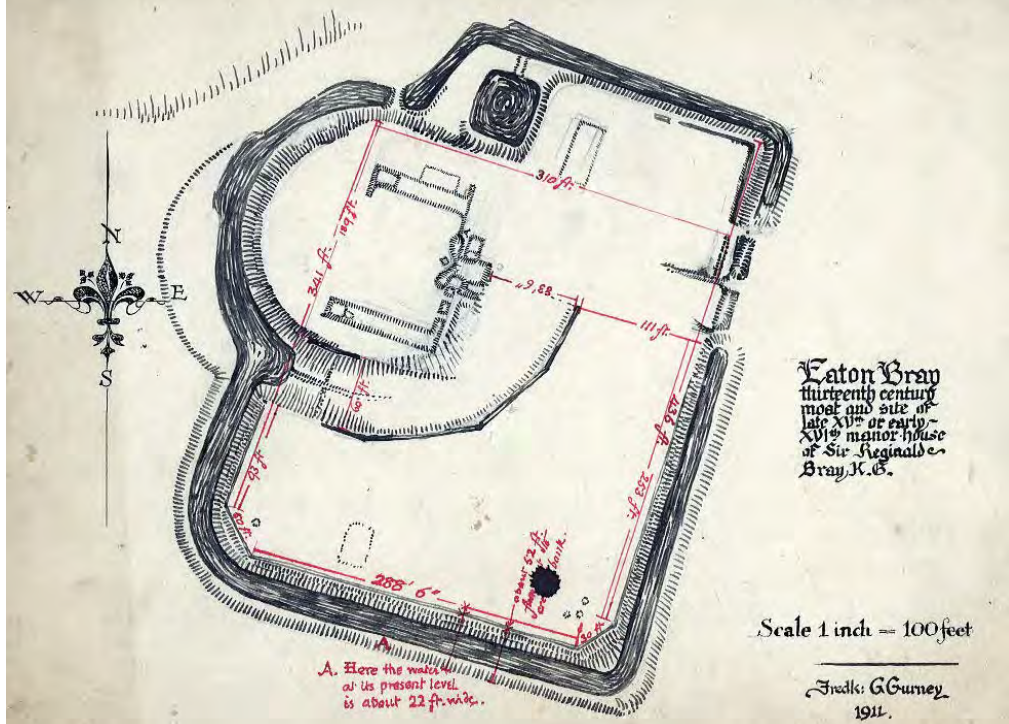


Eaton Bray History

Eaton Bray Castle (courtesy of the Bedfordshire Archives)

The castle earthworks drawn by Frederick Gurney in 1911

The recorded date of original construction is 1221.



Totternhoe Castle is well known, standing high above the surrounding countryside but Eaton Bray also had a castle. It stood west of the village in the angle between The Rye and Northall Road. As may be expected it was owned by the Lords of the Manor. Volume III of The Victoria County History for Bedfordshire was published in 1912 and states that the castle was built by William de Cantlowe in 1221 and was described by the Annals of Dunstable, written by chroniclers at Dunstable Priory, as “a serious danger to Dunstable and the neighbourhood”.

A particular of the manor made in 1273 describes the castle as a manor house inclosed with a wall and a moat with two drawbridges. There seems, in the manner of Norman castles to have been a large area inclosed by the wall (the outer bailey)

and a smaller area within this, also inclosed by a wall (the inner bailey). There may also have been a mound, or motte, on which the principal residence was built.

The hall had two chambers, a pantry and a buttery and the roofs were tiled. Also mentioned as being inside the inner bailey are: a great chamber; a foreign chamber (presumably for guests); a garderobe (a privy); a house for a larder used for a kitchen because there was no kitchen; a drawbridge opening out onto the deer park; a new chapel and a granary. The outer bailey contained stables with tiled roofs for sixty horses, a grange (usually meaning the manor house of a manor owned by a religious foundation but here, presumably, meaning a barn or something similar), cow houses, pigsties and other buildings which were all

thatched. Outside the walls were two gardens, one of three roods and the other comprising one acre. The deep park included woodland of twenty eight acres.

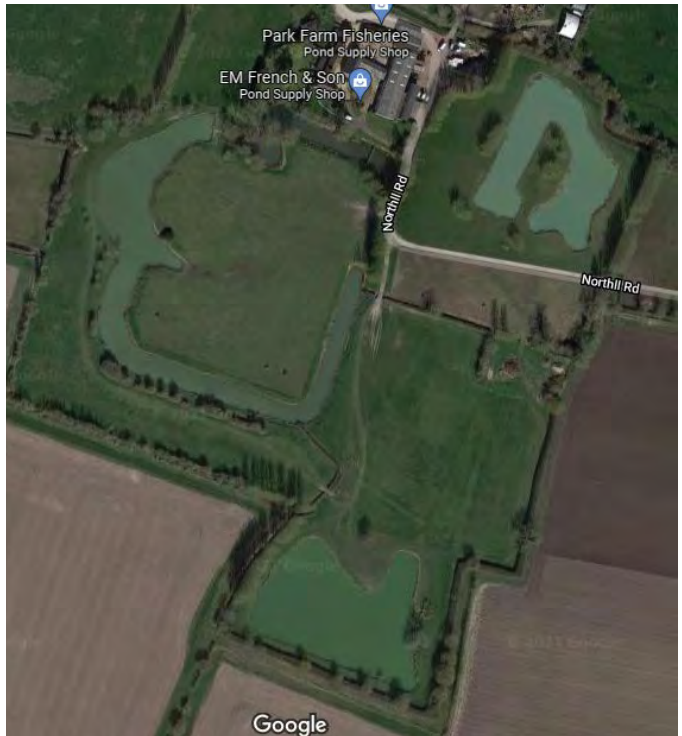
The castle is not mentioned after the 13th century and so may have had a short life of two or three generations. The Victoria County History states: "it is probable that the mansion house of the Bray family (who became Lords of the Manor in 1490) was rebuilt on the old site in the reign of Henry VIII. Part of this dwelling still remained in 1794, when it was taken down. Traces of the castle moat and foundations may still be seen in the parish, and persist in such place-names as Castle Field".

The Bedfordshire Historic Environment Record contains information on the county's historic buildings and landscapes.. The site of the castle is also an ancient monument, scheduled by the former Ministry of Works in 1958. The schedule notes that the moat around the site is "an exceptionally well preserved example of a large, double island type". These islands still retain the foundations of a number of structures, relating both to the original castle and the later manor house built on the site.

The outer enclosure surrounded by the moat measures 160 metres from north-east to south-west by 120 metres from north-west to south-east. The moat itself varies in width from 10 metres to 16 metres. The island within the moat stands about a metre above the top of the moat and is reached by a causeway measuring 40 metres across the north end of the south-eastern arm of the moat. The inner bailey, in the north-west corner of the larger island measures 60 metres in diameter. This island is 70 centimetres above the level of the moat and at this point the

ditch is between 20 and 35 metres wide.

The castle was replaced by a manor house in the late 15th or early 16th century. By 1675, when the then owner Sir John Huxley died, the manor was empty. Huxley's son, another John, undertook to repair the damage and a trust deed of February 1693 notes: "the manor house, where Sir John Huxley dwelt, has for many years been a considerable charge to repair and stands empty". The property was described as: "the manorhouse called Eaton Park House, with barns, stables, outhouses, gardens, orchards and ground within the outward moats or ponds which do encompass the same; together with the same moats or ponds which are now laid dry with little or no water; a dovehouse called the stone dovehouse in the outer yard between the malthouse and the great barn". The manor house was demolished in 1794 and by 1849 the site was clear of standing remains, the moated area being described as "park Gardens" in



Birds eye view of area showing the moat. Courtesy of Google Maps

the title map of that year.

The castle was surrounded by a deer park and this is mentioned in 13th century sources. The park was edged with a bank and ditch and comprised woodland and pasture. The schedule notes: "the construction of the deer park reflects a major change in land use, which may have involved the displacement of existing farming communities, evidence for which may survive in the buried land surfaces beneath the banks".

The earliest reference to the deer park is in 1241. In 1274 the park is described as extending over twenty eight acres. Richard Clifford, an officer of King Edward I (1272-1307) was accused of taking venison from the park after the death of Lord of the Manor Gilbert de Cantlowe. When

Frederick Gurney investigated the park in 1911 he found that the bank around the park, called the pale, was flanked by two ditches and was cut by an outlet for fishponds.

Fish were an important part of diet in the Middle Ages, particularly as the church laid down that meat could not be eaten on Fridays, resulting in that day becoming a day associated with eating fish instead. The fishponds at Eaton Bray lie 40 metres east of the moated site itself. One measures 28 metres north-south by 18 metres east-west and connects with a linear pond in its south-west corner. This second pond is 40 metres long and varies in width between 7 metres and 3 metres.



Dagnall Community Choir

Choir restarted after our long, enforced break on Monday 6th September. It felt quite emotional all singing together after so many months (were there actual tears in the eyes of some of the sopranos as the first chords of "Edelweiss" resounded around Dagnall Church?)

We rehearsed a selection of our favourite songs in preparation for the Poppy Prom, which is due to take place on Saturday 13th November at St Mary's Church, Eaton Bray. We may have been a little rusty at first... but choir leader Michelle was kind to us, and by the end of the evening, all those words and melodies and harmonies were coming back to us, and we are looking forward to the opportunity to perform in public in a month or so.

It was also wonderful to see familiar faces and to catch up with everyone's news. The choir is a social group as well as a musical ensemble, and so special thanks should be made to Stephen Holder, our Chairman, who has done a great job during the various lockdowns of keeping us all in touch with one another, and with the music that has

brought us together.

Every day, during the time that choir couldn't meet, Stephen has emailed a short message to all choir members, with a link to a piece of music that he'd selected for us to enjoy. The music has ranged from Mozart to Metallica, Beethoven to Bruce Springsteen, and has included several selections from one of Stephen's new found favourites, Norwegian singer Sissel Kyrkjebø. Back in March 2020, Stephen thought this would be an undertaking that he would continue for just a few weeks, maybe a month or two before life went back to normal, but other than a few days off over Christmas, he actually ended up sending emails every day for 18 months!! We have all really appreciated these daily "hellos", and his daily sign off, "keep well and stay safe."

For more information about the choir, please visit our website www.dagnall-community-choir.co.uk, or telephone 07443 037227. As always, we welcome new members, but at present we ask that you only attend if you have received two vaccinations against Covid-19 – the safety of everyone is our priority.

Eaton Bray Methodist Church



On the first Sunday in August, we welcomed Ivor Michelmore back to our Zoom service. His sermon on 'The Bread of Life' led us to consider our basic needs, ultimately recognising that we must develop utter confidence in God to provide for us in all circumstances. The following Sunday brought us Martin Wallis, who continued the same theme. Paul's words in the Letter to the Ephesians are still relevant to us today; we should trust God completely, looking after our fellow human beings with care and compassion. On the third Sunday, Roger Owers, another skilled preacher, brought this theme to its final conclusion; as we share bread and wine at the communion table, may we grow in spiritual understanding and accept that God is alive for each one of us every day. On the fourth Sunday we could not have a Zoom service but joined others in home worship using specially

prepared material. Our final Sunday service in August was led by our minister, Rev Nigel Bibbings, focusing on the need for us to honest about ourselves. Nothing is gained by identifying our flaws if we are not prepared to do something about them. Faith demands action.

A Warm Invitation

At the time of writing we are still meeting on Zoom. However, in October, when this edition of Focus comes out, we hope that we will be holding face-to-face services in our church again. Whatever the venue, you would be very welcome to join us. To confirm the situation, you can always ring our Minister, Rev Nigel Bibbings, on 01525-872026.

News from Dunstable Rotary Club

Dunstable Rotary President David Footitt had the great pleasure of presenting his chosen Charity of the Year with a cheque for £1,500 to Andy Lewis from East Anglian Air Ambulance. EAAA has been a real success story, and they now respond 24hrs a day 365 days a year. Andy told how the air ambulance had adapted during the global pandemic to carry covid patients, and relocate seriously ill patients to hospitals where they had capacity, or more suitable equipment.

The EAAA have also recently opened a brand new purpose built HQ with training facilities at Norwich. The second Air Ambulance flies from its base in Cambridge.

David said that the Air Ambulance is available to everyone. No-one pre-books the air ambulance!



Andy says "On behalf of East Anglian Air Ambulance I would like to thank the Dunstable Rotary Club for its generosity and continued support in the air ambulance charity.

The support of community organisations such as the Rotary Club help keep EAAA's critical care medical crews flying and saving lives."

Another example of the great work that Rotary achieves the world over.

Down the Lane

September is my favourite month. In the garden I love the autumn flowers – chrysanthemums, dahlias and michaelmas daisies which look glorious in the softer light of the season and remind me of childhood Harvest Festivals when I had a whole windowsill to decorate on my own. I would create a large flower



Cyclamen



From the flower farm

arrangement surrounded by piles of fruit and vegetables. The aroma of apples and flowers in the Church is a wonderful memory.

I enjoy growing my own flowers and foliage to use for flower arranging. Recently I visited a flower farm near Bedford to see its cutting garden and learn about informal floral arrangements. A huge variety of flowers grow in a beautiful walled garden so I was spoilt for choice and decided on shades of pink to go in my dark green vase. Weeping pear is a good substitute for eucalyptus and I didn't realise that I could use flowers like gaura and cosmos.

In the garden, the grass that was left to grow this year, to encourage the wild flowers, was difficult to cut when I decided it should go back to lawn. Next year it will be cut with the mower on its highest setting so that the flowers can still develop and there is cover for wildlife but the grass won't be hard work to manage. One of the plants I discovered was penny royal. My perennial corner, which I grew from seed, has been a great success. I am cutting it down now which will give small plants a chance to grow, and seed to set, before the winter. Next year its appearance will change as different plants predominate and more of the original seed, for other plants, germinates. I can see lots of cowslip and heartsease plants so the area will look very pretty in the spring.

The autumn cyclamen are flowering and soon the leaves of the spring ones will appear. Both are multiplying to give a pretty



Crab apple



Dahlia - Bishops' Children

display. I planted a crab apple this year which now has a crop of fruit that I hope that the birds will enjoy.

I grew some dahlias, variety Bishops' Children, from seed for my pots. At last they are flowering and attracting the bees. The flowers are single, in a variety of pinks, reds and oranges, with dark foliage. I will store the tubers so, next year, they should flower earlier. Growing with gaura they have created an eye-catching display.

✍️ Sally Taylor

Nigel's Thoughts



Dear Friends,

Over the years I have been quite a fan of the BBC series 'Who do you think you are?' In the programmes celebrities research and discover more about their ancestors down through the centuries – the roots from which they spring, it is fascinating.

When we were living in Derbyshire many years ago I was startled by a caller at our front door. Though in plain clothes he flashed his police identity card at me, and I instantly wondered what heinous crime I had unknowingly committed! "Look at the name" he suggested, and so I investigated the card. He turned out to be PC Malcolm Bibbings of Derbyshire Constabulary – a force which I eventually served for many years as a police chaplain. He was investigating his family tree and discovered another 'Bibbings' in Derbyshire when my name appeared in the local phone book. We discovered that we were indeed related, albeit distantly.

More recently after arriving in this area, I learnt that one of the earliest users of my surname, a Thomas Bibbins was to be found in

Edlesborough in around 1621.

Who knows he may even have been born or buried locally?

It's a small world. Today you are mostly likely to bump into a Bibbings in Devon, I was born in Plymouth myself.

Our particular family surname is apparently held by only one in every 27.7 million people, so we cannot exactly claim to be numerous!

Whatever our name, however well-known or uncommon, we are dearly loved, treasured and special to God.

In a favourite biblical psalm David writes "You know when I sit down and when I rise up; you discern my thoughts from far away... For it was you who formed my inward parts; you knit me together in my mother's womb... Such knowledge is too wonderful for me" (Psalm 139 verses 2, 13 and 6).

Thank God that we are all one human family, whatever our name, infinitely precious to our heavenly father God, and hopefully to one another.

God bless,

✍️Nigel



Eaton Bray W.I.

During the summer months, members have been meeting up for picnic lunches, which has been a good way of keeping in touch. We have had some sunny days for our gatherings.

Some of our members have been busy knitting and crocheting. All their efforts contributed to help with the yarn bombing initiative at Waddesdon Manor. Various trees will be covered with the knitting ready for the Christmas event at Waddesdon Manor. Our thanks go to Helen who took on the task of sewing all the required lengths together to fit round the trees and bushes. The finished products were an array of rainbow colours of our knitting.

We held an Afternoon Tea in aid of Breast Cancer on Monday 6th September. Members were encouraged to bring along a friend. We held a raffle to add to the fundraising for this Breast Cancer event.

Eaton Bray WI will be celebrating their 100th Birthday in November. Plans are being made to make this a very special event. Unfortunately we do not have any definite dates to return to our regular monthly meetings. We hope this will be in the near future.

The contact for Eaton Bray WI is: Margaret Jones on 01525 220991. If you are interested in joining our WI, please give Margaret a call.



Your local

GUTTERBUSTER

cleaning & repairing your gutters

01442 874540
07749 977997

adam@localgutterbuster.com

Laptop & Computer

Server, Printer, Apple, Setup, Repairs,
Data recovery, Internet, Wireless, Network,
Virus infection, Home/Office computer problems.

Services from £40.

Your local IT support, 7 days services, we visit you
No Fix - No Fee

Qualified, Experienced
PClaptoprepairs@gmail.com
01525 306316 – 07925 338435

MEETING PLACE AVAILABLE

Does your leisure group/voluntary organisation need premises for your regular meetings?

Edlesborough Methodist Church, centrally located on the corner of Cow Lane opposite The Green, has accommodation that might suit your purpose.

Please contact 01525 223093 for further details.



HWT Scaffolding

HWT Scaffolding is a local family run scaffolding company. Small enough to care, but large enough to deliver. We will never be beaten on price. For a free no obligation quote please contact Lee on 07902475826.



07902475826
Email: lee@hwtscaffolding.co.uk
www.hwtscaffolding.co.uk

All Trees & Hedges

Reliable & friendly service • Family run business
Competitive prices • Qualified advice • Fully Insured

Tree work undertaken

Tree felling • Precision dismantling • Crown reduction
Crown thinning • Crown lifting • Formative pruning
• Stump grinding • Stump removal
Deadwooding • TPO / conservation area work

Hedge work undertaken

Hedge reduction • Hedge planting • Hedge trimming
Shrub clearance • Hedge laying

Other Services

Fencing • Green Waste Recycling • General
Garden Maintenance • Tree Lighting • Logs / Kindling

CALL NOW ON:

07701 094 934
01525 220 823

E: info@alltreesandhedges.com

W: www.alltreesandhedges.com

Pampered Pups

Mobile dog groomers

Call to book an appointment

07394 672646

pampered.pups8@gmail.com

www.pamperedpupsuk.com

We come to you
No Mess
No Stress



Grooming Washing Drying Nail Clipping



BELLOWS MILL
Eaton Bray

Watermill Weddings
WEDDINGS & CIVIL PARTNERSHIPS



Available for intimate or large gatherings,
formal or informal weddings, vow
renewals, company away days or funerals.

For more information or to arrange a
viewing contact Rachael on 01525 220548
or email reservations@bellowsmill.co.uk

www.bellowsmill.co.uk

CALVI COLLECTIONS

REAL FURNITURE FOR REAL LIFE

Family run business who have been making furniture for people's homes for over 35 years.



High quality service coupled with one of the finest collections of individually crafted furniture made to order

VISIT OUR NEW WEBSITE OR DROP BY TO SEE OUR CREATIONS

Unit 12 Eden Way, Pages Industrial Park, Leighton Buzzard, LU7 4TZ

01582 663 673 · info@calvicollextions.co.uk · www.calvicollextions.co.uk



Plant & Tool Hire

Tel: 01525 795473

Mob: 07375 384612

www.experttoolhire.co.uk

FOR ALL YOUR NEEDS PLEASE CONTACT

craig@experttoolhire.co.uk

01525 795473

We are a local trustworthy and reliable hire company offering a variety of Equipment for Hire.

A High level of customer service - competitive prices and reliability.

20 Years Experience.

For Hire we can offer:

Euro Tower Aluminium Tower, Podiums
Folding Tower - for ease of transportation

Digger & Dumper Hire, Wacker plates

SL10 Genie Lifts, Mixers, Petrol Saws

Scaffold Boards - Trestles

Acros Strongboys...and more



CDM Builders Ltd 07984086029

GENERAL BUILDING
NEW HOMES
EXTENSIONS
CONSERVATORIES
ALTERATIONS
BRICKLAYING
GROUNDWORK
PATIOS

DIGGER AND/OR DRIVER FOR HIRE

With over 20 years experience in the building trade

All aspects of work undertaken by our own professional tradesmen to a very high standard

Please contact Clive for a free quotation

T: 01525 222605 M: 07984086029

Email: Clive.munt@hotmail.co.uk



...for all your pest solutions

Peter Tong
(RSPH Level 2)

01525 220653
07958 669706

Email: peter@nimbypest.org.uk
www.nimbypest.org.uk



Lisa Arch Home Styling

Transform your home with my Dunstable - based home makeover service — designer looks tailored to fit your taste and budget.

☎ 07528 220311

f Lisaarchhomestyling

✉ lisaarchhomestyling@outlook.com



iAchieve Tutoring

Louise-Emma Fabre
Director & Founder

SATs & 11+ Common Entrance
English French

07368 950083

iachievetutor@gmail.com



WHITE WATER

EXTERIOR CLEANING SPECIALISTS

Driveway & Patio Cleaning

"We use an innovative, biodegradable method that eliminates dirt & kills mould, blackspot & algae, sanitising the surface. The results last 4 to 6 times longer than pressure washing alone."

- We also clean:
- Conservatories
 - Decking
 - Windows
 - uPVC
 - Solar Panels

07738 434787 | 07807 973871

email: info@white-water.co.uk

www.white-water.co.uk



Come for Coffee at St Mary's, Eaton Bray

For a warm welcome and
a cheering cuppa
each month in
St Mary's Church
Eaton Bray
10.30am - midday



1st Saturday of each month
(except July - 2nd Saturday)



EVERGREEN GRASS²⁰²⁰

Britain's favourite artificial grass

www.evergreengrass2020.com

01525 304600

10 Year
Guarantee!

- Enjoy a lush green pile with a natural bouncy feel 365 days a year.
- No more mowing, weeding, feeding and watering
- No more mud and mess
- Dog, cat and children friendly
- No worn out or discoloured patches
- Just like real grass..... Only Better!!!



Senior Citizen Discount

For a **FREE** quotation or more information call your local office

01525 304 600

up to
50% OFF

www.evergreengrass2020.com

3 Summerleys, Edlesborough, Beds. LU6 2HR



To us, it's not just another funeral. We care for your loved ones as though they were our own.

NEVILLE. Because there is a difference.

DUNSTABLE

Globe House, 84/88 High Street South LU6 3HD

t: 01582 320290

e: dunstable@nevillefuneralservice.com

www.nevillefuneralservice.com



Coffee Tavern



Large Hall £6.00 per hour

Commitee Room £3.50 per hour

Large Hall & Commitee Room £8.00 per hour

Bookings 01525 220891

Stairlift, access ramp and free WiFi available

London Luton Airport

With an increase in aircraft in the area and in particular when the wind is from the East, we are getting some aircraft flying directly over the village to join the flight path into the airport. If you are disturbed by the traffic flying over the village, there is a complaints hotline number: 01582395382. This is an airport number where you can register your concerns. It is important to do this if we are to reduce these disturbances over our village.

If you need to complain about Heathrow flight noise the number is 0800 344 844. Email: noise_complaints@heathrow.com





A committee run playgroup set in Dagnall Village Hall for children aged 2 to school age

We operate five mornings a week from **9:15 - 12:15**



Ofsted Comments

- Staff are consistently kind and caring which supports children to develop confidence and resilience
- Teaching is consistently good and children's safety is given the highest priority
- Children learn good manners and know how to treat each other with respect



If you think your child would be happy here please phone our Playgroup Leader, Ann Tobin on 07816 358 342
www.dagnallunderfives.co.uk



- Residential Mortgages
- Buy to Let
- Commercial Mortgages
- Equity Release
- Life Assurance
- Local Knowledge
- Bespoke Personal Service
- Fee Free Advice

Contact:

emma@everymortgagesolution.co.uk

Tel: 01525 222928

www.everymortgagesolution.co.uk

Every Mortgage Solution Ltd is authorised and regulated by the Financial Conduct Authority, Registration Number 837504. Company registration No. 04351192

YOUR HOME MAY BE REPOSSESSED IF YOU DO NOT KEEP UP REPAYMENTS ON YOUR MORTGAGE.



A SIMS
ELECTRICAL SERVICES

FREE QUOTES

DESIGN

INSTALLATION

TESTING

FRIENDLY & AFFORDABLE SERVICE

~ 07849 958200 ~
aaronsimsey@yahoo.com



OUZEL
CONTRACTING

Providing quality, experienced horticultural services to the villages

Services include:

- Year-round Garden Maintenance
- Mowing and Lawn Care
- Hedge Cutting
- Bed and Border Maintenance
- Pruning, including Roses and Wisteria
- Planting Services
- Weed Control
- Leaf Clearance

Fully insured, fully qualified with 20 years' experience
Licensed waste carriers

For a free quote call Kieran on
07800 888120
www.ouzelcontracting.co.uk



PARAMOUNT

PLUMBING & HEATING

- BOILER INSTALLATIONS WITH A 10 YEAR WARRANTY
- BOILER SERVICE & MAINTENANCE • CENTRAL HEATING SYSTEMS
- BATHROOM INSTALLATIONS • POWER FLUSHING
- LANDLORD SAFETY CERTIFICATES

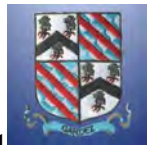
PLEASE CONTACT US FOR A FREE QUOTATION



T: 07917 054045
E: INFO@PARAMOUNTPLUMBING.CO.UK



Eaton Bray Cricket Club



It's been a cracking season with the 1st XI becoming 2nd Division Champions of the FCCL and the Sunday XI gaining promotion to Division 4 in the Beds Sunday League.

Results

July 10th Eaton Bray 1st XI 231-8 Ben Cullen 103. Printers 175 ao. Eaton Bray won by 56 runs.

July 10th MK Stallions 192-9 Aaron Gauntlett 3-46. Eaton Bray 2nd XI 168-9. MK Stallions won by 24 runs.

July 17th Eaton Bray 1st XI 266-6 Andy Norris 132 Lee Gauntlett 54. New City 173-9 Ollie Harris 4-38. Eaton Bray won by 93 runs.

July 17th New City 101 ao Peter Robinson 3-22. Eaton Bray 2nd XI 103-5. Eaton Bray won by 5 wickets.

July 18th Caddington 161 ao Euan Palmer 3-35. Eaton Bray Sunday XI 162-4 Peter Robinson 63 Jaco Jacobs 60 no. Eaton Bray won by 6 wickets.

July 24th Luton Caribbean 86 ao Aaron Gauntlett 4-4. Eaton Bray 1st XI 88-2. Eaton Bray won by 8 wickets.

July 24th Eaton Bray 2nd XI 312-4 Ben Cullen 77 no Peter Robinso 63 no Jack Cullen 61 Russell Bennett 53. Newport Pagnell 107 ao Ian Jones 4-32 Eaton Bray won by 205 runs.

July 31st Newport Pagnell 160-8 James Flecknell 3-19. Eaton Bray 1st XI 161-4 Paul Harris 76 n/o Jack Cullen 50. Eaton Bray won by 6 wickets.

July 31st Westcroft 166 a/o Sri Kalai 4-25 Dave Emmerson 4-45. Eaton Bray 2nd XI 130 a/o. Westcroft won by 36 runs.

August 1st Dunstable Town 91 a/o Ollie Harris 3-22. Eaton Bray Sunday XI 92-4. Eaton Bray won by 6 wickets.

August 7th Eaton Bray 1st XI 185-9. Aspley Guise 188-5 Ethan Edwins 3-44. Aspley Guise won by 5 wickets.

August 7th Eaton Bray 2nd XI 140-8. MK Warriors 143-4. MK Warriors won by 6 wickets.

August 8th Eaton Bray Sunday XI 99 a/o. Harrold 58-3. Harrold won by 7 wickets. Rain

affected revised target.

August 14th Eaton Bray 1st XI 207-6 Ethan Edwins 58. M K Warriors 190 a/o James Flecknell 7-22. Eaton Bray won by 17 runs.

August 14th Eaton Bray 2nd XI 211-8 North Crawley 152 a/o Ian Jones 4-17. Eaton Bray won by 59 runs.

August 21st Eggington 251 a/o Euan Palmer 5-41. Eaton Bray 1st XI 219-8 Euan Palmer 60 n/o. Eggington won by 32 runs.

August 21st Eggington 200 a/o Dave Emerson 4-26. Eaton Bray 2nd XI 87 a/o. Eggington won by 113 runs.

August 22nd Eaton Bray Sunday XI 151 a/o Hamd Waheed 80 n/o. Bedford 134-8. Rain affected revised target. Match tied.

August 28th Eaton Bray 1st XI 265-4 Lee Gauntlett 85. Cranfield 252 a/o Sri Kalai 6-35 Eaton Bray won by 13 runs.

August 28th Milton Bryan 223-5. Eaton Bray 2nd XI 145 a/o. Milton Bryan won by 78 runs.

August 29th Eaton Bray Sunday XI 138 a/o Peter Robinson 71 n/o. Caddington 139-7 Jamie Osborne 4-21. Caddington won by 3 wickets.

Eaton Bray Cricket Club are always on the hunt for new players of any age ability or gender. We run 2 senior teams in the FCCL on Saturdays and 1 in the Beds Sunday League. We also have a side in the newly formed Village T20 League played midweek. The club have a very good junior section with 6 teams at age group U9 2xU11 2xU13 and u15.

The club would like to thank our sponsors Meadow Marquees, ECL Howard Watson Smith LLP, Topps Tiles, SMSS Ltd, Houghton Insurance and the Focus Magazine for their support during the 2021 season.

If you would like to be part of a progressive family friendly club please contact us via Facebook or Twitter @EatonBrayCC.

Please enjoy your cricket with Eaton Bray in 2021.

PLUMBING & HEATING ENGINEERS

OUR SERVICES INCLUDE:

- General Plumbing
- Boiler Servicing / Breakdowns / Aga & Rayburn Servicing
- Full Boiler Installs & System Upgrades

We work on Oil, LPG & Natural Gas - We are members of Gas Safe & OFTEC

CONTACT JUSTIN

Mobile 07770 918101

Office 01525 220262

Email justin@prmechanical.co.uk

WWW.PRMECHANICAL.CO.UK

All major credit cards accepted



KCS Services

**Cleaning Floor Specialists
Carpets and Upholstery**

Professional Window Cleaners

Reach and Wash System

Jet Washing

Commercial & Domestic

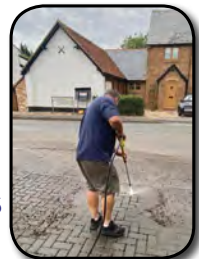
25 Years Experience

Jeremy Long

07798 650895

01525 797045

Jerrylong2601@gmail.com



Scan the code below to visit our Website



Get in touch - @KCSServices_

What to do in the Garden in October

Courtesy of www.thompson-morgan.com



October is a beautiful month of autumnal colours and first frosts. Crisp, blue-sky days are the perfect time to tidy up and cut back in the garden. If you grow fruit and veg, there's still plenty to harvest and store for the cold winter months ahead.

Timely tips



Here are some of the main jobs for the month of October:

- If your greenhouse is fairly empty, now's a good time to clean and disinfect it. This lets in more light, and prevents pests and diseases from over-wintering.
- Protect half-hardy plants with fleece or bring them into a frost-free greenhouse.
- Sweep up any fallen leaves that harbour fungal spores and provide ideal hiding places for slugs and snails. Use them to make leaf mould for the garden.
- Lift and divide any overcrowded herbaceous perennials whilst the soil is still warm.

In the flower garden



- Lift dahlia tubers, begonia tubers and gladioli corms to store over the winter months. Remove any dead foliage before storing them.
- You can take hardwood cuttings from

deciduous shrubs now.

- Prune rambling and climbing roses once they've finished flowering, and tie in the stems before autumn winds cause damage.
- Clear up fallen rose leaves to prevent diseases such as black spot from over-wintering. To avoid the spread of damaging fungi, don't compost the leaves.
- Clear overhanging plants from pathways to maintain access around the garden.
- Cut back perennial plants that have died down. Alternatively leave the dead foliage in place to shelter friendly wildlife.
- After tidying borders, mulch with bark chips, well rotted manure, leaf mould or spent mushroom compost to insulate plant roots for the winter and keep weed growth in check.
- This month is the ideal time to plant hedges and move trees and shrubs.

In the vegetable garden



- Finish harvesting peas and beans. When they've finished cropping simply cut the plant away at ground level, leaving the roots in the soil. These crops fix nitrogen which is slowly released into the soil as the roots break down.
- If you plan to grow peas and beans next year, start preparing the site by digging trenches and filling with manure or kitchen waste.
- Harvest pumpkins and squashes before the first frosts. They quickly turn mushy if left outside!
- When you harvest your cabbages, leave the root in the ground and make a cut across the stem to encourage a flush of

smaller leaves.

- Hang any tomato plants and pepper plants with green fruits upside down indoors to ripen.
- Protect autumn cauliflower heads, like 'White Step' F1 hybrid, from frost by wrapping the outer leaves around them and securing them with string. Alternatively use a cloche or fleece.
- Cut back yellowing asparagus foliage to within 5cm of the ground.
- Reuse old grow bags by cutting away the top and sowing late salad crops. Cropping can be extended into winter if grown under glass, cloches or inside polytunnels.

In the fruit garden



- If you haven't done so already, cut back the fruited canes of your summer fruiting raspberries, leaving the new green canes for next year's crop. Tie in next year's raspberry canes to plant support wires or fencing.
- Move citrus trees indoors to a bright, frost free position (4-12°C) away from cold draughts and radiators. Reduce watering in winter but don't let the plant dry out completely.
- Clear the straw from around the base of strawberry plants to increase ventilation. Shear back old foliage to encourage fresh new growth.
- Divide congested clumps of rhubarb by digging up and splitting into several pieces with a spade. Re-plant the healthiest looking pieces.
- To test when apples are ripe, gently lift them in the palm of your hand or give them a gentle pull - they should come away easily.
- Remove any diseased fruits from branches

or the ground so they don't infect next year's crops.

- Wrap grease bands around the trunks of apple trees to trap winter moth females whose caterpillars shred spring flowers.
- Remove the netting from fruit cages to allow birds to catch and eat any pests that are lurking there.
- Apply a winter wash to the trunks and branches of fruit trees to kill off overwintering pests.

In the greenhouse

- If you haven't done so already, remove any greenhouse shading to allow as much light in as possible.
- Move tender plants into the greenhouse to protect them from early frosts. Make sure that there's enough space between to keep them well ventilated and reduce the risk of disease.
- Check any plants which you're bringing inside for pests like aphids.
- Continue to remove any fallen or dead plant material to keep the growing area free of fungal diseases.
- Set up your greenhouse heater in case of early frosts.

Looking after your lawn

- Clear up fallen leaves regularly to allow light to the grass.
- A last mowing can be made this month before leaving your lawn for the winter.
- Recut any lawn edges if needed. Install lawn edging to make future maintenance easier.
- Aerate your lawn with a garden fork to avoid waterlogging and compaction over winter.
- Rake any thatch from the surface and repair dead patches. There's still time to lay fresh turf if required.

Other jobs about the garden

- Reuse spent compost from annual container displays as a mulch on the garden.

- Create compost bins for collecting fallen leaves and dead plant material.
- Collect leaves up for making leaf mould as a soil conditioner. Oak, alder and hornbeam will rot down in a year, but beech, sycamore, horse chestnut and sweet chestnut take a couple of years to compost.
- Start preparing a bonfire with twigs and prunings - cover them with plastic so they remain dry for better burning later. (Be sure to check for hedgehogs before lighting your bonfire)
- Net ponds to prevent leaves falling into them. If you need to clear pond weed, lay it next to the pond for a day to allow wildlife to escape back to the water.
- Clean out water butts and let the autumn rains refill them. Install a new water butt ready for next year.
- If the soil is dry, give your garden one last good watering before the ground freezes.
- Use the last of the dry weather to paint sheds and fences with preservatives before the winter arrives.



- Build a cold frame to protect young plants from extreme winter weather.
- Check stored onions and garlic and remove any rotting bulbs immediately. The neck of the bulb is usually the first area to rot. Use onion bags to improve air flow.
- Check stored potatoes and remove any that are rotting. Use hessian sacks to store your potatoes as this allows the crop to breathe.
- Make time to give evergreen hedges a final trim before the bad weather sets in, so they look neat and tidy for the winter.
- Once plants are dormant, it's a good time

to lift and relocate any that you want to move.

- Raise pots off the ground for the winter with bricks or 'pot feet', to prevent waterlogging.
- Invest in bird baths and bird feeders this autumn. Birds are a gardener's friend and keep pests down.

From your armchair



- Take stock of this year's garden and make a few notes or sketches for next spring. You'll be surprised how useful these are when you start ordering seeds and plants for next year!
- Take snapshots with your camera or phone of where herbaceous plants are located before they die back so you don't damage their roots during a winter dig.
- Capture images of borders you'd like to replicate, or areas of the garden that need improving. Start a photo diary to record your garden's journey.
- Place online orders for fruit trees, fruit plants and hardy perennial plants - October to spring is the ideal time to plant them.



**Thompson
& Morgan**

Experts in the garden since 1855

Information courtesy of
www.thompson-morgan.com



www.eblions.co.uk

Come and play fun team football within our village community

Our coaches are FA Qualified and CRB checked

EB Lions your local youth football club are looking for keen boys and girls from ages 4 to 17 to join our friendly and inclusive club based in and around Eaton Bray, Edlesborough, Dagnall, Kensworth, Slapton, Totternhoe and the surrounding area. We have many teams and over 200 players playing exciting team sport! We welcome new players at any age group to start playing football within our village community. We are specifically looking for players for our U11 (Year 6), U12 (Year 7), U13 (Year 8), U17, U18, U18 girls (Years 11-13), Womens (Age 16+ Sunday). Please get in touch if you want to play, we have teams at most age groups. Contact us at enquiries@eblions.co.uk.

Halloween Pumpkin Cake

Ingredients

For the cake

300g self-raising flour
 300g light muscovado sugar
 3 tsp mixed spice
 2 tsp bicarbonate of soda
 175g sultanas
 ½ tsp salt
 4 eggs, beaten
 200g butter, melted
 zest 1 orange
 1 tbsp orange juice
 500g (peeled weight) pumpkin, grated



For drenching and frosting

200g pack soft cheese
 85g butter, softened
 100g icing sugar, sifted
 zest 1 orange and juice of half

Method

STEP 1 - Heat oven to 180C/fan 160C/gas 4. Butter and line a 30 x 20cm baking tin with baking

parchment. Put the flour, sugar, spice, bicarbonate of soda, sultanas and salt into a large bowl and stir to combine. Beat the eggs into the melted butter, stir in the orange zest and juice, then mix with the dry ingredients till combined. Stir in the pumpkin. Pour the batter into the tin and bake for 30 mins, or until golden and springy to the touch.

STEP 2 - To make the frosting, beat together the cheese, butter, icing sugar, orange zest and 1 tsp of the juice till smooth and creamy, then set aside in the fridge. When the cake is done, cool for 5 mins then turn it onto a cooling rack. Prick it all over with a skewer and drizzle with the rest of the orange juice while still warm. Leave to cool completely.

STEP 3 - Give the frosting a quick beat to loosen, then, using a palette knife, spread over the top of the cake in peaks and swirls. Keep the cake in the fridge then take out 30 mins or so before serving. Will keep, covered, for up to 3 days in the fridge.

Courtesy of www.bbcgoodfood.com

Dagnall Weather Station (AONB)

Weather Conditions for August 2021

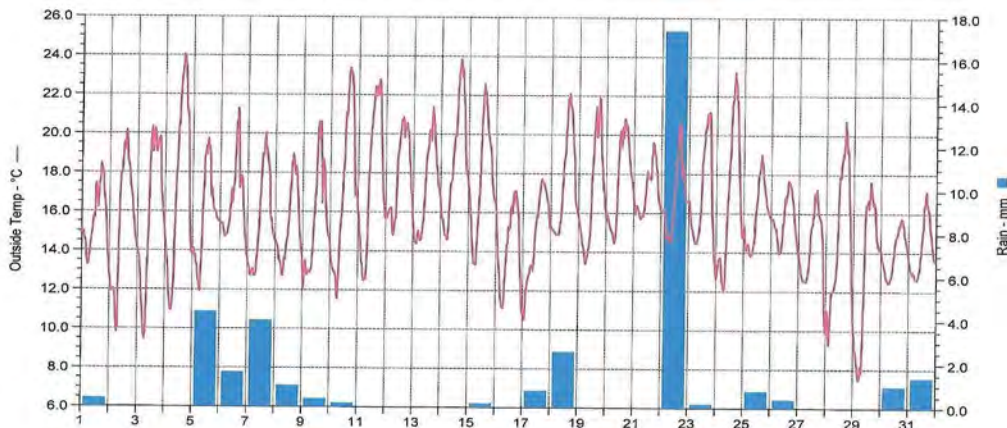
Elevation: 450 ft - Latitude: 51° 50' 13" North - Longitude: 0° 33' 34" West



August was a disappointing month and almost felt like November under grey and cloudy skies. We did have some sunny spells and temperatures rose to a high of 24.7°C on the 4th. There were sixteen days when the temperature was above 20°C, although only six above 22°C. August is usually a quiet month, and often wet, but this year it was dry with 36.8mm of rain, which is only 55% of the average rainfall – compared to August last year when we had 174.6mm! Rain was recorded on sixteen days, with eleven of them less than 2.0mm and some just 0.2mm. The month ended with the temperature dropping and further showers.

	High	Date/Time	Low	Date/Time
Temperature:	24.7°C	4 August 16.30	7.4°C	29 August 05.30
Mean Temperature	16.1°C			
Dewpoint:	17.3°C	12 August 14.00	6.4°C	29 August 04.30
Humidity:	99%	13 days August	44%	4 August 15.00
Barometer:	1031.2 mb	31 August 23.30	993.9 mb	7 August 14.30
Wind Speed	31 mph SSW	6 August 12.30	Months avg.	5.1mph
Wind Chill:	23.8°C	14 August 17.00	7.9°C	29 August 04.30
Dominant Wind:	NNE			
<u>Rainfall</u> * T = total rain days and moisture. R = Actual rain				
*Rain Days:	16(T), 16(R)	Wettest Day 22 August	17.4 mm	0.685 ins
Monthly Rain:	Total	August 2021	36.8 mm	1.45 ins
Yearly Rain:	Total	8 Months	520.09 mm	20.48 ins

August 2021 Temperatures and Rain Fall



For weather data 24 hours a day, updated every 15mins, this site forecast and much more, visit: www.dagnallweather.co.uk and http://bit.ly/weather_dagnall. If anyone has a question, comment or wishes to contact me please email: david@dagnallweather.co.uk or telephone: 01442 843883. Dagnall weather now has an app for your iPad & iPhone! Just go to the apple store, search for Wunderstation and follow the instructions to Dagnall Weather Station. Now updated every minute.



Salvation Sound

Eaton Bray Salvation Army

'Thank You'



'Thank you!' - two little words, but how much do we appreciate these words said to us for something that we have done, perhaps a birthday present, card, telephone call - the list is endless.

We also like to say thank you to each other. We appreciate each other for our friends friendship, our families whom we love now more than ever since the pandemic.

It is wonderful to share in fellowship, to be with our families as for many it has not been possible to be with them over the last eighteen months.

At this particular time of the year when we see the combine harvesters in our fields and see the harvest being gathered in, again we say thank you to the farmers and workers who diligently have sown the seed, taken care of their crops, and now are reaping the harvest. This is a special time of the year when there will be many Harvest Festivals and celebrations saying thank you to God for another good year of plenty.

We are mindful that this is not the same in every country where crops sometimes fail, where there is not enough food to feed everyone. We have so much to say thank you for and we must never take for granted all the bounty and blessings that God showers upon us each day.

The Psalms in The Old Testament continually resound with thankfulness of praise to God for all his goodness and mercy and grace and forgiveness.

I will bless the LORD at all times; his praise shall continually be in my mouth. (Psalm 34:1)

O Come, let us sing for joy to the LORD; Let us shout joyfully to the rock of our salvation. Let us come before His presence with thanksgiving; Let us shout joyfully to Him with psalms. For the LORD is a great God, And a great King above all gods. (Psalm 95: 1-3)

Throughout this pandemic God has been with us through illness and suffering, through laughter and pain. God has never left us and will continue to walk on this journey with us every day.

There is a song that comes to mind that speaks of our thankfulness to God for everything and I will leave with a couple of these verses to remind us of what God has done and continually is doing for us each day.

- | | |
|---|--|
| 1. Thank you for every new good morning
Thank you for every fresh new day,
Thank you that I may cast my burdens
Wholly on you. | 2. Thank you for every friend I have, Lord
Thank you for everyone I know,
Thank you when I can feel forgiveness
To my greatest foe. |
| 3. Thank you for leisure and employment
Thank you for every heartfelt joy,
Thank you for all that makes me happy
And for melody. | 4. Thank you for grace to know your gospel
Thank you for all your Spirit's power,
Thank you for your unfailing love
Which reaches far and near. |

(Martin Gottthard Schneider)

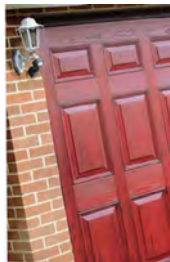


Premier Garage Doors & Gates



Quality Garage Doors

- ✓ Superb choice of designs in steel, timber and fibreglass
- ✓ Any size door made to your requirements
- ✓ Large selection of spares & fast repair service available
- ✓ New or existing doors converted to automatic
- ✓ Professionally fitted by own expert craftsmen
- ✓ Prompt free estimates & advice
- ✓ We cover all areas



(EST 1984)



Door & Hardware
Federation

raising standards



Unit 7, Sparrow Hall Farm, Leighton Road, Edlesborough LU6 2ES

01525 220212

www.premiergaragedoors.co.uk



JANES FLOORING

Carpet

Vinyl

Laminate

LVT

Karndean



Need new carpets or flooring for your home?
Then let JANES FLOORING help you with the right
advice, product and colours with a perfect price,
So you've no need to go anywhere else..!

FREE ESTIMATES

BORROW SAMPLES

FULLY FITTED SERVICE

UPLIFT & DISPOSAL

MOVING OF FURNITURE

4-8 High Street Edlesborough LU6 2HS tel: 01525 220208