

FOCUS

Remembrancetide
24th Oct to 7th Nov

November 2020

The local village magazine just for Us!
Eaton Bray, Edlesborough, Northall & Dagnall
Focus is online at www.thefocusmagazine.co.uk

The White Horse *Eaton Bray*

Market Square
Eaton Bray
Beds
LU6 2DG
01525 220 231
www.eatonbraypub.co.uk



From the horse's mouth

*No mask, no entry, no exceptions, no confusion
(masks may be removed when seated at your table)*

*Every precaution has been taken to ensure
your safety and the safety of our staff*



In these uncertain times, we look forward to seeing you whenever you're confident enough to visit

*Eat, Drink and relax
at The White Horse*

**The Salvation Army
Booth Place**



Sunday

Footprints (Sunday School) 9.45 - 10.45am
(Term time only)

Morning Worship 11am

Tuesday

Coffee Morning 10 - 11.30am
(Alternate weeks)

Wednesday

Home League 2.30 - 3.30pm
(Ladies meeting but all welcome)

Champion's Club (Term time only)
5.30-6.30pm (Ages 5 to Year 5)
6.45-7.45pm (Year 6 and above)

Thursday

Girls' Night Out
(1st Thursday of the month) 7.45pm

Ladies Fellowship
(Last Thursday of the month) 7.30pm

**For further details please contact us on
01525 222087 or email
eaton.bray@salvationarmy.org.uk**

**The Focus
Magazine
Committee**

Editor: Sally Siddons

34 Wallace Drive, Eaton Bray 221733

Email: sallysid@hotmail.com

Dagnall Representative: Richard Bamford
31 Dunstable Road, Dagnall 01442842344

Circulation Manager: John Plater

41 Church Lane, Eaton Bray 221095

Treasurer/Leaflet Enquiries: Ken Coates
10 The Nurseries, Eaton Bray 220868

Business Advertising: Sally Taylor

Butler's Folly, South End Lane, Northall
LU6 2EX 01525 221576

advertising@thefocusmagazine.co.uk

Design and Layout: Tracey Moren
(Moren Associates Limited) 01525 229695

Printed by: PRIORITY Press
Dunstable 01582 699851

Copy for publication to the Editor by the

10th of the month

Focus accepts no responsibility as to the accuracy or content of any advertising or articles published in 'this' magazine, neither do they reflect the opinion of members of the Committee.

© Articles published in Focus may not be reproduced without permission.

December Focus will be a joint issue for December & January. Don't forget to send in your December & January entries by 10th November

Kindly Note

If the event you wish to advertise falls in the first week of the month, it is advisable to get the details into Focus a month earlier. The magazines are not delivered from the printers until the first of the month, therefore it takes a few days for them all to be circulated throughout the village.

✍️ Editor

**NORTHALL BAPTIST
CHAPEL**

Chapel Lane, Northall

(just beyond the 30 speed limit signs on the road towards Leighton Buzzard)

Everyone is welcome to our Sunday worship each week between 11am and 12.30pm including tea/coffee and time to talk together.

For more information contact:
John Hazell 01525 218142

Email northallchapel@btinternet.com

Web: www.northallbaptistchurch.org

There has been a Baptist Chapel in Northall for more than 200 years. Today we continue to seek to worship God, serve him in our daily lives and support and encourage one another in the difficult and the joyful times.

Focus is online at www.thefocusmagazine.co.uk

Village Diary November 2020



Weekly

- Mon-Fri (term time) Eaton Bray Pre-school, Eaton Bray Lower School, 01525 220468
- Mon-Fri (term time) Dagnall Under 5's, Dagnall Village Hall, 9.15am - 12.15pm, Mrs Ann Tobin 07816 358342
- Mon-Fri (term time) Edlesborough Pre-School, Edlesborough School, 01525 220431
manager@edlesborough.bucks.sch.uk
- Mon-Thu (term time) Totternhoe Pre-school, mornings, Totternhoe Lower School, Michelle Urbanowicz on 01582 668841
- Mondays Pilates, 10.45am, Totternhoe Memorial Hall, Lisa: 07832 230774
- Mondays Dagnall Community Choir, All Saints Church 7.45 – 9.45pm
- Mondays (term time) Movement and exercise classes with a dance flavour, Northall Village hall 2-3.30. Contact Jan 01442 864271.
- Mondays Curtain Call Youth Theatre 5-7.30pm, Eaton Bray Village Hall, Gavyn 01525 220525
- Mondays Curtain Call Theatre Group - 7:30-10:30pm Eaton Bray Village Hall, Sheila - sdtwinkletoes@yahoo.co.uk
- Mondays KFPA ISTD Classical Ballet classes, 3+yrs, 4.15pm, Edlesbrough Memorial Hall, www.kfpa.co.uk
- Mondays Cubs (8-10 ½ years old), 6.30pm - 8pm, 1st Eaton Bray & Edlesborough Scout Hut, High Street, Edlesborough. Contact Liz Coates 01442 842550
- Mondays Yoga, 6:45pm, Edlesborough Memorial Hall, contact 07837 727302
- Mondays Barre, 8pm, Edlesborough Memorial Hall, contact 07837 727302
- Tuesdays Pilates, 10-11am, Eaton Bray Village Hall, Nicky Roussou 07861 162680
- Tuesdays Totternhoe Baby & Toddler Group, 9.30-11.30am, St. Giles Church Hall, Ruth Allen, 01525 222468 or 07796 265174 or email ruthallen002@gmail.com
- Tuesdays Tap & Ballet Classes, JoAnn Latus School of Dance, 4-8pm, Eaton Bray Village Hall, 07800 518654
- Tuesdays Beginner's Boxercise, 6-7pm Dagnall Village Hall, Josh Thompson 07456 574405 or jtpinfo@gmail.com
- Tuesdays Coffee Morning, Bring & Buy, Table Top Sale, 10-12noon, Salvation Army Hall, Booth Force, Eaton Bray
- Fortnightly Pilates, 8pm, Northall Village Hall, Lisa: 07832 230774
- Wednesdays Northall & District Age Concern Wednesday Club, 10am - 3pm, Northall Village Hall, Contact Anna on 07854 230243
- Wednesdays Caterpillars Baby and Toddler Group 10am to 11:30am, Grace Baptist Church, Moor End, Edlesborough, £1 per family unit, Contact Alister 07572 395687
- (term time) Pilates 6.45 & 7.45pm, Dagnall Village Hall, Andrea on 07855 138005 or andrea@naturalpilates.co.uk
- Wednesdays Art of Ju Jitsu martial arts class, Eaton Bray Village Hall, 7 -7.45pm ages 6-15yrs
- Wed (term time) Art Courses, Whipsnade Village Hall, 9.30am – 12.30pm. Lorna Moore 07896 619660
- Thursdays Yoga, Northall Village Hall, 11.30am-1pm 01525 377542
- Thursdays Jazzercise, 9.30-10.30am, Eaton Bray Village Hall, Angela Veryard, 01525 715208
- Thursdays KFPA Street dance classes 4+yrs 4pm, Edlesborough Memorial Hall, www.kfpa.co.uk
- Thursdays Tae Kwon-do, Dagnall Village Hall, 5.45-7.30pm 07813 755785
- Thursdays Clubbercise 7.30 - 8.30pm. Eaton Bray Hall - Gina Flitton 07846421756
- Thursdays Beavers (6 to 8 years old), 6.15-7.30pm, 1st Eaton Bray & Edlesborough Scout Hut, High Street, Edlesborough. Contact: ebebeaverleader@ebescouts.co.uk
- Thursdays Explorers Scouts (14-18 years old), 8pm-9.30pm, 1st Eaton Bray & Edlesborough Scout Hut, High Street, Edlesborough. Contact Simon Betts, lionheartesu@hotmail.co.uk
- Thursdays Intermediate Boxercise, 7.30-8.30pm, Dagnall Village Hall, Josh Thompson 07456 574405 or jtpinfo@gmail.com
- Thursdays Eaton Bray Methodist Church Social Afternoons, 2 - 4pm, All Welcome

Please get in touch with the relevant organisation to check if sessions are running

Village Diary November 2020

Thursdays	Retro Line Dance Class. 11.15am to 12.45pm. Eaton Bray Village Hall. Beginners welcome. www.jukeboxjunction.co.uk info@jukeboxjunction.co.uk 07864212171
Thursdays	Mixed Ability Yoga Class, 11.30am to 1.p.m. Northall Village Hall, Contact Dee Lock on 01525 377542
Fridays	Keep Fit class, Edlesborough Memorial Hall 10 - 11am
Fridays	Tap & Ballet Classes, JoAnn Latus School of Dance, 4-8pm, Eaton Bray Village Hall, 07800 518654
Fridays	Stay & Play toddler group, 'Musical Monkeys' at the Eaton Bray Village Hall, 10-11.30am, £4.50 for one adult and child, £1 for extra children/adults, 0-6 months free
Fridays	Scouts, 10 ½ to 14 years old), 7.00-8.30pm, 1st Eaton Bray & Edlesborough Scout Hut, High Street, Edlesborough. Contact Mark Owen, 07899 892344, ebescoutleader@ebescouts.co.uk
Fridays (term time)	"Little Luvvies" baby ballet classes 10am-11.30am. Contact Emma Whittemore on 01525 376124
Fri (term time)	Art Courses, Whipsnade Village Hall, 9.30am – 12.30pm. Lorna Moore 078 9661 9660
Saturdays	Jazzercise, 9.30-10.30am, Eaton Bray Village Hall, Angela Veryard, 01525 715208
Saturdays	KFPA Musical Theatre classes 4+yrs www.kfpa.co.uk , 10am, Edlesborough Memorial Hall
Saturdays	Bootcamp Fitness, 9-10am, Dagnall Recreation Ground, Josh Thompson 07456 574405 or jtptinfo@gmail.com
Sundays	Sunday Worship at 11am and 6pm Edlesborough Baptist Church, Moor End, LU6 2FL Contact Alister on 07572 395687
Sundays	Karate for kids & adults, 4-5:30pm, Eaton Bray Village Hall, Contact 07500 007779
Monthly	
1st Monday	Eaton Bray Parish Council Meeting, 7.30pm, The Coffee Tavern (except Jan-2nd Monday)
1st Monday	Eaton Bray W.I. Meeting, 7.30pm. Eaton Bray Methodist Church Hall. Contact Margaret Jones on 01525 220991
1st & 3rd Mon (ex. Bank Hols)	Knit 'n Stitch at Edlesborough Village Hall, 1:45pm to 3:45pm. Contact Heather Westwood (01525 839083)
2nd Mon	Film Society, Sep to May, 2pm, Eaton Bray Village Hall, Graham Chappell 01525 220883
1st & 3rd Tues	Dunstable & District Orbit (social and charitable) Club meet at Dunstable Rugby Club at 8pm. For details contact 01525 222441 or 01582 755147
1st Saturday	St. Mary's Church, Eaton Bray Coffee Morning & Plant Sale, 10:30am - 12 noon
1st Sunday	St. Mary's Edlesborough Open Days, 2-5pm, May to September inclusive
2nd Monday	SilverLink, 2.30-4.00pm, Grace Baptist Chapel Edlesborough – activities, talks, friendship & refreshments for the over 60s
2nd Tuesday	Dunstable & District Local History Society meeting, 7.45pm, Methodist Church Hall, Dunstable (opposite Wilkinson)
2nd Tuesday	Edlesborough W.I. Meeting, 7.30 pm, Edlesborough Memorial Hall. Contact Sue Bingham on 01525 222522
2nd & 4th Tues	Dagnall Church Welcome Club, 2-4pm, Dagnall Church. Contact Catherine Hayden 01525 220527
2nd Wednesday	St.Mary's Ladies Guild, 2pm, St.Mary's, Eaton Bray
2nd Wednesday	Eaton Bray & Edlesborough Lions Club, 7.30pm, The Coffee Tavern
2nd Thursday	CAMEO Coffee, tea & chat, 10am-12noon, Edlesborough Methodist Church
2nd Saturday	Workshops Dynamic Yoga 9.30-11am £10 Eaton Bray Coffee Tavern, Keira 07936 693696
3rd Thursday	Edlesborough Parish Council Meeting, 7.30pm, Memorial Hall
3rd Sunday	Lunch club 11.30 to 2.00pm, Eaton Bray Village Hall, Chris Hewitt 222288
Last Saturday	Coffee Morning, 10:00-12 noon, Edlesborough Methodist Church

Please get in touch with the relevant organisation to check if sessions are running

Benefit from Local Advertising

With autumn now upon us, it is time to start planning Focus 2021 and we thank our current advertisers for the support they have given to Focus and the valuable contribution that they have made to our community.

The popularity of Focus continues and we deliver over 2400 copies, one to each household in Eaton Bray, Edlesborough, Dagnall and Northall (Covid permitting), ten times a year (24000 copies in all!). In addition, the magazine is accessible online (www.thefocusmagazine.co.uk) for which during the lockdown we had significant number of views. This provides extensive local advertising in full colour for your company, products or service, anytime, anywhere.

If you wish to advertise, please contact Sally Taylor on 01525 221576 or email: advertising@thefocusmagazine.co.uk



No Poppy Collection in Eaton Bray This Year

The awful virus from China has caused many problems since it first appeared.

One problem local to us is that Helen and I won't be handling any cash this year – so no house to house collections in Eaton Bray. Also, there will be no boxes in Eaton Bray shops or business premises for the same reason. Hopefully next year we may be able to remember the fallen in our normal manner at this time of Remembrance.

It should be possible to donate to the Royal British Legion Poppy Appeal at our major supermarkets, and they might even have poppies.

If anyone feels strongly that they want to make a donation this year, then we can handle cheques that are made out to 'Royal British Legion Poppy Appeal'. Please telephone us on 01525 221137 and we will sort out how we collect them.

Roger and Helen Wilkinson
Poppy Appeal Organisers, Eaton Bray

We will remember them...



Village Info



EDaN Community Transport
Peter Williams: 01442 842506

Village Hall Booking Contacts

Northall: Lorna Cabbage Tel: 07857 318696 www.edlesborough-pc.gov.uk/nvh

Email: northallvhbookings@gmail.com

Eaton Bray: Norman Lee Tel: 07975 797202

Email: bookings@ebvh.co.uk Website www.ebvh.co.uk

Dagnall: Liz Coates 01442 842550 & Trish Owen 07762 151364

Email DVH_Bookings@outlook.com

Edlesborough Memorial Hall: Penny Pataky, Tel: 01525 229358

Email: manager@edlesborough-pc.gov.uk

Police Contact Numbers...

making neighbourhoods safer together

General Assistance (Recommended Number): 101 Emergency: 999

Bedfordshire Police (Eaton Bray)

Leighton Buzzard Police Station/Kathryn Horgan: 01582 473411

Typetalk: 18001 01582 473418

Email: LPT.LeightonBuzzardLinslade&Rural@bedfordshire.pnn.police.uk

Thames Valley Police (Edlesborough, Dagnall & Northall)

PCSO Jackie Dodson

Email: NHPT@thamesvalley.pnn.police.uk

Defibrillator Locations

These units are registered with the Ambulance Services. To access them, please phone 999. You will be given the access code and the location of the unit will be confirmed. The defibrillator is easy and safe to use. The units can be found on the outside walls of the following locations:



Dagnall: Red Lion Public House

Eaton Bray: The Coffee Tavern

Northall: The Swan Public House

Edlesborough: Edlesborough Memorial Hall & Baptist Church, Summerleys



Helpline: 07930987064

Manned phone hours:

9am to 5pm, Monday to Friday

(An answering service is available for out-of-hours calls)

Call us if you want help with getting to the surgery/hospital, collecting prescriptions, minor errands or d-i-y jobs, form-filling, walking your pet, on-line shopping support etc. or if you would welcome our befriending service.

We help people of Eaton Bray and adjacent villages

Eaton Bray with Edlesborough

Parish News

Vicar: Rev'd Joy Cousans

The Vicarage, 11 High Street, Eaton Bray - Tel: 01525 220261

Curate: Rev'd Stephen Burge

Church Warden & Pastoral Matters: Catherine Hayden (01525 220527)

Reader: Gordon Gray (01525 220136)

Website: www.stmaryseatonbray.org.uk Facebook: St Mary's Eaton Bray

We continue to live in extraordinary times and as we approach the season of Remembrance in November, many of us will be looking back wistfully at how different life was only 12 months ago. During the current Covid-19 pandemic, it has been difficult to plan ahead as the rules change so often and so swiftly. We are delighted that St Mary's church has been open for services since the beginning of August. We are now holding services on Sundays at 10am and Wednesdays also at 10am. The church is laid out to enable social distancing and everyone is asked to wear a face covering in church. Despite the restrictions, it has been good to meet together for worship and to receive Holy Communion. The online service continues on St Mary's website, the church Facebook page and the church YouTube channel for those who are unable to come to the services in church. And from the middle of October, All Saints' Dagnall will be open for services once a month. The service for November will take place on Sunday 15th November at 10.30am.

We are hoping to be able to mark Remembrance Sunday with a short service in St Mary's churchyard at 10.45am on 8th November. Numbers for this act of Remembrance will be limited due to Covid-19 and we will be following the guidelines which are in place at the time. There will be more information on the church website <https://www.stmaryseatonbray.org.uk>. Please check this for the latest situation or look at the church noticeboard on High Street for further details. We also hope to be able to have a Service of Remembering in church at 3pm for those who've lost loved ones during the past year. This will be a ticketed event to enable us to keep within the social distancing guidelines for church. If you would like more information, contact us at admin@stmaryseatonbray.org.uk.

In the Bible, God's people spent time remembering the past and asking for God's help for the present. In the Psalms particularly we see this pattern reflected. Psalm 46, for example, tells of the Psalmist's trust in God despite all the difficulties which surround him. 'God is our refuge and strength, a very present help in trouble. Therefore we will not fear, though the earth should change, though the mountains shake in the heart of the sea; though its waters roar and foam, though the mountains tremble with its tumult.' (Psalm 46 verses 1-3) Despite all that is happening around him the Psalmist puts his trust in God as his refuge and strength. It is a reminder that throughout history, people have faced very difficult times. We too may feel overwhelmed by the difficulties we face. But I believe God is there, ready to listen to our problems, ready to be our refuge and strength as we call out to him.

The following prayer was written for the Coronavirus pandemic and is used in our

online service each week.

Keep us, good Lord,
under the shadow of your mercy
in this time of uncertainty and distress.
Sustain and support the anxious and fearful,
and lift up all who are brought low;
that we may rejoice in your comfort
knowing that nothing can separate us from your love
in Christ Jesus our Lord. Amen.

With every blessing,

✠ Joy, Vicar of Eaton Bray with Edlesborough



Services at St Mary's Church

SUNDAYS : 10.00am PARISH HOLY COMMUNION

On Third Sunday of each month:

10.00am – WORSHIP FOR EVERYONE a shorter, less formal service. (For anyone wishing to attend a service of Holy Communion there is a Family Communion at 10.30am at All Saints' Church, Dagnall, where visitors are assured of a warm welcome).

WEEK-DAYS: Wednesday: 10.00am Holy Communion

EVERYONE WELCOME AT THESE SERVICES. PLEASE BRING A FACE MASK.

In light of the current Coronavirus situation the Pastoral Care Team at St. Mary's, Eaton Bray welcomes your assistance in identifying any of our parishioners who might be sick or otherwise benefit from their support during this challenging time. Please contact us at admin@stmaryseatonbray.org.uk in this regard.

Dagnall Church Services



All Saint's Dagnall reopened for services on Sunday 18th October at 10.30am. All welcome.

Please wear a facemask.

**Dagnall Church, Ringshall Road
HP4 1RL**



Patricia's Cuisine



Presents

CHRISTMAS AFTERNOON

TEA DELIVERIES

FROM YOUR LOCAL CATERER

MENU:

Sandwiches: turkey & cranberry
smoked salmon & cucumber with seafood sauce
gammon ham with tomato mustard & mayo
cheese & chutney
egg mayo & cress

mini sausage rolls
wedge of Christmas quiche

Cakes:

Iced Christmas cup cake
Homemade fruit cake fingers
Chocolate fudge cake
Coffee & walnut cake
Homemade mince pies
Fruit scone with bramble jam & clotted cream



To include disposable plates/cutlery and Christmas Serviettes

Gluten/Lacto free/Vegan options available upon request.

2 persons: £14.95 per head
3-6 persons: £13.95 per head
7-20 persons £12.95 per head
Above 20 persons £11.95 per head

No VAT to add

Free delivery within 10 mile radius



www.patriciascuisine.co.uk
Tel: 01525 222174 Mob: 07778 393971



UNICORN WINDOWS LTD

UNIT 3 YOUNGS INDUSTRIAL ESTATE
STANBRIDGE ROAD, LEIGHTON BUZZARD
BEDS LU7 4QB



YOUR LOCAL HOME IMPROVERS

- ✓ DOORS; COMPOSITE, ALI AND UPVC
- ✓ CONSERVATORIES
- ✓ ORANGARIES AND GLAZED EXTENSIONS
- ✓ CAT FLAPS/DOG FLAPS
- ✓ BI-FOLD DOORS
- ✓ PORCHES
- ✓ CLADDING
- ✓ REPAIRS - INCLUDING REPLACEMENT GLASS

- ✓ WINDOWS; UPVC AND ALUMINIUM
- ✓ SOLID ROOF/ROOF CONVERSIONS
- ✓ CONSERVATORY REFURBISHMENTS
- ✓ SOFFITS, FASCIAS AND GUTTERING
- ✓ LANTERN ROOFS AND SKYPODS
- ✓ FLUSH SASH WINDOWS
- ✓ SLIDING DOORS
- ✓ AND MORE..





CONTACT US

FOR MORE INFO OR TO ARRANGE YOUR FREE, NO OBLIGATION QUOTE

01525 854272

sales@unicornwindows.co.uk






Carpet & Upholstery Cleaning

Professional & Local
All work guaranteed

Powerful equipment extracts more water
making it quicker to dry naturally

100% Guaranteed no chemicals left in carpet
when dry therefore will not easily resoil
& perfectly safe for children & pets

Recommendations account for 90% of my work

Absolutely no hard sell

Telephone Darren for a Free Quote

DEEP-CLEAN

01525 851 811 & 07790 034818

www.deep-cleaners.co.uk

Email: sales@deep-cleaners.co.uk

Problem Solving:

Virus & Spyware Removal
Internet & Email Assistance
Fault Diagnostics
Repairs & Upgrades
Slow Running PC's

Services:

PC & Mac Support
Wired & Wireless Networks
Data Recovery
Install & Set-up
Health Checks

On-site Visits:

Office Hours &
Evenings - by appointment

Sales:

Desktops, Laptops & Tablets
Printers & Peripherals
Software

For friendly advice call John Wallace

07968 536068 or 01525 261381

Email: john@computation.co.uk

Web: www.computation.co.uk

9a Lower Way, Great Brickhill, Buckinghamshire. MK17 9AG

**Computation
Services Ltd
Established. 1999**

"Excellent experience. I nearly fell asleep whilst having my fillings done! Very reassuring - no rush. I was made to feel completely at ease. Thank you!"
- R.R



Edlesborough Dental Practice



floss and smile
gentle dentistry



"Without doubt the most competent, gentle & lovely dentist in the Northern hemisphere! I won't see anyone else. Thank you from a nervous patient."
- M.B.

Edlesborough Dental Practice

Telephone: 01525 223175

11 Cow lane, Edlesborough, LU62HT

www.flossandsmile.co.uk

Get the Beautiful Smile You Deserve!

EMERGENCY TEXT TO : 07590035899



The Clear Alternative
to Braces



Implants

General Family Dentistry *Crowns *Bridges *Dentures *Smile Makeovers

***Tooth Whitening *Tooth straightening *Implants *Botox**

***Hygienist *Sedation *0% Finance**



Dentist :
Dr A. Johar
GDC number : 111350

Hygienist:
Mrs Jane Showder
GDC number : 2344



For all your painting & decorating requirements
 Domestic and Commercial
 call Max for a free estimate with no obligation
maxbro@btinternet.com

Coffee Tavern



Large Hall	£6.00 per hour
Commitee Room	£3.50 per hour
Large Hall & Commitee Room	£8.00 per hour

Bookings 01525 220891

Stairlift, access ramp and free WiFi available



Moren Associates
 Technology Services

Technology Support for Home and Business

PCs, Smartphones, Tablets, Printers
 Broadband, Internet, WiFi, Email
 Security Guidance



Virus Protection & Removal
 Upgrades & Installations
 Data and System Recovery



Hardware & Software Troubleshooting
 Home & Office Network Setup & Support

01525 229695 (Edlesborough)
support@morenassociates.co.uk



EcoTech Oven & Carpet Cleaning



- Non franchise family run business
- Eco-friendly Oven & Carpet cleaning
- Fully trained & insured technicians



OVEN CLEANING FROM £45
CARPET & UPHOLSTERY FROM £60

Call for a free quotation



01525 221922



www.ecotechovenandcarpetcleaning.co.uk

Find us on



Checkatrade.com
Where reputation matters

Dominic Woolcott Painter & Decorator



- Internal & External
- Plastering & Coving
- Insurance Work
- 20 Years Experience
- Competitive Rates

For a professional job call:
01525 229682 or 07747 042879

P. DYER ELECTRICAL

For all your Electrical & Testing & Inspection needs

- Re-wires
- Testing & Inspection
- Security Systems/Lighting
- LED & Low Energy Lighting
- CCTV Systems
- PAT Testing
- Fuse Boards
- Fault Finding/Repairs

Fully insured, Part P registered, all work guaranteed.
Fast, friendly, reliable, local electrician. For a free,
no-obligation estimate, call Paul on:



Tel: 01525 222109
Mobile: 07850 682815



Lee Hutt 25 YEARS
Heating & Plumbing Services

Bathrooms
DESIGN & INSTALLATION

TILING

HEATING

TAPS

Leaks

CALL OUTS

Free Estimates

01525 222145 07971 559185

Barry Cato Motor Repairs

Est. 1981

Servicing, repairs and MOT's arranged

Workshop at:

r/o Norfolk House Farm, Harling Road
Eaton Bray, Dunstable, Beds, LU6 1QY

Tel: 01525 221681 (workshop)
07836 650015 (mobile)

David John Harris



Green Fingers



(Established 1992)

All Fencing Work • All Gates • Paving • Patios
Driveways • Shingle • Hedge Setting and Cutting
Grass Cutting • Turfing Specialist • Exterior
Painting Service • Sheds Small Building Work
Trees & Shrubs Supplied

Tel/Fax: 01525 221745
Mobile: 07889 143713



Steve the Mower Man

Steve Johns
 All mowers and garden machinery
 repaired and serviced
 Collection and delivery available
07720 828166

Will Kimberley
Garden Services
01442 255784

Phone for a free no obligation written estimate
wkgardenservices@btconnect.com

- High hedges a speciality
- Fences erected and repaired
- General garden tidy up's
- In fact any job in the garden!

GRASS ROOTS
GARDEN MAINTENANCE



TREE SURGERY, HEDGE PRUNING,
 SELECTION SUPPLY AND PLANTING OF
 TREES, SHRUBS AND HEDGES.
 REGULAR MAINTENANCE/ONE-OFF JOBS
 (Fully Insured)
Brian McMahon NCH (Arb)
01525 221960

S M Reilly & Son Ltd
General Builders & Contractors



**Turning Your House into
 a Home Since 1987**

All aspects of the building trade undertaken

- *Extensions*Hard Landscaping*
- *Windows, Doors & Conservatories*
- *Fitting of Aluminium Bi-fold Doors*
- *Kitchen & Bathrooms*Drives*
- *Loft Conversions*

01525 221740 07970 637511



Flicks & Bangs

HAIR SALON

.....

A warm, friendly salon offering a wide range of bespoke hair services for all the family. Feel free to pop in for a complimentary consultation.

.....

www.flicksandbangs.com

.....

Flicks & Bangs

66 High Street
 Eaton Bray
 Nr. Dunstable
 Beds LU6 2DP

01525 221252

Opening Hours

Mon Closed
Tue 9 am - 5 pm
Wed 9 am - 5 pm
Thu 9 am - 8 pm
Fri 9 am - 6 pm
Sat 8 am - 4 pm
Sun Closed









01525
851080

.CO.UK

07973
167779

SIGNS

VEHICLE SIGNS

BOARDS & BANNERS

STICKERS

BUSINESS CARDS

PRINTED & EMBROIDERED

CLOTHING So Much More...

12 HARMILL IND EST LEIGHTON BUZZARD LU74FF

www.pinstripes1995.co.uk

Join us on Facebook – PINSTripES 1995

WASHING MACHINE REPAIRS

ALSO
DISHWASHERS, TUMBLE DRIERS,
AND ELECTRIC COOKERS



Call

ANDERSON D.R.S.

01582 665764

www.andersondrs.co.uk

SALES AND RENTALS AVAILABLE

Established over 20 Years

DUNCAN TOMBLIN

TREE SURGEON

Forestry Contractor • Tree Felling

Crown Reduction & Thinnings

Deadwooding • Hedge Cutting

Stump Grinding • Site Clearance

Private Agriculture Fencing Contractor

Chipper & Stump Grinding Hire

Digger Hire

FULL PUBLIC LIABILITY INSURANCE

FREE ESTIMATES

'The Best Choice For Your Tree'

TEL: (01525) 221946

MOBILE: (07802) 410728

12 Greenways, Eaton Bray, Beds



Patricia's Cuisine

Catering For All Occasions

- Buffets, Dinners •
- Christenings, Weddings, Funerals •
- Promotions & Business Lunches •

For Enquiries & Menu

Meadside Farm, 104 High Street,
Eaton Bray, Bedfordshire, LU6 2DP

Telephone: 01525 222174

www.patriciascuisine.co.uk

alto window cleaning

For a professional service.....

- Window cleaning
- Conservatory cleaning
- Fascia & gutter cleaning

07876 594186

“A wonderful
place to be!”



Eaton Bray Academy

Eaton Bray Academy is a friendly village primary school which caters for children aged 4 - 11 years of all abilities. Our Nursery provides education for children from the term after they are two.

Ofsted

Good
Provider



© Photography by Carrie



Tel: 01525 220468

Email: admin@eba.ec

www.eatonbrayacademy.co.uk

Smart[®] AUTOMOTIVE



EXPERTISE, QUALITY & EXPERIENCE
EST 2003

Car Bodyshop, Service Workshop & MOT Bay



MOT TESTING
FOR ALL MAKES & MODELS

4 WHEEL ALIGNMENT
& TYRE FITTING

SPECIALISTS IN COMPLETE
CLASSIC CAR RESTORATION

DEALER TRAINED TECHNICIANS

EXTENSIVE EXPERIENCE IN
PRESTIGE CAR PAINTWORK & REPAIR

ACCIDENT & VANDALISM DAMAGE

INSURANCE WORK UNDERTAKEN

MOBILE BODY REPAIRS
ALLOY WHEELS - DENTS - BUMPERS
CHIPS - SCRATCHES - SCUFFS

Fully equipped vans that come
to your home or office

FREE COLLECTION & DELIVERY
LOAN CARS AVAILABLE



01582 664772 www.smartautomotive.co

Smart Automotive, Units 17 & 18 Icknield Way Farm, Tring Road, Eaton Bray LU6 2JX

SMART AUTOMOTIVE IS THE TRADING NAME OF SMART TOUCH (MK) LIMITED



BUCKINGHAMSHIRE ADULT LEARNING

It's never too late to
IMPROVE YOUR ENGLISH AND MATHS



"Before starting classes, I found it difficult to express myself in front of individuals and in group environments. However, I am more comfortable with talking to people, especially my classmates. Although I struggle with spelling, people can now read and understand my written work."

Are you confused by commas? Are you puzzled by percentages? Are you scared of spreadsheets?

Buckinghamshire Adult Learning can help you with everyday English and maths to help you gain skills and confidence for work, home and in the community.

Our English and maths courses will help you to:

- Get a job
- Gain a qualification
- Help your children with their homework
- Progress to further studies.

We can also help with careers advice.

English

Our English courses are for adults whose first language is English and who want to improve their reading, writing, speaking or listening skills for work, home or in the community.

Maths

Our maths courses are open to everyone, regardless of your first language, and will help you to become more confident with using numbers; measures, shape and space; data handling.

Our tutors are highly experienced and qualified and specialise in working with adults. We pride ourselves in building 'learning confidence' – we will take care of you.

You can choose to do maths and/or English – it's your choice.

How to get in touch

Tel: 01296 674463

studentenquiries@buckinghamshire.gov.uk

www.adultlearningbc.ac.uk

Please let us know if you have a learning difficulty as we can provide support so you reach your potential.



Urgent Community Information for Buckinghamshire Residents Free English and Maths Courses from Buckinghamshire Adult Learning

Do you need to improve your English or maths skills? Do you need a qualification?

Buckinghamshire Adult Learning run free, part-time courses in English and maths, taught by a team of highly experienced, qualified and friendly tutors.

Courses are available in the daytime or evening to anyone who lives in Buckinghamshire. The courses are mostly free of charge and are based at centres in Aylesbury, High Wycombe and Chesham and online.

Learners can work towards a nationally recognised Functional Skills qualification at Entry level, Level 1 or Level 2. A Functional Skills qualification in English and/or maths may help them to progress in their career or to go to college for further study.



Teresa Meredith, Skills Manager at Buckinghamshire Adult Learning, said, “There is no better time to gain some new skills or a new qualification. Our English and maths teams have worked incredibly hard over the summer to create Covid-19 friendly learning environments in our centres and to build online learning platforms. I would urge anyone interested to visit our website at <https://www.adultlearningbc.ac.uk/english-maths/> or telephone us on 01296 674463. We welcome new learners all the time”.

Buckinghamshire Adult Learning offers a free and confidential pre-course assessment to all learners before they begin. This ensures that each learner is learning at the correct level.

Nick Andrews, an English tutor, reinforced this message: “We not only teach the subject in an accessible way as possible, we also develop ‘learning confidence’ in our classrooms. It can be the case that learners feel nervous about re-entering education; some learners had mixed experiences at school and feel the need to ‘start again’. It’s our job to help them do that in a fun and supportive environment.”

There is little doubt that many learners have gained from these courses over the years, including one learner who obtained her Functional skills English qualification at a recent summer school. She wrote in to say, “It all worked out really well and I have now been offered a place on my midwifery course. I am so happy. Thank you all so much for your massive help. Without you I would not be a student now or a midwife in the future!”

Contact Buckinghamshire Adult Learning via the website at <https://www.adultlearningbc.ac.uk/english-maths/>

Alternatively, email albs@buckinghamshire.gov.uk or telephone 01296 674463



Edlesborough High Street & Parking in the Parish

Many parishioners will have seen the addition of the new Zebra Crossing outside Edlesborough School. The installation of this crossing was part of the Bellway Homes planning application and is a welcome addition to the village. The crossing provides a safe crossing point for the pupils of Edlesborough School and many other villagers.



Inconsiderate parking continues to be a contentious issue in the parish. Edlesborough Parish Council has no jurisdiction over parking. Any parishioner with concerns about dangerous parking should report these to Thames Valley Police who have the authority to issue tickets

EPC asks parishioners to remember **not** to:

- Park on the white lines by the shops, school or junctions
- Park on the yellow zig-zags outside the schools
- Park on pavements or grass verges
- Park across driveways
- Park too close to a junction



Parking legally and safely helps to keep all parishioner safe.

New Pavilion

After continued hard work and persistence from Ken Holloway the Council has been awarded a grant from Sport England for the New Pavilion. This money will be used to fund the wheelchair accessible lift inside the building.

Work continues to progress, with the completion of the roof, and the installation of the windows and doors. Work can now commence on the balcony and the inside of the



building.

EPC continues to work very closely with the Edlesborough Community Sports Club (ECSC) charity who will manage this wonderful new facility. Full details of those eligible for membership will be published shortly by ECSC but certainly all Edlesborough parishioners will have free membership. Whether it can open fully when completed will depend on the COVID rules at the time.

Clean up after your dog!

Buckinghamshire Council is responsible for the emptying of the dog bins in Edlesborough, Dagnall and Northall. These are currently scheduled to be emptied on a Friday. If a bin is overflowing please call the number on the bin and quote the reference number on the bin. If a bin is broken please inform EPC as soon as possible to enable a swift repair or bin replacement as necessary.

Now that the evenings are darker please be extra vigilant when walking your dog to ensure you clear up after them.



Outdoor Gym Equipment in Dagnall

At the September Council meeting EPC agreed to purchase and install six pieces of outdoor gym equipment. These items will be installed on Dagnall Recreation Ground and will be donated to Dagnall Village Hall committee who will be responsible for their maintenance.



If these items prove to be a well-used addition to the parish the Council will look towards purchasing more items for Northall and Edlesborough.

Fly-tipping, Potholes, Pavement & Road Issues

Should you notice or witness **fly-tipping** in Edlesborough, Dagnall or Northall please report this to Buckinghamshire Council using the following link <https://www.fixmystreet.buckscc.gov.uk/> Issues with **roads & pavements** should be reported to Bucks CC using the following link <https://www.fixmystreet.buckscc.gov.uk/> **IMPORTANT:** If you consider the issue to be dangerous or an emergency, please call Transport for Bucks on: 01296 382416 (09:00 – 17:30 Mon-Thurs, 09:00 – 17:00 Friday) or 01296 486630 (out of hours and weekends). Posting about it on Facebook can be useful to Parishioners but this does not, however, lead to roads/pavements being repaired or fly-tipped items being removed.

Christmas Wreaths in Edlesborough

EPC will, once again, be hanging the Christmas Wreaths along Edlesborough High Street. Bas Westrope has kindly agreed to donate his time and machinery to hang and remove the wreaths. Any local business or parishioner wishing to sponsor a wreath should contact the Clerk. This year's sponsorship money will be put towards improvements to the play area on Edlesborough Green.



Speedwatch & EDaN Traffic Management

The EDaN Traffic Management team needs more new members and volunteers to help with their new Sentinel device. A few parishioners have volunteered but we need more to set up training to operate the video speed camera. If you have an interest in traffic management in the villages or are concerned about Road Safety, please contact Cllr Alan Williams at Alan.williams@edlesborough-pc.gov.uk or 07828 398371



Salt Bins

The responsibility for filling these bins is with Transport for Buckinghamshire. When supplies are running low a refill request should be submitted via their website <https://www.fixmystreet.buckscc.gov.uk/> It is more appropriate if a parishioner living close to the salt bin makes the request but in practise anyone can make the request.



Have your say

From time to time EPC is asked to represent local opinion. The latest is an initiative by Buckinghamshire Council to engage more closely with residents. EPC is trialling an on-line questionnaire to understand priorities. There is a questionnaire on our website for you to complete and an invitation volunteer to participate in subject matter groups. Please help us and Buckinghamshire Council by following the link to our website www.edlesborough-pc.gov.uk

Streetlights

Please report failed streetlights in Edlesborough, Dagnall and Northall to the Clerk for repair.

When making a report please ensure you provide the Clerk with the information displayed on the lamp post.

Ordinary Council Meetings

EPC will continue to hold their Ordinary Council Meetings via the Social Media Platform, Zoom until it is deemed safe to resume holding physical public meetings.

Any parishioner wishing to attend the Ordinary Council meetings should visit EPC's website for more information.

The next Edlesborough Parish Council Meetings will take place on:

- Thursday 19th November 2020
- Thursday 17th December 2020

The meetings will commence at 7:30pm.

Please check the Council website for any changes in any of our current 'virtual' meeting plans via Zoom.

All Parishioners are welcome to attend all Ordinary Parish Council meetings and may ask questions, raise issues and give suggestions during the Open Forum before the formal start of the meeting.

The full minutes of the Parish Council meetings are available to view on the website or from the Parish Clerk.

Edlesborough Parish Council Contact Information:

Clerk: Miss Penny Pataky *Office hours Mon – Fri 9am – 12pm (Excl. Wed)*

Email: clerk@edlesborough-pc.gov.uk 01525 229358 Website: www.edlesborough-pc.gov.uk

Facebook: www.facebook.com/EDANParishCouncil



Accessing Devices, Emails & Services for a Departed Relative

Recently, we have been asked to help access departed relatives' email addresses, their devices, IT systems and accounts. This has proved to be very difficult or even impossible if you have not planned for this.

Unless you have planned for someone else to access your email account, online website, device etc., it can be very difficult for them to gain access. Often a factory reset does not allow you to access the device.

Apple

<https://support.apple.com/en-us/HT208510>

For you to be able to access a deceased family members account or device associated to this account, Apple require a number of pieces of information, including a court order giving you the permissions to access their accounts/devices.

Google/Gmail

<https://support.google.com/accounts/troubleshooter/6357590?hl=en>

Although Google in the UK do not need a court order, they will not grant you access to the account, but can make some of the content available to you, if you provide a number of appropriate documents.

Microsoft

<https://support.office.com/en-us/article/accessing-outlook-com-onedrive-and-other-microsoft-services-when-someone-has-died-ebbd2860-917e-4b39-9913-212362da6b2f?ui=en-US&rs=en-US&ad=US>

Again, Microsoft requires a court order to allow someone access to your accounts or services.

Due to the onus upon these companies to keep your data secure and in line with current legislation, they all tend to have similar requirements.

How do I plan for this?

Some companies, such as Google, allow you to provide “authorised users” who are permitted to access your account. In most cases the companies provide guidance on how to do this. You should set these up now.

It is good practice to store usernames and passwords in a secure location. This can be in a notebook which is securely locked away, or using specific password applications where all of this information can be secured for you, making sure you have a very secure password for the application as this is effectively “the keys to the kingdom”.

Either way, make sure your relatives know where this information is kept and how to gain access to it. Without this, they could be left with expensive devices that they can't use or accounts they can't access or close down.

It is also good practice that when a relative dies, you close all their accounts and services, so that they can't be used fraudulently. Each service is different so look in their help section or contact us for assistance on this.

EATON BRAY PARISH COUNCIL

HIGHLIGHTS OF THE MINUTES

A full/detailed copy of the minutes for Eaton Bray Parish Council can be found on our website.

A hard copy of the minutes can also be viewed on the Parish Council's notice board at The Coffee Tavern.

FOCUS REPORT: SEPTEMBER 2020

TO ALLOTMENT HOLDERS: **ALLOTMENT RENEWAL 2020-2021**

It's that time of year again when allotment renewals are due. Due to Covid-19 restrictions, allotment payments in person will not be able to be made therefore you can either forward your payment, either cash or cheque (cheques made payable to Eaton Bray Parish Council), to the parish office or alternatively make a payment through on-line banking - if this is your chosen method please email the Parish Clerk for further details.



PARISH COUNCIL MEETINGS

Due to social distancing measures, Press and Members of the Public are not be able to attend Parish Council Meetings however are invited to join the meeting through the ZOOM link provided on the EBPC website, www.ebpc.co.uk

NEW PARISH COUNCILLOR: The Parish Council were pleased to co-opt and welcome Cllr Gavyn Lugsden on to Eaton Bray Parish Council.

PARISH COUNCILLOR VACANCY: The Parish Council has a vacancy for Parish Councillor, if interested please contact the Parish Clerk.

CBC CENTRAL BEDFORDSHIRE COUNCIL (CBC)

Cllr Philip Spicer email Philip.Spicer@centralbedfordshire.gov.uk

CBC Website www.centralbedfordshire.gov.uk **CBC Customer Services:** 0300 300 8301

CBC Email: customers@centralbedfordshire.gov.uk

Anti Social Behaviour: CBC offer an on-line reporting service for anti social behaviour. They share the reported information with Bedfordshire Police to be able to prioritise the cases reported. CBC are able to help with street drinking, incidents of abusive, intimidating and threatening behaviour which affects the wider community, street nuisance, drug related issues centred around a specific premises, persistent behaviour that is having a detrimental effect on the quality of your life, and that of your neighbours. To use this service please use the following link https://www.centralbedfordshire.gov.uk/info/43/community_safety/147/antisocial_behaviour

SPEEDWATCH

Speedwatch are to resume monitoring sessions in October 2020 Government restrictions permitting. If there are local residents who would like to join the group and actively participate in helping to reduce speeding through Eaton Bray, please contact Cllr Mark Tomkins councillormarktomkins@gmail.com or visit www.ebpc.co.uk for more details.



S.I.D. (Speed Indication Devices)

The fitting of replacement S.I.D.s for the parish was delayed due to the supplier having to close during lockdown, their offices are due to re-open in October 2020 (covid 19 guidelines permitting), the Parish Council will get in touch with them for an update on the replacements.

PARISH COUNCIL WEBSITE

To keep up to date with what is happening in your parish, you can get all Parish Council news and updates from the Parish Council website. The website has all Parish Council meeting agendas, minutes, financial documents and contact information as well as official sponsored events/initiatives and is the official council communications website. Visit it here: www.ebpc.co.uk



Heidi Head, Parish Clerk

Email: clerk@ebpc.co.uk – Telephone/Text: 07931 479663 – Website: www.ebpc.co.uk

Office Hours: Tuesday/Thursday/Friday 09:30-13:30hrs

Follow Eaton Bray Parish Council on Facebook and Twitter

Keep up to date with what is going on in your parish



EDLESBOROUGH SURGERY

11 Cow Lane Edlesborough

Enquiries - 01525 221630 Appointments - 01525 220333

www.edlesboroughsurgery.co.uk

**Dr Heather White, Dr Lee Mitchell,
Dr Stephanie Johnston, Dr Kirsten Riemer & Dr Shiv Koria**

**Friendly village Practice offering a wide range of health services including
coils/implants, minor surgery, travel advice, in-house blood tests at
surgery, on-line appointments and repeat prescription ordering.**

**Nurse Practitioners offering acute clinics with same day appointments.
Also Midwife. Local District Nurse service. Long established training
Practice with a rotation of qualified doctors.**

EDLESBOROUGH PHARMACY

01525 223181

Pharmacist - Mitul Patel



**Friendly reliable professional service at the pharmacy
and well-established delivery service to the villages.**

Professional advice always available.

**All doctors/dentists/veterinary/hospital prescriptions dispensed.
Herbal/Homeopathic products available. In addition we supply Disability
aids, e.g. Wheelchairs, Incontinence aids, Ostomy/Colostomy products,
Malaria Prophylaxis, Private Flu Vaccinations**

We are happy to order any products you may require.

Instant PASSPORT/ID Photos available

***** New for Everyone with Dunstable Doctors *****

**Patients of Kirby Road, West Street, Kingsbury Court, Priory
Gardens, Eastgate Surgery**

**Sign up now to have your prescriptions sent electronically to
Edlesborough Pharmacy. Collect your medication from us, no car park
charges and a well stocked pharmacy.**

**We have a free weekly delivery service for the housebound, elderly and
for those unable to collect from the pharmacy.**

email mitul.patel5@nhs.net/Tel 01525 223181 for sign-up forms

ASPECT

YOUR LOCAL ELECTRICIAN
TOTTERNHOE
OVER 20 YEARS EXPERIENCE

ELECTRICAL

CONSUMER UNIT UPGRADES (FUSE BOARDS)
LIGHTING - INTERIOR, EXTERIOR & SECURITY
REWIRING
NEW INSTALLATIONS
TESTING & INSPECTION

ALL WORKS TO CURRENT WIRING & BUILDING REGULATIONS
PART P CERTIFICATED & FULLY INSURED



CALL STEVE ON
07976 283969 / 01582 665068
aspect@sparky.me



CHIROPODY HOME VISITING PRACTICE

Julia Reading, BSc(Hons)

17 years experience

- * Corns * Hard skin * Verrucae
- * Thickened/Ingrowing nails
- * Nail cutting * Diabetic feet

Please telephone: 0774 647 2781

for more information or to make
an appointment

The COLLEGE
of PODIATRY

hcpc
registered
www.hcpc-uk.org

Anne Johnson Osteopath
6 Moor End, Eaton Bray

Back, neck and joint pain

Postural tension and headaches

Arthritic and other muscle and joint problems

01525 221958 / 07957 250682

Book by phone or online

www.anne-johnson.net

R.J.O'CONNELL BUILDING SERVICES

EXTENSIONS, PATIOS,
DRIVEWAYS, ROOF REPAIRS
AND PROFESSIONAL
DECORATING SERVICE

TEL: 01296 681323

MOB: 07855 236726



JAMES FALCON-CROSS LANDSCAPING AND OUTDOOR LIVING DESIGN

ALL ASPECTS OF LANDSCAPING
UNDERTAKEN INCLUDING
FENCING, TURFING AND PATIOS
TIMBER STRUCTURES
DESIGNED AND BUILT

VEGETABLE AND HERB GARDENS

01442 843258 / 07769 901325

ONECROSSFALCON@GMAIL.COM



Giblin

The Village
Property Experts

If you are thinking of moving, or are curious about
the value of your property, then call
The Village Property Experts.



Giblin Property • 4a Wallace Drive • Eaton Bray • Bedfordshire • LU6 2DF

01525 220605

info@giblinproperty.co.uk • www.giblinproperty.co.uk • lettings@giblinproperty.co.uk

N.D.S.

Neil Scott
General Building & Plumbing
(30 years experience)

- Extensions • Patios • Fencing
- Property Maintenance • Roofing
- UPVC guttering, soffits & fascia boards
- Kitchens & Bathrooms fitted

Can also

Replace steamed up/misty double glazing

Tel: 01525 221470
Mobile: 07946 626564

FREE ESTIMATES

...

ALL WORK CONSIDERED

NO JOB TOO SMALL

For a top quality
decorating job call

Marc Flack

01442 842639 (Dagnall)

Trading locally for over 15 years
References are available.

Misty Double Glazing?

Over 30
Years
experience.
FREE
Quotes

Over 30
Years
experience.
FREE
Quotes

**KEEP YOUR WINDOW FRAMES...
... WE JUST REPLACE THE GLASS!**

- UPVC • Aluminium • Or Wood

Because we replace just the glass the repair is a
Fraction of the cost of a complete replacement window.

BEFORE



AFTER



mistydoublinglazing.co.uk
QUALITY GLAZING SERVICES

01525 876808

WE ALSO REPLACE BROKEN...

- Glass • Handles • Hinges & Locks
- AND REPAIR...Patio Doors & Conservatories!**



**Café
masala**

Exquisite Indian Cuisine

We Cater for Office or Private Parties and don't
forget to try our Sunday Buffet

10% Discount on all Takeaway Orders Over £12

Fully Licensed & Air Conditioned

Open Seven Days a Week

Hours: 12 Noon to 2.30pm & 6.00pm to 11.30pm

Tel: 01525 22 22 64

63 Bower Lane · Eaton Bray · Dunstable · Beds · LU6 1RB
email: taraque@hotmail.co.uk · www.cafemasala.com



M J Security Systems Limited

www.mjsecurity.co.uk

01582 665022

Intruder Alarms CCTV Door Entry/Access

- Est. for 35 years and NSI Gold Accredited Installer since 1987
- Bespoke systems for commercial and domestic properties
- Free site surveys and quotations
- Takeover/removal/upgrade of existing equipment
- 24 hour/365 day engineer access
- Non contract engineer call out



Absolutely Plastered

**DOMESTIC/COMMERCIAL,
CLEAN AND RELIABLE SERVICE,
FREE ESTIMATES, FRIENDLY ADVICE**



- * Plastering & Coving
- * Floor Screeding
- * Pebbledashing & Rendering
- * Dry Lining
- * Cornices & Mouldings
- * Insurance Work Undertaken

CALL NICK CONWAY ON

Mobile: 07751 830716

Tel: 01296 688981

6 Cotes Way, Wing, LU7 0RB

ARC Contract Services Ltd

- Painting & Decorating ● Plastering
 - Wall & Floor Tiling ● Door Hanging
 - Bathroom & Kitchen Installations
- 20 years experience

All work guaranteed and fully insured

Call Adrian : 01582 539179

Mobile : 07789730580

CHARLES HILL

GARDEN SERVICES LTD

DESIGN | BUILD | MAINTAIN

LANDSCAPE CONTRACTORS

NCH Horticulture City & Guilds Garden Design

A professional company working with all your garden requirements from design to complete landscape.

07773 723236

www.charleshillgardenservices.co.uk

www.alleyearroundbbq.co.uk

Gas Boiler Servicing

Over 40 years experience

Have your boiler serviced by a **Gas Safe**
and **CORGI** registered engineer

Other services available:

Maintenance, repair and installation of all domestic gas appliances including LPG. Boiler installations, Landlord Safety Certificates and Power flushing.

Free Quotes, no call out fee, and free friendly advice on all of the above.

Edwards Gas & Heating Services

Eaton Bray

Tel 01525 220626

www.edwardsgasandheating.co.uk

stevethegas123@gmail.com



ILLUSTRIA

Kennels & Kathotel

Offering your pet a fully licensed Dog
and Cat boarding service.

Purpose built Dog kennels

Individual Cat chalets with outdoor
exercise runs

All in pleasant country surroundings

01582 ~ 665343



ILLUSTRIA
Springfield Road
Wellhead
NR Dunstable Beds
LU6 2JT



Proprietors

Mick, Denise and Michele Garrod



Live a healthy & active life

Free 10 minute advice chats with
our Chartered Physiotherapists
& HCPC Registered Podiatrists

PHYSIOTHERAPY
PODIATRY &
CHIROPODY
PILATES
ACUPUNCTURE
SPORTS INJURIES
MASSAGE
WOMEN'S HEALTH
& PREGNANCY
CARE

St. Judes
physiotherapy, health and well being

01525
377751
enquiries@stjudesclinic.com
www.stjudesclinic.com



TIME TO MOVE?

**Don't be alarmed,
we're here to help!**

Established in 1999

e: info@plummproperty.co.uk

Five Good Reasons to use **Plumm Property**

Private Offices - direct savings to you on fees

Local Knowledge - from our highly experienced team

Unrestrictive contracts - no lengthy tie-in periods

Marketing to outside area - attracting London buyers

Managing all your needs with a 1st class professional service

From Offer through to Completion of Sale



01296 660230

www.plummproperty.co.uk



Stephen D. Janes

(Established in 1982)

**CARPENTRY, JOINERY
KITCHENS FITTED
PROPERTY MAINTENANCE
TELEPHONE: 01525 220649**

G & J Groundwork & Landscapes

Block Paving * Patios * Driveways
Clearance * Paths * Shingle * Slabs
Artificial Grass * Fencing
Free estimates

Garry

01582 477568 07949 118011

Neil Hodson Associates

*BUILDING DESIGN
STRUCTURAL ENGINEERING*

**PROFESSIONAL BUILDING DESIGN,
ADVISORY AND DRAWING SERVICES**

From plans for domestic extensions to multi-storey offices, commercial buildings and factories.

Structural surveys, site surveying, advice on building defects and Feasibility Studies

Planning Applications and Building Regulation Consents obtained.

**24 HIGH ST TRING
Tel 01442 890894 OR
Edlesborough 222462**



Moren Associates
Publishing Services

Desktop Publishing

**Presentations
Books, Leaflets Brochures
Magazines, Adverts
Design & Layout
Self Publishing**

**Digitising
Scanning of Photos &
Documents, Slides & Videos
Archiving, Photo Repairs
Domain Name, Email
Address &
Web Site Hosting**

01525 229695

enquiries@morenassociates.co.uk

www.morenassociates.co.uk

D Scott and Sons

Home Services Limited



**Plumbing, Heating
& Drains Specialists**

- Boiler repair**
- Boiler installations**
- Powerflushing**
- Annual servicing**
- Landlords certificate**
- Magnetic system filters**
- Radiator valves**
- Oil central heating**

Other services...

We offer a full range of plumbing services including full bathroom refits, showers, sinks, taps, traps & drainage and kitchen appliance installations.

Drainage - including repairs, camera surveys & drain jetting.

www.dscottandsons.net



**contact us now on
01525 791563
07921 670437**





EDLESBOROUGH TENNIS CLUB

Come and play tennis with us at our friendly club on The Green

- High quality floodlight courts with easy booking system
- Coaching available for adults and children from our LTA coach
- Weekly club nights, with balls and floodlights provided

Contact us at: enquiries@etctennis.org or visit us at: www.etctennis.org

Eaton Bray Methodist Church

We had begun to consider how we might safely start socially distanced services in our church but, with the sharply rising numbers of infections, we feel we should hold back until the situation is looking more positive. In the meantime, our Zoom services continue to bring us together with fellow Christians circuit-wide and give us a strong sense of community and shared values. In our first September service

we were treated to a moving reflection by Brenda Ballantyne; she drew on many fine examples of paintings and sculptures which celebrate mutual love and respect and talked us through the biblical guidance for approaching and reconciling ourselves with our enemies. Supported by prayer, we can learn to see the best in people and accept their differences in a loving way. On the second Sunday, our Minister, Nigel, developed this theme, encouraging forgiveness, restoration and inclusion. Too often we are guilty of careless and inaccurate judgements about others; as we, too, will be judged, we should offer others we should not be harsh or unforgiving in our assessment of other people. Our Harvest Festival service on the third Sunday was led by Geoff Best with great verve. Each household had been asked to prepare a plate of plenty and a plate of poverty to sit beside their screens. Mankind's stewardship of the natural world has been a significant factor in creating global warming and food / productivity imbalance. Geoff suggested that the harvest and indeed, the pandemic, challenge us to reconsider our lifestyle and get our collective priorities right. Our final service of the month was conducted by Colin Quine, a welcome return to our church. Basing his reflection on examples of anger in the Bible - such as Jonah - he encouraged us to examine more carefully our own moments of resentment and fury; anger usually signals that 'something is wrong' but is that wrong outside us or within us? It may well mark a lack of insight or compassion on our part.

A Warm Invitation

Our short online Zoom Sunday Service takes place at 10.30am. If you would like to join in, please contact our Zoom Service Host, Ed Syrett on 07814624628. You will be most welcome.



Is Working from Home a Pain in the Neck?



Is Working from home a pain in the neck? A recent article by Ashleigh Webber in Working from Home reports that 4 in 5 workers have developed musculoskeletal pain.

In the workplace, checks are usually put in place to ensure that computers, desks and chairs are all set up for the user, but the charity Versus Arthritis said that it had found that 89% of those suffering with back, shoulder or neck pain in their new workspace, had not told their employer about it. Alarmingly, 23% were getting musculoskeletal pain most of the time and 46% were taking painkillers with back pain the most common complaint at 50%, followed by neck 36% and shoulder pain 28%.

Versus Arthritis said people were reluctant to mention their health because they didn't know their rights or were worried about job security. The charity urged employers to help their employees by aiding communication with them and addressing any ergonomic concerns. Karen Middleton, Chief Executive of The Chartered

Society of Physiotherapy commented "This research isn't surprising as Covid-19, months of working from home and reduced activity levels, will have had a serious deconditioning effect on millions of people".

Ensuring that chair, desk and computer laptop setups are correct, will lessen daily repetitive strain. Taking regular breaks to get up and move around are also crucial. Good posture helps keep your joints healthy and strong - sit or stand 'tall' with your shoulders back and your core (tummy) muscles slightly pulled in this will help your spine, shoulder and hip joints align correctly. Physiotherapists can help with advice, exercises and hands-on treatment where necessary. If you need help, give us a call.

**Moira D'Arcy Grad Dip Phys
MCSP MAACP POGP Chartered
Physiotherapist & Practice Principal**

**St Judes Clinic
26 Lake Street
Leighton Buzzard
LU7 1RX**

**☎ 01525 377751
🌐 www.stjudesclinic.com
✉ enquiries@stjudesclinic.com**



As the WEDNESDAY CLUB at NORTHALL is still unable to open currently, we are keeping in touch with our members by mailings, phone calls and deliveries. By the time you read this, we shall have delivered a Harvest Platter to those who wished to receive it (thank you to Patricia's Cuisine for preparing these delicious platters, full of homemade goodies) and also Harvest Boxes very generously donated to us by the children (and parents) of Dagnall School.

We usually welcome some of the children at Club in the afternoon and they bring in their beautifully decorated shoeboxes full of Harvest goods for our members; and then they entertain us with a little harvest presentation including a lovely song. We then treat them to chocolate biscuits to reward their efforts! We shall very much miss seeing the children as they are very sociable and it makes for a wonderful afternoon. So we want to say a big THANK YOU for remembering us and creating your boxes in the current difficult circumstances. We very much appreciate your efforts, and look forward to seeing you all again when normality returns. We have other deliveries planned for our members in November and December.

If you have a neighbour or family member who would like to go on our waiting list, or would like to find out more about our volunteer roles available at club, please give Anna a call on 07854 230243 and leave a message.



www.eblions.co.uk

Come and play fun team
football within our village
community

Our coaches are FA Qualified
and CRB checked

New players required

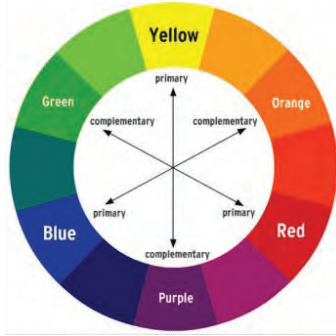
EB Lions your local youth football club are looking for keen boys and girls from ages 4 to 17 to join our friendly and inclusive club based in and around Eaton Bray, Edlesborough, Dagnall, Kensworth, Slapton, Totternhoe and the surrounding area. We have many teams and over 200 players playing exciting team sport! We welcome new players at any age group to start playing football within our village community. We are specifically looking for players for our U10 (Year 5), U12 (Year 7), U15 (Years 9/10), U18 Sunday, U16 girls (Years 10/11) Womens (Age 16+ Sunday). Please get in touch if you want to play, we have teams at most age groups. Contact us at enquiries@eblions.co.uk.

Photography in Focus

In this series, John Hockey shares some tips

COLOUR

First, some colour basics. Let's look at the so-called 'colour wheel':



Primary colours are the three key colours - Red, Blue and Yellow. They cannot be made from any other colour. The three secondary or complimentary colours (green, orange and purple) are created by mixing two primary colours together, i.e. you mix blue and yellow and you get green. What has been found is that if you put a primary colour next to the secondary colour opposite it on the colour wheel, you get a high degree of contrast, but can create a lot of visual vibration too. A colour such as red can be useful in photography as it can lead the eye in and when put next to the complimentary colour green, can produce a very vibrant image. The red nasturtiums in the picture contrast strongly with the green leaves so as to make them almost glow.



Putting complimentary colours together makes for interest in a picture. I'm betting that when you look at this picture of an attractive window in Durnstein on the Danube that the first thing you notice is the reddy-pink geranium with green leaves, then the white one, then perhaps the smooth frame and lastly the rough cast wall, even though the latter is worthy of interest in itself:

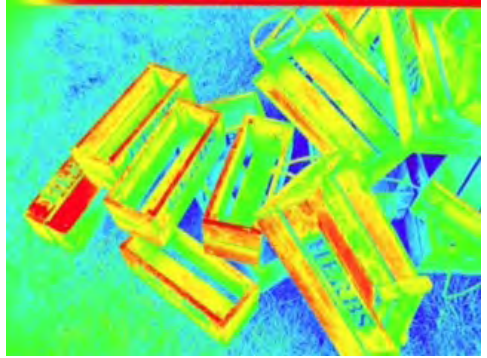


The technique of putting colours together to achieve a specific effect was known to the Impressionist painters. Some, such as the Pointillists who painted using dots of colour (e.g. the French painter Seurat) used combinations of say blue/purple and yellow to make their landscapes almost luminescent.

This picture of gig racing on the Isles of Scilly shows what can be achieved when blue/purple and yellow/orange are combined – you can almost feel the intensity of the evening glow as the sun sinks in the west over the isle of Samson.



It is possible to adjust the colours of a relatively plain scene to make them more interesting, and you do not have to have complicated software to do it. This is a pile of boxes that had fallen over at a plant fair locally. For fun I shot the actual picture of wooden boxes with my camera and then took a picture of the resulting print with my tablet, set to 'Thermal Camera' on the Photo Booth App already installed. One highlights form, the other colour.



Lastly do not forget that black and white are also colours and can be used to good effect.

Here is a doorway in Bratislava and although the shot could have been taken in colour, I decided to take all the pictures in that city in B&W. Personally I do not think the photograph suffers from the so called 'lack of colour', do you?



Next article: Texture - see page 46



Northall Baptist Church

A little Church with strong local links

Whatever the weather

My Mother had 2 favourite sayings: ‘Whether the weather be fine or whether the weather be not, whatever the weather, I’ll weather the weather, whether I like it or not’. The other one, a tongue twister, is less well known and goes ‘It rains upon the just and upon the unjust, but more upon the just as the unjust has the just’s umbrella’.

We’ve had a very good summer with lots and lots of hot sunny days. After 3 very hot days there start to be complaints – it’s too hot! then 3 wet days also brings complaints – it’s too wet! You can’t please all the people, all of the time. It got me thinking about the weather mentioned in the Bible. The early memorable time is the rainbow God sent as his promise that he wouldn’t destroy all living creatures again. A sign we now see regularly in support of the NHS and Care workers.

Jesus, in Matthew 16, when tested by the Pharisees and Sadducees asking for a sign from heaven, said ‘when evening comes, you say it will be fair weather for the sky is red, and in the morning, it will be stormy for the sky is red and overcast’. Jesus goes on to refer to Jonah. You will remember that Jonah was given a message from God, to go to the great city of Nineveh and ‘preach against it because of it’s wickedness’. Jonah disobeyed and ran away to sea. God sent a great wind and Jonah (who the sailors thought was the cause of this problem) was thrown overboard and swallowed by a great fish. It says Jonah prayed from inside the fish and the Lord commanded the fish and it vomited Jonah onto dry land. Again he was told to go to Nineveh and proclaim God’s message and this time he obeyed. That was quite a storm to ensure that the people of Nineveh heard God’s scary message that the city would be destroyed in 40 days if they didn’t repent. They did and were saved.

We read in Mark 4 v 35 about Jesus sleeping in the boat, crossing the Sea of Galilee and a ‘furious squall’ blew up with the waves crashing into the boat. The disciples woke Jesus suggesting that he didn’t care about them drowning, he calmed the wind and they were amazed. These were seasoned fishermen who would have been used to storms on the water, so it must have been out of the ordinary.

We, in this country live in a very temperate climate but need to be mindful that God is over all our weather and must not ignore his message of repentance.

We are hoping to return to our Church building for Sunday services from November but please check our website. Our services either on Zoom or in the Church are at 11 am. If you come and join in the worship, music and song, you’ll get a very warm welcome. Government rules will apply in the Church building.

For those interested in the history of Northall Baptist Church, a free copy of the booklet, Rebels in Green Pastures can be supplied or downloaded from our website: <http://northallbaptistchurch.org/>

✉ Ruth Cox Tel: 07791 425625

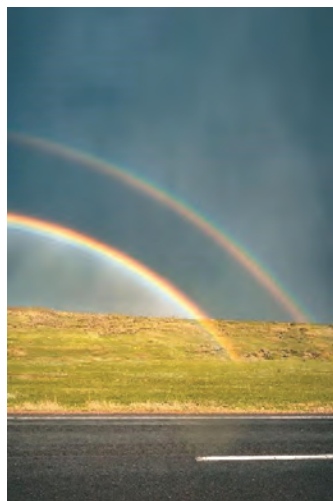


Photo by Vlad Chețan from Pexels

Your Photos

*This page:
Red Kite and
Mandarin Duck
by Brian Dumpleton*

*On next page:
Edlesborough Church in
Spring by John Hockey
Autumn on the Downs
by Phil Wood*





What do Foxes Eat?

And More Facts about Foxes

Written by Charlotte Varela, volunteer content writer for Woodland Trust



Whether we live in the countryside or a bustling city, most of us have seen a fox during our lifetime. But how much do you know about one of the UK's most iconic animals?

Most foxes live in rural areas including woodland, farmland and wetland habitats. But that doesn't mean you'll see a fox when you next go for a country walk - rural foxes are very shy. You are more likely to see an urban fox trotting down the street or denning under your shed!

What do foxes eat?

Foxes have a really diverse diet. They are expert hunters, catching rabbits, rodents, birds, frogs and earthworms as well as eating carrion. But they aren't carnivorous - they are actually omnivores as they dine on berries and fruit too. Urban foxes will also scavenge for food in dustbins, and often catch pigeons and rats.

Fox cubs enter the world deaf, blind and dependent on their mother's milk, much like domestic dog puppies. The cubs start eating solid food at around four weeks old and are usually completely weaned by the time they are 12 weeks of age.

What can I feed foxes in my garden?

There is some controversy around feeding the foxes in your garden, but if you feed them in the right way, they can bring a huge amount of joy to your family.

Avoid:

- Trying to tame, touch or hand-feed foxes, especially in urban areas. As wild animals, they should be respected and deterred from becoming too bold. Many people are scared of urban foxes because they mistake their inquisitive behaviour for aggression.
- Putting out excessive amounts of food that could encourage foxes to become overconfident.
- Putting out food they can take away and cache. Offering something they can eat on the spot discourages them from digging up neighbours' gardens!

Leaving out food uneaten by foxes that could attract unwanted visitors like rats.

The bulk of a fox's diet is made up of meat protein, so the best things to feed your local foxes are cooked or raw meat, or tinned dog food. They are also fond of peanuts, fruit and cheese.

Foxes can be fed all year round but should follow a set feeding routine. This encourages them to return to your garden at a certain time to wait for their meal. Food

is less likely to be left standing, which in turn discourages rats.

Where do foxes live?

Foxes have been found to be in decline, with the population estimated at 357,000 in 2018. While the bulk of the UK's fox population lives in the countryside, a 2017 study found that the UK's urban fox population may be as high as 150,000.



Foxes are fantastic diggers and live underground in excavated burrows called dens or 'earths'. Foxes can live above ground too, especially if they can find a sheltered spot.

What noise does a fox make?

Foxes can make around 28 different sounds. Despite this, they are a mostly silent animal; calling is largely during the winter breeding season. You are most likely to hear one of two distinctive fox noises: the male dog fox's barking call and the female vixen's chilling scream.

A dog fox bark is a loud 'A-wool!' that sounds much like a domestic canine. They use this contact call to communicate with friends and rivals.

Vixens sound more like screaming humans! Their sharp 'Woooo!' rises and then tails off across the landscape, telling male foxes they are ready to breed.

If you are lucky enough to stumble across a countryside fox family or have foxes denning in your garden, you may hear the cubs. They make a playful 'Ack-ack-ack-ack' noise as they wrestle with each other.

What do fox markings and droppings look like?

The best places to find fox paw prints are in the mud or snow, in woods, wetlands and the wider countryside. These impressions can clearly be seen in the ground, complete with claw marks. Like dogs, foxes have one central pad surrounded by four toe pads, though fox prints are narrower than a dog's. Foxes also have a smaller, almost diamond-shaped central pad, with toe markings that sit higher up.

In some ways, fox paw prints also look similar to cat prints, but since cats can retract their claws, their prints don't have claw marks.

Fox droppings (or scat) are much easier to tell apart than dog droppings. Fox droppings are typically dark, long and squiggly, and tapered at one end - dog droppings can be much bigger and messier.

Fox droppings also tend to contain leftovers from their meals: undigested animal hair, crushed bones and even fruit pips. They like using them to mark their territory, so you are likely to see them out in the open. In the countryside, keep your eyes peeled around prominent tufts of grass, stones and logs. In urban areas, monitor the middle of your lawn!

Photography in Focus

In this series, John Hockey shares some tips

TEXTURE

Texture in photography has many meanings but in the main it refers to patterns, colours and depth of natural or man-made items to emphasise the surface of the item rather than the general scene.

Subject matter is easy to find – just look around you! For example, here is part of the brick wall of the tithe barn in Edlesborough:



This picture shows the lovely hand-made texture of the bricks in a pattern called English Bond.

Here is an example with a ‘normal’ shot of an old school in Wheathamstead and then what happens when you pick a small portion of the building to bring out the texture of the wall:



One rewarding option is to look for an unusually close-up view of an everyday object or one that picks out the structure of the subject rather than the general scene. Trees are a great source of subject matter as this shot of bark shows:



One thing to remember when you are going in close is that any movement of the photographer will easily blur the image, so if you are using a camera, a tripod might be sensible. When using your phone, try to steady yourself by resting on a solid nearby wall or post, and if all else fails, breathe fully out before you press the button!

When looking for good examples of texture, do not be put off by the mundane. Here is a picture I entered for the Totternhoe Garden Group show a few years ago. The theme was 'The letter S' and this close up of a tennis ball and its seam resting near the edge of the court is full of texture:



My message therefore when looking for texture is, as always, look around you...and go in close!

Next time: Cropping

Appledown Rescue and Rehoming Kennels



This handsome lad is Wolfgang Joop! A Rottweiler-X who was born in 2015. He is a very friendly, nice-natured boy who has responded very well to training while he has been with us. He needs a home with active owners who are willing to carry on with the training he enjoys and where any children are 16+. He would probably prefer to be an only pet. If you are interested in offering a rescue dog a loving home, please download an application form from our website where you will find information on the rehoming process. Our experienced staff make every effort to match the right dog with the right owner. Viewings are now by appointment only.

For adoption information and application form visit our website www.appledownrescue.co.uk

Appledown Rescue and Rehoming Kennels Harling Road, Eaton Bray LU6 1QY

01525 220383 or e-mail: appledown.kennels@btinternet.com

Website: www.appledownrescue.co.uk

Follow us on Facebook, Twitter & Instagram!!



Eaton Bray Cricket Club

Est 1914

**2 senior teams
FCCL Saturdays**

**1 Senior team
Beds Sunday League**

**6 Junior teams at U9, 2xU11,
2xU13 and U15**

**Come and join a progressive family
club. For more information please
follow us on Facebook & Twitter
@EatonBrayCC**

**Enjoy your cricket with
Eaton Bray in 2020**



J Able bathrooms DESIGN - SUPPLY INSTALLATION

We have suites in a wide range
of styles to suite your budget.

Please ring for a home
consultation and quote.

All building, tiling, and electrical
work included.

07891 449077

W: www.jablebathrooms.co.uk
E: ableplumbing@hotmail.co.uk

Restaurant Style Japanese Miso Noodle Soup

My favourite recipes are those which look great, taste amazing, and require little or no effort to make. This noodle soup meets all those criteria. It's healthy, full of goodness and will bring a smile to your table during the darker months. The vegetables are fully interchangeable - feel free to use whatever you can get your hands on. The dish also still works without miso paste, even though it does add a lovely richness to the flavours.

Serves 2 people

1 litre good quality vegetable stock

1 tbsp miso paste

200g fine dried noodles or similar (I often cheat and just chuck in the pre-cooked ones you find in the fresh aisle in supermarkets)

2 filets of salmon, skinned and sliced diagonally into three pieces

2 garlic cloves, crushed and chopped

1 thumb of ginger, peeled and grated

Handful sugar snap peas

Handful mushrooms finely sliced

1 small leek, finely sliced

Vegetable oil

Light soy sauce

Cook the noodles as per the packet instructions then drain and chill them. If you are using pre-cooked noodles, there's no need to cook them again.

Place the noodles in the base of two large round serving bowls.

Boil up your vegetable stock and stir through the miso paste. You want to keep this stock hot and ready to serve.

In a hot pan, drizzle in some vegetable oil and quickly fry the vegetables, garlic and ginger. Leave them with a good crunch, you don't want to overcook them.

Add in a few drops of soy sauce, mix the vegetables one last time, and then share the vegetables between the two bowls, placing them on the noodles.

Pour a little more oil into the pan and fry off



the salmon pieces. Give them a bit of colour but, again, don't overcook them as they will continue to cook in the serving bowls.

Pop the salmon on top of the vegetables and divide up the vegetable stock into both bowls.

Leave the bowls sit for a minute, just for the boiling stock to heat through the noodles and serve, accompanied by chilli oil or chilli sauce, for a bit of extra optional kick.

*BBC Three Counties
Radio presenter and
cook, Nick Coffey*



LOCAL HERALDRY

BY JOHN HOCKEY

In this series, we take a look around local towns and villages to find interesting and unusual heraldry.

HERALDIC BADGES

Coats of arms were not the only indicator of a specific person or family in days gone by. Many royal persons and influential knights also used what are called Heraldic Badges. These were often a simple form of identification relating to the individual and could be employed when the use of the whole coat of arms or achievement was inappropriate. Often they were chosen at random, i.e. just personal preference or they could be taken from an incident in the families' past or even be based on puns, all to aid identification. Wherever these signs were seen they would indicate the ownership or tenure of a particular armigerous

person.

For example, inns where local retainers congregated took the identity of their

patron by painting his badge above the door. Many pubs continue to reference the coat of arms of a family – such as The Bridgewater Arms in Little Gaddesden, which shows the arms of the Egerton family (Earls and Dukes of Bridgewater) but there are also quite a few royal badges used as pub signs. The White Hart was the badge chosen by King Richard II and, for example, is displayed on the pub's sign at Sundon (see photo).

The Swan or White Swan was the badge of the Bohun family and is also quite a common pub sign (a

nearby example is to be found in Northall).

Locally, the Rose and Crown badge can be seen displayed on pub sign, glasses (and as shown here, on their calling card) at the charming inn down Vicarage Lane in Ivinghoe. It refers to the Tudor dynasty established after Henry VII (Head of the House of Lancaster) married Elizabeth of York. The white rose within the red rose elegantly symbolises the joining of those two families.

The use of badges died out somewhat in late Tudor times and by the time of Queen Victoria, armigers tended to use crests displayed on all manner of items including servants' buttons and liveries in place of the once common Heraldic Badge.

Next time: Heraldry at British History Online



Make your house a home with
blinds and awnings from

**VANSAR
BLINDS**



www.vansarblinds.co.uk

Find us on Facebook



- Free No Obligation Measuring And Quotations
- All Blinds Made To Measure
- Choose In The Comfort Of Your Own Home Or Workplace
- Family Run Business
- Large Range Of Quality, Affordable Fabrics And Colours To Choose From

01525 220477 or 01582 699565 sales@vansarblinds.co.uk

JoAnn Latus School of Dance



- Ballet, Tap and Modern classes for children aged 3 and upwards
- Adult Ballet classes starting in the New Year
- Professionally trained teachers and safeguarding policies in place
- Regular exams, shows and theatre trips

Classes held in Buckinghamshire,
including Eaton Bray on Tuesday
and Friday evenings

For more information contact JoAnn Latus:
Tel: 07800 518654

Email: info@jolatusdance.co.uk

Web: [@jolatusdance](http://www.jolatusdance.co.uk)

McTimoney CHIROPRACTIC



Margie Craib BSc BHSI DC AMC MMCA
Human and Animal Treatments

Ashridge Farm, Ringshall, Berkhamsted, Herts HP4 1ND
Telephone: (01442) 842729

General Chiropractic Council Registration No. 293

Spinney Landscapes & Gardening Services

All Aspects of Grounds Maintenance

Leaf Clearance • Grass Cutting/Scarifying
Patios & Driveways • Pressure Washing
Weed Control • Tree Work & Wood Chipping
Fencing • Snow Clearing • Mini Digger Hire

Tel: 01525 839622 Mob: 07876 500292

Email: spinneylandscapes@gmail.com

www.spinneylandscapes.com



Curiosity Creativity Community

Dagnall C of E school is a nurturing and inclusive learning community, situated at the foot of the Chiltern Hills.

Ofsted 'good' (June 2018):

"A positive learning environment where pupils are exceptionally well cared for and nurtured."

SIAMS (July 2018):

"The school is outstanding at meeting the needs of all learners."

We offer a unique, family feel where children benefit from small class sizes and personalised learning.

We provide a creative environment where children feel safe to challenge themselves and to develop their love of learning.



Spaces available

To arrange a visit please call:

01442 842473

or visit: www.dagnall.bucks.sch.uk

email: office@dagnall.bucks.sch.uk



We are a nurse-led home care provider committed to delivering the very highest standards of care.

Support from our dedicated team gives you or your loved one the peace of mind and confidence to be able to continue living at home.

Family-owned and managed, we are independent and do not belong to a national chain or franchise. We are registered with the CQC, number 1-1499072841.

To talk to us about your requirements please call Helen Yates RGN on 07920887414 or 01442 843064 or email helen.yates@yourownhomecare.co.uk



www.yourownhomecare.co.uk

NG AUTOS

MAKING YOU AND YOUR CAR HAPPY

**CAM BELTS • MOT'S • MOT REPAIRS • HEAD GASKETS
AIR CONDITIONING • RECOVERY/BREAKDOWN
DIAGNOSTICS SERVICING • BRAKES • SUSPENSION
CLUTCHES • GEARBOXES • TYRES • WHEEL BALANCING
WHEEL ALIGNMENT COLLECTION & DELIVERY**

CALL NICK OR GARY

01525 220850 OR 07972 198615

**SPARROW HALL FARM, LEIGHTON ROAD,
EDLESBOROUGH LU6 2ES**



Reception



Service Bays



MOT Station



DM SECURITY

Commercial & Residential Alarm Systems

- CCTV • Access control • Intruder Alarms • Locks
- Electrical Installations • Fuse Boards • Re-wires

John Dorman: 07483 872017 Chris Mahoney: 07801 552113
 20 Slicketts Lane, Edlesborough, Dunstable, Beds, LU6 2JD

D.A. Windows, Doors & Conservatories

Emails: dawindows@live.co.uk
mimcavinder@hotmail.com

Telephone: 01582 485443
 Mobile: 07807 798387

- Installation of UPVC windows, doors and conservatories
- Composite doors and side lights – choice of design and colours
- Replacement glass units and window maintenance

QUALITY PRODUCTS
QUALITY WORKMANSHIP
QUALITY PRICES
 Contact us for a quotation or to discuss your requirements

ACCREDITED MEMBER OF THE INCORPORATION OF PLASTIC WINDOW FABRICATORS AND INSTALLERS

GOVERNMENT APPROVED CERTASS REGISTERED CONTRACTOR REG. NO. 001634

Leighton Aerials

Established 1970

For all your aerial and satellite needs call Colin on

01525 374742



FIND OUT WHAT YOUR HOME IN DUNSTABLE IS WORTH



Use My FREE Instant Online Valuation Tool

If you're thinking of moving, start by getting a **Hometrack Valuation Report** to see how much your home is worth.

Hometrack is the UK's largest automated valuer of residential properties and is relied upon by 13 of the 15 top UK high street lenders.

This report normally costs **£19.95** and includes **ALL** recent house sales near you!

Lacey Brooks
Branch Director



Get your **FREE** online valuation report now at: **www.EweMove.com/Dunstable** or call: (24/7) **01494 292 359**



EweMove respects any existing sole agency agreement already in place with another agent.



The Gentleman Gardener

Let your local RHS qualified gardener make your garden beautiful, from simple garden maintenance to total redesign of your garden.

Please call Barry on
01525-222451 or
07541196384

to pop round for a free chat.



**A McClelland
Pest Control**
FOR FAST RESPONSE CALL:
Mobile 0777 494 8415
Office 01582 872158



*specialists in: wasps - bees - ants
hornets - fleas - cockroaches - bed
bugs - pigeons - magpies - rabbits
rats - mice - moles - squirrels
foxes - mink - feral cats*

UNMARKED VEHICLES
For further information please call or email
amcclellandpestcontrol33@gmail.com



Parties Wedding Receptions Stage Productions
Fitness Classes Business Meetings Beer Festivals
Film Shows Club Meetings Keep Fit Quiz Nights

Eaton Bray Village Hall

Capacity for 220 People Parking for 70 Cars Meeting Room Countryside Views
Bar Facilities Kitchen Facilities Full AV Facilities Baby Changing Wheelchair Access



For bookings or enquiries call: 07975 797 202
email: bookings@ebvh.co.uk

www.ebvh.co.uk



WAGGING

wonderful dog grooming

Here to take care of your mucky pup!

Your local dog grooming service in Eaton Bray

1-2-1 care for your dog

NO cages!

07580 343396

www.waggingwonderful.co.uk

info@waggingwonderful.co.uk

James B Chadburn FBHI

Fine Antique clocks & Barometers

Specialist in repairs & restorations.

Valuations & clock finding service.

Advice & assistance on formation & disposal of private clock collections.

Quality clocks/barometers Bought & sold.



Telephone 01525 221165

Mobile 07790 000629

E-mail: info@jameschadburn.com



Contact James direct on:

Mobile: 07771 698 151

Office: 01582 343 123

Email: james@andertonelectrics.co.uk



See our feedback on Check a trade

www.checkatrade.com/andertonelectrics



- ✓ Free quotations, no obligations
- ✓ Emergency Work – day or night
- ✓ Domestic or Commercial
- ✓ A name you can trust



www.andertonelectrics.co.uk



All Aspects of Pressure Washing

- Roofs Cleaned and Coated
- Block Paving Refurbished
- Driveway / Patio / Pathway Cleaning
- Building Fascia / Cladding Cleaning
- Gutter Vacuuming / Fascia & Soffit Cleaning
- Graffiti / Chewing gum removal
- Conservatory Cleaning



0800 298 5883
www.greatoutdoorscleaning.co.uk



TODDINGTON

INDEPENDENT FINANCIAL ADVICE



DO YOU NEED FINANCIAL ADVICE?

We can help you to review your current or proposed,

Mortgages, Insurances, Pensions & Investments, Equity Release, Inheritance Tax, Wills and Trusts, or a general review of your current position?

'As a mortgage is secured against your home, it may be repossessed if you do not keep up the mortgage repayments. The financial conduct authority does not regulate tax and estate planning or will planning'

Unlike some TV adverts we don't charge a fee for equity release, so no broker fees added to your loan! 'Equity released from your home will be secured against it'

LOCAL OFFICE: Toddington

Contact: Philip Hadlow
Tel/Fax: 01525 874100
Mobile 07768 277 532
info@toddingtonifa.co.uk
www.toddingtonifa.co.uk

Free Will with Investments & Pensions placed through us of over £50,000 and within 6 months of investment
Talk to us for a free initial consultation

Toddington Independent Financial Advice Ltd is authorised and regulated by the Financial Conduct Authority.
Registered office: 1 St John's Barns, Griffin Farm, Conger Lane, Toddington, Bedfordshire, LU5 6BT
Registration Number: 760687 Company Number: 9931606

EDLESBOROUGH



NEW HOME, NEW PRICE

£450,000

INCENTIVES AVAILABLE

3 BEDROOMS
EN-SUITE TO MASTER
STUDY
CARPORT

READY FOR OCCUPATION

HOUSEHOLD
estate agents
— New Homes —

Call 01582 477077
now to arrange your appointment
email dunstable@house-hold.co.uk

Council in ‘Listening Mode’ as Post-16 Educational Transport and Home to School Transport Policy Consultation Starts

A public consultation launches today to hear the views of parents and residents on how Buckinghamshire Council can continue to improve its educational transport policy.

The consultation forms part of a review into the Council's overall Home to School Transport Policy and associated Post-16 Transport Policy Statement, following the changes made after the previous review of the policy in 2018/19.

Buckinghamshire’s Home to School Transport Policy and Post-16 Transport Policy Statement set out how the Council provides transport to schools and other educational settings for 0 – 19 year olds and up to 25 years for those with special educational needs and disabilities (SEND).

The current Post-16 Transport Policy Statement applies a charge to families of 16–18 year old students with SEND who receive Council educational transport, as a contribution towards the overall cost of transport.

The charges for this transport for the current academic year 2020/21 have been paused due to the impact of Coronavirus; however this is an ‘exceptional’ decision, meaning that the charging element of the Policy Statement is set to resume in September 2021 for the academic year 2021/22.

The consultation launched today gives families a choice of three potential options to consider for how educational transport for eligible students aged 16–19 with SEND can be organised and paid for. These options are:

- Families receiving Council transport using the current distance banded model of charging, with some improvements;
- Families having a choice of either receiving a sum of money paid directly to them to make their own transport arrangements (known as a personal transport budget), or paying an annual fee to receive Council transport;
- Families who have post-16 SEND students who are eligible for transport would be offered a personal transport budget; Council transport would be offered in exceptional circumstances for an annual fee.

The Council is also asking for views on proposals to update the content of the Policy and Statement by providing clarification and more detail to some areas. This aims to provide clearer information and guidance to students and families so they can make informed choices about their school transport.

The engagement and public consultation process

The public consultation runs for eight weeks, closing on 7 December 2020. Ahead of the consultation, the Council has talked with parent groups and other key stakeholders to understand their views as well as taking into account all feedback received over the last 12 months.

Anita Cranmer, Buckinghamshire Council Cabinet Member for Education and Skills, said: “We are committed to supporting our children and young people to have access to educational opportunities at the setting that’s right for them, and a key part of that is

assisting families to make informed choices about their educational transport.

“Although this review will not make major changes to our overall Home to School Transport Policy, by reviewing the Policy and the Post 16 Transport Statement now, we can make improvements that incorporate the feedback we have received up to this point.

“We also want to give young people and families of students who are aged 16–18 with special educational needs and disabilities some options to consider for how transport will be arranged and paid for from September 2021.

“Personal transport budgets have been in existence for some time, particularly in adult care services, but their use is now growing in school transport in many areas across the UK. When you consider the huge amount of choice, freedom and flexibility that personal transport budgets provide for families, we wanted to include these as part of the options in the consultation, giving families a good range of choice.

“We are very much in listening mode at the moment, so if you'd like to help shape our future policy for educational transport, please go to the consultation web page and take part. We really do want to hear your views.”

To find out more and take part in the consultation, go to the consultation web page: yourvoicebucks.citizenspace.com/schools/htst-2021-consultation

Why Do Leaves Change Colour and Fall Off in Autumn?

by Helen Keating courtesy of the Woodland Trust www.woodlandtrust.org.uk

Autumn is often a time of outstanding beauty. We're treated to a final burst of colour before the onset of winter. And some years, that colour is more spectacular than ever. Find out why.



Why do leaves change colour?

Leaf colour comes from pigments. These are natural substances produced by leaf cells to help them obtain food. The three pigments that colour leaves are chlorophyll (green), carotenes (yellow) and anthocyanins (reds and pinks).

Why is autumn colour better some years?

The depth of colour is influenced by the blend of chemical processes and weather conditions.

- Cold nights: low temperatures destroy chlorophyll so the green leaf fades to yellow, but if temperatures stay above freezing, anthocyanin production is enhanced and the leaves take on a red colour.
- Dry weather: sugars become concentrated in the leaves, more anthocyanin is produced and consequently leaves are redder.
- Bright sunny days: although the production of new chlorophyll stops in autumn, photosynthesis can still occur on sunny autumn days, using the remaining chlorophyll. Sugar concentration increases, more anthocyanin is produced and the leaves are redder.

Why do trees lose their leaves?

The beginnings of leaf drop, also known as abscission, start when a layer of cells is formed between where the leaf stalk joins the stem. This layer, known as the abscission

layer, is formed in the spring during active new growth of the leaf.

In autumn, hormones within trees begin to change. The most notable is auxin. During the active growing season, production rates of auxin in the leaves are consistent with the rest of the tree. As long as these rates are steady, the cells of the abscission layer remain connected, which in turn, keeps leaves attached.

But as days shorten and temperatures cool, auxin production in leaves starts to decrease. This triggers cellular elongation within the abscission layer. The elongation of these cells creates fractures, allowing the leaf to break away from the plant. The leaf is finally blown off by the wind or falls from its own weight.

What are the benefits of leaf fall?

The benefit of shedding leaves is that trees can preserve the moisture in their branches and trunk, instead of drying out and dying. And a tree without leaves is in a state of dormancy and needs less energy to remain alive.

Leafless trees are also better able to tolerate winter storms as strong winds can move through the branches more easily.



Smiling is Infectious

by Spike Milligan

Smiling is infectious,
you catch it like the flu,
When someone smiled at me today,
I started smiling too.

I passed around the corner
and someone saw my grin.
When he smiled I realised
I'd passed it on to him.

I thought about that smile,
then I realised its worth.
A single smile, just like mine
could travel round the earth.
So, if you feel a smile begin,
don't leave it undetected.
Let's start an epidemic quick,
and get the world infected!

St Mary's 100 Club

The lucky prize-winners are:

September 2020

1st prize – Patricia Costin

2nd prize – Estelle Marshall

3rd prize – Patricia Quartermaine

October 2020

1st prize – Theo Gray

2nd prize – Martin Hayden

3rd prize – Rodney Latham

Nigel's Thoughts

Methodist Minister



Dear Friends,

The season of mists and mellow fruitfulness is upon us and the gratefully celebrated (but socially distanced) Harvest Festivals are over.

At this time of great uncertainty we all need to discover how to place our anxious (and sometimes harmful) thoughts in the context of a bigger picture.

A period of reflection as the autumn days shorten can help us hugely.

There is a growing body of literature on the beneficial effects of reflection outside among God's creation. The sheer beauty and intricate complexity of all the inter-relationships within soils, plants and animals – 'all creatures great and small' – is a tonic to the weary or worried soul.

From clouds to those silhouettes of trees and hedgerows so well emphasised in a November sunset after a clear day. Reflections from water surfaces are also endlessly fascinating and therapeutic - from puddles to ponds, to lakes, rivers and oceans.

With the widespread use of digital phones and cameras, capturing quality pictures of such natural and ever-changing scenes has never been easier, and cannot fail to nourish us inwardly and help to improve our well-being.

It has been said that God has written two books that we should read together – the Bible and creation. Consciously taking time to pause and read both can help us experience immediate relief.

May I challenge readers to take a pocket copy of the psalms from the bible out with them (or print some from biblegateway.com), and read a psalm somewhere in a favourite countryside location? I'm sure that this would be of help, to instil inward calm, and to orientate our minds into a less frazzled and fearful place. It might also be likely to stimulate us to pray, and to trust in the mighty love of God who created, sustains, loves and cares for all that he has made, including you and me.

God bless,

✍️ Nigel



AUTUMN SCENES

Fat pigeons sit on post and rail,
On fence-tops to survey the vale,
Their bellies berry-bloated all –
A sign of plenty in the Fall!

Autumn to contemplate the past,
Prepare for winter's icy blast,
To pause, to thank, enjoy the view,
Eat berries as the pigeons do.

Sad humans contemplate short days,
Their spirits dampened by the haze
Of autumn mists and drizzling skies –
Far cries from spring and summer highs.

Draw strength to help those less endowed,
Thank God for fields as yet unploughed,
And nurture seeds of hope for spring
The season's cycle round to bring.

The future – winter, colder yet
And shorter, darker days beset
Unless the place is snowfall-blessed,
And ice-bound sunshine smiles its best.

We need the autumn to reflect,
Slow down, regroup, discern, detect
Priorities, and then to prune
All surplus for best growth next June.
EJW, 28.10.'07



Edlesborough Baptist Church

God is good! The most famous verse in the whole Bible is probably John 3:16, which tells us that ‘God loved the world in this way: He gave his one and only Son, so that

everyone who believes in him will not perish but have eternal life.’ (John 3:16 CSB)

How amazing is that!? How could you love someone so much? How could you, in fact, offer forgiveness so great that all one’s sins could be forgiven, and the slate wiped clean, as it were? You see, we as people are not as good as we like to think. Certainly, times such as we are in show the kindness and generosity, and yes, some would say, goodness, of people. But that goodness is often marred by the things we so often say and do, even to those closest to us.

But God, who knows all about us, showed his goodness, not in ignoring our sin problem, but in dealing with it- because the Lord Jesus died on the cross, his death paid the price for the forgiveness of all who trust in him. God is good, yes, and God is just.

Every Sunday, we meet at the Baptist Church, and praise God for his goodness. By the time you read this article, it will be early November, and your thoughts may be drawn already to the impending season of Advent and Christmas. We do not know exactly what this Christmas season will look like. It will probably be very different to what we are used to- but we will still celebrate God’s goodness in sending His Son, the Christ of Christmas to bring us into a right relationship with God, our Father.

Our prayer is that which was expressed in the Ancient Advent hymn which seems strangely pertinent in this year of global pandemic:

O come, bright morning star and cheer

Our spirits by Your Advent here.

*Dispel the long night’s lingering gloom
And pierce the shadows of the tomb.*

This Advent and Christmas season, I invite you to join us as we celebrate God’s goodness in sending His Son, the Lord Jesus. **Every Sunday from the 29 November, we will have an All-Age Family service at 3pm. You are especially invited to our Community Christmas Celebration on 13 December at 3pm, for which we have lots of exciting plans. Due to ongoing restrictions, we have a limited capacity, so you must book at the following link: <https://forms.gle/M6U2iYfjtK7tuU69>**

I hope to see you there! May God bless you, and fill you with a great awareness of his goodness during this challenging season.

I would love to hear from you. You can email me at gbcepastor@gmail.com or if you prefer to ring, give me a call on 01525 222064.

✍️Pastor Alister King

Edlesborough Baptist Church

**Pastor: Alister King
gbcepastor@gmail.com**

All are welcome to our 11am service every Sunday

**Keep up to date by visiting:
www.edlesboroughbaptist.wix.com/home**

Find us on Facebook @gbce2014

£1275 Raised

Our wonderful coffee morning went ahead even in these difficult times and it was amazing. Thank you to everyone who braved the cold and the wind to come along and enjoy our outdoor socially distanced World's Biggest Coffee Morning.

We had to restrict many of our usual fundraising activities but that did not deter anyone from giving to help raise money for much needed cancer support. All charities have suffered this year and so we were immensely grateful to St Mary's for letting us use the churchyard, everyone who loaned gazebos and a marquee, those brave souls who assembled and took them down, all our bakers, our very own barista and the intrepid waitresses. It was encouraging to see the community join together even if it had to be in groups of six - maybe next year we will be allowed back indoors.

Sheila Banks

Macmillan Cancer Support Fundraising



Placed Atop a Wall

Placed atop a wall
I glove, gave love
When autumn came to call

When winter's whitest cloak arrived
It froze all and tiny, tiny balls of snow
Bewelld your fingers five

At Halloween I kept you warm
You ruminated while pumpkins illuminated
The window sill's smooth form

Shaken loose I think I saw
Icicles dripping and young girls skipping
Along the High Street raw

November the fifth – bonfire night!
Remember? Remember hot soup?
I saved your little fingers grouped
Around the mug so tight

Do you miss me, miss me, Miss?

Now February's rain does fall
I just lie sodden, forgotten
Placed atop a wall

by John Hockey



**Me: Alexa, what's
the weather going to
be this weekend?**

**Alexa: Why? Where
do you think you're
going?**

Council to Move Ahead with Ivinghoe Freight Zone.

Buckinghamshire Council has announced plans to move ahead with the implementation of the Ivinghoe area 'freight zone', after some delays due to the coronavirus pandemic.

The scheme, to reduce HGV traffic in the Cheddington, Ivinghoe and Mentmore areas, sits within defined boundaries, east of the A418, north of the A41 and west of the B489. Work to draft the necessary Traffic Regulation Orders needed for the zone is now scheduled to start in mid February 2021, when formal public consultation will take place. Subject to the feedback received, the scheme could be fully operational by spring 2021.

Essential works to strengthen the Brownlow bridge on the B488 have already started and these are expected to be completed by the end of November.

Public engagement on the concept of the freight zone took place last March and was widely supported by local residents, businesses and community groups. It included dialogue with parish councils, local councillors, and businesses, along with drop-in exhibition events in Ivinghoe and Wing and a survey which received 332 responses.

Buckinghamshire Council Cabinet Member for Transport Nick Naylor said he was delighted to announce the news. "I'd like to have got on with things quicker, however COVID-19 restrictions have affected our planning with council officers and resources redeployed to help support the vulnerable and those at highest risk.

"But now I'm delighted we're back on track and that the Ivinghoe area is set for its freight zone. Once drafted, the TROs will be subject to statutory public consultation so people can have their say on all the detail before final implementation. We also need to liaise with colleagues in Hertfordshire and Central Bedfordshire Councils as some of the signage will need to be sited in their areas," he added.

The Orders will include a 7.5 tonne weight restriction on vehicles travelling through the zone. There will be an exception for vehicles travelling to destinations within the zone, which means deliveries and collections for local homes and businesses can continue unaffected.

Monitoring in November 2019 showed an average of 254 HGVs per week passed through the proposed zone, heading for destinations further afield, around 47% of the total HGV traffic in the area.

Local ward councillor and Wing and Ivinghoe Community Board Chairman Anne Wight added, "This is great news. The 'freight zone' would give us that balance between allowing those HGVs that need to come to the area and discouraging those that just pass through. Potentially this scheme could see lorry movements reduced by close to 50%, considerably reducing the negative impacts on local residents, buildings and the environment."

MEETING PLACE AVAILABLE

Does your leisure group/voluntary organisation need premises for your regular meetings?

Edlesborough Methodist Church, centrally located on the corner of Cow Lane opposite The Green, has accommodation that might suit your purpose.

Please contact 01525 223093 for further details.



City & Guilds

**Leighton
Plumbing & Heating**

Oil Boilers

Serviced & Repaired

01525 385250
07774 567472

Email - leighton-plumbing@ntlworld.com
Website - leightonplumbingandheating.co.uk

Please see our reviews on
boilerjuice.com / myboilerservice.com

Oftec registered & insured

Phasels, Billington Road, Leighton Buzzard
LU7 9HH

Crittercare

Dog walking & pet sitting

We look after any animal from

Hamsters to horses

Prices start from £6 per day

Tel: 07756930814

Email: crittercare142@hotmail.com

Or find us on Facebook @crittercare142

Laptop & Computer

Server, Printer, Apple, Setup, Repairs,
Data recovery, Internet, Wireless, Network,
Virus infection, Home/Office computer problems.

Services from £40.

Your local IT support, 7 days services, we visit you

No Fix - No Fee

Qualified, Experienced

PClaprepairs@gmail.com

01525 306316 – 07925 338435



**FREE INITIAL
CONSULTATION**

**ALL ACCOUNTING,
PAYROLL AND TAXATION
SERVICES COVERED**

Specialising in New Business Start-Ups

- Fixed Fee Quotes
- Unlimited Email and Telephone Support
- Back Office Solution

(dealing with your back office accounts function
enabling you to focus on the rest of your business)

Please contact us for more information...

Gable End, Sparrow Hall Business Park, Leighton Road, Edlesborough, LU6 2ES

Call us on... 01525 229 539

enquiries@rileyaccounts.co.uk • www.rileyaccounts.co.uk

[@RileyAccounts](https://www.instagram.com/rileyaccounts) • Also on [f](https://www.facebook.com/rileyaccounts) [in](https://www.linkedin.com/company/rileyaccounts)

"YOUR LOCAL ACCOUNTANT"



Stoten Gillam
chartered accountants
chartered tax advisers

**Our aim is to provide an outstanding
professional, cost effective and
friendly service**

- ✓ Established over 50 years
- ✓ Traditional values with forward thinking and modern technology
- ✓ Full range of business and personal accountancy and tax services
- ✓ Latest cloud software
- ✓ Free initial meeting



Tel: 01582 608601
99 High Street South,
Dunstable, LU6 3SF

Contact us today:
enquiries@stotengillam.co.uk
www.stotengillam.co.uk
[@stotengillam](https://www.facebook.com/stotengillam)

toni's tootsies

mobile foot health care

-  **Fungal Infections**
-  **Ingrowing Toenails**
-  **Callus/Hard Skin**
-  **Cracked Heels**
-  **Nail Reconstruction**
-  **Verrucas**
-  **Nail Trimming**
-  **Corns**



Toni Nash is a fully qualified Foot Health Practitioner based in Slapton, Bucks... and she's ready to take your Call!

07484 749393
 tonistootsies@gmail.com
 www.tonistootsies.co.uk

CDM Builders Ltd

07984086029

- GENERAL BUILDING
- NEW HOMES
- EXTENSIONS
- CONSERVATORIES
- ALTERATIONS
- BRICKLAYING
- GROUNDWORK
- PATIOS
- DIGGER AND/OR DRIVER FOR HIRE

With over 20 years experience in the building trade

All aspects of work undertaken by our own professional tradesmen to a very high standard

Please contact Clive for a free quotation
 T: 01525 222605 M: 07984086029
 Email: Clive.munt@hotmail.co.uk

GENERALMECHANICALSERVICESLTD

VEHICLE SERVICING AND REPAIRS



- MOTs • MOT REPAIRS • SERVICING
- DIAGNOSTICS • TRACKING • AIR CONDITIONING
- TYRES • CAMBELTS • COLLECTION & DELIVERY
- WELDING & FABRICATION • BATTERIES

All vehicles - all mechanical work!

1 HONEYWICK LANE, EATON BRAY, LU6 2BJ
 reception@general-mechanical-services.co.uk
 www.general-mechanical-services.co.uk



01525 222876



Peace of mind for motorists.

All Trees & Hedges

Reliable & friendly service • Family run business
Competitive prices • Qualified advice • Fully Insured

Tree work undertaken

Tree felling • Precision dismantling • Crown reduction
Crown thinning • Crown lifting • Formative pruning
• Stump grinding • Stump removal
Deadwooding • TPO / conservation area work

Hedge work undertaken

Hedge reduction • Hedge planting • Hedge trimming
Shrub clearance • Hedge laying

Other Services

Grass Cutting • Fencing • Green Waste Recycling • General
Garden Maintenance • Tree Lighting • Logs / Kindling

CALL NOW ON:

07701 094 934
01525 220 823

E: info@alltreesandhedges.com

W: www.alltreesandhedges.com

WHITE WATER

EXTERIOR CLEANING SPECIALISTS

Driveway & Patio Cleaning

"We use an innovative, biodegradable method that eliminates dirt & kills mould, blackspot & algae, sanitising the surface. The results last 4 to 6 times longer than pressure washing alone."

- We also clean:
- Conservatories
 - Decking
 - Windows
 - UPVC
 - Solar Panels

01525 234120 | 07807 973871

email: info@white-water.co.uk

www.white-water.co.uk



Frustrated with Home Technology?



Then contact us to solve your home technology problems. We can help with:

- WiFi/Broadband boosting or extending
- Smart TV and Wireless speakers
- Smartphone, PC and Printers
- Smart Home installations



Tel: 01296 534537

www.thetechnologydoctors.co.uk



fitness 4 fun



Get those muscles working! Tone and strengthen arms, legs, bums and tums – you'll look and feel great.

Why not give it a go? Only £6 per week for one hour of fun fitness. Pay-as-you-go, come when you can.

Come along and join our friendly group.

Everyone welcome.

No need to book – just show up.

What: Fitness4Fun with Kay

Where: Edlesborough Memorial Hall

When: Every Friday, 10:00-11:00 am

OAKSTONE

ARCHITECTURAL DRAWINGS AND PLANS

Oakstone Ltd specialises in design, drawing and building plans for:

- Planning applications
- Building Control approval
 - Residential
 - Commercial
 - Agricultural
 - Listed Building Consent

To arrange a FREE initial consultation please contact:
ash@oakstoneltd.com or call **07884 268079**

For more information about previous projects undertaken and what we do please visit:
oakstoneltd.com



...for all your pest solutions

Peter Tong
(RSPH Level 2)

01525 220653
07958 669706

Email: peter@nimbypest.org.uk
www.nimbypest.org.uk



JACKSON
CONSTRUCTION UK

PASSIONATE ABOUT YOUR PROJECT

07527 710 119

dave@jacksonconstructionuk.co.uk
www.jacksonconstructionuk.co.uk

Extensions & Conversions
Kitchens & Bathrooms
Driveways & Patios
Fencing & Landscaping



Lisa Arch Home Styling

Transform your home with my Dunstable - based home makeover service — designer looks tailored to fit your taste and budget.

07528 220311

Lisaarchhomestyling

lisaarchhomestyling@outlook.com



Pampered Pups

Mobile dog groomers

Call to book an appointment

07394 672646

pampered.pups8@gmail.com

www.pamperedpupsuk.com

We come to you

No Mess

No Stress



Grooming Washing Drying Nail Clipping



ARCHITECTURAL DESIGN
CONSULTANCY

Residential extensions and
conversions

Retail and Commercial
Free initial consultation

Planning and Building Control
Approvals Obtained

O: 01442 842 917

M: 07795 557 911

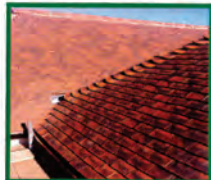
E: info@peakadc.co.uk

CLARIDGE & HALL BROS LTD

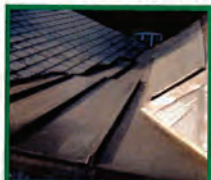
ROOFING DIVISION

Quality work at competitive prices in Harpenden
and the surrounding areas.

WE SPECIALISE IN ALL TYPES OF ROOFING WORK



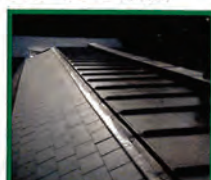
Handmade clay roof tiling



Lead work and Spanish slating



Handmade clay tiles roof in progress



Finished lead work and slating

Please telephone:
Graham Parkins for advice or a
FREE QUOTATION on **01582 840201**
www.roofingharpenden.com

**CLARIDGE
& HALL BROS LTD**
MARKYATE est 1890
01582 840201

Flex & Stretch Class



**Stretch the entire body.
Target primary muscle groups
surrounding the hips, hamstrings
& upper back including breathing
techniques.**

**Everyone welcome
No need to book – just turn up
£5 pay as you go
Tuesdays 11am till 12 noon
Edlesborough Memorial Hall**

London Luton Airport

With an increase in aircraft in the area and in particular when the wind is from the East, we are getting some aircraft flying directly over the village to join the flight path into the airport. If you are disturbed by the traffic flying over the village, there is a complaints hotline number: 01582395382. This is an airport number where you can register your concerns. It is important to do this if we are to reduce these disturbances over our village.

If you need to complain about Heathrow flight noise the number is 0800 344 844.
Email: noise_complaints@heathrow.com



Come for Coffee at St Mary's, Eaton Bray

**For a warm welcome and
a cheering cuppa
each month in
St Mary's Church
Eaton Bray
10.30am - midday**



**1st Saturday of each month
(except July - 2nd Saturday)**



A committee run playgroup set in Dagnall Village Hall for children aged 2 to school age

We operate five mornings a week from **9:15 - 12:15**



Ofsted Comments

- Staff are consistently kind and caring which supports children to develop confidence and resilience
- Teaching is consistently good and children's safety is given the highest priority
- Children learn good manners and know how to treat each other with respect



If you think your child would be happy here please phone our Playgroup Leader, Ann Tobin on 07816 358 342
www.dagnallunderfives.co.uk

La Maison Bespoke Furniture

We build to your design.

Tables & Chairs

Bedroom Furniture

Kitchens

Floorboards



Made to measure solid wood furniture

Handmade carpentry

Fitted or Freestanding

Family run business for over 30 years

Visit our Website: www.bespokefurniture18.com

Email: astonint@btinternet.com or Phone: 07791 805159

Bat-man to the Rescue

ZSL Whipsnade Zoo's very own superhero has nursed a pair of native bats back to health after they were found injured while nesting on the zoo grounds.

The two native brown-long-eared bats, a species protected within the UK, were found unable to fly on Zoo grounds by ZSL staff. On close inspection of the small bats, a mother and pup, Zookeepers noticed that the mum was weak but still clinging onto her young. ZSL Whipsnade Zoo keeper Tyrone Capel said, "Bats carry their pups under their wings as they fly and hunt, which can be an exhausting activity, mum was struggling to carry her young during the heatwave this August and lost weight rapidly."

Capel - who is also a registered bat carer for the Bat Conservation Trust - then took the pair under his wing, nursing them back to health from his own living room after discovering the pup weighed just 3 grams, the same weight as a penny, he explained, "The pup was around half the weight of mum so they had a lot of weigh to gain to get back to full strength, they were eating nearly 40 mealworms."

The bats, who's ears are nearly as long as it's body, spent four weeks in Capel's care before being released back onto Zoo ground.

"The pup was released early evening, a few days after mum, she'd mastered flying very quickly after mum left the nest which is very typical in the wild as they become more independent." Capel continued.

"Bats are a protected species in the UK and an incredibly important part of the eco system promoting biodiversity, so it's great we were able to save this pair and release them back into the wild. We have a large number of brown long-eared bats here at Whipsnade so I'm sure we will be seeing this pair again roosting up in the Zoo come this winter"

The UK's largest Zoo, a 600-acre nature haven, is home to thousands of native species including eight species bats. The pair were both released back onto the international conservation grounds.

ZSL Whipsnade Zoo reopened to the public on Monday 15 June after an unprecedented three months of closure due to the coronavirus lockdown. The loss of income put the charity zoo under huge financial pressure as they continued to provide the highest level of care for their animals. Now open to limited numbers only, ZSL, the international conservation charity behind the Zoo, is calling on the public to help ensure they stay open by booking a ticket, joining as a member or donating to ZSL.



How Things Have Changed

WHIPSNADE

1931 - 1952
COMING OF AGE

Near DUNSTABLE, BEDS.



Extra attractions throughout the year

Open Daily (including Sundays)
from 10 a.m. till Sunset, or 7 p.m.
(7.30 p.m. Sundays) whichever is
the earlier.

Adults 2/6 Children 1/-

MODERN LICENSED RESTAURANTS
and CAFETERIAS. POPULAR PRICES



Edlesbray Dog Walking & Pet Care

	Half Hour	Hour
One Dog	£6	£10
Two Dogs	£10	£15

Pet Care £5 per visit

Contact Lucy
07977 711350

edlesbraydogwalking.co.uk

Holiday Home to Let Bridport Dorset



Sleeps 7 - Fully equipped

Close to all amenities

Visit: www.bills-house.com

enquiries@bills-house.com

or tel. 07850 601007



Life is like a camera

Focus on what's important

Capture the good times

Develop from the negatives

And if things don't work

you can always take

another shot!

shared by silversurfers.com



Stay & Play Toddler Group

Musical Monkeys

Eaton Bray Village Hall
10-11.30am on Fridays

£4.50 for one adult and child
£1 for extra children/adults
0-6 months free



Are you looking for a Reception place for your child?

Contact us if you are - our Ofsted rating is 'Good' with Early Years graded 'Outstanding'. We are a small, nurturing church school with high expectations.

Children settle quickly due to our small classes and high quality teaching.



Please contact the school office if you would like to come and visit our school.

**Dagnall C of E
Main Road South
HP4 1QX
Tel: 01442 842473
office@dagnall.bucks.sch.uk
www.dagnall.bucks.sch.uk**



What to do in the Garden in November

November is here - the leaves are falling and it's getting colder and wetter. As autumn turns to winter, your main jobs in the garden are mostly about protecting plants and structures from the wilder weather to come. There's still some planting to do if you want to keep growing - you'll find all those November sowing and growing jobs here.

Timely Tips

As the weather starts to get more wintry, your garden needs some protection:

- Insulate your outdoor containers from frosts, using hessian or bubble wrap held in place with garden twine.
- Raise pots off the ground for the winter by using bricks or 'pot feet', to prevent waterlogging.
- Encourage hungry birds into your garden by investing in bird baths and bird feeders. Our feathered friends will keep pest numbers down and bring joy on a bleak winter's day.
- Protect roses from windrock by pruning them by one-third to half their height. This will stop them swaying in strong wind and prevent roots coming loose in the soil.

In the flower garden

Here are your main jobs to do in the flower garden this November:

- Remove fallen leaves from around the base of any rose bushes which suffered from blackspot or rust this summer, to reduce the chance of reinfection next year.
- Continue to lift dahlia tubers, begonias and gladiolus corms to store dry over the winter months. Remove the dead foliage before storing.
- Cut back the yellowing foliage of herbaceous perennials, and lift and divide overcrowded clumps to maintain their vigour.
- Cut a few stems of holly with berries for making Christmas garlands. It's early, but now's the time to do it, before the birds eat all the berries. Stand them in a bucket of water in a sheltered spot where birds can't take them.



In the vegetable garden

Here's what to do in the vegetable garden this month:

- Lift parsnips after the first frosts, when their flavour will have sweetened.
- Prepare a perennial vegetable bed which can be planted up with rhubarb crowns and asparagus crowns.
- Prepare a bed for planting autumn garlic. Improve heavy soils with organic matter before planting.
- Place a scaffold plank on the ground along the main access route into your plot to allow access without compacting the soil as you walk across it.
- Spread fresh manure across the surface of your vegetable beds to rot down over winter.

- Build a raised bed to take the bending out of vegetable growing.
- Stake top-heavy brassicas and draw up some soil around the base of stems to prevent wind from rocking the plant and causing damage to the roots.
- Check stored onions and garlic and remove any rotting bulbs immediately. The neck of the bulb is usually the first area to rot. Try using onion bags to improve air flow.
- Check stored potatoes and remove any that are rotting. Use hessian sacks to store your potatoes as this will allow the crop to breathe.

In the fruit garden

- Divide mature clumps of rhubarb once they're dormant.
- Plant currant bushes while they're dormant.
- Plant raspberry canes now for a delicious home-grown crop.
- Tidy up strawberry plants - cut off any dead leaves and remove runners.
- Prune pear and apple trees anytime between now and February.
- Don't prune your plum trees now as they will be susceptible to the silver leaf fungus - wait until midsummer.
- Apply grease bands to the trunks of fruit trees to prevent wingless female winter moths climbing the trunks and laying their eggs in the branches.
- Remove the top netting from fruit cages as heavy snow in winter will make it sag.
- Check fruits in storage and promptly remove any showing signs of disease or rotting.

Looking after your lawn

- Aerate your lawn now - there's still time to do it before winter sets in. You can either use a lawn aerator or simply insert a garden fork at regular intervals and lean it back slightly to let air in.
- Continue to clear fallen leaves off the lawn to keep it healthy.
- Set your lawn mower to a higher cut-height for winter.
- Edge your lawn. This is easy to do in the winter months once beds are clear. Lawn edging creates a neat and tidy appearance and makes maintenance easier throughout the year.

In the greenhouse

- Clean and maintain your greenhouse. Replace damaged glass and clean it thoroughly, washing the glass, floor and staging with horticultural disinfectant to kill any overwintering pests and diseases.
- Protect greenhouse plants by insulating with sheets of bubble wrap attached to the inside of the frame, to reduce heat loss. Remember to ventilate, particularly after watering.
- Install solar lights in the greenhouse so you can still get out there on dark winter evenings to check your plants.
- Be careful not to overwater plants as the winter approaches. Little and often is the key.



Other jobs about the garden

- Protect greenhouse plants by insulating with sheets of bubble wrap attached to the inside of the frame, to reduce heat loss. Remember to ventilate, particularly after watering.
- Reuse spent compost from annual container displays as a mulch on the garden.
- Build a cold frame to protect young plants from extreme winter weather.
- Sweep up debris and fallen leaves that harbour overwintering fungal spores and create hiding places for slugs and snails.
- Lift and relocate plants when they are dormant
- Create compost bins for collecting fallen leaves and dead plant material.
- Collect leaves up for making leaf mould as a soil conditioner. Oak, alder and hornbeam will rot down in a year but beech, sycamore, horse chestnut and sweet chestnut will take a couple of years to compost.
- Shred fallen leaves to help them rot down even more quickly. A quick way to do this is to gather leaves on to the lawn and mow them with a rotary mower that has a collection box.
- Start preparing a bonfire with twigs and prunings - cover them with plastic so they remain dry for better burning later. Make sure you check for hedgehogs before lighting your bonfire.
- Net ponds to prevent leaves falling into them. If you need to clear pond weed, lay it next to the pond for a day after removal, to allow wildlife to escape back to the water.
- Clean out water butts and let the autumn rains refill them. Install a new waterbutt ready for next year.
- Give dry soil one last good watering before the ground freezes.
- Use the last of the dry weather to paint sheds and fences with preservative before the winter arrives.
- Give evergreen hedges a final trim before the bad weather sets in, so they look neat and tidy for the winter.



From your armchair

- Take stock of this year's garden and make a few notes or sketches for next spring. Reflect on what grew well, what failed miserably, and what changes you will make next year. You will be surprised at how useful these notes can be when you start ordering seeds and plants for next year!
- Take photos of where herbaceous plants are located before they die back so you don't damage their roots during a winter dig.
- Place your orders online for fruit trees, fruit bushes and perennial plants. These can be planted between now and springtime.

Information courtesy of Thompson and Morgan www.thompson-morgan.com

Dagnall Weather Station (AONB)

Weather Conditions for September 2020

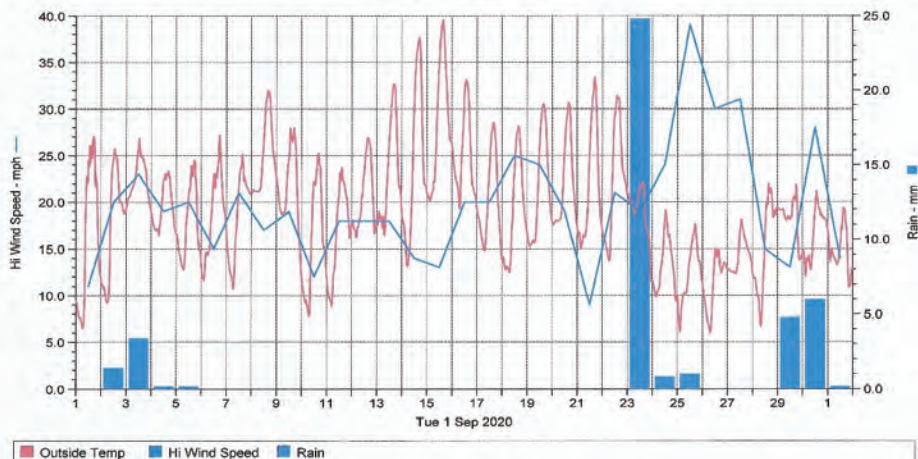
Elevation: 450 ft - Latitude: 51° 50' 13" North - Longitude: 0° 33' 34" West



September got off to a mixed start with a bright day on the 1st followed by a few days of showers. With largely sunny days from the 6th to the 22nd. The first half of this period we didn't see any rain. We were then blessed with the so-called 'Indian Summer' I had been looking forward to the temperatures soared to reach 29.7°C on the 15th. It turned cooler after that and, on the 23rd, we recorded 24.79mm rain. The temperature then dropped significantly and the wind reached gusts of 39mph. Unsettled conditions and lower temperatures remained until the end of the month. September was mostly dry with only 42.6mm of rain which is 42% of the 12 year average.

	High	Date/Time	Low	Date/Time
Temperature:	29.7°C	15 Sept 15.30	4.4 °C	26 Sept 07.30
Mean Temperature	14.5°C			
Dewpoint:	19.6°C	25 Sept 17.00	2.0 °C	26 Sept 07.30
Humidity:	95%	7 days in Sept	40%	14 Sept 16.00
Barometer:	1029.3 mb	17 Sept 09.00	992.6mb	24 Sept 18.30
Wind Speed	39mph NW	27 Sept 15.00	Months avg.	5.0 mph
Wind Chill:	24.9°C	15 Sept 16.30	2.7°C	8 Sept 07.00
Dominant Wind:	W			
*Rain Days: 9(T), 9(R)		Wettest Day 23 Sept	24.79mm	0.976 ins
Monthly Rain:	Total	Sept 2019	* 42.6mm	1.677 ins
Yearly Rain:	Total	9 Month	492.4 mm	19.386 ins

Dagnall Weather Station AONB



For weather data 24 hours a day, updated every 15 mins, visit: www.dagnallweather.co.uk. If anyone has a question, comment or wishes to contact me please email: david@dagnallweather.co.uk or telephone: 01442 843883. Dagnall weather now has an app for your iPad & iPhone! Just go to the apple store, search for Wunderstation and follow the instructions to Dagnall Weather Station. Now updated every minute.

Salvation Sound



As the new Salvation Army Officer of Eaton Bray I have looked forward to writing this article in the Focus Magazine hoping that when you see me around the village you will stop to chat.

How important it is in the present climate to 'Stay Connected'. We are told on the television or radio to stay connected with each other. We do this by telephone conversations, letter writing, sending cards, and meeting up (socially-distanced of course!) with friends; at the same time trying to keep within the guidelines that are given to us nearly every day. There are other avenues of connecting also; social media, you tube, twitter, google, zoom, face time, WhatsApp – all of these are important ways to be able to find out how we all are.

It is suggested that we have the latest technology on our phones or computers, but for some of us we do not have this technology at our fingertips and so the old-fashioned ways of writing, and phoning are our way of staying 'connected' with each other.

If we do not stay connected how easy it is to lose touch with each other. I have been very fortunate to move around the country and therefore have many friends. Some of these are 'online friends' and others are friends who I hear from more spasmodically.

Whatever ways in which you 'stay connected' it is important to do so during these difficult times of COVID 19.

We can 'stay connected' to God through prayer and reading our Bible. God has been with us through these difficult times and will continue to be there for us. We can be encouraged because we read in the Bible that God is our companion and we can speak to Him whatever time of the day or night and He will answer our prayer.

May God bless you through this coming month.

✍️ Allison Gaudion

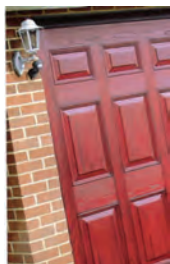


Premier Garage Doors & Gates



Quality Garage Doors

- ✓ Superb choice of designs in steel, timber and fibreglass
- ✓ Any size door made to your requirements
- ✓ Large selection of spares & fast repair service available
- ✓ New or existing doors converted to automatic
- ✓ Professionally fitted by own expert craftsmen
- ✓ Prompt free estimates & advice
- ✓ We cover all areas



(EST 1984)



Unit 7, Sparrow Hall Farm, Leighton Road, Edlesborough LU6 2ES

01525 220212

www.premiergaragedoors.co.uk



JANES FLOORING

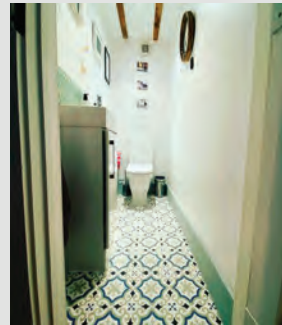
Carpet

Vinyl

Laminate

LVT

Karndean



FREE ESTIMATES

BORROW SAMPLES

FULLY FITTED SERVICE

UPLIFT & DISPOSAL

MOVING OF FURNITURE

www.janesltd.co.uk

JANES 4-8 High Street Edlesborough LU6 2HS tel: 01525 220208