

# FOCUS

August/September 2020



*Photo courtesy of [www.badgertrust.org.uk](http://www.badgertrust.org.uk)*

The local village magazine just for Us!  
Eaton Bray, Edlesborough, Northall & Dagnall  
Focus is online at [www.thefocusmagazine.co.uk](http://www.thefocusmagazine.co.uk)

# *The White Horse* *Eaton Bray*

Market Square  
Eaton Bray  
Beds  
LU6 2DG  
01525 220 231  
[www.eatonbraypub.co.uk](http://www.eatonbraypub.co.uk)



## From the horse's mouth

*We're open again and looking forward to seeing you.*

*Every precaution has been taken to ensure your safety and the safety of our staff*



**Please support  
your local pub**

*Eat, Drink and relax  
at The White Horse*

Due to COVID19, the Focus issues for April to July 2020 issues were not printed.

Online versions were produced and can be viewed at:

[www.thefocusmagazine.co.uk](http://www.thefocusmagazine.co.uk)

Thank you to all the contributors, distributors, advertisers and readers for continuing to support the magazine.

## NORTHALL BAPTIST CHAPEL

### Chapel Lane, Northall

(just beyond the 30 speed limit signs on the road towards Leighton Buzzard)

Everyone is welcome to our Sunday worship each week between 11am and 12.30pm including tea/coffee and time to talk together.

For more information contact:

John Hazell 01525 218142

Email [northallchapel@btinternet.com](mailto:northallchapel@btinternet.com)

Web: [www.northallbaptistchurch.org](http://www.northallbaptistchurch.org)

There has been a Baptist Chapel in Northall for more than 200 years. Today we continue to seek to worship God, serve him in our daily lives and support and encourage one another in the difficult and the joyful times.

## The Focus Magazine Committee

**Editor:** Sally Siddons

34 Wallace Drive, Eaton Bray 221733

**Email:** [sallysid@hotmail.com](mailto:sallysid@hotmail.com)

**Dagnall Representative:** Richard Bamford

31 Dunstable Road, Dagnall 01442842344

**Circulation Manager:** John Plater

41 Church Lane, Eaton Bray 221095

**Treasurer/Leaflet Enquiries:** Ken Coates

10 The Nurseries, Eaton Bray 220868

**Business Advertising:** Sally Siddons

34 Wallace Drive, Eaton Bray 221733

**Design and Layout:** Tracey Moren  
(Moren Associates Limited) 01525 229695

**Printed by:** Priory Press

Dunstable 01582 699851

Copy for publication to the Editor by the

**10th of the month**

*Focus accepts no responsibility as to the accuracy or content of any advertising or articles published in 'this' magazine, neither do they reflect the opinion of members of the Committee.*

*© Articles published in Focus may not be reproduced without permission.*

**Focus would like to remind contributors that the deadline for articles is the 10th of the preceding month**

*Kindly Note*

*If the event you wish to advertise falls in the first week of the month, it is advisable to get the details into Focus a month earlier. The magazines are not delivered from the printers until the first of the month, therefore it takes a few days for them all to be circulated throughout the village.*

*✍️ Editor*

**Focus is online at [www.thefocusmagazine.co.uk](http://www.thefocusmagazine.co.uk)**

# Village Diary Aug/Sep 2020



## Weekly

- Mon-Fri (term time) Eaton Bray Pre-school, Eaton Bray Lower School, 01525 220468
- Mon-Fri (term time) Dagnall Under 5's, Dagnall Village Hall, 9.15am - 12.15pm, Mrs Ann Tobin 07816 358342
- Mon-Fri (term time) Edlesborough Pre-School, Edlesborough School, 01525 220431  
manager@edlesborough.bucks.sch.uk
- Mon-Thu (term time) Totternhoe Pre-school, mornings, Totternhoe Lower School, Michelle Urbanowicz on 01582 668841
- Mondays Pilates, 10.45am, Totternhoe Memorial Hall, Lisa: 07832 230774
- Mondays Dagnall Community Choir, All Saints Church 7.45 – 9.45pm
- Mondays (term time) Movement and exercise classes with a dance flavour, Northall Village hall 2-3.30. Contact Jan 01442 864271.
- Mondays Curtain Call Youth Theatre 5-7.30pm, Eaton Bray Village Hall, Gavyn 01525 220525
- Mondays Curtain Call Theatre Group - 7:30-10:30pm Eaton Bray Village Hall, Sheila - sdtwinkletoes@yahoo.co.uk
- Mondays KFPA ISTD Classical Ballet classes, 3+yrs, 4.15pm, Edlesbrough Memorial Hall, [www.kfpa.co.uk](http://www.kfpa.co.uk)
- Mondays Cubs (8-10 ½ years old), 6.30pm - 8pm, 1st Eaton Bray & Edlesborough Scout Hut, High Street, Edlesborough. Contact Liz Coates 01442 842550
- Mondays Yoga, 6:45pm, Edlesborough Memorial Hall, contact 07837 727302
- Mondays Barre, 8pm, Edlesborough Memorial Hall, contact 07837 727302
- Tuesdays Pilates, 10-11am, Eaton Bray Village Hall, Nicky Roussou 07861 162680
- Tuesdays Totternhoe Baby & Toddler Group, 9.30-11.30am, St. Giles Church Hall, Ruth Allen, 01525 222468 or 07796 265174 or email ruthallen002@gmail.com
- Tuesdays Tap & Ballet Classes, JoAnn Latus School of Dance, 4-8pm, Eaton Bray Village Hall, 07800 518654
- Tuesdays Beginner's Boxercise, 6-7pm Dagnall Village Hall, Josh Thompson 07456 574405 or jtpinfo@gmail.com
- Tuesdays Coffee Morning, Bring & Buy, Table Top Sale, 10-12noon, Salvation Army Hall, Booth Place, Eaton Bray
- Fortnightly Pilates, 8pm, Northall Village Hall, Lisa: 07832 230774
- Wednesdays Northall & District Age Concern Wednesday Club, 10am - 3pm, Northall Village Hall, Contact Barbara on 07854 230243
- Wednesdays Caterpillars Baby and Toddler Group 10am to 11:30am, Grace Baptist Church, Moor End, Edlesborough, £1 per family unit, Contact Alister 07572 395687
- (term time) Pilates 6.45 & 7.45pm, Dagnall Village Hall, Andrea on 07855 138005 or andrea@naturalpilates.co.uk
- Wednesdays Art of Ju Jitsu martial arts class, Eaton Bray Village Hall, 7 -7.45pm ages 6-15yrs
- Wed (term time) Art Courses, Whipsnade Village Hall, 9.30am – 12.30pm. Lorna Moore 07896 619660
- Thursdays Yoga, Northall Village Hall, 11.30am-1pm 01525 377542
- Thursdays Jazzercise, 9.30-10.30am, Eaton Bray Village Hall, Angela Veryard, 01525 715208
- Thursdays KFPA Street dance classes 4+yrs 4pm, Edlesborough Memorial Hall, [www.kfpa.co.uk](http://www.kfpa.co.uk)
- Thursdays Tae Kwon-do, Dagnall Village Hall, 5.45-7.30pm 07813 755785
- Thursdays Clubbercise 7.30 - 8.30pm. Eaton Bray Hall - Gina Flitton 07846421756
- Thursdays Beavers (6 to 8 years old), 6.15-7.30pm, 1st Eaton Bray & Edlesborough Scout Hut, High Street, Edlesborough. Contact: ebebeaverleader@ebescouts.co.uk
- Thursdays Explorers Scouts (14-18 years old), 8pm-9.30pm, 1st Eaton Bray & Edlesborough Scout Hut, High Street, Edlesborough. Contact Simon Betts, lionheartesu@hotmail.co.uk
- Thursdays Intermediate Boxercise, 7.30-8.30pm, Dagnall Village Hall, Josh Thompson 07456 574405 or jtpinfo@gmail.com
- Thursdays Eaton Bray Methodist Church Social Afternoons, 2 - 4pm, All Welcome

**Please get in touch with the relevant organisation to check if sessions have restarted**



# Village Diary Aug/Sep 2020

Thursdays	Retro Line Dance Class. 11.15am to 12.45pm. Eaton Bray Village Hall. Beginners welcome. <a href="http://www.jukeboxjunction.co.uk">www.jukeboxjunction.co.uk</a> info@jukeboxjunction.co.uk 07864212171
Thursdays	Mixed Ability Yoga Class, 11.30am to 1.p.m. Northall Village Hall, Contact Dee Lock on 01525 377542
Fridays	Keep Fit class, Edlesborough Memorial Hall 10 - 11am
Fridays	Tap & Ballet Classes, JoAnn Latus School of Dance, 4-8pm, Eaton Bray Village Hall, 07800 518654
Fridays	Stay & Play toddler group, 'Musical Monkeys' at the Eaton Bray Village Hall, 10-11.30am, £4.50 for one adult and child, £1 for extra children/adults, 0-6 months free
Fridays	Scouts, 10 ½ to 14 years old), 7.00-8.30pm, 1st Eaton Bray & Edlesborough Scout Hut, High Street, Edlesborough. Contact Mark Owen, 07899 892344, ebescoutleader@ebescouts.co.uk
Fridays (term time)	"Little Luvvies" baby ballet classes 10am-11.30am. Contact Emma Whittemore on 01525 376124
Fri (term time)	Art Courses, Whipsnade Village Hall, 9.30am – 12.30pm. Lorna Moore 078 9661 9660
Saturdays	Jazzercise, 9.30-10.30am, Eaton Bray Village Hall, Angela Veryard, 01525 715208
Saturdays	KFPA Musical Theatre classes 4+yrs <a href="http://www.kfpa.co.uk">www.kfpa.co.uk</a> , 10am, Edlesborough Memorial Hall
Saturdays	Bootcamp Fitness, 9-10am, Dagnall Recreation Ground, Josh Thompson 07456 574405 or jtptinfo@gmail.com
Sundays	Sunday Worship at 11am and 6pm Edlesborough Baptist Church, Moor End, LU6 2FL Contact Alister on 07572 395687
Sundays	Karate for kids & adults, 4-5:30pm, Eaton Bray Village Hall, Contact 07500 007779
<b>Monthly</b>	
1st Monday	Eaton Bray Parish Council Meeting, 7.30pm, The Coffee Tavern (except Jan-2nd Monday)
1st Monday	Eaton Bray W.I. Meeting, 7.30pm. Eaton Bray Methodist Church Hall. Contact Margaret Jones on 01525 220991
1st & 3rd Mon (ex. Bank Hols)	Knit 'n Stitch at Edlesborough Village Hall, 1:45pm to 3:45pm. Contact Heather Westwood (01525 839083)
2nd Mon	Film Society, Sep to May, 2pm, Eaton Bray Village Hall, Graham Chappell 01525 220883
1st & 3rd Tues	Dunstable & District Orbit (social and charitable) Club meet at Dunstable Rugby Club at 8pm. For details contact 01525 222441 or 01582 755147
1st Saturday	St. Mary's Church, Eaton Bray Coffee Morning & Plant Sale, 10:30am - 12 noon
1st Sunday	St. Mary's Edlesborough Open Days, 2-5pm, May to September inclusive
2nd Monday	SilverLink, 2.30-4.00pm, Grace Baptist Chapel Edlesborough – activities, talks, friendship & refreshments for the over 60s
2nd Tuesday	Dunstable & District Local History Society meeting, 7.45pm, Methodist Church Hall, Dunstable (opposite Wilkinson)
2nd Tuesday	Edlesborough W.I. Meeting, 7.30 pm, Edlesborough Memorial Hall. Contact Sue Bingham on 01525 222522
2nd & 4th Tues	Dagnall Church Welcome Club, 2-4pm, Dagnall Church. Contact Catherine Hayden 01525 220527
2nd Wednesday	St.Mary's Ladies Guild, 2pm, St.Mary's, Eaton Bray
2nd Wednesday	Eaton Bray & Edlesborough Lions Club, 7.30pm, The Coffee Tavern
2nd Thursday	CAMEO Coffee, tea & chat, 10am-12noon, Edlesborough Methodist Church
2nd Saturday	Workshops Dynamic Yoga 9.30-11am £10 Eaton Bray Coffee Tavern, Keira 07936 693696
3rd Thursday	Edlesborough Parish Council Meeting, 7.30pm, Memorial Hall
3rd Sunday	Lunch club 11.30 to 2.00pm, Eaton Bray Village Hall, Chris Hewitt 222288
Last Saturday	Coffee Morning, 10:00-12 noon, Edlesborough Methodist Church

**Please get in touch with the relevant organisation to check if sessions have restarted**



## **EDLESBOROUGH SURGERY & PITSTONE VILLAGE HEALTH CENTRE 2020 FLU CAMPAIGN**

This year, due to Covid 19 pandemic, we anticipate our Flu clinics to be looking very different.

We are hoping the flu clinics will still be run in October, assuming the delivery dates of our supplies are not affected. These clinics will need to be run in a safe and socially distanced manner, taking into account all necessary guidelines at the time; therefore we are unable to set the dates for these clinics at the moment.

Please keep an eye on our surgery website **edlesboroughsurgery.co.uk** and our **Edlesborough Surgery Facebook** page for up to date details.

We also ask that you please advise friends and neighbours if they don't have internet access.

Thank you for all your support during this difficult time.

### **24th Eaton Bray Village Hall Quiz**

As we all know, things ain't what they used to be! So it is with much regret that we are going to have to cancel the Quiz that we had booked for October 24th. I will be emailing all those who have already booked, with the new date for next April, when we hope things will be easier to manage. Obviously, we will let you all know in Focus when we have settled on a date.

As you can imagine, the most we could get in the hall would be about 12 tables with 4 in each team. Not only would it not be fun, I'm not sure how team organisers would be able to decide which 4 to ask to be members of their team. Me thinks, that would be some hard decision to make. A bit like choosing which of your nearest and dearest to form a "bubble" with!

Well, I am really sorry to have to do this again but let's all keep ourselves safe and hopefully see you all in 2021.

If you want to get in touch, my phone is 07974 715222 or email [ross.bagni@btinternet.com](mailto:ross.bagni@btinternet.com).

# Village Info



**EDaN Community Transport**  
Peter Williams: 01442 842506

## Village Hall Booking Contacts

**Northall:** Lorna Cabbage Tel: 07857 318696 [www.edlesborough-pc.gov.uk/nvh](http://www.edlesborough-pc.gov.uk/nvh)

Email: [northallvhbookings@gmail.com](mailto:northallvhbookings@gmail.com)

**Eaton Bray:** Norman Lee Tel: 07975 797202

Email: [bookings@ebvh.co.uk](mailto:bookings@ebvh.co.uk) Website [www.ebvh.co.uk](http://www.ebvh.co.uk)

**Dagnall:** Liz Coates 01442 842550 & Trish Owen 07762 151364

Email [DVH\\_Bookings@outlook.com](mailto:DVH_Bookings@outlook.com)

**Edlesborough Memorial Hall:** Penny Pataky, Tel: 01525 229358

Email: [manager@edlesborough-pc.gov.uk](mailto:manager@edlesborough-pc.gov.uk)

## Police Contact Numbers...

*making neighbourhoods safer together*

**General Assistance (Recommended Number): 101      Emergency: 999**

### Bedfordshire Police (Eaton Bray)

Leighton Buzzard Police Station/Kathryn Horgan: 01582 473411

Typetalk: 18001 01582 473418

Email: [LPT.LeightonBuzzardLinslade&Rural@bedfordshire.pnn.police.uk](mailto:LPT.LeightonBuzzardLinslade&Rural@bedfordshire.pnn.police.uk)

### Thames Valley Police (Edlesborough, Dagnall & Northall)

PCSO Jackie Dodson

Email: [NHPT@thamesvalley.pnn.police.uk](mailto:NHPT@thamesvalley.pnn.police.uk)

## Defibrillator Locations

These units are registered with the Ambulance Services. To access them, please phone 999. You will be given the access code and the location of the unit will be confirmed. The defibrillator is easy and safe to use. The units can be found on the outside walls of the following locations:



**Dagnall:** Red Lion Public House

**Eaton Bray:** The Coffee Tavern

**Northall:** The Swan Public House

**Edlesborough:** Edlesborough Memorial Hall & Baptist Church, Summerleys



## Helpline: 07930987064

**Manned phone hours:**

**9am to 5pm, Monday to Friday**

(An answering service is available for out-of-hours calls)

Call us if you want help with getting to the surgery/hospital, collecting prescriptions, minor errands or d-i-y jobs, form-filling, walking your pet, on-line shopping support etc. or if you would welcome our befriending service.

*We help people of Eaton Bray and adjacent villages*

# **Eaton Bray with Edlesborough Parish News**

**Vicar: Rev'd Joy Cousins**

**The Vicarage, 11 High Street, Eaton Bray - Tel: 01525 220261**

**Curate: Rev'd Stephen Burge**

**Church Warden & Pastoral Matters: Catherine Hayden (01525 220527)**

**Reader: Gordon Gray (01525 220136)**

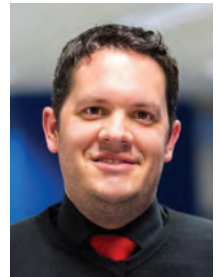
**Website: [www.stmaryseatonbray.org.uk](http://www.stmaryseatonbray.org.uk) Facebook: St Mary's Eaton Bray**

The Coronavirus pandemic and the subsequent lockdown has made me think a lot about the way we care for one another. At its height, it was hard to see the stresses and strains that those who were working in hospitals and care homes were under and like many around the country I went out and clapped to show my support for those working in healthcare. More than anything, I was full of admiration for the dedication of doctors, nurses, health care assistants and carers all over the country, and all over the world. In the reports on the news of doctors and nurses on the front line, there was a palpable sense of their sacrifice and their willingness to provide the best care possible, under considerable strain.

It has also been a great joy to see the way that people have been caring for one another. Our communities really have come together to help people in all sorts of way, from helping people to get their weekly shopping, delivering medicines for those who could not leave their homes, to giving people a quick phone call to those who may be worried and anxious, or just missing company. Most importantly, it has been uplifting to see the way that everyone, both young and old, have looked after one another when out and about, keeping physically distanced and wearing masks. This is, of course, something that we will continue to be doing, and it is a really visible sign of our love and respect for one another.

In his First Letter to the Corinthians, St Paul uses the image of the body to describe the way different people work together to help each another achieve a common goal. We all have a different role to play, but whatever our role is, we need to work together. He writes, "If one member suffers, all suffer together with it; if one member is honoured, all rejoice together with it." (1 Cor 12:26). In the last few months, we have really seen what working together really means - everyone playing their part to help combat the virus.

There is one type of caring that I have not mentioned yet: caring for ourselves. As the lockdown begins to ease, we will be given an opportunity to take stock of everything that has happened over the last few months. It has been a great shock for many of us, and we will need time to come to terms with it. It is important for all of us needs to take some time to look after and care for ourselves. We are no good to anyone, if we forget to look after ourselves too. As the summer comes, I hope that you all have a chance to relax, to enjoy the sun and sit out in the garden, an opportunity to recharge the batteries, to indulge in some recreation and re-creation: in rest we are made anew, ready to care for those around us, and take on our role as part of the larger body, working together to help those in need.



✍️ Rev'd Stephen Burge

## A Message From Joy

Sunday services are available on the website [www.stmaryseatonbray.org.uk](http://www.stmaryseatonbray.org.uk) from Sunday. It is very easy to use - simply press the button on the homepage. You can also access it via YouTube and the St Mary's Facebook page. As always, thanks to Stephen Axford for his wonderful music and to Stephen Burge for leading and producing the service.

It is always good to hear from you so do keep in touch.

With love and prayers,

✍️ Joy

### Services at St Mary's Church

**SUNDAYS :**    **8.00am**    HOLY COMMUNION  
                  **10.00am**    PARISH SUNG HOLY COMMUNION

**On Third Sunday of each month:**

**10.00am** – WORSHIP FOR EVERYONE a shorter, less formal service for families. (For anyone wishing to attend a service where Holy Communion is offered, there is a Family Communion at 10.30am at All Saints' Church, Dagnall, where visitors are assured of a warm welcome).

**WEEK-DAYS:**

**Wednesday: 10.00am** Holy Communion  
*EVERYONE WELCOME AT THESE SERVICES*

**In light of the current Coronavirus situation the Pastoral Care Team at St. Mary's, Eaton Bray welcomes your assistance in identifying any of our parishioners who might be sick or otherwise benefit from their support during this challenging time. Please contact Gaye Soule on 07807924218 (m) or send an email to [admin@stmaryseatonbray.org.uk](mailto:admin@stmaryseatonbray.org.uk) in this regard.**

## Thank You Edlesborough Pharmacy

Once again, we would like to thank the Pharmacy in Cow Lane. Even with COVID, they still provide an excellent service.

We moan about things far too much, so it is nice to praise where praise is due. Mital and his staff are brilliant! Thank you.





## Margaret Bashford

Margaret Bashford passed away peacefully after a short illness, aged 95 at the Lawns Nursing Home, Plymouth. Margaret lived for many years in Eaton Bray with her husband Paul before moving to Devon in 2012 to be close to her family. She will be sadly missed and remembered with love.

When reflecting on Margaret Bashford, who sadly passed away recently, I remembered she used to live in The Comp, Eaton Bray. Her husband, Paul, used to be a manager at the well known Wallace Nurseries. When this folded in the 1970s, Paul took over a small part of the business and grew plants which were sold on to some of the local garden centres. I wondered how The Comp got its unusual name. According to a street list website, the name is unique, it is the only street in the UK called The Comp. The following are some suggestions I received when asking the question on social media. Comp means to give for free so maybe The Comp was originally a bridle path used to ferry free produce from Eaton Bray to Totterhoe and vice versa. Maybe there were tolls on other roads but this one was free to use .

It's also a farming term for a type of cart.

The Roman's had a camp there, there was a Roman Villa in Totterhoe. Camp being changed to Comp.

Probably named after "composite" road surface or it originally had a compacted stone surface.

The other possibility is a derivative of "compound." There's quite a lot of Pound Streets all of which come from compound which most villages had to enclose stray farm animals.

## **Wednesday Club Harvest Auction**

It is with great regret that due to coronavirus the Wednesday Club Harvest Auction which is normally held in September is cancelled.



ESTABLISHED 1994

# UNICORN WINDOWS LTD

UNIT 3 YOUNGS INDUSTRIAL ESTATE  
STANBRIDGE ROAD, LEIGHTON BUZZARD  
BEDS LU7 4QB



**YOUR LOCAL HOME IMPROVERS**

- ✓ DOORS; COMPOSITE, ALI AND UPVC
- ✓ CONSERVATORIES
- ✓ ORANGARIES AND GLAZED EXTENSIONS
- ✓ CAT FLAPS/DOG FLAPS
- ✓ BI-FOLD DOORS
- ✓ PORCHES
- ✓ CLADDING
- ✓ REPAIRS - INCLUDING REPLACEMENT GLASS

- ✓ WINDOWS; UPVC AND ALUMINIUM
- ✓ SOLID ROOF/ROOF CONVERSIONS
- ✓ CONSERVATORY REFURBISHMENTS
- ✓ SOFFITS, FASCIAS AND GUTTERING
- ✓ LANTERN ROOFS AND SKYPODS
- ✓ FLUSH SASH WINDOWS
- ✓ SLIDING DOORS
- ✓ AND MORE..






**CONTACT US**

FOR MORE INFO OR TO ARRANGE YOUR FREE, NO OBLIGATION QUOTE

**01525 854272**

sales@unicornwindows.co.uk






# Carpet & Upholstery Cleaning

Professional & Local  
All work guaranteed

Powerful equipment extracts more water  
making it quicker to dry naturally

100% Guaranteed no chemicals left in carpet  
when dry therefore will not easily resoil  
& perfectly safe for children & pets

Recommendations account for 90% of my work

Absolutely no hard sell

Telephone Darren for a Free Quote

**DEEP-CLEAN**

**01525 851 811 & 07790 034818**

www.deep-cleaners.co.uk

Email: sales@deep-cleaners.co.uk

## Problem Solving:

Virus & Spyware Removal  
Internet & Email Assistance  
Fault Diagnostics  
Repairs & Upgrades  
Slow Running PC's

## Services:

PC & Mac Support  
Wired & Wireless Networks  
Data Recovery  
Install & Set-up  
Health Checks

## On-site Visits:

Office Hours &  
Evenings - by appointment

## Sales:

Desktops, Laptops & Tablets  
Printers & Peripherals  
Software

**For friendly advice call John Wallace**

**07968 536068 or 01525 261381**

**Email:** john@computamation.co.uk

**Web:** www.computamation.co.uk

9a Lower Way, Great Brickhill, Buckinghamshire. MK17 9AG

**Computamation  
Services Ltd  
Established. 1999**

*"Excellent  
experience.  
I nearly fell  
asleep whilst  
having my  
fillings done!  
Very reassuring  
- no rush.  
I was made to  
feel completely  
at ease.  
Thank you!"  
- R.R*



Edlesborough Dental Practice



**floss and smile**  
gentle dentistry



*"Without doubt  
the most  
competent,  
gentle & lovely  
dentist in the  
Northern  
hemisphere!  
I won't see  
anyone else.  
Thank you  
from a nervous  
patient."  
- M.B.*

**Edlesborough Dental Practice**

**Telephone: 01525 223175**

11 Cow lane, Edlesborough, LU62HT

[www.flossandsmile.co.uk](http://www.flossandsmile.co.uk)

**Get the Beautiful Smile You Deserve!**

**EMERGENCY TEXT TO : 07590035899**



The Clear Alternative  
to Braces



Implants

**General Family Dentistry \*Crowns \*Bridges \*Dentures \*Smile Makeovers**

**\*Tooth Whitening \*Tooth straightening \*Implants \*Botox**

**\*Hygienist \*Sedation \*0% Finance**



**Dentist :**  
Dr A. Johar  
GDC number : 111350

**Hygienist:**  
Mrs Jane Showder  
GDC number : 2344



For all your painting & decorating requirements  
 Domestic and Commercial  
 call Max for a free estimate with no obligation  
[maxbro@btinternet.com](mailto:maxbro@btinternet.com)

## Coffee Tavern



Large Hall	£6.00 per hour
Commitee Room	£3.50 per hour
Large Hall & Commitee Room	£8.00 per hour

**Bookings 01525 220891**

Stairlift, access ramp and free WiFi available



Moren Associates  
 Technology Services

## Technology Support for Home and Business

PCs, Smartphones, Tablets, Printers  
 Broadband, Internet, WiFi, Email  
 Security Guidance



Virus Protection & Removal  
 Upgrades & Installations  
 Data and System Recovery



Hardware & Software Troubleshooting  
 Home & Office Network Setup & Support



**01525 229695 (Edlesborough)**  
**support@morenassociates.co.uk**





# EcoTech Oven & Carpet Cleaning



- Non franchise family run business
- Eco-friendly Oven & Carpet cleaning
- Fully trained & insured technicians



**OVEN CLEANING FROM £45**  
**CARPET & UPHOLSTERY FROM £60**

*Call for a free quotation*



**01525 221922**



[www.ecotechovenandcarpetcleaning.co.uk](http://www.ecotechovenandcarpetcleaning.co.uk)

Find us on



[Checkatrade.com](http://Checkatrade.com)  
Where reputation matters

# *Dominic Woolcott* **Painter & Decorator**



- Internal & External
- Plastering & Coving
- Insurance Work
- 20 Years Experience
- Competitive Rates

**For a professional job call:**  
**01525 229682 or 07747 042879**



# P. DYER ELECTRICAL

*For all your Electrical & Testing & Inspection needs*

- Re-wires
- Testing & Inspection
- Security Systems/Lighting
- LED & Low Energy Lighting
- CCTV Systems
- PAT Testing
- Fuse Boards
- Fault Finding/Repairs

Fully insured, Part P registered, all work guaranteed.  
Fast, friendly, reliable, local electrician. For a free,  
no-obligation estimate, call Paul on:



**Tel: 01525 222109**  
**Mobile: 07850 682815**



**Lee Hutt**  
Heating & Plumbing Services

**Bathrooms**  
DESIGN & INSTALLATION

**TILING**

**HEATING**

**TAPS**

**Leaks**

**CALL OUTS**

**Free Estimates**

01525 222145    07971 559185

## Barry Cato Motor Repairs

Est. 1981

*Servicing, repairs and MOT's arranged*

**Workshop at:**

r/o Norfolk House Farm, Harling Road  
Eaton Bray, Dunstable, Beds, LU6 1QY

**Tel: 01525 221681 (workshop)**  
**07836 650015 (mobile)**

David John Harris



(Established 1992)

All Fencing Work • All Gates • Paving • Patios  
Driveways • Shingle • Hedge Setting and Cutting  
Grass Cutting • Turfing Specialist • Exterior  
Painting Service • Sheds Small Building Work  
Trees & Shrubs Supplied

**Tel/Fax: 01525 221745**  
**Mobile: 07889 143713**



**Steve the Mower Man**

**Steve Johns**  
 All mowers and garden machinery  
 repaired and serviced  
 Collection and delivery available  
**07720 828166**

**Will Kimberley**  
**Garden Services**  
**01442 255784**

Phone for a free no obligation written estimate  
[wkgardenservices@btconnect.com](mailto:wkgardenservices@btconnect.com)

- High hedges a speciality
- Fences erected and repaired
- General garden tidy up's
- In fact any job in the garden!

**GRASS ROOTS**  
**GARDEN MAINTENANCE**



TREE SURGERY, HEDGE PRUNING,  
 SELECTION SUPPLY AND PLANTING OF  
 TREES, SHRUBS AND HEDGES.  
 REGULAR MAINTENANCE/ONE-OFF JOBS  
 (Fully Insured)  
**Brian McMahon NCH (Arb)**  
**01525 221960**

**S M Reilly & Son Ltd**  
**General Builders & Contractors**



**Turning Your House into  
 a Home Since 1987**

All aspects of the building trade undertaken

- \*Extensions\*Hard Landscaping\*
- \*Windows, Doors & Conservatories\*
- \*Fitting of Aluminium Bi-fold Doors\*
- \*Kitchen & Bathrooms\*Drives\*
- \*Loft Conversions\*

**01525 221740 07970 637511**



**Flicks & Bangs**  
 HAIR SALON

.....

A warm, friendly salon offering a  
 wide range of bespoke hair services  
 for all the family. Feel free to pop in  
 for a complimentary consultation.

.....

**[www.flicksandbangs.com](http://www.flicksandbangs.com)**

.....

<b>Flicks &amp; Bangs</b>	<b>Opening Hours</b>
66 High Street	<b>Mon</b> Closed
Eaton Bray	<b>Tue</b> 9 am - 5 pm
Nr. Dunstable	<b>Wed</b> 9 am - 5 pm
Beds LU6 2DP	<b>Thu</b> 9 am - 8 pm
<b>01525 221252</b>	<b>Fri</b> 9 am - 6 pm
	<b>Sat</b> 8 am - 4 pm
	<b>Sun</b> Closed



01525  
851080

.CO.UK

07973  
167779

SIGNS

VEHICLE SIGNS

BOARDS & BANNERS

STICKERS

BUSINESS CARDS

PRINTED & EMBROIDERED

CLOTHING So Much More...

12 HARMILL IND EST LEIGHTON BUZZARD LU74FF

[www.pinstripes1995.co.uk](http://www.pinstripes1995.co.uk)

Join us on Facebook – PINSTripES 1995

## WASHING MACHINE REPAIRS

ALSO  
DISHWASHERS, TUMBLE DRIERS,  
AND ELECTRIC COOKERS



Call

**ANDERSON D.R.S.**

**01582 665764**

[www.andersondrs.co.uk](http://www.andersondrs.co.uk)

SALES AND RENTALS AVAILABLE

*Established over 20 Years*

# DUNCAN TOMBLIN

## TREE SURGEON

Forestry Contractor • Tree Felling

Crown Reduction & Thinnings

Deadwooding • Hedge Cutting

Stump Grinding • Site Clearance

Private Agriculture Fencing Contractor

Chipper & Stump Grinding Hire

Digger Hire

FULL PUBLIC LIABILITY INSURANCE

FREE ESTIMATES

*'The Best Choice For Your Tree'*

**TEL: (01525) 221946**

MOBILE: (07802) 410728

12 Greenways, Eaton Bray, Beds



*Patricia's Cuisine*

Catering For All Occasions

- Buffets, Dinners •
- Christenings, Weddings, Funerals •
- Promotions & Business Lunches •

*For Enquiries & Menu*

Meadside Farm, 104 High Street,  
Eaton Bray, Bedfordshire, LU6 2DP

**Telephone: 01525 222174**

[www.patriciascuisine.co.uk](http://www.patriciascuisine.co.uk)

# alto window cleaning

*For a professional service.....*

- Window cleaning
- Conservatory cleaning
- Fascia & gutter cleaning

**07876 594186**



“A wonderful  
place to be!”



# Eaton Bray Academy

Eaton Bray Academy is a friendly village primary school which caters for children aged 4 - 11 years of all abilities. Our Nursery provides education for children from the term after they are two.

Ofsted

Good  
Provider



© Photography by Carrie



**Tel: 01525 220468**

**Email: [admin@eba.ec](mailto:admin@eba.ec)**

**[www.eatonbrayacademy.co.uk](http://www.eatonbrayacademy.co.uk)**

# Smart<sup>®</sup> AUTOMOTIVE



EXPERTISE, QUALITY & EXPERIENCE  
EST 2003

## Car Bodyshop, Service Workshop & MOT Bay



MOT TESTING  
FOR ALL MAKES & MODELS

4 WHEEL ALIGNMENT  
& TYRE FITTING

SPECIALISTS IN COMPLETE  
CLASSIC CAR RESTORATION

DEALER TRAINED TECHNICIANS

EXTENSIVE EXPERIENCE IN  
PRESTIGE CAR PAINTWORK & REPAIR

ACCIDENT & VANDALISM DAMAGE

INSURANCE WORK UNDERTAKEN

MOBILE BODY REPAIRS  
ALLOY WHEELS - DENTS - BUMPERS  
CHIPS - SCRATCHES - SCUFFS

Fully equipped vans that come  
to your home or office

FREE COLLECTION & DELIVERY  
LOAN CARS AVAILABLE



**01582 664772 [www.smartautomotive.co](http://www.smartautomotive.co)**

Smart Automotive, Units 17 & 18 Icknield Way Farm, Tring Road, Eaton Bray LU6 2JX

SMART AUTOMOTIVE IS THE TRADING NAME OF SMART TOUCH (MK) LIMITED





# Friends of the Church on the Hill (FOTCOTH)

[www.edlesboroughchurch.org.uk](http://www.edlesboroughchurch.org.uk)

 Friends of the Church on the Hill



I hope you have heard of The Friends of the Church on the Hill, Edlesborough. Our main public event is EdleFest but sadly this year we had to cancel because of Covid-19. Despite this setback the work of The Friends continues. We are dedicated to ensuring that the church, that has stood on the hill for more than 700 years, has a future built onto its past.

The Friends team of volunteers is made up of a mix of people and beliefs and includes the local Vicar and at least one atheist. What we have in common is a passion to ensure that the building survives and thrives. Our aim, in support to the church's owner The Churches Conservation Trust, is to ensure the building is loved and used. The CCT has hundreds of redundant churches on its books and we compete for attention and funds from the Trust. Our activities are focused on making the church a focal point for our community.

In addition to EdleFest we also encourage and facilitate other events to attract people into the church such as

- Heritage Open Days (A national event held in September)
- Theatre performances
- Carols by Candlelight

We help make the church accessible to everyone by opening it regularly. Whilst writing this piece the church is closed due to Covid-19. We are waiting for the CCT to advise when we can re-open the doors and we expect that by the time you read this it will be open. See the church notice board for the latest information. When visiting please remember to sign the visitors book.

We also clean the church regularly and especially before events. Recently, with a grant from The Burghope Trust, we were able to create a 'tea-point' (small kitchen) using local skilled people. This will make it possible to prepare hot drinks. We are also working on plans for storage space for crockery. All this under the watchful eye of The CCT architectural conservator. There aren't any weddings, christenings or funerals in the church any longer but people have many memories of such events that took place before the church was placed in the hands of the Trust in 1975. We would love to hear about your memories and any photos you can share. It will help us with building the history of the church and can be useful to display along with other information, with your permission, on our website or Facebook page.

Please send via our email address. [info@edlesboroughchurch.org.uk](mailto:info@edlesboroughchurch.org.uk)

Nature throws up many challenges for The Friends.

- The Friends take care of the restoration of overgrown areas made worse by the Covid-19 lockdown. The chief executive of The CCT, Peter Aiers, once remarked 'your beautiful church is visible from miles around but when you get to the village it can't be seen'. Under the leadership of Wyn Johns The Friends Churchyard Working Party with help from contractors have opened up the aspect at the front of the church and it is now clearly visible from the road and work progresses in other areas.

- The few bats in the church are protected. Our job is to ensure they are not disturbed by anything we do. We gladly sweep up their flaky droppings regularly. Not enough to use to make the flowers grow unfortunately!
- With the help of Edlesborough Parish Council the rabbit population is being addressed as rabbits are classified as a pest. They eat the flowers placed on graves and make walking around the church difficult as they burrow anywhere.
- Our new challenge is finding ways of working with the badgers that have made their home in the churchyard. Working under the scrutiny of Natural England and with help from the Bucks Badger Trust we are trying to create spaces for the badgers to dig setts away from established graves.

We have lots of ideas for making use of the church building but we are short of resources. We have a well-established management team chaired by Theresa McCloskey but we could use more warm bodies to help with our existing activities and help to create more opportunities

for using the church building. Even a few hours will help. If you are interested, please contact us via [info@edlesboroughchurch.org.uk](mailto:info@edlesboroughchurch.org.uk)

By the way, for a unique experience with beds provided, you can spend the night in the church. ‘Champing’ is the new ‘Glamping’, sleeping amidst hundreds of years of history in a church that began when Edward the First was the King of England (1273-1307). He was also known as Edward Longshanks and also The Hammer of the Scots’. Before that he sorted out the Welsh also! Find out more about Champing, availability and pricing at <https://www.visitchurches.org/visit/champing.html>

To find out more about Edward the First try Wikipedia!

The Friends look forward to more of you helping bringing the past to the present to preserve the church and churchyard for the future!

SeeusonFacebook. <https://www.facebook.com/Friends-of-the-Church-on-the-Hill-Edlesborough-524635044246266/>

✍️ Alan Williams, for The Friends of the Church on the Hill, Edlesborough



## Eaton Bray Cricket Club

And we're off. After months of doubt the Government and ECB have deemed village cricket to be

safe to play come July 11th. Unfortunately both the FCCL and Beds League have cancelled all competitive league cricket for the season but to be fair to them, they left it late and got zero help from the powers that be.

During lock down volunteers have been working hard on both the ground and facilities, that has enabled us to be in a

position to play straight away, and the club would like to thank them for their hard graft and dedication as without them we would have no cricket club.

Fixtures will be posted on a week to week basis on our social media sites and you can follow us on Facebook and Twitter @EatonBrayCC for more information on the cricket, and also the new measures put into place re Covid (on which the Committee have been very pro-active).

Pop down for a look and enjoy your cricket with Eaton Bray in 2020.



# Edlesborough Parish Council News

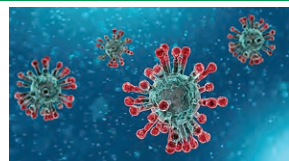
## Including Edlesborough, Dagnall and Northall

### Corona Virus (Covid-19) & the Parish

At the time of writing this report the Government has relaxed some of the Coronavirus (Covid-19) guidance.

The Council wishes to remind parishioners that the:

- Eaton Bray Good Neighbours Scheme 07930 987064
- St Marys Church Pastoral Team 07807 924218 or admin@stmaryseatonbray.org.uk
- Dagnall Covid-19 Mutual Aid Group 07762 151364



Are all still available for any parishioner who may need assistance.

The Council will continue to use its website and Facebook page to share important information about the pandemic and precautions parishioners should be taking.

**Please note:** *Information in this report may have changed since the submission. Please check our website for the latest information.*

### Edlesborough Green and Northall Play Areas



At the time of writing this report EPC and the NVH Committee have agreed to keep their respective play areas closed. It is acknowledged that this decision will be disappointing for the younger members of the Parish.

Both EPC and NVH Committee believe that

they are currently not able to meet the Government Guidelines regarding reopening of children's play areas given the stringent conditions regarding supervision and sanitisation. Once EPC and the NVH Committee are confident that the play areas can be reopened safely they will do so.

### Edlesborough Green

Edlesborough Green is now being widely used by parishioners for dog walks, exercise, socially distanced gatherings and carefully coordinated sports activities.

EPC reminds all parishioners to:

- Keep **dogs on leads** to ensure there are no breaches in social distancing.
- Maintain a social distance of at least 1+meters.
- Use the litter bins provided or preferably take all rubbish and recycling home.

### Litter in the Villages



EPC is responsible for emptying the litter bins on Edlesborough Green. The litter bins on the High Street and The Green (road) in Edlesborough are emptied by Buckinghamshire Council. If these are full please take your rubbish home and report the full bin to <https://www.fixmystreet.buckscc.gov.uk/>

EPC thanks all the Parishioners who have either independently carried out litter picking or joined the volunteer litter picking groups in the Parish.



## New Pavilion – all phases funded to completion!



*View from the balcony*

Work continues to progress on the New Pavilion and it is anticipated that the building will be weathertight by mid-August.

EPC continues to work very closely with the Edlesborough Community Sports Club (ECSC) charity who will manage this wonderful new facility. Full details of those eligible for membership will be published shortly by ECSC but certainly all Edlesborough parishioners will have free membership.

### **Ordinary Council Meetings**

EPC held their June Ordinary Council via the Social Media Platform, Zoom, once again this worked very successfully. The Council will continue to hold future Council meetings via Zoom until it is deemed safe to resume holding physical public meetings.

Any parishioner wishing to attend the



*Upstairs taking shape*

September Council meeting should visit EPC's website for more information

### **New Councillors**

At the June EPC meeting the Council was very pleased to co-opt a new Cllr onto Edlesborough Parish Council:

Richard Harpley to represent the Ward of Northall. The Council is now complete with nine councillors.

### **Mr Peter Bennett**

Mr Peter Bennett an Edlesborough resident and active member of the Burghope Trust and Friends of the Church sadly passed away in June. Mr Bennett had done much for the local community throughout his life, including being an Edlesborough Parish Councillor for two terms. His dedication to voluntary service was an example to follow.

### **Obstructing Pavements**

EPC continues to receive complaints about parishioner's hedges and planting overhanging and blocking pavements.

EPC reminds all parishioners whose hedges border the pavements to ensure that their hedges are kept well-trimmed ensuring that the maximum pavement width is available for pedestrians, pushchair and wheelchair users.



EPC would also like to take this opportunity to remind everyone that parking on pavements causes an obstruction for pedestrians, pushchair and wheelchair users and drivers should avoid doing this.

### **Allotments**

EPC currently has one plot available at the Dagnall site. Anyone wishing to take on an allotment should contact the Clerk. Fees are £2 per pole and plots range in size from 5 – 10 poles.

### **Streetlights**

Please report failed streetlights in Edlesborough, Dagnall and Northall to the Clerk for repair.

When making a report please ensure you provide the Clerk with the information displayed on the lamp post.

### **EPC Meetings**

The next Edlesborough Parish Council Meetings will take place as follows:

- Thursday 17th September 2020
- Thursday 15th October 2020

The meetings will commence at 7:30pm.

Please check the Council website for any changes in any of our current 'virtual' meeting plans via Zoom.

All Parishioners are welcome to attend all Ordinary Parish Council meetings and may ask questions, raise issues and give suggestions during the Open Forum before the formal start of the meeting.

The full minutes of the Parish Council meetings are available to view on the website or from the Parish Clerk.

### **Edlesborough Parish Council Contact Information:**

Clerk: Miss Penny Pataky *Office hours Mon – Fri 9am – 12pm (Excl. Wed)*

Email: [clerk@edlesborough-pc.gov.uk](mailto:clerk@edlesborough-pc.gov.uk) 01525 229358 Website: [www.edlesborough-pc.gov.uk](http://www.edlesborough-pc.gov.uk)

Facebook: [www.facebook.com/EDANParishCouncil](http://www.facebook.com/EDANParishCouncil)



# Cricket is Back!



The Government has moved, and the village has responded. Edlesborough Cricket Club returned to action from July 18th.

We are one pavilion short of a full facility at the moment, but what an adornment it will be when it is done! We will be setting up a series of friendly fixtures with other local sides for the next few weeks to mid-September. As always, new members are very welcome.

## **Fancy a game?**

Ring Ceri Davies on **01525 221472**, and we will fit you in. No kit? We'll find some, and sanitise it!

# Life.\*

\*Available for a limited time only. Limit one (1) per person. Subject to change without notice. Provided "as is" and without any warranties. Nontransferable and is the sole responsibility of the recipient. May incur damages arising from use or misuse. Additional parts sold separately. Your mileage may vary. Subject to all applicable fees and taxes. Terms and conditions apply. Other restrictions apply.

# Vampire Diaries

## ZSL Whipsnade Zookeepers Hand Rearing 'Vampire' Deer

Zookeepers at ZSL Whipsnade Zoo are hand rearing a unique species of deer known as the 'vampire' deer - due to their set of sharp canine teeth. Chinese water deer are born weighing less than 1kg, less than a bag of flour, so keepers at the UK's largest Zoo are taking steps to protect the tiny fawns from prey by caring for them around the clock.

Zookeeper Gracie Gee said, "The Chinese water deer fawns are a very welcome new arrival to Whipsnade and an important species for us to care for as the population in the wild is Vulnerable and continuing to decline.

"They are so small when they are born making them extremely vulnerable to predators, large birds could easily scoop them up, so we are hand-rearing the fawns in a sheltered space until they are big enough to move to their new enclosure at Whipsnade – all of this ensures we have a strong population at Whipsnade to safeguard the future of this species." Just 12cm tall at birth, the seven fawns, named Bao, Yang, Yin Mei, Chen, Lu and Zhi, are being bottle fed by zookeepers every six hours. Unlike some other deer species, the young males will not grow antlers but begin to develop a unique set of sharp canine teeth when they are about six months old – known as fangs or tusks.

Gracie Gee continued; "We're excited to see them develop – they'll only grow up to 50cm tall weighing around 11 to 18 kg when they are adults – so while they'll remain quite little, they've still got some growing to do.

"This species of deer is certainly unique, they have soft round ears which gives them a teddy bear-like appearance and the males have sharp 'fangs' or tusks which can grow up to five cm long – the males can even move these fangs forward and backwards which they use to defend their territory – while their back legs are incredibly strong, and longer than their front legs, to give them a powerful leap.

"As a free-roaming species at Whipsnade, the deer can be seen all over the zoo. Visitors are most likely to spot them in the Passage through Asia drive-through exhibit or sharing the Southern white rhinos' paddock."

The pictures show behind the scene pictures of the small Chinese water deer fawns just two weeks' old being hand fed, weighed and cared for by zookeepers.



ZSL Whipsnade Zoo reopened to the public on Monday 15 June after an unprecedented three months of closure due to the coronavirus lockdown. The loss of income put the charity zoo under huge financial pressure as they continued to provide the highest level of care for their animals. Now open to limited numbers only, ZSL, the international conservation charity behind the Zoo, is calling on the public to help ensure they stay open by booking a ticket, joining as a member or donating to ZSL at [www.zsl.org/justgiving](http://www.zsl.org/justgiving)

# *EDLESBOROUGH SURGERY*

**11 Cow Lane Edlesborough**

**Enquiries - 01525 221630 Appointments - 01525 220333**

**[www.edlesboroughsurgery.co.uk](http://www.edlesboroughsurgery.co.uk)**

**Dr Heather White, Dr Lee Mitchell,  
Dr Stephanie Johnston, Dr Kirsten Riemer & Dr Shiv Koria**

**Friendly village Practice offering a wide range of health services including  
coils/implants, minor surgery, travel advice, in-house blood tests at  
surgery, on-line appointments and repeat prescription ordering.**

**Nurse Practitioners offering acute clinics with same day appointments.  
Also Midwife. Local District Nurse service. Long established training  
Practice with a rotation of qualified doctors.**

## **EDLESBOROUGH PHARMACY**

**01525 223181**

**Pharmacist - Mitul Patel**



**Friendly reliable professional service at the pharmacy  
and well-established delivery service to the villages.**

**Professional advice always available.**

**All doctors/dentists/veterinary/hospital prescriptions dispensed.  
Herbal/Homeopathic products available. In addition we supply Disability  
aids, e.g. Wheelchairs, Incontinence aids, Ostomy/Colostomy products,  
Malaria Prophylaxis, Private Flu Vaccinations**

**We are happy to order any products you may require.**

**Instant PASSPORT/ID Photos available**

**\*\*\* New for Everyone with Dunstable Doctors \*\*\***

**Patients of Kirby Road, West Street, Kingsbury Court, Priory  
Gardens, Eastgate Surgery**

**Sign up now to have your prescriptions sent electronically to  
Edlesborough Pharmacy. Collect your medication from us, no car park  
charges and a well stocked pharmacy.**

**We have a free weekly delivery service for the housebound, elderly and  
for those unable to collect from the pharmacy.**

**email [mitul.patel5@nhs.net](mailto:mitul.patel5@nhs.net)/Tel 01525 223181 for sign-up forms**

# ASPECT

YOUR LOCAL ELECTRICIAN  
TOTTERNHOE  
OVER 20 YEARS EXPERIENCE

# ELECTRICAL

CONSUMER UNIT UPGRADES (FUSE BOARDS)  
LIGHTING - INTERIOR, EXTERIOR & SECURITY  
REWIRING  
NEW INSTALLATIONS  
TESTING & INSPECTION

ALL WORKS TO CURRENT WIRING & BUILDING REGULATIONS  
PART P CERTIFICATED & FULLY INSURED



CALL STEVE ON  
07976 283969 / 01582 665068  
aspect@sparky.me



## CHIROPODY HOME VISITING PRACTICE

Julia Reading, BSc(Hons)

17 years experience

- \* Corns \* Hard skin \* Verrucae
- \* Thickened/Ingrowing nails
- \* Nail cutting \* Diabetic feet

Please telephone: 0774 647 2781

for more information or to make  
an appointment



The COLLEGE  
of PODIATRY



Anne Johnson Osteopath  
6 Moor End, Eaton Bray

Back, neck and joint pain

Postural tension and headaches

Arthritic and other muscle and joint problems

01525 221958 / 07957 250682

Book by phone or online

[www.anne-johnson.net](http://www.anne-johnson.net)

## R.J.O'CONNELL BUILDING SERVICES

EXTENSIONS, PATIOS,  
DRIVEWAYS, ROOF REPAIRS  
AND PROFESSIONAL  
DECORATING SERVICE

TEL: 01296 681323

MOB: 07855 236726



## JAMES FALCON-CROSS LANDSCAPING AND OUTDOOR LIVING DESIGN

ALL ASPECTS OF LANDSCAPING  
UNDERTAKEN INCLUDING  
FENCING, TURFING AND PATIOS  
TIMBER STRUCTURES  
DESIGNED AND BUILT

VEGETABLE AND HERB GARDENS

01442 843258 / 07769 901325

ONECROSSFALCON@GMAIL.COM



Giblin

*The Village*  
**Property Experts**

If you are thinking of moving, or are curious about  
the value of your property, then call  
The Village Property Experts.



Giblin Property • 4a Wallace Drive • Eaton Bray • Bedfordshire • LU6 2DF

**01525 220605**

[info@giblinproperty.co.uk](mailto:info@giblinproperty.co.uk) • [www.giblinproperty.co.uk](http://www.giblinproperty.co.uk) • [lettings@giblinproperty.co.uk](mailto:lettings@giblinproperty.co.uk)



# N.D.S.

Neil Scott  
General Building & Plumbing  
(30 years experience)

- Extensions • Patios • Fencing
- Property Maintenance • Roofing
- UPVC guttering, soffits & fascia boards
- Kitchens & Bathrooms fitted

Can also

Replace steamed up/misty double glazing

Tel: 01525 221470  
Mobile: 07946 626564

FREE ESTIMATES

...

ALL WORK CONSIDERED

*NO JOB TOO SMALL*

For a top quality  
decorating job call

Marc Flack

01442 842639 (Dagnall)

Trading locally for over 15 years  
References are available.

## Misty Double Glazing?

Over 30  
Years  
experience.  
FREE  
Quotes

Over 30  
Years  
experience.  
FREE  
Quotes

**KEEP YOUR WINDOW FRAMES...  
... WE JUST REPLACE THE GLASS!**

- UPVC • Aluminium • Or Wood

Because we replace just the glass the repair is a  
Fraction of the cost of a complete replacement window.

BEFORE



AFTER



[mistydoubleglazing.co.uk](http://mistydoubleglazing.co.uk)  
**QUALITY GLAZING SERVICES**

**01525 876808**

**WE ALSO REPLACE BROKEN...**

- Glass • Handles • Hinges & Locks
- AND REPAIR...Patio Doors & Conservatories!**



**Café  
masala**

*Exquisite Indian Cuisine*

We Cater for Office or Private Parties and don't  
forget to try our Sunday Buffet

10% Discount on all Takeaway Orders Over £12

Fully Licensed & Air Conditioned

Open Seven Days a Week

Hours: 12 Noon to 2.30pm & 6.00pm to 11.30pm

**Tel: 01525 22 22 64**

63 Bower Lane · Eaton Bray · Dunstable · Beds · LU6 1RB  
email: [taraque@hotmail.co.uk](mailto:taraque@hotmail.co.uk) · [www.cafemasala.com](http://www.cafemasala.com)



## M J Security Systems Limited

[www.mjsecurity.co.uk](http://www.mjsecurity.co.uk)

01582 665022

Intruder Alarms CCTV Door Entry/Access

- Est. for 35 years and NSI Gold Accredited Installer since 1987
- Bespoke systems for commercial and domestic properties
- Free site surveys and quotations
- Takeover/removal/upgrade of existing equipment
- 24 hour/365 day engineer access
- Non contract engineer call out



## Absolutely Plastered

**DOMESTIC/COMMERCIAL,  
CLEAN AND RELIABLE SERVICE,  
FREE ESTIMATES, FRIENDLY ADVICE**



- \* Plastering & Coving
- \* Floor Screeding
- \* Pebbledashing & Rendering
- \* Dry Lining
- \* Cornices & Mouldings
- \* Insurance Work Undertaken

**CALL NICK CONWAY ON**

**Mobile: 07751 830716**

**Tel: 01296 688981**

6 Cotes Way, Wing, LU7 0RB

## ARC Contract Services Ltd

- Painting & Decorating ● Plastering
  - Wall & Floor Tiling ● Door Hanging
  - Bathroom & Kitchen Installations
- 20 years experience

All work guaranteed and fully insured

Call Adrian : 01582 539179

Mobile : 07789730580

## CHARLES HILL

GARDEN SERVICES LTD  
DESIGN | BUILD | MAINTAIN

**LANDSCAPE CONTRACTORS**  
NCH Horticulture City & Guilds Garden Design

A professional company working with all your garden requirements from design to complete landscape.

**07773 723236**

[www.charleshillgardenservices.co.uk](http://www.charleshillgardenservices.co.uk)

[www.alleyearroundbbq.co.uk](http://www.alleyearroundbbq.co.uk)

# Gas Boiler Servicing

Over 40 years experience

Have your boiler serviced by a **Gas Safe**  
and **CORGI** registered engineer

Other services available:

Maintenance, repair and installation of all domestic gas appliances including LPG. Boiler installations, Landlord Safety Certificates and Power flushing.

Free Quotes, no call out fee, and free friendly advice on all of the above.

## Edwards Gas & Heating Services

Eaton Bray

Tel 01525 220626

[www.edwardsgasandheating.co.uk](http://www.edwardsgasandheating.co.uk)

[stevethegas123@gmail.com](mailto:stevethegas123@gmail.com)



# ILLUSTRIA

## Kennels & Kathotel

Offering your pet a fully licensed Dog  
and Cat boarding service.

Purpose built Dog kennels

Individual Cat chalets with outdoor  
exercise runs

All in pleasant country surroundings

**01582 ~ 665343**



ILLUSTRIA  
Springfield Road  
Wellhead  
NR Dunstable Beds  
LU6 2JT



Proprietors

*Mick, Denise and Michele Garrod*



## Live a healthy & active life

Free 10 minute advice chats with  
our Chartered Physiotherapists  
& HCPC Registered Podiatrists

PHYSIOTHERAPY  
PODIATRY &  
CHIROPODY  
PILATES  
ACUPUNCTURE  
SPORTS INJURIES  
MASSAGE  
WOMEN'S HEALTH  
& PREGNANCY  
CARE

**St. Judes**  
physiotherapy, health and well being

01525  
**377751**   
[enquiries@stjudesclinic.com](mailto:enquiries@stjudesclinic.com)  
[www.stjudesclinic.com](http://www.stjudesclinic.com)



# TIME TO MOVE?

**Don't be alarmed,  
we're here to help!**

*Established in 1999*

e: [info@plummproperty.co.uk](mailto:info@plummproperty.co.uk)

## Five Good Reasons to use **Plumm Property**

**P**rivate Offices - direct savings to you on fees

**L**ocal Knowledge - from our highly experienced team

**U**nrestrictive contracts - no lengthy tie-in periods

**M**arketing to outside area - attracting London buyers

**M**anaging all your needs with a 1st class professional service

**From Offer through to Completion of Sale**



01296 660230

[www.plummproperty.co.uk](http://www.plummproperty.co.uk)





## Stephen D. Janes

(Established in 1982)

**CARPENTRY, JOINERY  
KITCHENS FITTED  
PROPERTY MAINTENANCE  
TELEPHONE: 01525 220649**

## G & J Groundwork & Landscapes

Block Paving \* Patios \* Driveways  
Clearance \* Paths \* Shingle \* Slabs  
Artificial Grass \* Fencing  
Free estimates

**Garry**

**01582 477568 07949 118011**

## Neil Hodson Associates

*BUILDING DESIGN  
STRUCTURAL ENGINEERING*

**PROFESSIONAL BUILDING DESIGN,  
ADVISORY AND DRAWING SERVICES**

From plans for domestic extensions to multi-storey offices, commercial buildings and factories.

Structural surveys, site surveying, advice on building defects and Feasibility Studies

Planning Applications and Building Regulation Consents obtained.

**24 HIGH ST TRING  
Tel 01442 890894 OR  
Edlesborough 222462**



Moren Associates  
Publishing Services

## Desktop Publishing

**Presentations**

**Books, Leaflets Brochures  
Magazines, Adverts  
Design & Layout  
Self Publishing**

**Digitising**

**Scanning of Photos &  
Documents, Slides & Videos  
Archiving, Photo Repairs**

**Domain Name, Email  
Address &  
Web Site Hosting**

**01525 229695**

**enquiries@morenassociates.co.uk**

**www.morenassociates.co.uk**

## D Scott and Sons

Home Services Limited



**Plumbing, Heating  
& Drains Specialists**

- Boiler repair**
- Boiler installations**
- Powerflushing**
- Annual servicing**
- Landlords certificate**
- Magnetic system filters**
- Radiator valves**
- Oil central heating**

**Other services...**

We offer a full range of plumbing services including full bathroom refits, showers, sinks, taps, traps & drainage and kitchen appliance installations.

**Drainage - including repairs, camera surveys & drain jetting.**

**www.dscottandsons.net**



**contact us now on  
01525 791563  
07921 670437**





## EDLESBOROUGH TENNIS CLUB

Come and play tennis with us at our friendly club on The Green

- High quality floodlight courts with easy booking system
- Coaching available for adults and children from our LTA coach
- Weekly club nights, with balls and floodlights provided

Contact us at: [enquiries@etctennis.org](mailto:enquiries@etctennis.org) or visit us at: [www.etctennis.org](http://www.etctennis.org)

## Appledown Rescue and Rehoming Kennels



We have been very busy since reopening after lockdown and we are delighted that many dogs who had been in kennels for longer than we would have hoped have now found loving homes. But for Marble, Levi, Yasmine and others the wait continues. If you are interested in offering a dog a secure and happy home please download an application form from our website. There is lots of information about the adoption process on the website too.

Albums of photos and information on some of the available dogs can be found on our Facebook page, but please bear in mind that not all the dogs have albums and we have frequent new arrivals, so it is worth sending in a form. Our experienced staff make every effort to match the right dog with the right owner. Viewings are now by appointment only.

For adoption information and application form visit our website [www.appledownrescue.co.uk](http://www.appledownrescue.co.uk)

**Appledown Rescue & Rehoming Kennels, Harling Road, Eaton Bray, Beds LU6 1QY**

01525 220383 (10-12 a.m. & 2-4 p.m.) e-mail: [appledown.kennels@btinternet.com](mailto:appledown.kennels@btinternet.com)

**Follow us on Facebook & Twitter!**

**THE ASHRIDGE ESTATES SALE 1924**  
Continuing our articles on the historic sales of local property

3

**.. Particulars ..**

---

**In the Parish of Edlesborough.**

**LOT 1**

(Coloured Red on Plan No. 1).

**A Block of 7 Brick and Slated Four-Roomed Cottages**

with Detached Wood Barns and E.C.'s, and Long Front Gardens, being **No. Pt. 284** on the Ordnance Survey and Nos. 8 to 14 (inclusive) in the Village of Edlesborough.

Let to various Tenants at Rents producing **£33 1s. 6d.** per annum.

<b>Outgoings.</b> —Land Tax	...	...	...	...	£	s.	d.
					1	0	0

**LOT 2**

(Coloured Green on Plan No. 1).

**A Desirable Brick & Tiled Detached Dwelling House**

being **No. Pt. 222** on the Ordnance Survey (and No. 1 Edlesborough), containing Seven Rooms, with Timber and Corrugated Wash House and E.C. adjoining, small Lawn and Kitchen Garden.

Let to the Bucks County Education Committee on a Yearly Tenancy subject to Six Months' Notice expiring at Michaelmas in any year.

**LOT 3**

(Coloured Pink on Plan No. 1).

**Part of an Enclosure of Productive Arable Land**

situate in the Hamlet of Northall, being **No. Pt. 352** on Ordnance Survey, and containing

**32.613 Acres**

(more or less),

with a long Frontage to the Main Road, and Let to various Tenants, on Yearly Michaelmas Tenancies, at Rents apportioned at **£48 8s. 0d.**

<b>Outgoings.</b> —Land Tax	...	...	...	...	£	s.	d.
Tithe, Vicarial	...	...	...	...	2	6	6



Run

Cycle

Walk

Or all 3

Join us today to make a big impact

It's VIRTUAL, it's YOUR challenge and it's for ALL ages and abilities!

Take part in our VirtYOUall fundraising events that are all about YOU!. You choose what, how far, when and who with!

All we ask is that you TRY to push yourself and raise vital funds for children with cerebral palsy.

Sign up today: [thepacecentre.org/trychallenge](https://thepacecentre.org/trychallenge)

Charity No. 1011133





# St. Mary's Scarecrow Competition

It was so disappointing that we couldn't have the Carnival this year which is always such an exciting and busy time for our four villages but we were able to bring some fun to the community on Carnival weekend through our first ever Scarecrow Competition. The theme was HEROES, the same as planned for the Carnival. It was such a good theme as during this difficult time, we have certainly seen lots of heroes in our local community and beyond. All people had to do was construct a scarecrow (or more than one) in their front garden or other prominent place where it could be seen from the road. This was such a great opportunity to involve the whole family in a fun community activity and the villagers rose to the occasion with so many great ideas honouring our doctors, nurses, other NHS staff, armed forces, firemen, farmers, refuse collectors, posties, local traders and Good Neighbours scheme members, together with a plethora of Captain Toms, and a good sprinkling of Superheroes!

The winners were:

1st: 9 High Street, Eaton Bray

2nd: 7 St Mary's Glebe, Edlesborough

3rd: 2 Bower Close, Eaton Bray

Well done everyone for joining in and thank you to all who contributed online or otherwise to Dunstable Foodbank and St Mary's Church. When Gift Aid has been added in we will have collected over £1000.



*1st place:  
9 High Street,  
Eaton Bray  
Local heroes  
(left) and  
Donald  
Trump with  
bleach and  
disinfectant to  
drink (above)*



*Left: 2nd place:  
7 St. Mary's Glebe,  
Edlesborough*

*Right:  
17 Northcliffe, Eaton Bray*



*Left: 3rd place:  
2 Bower Close, Eaton Bray*





*Left:  
18 The Orchards, Eaton Bray*



*Right:  
Flicks & Bangs, High Street, Eaton Bray*



*Left:  
Dagnall Village  
Hall*





*Left:  
29 Brownlow Avenue,  
Edlesborough*



*Right:  
The Vicarage, 11 High Street,  
Eaton Bray*



*Left:  
2 Orchard End,  
Edlesborough*



We hope to be able to enjoy

# WORLDS BIGGEST COFFEE MORNING

We have no details yet but please look out for our posters and notices and try to join us on Friday 25<sup>th</sup> September!



WORLD'S BIGGEST  
**COFFEE**  
MORNING

**MACMILLAN**  
CANCER SUPPORT

# **ST MARY'S, EATON BRAY**

## **OPEN GARDENS**

### **Sunday 23rd August**

#### **11am - 5pm**



What to do during lockdown? Well, it seems that a good number of households have spent plenty of time in their garden especially during those lovely sunny days in April. In our own garden, we have redesigned the front garden, cleared weeds from areas that haven't seen the activity of a hoe for a good number of years, and strengthened and repaired our fruit cage.

August 23rd offers the chance to visit gardens in our villages and I hope lots of people will get out and enjoy people's hard work in what should be one of the social events of the year. In the circumstances of the pandemic any planning we do will be subject to government advice and restriction but to help facilitate the event this year and enable visitors to maintain social distancing we have selected large gardens. Programmes giving access to all the gardens are available from a gazebo that will be erected in the churchyard near the Eaton Bray Village Hall.

At this stage of planning we would welcome one or more offers of gardens. I can assure you that people's response to people who open their garden is incredibly positive. If you can help please contact me on 220136. Thank you, Gordon Gray



# Friends of the Church on the Hill (FOTCOTH)



[www.edlesboroughchurch.org.uk](http://www.edlesboroughchurch.org.uk)

 **Friends of the Church on the Hill**

I hope you have heard of The Friends of the Church on the Hill, Edlesborough. Our main public event is EdleFest but sadly this year we had to cancel because of Covid-19. Despite this setback the work of The Friends continues. We are volunteers dedicated to ensuring that the church, that has stood on the hill for more than 700 years, has a future built onto its past.

The Friends team under the leadership of Chair, Theresa McCloskey, is made up of a mix of people and beliefs who volunteer their time and includes our local Vicar and at least one atheist.

About the only activity we have been able to do since Covid struck is to work to open up the churchyard by clearing brambles and scrub to reveal graves that have been lost to nature. We are entering details gradually into [www.findagrave.com](http://www.findagrave.com). People from all over the world are able to access information about their relatives. Locally, people are able to visit family graves that were inaccessible and pay their respects to loved ones long since passed. Keeping these graves clear is an ongoing challenge as saplings have taken root in some places and weeds are a lot stronger than flowers! The Covid lockdown allowed nature to gain the upper hand in some places.

We think it is important that the past is kept present, out of respect for the dead.

Before

After



Edlesborough Parish Council, on your behalf, funds the regular grass cutting around the graves in the churchyard as well as the parish cemetery. The Friends Churchyard Working Party, under the leadership of Wyn Johns, takes care of the restoration of overgrown areas.

We have lots of ideas too for making use of the church building but we are short of resources. We have a well-established management team but we could use more warm bodies to help with our existing activities and help to create more opportunities for using the building. Even a few hours will help. If you are interested please let us know via [info@edlesboroughchurch.org.uk](mailto:info@edlesboroughchurch.org.uk)

Our next major project for the building is getting the ancient stained-glass window repaired and restored to the tower since it was damaged when storm Doris hit in 2017. The Friends look forward to more of you helping bringing the past to the present to preserve the church and churchyard for the future!

See us on Facebook. <https://www.facebook.com/Friends-of-the-Church-on-the-Hill-Edlesborough-524635044246266/>

✍ Alan Williams, for The Friends of the Church on the Hill, Edlesborough

## Eaton Bray Methodist Church

Although we still cannot meet and greet face to face, we find our online Zoom community very cheering, having got to know so many new friends from round the circuit and sharing in services with interesting and inspiring sermons. On Trinity Sunday our service was led by Colin Quine, a familiar and welcome face to the Eaton Bray congregation. He helped us to understand the mystery of the Trinity; God, the nurturing parent, Jesus our friend, and the Spirit who prompts and comforts us and leads us in the Dance of Life. On the second Sunday in June, Refugee Week, Ivor Mitchelmore spoke movingly of hope in spite of suffering, quoting poetry written by Christians experiencing the isolation of permanent lockdown in a Japanese leper colony. The third Sunday, Father's Day, brought us a new preacher, Ian Horsler, sharing with us the idea of God / Abba, the father of all who loves us to the uttermost and never forsakes us. Our final Sunday service in June was conducted by Geoff Best with a typically challenging and thoughtful sermon. He made us face up to reality and the problems confronting us as a nation and a church. Reflecting on the times and warnings of Jeremiah, he reassured us that there was real hope, providing we recognised the truth of our situation, abandoning complacency and actively embracing change.



### SMILE WITH BLUE CROSS

Blue Cross has linked up with Amazon Smile and now when you shop online using Amazon Smile, you can nominate Blue Cross to receive a donation of 0.5% of your spend. Simply click this footer and choose Blue Cross to be your charity to receive donations.



amazon smile

CLICK HERE



# Photography in Focus

In this series, John Hockey shares some tips

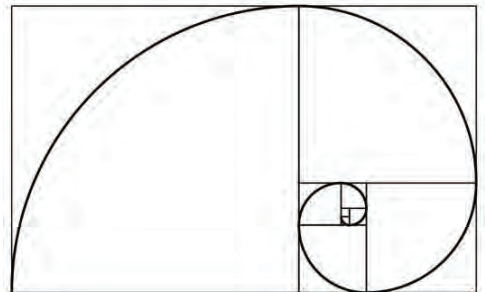
## SHAPE & COMPOSITION

Two rules come up time and time again in photography, one is the ‘rule of thirds’ which apparently is where you place the point of interest in your photograph. According to the rule, it should always be at the intersection of a line a third down and a third in from one edge. This is of course nonsense as many great pictures ignore this rule, but this example shows what they mean. [The Chiltern Way, near Lilley]:



Note how the horizon intersects with the marker post, a third down and a third in from the edge of the picture. On this occasion the footpath also makes an entrance diagonally and it too meets at the same point, so maybe on this occasion it works – so be aware of this ‘rule’ but don’t be a slave to it!

The second rule concerns what is called ‘The Golden Mean’. This is all about proportion and how certain shapes just ‘seem’ right. There is a mathematical formula for this but rather than go into it, let me just say it is what makes Georgian houses look naturally attractive. A particular development of this formula allows a spiral to be made, as shown here. This shape occurs naturally in nature, in certain shells for example.



*The Golden Spiral*

Once, on a trip to Greenwich, we went to the Queen's House, designed in a classical style by Inigo Jones. Looking up at the Tulip staircase which was one of the first cantilevered designs to be realised, I thought the shape particularly pleasing – it just seemed right, I don't know if you agree.



Sometimes you will find a spiral by accident. In Wrest Park, the stairs have a lovely wooden banister that terminates in a pleasing arc. To show the wood to best effect I climbed a couple of stairs and photographed it from above:



Here you have an intersection of thirds (at the centre of the lower support), a double spiral and for extra visual pleasure the complimentary colours of the golden cast iron and the blue carpet. (We will deal with colour in a later section).

Sometimes all the hard work has been done for you and all you have to do is find the viewpoint for pleasing proportion and composition. This picture, taken at another stately home, has a further beneficial layer on top of proportion and colour, that of repetition. Here the amount of space taken up by steps, wall and sky is roughly equal. In addition, the colour red, which always draws the eye, takes a natural journey up the steps in a staccato rhythm of repeating pelargoniums. In addition, there is a repeat of the handrail in its shadow as the picture was taken in full sun:



Next time: Viewpoint



# Summer King Prawn, Squid and Chilli Spaghetti

Of course this pasta can be eaten all year round, but for me it screams summer. Holidays spent on the coasts of southern Europe, enjoying exactly this kind of sunshine dish, usually accompanied by a crisp glass of white wine. Extremely quick to put together and so colourful on the plate, this is one of my absolute favourites.

Serves 4

450g spaghetti

1 small onion, finely chopped

3 cloves garlic, peeled and finely chopped

2 red chillis, finely sliced

1 bag frozen raw king prawns, shelled

4 fresh squid (or frozen), sliced into rings

1 glass white wine

10-12 small cherry tomatoes, quartered

Large handful parsley, finely chopped

Olive oil, salt and pepper

Cook the pasta in a large bowl of well salted water as per the packet instructions.

Meanwhile, heat a glug of oil in a large pan and gently fry off the onions for 3-4 minutes.

Chuck in the garlic and chilli and cook for a further couple of minutes.

Stir through the prawns and the squid and cook for a minute. The prawns will start to turn pink.

Add in the wine and the tomatoes and let the sauce simmer fairly vigorously for a couple of minutes to reduce the wine.

Add in the chopped parsley and season to taste.

Drain the pasta and stir it well into the sauce.



Leave it sit for a couple of minutes so that the pasta takes on all the flavours of the sauce.

Serve immediately (with parmesan if, like me, you don't mind going against tradition and always eat parmesan with your pastas, even seafood ones!)



*BBC Three Counties Radio presenter and cook, Nick Coffey*



# LOCAL HERALDRY

## BY JOHN HOCKEY

In this series, we take a look around local towns and villages to find interesting and unusual heraldry.

### SIR GILES ARGENTEIN

Sir Giles Argentein was one of the most famous tournament warriors of his time. He definitely fought in the Dunstable mêlée of 1309, which we know because a contemporary written record of all the knights that took part in that tournament was made, complete with their coats of arms.

Later, Sir Giles was part of Edward II's bodyguard at the Battle of Bannockburn in 1314 when, with the English army routed and the king taken to safety, he returned to make a suicidal charge at the Scottish position and was killed.

The coat of arms shown here (Gules a semé of cross-crosslets, three covered cups Argent = A red background, strewn with silver crosses and three silver cups) has an interesting history.



These arms were devised to record an incident of feudal tenure. The wider family held the manor of Wymondley in Hertfordshire which entailed that the tenant should present a cup of wine to the King at his coronation. Sir John Argenton (=Argentein) performed this service at the coronation of Richard II on 16th July 1377 and had the silver cup for his fee. Note that the crosses and cups are both silver (Argent) and this would be an easy aide memoire to those who did not read that this was a punning or *canting* arms on the name of the holder. The original coat of arms did not have the cross crosslets on the shield and these were added as a mark of difference by Sir Giles, showing that he was from a different branch of the family to the member to whom the arms were granted. It is quite common for different branches of a family to alter coats of arms in this way.

Next time: More Dunstable Tournament warriors

Make your house a home with  
blinds and awnings from

**VANSAR  
BLINDS** 

[www.vansarblinds.co.uk](http://www.vansarblinds.co.uk)

Find us on Facebook



- Free No Obligation Measuring And Quotations
- All Blinds Made To Measure
- Choose In The Comfort Of Your Own Home Or Workplace
- Family Run Business
- Large Range Of Quality, Affordable Fabrics And Colours To Choose From

01525 220477 or 01582 699565 [sales@vansarblinds.co.uk](mailto:sales@vansarblinds.co.uk)

## JoAnn Latus School of Dance



- Ballet, Tap and Modern classes for children aged 3 and upwards
- Adult Ballet classes starting in the New Year
- Professionally trained teachers and safeguarding policies in place
- Regular exams, shows and theatre trips

Classes held in Buckinghamshire,  
including Eaton Bray on Tuesday  
and Friday evenings

For more information contact JoAnn Latus:  
Tel: 07800 518654

Email: [info@jolatusdance.co.uk](mailto:info@jolatusdance.co.uk)

Web: [@jolatusdance](http://www.jolatusdance.co.uk)

## McTimoney CHIROPRACTIC



**Margie Craib** BSc BHSI DC AMC MMCA  
Human and Animal Treatments

Ashridge Farm, Ringshall, Berkhamsted, Herts HP4 1ND  
Telephone: (01442) 842729

General Chiropractic Council Registration No. 293

## Spinney Landscapes & Gardening Services

**All Aspects of Grounds Maintenance**  
Leaf Clearance • Grass Cutting/Scarifying  
Patios & Driveways • Pressure Washing  
Weed Control • Tree Work & Wood Chipping  
Fencing • Snow Clearing • Mini Digger Hire  
Tel: 01525 839622 Mob: 07876 500292  
Email: [spinneylandscapes@gmail.com](mailto:spinneylandscapes@gmail.com)  
[www.spinneylandscapes.com](http://www.spinneylandscapes.com)



# Curiosity Creativity Community



Dagnall C of E school is a nurturing and inclusive learning community, situated at the foot of the Chiltern Hills.

**Ofsted 'good' (June 2018):**

*"A positive learning environment where pupils are exceptionally well cared for and nurtured."*

**SIAMS (July 2018):**

*"The school is outstanding at meeting the needs of all learners."*

We offer a unique, family feel where children benefit from small class sizes and personalised learning.

We provide a creative environment where children feel safe to challenge themselves and to develop their love of learning.

**Spaces available**  
To arrange a visit please call:  
01442 842473  
or visit: [www.dagnall.bucks.sch.uk](http://www.dagnall.bucks.sch.uk)  
email: [office@dagnall.bucks.sch.uk](mailto:office@dagnall.bucks.sch.uk)





We are a nurse-led home care provider committed to delivering the very highest standards of care.

Support from our dedicated team gives you or your loved one the peace of mind and confidence to be able to continue living at home.

Family-owned and managed, we are independent and do not belong to a national chain or franchise. We are registered with the CQC, number 1-1499072841.

To talk to us about your requirements please call Helen Yates RGN on 07920887414 or 01442 843064 or email [helen.yates@yourownhomecare.co.uk](mailto:helen.yates@yourownhomecare.co.uk)



[www.yourownhomecare.co.uk](http://www.yourownhomecare.co.uk)

# NG AUTOS

**MAKING YOU AND YOUR CAR HAPPY**

**CAM BELTS • MOT'S • MOT REPAIRS • HEAD GASKETS  
AIR CONDITIONING • RECOVERY/BREAKDOWN  
DIAGNOSTICS SERVICING • BRAKES • SUSPENSION  
CLUTCHES • GEARBOXES • TYRES • WHEEL BALANCING  
WHEEL ALIGNMENT COLLECTION & DELIVERY**

**CALL NICK OR GARY**

**01525 220850 OR 07972 198615**

**SPARROW HALL FARM, LEIGHTON ROAD,  
EDLESBOROUGH LU6 2ES**



*Reception*



*Service Bays*



*MOT Station*





# DM SECURITY

Commercial & Residential Alarm Systems

CCTV • Access control • Intruder Alarms • Locks

Electrical Installations • Fuse Boards • Re-wires

John Dorman: 07483 872017 Chris Mahoney: 07801 552113

20 Slicketts Lane, Edlesborough, Dunstable, Beds, LU6 2JD

## D.A. Windows, Doors & Conservatories

Emails: [dawindows@live.co.uk](mailto:dawindows@live.co.uk)  
[mimcavinder@hotmail.com](mailto:mimcavinder@hotmail.com)

Telephone: 01582 485443

Mobile: 07807 798387

- Installation of UPVC windows, doors and conservatories
- Composite doors and side lights – choice of design and colours
- Replacement glass units and window maintenance

**\*QUALITY PRODUCTS\***

**\*QUALITY WORKMANSHIP\***

**\*QUALITY PRICES\***

Contact us for a quotation or to discuss your requirements

ACCREDITED MEMBER  
OF THE INCORPORATION  
OF PLASTIC WINDOW  
FABRICATORS AND  
INSTALLERS

GOVERNMENT APPROVED  
CERTASS REGISTERED  
CONTRACTOR REG. NO.  
001634

## Leighton Aerials

Established 1970

For all your aerial and satellite needs call Colin on

**01525 374742**



# Edlesborough School

## and Pre-School



Together we achieve the extraordinary

For more information about our School, Pre-School and  
Before and After School facilities,  
visit our website at:

[www.edlesborough.bucks.sch.uk](http://www.edlesborough.bucks.sch.uk)

**Ofsted**  
Good  
Provider





# The Gentleman Gardener

Let your local RHS qualified gardener make your garden beautiful, from simple garden maintenance to total redesign of your garden.

Please call Barry on  
**01525-222451** or  
**07541196384**

to pop round for a free chat.



**A McClelland  
Pest Control**  
FOR FAST RESPONSE CALL:  
**Mobile 0777 494 8415**  
**Office 01582 872158**



*specialists in: wasps - bees - ants  
hornets - fleas - cockroaches - bed  
bugs - pigeons - magpies - rabbits  
rats - mice - moles - squirrels  
foxes - mink - feral cats*

**UNMARKED VEHICLES**  
For further information please call or email  
[amcclellandpestcontrol33@gmail.com](mailto:amcclellandpestcontrol33@gmail.com)



**Parties    Wedding Receptions    Stage Productions**  
**Fitness Classes    Business Meetings    Beer Festivals**  
**Film Shows    Club Meetings    Keep Fit    Quiz Nights**

## Eaton Bray Village Hall

**Capacity for 220 People    Parking for 70 Cars    Meeting Room    Countryside Views**  
**Bar Facilities    Kitchen Facilities    Full AV Facilities    Baby Changing    Wheelchair Access**



For bookings or enquiries call: 07975 797 202  
email: [bookings@ebvh.co.uk](mailto:bookings@ebvh.co.uk)

[www.ebvh.co.uk](http://www.ebvh.co.uk)





# WAGGING

wonderful dog grooming

Here to take care of your mucky pup!

Your local dog grooming service in Eaton Bray

1-2-1 care for your dog

NO cages!

**07580 343396**

[www.waggingwonderful.co.uk](http://www.waggingwonderful.co.uk)

[info@waggingwonderful.co.uk](mailto:info@waggingwonderful.co.uk)

## James B Chadburn FBHI

Fine Antique clocks & Barometers

Specialist in repairs & restorations.

Valuations & clock finding service.

Advice & assistance on formation & disposal of private clock collections.

Quality clocks/barometers Bought & sold.



Telephone 01525 221165

Mobile 07790 000629

E-mail: [info@jameschadburn.com](mailto:info@jameschadburn.com)



Contact James direct on:

Mobile: 07771 698 151

Office: 01582 343 123

Email: [james@andertonelectrics.co.uk](mailto:james@andertonelectrics.co.uk)



See our feedback on Check a trade

[www.checkatrade.com/andertonelectrics](http://www.checkatrade.com/andertonelectrics)



- ✓ Free quotations, no obligations
- ✓ Emergency Work – day or night
- ✓ Domestic or Commercial
- ✓ A name you can trust



[www.andertonelectrics.co.uk](http://www.andertonelectrics.co.uk)





## All Aspects of Pressure Washing

- Roofs Cleaned and Coated
- Block Paving Refurbished
- Driveway / Patio / Pathway Cleaning
- Building Fascia / Cladding Cleaning
- Gutter Vacuuming / Fascia & Soffit Cleaning
- Graffiti / Chewing gum removal
- Conservatory Cleaning



**0800 298 5883**  
[www.greatoutdoorscleaning.co.uk](http://www.greatoutdoorscleaning.co.uk)



# TODDINGTON

INDEPENDENT FINANCIAL ADVICE



## DO YOU NEED FINANCIAL ADVICE?

**We can help you to review your current or proposed,**

**Mortgages, Insurances, Pensions & Investments, Equity Release, Inheritance Tax, Wills and Trusts, or a general review of your current position?**

'As a mortgage is secured against your home, it may be repossessed if you do not keep up the mortgage repayments. The financial conduct authority does not regulate tax and estate planning or will planning'

**Unlike some TV adverts we don't charge a fee for equity release, so no broker fees added to your loan!** 'Equity released from your home will be secured against it'

**LOCAL OFFICE: Toddington**

**Contact: Philip Hadlow**  
**Tel/Fax: 01525 874100**  
**Mobile 07768 277 532**  
**[info@toddingtonifa.co.uk](mailto:info@toddingtonifa.co.uk)**  
**[www.toddingtonifa.co.uk](http://www.toddingtonifa.co.uk)**

**Free Will with Investments & Pensions placed through us of over £50,000 and within 6 months of investment**  
**Talk to us for a free initial consultation**

Toddington Independent Financial Advice Ltd is authorised and regulated by the Financial Conduct Authority.

Registered office: 1 St John's Barns, Griffin Farm, Conger Lane, Toddington, Bedfordshire, LU5 6BT

Registration Number: 760687 Company Number: 9931606

**EDLESBOROUGH**



  
**THE ORCHARDS**  
ESTABLISHED 2004

**NEW HOME, NEW PRICE**

**£450,000**

**INCENTIVES AVAILABLE**

3 BEDROOMS  
EN-SUITE TO MASTER  
STUDY  
CARPORT

**READY FOR OCCUPATION**

**HOUSEHOLD**  
**estate agents**  
— New Homes —

Call 01582 477077  
now to arrange your appointment  
email [dunstable@house-hold.co.uk](mailto:dunstable@house-hold.co.uk)

# The Fascinating Lives of Badgers

Courtesy of the The Badger Trust [www.badgertrust.org.uk](http://www.badgertrust.org.uk)

Badgers are short, stout, powerful animals that live in underground 'setts' that can extend well over 50 metres long! Members of the mustelid family (which includes pine martens, otters, polecats, ferrets and the wolverine), the European badgers' range extends from Britain, across Europe and to the middle east.



The badger is one of the UK's most recognised and popular mammals, bringing pleasure to thousands of people and is a living symbol of the British countryside.

In the UK, badgers live in mixed-sex groups of between four and eight animals in underground 'setts'. A social group living together in the same sett is also known as a 'clan'. While badgers tend to live in groups, they do not always act cooperatively with their fellow clan members. Badgers are unique in this way as individuals in a clan will forage for food on their own, unlike other social groups of animals who might hunt together and reap the benefit as a group.

A badger's sense of smell is a particularly important sense as it plays a vital role in communication. Badgers have several scent glands which produce a variety of odours, used for distributing information like warning signals and mating status.

Scents produced are also used to tighten bonds between social groups, with studies suggesting that clan members have similar scents. Badgers also deposit scents in their faeces and will typically defecate in shallow dug pits known as latrines, which are found on territorial boundaries.

Badgers distribute their scent information through techniques known as squat marking (dipping their rear and lifting their tails) and allo-marking (marking each other).

The diet of a badger is extremely varied, with badgers being described by expert professor Tim Roper as "opportunistic omnivores". Earthworms are the core of the badger's diet, often by as much as 60 per cent. In a single night, an adult badger may eat well over 200 worms!

When conditions are harsh (hard frosts, dry or barren areas of habitat), worms can be scarce. Cleverly, badgers are able to shift to other food items, including snails, slugs and soft fruit like raspberries and fallen blackberries. Badgers will occasionally eat hedgehogs if normal prey items are not abundant

Badgers mate at almost any time of the year, but due to an unusual reproductive technique, known as delayed implantation, they have only one litter a year. Litter size ranges from one to five cubs, with two or three the more common number. Cubs are born in chambers lined with bedding material that the females (sows) gather and drag into the breeding chamber. Straw, hay, grass and fern are all commonly used, which keep the cubs warm. Most cubs are born in early to mid-February and will emerge above ground at around 12 weeks. At 16 weeks, cubs will be displaying most adult



social behaviours, including grooming and scent marking.

The earliest traces of badgers in Britain have been dated back to three quarters to half a million years ago, according to a study by Yates (1999), meaning badgers once co-existed with wolves, brown bears, arctic foxes and wolverines, all

of which once roamed Britain!

Badgers live underground in a network of tunnels and chambers called a 'sett'. Badger setts vary from occasionally used "outliers", which often have single entranced tunnels, to vast, ancient underground complexes with multiple entrances. These larger setts can extend from 20 to 100 metres or more, with some of the largest having more than 50 entrances! Such elaborate setts can take many years to create and are passed down through generations – some setts can be more than 100 years old. These are the family homes, used, maintained and enlarged at will by generations of the same social group. The badger can grow up to 1 metre in size and has loosely fitting skin, which makes it difficult for an antagonist to get a firm grip of the badger in a fight. A thick layer of subcutaneous (under the skin) fat develops during autumn in order for the badger to live off fat reserves when going into torpor during winter.

Body weight of adult badgers is variable and can depend on several factors; the differing seasons, the area in which they live, the amount of food available and their age. Badgers are at their heaviest in late autumn as they fatten up for winter. They then feed less, spend more time inactive underground, and their weight falls away. Sows (females) are at their lightest after giving birth.

The short dark and white hair on the face gives the UK badger (meles meles; European or Eurasian badger) its iconic striped features, with black ears tipped in white.

Most badgers appear grey in colour on the main body, with a lighter colour on the underbelly, although some can appear to be a shade of brown on the back and side. Badgers have black hair on their legs and chest.

Some differences in hair colouring can be staining caused by environmental surroundings and this is more noticeable in underbelly hairs. Yellow staining from the subcaudal scent gland can be seen in older adults.

Badger eyes are relatively small and are black.

There are no noticeable colouring differences between male (boar) and female (sow) badgers. Badger cubs are born with very light silvery hairs and after a few days the facial stripes appear; they then develop to have the same markings as adults.

There are other forms of pigmentation within the badger population, which can almost give the appearance of different species:

The albino badger is a light coloured animal and has mostly creamy white hair, though it's unlikely to be completely white. The eyes will probably be red or pink in colour.

The leucistic badger is a condition where there is a partial loss of pigmentation which gives the animal an appearance of patches of light colour on the hair. There is no loss of pigmentation in the eyes, so the eyes will be black. This helps distinguish the difference between an albino badger or leucistic badger.



The erythristic badger has mainly sandy or gingery colour hair on the back and sides and the hair on the underbelly can be a shade of red. The eyes will be black.

A badger which is extremely rare is the melanistic badger and sightings of this animal are uncommon. The pigmentation of a melanistic badger is mainly black. The eyes will be black.

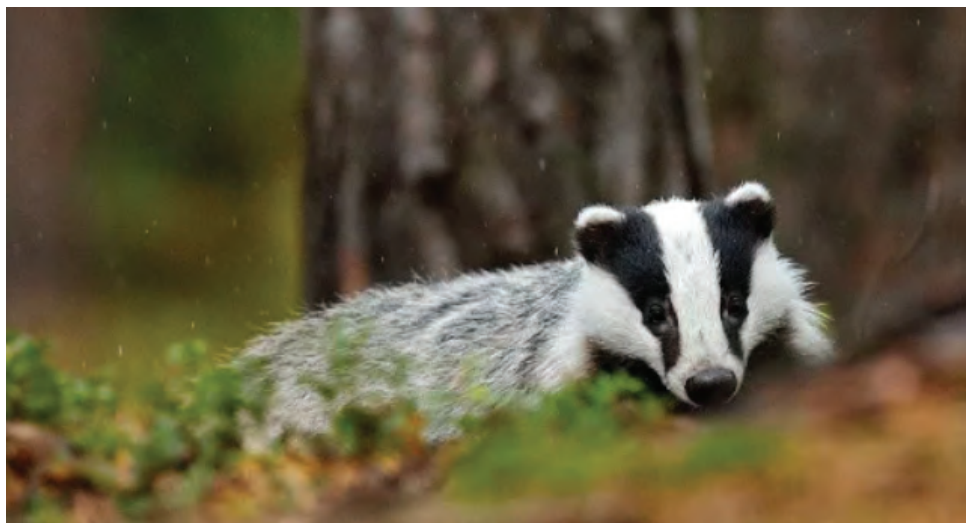
The rise of the urban badger, as humans develop on historical badger territories, brings with it some growing pains as humans and badgers learn to coexist peacefully. Badgers carry on going about their business and in doing so occasionally cause issues with their human neighbours. Many view badgers as a treat and are delighted by their presence, while others view them as night time pests.

We are experiencing more prolonged dry periods with little to no rainfall, which is to be expected as part of a change in our climate. This naturally will have an effect on our native wildlife including our badgers.

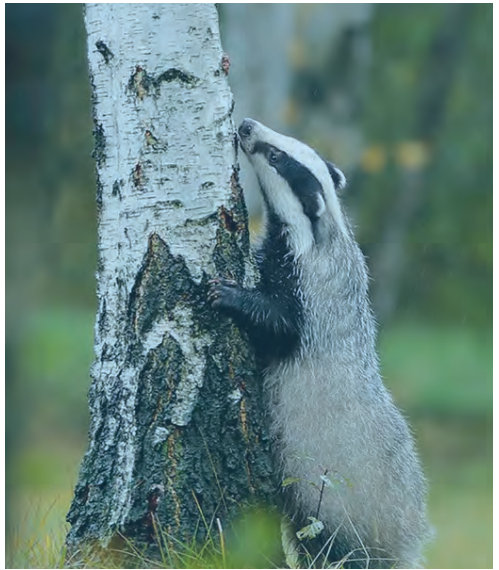
The extent of flooding caused by recent storms could be having a devastating impact on badgers. From loss or damage to badger setts, to difficulties finding food in flood-affected habitats, life will be harder for badger clans throughout the UK.

Badgers find food where they can. Often unseen and unheard, they wander quietly into gardens at night feeding on the earthworms, grubs, snails and slugs they find in lawns and borders. They usually leave small visual signs, a snuffle hole, pieces of scratched turf, as visual evidence of their nighttime visit. In dry or frosty conditions when natural food is hard to come by, they can damage flower beds and lawns in desperate search of food. Controlling the food source can be the first deterrent if you are unhappy about your nighttime visitors.

Badgers can be discouraged or prevented from entering gardens by solid, effective fencing, locked gates and the use (not always 100 per cent effective) of ultrasonic deterrent devices. Members of Brockwatch, the badger group for Northampton and South West Northants, report success with a device called Animal-Away Plus. Another group reports that a radio left on all night in a garden-at levels which didn't offend



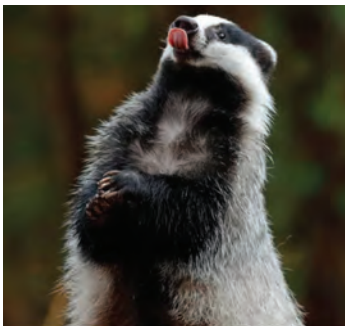
neighbours successfully discouraged badgers from entering. However, where practical, electric fences are the most effective humane deterrents. There are no legal proven chemical deterrents for badgers. Recurring attempts by badgers to enter gardens are sometimes resolved only when badger-proof mesh is trenched in to a depth of around one metre to prevent them from digging under fences. The badger trust does not recommend feeding badgers. You may enjoy attracting badgers but this could be problematic for others in your neighbourhood. If you feel like you must feed them in severe weather when natural resources are in question a small handful of peanuts will suffice. Just like with dogs and cats, human foods are not healthy.



Thousands of badgers are killed on our roads every year. The badger trust collates road traffic accidents to identify hot spots where mitigation should be placed or identify new setts. Please report fatalities to the badger trust. Occasionally the prompt investigation of RTAs reveals the presence of orphaned cubs nearby that can be rescued.

Badgers injured in fights sometimes retreat to places where they can rest and recover in peace, free from the attentions of would-be aggressors. Barns, garden sheds, corners of gardens, spaces under patios are often chosen. Left alone badgers with ugly-looking bite wounds to their necks or rear quarters will often recover very quickly and wander off. Some are less fortunate, the wounds turn septic, and they, along with badgers seriously injured in traffic accidents need skilled care—from a vet, wildlife rescue centre, the local badger group or the RSPCA. Inevitably many are too seriously injured to be saved and they have to be put down to save them further suffering; but there is an extraordinary number of badgers that survive, thanks to the expert care and skill they receive.

If you find a severely wounded, badly injured, or obviously sick badger, please take



extreme care and get expert help as soon as possible. Always remember, that frightened animals bite in self-defence, often with surprising speed and little or no warning and badgers have immensely powerful jaws which can inflict deep wounds on adversaries and compassionate would-be rescuers alike. Trained wildlife rehabilitators, RSPCA inspectorate, and experienced members of badger groups have the skill and know how to approach and make badgers safe in secure carrying cages so please wait until they arrive at the site.



# Northall Baptist Church

## A little Church with strong local links

### ZOOMing.....Hebrews 10:24-25

I have just read a report from Trans World Radio ([www.twr.org.uk](http://www.twr.org.uk)) about the Oasis radio transmitter they have recently installed in Central Africa which now reaches the extent of Nigeria and beyond. International news is full of reports of abductions and deadly attacks against Christians and others, principally from Boko Haram and Fulani herdsman. The locals desperately need to hear a clear accurate presentation of the Gospel message and radio, an invention of the last century, is able to do this without obstruction.

Fast forward more than 100 years and another technical development is playing its part, albeit for us, not in so extreme a circumstance. Most of us hadn't heard of ZOOM before March 2020, but many now use it for work, Church or play. And we now have ZOOM catch ups with family across the world and wonder why we did not do this before.

Here at Northall, first service in lockdown apart, we have been able to hold ZOOM Worship each Sunday. It's been a huge learning curve, starting with a better understanding of computers and the equipment to access the online world. It has also needed a slightly different skill set to the usual Sunday service. Initially we experienced some wobbly pictures and our singing of hymns was a little uncoordinated. Without an organ or keyboard, we use mainly **iSing Worship** (available online), to give us the opportunity to share worship in singing.

Some initially experienced difficulty with this unfamiliar technology, but it's surprising that if there is the desire, there's a way! Some, with help from the younger family, have managed to find skills that they didn't know they had! For those without the technology, ZOOM has dial-in access from your landline, and our eldest member, 90 plus, uses it, occasionally reading the scripture or praying. ZOOM has opened up our services to those who by age or infirmity would not normally be able to attend.

ZOOM has allowed us to support another Baptist Church and we continue to have 'visitors' from elsewhere - Wellingborough, Oxford, Romsey and Yeovil, and a variety of speakers. Most recently, for Mission Sunday, a talk was given by the Mission Aviation Fellowship about their work. Regularly we see twenty five to thirty each Sunday and you could be among them.



There is a desire to return to our Church building and the trustees have this under review. However we have to acknowledge we have a good number of our members in the shielded category and it is unlikely to be possible in the short term.

The pandemic has put us into isolation but our continuing shared worship ensures we are not isolated as we all share the, by now familiar, ZOOM wave!

Our Sunday services are on ZOOM at 11 am. Just contact us through the website (details below) for instructions on how to join us or ring the number below.

For those interested in the history of Northall Baptist Church, a free copy of the booklet, *Rebels in Green Pastures* can be supplied or downloaded from our website: <http://northallbaptistchurch.org/>

✉ Ruth Cox Tel: 07791 425625



**Eaton Bray  
Cricket Club**  
Est 1914

**2 senior teams  
FCCL Saturdays**

**1 Senior team  
Beds Sunday League**

**6 Junior teams at U9, 2xU11,  
2xU13 and U15**

**Come and join a progressive family  
club. For more information please  
follow us on Facebook & Twitter  
@EatonBrayCC**

**Enjoy your cricket with  
Eaton Bray in 2020**



**J Able bathrooms**  
**DESIGN - SUPPLY  
INSTALLATION**

We have suites in a wide range  
of styles to suite your budget.

Please ring for a home  
consultation and quote.

All building, tiling, and electrical  
work included.

**07891 449077**

W: [www.jablebathrooms.co.uk](http://www.jablebathrooms.co.uk)  
E: [ableplumbing@hotmail.co.uk](mailto:ableplumbing@hotmail.co.uk)



**Play  
Football**



**New players required**

**[www.eblions.co.uk](http://www.eblions.co.uk)**

**Come and play fun team  
football within our village  
community**

**Our coaches are FA Qualified  
and CRB checked**

**EB Lions your local youth football club are looking for keen boys and girls from ages 4 to 17 to join our friendly and inclusive club based in and around Eaton Bray, Edlesborough, Dagnall, Kensworth, Slapton, Totternhoe and the surrounding area. We have many teams and over 200 players playing exciting team sport! We welcome new players at any age group to start playing football within our village community. We are specifically looking for players for our U13 boys and U14 girls teams and our new U7 team and U9 Sunday team. Please get in touch if you want to play, we have teams at most age groups. Contact us at [enquiries@eblions.co.uk](mailto:enquiries@eblions.co.uk).**



# Nigel's Thoughts

## Methodist Minister



Dear Friends,

Have you ever written a letter to yourself, to be opened in a year's time?

In May, a certain newspaper invited some well-known individuals to write a letter to their 'post-lockdown self', to be opened in May 2021.

Julian Baggini, the British Philosopher and Author wrote

"I'm curious to know how, if at all, the world around you has changed. It feels like a time of momentous transformations, but I fear that you, like the rest of the world, overestimate your capacity for change. Please, prove me wrong: restore my faith that we naked apes are capable of learning our lessons"

I wonder what will change in us over the next year, as a result of what we have experienced together this year.

Surely we should treasure the many things that are in the process of being restored to us – being re-united with our families and friends, our freedoms - perhaps to travel, spend time on holiday, to get back to work (if we are fortunate enough to still be in employment), hopefully to finally feel safe – when we have all been inoculated with an effective vaccine.

Let us not forget to also treasure the lessons learnt from slower and surreal days, the like of which we had never seen before, and which may not come our way again.

In spite of all the suffering and anguish of a truly awful and shattering time, might we have learnt some things about what is most important? Such as family, community, supporting one another at times of great need, and caring for God's good earth whilst we can remember seeing it heal in front of our very eyes.

In church we often say and sing "This is the day that the Lord has made, we will rejoice and be glad in it".

Let us look for the things that God gives us to rejoice in, and may these renewed days bring us the freedom, from within which to count our blessings, and resolve to live more carefully and caringly with one another.

God bless,

✍️Nigel

**Edlesbray**  
Dog Walking & Pet Care

	Half Hour	Hour
One Dog	£6	£10
Two Dogs	£10	£15

Pet Care £5 per visit

Contact Lucy  
07977711350  
edlesbraydogwalking.co.uk

### Eaton Bray Cricket Club 100 Club Winners July 2020

£100	Bernie Tickell	no31
£25	Debbie Dunstan	no126
£10	Chris Crabb	no87

Eaton Bray Cricket Club is kindly sponsored by Meadow Marquees and Houghton Insurance.

Eaton Bray Cricket Club would like to thank all its members for their continued support in these very strange time



**City & Guilds**

**Leighton  
Plumbing & Heating**

**Oil Boilers**

**Serviced & Repaired**

01525 385250  
07774 567472

Email - [leighton-plumbing@ntlworld.com](mailto:leighton-plumbing@ntlworld.com)  
Website - [leightonplumbingandheating.co.uk](http://leightonplumbingandheating.co.uk)

Please see our reviews on  
[boilerjuice.com](http://boilerjuice.com) / [myboilerservice.com](http://myboilerservice.com)

Oftec registered & insured

Phasels, Billington Road, Leighton Buzzard  
LU7 9HH

**Crittercare**

Dog walking & pet sitting

We look after any animal from

Hamsters to horses

Prices start from £6 per day

Tel: 07756930814

Email: [crittercare142@hotmail.com](mailto:crittercare142@hotmail.com)

Or find us on Facebook @crittercare142

**Laptop & Computer**

Server, Printer, Apple, Setup, Repairs,  
Data recovery, Internet, Wireless, Network,  
Virus infection, Home/Office computer problems.

Services from £40.

Your local IT support, 7 days services, we visit you

No Fix - No Fee

Qualified, Experienced

[PClaprepairs@gmail.com](mailto:PClaprepairs@gmail.com)

01525 306316 – 07925 338435



**FREE INITIAL  
CONSULTATION**

**ALL ACCOUNTING,  
PAYROLL AND TAXATION  
SERVICES COVERED**

**Specialising in New Business Start-Ups**

- Fixed Fee Quotes
- Unlimited Email and Telephone Support
- Back Office Solution

(dealing with your back office accounts function  
enabling you to focus on the rest of your business)

**Please contact us for more information...**

Gable End, Sparrow Hall Business Park, Leighton Road, Edlesborough, LU6 2ES

**Call us on... 01525 229 539**

[enquiries@rileyaccounts.co.uk](mailto:enquiries@rileyaccounts.co.uk) • [www.rileyaccounts.co.uk](http://www.rileyaccounts.co.uk)

[@RileyAccounts](https://www.instagram.com/rileyaccounts) • Also on [f](https://www.facebook.com/rileyaccounts) [in](https://www.linkedin.com/company/rileyaccounts)

**"YOUR LOCAL ACCOUNTANT"**



**Stoten Gillam**  
chartered accountants  
chartered tax advisers

**Our aim is to provide an outstanding  
professional, cost effective and  
friendly service**

- ✓ Established over 50 years
- ✓ Traditional values with forward thinking and modern technology
- ✓ Full range of business and personal accountancy and tax services
- ✓ Latest cloud software
- ✓ Free initial meeting



**Tel: 01582 608601**

99 High Street South,  
Dunstable, LU6 3SF

**Contact us today:**  
[enquiries@stotengillam.co.uk](mailto:enquiries@stotengillam.co.uk)  
[www.stotengillam.co.uk](http://www.stotengillam.co.uk)  
[@stotengillam](https://www.facebook.com/stotengillam)

# toni's tootsies

mobile foot health care

-  **Fungal Infections**
-  **Ingrowing Toenails**
-  **Callus/Hard Skin**
-  **Cracked Heels**
-  **Nail Reconstruction**
-  **Verrucas**
-  **Nail Trimming**
-  **Corns**



Toni Nash is a fully qualified Foot Health Practitioner based in Slapton, Bucks... and she's ready to take your Call!

07484 749393  
tonistootsies@gmail.com  
www.tonistootsies.co.uk

## CDM Builders Ltd

07984086029

- GENERAL BUILDING
- NEW HOMES
- EXTENSIONS
- CONSERVATORIES
- ALTERATIONS
- BRICKLAYING
- GROUNDWORK
- PATIOS
- DIGGER AND/OR DRIVER FOR HIRE

With over 20 years experience in the building trade

All aspects of work undertaken by our own professional tradesmen to a very high standard

Please contact Clive for a free quotation  
T: 01525 222605 M: 07984086029  
Email: Clive.munt@hotmail.co.uk

## GENERALMECHANICALSERVICESLTD

VEHICLE SERVICING AND REPAIRS



**MOTs • MOT REPAIRS • SERVICING  
DIAGNOSTICS • TRACKING • AIR CONDITIONING  
TYRES • CAMBELTS • COLLECTION & DELIVERY  
WELDING & FABRICATION • BATTERIES**

All vehicles - all mechanical work!

1 HONEYWICK LANE, EATON BRAY, LU6 2BJ  
reception@general-mechanical-services.co.uk  
www.general-mechanical-services.co.uk



# 01525 222876



Peace of mind for motorists.



# All Trees & Hedges

Reliable & friendly service • Family run business  
Competitive prices • Qualified advice • Fully Insured

## Tree work undertaken

Tree felling • Precision dismantling • Crown reduction  
Crown thinning • Crown lifting • Formative pruning  
• Stump grinding • Stump removal  
Deadwooding • TPO / conservation area work

## Hedge work undertaken

Hedge reduction • Hedge planting • Hedge trimming  
Shrub clearance • Hedge laying

## Other Services

Grass Cutting • Fencing • Green Waste Recycling • General  
Garden Maintenance • Tree Lighting • Logs / Kindling

CALL NOW ON:

**07701 094 934**  
**01525 220 823**

E: [info@alltreesandhedges.com](mailto:info@alltreesandhedges.com)

W: [www.alltreesandhedges.com](http://www.alltreesandhedges.com)



# WHITE WATER

EXTERIOR CLEANING SPECIALISTS

## Driveway & Patio Cleaning

"We use an innovative, biodegradable method that eliminates dirt & kills mould, blackspot & algae, sanitising the surface. The results last 4 to 6 times longer than pressure washing alone."

- We also clean:
- Conservatories
  - Decking
  - Windows
  - UPVC
  - Solar Panels

01525 234120 | 07807 973871

email: [info@white-water.co.uk](mailto:info@white-water.co.uk)

[www.white-water.co.uk](http://www.white-water.co.uk)



## Frustrated with Home Technology?



Then contact us to solve your home technology problems. We can help with:

- WiFi/Broadband boosting or extending
- Smart TV and Wireless speakers
- Smartphone, PC and Printers
- Smart Home installations



Tel: 01296 534537

[www.thetechnologydoctors.co.uk](http://www.thetechnologydoctors.co.uk)



## fitness 4 fun



Get those muscles working! Tone and strengthen arms, legs, bums and tums – you'll look and feel great.

Why not give it a go? Only £6 per week for one hour of fun fitness. Pay-as-you-go, come when you can.

Come along and join our friendly group.

Everyone welcome.

No need to book – just show up.

What: Fitness4Fun with Kay

Where: Edlesborough Memorial Hall

When: Every Friday, 10:00-11:00 am

# OAKSTONE

## ARCHITECTURAL DRAWINGS AND PLANS

Oakstone Ltd specialises in design, drawing and building plans for:

- Planning applications
- Building Control approval
  - Residential
  - Commercial
  - Agricultural
  - Listed Building Consent

To arrange a FREE initial consultation please contact:  
[ash@oakstoneltd.com](mailto:ash@oakstoneltd.com) or call **07884 268079**

For more information about previous projects undertaken and what we do please visit:  
[oakstoneltd.com](http://oakstoneltd.com)



*...for all your pest solutions*

**Peter Tong**  
(RSPH Level 2)

**01525 220653**  
**07958 669706**

Email: [peter@nimbypest.org.uk](mailto:peter@nimbypest.org.uk)  
[www.nimbypest.org.uk](http://www.nimbypest.org.uk)



PASSIONATE ABOUT YOUR PROJECT

**07527 710 119**

[dave@jacksonconstructionuk.co.uk](mailto:dave@jacksonconstructionuk.co.uk)  
[www.jacksonconstructionuk.co.uk](http://www.jacksonconstructionuk.co.uk)

**JACKSON**  
CONSTRUCTION UK

Extensions & Conversions  
Kitchens & Bathrooms  
Driveways & Patios  
Fencing & Landscaping



## Lisa Arch Home Styling

Transform your home with my Dunstable - based home makeover service — designer looks tailored to fit your taste and budget.

07528 220311

Lisaarchhomestyling

[lisaarchhomestyling@outlook.com](mailto:lisaarchhomestyling@outlook.com)





# *Pampered Pups*

Mobile dog groomers

Call to book an appointment

07394 672646

pampered.pups8@gmail.com

www.pamperedpupsuk.com

We come to you

No Mess

No Stress



Grooming Washing Drying Nail Clipping



ARCHITECTURAL DESIGN  
CONSULTANCY

Residential extensions and  
conversions

Retail and Commercial  
Free initial consultation

Planning and Building Control  
Approvals Obtained

O: 01442 842 917

M: 07795 557 911

E: info@peakadc.co.uk

# CLARIDGE & HALL BROS LTD

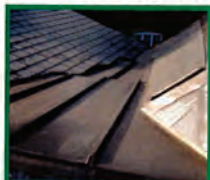
## ROOFING DIVISION

Quality work at competitive prices in Harpenden  
and the surrounding areas.

**WE SPECIALISE IN ALL TYPES OF ROOFING WORK**



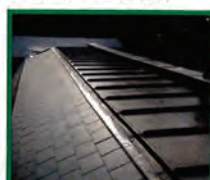
Handmade clay roof tiling



Lead work and Spanish slating



Handmade clay tiles roof in progress



Finished lead work and slating

Please telephone:  
Graham Parkins for advice or a  
**FREE QUOTATION** on **01582 840201**  
www.roofingharpenden.com

**CLARIDGE  
& HALL BROS LTD**  
**MARKYATE** est 1890  
**01582 840201**

# **Flex & Stretch Class**



**Stretch the entire body.  
Target primary muscle groups  
surrounding the hips, hamstrings  
& upper back including breathing  
techniques.**

**Everyone welcome  
No need to book – just turn up  
£5 pay as you go  
Tuesdays 11am till 12 noon  
Edlesborough Memorial Hall**

## **London Luton Airport**

With an increase in aircraft in the area and in particular when the wind is from the East, we are getting some aircraft flying directly over the village to join the flight path into the airport. If you are disturbed by the traffic flying over the village, there is a complaints hotline number: 01582395382. This is an airport number where you can register your concerns. It is important to do this if we are to reduce these disturbances over our village.

If you need to complain about Heathrow flight noise the number is 0800 344 844.  
Email: [noise\\_complaints@heathrow.com](mailto:noise_complaints@heathrow.com)



# **Come for Coffee at St Mary's, Eaton Bray**

**For a warm welcome and  
a cheering cuppa  
each month in  
St Mary's Church  
Eaton Bray  
10.30am - midday**



**1<sup>st</sup> Saturday of each month  
(except July - 2<sup>nd</sup> Saturday)**





A committee run playgroup set in Dagnall Village Hall for children aged 2 to school age

We operate five mornings a week from **9:15 - 12:15**



### Ofsted Comments

- Staff are consistently kind and caring which supports children to develop confidence and resilience
- Teaching is consistently good and children's safety is given the highest priority
- Children learn good manners and know how to treat each other with respect



If you think your child would be happy here please phone our Playgroup Leader, Ann Tobin on 07816 358 342  
[www.dagnallunderfives.co.uk](http://www.dagnallunderfives.co.uk)

## La Maison Bespoke Furniture

We build to your design.

Tables & Chairs

Bedroom Furniture

Kitchens

Floorboards



Made to measure solid wood furniture

Handmade carpentry

Fitted or Freestanding

Family run business for over 30 years

Visit our Website: [www.bespokefurniture18.com](http://www.bespokefurniture18.com)

Email: [astonint@btinternet.com](mailto:astonint@btinternet.com) or Phone: 07791 805159

# FIND OUT WHAT YOUR HOME IN DUNSTABLE IS WORTH



## Use My **FREE** Instant Online Valuation Tool

If you're thinking of moving, start by getting a **Hometrack Valuation Report** to see how much your home is worth.

Hometrack is the UK's largest automated valuer of residential properties and is relied upon by 13 of the 15 top UK high street lenders.

This report normally costs **£19.95** and includes **ALL** recent house sales near you!

Lacey Brooks  
Branch Director



Get your **FREE** online valuation report now at: **[www.EweMove.com/Dunstable](http://www.EweMove.com/Dunstable)** or call: (24/7) **01494 292 359**



EweMove respects any existing sole agency agreement already in place with another agent.

# Edlesborough Baptist Church

Pastor: Alister King  
gbcepastor@gmail.com  
07572 395687

## Weekly Activities

### Sunday Services

11am Morning Worship  
6.00pm Evening Worship

### 2nd Monday

2.30pm SilverLink for over 60s

### Wednesday

10am (term time) Caterpillars Toddler Group  
7.30pm LIFE Groups  
(ring for details and to confirm venue)

Find us on Facebook @gbce2014

## The Salvation Army Booth Place



### Sunday

Footprints (Sunday School) 9.45 - 10.45am  
(Term time only)  
Morning Worship 11am

### Tuesday

Coffee Morning 10 - 11.30am  
(Alternate weeks)

### Wednesday

Home League 2.30 - 3.30pm  
(Ladies meeting but all welcome)  
Champion's Club (Term time only)  
5.30-6.30pm (Ages 5 to Year 5)  
6.45-7.45pm (Year 6 and above)

### Thursday

Girls' Night Out  
(1st Thursday of the month) 7.45pm  
Ladies Fellowship  
(Last Thursday of the month) 7.30pm

**For further details please contact us on  
01525 222087 or email  
eaton.bray@salvationarmy.org.uk**



## Stay & Play Toddler Group

# Musical Monkeys

Eaton Bray Village Hall  
10-11.30am on Fridays

£4.50 for one adult and child  
£1 for extra children/adults  
0-6 months free

## Holiday Home to Let Bridport Dorset



Sleeps 7 - Fully equipped  
Close to all amenities  
Visit: [www.bills-house.com](http://www.bills-house.com)  
[enquiries@bills-house.com](mailto:enquiries@bills-house.com)  
or tel. 07850 601007



# Prestigious Blinds & Shutters

BLINDS MADE EASY FOR YOU

Tel 01525 591 001

[prestigiousblindsandshutters.co.uk](http://prestigiousblindsandshutters.co.uk)



Book your  
FREE design  
consultation  
now...



## Beautiful, Elegant and Bespoke

Premium made to measure blinds and shutters supplied and fitted

**IN SAFE HANDS - AT HOME SHOWROOM SERVICE**

We are a local trusted family business; our experienced design consultants visit you at home and can advise on styles and solutions to suit your budget and style.



# Signal Crayfish



In the 1970s, the British government introduced the signal crayfish (*Pacifastacus leniusculus*) from North America to UK waters for export to the lucrative Scandinavian market. The crayfish plague had ravaged native crayfish populations in Europe and it was seen as an attractive commercial species. Unfortunately it is a carrier of crayfish plague and is thought to be responsible for passing the deadly disease to the native white-clawed crayfish (*Austropotamobius pallipes*) in the UK.

Signal crayfish soon escaped from commercial fisheries and began to outcompete the native

white-clawed crayfish for habitat and food. They have decimated the native crayfish populations where present. Signal crayfish cause further problems by burrowing into river and canal banks causing erosion, bank collapse and sediment pollution. The signal crayfish is a voracious predator, feeding on a variety of fish, frogs and invertebrates, as well as plants, and even eating individuals of its own species.

The signal crayfish is lobster-like in appearance and reaches a maximum size of 16-18cm.

Its claws have red undersides with a small turquoise/white blotch on the upper surface at the claw hinge. The upper surface of this species is usually brown to greenish-brown, while the lower surface is often a contrasting bright orange or red. The signal crayfish has a distinctly smooth ridge running along the middle of the rostrum (the foremost projection of the carapace).



In comparison, the native white-clawed crayfish is much smaller (under 12cm), with a brown to olive pitted body. The underside of the claws are usually a dirty-white colour - never red.

The white-clawed crayfish was once a widespread and common species in English and Welsh rivers, but has suffered a decline of 50 – 80% across its European range in the last ten years and is classified as 'endangered' on the IUCN red list of threatened species and is at risk of global extinction.

The signal crayfish occurs both in still and slow-flowing freshwater environments, including rivers, streams, lakes, reservoirs and canals. This species is also known to be able to tolerate slightly salty water.

It takes shelter under rocks and boulders, within tree roots or in burrows and cavities within banks. In the winter, adult signal crayfish shelter in burrows and enter a state of torpor. These burrows are formed of many inter-connecting tunnels, and can be up to

two metres deep.

The signal crayfish has a relatively high reproductive potential, with the female of this species laying between 200 and 400 eggs in the autumn. The female then carries the eggs around under her tail through the winter until the spring, when the eggs hatch. Once hatched, the young remain attached to the female's tail until they are released in May or June. Signal crayfish reach sexual maturity at about 2 or 3 years old, and can live for up to 20 years.

The signal crayfish is well established in England and Wales, especially in the south-east of England. They are not as prevalent in Scotland but several well-established populations have been recorded.

Signal crayfish are able to disperse up and downstream, cross most natural and artificial barriers and travel over land to reach water bodies nearby. Dispersal distances of over 300m in 2 days, and several hundred metres over land in one night have been recorded. Dispersal has been aided by human transfer and release of individuals, although this is now illegal.

Signal crayfish's extensive burrows can destabilise banks, causing erosion and bank collapse, increasing flood risk and the silt load in the water. Their burrows displace threatened riverside species such as Britain's water vole (*Arvicola amphibius*).

The native crayfish is being driven towards extinction through the spread of crayfish plague and competition for resources. Signal crayfish are bigger, grow faster, reproduce more quickly and are more tolerant of a wider range of conditions than the native white-clawed crayfish.

They feed on fish and amphibian eggs, tadpoles, juvenile fish, aquatic invertebrates, detritus and aquatic vegetation and where present reduce populations of native species and affect food webs.

Signal crayfish burrowing can cause erosion of riverbanks. Burrows can be up to 2m deep, with many inter-connecting tunnels that weaken the bank. This can contribute to problems with flooding, livestock safety and stability of structures built on the banks.

In the UK, the signal crayfish is known to be predated by otters (*Lutra lutra*), American mink (*Mustela vison*) and predatory fish such as Atlantic salmon (*Salmo salar*) and European eels (*Anguilla anguilla*).

Trapping trials have concluded that although numbers may be reduced during the short-term, traps may favour the capture of larger individuals. An unintended consequence of selective harvesting is the increased growth and earlier maturation of juvenile crayfish, which can cause the population to increase. It is not, therefore a sustainable long-term solution.

Anyone wishing to trap signal crayfish from the wild must obtain a trapping licence from their local Environment Agency.

## MEETING PLACE AVAILABLE

Does your leisure group/voluntary organisation need premises for your regular meetings?

**Edlesborough Methodist Church**, centrally located on the corner of Cow Lane opposite The Green, has accommodation that might suit your purpose.

**Please contact 01525 223093 for further details.**

# Dagnall Weather Station (AONB)

## Weather Conditions for June 2020

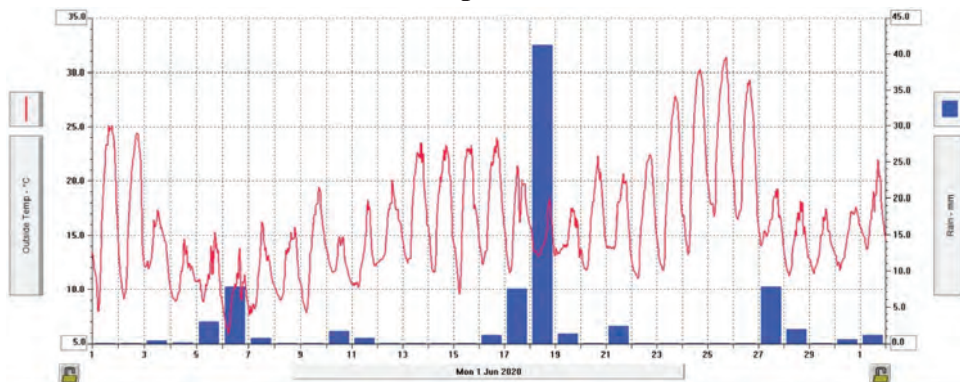
Elevation: 450 ft - Latitude: 51° 50' 13" North - Longitude: 0° 33' 34" West



May's hot weather continued into June, but was short lived. By the 3rd, the temperature had dropped by 10 degrees and became unsettled with occasional showers lasting until the 12th. The temperature then rose into the mid-to-high teens followed by rain on the 18th when it was particularly wet and we recorded rainfall of 41.2mm for that day. By the 23rd, the temperature soared to reach 31.4°C, but then it dipped again so the month ended on a cooler note with a few showers. Overall, June was a strange month with the temperature as low as 5.9°C and as high as 31.4°C. Rain was recorded on fifteen days totalling 79mm, with more than 50% of that falling in one day. In fact, rainfall was at 40% above the 13 year average and a complete contrast to May's 3.4mm. Looking back to the month of June in previous years, we had 154.0mm of rain in 2012 and just 2.8mm in 2018. It just goes to show that Britain's weather remains as unpredictable as ever.

	High	Date/Time	Low	Date/Time
Temperature:	31.4°C	24 June 16.30	5.9°C	6 June 05.30
Mean Temperature	15.8°C			
Dewpoint:	18.0 c	26 June 10.00	2.6°C	5 June 18.00
Humidity:	95%	17-18 June	30.2%	2 June 18.00
Barometer:	1024.4mb	22 June 09.30	994.3 mb	5 June 06.30
Wind Speed	32 mph ssw	27 June 18.00	Months avg.	5.4 mph
Wind Chill:	31.3°C SE	25 June 17.30	3.1°C	6 June 06.30
Dominant Wind:	SSE			
<b>Rainfall</b> * <i>T= total rain days and moisture. R= Actual rain</i>				
*Rain Days: 15(T), 15(R)	Wettest Day 18th		41.2mm	1.622ins
Monthly Rain:	Total	June 2020	79.0 mm	3.11 ins
Yearly Rain:	Total	6 Month	400.6 mm	15.77ins

Plot Show the Temperature and Rain Fall



For weather data 24 hours a day, updated every 15mins, visit: [www.dagnallweather.co.uk](http://www.dagnallweather.co.uk). If anyone has a question, comment or wishes to contact me please email: [david@dagnallweather.co.uk](mailto:david@dagnallweather.co.uk) or telephone: 01442 843883. Dagnall weather now has an app for your iPad & iPhone! Just go to the apple store, search for Wunderstation and follow the instructions to Dagnall Weather Station. Now updated every minute.

# Don't Let ZSL Go Extinct, Says Sir David Attenborough

**Sir David Attenborough will front a landmark TV appeal to save conservation charity behind London and Whipsnade Zoos “from extinction”**

“ZSL’s work is vital in driving forward a vision of a world where wildlife thrives, but ZSL now faces its toughest challenge to date – the national institution is now itself, at risk of extinction.”

In an extraordinary show of support, Sir David Attenborough has for the first time lent his voice to a TV appeal to raise funds for ZSL, and its two zoos, London and Whipsnade. Painting a stark picture of the jeopardy faced by the iconic institution, this previously unthinkable possibility is now a frightening reality due to the extended closures of its zoos.

The compelling appeal highlights ZSL’s world class zoos and the global breadth of its science and conservation work and will air for the first time from Thursday 9 July across Sky channels.

The emotive video was produced by agency Wunderman Thompson who donated all creative services to help ZSL, with the broadcast slots also given for free; funds are being channelled through JustGiving at [zsl.org/justgiving](http://zsl.org/justgiving)

As well as providing the highest level of animal care, welfare and education at its two zoos, ZSL relies on income from zoo ticket sales to fund global wildlife health research at the revered Institute of Zoology, and to support its active conservation projects in more than 50 countries around the world.

ZSL Director General Dominic Jermy said: “The closure of London and Whipsnade Zoos put us under immense financial pressure. Our zoos may have been able to reopen their gates, but with strict social distancing measures and heavily restricted visitor numbers we have no way of recouping what was lost; we’re fighting our biggest challenge in our 200-year history.”

The Society, founded as the world’s first scientific zoo in 1826, is in a perilous position. Closed to the public since the end of March, ZSL’s two zoos were shut for an unprecedented three months. With the Society’s core income stream cut, but no compromises made on animal care, the lockdown put immense pressure on the charity’s reserves.

Jermy added; “Unlike any other UK zoo, our zoos are the lifeline for ground-breaking research at the world-renowned ZSL Institute of Zoology and fund our global conservation projects – work that has never been more vital. As well as educating and inspiring millions of people to make a difference for wildlife, we’re at the forefront of research to understand how diseases such as coronaviruses transfer from wildlife to humans, and we’re using our expertise to help find new ways for humans and wildlife to peacefully co-exist. The world cannot afford for our work to be stopped; but we need help to keep going.”



*David Attenborough scarecrow  
from the Scarecrow Festival  
Lodge Farm, Northall Road, Eaton Bray*

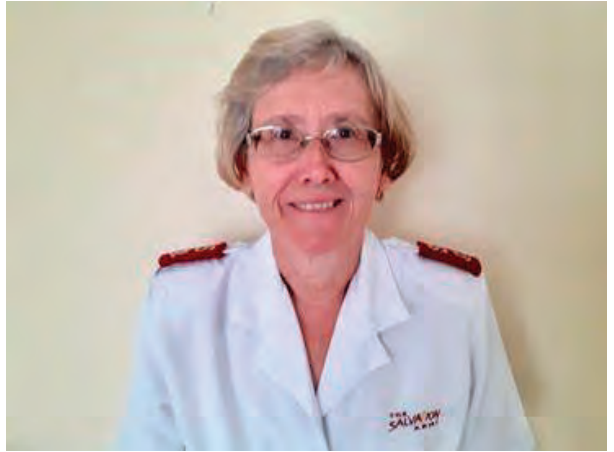
**Support the appeal at [www.zsl.org/justgiving](http://www.zsl.org/justgiving)**



# Salvation Sound



*The Salvation Army hall  
in Booth Place LU6 2DR*



Dear Reader

My name is Allison Gaudion and along with my husband Andrew and youngest son Johnathan we moved to Eaton Bray this July 1st. I am the new Salvation Army Officer in Eaton Bray and I am looking forward to getting to know you all and the village of Eaton Bray.

My husband is also a Salvation Army Officer but works in London at our Headquarters and so will be travelling every day to London. We have three children, Craig who is a Church of England Minister and with his wife Gemma and two girls Hannah and Phoebe is assistant minister at St Pauls church in Liverpool Widness. Fiona, our daughter lives in Wickford with her husband Gary and they have two girls Ella-Mae and Chloe. Fiona is a senior school teacher and Gary is an air conditioning engineer. Jonathan also works for the Salvation Army and works at our International Headquarters in London which is near St Pauls Cathedral.

We are very excited to come to Eaton Bray and hopefully will be able to get to know you all very soon. If you see me in the village please stop to say Hello! These have been difficult times but with the restrictions being slightly reduced it will make it somewhat easier to find our way around and settle into village life. God Bless you all.

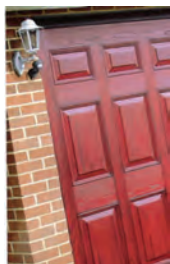
Allison Gaudian (Major) Eaton Bray Salvation Army



# Premier Garage Doors & Gates



## Quality Garage Doors



- ✓ **Superb choice of designs in steel, timber and fibreglass**
- ✓ **Any size door made to your requirements**
- ✓ **Large selection of spares & fast repair service available**
- ✓ **New or existing doors converted to automatic**
- ✓ **Professionally fitted by own expert craftsmen**
- ✓ **Prompt free estimates & advice**
- ✓ **We cover all areas**



**(EST 1984)**



Unit 7, Sparrow Hall Farm, Leighton Road, Edlesborough LU6 2ES

**01525 220212**

**[www.premiergaragedoors.co.uk](http://www.premiergaragedoors.co.uk)**

# JANES

FLOORING DIGITAL APPLIANCES CYCLES SERVICE

*The 5th Generation Family Business on your doorstep*



*Andy & Louise 2020*

We are  
**OPEN**  
as usual


“Getting back to some sort of normality”


Our opening hours


9-5.30pm

Closed on Thursday

*“Don’t drive on by, pop in to say Hi...”*

 [www.janesltd.co.uk](http://www.janesltd.co.uk)

 01525 220208

 4-6 High Street  
Edlesborough  
LU6 2HS

With special thanks to Mark  
and the team at *Aubergine*  
for our smart new look.

[www.aubergine262.com](http://www.aubergine262.com)