

FOCUS May 2020

**The local village magazine just for Us!
Eaton Bray, Edlesborough, Northall & Dagnall
Focus is online at www.thefocusmagazine.co.uk**

A beagle dog is walking away from the camera on a dirt path. The dog is wearing a black harness and a bright green leash. The path is uneven and has some grass. In the background, there are trees and a building under a clear blue sky.

Stay Safe

The White Horse
Eaton Bray

Market Square
Eaton Bray
Beds
LU6 2DG
01525 220 231
www.eatonbraypub.co.uk



Stay at home
Protect the NHS
Save lives



Thanks to all of the brave key workers

*Eat, Drink and relax
at The White Horse*

Due to the current situation re Coronavirus, this issue was unable to be printed and distributed and is only available online at www.thefocusmagazine.co.uk.

The Focus Magazine Committee

Editor: Sally Siddons

34 Wallace Drive, Eaton Bray 221733

Email: sallysid@hotmail.com

Dagnall Representative: Richard Bamford

31 Dunstable Road, Dagnall 01442842344

Circulation Manager: John Plater

41 Church Lane, Eaton Bray 221095

Treasurer/Leaflet Enquiries: Ken Coates

10 The Nurseries, Eaton Bray 220868

Business Advertising: Sally Siddons

34 Wallace Drive, Eaton Bray 221733

Design and Layout: Tracey Moren

(Moren Associates Limited) 01525 229695

Printed by: Priory Press

Dunstable 01582 699851

Copy for publication to the Editor by the

10th of the month

Focus accepts no responsibility as to the accuracy or content of any advertising or articles published in 'this' magazine, neither do they reflect the opinion of members of the Committee.

© Articles published in Focus may not be reproduced without permission.

Kindly Note

Focus would like to remind contributors that the deadline for articles is the 10th of the preceding month

If the event you wish to advertise falls in the first week of the month, it is advisable to get the details into Focus a month earlier. The magazines are not delivered from the printers until the first of the month, therefore it takes a few days for them all to be circulated throughout the village.

✍️Editor

NORTHALL BAPTIST CHAPEL

Chapel Lane, Northall

(just beyond the 30 speed limit signs on the road towards Leighton Buzzard)

Everyone is welcome to our Sunday worship each week between 11am and 12.30pm including tea/coffee and time to talk together.

For more information contact:

John Hazell 01525 218142

Email northallchapel@btinternet.com

Web: www.northallbaptistchurch.org

There has been a Baptist Chapel in Northall for more than 200 years. Today we continue to seek to worship God, serve him in our daily lives and support and encourage one another in the difficult and the joyful times.

Focus is online at www.thefocusmagazine.co.uk

After Lockdown Village Diary



Weekly

- Mon-Fri (term time) Eaton Bray Pre-school, Eaton Bray Lower School, 01525 220468
- Mon-Fri (term time) Dagnall Under 5's, Dagnall Village Hall, 9.15am - 12.15pm, Mrs Ann Tobin 07816 358342
- Mon-Fri (term time) Edlesborough Pre-School, Edlesborough School, 01525 220431
manager@edlesborough.bucks.sch.uk
- Mon-Thu (term time) Totternhoe Pre-school, mornings, Totternhoe Lower School, Michelle Urbanowicz on 01582 668841
- Mondays Pilates, 10.45am, Totternhoe Memorial Hall, Lisa: 07832 230774
- Mondays Dagnall Community Choir, All Saints Church 7.45 – 9.45pm
- Mondays (term time) Movement and exercise classes with a dance flavour, Northall Village hall 2-3.30. Contact Jan 01442 864271.
- Mondays Curtain Call Youth Theatre 5-7.30pm, Eaton Bray Village Hall, Gavyn 01525 220525
- Mondays Curtain Call Theatre Group - 7:30-10:30pm Eaton Bray Village Hall, Sheila - sdtwinkletoes@yahoo.co.uk
- Mondays KFPA ISTD Classical Ballet classes, 3+yrs, 4.15pm, Edlesborough Memorial Hall, www.kfpa.co.uk
- Mondays Cubs (8-10 ½ years old), 6.30pm - 8pm, 1st Eaton Bray & Edlesborough Scout Hut, High Street, Edlesborough. Contact Liz Coates 01442 842550
- Mondays Yoga, 6:45pm, Edlesborough Memorial Hall, contact 07837 727302
- Mondays Barre, 8pm, Edlesborough Memorial Hall, contact 07837 727302
- Tuesdays Pilates, 10-11am, Eaton Bray Village Hall, Nicky Roussou 07861 162680
- Tuesdays Totternhoe Baby & Toddler Group, 9.30-11.30am, St. Giles Church Hall, Ruth Allen, 01525 222468 or 07796 265174 or email ruthallen002@gmail.com
- Tuesdays Tap & Ballet Classes, JoAnn Latus School of Dance, 4-8pm, Eaton Bray Village Hall, 07800 518654
- Tuesdays Beginner's Boxercise, 6-7pm Dagnall Village Hall, Josh Thompson 07456 574405 or jtpinfo@gmail.com
- Tuesdays Coffee Morning, Bring & Buy, Table Top Sale, 10-12noon, Salvation Army Hall, Booth Place, Eaton Bray
- Fortnightly Pilates, 8pm, Northall Village Hall, Lisa: 07832 230774
- Wednesdays Northall & District Age Concern Wednesday Club, 10am - 3pm, Northall Village Hall, Contact Barbara on 07854 230243
- Wednesdays (term time) Caterpillars Baby and Toddler Group 10am to 11:30am, Grace Baptist Church, Moor End, Edlesborough, £1 per family unit, Contact Alister 07572 395687
- Wednesdays Pilates 6.45 & 7.45pm, Dagnall Village Hall, Andrea on 07855 138005 or andrea@naturalpilates.co.uk
- Wednesdays Art of Ju Jitsu martial arts class, Eaton Bray Village Hall, 7 -7.45pm ages 6-15yrs
- Wed (term time) Art Courses, Whipsnade Village Hall, 9.30am – 12.30pm. Lorna Moore 07896 619660
- Thursdays Yoga, Northall Village Hall, 11.30am-1pm 01525 377542
- Thursdays Jazzercise, 9.30-10.30am, Eaton Bray Village Hall, Angela Veryard, 01525 715208
- Thursdays KFPA Street dance classes 4+yrs 4pm, Edlesborough Memorial Hall, www.kfpa.co.uk
- Thursdays Tae Kwon-do, Dagnall Village Hall, 5.45-7.30pm 07813 755785
- Thursdays Clubbercise 7.30 - 8.30pm. Eaton Bray Hall - Gina Flitton 07846421756
- Thursdays Beavers (6 to 8 years old), 6.15-7.30pm, 1st Eaton Bray & Edlesborough Scout Hut, High Street, Edlesborough. Contact: ebebeaverleader@ebescouts.co.uk
- Thursdays Explorers Scouts (14-18 years old), 8pm-9.30pm, 1st Eaton Bray & Edlesborough Scout Hut, High Street, Edlesborough. Contact Simon Betts, lionheartesu@hotmail.co.uk
- Thursdays Intermediate Boxercise, 7.30-8.30pm, Dagnall Village Hall, Josh Thompson 07456 574405 or jtpinfo@gmail.com
- Thursdays Eaton Bray Methodist Church Social Afternoons, 2 - 4pm, All Welcome

After Lockdown Village Diary

Thursdays	Retro Line Dance Class. 11.15am to 12.45pm. Eaton Bray Village Hall. Beginners welcome. www.jukeboxjunction.co.uk info@jukeboxjunction.co.uk 07864212171
Thursdays	Mixed Ability Yoga Class, 11.30am to 1.p.m. Northall Village Hall, Contact Dee Lock on 01525 377542
Fridays	Keep Fit class, Edlesborough Memorial Hall 10 - 11am
Fridays	Tap & Ballet Classes, JoAnn Latus School of Dance, 4-8pm, Eaton Bray Village Hall, 07800 518654
Fridays	Stay & Play toddler group, ‘Musical Monkeys’ at the Eaton Bray Village Hall, 10-11.30am, £4.50 for one adult and child, £1 for extra children/adults, 0-6 months free
Fridays	Scouts, 10 ½ to 14 years old), 7.00-8.30pm, 1st Eaton Bray & Edlesborough Scout Hut, High Street, Edlesborough. Contact Mark Owen, 07899 892344, ebescoutleader@ebescouts.co.uk
Fridays (term time)	“Little Luvvies” baby ballet classes 10am-11.30am. Contact Emma Whittemore on 01525 376124
Fri (term time)	Art Courses, Whipsnade Village Hall, 9.30am – 12.30pm. Lorna Moore 078 9661 9660
Saturdays	Jazzercise, 9.30-10.30am, Eaton Bray Village Hall, Angela Veryard, 01525 715208
Saturdays	KFPA Musical Theatre classes 4+yrs www.kfpa.co.uk , 10am, Edlesborough Memorial Hall
Saturdays	Bootcamp Fitness, 9-10am, Dagnall Recreation Ground, Josh Thompson 07456 574405 or jtptinfo@gmail.com
Sundays	Sunday Worship at 11am and 6pm Edlesborough Baptist Church, Moor End, LU6 2FL Contact Alister on 07572 395687
Sundays	Karate for kids & adults, 4-5:30pm, Eaton Bray Village Hall, Contact 07500 007779
Monthly	
1st Monday	Eaton Bray Parish Council Meeting, 7.30pm, The Coffee Tavern (except Jan-2nd Monday)
1st Monday	Eaton Bray W.I. Meeting, 7.30pm. Eaton Bray Methodist Church Hall. Contact Margaret Jones on 01525 220991
1st & 3rd Mon (ex. Bank Hols)	Knit ‘n Stitch at Edlesborough Village Hall, 1:45pm to 3:45pm. Contact Heather Westwood (01525 839083)
2nd Mon	Film Society, Sep to May, 2pm, Eaton Bray Village Hall, Graham Chappell 01525 220883
1st & 3rd Tues	Dunstable & District Orbit (social and charitable) Club meet at Dunstable Rugby Club at 8pm. For details contact 01525 222441 or 01582 755147
1st Saturday	St. Mary’s Church, Eaton Bray Coffee Morning & Plant Sale, 10:30am - 12 noon
1st Sunday	St. Mary’s Edlesborough Open Days, 2-5pm, May to September inclusive
2nd Monday	SilverLink, 2.30-4.00pm, Grace Baptist Chapel Edlesborough – activities, talks, friendship & refreshments for the over 60s
2nd Tuesday	Dunstable & District Local History Society meeting, 7.45pm, Methodist Church Hall, Dunstable (opposite Wilkinson)
2nd Tuesday	Edlesborough W.I. Meeting, 7.30 pm, Edlesborough Memorial Hall. Contact Sue Bingham on 01525 222522
2nd & 4th Tues	Dagnall Church Welcome Club, 2-4pm, Dagnall Church. Contact Catherine Hayden 01525 220527
2nd Wednesday	St.Mary’s Ladies Guild, 2pm, St.Mary’s, Eaton Bray
2nd Wednesday	Eaton Bray & Edlesborough Lions Club, 7.30pm, The Coffee Tavern
2nd Thursday	CAMEO Coffee, tea & chat, 10am-12noon, Edlesborough Methodist Church
2nd Saturday	Workshops Dynamic Yoga 9.30-11am £10 Eaton Bray Coffee Tavern, Keira 07936 693696
3rd Thursday	Edlesborough Parish Council Meeting, 7.30pm, Memorial Hall
3rd Sunday	Lunch club 11.30 to 2.00pm, Eaton Bray Village Hall, Chris Hewitt 222288
Last Saturday	Coffee Morning, 10:00-12 noon, Edlesborough Methodist Church

Rita Messett

Terry, Rita's partner, her children Giles, Clare, Lianne and Lianne's children would like to thank everyone for their kind thoughts, support, cards and flowers. Also the donations following Rita's passing on February 27th.

Rita was a lovely friendly intelligent lady who influenced many lives with her care, kindness and support. Despite fighting cancer for twenty years she never let it change her or affect her work with the Hospice at Home Volunteers Charity.

She was also the author of the monthly book review in the Focus magazine for the past twelve years and assiduously read each book, whether she liked it or not. Rita loved our villages and will be sadly missed by so many of us.

Friend of Bucks



The Wednesday Club



The Wednesday Club, who meet every Wednesday in Northall Village Hall, are seeking additional volunteer drivers of their 12-seat Minibus. We pick up members from their homes in the surrounding villages between 9:15am and 10am, and then take them home again at 3pm. If you are interested, please contact Peter Williams, Chairman of the Trustees, on 01442 842 506.



Meals on Wheels

Meals on Wheels deliver hot meals 365 days a year. The charge is £6.99 for a two course meal which is delivered to the home, and to the table if the person is disabled and cannot take delivery at the door. They also deliver a Teatime snack which comprises of a sandwich, piece of cake and fruit; the charge is £3.25.

There is a large choice of meals to choose from and payment is via direct debit.

So, if you are aware that somebody near you could use this service here is the telephone number: 01225 560440.

Village Info



EDaN Community Transport
Peter Williams: 01442 842506

Village Hall Booking Contacts

Northall: Lorna Cabbage Tel: 07857 318696 www.edlesborough-pc.gov.uk/nvh

Email: northallvhbookings@gmail.com

Eaton Bray: Norman Lee Tel: 07975 797202

Email: bookings@ebvh.co.uk Website www.ebvh.co.uk

Dagnall: Liz Coates 01442 842550 & Trish Owen 07762 151364

Email DVH_Bookings@outlook.com

Edlesborough Memorial Hall: Penny Pataky, Tel: 01525 229358

Email: manager@edlesborough-pc.gov.uk

Police Contact Numbers...

making neighbourhoods safer together

General Assistance (Recommended Number): 101 Emergency: 999

Bedfordshire Police (Eaton Bray)

Leighton Buzzard Police Station/Kathryn Horgan: 01582 473411

Typetalk: 18001 01582 473418

Email: LPT.LeightonBuzzardLinslade&Rural@bedfordshire.pnn.police.uk

Thames Valley Police (Edlesborough, Dagnall & Northall)

PCSO Jackie Dodson

Email: NHPT@thamesvalley.pnn.police.uk

Defibrillator Locations

These units are registered with the Ambulance Services. To access them, please phone 999. You will be given the access code and the location of the unit will be confirmed. The defibrillator is easy and safe to use. The units can be found on the outside walls of the following locations:



Dagnall: Red Lion Public House

Eaton Bray: The Coffee Tavern

Northall: The Swan Public House

Edlesborough: Edlesborough Memorial Hall & Baptist Church, Summerleys



Helpline: 07930987064

Manned phone hours:

9am to 5pm, Monday to Friday

(An answering service is available for out-of-hours calls)

Call us if you want help with getting to the surgery/hospital, collecting prescriptions, minor errands or d-i-y jobs, form-filling, walking your pet, on-line shopping support etc. or if you would welcome our befriending service.

We help people of Eaton Bray and adjacent villages

Eaton Bray with Edlesborough

Parish News

Vicar: Rev'd Joy Cousins

The Vicarage, 11 High Street, Eaton Bray - Tel: 01525 220261

Curate: Rev'd Stephen Burge

Church Warden & Pastoral Matters: Catherine Hayden (01525 220527)

Reader: Gordon Gray (01525 220136)

Website: www.stmaryseatonbray.org.uk Facebook: St Mary's Eaton Bray

As I write this we are still in lockdown, confined to our homes as a result of the coronavirus pandemic. This is the most challenging situation which many of us have faced in our lifetimes. It is calling for great resilience, courage and inventiveness from us all. Many are worried about friends and family; about finances and the future. How will life be after the pandemic? Will we ever get back to normal? At times of deep difficulty, like many Christians I turn to the Bible. Within its pages are words of wisdom for almost every situation we can face. It covers the writings of generations of people. In fact, the Bible is a collection of books written over more than 2000 years. So I believe it has things to say to us even in our current situation.

During Holy Week, the week leading up to Easter, some of the Bible readings are from the Old Testament book of Lamentations. This is a collection of five poems lamenting the destruction of Jerusalem in 586 BCE. The poet talks of utter destruction, shattered lives, ruin and exile. There is a sense of grief, of profound sorrow and lament for what had gone before. Yet in the midst of it all, there is hope. The poet writes:

'The thought of my pain, my homelessness, is bitter poison; I think of it constantly and my spirit is depressed. Yet hope returns which I remember this one thing: the Lord's unfailing love and mercy still continue, fresh as the morning, as sure as the sunrise, the Lord is all I have, and so I put my hope in him.' (Lamentations 3 verses 19-24)

There is hope in God. And there is also hope in the wonderful expressions of solidarity and neighbourliness during this pandemic. Just to quote one email I received: 'In amongst the enormous life changes, the fear, hardship and uncertainty there are also wonderful examples of courage, humour, kindness, generosity and caring. Many, many silver linings to be sure!' Times of crisis often bring out the very best in people and the current crisis is no exception. If you are in need of support or a friendly chat, please call Gaye from St Mary's Pastoral Group on 07807924218.

I believe that we can take comfort from the Easter message. Jesus has been raised from death so that we too can have the gift of eternal life as we put our trust in him. Like the first disciples, we will not be immune from trouble, challenges and difficulties. But we need not be afraid for God is with us, whatever our circumstances. He loves each one of us. His 'unfailing love and mercy still continue, fresh as the morning, as sure as the sunrise.' There is hope for the future.

A prayer for the coronavirus pandemic.

Keep us, good Lord,

under the shadow of your mercy

in this time of uncertainty and distress.

Sustain and support the anxious and fearful,

and lift up all who are brought low;
that we may rejoice in your comfort
knowing that nothing can separate us from your love
in Christ Jesus our Lord.
Amen.

With every blessing, Joy, Vicar of Eaton Bray with Edlesborough
✍ Joy Vicar of Eaton Bray with Edlesborough



A Message From Joy

Sunday services are available on the website www.stmaryseatonbray.org.uk from Sunday. It is very easy to use- simply press the button on the homepage. You can also access it via YouTube and the St Mary's Facebook page. Thank you to Eileen Bennett who has contributed this week's intercessions. As always, thanks to Stephen Axford for his wonderful music and to Stephen Burge for leading and producing the service.

It is always good to hear from you so do keep in touch.

With love and prayers,

✍ Joy

Services at St Mary's Church

SUNDAYS : **8.00am** HOLY COMMUNION
 10.00am PARISH SUNG HOLY COMMUNION

On Third Sunday of each month:

10.00am – WORSHIP FOR EVERYONE a shorter, less formal service for families. (For anyone wishing to attend a service where Holy Communion is offered, there is a Family Communion at 10.30am at All Saints' Church, Dagnall, where visitors are assured of a warm welcome).

WEEK-DAYS:

Wednesday: 10.00am Holy Communion
EVERYONE WELCOME AT THESE SERVICES

In light of the current Coronavirus situation the Pastoral Care Team at St. Mary's, Eaton Bray welcomes your assistance in identifying any of our parishioners who might be sick or otherwise benefit from their support during this challenging time. Please contact Gaye Soule on 07807924218 (m) or send an email to admin@stmaryseatonbray.org.uk in this regard.

Eaton Bray Good Neighbours



During these troubled and worrying times, Eaton Bray Good Neighbours have been there to help in our Community. Since the start of this emergency, our volunteers have increased by 30 caring people coming forward to give their time and help to so many members of our community. We

have helped lots of the older people in our village with their shopping, and medication collection. During the last week, our phoneholders have received some 70 phone calls, with requests for various forms of help. We have assisted in arranging a broken hearing aid replacement, liaising with Social Care to commence daily carers, and setting up meals on wheels accounts for those in need. Our Nisa local store donated toilet rolls which kind volunteers delivered around the village.

‘Good Neighbours In Touch’ has been launched. We now have over 70 people in our community who are receiving a regular phone call from one of our volunteers. So many kind volunteers have come forward to help with a phone call. A chat on the phone when you are living on your own, is always very welcome. It is a good way to find out if any help is needed and to have a chat about the worries and concerns we all have at the moment.

We had an established Befrienders Group within the Eaton Bray Good Neighbours Scheme of some 10 people who met up monthly with those we visited. This has now tripled in size, with the kindness of more volunteers, as we pull our precious community together.

A small group of volunteers operate the Good Neighbours phone each day, this is manned from 9am ‘til 5 pm. These dedicated volunteers have had very busy days, and sorted many problems for those with worries or in need of help. A big thank you must be extended to these kind-hearted members of our group.

Some 14 volunteer bakers made cakes and delivered to all those people in the village who had called upon our help in the past year. We also delivered to sheltered housing in both Edlesborough and Eaton Bray. Over 100 deliveries were made to people’s houses.

We have a wonderful volunteer who has come forward to do the many medication deliveries each day from our local Pharmacy. He has personally taken on this task and our sincere thanks go out to him for his amazing help.

Good Neighbours want you to know that we are here during this time of crisis and much worry for us all. As a village, we can feel comfortable that we all have our wonderful community around us; our neighbours and friends have never been such a strength to us all. Keep safe and strong, we know we can get through this together.

For help, please ring our help-line: 07930987064

9.am to 5pm, Monday – Friday when a friend will answer your call.

✉ Pamela Richardson, Eaton Bray Good Neighbours



UNICORN WINDOWS LTD

UNIT 3 YOUNGS INDUSTRIAL ESTATE
STANBRIDGE ROAD, LEIGHTON BUZZARD
BEDS LU7 4QB



YOUR LOCAL HOME IMPROVERS

<ul style="list-style-type: none"> ✓ DOORS; COMPOSITE, ALI AND UPVC ✓ CONSERVATORIES ✓ ORANGARIES AND GLAZED EXTENSIONS ✓ CAT FLAPS/DOG FLAPS ✓ BI-FOLD DOORS ✓ PORCHES ✓ CLADDING ✓ REPAIRS - INCLUDING REPLACEMENT GLASS 	<ul style="list-style-type: none"> ✓ WINDOWS; UPVC AND ALUMINIUM ✓ SOLID ROOF/ROOF CONVERSIONS ✓ CONSERVATORY REFURBISHMENTS ✓ SOFFITS, FASCIAS AND GUTTERING ✓ LANTERN ROOFS AND SKYPODS ✓ FLUSH SASH WINDOWS ✓ SLIDING DOORS ✓ AND MORE..
--	---



10 YEAR WARRANTY





CONTACT US

FOR MORE INFO OR TO ARRANGE YOUR FREE, NO OBLIGATION QUOTE

01525 854272

sales@unicornwindows.co.uk






Carpet & Upholstery Cleaning

Professional & Local
All work guaranteed

Powerful equipment extracts more water
making it quicker to dry naturally

100% Guaranteed no chemicals left in carpet
when dry therefore will not easily resoil
& perfectly safe for children & pets

Recommendations account for 90% of my work

Absolutely no hard sell

Telephone Darren for a Free Quote

DEEP-CLEAN
01525 851 811 & 07790 034818
www.deep-cleaners.co.uk
 Email: sales@deep-cleaners.co.uk

Problem Solving:

Virus & Spyware Removal
Internet & Email Assistance
Fault Diagnostics
Repairs & Upgrades
Slow Running PC's

Services:

PC & Mac Support
Wired & Wireless Networks
Data Recovery
Install & Set-up
Health Checks

On-site Visits:

Office Hours &
Evenings - by appointment

Sales:

Desktops, Laptops & Tablets
Printers & Peripherals
Software

For friendly advice call John Wallace

07968 536068 or 01525 261381

Email: john@computamation.co.uk

Web: www.computamation.co.uk

9a Lower Way, Great Brickhill, Buckinghamshire. MK17 9AG

**Computamation
Services Ltd
Established. 1999**

*"Excellent
experience.
I nearly fell
asleep whilst
having my
fillings done!
Very reassuring
- no rush.
I was made to
feel completely
at ease.
Thank you!"
- R.R*



Edlesborough Dental Practice



floss and smile
gentle dentistry



*"Without doubt
the most
competent,
gentle & lovely
dentist in the
Northern
hemisphere!
I won't see
anyone else.
Thank you
from a nervous
patient."
- M.B.*

Edlesborough Dental Practice

Telephone: 01525 223175

11 Cow lane, Edlesborough, LU62HT

www.flossandsmile.co.uk

Get the Beautiful Smile You Deserve!

EMERGENCY TEXT TO : 07590035899



The Clear Alternative
to Braces



Implants

General Family Dentistry *Crowns *Bridges *Dentures *Smile Makeovers

***Tooth Whitening *Tooth straightening *Implants *Botox**

***Hygienist *Sedation *0% Finance**



Dentist :
Dr A. Johar
GDC number : 111350

Hygienist:
Mrs Jane Showder
GDC number : 2344



For all your painting & decorating requirements
 Domestic and Commercial
 call Max for a free estimate with no obligation
maxbro@btinternet.com

Coffee Tavern



Large Hall	£6.00 per hour
Commitee Room	£3.50 per hour
Large Hall & Commitee Room	£8.00 per hour

Bookings 01525 220891

Stairlift, access ramp and free WiFi available



Moren Associates
 Technology Services

Technology Support for Home and Business

PCs, Smartphones, Tablets, Printers
 Broadband, Internet, WiFi, Email
 Security Guidance



Virus Protection & Removal
 Upgrades & Installations
 Data and System Recovery



Hardware & Software Troubleshooting
 Home & Office Network Setup & Support

01525 229695 (Edlesborough)
support@morenassociates.co.uk



EcoTech Oven & Carpet Cleaning



- Non franchise family run business
- Eco-friendly Oven & Carpet cleaning
- Fully trained & insured technicians



OVEN CLEANING FROM £45
CARPET & UPHOLSTERY FROM £60

Call for a free quotation



01525 221922



www.ecotechovenandcarpetcleaning.co.uk

Find us on



Checkatrade.com
Where reputation matters

Dominic Woolcott Painter & Decorator



- Internal & External
- Plastering & Coving
- Insurance Work
- 20 Years Experience
- Competitive Rates

**For a professional job call:
01525 229682 or 07747 042879**

P. DYER ELECTRICAL

For all your Electrical & Testing & Inspection needs

- Re-wires
- Testing & Inspection
- Security Systems/Lighting
- LED & Low Energy Lighting
- CCTV Systems
- PAT Testing
- Fuse Boards
- Fault Finding/Repairs

Fully insured, Part P registered, all work guaranteed.
Fast, friendly, reliable, local electrician. For a free,
no-obligation estimate, call Paul on:



Tel: 01525 222109
Mobile: 07850 682815



Lee Hutt 25 YEARS
Heating & Plumbing Services

Bathrooms
DESIGN & INSTALLATION

TILING

HEATING

TAPS

Leaks

CALL OUTS

Free Estimates

01525 222145 07971 559185

Barry Cato Motor Repairs

Est. 1981

Servicing, repairs and MOT's arranged

Workshop at:

r/o Norfolk House Farm, Harling Road
Eaton Bray, Dunstable, Beds, LU6 1QY

Tel: 01525 221681 (workshop)
07836 650015 (mobile)

David John Harris



(Established 1992)

All Fencing Work • All Gates • Paving • Patios
Driveways • Shingle • Hedge Setting and Cutting
Grass Cutting • Turfing Specialist • Exterior
Painting Service • Sheds Small Building Work
Trees & Shrubs Supplied

Tel/Fax: 01525 221745
Mobile: 07889 143713



Steve the Mower Man

Steve Johns
 All mowers and garden machinery
 repaired and serviced
 Collection and delivery available
07720 828166

Will Kimberley
Garden Services
01442 255784

Phone for a free no obligation written estimate
wkgardenservices@btconnect.com

- High hedges a speciality
- Fences erected and repaired
- General garden tidy up's
- In fact any job in the garden!

GRASS ROOTS
GARDEN MAINTENANCE

TREE SURGERY, HEDGE PRUNING,
 SELECTION SUPPLY AND PLANTING OF
 TREES, SHRUBS AND HEDGES.
 REGULAR MAINTENANCE/ONE-OFF JOBS
 (Fully Insured)
Brian McMahon NCH (Arb)
01525 221960

S M Reilly & Son Ltd
General Builders & Contractors



**Turning Your House into
 a Home Since 1987**

All aspects of the building trade undertaken

- *Extensions*Hard Landscaping*
- *Windows, Doors & Conservatories*
- *Fitting of Aluminium Bi-fold Doors*
- *Kitchen & Bathrooms*Drives*
- *Loft Conversions*

01525 221740 07970 637511

Flicks & Bangs
 HAIR SALON

A warm, friendly salon offering a
 wide range of bespoke hair services
 for all the family. Feel free to pop in
 for a complimentary consultation.

www.flicksandbangs.com

Flicks & Bangs
 66 High Street
 Eaton Bray
 Nr. Dunstable
 Beds LU6 2DP
01525 221252

Opening Hours

Mon	Closed
Tue	9 am - 5 pm
Wed	9 am - 5 pm
Thu	9 am - 8 pm
Fri	9 am - 6 pm
Sat	8 am - 4 pm
Sun	Closed





01525
851080

.CO.UK

07973
167779

SIGNS

VEHICLE SIGNS

BOARDS & BANNERS

STICKERS

BUSINESS CARDS

PRINTED & EMBROIDERED

CLOTHING So Much More...

12 HARMILL IND EST LEIGHTON BUZZARD LU74FF

www.pinstripes1995.co.uk

Join us on Facebook – PINSTripES 1995

WASHING MACHINE REPAIRS

ALSO
DISHWASHERS, TUMBLE DRIERS,
AND ELECTRIC COOKERS



Call

ANDERSON D.R.S.

01582 665764

www.andersondrs.co.uk

SALES AND RENTALS AVAILABLE

Established over 20 Years

DUNCAN TOMBLIN

TREE SURGEON

Forestry Contractor • Tree Felling

Crown Reduction & Thinnings

Deadwooding • Hedge Cutting

Stump Grinding • Site Clearance

Private Agriculture Fencing Contractor

Chipper & Stump Grinding Hire

Digger Hire

FULL PUBLIC LIABILITY INSURANCE

FREE ESTIMATES

'The Best Choice For Your Tree'

TEL: (01525) 221946

MOBILE: (07802) 410728

12 Greenways, Eaton Bray, Beds



Patricia's Cuisine

Catering For All Occasions

- Buffets, Dinners •
- Christenings, Weddings, Funerals •
- Promotions & Business Lunches •

For Enquiries & Menu

Meadside Farm, 104 High Street,
Eaton Bray, Bedfordshire, LU6 2DP

Telephone: 01525 222174

www.patriciascuisine.co.uk

alto window cleaning

For a professional service.....

- Window cleaning
- Conservatory cleaning
- Fascia & gutter cleaning

07876 594186

“A wonderful
place to be!”



Eaton Bray Academy

Eaton Bray Academy is a friendly village primary school which caters for children aged 4 - 11 years of all abilities. Our Nursery provides education for children from the term after they are two.

Ofsted

Good
Provider



© Photography by Carrie



Tel: 01525 220468

Email: admin@eba.ec

www.eatonbrayacademy.co.uk

Smart[®] AUTOMOTIVE



EXPERTISE, QUALITY & EXPERIENCE
EST 2003

Car Bodyshop, Service Workshop & MOT Bay



MOT TESTING
FOR ALL MAKES & MODELS

4 WHEEL ALIGNMENT
& TYRE FITTING

SPECIALISTS IN COMPLETE
CLASSIC CAR RESTORATION

DEALER TRAINED TECHNICIANS

EXTENSIVE EXPERIENCE IN
PRESTIGE CAR PAINTWORK & REPAIR

ACCIDENT & VANDALISM DAMAGE

INSURANCE WORK UNDERTAKEN

MOBILE BODY REPAIRS
ALLOY WHEELS - DENTS - BUMPERS
CHIPS - SCRATCHES - SCUFFS

Fully equipped vans that come
to your home or office

FREE COLLECTION & DELIVERY
LOAN CARS AVAILABLE



01582 664772 www.smartautomotive.co

Smart Automotive, Units 17 & 18 Icknield Way Farm, Tring Road, Eaton Bray LU6 2JX

SMART AUTOMOTIVE IS THE TRADING NAME OF SMART TOUCH (MK) LIMITED



Litter Picking in the Villages

Well! You really have to feel sorry for the litter louts, don't you! Not only have they closed McDonald's where they find most of their ammunition, but they are now confined to home, and have to make do with putting their rubbish in their bins. You wonder whether they go into their gardens and scatter it around in frustration, but more likely, they save it up and go out to dump it in the dark....

We have had to call a halt to the formal litter picking in the Villages due to the Coronavirus lockdown, but many of our intrepid band are using their daily walk to collect litter as they go so things should not be too bad when we finally emerge. The Great British Spring Clean, which was due to be held in early April was postponed until the Autumn. I will keep you posted once we come out of lockdown.

In the meantime, thank you to everyone who has been helping this year, both by helping to keep the verges clear or clearing the pavements around their homes. It all helps to make a difference.

✉ Lorna Cabbage

lornacabbage@btinternet.com



Eaton Bray Bloomers



Have you ever wondered who keeps the flowers growing in the various tubs and beds through the village? Or perhaps you have seen a woman or two pottering over them with trowel and compost etc? Well it is all done by the Eaton Bray Bloomers-Christina, Judy, Maggie, Gillian, Jackie,

Beryl, Barbara and Jenny plus honorary members Bob and John.

My introduction to this group came a year or two after I moved to the village.

I had decided to start a bit of guerrilla gardening on the verges near Knights Close and Eaton Park by planting drifts of daffodils in what was obviously not my land. Some while after I got a knock on the door and one of the parish councillors asked me if I would keep my planting to designated beds if he put some in. Of course I agreed and now look after a rectangular bed and two tubs.

The group all work on a volunteer basis and the parish council fund the plants. So next time you see us working or watering do say hello or give wave, from two metres distance of course!





We are expanding! We have a fantastic new building and have spaces in classes up to Year 3. From September 2020 we will have children up to Year 4, then up to Year 5 in 2021 and Year 6 in 2022. This is a very exciting time for our small, nurturing village school with high expectations.

It really has been the best possible start he could have hoped for.

Parent of Reception child

Every day is a treat here!

Year 3 pupil

Please contact the school office if you would like to come and visit our school.

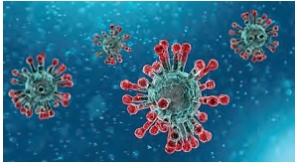
Dagnall C of E
Main Road South
HP4 1QX

Tel: 01442 842473

office@dagnall.bucks.sch.uk

www.dagnall.bucks.sch.uk

Coronavirus (Covid-19) Pandemic



Edlesborough Parish Council wishes to thank all the parishioners who are

practising Social Distancing and those who are stepping up to help their friends and neighbours during this difficult time.

The Council also thanks all those parishioners involved in the Eaton Bray Good Neighbours Scheme and the St Marys Church Pastoral Team. Additionally, the Council thanks the team of volunteers coordinated by Cllr Mrs Trish Owen who are looking after the residents of Dagnall.

The Council is using its website and Facebook page to share important information about the pandemic and precautions parishioners should be taking.

Some of the precautions taken by the Council following government and County Council advice include:

- Closing the play area and taping off the children's roundabout on Edlesborough Green.
- Attaching notices to all the benches on the Green with the aim of discouraging social gatherings.
- Temporarily closing Edlesborough Cemetery with the exception of funerals (these will need to adhere to strict Government guidelines).
- Temporarily closing Edlesborough Memorial Hall and providing all its affected hirers with full refunds.
- Providing guidance to all allotment holders with regard to safety at the allotments during the pandemic.

The Council asks that all parishioners continue to follow the Government guidelines.

Buckinghamshire Council



On the 1st April your council changed. The new Buckinghamshire Council replaced all five of the district and county councils in Buckinghamshire, and over the coming weeks and months you'll start to see some changes as you come across the new look council.

What does the new council mean for me?

- **The same services, better together.**
For most people there will be no change to the day-to-day services you use. This includes bin collections, looking after our elderly and young people, libraries and parking. The focus for the future will be on improving these services as a new council together.
- **One council.** Getting in touch with the council will be simpler because you'll only need to contact one council for all the services currently provided by the county and district councils.
- **Face-to-face advice, support and information** from your council through a network of 17 local Council Access Points based at the heart of your local community – in current council offices and libraries across the county. The five council offices in Aylesbury (Walton Street and The Gateway), High Wycombe, Amersham and Denham will be 'access plus' points, geared up to handle more complex enquiries.
- **Stronger links with local communities.** Buckinghamshire Council councillors

will work closely with local people and community organisations to understand and respond to the key issues affecting their local area through 16 Community Boards.

The new council website is <https://www.buckinghamshire.gov.uk/>



Grass & Hedge Cutting in the Villages

Now that the spring time has arrived the cutting of the grass verges has resumed. EPC requests that parishioners do not park on the grass verges as this causes damage to them and inconveniences the contractors.

EPC asks all parishioners whose hedges border the pavements to ensure that their hedges are kept well-trimmed ensuring that the maximum pavement width is available for pedestrians, pushchair and wheelchair users.

EdleFest 2020

Unfortunately, EdleFest 2020 has been cancelled due to Covid-19 all tickets sales have been refunded. The team have managed to secure many of the acts for EdleFest 2021, June 11th and 12th.

Allotments

All tenants have been issued with guidelines to follow in light of the Covid-19 pandemic.

EPC currently has plots available at the Dagnall site. Anyone wishing to take on an allotment should contact the Clerk for more information. Fees are £2 per pole and plots range in size from 5 – 10 poles.

New Pavilion

At the March Council meeting Cllrs agreed to the following Resolution:

Edlesborough Parish Council will make a loan application, at interest rates available to local councils, to the Public Works Loan Board for £175,000 to complete phases three and four of the New Pavilion on Edlesborough Green.

- The loan will be over a 30 year period.
- Repayments will be in the order of £8,480 per

annum for principal and interest. Repayments will be made from the Special Projects fund currently in place. It is planned that the loan will be repaid when the S106 monies from two of the remaining three S106 sites, in our Neighbourhood Plan, becomes available.

- There is no effect on the Parish Precept which will not be increased to meet loan repayments. Work on the new Pavilion has temporarily ceased due to contractors self-isolating and the difficulty in obtaining building materials at present.

Streetlights

Please report failed streetlights in Edlesborough, Dagnall and Northall to the Clerk for repair.

When making a report please ensure you provide the Clerk with the information displayed on the lamp post.

EPC Meetings

EPC will continue to hold their monthly meetings throughout the Covid-19 pandemic however these will be held via the social meeting platform Zoom. Any parishioner wishing to observe the meeting or speak during the Open Forum should contact the Clerk for the meeting access information.

The next Edlesborough Parish Council Meetings will take place as follows:

- Edlesborough Memorial Hall, Thursday 21st May 2020
This evening will include the Annual Meeting of the Parish Council and will be followed by the Ordinary Parish Council Meeting.
- Edlesborough Memorial Hall, Thursday 18th June 2020

The meetings will commence at 7:30pm.

All Parishioners are welcome to attend all Ordinary Parish Council meetings and may ask questions, raise issues and give suggestions during the Open Forum before the formal start of the meeting. The full minutes of the Parish Council meetings are available to view on the website or from the Parish Clerk.

Edlesborough Parish Council Contact Information:

Clerk: Miss Penny Pataky *Office hours Mon – Fri 11am – 3pm (Excl. Wed)*

Email: clerk@edlesborough-pc.gov.uk 01525 229358 Website: www.edlesborough-pc.gov.uk

Facebook: www.facebook.com/EDANParishCouncil

Jean Jaggs

Graham, David and Rachel would like to thank all who sent their condolences following the passing of Jean Jaggs on the 18th April after a short illness.

Jean lived in Eaton Bray for 20 years and participated in a number of village events.

Special thanks go to the Luton and Dunstable Hospital and the St Francis Hospice, Berkhamsted.

Pizza Baked Potatoes

By Katy Greenwood

Recipe from Good Food magazine, March 2014 and BBC Good Food Website
<https://www.bbcgoodfood.com/recipes/pizza-baked-potato>

Prep: 5 mins

Cook: 1 hr, 45 mins

Serves 4

This budget-friendly supper combines two favourites in one dish. Top your jacket spuds with cheese, tomato, pepperoni and basil

Ingredients

4 baking potatoes

1 tbsp olive oil

½ red onion, finely chopped

1 garlic clove, crushed

60g pack sliced pepperoni, torn

400g can chopped tomato

½ small pack basil leaves, shredded

100g grated mozzarella

Method

Heat oven to 200C/180C fan/gas 6. Scrub the potatoes and dry well, then prick several times with a fork. Bake directly on the oven shelf for 1-1½ hrs, until they feel soft. If you are short of time, prick each potato with a fork, wrap in a sheet of kitchen paper and microwave on High for 8-10 mins until soft inside.

While the potatoes cook, heat the oil in a small pan and sauté the onion for 5 mins to soften. Stir in the garlic and pepperoni, and cook for 1-2 mins, then add the chopped tomatoes. Bring to the boil, then simmer for 5 mins. Season and stir in half the basil. Spoon over the split potatoes and top each one with a good handful of cheese and the rest of the basil.



Cubs Do Their Best During Lockdown

On Monday 16th March we held our usual Cubs meeting at the Scout Hut in Edlesborough but suspected that it would be our last meeting for some time because the Government had just that afternoon announced measures to protect against Covid-19 by discouraging social gatherings. Sure enough, the Scout Association issued instructions that evening for all Scout Groups to stop holding meetings until further notice. I'm sure the Cubs were disappointed to be finishing early for Easter, if only because they would be missing out on the Easter Egg Hunt planned for the final meeting of term!

So how would Cubs continue if we couldn't get together for meetings? The solution was for Cubs to work independently towards the Community Impact Badge, where the aim is for Cubs to make a difference in a community by helping other people, to try to make the world a better place. This is all very much part of the Scouting ethos as Cubs promise to "do my best" and "help other people".

The Government had also advised those most vulnerable to Covid-19 (those over 70 and those with certain health conditions) to self-isolate at home for 12 weeks from Sunday 22nd March. Cubs were asked to imagine how lonely, isolated and sad those people might feel if they had to stay at home, without visitors, for 12 weeks. We suggested that they should ask their parents to help them select a neighbour who was self-isolating that they could write letters to or draw pictures for during the isolation period. Cubs were encouraged to make Easter cards for their chosen neighbour too. Hopefully the recipients will feel less lonely when they read their letters.



Of course, within a week the schools were closed and we were all in lockdown so the



Cubs no longer needed to use their imagination to understand what self-isolation was like!

When home-schooling took a break for the Easter Holiday, we sent the Cubs a list of suitable badges to work towards at home. These included Animal Carer (for those with pets) and Home Help, DIY and Gardener so that they would be able to help their parents with jobs around the home.

Scouts have trialled holding virtual online meetings. Our next task is to adapt our programme for the summer term so that we can also use virtual meetings. As we usually do lots of outdoor activities such as fire-lighting, shelter building, tracking and navigating this could prove quite challenging!

✉ Liz Coates, Cub Scout Leader, 1st Eaton Bray & Edlesborough Scout Group

EDLESBOROUGH SURGERY

11 Cow Lane Edlesborough

Enquiries - 01525 221630 Appointments - 01525 220333

www.edlesboroughsurgery.co.uk

**Dr Heather White, Dr Lee Mitchell,
Dr Stephanie Johnston, Dr Kirsten Riemer & Dr Shiv Koria**

**Friendly village Practice offering a wide range of health services including
coils/implants, minor surgery, travel advice, in-house blood tests at
surgery, on-line appointments and repeat prescription ordering.**

**Nurse Practitioners offering acute clinics with same day appointments.
Also Midwife. Local District Nurse service. Long established training
Practice with a rotation of qualified doctors.**

EDLESBOROUGH PHARMACY

01525 223181

Pharmacist - Mitul Patel



**Friendly reliable professional service at the pharmacy
and well-established delivery service to the villages.
Professional advice always available.**

**All doctors/dentists/veterinary/hospital prescriptions dispensed.
Herbal/Homeopathic products available. In addition we supply Disability
aids, e.g. Wheelchairs, Incontinence aids, Ostomy/Colostomy products,
Malaria Prophylaxis, Private Flu Vaccinations**

We are happy to order any products you may require.

Instant PASSPORT/ID Photos available

***** New for Everyone with Dunstable Doctors *****

**Patients of Kirby Road, West Street, Kingsbury Court, Priory
Gardens, Eastgate Surgery**

**Sign up now to have your prescriptions sent electronically to
Edlesborough Pharmacy. Collect your medication from us, no car park
charges and a well stocked pharmacy.**

**We have a free weekly delivery service for the housebound, elderly and
for those unable to collect from the pharmacy.**

email mitul.patel5@nhs.net/Tel 01525 223181 for sign-up forms

ASPECT

YOUR LOCAL ELECTRICIAN
TOTTERNHOE
OVER 20 YEARS EXPERIENCE

ELECTRICAL

CONSUMER UNIT UPGRADES (FUSE BOARDS)
LIGHTING - INTERIOR, EXTERIOR & SECURITY
REWIRING
NEW INSTALLATIONS
TESTING & INSPECTION

ALL WORKS TO CURRENT WIRING & BUILDING REGULATIONS
PART P CERTIFICATED & FULLY INSURED



CALL STEVE ON
07976 283969 / 01582 665068
aspect@sparky.me



CHIROPODY HOME VISITING PRACTICE

Julia Reading, BSc(Hons)

17 years experience

- * Corns * Hard skin * Verrucae
- * Thickened/Ingrowing nails
- * Nail cutting * Diabetic feet

Please telephone: 0774 647 2781

for more information or to make
an appointment

The COLLEGE
of PODIATRY

hcpc
registered
www.hcpc-uk.org



Anne Johnson Osteopath
6 Moor End, Eaton Bray

Back, neck and joint pain

Postural tension and headaches

Arthritic and other muscle and joint problems

01525 221958 / 07957 250682

Book by phone or online

www.anne-johnson.net

R.J.O'CONNELL BUILDING SERVICES

EXTENSIONS, PATIOS,
DRIVEWAYS, ROOF REPAIRS
AND PROFESSIONAL
DECORATING SERVICE

TEL: 01296 681323

MOB: 07855 236726



JAMES FALCON-CROSS LANDSCAPING AND OUTDOOR LIVING DESIGN

ALL ASPECTS OF LANDSCAPING
UNDERTAKEN INCLUDING
FENCING, TURFING AND PATIOS
TIMBER STRUCTURES
DESIGNED AND BUILT

VEGETABLE AND HERB GARDENS

01442 843258 / 07769 901325

ONECROSSFALCON@GMAIL.COM



Giblin

The Village
Property Experts

If you are thinking of moving, or are curious about
the value of your property, then call
The Village Property Experts.



Giblin Property • 4a Wallace Drive • Eaton Bray • Bedfordshire • LU6 2DF

01525 220605

info@giblinproperty.co.uk • www.giblinproperty.co.uk • lettings@giblinproperty.co.uk

N.D.S.

Neil Scott
General Building & Plumbing
(30 years experience)

- Extensions • Patios • Fencing
- Property Maintenance • Roofing
- UPVC guttering, soffits & fascia boards
- Kitchens & Bathrooms fitted

Can also

Replace steamed up/misty double glazing

Tel: 01525 221470
Mobile: 07946 626564

FREE ESTIMATES

•••

ALL WORK CONSIDERED

NO JOB TOO SMALL

For a top quality
decorating job call

Marc Flack

01442 842639 (Dagnall)

Trading locally for over 15 years
References are available.

Misty Double Glazing?

Over 30
Years
experience.
FREE
Quotes

Over 30
Years
experience.
FREE
Quotes

**KEEP YOUR WINDOW FRAMES...
... WE JUST REPLACE THE GLASS!**

- UPVC • Aluminium • Or Wood

Because we replace just the glass the repair is a
Fraction of the cost of a complete replacement window.

BEFORE



AFTER



mistydoubleglazing.co.uk
QUALITY GLAZING SERVICES

01525 876808

WE ALSO REPLACE BROKEN...

- Glass • Handles • Hinges & Locks
- AND REPAIR...Patio Doors & Conservatories!**



**Café
masala**

Exquisite Indian Cuisine

We Cater for Office or Private Parties and don't
forget to try our Sunday Buffet

10% Discount on all Takeaway Orders Over £12

Fully Licensed & Air Conditioned

Open Seven Days a Week

Hours: 12 Noon to 2.30pm & 6.00pm to 11.30pm

Tel: 01525 22 22 64

63 Bower Lane · Eaton Bray · Dunstable · Beds · LU6 1RB
email: tarque@hotmail.co.uk · www.cafemasala.com



M J Security Systems Limited

www.mjsecurity.co.uk

01582 665022

Intruder Alarms CCTV Door Entry/Access

- Est. for 35 years and NSI Gold Accredited Installer since 1987
- Bespoke systems for commercial and domestic properties
- Free site surveys and quotations
- Takeover/removal/upgrade of existing equipment
- 24 hour/365 day engineer access
- Non contract engineer call out



Absolutely Plastered

**DOMESTIC/COMMERCIAL,
CLEAN AND RELIABLE SERVICE,
FREE ESTIMATES, FRIENDLY ADVICE**



- * Plastering & Coving
- * Floor Screeding
- * Pebbledashing & Rendering
- * Dry Lining
- * Cornices & Mouldings
- * Insurance Work Undertaken

CALL NICK CONWAY ON

Mobile: 07751 830716

Tel: 01296 688981

6 Cotes Way, Wing, LU7 0RB

ARC Contract Services Ltd

- Painting & Decorating ● Plastering
 - Wall & Floor Tiling ● Door Hanging
 - Bathroom & Kitchen Installations
- 20 years experience

All work guaranteed and fully insured

Call Adrian : 01582 539179

Mobile : 07789730580

CHARLES HILL

GARDEN SERVICES LTD
DESIGN | BUILD | MAINTAIN

LANDSCAPE CONTRACTORS
NCH Horticulture City & Guilds Garden Design

A professional company working with all your garden requirements from design to complete landscape.

07773 723236

www.charleshillgardenservices.co.uk

www.alleyearroundbbq.co.uk

Gas Boiler Servicing

Over 40 years experience

Have your boiler serviced by a **Gas Safe**
and **CORGI** registered engineer

Other services available:

Maintenance, repair and installation of all domestic gas appliances including LPG. Boiler installations, Landlord Safety Certificates and Power flushing.

Free Quotes, no call out fee, and free friendly advice on all of the above.

Edwards Gas & Heating Services

Eaton Bray

Tel 01525 220626

www.edwardsgasandheating.co.uk

stevethegas123@gmail.com



ILLUSTRIA

Kennels & Kathotel

Offering your pet a fully licensed Dog
and Cat boarding service.

Purpose built Dog kennels

Individual Cat chalets with outdoor
exercise runs

All in pleasant country surroundings

01582 ~ 665343



ILLUSTRIA
Springfield Road
Wellhead
NR Dunstable Beds
LU6 2JT



Proprietors

Mick, Denise and Michele Garrod



Live a healthy & active life

Free 10 minute advice chats with
our Chartered Physiotherapists
& HCPC Registered Podiatrists

PHYSIOTHERAPY
PODIATRY &
CHIROPODY
PILATES
ACUPUNCTURE
SPORTS INJURIES
MASSAGE
WOMEN'S HEALTH
& PREGNANCY
CARE

St. Judes
physiotherapy, health and well being

01525
377751
enquiries@stjudesclinic.com
www.stjudesclinic.com



TIME TO MOVE?

**Don't be alarmed,
we're here to help!**

Established in 1999

e: info@plummproperty.co.uk

Five Good Reasons to use **Plumm Property**

Private Offices - direct savings to you on fees

Local Knowledge - from our highly experienced team

Unrestrictive contracts - no lengthy tie-in periods

Marketing to outside area - attracting London buyers

Managing all your needs with a 1st class professional service

From Offer through to Completion of Sale



01296 660230

www.plummproperty.co.uk



Stephen D. Janes

(Established in 1982)

**CARPENTRY, JOINERY
KITCHENS FITTED
PROPERTY MAINTENANCE
TELEPHONE: 01525 220649**

G & J Groundwork & Landscapes

Block Paving * Patios * Driveways
Clearance * Paths * Shingle * Slabs
Artificial Grass * Fencing
Free estimates

Garry

01582 477568 07949 118011

Neil Hodson Associates

*BUILDING DESIGN
STRUCTURAL ENGINEERING*

**PROFESSIONAL BUILDING DESIGN,
ADVISORY AND DRAWING SERVICES**

From plans for domestic extensions to multi-storey offices, commercial buildings and factories.

Structural surveys, site surveying, advice on building defects and Feasibility Studies

Planning Applications and Building Regulation Consents obtained.

**24 HIGH ST TRING
Tel 01442 890894 OR
Edlesborough 222462**



Moren Associates
Publishing Services

Desktop Publishing

Presentations

**Books, Leaflets Brochures
Magazines, Adverts
Design & Layout
Self Publishing**

Digitising

**Scanning of Photos &
Documents, Slides & Videos
Archiving, Photo Repairs**

**Domain Name, Email
Address &
Web Site Hosting**

01525 229695

enquiries@morenassociates.co.uk

www.morenassociates.co.uk

D Scott and Sons

Home Services Limited



**Plumbing, Heating
& Drains Specialists**

- Boiler repair**
- Boiler installations**
- Powerflushing**
- Annual servicing**
- Landlords certificate**
- Magnetic system filters**
- Radiator valves**
- Oil central heating**

Other services...

We offer a full range of plumbing services including full bathroom refits, showers, sinks, taps, traps & drainage and kitchen appliance installations.

Drainage - including repairs, camera surveys & drain jetting.

www.dscottandsons.net



**contact us now on
01525 791563
07921 670437**





EDLESBOROUGH TENNIS CLUB

Come and play tennis with us at our friendly club on The Green

- High quality floodlight courts with easy booking system
- Coaching available for adults and children from our LTA coach
- Weekly club nights, with balls and floodlights provided

Contact us at: enquiries@etctennis.org or visit us at: www.etctennis.org

Appledown Rescue and Rehoming Kennels

We are here for them. Will you be there for us?



This would normally be one of our busiest times of the year for rehoming, but of course during the lockdown period we are closed to visitors and will not be rehoming any dogs. We are also unable to run our usual fund-raising events. Our amazing staff will carry on giving the dogs the love and top quality care they need, but it will be a worryingly expensive time with dogs staying much longer than we would normally expect. So we need to turn to you for help at this challenging time. To make a quick and easy donation of £3 simply text APPLE to 70111 or donate via Paypal using the 'DONATE Support a Cause' option and search Appledown Rescue. Donations by cheque are very welcome too. Thank you from all our dogs!

Appledown Rescue and Rehoming Kennels, Harling Road, Eaton Bray LU6 1QY
01525 220383 appledown.kennels@btinternet.com (Reg. Charity No. 1116848)

The 5th Generation Family Business, on your door step A Family History of J A N E S

You may often wonder how on earth does a small family business selling appliances, televisions and carpets end up in the middle of the village of Edlesborough?

1888 - After more than two centuries of farming and farrier background Ezra Janes broke away from the village based family tradition and began making shoes for people instead of horses. Three years after operating his business from a cottage, Ezra decided that he would build a house and a shop. Firstly he negotiated the purchase of a property round the green, only to find that he had bought it from a man who didn't even own it and so lost his deposit. In **1891** the original eight room building was erected which now forms the main part of Janes. To make way for his new edifice, 'Glass Bottle Row' had to be demolished. This consisted of thirteen cottages, which adjoined Broomstick Cottage (behind 8 High Street) and the newsagents and housed over one hundred people. There was an open stream running along the front, which is now in a brick culvert under the pavement and also until recently marked the Beds/Bucks border. Ezra did rounds in Dagnall, Ringshall and Little Gaddesden collecting shoe orders and repairs.

Meanwhile Erza continued as a Deacon for Edlesborough Baptist Chapel and as Clerk to Edlesborough Parish Council, retiring after 36 years. His first official



Ezra Janes



appointment came in 1894 when he was appointed Assessor and Collector of Taxes.

1918 - Charles Janes, Ezras son, returned from service in the First World War to become involved in the business and after he married Ethel in **1921** moved into the shop. Charles introduced the hire and recharge of accumulator batteries for wirelesses, from that he went on to sell radios

and cycles.

1941 - When Philip, Ezra's Grandson, finished school at the Cedars in Leighton Buzzard he began to get involved in the business but on being called up for service in **1943** Charles had to hold fort until war was once again over.

1948 - Philip moved into the shop with his new wife Mary and remained there for 20 years. Throughout



Philip Charles Janes 1935



this period with the help of his brother, Don, the business grew and with the demise of shoe making and repairing, the shoe retail side grew, along with the addition of electrical appliances such as kettles, irons, wash boilers and spin driers etc. By now the business had been separated into two shops with the shoe shop

and the cycle/electrical shop standing next to one another in the High Street.

1970 - During the seventies Martin and Peter, Ezras Great grandchildren, became involved in the business and in **1976** the house was converted into extended shop premises. Carpet sales were also now becoming a more significant part of the business.

1994 - One hundred and three years of local history came to an end when Martin



Janes in 1955



Louise Janes 1976



and Peter closed the shoe shop doors for the last time. Whilst the cycle, electrical and carpet side of the business was very much alive they saw that, with the current trend in shopping habits, it was prudent to finish the shoe business and concentrate on the other areas of trading.

2004 - The shop at No. 8 High Street became vacant and the decision was taken to open up through the present store and fit it as the carpet showroom. Martin's daughter Louise came to manage the new store and the business has seen a real growth in this area of the company's trading.

2005 – to present day 2020 Andrew & Louise Janes the brother and sister team, Ezra's Great, Great Grandchildren continue to strive to achieve the same customer service



and expectations of their predecessors. Andrew has introduced a very successful Appliance Repair Service to add to the business and Louise focuses on Interior Design and Advice for the Carpets & Flooring department, visiting customers at home, ensuring a smooth transition from start to finish with her fantastic team of fitters.

Retail has always had its challenges and our business is no exception, from the financial Crash of the 1930's, Rationing in the wars, Power Strikes in the 1970's, slumps in the 1980's, then the rise of large companies and internet businesses destroying the high streets, it's been tough for each generation.

JANES and the team have remained steadfast in our customer approach, always putting our customers first, going the extra mile when all else would fail.

We believe this what keeps us going, returning customers, great experiences and word of mouth.

But Most of all... we love what we do...!

Andy - Louise - Marcus - Tracy - Charlie



Andy & Louise





Dagnall Community Choir

The choir had so many plans for 2020 – our tenth anniversary year – music festivals, concerts, a quiz night, an evening hosting a choir from Norway... As with everything else due to take place this year, all our events have been postponed, and our rehearsals are suspended until further notice.

We were able to attend the Bedford Music Festival, at the beginning of March, before any restrictions on movement and social gatherings were introduced. This took place at the Bedford Corn Exchange, which is a wonderful and historic venue, that has hosted some big names over the years.

This was the first time we had entered the Bedford Music Festival, so it was a bit daunting for the choir when we realised we were the first on the bill in our section! But we performed well, earning praise from the adjudicator for Vivaldi's "Gloria" (*"a confident start, the tone is warm and clear, a secure rendition"*) and Piazzolla's "Invierno Porteno" (*"a challenging piece, tackled with gusto, most enjoyable"*) and were awarded a merit for our performance.

Meanwhile we were delighted that Parkside Singers, our friends from Ampthill, were awarded a well deserved second place in the Community Choir section. We have close links with this choir as James Banville, our accompanist, also plays for them, and their Deputy Musical Director, Helen Wingate, helps us out when needed. We were happy to see their excellent performance rewarded. Little did we know that the Monday night rehearsal following this would be the last time we would meet for the foreseeable future. The next event in our diaries was the Milton Keynes Music Festival, scheduled to take place the following weekend. The festival went ahead but Dagnall Community Choir took the (wise) decision not to attend.

Our rehearsals were then cancelled from Monday 16th March.

We all miss one another. We miss the friendship and fun of our Monday nights together. Most of all we miss singing together, and the absolute joy that brings. But thanks to social media and digital technology, we are able to keep in touch. We've created a Facebook group for choir members, where we can chat, share news, and give and receive support for one another. Some choir members have recorded themselves singing and shared that with the group – others haven't been quite so brave! Our Chairman, Stephen Holder, emails us all daily, with links to Youtube videos of different choirs singing some of our favourite arrangements, which are great to listen to - and learn from! On Mondays, Michelle Garrard, our Musical Director, sends us a list of music to rehearse at home if we so wish. It's all far from perfect of course, but in these challenging times, it helps to know that we are there for one another, and we do what we can, until we are finally able to meet again.

For more information, or to get in touch, please take a look at our website www.dagnall-community-choir.co.uk.





Eaton Bray Methodist Church

ZOOM, the new way of meeting and greeting, has given us a lifeline in this strange new world of lockdown and physical isolation. With very heavy hearts we closed our doors in March, like all other churches and places where people gather. Immediately the phone networks started humming, bringing friends and congregation members together. Like so many of the

village organisations, our first priority was to support and enable isolated people to access food, company and medication, especially older and vulnerable ones. Then one of our members, Ed Syrett, a computer expert, set up some ZOOM ‘virtual coffee mornings’ which were so welcome, allowing a number of us to see each other, chat, share experiences and ideas, exchange anecdotes and jokes.



Following the success of this, much to our delight, Ed and our Minister, Rev Nigel Bibbings, planned a short ZOOM service on Palm Sunday. We were able to share in prayers, sing a number of hymns and listen to a short, inspiring sermon. Its theme was this wonderful period of Spring, new life, birth and regeneration: as we approach Easter, walking with Christ to the Cross, we need to wait patiently, putting our trust and confidence in Him alone. He is always present with us in grief and joy and self-isolation.

St Mary’s 100 Club

The lucky prize-winners are:

March 2020

1st prize – Ken Robinson

2nd prize – Martin Day

3rd prize – John Benness

April 2020

1st prize – Patricia Quartermaine

2nd prize – Roger Wilkinson

3rd prize – Robert Feaviour

MEETING PLACE AVAILABLE

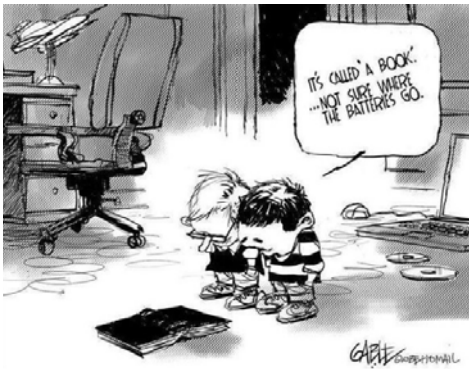
Does your leisure group/voluntary organisation need premises for your regular meetings?

Edlesborough Methodist Church, centrally located on the corner of Cow Lane opposite The Green, has accommodation that might suit your purpose.

Please contact **01525 223093** for further details.



*Cow and sheep photos
by Sally Siddons*



Ploughman's Lunches



Cakes and stalls,
Games and fun
All welcome

**Saturday
11th July**
11.30—2.00 pm
All Saints Church,

Dagnall

Supporting:

Dagnall C of E School

and

All Saints Building Fund



To brighten up our world by John Hockey





Look! It's the National Health Service,
They work hard and long,
They work all day and night,
They don't have to be big and strong.

But even in this difficult time,
They are still working strong,
And since some are stuck in quarantine,
NHS staff are working twice as long.

There are many different jobs here,
Most I cannot name,
Doctor, nurse, midwife and more,
Other countries better step up their game.

Now it is my time to go,
I have to go to sleep,
I hope you all support the NHS,
Whilst we're all stuck in this big heap!

It's very busy here in the NHS,
A lot don't get a break,
Some don't even get their dinner,
And almost always come home with a
headache.

✍️Eloise Sherwood
Age 11



EATON BRAY PARISH COUNCIL

We currently have vacancies
Please come and help run your village

BECOME A PARISH COUNCILLOR

The Parish Council is nine members of the public

If you are just the person to help make a difference and create a better
future for local residents, please contact the Parish Clerk.

We look forward to hearing from you.

Heidi Head, Parish Clerk

Email: clerk@ebpc.co.uk – Telephone/Text: 07931479663- Website: www.ebpc.co.uk
Office Hours: Tuesday/Thursday/Friday 09:30-13:30hrs [messages can be left on answerphone]

**Hippopotomonstrosesquippedaliophobia
is the fear of...**

...long words

Ideas of Things To Do in Lockdown



Learn a language
Organise your wardrobe
Update your CV
Get fit



Write a novel
Clear out your kitchen cupboards
Learn to paint or draw
Learn Photography



Learn to code
Learn to do make up
Do an online course
Host a virtual pub quiz
Start a virtual book club



Phone a friend
Get stuck in a new podcast
Clean your oven

Did out an old favourite film
Take a yoga class using online tutorials
Transform your living room into a cinema
Get out in the garden

Learn to juggle
Read

Have a virtual talent show with family and friends

Do a crossword
Do some colouring
Make a post-lockdown list



Do a jigsaw
Relax

Make a den with the kids
Paint pebbles
Write a letter
Cook something new



FOCUS VILLAGES WORDSEARCH

P T F B M Q V B O O T H P L A C E D C J A T C C U Q X
L U D O I B N W E D I S N W O T S Y E L R E M M U S R
D P A W L E N N V G R L E E P D P V D C V E M S K F P
M F O E L I H E H U E N S W R O O M E L B B E P Z M K
B H R R T E E S M I A O I A L W A T E R S I D E O K I
D K G L O M T P G L L J H C L I B Q R X R X M C U R N
S S N A W R Q H N C C C O N N R X H C E W E E H I A G
O E I N E A T O N B R A Y R O A D X S V D H F A W P S
U R R E R O T O X O I C O W W Y M R L L T V N P J N M
T U T M N P S U E B C A N T I L U P E C L O S E B O E
H T L R A K B H W X D L O D D N L Y V C R T L L J T A
E S O L C E T A G N O T A E E B C I K T P H C L B A D
N A S A K Z B K O W T O V H N L S C H O O L L A N E A
D P J C U Y F R A E R I T X O A C A C O W L A N E M O
L E I H B P T V R E R X R S R O L E I K V C D E E I R
A H A I E H E N L D M T E S O L C S T H G I N K R L L
N T H L L N H B E T D S K K R M T S T U T V U T G L L
E O N T U O A C M D W E S O L C E E R T W E Y N E E A
Z G S E E T A L T S T M A R Y S G L E B E S Z E H N N
A F F R S L W H M M E D R N C G F Y F R O K S T T D G
S I O N L F E Y D A O R N O S L E N L E T U C N A C A
C A U A X R S D D J H O R V Z M W I V E L S F I E L D
D D W V Y M O O R E N D T A S K E R S R O W K D L O Y
C I L E Q W W L W M C H U R C H L A N E O H B O Y S I
G U R N E Y C O U R T R A T C V J N D S R C C O O E M
P C H U R C H C R O F T C X S O R S N O R Y P G F R V
Y M C E S O L C S N A M S T N U H W Z D W C A E Q L B

Print off pages 46 and 47 and find the four villages' streets, listed on page 47, in the word search above

BOOTH PLACE
BOWER LANE
BROOK STREET
BROWNLOW AVENUE
CANTILUPE CLOSE
CHAPEL LANE
CHILTERN AVENUE
CHURCH CROFT
CHURCH LANE
COOKS MEADOW
COW LANE
DAGNALL ROAD
DEANS MEADOW
DUNSTABLE ROAD
EATON BRAY ROAD
EATON GATE CLOSE
EATON PARK
GOOD INTENT

GURNEY COURT
HIGH STREET
HUNTSMANS CLOSE
JACKSON CLOSE
KINGS MEAD
KNIGHTS CLOSE
LEIGHTON ROAD
MAIN ROAD NORTH
MEDLEY CLOSE
MILL END CLOSE
MILL TOWER
MOOR END
NELSON ROAD
NORTHALL ROAD
PEBBLEMOOR
SCHOOL LANE
SLAPTON LANE
SLICKETTS LANE

SOUTH END LANE
ST MARYS GLEBE
STUDHAM LANE
SUMMERLEYS
TASKERS ROW
THE COMP
THE GREEN
THE NURSERIES
THE ORCHARDS
THE PASTURES
THE RYE
TOTTERNHOE ROAD
TOWNSIDE
TRING ROAD
WALLACE DRIVE
WATERSIDE
WIVELSFIELD
YEW TREE CLOSE

**Prediction: There will
be a minor baby boom
in 9 months, and then
one day in 2033, we
shall witness the rise
of THE
QUARANTEENS.**

**THEY SAID A MASK
AND GLOVES WERE
ENOUGH TO GO TO
THE GROCERY STORE**

**THEY LIED,
EVERYBODY ELSE
HAD CLOTHES ON**

The logo for SHN (South Herefordshire News) is displayed in a bold, blue, sans-serif font. It is centered within a white rectangular box that is itself centered inside a large blue heart shape. The heart is set against a background of a blue horizontal bar that spans the width of the page.

#StayHomeNow

THE ASHRIDGE ESTATES SALE 1923

Continuing our articles on the historic sales of local property

LOT 21

(Coloured Green on Plan No. 2).

A Pair of Well-built Brick & Tiled Gabled Cottages

with Porch Entrances, being Nos. 18 & 19 in the Village of Edlesborough, each containing Five Rooms, with Detached Wash House and Wood Barns and E.C.'s, and good Gardens.

Let to the Bucks Constabulary and Hy. Gray at Rents amounting to **£17 10s. 0d.** per annum.

Outgoings.—Land Tax 5s. 0d.

LOT 22

(Coloured Blue on Plan No. 2).

A Brick and Tiled Five-Roomed Cottage

being No. 2 in the Hamlet of Northall, with Large Garden, **No. Pt. 354** on Ordnance Survey, and containing about

·320 Acre.

Let to Ephraim Howard at **£6 15s. 0d.** per annum.

Outgoings.— £ s. d.

LOT 23

(Coloured Blue on Plan No. 1).

A Compact Small Holding

In the Hamlet of Northall,

comprising a Brick and Tiled **DOUBLE COTTAGE** containing Ten Rooms, with small Garden, detached Brick and Tiled Barn, Harness Room and Stable for 3, detached Timber and Corrugated Barn, being **Nos. 351 and 398** on Ordnance Survey, and containing altogether about

2·607 Acres.

Let to Mr. James Cheshire on a Yearly Michaelmas Tenancy at the Apportioned Rent of **£17 10s. 0d.** per annum.

Outgoings.—Tithe £ s. d.

LOT 24

(Coloured Blue on Plan No. 2).

Three Brick and Tiled Cottages

Two containing Five Rooms each, and the other four, with Detached Barn and E.C.'s and Gardens back and front, being Nos. 12, 13 and 14 in the Hamlet of Northall.

Let to Messrs. Cook, J. Ruffett and W. Tibbitt, at Rents totalling **£15 4s. 0d.** per annum.

Outgoings.—**LOT 25**

(Coloured Pink on Plan No. 2).

A Brick and Slated Four-Roomed Cottage

with Garden and Wood Barn adjoining, being No. 19 in the Hamlet of Northall.

In the occupation of Mrs. Charles Cook, on a Yearly Tenancy at **£9 0s. 0d.** per annum.

LOT 26

(Coloured Blue on Plan No. 2).

A Pair of Brick and Tiled Five-Roomed Cottages

with Detached Barns, and E.C.s and Gardens Back and Front, being Nos. 17 & 18 in the Hamlet of Northall.

Let to John Gurney and Wm. Smallbones at **£6 15s. 0d.** each Yearly.

Outgoings.—**LOT 27**

(Coloured Pink on Plan No. 2).

A Small Enclosure of Garden Ground

in the Hamlet of Northall, being **No. Pt. 353** on Ordnance Survey, and containing about

·210 Acre.

Let to Mr. Henry Vasey on a Yearly Michaelmas Tenancy.

LOCAL HERALDRY

BY JOHN HOCKEY

In this series, we take a look around local towns and villages to find interesting and unusual heraldry.

HARPENDEN CATHOLIC CHURCH

In the Roman Catholic Church of Our Lady of Lourdes, Harpenden, there is some beautiful stained glass including a window portraying Saint John Fisher, who was executed at Tower Hill, London in 1535 after refusing to accept the King (Henry VIII) as Supreme Head of the Church of England and for upholding the Catholic Church's doctrine of papal supremacy. Prior to this he attracted the King's displeasure by being the chief supporter of Queen Catherine of Aragon when Henry tried to divorce her. In May 1535, the newly elected Pope Paul III created Fisher Cardinal Priest of San Vitale, apparently in the hope of inducing Henry to ease Fisher's treatment. The effect was precisely the reverse: Henry forbade the cardinal's hat to be brought into England, declaring that he would send his head to Rome instead.

After a decent interval, Fisher was beatified in 1886 and canonised in 1935, just 400 years after



his martyrdom. His feast day is on the 22nd of June (the date of Fisher's execution).

The coat of arms shown has the arms of the Bishop of Rochester (one of his titles) on the left or dexter side and Fisher's personal arms on the right or sinister side, the position normally reserved for a wife – clearly the bishopric takes precedence. The Saint's arms are a pun, known heraldically as canting arms as the main charge is a dolphin (a fish) and the correct blazon or description is as follows: *'Azure, a dolphin naiant* between three ears of wheat all within a bordure engrailed Or'* *naiant means swimming horizontally.

Next time: Back to basics

Make your house a home with
blinds and awnings from

**VANSAR
BLINDS**



www.vansarblinds.co.uk

Find us on Facebook



- Free No Obligation Measuring And Quotations
- All Blinds Made To Measure
- Choose In The Comfort Of Your Own Home Or Workplace
- Family Run Business
- Large Range Of Quality, Affordable Fabrics And Colours To Choose From

01525 220477 or 01582 699565 sales@vansarblinds.co.uk

JoAnn Latus School of Dance



- Ballet, Tap and Modern classes for children aged 3 and upwards
- Adult Ballet classes starting in the New Year
- Professionally trained teachers and safeguarding policies in place
- Regular exams, shows and theatre trips

Classes held in Buckinghamshire,
including Eaton Bray on Tuesday
and Friday evenings

For more information contact JoAnn Latus:
Tel: 07800 518654

Email: info@jolatusdance.co.uk

Web: [@jolatusdance](http://www.jolatusdance.co.uk)

McTimoney CHIROPRACTIC



Margie Craib BSc BHSI DC AMC MMCA
Human and Animal Treatments

Ashridge Farm, Ringshall, Berkhamsted, Herts HP4 1ND
Telephone: (01442) 842729

General Chiropractic Council Registration No. 293

Spinney Landscapes & Gardening Services

All Aspects of Grounds Maintenance
Leaf Clearance • Grass Cutting/Scarifying
Patios & Driveways • Pressure Washing
Weed Control • Tree Work & Wood Chipping
Fencing • Snow Clearing • Mini Digger Hire
Tel: 01525 839622 Mob: 07876 500292
Email: spinneylandscapes@gmail.com
www.spinneylandscapes.com



Curiosity Creativity Community

Dagnall C of E school is a nurturing and inclusive learning community, situated at the foot of the Chiltern Hills.

Ofsted 'good' (June 2018):

"A positive learning environment where pupils are exceptionally well cared for and nurtured."

SIAMS (July 2018):

"The school is outstanding at meeting the needs of all learners."

We offer a unique, family feel where children benefit from small class sizes and personalised learning.

We provide a creative environment where children feel safe to challenge themselves and to develop their love of learning.

Spaces available

To arrange a visit please call:

01442 842473

or visit: www.dagnall.bucks.sch.uk

email: office@dagnall.bucks.sch.uk



We are a nurse-led home care provider committed to delivering the very highest standards of care.

Support from our dedicated team gives you or your loved one the peace of mind and confidence to be able to continue living at home.

Family-owned and managed, we are independent and do not belong to a national chain or franchise. We are registered with the CQC, number 1-1499072841.

To talk to us about your requirements please call Helen Yates RGN on 07920887414 or 01442 843064 or email helen.yates@yourownhomecare.co.uk



www.yourownhomecare.co.uk

NG AUTOS

MAKING YOU AND YOUR CAR HAPPY

**CAM BELTS • MOT'S • MOT REPAIRS • HEAD GASKETS
AIR CONDITIONING • RECOVERY/BREAKDOWN
DIAGNOSTICS SERVICING • BRAKES • SUSPENSION
CLUTCHES • GEARBOXES • TYRES • WHEEL BALANCING
WHEEL ALIGNMENT COLLECTION & DELIVERY**

CALL NICK OR GARY

01525 220850 OR 07972 198615

**SPARROW HALL FARM, LEIGHTON ROAD,
EDLESBOROUGH LU6 2ES**



Reception



Service Bays



MOT Station



DM SECURITY

Commercial & Residential Alarm Systems

CCTV • Access control • Intruder Alarms • Locks
Electrical Installations • Fuse Boards • Re-wires

John Dorman: 07483 872017 Chris Mahoney: 07801 552113
20 Slicketts Lane, Edlesborough, Dunstable, Beds, LU6 2JD

D.A. Windows, Doors & Conservatories

Emails: dawindows@live.co.uk
mimcavinder@hotmail.com

Telephone: 01582 485443

Mobile: 07807 798387

- Installation of UPVC windows, doors and conservatories
- Composite doors and side lights – choice of design and colours
- Replacement glass units and window maintenance

QUALITY PRODUCTS

QUALITY WORKMANSHIP

QUALITY PRICES

Contact us for a quotation or to discuss your requirements

ACCREDITED MEMBER
OF THE INCORPORATION
OF PLASTIC WINDOW
FABRICATORS AND
INSTALLERS

GOVERNMENT APPROVED
CERTASS REGISTERED
CONTRACTOR REG. NO.
001634

Leighton Aerials

Established 1970

For all your aerial
and satellite needs
call Colin on

01525 374742



Edlesborough School and Pre-School



Together we achieve the extraordinary

For more information about our School, Pre-School and
Before and After School facilities,
visit our website at:

www.edlesborough.bucks.sch.uk

Ofsted
Good
Provider





The Gentleman Gardener

Let your local RHS qualified gardener make your garden beautiful, from simple garden maintenance to total redesign of your garden.

Please call Barry on
01525-222451 or
07541196384

to pop round for a free chat.



**A McClelland
Pest Control**
FOR FAST RESPONSE CALL:
Mobile 0777 494 8415
Office 01582 872158



UNMARKED VEHICLES
For further information please call or email
amcclellandpestcontrol33@gmail.com



Parties Wedding Receptions Stage Productions
Fitness Classes Business Meetings Beer Festivals
Film Shows Club Meetings Keep Fit Quiz Nights

Eaton Bray Village Hall

Capacity for 220 People Parking for 70 Cars Meeting Room Countryside Views
Bar Facilities Kitchen Facilities Full AV Facilities Baby Changing Wheelchair Access



For bookings or enquiries call: 07975 797 202
email: bookings@ebvh.co.uk

www.ebvh.co.uk



WAGGING

wonderful dog grooming

Here to take care of your mucky pup!

Your local dog grooming service in Eaton Bray

1-2-1 care for your dog

NO cages!

07580 343396

www.waggingwonderful.co.uk

info@waggingwonderful.co.uk

James B Chadburn FBHI

Fine Antique clocks & Barometers

Specialist in repairs & restorations.

Valuations & clock finding service.

Advice & assistance on formation & disposal of private clock collections.

Quality clocks/barometers Bought & sold.



Telephone 01525 221165

Mobile 07790 000629

E-mail: info@jameschadburn.com



Contact James direct on:

Mobile: 07771 698 151

Office: 01582 343 123

Email: james@andertonelectrics.co.uk



See our feedback on Check a trade

www.checkatrade.com/andertonelectrics



- ✓ Free quotations, no obligations
- ✓ Emergency Work – day or night
- ✓ Domestic or Commercial
- ✓ A name you can trust



www.andertonelectrics.co.uk



All Aspects of Pressure Washing

- Roofs Cleaned and Coated
- Block Paving Refurbished
- Driveway / Patio / Pathway Cleaning
- Building Fascia / Cladding Cleaning
- Gutter Vacuuming / Fascia & Soffit Cleaning
- Graffiti / Chewing gum removal
- Conservatory Cleaning



0800 298 5883
www.greatoutdoorscleaning.co.uk



TODDINGTON

INDEPENDENT FINANCIAL ADVICE



DO YOU NEED FINANCIAL ADVICE?

We can help you to review your current or proposed,

Mortgages, Insurances, Pensions & Investments, Equity Release, Inheritance Tax, Wills and Trusts, or a general review of your current position?

'As a mortgage is secured against your home, it may be repossessed if you do not keep up the mortgage repayments. The financial conduct authority does not regulate tax and estate planning or will planning'

Unlike some TV adverts we don't charge a fee for equity release, so no broker fees added to your loan! 'Equity released from your home will be secured against it'

LOCAL OFFICE: Toddington

Contact: Philip Hadlow
Tel/Fax: 01525 874100
Mobile 07768 277 532
info@toddingtonifa.co.uk
www.toddingtonifa.co.uk

Free Will with Investments & Pensions placed through us of over £50,000 and within 6 months of investment
Talk to us for a free initial consultation

Toddington Independent Financial Advice Ltd is authorised and regulated by the Financial Conduct Authority.
Registered office: 1 St John's Barns, Griffin Farm, Conger Lane, Toddington, Bedfordshire, LU5 6BT
Registration Number: 760687 Company Number: 9931606

EDLESBOROUGH



NEW HOME, NEW PRICE

£450,000

INCENTIVES AVAILABLE

3 BEDROOMS
EN-SUITE TO MASTER
STUDY
CARPORT

READY FOR OCCUPATION

HOUSEHOLD
estate agents
— New Homes —

Call 01582 477077
now to arrange your appointment
email dunstable@house-hold.co.uk



Eaton Bray Cricket Club

At the time of writing, 2nd April, Eaton Bray Cricket Club will have been formed for 106 years. Only the two World Wars have prevented Cricket in the village but needs must overtake all.

What follows is a brief history of the club since its move in 1981 from the Village Green to the Rye Gardens. It was penned by long time Bray stalwart Michael Jarrett for the Centenary fixture against the MCC in 2014.

Please all stay safe and hopefully soon we can all enjoy some cricket and hospitality with Eaton Bray CC in 2020.

The Recent Years started on 13th June 1981 with the first game at The Rye Gardens, the new ground. The actual start was delayed by 2 weeks as the planned start, against Edlesborough was rained-off. The first opposition was Stoke Hammond. A game which ended in defeat by 62 runs, but fittingly, two of the clubs finest cricketers, Barry Meakins and Eric Pratt took the first wicket and scored Eaton Brays first run.

Prior to playing at The Rye Gardens, the club played its home games on the Green at the end of The Rye, with the wicket placed in the centre circle of the football pitch. As the football season extended it became impossible to prepare a safe wicket and outfield in time, despite the efforts of the then President, George French and his willing team of helpers. Ken Bearton, the Chairman, and members took the decision to find an alternative ground in 1978.

A piece of land was found within the year. Prior to its conversion to a cricket ground, The Rye Gardens had been a former allotment site. The club obtained permission from its owner, the Parish Council and from the Ministry for the Environment

for the loss of this type of local amenity. However the County Council were initially less supportive and its officers suggested an alternative site on the corner of Totternhoe Rd and Stanbridge Rd . The development of the Nurserys site in the centre of the village was even mentioned as a future home of the cricket club. The club finally secured The Rye Gardens on the understanding that it could be further located when the Parish Council provided a comparable ground and facilities.

So whilst the first game was in the middle of 1981 the planning, preparation and fund raising took almost three and a half years. Indeed the fund raising continued for many years after the move. The cost of the initial very basic infrastructure amounted to £1680 yet the club only had £90.41p in 1979. Fund raising events were arranged. Grants applied for and annual subscriptions were introduced for the first time at £5 per member. The club kept costs low by doing the work themselves such as painting the pavilion and de-stoning the outfield. Drainage media to the wicket was excluded as it was considered too expensive. Builder Brian Scott was however adamant that costs should not be cut with the toilet facilities.

A year after moving to the Rye Gardens the club helped to form the Beds and Bucks Border League. This was a league of ten clubs who all played friendly fixtures. The introduction of a league sought to add further competition to the existing games. Although the club were runners up in the second season it was largely unsuccessful for the first 16 years. Captains Larry Ryan and Mick Flecknell however changed the fortunes of the club laying the foundation for seven Division 1 titles between 1998 and 2008. By 2008 the original league had increased in size and merged with another league which

evolved into the Four Counties Cricket League with six divisions. By this time the club, like many others were fielding two league teams on a Saturday.

Since 1981 the rudimentary facilities of pavilion and ground have been steadily improved. The ex Wimpy site office (Pavilion) was extended in 1989 to house three showers. For eight years the players had to rely only on the great smell of Brut!. Two sight screens, boundary rope, score box, lock up, bar and a veranda were all added through the years, as were neighbouring properties either side of the ground. The wicket and outfield have improved too with local help and support. Perhaps the most significant development of the club in recent years has been the formation of a Junior section in 2011. Since then a lot of investment has been made by the clubs coaching staff to develop and encourage juniors into playing cricket and playing for Eaton Bray Cricket Club.



♥ +
x . ♥
♥

I heard a little rumour, I don't know if it's true,
that the world is going to be at peace for at least
a month or maybe two...

I heard that the folk must stay at home and spend
time with their kin, slow down, relax, take a
breath and find some peace within
And though we may be worried about money,
jobs and bills, we will notice beauty everywhere...
Blue skies, fresh lakes, green hills
And when a month or two is over and we can all
go back to our lives, people will show gratitude
that their loved ones all survived

#StaySafe
Anon

♥ +
x . ♥
♥

shared by silversurfers.com



Northall Baptist Church

A little Church with strong local links

How the world has turned upside down but the Coronavirus has not stopped our Church. Since I wrote our last article, it feels like being in a different world. So many worries, suffering, death and unimaginable changes to our lives. We think particularly of those grieving for loved ones and those with concerns for their families both health-wise and financially.

And we do not forget the many on the front line who are helping to support us, some at cost of their own lives, from the doctors and nurses in the NHS, staff in care homes through to delivery drivers and dustmen and also the many volunteers.

Some of us may have relatives who died in the 1918 flu pandemic when around 50 million worldwide died of the virus – many in tragic circumstance because of the war. However distressing, we seem better equipped to deal with the situation and just pray that work being done on improved treatments and vaccine development come on stream to prevent such a big number of deaths.



I turned to the Psalms for some comfort as this situation is all encompassing. Psalm 7 v 1 says 'O Lord my God, I take refuge in you; save and deliver me from all who pursue me.'

The virus seems to be pursuing us all, country by country. We are all having to keep away from our family, friends and usual lives and learn how to do things differently. We have been learning how to hold our services differently. It seems that when pushed, we can change how we do things.

Even as a small church we have worked out how to see and hear our usual congregation through digital services. It is really amazing at times like this that we are now able to continue to worship together, even though we are separated in our own homes. I am amazed at the inventiveness of everyone, including our elderly members and to be reminded how much we all need each other.

We don't know how long this will be going on, but it doesn't mean that we have to give up everything we value. Keeping in touch with family, friends and our faith, although differently, is what keeps some stability in these troublesome times. When we can't remember what day of the week it is, our church service is a regular point in the week to bring things back to more normal. However the tea/coffee and shortbread afterwards is more of a challenge!

Our Sunday services, now on Zoom are at 11 am. If you come and join in the worship, music and song, you'll get a very warm welcome. Just contact us through the website (details below) for instructions on how to join us or ring the number below. If you don't have a computer with video and sound, you can still listen in and speak using a landline or mobile.

For those interested in the history of Northall Baptist Church, a free copy of the booklet, *Rebels in Green Pastures* can be supplied or downloaded from our website: <http://northallbaptistchurch.org/>

✉ Ruth Cox Tel: 07791 425625



Eaton Bray Cricket Club

Est 1914

2 senior teams
FCCL Saturdays

1 Senior team
Beds Sunday League

6 Junior teams at U9, 2xU11,
2xU13 and U15

Come and join a progressive family
club. For more information please
follow us on Facebook & Twitter
@EatonBrayCC

Enjoy your cricket with
Eaton Bray in 2020



J Able bathrooms DESIGN - SUPPLY INSTALLATION

We have suites in a wide range
of styles to suite your budget.

Please ring for a home
consultation and quote.

All building, tiling, and electrical
work included.

07891 449077

W: www.jablebathrooms.co.uk
E: ableplumbing@hotmail.co.uk

Poem by Carrie Lovell
from Focus May 1979

Beauty

The world is full of beauty
if we have eyes to see
the things of joy around us
the land, the sky, the sea,
We watch the flowers blooming
the birds and butterflies,
each tree is proudly standing
reaching upwards to the skies,
The sky which holds the treasures
of beauty greater still,
the clouds, the moon, the sunshine
our gladness to fulfil.



Adjusting to Lockdown Life

by Amanda Akien

In these unprecedented times, an extended lockdown can challenge people in different ways. Whether you are now trying to work from home, complete with the children off from school, or you are retired and missing the usual visits from family and friends, restrictions can play havoc with our thoughts and feelings.

After a period of adjustment to the new (and hopefully temporary) norm, many people have developed a new routine, from a daily walk around the villages to embarking on some arts and crafts to fill their days.

However not everyone has adjusted, and fatigue, stress, boredom, worry, loneliness and depression can easily creep into daily life. Here are some top tips to make these unusual days more meaningful.

Morning

Start the day by writing three objectives for the day. These can be as challenging or as easy as you like. Whether it is to go on a three mile walk, bake a cake or learn five words of Spanish, setting some simple tasks for the day can provide some extra motivation.

Wake up naturally. If you are not working, then try to wake up naturally without an alarm clock a couple of times a week. This will help you connect with your circadian rhythms (bodily cycles).

During the day

Take a break. If you are working from home, rest your eyes from the computer screen every 15 minutes. Allow your eyes to roam around the room and adjust to the longer distance.

Make potpourri. If you are looking for an easy craft, using the leaves of dried herbs or flower petals can make a natural potpourri. Sage, pine, rosemary, roses, lavender, lemon verbena bergamot and / or peppermint can be easy to find in the house and garden. Mix in an attractive bowl with cinnamon or ground cloves and stir occasionally to release the scents. If you have essential oil, sprinkle a few drops to revive it.

Relive those travels. With travel on hold for the foreseeable future, relive former trips by journaling. Gather an empty notebook or journal, scraps of paper and find photos, travel tickets or other memorabilia you may have and place in a book. It is a great activity for adults and children alike and can remind us of the beauty in the world when travel is off limits for now.

Evening

Take a deep breath. We are lucky enough to live in a beautiful part of the world, with Edlesborough, Eaton Bray, Northall and Dagnall located in the heart of the countryside. If you have a garden, stand outside for a few minutes before your pre-sleep routine. Soak up the beauty of the stars at night time. This is a good way to detach yourself from daytime worries.

Select bedtime reading. Current affairs can re-energise your mind at the wrong time so restrict yourself to fiction or magazines suitable for mulling over as you drift to sleep. Never take work to bed. With many people now working from home and balancing family life, it might be tempting to read that report in bed or reply to emails, but this

will blur the boundaries between work and rest, making it more difficult to sleep. Subconsciously, your brain will begin to associate your bed with work, which is certainly counter-productive to a good night's sleep.

For those with a thirst for knowledge, there are a variety of online courses, from cooking and exercising, to painting and learning new skills, many of which are free. However, not everyone has access to the Internet and sometimes it can be healthy to take a break from the digital world.

Everyone adjusts differently to the current situation, but it is safe to say that we will all have positive and negative days. These suggestions could well help you through these challenging and unusual times.

LET YOURSELF REST

If you're exhausted, rest.

If you don't feel like starting a new project, don't.

**If you don't feel the urge to make something new,
just rest in the beauty of the old, the familiar, the known.**

If you don't feel like talking, stay silent.

If you're fed up with the news, turn it off.

If you want to postpone something until tomorrow, do it.

If you want to do nothing, let yourself do nothing today.

**Feel the fullness of the emptiness, the vastness of the
silence, the sheer life in your unproductive moments.**

Time does not always need to be filled.

You are enough, simply in your being.

Jeff Foster



Nigel's Thoughts

Methodist Minister



Dear Friends,

What to write for this online edition of Focus, given that we are all seeking to do our best and the 'right thing' in these demanding, deeply painful and truly unsettling days?

A friend recently wrote these words

“Although this time is awful
All of us are trying.

In the aftermath, may the ache for those lost
and the teachings taken from this trying time
augment our affections and attach us to what is true” (Ali Tebbs)

It was Pontius Pilate, the Roman Governor, who asked Jesus “What is truth”. Maybe the answer to that question is, for each one of us a subjective one. Or maybe, just maybe, as a society we are beginning to learn that truth has something to do with that which is beyond ourselves. We may call this society, community, caring, living generously and with wider horizons, or simply love: expressed in a hundred different ways as we seek the means to support one another through these dark days.

Will we be kinder, gentler, more connected people as a result of all that we have faced together? Time will tell. I do hope so.

Gideon Heugh wrote: -

“These are the days to remember who we're made to be: loved, accepted, worthy, free
Days to see that a saviour is shining in the dark
Declaring that love is alive and its designed for our hearts,
These are the days for stones to be rolled back
For joy to rise up and peace go on the attack,
These days will show that darkness, is just a place where light begins,
And that no matter how strong the fear, love always wins”

God bless,

✍️Nigel

**A group of
porcupines is
called a Prickle**





City & Guilds

**Leighton
Plumbing & Heating**

Oil Boilers

Serviced & Repaired

01525 385250
07774 567472

Email - leighton-plumbing@ntlworld.com
Website - leightonplumbingandheating.co.uk

Please see our reviews on
boilerjuice.com / myboilerservice.com

Oftec registered & insured

Phasels, Billington Road, Leighton Buzzard
LU7 9HH

Crittercare

Dog walking & pet sitting

We look after any animal from

Hamsters to horses

Prices start from £6 per day

Tel: 07756930814

Email: crittercare142@hotmail.com

Or find us on Facebook @crittercare142

Laptop & Computer

Server, Printer, Apple, Setup, Repairs,
Data recovery, Internet, Wireless, Network,
Virus infection, Home/Office computer problems.

Services from £40.

Your local IT support, 7 days services, we visit you

No Fix - No Fee

Qualified, Experienced

PClaprepairs@gmail.com

01525 306316 – 07925 338435



**FREE INITIAL
CONSULTATION**

**ALL ACCOUNTING,
PAYROLL AND TAXATION
SERVICES COVERED**

Specialising in New Business Start-Ups

- Fixed Fee Quotes
- Unlimited Email and Telephone Support
- Back Office Solution
(dealing with your back office accounts function
enabling you to focus on the rest of your business)

Please contact us for more information...

Gable End, Sparrow Hall Business Park, Leighton Road, Edlesborough, LU6 2ES

Call us on... 01525 229 539

enquiries@rileyaccounts.co.uk • www.rileyaccounts.co.uk

[@RileyAccounts](https://www.instagram.com/rileyaccounts) • Also on [f](https://www.facebook.com/rileyaccounts) [in](https://www.linkedin.com/company/rileyaccounts)

"YOUR LOCAL ACCOUNTANT"



Stoten Gillam
chartered accountants
chartered tax advisers

**Our aim is to provide an outstanding
professional, cost effective and
friendly service**

- ✓ Established over 50 years
- ✓ Traditional values with forward thinking and modern technology
- ✓ Full range of business and personal accountancy and tax services
- ✓ Latest cloud software
- ✓ Free initial meeting



Tel: 01582 608601
99 High Street South,
Dunstable, LU6 3SF

Contact us today:
enquiries@stotengillam.co.uk
www.stotengillam.co.uk
[@stotengillam](https://www.facebook.com/stotengillam)

toni's tootsies

mobile foot health care

-  **Fungal Infections**
-  **Ingrowing Toenails**
-  **Callus/Hard Skin**
-  **Cracked Heels**
-  **Nail Reconstruction**
-  **Verrucas**
-  **Nail Trimming**
-  **Corns**



Toni Nash is a fully qualified Foot Health Practitioner based in Slapton, Bucks... and she's ready to take your Call!

07484 749393
 tonistootsies@gmail.com
 www.tonistootsies.co.uk

CDM Builders Ltd

07984086029

- GENERAL BUILDING
- NEW HOMES
- EXTENSIONS
- CONSERVATORIES
- ALTERATIONS
- BRICKLAYING
- GROUNDWORK
- PATIOS
- DIGGER AND/OR DRIVER FOR HIRE

With over 20 years experience in the building trade

All aspects of work undertaken by our own professional tradesmen to a very high standard

Please contact Clive for a free quotation
 T: 01525 222605 M: 07984086029
 Email: Clive.munt@hotmail.co.uk

GENERALMECHANICALSERVICESLTD

VEHICLE SERVICING AND REPAIRS



- MOTs • MOT REPAIRS • SERVICING
- DIAGNOSTICS • TRACKING • AIR CONDITIONING
- TYRES • CAMBELTS • COLLECTION & DELIVERY
- WELDING & FABRICATION • BATTERIES

All vehicles - all mechanical work!

1 HONEYWICK LANE, EATON BRAY, LU6 2BJ
 reception@general-mechanical-services.co.uk
 www.general-mechanical-services.co.uk



01525 222876



Peace of mind for motorists.

All Trees & Hedges

Reliable & friendly service • Family run business
Competitive prices • Qualified advice • Fully Insured

Tree work undertaken

Tree felling • Precision dismantling • Crown reduction
Crown thinning • Crown lifting • Formative pruning
• Stump grinding • Stump removal
Deadwooding • TPO / conservation area work

Hedge work undertaken

Hedge reduction • Hedge planting • Hedge trimming
Shrub clearance • Hedge laying

Other Services

Grass Cutting • Fencing • Green Waste Recycling • General
Garden Maintenance • Tree Lighting • Logs / Kindling

CALL NOW ON:

07701 094 934
01525 220 823

E: info@alltreesandhedges.com

W: www.alltreesandhedges.com

WHITE WATER

EXTERIOR CLEANING SPECIALISTS

Driveway & Patio Cleaning

"We use an innovative, biodegradable method that eliminates dirt & kills mould, blackspot & algae, sanitising the surface. The results last 4 to 6 times longer than pressure washing alone."

- We also clean:
- Conservatories
 - Decking
 - Windows
 - UPVC
 - Solar Panels

01525 234120 | 07807 973871

email: info@white-water.co.uk

www.white-water.co.uk



Frustrated with Home Technology?



Then contact us to solve your home technology problems. We can help with:

- WiFi/Broadband boosting or extending
- Smart TV and Wireless speakers
- Smartphone, PC and Printers
- Smart Home installations



Tel: 01296 534537

www.thetechnologydoctors.co.uk



fitness 4 fun



Get those muscles working! Tone and strengthen arms, legs, bums and tums – you'll look and feel great.

Why not give it a go? Only £6 per week for one hour of fun fitness. Pay-as-you-go, come when you can.

Come along and join our friendly group.

Everyone welcome.

No need to book – just show up.

What: Fitness4Fun with Kay

Where: Edlesborough Memorial Hall

When: Every Friday, 10:00-11:00 am

OAKSTONE

ARCHITECTURAL DRAWINGS AND PLANS

Oakstone Ltd specialises in design, drawing and building plans for:

- Planning applications
- Building Control approval
 - Residential
 - Commercial
 - Agricultural
 - Listed Building Consent

To arrange a FREE initial consultation please contact:
ash@oakstoneltd.com or call **07884 268079**

For more information about previous projects undertaken and what we do please visit:
oakstoneltd.com



...for all your pest solutions

Peter Tong
(RSPH Level 2)

01525 220653
07958 669706

Email: peter@nimbypest.org.uk
www.nimbypest.org.uk



JACKSON
CONSTRUCTION UK

PASSIONATE ABOUT YOUR PROJECT

07527 710 119

dave@jacksonconstructionuk.co.uk
www.jacksonconstructionuk.co.uk

Extensions & Conversions
Kitchens & Bathrooms
Driveways & Patios
Fencing & Landscaping



Lisa Arch Home Styling

Transform your home with my Dunstable - based home makeover service — designer looks tailored to fit your taste and budget.

07528 220311

Lisaarchhomestyling

lisaarchhomestyling@outlook.com



Pampered Pups

Mobile dog groomers

Call to book an appointment

07394 672646

pampered.pups8@gmail.com

www.pamperedpupsuk.com

We come to you
No Mess
No Stress



Grooming Washing Drying Nail Clipping



ARCHITECTURAL DESIGN
CONSULTANCY

Residential extensions and
conversions

Retail and Commercial
Free initial consultation

Planning and Building Control
Approvals Obtained

O: 01442 842 917

M: 07795 557 911

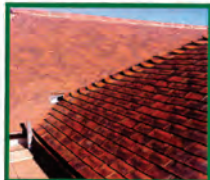
E: info@peakadc.co.uk

CLARIDGE & HALL BROS LTD

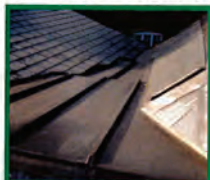
ROOFING DIVISION

Quality work at competitive prices in Harpenden
and the surrounding areas.

WE SPECIALISE IN ALL TYPES OF ROOFING WORK



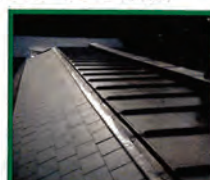
Handmade clay roof filling



Lead work and Spanish slating



Handmade clay tiles roof in progress



Finished lead work and slating

Please telephone:
Graham Parkins for advice or a
FREE QUOTATION on **01582 840201**
www.roofingharpenden.com

**CLARIDGE
& HALL BROS LTD**
MARKYATE est 1890
01582 840201

Flex & Stretch Class



**Stretch the entire body.
Target primary muscle groups
surrounding the hips, hamstrings
& upper back including breathing
techniques.**

**Everyone welcome
No need to book – just turn up
£5 pay as you go
Tuesdays 11am till 12 noon
Edlesborough Memorial Hall**

London Luton Airport

With an increase in aircraft in the area and in particular when the wind is from the East, we are getting some aircraft flying directly over the village to join the flight path into the airport. If you are disturbed by the traffic flying over the village, there is a complaints hotline number: 01582395382. This is an airport number where you can register your concerns. It is important to do this if we are to reduce these disturbances over our village.

If you need to complain about Heathrow flight noise the number is 0800 344 844.
Email: noise_complaints@heathrow.com



Come for Coffee at St Mary's, Eaton Bray

**For a warm welcome and
a cheering cuppa
each month in
St Mary's Church
Eaton Bray
10.30am - midday**



**1st Saturday of each month
(except July - 2nd Saturday)**



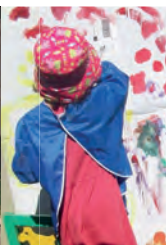
A committee run playgroup set in Dagnall Village Hall for children aged 2 to school age

We operate five mornings a week from **9:15 - 12:15**



Ofsted Comments

- Staff are consistently kind and caring which supports children to develop confidence and resilience
- Teaching is consistently good and children's safety is given the highest priority
- Children learn good manners and know how to treat each other with respect



If you think your child would be happy here please phone our Playgroup Leader, Ann Tobin on 07816 358 342
www.dagnallunderfives.co.uk

La Maison Bespoke Furniture

We build to your design.

Tables & Chairs

Bedroom Furniture

Kitchens

Floorboards



Made to measure solid wood furniture

Handmade carpentry

Fitted or Freestanding

Family run business for over 30 years

Visit our Website: www.bespokefurniture18.com

Email: astonint@btinternet.com or Phone: 07791 805159

FIND OUT WHAT YOUR HOME IN DUNSTABLE IS WORTH



Use My FREE Instant Online Valuation Tool

If you're thinking of moving, start by getting a **Hometrack Valuation Report** to see how much your home is worth.

Hometrack is the UK's largest automated valuer of residential properties and is relied upon by 13 of the 15 top UK high street lenders.

This report normally costs **£19.95** and includes **ALL** recent house sales near you!

Lacey Brooks
Branch Director



Get your **FREE** online valuation report now at: **www.EweMove.com/Dunstable** or call: (24/7) **01494 292 359**



EweMove respects any existing sole agency agreement already in place with another agent.

Edlesborough Baptist Church

Pastor: Alister King
gbcepastor@gmail.com
07572 395687

Weekly Activities

Sunday Services

11am Morning Worship
6.00pm Evening Worship

2nd Monday

2.30pm SilverLink for over 60s

Wednesday

10am (term time) Caterpillars Toddler Group
7.30pm LIFE Groups
(ring for details and to confirm venue)

Find us on Facebook @gbce2014

The Salvation Army Booth Place



Sunday

Footprints (Sunday School) 9.45 - 10.45am
(Term time only)
Morning Worship 11am

Tuesday

Coffee Morning 10 - 11.30am
(Alternate weeks)

Wednesday

Home League 2.30 - 3.30pm
(Ladies meeting but all welcome)
Champion's Club (Term time only)
5.30-6.30pm (Ages 5 to Year 5)
6.45-7.45pm (Year 6 and above)

Thursday

Girls' Night Out
(1st Thursday of the month) 7.45pm
Ladies Fellowship
(Last Thursday of the month) 7.30pm

**For further details please contact us on
01525 222087 or email
eaton.bray@salvationarmy.org.uk**



Stay & Play Toddler Group

Musical Monkeys

Eaton Bray Village Hall
10-11.30am on Fridays

£4.50 for one adult and child
£1 for extra children/adults
0-6 months free

Holiday Home to Let Bridport Dorset



Sleeps 7 - Fully equipped
Close to all amenities
Visit: www.bills-house.com
enquiries@bills-house.com
or tel. 07850 601007



Prestigious Blinds & Shutters

BLINDS MADE EASY FOR YOU

Tel 01525 591 001

prestigiousblindsandshutters.co.uk



Book your
FREE design
consultation
now...



Beautiful, Elegant and Bespoke

Premium made to measure blinds and shutters supplied and fitted

IN SAFE HANDS - AT HOME SHOWROOM SERVICE

We are a local trusted family business; our experienced design consultants visit you at home and can advise on styles and solutions to suit your budget and style.

A Lazy Morning for Mikumi and Clara

Behind the closed gates of the Zoo, life goes on for our team of dedicated zookeepers, grounds staff, security and vets. At ZSL Whipsnade Zoo our white rhinos Mikumi and Clara were caught enjoying a lazy morning by zookeeper Charlotte, who is still working at the Zoo to care for our resident animals through this time.



ZSL Whipsnade Zoo's Keepers are Celebrating some Positive News, with the Arrival of an Adorable New Yak Calf

Born to Mum Hermione and Dad Voldemort at the UK's largest Zoo on Thursday 26 March, the yak (*bos mutus grunniens*) calf will be named after its first health check, when vets will be able to determine its sex.

Whipsnade's zookeepers have a tradition of naming members of the yak herd after characters from JK Rowling's Harry Potter books – and are looking forward to finding out if this one will be a Ginny or a Draco in a few weeks.

Team Leader Donovan Glyn said; "It's magical to be able to share the wonderful news of the newest arrival at ZSL Whipsnade Zoo. The calf is doing really well, sticking close to mum while they are exploring the herd's paddock together.

"While so much is changing in the world, it's wonderful to be able to come to work and see life go on with our animals – and even more so to see new life beginning."

The youngster joins Luna, Harry and Bellatrix at ZSL Whipsnade Zoo's Asia section, an area shared

with other fantastic beasts, including Asian elephants and Asian rhinos.

ZSL Whipsnade Zoo, run by international conservation charity ZSL, is appealing to its supporters, neighbours and animal lovers alike to help care for the thousands of animals, including the yak herd, who call the Zoo home while it is closed to the public.



**HELP US
ROAR BACK
INTO ACTION**

With your help we can feed our animals and keep the Zoos running until it's time to open our doors again.

[See zsl.org to Donate](https://www.zsl.org)

ZSL | WHIPSNADÉ ZOO

Mammoth Matchmaking

It's often said that spring marks the start of new life and ZSL Whipsnade Zoo's new male elephant appears to have taken the adage to heart.

12-year-old Asian bull elephant, Ming Jung, was recently introduced to the females in the herd for the first time since arriving at ZSL Whipsnade Zoo in 2019, and as photos taken by keepers demonstrate; the mammoth matchmaking appears to have been a success. Moving to Whipsnade from Antwerp, as part of the European Endangered Species Programme (EEP), where a studbook holder coordinates the breeding programme for an entire species to ensure a healthy and genetically diverse population is protected in zoos. Classified as Endangered and with numbers in decline a birth would be a celebration for the whole species - Ming Jung has clearly taken his role very seriously. ZSL Animal Operations Manager, Matthew Webb said; "We're absolutely delighted that the introductions between Ming Jung and



our girls has been so positive – we just didn't realise how well they would go!

"Animal introductions are something we carefully manage to ensure they are all content and ready – the elephants 'meet' over fences first and we observe their behaviour. The girls seemed really receptive to Ming Jung, and he is quite obviously smitten with them!"

Matthew continued; "Ming Jung is a genetically important animal for the future of the species – he represents a new lineage. We work really closely with the elephants and know their personality traits and quirks – so we'll watch those for any signs, and in six weeks a scan should tell us if we can expect a new arrival in 22 months!"

Tiny Trotters

Litter of wild boar piglets born at ZSL Whipsnade Zoo

Zookeepers celebrated a bumper Easter weekend with the birth of five wild boar piglets. Resembling a wriggling bundle of mint humbugs, the piglets were born to wild boar parents Wilma and Otis.

Zookeeper Gracie Gee said: "Wilma has taken motherhood in her stride, but dad Otis seems a bit more overwhelmed by the arrival of five little ones – his plans for a relaxing bank holiday weekend went straight out of the window. We're excited to see them develop – currently weighing just 1kg, they've got a lot of growing to do – a fully grown adult male can weigh up to 100kg! The piglets are a really welcome new arrival to Whipsnade and a nice boost for us keepers



who are still working hard while the zoos are closed to the public."

Born with black stripes down their backs, the infants will lose the stripes as they get older and develop the all-over dark fur of their parents.

While closed to the public, the UK's largest Zoo, run by international conservation charity ZSL, is appealing to supporters and animal lovers to help care for the thousands of animals who call the Zoo home while it is closed to the public. Donate now by visiting [zsl.org/support-our-zoos](https://www.zsl.org/support-our-zoos)

Dagnall Weather Station (AONB)



Weather Conditions for March 2020

Elevation: 450 ft - Latitude: 51° 50' 13" North - Longitude: 0° 33' 34" West

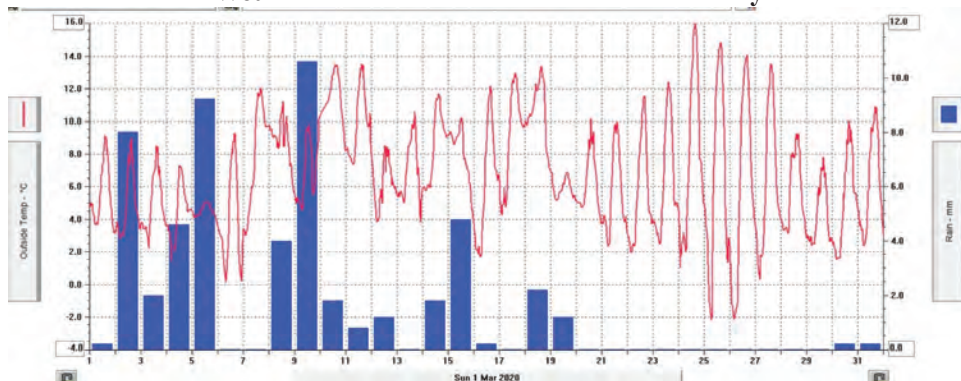
The first few days of March were unsettled, showery and cool. Although it became milder by the 7th, it remained unsettled. On the 16th, slightly warmer weather arrived with a mix of cloud and brighter intervals. Then, by the 21st, high pressure was over us which gave us warmer days and cool nights. There were only two nights where the temperature dropped below zero: on the 25th and 26th when we recorded 2.2°C. At the end of the month, we had a light dusting of snow. The wind reached 42mph, becoming the norm, and the rain was 96% of the 12 year average.

	High	Date/Time	Low	Date/Time
Temperature:	16.0°C	24 March 15.30	- 2.2°C	25 March 06.30
Mean Temperature	6.7°C			
Dewpoint:	11.2c	10 March 11.30	- 2.2°C	21 March 12.30
Humidity:	95%	5,6,10,14,16	31%	25 March 16.00
Barometer:	1039.6mb	29 March 20.30	983.7 mb	2 March 03.00
Wind Speed	42 mph W	10 March 15.00	Months avg.	6.9 mph
Wind Chill:	15.6°C	12 March 15.00	- 2.2°C	25 March 06.30
Dominant Wind:	W			
Rainfall *T= total rain days and moisture. R= Actual rain				
*Rain Days: 17(T), 17(R)	Wettest Day 9		10.95 mm	0.431ins
Monthly Rain:	Total	March 2020	53.00 mm	2.087 ins
Yearly Rain:	Total	3 Month	268.8 mm	10.582 ins

March 2020 - A Month of 2 Parts

Wet

Dry



For weather data 24 hours a day, updated every 15mins, visit: www.dagnallweather.co.uk and http://bit.ly/weather_dagnall, including this site forecast and much more.

If anyone has a question, comment or wishes to contact me please email: david@dagnallweather.co.uk or telephone: 01442 843883.

Dagnall weather now has an app for your iPad & iPhone! Just go to the apple store, search for Wunderstation and follow the instructions to Dagnall Weather Station. Now updated every minute.

Edlesborough W.I.

I am pleased to report that we enjoyed an interesting talk from Peter Burford about the Frogmore Paper Mill entitled, 'Rags to Riches'. This particular Frogmore is on the outskirts of Hemel Hempstead alongside the River Gade. Paper mills and paper making require a plentiful supply of clean, fresh water, which as a chalk stream, the Gade provided.

Paper was originally discovered in China, many, many centuries ago and it took a very, very, long time, before paper 'made it' across Europe and eventually to England. Before paper, there was only parchment which was made from animal hides and it took a great many of these and was, therefore, expensive. This also meant that before paper, there were no books, no children going to school and absolutely nobody could read because of this. Originally, paper was made

from rags i.e. cotton and flax – hence the Rag and Bone man's collection. In the 19th century, wood became the main component of paper.

Peter talked us through the way paper is made along with its detailed history accompanied by explanatory slides. Frogmore played a very important part in this and in 1803 it hosted the first paper making machine. Of course, in more recent times it has become much more technically advanced. Watford also became the centre of the paper making industry.

It is worth noting that paper nowadays can be recycled up to seven times in all and, at least, half of all paper nowadays, is recycled.

The Frogmore Paper Mill is still open for visiting groups etc. There is much history attached to it and it was, in its time, a very important local industry.

✍️ Sue Parker

off the mark.com

by Mark Parisi



SMILE WITH BLUE CROSS

Blue Cross has linked up with Amazon Smile and now when you shop online using Amazon Smile, you can nominate Blue Cross to receive a donation of 0.5% of your spend. Simply click this footer and choose Blue Cross to be your charity to receive donations.

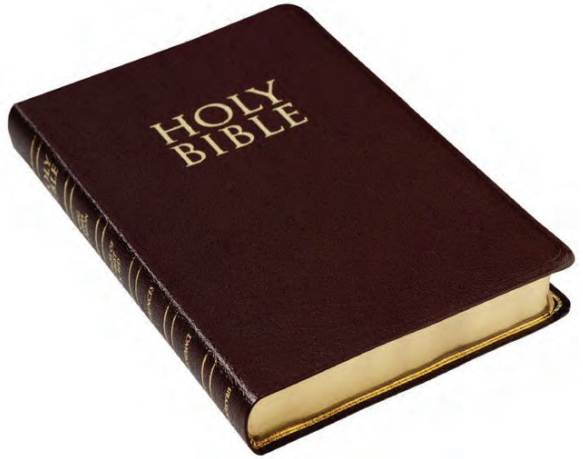


amazon smile

CLICK HERE



*The Salvation Army hall
in Booth Place LU6 2DR*



1 In the beginning was the Word, and the Word was God. The same was in the beginning with God.

All things were made by him; and without him was not anything made that was made. In him was life; and the life was the light of men. And the light shineth in the darkness; and the darkness comprehended not.

There was a man sent from God, whose name was John. The same came for a witness, to bear witness of the Light, that all men through him might believe. He was not that Light, but was sent to bear witness of that Light. That was the true Light, which lighteth every man that cometh into the world. He was in the world, and the world was made by him, and the world knew him not. He came unto

his own, and his own received him not. But as many as received him, to them gave he power to become sons of God, even to them that believed on his name: Which were born, not of blood, nor the will of the flesh, nor the will of man, but of God. And the Word was made flesh and dwelt among us, (and we beheld his glory, the glory as of the only begotten of the Father,) full of grace and truth. John bare witness of him, and cried, saying, This is he of whom I spake, He that cometh after me is preferred before me: for he was before me. And of his fulness have all we received, and grace for grace. For the law was given by Moses, but grace and truth came by JESUS CHRIST.

St John. Chapter 1. Verses 1-17.



Premier Garage Doors & Gates



Quality Garage Doors



- ✓ **Superb choice of designs in steel, timber and fibreglass**
- ✓ **Any size door made to your requirements**
- ✓ **Large selection of spares & fast repair service available**
- ✓ **New or existing doors converted to automatic**
- ✓ **Professionally fitted by own expert craftsmen**
- ✓ **Prompt free estimates & advice**
- ✓ **We cover all areas**



(EST 1984)



Unit 7, Sparrow Hall Farm, Leighton Road, Edlesborough LU6 2ES

01525 220212

www.premiergaragedoors.co.uk



JANES APPLIANCES

COMPLETE RANGE OF HOME & KITCHEN APPLIANCES

**LIVE LOCAL -
SHOP LOCAL**
Be proud to support
your local store

At Janes, we carry a huge stock of all the vital home appliances you need. From cookers, fridges, freezers, washing machines, dishwashers to small appliances, such as kettles, toaster and blenders! All in stock and available for same or next day delivery.

Looking after our customers since 1891,
the 5th generation family business


- Price Match Promise
- All Brands – All Products
- Free Installation (excludes Built-in)
- Disposal of Old Appliance (excludes Refrigeration)
- Same Day Delivery on in-stock items



**If you need it & We've got it
WE WILL GET IT TO YOU**
Check out our Website
for stock availability
Or Call 01525 220208



Call or visit me,
Andrew Janes, today.

 01525 220208

 4-6 High Street, Edlesborough, LU6 2HS.

BUY ONLINE!



www.janesltd.co.uk