

FOCUS

June 2017



The local village magazine just for Us!
Eaton Bray, Edlesborough, Northall & Dagnall
Focus is online at www.thefocusmagazine.co.uk

The White Horse Inn
At Eaton Bray

Market Square
Eaton Bray
Beds
LU6 2DG
01525 220 231
www.eatonbraypub.co.uk



Try our
Spring menu
lovely lunchtime smaller
plate options now
available

1st July 2017 - The carnival is coming!
See the carnival floats first outside The White Horse
Then join the procession to Edlesborough
St Mary's Village Carnival – a great day out!

The White Horse is the ideal venue for both
Family or Business
Get-togethers.

call now for details of menus and offers!

Ploughman's Lunches



Cakes and stalls,
Games and fun
All welcome

Saturday
8th July
11.30—2.00 pm
All Saints Church,
Dagnall

Supporting:
Dagnall C of E School
and
All Saints Building Fund

The Focus Magazine Committee

Editor: Sally Siddons

34 Wallace Drive, Eaton Bray 221733

Email: sallysid@hotmail.com

Assistant Editor: Liz Constable

Eaton Bray 222234

Email: lizconstable@hotmail.co.uk

Dagnall Representative: Sue Cawdell

10 Deans Meadow, Dagnall 01442 842200

Circulation Manager: John Plater

41 Church Lane, Eaton Bray 221095

Treasurer/Leaflet Enquiries: Ken Coates

10 The Nurseries, Eaton Bray 220868

Business Advertising: Sally Siddons

34 Wallace Drive, Eaton Bray 221733

Design and Layout: Tracey Moren

(Moren Associates Limited) 01525 229695

Printed by: PRIORITY Press

Dunstable 01582 699851

Copy for publication to the Editor by the

10th of the month

Focus accepts no responsibility as to the accuracy or content of any advertising or articles published in 'this' magazine, neither do they reflect the opinion of members of the Committee.

© Articles published in Focus may not be reproduced without permission.

Focus would like to remind contributors that the deadline for articles is the 10th of the preceding month

Kindly Note

If the event you wish to advertise falls in the first week of the month, it is advisable to get the details into Focus a month earlier. The magazines are not delivered from the printers until the first of the month, therefore it takes a few days for them all to be circulated throughout the village.

✍️ Editor

NORTHALL BAPTIST CHAPEL

Chapel Lane, Northall

(just beyond the 30 speed limit signs on the road towards Leighton Buzzard)

Everyone is welcome to our Sunday worship each week between 11am and 12.30pm including tea/coffee and time to talk together.

For more information contact:

John Hazell 01525 218142

Email northallchapel@btinternet.com

There has been a Baptist Chapel in Northall for more than 200 years. Today we continue to seek to worship God, serve him in our daily lives and support and encourage one another in the difficult and the joyful times.

Focus is online at www.thefocusmagazine.co.uk

Village Diary June 2017



Weekly

- Mon-Fri (term time) Eaton Bray Pre-school, Eaton Bray Lower School, 01525 220468
- Mon-Fri (term time) Dagnall Under 5's, Dagnall Village Hall, 9.15am - 12.15pm, Mrs Ann Tobin 07816 358342
- Mon-Fri (term time) Edlesborough Pre-School, Edlesborough School, 01525 220431
manager@edlesborough.bucks.sch.uk
- Mon-Thu (term time) Totternhoe Pre-school, mornings, Totternhoe Lower School, Michelle Urbanowicz on 01582 668841
- Mondays Pilates, 10.45am, Totternhoe Memorial Hall, Lisa: 07799 893489
- Mondays Dagnall Community Choir, All Saints Church 7.45 – 9.45pm
- Mondays (term time) Movement and exercise classes with a dance flavour, Northall Village hall 2-3.30. Contact Jan 01442 864271.
- Mondays Curtain Call Youth Theatre 5-7.30pm, Eaton Bray Village Hall, Gavyn 01525 220525
- Mondays Curtain Call Theatre Group - 7:30-10:30pm Eaton Bray Village Hall, Sheila - sdtwinkletoes@yahoo.co.uk
- Mondays KFPA ISTD Classical Ballet classes, 3+yrs, 4.15pm, Edlesbrough Memorial Hall, www.kfpa.co.uk
- Mondays Cubs (8-10 ½ years old), 6.30pm - 8pm, 1st Eaton Bray & Edlesborough Scout Hut, High Street, Edlesborough. Contact Liz Coates 01442 842550
- Tuesdays Line Dancing, 1.30-3p.m., Eaton Bray Village Hall, Lyn Stubbs 220731
- Tuesdays Pilates, 10-11am, Eaton Bray Village Hall, Nicky Roussou 07861 162680
- Tuesdays Totternhoe Baby & Toddler Group, 9.30-11.30am, St. Giles Church Hall, Ruth Allen, 01525 222468 or 07796 265174 or email ruthallen002@gmail.com
- Tuesdays Northall Baby & Toddler Group, 9:30-11:30am, (open in the Summer School Holidays) Northall Village Hall, Sam George: 07748 152379, Tracy Bennett: 07803 123318
- Tuesdays Tap & Ballet Classes, JoAnn Latus School of Dance, 4-8pm, Eaton Bray Village Hall, 01582 620576
- Tuesdays Beginner's Boxercise, 6-7pm Dagnall Village Hall, Josh Thompson 07456 574405 or jtpinfo@gmail.com
- Tuesdays Coffee Morning, Bring & Buy, Table Top Sale, 10-12noon, Salvation Army Hall, Booth Place, Eaton Bray
- Fortnightly
- Wednesdays Pilates, 7.15pm, Northall Village Hall, Lisa: 07799 893489
- Wednesdays Egyptian Dance Class, 7.30-8.45pm at Eaton Bray Village Hall. Contact: Soraya on 07976 964316 for more details
- Wednesdays Northall & District Age Concern Wednesday Club, 10am - 3pm, Northall Village Hall, Contact Anna on 07854 230243
- Wednesdays Caterpillars Baby and Toddler Group 10am to 11:30am, Grace Baptist Church, Moor End, Edlesborough, £1 per family unit, Frances King 01582 475896
- Wednesdays Pilates 6.45 & 7.45pm, Dagnall Village Hall, Andrea on 07855 138005 or andrea@naturalpilates.co.uk
- Wednesdays Art of Ju Jitsu martial arts class, Eaton Bray Village Hall, 7 -7.45pm ages 6-15yrs
- Thursdays Yoga, Northall Village Hall, 11.30am-1pm 01525 377542
- Thursdays Baby & Toddler Group, Salvation Army Hall, Booth Place, Eaton Bray, 9.30-11.30am
- Thursdays Jazzercise, 9.30-10.30am, Eaton Bray Village Hall, Angela Veryard, 01525 715208
- Thursdays KFPA Street dance classes 4+yrs 4pm, Edlesborough Memorial Hall, www.kfpa.co.uk
- Thursdays Tae Kwon-do, Dagnall Village Hall, 5.45-7.30pm 07813 755785
- Thursdays Clubbercise 7.30 - 8.30pm. Eaton Bray Hall - Gina Flitton 07846421756
- Thursdays Beavers (6 to 8 years old), 6.15-7.30pm, 1st Eaton Bray & Edlesborough Scout Hut, High Street, Edlesborough. Contact: ebebeaverleader@ebescouts.co.uk
- Thursdays Explorers Scouts (14-18 years old), 8pm-9.30pm, 1st Eaton Bray & Edlesborough Scout Hut, High Street, Edlesborough. Contact Simon Betts, lionheartesu@hotmail.co.uk

Village Diary June 2017

- Thursdays Intermediate Boxercise, 7.30-8.30pm, Dagnall Village Hall, Josh Thompson 07456 574405 or jtpinfo@gmail.com
- Fridays Tap & Ballet Classes, JoAnn Latus School of Dance, 4-8pm, Eaton Bray Village Hall, 01582 620576
- Fridays Stay & Play toddler group, 'Musical Monkeys' at the Eaton Bray Village Hall, 10-11.30am, £4.50 for one adult and child, £1 for extra children/adults, 0-6 months free
- Fridays Keep Fit class, Edlesborough Memorial Hall 10 - 11am
- Fridays Scouts, 10 ½ to 14 years old), 7.00-8.30pm, 1st Eaton Bray & Edlesborough Scout Hut, High Street, Edlesborough. Contact Mark Owen, 07899 892344, ebescoutleader@ebescouts.co.uk
- Fridays (term time) Kids Club 6:00pm to 7:00pm Grace Baptist Church, Moor End, Edlesborough (across from the post office) Frances King 01582 475896
- Fridays (term time) "Little Luvvies" baby ballet classes 10am-11.30am. Contact Emma Whittemore on 01525 376124
- Saturdays Jazzercise, 9.30-10.30am, Eaton Bray Village Hall, Angela Veryard, 01525 715208
- Saturdays KFPA Musical Theatre classes 4+yrs www.kfpa.co.uk, 10am, Edlesborough Memorial Hall
- Saturdays Bootcamp Fitness, 9-10am, Dagnall Recreation Ground, Josh Thompson 07456 574405 or jtpinfo@gmail.com
- Sundays Sunday Worship at 10:30am and 6pm Grace Baptist Church, Moor End, Edlesborough (across from the post office). Alister King 07572 395687

Monthly

- 1st Monday Eaton Bray Parish Council Meeting, 7.30pm, The Coffee Tavern (except January-2nd Monday)
- 1st Monday Eaton Bray W.I. Meeting, 7.30pm. Eaton Bray Methodist Church Hall. Contact Margaret Jones on 01525 220991
- 1st & 3rd Tuesday Dunstable & District Orbit (social and charitable) Club meet at Dunstable Rugby Club at 8pm. For details contact 01525 222441 or 01582 755147
- 1st Saturday St. Mary's Church, Eaton Bray Coffee Morning & Plant Sale, 10:30am - 12 noon
- 1st Sunday St. Mary's Edlesborough Open Days, 2-5pm, May to September inclusive
- 2nd & 4th Tuesday TOTS, St Mary's, Eaton Bray, 2pm
- 2nd Tuesday Dunstable & District Local History Society meeting, 7.45pm, Methodist Church Hall, Dunstable (opposite Wilkinson)
- 2nd Tuesday Edlesborough W.I. Meeting, 7.30 pm, Edlesborough Memorial Hall
- 2nd Wednesday St.Mary's Ladies Guild, 2pm, St.Mary's, Eaton Bray
- 2nd Wednesday Eaton Bray & Edlesborough Lions Club, 7.30pm, The Coffee Tavern
- 2nd Thursday CAMEO Coffee, tea & chat, 10am-12noon, Edlesborough Methodist Church
- 2nd Saturday Workshops Dynamic Yoga 9.30-11am £10 Eaton Bray Coffee Tavern, Keira 07936 693696
- 3rd Thursday Edlesborough Parish Council Meeting, 7.30pm, Memorial Hall
- 3rd Sunday Lunch club 11.30 to 2.00pm, Eaton Bray Village Hall, Chris Hewitt 222288
- 4th Tuesday The Filling Station, 7:30pm, Bellows Mill, Diane 07815 895501, Email: threecounties@thefillingstation.org.uk
- Last Saturday Coffee Morning, 10:30-12 noon, Edlesborough Methodist Church
- Last Sunday Messy Church, 3-5pm, Salvation Army, Booth Place, Eaton Bray, 07932 057490

Other Regular Events

- 4th Beds Area Narrow Gauge Model Railway Club Meeting, 11.30am-4.30pm, Eaton Bray Village Hall
- 9th Leukaemia Research Coffee Morning and plant bring and buy, 2 Dunstable Road, Dagnall 10.30am. All welcome.
- 20th Dagnall and Kensworth Friendship Club, Garden Party at 2 pm in Rosemary and Brian's garden 6, Dunstable Rd Dagnall

Village Diary June 2017

One Off/Annual/Irregular Events

9th	Eaton Bray Academy Pre-school Nursery Open Morning, 9:30-11am
9th -10th	14th Eaton Bray Village Hall Beer & Cider Festival
10th	Eaton Bray Methodist Church Music Night, 7:30pm
16-17th	EdlesFest, St Mary's church Edlesborough
17th	Friends of Edlesborough School Sponsored Walk and Fun Day
18th	Marsworth Steam and Classic Vehicle Rally 11am-5pm Startop Farm
25th	Praise Picnic Dunstable Downs 11am
30th	AGM Northall Village Hall 7.30pm

Mr Geoff Spencer

Dagnall CofE School would like to thank the local parishioners for the kind donations in memory of Geoff Spencer.

Mr Spencer was a former school governor who served Dagnall School for over 30 years.

Open Gardens 2017

Although we have had some owners come forwards we haven't had enough response to continue the event this year. Spring has been slow arriving, leaving gardeners uncertain about committing. Suffice to say, it has been a very popular event over the last ten years, and we look forward to early expressions of interest for 2018. Sorry not to be able to run it in 2017.



Bus 73

Kindly note the 73 bus service has been withdrawn from 29 April. The only remaining bus service linking Eaton Bray with Leighton Buzzard is the 162/164, itself up for review in July 2018.



We believe there is to be a service no.43 from Studham to Leighton Buzzard via Dunstable and Totternhoe. This will run on Tuesdays only leaving the stop opposite the White Horse at 9:11am and returning from Leighton Buzzard at 12:16. It will be run by Dial a Ride but we have been told bus passes will be accepted.

Village Info



EDaN Community Transport
Peter Williams: 01442 842506

Village Hall Bookings

To book your local village hall for an event please contact the following:

Northall: Lorna Cabbage Tel: 07857 318696 Email: northallvhbookings@gmail.com

Eaton Bray: Norman Lee Tel: 01525 222831

Email: bookings@ebvh.co.uk Website www.ebvh.co.uk

Dagnall: Elizabeth Coates Tel: 01442 842550

Edlesborough Memorial Hall: Penny Pataky, Tel: 01525 229358

Email: manager@edlesborough-pc.gov.uk

Police Contact Numbers...

making neighbourhoods safer together

General Assistance (Recommended Number): 101 Emergency: 999

Bedfordshire Police (Eaton Bray)

Leighton Buzzard Police Station/Kathryn Horgan: 01582 473411

Typetalk: 18001 01582 473418

Email: LPT.LeightonBuzzardLinslade&Rural@bedfordshire.pnn.police.uk

Thames Valley Police (Edlesborough, Dagnall & Northall)

PCSO Jackie Dodson Mobile: 07800 703 524

Email: NHPT@thamesvalley.pnn.police.uk

Defibrillator Locations

These units are registered with the Ambulance Services. To access them, please phone 999. You will be given the access code and the location of the unit will be confirmed. The defibrillator is easy and safe to use. The units can be found on the outside walls of the following locations:

Dagnall: Red Lion Public House

Eaton Bray: The Coffee Tavern

Edlesborough: Edlesborough Memorial Hall

Northall: The Swan Public House

Eaton Bray



Helpline: 07930987064

**Manned phone hours: 9am to 5pm,
Monday to Friday**

(An answering service is available for out-of-hours calls)

Call us if you want help with getting to the surgery/hospital, collecting prescriptions, minor errands, form-filling, letter-writing, small d-i-y jobs, walking your pet or other small needs.

Services at St Mary's Church

SUNDAYS : 8.00am HOLY COMMUNION
10.00am PARISH SUNG HOLY COMMUNION

On Third Sunday of each month:

10.00am – WORSHIP FOR EVERYONE a shorter, less formal service for families. (For anyone wishing to attend a service where Holy Communion is offered, there is a Family Communion at 10.30am at All Saints' Church, Dagnall, where visitors are assured of a warm welcome).

WEEK-DAYS:

Tuesday: 2.00pm TOTS (Tots on Tuesdays) (2nd & 4th Tuesdays)

Wednesday: 10.00am Holy Communion

EVERYONE WELCOME AT THESE SERVICES



Welcome to Our New Vicar

St Mary's was packed on Wednesday 26th April when the Revd Joy Cousans was licensed by the Rt Revd Alan Smith, Bishop of St Albans, to be the new vicar of Eaton Bray with Edlesborough. Joy was previously vicar of High Hoyland, Scissett and Clayton West in the Diocese of Leeds. She trained for the ministry at Ridley Hall, Cambridge. Prior to ordination in 1992 she worked as a Youth Worker in London and Sheffield. Joy is married to Dave, a Yorkshireman who enjoys cricket and real ale. They have a dog, Barney, and both enjoy walking. Joy, Dave and Barney are settling in at the Vicarage in Eaton Bray.

Geoff Leary

With thanks

The family of Geoff Leary would like to extend heart felt thank you to all who attended his funeral, sent condolences or provided support at this difficult time. It was very much appreciated. There is a special mention and thank you to Nigel Bibbings for leading the wonderful tribute and service to remember Geoff's life and the contribution he made to the village of Edlesborough. Also many thanks for all the donations made in his memory. These totalled over £400. They have been distributed between the PACE centre, Aylesbury and Dementia UK.

Eaton Bray with Edlesborough Parish News

Church Warden & Pastoral Matters: Catherine Hayden (01525 220527)

Reader: Gordon Gray (01525 220136)

Website: www.stmaryseatonbray.org.uk

Facebook: St Mary's Eaton Bray

When I moved recently into the Vicarage, people asked me two questions. 'How are you settling in?' and 'Do you like gardening?' If you have seen the size of the Vicarage garden, you will understand why they wanted to know if I have green fingers! It was Candide who said we must cultivate our garden in order to do nothing in it. In my current garden I think that will be a long process. Gardens are spaces that can be beautiful; they can also encourage us to reflect.

Dorothy Frances Gurney wrote that we are 'closer to God in a garden than anywhere else on earth.' And it is probably true that gardening keeps us on our knees far more than prayer does. Of course, if we have a garden we need to spend time tending it, and that can be a way of drawing close to God. But there is also much to be said for spending time quietly in a garden in order to seek God's presence. For some spending quiet time in the garden is easy. For others, it is not really possible. Perhaps you don't have a garden or if you do it is just not a quiet place to be. Or possibly it's hard to sit and relax when the weeds are all around you! So where else is there to go?

The Quiet Garden Movement celebrates its 25th anniversary this year. It was started in 1992 by Revd Philip Roderick, an Anglican priest working in the Diocese of Oxford. It was an idea which had spent many years germinating since Philip's childhood. He was on holiday with his family in South Wales and went for an evening walk alone on the cliff top. He was suddenly aware of a different reality, of the presence of God. He later found out that he had been walking on the site of a monastic settlement. Over the years, his vision of a network of places where people could go to spend time with God grew and developed into the Quiet Garden Movement.

Ordinary people and communities offer up their gardens for others to come and enjoy. They are there to provide a place to relax, to be quiet and to pray. There is now a whole network of Quiet Gardens available to anyone who wants to come and use them, and the movement has spread all over the world. On its website quietgarden.org the movement describes its aims. 'The Quiet Garden Movement nurtures low cost, accessible outdoor spaces for prayer, contemplation, rest and inspiration in a variety of settings such as private houses, churches, schools and hospitals.' The concept is about 'sharing outdoor space for the inner journey.'

Gardens have always been a source of inspiration to people. They are places to go, relax, reflect and be refreshed. I hope you will have the opportunity to come 'closer to God in a garden' this summer.

✠ Joy, Vicar at St Mary's Eaton Bray with Edlesborough



Nigel's Thoughts

Methodist Minister



Dear Friends,

We are living at a time of rapid change, an exciting, enervating time in which new ways of doing things can seem to threaten to sweep away old certainties and patterns of relationship.

Perhaps, as I am, you are finding the speed of such change, in the country, our communities and the church to be somewhat disconcerting. Then there are the other difficulties in which we find ourselves, financial, political and social, which so often lead to other strains and stresses between individuals and within families.

On the day of Pentecost, which we particularly celebrate on 4th June this year, God poured out His Spirit on the infant church and boy, was there transformation! The remarkable effects of God's anointing the church with his Spirit caused people to think that the apostles had had too much to drink, but it was only 9 a.m. They had to think again. Could this be God powerfully at work in those he was sending as his witnesses, giving them boldness to speak and power to share their faith?

In the minds of a good number of wonderful Christian people, the church is a place that should not change. There is a sense in which the Good News which the church has to share does not change. But, if we do not or cannot move to embrace fresh generations with the love of Jesus in a changing world, we run the risk of having nothing to say with which others can connect, and becoming less and less relevant as they embrace a changing world, whether we like it or not!

FAITH spells out “**forsaking all I trust Him.**” It is the Holy Spirit who continues to make Jesus real in the twenty-first century, may we ask for the same Holy Spirit's guidance as we seek to be about God's work, especially as we seek to help others make sense of their lives in this rapidly changing world.

God bless,

✍️ Nigel

Appledown's Rescue Dog of the Month

There is never an excuse for dumping a dog, but to dump a nine-year-old leaves us speechless! In spite of everything, the joy and spirit in this brave little staffy shines through. Don't be put off by the grey muzzle, Jocasta still has plenty of go and loves a walk and a game of ball! She would suit an active retired couple and would probably live with a male dog pending introductions. Jocasta is a prime example of why older dogs should not be overlooked! She cannot live in Luton.

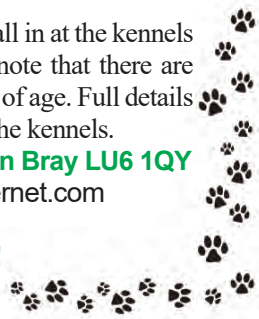
If you can offer Jocasta or any of our other dogs a forever home, please call in at the kennels any day between 10 am and 4 pm, or phone for more details. Please note that there are restrictions on rehoming dogs to families with children under seven years of age. Full details of the rehoming process can be found on our website, or please contact the kennels.

Appledown Rescue and Rehoming Kennels Harling Road, Eaton Bray LU6 1QY

Call 01525 220383 or e-mail: appledown.kennels@btinternet.com

Website: www.appledownrescue.co.uk

Follow us on Facebook, Twitter & Instagram!!





UNICORN WINDOWS LTD

“WHERE QUALITY & SERVICE ARE NOT A MYTH”

www.unicornwindows.co.uk

Tel: 01525 854272



Unit 3 Youngs Industrial Estate, Stanbridge Road, Leighton Buzzard

comput@mation
computer support & services

Computer Support for Business & Home

Problem Solving:

- Virus & Spyware Removal
- Internet & Email Assistance
- Fault Diagnostics
- Repairs & Upgrades
- Slow Running PC's

Sales:

- Desktops, Laptops & Tablets
- Printers & Peripherals
- Software

Services:

- PC, Mac & Linux Support
- Wired & Wireless Networks
- Data Recovery
- Install & Set-up
- Health Checks

On-site Visits:
Office Hours & Evenings
by appointment

For friendly advice call John Wallace: 07968 536068 or 01525 261381
Email: john@computamtion.co.uk
Web: www.computamtion.co.uk

Computamtion Services Ltd - Est.1999 with over 25 years experience
9a Lower Way, Great Brickhill, Buckinghamshire, MK17 9AG

Carpet & Upholstery Cleaning

Professional & Local

All work guaranteed - not happy, don't pay

Powerful equipment means drier much quicker than other methods

100% Guaranteed no chemicals left in carpet when dry therefore will not easily resoil & perfectly safe for children & pets

Recommendations account for 90% of my work

Absolutely no hard sell

Telephone Colin for a Free Quote

DEEP-CLEAN

01525 851 811

www.deep-cleaners.co.uk

Email: colin@deep-cleaners.co.uk

EDLESBOROUGH SURGERY

11 Cow Lane Edlesborough

Enquiries - 01525 221630 Appointments - 01525 220333

www.edlesboroughsurgery.co.uk

**Dr J R Bell, Dr Heather White, Dr Stephanie Johnston
Dr Kirsten Riemer, Dr Charlotte Fisher**

Friendly village Practice offering a wide range of health services including coils/implants, minor surgery, travel advice, in house blood tests, on-line appointments and repeat prescription ordering. Nurse Practitioners offering acute clinics with same day appointments. Also, Midwife, Health Visitors in attendance. Local District Nurse service.

Long established training Practice with a rotation of qualified doctors.

EDLESBOROUGH PHARMACY

01525 223181

Pharmacist – Mitul Patel

Friendly reliable professional service at the pharmacy and well established delivery service to the villages. Professional advice always available.

All doctors/dentists/veterinary and hospital prescriptions dispensed.

Herbal/Homeopathic products available. In addition – Disability Aids, e.g. wheelchairs, walking frames, incontinence aids, Ostomy products, Malaria prophylaxis, Erectile dysfunction, Salbutamol supply without prescription. Flu vaccination available.



For all your painting & decorating requirements
 Domestic and Commercial
 call Max for a free estimate with no obligation
maxbro@btinternet.com

D & E HINES
High-Class
Butchers
 Quality Beef, Pork & Lamb
 Grade A Poultry
 BBQ & Sausage Speciality
 Renowned for 'Bunkers Sausages'
 Telephone: 01525 220413
 98 High Street, Eaton Bray

30 Years Experience
 Domestic & Commercial Security



Burglar Alarms
Redcare Monitored Systems
Intercoms
CCTV
Access Systems
Locks



CERTIFICATE NO. NAC/G/2113

Quality Installations – Competitive Prices
 Insurance Approved Free Surveys

AAA SECURITY

01525 378222

Email: sales@aaasecurity.co.uk

www.aaasecurity.co.uk





Local family run business - Not a franchise

All chemicals used are Eco-friendly, non-toxic, non caustic and non allergenic
All work guaranteed and fully insured

All products are Child, Pet and Pregnant Safe

- Ovens & Hobs
- Extractor Hoods
- Microwave Ovens
- Agas
- Fridges
- Carpets
- Rugs
- Upholstery
- BBQs
- Freezers



☎ 01525 22 19 22 or 0800 122 3393

🌐 www.ecotechovenandcarpetcleaning.co.uk

@ info@ecotechovencleaning.co.uk

Dominic Woolcott

Painter & Decorator



- Internal & External
- Plastering & Coving
- Insurance Work
- 20 Years Experience
- Competitive Rates

**For a professional job call:
01525 229682 or 07747 042879**

P. DYER ELECTRICAL

For all your Electrical & Testing & Inspection needs

- Re-wires
- Testing & Inspection
- Security Systems/Lighting
- LED & Low Energy Lighting
- CCTV Systems
- PAT Testing
- Fuse Boards
- Fault Finding/Repairs

Fully insured, Part P registered, all work guaranteed.
Fast, friendly, reliable, local electrician. For a free,
no-obligation estimate, call Paul on:



Tel: 01525 222109
Mobile: 07850 682815



David John Harris
Green Fingers
(Established 1992)

All Fencing Work • All Gates • Paving • Patios
Driveways • Shingle • Hedge Setting and Cutting
Grass Cutting • Turfing Specialist • Exterior
Painting Service • Sheds Small Building Work
Trees & Shrubs Supplied

Tel/Fax: 01525 221745
Mobile: 07889 143713

Barry Cato
Motor Repairs
Est. 1981

Servicing, repairs and MOT's arranged

Workshop at:
r/o Norfolk House Farm, Harling Road
Eaton Bray, Dunstable, Beds, LU6 1QY

Tel: 01525 221681 (workshop)
07836 650015 (mobile)

 **GYM & TONIC**

WANT TO GET FIT, HAVE A HEALTHIER LIFESTYLE & IMPROVE THE WAY YOU LOOK & FEEL?

The following can be provided in our Gym in Edlesborough or in your home

*** A Health & Fitness Consultation ***
*** Personal Training * Massage ***

Ruth Webb Dip. PT & ST, Member of: Inst of Sports Therapists & Register of Nutritional Therapists

Tel:01525 223074 Mob:07812 163979

D NICHOLSON
PLUMBING REPAIRS
and **INSTALLATIONS**
NO JOB TOO SMALL

• Emergencies • Free Estimates
• No call out charges

Dave Nicholson

MOBILE: 07976 975604
HOME: 01525 872335

City & Guilds Qualified

For all your building needs look no further



BRIGGS

BUILDING & CARPENTRY SERVICES

Established 1981



For a professional, friendly service call:

(01525) 221767

(07970) 214439

Domestic & Commercial

Extensions

Alterations

Patios

Renovations

Kitchens

Decking

Conversions

Driveways

Garden Walls

Narrow access mini digger, skip loader
and dumper services available

All Work Guaranteed

Free Estimates



Flicks & Bangs

HAIR SALON

A warm, friendly salon offering a wide range of bespoke hair services for all the family. Feel free to pop in for a complimentary consultation.

www.flicksandbangs.com

Flicks & Bangs

66 High Street
Eaton Bray
Nr. Dunstable
Beds LU6 2DP

01525 221252


Opening Hours

Mon Closed
Tue 9 am - 5 pm
Wed 9 am - 5 pm
Thu 9 am - 8 pm
Fri 9 am - 7 pm
Sat 8 am - 4 pm
Sun Closed



Pinstripes **signs**
HAVE MOVED
 12 HARMILL IND EST
 GROVEBURY ROAD
 LEIGHTON BUZZARD
 BEDS LU7 4FF
COME AND VISIT US
 SIGNS-GRAPHICS-CLOTHING
 VANS-SHOPS-BANNERS-BUSINESS CARDS
 BOARDS-STICKERS-CANVAS PRINTS
 MAGNETIC CAR SIGNS-WINDOWS
01525 851080
07973 167779
www.pinstripessigns.co.uk
 Join us on Facebook - Pinstripes Signs Graphics Clothing

WASHING MACHINE REPAIRS
 ALSO
 DISHWASHERS, TUMBLE DRIERS,
 AND ELECTRIC COOKERS



Call
ANDERSON D.R.S.
01582 665764
www.andersondrs.co.uk
 SALES AND RENTALS AVAILABLE

Lee Hutt 
 Heating & Plumbing Services

Bathrooms
 DESIGN & INSTALLATION
TILING
HEATING
TAPS
Leaks
CALL OUTS
Free Estimates



 01525 222145  07971 559185

Patricia's Cuisine
 Catering For All Occasions

- Buffets, Dinners •
- Christenings, Weddings, Funerals •
- Promotions & Business Lunches •

For Enquiries & Menu
 Meadside Farm, 104 High Street,
 Eaton Bray, Bedfordshire, LU6 2DP
Telephone: 01525 222174



P.J.BRINKLOW
Electrical Contractor
01525 220469
07860 781330
43 Pebblemoor
Edlesborough

*“A wonderful
place to be!”*



Eaton Bray Academy



Tel: 01525 220468

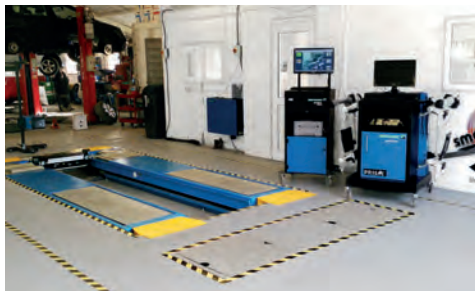
Email: admin@eba.ec

www.eatonbrayacademy.co.uk

smartAUTOGROUP

ESTABLISHED LOCALLY FOR 14 YEARS

Fully equipped Car Bodyshop, Service Workshop
& MOT Bay



- New MOT Bay
- 4 Wheel Alignment & Tyre Fitting
- Specialists in Complete Classic Car Restoration
- Dealer Trained Technicians
- Ford, Vauxhall, VW, Audi
- Extensive Experience in Prestige Car Paintwork and Repair
- One-Stop-Shop for all your Servicing, Repairs, Bodywork & Maintenance
- Accident & Vandalism Damage
- All Insurance Work Undertaken - We can also cover your Excess and provide a Courtesy Vehicle (subject to T's & C's)
- Mobile Car Body Repairs – Fully Equipped Vans that come to your Home or Office.
- Alloy Wheels – Dents - Bumpers – Chips – Scratches - Scuffs
- Free Collection and Delivery, Loan Cars and Lifts when required

We pride ourselves on always being competitive for the right job.

**£10 OFF WITH
THIS ADVERT**



Call us on **01582 664772** or visit **www.smartautogroup.co.uk**

Units 17 & 18a, Icknield Way Farm, Tring Road, Eaton Bray, Dunstable LU6 2JX



Transport St Mary's Village 1st July 2017 Carnival 2017

Carnival is now only a month away on 1st July, so this is probably the last Carnival Focus article many will see before the event. If you want to be involved now is the time to do it! The Carnival Website and contact details are towards the end of the article.

Carnival Queen 2017

This year's Carnival Queen, Princess and attendants were chosen by draw on Sunday 9th April. We named them in last month's Focus and here they are.



Carnival Queen - Chloe Oastler

Carnival Princess - Isabella Lee

Attendants: Lucy Celine & Grace Dixon

The girls will be leading the carnival procession on the day in a suitably elegant form of transport.

Carnival Procession for ALL Families

This is final reminder before 1st July that this year there will be, once again, a category in the procession for all FAMILIES. This opens up the carnival procession to anyone who wants to have a go!

Remember there is also the house decoration competition along the procession route. Having trouble with transport? Here are a few ideas.

Ideas for Transport

Aircraft, ambulance, armoured car

Balloon, barge, barrow, battleship, bobsled, broomstick, bulldozer

Cable car, caravan, chariot, conveyor belt, crane

Destroyer, dinghy, dogsled, dumper truck Electric car, elevator, escalator

Fire engine, forklift, freight train Galleon, glider, go-cart, gondola

Helicopter, hovercraft, hot rod, hydrofoil Ice breaker

Jeep, jet ski, jumbo jet Kayak

Lifeboat, limousine, locomotive, lorry
 Magic carpet, minesweeper, motorcycle, mountain bike
 Narrowboat, Nautilus Oil tanker, ox cart
 Parachute, police car, punt Quick feet!
 Raft, rickshaw, rocket, rowing boat.
 Scooter, sea plane, ski lift, sledge, snow mobile, space craft, submarine.
 Tank, tractor, tram, train, trawler, tricycle, tugboat U-boat, unicycle
 Vespa. Wheelbarrow, warship
 Yacht. Zeppelin, Zamboni (ice rink resurferer!)

Surely you can make something out of that for the procession or your house.

An Ongoing Appeal to Local Businesses and Organisations

Once again this is an appeal to local businesses as well as schools, youth groups, and organisations to get involved in the Carnival and have your organisation promoted during this event. The ever increasing foot print of the Carnival, with visitors from Aylesbury, Milton Keynes, Dunstable, Luton and Hemel Hempstead, is an ideal vehicle for promoting your business. As an organising committee we can work with you to find the best means of advertising your businesses to the crowds who attend the Carnival if you give us a chance to do so. Here are a few ways that the Carnival could work for you:

Advertising in the arena

Have a float in the Carnival procession

Have a stall at the Carnival

Donating a prize for the Grand Draw

Donating a prize for the Silent Auction

All details of Carnival 2017 including how to book a stall, arrange advertising, offer prizes and much more can be found on the Carnival website:

www.stmarysvillagecarnival.com

Can You Donate A Prize or Your Time?

The Carnival Committee is always looking for people who can help in a variety of ways:

Manning stalls

Helping in the tea tent

Driving a vehicle

Acting as a marshal for the procession

Supervising the car parking

Picking up litter

Baking cakes

Tossing a sausage at the BBQ

There are other ways of supporting the Carnival by donating equipment, money or prizes for our Grand Draw, Silent Auction and Tombola. For those with green fingers perhaps you could take a few cuttings and donate to the successful plant stall.

As vital as these activities is help with bringing equipment to and from the Green before and after the event. It's never too late to offer your help for this year. Whether you can spare an hour or all day to help we can find something for you to do and I can assure it's as much of a hoot spending an hour or two at a stall or meeting new people setting up the carnival as it is attending the event itself!

For any specific questions or if you would like to get involved with organisation of the carnival either by helping for a few hours on the day or providing assistance in the coming month contact Gordon Gray on 01525 220136 or through the carnival website above.

Church of St Mary
the Virgin, Eaton Bray,
Dunstable LU6 2DP

Saturday 8 July
7pm

Let's Hear It For the Girls

A summer's evening of musical entertainment
presented by

Emily Haig Soprano

Karen Logan Mezzo Soprano

A varied programme of classical and musical theatre favourites

Tickets: £10 adults / Children free

Please contact: Pat Haig: pathaig@me.com

07771 702136 / 01604 463492

www.emilyhaigsoprano.co.uk

14th Eaton Bray Village Hall

Beer and Cider Festival

Friday 9th June/Saturday 10th June



30 Real Ales + 2 ciders and 2 perrys

Soft drinks, lager and wine available

Hot food/BBQ available All day

Live entertainment: Friday night - Jerome Chance

Saturday afternoon, 2.30pm, Family Magic Show

5pm The Dicemen

Saturday evening - Tony O'Malley

Fri - mid-day till 11pm, Saturday mid-day till 11pm

Entrance £3 by raffle ticket

Free to CAMRA members with card proof



Edlesborough Parish Council News

Including Edlesborough, Dagnall and Northall

The Annual Parish Meeting for Edlesborough

Thames Valley Police Report

PCSO Jackie Dodson reported the following crime figures:

- Burglary – 15 in total, 11 in Edlesborough, 1 in Northall, and 3 in Dagnall,
 - 4 x Burglary dwellings in Edlesborough have had 2 suspects charged with the offences I believe they are awaiting trial for these.
 - Burglary other - Edlesborough 9.
 - Criminal Damage - Edlesborough 5, Northall 2.
 - Theft - Edlesborough 5, Dagnall 3.
 - Theft of Motor vehicle - Edlesborough 3, Dagnall 1.
 - Theft from Motor Vehicle - Edlesborough 7, Dagnall 2,
 - Vehicle Interference - Edlesborough 3, Northall 1, and Dagnall 1.
 - Numerous traffic offences, of which 35 x driving offences were dealt with for the whole parish.
 - 1 x Possession with intent to supply class A - Suspect arrested and charged, awaiting trial next month.
 - 2 x Possession of a class B drug – 1 x Fined at court, 1 x cannabis street warning
- Council & PCSO Dodson discussed the recent anti-social behaviour on Edlesborough Village Green and in the car park at Edlesborough Surgery. PCSO Dodson will increase patrols of these locations.

Chairman's Report

The Chairman gave a 'PowerPoint' presentation of the Council's various activities during the year including:

- Implementation of Bucks CC Devolved Services
- Catch up on activities neglected by BCC
- New Website
- Edlesborough Parish Neighbourhood Plan which was submitted to AVDC on 6th April 2017
- New Pavilion
- Defibrillators
- EMH Acoustic Improvements
- Edlesborough Green Play Area Improvements
- The refurbishment of the roundabout

Plans for 2017/18

- Neighbourhood Plan – approval & referendum
- Unitary Authority -implications for the Parish Council
- More Devolution?
- New Pavilion

EDAN Parish Plan – Team Status

Beautification Team:

- Beautification of the villages
- Litter picking

- Enhancing the War Memorial with planting
- May Day Car Boot Sale

Traffic Management Team:

- Successful Campaign to downgrade the A4146 to the B440
- Implementation of HGV limits are still being considered by Bucks. Beds & Herts will be implementing them.
- New video speed capture system sites approved by TVP
- It is planned to deploy the video speed capture system monthly in each of the three villages

Friends of the Church on the Hill

- Plans have been submitted for opening the tower to visitors
- Plans have been reviewed for the installation of toilets and a kitchen at the church
- Edlesborough Church is now included in formal tours by The Churches Conservation Trust
- Edlesborough Festival 16th & 17th June

Community Car Share Scheme

- This is currently very successful however more drivers are always welcome, anyone interested should contact Viv Hill on 01442 842623

Cllr Williams thanked the Cllrs, District & County Cllrs, PCSO Dodson, the Clerk and the many volunteers who aid the Parish Council throughout the year; including the Neighbourhood Plan Steering Group and Villages Teams, EDaN Teams, Allotment Wardens, Charity Trustees and the parishioners who help to keep the village tidy.

Highlights of EPC’s Ordinary Meeting April 2017

New Councillor for Dagnall

EPC are very pleased to welcome Mr Alan Green to the Parish Council. Cllr Green will be representing the Ward of Dagnall with Cllr Mineikis who previously represented Dagnall will now represent Edlesborough.

Edlesborough Green Play Area

Due to the unseasonably dry weather the older section of the play area currently remains closed. This section will be re-opened once the new grass is sufficiently established. A new hydraulic hinged gate has now been fitted to the play area.



Grass Box on Edlesborough Green

EPC have installed a new grass/compost box on Edlesborough Green near the cricket nets. This box will be used for the cricket square cuttings.

Advertising within the Parish

EPC reminds residents and local business that the placing of advertising boards on the pavements and grass verges around the parish is forbidden. Bucks CC have devolved the monitoring of this to EPC. Advertising boards placed on pavements are hazardous to pedestrians, pushchairs and wheelchairs and can hinder driver’s visibility. BCC also deems advertising boards placed on the grass verges as fly tipping. Repeat offenders will be written to, if after seven days the boards have not been removed EPC will remove the boards.

Any local business wishing to advertise on a planter in the villages should contact

Christine Yates on 01525 220739.

Streetlights

Please report failed streetlights in Edlesborough, Dagnall and Northall to the Clerk for repair.

When making a report please ensure you provide the Clerk with the information displayed on the lamp post.

Allotments

Edlesborough Parish Council currently has vacant allotments at the Cow Lane site. Anyone wishing to take on an allotment should contact the Clerk. Fees are £2 per pole and plots range in size from 10 – 20 poles.

Speedwatch

The EDaN Traffic Management team are looking for volunteers to help with their new Sentinel device. If you have an interest in slowing down traffic in the villages or are concerned about Road Safety, please contact Louise Turner on 01442 843123 or by email at louisefanthorpe@yahoo.co.uk



Edlesborough Parish Council Meetings

The next Edlesborough Parish Council Meeting will take place as follows:

All Saints Church, Dagnall, Thursday 15th June 2017.

The meeting will commence at 7:30pm.

All Parishioners are welcome to attend all ordinary Parish Council meetings and may ask questions, raise issues and give suggestions during the Open Forum before the formal start of the meeting. The full minutes of the Parish Council meetings are normally available to view on the website or from the Parish Clerk.

To keep up to date with the latest information on the Neighbourhood Plan, Planning Applications etc. please visit the Edlesborough Parish website and to look out for day to day events visit our Facebook page.

Edlesborough Parish Council Contact Information:

Clerk: Miss Penny Pataky *Office hours Mon – Fri 10.30am – 2.30pm (Excl. Wed)*

Email: clerk@edlesborough-pc.gov.uk 01525 229358 Website: www.edlesborough-pc.gov.uk

Facebook: www.facebook.com/EDANParishCouncil

Wednesday Club Age Concern Northall

We require a volunteer driver and a conductor for our mini bus on one Wednesday each month to transport our members to and from Northall hall. It will require 2 hours in the morning to collect and again 2 hours in the afternoon to return members home.

Full support training will be give for both positions, which are both important to the running of the club.

Interested.... please call Peter Barrow on 01442 842364 or Ken Coates 01525 220868.

town&country

in association with **FINE & COUNTRY**
fineandcountry.com™

Town & Country are delighted to announce the opening of their latest office in the village of Edlesborough, covering the local Villages including Eaton Bray, Northall, Totternhoe and Dagnall.

We are a local independent agency that has been successfully trading across Herts, Beds and Bucks for nearly 20 years. Our other offices are situated in Caddington, Markyate and Redbourn. We specialise in residential sales and lettings of all values in local rural communities.

For a personal service from an experienced team of staff who always go the extra mile, please contact our office for all your home moving needs. We look forward to working on your behalf in the near future.

Mark Bristow
Managing Director



Tel: 01525 222 333 | Email: edlesborough@towncountry.uk.net

ASPECT

YOUR LOCAL ELECTRICIAN
TOTTERNHOE
OVER 20 YEARS EXPERIENCE

ELECTRICAL

CONSUMER UNIT UPGRADES (FUSE BOARDS)
LIGHTING - INTERIOR, EXTERIOR & SECURITY
REWIRING
NEW INSTALLATIONS
TESTING & INSPECTION

ALL WORKS TO CURRENT WIRING & BUILDING REGULATIONS
PART P CERTIFICATED & FULLY INSURED



CALL STEVE ON
07976 283969 / 01582 665068
aspect@sparky.me



Edlesborough Flowers

Flowers, Gifts, Jewellery
& More...

2 High Street,
Edlesborough,
LU6 2HS
Tel: 01525 221920

Anne Johnson D.O. Registered Osteopath

6 Moor End,
Eaton Bray

01525 221958
07957 250682



R.J.O'CONNELL BUILDING SERVICES

EXTENSIONS, PATIOS,
DRIVEWAYS, ROOF REPAIRS
AND PROFESSIONAL
DECORATING SERVICE

TEL: 01296 681323
MOB: 07855 236726

Will Kimberley Garden Services 01442 255784

Phone for a free no obligation written estimate
wkgardenservices@btconnect.com

- High hedges a speciality
- Fences erected and repaired
- General garden tidy up's
- In fact any job in the garden!

EXCEEDING EXPECTATIONS IS JUST PART OF OUR SERVICE



If you're **selling**, **letting** or **buying** a home, make it happen with your local estate agent



01525 220605 • info@giblinproperty.co.uk
www.giblinproperty.co.uk

THE WORKTOP SPECIALIST

DELIVERING OUTSTANDING QUALITY & SERVICE FOR ALL YOUR WORKTOP & JOINERY NEEDS FOR OVER 50 YEARS

- FREE HOME MEASURING SERVICE
- CUTTING & EDGING SERVICE AVAILABLE
- VISIT OUR BRAND NEW SHOWROOM

Abbey Gate, Boscombe Road,
Dunstable, Bedfordshire, LU5 4FA

Tel: 01582 668 973 Fax: 01582 608 227
Email: sales@dunstablelaminates.co.uk
Web: www.dunstablelaminates.co.uk



@DLaminates



Dunstable Laminates



Misty Double Glazing?

Over 30 Years experience. FREE Quotes

Over 30 Years experience. FREE Quotes

**KEEP YOUR WINDOW FRAMES...
... WE JUST REPLACE THE GLASS!**

- UPVC • Aluminium • Or Wood

Because we replace just the glass the repair is a Fraction of the cost of a complete replacement window.

BEFORE



AFTER



mistydoublinglazing.co.uk

QUALITY GLAZING SERVICES

01525 876808

WE ALSO REPLACE BROKEN...

- Glass • Handles • Hinges & Locks
- AND REPAIR...Patio Doors & Conservatories!**



Café masala

Exquisite Indian Cuisine

We Cater for Office or Private Parties and don't forget to try our Sunday Buffet

10% Discount on all Takeaway Orders Over £12

Fully Licensed & Air Conditioned

Open Seven Days a Week

Hours: 12 Noon to 2.30pm & 6.00pm to 11.30pm

Tel: 01525 22 22 64

63 Bower Lane · Eaton Bray · Dunstable · Beds · LU6 1RB
email: taraque@hotmail.co.uk · www.cafemasala.com

alto window cleaning

For a professional service.....

- Window cleaning
- Conservatory cleaning
- Fascia & gutter cleaning

07876 594186

AARON FENCING

ALL TYPES OF DOMESTIC & COMMERCIAL FENCING & DECKING WORK UNDERTAKEN

FREE ESTIMATES
FULLY QUALIFIED & INSURED
PERSONAL SERVICE AT COMPETITIVE PRICES

TEL: 01582 665779
MOBILE: 07798 927272

7 STATION ROAD, DUNSTABLE, LU5 4HS

Buy Direct From Our Own Farm

Master Card

VISA

From Ivinghoe Turf

- Commercial & Domestic
- Small Orders Welcome
- Bark, Grass Seed & Fertiliser
- Laying Service
- Discount on Larger Orders
- Screened & Blended Topsoil
- All Year Availability
- Forklift Delivery Available



ROLAWN[®]
Approved Rolawn
Stockist

Family firm farming since 1949

ALL AREAS

Freephone :

0800 043 5061

www.ivinghoeturf.com

The Bungalow, Vicarage Farm, Ivinghoe, Leighton Buzzard

Established over 20 Years

Duncan Tomblin TREE SURGEON

Forestry Contractor • Tree Felling
Crown Reduction & Thinnings
Deadwooding • Hedge Cutting
Stump Grinding • Site Clearance
Private Agriculture Fencing Contractor
Chipper & Stump Grinding Hire
Digger Hire

FULL PUBLIC LIABILITY INSURANCE
FREE ESTIMATES

'The Best Choice For Your Tree'

TEL: (01525) 221946
MOBILE: (07802) 410728

12 Greenways, Eaton Bray, Beds

ARC Contract Services Ltd

- Painting & Decorating • Plastering
 - Wall & Floor Tiling • Door Hanging
 - Bathroom & Kitchen Installations
- 20 years experience

All work guaranteed and fully insured

Call Adrian : 01582 539179

Mobile : 07789730580



WESTROPE BROS.

LAWN MOWER SERVICES

ALL TYPES OF GARDEN MOWERS SERVICED

THE RYE, EATON BRAY

Tel: Eaton Bray 220587

Gas Boiler Servicing

Over 40 years experience

Have your boiler serviced by a **Gas Safe**
and **CORGI** registered engineer

Other services available:

Maintenance, repair and installation of all domestic gas appliances including LPG. Boiler installations, Landlord Safety Certificates and Power flushing.

Free Quotes, no call out fee, and free friendly advice on all of the above.

Edwards Gas & Heating Services

Eaton Bray



Tel 01525 220626

www.edwardsgasandheating.co.uk
stevethegas@orange.net



Vicky

The Dog Grooming Specialist
www.vickysdogcare.co.uk



With a reputation for offering an exceptional personal service



- Over 29 years of professional experience
- Trained at the London Academy of Professional Groomers to the highest City and Guilds standard
- Dorwest Veterinary Trained
- Member of the Pet Industry Federation
- Sympathetic and gentle handling of all dogs
- **FREE** Health check with every grooming session
- **No cages used! No cage dryers!**
- One to one personal attention.....loads of TLC

Where Dogs Come First!



Mobile: 07796 445416

Telephone: 01525 222775

Email: enquiries@vickysdogcare.co.uk



Committed to the highest standards of animal welfare and customer care

Desktop Publishing

Magazine, Book, Brochure, Leaflet, Presentation, Advert
Design & Layout

PC Support and Guidance

PC Repairs
Home & Office Network Guidance & Setup

Digitising

Scanning of Photos & Documents, Slides, Videos, Archiving
Photo Repairs

Data Integration & Manipulation

Sharing data between applications
Automation of applications i.e. Excel Macros
Databases, Templates, Record Maintenance

01525 229695 (Edlesborough)

Email: enquiries@morenassociates.co.uk

www.morenassociates.co.uk

Absolutely Plastered

DOMESTIC/COMMERCIAL,
CLEAN AND RELIABLE SERVICE,
FREE ESTIMATES, FRIENDLY ADVICE



- * Plastering & Coving
- * Floor Screeding
- * Pebbledashing & Rendering
- * Dry Lining
- * Cornices & Mouldings
- * Insurance Work Undertaken

CALL NICK CONWAY ON

Mobile: 07751 830716

Tel: 01296 688981

6 Cotes Way, Wing, LU7 0RB



HCPC Registered

Practice in Luton

Surgery open 6 days

www.johnstonstltd.co.uk

Ms Johnston

PODIATRIST - CHIROPODIST

For home visits phone

07981 749038

Stuart Ball
Ceramic Tiler
Specialist
at all aspects of
Wall & Floor Tiling
Over 33 yrs Experience
01525 229381



Stephen D. Janes

(Established in 1982)

**CARPENTRY, JOINERY
KITCHENS FITTED
PROPERTY MAINTENANCE
TELEPHONE: 01525 220649**

G & J Groundwork & Landscapes

Driveways & patios
Free estimates

07949 118011
01582 477568

Garry Tearle



Neil Hodson Associates

*BUILDING DESIGN
STRUCTURAL ENGINEERING*

**PROFESSIONAL BUILDING DESIGN,
ADVISORY AND DRAWING SERVICES**

From plans for domestic extensions
to multi-storey offices, commercial
buildings and factories.

Structural surveys, site surveying,
advice on building defects and
Feasibility Studies

Planning Applications and Building
Regulation Consents obtained.

**24 HIGH ST TRING
Tel 01442 890894 OR
Edlesborough 222462**

J Able bathrooms

DESIGN

Free CAD design of your bathroom. This will give you a photo realistic finished plan of your design.

SUPPLY

Come and browse our display suites. This will help you decide on the perfect bathroom for your needs.

INSTALLATION

Our installations are of the highest standards!
We take pride in making you delighted with the finished result.

We have suites in a wide range of styles to suite your budget.
Ring to make an evening appointment at the showroom
or a home visit at your convenience.

T: 01525 220043 M: 07891 449077

3 Summerleys, Edlesborough, Buckinghamshire, LU6 2HR
W: www.jablebathrooms.co.uk E: ableplumbing@hotmail.co.uk



EDLESBOROUGH TENNIS CLUB

Come and play tennis with us on carnival day

The courts on the green will be open with racquets and balls provided and on that day only, we are offering a fantastic half price membership deal to all new members.

We'd love to see you there....

Contact us on enquiries@etctennis.org or look at our website www.etctennis.org or our facebook page

Eaton Bray W.I.

Deirdrea welcomed the members to the May meeting, where birthday cards and greetings went to Ros, Wendy, Mary and Deirdrea.

After the business details were discussed, it was time to consider, discuss and vote on the two Resolutions, which would be presented at the National AGM in June.

1. Encouraging the Government and Industry to keep microplastics out of our oceans, impacting on aquatic life. Margaret Jones gave outlines on this topic and various aspects were discussed and voted on.
2. To raise awareness of loneliness and take action to support people who may be chronically lonely. Pat Carter outlined categories of those who could be lonely and why.

The four local villages are well served by a Good Neighbour Scheme, Age Concern, various Parish Lunch Clubs, Sick Visiting and the other various organisations, all servicing the needs of the community.

It is in the towns and cities that there is more chance of people feeling lonely and vulnerable both emotionally and socially and where a great deal of help is needed.

For the social part of the evening, each member produced a photograph and told of the importance of it in their life, from places of interest, treasured family photos, WI photos and

photos of challenges undertaken.

Members had earlier written and put into a box, two details about aspects of their lives. When read out later, it became a guessing game of "Who am I?"

This proved to be so informative and interesting, as each one regaled stories of circumstances and happening in their lives. So many unknown details were disclosed to the group, which made fascinating listening and we all learnt a little more about each other, which made the group feel much closer. This was a very special evening for us all.

This was followed by tea and a tasting of various cakes made by the members and the recipes were purchased for 10p towards the funds. What lovely bakers our members are--move over Mary Berry.

The next meeting is on Monday 5th June when the speaker will be Victoria Diggle on History of the National Garden Scheme, with photos.

Members were reminded that Monies for the Afternoon Tea at Poplars were due.

An afternoon outing to Ascot House with tea, in August was suggested, a date to be advised.

The evening closed with the raffle.

theWI
INSPIRING WOMEN

ILLUSTRIA

Kennels & Kathotel

Offering your pet a fully licensed Dog and Cat boarding service.

Purpose built Dog kennels

Individual Cat chalets with outdoor exercise runs

All in pleasant country surroundings

01582 ~ 665343



ILLUSTRIA
Springfield Road
Wellhead
NR Dunstable Beds
LU6 2JT



Proprietors

Mick, Denise and Michele Garrod



Live a healthy & active life

Free 10 minute advice chats with our Chartered Physiotherapists & HCPC Registered Podiatrists

PHYSIOTHERAPY
PODIATRY &
CHIROPODY
PILATES
ACUPUNCTURE
SPORTS INJURIES
MASSAGE
WOMEN'S HEALTH
& PREGNANCY
CARE

St. Judes
physiotherapy, health and well being

01525
377751 
enquiries@stjudesclinic.com
www.stjudesclinic.com

N.D.S.

General Building & Plumbing
(25 years experience)

- Roofing; Installer of UPVC guttering, soffits & fascia boards
- Kitchens & Bathrooms fitted
- Property Maintenance
- Fencing • Patios & Block Paving
- Gazebos • Garden Structures

Tel: 01525 221470

Mobile: 07946 626564

FREE ESTIMATES

...

**ALL WORK CONSIDERED
NO JOB TOO SMALL**

For a top quality
decorating job call

Marc Flack

01525 223166

Trading locally for 10 years
References are available



TIME TO MOVE?

**Don't be alarmed,
we're here to help!**

Established in 1999

e: info@plummproperty.co.uk

Five Good Reasons to use **Plumm Property**

Pprivate Offices - direct savings to you on fees

Local Knowledge - from our highly experienced team

Unrestrictive contracts - no lengthy tie-in periods

Marketing to outside area - attracting London buyers

Managing all your needs with a 1st class professional service

From Offer through to Completion of Sale



01296 660230

www.plummproperty.co.uk



HIGHLIGHTS OF THE MINUTES

A full/detailed copy of the minutes for Eaton Bray Parish Council can be found on our website.

A hard copy of the minutes can also be viewed on the Parish Council's notice board at The Coffee Tavern.

Meeting of Eaton Bray Parish Council

Held on Monday 3rd April 2017 from 7:30pm at the Coffee Tavern

Central Bedfordshire Council (CBC) – Councillor Ken Janes email kwjanes@hotmail.co.uk / 07767-496823

CBC Website: www.centralbedfordshire.gov.uk / CBC Email: customers@centralbedfordshire.gov.uk / CBC Customer Services: 0300 300 8302

Consultation – Parking Strategy: Central Bedfordshire Council

Central Bedfordshire Council are consulting on parking, the consultation will be open for feedback until the 16 June 2017. Parking is an important issue when considering transport topics. Central Bedfordshire households have a higher than average number of cars or vans, all of which need parking. A well planned and managed approach to parking can have a positive impact on local businesses and people's quality of life. However there is a challenge, often there are more vehicles than spaces to park, which causes problems. CBC is proposing to introduce a new set of policies that set out a framework for how it will provide for, manage and make decisions about parking for residents, shoppers and commuters. The results of the consultation will help to form a draft Parking Strategy. When this is adopted, feedback from local area assessments in key towns will be used to understand if there are any areas in Central Bedfordshire where parking needs to be improved, at which point there will be further public consultation. The consultation document / response form available online, paper copy available in CBC's libraries, Priory House and Watling House reception. Online link: www.centralbedfordshire.gov.uk/consultations .



Bedfordshire Police: Your Local Policing Team: **Non-emergency call 101 / All emergencies 999**

Vacancies - Parish Councillors

There is a vacancy for a Parish Councillor on Eaton Bray Parish Council.

Being a Parish Councillor in Eaton Bray Parish gives you a real opportunity to make a difference to the community. Interested? Please email the Parish Clerk (see contact details below) with a brief summary about you, your skills and why you would like to be a Parish Councillor. Visit the Parish Council website <http://www.eatonbray.com/parish-council/parish-councillor/> to find out more on becoming a Parish Councillor.

Eaton Bray – Neighbourhood Plan

Keep your eyes on the Parish Council web site and Facebook page for more information. If you feel you can offer any support please come along to our meetings. However support doesn't need to be attending monthly meetings, perhaps you have the time to help with data collection/research. Contact the Parish Clerk at www.ebpc.co.uk - please feel free to attend the next Steering Group meeting. Meetings are planned for the last Monday of the month at 19.30hrs at the Coffee Tavern, Eaton Bray.

Vehicle Parking

It has again been brought to the Council's attention the problem of poorly parked cars within the parish - parking on public footpaths, blocking access for pedestrians, causing obstruction and parking opposite junctions. Parking on the pavements/blocking junctions is a highways offence and enforceable with a fixed penalty notice. It is also dangerous to those who have to walk out onto the road to pass the vehicle and for those using hazardous junctions. The Council request that vehicle owners do not park their vehicles on the pavements or park opposite junctions. The Police will be informed and enforcement action taken.

Next Parish Council Meeting Date:

Monday 5th June 2017 from 7:30pm held in The Coffee Tavern (1st floor)

**THINK
BEFORE YOU
PARK!**



Heidi Head, Parish Clerk & RFO

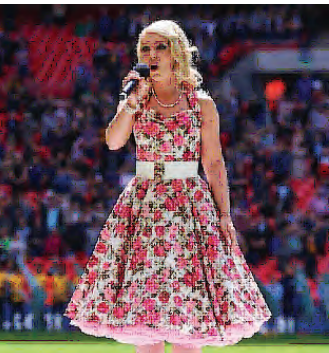
Email: clerk@ebpc.co.uk - Telephone/Fax: 01525 221464 - Website: www.ebpc.co.uk

Office Hours: Tuesday/Thursday/Friday 09:30-13:30hrs [messages can be left on answerphone]

Follow Eaton Bray Parish Council on Facebook and Twitter

Keep up to date with what is going on in the parish

Music@St Mary's Concert, Saturday 8 July, 7pm Let's hear it for the girls"



Here is a real treat for us all.

Planning is already taking place for this year's Poppy Prom in November at which we have invited as our principal soloist Emily Haig. She is becoming one of the UK's best loved sopranos: with the looks and style to go with it.

She has become Wembley Stadium's favourite soprano having been invited to perform the National Anthem on nine occasions on behalf of the Football Association and Football League, all of which were also broadcast live on both TV and radio to an audience of millions.

In 2016 she performed the anthems on behalf of Scotland and

Australia as part of the Rugby League Four Nations tournament, both of which were live broadcast on BBC and Radio 5 Live.

In April 2017 Emily was on the grid at Silverstone performing the National Anthem before the FIA World Endurance Championships, the UK first leg of the Le Mans racing series and in July will be opening the 2017 Formula 1 Rolex British Grand Prix grid on 16 July.

Emily has royal connections in 2016 she was invited to perform two tracks on a celebratory album recorded by Her Majesty's Royal Marines to mark the 90th birthday and long reign of Her Majesty the Queen and she was chosen to record two Royal lullabies specifically written for an album in honour of Prince George and Princess Charlotte. In March 2017 she recorded another anthem written specially for Emily commemorating Her Majesty's Sapphire Jubilee.

Emily will be joined at St Mary's by Mezzo Soprano Karen Logan for a joint concert entitled "Let's hear it for the girls". This is not one to be missed!

Tickets priced £10 (children free) from 07771 702136 / 01604 463492.

Eaton Bray Academy Pre-School Nursery

OPEN MORNING

Friday 9th June 9.30 – 11.00am



Are you looking for childcare for your pre-school aged child?

Eaton Bray Academy Pre-School Nursery offers the following:

- *Spacious purpose built facility*
- *Large enclosed outside play area*
- *Highly qualified Early Years staff*
- *Provision for children from 2 years old*
- **30 hour funding** and flexible hours for 3 and 4 year olds
- *Wrap around care from 7.30am – 5.30pm for 3+ years*

Please come along on **Friday 9th June** to see what we have to offer your child. We will be opening our doors to new families from 9.30am – please stay for a cup of coffee and a chat. All welcome!

For more information please see our website www.eatonbrayacademy.co.uk.

Eaton Bray Academy, School Lane, Eaton Bray, LU6 2DT.

Tel: 01525 220468, email: admin@eba.ec



Explore... Dream... Discover...

Travel Impressions are specialists in tailor-making holidays to destinations worldwide. If you are thinking of travelling to Canada, USA, Australia, New Zealand, Southern Africa, South America, Asia, India, Sri Lanka, China, Japan or within Europe, please call or email us.

We can help you create the best itinerary, as we offer:

Personalised planning - we take the time to get to know you • Friendly, honest advice from an independent travel agency
Extensive experience to arrange every detail • Using fully bonded tour operators • No booking fees



Travel Impressions

A World of Experience

01442 890265



enquiries@travelimpressions.co.uk
www.travelimpressions.co.uk

Suite 4, George House, 64 High Street, Tring, Herts. HP23 4AF

ADRIENNE'S PRIVATE HIRE

Call for a **FREE** quotation
Book early to avoid disappointment
Very competitive prices

Airport Transfers
& Private Hire

07980 039715

*Our executive Cars, 6 seater Minibuses and
lady driver are all available*



GRASS ROOTS GARDEN MAINTENANCE

TREE SURGERY, HEDGE PRUNING,
SELECTION SUPPLY AND PLANTING OF
TREES, SHRUBS AND HEDGES.
REGULAR MAINTENANCE/ONE-OFF JOBS
(Fully Insured)

Brian McMahon NCH (Arb)
01525 221960

CHARLES HILL

GARDEN SERVICES LTD
DESIGN | BUILD | MAINTAIN

LANDSCAPE CONTRACTORS

NCH Horticulture
City & Guilds Garden Design

A professional company working
with all your garden requirements
from design to complete landscape.

01525 242065

07773723236

www.charleshillgardenservices.co.uk
www.allyearroundbbq.co.uk



Sarah Munro

"Real, raw talent!"
Jamie Callum

A little taste of village live....
...the music festival
where Bucks meets Beds & Herts
June 16-17

2017
EdleFest



Kimber's Men
Traditional shanties
and sea songs



Starlight Barking
Sibling folk duo



Mary Holland
Mellow cello & rich vocals

2017
EdleFest

Line-up



Friday June 16

- Regina Whyatt
- Mary Holland
- Starlight Barking
- Kimber's Men + 'Kids'!**

Saturday June 17

- Regina Whyatt
- The Dicemen
- Emily Noithip
- Sarah Munro**

Each night: Early Bird Ticket £12 Adults/£10 Concessions
 On the door Ticket £14/£12 (subject to availability)
 Doors open 6.30pm : Music from 7.30 pm
 Tickets: www.ticketsource.co.uk/event/179056
 or locally from **Janes of Edlesborough** (cash/cheque)
 email: edlefest@gmail.com or call 07974 921923

Make sure you get yours going fast!

Licensed Bar, Great Music, Stunning Location -
 St. Mary the Virgin Church (on the hill) Edlesborough LU6 2EP
 Further details and videos of our artists can be seen on:

www.edlefest.site123.me



Edlesborough Festival

16th-17th June

Get involved in this year's 'Flowerfest'



We are inviting budding or experienced flower arrangers to join us in a workshop, guided by Kate from Edlesborough Flowers.

This year we are meeting at the church on the hill on Friday 16th June at 11.00 a.m. **This session is free of charge.**

Our aim is to fill the church with the fragrance and beauty of our freshly arranged blooms, visually enhancing this magnificent building for visitors to enjoy for the entire festival weekend. You are welcome to take your arrangement home after the Festival, or leave it to be sold. We will provide the mechanics and foliage. All we would ask you to bring are a few flowers from your garden, secateurs/scissors - and your enthusiasm! **Free refreshments.** Please contact chris@brooklyns.org.uk or call Chris Yates on 0152522073



Also - catch up with Kimber's 'Kids'...

Children from Edlesborough School and Eaton Bray Academy will take to the stage on Friday 16th June to amaze us with their new talent – singing popular sea shanties – learned at school and 'polished' during a short workshop led by international stars of stage and screen, Kimber's Men. We are sure the audience will be joining in the chorus.... Don't miss the fun!



Where Bucks meets Beds and Herts... a little taste of village 'live'

Come early to reserve your seat, have a drink (local ales, Pimms, a glass of wine, tea, coffee or a soft drink) and enjoy the spectacular views over three counties.



Our local MP, Rt Hon John Bercow, Speaker of the House of Commons, will once again be opening Edlefest

**Whilst in and around the villages and beyond - look out for our EdleFest flyer!
Find us on Facebook: Friends of the Church on the Hill, Edlesborough**



GET BACK INTO TENNIS THE EASY WAY

In just 6 weeks you can refresh your tennis skills in a fun, sociable way.

- **WHERE** Eaton Bray Tennis Club
- **WHEN** Wednesday 7-8:30pm
- **WHO** Beginners
- **CONTACT** Sara Leavy 07561571578

returning
**BACK
TO
TENNIS?**

learn how to
**SERVE
RALLY
SCORE**

with
**GROUP
COACHING**
and equipment
provided

www.tennis-xpress.co.uk



Friends Of Edlesborough School

Would like to invite you to their summer

Sponsored Walk and Family Fun Day

Please join us on Saturday 17th June for a family friendly walk around the village. Then enjoy a relaxing afternoon of live music, fun activities and delicious food.

There are two sponsored walk routes, a shorter one ideal for KS1 and a longer route for older children to enjoy. You may even prefer to run around the route! Whichever one you decide on all routes will end up back at the school grounds where you will receive a warm welcome. There will be live music, a bouncy castle, arts 'n' crafts and other fun activities for the children. There will be a BBQ serving posh burgers, beautiful desserts, refreshing Pimms and a beer tent.

If you would like to attend our summer event please contact chairoffoes@gmail.com for more information. We hope to see you there!



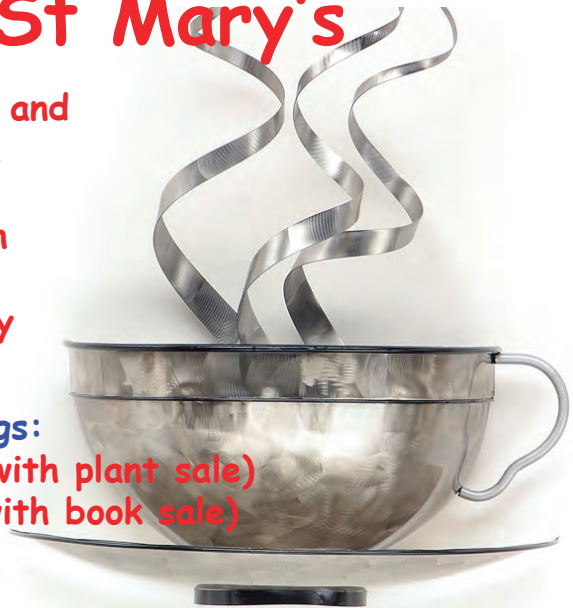
Come for Coffee at St Mary's

For a warm welcome and
a cheering cuppa
each month in
St Mary's Church
Eaton Bray
10.30am - midday

Next Coffee Mornings:

Saturday 3rd June (with plant sale)

Saturday 8th July (with book sale)



MARSWORTH

STEAM & CLASSIC

Vehicle Rally

Historic Steam Engines, Agricultural, Classic Cars, Bikes and Trucks

Sunday **18th** 2017 **June** 11am-5pm

Treat dad to a fun day out on Father's Day!



Family Entertainment, Rides and Attractions

Stalls galore!
Charity fundraising
Arena entertainment
Live music
Crafts
Working models

Face painting
Tring Fire Engine*
Steam Engine rides
Bouncy castle and slide
Kiddies fairground fun
and much more!

Ice Cream
Popcorn
Candy Floss
Fish & Chips
Teas, Snacks and
Homemade Treats
Beer tent
Local Real Ales

*Subject to duty commitments

Startop Farm
Marsworth HP23 4LL

Adults £5.00
Children £2.00

B489 Ivinghoe to Aston Clinton Road

All proceeds go to local fundraising and charities

www.MarsworthSteamRally.co.uk

Q&A with Tim, one of our Scouts

What age do I have to be?

Scouts is for boys & girls between the ages of 10 ½ -14. There are Beavers for anyone between 6 and 8, and cubs 8 to 10 ½ year olds. After Scouts there is Explorers for 14 to 18 year olds. After that you can be a leader or a helper, either every week or a few hours a month

What do you do?

We do many activities in the Scout hut such as indoor cooking and glow in the dark night, which is a group favourite. We also go camping several times a year, work towards activity badges, go on night hikes and wide games, do sporting activities such as climbing and we even have a float in the carnival. All of these events and activities are organised by our wonderful scout Leaders: Mark, Chris and James.



Are there any competitions?

In Dunstable District, which includes Dunstable and the villages nearby, there are many other Scout troops. We have District Events all year that all the Scout troops go to. All of the District Events that we compete in each year count towards the annual District Trophy. This year we won the Hat Challenge and the District Scout Quiz, came second in the Shooting and

St Georges Day competitions, and third in the cooking and Widgame. This meant that we won the District Trophy this year and had to go on stage at St Georges Day to collect the trophy!

Do you do things outdoors?

We're outside all year, doing things like hikes, cycling, camping, widegames, making fires, even if it's snowing!

Do you have to live in Eaton Bray or Edlesborough?

No, we've got Scouts from Northhall, Dagnall and Dunstable in our group

Where do you meet?

We've got our own hut in Edlesborough, next to the Village Hall. It's just had a new roof and windows, and been painted inside. It looks awesome now

Isn't Scouts a bit old fashioned?

No! We do traditional Scout stuff like knots and First Aid, but now there are new badges like Street Sports and Water Activities we can do in Scouts or with our family

Ready to Join the Adventure?

Find our contact details in the Village Diary section, or contact ebechair@ebescouts.co.uk for adult volunteering opportunities

LOCAL HERALDRY

BY JOHN HOCKEY

In this series, we take a look around local villages to find interesting and unusual heraldry.
HATCHING

This month we are straying far from our usual villages to the small country house of Stanway in the Cotswolds. The reason is that from my Edlesborough base I have been doing some heraldic research for James Charteris, 13th Earl of Wemyss and I came across a good example of what is known as ‘hatching’, which I thought I would share with you. The primary colours used in heraldry are lovely and clear, but what do you do if you want to show your coat of arms on stone or silver? Then you have to revert to a system invented by the 17th century Jesuit writer Petra Sancta. He developed a scheme whereby lines and dots indicate the colour or metal intended to be used. It is a sort of code which can be deciphered by looking at an explanatory chart. For example, vertical lines indicate ‘Gules’ or red, horizontal lines show ‘Azure’ or blue and dots are reserved for ‘Or’ or gold.



Dawson Arms



Portalrington Dish

Lord Wemyss has in his possession a silver-gilt rose-water dish which has the arms of Lieut.-Col. John Dawson in the middle, all conveyed by hatching. Without knowledge of the code for each colour, the design would be meaningless but with it all is revealed. You can see that the main body of the shield (the ‘field’) is composed of horizontal lines and so we may be confident it is meant to be ‘Azure’ or blue. Top left there is a square with vertical lines (for ‘Gules’ or red) with a star covered in dots (‘Or’ or gold). The more normal coloured version of the arms is also shown.

This dish was a gift after King George IV visited Ireland in 1821 and the welcoming party were tipped off in advance that the sovereign would be likely to need a very large privy (specially constructed) as soon as he reached the Curragh. The ‘superloo’ was built and all passed off without a hitch. The silver-gilt embossed dish was presented by a grateful host!

Next month: Dunstable



PROTECT YOUR HOME, BUSINESS AND BELONGINGS.



MJ Security is a local family-owned business with over 30 years experience offering the latest technologies in home and business security at competitive prices.

Specialist in:

- Intruder Alarms
- CCTV
- Access Control
- Maintenance
- And more ...



Call us today on **01582 665022** for a FREE survey.
Visit our website **www.mjsecurity.co.uk**

Don't wait until it's too late ...
MJ Security - for prevention, protection and peace of mind.



Some comments from our December 2015 Ofsted report:

Children learn good manners and know how to treat each other with respect.

Staff are consistently kind and caring and this supports children to develop confidence and resilience.

Teaching is consistently good and children's safety is given the highest priority.

We are a committee run playgroup operating five mornings a week 9:15 – 12:15 for children aged 2 to school age.

**If you would like to find out if your child would be happy here, please phone our Playgroup Leader, Ann Tobin on 07816 358 342.
www.dagnallunderfives.co.uk**



Friday June 9th and Saturday June 10th

I trust as you read this the sun is shining and the outlook for the 9th and 10th is just as sunny. This year we are holding the 14th Eaton Bray Village Hall Beer Festival. It really seems only yesterday that we held the 1st Beer Festival, but then I looked in the mirror and realised it was 13 years ago.

We have the usual suspects, 30 barrels of beer, 2 or 3 ciders plus some perry. These will be served by the trusty CAMRA guys, who also keep them all in tip top condition. Along with the real ale we also serve lager and wine for non-beer drinkers and of course soft drinks of various types. This year we see the return of our new caterers who were a great success last year.

Friday we have Jerome performing to his usual high standard to get us all in the party mood and then on Saturday we start with Smartie Artie (the best children's entertainer around) for those who are either young, or just think they are.

At 5pm The Dicemen give us their unforgettable interpretations of many songs, followed later by a newcomer to the Festival, Tony O'Malley. He will ensure we all go home happy.

Hope to see you all there

If you want any further information then please call me Ross on 221411



We are delighted that our quarterly review (Feb – April 2017) reveals a healthy and growing scheme. The total number of completed jobs rose by just over a third from 116 to 155, the largest proportion of the increase being in befriending activities. On only 3 occasions were we unable to meet requests for help and this was because

the people were out of area or gave less than 24 hours notice.

The Befriending Group arranged an enjoyable trip for clients to Dunstable Downs in April. The group of befrienders meets monthly and is enthusiastic to extend the support. There was a social event for the whole scheme in March attended by some 20 volunteers and clients who found it an invaluable opportunity to exchange ideas and experiences.

The Steering Group meets on a regular basis at approximately six-week intervals. It has just welcomed Heather Rathbone as the new secretary in the place of Elizabeth Wallace (formerly Chiles) who is standing down. Elizabeth's assistance and support in the setting up of the scheme have been invaluable.

We are always keen to attract new volunteers, especially people who would be happy to assist on the telephone helpline. This is not onerous and training is provided.

Dates for your diary:

Annual General Meeting Wednesday, 12th July 2017 at 7.15pm at The Salvation Army Hall. Refreshments will be served. All volunteers and clients are welcome.

Make your house a home with
blinds and awnings from

**VANSAR
BLINDS**



www.vansarblinds.co.uk

Find us on Facebook



- Free No Obligation Measuring And Quotations
- All Blinds Made To Measure
- Choose In The Comfort Of Your Own Home Or Workplace
- Family Run Business
- Large Range Of Quality, Affordable Fabrics And Colours To Choose From

01525 220477 or 01582 699565 sales@vansarblinds.co.uk



David Brown Window Cleaning

Quality Reliable Service.

Regular, Occasional or
Single Visits.

Friendly Free Estimates.

Facias, Guttering & Conservatories.

External Cleaning & Maintenance.

Fully Insured.

Phone 01582 472113
Mobile 07534 837073

McTimoney CHIROPRACTIC



Margie Craib BSc BHSI DC AMC MMCA
Human and Animal Treatments

Ashridge Farm, Ringshall, Berkhamsted, Herts HP4 1ND
Telephone: (01442) 842729

General Chiropractic Council Registration No. 293

Spinney Landscapes & Gardening Services

All Aspects of Grounds Maintenance

Weed Control • Driveways & Patios

Lawn Care & Scarifying • Fencing

Turfing • Tree Work

Snow Cleaning & Gritting

Tel: 01525 839622 Mob: 07876 500292

Email: spinneylandscapes@gmail.com

www.spinneylandscapes.com



Dagnall Church of England School

Courage
Friendship
Respect

Love Values
Koinonia
Responsibility

Dagnall School is a friendly, nurturing and fully-inclusive learning community, situated at the foot of the Chiltern Hills. We offer a unique, family feel where children benefit from small class sizes and personalised learning delivered by highly-skilled teachers.

We provide a secure and creative environment where children feel safe to take risks, to challenge themselves and to develop their love of learning as individuals.



Curiosity Creativity Community

Spaces available, to arrange a viewing please call Dagnall school:

01442 842473

or visit: www.dagnall.bucks.sch.uk

email: office@dagnall.bucks.sch.uk





GENERALMECHANICALSERVICESLTD
 VEHICLE SERVICING AND REPAIRS



**MOTs • MOT REPAIRS • SERVICING
 DIAGNOSTICS • TRACKING • AIR CONDITIONING
 TYRES • CAMBELTS • COLLECTION & DELIVERY
 WELDING & FABRICATION • BATTERIES**

All vehicles - all mechanical work!

1 HONEYWICK LANE, EATON BRAY, LU6 2BJ
 reception@general-mechanical-services.co.uk
 www.general-mechanical-services.co.uk



01525 222876



Centre of valid for motorists



HEIRLOOM

Café · Edlesborough

An artisan coffee shop showcasing exceptional coffees from our own coffee roastery. A seasonal menu of breakfasts, brunches, lunches & early dinners.

www.heirloom.cafe · info@heirloom.cafe

M . P . S

Maintenance & Property Services

- KITCHENS AND BATHROOMS
- PAINTING AND DECORATING
- PROPERTY RENOVATIONS
- PLASTERBOARDING
- FENCING

FREE ESTIMATES
NO CALL OUT CHARGE
NO JOB TO SMALL
LOCAL

Contact:- Julian

07958 306301

E-mail – mps@mustoe.co.uk
www.mustoe.co.uk

Leighton Aerials

Established 1970

For all your aerial
and satellite needs
call Colin on

01525 374742



Edlesborough School & Pre-School



Pupils' behaviour is outstanding...

The environment for learning is exciting and stimulating...

A real strength of the school is pupils' attitude to their learning .

Ofsted 2013

For more information about our School, Pre-School and Before and After School facilities, visit our website at www.edlesborough.bucks.sch.uk

Please contact the school on 01525 220431 to arrange a visit.

S M Reilly & Son Ltd

General Builders & Contractors



Turning Your House into
a Home Since 1987

All aspects of the building trade undertaken

- *Extensions*Hard Landscaping*
- *Windows, Doors & Conservatories*
- *Fitting of Aluminium Bi-fold Doors*
- *Kitchen & Bathrooms*Drives*
- *Loft Conversions*

01525 221740 07970 637511



JAMES FALCON-CROSS

LANDSCAPING AND OUTDOOR LIVING DESIGN

ALL ASPECTS OF LANDSCAPING
UNDERTAKEN INCLUDING
FENCING, TURFING AND PATIOS
TIMBER STRUCTURES
DESIGNED AND BUILT

VEGETABLE AND HERB GARDENS

01442 843258 / 07769 901325

ONECROSSFALCON@GMAIL.COM

eww

E W Wallace & Co
Chartered Accountants
Tax Consultants
Business Advisors

Small business specialists serving
Beds, Bucks & Herts

- Annual accounts
- Tax returns
- Self-employed
- Limited companies
- Small business specialist
- Sage Accounts expertise
- Prompt, personal service
- Value-for-money fees
- Free initial consultation

01525 220826

www.ewwallace.co.uk



Parties Wedding Receptions Stage Productions

Fitness Classes Business Meetings Beer Festivals

Film Shows Club Meetings Keep Fit Quiz Nights

Eaton Bray Village Hall

Capacity for 220 People Parking for 70 Cars Meeting Room Countryside Views

Bar Facilities Kitchen Facilities Full AV Facilities Baby Changing Wheelchair Access



For bookings or enquiries call: 07975 797 202

email: bookings@ebvh.co.uk

www.ebvh.co.uk



WAGGING

wonderful dog grooming

Here to take care of your mucky pup!

Your local dog grooming service in Eaton Bray

1-2-1 care for your dog

NO cages!

07580 343396

www.waggingwonderful.co.uk

info@waggingwonderful.co.uk

James B Chadburn FBHI

Fine Antique clocks & Barometers

Specialist in repairs & restorations.

Valuations & clock finding service.

Advice & assistance on formation & disposal of private clock collections.

Quality clocks/barometers Bought & sold.



Telephone 01525 221165

Mobile 07790 000629

E-mail: info@jameschadburn.com

NG AUTOS



MAKING YOU AND YOUR CAR HAPPY

CAM BELTS • MOT'S • MOT REPAIRS • HEAD GASKETS
AIR CONDITIONING • RECOVERY/BREAKDOWN
DIAGNOSTICS SERVICING • BRAKES • SUSPENSION
CLUTCHES • GEARBOXES • TYRES • WHEEL BALANCING
WHEEL ALIGNMENT COLLECTION & DELIVERY

CALL NICK OR GARY

01525 220850 OR 07972 198615

**SPARROW HALL FARM, LEIGHTON ROAD,
EDLESBOROUGH LU6 2ES**



Reception



Service Bays



MOT Station

**CHIROPODY HOME VISITING
PRACTICE**

Julia Reading, BSc(Hons)

17 years experience

- * Corns * Hard skin * Verrucae
- * Thickened/Ingrowing nails
- * Nail cutting * Diabetic feet

Please telephone: 0774 647 2781
for more information or to make

an appointment

The COLLEGE
of PODIATRY

hpcp
registered
www.hpcp-uk.org



The Gentleman Gardener

Let your local RHS qualified
gardener make your garden
beautiful, from simple
garden maintenance to total
redesign of your garden.

Please call Barry on
01525-222451 or
07541196384

to pop round for a free chat.

CHIMNEY SWEEP

Local & Est. Brush n Vac
Friendly, Clean and Efficient

Call **KEVIN HING** on

Tel: 01525 371592

Mob: 07940 528897

www.khing.co.uk

Member of NACS

D.A. Windows Doors & Conservatories

23 Church Lane, Eaton Bray, LU6 2DJ

Tel: 01525 221051 Mobile: 07807 798387

email: mimcavinder@hotmail.com

**AUTHORISED SWISH INSTALLER
WITH OVER 20 YEARS EXPERIENCE**

Installation of PVCu windows, doors and conservatories
Replacement glass units and window maintenance

**QUALITY PRODUCTS - QUALITY WORKMANSHIP -
REASONABLE PRICES**

Government
Approved
CERTASS
Contractor

General building
maintenance work also
undertaken including:
Fascias and Soffits Gutters
Fencing

Accredited Member
of the Incorporation
of Plastic Window
Fabricators and Installers
Limited



Eaton Bray Methodist Church

On the second Sunday in April our Cafe Worship was led, for the first time, by Elisabeth Bibbings. We considered the thoughts and motives of the crowd who welcomed Christ so warmly on Palm Sunday and who called so violently for his execution a few days later. It was a reflective service, remembering that Jesus had to die in order to remove our sins so that all could be redeemed for evermore. We look forward to welcoming Elisabeth again. We were delighted that our minister, Rev Nigel Bibbings was able to take our Easter

Sunday service. On this wonderful day of celebration he focused on God's One Eternity; Jesus' offering, once given, stands for ever and were reassured that there is no-one beyond God's love. On the third Sunday we were made welcome at Edlesborough Methodist Church. Our final service of the month was a United Service with the Salvation Army and our fellow Methodists from Edlesborough. Joan Gregory, a much-loved preacher, treated us to a thoughtful sermon on the Emmaus story, helping us to think of our lives as journeys and how we gain strength in difficult times along the road.

The Salvation Army, Booth Place, Eaton Bray Weekly Activities



Sunday

Footprints (Sunday School)	9.45-10.45am
Morning Worship	11am
Messy Church	3-5pm
<i>(Last Sunday of the month)</i>	
Songs of Praise	4pm
<i>(3rd Sunday of the month from May to Dec)</i>	

Tuesday

Coffee Morning	
<i>(Alternate weeks)</i>	
Music practices (all welcome)	7.30-9pm

Wednesday

Home League	2.30-3.30pm
<i>(Ladies Mtg but all welcome)</i>	
Champions Challenge Club <i>(term time)</i>	
<i>(Ages 5-10 years)</i>	
	5.45-6.45pm

Thursday

Parent and Toddler Group	
<i>(Term time)</i>	
Girls' Night Out	9.30-11.30am
<i>(1st Thursday of month)</i>	
Sewing & Craft Bees	7.45pm
<i>(2nd Thursday of month)</i>	
Ladies Fellowship	7.45pm
<i>(Last week of month)</i>	

*For further details please call Envoy Hilary Chadwick. T:01525 222087 / 07932 057490
E: hilary.chadwick@salvationarmy.org.uk
W: www.salvationarmy.org.uk/eaton-bray*

Dates for your Diary:

Social Afternoons

Weekly on Thursdays 2.00pm – 4.00pm

Chat, meeting friends, games, refreshments. All Welcome. First meeting free, then £2 per session

Music Night

Saturday 10th June 2017 at 7.30pm

There will be an organ recital by Stephen Turner (organist at The Square, Dunstable) and choral singing by the Dunstable U3A Choir, led by Elaine Trevor. We will be delighted to see you if you come to join us and support the collection for 'Christian Aid'.

Eaton Bray Cricket Club 100 Club Winners

May 2017

£25 Bernie Tickell No. 31

£10 Gillian Moss No.130

Eaton Bray Cricket Club is kindly sponsored by Meadow Marquees, Houghton Insurance & Giblin Property.



Eaton Bray Lawn Tennis Club

In case you hadn't noticed, it's election time! As the major parties, and Labour, trawl the country pontificating and spreading the usual blatant fibs about how they will create Utopia in the new post-Brexit Britain, we at EBLTC have decided to make a stand against all the other politicians, who, we've noticed, never mention tennis in their boring speeches or door-to-door canvassing. This has just got to stop. As such, our committee, eager to correct this important omission, have selected a member who will stand for election in the South Beds constituency. They will campaign under the stage name of Ronnie Racquet, and stand on a platform of, well, wood probably. Our manifesto includes a free set of tennis balls for everybody in the country, an individual lesson from our head coach Sara Leavy, and a day off every week for everyone to have a game of tennis unless it's raining, when that day may be carried over to the following week. Or you can save them all up and take all November and December off. Unlike some parties, our manifesto plans are carefully costed out by our financial advisor, Diane Abbott, and will be paid for by our treasurer, who apparently has some funds tucked away under his bed for a rainy day. So on June 8th, 'Vote Ronnie Racquet, Vote EBLTC and Vote for Tennis'!! (that's our campaign slogan).

In the meantime, we continue with the more mundane goings-on at the club. We've just completed the first batch of membership renewals, and so far 131 lucky souls have signed up; the membership secretary will be paying a personal visit to those still to do so, together with his large and unpredictable dog and probably quite late at night. I had just such a visitor a couple of nights ago, it was the Grim Reaper. I had to fight him off with the first thing that came to hand, which happened to be the vacuum cleaner. Talk about Dyson with Death. Anyway, those who succumbed to the

earlier indefatigable efforts of the committee to re-join, were all entered into a ballot for Wimbledon tickets, and such were the numbers that Wimbledon presented us with no less than 18 pairs of tickets, more than most South Beds clubs, and the same as those league giants Flitwick and Dunstable. All 18 pairs have now been allocated to the lucky winners (well quite lucky – they still have to pay for them...!) so this year's Championships will see at least 36 folk from the Eaton Bray environs attending! Maybe we should have our own hill named after us. 'Eaton Elevation' is my suggestion. I'll drop them a note when I've finished this.

And so to the EBLTC/Village Hall Quiz. Once again a sell-out crowd of getting on for 150 keen quizzers were treated to cheese, pate, salads, and questions from local celebrity quizmaster Keith Blackburn, most of which were beyond the capabilities of the mere mortals on our table. I got a couple of sport questions right, but I did struggle with the chemical equation for Heavy Water. I didn't realise water could be heavy or light, I just assumed it was all sort of medium. But you learn something every day. I'm going to get some for my pond, as it might stop the heron from wading in. I did buy a plastic heron to try to dissuade it from landing – territory already taken etc - but unfortunately it's the breeding season and yesterday when I looked out, the real heron had landed and was trying to chat up the plastic one. More than chat up in fact. The plastic one ended up on its back as I hadn't weighted it down, not expecting it to be involved in an unwilling twosome. The real one then got fed up of the plastic one's lack of action, and took off to look for fun, and lunch, elsewhere. So a sort of result. Anyway back to the quiz; Keith's Best Mates rolled out winners, closely followed by no-one. Great job by Ross and Katrina and their teams in organising the event, which always brings in around £600 each for the two groups.

Well that's it for another month. For any further information about the club, including when we get together for our social tennis sessions up at the School Lane courts, or our various activities, you can visit our website at www.ebltc.org.uk; Alternatively please call any committee

member – names and numbers on the website - Coach Sara Leavy on 07561 571578, or if they're all out and I'm not pounding the local streets canvassing for Ronnie Racquet, then me, Andy Cross, on 07783 667338. Vote EBLTC!!



Edlesborough W.I.

April was a special month for the Edlesborough WI because not only did we have our monthly meeting (the Members' Evening) on 11th April but we also hosted our Group Meeting on 27th April; with both meetings held in Edlesborough Memorial Hall. Our monthly meeting was organised differently from usual, in that the members took over from the committee, the planning and running of the event so hence the name, 'Members' Evening'. The members worked hard, particularly Brenda, Sally and Megan in producing a very interesting and successful Members' Evening, which included the committee members being presented with plants and beautifully calligraphic cards; as a 'thank you' for the work they had done during the year. The theme for the evening was 'Poppies' and included a competition for the best product which had some connection to the theme. These products included paintings, embroidery and cooking. Sue won the competition with her delicious poppy seed biscuits. Talking of food, the refreshments consisted of a particularly wide selection of cakes which were provided by the members.

The guest speaker was Jane Backhouse, a trustee and the Outdoor Events spokesperson for The Western Front Association, a registered charity, which was formed on 11th November 1980 by John Giles to keep the memory of the First World War alive by informing and educating people. Originally, The Western Front Association was only concerned with the Western Front but since those early days, the Association's work in England has grown and is now found worldwide to 'keep the memory, courage and comradeship

of all, from all sides, on all Fronts on land, at sea, in the air and the Home Front. The Western Front Association is non-political and does not seek to glorify war'. Jane, a passionate speaker, spoke of the ordinary men who went to war and the lives they lived near to and in the trenches and on no-man's land.

Leaving that very sombre but uplifting subject, the second WI event in April was the Spring Meeting of the Beacon Group which is an amalgamation of the six local WI meetings in Buckinghamshire nearest to Edlesborough and April was the turn of Edlesborough WI to host the event. The Memorial Hall was filled with numerous ladies who appeared to be happy, chatty and pleased to be meeting up with familiar faces. Each meeting read out their year's report which proved to be very interesting and varied. Following the business aspect of the meeting was our entertainer, Jeff Rozelelaar, a popular speaker with Edlesborough WI and his topic for the evening was 'An Actor and Film Extra's Life'. Jeff had his audience chuckling at his memories of his amateur and professional acting and directing experiences. It was obvious too that he enjoyed reminiscing and of course a delightful spread of cakes was provided and enjoyed by all after Jeff's amusing tales.

✍️ Jackie Flint

St Mary's 100 Club May 2017

The lucky prize-winners are:

- 1st prize – Rosemarie Allen
- 2nd prize – Rodney Latham
- 3rd prize – Ian Binks

THE PENDLEY ESTATES SALE 1915 CONTINUED

Continuing our articles on the historic sales of local property

LOT 10

(Coloured *Green* on Plan).

A FREEHOLD PROPERTY

OF ABOUT

139a. 2r. 23p.

COMPRISING

Old Ley Farm

with Homestead, situate on the outskirts of Eaton Bray Village at Eaton Green, next the high road to Billington and Leighton Buzzard, including

A Picturesque Residence

of brick elevation, Two Stories in height, with Latticed Windows, Tiled Gabled Roof and Porch Entrance, containing: ON THE UPPER FLOOR—Four Bed Rooms and a Box Room. ON THE GROUND FLOOR—Two Sitting Rooms, Kitchen and Dairy, with Out Offices and Garden, enclosed from the road by a brick wall, and Orchard.

Farm Premises

adjoining, brick and timber-built, with tiled, thatched and corrugated roofing, of Cow House, Gig House, Meal House, Piggeries, Stable, Barn, Cattle Sheds, Corn Store, Loose Box and Implement Shed; Foldyard, with Gateway Entrance from road, and Rickyard. Together with Enclosures of

Pasture and Arable Land

partly detached, and having an extensive Frontage to the Leighton Road, divided as follows:—

NO. ON PLAN.	DESCRIPTION.	QUANTITY.		
		A.	R.	P.
6	Arable	27	2	2
7	Ditto	18	0	19
50	Pasture	2	3	9
51	Ditto	5	3	1
52	Ditto	23	1	35
54	Arable	10	3	23
55	Ditto	15	1	19
96	House, Garden, Buildings and Yards	0	3	25
97	Orchard	0	3	19
98	Pasture	2	2	22
117	Ditto	2	3	16
Total A.		111	0	30

Let to Mr. Gaius Batchelar on a Yearly (Michaelmas) Tenancy, at the Rent of

£166 10s. per annum.

ALSO

MEADOW LAND

OF ABOUT

28a. 1r. 33p.

AS FOLLOWS:—

NO. ON PLAN.	DESCRIPTION.	QUANTITY.		
		A.	R.	P.
1B	10	3	16
56	17	2	17
Total A.		28	1	33

Let to Mr. Gaius Batchelar on a Yearly (Michaelmas) Tenancy, with other Lands comprised in Lots 9 and 11, at the Rent of £570 for the entirety, of which

£43 per annum

is apportioned for the purposes of Sale, as payable in respect of this Lot.

Summary of Lot 10.

DESCRIPTION.	TENANT.	QUANTITY.			RENTAL.			
Old Ley Farm	Mr. G. Batchelar	A.	R.	P.	£	s.	d.	
		111	0	30	166	10	0	
Meadow Land	Ditto	28	1	33	43	0	0	
		TOTAL A.			139	2	23	£209 10 0

The Apportioned Tithe Rent-charges are : Rectorial, 10s. 8d. ; and Vicarial, £33 15s. 1d., the aggregate value for 1915 being £26 8s. 5½d. There is also a Modus of 3s. 11d. The Land Tax (partly acreably apportioned for the purposes of Sale) amounts to £8 17s. 10d.





All Saints' Church, Dagnall

Services in June 2017

Sun. 4th June	9.00 am	Eucharist
	10.30 am	Morning Service
Sun. 11th June	10.30 am	Morning Service
Sun. 18th June	10.30 am	Family Communion
Sun. 25th June	10.30 am	Family Service
Sun. 2nd July	9.00 am	Eucharist
	10.30 am	Morning Service



Sunday School meets each Sunday at 10.30 am except when there is a Family Service.

FOR SALE

**Dolls House with
lots of wooden
furniture**

£30

Phone:

01525 221733



**Stay & Play
Toddler
Group**

**Musical
Monkeys**

**Eaton Bray Village Hall
10-11.30am on Fridays**

**£4.50 for one adult and child
£1 for extra children/adults
0-6 months free**



Sunday 25th June 2017
At 11 a.m.



CELEBRATION

Music Drama
Worship Kites
Praise with a big view!



Join us at the Dunstable Downs car
park for a day of fun and worship
(Car park £3, NT members free)

fitness 4fun



Get those muscles working! Tone and strengthen arms, legs, bums and tums – you'll look and feel great.

Why not give it a go? Only £5 per week for one hour of fun fitness. Pay-as-you-go, come when you can.

Come along and join our friendly group. Everyone welcome.

No need to book – just show up.

What: Fitness4Fun with Kay
Where: Edlesborough Memorial Hall
When: Every Friday, 10:00-11:00 am

WK WasteKing

Recycling today for tomorrow...



The Complete Waste Management Service



Local Skip Hire



Man & Van



Rubbish Clearance



Nationwide Grab Hire



Sweeper Hire

Call us today on: **01442 210047**
or email: skiporders@wasteking.co.uk

www.wasteking.co.uk

Unit 25, Airfield Industrial Estate, Long Marston, Cheddington HP23 4QR
Waste carrier CDBU93920 - Transfer Site License 402839

GROVE FARM

PYO

**Open from approx mid June to mid October
Pick Your Own Soft Fruit, Vegetables and Potatoes**

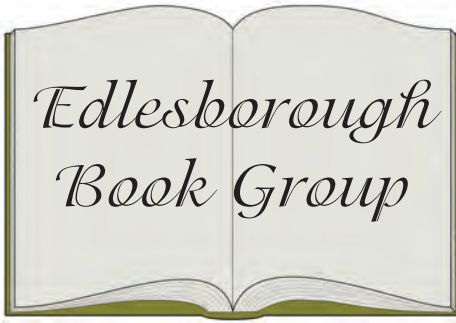
Opening Hours

Monday – Saturday 10am – 6pm

(last entry 5.15pm)

Sunday 9am – 1pm (last entry 12.15pm)

**For more information visit
www.grovefarmpyo.co.uk
or ring 01296 668175 in June**



Sweet Caress by William Boyd


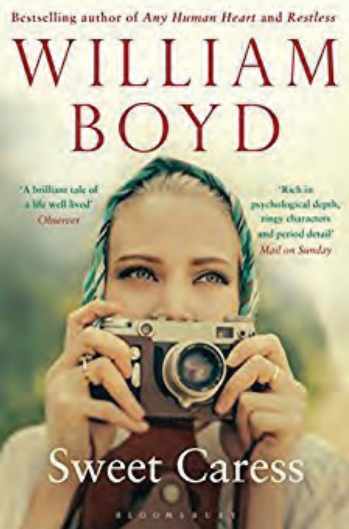
William Boyd is a prolific novelist, his books have covered a variety of themes, making them usually a pleasure to read. This, his sixteenth novel is no exception, his expert story telling drawing the reader quickly into what is a quite a huge undertaking. The story of a woman's life, covering her birth in 1908 until 1977 where we find her living in Scotland and reviewing her life.

Her name is Amory Clay and as a young girl she is given a camera and some rudimentary instructions from her uncle Greville, a society photographer. This gift sets off a passion for photography which will shape her life.

After a mediocre boarding school education, she works with her uncle as an assistant, but soon tires of the wedding and portrait photography which is his bread and butter. She starts to branch out on her own and seizes opportunities to graduate to more artistic

and realistic work. This takes her to the cabaret society of pre-war Berlin, on to New York, to the Black Shirt riots in London and to France during World War Two, where she becomes an official war photographer. Her career as a photojournalist is interspersed with her various liaisons with mostly influential men and is woven in with the diary that she is writing in 1977. Throughout the book there are photographs purporting to be Amory Clay's work which add to the illusion that this is a real character. William Boyd covers a vast number of events, both actual and fictional, weaving them together into a credible story.

Amory Clay is a woman in a man's world, fighting to be recognised on her own merit at a time when her chosen career is not a usual one for a woman. Her story is that of a life well lived, full of action and adventure making a novel both interesting and easy to read.



*St Mary's Church,
Edlesborough
will be opening for visitors
from 2pm to 5pm on the
first Sunday of each month
from May until September
inclusive*

"Excellent experience. I nearly fell asleep whilst having my fillings done! Very reassuring - no rush. I was made to feel completely at ease. Thank you!"
- R.R



Edlesborough Dental Practice



floss and smile

gentle dentistry



"Without doubt the most competent, gentle & lovely dentist...'
..friendly warm manner instantly put me at ease. I would highly recommend this practice '
-M.C

Edlesborough Dental Practice

Telephone: 01525 223175

11 Cow lane, Edlesborough, LU62HT

www.flossandsmile.co.uk



The Clear Alternative to Braces

HOME VISITS AVAILABLE ON FRIDAYS



Implants

EMERGENCY TEXT TO : 07590035899.

Dentist :
Dr A. Johar
GDC number : 111350

Hygienist:
Mrs Jane Showder
GDC number : 2344

**General Family Dentistry *Crowns *Bridges *Dentures *Smile Makeovers
*Tooth Whitening *Tooth straightening *Implants *Botox
*Hygienist *Sedation *0% Finance** 

FREE QUOTATIONS



AJR

BUILDING SERVICES

Over 25 years experience

Friendly and Reliable Service

Fully insured

All aspects of building work undertaken:

- Kitchens & Bathrooms
- Refurbishments
- Garage Conversions & Extensions
- Plastering, Painting & Decorating
- Wall and Floor Tiling
- Patios and Fencing
- Fascias & Soffits
- General Maintenance

Mobile: 07931 308306 Tel: 01582 475428

Email: ajrbuildingservices@hotmail.com

A McClelland Pest Control



FOR FAST RESPONSE CALL:

Mobile 0777 494 8415

Office 01582 872158



*specialists in: wasps - bees - ants
hornets - fleas - cockroaches - bed bugs - pigeons - magpies - rabbits
rats - mice - moles - squirrels
foxes - mink - feral cats*



UNMARKED VEHICLES

For further information please call or email
amccellandpestcontrol33@gmail.com



STOCKISTS FOR



GUTTER BRUSH

- All aspects of Pressure Washing - Roof Cleaning / Coating specialists

- Safe cleaning system using rope access
- Roofs cleaned using 'controlled' pressure washing
- All water recycled

For before and after photos please visit:

<http://www.facebook.com/greatoutdoorsandin>



0800 298 5883

www.greatoutdoorsandin.co.uk



FREE INITIAL CONSULTATION

**ALL ACCOUNTING,
PAYROLL AND TAXATION
SERVICES COVERED**

Specialising in New Business Start-Ups

- Fixed Fee Quotes
- Unlimited Email and Telephone Support
- Back Office Solution
(dealing with your back office accounts function enabling you to focus on the rest of your business)

Please contact us for more information...

Gable End, Sparrow Hall Business Park, Leighton Road, Edlesborough, LU6 2ES

Call us on... 01525 229 539

enquiries@rileyaccounts.co.uk • www.rileyaccounts.co.uk

@RileyAccounts • Also on

"YOUR LOCAL ACCOUNTANT"

Brockley Designs

Design and Publishing Services

*Have you written a memoir, novel
or your family history?*

Interested in seeing it in print?

For an informational eBook and a free
one-half hour telephone consultation

Contact **Rebecca Shaw**

07931 950001

or +1.404.247.8269

shawrebecca@gmail.com

www.BrockleyDesigns.com

Leighton Plumbing & Heating

Oil fired boilers
service, repairs
& installations



All other aspects of plumbing
& heating undertaken

Oftec registered & insured

01525 385250
07774 567472

11 Woodman Close
Leighton Buzzard
Beds
LU7 3NU

leighton-plumbing@ntlworld.com

 **Stoten Gillam**
chartered accountants
chartered tax advisers

99 High Street South
Dunstable
LU6 3SF

Tel: (01582) 608601
www.stotengillam.co.uk

ICAEW
CHARTERED
ACCOUNTANTS



"Practical
Solutions for
Growing
Businesses"




We clean your oven...so you don't have to!

Call today to have your oven, hob, extractor or
Aga professionally cleaned

Contact Paul Joyce: Tel 01525 792761
Mob 07808 580718
pauljoyce@ovenwizards.com

The Quantum Energy Holistic Wellness Centre



Gift Vouchers

Balance Your Mind Body & Spirit



Health Screening
Personalised Remedies
Bioresonance

Far Infrared Detox Bed
Aqua Detox
Amethyst Biomat

Aura Chakra Imaging
& 40 page Reports



Polarised Light &
Colour Therapy

Vibrational Medicine
Tesla Energy Lights
Frequency Therapy

Profound Relaxation
Perkl Energy Spa
Flower Crystal Remedies




Ring Emma today for a free phone consultation

Also treated are; **Food Sensitivity** **Seasonal Affective Disorder (SAD)** **Environmental Sensitivity**
Allergy Sensitivity **Vitamin Mineral Assessments** **Desensitise to pets, environment & smoking**

Appointments 01525 221111 www.energy-medicine.uk emma@energy-medicine.uk

Buffalo House, Mill Road, Slapton, LU7 9BT (we share a drive with Equestrian Centre)

THE PERFECT PLACE FOR ANY OCCASION....

 *ACCOMMODATION - OFFERING A VARIETY OF
ROOMS/SUITES*

 *BREAKFAST, LUNCH OR DINNER
IN OUR HENRY'S RESTAURANT*

 *SUNDAY LUNCH*

 *MEETINGS*

 *WEDDING PACKAGES*

 *PRIVATE FUNCTIONS*

 *FUNERAL RECEPTIONS*

 *CHRISTMAS & NEW YEAR PARTIES*



FOR MORE INFORMATION ON WHAT WE OFFER,
PLEASE CALL US ON

01582 662201

OR VISIT OUR WEBSITE.

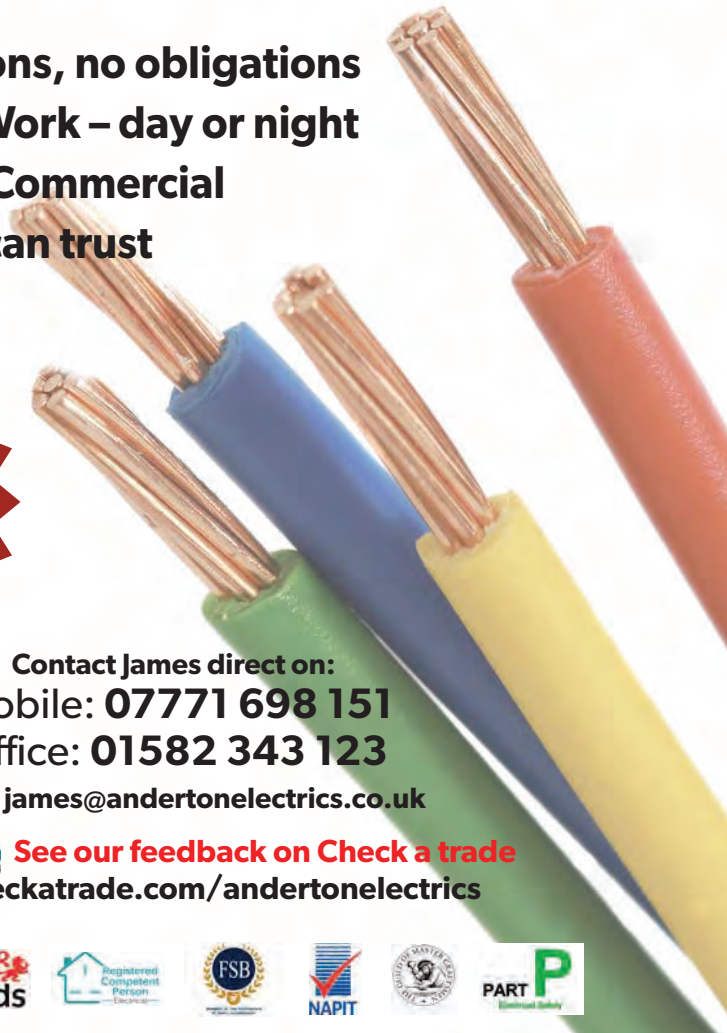


ANDERTON ELECTRICS

Keeping you wired up.

- ✓ Free quotations, no obligations
- ✓ Emergency Work – day or night
- ✓ Domestic or Commercial
- ✓ A name you can trust

**FREE NO
OBLIGATION
QUOTATIONS**



Contact James direct on:
 Mobile: **07771 698 151**
 Office: **01582 343 123**

Email: james@andertonelectrics.co.uk

Proud members of
Checkatrade.com See our feedback on Check a trade
Where reputation matters
www.checkatrade.com/andertonelectrics



D Scott and Sons Home Services Limited

contact us now on
01525 791563
07921 670437

Plumbing and Heating Specialists

- Boiler Repair
- Boiler Installations
- Powerflushing
- Annual Servicing
- Landlords Certificate
- Magnetic System Filters
- Radiator Valves
- Oil Central Heating

Other services...

We offer a full range of plumbing services including full bathroom refits, shower replacements, kitchen appliance installations, sinks, taps, traps & drainage.



**24/7
Call Out**



www.dscottandsons.com



TODDINGTON
INDEPENDENT FINANCIAL ADVICE

DO YOU NEED FINANCIAL ADVICE?

Can we help you to review
your current or proposed?

Mortgages, Insurances, Pensions & Investments,
Equity Release, Inheritance Tax, Wills and Trusts?

Free Will with Investments & Pensions over £30,000

Talk to us for a free initial consultation

LOCAL OFFICE: Toddington

Contact: Philip Hadlow
Tel/Fax: 01525 874100
Mobile 07768 277 532



or email: info@toddingtonifa.co.uk

Toddington Independent Financial Advice Ltd is authorised and regulated by the
Financial Conduct Authority, Registration Number 760687.

Registered office: Unit 9, Griffin Farm, Conger Lane, Toddington,
Bedfordshire, LU5 6BT, Company Number: 9931606

NEURO PHYSIO BERKHAMSTED

SPECIALIST NEUROLOGICAL PHYSIOTHERAPISTS

BSc (Hons) HPC Registered

Providing Physiotherapy treatment in your
own home if you have a neurological
deficit affecting your movement including

- Stroke
- Parkinsons Disease
- Multiple Sclerosis
- Balance Problems

07786 363638 / 07909982569

physio@neurophysioberkhamsted.co.uk
www.neurophysioberkhamsted.co.uk

All Trees & Hedges

Reliable & friendly service • Family run business
Competitive prices • Qualified advice • Fully Insured

Tree work undertaken

Tree felling • Precision dismantling • Crown reduction
Crown thinning • Crown lifting • Formative pruning
• Stump grinding • Stump removal
Deadwooding • TPO / conservation area work

Hedge work undertaken

Hedge reduction • Hedge planting • Hedge trimming
Shrub clearance • Hedge laying

Other Services

Grass Cutting • Fencing • Green Waste Recycling • General
Garden Maintenance • Tree Lighting • Logs / Kindling

CALL NOW ON:

07701 094 934
01525 220 823

E: info@alltreesandhedges.com

W: www.alltreesandhedges.com

CDM Builders Ltd
07984086029

GENERAL BUILDING
NEW HOMES
EXTENSIONS
CONSERVATORIES
ALTERATIONS
BRICKLAYING
GROUNDWORK
PATIOS

With over 20 years experience in the building trade

All aspects of work undertaken by our own professional tradesmen to a very high standard

Please contact Clive for a free quotation
T: 01525 222605 M: 07984086029
Email: Clive.munt@hotmail.co.uk

Coffee Tavern



Large Hall £6.00 per hour

Committee Room £3.50 per hour

Large Hall & Committee Room £8.00 per hour

Bookings 01525 220891
Stairlift and access ramp available



DANIEL
07956-500223

- PLUMBING
- DECORATING
- GENERAL HANDYMAN

Email: djhpropertyms@gmail.com



Electrical Services
www.rselectricalservices.com



**FULLY QUALIFIED
ELECTRICAL ENGINEER**
CPS Registered through NICEIC Scheme

Competitive prices and quality service

Available for all your domestic and commercial electrical requirements

No job too small

Call Russell Sears:
07578 008567
01525 220008

17 Good Intent, Edlesborough



The
Orchards
EDLESBOROUGH

Cow Lane,
Edlesborough LU6 2HT

COMING SOON

A superb development of luxury 4 & 5 bedroom family homes. Launching Autumn 2017.



T: 01582 477 077 E: dunstable@house-hold.co.uk
or visit www.house-hold.co.uk



A Carey Group Company
www.careysnewhomes.co.uk

FREE Property showreels
for every home



movewithus
recommended agent



rightmove.co.uk
The UK's number one property website

Salmon with a Port, Honey, Tomato and Basil Vinaigrette

How do I cook fish? And how do I make it interesting? Those are two of the most common questions I get asked on the Weekend Kitchen. The answer is actually easy... cook it fresh and simply, and marry it with uncomplicated flavours. This is a lovely way to jazz up a salmon fillet – a sweet honey, port and balsamic vinaigrette, bringing colour and flavour to the fish. It's a recipe created by Lisa Roberts, who runs Lisa Roberts Catering in Dunstable. Of course, she has to make food which is guaranteed to work for a large crowd so you can be sure that this dish is foolproof for your dinner party with friends.

Serves 4

4 salmon steaks

1 red onion, diced

A good glug of port

1 tsp honey

250ml olive oil

A splash of balsamic vinegar

10 cherry tomatoes, quartered

A big handful of basil leaves, chopped

A bunch of asparagus

New potatoes to serve

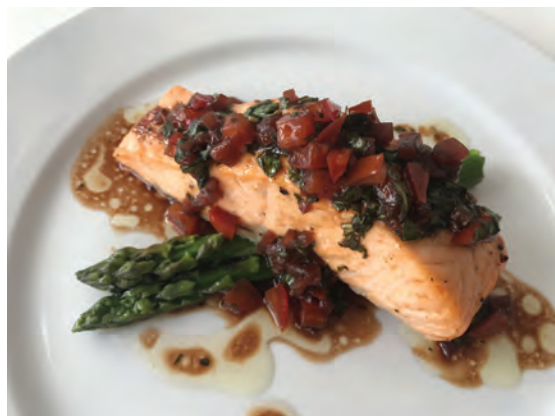
Cook the new potatoes in boiling water for around 15 minutes or until they are soft in the middle. Toss them in a little butter and season with salt.

While the potatoes are cooking, make the vinaigrette. Put the diced onion in a pan, cover it with port and honey and cook it slowly and gently until all the port and honey has been absorbed.

Put this to one side and allow it to cool.

Add the chopped tomato and the basil to the cooled onion mix. Taste and season with a little salt and pepper.

Now add the olive oil and balsamic



vinegar. Taste again and add a little vinegar if you feel it needs a little more tartness. Season again if needs be.

You can either grill the salmon fillet under a medium grill for 10 minutes, turning halfway through or simply bake in the oven at 180C/ Gas Mark 4 for 10 minutes. Meanwhile, wash the asparagus and trim off the tough base. Cook them in boiling water for around four or five minutes (depending on their size), leaving them with a little bit of a crunch in the bite.

When the salmon is cooked, place each fillet on a few asparagus spears, top with the sweet tomato vinaigrette and serve with the new potatoes.

Hear wonderful recipes on Nick Coffey's Weekend Kitchen every Sunday morning on BBC Three Counties radio at 11am. You can also join Nick every weekday afternoon at midday for brilliant local guests with great stories to tell and all the music you want for your early afternoon.



95.5 FM | 103.8 FM | 104.5 FM | DAB | bbc.co.uk/threecounties

St Mary's Ladies Guild

The Ladies gathered for the May meeting at St Mary's and were welcomed by Deirdrea, who gave birthday cards to those who celebrated their birthdays in May.

Deirdrea led the devotions, stressing the theme of love and gratitude in our lives.

Notices were given of the Guild Coffee Morning held on 13th May 10-12, the proceeds to Hospice At Home.

Afternoon Tea at Poplars, price £9.50, monies needed by next month.

Annual Outing to Bury St Edmunds on 16th August, names to Jenny by June.

A review survey form was given to each member for their suggestions and comments for the future content and running of the Guild.

Next months meeting 14th June, speaker Dorothea Conti on "Quite a life".

The speaker, Jacqui Richardson, spoke of Mary's Meals, who set up school feeding programmes in some of the world's poorest communities, where poverty and hunger

prevent children from gaining an education. They provide a daily meal in a place of learning only, to attract chronically hungry children into the classroom, where they receive an education, which can set them free from poverty in later life.

Mary's Meals began by feeding 200 children in Malawi in 2002-today they are feeding more than one million children every school day across four continents.

Watching the DVD entitled 'Child 31' absolutely tugged at the hearstrings seeing the children in the classroom, eating their one meal a day of porridge, fortified with vitamins.

Jacqui was a very passionate speaker and had devoted her time, money and love to this work. The vote of thanks was given by Jenny. Social time followed with tea prepared by the committee and a raffle.

A warm welcome is given to anyone who would like to join us on the second Wednesday of the month at 2.00pm.

London Luton Airport

With an increase in aircraft in the area and in particular when the wind is from the East, we are getting some aircraft flying directly over the village to join the flight path into the airport. If you are disturbed by the traffic flying over the village, there is a complaints hotline number: 01582395382. This is an airport number where you can register your concerns. It is important to do this if we are to reduce these disturbances over our village.

If you need to complain about Heathrow flight noise the number is 0800 344 844. Email: noise_complaints@heathrow.com



NORTHALL VILLAGE HALL needs more willing hands!

People to help with occasional projects such as decorating, tidying the grounds and one-off projects as and when they occur.

It's fun and rewarding when a band of volunteers come together to pool resources - we know as we've been doing it for many years! We are now reaching out for more people to volunteer alongside us. A little of your time once in a while will help keep the Hall - a Village Asset - open and running effectively for all of Northall to enjoy. If you can offer any kind of help please do get in touch; we'd love to hear from you.

Email us at: northallevents@hotmail.com
or contact Kevin Cabbage on 01525 220361

Northall Village Hall
Management Committee

June at the Grove

Film



VICEROY'S HOUSE (12A)
MON 5 JUNE 2.30PM & SAT 17 JUNE 7.30PM

RULES DON'T APPLY (12A)
MON 12 JUNE 2.30PM



THE ZOOKEEPER'S WIFE (12A)
SAT 17 JUNE 4.30PM & MON 19 JUNE 2.30PM



THE HATTON GARDEN JOB (15)
MON 26 JUNE 2.30PM & 7.30PM



BEAUTY AND THE BEAST (PG)
SAT 17 JUNE 11AM & 2PM



Let's Have a Laugh!

ALL-STAR STAND-UP TOUR 2017 - SAT 3 JUNE 8PM

4 top comedians come to Dunstable for this year's All-Star Stand-Up Tour.

The biggest comedy tour of the year is starring: Ivan Brackenbury (Hospital People), Andrew Lawrence (Live At The Apollo, Michael McIntyre's Comedy Roadshow), Ben Norris (Mock The Week) & David Morgan (I'm A Celebrity Get Me Out Of Here Now!)



BARNSTORMERS STAND-UP COMEDY - THU 22 JUNE 8PM

Make Thursday of that week in June a game-changer with a rib-tickling night out.

The compère for the evening will introduce three top comedians from the London circuit, including regulars from The Comedy Store and Jongleurs.

Don't miss the last Barnstormers of the season!



Ticket prices vary; for more information or to book, call the Box Office on 01582 60 20 80 or visit the website at www.grovetheatre.co.uk.

'Dear Zoo' set for New Chapter at ZSL

Whipsnade Zoo

New family adventure at ZSL Whipsnade Zoo to mark 35 years of Rod Campbell's classic children's book

Saturday 27 May to Sunday 4 June 2017

This May half-term, ZSL Whipsnade Zoo is partnering with Macmillan Children's Books to celebrate the 35th anniversary of legendary author Rod Campbell's famous book, *Dear Zoo* – with a new experience for the whole family to enjoy.



From Saturday 27 May to Sunday 4 June, families will be able to embark on a self-guided adventure trail around the UK's largest Zoo, discovering the real-life animals that inspired the nation's favourite childhood read – including elephants, lions and giraffes.

Children of all ages can follow the popular book's characters on this fun-packed journey, collecting stamps and taking part in exciting activities at each stop – before settling down for a cosy *Dear Zoo* reading session at the storytelling hub.

Victoria Sage, Events Manager at ZSL Whipsnade Zoo, said: "*Dear Zoo* is coming to life at ZSL Whipsnade Zoo and we are sure families will love becoming part of the story with this thrilling adventure trail.

"For 35 years, Campbell's tale of a child who writes to the Zoo to send them a pet has enthralled children and now kids and adults alike have the chance to delve beyond the pages here at ZSL Whipsnade Zoo."

Visitors following the trail will get to see ZSL Whipsnade Zoo's new Centre for Elephant Care – a £2m new indoor home for the Zoo's herd of nine Asian elephants. *Dear Zoo* concludes with the gift of a puppy and once visitors have completed the adventure trail they can take a trip to see Whipsnade's very own group of newly-arrived African hunting dogs.



***Dear Zoo* at ZSL Whipsnade Zoo** will run from Saturday 27 May to Sunday 4 June 2017. A great value family day out, the *Dear Zoo* experience is included in the Zoo entry price.

Don't miss out on this fantastic event – save 10% when you book your tickets online at www.zsl.org

Dagnall Weather Station (AONB)

Weather Conditions for April 2017

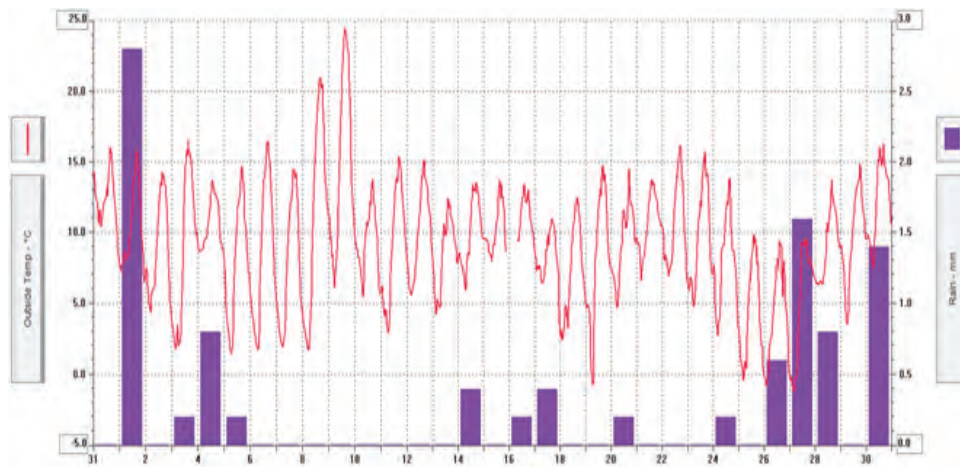


Elevation: 450 ft - Latitude: 51° 50' 13" North - Longitude: 0° 33' 34" West

There are only two ways to describe April: dry and very dry. We only had 9.8mm (0.39ins = 3/8in) of rain, which is less than a quarter (23%) of the 10 year April average for Dagnall. The month started with low pressure, giving a showery day by the 9th and allowing the temperature to rise to 24.5°C, so we had a warm and sunny weekend. Then a cold snap between the 24th and 27th brought a few days of frosty mornings. During the rest of the month, the temperature was stable with a day time temperature of around 14-16°C, although it did feel a little colder due to the dominate wind coming for the North West.

	High	Date/Time	Low	Date/Time
Temperature:	24.5°C	9 April 14.30	- 1.2°C	27 April 03.30
Mean Temperature	9.2°C			
Dewpoint:	12.3°C	9 April 20.00	- 3.1°C	25 April 04.30
Humidity:	96%	3-5-6 April	32%	8 April 16.30
Barometer:	1036.7 mb	19 April 10.00	997.2 mb	30 April 20.00
Wind Speed	33mph NW	19 April 13.00	Months avg.	4.4 mph
Wind Chill:	22.7°C	9 April 15.00	-2.5°C	25 April 05.00
Dominant Wind:	NW			
*Rain Days: 13(T), 13(R)				
	Wettest Day 1st April		2.79mm	0.1098 ins
Monthly Rain:	Total	April 2017	9.8mm	0.3858 ins
Yearly Rain:	Total	3 Month	166.4 mm	6.5512 ins

Plot shows the low rain fall and temperature



For weather data 24 hours a day, updated every 15 mins, visit: www.dagnallweather.co.uk and http://bit.ly/weather_dagnall for this site forecast and much more

If anyone has a question, comment or wishes to contact me please email: david@dagnallweather.co.uk or telephone: 01442 843883

Dagnall weather now has an app for your ipad & iphone! Just go to the apple store, search for Wunderstation and follow the instructions to Dagnall Weather Station. Now updated every minute.

The May meeting of the Institute is always the one when we discuss and vote upon the Resolutions which have been selected to go forward by the National Federation.

The 1st of the Resolutions was duly presented by member Sally and it was for the Government to create legislation to combat loneliness. Current statistics tell us that there are many, many people of all ages and from all walks of life that suffer loneliness and this, in turn, causes mental illness etc. The members felt unable to support this particular resolution as they felt it is impossible to legislate for and that it is best dealt with locally, within communities and by individuals and organisations such as us. It was recognised nevertheless that not everyone who seemed lonely will welcome intrusion into their lives, however well meaning and by whoever it is given.

The 2nd Resolution was also ably presented, but this time by member Elizabeth and it was urging the Government to actively and urgently pursue research into the quite recently discovered problem of micro plastic fibres. (plastic soup) which are in all synthetic fabrics - not to be confused with micro beads, in toothpaste and cosmetics etc., which are already well known. You cannot see the micro plastic fibres with the naked eye as they are smaller than a human hair and there are many thousands of them on your clothes etc. Each time you wash them the problem is exacerbated. These fibres eventually get into the oceans of the world and subsequently the food chain and so on. The science on these is currently in its infancy and much more needs to be done. There are some measures that can be taken to alleviate the problem. For instance not washing your clothes, filters on washing machines, wearing only cotton and wool etc, but none so far care very practical and probably expensive. The ladies voted in favour of this

resolution.

The final decision upon both resolutions will be decided at the NFWI Annual meeting later in the year at Liverpool when representatives from all Institutes attend.

After all the "main" work we all tucked into a delicious cheese and wine supper, catered for by member Jane Jones, resulting in a sociable and happy ending to the evening.

Coming up shortly:-

1. Walking guided tour of Winchester and visit in the afternoon to a house and gardens somewhere.
2. Summer supper somewhere.
3. Visit to house and gardens at Chenies Manor.

Yes another busy Summer!!!

✍️ Sue Parker

LADIES ONLY

**PERSONAL
FITNESS TRAINER
Level 3**

FREE INITIAL CONSULTATION
Beginners welcome
In the comfort of your home or
my local gym in Dagnall, HP4

Contact
07805 419685 or
ros@riverbanksclinic.co.uk





Salvation Sound

The Salvation Army celebrating 130 years. Then & Now

In 1887 when The Salvation Army came to the area Queen Victoria was celebrating her golden jubilee, Buffalo Bill was touring in London, and St John's Ambulance commenced.

Eaton Bray Salvation Army is the same age as Hammersmith Bridge in London.



Today



Why not come and see what going on at our hall in Booth Place?

Future Events

Christian Magician (Informal family service) – Sunday 16 July at 11am



Monday 14 - Friday 18 August
10am – 12 midday.
Sunday 11am Celebration

For more details contact Hilary Chadwick(Envoy) 01525 222087; 07932 057490;
hilary.chadwick@salvationarmy.org.uk

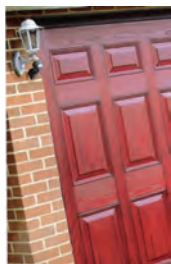


Premier Garage Doors & Gates



Quality Garage Doors

- ✓ Superb choice of designs in metal, wood and fibreglass
- ✓ Any size door made to your requirements
- ✓ Large selection of spares & fast repair service available
- ✓ New or existing doors converted to automatic
- ✓ Professionally fitted by own expert craftsmen
- ✓ Prompt free estimates & advice
- ✓ We cover all areas



(EST 1984)

DIY kits available
Insurance work welcome
Council approved
Remote control gates also available



Unit 7, Sparrow Hall Farm, Leighton Road, Edlesborough LU6 2ES

01525 220212

www.premiergaragedoors.co.uk

JANES

FLOORING DIGITAL APPLIANCES CYCLES SERVICE

Get the garden ready for Summer!

Lawn Mower Service from **£50**

- Sharpening blades
- Clean air filter
- Oil & plug change
- Test & run



Get out and about

Adult and kid's bikes

We stock adults, kids, mountain and electric FreeGo bikes.

Test ride your bike before you buy, we will help and advise you to getting the right bike for you.



We will build and make it road-ready on collection.

Free First Service on a new bike bought from JANES.