



FOCUS

April 2017

**The local village magazine just for Us!
Eaton Bray, Edlesborough, Northall & Dagnall
Focus is online at www.thefocusmagazine.co.uk**

*The White Horse Inn
At Eaton Bray*

Market Square
Eaton Bray
Beds
LU6 2DG
01525 220 231
www.eatonbraypub.co.uk



Get involved with

BRAYFEST

Eaton Bray's festival of beer, Wine
and accompanying food!

FRIDAY 28TH APRIL TO MONDAY 1ST MAY

10 real ales & world wines

plus sausages and cheeses

from around the world

great entertainment all weekend

*Do you have a skill or hobby that you would like to
display at the festival?*

*We want to expand the festival and want to hear about your ideas,
please contact Tom at the pub by phone or pop in.*

invites you to

Café Community

Eaton Bray
Methodist
Church

Saturday 8th April 2017

11.00am to 1.00pm

Charity of the month:
"Help Refugees"

Relax & chat with friends,
coffee/light lunch

All ages welcome (inc. activity area).



NORTHALL BAPTIST CHAPEL

Chapel Lane, Northall

(just beyond the 30 speed limit signs on
the road towards Leighton Buzzard)

Everyone is welcome to our Sunday
worship each week between 11am and
12.30pm including tea/coffee and time to
talk together.

For more information contact:

John Hazell 01525 218142

Email northallchapel@btinternet.com

There has been a Baptist Chapel in Northall
for more than 200 years. Today we continue
to seek to worship God, serve him in our
daily lives and support and encourage one
another in the difficult and the joyful times.

The Focus Magazine Committee

Editor: Sally Siddons

34 Wallace Drive, Eaton Bray 221733

Email: sallysid@hotmail.com

Assistant Editor: Liz Constable

Eaton Bray 222234

Email: lizconstable@hotmail.co.uk

Dagnall Representative: Sue Cawdell

10 Deans Meadow, Dagnall 01442 842200

Circulation Manager: John Plater

41 Church Lane, Eaton Bray 221095

Treasurer/Leaflet Enquiries: Ken Coates

10 The Nurseries, Eaton Bray 220868

Business Advertising: Sally Siddons

34 Wallace Drive, Eaton Bray 221733

Design and Layout: Tracey Moren

(Moren Associates Limited) 01525 229695

Printed by: PRIORITY Press

Dunstable 01582 699851

Copy for publication to the Editor by the

10th of the month

*Focus accepts no responsibility as to the
accuracy or content of any advertising or articles
published in 'this' magazine, neither do they
reflect the opinion of members of the Committee.*

*© Articles published in Focus may not be
reproduced without permission.*

**Focus would like to remind contributors
that the deadline for articles is the 10th
of the preceding month**

Kindly Note

*If the event you wish to advertise falls in the first
week of the month, it is advisable to get the details
into Focus a month earlier. The magazines are
not delivered from the printers until the first of the
month, therefore it takes a few days for them all to
be circulated throughout the village.*

✍️ Editor

Focus is online at www.thefocusmagazine.co.uk

Village Diary April 2017



Weekly

- Mon-Fri (term time) Eaton Bray Pre-school, Eaton Bray Lower School, 01525 220468
- Mon-Fri (term time) Dagnall Under 5's, Dagnall Village Hall, 9.15am - 12.15pm, Mrs Ann Tobin 07816 358342
- Mon-Fri (term time) Edlesborough Pre-School, Edlesborough School, 01525 220431
manager@edlesborough.bucks.sch.uk
- Mon-Thu (term time) Totternhoe Pre-school, mornings, Totternhoe Lower School, Michelle Urbanowicz on 01582 668841
- Mondays Pilates, 10.45am, Totternhoe Memorial Hall, Lisa: 07799 893489
- Mondays Dagnall Community Choir, All Saints Church 7.45 – 9.45pm
- Mondays (term time) Movement and exercise classes with a dance flavour, Northall Village hall 2-3.30. Contact Jan 01442 864271.
- Mondays Curtain Call Youth Theatre 5-7.30pm, Eaton Bray Village Hall, Gavyn 01525 220525
- Mondays Curtain Call Theatre Group - 7:30-10:30pm Eaton Bray Village Hall, Sheila - sdtwinkletoes@yahoo.co.uk
- Mondays KFPA ISTD Classical Ballet classes, 3+yrs, 4.15pm, Edlesbrough Memorial Hall, www.kfpa.co.uk
- Tuesdays Line Dancing, 1.30-3p.m., Eaton Bray Village Hall, Lyn Stubbs 220731
- Tuesdays Pilates, 10-11am, Eaton Bray Village Hall, Nicky Roussou 07861 162680
- Tuesdays Totternhoe Baby & Toddler Group, 9.30-11.30am, St. Giles Church Hall, Ruth Allen, 01525 222468 or 07796 265174 or email ruthallen002@gmail.com
- Tuesdays Northall Baby & Toddler Group, 9:30-11:30am, (open in the Summer School Holidays) Northall Village Hall, Sam George: 07748 152379, Tracy Bennett: 07803 123318
- Tuesdays Tap & Ballet Classes, JoAnn Latus School of Dance, 4-8pm, Eaton Bray Village Hall, 01582 620576
- Tuesdays Beginner's Boxercise, 6-7pm Dagnall Village Hall, Josh Thompson 07456 574405 or jtptinfo@gmail.com
- Tuesdays Coffee Morning, Bring & Buy, Table Top Sale, 10-12noon, Salvation Army Hall, Booth Place, Eaton Bray
- Wednesdays Pilates, 7.15pm, Northall Village Hall, Lisa: 07799 893489
- Wednesdays Egyptian Dance Class, 7.30-8.45pm at Eaton Bray Village Hall. Contact: Soraya on 07976 964316 for more details
- Wednesdays Northall & District Age Concern Wednesday Club, 10am - 3pm, Northall Village Hall, Contact Anna on 07854 230243
- Wednesdays (term time) Caterpillars Baby and Toddler Group 10am to 11:30am, Grace Baptist Church, Moor End, Edlesborough, £1 per family unit, Frances King 01582 475896
- Wednesdays Pilates 6.45 & 7.45pm, Dagnall Village Hall, Andrea on 07855 138005 or andrea@naturalpilates.co.uk
- Wednesdays Art of Ju Jitsu martial arts class, Eaton Bray Village Hall, 7 -7.45pm ages 6-15yrs
- Thursdays Yoga, Northall Village Hall, 11.30am-1pm 01525 377542
- Thursdays Baby & Toddler Group, Salvation Army Hall, Booth Place, Eaton Bray, 9.30-11.30am
- Thursdays Jazzercise, 9.30-10.30am, Eaton Bray Village Hall, Angela Veryard, 01525 715208
- Thursdays KFPA Street dance classes 4+yrs 4pm, Edlesborough Memorial Hall, www.kfpa.co.uk
- Thursdays Tae Kwon-do, Dagnall Village Hall, 5.45-7.30pm 07813 755785
- Thursdays Clubbercise 7.30 - 8.30pm. Eaton Bray Hall - Gina Flitton 07846421756
- Thursdays Intermediate Boxercise, 7.30-8.30pm, Dagnall Village Hall, Josh Thompson 07456 574405 or jtptinfo@gmail.com
- Fridays Tap & Ballet Classes, JoAnn Latus School of Dance, 4-8pm, Eaton Bray Village Hall, 01582 620576
- Fridays Reek Fit class, Edlesborough Mermorial Hall 10 - 11am

Village Diary April 2017

Fridays (term time)	Kids Club 6:00pm to 7:00pm Grace Baptist Church, Moor End, Edlesborough (across from the post office) Frances King 01582 475896
Fridays (term time)	"Little Luvvies" baby ballet classes 10am-11.30am. Contact Emma Whittemore on 01525 376124
Fridays	Stay & Play toddler group, 'Musical Monkeys' at the Eaton Bray Village Hall, 10-11.30am, £4.50 for one adult and child, £1 for extra children/adults, 0-6months free
Saturdays	Jazzercise, 9.30-10.30am, Eaton Bray Village Hall, Angela Veryard, 01525 715208
Saturdays	KFPA Musical Theatre classes 4+yrs www.kfpa.co.uk, 10am, Edlesborough Memorial Hall
Saturdays	Bootcamp Fitness, 9-10am, Dagnall Recreation Ground, Josh Thompson 07456 574405 or jtptinfo@gmail.com
Sundays	Sunday Worship at 10:30am and 6pm Grace Baptist Church, Moor End, Edlesborough (across from the post office). Alister King 07572 395687

Monthly

1st Monday	Eaton Bray Parish Council Meeting, 7.30pm, The Coffee Tavern (except January-2nd Monday)
1st Monday	Eaton Bray W.I. Meeting, 7.30pm. Eaton Bray Methodist Church Hall. Contact Margaret Jones on 01525 220991
1st & 3rd Tuesday	Dunstable & District Orbit (social and charitable) Club meet at Dunstable Rugby Club at 8pm. For details contact 01525 222441 or 01582 755147
1st Saturday	St. Mary's Church, Eaton Bray Coffee Morning & Plant Sale, 10:30am - 12 noon
2nd & 4th Tuesday	TOTS, St Mary's, Eaton Bray, 2pm
2nd Tuesday	Dunstable & District Local History Society meeting, 7.45pm, Methodist Church Hall, Dunstable (opposite Wilkinson)
2nd Tuesday	Edlesborough W.I. Meeting, 7.30 pm, Edlesborough Memorial Hall
2nd Wednesday	St.Mary's Ladies Guild, 2pm, St.Mary's, Eaton Bray
2nd Wednesday	Eaton Bray & Edlesborough Lions Club, 7.30pm, The Coffee Tavern
2nd Thursday	CAMEO Coffee, tea & chat, 10am-12noon, Edlesborough Methodist Church
2nd Saturday	Workshops Dynamic Yoga 9.30-11am £10 Eaton Bray Coffee Tavern, Keira 07936 693696
3rd Thursday	Edlesborough Parish Council Meeting, 7.30pm, Memorial Hall
3rd Sunday	Lunch club 11.30 to 2.00pm, Eaton Bray Village Hall, Chris Hewitt 222288
4th Tuesday	The Filling Station, 7:30pm, Bellows Mill
Last Saturday	Coffee Morning, 10:30-12 noon, Edlesborough Methodist Church
Last Sunday	Messy Church, 3-5pm, Salvation Army, Booth Place, Eaton Bray, 07932 057490

Other Regular Events

2nd	Beds Area Narrow Gauge Model Railway Club Meeting, 11.30am-4.30pm, Eaton Bray Village Hall
8th	Cafe Community, 11am-1pm, Eaton Bray Methodist Church
14th	Leukaemia Research Coffee Morning, 2 Dunstable Road, Dagnall 10.30am. All welcome.
18th	Dagnall and Kensworth Friendship Club, Lunch at 1pm at the Crosskeys at Pulloxhill. Pick up from Dagnall 11.30am, Edlesborough and Eaton Bray 11.40am and Kensworth 11.50 am.

One Off/Annual/Irregular Events

5-13th	Eaton Bray Lawn Tennis Club Easter Camps
6th	Eaton Bray W.I. Coffee Morning, 10-12 noon, Eaton Bray Methodist Hall
9th	Carnival Queen & princess Draw 11:15, Eaton Bray Village Hall
26th	Wednesday Club Age Concern Coffee Morning, 10-11:30am, Northall Village Hall

Village Info



EDaN Community Transport

Viv Hill: 01442 842623

Village Hall Bookings

To book your local village hall for an event please contact the following:

Northall: Lorna Cabbage Tel: 07857 318696 Email: northallvhbookings@gmail.com

Eaton Bray: Norman Lee Tel: 01525 222831

Email: bookings@ebvh.co.uk Website www.ebvh.co.uk

Dagnall: Elizabeth Coates Tel: 01442 842550

Edlesborough Memorial Hall: Penny Pataky, Tel: 01525 229358

Email: manager@edlesborough-pc.gov.uk

Police Contact Numbers...

making neighbourhoods safer together

General Assistance (Recommended Number): 101 Emergency: 999

Bedfordshire Police (Eaton Bray)

Leighton Buzzard Police Station/Kathryn Horgan: 01582 473411

Typetalk: 18001 01582 473418

Email: LPT.LeightonBuzzardLinslade&Rural@bedfordshire.pnn.police.uk

Thames Valley Police (Edlesborough, Dagnall & Northall)

PCSO Jackie Dodson Mobile: 07800 703 524

Email: NHPT@thamesvalley.pnn.police.uk

Defibrillator Locations

These units are registered with the Ambulance Services. To access them, please phone 999. You will be given the access code and the location of the unit will be confirmed. The defibrillator is easy and safe to use. The units can be found on the outside walls of the following locations:

Dagnall: Red Lion Public House

Eaton Bray: The Coffee Tavern

Edlesborough: Edlesborough Memorial Hall

Northall: The Swan Public House

Eaton Bray



Helpline: 07930987064

Manned phone hours: 9am to 5pm,

Monday to Friday

(An answering service is available for out-of-hours calls)

Call us if you want help with getting to the surgery/hospital, collecting prescriptions, minor errands, form-filling, letter-writing, small d-i-y jobs, walking your pet or other small needs.

EATON BRAY WI
INVITE YOU TO A
COFFEE
MORNING

THURSDAY 6TH APRIL
10-12

EATON BRAY
METHODIST HALL

ENTRANCE £1
INCLUDING REFRESHMENTS

**CAKES/GIFTS/BRIC A BRAC/
RAFFLE/REFRESHMENTS**

Wednesday Club

Age Concern Northall

We require a volunteer driver and a conductor for our mini bus on one Wednesday each month to transport our members to and from Northall hall. It will require 2 hours in the morning to collect and again 2 hours in the afternoon to return members home.

Full support training will be give for both positions, which are both important to the running of the club.

Interested.... please call Peter Barrow on 01442 842364 or Ken Coates 01525 220868



EATON BRAY PARISH COUNCIL



Please come and help to run your village
BECOME A PARISH COUNCILLOR

The Parish Council is nine members of the public

We come to each Parish Council Meeting in the Coffee Tavern on the 1st Monday of each month and spend on average around six-eight hours each month advising and helping to run our village. Being a Parish Councillor in Eaton Bray Parish gives you a real opportunity to make a difference to the community.



MAKE A DIFFERENCE

At present we have **THREE** vacancies – will **YOU** come *and* join us?
Please contact the Parish Clerk – contact details below.



You can also view our website for more details



Heidi Head, Parish Clerk
Email: clerk@ebpc.co.uk - Telephone: 01525 221464 - Website: www.ebpc.co.uk
Office Hours: Tuesday/Thursday/Friday 09:30-13:30hrs [messages can be left on answerphone]



Services at St Mary's Church

SUNDAYS : **8.00am** HOLY COMMUNION
 10.00am PARISH SUNG HOLY COMMUNION

On Third Sunday of each month:

10.00am – WORSHIP FOR EVERYONE a shorter, less formal service for families. (For anyone wishing to attend a service where Holy Communion is offered, there is a Family Communion at 10.30am at All Saints' Church, Dagnall, where visitors are assured of a warm welcome).

WEEK-DAYS:

Tuesday: **2.00pm** TOTS (Tots on Tuesdays) (2nd & 4th Tuesdays)

Wednesday: **10.00am** Holy Communion

EVERYONE WELCOME AT THESE SERVICES

Wonderful Wednesdays

Over the years I'd seen the Wednesday Club mini bus many times, so having reached my three score years and ten (plus a couple more) I decided to give it a try. It probably won't be my cup of tea I thought, but how wrong was I!

The bus picks you up and takes you home, and some very nice gentlemen will give you any assistance you need to board. The club is from 10am till 3pm every Wednesday, the cost being £9 per day. The price includes transport both ways, tea and biscuits to welcome you, a two course lunch and afternoon tea and cakes. The day passes so quickly, there is so much to do! There are many games i.e. scrabble, cards, dominoes, which is also a good way to make new friends. We also have several games of bingo and a raffle draw, with a choice of useful prizes.

Bargains can be had on the bring and buy table and an extensive supply of books are available. A trip to Wyevale Garden Centre, with lunch and a pudding and mince pies to take home was a very lively and happy event (all inclusive of the £9!)

Should you need assistance and have limited mobility on these trips, wheelchairs and willing friendly helpers are on hand for you.

Very recently we enjoyed a "Valentine Lunch" provided by Waitrose and cooked by Ken Coates and his two very able assistants, it was a superb meal (fresh salmon no less) plus cheese and biscuits and bunches of daffodils to take home.

You can join in as much or as little as you wish, so please come along and give it a try! I'm so glad I did, it's a wonderful midweek treat.

✉ Eunice Williams

Please contact 07854 230243

for more information

AGE
Concern

Wednesday Club
Age Concern

Coffee 

Morning

Wednesday 26th April
Northall Village Hall

10am to 11.30am

Admission 50p

Everyone Welcome

Eaton Bray with Edlesborough Parish News

Church Warden & Pastoral Matters: Catherine Hayden (01525 220527)

Reader: Gordon Gray (01525 220136)

Website: www.stmaryseatonbray.org.uk

Facebook: St Mary's Eaton Bray

We tend to take our leisure time for granted these days but, before the introduction of bank holidays, Christmas Day and Good Friday would have been the only two days of leisure granted to most working people. Christmas Day and Good Friday - the days we celebrate the birth and the death of Jesus.

Many families have their own traditions of what they do on these two Holy Days; and Good Friday is a day when there are plenty of traditions to choose from; for example, given reasonable weather, gardeners will be sowing their potatoes. The traditional food for the day includes fish, rather than meat, and hot-cross buns; a rare treat when dripping with melted butter.

The name Good Friday probably evolved from an earlier designation – God's Friday – in the same way that 'goodbye' evolved from 'God be with you'. For Christians the emphasis of Good Friday will be on both Jesus and God. In the morning, many hundreds of Christians in Dunstable and Leighton Buzzard, and many thousands of Christians nationwide, take part in marches of witness. Then, in the afternoon, services are held which reflect on Christ's suffering, either a three hour service from noon until 3pm or a one hour service from 2 to 3pm, commemorating Christ's final hours on the cross culminating in his death.

The church has always understood that the day commemorated on Good Friday was anything but happy. On that day, Jesus underwent one of the most dreadful tortures ever devised by mankind so the day has, historically, been marked by sadness, mourning, fasting, and prayer. But the Christian conviction is that the day was also the one in which God's love was truly revealed. Out of Jesus' dreadful anguish God raised Him from the dead to new and abundant life. And for his followers the pain of Good Friday, the not knowing of Holy Saturday, gave way to the joy of Easter Day. So in some parts of Europe, the day is not just called "Good," but "Great" or "Holy" Friday.

So it can be for each of us whenever we experience darkness, pain or suffering, whether it be on Good Friday or on any other day. My prayer is that, on Good Friday you will take the time to reflect on the suffering of Jesus and on the love of God. Each of us needs to know the presence of a Saviour who shares our suffering and experience the Easter message, the great affirmation that pain and death do not have to have the final word and that God's redeeming love can still bring us hope and joy and pleasure even in the darkest and most difficult times. And if we can catch a glimpse of such resurrection experiences in our own lives then we can proclaim with confidence the Easter message "The Lord is risen – He is risen indeed. Alleluia." A happy and glorious Easter to you all.

✠ Gordon, Reader at St Mary's Eaton Bray

Nigel's Thoughts

Methodist Minister



Dear Friends,

On Easter Day Christians celebrate the victory of God over evil, wrongdoing and death. We believe that the power of these things is destroyed because of the Lord Jesus Christ's sufferings and death upon the cross, and the way in which God raised him from the dead.

At this time the Easter victory of God's love for all people would seem to many people to be difficult to square with the way things are in the world.

Difficult, that is until we see how God's love operates, until we see that God himself, in Jesus, suffers with those who are oppressed, hurting and having to endure so much day by day.

Himself a homeless refugee, threatened and hounded out of town Jesus knows what it is to carry a cross, and to suffer and die on it too, although he himself had done nothing wrong.

As we see in the faces of so many of God's children, dislocation, fear, hunger, and other deep needs we are looking right into the face of God who loves and cares for each one.

One of the Easter hymns sung in churches today has the following verse:-

"In every insult, rift and war,
where colour, scorn or wealth divide,
He suffers still, yet loves the more,
And lives though ever crucified". (Brian A. Wren)

Thank God that he is not distant or unfeeling, but shares with us and understands our troubles and the sufferings of the peoples of this world. And let us then be those who are doing all that we can to transform the circumstances of those who are in any kind of need, using all the resources at our disposal. We can pray (knowing that God has already got his sleeves rolled up and is at work!) and we can give generously. We can also act and live as though we ourselves are not the most important people in the world (following the example of Jesus).

Let us do all that we can and cooperate with the God who turns death and defeat into Resurrection and the victory of New Life!

Happy Easter!

Nigel

Tribute to Beryl Jarvis (1920-2017)

Beryl Mary Horton was born in Luton on the 19th January 1920, and was the only child of Ernest and Sarah Horton.

After being demobbed from the ATS she returned to Luton, where she met and married Fred Jarvis in 1949.

They purchased their bungalow in Eaton Bray in 1961 and as a very outgoing and sociable couple were quickly accepted into village life. They were instrumental in the success of the Eaton Bray Produce Association.

Beryl was also a member of the WI in Eaton Bray and Secretary of the Eaton Bray Gardening Club. Beryl's husband Fred died in 2003.

Beryl died on 5th February in the Luton & Dunstable Hospital, age 97, after a short illness



UNICORN WINDOWS LTD

“WHERE QUALITY & SERVICE ARE NOT A MYTH”

www.unicornwindows.co.uk

Tel: 01525 854272



Unit 3 Youngs Industrial Estate, Stanbridge Road, Leighton Buzzard

comput@mation
computer support & services

Computer Support for Business & Home

Problem Solving:

- Virus & Spyware Removal
- Internet & Email Assistance
- Fault Diagnostics
- Repairs & Upgrades
- Slow Running PC's

Sales:

- Desktops, Laptops & Tablets
- Printers & Peripherals
- Software

Services:

- PC, Mac & Linux Support
- Wired & Wireless Networks
- Data Recovery
- Install & Set-up
- Health Checks

On-site Visits:
Office Hours & Evenings
by appointment

For friendly advice call John Wallace: 07968 536068 or 01525 261381
Email: john@computamtion.co.uk
Web: www.computamtion.co.uk

Computamtion Services Ltd - Est.1999 with over 25 years experience
9a Lower Way, Great Brickhill, Buckinghamshire, MK17 9AG

Carpet & Upholstery Cleaning

Professional & Local

All work guaranteed - not happy, don't pay

Powerful equipment means drier much quicker than other methods

100% Guaranteed no chemicals left in carpet when dry therefore will not easily resoil & perfectly safe for children & pets

Recommendations account for 90% of my work

Absolutely no hard sell

Telephone Colin for a Free Quote

DEEP-CLEAN

01525 851 811

www.deep-cleaners.co.uk

Email: colin@deep-cleaners.co.uk

EDLESBOROUGH SURGERY

11 Cow Lane Edlesborough

Enquiries - 01525 221630 Appointments - 01525 220333

www.edlesboroughsurgery.co.uk

**Dr J R Bell, Dr Heather White, Dr Stephanie Johnston
Dr Kirsten Riemer, Dr Charlotte Fisher**

Friendly village Practice offering a wide range of health services including coils/implants, minor surgery, travel advice, in house blood tests, on-line appointments and repeat prescription ordering. Nurse Practitioners offering acute clinics with same day appointments. Also, Midwife, Health Visitors in attendance. Local District Nurse service.

Long established training Practice with a rotation of qualified doctors.

EDLESBOROUGH PHARMACY

01525 223181

Pharmacist – Mitul Patel

Friendly reliable professional service at the pharmacy and well established delivery service to the villages. Professional advice always available.

All doctors/dentists/veterinary and hospital prescriptions dispensed.

Herbal/Homeopathic products available. In addition – Disability Aids, e.g. wheelchairs, walking frames, incontinence aids, Ostomy products, Malaria prophylaxis, Erectile dysfunction, Salbutamol supply without prescription. Flu vaccination available.



For all your painting & decorating requirements
 Domestic and Commercial
 call Max for a free estimate with no obligation
maxbro@btinternet.com

D & E HINES

High-Class Butchers

Quality Beef, Pork & Lamb
 Grade A Poultry

BBQ & Sausage Speciality

Renowned for 'Bunkers Sausages'

Telephone: 01525 220413

98 High Street, Eaton Bray

30 Years Experience
 Domestic & Commercial Security



Burglar Alarms
Redcare Monitored Systems
Intercoms
CCTV
Access Systems
Locks



CERTIFICATE NO. NAC/G/2113

Quality Installations – Competitive Prices
 Insurance Approved Free Surveys

AAA SECURITY

01525 378222

Email: sales@aaasecurity.co.uk

www.aaasecurity.co.uk





Local family run business - Not a franchise

All chemicals used are Eco-friendly, non-toxic, non caustic and non allergenic
All work guaranteed and fully insured

All products are Child, Pet and Pregnant Safe

- Ovens & Hobs
- Extractor Hoods
- Microwave Ovens
- Agas
- Fridges
- Carpets
- Rugs
- Upholstery
- BBQs
- Freezers



☎ 01525 22 19 22 or 0800 122 3393

🌐 www.ecotechovenandcarpetcleaning.co.uk

@ info@ecotechovencleaning.co.uk

Dominic Woolcott

Painter & Decorator



- Internal & External
- Plastering & Coving
- Insurance Work
- 20 Years Experience
- Competitive Rates

**For a professional job call:
01525 229682 or 07747 042879**

P. DYER ELECTRICAL

For all your Electrical & Testing & Inspection needs

- Re-wires
- Testing & Inspection
- Security Systems/Lighting
- LED & Low Energy Lighting
- CCTV Systems
- PAT Testing
- Fuse Boards
- Fault Finding/Repairs

Fully insured, Part P registered, all work guaranteed.
Fast, friendly, reliable, local electrician. For a free,
no-obligation estimate, call Paul on:



Tel: 01525 222109
Mobile: 07850 682815



David John Harris
Green Fingers
(Established 1992)

All Fencing Work • All Gates • Paving • Patios
Driveways • Shingle • Hedge Setting and Cutting
Grass Cutting • Turfing Specialist • Exterior
Painting Service • Sheds Small Building Work
Trees & Shrubs Supplied

Tel/Fax: 01525 221745
Mobile: 07889 143713

Barry Cato
Motor Repairs
Est. 1981

Servicing, repairs and MOT's arranged

Workshop at:
r/o Norfolk House Farm, Harling Road
Eaton Bray, Dunstable, Beds, LU6 1QY

Tel: 01525 221681 (workshop)
07836 650015 (mobile)

GYM & TONIC

WANT TO GET FIT, HAVE A HEALTHIER LIFESTYLE & IMPROVE THE WAY YOU LOOK & FEEL?
The following can be provided in our Gym in Edlesborough or in your home

* **A Health & Fitness Consultation** *
* **Personal Training** * **Massage** *

Ruth Webb Dip. PT & ST, Member of: Inst of Sports Therapists & Register of Nutritional Therapists

Tel:01525 223074 Mob:07812 163979

D NICHOLSON
PLUMBING REPAIRS
and **INSTALLATIONS**
NO JOB TOO SMALL

• Emergencies • Free Estimates
• No call out charges

Dave Nicholson

MOBILE: 07976 975604
HOME: 01525 872335

City & Guilds Qualified

For all your building needs look no further



BRIGGS

BUILDING & CARPENTRY SERVICES



Established 1981

For a professional, friendly service call:

(01525) 221767

(07970) 214439

Domestic & Commercial

Extensions

Alterations

Patios

Renovations

Kitchens

Decking

Conversions

Driveways

Garden Walls

Narrow access mini digger, skip loader
and dumper services available

All Work Guaranteed

Free Estimates



Flicks & Bangs

HAIR SALON

A warm, friendly salon offering a wide range of bespoke hair services for all the family. Feel free to pop in for a complimentary consultation.

www.flicksandbangs.com

Flicks & Bangs

66 High Street
Eaton Bray
Nr. Dunstable
Beds LU6 2DP

01525 221252


Opening Hours

Mon Closed
Tue 9 am - 5 pm
Wed 9 am - 5 pm
Thu 9 am - 8 pm
Fri 9 am - 7 pm
Sat 8 am - 4 pm
Sun Closed



Pinstripes **signs**
HAVE MOVED
 12 HARMILL IND EST
 GROVEBURY ROAD
 LEIGHTON BUZZARD
 BEDS LU7 4FF
COME AND VISIT US
 SIGNS-GRAPHICS-CLOTHING
 VANS-SHOPS-BANNERS-BUSINESS CARDS
 BOARDS-STICKERS-CANVAS PRINTS
 MAGNETIC CAR SIGNS-WINDOWS
01525 851080
07973 167779
www.pinstripessigns.co.uk
 Join us on Facebook - Pinstripes Signs Graphics Clothing

WASHING MACHINE REPAIRS
 ALSO
 DISHWASHERS, TUMBLE DRIERS,
 AND ELECTRIC COOKERS



Call
ANDERSON D.R.S.
01582 665764
www.andersondrs.co.uk
 SALES AND RENTALS AVAILABLE

Lee Hutt 
 Heating & Plumbing Services

Bathrooms
 DESIGN & INSTALLATION
TILING
HEATING
TAPS
Leaks
CALL OUTS
Free Estimates



 01525 222145  07971 559185

Patricia's Cuisine
 Catering For All Occasions

- Buffets, Dinners •
- Christenings, Weddings, Funerals •
- Promotions & Business Lunches •

For Enquiries & Menu
 Meadside Farm, 104 High Street,
 Eaton Bray, Bedfordshire, LU6 2DP
Telephone: 01525 222174



P.J.BRINKLOW
Electrical Contractor
01525 220469
07860 781330
43 Pebblemoor
Edlesborough

*“A wonderful
place to be!”*



Eaton Bray Academy



Tel: 01525 220468

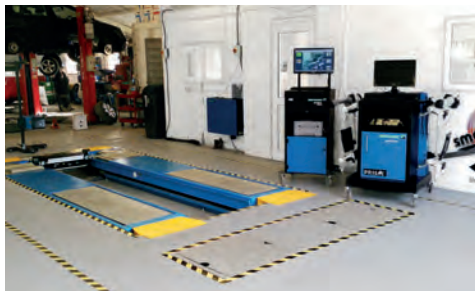
Email: admin@eba.ec

www.eatonbrayacademy.co.uk

smartAUTOGROUP

ESTABLISHED LOCALLY FOR 14 YEARS

Fully equipped Car Bodyshop, Service Workshop
& MOT Bay



- New MOT Bay
- 4 Wheel Alignment & Tyre Fitting
- Specialists in Complete Classic Car Restoration
- Dealer Trained Technicians
- Ford, Vauxhall, VW, Audi
- Extensive Experience in Prestige Car Paintwork and Repair
- One-Stop-Shop for all your Servicing, Repairs, Bodywork & Maintenance
- Accident & Vandalism Damage
- All Insurance Work Undertaken - We can also cover your Excess and provide a Courtesy Vehicle (subject to T's & C's)
- Mobile Car Body Repairs – Fully Equipped Vans that come to your Home or Office.
- Alloy Wheels – Dents - Bumpers – Chips – Scratches - Scuffs
- Free Collection and Delivery, Loan Cars and Lifts when required

We pride ourselves on always being competitive for the right job.

**£10 OFF WITH
THIS ADVERT**



Call us on **01582 664772** or visit **www.smartautogroup.co.uk**

Units 17 & 18a, Icknield Way Farm, Tring Road, Eaton Bray, Dunstable LU6 2JX

Edlesborough Festival 2017

16th - 18th June: Save the Date!

The Church on the Hill will soon be coming to life with the sound of music - and it looks to be bigger, bolder and more beautiful than ever before!

Save the dates and join the audience for two nights of magical and mesmerising music in our beautiful historic venue. (Sunday 18th will bring additional festival delights).

Confirmed artists include:



Sarah Munro - a delightful, young talented singer songwriter who has been touring the UK (including an appearance at the London Palladium),

supporting the legendary Paul Carrack. Jamie Callum selected Sarah to perform in a special showcase, stating - 'There's some real raw talent here!' Sarah has recently released her debut album 'Say Hello To You' and her delicate pure vocal tone is reminiscent of Eva Cassidy.

Kimber's Men - Do not miss the harmonies, humour, and stirring songs of the sea from the UK's leading shantie 'side'. All the way from Yorkshire, Kimber's Men will entertain and enrich, stir your emotions, leave you smiling and singing songs of the sea! We welcome them back from an unforgettable 2016 performance at the festival and hope to hear the solo rendition of 'Ol Man River by baritone member John Bromley. Don't miss!

This year Kimber's Men will be offering singing workshops with local children at Eaton Bray and Edlesborough Schools. The workshop will culminate in the 'Kimbers Children's



Choir' who will perform at the festival, taking the stage with this internationally renowned group.

The Dicemen - Based out of Watford, The Dicemen are one of the leading folk/post-punk/indie acoustic trios in the area! With a line-up of guitar, mandolin, bouzouki, banjo and acoustic bass, they offer a collection of original songs alongside a spin on songs you may know from the last few decades.

Starlight Barking are a folk duo from Edlesborough, playing a mixture of original and traditional tunes as well as acoustic covers. Siblings George Brandon, guitar and vocals, and Holly Brandon on fiddle, have been playing music together for as long as they can remember. Starlight Barking have performed at venues all over the country from HMS Warrior to Shrewsbury Folk Festival.

Mary Holland - Stirring cellist and songwriter from Wild Willy Barrett's French Connection, Mary will be accompanied on guitar.

Emily Noithip - her cello will charm you! Sit back and enjoy this talented performer who features regularly at 'The Guildall'.

Regina Whyatt - Piper from the RAF Halton Pipes & Drums. She has performed at Windsor Castle, the Edinburgh Festival and at countless events nationwide. Regina will once again open the festival with the stirring sound of the bagpipes.

The festival serves a range of local ales and beers, soft drinks, refreshments and will also be offering a flower arranging workshop, a Sunday service and listen out for the bell ringing.

Come for the music, come for the atmosphere, come for the view, your community and a chance to enjoy the splendour and rich history of our magnificent St Mary's Church/Church on the Hill.

This wonderful landmark recently featured on regional news following the rediscovery

of the Edlesborough Rose, a precious artefact and medieval memorial brass that was lost for 33 years and tracked down, thanks to the hard work and perseverance of 'Friend' Catherine Hayden and Rachel Morley of the Churches Conservation Trust.

Money raised from the festival help preserve



All Saints' Church, Dagnall

Services in April 2017

Sun. 2nd April	9.00 am	Eucharist
	10.30 am	Morning Service with Holy Communion
Sun. 9th April	10.30 am	Morning Service
Fri. 14th April	6.00 pm	Special Service for Good Friday

Easter Day

Sun. 16th April	9.00 am	Eucharist
	10.30 am	Family Service
Sun. 23rd April	10.30 am	Family Service
Sun. 30th April	10.30 am	Morning Service

Sunday School meets each Sunday at 10.30 am except when there is a Family Service.



Eaton Bray Methodist Church

Our first service in February was a very joyful one as it included the baptism of Reuben Eden David Bursnell, a delightful, calm and contented four-month-old boy. Our Minister, Rev Nigel Bibbings, led the service and his address was on the theme of striving, like the Apostle Paul in Philippians Ch 3, "to win the prize for which Christ Jesus has already won us to himself". He likened the Christian life to a Marathon race, a lifelong endeavour, always looking forward, never behind. The February Cafe Service was both enjoyable and deeply meaningful; Stephen Poxon encouraged us to participate in a spiritual health check. As we shared our recent experiences and challenges in small groups we found a great deal of support and empathy, underpinned by the inspiring knowledge that God us always there for us, whatever our situation. On the third Sunday the service was a local arrangement led by members of the Wednesday Bible Study Group. Based on their study of Mark's Gospel and guided by the Good Book

the rich heritage of the church and attract more visitors from near and far.... ticket information soon!

www.edlesboroughchurch.org.uk

Search on Facebook for our page - Friends of the Church on the Hill, Edlesborough

commentary, they examined how Christ's followers come to recognise him as King. We learned that recognition can appear in the most unlikely places and that faith is the gracious work of God in us. On the fourth Sunday, Joan Gregory made a welcome return, preaching on the Transfiguration of Christ and the way he transforms peoples' lives. Our minister, Nigel Bibbings took the Communion Service on the first Sunday in March. His sermon focused on guidance in the ways of developing a personal private relationship with God through following the teachings of Jesus; how to praise, pray, and act charitably towards others in a quiet and unpretentious manner.

Date for your Diary:

Cafe Community

Saturday 8th April 2017 11am – 1pm

We will be delighted to see you if you come to join us for a cup of tea/ coffee and/or a light lunch



The Big Litter Pick

EPC thanks all the volunteers who gave up their time on Saturday 4th March for the Big Litter Pick. Please see a separate article in this edition of Focus from Lorna Cabbage for more information. Sadly there is often too much litter in our community. We are all responsible for looking after our villages so please take your rubbish home or put it in one of the many green litter bins located in the villages.



Neighbourhood Plan Pre-Submission Plan

Following the analysis of the responses to the Edlesborough Neighbourhood Pre-Submission Plan the Steering Group has made some changes to the Neighbourhood Plan. At the time of writing this report it is anticipated that the Neighbourhood Plan will be submitted to EPC either at the ordinary March meeting of the EPC or at an Extra Ordinary Meeting of the EPC before the end of March. EPC then plans to adopt the plan and formally submit it to AVDC for approval.

CALA Homes & Swallowfields

- At the time of writing, CALA Homes have not submitted their application, to build 89 new homes on the Swallowfields site, to AVDC.
- Once this is submitted EPC will respond to the application citing planning issues and if necessary will call an extra-ordinary meeting should the deadline for a response fall before the next scheduled EPC meeting.
- The application can take approximately three months from submission to determination date.
- Parishioners and EPC have 21 days to respond to the application once it is submitted to AVDC.
- Once the application is submitted parishioners wishing to object or support the application should do so via the AVDC website www.aylesburyvaledc.gov.uk/search-planning-licensing-applications

Concern raised over access gate at the junction of Ford Road on Pebblemoor

Parishioners with concerns over the usage of the gate into the field on the corner of Pebblemoor opposite the junction with Ford Road should report their concerns to:

- Bucks Highways via the website www.buckscc.gov.uk/services/transport-and-roads/report-a-problem/tell-tfb/
- AVDC via the website www.aylesburyvaledc.gov.uk/search-planning-licensing-applications

Currently EPC are not aware of any site logistics plan citing this access point or field being used for storage for the High Street development. EPC has raised parishioners concerns with:

- Clare Grey the Planning Officer for the High Street development to find out whether this activity is permissible.
- The Transport for Bucks Local Area Technician

County Cllr Avril Davies will also speak with the local Transport for Bucks Local Area Technician about the issues in addition to discussing the resurfacing at the top end of Ford Road.

Thames Valley Police Report

PCSO Jackie Dodson was unable to attend the February EPC meeting. She submitted the following via email:

During the past week and a half PCSO Dodson has carried out School patrols and a survey of the parking issues on the High Street outside Edlesborough School. She noted that the Pebble moor car park is often almost full in addition to cars being parked on the High Street. Residents of the High Street have complained about parents blocking their driveways. Parking issue on the pavement and

grass verges on the Leighton Road near Sparrowhall Farm has also been addressed.

Crime figures from 1st September 2017:

Criminal Damage = 1

Theft from motor vehicle, = 4

Burglary = 5

Burglary non-dwelling. = 1

Burglary attempt = 1

Hare Coursing = 2

Hedges

EPC reminds parishioners to ensure that the planting around the boundaries of their properties does not overhang the pavement or road way, obstruct drivers line of vision or cause a danger or inconvenience to others.



Edlesborough Cricket Club

This season ECC will be reinstating the cricket nets on the corner of the cricket field on Edlesborough Green. Extra netting will be installed with the aim to prevent the cricket balls being hit out of the nets into the allotments.

Grit Bin

EPC are investigating the feasibility of installing a grit bin at the junction of Studham Lane and Dunstable Road, Dagnall.

Edlesborough Memorial Hall Improvements

EPC have appointed a company to install sound-absorbing panels in Edlesborough Memorial Hall with the aim to improve the acoustics of the hall.

Streetlights

Please report failed streetlights in Edlesborough, Dagnall and Northall to the Clerk for repair.

When making a report please ensure you provide the Clerk with the information displayed on the lamp post.

Allotments

Edlesborough Parish Council currently has vacant allotments at the Cow Lane, Dagnall and Northall site. Anyone wishing to take on an allotment should contact the Clerk. Fees are £2 per pole and plots range in size from 10 – 20 poles.



Speedwatch

The EDaN Traffic Management team are looking for volunteers to help with their new Sentinel device. If you have an interest in slowing down traffic in the villages or are concerned about Road Safety, please contact Louise Turner on 01442 843123 or by email at louisefanthorpe@yahoo.co.uk

Edlesborough Parish Council Meetings

The next Edlesborough Parish Council Meetings will take place as follows:

Edlesborough Memorial Hall, Thursday 20th April 2017 This evening will include the Annual Parish Meeting where the council will review the achievements of the past year and set out the plans for the future. Parishioners are invited to raise issues and debate them with the council.

Edlesborough Memorial Hall, Thursday 18th May 2017 This evening will include the AGM and will be followed by the Ordinary Parish Council Meeting.

The meetings will commence at 7:30pm.

All Parishioners are welcome to attend all Ordinary Parish Council meetings and may ask questions, raise issues and give suggestions during the Open Forum before the formal start of the meeting. The full minutes of the Parish Council meetings are normally available to view on the website or from the Parish Clerk.

Edlesborough Parish Council Contact Information:

Clerk: Miss Penny Pataky *Office hours Mon – Fri 10.30am – 2.30pm (Excl. Wed)*

Email: clerk@edlesborough-pc.gov.uk 01525 229358 Website: www.edlesborough-pc.gov.uk

Facebook: www.facebook.com/EDANParishCouncil

Eaton Bray Lawn Tennis Club 'Easter Camp' 2017

Do you want your kids to have an enjoyable and active Easter school holiday?

Eaton Bray Lawn Tennis Club can help. Your kids will have fun, enjoyment, exercise, and spend time making friends with other village kids.

Tennis club: Wed 5th April to Thurs 13th April

Join Sara and our local junior coaches for a fun 2 weeks, or as much of it as you

wish.

Our village is privileged to have Sara Leavy. Sara is a local girl like us and is also an LTA level 3 coach and PTR pro. Sara has been coaching full time for 7 years and playing tennis for over 20 years. She has played tennis since she was 4 years old and has continually represented Bedfordshire country tennis from a young age. Her current LTA rating is 3.2

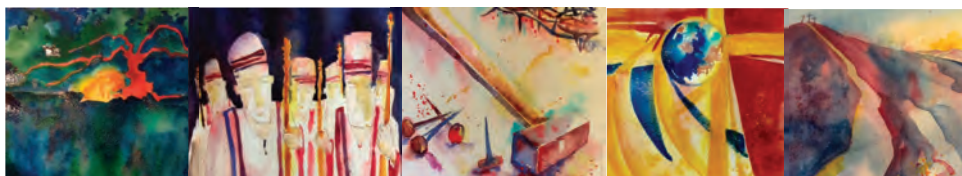
The Reading Circle

Our Reading Circle has been meeting for many years on the first Wednesday of the month at 10 a.m. at members' houses, at present in Stanbridge, Eaton Bray, Totternhoe and Dunstable. We are keen to invite new members.

The flavour of our recent books has been 'The Hare With Amber Eyes' by Edmund

de Waal, 'The Little Coffee Shop of Kabul' by Deborah Rodriguez, 'Knots and Crosses' by Ian Rankin and 'Sunrise' by Victoria Hislop.

If you are interested in coming along to meet us, please call Pat on 01525 210294 or Lyn on 01525 220731.



Prayer Stations

Praying for our Community & Holy Week Prayer Stations

featuring the paintings of Jenny Hawke (as seen on Songs of Praise)

Come and join us at The Salvation Army, Booth Place

Monday to Thursday 10am -7pm (free 'One Friday' booklet)

Tuesday 11 April - 7pm Film 'The Risen'

Thursday 13 April - 7pm Maundy Thursday Supper Reflection

For more information and to book please contact Hilary Chadwick (Envoy) on

07932 057490; hilary.chadwick@salvationarmy.org.uk

EASTER TENNIS CAMP 2017

EATON BRAY LAWN TENNIS CLUB



EATON BRAY EASTER TENNIS CAMPS 2017

WEEK 1			Weds 5 th April	Thurs 6 th April	Fr 7 th April
WEEK 2	Mon 10 th April	Tues 11 th April	Weds 12 th April	Thurs 13 th April	

WEEK 1 (3 day week)			WEEK 2 (4 day week)	
Costs:	Member	Non-Member	Member	Non-Member
Week	£30	£36	£40	£48
Day	£11	£13	£11	£13

Courses are run by Club Coach Sara Leavy – PTR Pro and LTA level 4 licensed coach with CRB and Emergency First Aid.

All you need is a drink and a snack – all equipment is supplied. Please wear sports clothing and suitable trainers. All ages 4-18 catered for.

Time: 1) Reception – Year 4 at 9-11am

And **2)** Year 5 – Year 11 at 9-11am

Venue: Eaton Bray Tennis Club, School Lane, Eaton Bray LU6 2DT

Book now and guarantee your place.

Please call Sara Leavy on **07561571578** for more information.

Name.....

Date of birth...../...../.....

Session#.....

Contact number:.....

Mobile number.....

Address: :.....

Email address.....

Weekdays required:.....

School attended:.....

Medical issues:.....

Please fill in the form with a cheque payable to EBLTC, and send to:
Tennis Camp, 27 Dove Tree Road, Leighton Buzzard, Beds LU7 3UP



EATON BRAY PARISH COUNCIL



HIGHLIGHTS OF THE MINUTES

A full/detailed copy of the minutes for Eaton Bray Parish Council can be found on our website.

A hard copy of the minutes can also be viewed on the Parish Council's notice board at The Coffee Tavern.

Meeting of Eaton Bray Parish Council Held on

Monday 6th February 2017 from 7:30pm at the Coffee Tavern

Central Bedfordshire Council (CBC) – Councillor Ken Janes

CBC Website: www.centralbedfordshire.gov.uk

CBC Email: customers@centralbedfordshire.gov.uk

CBC Customer Services: 0300 300 8302

Your CBC Council representative - Councillor Ken Janes: email kwjanes@hotmail.co.uk
07767-496823

Bedfordshire Police

Your Local Policing Team: Non-emergency call **101** / All emergencies **999**

Vacancies - Parish Councillors

There are vacancies for Parish Councillors on Eaton Bray Parish Council.

Being a Parish Councillor in Eaton Bray Parish gives you a real opportunity to make a difference to the community. Interested? Please email the Parish Clerk (see contact details below) with a brief summary about you, your skills and why you would like to be a Parish Councillor.

Eaton Bray – Neighbourhood Plan

UPDATE: Please see the Neighbourhood Plan report printed in the FOCUS magazine.



Consultation on BT Payphone Removal

Central Bedfordshire Council recently carried out a consultation together with BT regarding the removal of BT payphones within the district. The Parish Council expressed the need to retain both phones within the parish. The final decision has been released by CBC: Knights Close – removal (non-usage in the past 12 months), Wallace Drive – to remain (usage within the last 12 months). Eaton Bray parish is to retain one BT phone box.

Outline Planning – Land Adjacent to Eaton Park

The Council has not seen any additional information to that presented to villagers by the developers. With regards to the proposed site and concerns raised by residents of the area suffering from water surface flooding, the Council would ask residents to take photographic evidence, to be used to verify these concerns should an application be submitted.

Parish Council Meeting Dates: Held in The Coffee Tavern (1st floor)

Monday 3rd April 2017 from 7:30pm

Monday 8th May 2017 from 7:00pm



Heidi Head, Parish Clerk & RFO

Email: clerk@ebpc.co.uk - Telephone/Fax: 01525 221464 - Website: www.ebpc.co.uk

Office Hours: Tuesday/Thursday/Friday 09:30-13:30hrs [messages can be left on answerphone]

Follow Eaton Bray Parish Council on Facebook and Twitter

Keep up to date with what is going on in the parish

town&country

in association with **FINE & COUNTRY**
fineandcountry.com™

Town & Country are delighted to announce the opening of their latest office in the village of Edlesborough, covering the local Villages including Eaton Bray, Northall, Totternhoe and Dagnall.

We are a local independent agency that has been successfully trading across Herts, Beds and Bucks for nearly 20 years. Our other offices are situated in Caddington, Markyate and Redbourn. We specialise in residential sales and lettings of all values in local rural communities.

For a personal service from an experienced team of staff who always go the extra mile, please contact our office for all your home moving needs. We look forward to working on your behalf in the near future.

Mark Bristow
Managing Director



Tel: 01525 222 333 | Email: edlesborough@towncountry.uk.net

ASPECT

YOUR LOCAL ELECTRICIAN
TOTTERNHOE
OVER 20 YEARS EXPERIENCE

ELECTRICAL

CONSUMER UNIT UPGRADES (FUSE BOARDS)
LIGHTING - INTERIOR, EXTERIOR & SECURITY
REWIRING
NEW INSTALLATIONS
TESTING & INSPECTION

ALL WORKS TO CURRENT WIRING & BUILDING REGULATIONS
PART P CERTIFICATED & FULLY INSURED



CALL STEVE ON
07976 283969 / 01582 665068
aspect@sparky.me



Edlesborough Flowers

Flowers, Gifts, Jewellery
& More...

2 High Street,
Edlesborough,
LU6 2HS
Tel: 01525 221920

Anne Johnson D.O. Registered Osteopath

6 Moor End,
Eaton Bray

01525 221958
07957 250682



R.J.O'CONNELL BUILDING SERVICES

EXTENSIONS, PATIOS,
DRIVEWAYS, ROOF REPAIRS
AND PROFESSIONAL
DECORATING SERVICE

TEL: 01296 681323
MOB: 07855 236726

Will Kimberley Garden Services 01442 255784

Phone for a free no obligation written estimate
wkgardenservices@btconnect.com

- High hedges a speciality
- Fences erected and repaired
- General garden tidy up's
- In fact any job in the garden!

EXCEEDING EXPECTATIONS IS JUST PART OF OUR SERVICE



If you're **selling**, **letting** or **buying** a home, make it happen with your local estate agent



01525 220605 • info@giblinproperty.co.uk
www.giblinproperty.co.uk

THE WORKTOP SPECIALIST

DELIVERING OUTSTANDING QUALITY & SERVICE FOR ALL YOUR WORKTOP & JOINERY NEEDS FOR OVER 50 YEARS

- FREE HOME MEASURING SERVICE
- CUTTING & EDGING SERVICE AVAILABLE
- VISIT OUR BRAND NEW SHOWROOM

Abbey Gate, Boscombe Road,
Dunstable, Bedfordshire, LU5 4FA

Tel: 01582 668 973 Fax: 01582 608 227
Email: sales@dunstablelaminates.co.uk
Web: www.dunstablelaminates.co.uk



@DLaminates



Dunstable Laminates



Over 30
Years
experience.
**FREE
Quotes**

Misty Double Glazing?

Over 30
Years
experience.
**FREE
Quotes**

KEEP YOUR WINDOW FRAMES...
... WE JUST REPLACE THE GLASS!

• UPVC • Aluminium • Or Wood

Because we replace just the glass the repair is a
Fraction of the cost of a complete replacement window.

BEFORE

AFTER

mistydoubleglazing.co.uk

QUALITY GLAZING SERVICES

01525 876808

WE ALSO REPLACE BROKEN...

• Glass • Handles • Hinges & Locks
AND REPAIR...Patio Doors & Conservatories!

Tel: 01525 22 22 64

Café masala

Exquisite Indian Cuisine

We Cater for Office or Private Parties and don't forget to try our Sunday Buffet

10% Discount on all Takeaway Orders Over £12

Fully Licensed & Air Conditioned

Open Seven Days a Week

Hours: 12 Noon to 2.30pm & 6.00pm to 11.30pm

Tel: 01525 22 22 64

63 Bower Lane · Eaton Bray · Dunstable · Beds · LU6 1RB
email: taraque@hotmail.co.uk · www.cafemasala.com

alto window cleaning

For a professional service.....

- Window cleaning
- Conservatory cleaning
- Fascia & gutter cleaning

07876 594186

AARON FENCING

ALL TYPES OF DOMESTIC & COMMERCIAL FENCING & DECKING WORK UNDERTAKEN

FREE ESTIMATES
FULLY QUALIFIED & INSURED
PERSONAL SERVICE AT COMPETITIVE PRICES

TEL: 01582 665779
MOBILE: 07798 927272

7 STATION ROAD, DUNSTABLE, LU5 4HS

Buy Direct From Our Own Farm

Master Card

VISA

From Ivinghoe Turf

- Commercial & Domestic
- Small Orders Welcome
- Bark, Grass Seed & Fertiliser
- Laying Service
- Discount on Larger Orders
- Screened & Blended Topsoil
- All Year Availability
- Forklift Delivery Available



ROLAWN[®]
Approved Rolawn
Stockist

Family firm farming since 1949

ALL AREAS

Freephone :

0800 043 5061

www.ivinghoeturf.com

The Bungalow, Vicarage Farm, Ivinghoe, Leighton Buzzard

Established over 20 Years

Duncan Tomblin TREE SURGEON

Forestry Contractor • Tree Felling
Crown Reduction & Thinnings
Deadwooding • Hedge Cutting
Stump Grinding • Site Clearance
Private Agriculture Fencing Contractor
Chipper & Stump Grinding Hire
Digger Hire

FULL PUBLIC LIABILITY INSURANCE
FREE ESTIMATES

'The Best Choice For Your Tree'

TEL: (01525) 221946
MOBILE: (07802) 410728

12 Greenways, Eaton Bray, Beds

ARC Contract Services Ltd

- Painting & Decorating • Plastering
 - Wall & Floor Tiling • Door Hanging
 - Bathroom & Kitchen Installations
- 20 years experience

All work guaranteed and fully insured

Call Adrian : 01582 539179

Mobile : 07789730580



WESTROPE BROS.

LAWN MOWER SERVICES

ALL TYPES OF GARDEN MOWERS SERVICED

THE RYE, EATON BRAY

Tel: Eaton Bray 220587

Gas Boiler Servicing

Over 40 years experience

Have your boiler serviced by a **Gas Safe**
and **CORGI** registered engineer

Other services available:

Maintenance, repair and installation of all domestic gas appliances including LPG. Boiler installations, Landlord Safety Certificates and Power flushing.

Free Quotes, no call out fee, and free friendly advice on all of the above.

Edwards Gas & Heating Services

Eaton Bray



Tel 01525 220626

www.edwardsgasandheating.co.uk
stevethegas@orange.net



Vicky

The Dog Grooming Specialist
www.vickysdogcare.co.uk



With a reputation for offering an exceptional personal service



- Over 29 years of professional experience
- Trained at the London Academy of Professional Groomers to the highest City and Guilds standard
- Dorwest Veterinary Trained
- Member of the Pet Industry Federation
- Sympathetic and gentle handling of all dogs
- **FREE** Health check with every grooming session
- **No cages used! No cage dryers!**
- One to one personal attention.....loads of TLC

Where Dogs Come First!



Mobile: 07796 445416

Telephone: 01525 222775

Email: enquiries@vickysdogcare.co.uk



Committed to the highest standards of animal welfare and customer care

Desktop Publishing

Magazine, Book, Brochure, Leaflet, Presentation, Advert
Design & Layout

PC Support and Guidance

PC Repairs

Home & Office Network Guidance & Setup

Digitising

Scanning of Photos & Documents, Slides, Videos, Archiving
Photo Repairs

Data Integration & Manipulation

Sharing data between applications

Automation of applications i.e. Excel Macros
Databases, Templates, Record Maintenance

01525 229695 (Edlesborough)

Email: enquiries@morenassociates.co.uk

www.morenassociates.co.uk

Absolutely Plastered

DOMESTIC/COMMERCIAL,
CLEAN AND RELIABLE SERVICE,
FREE ESTIMATES, FRIENDLY ADVICE



- * Plastering & Coving
- * Floor Screeding
- * Pebbledashing & Rendering
- * Dry Lining
- * Cornices & Mouldings
- * Insurance Work Undertaken

CALL NICK CONWAY ON

Mobile: 07751 830716

Tel: 01296 688981

6 Cotes Way, Wing, LU7 0RB



HCPC Registered

Practice in Luton

Surgery open 6 days

www.johnstonsltd.co.uk

Ms Johnston

PODIATRIST - CHIROPODIST

For home visits phone

07981 749038

Stuart Ball
Ceramic Tiler
Specialist
at all aspects of
Wall & Floor Tiling
Over 33 yrs Experience
01525 229381



Stephen D. Janes

(Established in 1982)

**CARPENTRY, JOINERY
KITCHENS FITTED
PROPERTY MAINTENANCE
TELEPHONE: 01525 220649**

G & J Groundwork & Landscapes

Driveways & patios
Free estimates

07949 118011
01582 477568

Garry Tearle



Neil Hodson Associates

*BUILDING DESIGN
STRUCTURAL ENGINEERING*

**PROFESSIONAL BUILDING DESIGN,
ADVISORY AND DRAWING SERVICES**

From plans for domestic extensions
to multi-storey offices, commercial
buildings and factories.

Structural surveys, site surveying,
advice on building defects and
Feasibility Studies

Planning Applications and Building
Regulation Consents obtained.

**24 HIGH ST TRING
Tel 01442 890894 OR
Edlesborough 222462**

J Able bathrooms

DESIGN

Free CAD design of your bathroom. This will give you a photo realistic finished plan of your design.

SUPPLY

Come and browse our display suites. This will help you decide on the perfect bathroom for your needs.

INSTALLATION

Our installations are of the highest standards!
We take pride in making you delighted with the finished result.

We have suites in a wide range of styles to suite your budget.
Ring to make an evening appointment at the showroom
or a home visit at your convenience.

T: 01525 220043 M: 07891 449077

3 Summerleys, Edlesborough, Buckinghamshire, LU6 2HR
W: www.jablebathrooms.co.uk E: ableplumbing@hotmail.co.uk



EDLESBOROUGH TENNIS CLUB

Website by Jupiterwill

www.etctennis.org

Play tennis Have fun Socialise Feel good Join our club

Join via the website, or call Iona McLean-Hall on 01525 220562 for details

AGE *Concern*

Wednesday Club Age Concern ...

would like to say a big thank you to everyone who attended the annual quiz on 10th March. A record sum of nearly £600 was raised for the funds. Gordon Gray with his impression of Bamber Gascoigne baffled a few punters, but a great evening was had by all. Also praise for the ladies in the kitchen who produced an amazing meal.

Norfolk Chalet Hire



A fully equipped 2 bedroom Chalet sleeps 4 people

Situated in the country town of Stalham, right on the Broads and only 3 miles from the seaside resort of Sea Palling.

Ideal for fishing, boating, walking or just relaxing on the beach

Most dates still available

For more Information ring 01525 220534

The Salvation Army, Both Place, Eaton Bray Weekly Activities



Sunday

Footprints (Sunday School)	9.45-10.45am
Morning Worship	11am
Messy Church	3-5pm
<i>(Last Sunday of the month)</i>	
Songs of Praise	4pm
<i>(3rd Sunday of the month from May to Dec)</i>	

Tuesday

Coffee Morning	
<i>(Alternate weeks)</i>	
	10-11.30am
Music practices (all welcome)	7.30-9pm

Wednesday

Home League	2.30-3.30pm
<i>(Ladies Mtg but all welcome)</i>	
Champions Challenge Club <i>(term time)</i>	
<i>(Ages 5-10 years)</i>	5.45-6.45pm

Thursday

Parent and Toddler Group	
<i>(Term time)</i>	
	9.30-11.30am
Girls' Night Out	
<i>(1st Thursday of month)</i>	
	7.45pm
Sewing & Craft Bees	
<i>(2nd Thursday of month)</i>	
	7.45 pm
Ladies Fellowship	
<i>(Last week of month)</i>	
	7.45pm

*For further details please call Envoy Hilary Chadwick. T:01525 222087 / 07932 057490
E: hilary.chadwick@salvationarmy.org.uk
W: www.salvationarmy.org.uk/eaton-bray*

ILLUSTRIA

Kennels & Kathotel

Offering your pet a fully licensed Dog and Cat boarding service.

Purpose built Dog kennels

Individual Cat chalets with outdoor exercise runs

All in pleasant country surroundings

01582 ~ 665343



ILLUSTRIA
Springfield Road
Wellhead
NR Dunstable Beds
LU6 2JT



Proprietors

Mick, Denise and Michele Garrod



Live a healthy & active life

Free 10 minute advice chats with our Chartered Physiotherapists & HCPC Registered Podiatrists

PHYSIOTHERAPY
PODIATRY &
CHIROPODY
PILATES
ACUPUNCTURE
SPORTS INJURIES
MASSAGE
WOMEN'S HEALTH
& PREGNANCY
CARE

St. Judes

physiotherapy, health and well being

01525

377751

enquiries@stjudesclinic.com
www.stjudesclinic.com

N.D.S.

General Building & Plumbing
(25 years experience)

- Roofing; Installer of UPVC guttering, soffits & fascia boards
- Kitchens & Bathrooms fitted
- Property Maintenance
- Fencing • Patios & Block Paving
- Gazebos • Garden Structures

Tel: 01525 221470

Mobile: 07946 626564

FREE ESTIMATES

...

**ALL WORK CONSIDERED
NO JOB TOO SMALL**

For a top quality
decorating job call

Marc Flack

01525 223166

Trading locally for 10 years
References are available



TIME TO MOVE?

**Don't be alarmed,
we're here to help!**

Established in 1999

e: info@plummproperty.co.uk

Five Good Reasons to use **Plumm Property**

Priate Offices - direct savings to you on fees

Local Knowledge - from our highly experienced team

Unrestrictive contracts - no lengthy tie-in periods

Marketing to outside area - attracting London buyers

Managing all your needs with a 1st class professional service

From Offer through to Completion of Sale



01296 660230

www.plummproperty.co.uk



Transport St Mary's Village 1st July 2017 Carnival 2017

Carnival Procession

This year the FAMILY category will be maintained in the carnival procession. Once again, decorate your car, van and/or trailer, classic car, go-kart, scooter, skate board or for that matter your tandem. This opens up the carnival procession to anyone who wants to “have a go and get involved”. Good luck!

Information for local businesses

Once again this is an appeal to local businesses as well as schools, youth groups, and organisations to be involved in the Carnival and have your organisation promoted during this event. The ever increasing foot print of the Carnival, with visitors from Aylesbury, Milton Keynes, Dunstable, Luton and Hemel Hempstead, is an ideal vehicle for promoting your business. As an organising committee we will work with you to find the best means of advertising your businesses to the crowds who attend the Carnival. Here are a few ways that the Carnival could work for you:

- Advertising in the Carnival Programme – delivered to all the households in Dagnall, Eaton Bray, Edlesborough and Northall.
- Advertising in the arena.
- Have a float in the Carnival procession.
- Have a stall at the Carnival.
- Donating a prize for the Grand Draw.
- Donating a prize for the Silent Auction.

All details of Carnival 2017 including how to book a stall, arrange advertising, offer prizes and much more can be found on the Carnival website:

www.stmarysvillagecarnival.com

Our Carnival!

Carnivals used to be common events around the country with thousands of villagers or towns-folk following and welcoming a procession of floats to a patch of local land and then indulging in all the rides, antics and foods that only a carnival and a variety of local nutters can offer. Sadly, their number is in rapid decline, many due to reduction in council funding. Our Carnival is NOT threatened by lack of Council funding; there is no Council funding! Our Carnival's success depends on a huge number of local volunteers. The Carnival Committee is always looking for people who can help in a variety of ways:

- Manning stalls
- Helping in the tea tent
- Driving a vehicle
- Acting as a marshal for the procession
- Supervising the car parking
- Picking up litter
- Baking cakes
- Tossing a sausage at the BBQ

There are other ways of supporting the Carnival by donating equipment, money or prizes for our Grand Draw, Silent Auction and Tombola. For those with green fingers perhaps you could take a few cuttings and donate to the successful plant stall.

As vital as these activities, is help with bringing equipment to and from the Green before and after the event. It's never too late to offer your help for this year. Whether you can spare an hour or all day there will be something for you to do and I can assure it's as much of a

hoot spending an hour or two at a stall or meeting new people setting up the carnival as it is attending the event itself!

For any specific questions or if you would like to get involved with organisation of the Carnival either by helping for a few hours on the day or providing assistance in the months before July contact Gordon Gray on 01525 220136 or through the Carnival website.

Magic Dave for Macmillan

with the Leighton Buzzard Children's Theatre

Local favourite Magic Dave, the award winning children's entertainer, will be returning to provide an afternoon of magic and music ably supported by the talented Leighton Buzzard Children's Theatre. This performance is in aid of Macmillan Cancer Support. The show starts at 2.30 p.m. on 20th May. Tickets: £6 adult £3 child £15 family (2+2). Booking via the Leighton Buzzard Library Theatre Box Office or website

All proceeds will go to support the work of the charity.



**WE ARE
MACMILLAN.
CANCER SUPPORT**

An Evening of Easy Listening Music

featuring the duo Aspect and Woburn Jazz

These two versatile local acts have come together in aid of Macmillan Cancer Support. This promises to be a fabulous evening with the vocal and instrumental talents of Michelle Bull and Dave Kirkpatrick who cover a wide range of material, coupled with the versatility of Woburn Jazz who play a variety of Big Band, Jazz, Swing, Blues and Funk. The show on 20th May starts at 7.30 pm.

All proceeds to Macmillan Cancer Support.

Tickets £9 Concessions £8.

Booking via the Leighton Buzzard Library Theatre Box Office or website.

**WE ARE
MACMILLAN.
CANCER SUPPORT**



THE FILLING STATION

A relaxed, informal way of expressing the Christian faith. Using mid-week monthly meetings the Filling Station has a particular focus on rural communities and we find that the local church is strengthened and helped in many ways. We provide refreshments, authentic worship from guest worship leaders, keynote speakers and a relaxed social atmosphere. Everyone is welcome. Do come and bring your friends.

4th Tuesday of each month at 7.30 p.m.

Bellows Mill, Eaton Bray, Dunstable, Beds. LU6 1QZ

Speakers:

25th April: Ian McCormack, who was stung by lethal jelly fish and woke up in a hospital morgue. An atheist, his experiences at this time led him to become a Christian

Local contact: Diane 07815 895501

To find out more visit www.thefillingstation.org.uk



**THE
FILLING
STATION**

Come for Coffee at St Mary's

For a warm welcome and
a cheering cuppa
each month in
St Mary's Church
Eaton Bray
10.30am - midday

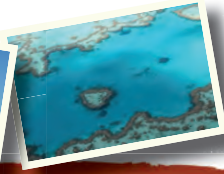
Next Coffee Mornings:
Saturday 1st April
Saturday 6th May



Looking to visit Australia...

For help with creating the best itinerary for you please call or email us

- Experienced Aussie Specialist Agent
- Friendly, honest advice from an independent travel agency
- Specialists in tailor-making holidays to destinations worldwide
- Extensive experience to arrange every detail
- Using fully bonded tour operators
- No booking fees



Travel Impressions

01442 890265

enquiries@travelimpressions.co.uk
www.travelimpressions.co.uk

Suite 4, George House, 64 High Street, Tring, Herts. HP23 4AF

**ADRIENNE'S
PRIVATE HIRE**

Call for a **FREE** quotation
Book early to avoid disappointment
Very competitive prices

Airport Transfers
& Private Hire
07980 039715

*Our executive Cars, 6 seater Minibuses and
lady driver are all available*

CHARLES HILL

GARDEN SERVICES LTD

DESIGN | BUILD | MAINTAIN

LANDSCAPE CONTRACTORS

NCH Horticulture

City & Guilds Garden Design

A professional company working
with all your garden requirements
from design to complete landscape.

01525 242065

07773723236

www.charleshillgardenservices.co.uk
www.allyearroundbbq.co.uk

GRASS ROOTS GARDEN MAINTENANCE

TREE SURGERY, HEDGE PRUNING,
SELECTION SUPPLY AND PLANTING OF
TREES, SHRUBS AND HEDGES.
REGULAR MAINTENANCE/ONE-OFF JOBS
(Fully Insured)

Brian McMahon NCH (Arb)

01525 221960



EDaN BEAUTIFICATION TEAM



SELLERS: from 8.30 am
£10 PER CAR

Access from Pebblemoor
LU6 2HZ – under barrier
2 met. height restriction
No trucks or large vans!

NO NEED TO BOOK

Queries? Tel/email Chris:
01525 220739/07474446396
chris@brooklyns.org.uk

PLEASE CONTACT IF BAD WEATHER !



BUYERS: 9.00 am -12.00

**FREE CAR PARKING ON THE
GREEN FROM PEBBLEMOOR**

We'll be serving up delicious
refreshments from the BBQ

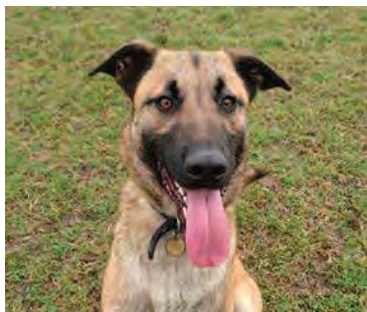
... Great bacon butties, hot
dogs, muffins & pastries, also
hot & cold drinks etc...

**Don't miss the bargains on
the green this bank holiday!**

MONDAY : 1st MAY EDLESBOROUGH VILLAGE GREEN



Appledown Rescue and Rehoming Kennels



FUN DOG SHOW!

Sunday 14th May

Come along to
Appledown for a great
family day out!

12 classes plus Best in Show

Tea tent, Barbecue & Stalls!

Show opens at 11 a.m. Classes commence 12 noon.

Judge: Lynne Davies. Entries on the day.

Appledown Rescue & Rehoming Kennels, Harling Road,
Eaton Bray, Beds LU6 1QY. 01525 220383 (Registered Charity Number 1116848)



QUORUM

**Saturday 8th April, 7.30pm
St Mary's, Eaton Bray**

**The Milton Keynes based choir, perform
a concert of sacred music following the
church calendar through Holy Week**

**Tickets priced £7.50 (children free) from the Box
Office on 01525 222283**



St Mary's Eaton Bray

Spring Sale

Saturday 29 April 2017

12 noon - 3pm

Eaton Bray Village Hall

Church Lane, Eaton Bray, LU6 2DJ

Book a table for just £10 - crafts or bric-a-brac.

Cakes, books, raffle and delicious lunchtime refreshments available,
including our legendary bacon butties!



FREE ADMISSION



Contact Barbara Morton on 01525 852368 or email
at barbara.morton1@gmail.com for more information

**The
Salvation Army
Eaton Bray**

CELEBRATING
130
YEARS
1887 - 2017

1887 - 2017

**Celebrations led by
Commissioner William Cochrane**

Sunday 23 April

Service of Celebration

4pm

Eaton Bray Methodist Church



For more information please contact
Envoy Hilary Chadwick on:

Tel: 07932057490; 01525 222087

Email: hilary.chadwick@salvationarmy.org.uk

The Salvation Army is a charity & Church. Registered Charity No. 214779
and in Scotland SC009359

Churches Together would like to invite you to
an evening with International Singer/Comedian/Raconteur

Jonathan Veira

at St Mary's Church Eaton Bray
on Saturday 20th May 2017 at 7.30pm

The evening will include light refreshments
and a retiring collection for Christian Aid

Please contact Chriss Hewitt on 01525 222288 or 07983153214
for tickets, priced at £10.00 each.

For further details, see posters which will be displayed around the
villages in April.

Catch a glimpse of JV at www.jonathanveira.com
or <http://www.youtube.com/watch>



**OPEN GARDENS
FESTIVAL
23 July 2017
Wanted - Gardens**

In Eaton Bray, Edlesborough or Northall
Would you be willing to open your garden for the day to
help raise money for charity?
If so, or you would like more information, please contact
Kay Griffiths on 222849 or Gordon Gray on 220136.

“Great British Spring Clean” Litter Pick Saturday 4th March 2017

Well someone “up there” was looking down and approving as the intrepid litter pickers met on Edlesborough Green by the sign on the first really sunny morning for over a week. We had a beautiful morning for it, and as you can see from the picture, there were quite a few of us, all brandishing our pickers and rubber gloves and ready to go. Actually, there were a few more who turned up later and didn’t make the group photo, and a couple of helpful dogs... – and one amazing lady who caught us as we finished and asked for a bag and gloves so that she could take part while walking her dog – and the pushchair - round the Green!



(Some of us had made a start in Northall the previous Wednesday afternoon but the angels were not with us this time, and we had hardly started when the heavens opened! We carried on regardless and managed to collect eight bags of assorted rubbish from Eaton Bray Road and got soaked in the process – but as I write this to meet the 10th deadline, it needs doing again already!)

So we were delighted with the lovely weather on Saturday morning, and there were enough of us to split our resources and tackle different areas of the Village. Some of us went down Cow Lane and continued into the local footpaths (good for the dogs...). Some of us went down to the Travellers Rest and tackled the layby and the verges around the roundabout – always a mine of litter!

Some of us did the Green and continued up Cock’s Close towards the Main Road, and Sharon Stilliard was still picking up litter on the Main Road at 3pm (!) long after the rest of us had gone home. And there may have been other people still busy then, as there was a late call from our indefatigable Parish Council Chairman, Alan Williams, who had found time to join us – go off to a meeting and then resume his litter picking. At the last count (and it may increase!) we had twenty-five bags at my gate, another six at Chris Yates, various others spread about, and I also reported the two car wheels on the layby verge and the door along Cock’s Close. There was a fair haul of discarded clothing in the footpath from Cow Lane, including a heap of wet socks – the mind boggles at what they are getting up to down there!

A big “Thank You!” to everyone who turned out and left the Village a tidier place. It was great to meet with such enthusiasm – several people enjoyed themselves so much that they wanted to keep going, and have agreed to be part of my contact list when I try to organise a litter pick. If you helped on Saturday – or even if you didn’t but fancy helping now and then, please contact me on lornacubbage@btinternet.com and I’ll add you to our list so that I can let you know when we plan to be out and about.

What else can we do to keep our Villages clean and tidy? Look after your own patch at the front of your property. Encourage the younger members of the Community to take their sweet papers, cans and drinks bottles home to recycle and the “older” members to keep their fast food packaging and coffee cups in their cars. And spread the word that dropping litter is definitely not cool!!

✍️ Lorna Cubbage.





EATON BRAY PARISH COUNCIL



IN MEMORANDUM

Councillor Richard Windmill

He devoted his time to serving the community



The Parish Council is very saddened by the death of Councillor Richard Windmill.

Richard joined Eaton Bray Parish Council in April 1996 and worked tirelessly for the Council during all these years. He was hugely liked and respected by all his colleagues on the Council and the residents for whom he was dedicated to serving.

Our thoughts and condolences are with his family and friends.

He will be greatly missed.

Are your training shoes fit for sport?



How many of us confess to having an old pair of comfy trainers that we use tirelessly?

Old footwear can cause or worsen underlying problems in load-bearing tendons. There is no exact

guidelines on how frequently training shoes should be replaced but most people keep using their running, training or walking shoes far longer than they should.

Trainers, like all sports equipment, will wear out and the shock absorbing qualities will degrade with age and mileage (or impact if you are not a runner and go to the gym). The general rule of thumb is that trainers should be replaced every 450-550 miles (roughly every 6-12 months depending on your weekly mileage). This will still apply even if you don't run and just use your shoes for high impact exercise classes or just walking. In this instance, though the life expectancy of your trainers may extend to 18-24 months, look for signs of obvious wear in your trainers. Does the cushioning in the sole still feel springy? Can you fold the trainer easily without resistance (do this gently).

Does the sole of your trainer have grips still in good condition or have areas worn flat or smooth? This can also give you some vital clues as to your foot posture during impact activities, and whether your trainers are actually suitable for your foot.

If you experience any pain while exercising, get assessed by a Chartered Physiotherapist. They can identify any underlying contributory causes such as poor movement or control at the hip, knee or foot.

A physiotherapist may also refer you to a specialist Podiatrist for a more in depth analysis of your foot posture and whether orthotics might be helpful for the long-term. Once these areas are addressed, you'll be able to return to your chosen sport and be less likely to suffer from the same pain again in the future.

St Judes Clinic

26 Lake Street

Leighton Buzzard

LU7 1RX

☎ 01525 377751

🌐 www.stjudesclinic.com

📧 enquiries@stjudesclinic.com



LOCAL HERALDRY

BY JOHN HOCKEY



Whipsnade Church North

In this series, we take a look around local villages to find interesting and unusual heraldry.

THE ROYAL ARMS

If you take a trip to Whipsnade you will find there is more than the zoo to interest you.

The lovely little brick built church dedicated to St. Mary Magdalene sits quietly near the Green in the centre of the village. The nave is attributed to Nicholas Hawksmoor (1719) and the agreeable apse was added in 1860.

On the interior north wall are the Royal Arms, originally of James I (c.1625). These have been overpainted with the arms of Queen Anne and the arms now seen are George I (1714 – 1727). Several things are interesting on these arms.



Royal Arms Whipsnade

its well-known motto '*Honi soit qui mal y pense*' – 'Shame on him who thinks evil of it'. The Order of the Garter came into being after Edward III picked up the garter of the Countess of Salisbury at a ball and placed it upon his own leg, to the amusement of the assembled company. Thereafter, in 1348, King Edward III instigated the Most Noble Order of the Garter, consisting of the sovereign, the sovereign's eldest son and 24 knights.

There is one other interesting feature of these arms in Whipsnade church - the very obviously male character of the supporters is known heraldically as 'pizzled'!

On the top right quarter of the shield it still shows three *fleur de lis*, a reminder of the fact that historically England had a claim to the French throne. Following the Act of Union in 1800, George III abandoned the *fleur de lis* and they were last seen on British shields in 1801.

The bottom right quarter shows the arms held by the Elector of Hanover, here held by George I (who was born in Hanover), by inheritance. When Queen Victoria ascended the throne in 1837, the Hanover arms were removed from the royal arms as under Slavic law women were not allowed to take the Hanoverian throne.

The whole arms are surrounded by the Garter, with



Whipsnade Church Royal Arms

Next month: A Flamstead hatchment.



PROTECT YOUR HOME, BUSINESS AND BELONGINGS.



MJ Security is a local family-owned business with over 30 years experience offering the latest technologies in home and business security at competitive prices.

Specialist in:

- Intruder Alarms
- CCTV
- Access Control
- Maintenance
- And more ...



Call us today on **01582 665022** for a FREE survey.
Visit our website **www.mjsecurity.co.uk**

Don't wait until it's too late ...
MJ Security - for prevention, protection and peace of mind.



Some comments from our December 2015 Ofsted report:

Children learn good manners and know how to treat each other with respect.

Staff are consistently kind and caring and this supports children to develop confidence and resilience.

Teaching is consistently good and children's safety is given the highest priority.

We are a committee run playgroup operating five mornings a week 9:15 – 12:15 for children aged 2 to school age.

If you would like to find out if your child would be happy here, please phone our Playgroup Leader, Ann Tobin on 07816 358 342.
www.dagnallunderfives.co.uk



EATON BRAY PARISH COUNCIL



March already and you will be reading this in April, time goes so fast!

The Neighbourhood Steering Group have had another busy month, a large number of us from the village, including steering group members visited the Eaton Park exhibition by Willis Dawson. This exhibition caused quite a lot of concern and activity. The Parish Council meeting was attended by three times the usual number of public visitors and five more joined the February steering group meeting.

There is nothing like a proposed new large development to push us into action. I received a number of messages about this development most of which expressed concern over the amount of traffic that would use Eaton Park and the effect that 70 new homes would have on our village i.e. drainage, sewage, flooding, school, parking, cars and traffic.

During our meeting we discussed where new dwellings could be sited, this is a particularly difficult question as most positions affect someone or an important part of our village, we all would prefer not to lose the things we enjoy about our environment. Nevertheless new homes are inevitable.

The good news is that we have collected lots of information about Eaton Bray's biodiversity, heritage, historic and listed buildings so we are getting a better idea of what to avoid. We also carried out a short traffic survey which indicated that more traffic travels South at peak times rather than North. We plan to carry out another survey when the new M1 / A5 link is open.

Finally, we are now getting to the stage where we will hold a community consultation so that we can get **your views** on how the Neighbourhood Plan is shaping up. It is vital that residents, businesses and community groups make their views known to us including direction of growth of the village, sites that should be developed, parking and traffic issues, wildlife and biodiversity.

Keep your eyes on the Parish Council web site and Facebook page for more information.

If you feel you can offer any support please come along to our meetings. However support doesn't need to be attending monthly meetings, perhaps you have the time to help with data collection/research.

Contact the Parish Clerk at www.ebpc.co.uk - **please feel free to attend the next Steering Group meeting.**

Meetings are planned for the last Monday of the month at 19.30hrs at the Coffee Tavern, Eaton Bray.



Heidi Head, Parish Clerk & RFO

Email: clerk@ebpc.co.uk - Telephone/Fax: 01525 221464 - Website: www.ebpc.co.uk
Office Hours: Tuesday/Thursday/Friday 09:30-13:30hrs [messages can be left on answerphone]

Follow Eaton Bray Parish Council on Facebook and Twitter

Keep up to date with what is going on in the parish

Make your house a home with
blinds and awnings from

**VANSAR
BLINDS** 

www.vansarblinds.co.uk

Find us on Facebook



- Free No Obligation Measuring And Quotations
- All Blinds Made To Measure
- Choose In The Comfort Of Your Own Home Or Workplace
- Family Run Business
- Large Range Of Quality, Affordable Fabrics And Colours To Choose From

01525 220477 or 01582 699565 sales@vansarblinds.co.uk



David Brown Window Cleaning

Quality Reliable Service.

Regular, Occasional or
Single Visits.

Friendly Free Estimates.

Facias, Guttering & Conservatories.
External Cleaning & Maintenance.

Fully Insured.

Phone 01582 472113
Mobile 07534 837073

McTimoney CHIROPRACTIC



Margie Craib BSc BHSI DC AMC MMCA
Human and Animal Treatments

Ashridge Farm, Ringshall, Berkhamsted, Herts HP4 1ND
Telephone: (01442) 842729

General Chiropractic Council Registration No. 293

Spinney Landscapes & Gardening Services

All Aspects of Grounds Maintenance

Weed Control • Driveways & Patios

Lawn Care & Scarifying • Fencing

Turfing • Tree Work

Snow Cleaning & Gritting

Tel: 01525 839622 Mob: 07876 500292

Email: spinneylandscapes@gmail.com

www.spinneylandscapes.com



Dagnall Church of England School

Courage
Friendship
Respect

Love Values
Koinonia
Responsibility

Dagnall School is a friendly, nurturing and fully-inclusive learning community, situated at the foot of the Chiltern Hills. We offer a unique, family feel where children benefit from small class sizes and personalised learning delivered by highly-skilled teachers.

We provide a secure and creative environment where children feel safe to take risks, to challenge themselves and to develop their love of learning as individuals.



Curiosity Creativity Community

Spaces available, to arrange a viewing please call Dagnall school:

01442 842473

or visit: www.dagnall.bucks.sch.uk

email: office@dagnall.bucks.sch.uk





GENERALMECHANICALSERVICESLTD
 VEHICLE SERVICING AND REPAIRS



**MOTs • MOT REPAIRS • SERVICING
 DIAGNOSTICS • TRACKING • AIR CONDITIONING
 TYRES • CAMBELTS • COLLECTION & DELIVERY
 WELDING & FABRICATION • BATTERIES**

All vehicles - all mechanical work!

1 HONEYWICK LANE, EATON BRAY, LU6 2BJ
 reception@general-mechanical-services.co.uk
 www.general-mechanical-services.co.uk



01525 222876



Centre of mind for motorists



HEIRLOOM

Café · Edlesborough

An artisan coffee shop showcasing exceptional coffees from our own coffee roastery. A seasonal menu of breakfasts, brunches, lunches & early dinners.

www.heirloom.cafe · info@heirloom.cafe

M . P . S

Maintenance & Property Services

- KITCHENS AND BATHROOMS
- PAINTING AND DECORATING
- PROPERTY RENOVATIONS
- PLASTERBOARDING
- FENCING

FREE ESTIMATES
 NO CALL OUT CHARGE
 NO JOB TO SMALL
 LOCAL

Contact:- Julian

07958 306301

E-mail – mps@mustoe.co.uk
www.mustoe.co.uk

Leighton Aerials

Established 1970

For all your aerial and satellite needs call Colin on

01525 374742



Edlesborough School & Pre-School



Pupils' behaviour is outstanding...

The environment for learning is exciting and stimulating...

A real strength of the school is pupils' attitude to their learning .

Ofsted 2013

For more information about our School, Pre-School and Before and After School facilities, visit our website at www.edlesborough.bucks.sch.uk

Please contact the school on 01525 220431 to arrange a visit.

S M Reilly & Son Ltd

General Builders & Contractors



Turning Your House into
a Home Since 1987

All aspects of the building trade undertaken

- *Extensions*Hard Landscaping*
- *Windows, Doors & Conservatories*
- *Fitting of Aluminium Bi-fold Doors*
- *Kitchen & Bathrooms*Drives*
- *Loft Conversions*

01525 221740 07970 637511



JAMES FALCON-CROSS

LANDSCAPING AND OUTDOOR LIVING DESIGN

ALL ASPECTS OF LANDSCAPING
UNDERTAKEN INCLUDING
FENCING, TURFING AND PATIOS
TIMBER STRUCTURES
DESIGNED AND BUILT

VEGETABLE AND HERB GARDENS

01442 843258 / 07769 901325

ONECROSSFALCON@GMAIL.COM

eww

E W Wallace & Co
Chartered Accountants
Tax Consultants
Business Advisors

Small business specialists serving
Beds, Bucks & Herts

- Annual accounts
- Tax returns
- Self-employed
- Limited companies
- Small business specialist
- Sage Accounts expertise
- Prompt, personal service
- Value-for-money fees
- Free initial consultation

01525 220826

www.ewwallace.co.uk



Parties Wedding Receptions Stage Productions

Fitness Classes Business Meetings Beer Festivals

Film Shows Club Meetings Keep Fit Quiz Nights

Eaton Bray Village Hall

Capacity for 220 People Parking for 70 Cars Meeting Room Countryside Views

Bar Facilities Kitchen Facilities Full AV Facilities Baby Changing Wheelchair Access



For bookings or enquiries call: 07975 797 202

email: bookings@ebvh.co.uk

www.ebvh.co.uk



WAGGING

wonderful dog grooming

Here to take care of your mucky pup!

Your local dog grooming service in Eaton Bray

1-2-1 care for your dog

NO cages!

07580 343396

www.waggingwonderful.co.uk

info@waggingwonderful.co.uk

James B Chadburn FBHI

Fine Antique clocks & Barometers

Specialist in repairs & restorations.

Valuations & clock finding service.

Advice & assistance on formation & disposal of private clock collections.

Quality clocks/barometers Bought & sold.



Telephone 01525 221165

Mobile 07790 000629

E-mail: info@jameschadburn.com

NG AUTOS



MAKING YOU AND YOUR CAR HAPPY

CAM BELTS • MOT'S • MOT REPAIRS • HEAD GASKETS
AIR CONDITIONING • RECOVERY/BREAKDOWN
DIAGNOSTICS SERVICING • BRAKES • SUSPENSION
CLUTCHES • GEARBOXES • TYRES • WHEEL BALANCING
WHEEL ALIGNMENT COLLECTION & DELIVERY

CALL NICK OR GARY

01525 220850 OR 07972 198615

**SPARROW HALL FARM, LEIGHTON ROAD,
EDLESBOROUGH LU6 2ES**



Reception



Service Bays



MOT Station

**CHIROPODY HOME VISITING
PRACTICE**

Julia Reading, BSc(Hons)

17 years experience

- * Corns * Hard skin * Verrucae
- * Thickened/Ingrowing nails
- * Nail cutting * Diabetic feet

Please telephone: 0774 647 2781
for more information or to make

an appointment

The COLLEGE
of PODIATRY

hpcp
registered
www.hpcp-uk.org



**The
Gentleman
Gardener**

Let your local RHS qualified
gardener make your garden
beautiful, from simple
garden maintenance to total
redesign of your garden.

Please call Barry on
**01525-222451 or
07541196384**

to pop round for a free chat.

CHIMNEY SWEEP

Local & Est. Brush n Vac
Friendly, Clean and Efficient

Call **KEVIN HING** on

Tel: 01525 371592

Mob: 07940 528897

www.khing.co.uk

Member of NACS

**D.A. Windows Doors
& Conservatories**

23 Church Lane, Eaton Bray, LU6 2DJ

Tel: 01525 221051 Mobile: 07807 798387

email: mimcavinder@hotmail.com

**AUTHORISED SWISH INSTALLER
WITH OVER 20 YEARS EXPERIENCE**

Installation of PVCu windows, doors and conservatories
Replacement glass units and window maintenance

**QUALITY PRODUCTS - QUALITY WORKMANSHIP -
REASONABLE PRICES**

Government
Approved
CERTASS
Contractor

General building
maintenance work also
undertaken including:
Fascias and Soffits Gutters
Fencing

Accredited Member
of the Incorporation
of Plastic Window
Fabricators and Installers
Limited



Gluten-Free Brownies

Some of the most popular recipes on my Weekend Kitchen

programme are those which are gluten-free. Making great food - cakes and bakes in particular - without the need for gluten needn't be difficult. Take these wonderful brownies for example. They are muddy, fudgy, soft and moreish. Cakes made with gluten-free flour can be a little dry but in such a 'wet' mix as this, the finished brownies are as moist as can be. The recipe comes from a real baking expert, and a lovely regular on my show. Paul Barker runs the Cinnamon Square Bakery in Rickmansworth, and he shares this recipe and others in his baking bible, 'Cinnamon Square - A Measured Approach'.

210g unsalted butter
210g dark Belgian chocolate
285g caster sugar
170g beaten egg at room temperature (that should be about 4 eggs)
125g gluten-free plain flour
Place the butter and chocolate in a plastic bowl and gently melt them in the microwave or over a hot water bath. You want the mix to get quite warm. This will help keep the batter fluid when adding the eggs.

In a separate bowl combine the sugar and eggs together, and then pour (whilst stirring) into the butter/chocolate mixture. Finally, add the gluten-free flour and stir until thoroughly combined.

Pour the mixture into a 23cm square baking pan, lined with greaseproof baking paper.

If the batter is still warm, it will make its own level. However, if the batter has thickened, you will need to spread it level

across the baking pan.

Place the pan into your oven and bake at 170°C / Gas Mark 4 for 25-30 minutes. It is better to slightly under bake these brownies as they will continue to cook once out of the oven. You actually want the centre to still be slightly soft when baked.

Once the brownies have cooled, you can dust with a little icing sugar, top with some store-bought chocolate fudge, or a simple chocolate ganache (made by melting together equal weight of dark chocolate and cream). This recipe makes nine large square brownies or 18 smaller rectangles.

Hear wonderful recipes on Nick Coffey's Weekend Kitchen every Sunday morning on BBC Three Counties radio at 11am. You can also join Nick every weekday afternoon at midday for brilliant local guests with great stories to tell and all the music you want for your early afternoon.



95.5 FM | 103.8 FM | 104.5 FM | DAB | bbc.co.uk/threecounties



Dunstable & District Local History Society

Tuesday 11 April, 7.45pm
Women of the SOE's F Section

The Special Operations Executive, sending agents into German-held territories during the Second World War, used RAF Tempsford in Bedfordshire as one of its bases. Odette Hallowes and Violette Szabo were among the brave women whose stories are told by Bryony Norburn

Methodist Church Hall, Dunstable
Visitors always welcome £2



Eaton Bray Lawn Tennis Club

So, my first article where I have the faintest idea what has been going on at the club. Last month's, if you recall, was written from chilly Montreal whilst an excited border collie was trying to drag me by the shin across the floor to her lead for yet another walk through six foot snow drifts. She's a strong dog as I take a lot of dragging. But upon my return, and subsequent permanent promotion to 'Focus Article Typist' (FAT for short...) I've been besieged by more information than a human brain (well mine anyway) can be reasonably expected to process, and certainly more than would fit in the average village magazine. So here goes with the assailant points, necessarily and appropriately abbreviated, and we'll see how much you've taken in at the end, or indeed if you're still awake.

Our clubhouse caught fire in January. The extractor fan burnt out and fell off the ceiling onto the toilet seat. There were no casualties other than the wounded pride of the person who left the fan on! Smoke deposits, soot and grime everywhere. Fire service checked it out, insurance assessor visited, decision made to completely re-furbish décor and electrics using some club funds as well. De-greased, cleaned and re-decorated. Result – four weeks after the fire we have a bright, gleaming clubhouse. Thanks go to Ross Bagni, Peter Hale, Stephen Macintosh and Glenn Wigley for their speedy actions in getting us back to normality so quickly. And not a sooty ball in sight.

Committee changes! Helen Woodhead, after many years sterling service as membership secretary, has quite rightly unburdened herself. Thanks Helen, you'll be missed. Not many people ever left the tennis club when she was in charge (or did a 'Texit' as it is now known). A big welcome to Maggie Kerr who takes on the mantle. Nicola Griffiths also joins us as club secretary – thanks Nicola! Thus the average age of the committee is immediately halved. It is also on average five times better looking.

In addition the IQ is substantially increased. The aforementioned Peter, Stephen and Glenn manfully continue (albeit at a somewhat slower pace...) alongside club coach Sara Leavy and Debbie Williams, who somehow manages to organise our juniors into getting to the right places at the right times. I couldn't do that with two children, so how she does it with 50-odd is beyond me. Maybe she has a magic wand... or a set of pipes!

The Summer leagues. This year we're entering two Men's teams, one Mixed and six Juniors. Some great results for the Juniors in the current Winter league, let's hope the trend continues! With Sara in charge, there's no reason why it shouldn't. Our club tournament will get going in June, with the Final's day sometime in September. The date has probably been set but that wasn't in the missives I was given, so I'll have to let you know as I'm sure you won't want to miss that, or the sumptuous BBQ that accompanies the day's play. So you may want to keep every Saturday in September clear for now. I certainly will be, as it'll probably be me who'll be talked into doing the BBQ. I'm a glutton for punishment, but especially for sausages, burgers and onions.

So we're done. Never in the history of EBLTC Focus articles, has so much information gone into so little space in such short a time. Normal service will be resumed next month with the return of irrelevant drivel and unbelievable stories of School Lane dual carriageways, Wimbledon-style closing court roofs and 'Arry Redknapp becoming Chairman. Ah, those were the days. And 'thank you' to Peter Hale for being chief Focus scribe over the last couple of years, I couldn't have had my sabbatical without you! For any further information about the club, including when we get together for our social tennis sessions up at the School Lane courts, or our various activities, you can visit our website at www.ebltc.org.uk; Alternatively please call any committee member – names and numbers

on the website - Coach Sara Leavy on 07561 571578, or if they're all out and I'm not fighting off being dragged somewhere by a dog, then me, Andy Cross, on 07783 667338. If I do

answer the phone and sound breathless, please call the police. Most people do when I breathe heavily down the phone line. Dog or no dog!
✍️Andy J Cross

No Jam or Jerusalem at the 2017 Science Day

Buckinghamshire Federation of WIs organise a Science Day every year for WI members.

The Science Day this year was fascinating! The first speaker was Adam Kucharski, a Maths professor who lectures on Mathematical Modelling at the London School of Hygiene and Tropical Medicine. He talked about how social behaviour and immunity affect disease transmission, using the outbreak of Ebola in West Africa as an example.

The WI member who gave the vote of thanks to Adam wished that he could have been her Maths teacher when she was at school because he made Maths so interesting!

From Maths to Physics – Helen Arney used Music to entertain us. She is a Physics graduate, entertainer and song writer. She sang one of her own songs about the Sun feeling sorry for its self. It feels neglected now that so much research is being done on other galaxies, black holes and other suns which might have planets similar to Earth. She finished by singing Tom Lehrer's song about the Periodic Table, pointing out that 17 more elements have been discovered since the song was written.

After lunch, Denise Smythe-Wright's talk about oceanography led to many interesting questions about pollution and climate change.

The science of the ocean is diverse and such a complex environment requires the knowledge of many sciences.

The final talk was entitled 'Are your genes to blame when your jeans don't fit?' given by Giles Yeo, a researcher into genetics. He has presented 2 programmes for Horizon on BBC2 this year. He talked about changes in lifestyle and how attitudes to food have changed. 30-40 years ago, in this country, people had enough to eat. When you look at photographs from this time, most people were slim. Now we are surrounded by opportunities to buy food and nearly half the population is over-weight or obese. Weight increase occurs because we consume more calories than we use. This is a cumulative effect over several years.

100 different genes have been attributed to having effects on metabolism and obesity.

Giles's advice to lose weight is to eat less and move more.

✍️Sally Taylor

Member of Edlesborough WI

Eaton Bray Cricket Club 100 Club Winners

March 2017

£100	John Hill	No.103
£25	Ralph Timberlake	No. 28
£10	Burnie Tickell	No.125

Eaton Bray Cricket Club is kindly sponsored by Meadow Marquees, Houghton Insurance & Giblin Property.

FOR SALE

344 Block Paving 200 x 100 x 50mm Single – Brindle
Used but good condition
£25 ono

Waterfall for Ponds and water features

Double Step pond waterfall
The waterfall is manufactured out of resin then crafted to resemble real sandstone. 48cm wide x 94cm long New RRP £89.99
£20

Tel 07734 111654

St Mary's Newsletter



HOLY WEEK SERVICES - APRIL

9th Palm Sunday

10am Procession from Hall

10th St Mary's Kensworth NCG Eucharist, 8pm

11th St Giles' Totternhoe NCG Eucharist, 8pm

12th St Mary's, E Bray, NCG Eucharist, 10am

Quiet Afternoon, Ashridge Cottage 1 - 3.30pm

13th Maundy Thursday

8pm, Sung Eucharist and Vigil

14th Good Friday

March of Witness, St Mary's RC Church, Dunstable, 10.30am

11am – 1pm Messy Church, EB Hall

2pm, An hour at the Cross

16th Easter Day

8am & 10am Eucharist (9am at Dagnall)

Easter Egg Hunt after 10am service

DATES FOR YOUR DIARY

1 April Coffee Morning - 10.30am - 12

2 April APCM, after 10am service at St Mary's, followed by buffet lunch

South Beds Concert Band OXJAM concert, 3pm, St Mary's

4 April NCG Lent Course 7.30pm for 7.45, Studham Church

8 April Music@St Mary's Quorum Sacred Music, 7.30pm

9 April Selection of Carnival Queen 11.15am EB Village Hall

22 April Mens Breakfast Club - 8am, Northall Village Hall

26 April Licensing of Rev Joy Cousans, 7.30pm

29 April Spring Sale - 12 -3pm EB Village Hall

6 May Coffee Morning & Plant Sale -10.30am-12

14-20 May Christian Aid Week

16 May NCG AGM 7pm, Dunstable Golf Club

20 May Churches Together Concert Jonathan Veira, 7.30pm, St Mary's

25 - 28 May Global Wave of Prayer

NEWS FROM ST MARYS

Installation of Rev Joy Cousans-26 April

We are looking forward to the Licensing of our new Vicar by the Bishop of St Albans at 7.30pm

on 26th April. The service will be followed by a buffet supper in the hall - we hope to be able to squeeze in everyone who would like to attend! Joy comes to us with more than 20 years' experience in the priesthood in both town and rural parishes and in churches ranging from evangelical to Anglo-Catholic. We look forward to her ministry and her guidance. Please pray for her and her husband Dave, as they settle into the village. Pray also for the blossoming of our church as we take our next steps forward.

Pastoral Visiting Team

Members of the Pastoral Visiting Team are now much more aware of who is in need of pastoral support and how we can help them. Hospital visiting, home visiting and home Communion are all taking place. Please help the team by informing Catherine or Gordon about people in our church family, and beyond if appropriate, who are sick or otherwise in need of support.

We encourage all church members to play their part in visiting, making phone calls, sending cards and praying, as appropriate.

Foodbank

Since the last report in the December Newsletter, the situation has been held steady with regard to the number of people having to call upon the services of Dunstable Foodbank. However, in the 45 weeks to mid February the total number of people helped was 2934 (an increase of 8%) and the total number of vouchers redeemed has increased to 950 (up 12%).

We are very grateful to the shoppers at Tesco Skimpot for their generosity just before Christmas when just over 2 tonnes was collected. This is good news as we are starting to see the adverse effects of benefit changes coming through.

Please see the Pew Slip for the monthly urgent requirements, which will be published the Sunday before "Foodbank Sunday".

Our thanks go to all at St Mary's and All Saints,

Dagnall for their continued support. Iain Stubbs & The Foodbank Team

Coffers Corner

We have now entered a new year and it is only right that I should say 'Thank You' to all who have contributed financially to the church during 2016.

With your regular giving and with assistance from the Inland Revenue(!) St Mary's managed to end the year with a small surplus of income over expenditure. Full details will be available in the published accounts which will be available on 13 March.

David Mann, Treasurer.

NEWS FROM THE WIDER CHURCH

Christian Aid Week (14 - 20 May)

Can you be one of our hard-working team of door to door Christian Aid collectors? It need not be an arduous commitment; collecting from just a few houses really helps. You need not go out alone – perhaps collect with a friend and cover twice the ground more sociably! Or if collecting is not your thing, you can help in other ways; please contact Catherine Hayden 220527.

Global wave of prayer - 25th May - 4th June

Christian communities and families around the world will be joining together to pray that their friends, family and neighbours come to know Jesus Christ. Please encourage others to join this global wave of prayer. The aims are:

- For people to pray with God's world-wide family from 25 May - 4th June - individually, as a family or as part of a church
- For prayer events to be held across churches in the UK and the world. (Look out for St Mary's initiatives)
- For people to be transformed through prayer by the Holy Spirit, finding new confidence to be witnesses for Jesus Christ.

MUSIC & FUND-RAISING

Music @ St Mary's Concert, 8 April, 7.30pm

The Milton Keynes based choir, perform a concert of sacred music following the church calendar through Holy Week We do hope you

will all try to come to this concert in which Bob Stiliard will be performing. Tickets priced £7.50 (children free) from 01525 222283.

Spring Sale – 29 April 12- 3pm

Our Spring Sale will be held on Saturday 29 April at Eaton Bray Village Hall from 12 noon - 3pm. Now is the time to start sorting out all the 'stuff' you would like to sell and book a 6 foot table for only £10! Why not have a table between two families? There will also be some lovely craft stalls to buy from and delicious lunchtime refreshments and cakes on sale.

Free admission, so do come along and browse. You are certain to find a bargain! Telephone Barbara Morton on 01525 852368 for more details.

OXJAM Concert– 2 April, 3pm, St Mary's

Tickets £2, available on the door. There will also be a retiring collection for Oxfam. The concert will consist of a rich mix of popular show tunes, music from the movies, and much-loved pieces played with style!.

Four Villages Men's Breakfast Club – 22 April, 8am

Our next meeting is on 22 April when Chris Banks will be telling us all about Luton Airport's Chaplaincy & Emergency Response Team. We can now welcome members from outside the Four Villages. So, if you would like to come along or know someone who might, please contact me, Peter Bennett, on 221284.

Churches Together Concert, 20 May, 7.30pm SONGS AND TALES! An Audience with Jonathan Veira

Jonathan's considerable vocal and comic talents have resulted in him singing many of the leading comic baritone roles. These have received universal critical acclaim.

Jonathan regularly broadcasts on BBC radio and television and has recorded numerous CD's and television programs in many genres including light entertainment and religious broadcasting, particularly with **Songs of Praise**.

Bedding plants for sale

A range of seeds has been ordered including:

ageratum, cosmos, gazania, lobelia, marigold, mesembryanthemum, pansy, penstemon, petunia, rudbeckia, sunflower sweet peas, tithonia and violas. Orders to Gordon.

Carnival - 1 July

Please speak to Gordon Gray or Sharon Stilliard if you are available to help. Look out items that can be donated to Carnival, start sowing seeds, propagate plants, freeze cakes or make some jam. Please look out for opportunities to ask businesses for items for our Grand Draw or Silent Auction.

Open Gardens Festival – Sunday 23 July

One of the social highlights of the year in our villages is our Open Gardens event with gardens on display filled with summer colour. Could you offer to open your garden? Large or small – all gardens have something to offer visitors and past experience suggests that those who open their gardens are delighted by the positive feedback. Do please think about it, then speak to Kay Griffiths (222849).

Nearly 800 and still going strong

2019 will see the 800th anniversary of St Marys Church. Would you join a steering committee to develop, and implement, ideas for ways this historic anniversary can be celebrated? If so please speak to Catherine or Gordon.

Electronic distribution

After the success in gathering Email

addresses from our Christmas congregations we plan to distribute as many copies as possible of this Newsletter electronically from now on. This quarter, though, we will also use the paper version for everyone, so some people may receive two copies this month.

Subsequently paper copies will be available for those who need them. If you have not received an electronic copy but have Email, please let Gordon know your Email address on gordon@gordongray.plus.com.

Carnival Queen & Princess

St Mary's Village Carnival

Would you like to lead the Carnival Procession and help open the Carnival on Saturday 1st July?

Are you aged between 8 and 12 years?

If so you could be the Carnival Queen or Princess we are looking for.

To take part all you have to do is complete and return an entry form (details below) and come along to Eaton Bray Village Hall on **Sunday 9 April at 11.15am** when a draw to select the Queen, Princess and two Attendants will take place.

How to Enter

Please telephone Marlene Bennett on 01525 221378 for an entry form, or download a form from the Carnival website: www.stmarysvillagecarnival.com

Entry forms should be returned to Marlene by 5th April

JoAnn Latus SCHOOL OF DANCE

BOOK YOUR FREE
TRIAL LESSON NOW!

WITH OVER 20 YEARS EXPERIENCE, THE JOANN LATUS SCHOOL OF DANCE OFFERS A RANGE OF DIFFERENCE DANCE CLASSES FOR AGES 3 YEARS AND UPWARDS, WITH FEES STARTING FROM £45 PER TERM.

- Established for over 20 years
- Fully qualified teachers
- Girls and boys aged 3 years and upwards
- RAD Ballet, ISTD Tap, Modern and Jazz dance
- Regular examinations
- Street Dance classes
- Summer schools and theatre trips
- School Performance at Milton Keynes Theatre
- Pupils invited to dance at The Royal Albert Hall, Disneyland Paris and other prestigious venues

FOR MORE INFORMATION ABOUT OUR CLASSES PLEASE CONTACT US ON:

T 07800 518 654

E info@jolatusdance.co.uk

www.jolatusdance.co.uk

Weston Turville · Stoke Mandeville · Aston Clinton · Eaton Bray

WK WasteKing

Recycling today for tomorrow...



The Complete Waste Management Service



Local Skip Hire



Man & Van



Rubbish Clearance



Nationwide Grab Hire



Sweeper Hire

Call us today on: **01442 210047**
or email: skiporders@wasteking.co.uk

www.wasteking.co.uk

Unit 25, Airfield Industrial Estate, Long Marston, Cheddington HP23 4QR
Waste carrier CBU93920 - Transfer Site License 402839



Stay & Play Toddler Group

Musical Monkeys

Eaton Bray Village Hall
10-11.30am on Fridays

£4.50 for one adult and child
£1 for extra children/adults
0-6 months free

fitness 4fun



Get those muscles working! Tone and strengthen arms, legs, bums and tums – you'll look and feel great.

Why not give it a go? Only £5 per week for one hour of fun fitness. Pay-as-you-go, come when you can.

Come along and join our friendly group. Everyone welcome.

No need to book – just show up.

What: Fitness4Fun with Kay

Where: Edlesborough Memorial Hall

When: Every Friday, 10:00-11:00 am

Annual Parish Meeting, Edlesborough

To be held April 20th 2017 at Edlesborough Memorial Hall at 7.30pm

At this year's meeting we will have the opportunity to update residents on the activities of the past year including

- Update on the status of the Neighbourhood Plan
- Projects Completed
- Projects for the coming year

There is the opportunity to celebrate local activities and debate current issues. The minutes of the meeting held 100 years ago in 1917 are printed below. Come along and see how things have changed or not! We will not be talking about bread distribution to the poor thankfully. Also a poignant reminder that there was a war on.

Annual Parish Meeting held March 16th 1917

Mr J.Pratt, Chairman of the Parish Council presided. There were present Messrs G.Sear, F.Putman, W.C.Norman, A.H.Kemp, B.Gray, L.S.Mallett, W.Gray, P.C.Hickman, E.Bearon, E.Rollings, F.Hing, A.Gray, W.Snnoxell and E.Janes, Clerk.

The statement of Receipts and Payments of the Parish Council, Allotments and Charity accounts were presented by the Clerk and unanimously approved.

The two distributions of the Easter Bread is greatly appreciated by the recipients.

The total amounts (as received) for the Nurse Charity, is paid to the Treasurer.

Ginger's Charity £5-9s-11d, paid for bread £5-5s-0d, balance in hand 4s-11d.

On the proposition of Mr Mallet seconded by Mr W.Gray, it was agreed to buy War Certificates with the balance in hand of the Allotment accounts.

The question respecting repairs to Church Lane and the amount paid to Wing Rural District Council was again discussed. It appears according to the Parish Award that a piece of land containing 2a-1r-9p was awarded at the Inclosure in the year 1865 to the Vicar of Edlesborough subject to the repair of the Church Lane. The W.R.D Council agreed with the late Vicar (Rev C.J.Palmer) in the year 1911 to accept 30/- per year and take over the repairs. The Clerk was then instructed to enquire if any arrangements had been made with the present Vicar (Rev N.Dundas) and also whether income of the said land should or not be credited to Edlesborough to relieve the rates.

Assessment No. 243 in the valuation list.

The Chairman then brought before the meeting the question of what steps could be taken to try and get volunteers under the National Service scheme. After consideration it was agreed there.

Parish Council Clerk: Miss Penny Pataky
Office hours Mon – Fri 10.30am – 2.30pm (Excl. Wed). Email: clerk@edlesborough-pc.gov.uk
01525 229358 Website: www.edlesborough-pc.gov.uk
Facebook: www.facebook.com/

London Luton Airport

With an increase in aircraft in the area and in particular when the wind is from the East, we are getting some aircraft flying directly over the village to join the flight path into the airport. If you are disturbed by the traffic flying over the village, there is a complaints hotline number: 01582395382. This is an airport number where you can register your concerns. It is important to do this if we are to reduce these disturbances over our village.

If you need to complain about Heathrow flight noise the number is 0800 344 844. Email: noise_complaints@heathrow.com



"Excellent experience. I nearly fell asleep whilst having my fillings done! Very reassuring - no rush. I was made to feel completely at ease. Thank you!"
- R.R



Edlesborough Dental Practice



floss and smile

gentle dentistry



"Without doubt the most competent, gentle & lovely dentist...'
..friendly warm manner instantly put me at ease. I would highly recommend this practice '
-M.C

Edlesborough Dental Practice

Telephone: 01525 223175

11 Cow lane, Edlesborough, LU62HT

www.flossandsmile.co.uk



The Clear Alternative to Braces



Implants

HOME VISITS AVAILABLE ON FRIDAYS

EMERGENCY TEXT TO : 07590035899.

Dentist :
Dr A. Johar
GDC number : 111350

Hygienist:
Mrs Jane Showder
GDC number : 2344

**General Family Dentistry *Crowns *Bridges *Dentures *Smile Makeovers
*Tooth Whitening *Tooth straightening *Implants *Botox
*Hygienist *Sedation *0% Finance **

FREE QUOTATIONS



AJR

BUILDING SERVICES

Over 25 years experience

Friendly and Reliable Service

Fully insured

All aspects of building work undertaken:

- Kitchens & Bathrooms
- Refurbishments
- Garage Conversions & Extensions
- Plastering, Painting & Decorating
- Wall and Floor Tiling
- Patios and Fencing
- Fascias & Soffits
- General Maintenance

Mobile: 07931 308306 Tel: 01582 475428

Email: ajrbuildingservices@hotmail.com

**A McClelland
Pest Control**



FOR FAST RESPONSE CALL:

Mobile 0777 494 8415

Office 01582 872158



*specialists in: wasps - bees - ants
hornets - fleas - cockroaches - bed
bugs - pigeons - magpies - rabbits
rats - mice - moles - squirrels
foxes - mink - feral cats*



UNMARKED VEHICLES

For further information please call or email
amccellandpestcontrol33@gmail.com



STOCKISTS FOR



GUTTER BRUSH

**- All aspects of Pressure Washing -
Roof Cleaning / Coating specialists**

- Safe cleaning system using rope access
- Roofs cleaned using 'controlled' pressure washing
- All water recycled

For before and after photos please visit:

<http://www.facebook.com/greatoutdoorsandin>



0800 298 5883

www.greatoutdoorsandin.co.uk



**FREE INITIAL
CONSULTATION**

**ALL ACCOUNTING,
PAYROLL AND TAXATION
SERVICES COVERED**

Specialising in New Business Start-Ups

- Fixed Fee Quotes
- Unlimited Email and Telephone Support
- Back Office Solution
(dealing with your back office accounts function enabling you to focus on the rest of your business)

Please contact us for more information...

Gable End, Sparrow Hall Business Park, Leighton Road, Edlesborough, LU6 2ES

Call us on... 01525 229 539

enquiries@rileyaccounts.co.uk • www.rileyaccounts.co.uk

@RileyAccounts • Also on

"YOUR LOCAL ACCOUNTANT"

Brockley Designs

Design and Publishing Services

*Have you written a memoir, novel
or your family history?*

Interested in seeing it in print?

For an informational eBook and a free
one-half hour telephone consultation

Contact **Rebecca Shaw**

07931 950001

or +1.404.247.8269

shawrebecca@gmail.com

www.BrockleyDesigns.com

Leighton Plumbing & Heating

Oil fired boilers
service, repairs
& installations



All other aspects of plumbing
& heating undertaken

Oftec registered & insured

01525 385250
07774 567472

11 Woodman Close
Leighton Buzzard
Beds
LU7 3NU

leighton-plumbing@ntlworld.com

 **Stoten Gillam**
Chartered accountants
Chartered tax advisers

99 High Street South
Dunstable
LU6 3SF

Tel: (01582) 608601
www.stotengillam.co.uk

ICAEW
CHARTERED
ACCOUNTANTS



"Practical
Solutions for
Growing
Businesses"




We clean your oven...so you don't have to!

Call today to have your oven, hob, extractor or
Aga professionally cleaned

Contact Paul Joyce: Tel 01525 792761
Mob 07808 580718
pauljoyce@ovenwizards.com

The Quantum Energy Holistic Wellness Centre



Gift Vouchers

Balance Your Mind Body & Spirit



Health Screening
Personalised Remedies
Bioresonance

Far Infrared Detox Bed
Aqua Detox
Amethyst Biomat

Aura Chakra Imaging
& 40 page Reports



Polarised Light &
Colour Therapy

Vibrational Medicine
Tesla Energy Lights
Frequency Therapy

Profound Relaxation
Perkl Energy Spa
Flower Crystal Remedies





Ring Emma today for a free phone consultation

Also treated are; **Food Sensitivity** **Seasonal Affective Disorder (SAD)** **Environmental Sensitivity**
Allergy Sensitivity **Vitamin Mineral Assessments** **Desensitise to pets, environment & smoking**

Appointments 01525 221111 www.energy-medicine.uk emma@energy-medicine.uk
Buffalo House, Mill Road, Slapton, LU7 9BT (we share a drive with Equestrian Centre)

THE PERFECT PLACE FOR ANY OCCASION....

 *ACCOMMODATION - OFFERING A VARIETY OF
ROOMS/SUITES*

 *BREAKFAST, LUNCH OR DINNER
IN OUR HENRY'S RESTAURANT*

 *SUNDAY LUNCH*

 *MEETINGS*

 *WEDDING PACKAGES*

 *PRIVATE FUNCTIONS*

 *FUNERAL RECEPTIONS*

 *CHRISTMAS & NEW YEAR PARTIES*



FOR MORE INFORMATION ON WHAT WE OFFER,
PLEASE CALL US ON

01582 662201

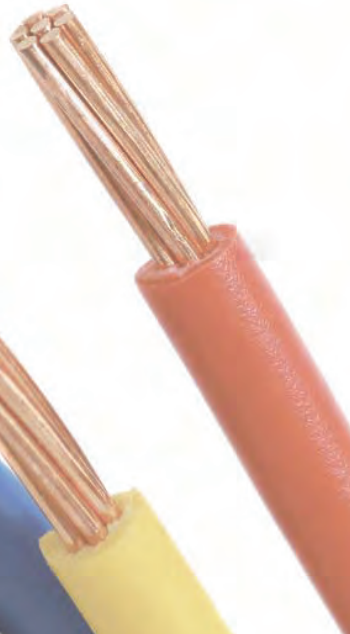
OR VISIT OUR WEBSITE.



ANDERTON ELECTRICS

Keeping you wired up.

- ✓ Free quotations, no obligations
- ✓ Emergency Work – day or night
- ✓ Domestic or Commercial
- ✓ A name you can trust



**FREE NO
OBLIGATION
QUOTATIONS**

Contact James direct on:
Mobile: **07771 698 151**
Office: **01582 343 123**

Email: james@andertonelectrics.co.uk

Proud members of
Checkatrade.com See our feedback on Check a trade
Where reputation matters
www.checkatrade.com/andertonelectrics



www.andertonelectrics.co.uk

D Scott and Sons Home Services Limited

contact us now on
01525 791563
07921 670437

Plumbing and Heating Specialists

-  **Boiler Repair**
-  **Boiler Installations**
-  **Powerflushing**
-  **Annual Servicing**
-  **Landlords Certificate**
-  **Magnetic System Filters**
-  **Radiator Valves**
-  **Oil Central Heating**

Other services...

We offer a full range of plumbing services including full bathroom refits, shower replacements, kitchen appliance installations, sinks, taps, traps & drainage.



**24/7
Call Out**



www.dscottandsons.com



TODDINGTON
INDEPENDENT FINANCIAL ADVICE

DO YOU NEED FINANCIAL ADVICE?

Can we help you to review
your current or proposed?

Mortgages, Insurances, Pensions & Investments,
Equity Release, Inheritance Tax, Wills and Trusts?

Free Will with Investments & Pensions over £30,000

Talk to us for a free initial consultation

LOCAL OFFICE: Toddington

Contact: Philip Hadlow

Tel/Fax: 01525 874100

Mobile 07768 277 532

or email: info@toddingtonifa.co.uk



Toddington Independent Financial Advice Ltd is authorised and regulated by the
Financial Conduct Authority, Registration Number 760687.

Registered office: Unit 9, Griffin Farm, Conger Lane, Toddington,
Bedfordshire, LU5 6BT, Company Number: 9931606

NEURO PHYSIO BERKHAMSTED

SPECIALIST NEUROLOGICAL PHYSIOTHERAPISTS

BSc (Hons) HPC Registered

Providing Physiotherapy treatment in your
own home if you have a neurological
deficit affecting your movement including

- Stroke
- Parkinsons Disease
- Multiple Sclerosis
- Balance Problems

07786 363638 / 07909982569

physio@neurophysioberkhamsted.co.uk

www.neurophysioberkhamsted.co.uk

All Trees & Hedges

Reliable & friendly service • Family run business
Competitive prices • Qualified advice • Fully Insured

Tree work undertaken

Tree felling • Precision dismantling • Crown reduction
Crown thinning • Crown lifting • Formative pruning
• Stump grinding • Stump removal
Deadwooding • TPO / conservation area work

Hedge work undertaken

Hedge reduction • Hedge planting • Hedge trimming
Shrub clearance • Hedge laying

Other Services

Grass Cutting • Fencing • Green Waste Recycling • General
Garden Maintenance • Tree Lighting • Logs / Kindling

CALL NOW ON:

07701 094 934
01525 220 823

E: info@alltreesandhedges.com

W: www.alltreesandhedges.com

CDM Builders Ltd
07984086029

GENERAL BUILDING
NEW HOMES
EXTENSIONS
CONSERVATORIES
ALTERATIONS
BRICKLAYING
GROUNDWORK
PATIOS

With over 20 years experience in the building trade

All aspects of work undertaken by our own professional tradesmen to a very high standard

Please contact Clive for a free quotation
T: 01525 222605 M: 07984086029
Email: Clive.munt@hotmail.co.uk

Coffee Tavern



Large Hall £6.00 per hour

Committee Room £3.50 per hour

Large Hall & Committee Room £8.00 per hour

Bookings 01525 220891
Stairlift and access ramp available



DANIEL
07956-500223

- PLUMBING
- DECORATING
- GENERAL HANDYMAN

Email: djhpropertyms@gmail.com



Electrical Services
www.rselectricalservices.com



**FULLY QUALIFIED
ELECTRICAL ENGINEER**
CPS Registered through NICEIC Scheme

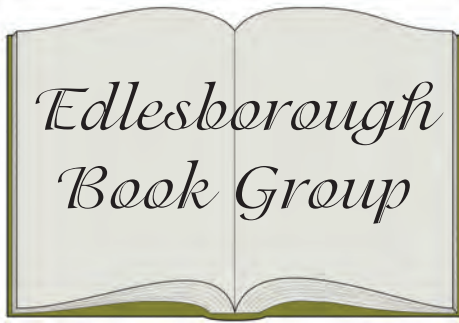
Competitive prices and quality service

Available for all your domestic and commercial electrical requirements

No job too small

Call Russell Sears:
07578 008567
01525 220008

17 Good Intent, Edlesborough



A Place Called Winter by Patrick Gale

Patrick Gale's latest novel *A Place Called Winter*, is a departure from his other novels, in as much as it is historical and much more complex in structure than his previous work. Diverse in subject matter and with skilled storytelling and characterisation, his books have always given pleasure; this however tells a more complex and detailed story of a man's struggle to find and remain true to his innermost nature and character.

Harry Kane and his brother are young men living a privileged existence in Edwardian England. Harry is very shy, with a stammer and is very dependent on his more gregarious brother to guide him. Following what is socially acceptable and what is expected of him, he drifts into marriage and soon a daughter is born. Although life is comfortable, Harry is vaguely dissatisfied but is unable to find a valid reason why this is so. Then, he meets an actor who offers voice coaching, and during the course of these lessons Harry realises that he can love another man passionately. An affair begins, but is discovered and revealed to Harry's in-laws, who demand that Harry not only leave his wife and daughter, but England as well. He realises

that because of the shame this discovery can bring to his family he must leave.

He decides to travel to Canada, where land is offered in exchange for a given time of work there. His sea voyage is brilliantly described and during this time he meets Troels Munck, a strange sadistic character, who in the guise of a mentor, becomes a dominant figure in Harry's life. The subsequent arrival in the prairies and struggle for survival there is vividly portrayed as he learns the various skills needed. He gradually becomes adjusted to this place called Winter and forms close friendships with his neighbours, but this being Harry's story, things are about to go wrong.

The third section of the book deals with Harry's mental struggle and the different ideas of the time concerning treatment of mental illness and homosexuality. It is a complicated, but not difficult read, due to Patrick Gale's skill as an author. The subject dealt with is not easy, but these difficulties were true at that time. In fact, it is only relatively recently that people can express their true sexuality without fear. *Winter, Saskatchewan*, is a real place founded in 1908 around a railway station. Under the Dominion Lands Act, a quarter section, that is 160 acres of land, was

given to the settler after three years. Patrick Gale's great grandfather was one such settler and inspired the book.

Most of our group agreed that they enjoyed the book. The subject matter was not to the taste of two of our members but one lady, who had not enjoyed the book to start with, thought that she would go on to finish it.



The White Lion

Driving home from Totterhoe to Eaton Bray I can see a slightly sad outline of the Whipsnade White Lion on the hillside. I often think wouldn't it be lovely if someone could organise a working party to clean it up and illuminate it at night again. (maybe solar lights in this day and age, sponsored by a local business?)

The famous white lion chalk-cut figure - emblem of Zoological society of London, was begun in November 1931. It was designed by R. B. Brook Greaves and took eighteen months to finish. "The dimensions of the lion from the nose to the end of the tail is 483 feet; the depth of body is 122 feet, the length of front and hind legs 103 feet and 145 feet respectively, the tail is 13 feet wide and 205 feet long".

There was some talk of painting or turfing it over during World War Two as it was felt to be too good a landmark for German bombers, but in the end it was left as it was felt that the long, straight Watling Street was just as good a landmark about which nothing could be done. Until 1985 it was, along with much of the zoo itself, in the parish of Studham, but the zoo and figure were then transferred into Whipsnade

The Zoological Society of London was founded in 1826 by Sir Stamford Raffles with the aim of promoting the worldwide



conservation of animals and their habitats. To this end ZSL London Zoo in Regents Park, London was established.

Almost 100 years later, Sir Peter Chalmers Mitchell (ZSL Secretary 1903-1935) was inspired by a visit to the Bronx Zoological Park to create a park in Britain as a conservation centre.

Hall Farm, a derelict farm on the Dunstable Downs, 30 miles to the north of London was purchased by the Zoological Society of London in 1926 for £480 12s 10d. The site was fenced, roads built and trees planted.

The first animals arrived at the park in 1928, including two Lady Amherst's pheasants, a golden pheasant, and five red junglefowl. Others soon followed including muntjac, llama, wombats and skunks.

Whipsnade Park Zoo opened on Sunday 23 May 1931. It was the first open zoo in Europe to be easily accessible to the visiting public. It was an immediate success and received over 38,000 visitors on the following Monday. The brown bear enclosure is a surviving feature from the earliest days of the zoo.

The collection of animals was boosted in 1932 by the purchase of a collection from a defunct travelling menagerie and some of the larger animals walked to the zoo from Dunstable station.

During the Second World War, the zoo acted as a refuge for animals evacuated from the Regents Park London Zoo. The celebrity giant pandas Ming, Sung and Tang were among these animals but were soon returned to London to boost morale

in the capital. During 1940, 41 bombs fell on the park with little damage to the zoo structure; a 3-year-old giraffe named Boxer, which had been born at the zoo, was frightened to death by the explosions. Some of the ponds in the park are the remains of bomb craters from this period. Today ZSL Whipsnade Zoo is one of Europe's largest wildlife conservation

parks. It is home to around 3000 animals, many of which are endangered in the wild. The majority of the animals are kept within sizeable enclosures; others, such as Peafowl, Patagonian Maras, and Red-necked Wallabies, roam freely around the park, as can any young visitors. What a great place to take the grandchildren for the day to use up all their energy!



Edlesborough W.I.

Edlesborough WI celebrated two events in February. The first was a talk by Kareen

Stuart on, 'Lasting Powers of Attorney – DIY'. Kareen, a solicitor who specialises in 'Services for Later Life', gave an informative talk, which all the members found interesting

Kareen talked about how life and the law have changed since she first started practising law in the early 1970's. The average life span then was three score and ten years and the 'Power of Attorney' as it was known was one's representative and all the business had to pass through the hands of a solicitor and was expensive. The system has changed, as life has itself. People are now living longer; 90+ years.

The Power of Attorney is still valid but is only concerned with the financial aspect. Whereas, Lasting Power of Attorney is in two parts: 1) Property and Finance 2) Health and Welfare. Both parts must be registered before they can be used but it is up to the individual to decide when she or he would like the Lasting Power of Attorney to start.

When one is choosing who to have as an 'attorney' Kareen emphasised the importance of thinking carefully. If one does not trust that person one should not be appointing them and do not appoint on the grounds of sentimentality. Four people can be chosen but if there are more, it can be rather tricky. If there are two, they must be unanimous.

A very big distinction between Power of Attorney and the Lasting Power of Attorney is

that the Power of Attorney is only concerned with the financial aspect. Whereas, the Lasting Power of Attorney being in two parts: 1) Property and Finance 2) Health and Welfare, means a very harrowing and expensive time can be avoided. For instance, a relative might be unable to make vital end of life decisions and so it is the responsibility of the Court of Protection to make those decisions. With the Lasting Power of Attorney, this does not need to happen. As long as one writes down what she or he wants to do while fit and well and have it placed in the Lasting Power of Attorney forms. These forms are much simpler to complete since last July and packs are free of charge to obtain from the Office of the Public Guardian (a government office). There is also a free guide on how to fill in the forms and a fee of £110.00 for processing per person x two if having both forms – money and health.

Kareen's talk hi-lighted the importance of making these decisions while one is fit and able to do so and have these recorded in legal documents, which a person can do quite easily by oneself and have it legally registered at a relatively low cost.

The second event was the WI coffee morning which raised the grand sum of £150.60 and where members and non-members were able to relax, talk and enjoy the delicious scones. A special mention is made to the ladies who produced the delectable food, to our secretary, Maureen, for offering her home as the venue and our president, Jenny, for overseeing the occasion.

✍ Jackie Flint

April at the Grove



Film

Loving (12A) - Mon 3 April 2.30pm, Fri 14 April 7.30pm

Lion (PG) - Sun 9 April 7.30pm, Mon 8 May 2.30pm

The Birth of a Nation (15) - Mon 10 April 2.30pm, Thu 13 April 7.30pm

The Lego Batman Movie (U) - Thu 13 April 2.30pm, Fri 14 April 2.30pm, Tue 18 April 2.30pm

Labyrinth (U) - Mon 17 April 2.30pm & 5pm

The Founder (12A) - Tue 18 April 7.30pm, Mon 24 April 2.30pm

Other Entertainment

Are you missing the full audience participation, laughter and fun for all the family that pantomime brings? Well, good news, you don't have to wait until Christmas to enjoy it all again! Follow the yellow brick road to the



Grove Theatre, Dunstable this April as a fantastic all-new Easter pantomime version of **The Wizard of Oz** bursts onto the stage on **Tuesday 4 April at 3pm & 7pm** and **Wednesday 5 April at 1pm & 5pm**.

Tamsin Greig is Malvolia in a new twist on **Shakespeare's** classic comedy of mistaken identity. A ship is wrecked on the rocks. Viola is washed ashore but her twin brother Sebastian is lost. Determined to survive on her own, she steps out to explore a new land. So begins a whirlwind of mistaken identity and unrequited love in **Twelfth Night** as an encore screening on **Sunday 9 April at 2pm**.

Fizz and balloons at the ready... **Grove Theatre** is nearly ten and preparations are being made for a special birthday party on Friday 21 April! Grove Theatre's beautiful history began with an opening gala on 21 April, 2007 although the venue was officially opened in July of the same year by the Duke of Gloucester. Ten years on, Grove Theatre would like to celebrate this milestone with as many of you as

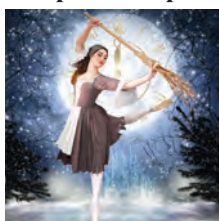


possible!

Indulge in **High Tea in the afternoon at 12pm** and then **party in the evening from 7.30pm** with live music from some familiar faces, including stars of 2016 pantomime and **Britain's Got Talent** semi-

finalists **Kieran and Sarah**, as well as local musicians **The Blue Rinse Band**. Let's get this party started! Tickets for each event are **£10** with a proportion of the proceeds being donated to **WheelPower** – a charity dedicated to providing opportunities for disabled people to find a sport they enjoy.

Or if you're saying **I Want It All** and have a **Crazy Little Thing Called Love for Queen**, then let **Supreme Queen** entertain you with an homage to the world's most theatrical and dramatic rock band. Front man **Scott Maley** plays an uncannily realistic Freddy, with just the right look, stage persona and the most incredibly powerful voice. And enormously talented **Nathan Mathers** brings all the electric guitar virtuosity of **Brian May** to stage. The promise is **We Will Rock You** with **Supreme Queen** on **Sunday 23 April at 7.30pm**.



Vienna Festival Ballet is proud to present the classic tale of **Cinderella**, one of the best-known rags-to-riches fairy tales of all time. Its timeless narrative resonates through the ages in many forms, such as film or stage adaptation, but never so beautifully as through dance, which is brought to the **Grove Theatre, Dunstable** on **Sunday 30 April at 5pm**.

Ticket prices vary; for more information or to book, call the Box Office on 01582 60 20 80 or visit the website at www.grovetheatre.co.uk.

Canine Quintet Move to Whipsnade

Rare species to move in at ZSL Whipsnade Zoo as an African hunting dog pack arrive this Easter

The UK's largest zoo is set to get tails wagging with the exciting arrival of a pack of endangered African hunting dogs at ZSL Whipsnade Zoo this April.

Also known as African wild dogs or painted dogs, five members of the fascinatingly charismatic species will be introduced to a huge new exhibit that has been built specifically for them.

The pack will initially be made up of five females – a group of sisters named Malindi, BeeBee, Brandy, Donnie and Ginger – who are relocating from Whipsnade's sister-site ZSL London Zoo.

It is hoped that the group will form a new conservation breeding group in the future, as part of the European Endangered Species Programme (EEP) with the hope that males will join the pack in the future.



The species' scientific name, *Lycaon pictus*, translates to 'painted wolf' and refers to the animal's white, black and brown mottled coat, the pattern of which is unique to each individual.

From a raised viewing platform, visitors to Whipsnade will be able to spot perhaps the dogs' most defining feature – a pair of huge, rounded ears that not only help them to pick up vocal calls of pack members with their amazing hearing, but

are also used to help keep the dogs cool.

Renowned for their social nature, hunting dogs live in tight-knit units of up to 25 individuals; an attribute that is key to them being one of the most successful predators in the world, boasting a remarkable 'kill rate' per hunt of up to 70% compared to an estimated 30% for a pride of lions.

Unfortunately, such formidable predatory success is no guarantee of survival though; African hunting dogs are classified as Endangered on IUCN's Red List of Threatened Species and due to threats such as habitat fragmentation and human-wildlife conflict with farmers their wild populations are in decline.

The international conservation charity, ZSL (the Zoological Society of London) which runs ZSL Whipsnade Zoo, works in Kenya to help hunting dogs and people to share the same landscapes.

Part of ZSL's conservation field work involves fitting hunting dogs with GPS collars to track their movements in the wild; the dogs arriving at Whipsnade will sport their own 'dog collar' trackers to help our scientists to trial new technology.

To help celebrate the launch of the new African hunting dogs' enclosure, popular characters

Chase and Marshall from kids' TV show PAW Patrol are coming to ZSL Whipsnade Zoo on Saturday 8 and Sunday 9 April. The heroic pups will be making personal appearances at intervals throughout the day to see their fans.

To find out more about African hunting dogs, and to be among the first to see the pack in their new den; please visit www.zsl.org to book tickets for ZSL Whipsnade Zoo.



Dagnall Weather Station (AONB)

Weather Conditions for February 2017

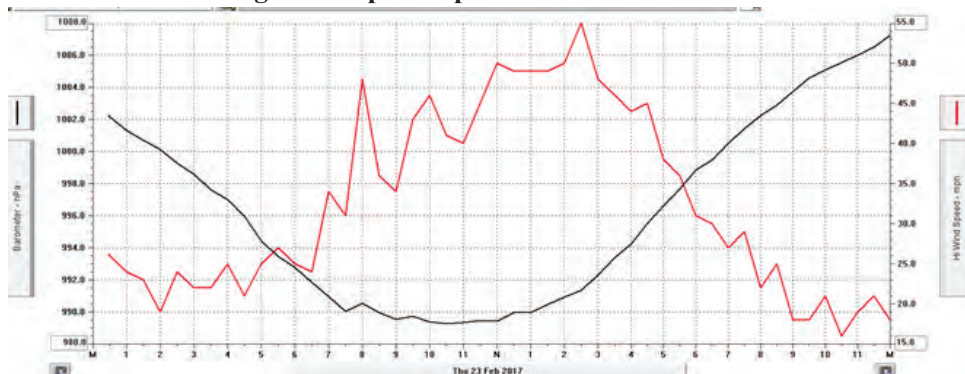


Elevation: 450 ft - Latitude: 51° 50' 13" North - Longitude: 0° 33' 34" West

February was a mild month with the Mean/ Average 6.3°C. On 16 days in the month the temperature reached double figures with a high of 15.5°C. Although it was lower than average rain fall. The main event on the 23rd was "Storm Doris" at 07.00hrs. the wind started to increase gusting to 34mph this continued until 19.30hrs the records show that winds were reaching 41-50mph continuously but at 14.30hrs it reached a peak of 55mph. Walking around Dagnall you could see the damage it had caused fences down, branches broken off and on the allotment site a greenhouse was blown on to the neighbouring plot.

	High	Date/Time	Low	Date/Time
Temperature:	15.5°C	20 Feb 12.00	- 1.5°C	6 Feb 07.30
Mean Temperature	6.3°C			
Dewpoint:	12.2°C	20 Feb 12.30	- 2.1°C	6 Feb 07.30
Humidity:	98%	1 Feb 08.30	57%	24 Feb 15.00
Barometer:	1029.7 mb	8 Feb 23.30	982.3 mb	27 Feb 16.00
Wind Speed	55 mph NW	23 Feb 14.30	Months avg.	6.9 mph
Wind Chill:	12.9°C	20 Feb 13.00	-3.7°C	11 Feb 06.00
Dominant Wind:	W			
*Rain Days: 18(T), 14(R)		Wettest Day 6 Feb	8.41 mm	0.331 1ns
Monthly Rain:	Total	February 2015	42.8 mm	1.685 ins
Yearly Rain:	Total	2 Month	118.0 mm	4.646ins

This chart shows February 23rd all 24 hours of "Storm Doris" "passing through Dagnall. Black line shows the pressure dropping rapidly just past midnight and as it gets lower the wind increases and as the pressure rises the wind starts to decrease. Red line high wind speed mph.



Visit: http://bit.ly/weather_dagnall for weather data 24 hours a day, updated every minute, this site forecast and much more and the original site www.dagnallweather.co.uk. If anyone has questions, comments or wishes to contact me please email: david@dagnallweather.co.uk or telephone: 01442 843883. Dagnall weather now has an app for your ipad & iphone! Just go to the apple store, search for Wunderstation and follow the instructions to Dagnall Weather Station. Now updated every minute.



HM Government

The Better Broadband Subsidy Scheme

basicbroadbandchecker.culture.gov.uk

ABOUT THE SCHEME

The UK government is committed to providing every home and business across the country with access to a basic broadband service

If you can't get a broadband speed of at least 2Mb per second, you could qualify for a subsidised connection **worth up to £350** to boost your internet speed

The scheme is delivered in partnership with Local Broadband Projects across England, Scotland and Northern Ireland

FIND OUT IF YOU'RE ELIGIBLE

- Visit basicbroadbandchecker.culture.gov.uk to find out if you are eligible for a subsidy
- Fill out a simple application form
- If you qualify you will be emailed a unique code
- Use the code with selected service providers to get a subsidised broadband service



basicbroadbandchecker.culture.gov.uk

Salvation Sound

Celebrating 130 years of The Salvation Army in Eaton Bray and the surrounding villages



Last month I promised pictures – so here they are!



The first picture was taken around 1944 is of the Raisey sisters who are still active at The Salvation Army in Eaton Bray (Joan still plays the piano for us every Sunday); the second is of the Sunbeams and Guards circa 1946 and features Mrs Lily Piggott; and the final picture is a nativity scene in 1947.

Unfortunately the first history book has been lost but accounts of the 50th and 100th Anniversary celebrations make interesting reading.

50th Anniversary – *‘A very happy time, but o the whole congregations were disappointing due to two other attractions in the village. In such a small place it is hopeless to arrange any special meetings when there is something else on’* (times don’t change much – Eaton Bray and the villages have always been busy places!).

On the Saturday evening *‘we commenced with a birthday tea.... a very happy gathering. Mrs Wallace and Mrs E Gray were present, Mr Boyd, MP, was coming but at the last minute was detained. The Sunday meetings were conducted by Major & Mrs Tom Watts. In the afternoon the Major gave a lecture on broken earthenware... These meetings were a time of blessing to all who were present.’*

100th Anniversary – *‘The weekend was conducted by the Chief of the Staff commissioner and Mrs Gauntlett. A civic welcome was held.. in our hall... the chairman of South Beds District Council was present as was the Reverend N Jones representing the local Methodist Church.. The weekend was a time of encouragement and blessings’*

We are really delight that this happy association with the Methodist Church still continues today and Eaton Bray Methodist Church has kindly agreed that The Salvation Army can use their church for our 130th Celebrations in April this year.

The Salvation Army in the Present – The corps (church) is still active in the community. You are warmly welcomed to join us for:

- Holy Week prayer stations (see poster): film ‘The Risen’ and Maundy Thursday Reflections (see separate poster for more details)
- Messy Church Breakfast, Easter Egg Hunt and Celebration – Easter Sunday at 10am
- 130th Anniversary Celebrations – 22 & 23 April with special guest Commissioner Bill Cochrane (see separate poster for more details)

For more information and to book for specific events please contact:

Hilary Chadwick (Envoy) 07932 057490; hilary.chadwick@salvationarmy.org.uk

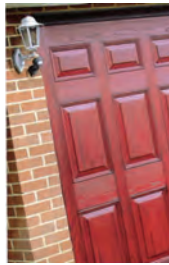


Premier Garage Doors & Gates



Quality Garage Doors

- ✓ Superb choice of designs in metal, wood and fibreglass
- ✓ Any size door made to your requirements
- ✓ Large selection of spares & fast repair service available
- ✓ New or existing doors converted to automatic
- ✓ Professionally fitted by own expert craftsmen
- ✓ Prompt free estimates & advice
- ✓ We cover all areas



(EST 1984)

DIY kits available
Insurance work welcome
Council approved
Remote control gates also available



Unit 7, Sparrow Hall Farm, Leighton Road, Edlesborough LU6 2ES

01525 220212

www.premiergaragedoors.co.uk

JANES

FLOORING DIGITAL APPLIANCES CYCLES SERVICE

JANES FLOORING



No obligation quote
Borrow samples
Uplift & disposal
Help with furniture

JANES DIGITAL



Same day delivery
Install & set-up
Tune-in
Take old away

JANES APPLIANCES



Competitive on price
Same day delivery
Install & set-up
Take old away

JANES CYCLES



Wide range
Built & ready to ride

JANES SERVICE



Repair & service
Appliances & TVs
Cycles
Small electricals



01525 220208



4-6 High Street
Edlesborough, LU6 2HS



www.janesltd.co.uk