

# FOCUS



**February 2017**

**The local village magazine just for Us!  
Eaton Bray, Edlesborough, Northall & Dagnall  
Focus is online at [www.thefocusmagazine.co.uk](http://www.thefocusmagazine.co.uk)**

# *The White Horse Inn At Eaton Bray*

Market Square  
Eaton Bray  
Beds  
LU6 2DG  
01525 220 231  
[www.eatonbraypub.co.uk](http://www.eatonbraypub.co.uk)



  
**KEEP  
CALM  
ITS  
A  
BARGAIN**

**Midweek fixed price lunch  
Tuesday to Friday 11.30am til 2.30pm  
Great traditional pub dishes  
1 course £7 : 2 courses £11 : 3 courses £15**

**Keep up to date see our website at**

**[www.eatonbraypub.co.uk](http://www.eatonbraypub.co.uk)**

**Valentine's weekend  
From Friday 10<sup>th</sup> Feb  
Chef Lee Mark presents his  
Valentines Specials menu  
A La Carte Menu also  
available**



**Find us on Facebook and visit our new website to  
view our full range of offers and promotions**

invites you to

# Café Community

Eaton Bray  
Methodist  
Church

Saturday 11th February 2017

11.00am to 1.00pm

Charity of the month:  
Church Action Against Poverty

Relax & chat with friends,  
coffee/light lunch

All ages welcome (inc. activity area).



## NORTHALL BAPTIST CHAPEL

### Chapel Lane, Northall

(just beyond the 30 speed limit signs on  
the road towards Leighton Buzzard)

Everyone is welcome to our Sunday  
worship each week between 11am and  
12.30pm including tea/coffee and time to  
talk together.

For more information contact:

John Hazell 01525 218142

Email [northallchapel@btinternet.com](mailto:northallchapel@btinternet.com)

There has been a Baptist Chapel in Northall  
for more than 200 years. Today we continue  
to seek to worship God, serve him in our  
daily lives and support and encourage one  
another in the difficult and the joyful times.

## The Focus Magazine Committee

**Editor:** Sally Siddons

34 Wallace Drive, Eaton Bray 221733

**Email:** [sallysid@hotmail.com](mailto:sallysid@hotmail.com)

**Assistant Editor:** Liz Constable

Eaton Bray 222234

**Email:** [lizconstable@hotmail.co.uk](mailto:lizconstable@hotmail.co.uk)

**Dagnall Representative:** Sue Cawdell

10 Deans Meadow, Dagnall 01442 842200

**Circulation Manager:** John Plater

41 Church Lane, Eaton Bray 221095

**Treasurer/Leaflet Enquiries:** Ken Coates

10 The Nurseries, Eaton Bray 220868

**Business Advertising:** Sally Siddons

34 Wallace Drive, Eaton Bray 221733

**Design and Layout:** Tracey Moren

(Moren Associates Limited) 01525 229695

**Printed by:** Prioxy Press

Dunstable 01582 699851

Copy for publication to the Editor by the

**10th of the month**

*Focus accepts no responsibility as to the  
accuracy or content of any advertising or articles  
published in 'this' magazine, neither do they  
reflect the opinion of members of the Committee.*

*© Articles published in Focus may not be  
reproduced without permission.*

**Focus would like to remind contributors  
that the deadline for articles is the 10th  
of the preceding month**

*Kindly Note*

*If the event you wish to advertise falls in the first  
week of the month, it is advisable to get the details  
into Focus a month earlier. The magazines are  
not delivered from the printers until the first of the  
month, therefore it takes a few days for them all to  
be circulated throughout the village.*

*✍️ Editor*

**Focus is online at [www.thefocusmagazine.co.uk](http://www.thefocusmagazine.co.uk)**

# Village Diary February 2017



## Weekly

- Mon-Fri (term time) Eaton Bray Pre-school, Eaton Bray Lower School, 01525 220468
- Mon-Fri (term time) Dagnall Under 5's, Dagnall Village Hall, 9.15am - 12.15pm, Mrs Ann Tobin 07816 358342
- Mon-Fri (term time) Edlesborough Pre-School, Edlesborough School, 01525 220431  
manager@edlesborough.bucks.sch.uk
- Mon-Thu (term time) Totternhoe Pre-school, mornings, Totternhoe Lower School, Michelle Urbanowicz on 01582 668841
- Mondays Pilates, 10.45am, Totternhoe Memorial Hall, Lisa: 07799 893489
- Mondays Dagnall Community Choir, All Saints Church 7.45 – 9.45pm
- Mondays (term time) Movement and exercise classes with a dance flavour, Northall Village hall 2-3.30. Contact Jan 01442 864271.
- Mondays Curtain Call Youth Theatre 5-7.30pm, Eaton Bray Village Hall, Gavyn 01525 220525
- Mondays Curtain Call Theatre Group - 7:30-10:30pm Eaton Bray Village Hall, Sheila - sdtwinkletoes@yahoo.co.uk
- Mondays KFPA ISTD Classical Ballet classes, 3+yrs, 4.15pm, Edlesborough Memorial Hall, www.kfpa.co.uk
- Tuesdays Line Dancing, 1.30-3p.m., Eaton Bray Village Hall, Lyn Stubbs 220731
- Tuesdays Pilates, 10-11am, Eaton Bray Village Hall, Nicky Roussou 07861 162680
- Tuesdays Totternhoe Baby & Toddler Group, 9.30-11.30am, St. Giles Church Hall, Ruth Allen, 01525 222468 or 07796 265174 or email ruthallen002@gmail.com
- Tuesdays Northall Baby & Toddler Group, 9:30-11:30am, (open in the Summer School Holidays) Northall Village Hall, Sam George: 07748 152379, Tracy Bennett: 07803 123318
- Tuesdays Tap & Ballet Classes, JoAnn Latus School of Dance, 4-8pm, Eaton Bray Village Hall, 01582 620576
- Tuesdays Circuit Training - Eaton Bray School Hall - 7:15-8:15pm - Tel: 07969 572153
- Tuesdays Coffee Morning, Bring & Buy, Table Top Sale, 10-12noon, Salvation Army Hall, Booth Place, Eaton Bray
- Fortnightly
- Wednesdays Pilates, 7.15pm, Northall Village Hall, Lisa: 07799 893489
- Wednesdays Egyptian Dance Class, 7.30-8.45pm at Eaton Bray Village Hall. Contact: Soraya on 07976 964316 for more details
- Wednesdays Northall & District Age Concern Wednesday Club, 10am - 3pm, Northall Village Hall, Contact Anna on 07854 230243
- Wednesdays Dynamic Yoga 6.30-7.30pm £5 Eaton Bray Coffee Tavern, Keira 07936 693696
- Wednesdays (term time) Caterpillars Baby and Toddler Group 10am to 11:30am, Grace Baptist Church, Moor End, Edlesborough, £1 per family unit, Frances King 01525 229 610
- Wednesdays Pilates 6.45 & 7.45pm, Dagnall Village Hall, Andrea on 07855 138005 or andrea@naturalpilates.co.uk
- Wednesdays Art of Ju Jitsu martial arts class, Eaton Bray Village Hall, 7 -7.45pm ages 6-15yrs
- Thursdays Yoga, Northall Village Hall, 11.30am-1pm 01525 377542
- Thursdays Baby & Toddler Group, Salvation Army Hall, Booth Place, Eaton Bray, 9.30-11.30am
- Thursdays Jazzercise, 9.30-10.30am, Eaton Bray Village Hall, Angela Veryard, 01525 715208
- Thursdays KFPA Street dance classes 4+yrs 4pm, Edlesborough Memorial Hall, www.kfpa.co.uk
- Thursdays Tae Kwon-do, Dagnall Village Hall, 5.45-7.30pm 07813 755785
- Thursdays Clubbercise 7.30 - 8.30pm. Eaton Bray Hall - Gina Flitton 07846421756
- Fridays Tap & Ballet Classes, JoAnn Latus School of Dance, 4-8pm, Eaton Bray Village Hall, 01582 620576
- Fridays (term time) "Little Luvvies" baby ballet classes 10am-11.30am. Contact Emma Whittemore on 01525 376124
- Fridays (term time) Kids Club 6:00pm to 7:00pm Grace Baptist Church, Moor End, Edlesborough (across from the post office) Frances King 01525 229610

# Village Diary February 2017

Fridays	Keep Fit class, Edlesborough Mermorial Hall 10 - 11am
Fridays	Stay & Play toddler group, 'Musical Monkeys' at the Eaton Bray Village Hall, 10-11.30am, £4.50 for one adult and child, £1 for extra children/adults, 0-6months free
Saturdays	Jazzercise, 9.30-10.30am, Eaton Bray Village Hall, Angela Veryard, 01525 715208
Saturdays	KFPA Musical Theatre classes 4+yrs www.kfpa.co.uk, 10am, Edlesborough Memorial Hall
Sundays	Sundays Worship at 10:30am and 6pm Grace Baptist Church, Moor End, Edlesborough (across from the post office). Barry King 01525 229610
Last Sunday	Messy Church, 3-5pm at The Salvation Army Booth Place
<b>Monthly</b>	
1st Monday	Eaton Bray Parish Council Meeting, 7.30pm, The Coffee Tavern (except January-2nd Monday)
1st Monday	Eaton Bray W.I. Meeting, 7.30pm. Eaton Bray Methodist Church Hall. Contact Margaret Jones on 01525 220991
1st & 3rd Tuesday	Dunstable & District Orbit (social and charitable) Club meet at Dunstable Rugby Club at 8pm. For details contact 01525 222441 or 01582 755147
1st Saturday	St. Mary's Church, Eaton Bray Coffee Morning & Plant Sale, 10:30am - 12 noon
2nd & 4th Tuesday	TOTS, St Mary's, Eaton Bray, 2pm
2nd Tuesday	Dunstable & District Local History Society meeting, 7.45pm, Methodist Church Hall, Dunstable (opposite Wilkinson)
2nd Tuesday	Edlesborough W.I. Meeting, 7.30 pm, Edlesborough Memorial Hall
2nd Wednesday	St.Mary's Ladies Guild, 2pm, St.Mary's, Eaton Bray
2nd Wednesday	Eaton Bray & Edlesborough Lions Club, 7.30pm, The Coffee Tavern
2nd Thursday	CAMEO Coffee, tea & chat, 10am-12noon, Edlesborough Methodist Church
2nd Saturday	Workshops Dynamic Yoga 9.30-11am £10 Eaton Bray Coffee Tavern, Keira 07936 693696
3rd Thursday	Edlesborough Parish Council Meeting, 7.30pm, Memorial Hall
3rd Sunday	Lunch club 11.30 to 2.00pm, Eaton Bray Village Hall, Chris Hewitt 222288
4th Tuesday	The Filling Station, 7:30pm, Bellows Mill
Last Saturday	Coffee Morning, 10:30-12 noon, Edlesborough Methodist Church
Last Sunday	Messy Church, 3-5pm, Salvation Army, Booth Place, Eaton Bray, 07932 057490

## Other Regular Events

5th	Beds Area Narrow Gauge Model Railway Club Meeting, 11.30am-4.30pm, Eaton Bray Village Hall
10th	Leukaemia Research Coffee Morning with sherry and mince pies, 2 Dunstable Road, Dagnall 10.30am. All welcome.
11th	Cafe Community, 11am-1pm, Eaton Bray Methodist Church
14th	Dagnall Over Sixties, Lunch at the Red Lion Pub in Dagnall at 1pm followed by a quiz and raffle

## One Off/Annual/Irregular Events

14th	Giblin Property Valentines Coffee Morning, 10am - 12pm, Giblin Property Office
------	--

## FOR SALE

### Ladies Rayleigh Caprice Bicycle

16" frame, white, hardly used

Extras: Front basket, Helmet, front/rear lights, tool kit, tyre pump, 2 wheel stands, Self-coiling Master Lock, sleeveless Hi-Vis jacket.

£100.00 ono. Collection only.

**Tel: 01525 229664**

# Village Info



**EDaN Community Transport**

Viv Hill: 01442 842623

## Village Hall Bookings

To book your local village hall for an event please contact the following:

**Northall:** Lorna Cabbage Tel: 07857 318696 Email: northallvhbookings@gmail.com

**Eaton Bray:** Norman Lee Tel: 01525 222831

Email: bookings@ebvh.co.uk Website www.ebvh.co.uk

**Dagnall:** Elizabeth Coates Tel: 01442 842550

**Edlesborough Memorial Hall:** Penny Pataky, Tel: 01525 229358

Email: manager@edlesborough-pc.gov.uk

## Police Contact Numbers...

*making neighbourhoods safer together*

**General Assistance (Recommended Number): 101    Emergency: 999**

### Bedfordshire Police (Eaton Bray)

Leighton Buzzard Police Station/Kathryn Horgan: 01582 473411

Typetalk: 18001 01582 473418

Email: LPT.LeightonBuzzardLinslade&Rural@bedfordshire.pnn.police.uk

### Thames Valley Police (Edlesborough, Dagnall & Northall)

PCSO Jackie Dodson Mobile: 07800 703 524

Email: NHPT@thamesvalley.pnn.police.uk

## Defibrillator Locations

These units are registered with the Ambulance Services. To access them, please phone 999. You will be given the access code and the location of the unit will be confirmed. The defibrillator is easy and safe to use. The units can be found on the outside walls of the following locations:

**Dagnall:** Red Lion Public House

**Eaton Bray:** The Coffee Tavern

**Edlesborough:** Edlesborough Memorial Hall

**Northall:** The Swan Public House

Eaton Bray



**Helpline: 07930987064**

**Manned phone hours: 9am to 5pm,**

**Monday to Friday**

(An answering service is available for out-of-hours calls)

Call us if you want help with getting to the surgery/hospital, collecting prescriptions, minor errands, form-filling, letter-writing, small d-i-y jobs, walking your pet or other small needs.

# KEEP BRITAIN TIDY

## “The Great British Spring Clean”

3rd - 5th March 2017



Let's join in and be proud of our Villages!

Join “The Big Litter Pick” on

**Saturday 4th March 10am – 12 noon**

Meet on Edlesborough Green by the Village sign

We'll cover as many areas as we can.

Or

Why not “do your own thing!” Have a street collection.

You'll need rubber gloves and stout shoes or boots.

Contact Lorna: 01525 220361 for more information.

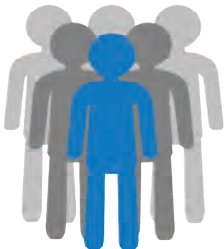


## EATON BRAY PARISH COUNCIL



Please come and help to run your village

### BECOME A PARISH COUNCILLOR



The Parish Council is nine members of the public

We come to each Parish Council Meeting in the Coffee Tavern on the 1<sup>st</sup> Monday of each month and spend on average around six hours each month advising and helping to run our village.



**At present we have a vacancy – will YOU come and join us?**

If yes, please contact the Parish Clerk – contact details below.

You can also view our website for more details



Heidi Head, Parish Clerk & RFO

Email: [clerk@ebpc.co.uk](mailto:clerk@ebpc.co.uk) - Telephone/Fax: 01525 221464 - Website: [www.ebpc.co.uk](http://www.ebpc.co.uk)  
Office Hours: Tuesday/Thursday/Friday 09:30-13:30hrs [messages can be left on answerphone]



# Eaton Bray with Edlesborough

## Parish News

Church Warden & Pastoral Matters: (01525 220527)

Reader: Gordon Gray (01525 220136)

Website: [www.stmaryseatonbray.org.uk](http://www.stmaryseatonbray.org.uk)

Facebook: St Mary's Eaton Bray

I do love this time of year. With the sun getting higher in the sky and generating a little bit of warmth there is a sense that winter will soon begin to slip behind us. There are signs in the garden of new growth: early snowdrops are appearing, daffodil shoots are rising boldly up into the cold air and the birds are in their brightest plumage and beginning to sing their songs of territorial claim. It won't be long and we will soon be looking out for the first frogspawn.

By the time you read this the first seeds I have sown this year should have germinated and the earliest potatoes will have been chitted, soon to be planted in a frost free place. When that happens thoughts inevitably turn to the possibility of a harvest of tasty new potatoes, perhaps as early as June.

And, inevitably, I begin to anticipate those long, warm summer days. No doubt there are quite a few households like mine around our villages, in which teams of people are busy planning the summer events that make our villages such a good place in which to live: cricket fixtures, School Fetes, the Beer Festival, the Carnival, Open Gardens. There is a sense of excitement in the air, and an expectancy of good times to come.

It is no different at St Mary's where there is a growing sense of anticipation, a hope of good times ahead for, over the Christmas period, we learnt that we have appointed a new vicar, Revd Joy Cousans, currently serving two rural parishes just to the north of Sheffield, who will be formally installed by the Bishop of St Albans at a special service of celebration on 26 April.

We want to be ready for her arrival so expect to see plenty of activity in and around the Church and the Vicarage by members of St Mary's congregation, aided by people on Community Payback Service who have made a big difference to the overgrown garden. Until Joy arrives we will be trying to build on the legacy left by Coralie. Hopefully we will have completed the new 'kitchen in a cupboard' at the rear of the church and, through a series of special services for families, we will continue the growth of our congregation. The next such service is a non-communion service at 10am on **18 February** in which I will be giving money to someone – come along and find out why! Our choir, fresh from its superb singing over Christmas, continues to grow its repertoire under our Director of Music, Stephen Axford. In an age in which children get fewer chances to sing, St Mary's choir offers a great opportunity for youngsters to learn a skill that many adults take for granted (and what's more choristers get paid for their singing!) If you would like more information come along to the 10am service any Sunday and talk to Stephen, Gordon or Catherine.

At time when the world of politics seems so uncertain, St Mary's can provide an oasis of hope, joy (and Joy), and the love of the Lord Jesus Christ.

✉ Gordon, Reader at St Mary's Eaton Bray



## Services at St Mary's Church

**SUNDAYS :** 8.00am HOLY COMMUNION  
10.00am PARISH SUNG HOLY COMMUNION

**On Third Sunday of each month:**

**10.00am – WORSHIP FOR EVERYONE** a shorter, less formal service for families. (For anyone wishing to attend a service where Holy Communion is offered, there is a Family Communion at 10.30am at All Saints' Church, Dagnall, where visitors are assured of a warm welcome).

**WEEK-DAYS:**

**Tuesday: 2.00pm** TOTS (Tots on Tuesdays) (2nd & 4th Tuesdays)

**Wednesday: 10.00am** Holy Communion

*EVERYONE WELCOME AT THESE SERVICES*

## FOR SALE

### Antique Pine office desk

Good quality. 1 large and 2 small drawers on left hand side and 1 small drawer on right hand side. Hideaway sliding keyboard shelf. Size - 1.4m long x 780 mm high, 580mm depth. Cost new £295. Well made. Happy to send a picture. **£55**

### Office Chair

Adjustable for both height and back, blue. Good condition **£15**

### Antique Pine Display Unit or Book Shelf

Very nice, 3 smaller shelves which you can move up for down for books and 1 larger for bigger books or can also be used in an office. It also has a storage drawer. Good quality, well made and in good condition. 6ft 6ins high x 3ft 10ins wide x 10ins depth.

Cost new £295 **£60**

**Tel - 07734 111654**

## Appledown's Rescue Dog of the Month



This handsome lad is Jed, a lurcher who was born in 2015. He is a lively young dog who will need owners with the time and energy for an active dog. A good walk followed by a cosy place to curl up would suit this affectionate dog very well. He is not used to being left alone so will need time to adjust. He could probably live with a female dog pending introductions. He cannot live in the Dacorum area.

If you can offer Jed or any of our other dogs a loving and secure home, please call in at the kennels any day between 10 a.m. and 4 p.m. or phone us for more details. Please note that there are restrictions on rehoming dogs to families with children under seven years of age. Full details of the rehoming process can be found on our website, or

please contact the kennels.

**Appledown Rescue and Rehoming Kennels Harling Road, Eaton Bray LU6 1QY**

Call 01525 220383 or e-mail: [appledown.kennels@btinternet.com](mailto:appledown.kennels@btinternet.com)

Website: [www.appledownrescue.co.uk](http://www.appledownrescue.co.uk) **Follow us on Facebook & Twitter!**



# St Mary's Village Carnival 2017 "TRANSPORT"



**It's time to start thinking about this year's Carnival on 1st July 2017  
with the theme "Transport"**

## **An Appeal to all Local Businesses**

The ever increasing foot print of the Carnival, with visitors from Aylesbury, Milton Keynes, Dunstable, Luton and Hemel Hempstead, gives an ideal vehicle for promoting your business. As an organising committee we can work with you to find the best means of advertising your businesses to the crowds who attend the Carnival.

Many thanks to businesses that supported the carnival in 2016, we hope you will be able to support us once again and we welcome new businesses that can provide support this year for the first time.

## **How can you get involved?**

Please consider one or more of the following some of which may be tax deductible:

- Advertise in the Carnival Programme and / or the arena
- Donate a prize relating to your business to the Grand Draw
- Donate an item relating to your business for the Silent Auction
- Take part in the procession
- Loan of vehicles for the procession / traffic management / logistics
- Make a cash donation to the Carnival
- Any other way you would like to be involved; let us know!

If you would like your business to be involved in the Carnival in any way please contact Gordon Gray on 220136 or via the carnival website:- [www.stmarysvillagecarnival.com](http://www.stmarysvillagecarnival.com).

## \*\*\* **HELP REQUIRED!** \*\*\*

Help is needed for two roles in carnival organisation this year.

- **Coordination of Major Attractions;** roundabouts, kiddie's rides, bungee jumping etc. This involves liaising with the attraction owners so that they arrive at the right time on the day and know where they are going. This would mean shadowing the present member of the committee this year and then taking over in 2018.
- **Carnival Queen Organisation;** collating the names of entrants for the carnival Queen draw which usually happens in April, and then letting their families know where they have to be on the day and when.

There is plenty of help in getting to know these activities, so you will not be on your own!

If you would like to be involved with the carnival and fancy one of these roles contact Gordon Gray on the number above.



### **Dunstable & District Local History Society**

**Tuesday 14 February, 7.45pm  
Failed to Return**

Popular speaker Tony Eaton talks about the fatal flights of pioneer pilot Amy Johnson and film star Leslie Howard, who crashed in the sea and whose bodies were never recovered.

**Methodist Church Hall, Dunstable  
Visitors always welcome £2**



# UNICORN WINDOWS LTD

“WHERE QUALITY & SERVICE ARE NOT A MYTH”

[www.unicornwindows.co.uk](http://www.unicornwindows.co.uk)

**Tel: 01525 854272**



Unit 3 Youngs Industrial Estate, Stanbridge Road, Leighton Buzzard

**comput@mation**  
computer support & services

## Computer Support for Business & Home

### Problem Solving:

- Virus & Spyware Removal
- Internet & Email Assistance
- Fault Diagnostics
- Repairs & Upgrades
- Slow Running PC's

### Sales:

- Desktops, Laptops & Tablets
- Printers & Peripherals
- Software

### Services:

- PC, Mac & Linux Support
- Wired & Wireless Networks
- Data Recovery
- Install & Set-up
- Health Checks

On-site Visits:  
Office Hours & Evenings  
by appointment

For friendly advice call John Wallace: 07968 536068 or 01525 261381  
Email: [john@computamtion.co.uk](mailto:john@computamtion.co.uk)  
Web: [www.computamtion.co.uk](http://www.computamtion.co.uk)

Computamtion Services Ltd - Est.1999 with over 25 years experience  
9a Lower Way, Great Brickhill, Buckinghamshire, MK17 9AG

# Carpet & Upholstery Cleaning

**Professional & Local**

**All work guaranteed - not happy, don't pay**

**Powerful equipment means drier much quicker than other methods**

**100% Guaranteed no chemicals left in carpet when dry therefore will not easily resoil & perfectly safe for children & pets**

**Recommendations account for 90% of my work**

**Absolutely no hard sell**

**Telephone Colin for a Free Quote**

**DEEP-CLEAN**

**01525 851 811**

[www.deep-cleaners.co.uk](http://www.deep-cleaners.co.uk)

Email: [colin@deep-cleaners.co.uk](mailto:colin@deep-cleaners.co.uk)

## **EDLESBOROUGH SURGERY**

**11 Cow Lane Edlesborough**

**Enquiries - 01525 221630 Appointments - 01525 220333**

**[www.edlesboroughsurgery.co.uk](http://www.edlesboroughsurgery.co.uk)**

**Dr J R Bell, Dr Heather White, Dr Stephanie Johnston  
Dr Kirsten Riemer, Dr Charlotte Fisher**

**Friendly village Practice offering a wide range of health services including coils/implants, minor surgery, travel advice, in house blood tests, on-line appointments and repeat prescription ordering. Nurse Practitioners offering acute clinics with same day appointments. Also, Midwife, Health Visitors in attendance. Local District Nurse service.**

**Long established training Practice with a rotation of qualified doctors.**

## **EDLESBOROUGH PHARMACY**

**01525 223181**

**Pharmacist – Mitul Patel**

**Friendly reliable professional service at the pharmacy and well established delivery service to the villages. Professional advice always available.**

**All doctors/dentists/veterinary and hospital prescriptions dispensed.**

**Herbal/Homeopathic products available. In addition – Disability Aids, e.g. wheelchairs, walking frames, incontinence aids, Ostomy products, Malaria prophylaxis, Erectile dysfunction, Salbutamol supply without prescription. Flu vaccination available.**



For all your painting & decorating requirements  
 Domestic and Commercial  
 call Max for a free estimate with no obligation  
[maxbro@btinternet.com](mailto:maxbro@btinternet.com)

**D & E HINES**  
**High-Class**  
**Butchers**  
 Quality Beef, Pork & Lamb  
 Grade A Poultry  
 BBQ & Sausage Speciality  
 Renowned for 'Bunkers Sausages'  
 Telephone: 01525 220413  
 98 High Street, Eaton Bray

30 Years Experience  
 Domestic & Commercial Security



**Burglar Alarms**  
**Redcare Monitored Systems**  
**Intercoms**  
**CCTV**  
**Access Systems**  
**Locks**



CERTIFICATE NO. NAC/G/2113

Quality Installations – Competitive Prices  
 Insurance Approved Free Surveys

**AAA SECURITY**

01525 378222

Email: [sales@aaasecurity.co.uk](mailto:sales@aaasecurity.co.uk)

[www.aaasecurity.co.uk](http://www.aaasecurity.co.uk)





Local family run business - Not a franchise

All chemicals used are Eco-friendly, non-toxic, non caustic and non allergenic  
**All work guaranteed and fully insured**

All products are Child, Pet and Pregnant Safe

- Ovens & Hobs
- Extractor Hoods
- Microwave Ovens
- Agas
- Fridges
- Carpets
- Rugs
- Upholstery
- BBQs
- Freezers



☎ 01525 22 19 22 or 0800 122 3393

🌐 [www.ecotechovenandcarpetcleaning.co.uk](http://www.ecotechovenandcarpetcleaning.co.uk)

@ [info@ecotechovencleaning.co.uk](mailto:info@ecotechovencleaning.co.uk)

# *Dominic Woolcott*

## Painter & Decorator



- Internal & External
- Plastering & Coving
- Insurance Work
- 20 Years Experience
- Competitive Rates

**For a professional job call:  
01525 229682 or 07747 042879**

# P. DYER ELECTRICAL

For all your Electrical & Testing & Inspection needs

- Re-wires
- Testing & Inspection
- Security Systems/Lighting
- LED & Low Energy Lighting
- CCTV Systems
- PAT Testing
- Fuse Boards
- Fault Finding/Repairs

Fully insured, Part P registered, all work guaranteed.  
Fast, friendly, reliable, local electrician. For a free,  
no-obligation estimate, call Paul on:



**Tel: 01525 222109**  
**Mobile: 07850 682815**



David John Harris  
*Green Fingers*  
(Established 1992)

All Fencing Work • All Gates • Paving • Patios  
Driveways • Shingle • Hedge Setting and Cutting  
Grass Cutting • Turfing Specialist • Exterior  
Painting Service • Sheds Small Building Work  
Trees & Shrubs Supplied

**Tel/Fax: 01525 221745**  
**Mobile: 07889 143713**

*Barry Cato*  
*Motor Repairs*  
Est. 1981

Servicing, repairs and MOT's arranged

**Workshop at:**  
r/o Norfolk House Farm, Harling Road  
Eaton Bray, Dunstable, Beds, LU6 1QY

**Tel: 01525 221681 (workshop)**  
**07836 650015 (mobile)**

**GYM & TONIC**

WANT TO GET FIT, HAVE A HEALTHIER LIFESTYLE & IMPROVE THE WAY YOU LOOK & FEEL?

The following can be provided in our Gym in Edlesborough or in your home

\* **A Health & Fitness Consultation** \*  
\* **Personal Training** \* **Massage** \*

Ruth Webb Dip. PT & ST, Member of: Inst of Sports Therapists & Register of Nutritional Therapists

**Tel:01525 223074 Mob:07812 163979**

**D NICHOLSON**  
**PLUMBING REPAIRS**  
and **INSTALLATIONS**  
NO JOB TOO SMALL

• Emergencies • Free Estimates  
• No call out charges

Dave Nicholson

**MOBILE: 07976 975604**  
**HOME: 01525 872335**

**City & Guilds Qualified**

For all your building needs look no further



# BRIGGS

## BUILDING & CARPENTRY SERVICES

Established 1981



For a professional, friendly service call:

**(01525) 221767**

**(07970) 214439**

### Domestic & Commercial

Extensions

Alterations

Patios

Renovations

Kitchens

Decking

Conversions

Driveways

Garden Walls

Narrow access mini digger, skip loader  
and dumper services available

All Work Guaranteed

Free Estimates



# Flicks & Bangs

HAIR SALON

A warm, friendly salon offering a wide range of bespoke hair services for all the family. Feel free to pop in for a complimentary consultation.

[www.flicksandbangs.com](http://www.flicksandbangs.com)

### Flicks & Bangs

66 High Street  
Eaton Bray  
Nr. Dunstable  
Beds LU6 2DP

**01525 221252**




### Opening Hours

**Mon** Closed  
**Tue** 9 am - 5 pm  
**Wed** 9 am - 5 pm  
**Thu** 9 am - 8 pm  
**Fri** 9 am - 7 pm  
**Sat** 8 am - 4 pm  
**Sun** Closed



**Pinstripes** **signs**  
**HAVE MOVED**  
 12 HARMILL IND EST  
 GROVEBURY ROAD  
 LEIGHTON BUZZARD  
 BEDS LU7 4FF  
**COME AND VISIT US**  
 SIGNS-GRAPHICS-CLOTHING  
 VANS-SHOPS-BANNERS-BUSINESS CARDS  
 BOARDS-STICKERS-CANVAS PRINTS  
 MAGNETIC CAR SIGNS-WINDOWS  
**01525 851080**  
**07973 167779**  
[www.pinstripessigns.co.uk](http://www.pinstripessigns.co.uk)  
 Join us on Facebook - Pinstripes Signs Graphics Clothing

**WASHING MACHINE REPAIRS**  
 ALSO  
 DISHWASHERS, TUMBLE DRIERS,  
 AND ELECTRIC COOKERS



Call  
**ANDERSON D.R.S.**  
**01582 665764**  
[www.andersondrs.co.uk](http://www.andersondrs.co.uk)  
 SALES AND RENTALS AVAILABLE

**Lee Hutt**   
 Heating & Plumbing Services

**Bathrooms**  
 DESIGN & INSTALLATION  
**TILING**  
**HEATING**  
**TAPS**  
**Leaks**  
**CALL OUTS**  
**Free Estimates**



 01525 222145  07971 559185

*Patricia's Cuisine*  
 Catering For All Occasions

- Buffets, Dinners •
- Christenings, Weddings, Funerals •
- Promotions & Business Lunches •

*For Enquiries & Menu*  
 Meadside Farm, 104 High Street,  
 Eaton Bray, Bedfordshire, LU6 2DP  
**Telephone: 01525 222174**



**P.J.BRINKLOW**  
**Electrical Contractor**  
**01525 220469**  
**07860 781330**  
**43 Pebblemoor**  
**Edlesborough**

*“A wonderful  
place to be!”*



# Eaton Bray Academy



**Tel: 01525 220468**

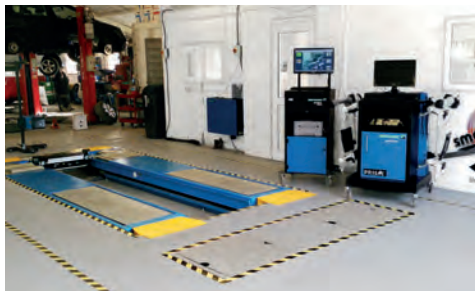
**Email: [admin@eba.ec](mailto:admin@eba.ec)**

**[www.eatonbrayacademy.co.uk](http://www.eatonbrayacademy.co.uk)**

# smartAUTOGROUP

ESTABLISHED LOCALLY FOR 14 YEARS

Fully equipped Car Bodyshop, Service Workshop  
& MOT Bay



- New MOT Bay
- 4 Wheel Alignment & Tyre Fitting
- Specialists in Complete Classic Car Restoration
- Dealer Trained Technicians
- Ford, Vauxhall, VW, Audi
- Extensive Experience in Prestige Car Paintwork and Repair
- One-Stop-Shop for all your Servicing, Repairs, Bodywork & Maintenance
- Accident & Vandalism Damage
- All Insurance Work Undertaken - We can also cover your Excess and provide a Courtesy Vehicle (subject to T's & C's)
- Mobile Car Body Repairs – Fully Equipped Vans that come to your Home or Office.
- Alloy Wheels – Dents - Bumpers – Chips – Scratches - Scuffs
- Free Collection and Delivery, Loan Cars and Lifts when required

We pride ourselves on always being competitive for the right job.

**£10 OFF WITH  
THIS ADVERT**



Call us on **01582 664772** or visit **[www.smartautogroup.co.uk](http://www.smartautogroup.co.uk)**

Units 17 & 18a, Icknield Way Farm, Tring Road, Eaton Bray, Dunstable LU6 2JX

# Nigel's Thoughts

## Methodist Minister



One of the things that I was able to do in that wonderful long week between Christmas and New Year (the television having disappointed, as usual) was to catch up on some reading.

I'm sure many readers will be familiar with the phrase "You are what you eat" (turkey anyone...), but how about "You are what you read"?

One of the books that I was able to tackle over the holiday is by William Dalrymple, my favourite travel writer. Entitled 'Nine Lives – In Search of the Sacred in Modern India' it was first published back in 2009. Dalrymple enables the stories of nine unique and surprising lives to be heard. These religious individuals each stand out in cultures which are increasingly becoming systemised and in which true freedom and 'difference' are threatened.

Prasannamarti Mataji is a Nun of the Jain faith, living an incredibly austere and self-emptying interior life of meditation which one can only but admire and respect, even if we are never likely to encounter anyone quite like her anywhere near the North Chilterns! It was her perspective on life which engaged and changed me at the start of a New Year. "We have no choice" she says, "Each of us is born, goes through childhood, becomes an adult, ages and dies. It's a natural process and you can't go back...", "The more you lead a good life, the clearer and sharper your thoughts become – you begin to be able to cut through the illusions of the world, and to see things as they really are". I think it's about time I found more time to read and pray.

It may be that the books we read, the websites we surf, the TV we watch and the relationships we pay attention to not only shape who we currently are but who we shall become.

Maybe, we really do come to embody "what we read". I and other Christians firmly hope that this is possible as we seek to live as followers of the God-Man, Jesus, whose story has so challenged and changed our lives.

Perhaps you would like to read his story for yourself and see if you too can discover new and exciting directions for your life.

Peace be with you,

✍️ Nigel



## Giblin Property present a Valentines Coffee Morning

In aid of Appledown Kennels

Tuesday 14<sup>th</sup> February 10am – 12pm

At the office of Giblin Property on the corner of High  
Street and Wallace Drive

**FREE RAFFLE**

**Come for coffee & cake**

4a Wallace Drive, Eaton Bray, LU6 2DF

# EDaN Litter Pickers at Large!



It all started in June when a group of twelve like-minded ladies met over coffee and cake one evening to discuss the state of our Villages and what we could do to remedy the situation.

In the six months or so that we have been active, we have collected an impressive (not the most appropriate word!) amount of rubbish, courtesy of the local litter louts. We are on first name terms with the lovely lady at AVDC!! We have tended to concentrate on our own patches to start with -Northall (home patch for quite a few of us), Edlesborough (five more) and the grotty area round the Traveller's Rest roundabout and lay-by (1 member) We are aware that this is only the tip of the iceberg but there aren't very many of us and it's like housework – it keeps coming back!!....

The Main Road through the villages, though very prone to litter remains a big problem as we can only tackle the parts with footpaths safely – and you can bet the worst of the litter is on the other side and the parts we can't reach because of the heavy traffic. Just before Christmas we had a concerted effort and covered most of Northall, Cow Lane, the Green and Pavilion Car Park and Cocks Close in Edlesborough and the Main Road from the Traveller's Rest to Cocks Close. Mostly cans, fast food and coffee litter, a tyre and, surprisingly, some items of women's underwear (what DO they get up to in the Pavilion Car Park??!!) In all, about 20 bags of assorted rubbish to be collected by the indefatigable team from Aylesbury.

We stood down over Christmas (presents, puddings and carol services etc. took precedence) and while we have been off duty, the nice people who cannot bear to see the roadsides and verges clean and tidy have been back at work. In Eaton Bray Road/Northall Road, a litter lout has dumped 23 bags of builder's rubble at intervals down the length of the road and someone appears to have had a party at the Northall end judging by the number of discarded cans.

I read in the paper that this year "Keep Britain Tidy" is launching a big campaign starting with the "Great British Spring Clean" which is due to happen between March 3rd to 5th. According to the paper, last year 300,00 bags of rubbish were collected – and I don't think ours were included in that!!

Now I am sure that most of the litter we collect is **not** deposited by people from our villages – **is it?!!** – but perhaps if you are ever in the position to drop a can or empty crisp packet, you should maybe think again.... And if, after reading this, you think you might like to help us to keep the villages tidy, do contact me. We are supposed to have a social time at the end of each session but I must say that in the main we are so busy that

we haven't always had time for that bit. Perhaps there will be more time for the coffee and cakes in 2017! I certainly hope so because that would mean that we had less rubbish to clear up and so had more time to chat!

Thank you for taking the time to read this!

✉Lorna Cabbage

01525 220361 [lornacabbage@btinternet.com](mailto:lornacabbage@btinternet.com)





# Edlesborough Parish Council News

Including Edlesborough, Dagnall and Northall

## Edlesborough Green Roundabout and Play Area

The roundabout on Edlesborough Green has been temporarily removed for complete refurbishment. Safety fencing has been erected around the wet pour area and EPC reminds parishioners that this area is not to be entered. EPC are currently investigating removing the centre fence and bark in the play area. The intention is to replace the bark with safety matting and grass as in the newer side of the play area. It will be necessary to temporarily close part of the play area for approximately six weeks to allow the grass seed time to germinate. EPC ask that parishioners do not enter the area during this time. The main gate to the play area will also be replaced.



## Neighbourhood Plan Pre-Submission Plan

The consultation period for the Pre-Submission Plan has now ended. EPC thanks parishioners for attending the meetings and their responses. EPC and the Neighbourhood Plan Steering Group will now analyse all the responses and changes may be made to the plan where appropriate. EPC will then submit the Neighbourhood Plan to AVDC for approval. If AVDC approve it an independent Government Inspector will examine it to see if it meets the requirements laid down for a Neighbourhood Plan. If so it may then be approved.

Finally, the plan will be put to all parish residents on the Electoral Register to vote Yes or No. A simple majority of those who vote is needed to determine the result.

We have to have a plan that allows for the building of the minimum number of dwellings required by the Aylesbury Vale Local Plan. This should then give us protection from additional opportunistic developments until the next planning cycle in 2033.

If we fail to get an approved plan for our parish then AVDC and the developers will decide what, when and where to build for the next 15+ years.

## Christmas in the Parish

Edlesborough Parish Council would like to thank:

- The EDaN Beautification Team for organising Christmas lights for the new Christmas tree on Edlesborough Green and for dressing Edlesborough Memorial Hall in Christmas lights. This looked truly festive.
- Cllr Mrs Owen for organising the hanging of Christmas Wreaths for Dagnall.
- Paulette Taylor and her team; Susan Hill, David Hill, Beverley Sage, Timothy and Daniel Michaelson-Yeates and Bas Westrope for the wonderful Christmas Wreaths that lined Edlesborough High Street.

EPC also thank the following for their generous sponsorship of the wreaths:

Able Bathrooms

Baby Moments UK

Freed Veneers

Janes

Marbled Meats of Northall

NMJ Service Centre

Speedcheck Foundations

The Complete Tennis Court Service

Aaron Fencing

Duncan Tomblin

Heirloom

Litchfield Floor Renovations

NG Autos

RS Electrical Services

Summerleys Residents

Two new Christmas Trees were planted and lit in the Parish. One outside Dagnall Village Hall in memory of Kathy Bovington and another in Northall near the village sign in memory of Lin Sargeant.

### **Streetlights**

Please report failed streetlights in Edlesborough, Dagnall and Northall to the Clerk for repair. When making a report please ensure you are as specific as possible about the location.



### **White Lines & Road Markings**

EPC continue to press TfB for the promised repainting of the road markings and replacement of the cats eyes at the junctions of Ivinghoe Way, Pebblemoor and the Leighton Road (A4146). If you notice any other road markings in need of repainting please report those to Bucks CC.

### **Allotments**

Edlesborough Parish Council currently has vacant allotments. Anyone wishing to take on an allotment should contact the Clerk. Fees are £2 per pole and plots range in size from 5 – 20 poles.

### **Speedwatch**

The EDaN Traffic Management team are looking for volunteers to help with their new Sentinel device. If you have an interest in slowing down traffic in the villages or are concerned about Road Safety, please contact Louise Turner on 01442 843123 or by email at [louisefanthorpe@yahoo.co.uk](mailto:louisefanthorpe@yahoo.co.uk)



### **Edlesborough Parish Council Meetings**

The next Edlesborough Parish Council Meetings will take place as follows

Edlesborough Memorial Hall, Thursday 16th February 2017

Edlesborough Memorial Hall, Thursday 16th March 2017

The meetings will commence at 7:30pm.

All Parishioners are welcome to attend all Ordinary Parish Council meetings and may ask questions, raise issues and give suggestions during the Open Forum before the formal start of the meeting. The full minutes of the Parish Council meetings are normally available to view on the website or from the Parish Clerk.

### **Edlesborough Parish Council Contact Information:**

Clerk: Miss Penny Pataky *Office hours Mon – Fri 10.30am – 2.30pm (Excl. Wed)*

Email: [clerk@edlesborough-pc.gov.uk](mailto:clerk@edlesborough-pc.gov.uk) 01525 229358 Website: [www.edlesborough-pc.gov.uk](http://www.edlesborough-pc.gov.uk)

Facebook: [www.facebook.com/EDANParishCouncil](http://www.facebook.com/EDANParishCouncil)

## **Thank You**

Friends of Dagnall CE School & Dagnall Under Fives would like to say a very big thank you to everyone who visited our Christmas fair on Saturday the 3rd December. Brimming with festive cheer, for two hours, games were played, prizes were won, delicious homemade refreshments were devoured and Santa listened intently to many a wish list.

> Another big thank you goes to the many local businesses that provided prizes for our raffle, without this very generous support our fair would not have been the success it was. Finally, thank you to our parents and helpers for your kind donations and time you gave in helping to create a fabulous event for our community. FODS & DUFS



## HIGHLIGHTS OF THE MINUTES

A full/detailed copy of the minutes for Eaton Bray Parish Council can be found on our website.

A hard copy of the minutes can also be viewed on the Parish Council's notice board at The Coffee Tavern.

### Meeting of Eaton Bray Parish Council held on

**Monday 7th November 2016 from 7:30pm at The Coffee Tavern**

#### Central Beds Council (CBC) – Councillor Ken Janes

Website: [www.centralbedfordshire.gov.uk](http://www.centralbedfordshire.gov.uk) - Customer Services: 0300 300 8302 -

Email: [customers@centralbedfordshire.gov.uk](mailto:customers@centralbedfordshire.gov.uk)

#### Bedfordshire Police

Your Local Policing Team: **Non-emergency call 101 / All emergencies 999**



#### Vacancy - Parish Councillor

There is a vacancy for a Parish Councillor on Eaton Bray Parish Council. If you are interested in joining the council please email the Parish Clerk or visit our website for more details

#### Christmas 2016

Once again the Parish Council organised for Christmas Carols & Brass Band to visit the village, lighted Christmas trees at the Coffee Tavern, two large Christmas trees purchased for display at Market Square/Three Corners and wreaths displayed along the road. Christmas has indeed come to Eaton Bray. (See update in Dec minutes.)

#### Overgrown Trees/Bushes

Once again the Parish Council wish to remind residents that they need to ensure their hedges/bushes/trees do not encroach onto the public footpath, or block streetlights; to ensure that they are cut back to their property boundary line, allowing free access/visibility for footpath users.



#### Housing Need Survey Letters

It was brought to the Parish Council's attention that a number of properties in the village recently received surveys on housing within the parish. The Council wished to reiterate that this is not a Parish Council survey, nor a CBC survey; but is believed to be a survey being carried out by a private developer.

#### Eaton Bray – Neighbourhood Plan

Please see the Neighbourhood Plan report printed in the FOCUS magazine, for an update on this matter.

#### Happy New Year

Eaton Bray Parish Council would like to take this opportunity to wish all residents of the parish a Happy New Year.

### Meeting of Eaton Bray Parish Council held on

**Monday 5th December 2016 from 7:30pm at The Coffee Tavern**

#### Central Beds Council (CBC) – Councillor Ken Janes

- Grass cutting: CBC are currently going out to tender. There will be an additional two cuts over the winter period for areas previously missed, in readiness for the new season.
- Cllr. Janes acknowledged receipt of an email regarding alleged potential 300+ housing



development in the parish; currently (as of 05/12/2016) no applications have been submitted..

### **Christmas Carols & Brass Band, 23rd December 2016 – Cancellation**

Just prior to the event, the Parish Council were contacted by the Brass Band cancelling the booking due to the bad weather; with such short notice the Parish Council did put cancellation notices on the Eaton Bray website/facebook pages and also asked others, if able, to let people know. Obviously with such short notice we were unable to inform everyone. The Parish Council were very disappointed with this cancellation, especially after the work that had been put in. Hopefully next year the weather will not cause any issues and the event will once again run.

### **Car Park Markings: Recreation Ground**

The Council are in the process of painting car park marking in the recreation ground car park. Planned work due December/January.

### **Church Lane: Planning Notice displayed**

The Council are to look into this matter further and report back their findings.

### **Overgrown Trees/Bushes**

Another reminder by the Parish Council that residents need to ensure their hedges/bushes/trees do not encroach onto the public footpath, or block streetlights; please cut back any overgrowth to your property boundary line, allowing free access/visibility for footpath users.

**Next Parish Council Meeting Date:** Held in The Coffee Tavern (1st floor)  
Monday 6th February 2017 from 7:30pm



Heidi Head, Parish Clerk & RFO

Email: [clerk@ebpc.co.uk](mailto:clerk@ebpc.co.uk) - Telephone/Fax: 01525 221464 - Website: [www.ebpc.co.uk](http://www.ebpc.co.uk)

Office Hours: Tuesday/Thursday/Friday 09:30-13:30hrs [messages can be left on answerphone]

Follow Eaton Bray Parish Council on Facebook and Twitter  
Keep up to date with what is going on in the parish

## **More Schoolreaders Needed**

**Schoolreaders are currently looking for reading volunteers from within the Parish to partner with local primary schools.**

We are a national charity set up to improve children's literacy.

**We place volunteers in local schools to listen to children read on a one to one basis.** The aim is to encourage reading, improve literacy and build confidence to give children the best possible start in life.

Schoolreaders is flexible and will match your availability to an appropriate school in the local area. No qualifications are required – simply a good command of spoken and written English. You should also be able to commit 1-2 hours a week during term time. If you or anyone you know would like to be involved in this worthwhile project supporting children in the community, **please visit our website at [www.schoolreaders.org](http://www.schoolreaders.org)** and complete the online application.

Alternatively, **call a member of the Schoolreaders team on 01234 924111 or email [admin@schoolreaders.org](mailto:admin@schoolreaders.org)** .



# LONDON PROPERTY EXHIBITION



Friday 17th March 2017

Get the LONDON coverage your property needs – showcase your home at our next LONDON EXHIBITION

Utilising our property showroom, located in the prestigious Park Lane area, we offer a remarkable opportunity to feature your property to the lucrative London and international investormarket. If you would like to showcase your home at the exhibition, call our office for a free, up-to-date appraisal today. Giblin Property 01525 220605 info@giblinproperty.co.uk

# 20<sup>th</sup> Cali-R<sup>+</sup>



## ANNIVERSARY

### 2017 CALI-R SOUL NIGHTS with SID HUDSON

**Friday February 10<sup>th</sup>**

United Services Club, Dunstable  
8pm - 12.30am Tickets: £9.50  
£50 lucky ticket prize  
01582 4754607

**Saturday March 11<sup>th</sup>**

Venue 360, Luton  
8pm - 1am Tickets: £15  
£50 lucky ticket prize  
Featuring  
LIVE on Stage  
*Hitsville*  
The Sound of Motown



**Tickets available from:**

Bigstuff, Queensway, Dunstable - 01582 666678  
Vinyl Revelations, Cheapside, Luton - 01582 876391  
(Available to buy 6 weeks before each event)

and online [www.cali-r.com](http://www.cali-r.com) General enquiries 07889786153

# relax



let us  
take care  
of the sale or  
rental of  
your home



Christopher Pallet  
Professional advice since 1973

## Don't just take our word for it ....

"I have let properties through Christopher Pallet for over 10 years. I run the local pub and always refer people seeking to buy or rent to Colin and Linda because of the 1<sup>st</sup> class service I have experienced over the years. Their personal attention and "nothing is too much trouble" attitude makes them number one in my book."

Tom Dunnell

"My family wish to express our very grateful thanks for all your great help and consideration over the years letting and selling our properties"

Moller / Hawkins Family

"Thank you so much, I'll be sorry to lose you, you've restored my faith in Estate Agents. The nicest and most decent I have ever met. \*\*\*\* & \*\*\*\* estate agents need to take a training course from you !!

Fiona Newberry



# Christopher Pallet

Professional advice since 1973

Zoopla  
Smarter property search

rightmove  
the UK's number one property site

Ombudsman  
Services  
Resolving Consumer Disputes

Call Linda or Colin on 01525 222333

# ASPECT

YOUR LOCAL ELECTRICIAN  
TOTTERNHOE  
OVER 20 YEARS EXPERIENCE

# ELECTRICAL

CONSUMER UNIT UPGRADES (FUSE BOARDS)  
LIGHTING - INTERIOR, EXTERIOR & SECURITY  
REWIRING  
NEW INSTALLATIONS  
TESTING & INSPECTION

ALL WORKS TO CURRENT WIRING & BUILDING REGULATIONS  
PART P CERTIFICATED & FULLY INSURED



CALL STEVE ON  
07976 283969 / 01582 665068  
aspect@sparky.me



## Edlesborough Flowers

Flowers, Gifts, Jewellery  
& More...

2 High Street,  
Edlesborough,  
LU6 2HS  
Tel: 01525 221920

## Anne Johnson D.O. Registered Osteopath

6 Moor End,  
Eaton Bray

01525 221958  
07957 250682



## R.J.O'CONNELL BUILDING SERVICES

EXTENSIONS, PATIOS,  
DRIVEWAYS, ROOF REPAIRS  
AND PROFESSIONAL  
DECORATING SERVICE

TEL: 01296 681323  
MOB: 07855 236726

## Will Kimberley Garden Services 01442 255784

Phone for a free no obligation written estimate  
wkgardenservices@btconnect.com

- High hedges a speciality
- Fences erected and repaired
- General garden tidy up's
- In fact any job in the garden!

**EXCEEDING EXPECTATIONS IS JUST PART OF OUR SERVICE**



If you're **selling**, **letting** or **buying** a home, make it happen with your local estate agent



01525 220605 • [info@giblinproperty.co.uk](mailto:info@giblinproperty.co.uk)  
[www.giblinproperty.co.uk](http://www.giblinproperty.co.uk)

# THE WORKTOP SPECIALIST

**DELIVERING OUTSTANDING QUALITY & SERVICE FOR ALL YOUR WORKTOP & JOINERY NEEDS FOR OVER 50 YEARS**

- FREE HOME MEASURING SERVICE
- CUTTING & EDGING SERVICE AVAILABLE
- VISIT OUR BRAND NEW SHOWROOM

Abbey Gate, Boscombe Road,  
Dunstable, Bedfordshire, LU5 4FA

Tel: 01582 668 973 Fax: 01582 608 227  
Email: sales@dunstablelaminates.co.uk  
Web: www.dunstablelaminates.co.uk



@DLaminates



Dunstable Laminates



## Misty Double Glazing?

Over 30 Years experience. FREE Quotes

Over 30 Years experience. FREE Quotes

**KEEP YOUR WINDOW FRAMES...  
... WE JUST REPLACE THE GLASS!**

- UPVC • Aluminium • Or Wood

Because we replace just the glass the repair is a Fraction of the cost of a complete replacement window.

BEFORE



AFTER



**mistydoubleglazing.co.uk**  
**QUALITY GLAZING SERVICES**

**01525 876808**

**WE ALSO REPLACE BROKEN...**

- Glass • Handles • Hinges & Locks
- AND REPAIR...Patio Doors & Conservatories!**



**Café masala**  
*Exquisite Indian Cuisine*

We Cater for Office or Private Parties and don't forget to try our Sunday Buffet

10% Discount on all Takeaway Orders Over £12

Fully Licensed & Air Conditioned

Open Seven Days a Week

Hours: 12 Noon to 2.30pm & 6.00pm to 11.30pm

**Tel: 01525 22 22 64**

63 Bower Lane · Eaton Bray · Dunstable · Beds · LU6 1RB  
email: taraque@hotmail.co.uk · www.cafemasala.com

# alto window cleaning

For a professional service.....

- Window cleaning
- Conservatory cleaning
- Fascia & gutter cleaning

**07876 594186**

## AARON FENCING

ALL TYPES OF DOMESTIC & COMMERCIAL  
FENCING & DECKING WORK UNDERTAKEN

FREE ESTIMATES  
FULLY QUALIFIED & INSURED  
PERSONAL SERVICE AT COMPETITIVE PRICES

**TEL: 01582 665779**  
**MOBILE: 07798 927272**

7 STATION ROAD, DUNSTABLE, LU5 4HS

Buy Direct From Our  
Own Farm

Master Card

VISA

From Ivinghoe Turf

- Commercial & Domestic
- Small Orders Welcome
- Bark, Grass Seed & Fertiliser
- Laying Service
- Discount on Larger Orders
- Screened & Blended Topsoil
- All Year Availability
- Forklift Delivery Available



ROLAWN<sup>®</sup>  
Approved Rolawn  
Stockist

Family firm farming since 1949

**ALL AREAS**

Freephone :

**0800 043 5061**

[www.ivinghoeturf.com](http://www.ivinghoeturf.com)

The Bungalow, Vicarage Farm, Ivinghoe, Leighton Buzzard

Established over 20 Years

## Duncan Tomblin TREE SURGEON

Forestry Contractor • Tree Felling  
Crown Reduction & Thinnings  
Deadwooding • Hedge Cutting  
Stump Grinding • Site Clearance  
Private Agriculture Fencing Contractor  
Chipper & Stump Grinding Hire  
Digger Hire

FULL PUBLIC LIABILITY INSURANCE  
FREE ESTIMATES

'The Best Choice For Your Tree'

**TEL: (01525) 221946**  
**MOBILE: (07802) 410728**

12 Greenways, Eaton Bray, Beds

## ARC Contract Services Ltd

- Painting & Decorating • Plastering
  - Wall & Floor Tiling • Door Hanging
  - Bathroom & Kitchen Installations
- 20 years experience

All work guaranteed and fully insured

Call Adrian : **01582 539179**

Mobile : **07789730580**



## WESTROPE BROS.

LAWN MOWER SERVICES

ALL TYPES OF GARDEN MOWERS SERVICED

THE RYE, EATON BRAY

Tel: Eaton Bray 220587

# Gas Boiler Servicing

Over 40 years experience

Have your boiler serviced by a **Gas Safe**  
and **CORGI** registered engineer

Other services available:

Maintenance, repair and installation of all domestic gas appliances including LPG. Boiler installations, Landlord Safety Certificates and Power flushing.

Free Quotes, no call out fee, and free friendly advice on all of the above.

## Edwards Gas & Heating Services

Eaton Bray



# Tel 01525 220626

[www.edwardsgasandheating.co.uk](http://www.edwardsgasandheating.co.uk)  
[stevethegas@orange.net](mailto:stevethegas@orange.net)



## Vicky

The Dog Grooming Specialist  
[www.vickysdogcare.co.uk](http://www.vickysdogcare.co.uk)



*With a reputation for offering an exceptional personal service*



- Over 29 years of professional experience
- Trained at the London Academy of Professional Groomers to the highest City and Guilds standard
- Dorwest Veterinary Trained
- Member of the Pet Industry Federation
- Sympathetic and gentle handling of all dogs
- **FREE** Health check with every grooming session
- **No cages used! No cage dryers!**
- One to one personal attention.....loads of TLC

### Where Dogs Come First!



Mobile: 07796 445416

Telephone: 01525 222775

Email: [enquiries@vickysdogcare.co.uk](mailto:enquiries@vickysdogcare.co.uk)



*Committed to the highest standards of animal welfare and customer care*



## Desktop Publishing

Magazine, Book, Brochure, Leaflet, Presentation, Advert  
Design & Layout

## PC Support and Guidance

PC Repairs  
Home & Office Network Guidance & Setup

## Digitising

Scanning of Photos & Documents, Slides, Videos, Archiving  
Photo Repairs

## Data Integration & Manipulation

Sharing data between applications  
Automation of applications i.e. Excel Macros  
Databases, Templates, Record Maintenance

**01525 229695 (Edlesborough)**

**Email: [enquiries@morenassociates.co.uk](mailto:enquiries@morenassociates.co.uk)**

**[www.morenassociates.co.uk](http://www.morenassociates.co.uk)**

## Absolutely Plastered

DOMESTIC/COMMERCIAL,  
CLEAN AND RELIABLE SERVICE,  
FREE ESTIMATES, FRIENDLY ADVICE



- \* Plastering & Coving
- \* Floor Screeding
- \* Pebbledashing & Rendering
- \* Dry Lining
- \* Cornices & Mouldings
- \* Insurance Work Undertaken

CALL NICK CONWAY ON

**Mobile: 07751 830716**

**Tel: 01296 688981**

6 Cotes Way, Wing, LU7 0RB

A close-up photograph of a person's foot being examined by a podiatrist's hands.

**HPC Registered**  
Practice in Luton  
Surgery open 6 days  
[www.johnstonstltd.co.uk](http://www.johnstonstltd.co.uk)  
*Ms Johnston*  
PODIATRIST - CHIROPODIST  
For home visits phone  
**07981 749038**

*Stuart Ball*  
**Ceramic Tiler**  
*Specialist*  
*at all aspects of*  
*Wall & Floor Tiling*  
*Over 33 yrs Experience*  
**01525 229381**



## Stephen D. Janes

*(Established in 1982)*

**CARPENTRY, JOINERY  
KITCHENS FITTED  
PROPERTY MAINTENANCE  
TELEPHONE: 01525 220649**

## G & J Groundwork & Landscapes

Driveways & patios  
Free estimates

07949 118011  
01582 477568

Garry Tearle



## Neil Hodson Associates

*BUILDING DESIGN  
STRUCTURAL ENGINEERING*

**PROFESSIONAL BUILDING DESIGN,  
ADVISORY AND DRAWING SERVICES**

From plans for domestic extensions  
to multi-storey offices, commercial  
buildings and factories.

Structural surveys, site surveying,  
advice on building defects and  
Feasibility Studies

Planning Applications and Building  
Regulation Consents obtained.

**24 HIGH ST TRING  
Tel 01442 890894 OR  
Edlesborough 222462**

# J Able bathrooms

## DESIGN

Free CAD design of your bathroom. This will give you a photo realistic finished plan of your design.

## SUPPLY

Come and browse our display suites. This will help you decide on the perfect bathroom for your needs.

## INSTALLATION

Our installations are of the highest standards!  
We take pride in making you delighted with the finished result.

We have suites in a wide range of styles to suite your budget.  
Ring to make an evening appointment at the showroom  
or a home visit at your convenience.

**T: 01525 220043 M: 07891 449077**

3 Summerleys, Edlesborough, Buckinghamshire, LU6 2HR  
W: [www.jablebathrooms.co.uk](http://www.jablebathrooms.co.uk) E: [ableplumbing@hotmail.co.uk](mailto:ableplumbing@hotmail.co.uk)



**EDLESBOROUGH  
TENNIS CLUB**

Website by Jupiterwill

**www.etctennis.org**

Play tennis   Have fun   Socialise   Feel good   Join our club

Join via the website, or call Iona McLean-Hall on 01525 220562 for details

## **Preventing Overuse Sporting Injuries**

**Overuse injuries tend to develop over time and can start as a small niggling ache but progress to more severe pain and problems if left untreated. They are often caused by repetitive use, causing micro-trauma to the tissues.**



Ways to prevent overuse injuries:

1. Pace yourself - don't try to do too much too quickly, build up your intensity, frequency and duration. If doing a running plan, start off by alternating between running and walking. If weight training, vary the muscle groups so you don't work the same group more than once in 24 hours.
2. Vary your activity - make sure you are doing a variety of sports rather than running every day, add in some cycling or swimming.
3. Add flexibility- try supplementing your usual sport with Pilates which will improve your flexibility as well as strengthen your deep stabilising muscles.
4. Remember to stretch - allow yourself time to fully stretch after a workout. You could use a foam roller or spiky ball to help with this.
5. Consider massage - having regular sports or deep tissue massage can help relieve the tension in your muscles so you can stretch more effectively.
6. Get treatment early - make sure you listen to your body and if you get any niggles or pain then see a Physiotherapist for treatment and advice. Don't leave it until it becomes a more serious problem and stops you from doing your usual activity. For further advice ask St Judes Clinic:



**St Judes Clinic  
26 Lake Street  
Leighton Buzzard  
LU7 1RX**

**☎ 01525 377751**

**📧 [www.stjudesclinic.com](http://www.stjudesclinic.com)  
[enquiries@stjudesclinic.com](mailto:enquiries@stjudesclinic.com)**

# ILLUSTRIA

## Kennels & Kathotel

Offering your pet a fully licensed Dog and Cat boarding service.

Purpose built Dog kennels

Individual Cat chalets with outdoor exercise runs

All in pleasant country surroundings

**01582 ~ 665343**



ILLUSTRIA  
Springfield Road  
Wellhead  
NR Dunstable Beds  
LU6 2JT



Proprietors

*Mick, Denise and Michele Garrod*



## Live a healthy & active life

Free 10 minute advice chats with our Chartered Physiotherapists & HCPC Registered Podiatrists

PHYSIOTHERAPY  
PODIATRY &  
CHIROPODY  
PILATES  
ACUPUNCTURE  
SPORTS INJURIES  
MASSAGE  
WOMEN'S HEALTH  
& PREGNANCY  
CARE

**St. Judes**  
physiotherapy, health and well being

01525  
377751   
enquiries@stjudesclinic.com  
www.stjudesclinic.com

## N.D.S.

**General Building & Plumbing**  
(25 years experience)

- Roofing; Installer of UPVC guttering, soffits & fascia boards
- Kitchens & Bathrooms fitted
- Property Maintenance
- Fencing • Patios & Block Paving
- Gazebos • Garden Structures

**Tel: 01525 221470**

**Mobile: 07946 626564**

**FREE ESTIMATES**

...

**ALL WORK CONSIDERED  
NO JOB TOO SMALL**

For a top quality  
decorating job call

# Marc Flack

**01525 223166**

Trading locally for 10 years  
References are available



# TIME TO MOVE?

**Don't be alarmed,  
we're here to help!**

*Established in 1999*

e: [info@plummproperty.co.uk](mailto:info@plummproperty.co.uk)

## Five Good Reasons to use **Plumm Property**

**P**private Offices - direct savings to you on fees

**L**ocal Knowledge - from our highly experienced team

**U**nrestrictive contracts - no lengthy tie-in periods

**M**arketing to outside area - attracting London buyers

**M**anaging all your needs with a 1st class professional service

**From Offer through to Completion of Sale**



01296 660230

[www.plummproperty.co.uk](http://www.plummproperty.co.uk)



## **November Update from the Neighbourhood Plan Steering Group**

Last month we mentioned that we had engaged the services of rCOH, a planning consultancy that has been helping many parishes to produce their Neighbourhood Plans (NP). rCOH are also supporting the Edlesborough NP and will try to achieve a consistent approach between both Plans. New houses in Edlesborough and Eaton Bray have implications on both villages; a good example of this is one shared doctor's surgery.

Some of our Steering Group, together with rCOH, met with Central Bedfordshire Council to discuss and understand the current position of the work CBC have done or are currently working through during development of the Local Plan and the role CBC's Community Plan plays in effecting our NP and the analysis and conclusions they have reached so far in providing us with information that will help us develop our NP.

Earlier in the year, in a **Call For Sites** request, CBC asked landowners if they wished to offer up land as potential development sites. The site assessment criteria CBC will use will be issued by the end of November (this article was written before confirmation that the publication date has been met). Once they have carried out the assessments their conclusions will be made available to us. This will also include a review of the Green Belt around the village for possible "roll back", in other words land that may be taken out of Green Belt classification. We understand that the quantity of new homes that could be required by CBC may be in the region of 150. Therefore, including the AVDC requirement for Edlesborough, the potential number for our two villages may be in the region of 300. In the coming months, the steering group will be working on identifying sites that will accommodate CBC's growth requirement and will be asking the village you for your views on the possible location of new homes in Eaton Bray.

A Neighbourhood Plan is not all about new houses we have not forgotten the environmental and infrastructure implications resulting from development. We are working on a number of topics that will provide useful information in the development of the NP. For example, in December you may have seen some of the team carrying out a traffic survey in the village at rush hour. This information will help identify which direction traffic leaves and comes into the village at peak times helping us minimise traffic disruption.

We will be engaging with the villagers over the coming months to seek views and input. We are currently focussing on having the draft plan ready for the village to review during the first half of 2017.

We hope you found this update useful and in coming months we will provide information of the further work of the Steering Group. If you feel you can offer any support, it doesn't need to be attending monthly meetings, perhaps you have the time to help a sub group in data collection/ research, please contact the Parish Clerk at [www.ebpc.co.uk](http://www.ebpc.co.uk) - **please feel free to attend the next Steering Group meeting.**

## **December update from the Neighbourhood Plan Steering Group**

### **Not just about housing!**

EBPC's Steering Group (made up of Parish Councillors and volunteer residents) are continuing to write the Neighbourhood Plan in order to protect our village from unwanted housing development.

However, a Neighbourhood Plan is not just about housing and is great opportunity for residents to propose positive ideas that can improve our health and wellbeing, for example by identifying new village facilities or improving the quality of any new buildings.

In our Neighbourhood Plan, we could support opportunities that protect and maximise communal green and open spaces that will encourage the children, young people and adult residents of Eaton Bray to be more physically active. This could include looking at new ways to promote healthy lifestyle choices such as planting a community orchard or improving walking and cycle paths and marking routes that we could use on our regular trips through the village on foot, rather than in the car.

Eaton Bray is a village fully surrounded by the open countryside of the Green Belt and with so many historical and environmental assets to enjoy. The Eaton Bray Neighbourhood Plan will help protect these.

We hope you found this update useful and in coming months we will provide information of the further work of the Steering Group. If you feel you can offer any support please come along to our meetings. However support doesn't need to be attending monthly meetings, perhaps you have the time to help with data collection/research.

Contact the Parish Clerk at [www.ebpc.co.uk](http://www.ebpc.co.uk) - **please feel free to attend the next Steering Group meeting.**



Heidi Head, Parish Clerk & RFO

Email: [clerk@ebpc.co.uk](mailto:clerk@ebpc.co.uk) - Telephone/Fax: 01525 221464 - Website: [www.ebpc.co.uk](http://www.ebpc.co.uk)

Office Hours: Tuesday/Thursday/Friday 09:30-13:30hrs [messages can be left on answerphone]

Follow Eaton Bray Parish Council on Facebook and Twitter

Keep up to date with what is going on in the parish



The run-up to Christmas was quite a busy time for us. We continued to provide our core services as normal; transport, small household jobs, and befriending and there were a number of gatherings, especially with the volunteers who act as befrienders and who now meet on a regular basis.

In addition to these, one or two special events took place. We had a stall at St Mary's Christmas Fair with a Treasure Island activity for the younger visitors. We were very encouraged by the support and enthusiasm expressed by many of our fellow villagers who stopped off at the stall. A couple of the committee members attended a safe-guarding awareness course run by Voluntary and Community Action in Leighton Buzzard, alongside representatives from Caddington Good Neighbours scheme, a group with a much longer history than ourselves. It was a valuable and interesting exercise.

In the afternoon of 5th December we held a Christmas Tea at the Salvation Army in Booth Place, attended in good numbers by both volunteers and clients, who relished the opportunity to meet each other and chat at leisure. Those of us who are relatively new to the village found it fascinating to learn more about Eaton Bray from people who have lived and worked here for many decades and whose families, in some cases, have had a presence for several generations. Many thanks to all those who put time and energy into the event and provided such delicious food!



**Some comments from our December 2015 Ofsted report:**

Children learn good manners and know how to treat each other with respect.

Staff are consistently kind and caring and this supports children to develop confidence and resilience.

Teaching is consistently good and children's safety is given the highest priority.

We are a committee run playgroup operating five mornings a week 9:15 – 12:15 for children aged 2 to school age.

**If you would like to find out if your child would be happy here, please phone our Playgroup Leader, Ann Tobin on 07816 358 342.**

[www.dagnallunderfives.co.uk](http://www.dagnallunderfives.co.uk)

# Come for Coffee at St Mary's

For a warm welcome and  
a cheering cuppa  
each month in  
St Mary's Church  
Eaton Bray  
10.30am - midday

**Next Coffee Mornings:**  
Saturday 4<sup>th</sup> February  
Saturday 4<sup>th</sup> March





# Looking to visit Canada...

For help with creating the best itinerary for you please call or email us

- Canada specialist since 2001
- Friendly, honest advice from an independent travel agency
- Specialists in tailor-making holidays to destinations worldwide
- Extensive experience to arrange every detail
- Using fully bonded tour operators
- No booking fees



## Travel Impressions

**01442 890265**

[enquiries@travelimpressions.co.uk](mailto:enquiries@travelimpressions.co.uk)  
[www.travelimpressions.co.uk](http://www.travelimpressions.co.uk)

Suite 4, George House, 64 High Street, Tring, Herts. HP23 4AF

## ADRIENNE'S PRIVATE HIRE

Call for a **FREE** quotation  
*Book early to avoid disappointment*  
*Very competitive prices*

Airport Transfers  
& Private Hire

**07980 039715**

*Our executive Cars, 6 seater Minibuses and lady driver are all available*



## GRASS ROOTS GARDEN MAINTENANCE

TREE SURGERY, HEDGE PRUNING,  
SELECTION SUPPLY AND PLANTING OF  
TREES, SHRUBS AND HEDGES.  
REGULAR MAINTENANCE/ONE-OFF JOBS  
(Fully Insured)

**Brian McMahon NCH (Arb)**  
**01525 221960**

## CHARLES HILL

GARDEN SERVICES LTD

DESIGN | BUILD | MAINTAIN

LANDSCAPE CONTRACTORS

NCH Horticulture  
City & Guilds Garden Design

A professional company working  
with all your garden requirements  
from design to complete landscape.

**01525 242065**

**07773723236**

[www.charleshillgardenservices.co.uk](http://www.charleshillgardenservices.co.uk)  
[www.allyearroundbbq.co.uk](http://www.allyearroundbbq.co.uk)



St Mary's Eaton Bray

# Spring Sale

Saturday 29 April 2017

12 noon - 3pm

Eaton Bray Village Hall

Church Lane, Eaton Bray, LU6 2DJ

Book a table for just £10 - crafts or bric-a-brac.

Cakes, books, raffle and delicious lunchtime refreshments available, including our legendary bacon butties!



**FREE ADMISSION**



Contact Barbara Morton on 01525 852368 or email at [barbara.morton1@gmail.com](mailto:barbara.morton1@gmail.com) for more information

# OPEN GARDENS FESTIVAL 23 July 2017 Wanted - Gardens

In Eaton Bray, Edlesborough or Northall

Would you be willing to open your garden for the day to help raise money for charity?

If so, or you would like more information, please contact Kay Griffiths on 222849 or Gordon Gray on 220136.



**NORTHALL & DISTRICT  
AGE CONCERN**



**WEDNESDAY CLUB**  
CHARITY No 293080

?

**QUIZ**

?

?

?

**NIGHT**

**FRIDAY 10th MARCH 7:30pm**  
**NORTHALL VILLAGE HALL**  
**2 COURSE HOT SUPPER**

?

**(Bring your own drink)**

?

**TICKETS £9**

**from Beryl Bishop 01525 220868**



# Eaton Bray Lawn Tennis Club

THE FIRST 30 YEARS 1987 – 2017 REMEMBERED

Initially the idea of some forward thinking ladies in 1986, the inaugural meeting to form the Eaton Bray Tennis Club was held in the Coffee Tavern on 13th January 1987.

In March the following year the Chairman's report indicated that 60 households were members of the Tennis Club and affiliation to the Lawn Tennis Association had been requested. To raise the necessary finance a 100 Club had been started and with fund raising, grants, loans & subscriptions, a sufficient level of income was in place to commence the construction of the courts.

In the third week of August 1988 the first ball was hit over the new nets.

On August Bank Holiday 1989 the first ever Club Championships took place. In 2016 we held our 28th Finals. Our participation in the South Bedfordshire Tennis Leagues, which progressed from the entry of a couple of men's teams in the Bedfordshire league in the 1990ies, has continued to the present time.

In 1998 with the aid of a 26.3K Lottery Grant we managed to organise the building of a Clubhouse & in 2001 having received planning permission from South Bedfordshire District Council for the erection of floodlights, we set



*MP Andrew Selous tries his (back) hand during the official opening of our resurfaced courts in 2007*

about the daunting task of raising the necessary finance for floodlights to 2 of the courts & for the cleaning & re-painting of all 3 courts.

On Friday 21st March 2003 the floodlights were "christened" just ahead of the advancement of the clocks & with the courts cleaned & painted the expenditure totalled 23K. In this instance we were unable to obtain assistance from the Lottery and the work was predominantly self-financed but we received valued support & financial help from the Eaton Bray Parish Council

In the first complete season following the introduction of floodlights Eaton Bray Men's A Team were First Division Champions in the South Bedfordshire League which was a great achievement considering the size of other clubs in the Luton & Dunstable area. The Ladies team also ended as champions of Division 2.

In 2006 the structure of the courts was disintegrating and major sub strata & re-surfacing work was necessary. Again the ingenuity & dedication of members helped raise the 31K needed to ensure the continued existence of the Club. Every avenue of grant awards was explored and some members



*"Crowds" gather in front of the Clubhouse to enjoy the Men's Singles final in The 2010 club championship*

parted with 5 years of advance subscriptions to meet the expenditure target.

The following year the 3rd court was resurfaced at a cost of 17K

The constant level of expenditure is a clear indication of the ongoing need for continuous income year after year.

Now, 30 years on from the start, new members have come & old members have moved away and unfortunately some members have gone to show the Gods what a real topspin forehand looks like when hit on heavenly turf. Through all of the changes a small number of people, who were either at that Coffee Tavern meeting in 1987 or joined in the following couple of years, remain involved with Eaton Bray Tennis Club. This band has been augmented by new members who have also contributed to the continuing success of the Club - an indication that a solid base giving stability and continuity is required along with the regular transfusion of new blood to keep the Tennis Club as a valuable asset to its members and to the community.

The performance of the senior teams in recent years has failed to match some of the heady heights of the past but that disappointment has been countered by the emergence of some



*The new Court One – now we just need a roof!*

excellent junior teams following an efficiently organised coaching programme.

The Club is financially sound but proposed future improvements / changes to the court surface will seriously deplete funds. Once negotiations to extend the lease with the Parish Council have been completed we will require all of the expertise gained over previous years to move forward to ensure the continuation of the valued facility that we all know as “Our Club” Eaton Bray can be justifiably proud of its Tennis Club as the Club is proud to be in Eaton Bray. May it continue for another 30 years.



**Berkhamsted Swimming Club** has a long history of developing successful swimmers at local, county, regional and national levels. This is achieved by developing the swimmer from an all-round perspective, providing them with focus, direction, commitment, and support in addition to important life skills.

New members are welcome to join our caring and friendly family club, which has swimmers aged 8 years up to Masters Level as well as an active parent/coach committee and volunteer structure.

Contact **Geoff Wood**, Head Coach at [headcoach@berkosc.org.uk](mailto:headcoach@berkosc.org.uk) if you would like your child(ren) to attend a swimming club trial.

**[www.berkosc.org.uk](http://www.berkosc.org.uk)**



## Eaton Bray Methodist Church

At the beginning of December, on the second Sunday in Advent, Colin Quine led our service, with texts from Isaiah and Matthew's Gospel, pointing to the necessity of a warm and personal faith which can change lives and lead to peace and joy. Our Cafe Service on the third Sunday in Advent was in the capable hands of our new minister, Rev Nigel Bibbings and in the lively discussions we shared our thoughts on the blessings in our lives, recognising that our response to God should be unconditional, as was Mary's. Our Carol Service, on the fourth Sunday in Advent was a sheer delight, produced with enthusiasm and vitality by our Sunday School. The

large congregation was treated to a presentation of 'The Nativity Game', an interesting narration of the Christmas story. Our thanks and congratulations go to the children and their teachers for an original and thought-provoking service. The month culminated in a joyful and uplifting service on Christmas Day, when Fiona Arscott-Smith made a welcome return to our pulpit. A full church was led in celebration of 'Operation Good News' bringing light and hope to mankind.

**Date for your Diary:**

**Cafe Community**

**Saturday 11th February 11am – 1pm**

We will be delighted to see you if you come to join us for a cup of tea/coffee and/or a light lunch

### I'M SURE SOME WILL RELATE TO THIS

*I remember the cheese of my childhood,  
And the bread that we cut with a knife,  
When the children helped with the housework,  
And the men went to work not the wife.  
The cheese never needed a fridge,  
And the bread was so crusty and hot  
The children were seldom unhappy  
And the wife was content with her lot.  
I remember the milk from the bottle,  
With the yummy cream on the top,  
Our dinner came hot from the oven,  
And not from the fridge; in the shop.  
The kids were a lot more contented,  
They didn't need money for kicks,  
Just a game with their mates in the road,  
And sometimes the Saturday flicks.  
I remember the shop on the corner,  
Where a pen'orth of sweets was sold  
Do you think I'm a bit too nostalgic?  
Or is it...I'm just getting old?*

# Shape up in the New Year with Clinical Pilates

## What is Pilates?

Pilates considers the body as a whole using a series of flowing movements designed to strengthen and stretch the muscles of the body. It teaches and restores correct posture and movement of the body which is often out of balance due to our modern life styles and habits. Anybody can do Pilates regardless of age, fitness level or gender.

## What is Clinical Pilates?

Clinical Pilates is a gentle form of exercise. It is run in small classes to enable the client and physiotherapist to work together to ensure that the exercises are being completed correctly and so that if required the exercises can be adapted on a one to one basis. It is a series of mat based exercises in various different body positions which have been adapted by physiotherapists to make them more suitable for patients with back and neck pain, joint conditions and those recovering from injury, as well as healthy individuals who would prefer to exercise under the watchful eye of a medical professional.

## Who teaches these classes?

Clinical Pilates instructors are Chartered Physiotherapists, who combine their Physiotherapy and Pilates knowledge together to give you safe, effective exercises, designed to match your level of ability. They are qualified via The Australian Physiotherapy and Pilates Institute ([www.appihealthgroup.com](http://www.appihealthgroup.com)) and are regularly required to update their skills.

## Suffering from Back Pain?

80 to 90% of us will suffer from back pain at some point and 60 to 80% of us will have a recurrence of this pain within a year of the initial problem. By retraining the deep abdominal and spinal muscles, Clinical Pilates can help to prevent the recurrence of back pain in combination with correct

back care and advice. Working our core; the 'natural corset' muscles surrounding our spine, has been shown through research to give effective results in mid and long term back pain sufferers. (Van Dillen 2003)

## What are the Overall Benefits?

- Improves posture and relieves back pain
- Aids sleep and reduces stress
- Flattens stomachs and tones muscles
- Improves mobility, balance and co-ordination
- Adaptable to all ages, shapes and fitness levels

For details of local Clinical Pilates classes contact St Judes Clinic.



**St Judes Clinic**  
**26 Lake Street**  
**Leighton Buzzard**  
**LU7 1RX**

**☎ 01525 377751**

**📧 [www.stjudesclinic.com](http://www.stjudesclinic.com)**  
**[enquiries@stjudesclinic.com](mailto:enquiries@stjudesclinic.com)**

## London Luton Airport

With an increase in aircraft in the area and in particular when the wind is from the East, we are getting some aircraft flying directly over the village to join the flight path into the airport. If you are disturbed by the traffic flying over the village, there is a complaints hotline number: 01582395382. This is an airport number where you can register your concerns. It is important to do this if we are to reduce these disturbances over our village.

If you need to complain about Heathrow flight noise the number is 0800 344 844. Email: [noise\\_complaints@heathrow.com](mailto:noise_complaints@heathrow.com)



# Counting Hundreds and Thousands

**ZSL Whipsnade Zoo begins counting its animals for the annual stocktake**

Thousands of animals stood up to be counted in January at ZSL Whipsnade Zoo as zookeepers kicked off one of their biggest tasks of the year – the 2017 annual stocktake.

Home to more than 3,000 animals, including over 200 different species, keepers at the UK's largest zoo made a headcount of each and every invertebrate,



several hundred butterflies and moths in the Zoo's tropical Butterfly House, while Shane Belson took stock of the nine-strong Asian elephant herd – including seven-month-old Elizabeth – ahead of their move into a brand-new Centre for Elephant Care in April.

The compulsory count is required as part of ZSL Whipsnade Zoo's license and all of the information is logged into a worldwide zoological database called Species360, which is used to manage the international breeding programmes for endangered animals.

ZSL Whipsnade Zoo, part of international conservation charity The Zoological Society of London (ZSL), is open to visitors all year round, and with more than 3,300 animals to see, it's a fantastic day out for the whole family. To book or for more information, see [www.zsl.org](http://www.zsl.org).



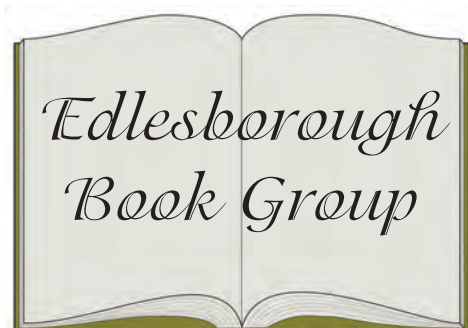
bird, fish, mammal, reptile and amphibian. In 2016, ZSL Whipsnade Zoo welcomed many new arrivals including Elizabeth, a baby Asian elephant and a female giraffe calf named Nuru. A clutch of West African dwarf crocodiles also hatched, while a female gaur – the world's largest cow – and a red panda cub arrived too. Each newborn will be added to this year's census.

Every resident at the UK's largest zoo must be accounted for; presenting a mammoth challenge for the keepers and one that took approximately a week to complete.

Invertebrate keeper Thomas Maunders was tasked with counting each of the







### **Cakes and Ale**

**by W. Somerset Maugham**

This book was written in 1930 and is a satire based on the literary circles in England at that time, circles of which Maugham himself must have been very familiar. He shows his disdain for them in this book, the characters he has created seeming to be thinly veiled portraits of contemporary men of letters.

The story tells of famous author, Edward Driffield who has just passed away and his widow, anxious to preserve his name for posterity, has decided to publish his biography. To help her, she has asked a popular author and celebrity, Alroy Kear to write it. As a much younger man than the deceased, and knowing that he has not enough knowledge of the great man, he in turn appeals to a friend who he knows was close to Driffield in the past. The friend he turns to is the author William Ashenden, also a novelist who is the narrator of Cakes and Ale.

Ashenden is very surprised when Alroy Kear calls him out of the blue and invites him to lunch and immediately suspects an ulterior motive. He was close to Edward Driffield and his first wife Rosie from boyhood and knows a great deal of their history. His dilemma is, how much of their lives will he reveal to Kear and Amy Driffield, knowing that whatever he does tell them will be controlled by the widow wanting to lionise her husband and sanitise his life. The reader is privy to Ashenden's thoughts and gradually Driffield and Rosie's story is revealed to us. Rosie, an ex barmaid who Driffield married in spite of family disapproval is the most likeable person in the book. She is a vivid character who grabs attention and stays in the mind. Juxtaposed against the hypocritical people that she meets and the literary circles of London that Maugham paints through the eyes of William Ashenden, she shows us the attention seeking hypocrisy of those times.

Our book group found lots to discuss from the novel, but we thought that we had read it too close to Angel Pavement. Although both were different in style some of our group would have preferred a bigger gap between the two books. Overall though, most of the group enjoyed it.



## **All Saints' Church, Dagnall**

### **Services in February 2017**

Sun. 5th Feb.	9.00 am	Eucharist
	10.30 am	Morning Service
Sun. 12th Feb.	10.30 am	Morning Service
Sun. 19th Feb.	10.30 am	Family Communion
Sun. 26th Feb.	10.30 am	Family Service
Sun 5th Mar.	9.00 am	Eucharist
	10.30 am	Morning Service



Sunday School meets each Sunday at 10.30 am except when there is a Family Service.

# THE FILLING STATION

A relaxed, informal way of expressing the Christian faith. Using mid-week monthly meetings the Filling Station has a particular focus on rural communities and we find that the local church is strengthened and helped in many ways. We provide refreshments, authentic worship from guest worship leaders, keynote speakers and a relaxed social atmosphere. Everyone is welcome. Do come and bring your friends.

*4th Tuesday of each month at 7.30 p.m.*

*Bellows Mill, Eaton Bray, Dunstable, Beds. LU6 1QZ*

## **Speakers:**

**28th February:** Jan Ransom, Flame International, sending teams to places of conflict. "Healing through Forgiveness"

**28th March:** Carolyn Bramhall, Heart for Truth. Helping equip the church to restore the emotionally wounded.

**25th April:** Ian McCormack, who was stung by lethal jelly fish and woke up in a hospital morgue. An atheist, his experiences at this time led him to become a Christian

*Local contact: Diane 07815 895501*

*To find out more visit [www.thefillingstation.org.uk](http://www.thefillingstation.org.uk)*



**THE  
FILLING  
STATION**

## *Local Houses of Prayer*

**Local House of Prayer training and information day with Anne de Leyser**

**Date: 18th March 2017 10a.m. – 3.30 p.m.**

**Stanbridge and Tilsworth Community Hall, Stanbridge Road, Tilsworth,  
Leighton Buzzard, Beds. LU7 9PN**

3 Counties Filling Station is holding a Local House of Prayer training day in partnership with Ffald-y-Brenin on 18th March. The purpose of these training days is to explore together some of the key principles of a Local House of Prayer, enabling you to start a Local House of Prayer in your area/ community should you so wish. However there is no obligation to start a Local House of Prayer as a result of attending this event and everyone is welcome, whether you are interested in finding out about Local Houses of Prayer or just wanting to bless and pray for your community. A great opportunity to learn more about a global phenomenon that God seems to love.

Local Houses of Prayer (LHOP's) are an initiative flowing out from the move of God at Ffald-y--Brenin. The vision of a House of Prayer is 'To see the Kingdom come and God's will be done on this particular area of earth, as in heaven'. Typically commencing with 2-3 people they adopt a small local area for Jesus, worship and pray for the breaking in of the Kingdom of God, playing their part in its release through their life and witness.

Cost of the day: £5 if you bring your own lunch or we can provide a sandwich lunch for an additional £3

Tea and coffee provided all day.

Please order when booking. Pay at the door.

To book your place or for further information contact:

Diane Makin tel. 07815 895501 Email: [dianelmakin@aol.com](mailto:dianelmakin@aol.com)

Philip and Jane Steer: Email: [jmsteer.jms@gmail.com](mailto:jmsteer.jms@gmail.com)



Make your house a home with  
blinds and awnings from

**VANSAR  
BLINDS** 

[www.vansarblinds.co.uk](http://www.vansarblinds.co.uk)

Find us on Facebook



- Free No Obligation Measuring And Quotations
- All Blinds Made To Measure
- Choose In The Comfort Of Your Own Home Or Workplace
- Family Run Business
- Large Range Of Quality, Affordable Fabrics And Colours To Choose From

01525 220477 or 01582 699565 [sales@vansarblinds.co.uk](mailto:sales@vansarblinds.co.uk)



**David Brown  
Window Cleaning**

Quality Reliable Service.

Regular, Occasional or  
Single Visits.

Friendly Free Estimates.

Facias, Guttering & Conservatories.  
External Cleaning & Maintenance.

Fully Insured.

**Phone 01582 472113**  
**Mobile 07534 837073**

**McTimoney  
CHIROPRACTIC**



**Margie Craib** BSc BHSI DC AMC MMCA  
Human and Animal Treatments

Ashridge Farm, Ringshall, Berkhamsted, Herts HP4 1ND  
Telephone: (01442) 842729

General Chiropractic Council Registration No. 293

**Spinney Landscapes**  
& Gardening Services

*All Aspects of Grounds Maintenance*

Weed Control • Driveways & Patios

Lawn Care & Scarifying • Fencing

Turfing • Tree Work

Snow Cleaning & Gritting

**Tel: 01525 839622 Mob: 07876 500292**

**Email: [spinneylandscapes@gmail.com](mailto:spinneylandscapes@gmail.com)**

**[www.spinneylandscapes.com](http://www.spinneylandscapes.com)**



Dagnall Church of England School

Courage  
Friendship  
Respect

Love Values  
Koinonia  
Responsibility

**Dagnall School** is a friendly, nurturing and fully-inclusive learning community, situated at the foot of the Chiltern Hills. We offer a unique, family feel where children benefit from small class sizes and personalised learning delivered by highly-skilled teachers.

We provide a secure and creative environment where children feel safe to take risks, to challenge themselves and to develop their love of learning as individuals.



# Curiosity Creativity Community

Spaces available, to arrange a viewing please call Dagnall school:

01442 842473

or visit: [www.dagnall.bucks.sch.uk](http://www.dagnall.bucks.sch.uk)

email: [office@dagnall.bucks.sch.uk](mailto:office@dagnall.bucks.sch.uk)





**GENERALMECHANICALSERVICESLTD**  
 VEHICLE SERVICING AND REPAIRS



**MOTs • MOT REPAIRS • SERVICING  
 DIAGNOSTICS • TRACKING • AIR CONDITIONING  
 TYRES • CAMBELTS • COLLECTION & DELIVERY  
 WELDING & FABRICATION • BATTERIES**

**All vehicles - all mechanical work!**

**1 HONEYWICK LANE, EATON BRAY, LU6 2BJ**  
 reception@general-mechanical-services.co.uk  
 www.general-mechanical-services.co.uk



**01525 222876**



Centre of valid for motorists



# Protecting what's important

## MJ Security Systems Ltd

### MJ Security Systems

Contact Us For More Information

Unit 4, Arianne Business Centre,  
Blackburn Road,  
Townsend Industrial Estate,  
Houghton Regis,  
Bedfordshire,  
LU5 5DZ

Please call for a free quotation

**T: 0800 0856126**

**E: [info@mjsecurity.co.uk](mailto:info@mjsecurity.co.uk)**

**W: [www.mjsecurity.co.uk](http://www.mjsecurity.co.uk)**



We also specialise in:

- IP Cameras
- Intruder Alarms
- Access Control
- CCTV & Monitoring
- Door Entry
- Covert Cameras
- Security Lighting



FROM ONLY  
£439.95+VAT  
Products and  
Installation



**Kit includes:**

1 x Wireless Door Contact, 2 x Wireless  
P.I.R., 1 x Wireless Sounder, 2 x Remote Set  
and Unset Fobs.

**Stylish • Wireless • Secure**

## M . P . S

Maintenance & Property Services

- KITCHENS AND BATHROOMS
- PAINTING AND DECORATING
- PROPERTY RENOVATIONS
- PLASTERBOARDING
- FENCING

FREE ESTIMATES

NO CALL OUT CHARGE

NO JOB TO SMALL

LOCAL

Contact:- Julian

**07958 306301**

E-mail – [mps@mustoe.co.uk](mailto:mps@mustoe.co.uk)

[www.mustoe.co.uk](http://www.mustoe.co.uk)

# Leighton Aerials

Established 1970

For all your aerial  
and satellite needs  
call Colin on

**01525 374742**



# Edlesborough School & Pre-School



*Pupils' behaviour is outstanding...*

*The environment for learning is exciting and stimulating...*

*A real strength of the school is pupils' attitude to their learning .*

*Ofsted 2013*

For more information about our School, Pre-School and Before and After School facilities, visit our website at [www.edlesborough.bucks.sch.uk](http://www.edlesborough.bucks.sch.uk)

Please contact the school on 01525 220431 to arrange a visit.

# S M Reilly & Son Ltd

General Builders & Contractors



Turning Your House into  
a Home Since 1987

All aspects of the building trade undertaken

- \*Extensions\*Hard Landscaping\*
- \*Windows, Doors & Conservatories\*
- \*Fitting of Aluminium Bi-fold Doors\*
- \*Kitchen & Bathrooms\*Drives\*
- \*Loft Conversions\*

01525 221740 07970 637511



**JAMES FALCON-CROSS**

## LANDSCAPING AND OUTDOOR LIVING DESIGN

ALL ASPECTS OF LANDSCAPING  
UNDERTAKEN INCLUDING  
FENCING, TURFING AND PATIOS  
TIMBER STRUCTURES  
DESIGNED AND BUILT

VEGETABLE AND HERB GARDENS

01442 843258 / 07769 901325

ONECROSSFALCON@GMAIL.COM

# eww

E W Wallace & Co  
Chartered Accountants  
Tax Consultants  
Business Advisors

Small business specialists serving  
Beds, Bucks & Herts

- Annual accounts
- Tax returns
- Self-employed
- Limited companies
- Small business specialist
- Sage Accounts expertise
- Prompt, personal service
- Value-for-money fees
- Free initial consultation

01525 220826

[www.ewwallace.co.uk](http://www.ewwallace.co.uk)



Parties Wedding Receptions Stage Productions

Fitness Classes Business Meetings Beer Festivals

Film Shows Club Meetings Keep Fit Quiz Nights

# Eaton Bray Village Hall

Capacity for 220 People Parking for 70 Cars Meeting Room Countryside Views

Bar Facilities Kitchen Facilities Full AV Facilities Baby Changing Wheelchair Access



For bookings or enquiries call: 07975 797 202

email: [bookings@ebvh.co.uk](mailto:bookings@ebvh.co.uk)

[www.ebvh.co.uk](http://www.ebvh.co.uk)





# WAGGING

wonderful dog grooming

Here to take care of your mucky pup!

Your local dog grooming service in Eaton Bray

1-2-1 care for your dog

NO cages!

**07580 343396**

[www.waggingwonderful.co.uk](http://www.waggingwonderful.co.uk)

[info@waggingwonderful.co.uk](mailto:info@waggingwonderful.co.uk)

## James B Chadburn FBHI

Fine Antique clocks & Barometers

Specialist in repairs & restorations.

Valuations & clock finding service.

Advice & assistance on formation & disposal of private clock collections.

Quality clocks/barometers Bought & sold.



Telephone 01525 221165

Mobile 07790 000629

E-mail: [info@jameschadburn.com](mailto:info@jameschadburn.com)

# NG AUTOS



MAKING YOU AND YOUR CAR HAPPY

CAM BELTS • MOT'S • MOT REPAIRS • HEAD GASKETS  
AIR CONDITIONING • RECOVERY/BREAKDOWN  
DIAGNOSTICS SERVICING • BRAKES • SUSPENSION  
CLUTCHES • GEARBOXES • TYRES • WHEEL BALANCING  
WHEEL ALIGNMENT COLLECTION & DELIVERY

**CALL NICK OR GARY**

**01525 220850 OR 07972 198615**

**SPARROW HALL FARM, LEIGHTON ROAD,  
EDLESBOROUGH LU6 2ES**



Reception



Service Bays



MOT Station

**CHIROPODY HOME VISITING  
PRACTICE**

**Julia Reading, BSc(Hons)**

17 years experience

- \* Corns \* Hard skin \* Verrucae
- \* Thickened/Ingrowing nails
- \* Nail cutting \* Diabetic feet

Please telephone: 0774 647 2781  
for more information or to make

an appointment

The COLLEGE  
of PODIATRY

hpcp  
registered  
www.hpcp-uk.org



**The  
Gentleman  
Gardener**

Let your local RHS qualified  
gardener make your garden  
beautiful, from simple  
garden maintenance to total  
redesign of your garden.

Please call Barry on  
**01525-222451 or  
07541196384**

to pop round for a free chat.

**CHIMNEY SWEEP**

Local & Est. Brush n Vac  
Friendly, Clean and Efficient

Call **KEVIN HING** on

Tel: 01525 371592

Mob: 07940 528897

[www.khing.co.uk](http://www.khing.co.uk)

Member of NACS

**D.A. Windows Doors  
& Conservatories**

23 Church Lane, Eaton Bray, LU6 2DJ

Tel: 01525 221051 Mobile: 07807 798387

email: [mimcavinder@hotmail.com](mailto:mimcavinder@hotmail.com)

**AUTHORISED SWISH INSTALLER  
WITH OVER 20 YEARS EXPERIENCE**

Installation of PVCu windows, doors and conservatories  
Replacement glass units and window maintenance

**QUALITY PRODUCTS - QUALITY WORKMANSHIP -  
REASONABLE PRICES**

Government  
Approved  
CERTASS  
Contractor

General building  
maintenance work also  
undertaken including:  
Fascias and Soffits Gutters  
Fencing

Accredited Member  
of the Incorporation  
of Plastic Window  
Fabricators and Installers  
Limited

# LOCAL HERALDRY BY JOHN HOCKEY

In this series, we take a look around local villages to find interesting and unusual heraldry.

## THE WEST FAMILY OF MARSWORTH



*Marsworth Church*

In the lovely church of All Saints, Marsworth (usually open) there are some interesting ledger slabs on the floor of the south chapel. They are to members of the West family, who held part of the manor in the 16th century. In heraldry, the pictorial representations that adorn shields are called *charges* and they may be inanimate such as the wheat sheaf in the arms of Kempe (incidentally, there is a Kempe ‘signature’ containing a tower and wheat sheaf in a stained glass

window in Marsworth church) or animate as in the arms of Bray, which we looked at last time. In the West’s case they are a relatively rare find, a leopard’s head thrust through with a fleur de lis. This strange design is known as *jessant de lis*, the word *jessant* coming from an old French term meaning ‘to spring forth’.

The blazon or description of the arms for the West family are as follows:

*Argent on a fess dancetty Sable, three leopard’s heads jessant de lis Or.*



*WEST Arms*

In other words, on a silver background (Argent, usually shown white) there is a black (Sable) toothed (*dancetty*) horizontal bar (*fess*), charged with three golden (Or) leopard’s heads thrust through with a fleur de lis (*jessant de lis*). It must have made a striking shield in battle with the strongly contrasting colours and the sight of the poor leopard being speared as you got up close and personal. Not all instances of this unusual heraldic charge

are to be found on shields of those who fought, for the arms of the Bishop of Hereford also contain three leopard’s heads *jessant de lis*, though in this case the beasts heads are turned upside down so



*Wheat sheaf and Tower*

the fleur de lis goes in the top of the head and out of the mouth!

In gentler times, the West family passed the portion of the manor they owned by various marriages to the Gore family of Tring Park in 1720 and thereafter to Baron Lionel Nathan de Rothschild in 1872.

Next month the Egerton family of Ashridge.



*WEST Brass*

# A Curry Feast

I love a good curry almost more than anything else! And yet when it comes to cooking one myself, it can be hit or miss, lacking the flavour and depth or the kind of meal you would enjoy as a takeaway. Sima Milligan runs Indian cookery courses for beginners at Khana Cooking in Hemel Hempstead and she served up this wonderful treat on my programme. The chicken recipe has been passed down from her grandma and is ridiculously easy to make. The resulting thick, aromatic gravy is just delicious. For vegetarians, the equally simple potato curry is bursting with the flavour of the mustard seeds. A true takeaway treat, to be served with fluffy rice and flatbreads.

## **Punjabi Chicken Curry (serves 4)**

### **Ingredients**

8 skinned chicken thighs (bone in)  
4 tbsp sunflower oil  
2 medium onions, finely chopped  
2 heaped tsp of a mix of chopped garlic, ginger and chilli  
1 heaped tsp Garam Masala  
1 heaped tsp coriander  
1/2 tsp turmeric  
2 broken cinnamon sticks  
6 cardamom pods  
5 cloves  
1/2 tsp chilli powder  
6 whole black pepper corns  
1/2 teaspoon salt  
500g Passata  
2 tbsp freshly chopped coriander

### **Method**

Heat the oil in a pan until it is very hot. Add the chopped onions and cook them until they are caramelised and very dark brown. Chuck in the garlic, ginger and chilli mix and cook for 5 minutes.

Next mix in the remaining spices and the salt and cook for 2-3 minutes, adding a little water if it looks dry. This paste can be stored in the fridge and used as a marinade for fish and meat.

Pour in the passata and cook on a high heat for 5 minutes.

Once the sauce has thickened,

pop in the chicken thighs and cook with the lid on for 15 minutes. Take the lid off and stir and then continue to cook on a low heat until the curry looks thick and the thighs are tender and cooked through. This will be around 45 minutes.

Serve garnished with the freshly chopped coriander.

## **Bombay Aloo (serves 4)**

### **Ingredients**

2 large potatoes, peeled and chopped in to 2cm squares  
1 cup of frozen peas  
1/2 tin chopped tomatoes  
2 tbsp sunflower oil  
1 tsp black mustard seeds  
1/2 tsp turmeric  
5 curry leaves  
1/2 tsp crushed garlic  
3/4 tsp salt  
1/2 tsp red chilli powder  
1/2 cup water

### **Method**

Heat the oil in a non stick saucepan. Once the oil is hot, add the mustard seeds and cook until they start popping, then add the curry leaves. Turn the heat down and add the turmeric, salt, garlic and chilli powder. Cook for 2-3 minutes, then pour in the tinned tomatoes. Cook the sauce on a medium heat for a few minutes until it has thickened.

Add the potatoes and water and stir. Cover the pan and cook on a medium heat until the potatoes become soft, around 30 minutes or so. Remove the lid for the last few minutes, chuck in the peas and let the curry thicken. If it gets too thick, add some water. Serve with the chicken curry.



# Slow Cooked Pork Shoulder

One of the 'trends' I am noticing with restaurants is towards really small sites opening up. These places, which can take a maximum of 20 people, are more intimate for customers and are much less unwieldy for owners and chefs to run. They require less staff and often feel more like eating in someone's front room, rather than in a restaurant. I think one of the forerunners of this kind of restaurant was 'Marianne' in London, which was opened by Masterchef The Professionals runner-up Marianne Lumb three years ago. Within my patch of Beds, Herts and Bucks, Crockers in Potten End recently opened its doors. Run by a lovely chef called Luke Garnsworthy, he only has 10 seats around his fine-dining chef's table. But Luke also loves the kind of simple recipes he makes on my Weekend Kitchen programme, like this foolproof slow-cooker pork shoulder dish. Meltingly tender, full of flavour and so easy to make, this is great home cooking. If you don't have a slow cooker, just cook this gently on the hob for 2-3 hours, topping up the liquid as you go...

To serve 4 people

## Ingredients

- 4 good-sized pork shoulder steaks
- 4 carrots
- 2 parsnips
- 1 courgette
- 200g pearl barley
- 2 tbsp mixed fresh herbs (tarragon works especially well here), plus extra to garnish
- One small butternut squash
- 250ml cider
- Chicken stock

## Method

Set the slow cooker to low. Chop all the vegetables into big chunks and fry them in batches in a pan on a medium to high heat until they are nicely coloured. Add them to the slow cooker as you go.



Season the pork with salt and fry it until brown on both sides. Pop this into the slow cooker on top of the vegetables.

Drop in the pearl barley and herbs and mix well it all well.

Add the cider to the pot and cover everything with chicken stock. You don't want too much liquid. It's important that it just covers the contents.

Put the lid on and relax for 4-5 hours (or more) until the pork is tender. Have a little look halfway through, just to check if more liquid is required. Add in a final small handful of chopped herbs right at the end.

With the addition of the pearl barley, this really is a super one-pot family supper.

*Hear wonderful recipes on Nick Coffey's Weekend Kitchen every Sunday morning*

*on BBC Three Counties radio at 11am. You can also join Nick every weekday afternoon at midday for brilliant local guests with great stories to tell and all the music you want for your early afternoon.*



95.5 FM | 103.8 FM | 104.5 FM | DAB | [bbc.co.uk/threecounties](http://bbc.co.uk/threecounties)



## Dunstable at War

### Derek Bonfield - of Shepherd's Farm, Icknield Way

I was born on the 27th November 1924; so I was 15 when war was declared in 1939 on a Sunday morning, when my parents and I sat on the front lawn listening to the radio. I was born and brought up on Shepherd's Farm along the Icknield Way, when it was a poor time for agriculture. All the land had to be ploughed up and put into production. Up until then the ground had not been ploughed for many years, so father had to go and buy all the equipment to

do this. The government paid you £2 if you ploughed up grassland and turned it into production, although I don't think they paid for the machinery and we didn't get any grants.

We had pigs, cattle, hens, a horse and of course we had a great infestation of rabbits. We also had 2 dairy cows - house cows, my mother used to milk those and look after the hens. On part of the farm near the road was a field called the Chute. Over the previous years they had quarried chalk from there to make up the road. Afterwards, the council in Dunstable tipped spoil and rubbish into it, hence it was called the Chute. We used to see a lot of blue butterflies - Chalk Blues. The best part of the farm was the apple orchard in the valley. We used to put wire mesh around each apple tree to keep the rabbits off. In 1940 we had a very cold winter when the snow was quite deep covering the top of the wire mesh - this killed many of the rabbits.

We were controlled by the Ministry of War who made us grow potatoes. On one occasion this was an absolute failure - the potatoes did not grow well because of the chalk soil. It was very poor and in places you could see the chalk on the surface. We used to grow corn and we'd under sow the corn with clover and then, when the corn was cut, we also had a crop of clover to plough back into the ground. The petrol we used for agriculture was coloured red. It used to leave a red stain round the carburettor so you couldn't use it in your car.

Times were tough. The first service we had was a telephone; our number was 38! We didn't have electricity or water laid on but we did have a well which was 80ft deep. We used a rope to pull the water up which was clear and sparkling, lovely water coming out of the chalk. If you drew the water from the well you couldn't drink it straight away because it was so cold. We used to get cyclists stopping to ask for a drink but we daren't let them; we thought they'd get stomach cramps, it was so cold. There was another well in one of the fields near the Chute; 60ft deep where the water was equally nice, we used it for the cattle.

Most of our groceries were delivered from the International Stores. Mr Pearson used to come round with a model T Ford and then later an Austin. I can see him slinging his money bag on his back now and cranking it up. He used to come late at night sometimes; I suppose we were last on his round. The baker used to come from Eaton Bray.

The biggest businesses in Eaton Bray were the glasshouses, growing tomatoes. My wife's relatives worked there in the war. It looked like a lake from up on the Downs. I think Mr Bates from Church Farm in Whipsnade grazed sheep on the Downs.

In 1948 father sold the farm and moved to Devon. I stayed here, I had married by then. *This is taken from the book Dunstable and District at War. Have you ever thought of writing/publishing that book inside us all? If so, and you want help or advice to do this contact Tracey or Steve on 01525 229695.*

---

## THE PENDLEY ESTATES SALE 1915 CONTINUED

Continuing our articles from the July & November 2016 issues

LOT 28

(Coloured *Blue* on Plan).

### A Freehold Half-timbered Cottage

KNOWN AS

### The Abbey House, Edlesborough Road,

two stories in height, with tiled gabled roof, and containing Four Bed Rooms, Sitting Room, Kitchen, Wash-house, Store Room and Coal Store.

### OUTBUILDINGS

adjoining, timber-built and thatched, of Barn, Granary, Stable, Trap House and Shed, together with Yard.

### Grass Orchard and Garden

IN ALL ABOUT

1 rood                      15 poles

and being Pt. No. 250 on Plan.

Let to Mr. Henry Howe on a Yearly (Michaelmas) Tenancy, at the Rent of

**£16 per annum.**

The Vicarial Tithe is apportioned at 3d., the value for 1915 being 2½d. The Land Tax paid in 1914 was 15s.



## St Mary's 100 Club

The lucky prize-winners are:

<b>November</b>			
1st prize	#97	Georgina Rusling	£58.50
2nd prize	#85	Robert Stilliard	£35.10
3rd prize	#17	Anne Hendrickson	£23.40

<b>December</b>			
1st prize	#50	Roger Wilkinson	
2nd prize	#14	Richard Evans	
3rd prize	#124	Ian Binks	

<b>January</b>			
1st prize		Sheila Banks	
2nd prize		Maureen Cecil	
3rd prize		Charles Parrott	

The annual subscription for a ball in the draw is £24 – that's £2 per month for 12 months. If you'd like to give a year's subscription to a friend or relative (they don't have to live within our community) then please contact me for an application form. If they do live outside of our community, then please indicate whether you'd like me to email them each month with the results of the prize draw – in this way they'll be regularly reminded of your gift!

If you'd like to make such a gift, or join the fun yourself (for just £2 per month), then please contact me (Gary Freeman) for an application form – [gary@old-wrestlers.demon.co.uk](mailto:gary@old-wrestlers.demon.co.uk)  
Good Luck!!”

## Edna Schofield - a Homecoming

Edna's ashes were interred at St Mary's Church on Friday 13th January and for the little family group there it was a homecoming. Allan and Edna moved to 18 Church Lane, Eaton Bray in 1981. She had lived on her own since Allan's death in a car accident in 1990, and her ashes were placed next to his at the end of a short service. Edna received tremendous support from friends and neighbours in church and village in the difficult years after Allan's death and then as her health deteriorated and she had to rely increasingly on carers.

Edna moved to Swiss Cottage Care Home in Leighton Buzzard in 2013. She celebrated her 100th birthday there in June 2015, surrounded by nephews and nieces, grandchildren and great grandchildren. She passed away on 13th December 2016, aged 101.

In the little service in church we treasured family memories and want to extend our gratitude and heartfelt thanks to all who have been part of Allan and Edna's life in the village and especially to those who gave so much to Edna in her later years.

*Helen Evans and Andrew & Mary Schofield*





# Stay & Play Toddler Group

# Musical Monkeys

Eaton Bray Village Hall  
10-11.30am on Fridays

£4.50 for one adult and child  
£1 for extra children/adults  
0-6 months free

# fitness 4fun



Get those muscles working! Tone and strengthen arms, legs, bums and tums – you'll look and feel great.

Why not give it a go? Only £5 per week for one hour of fun fitness. Pay-as-you-go, come when you can.

Come along and join our friendly group.

Everyone welcome.

No need to book – just show up.

What: Fitness4Fun with Kay

Where: Edlesborough Memorial Hall

When: Every Friday, 10:00-11:00 am

## NORTHALL VILLAGE HALL needs more willing hands!

People to help with occasional projects such as decorating, tidying the grounds and one-off projects as and when they occur.

It's fun and rewarding when a band of volunteers come together to pool resources – we know as we've been doing it for many years! We are now reaching out for more people to volunteer alongside us. A little of your time once in a while will help keep the Hall – a Village Asset – open and running effectively for all of Northall to enjoy. If you can offer any kind of help please do get in touch; we'd love to hear from you.

Email us at: [northallevents@hotmail.com](mailto:northallevents@hotmail.com)  
or contact **Kevin Cubbage** on 01525 220361

Northall Village Hall  
Management Committee



## FREE INITIAL CONSULTATION

ALL ACCOUNTING,  
PAYROLL AND TAXATION  
SERVICES COVERED

Specialising in New Business Start-Ups

- Fixed Fee Quotes
- Unlimited Email and Telephone Support
- Back Office Solution

(dealing with your back office accounts function enabling you to focus on the rest of your business)

Please contact us for more information...

Gable End, Sparrow Hall Business Park, Leighton Road, Edlesborough, LU6 2ES

Call us on... 01525 229 539

enquiries@rileyaccounts.co.uk • www.rileyaccounts.co.uk

@RileyAccounts • Also on

"YOUR LOCAL ACCOUNTANT"



Hi, My name's Gina I am an ex-professional dancer and have worked in fitness since 2000 so you know you are in safe hands with me. If you haven't already tried CLUBBERCISE come and have a go. The darkened room gives people confidence if they are shy or coming alone. With great Club Anthems you'll soon be dancing along burning those calories and reaching your fitness goals. It really is such fun you'll be hooked.

Come and join us at EATON BRAY VILLAGE HALL – THURSDAYS  
-7.45pm £5 Pay on the door. For more info give me a call on 07846421756 See you there !!

**And once the storm is over, you won't remember how you made it through, how you managed to survive. You won't even be sure, whether the storm is really over. But one thing is certain. When you come out of the storm, you won't be the same person who walked in. That's what this storm's all about.**

*-Haruki Murakami*



 THE EARTH TRIBE

"Excellent experience. I nearly fell asleep whilst having my fillings done! Very reassuring - no rush. I was made to feel completely at ease. Thank you!"  
- R.R



Edlesborough Dental Practice



**floss and smile**

gentle dentistry



"Without doubt the most competent, gentle & lovely dentist...'  
..friendly warm manner instantly put me at ease. I would highly recommend this practice '  
-M.C

## Edlesborough Dental Practice

**Telephone: 01525 223175**

11 Cow lane, Edlesborough, LU62HT

[www.flossandsmile.co.uk](http://www.flossandsmile.co.uk)



The Clear Alternative to Braces



Implants

**HOME VISITS AVAILABLE ON FRIDAYS**

**EMERGENCY TEXT TO : 07590035899.**

**Dentist :**  
Dr A. Johar  
GDC number : 111350

**Hygienist:**  
Mrs Jane Showder  
GDC number : 2344

**General Family Dentistry \*Crowns \*Bridges \*Dentures \*Smile Makeovers  
\*Tooth Whitening \*Tooth straightening \*Implants \*Botox  
\*Hygienist \*Sedation \*0% Finance **

FREE QUOTATIONS



**AJR**

BUILDING SERVICES

Over 25 years experience

Friendly and Reliable Service

Fully insured

All aspects of building work undertaken:

- Kitchens & Bathrooms
- Refurbishments
- Garage Conversions & Extensions
- Plastering, Painting & Decorating
- Wall and Floor Tiling
- Patios and Fencing
- Fascias & Soffits
- General Maintenance

Mobile: 07931 308306 Tel: 01582 475428

Email: [ajrbuildingservices@hotmail.com](mailto:ajrbuildingservices@hotmail.com)

**A McClelland  
Pest Control**



**FOR FAST RESPONSE CALL:**

**Mobile 0777 494 8415**

**Office 01582 872158**



*specialists in: wasps - bees - ants  
hornets - fleas - cockroaches - bed  
bugs - pigeons - magpies - rabbits  
rats - mice - moles - squirrels  
foxes - mink - feral cats*



**UNMARKED VEHICLES**

For further information please call or email  
[amccellandpestcontrol33@gmail.com](mailto:amccellandpestcontrol33@gmail.com)



STOCKISTS FOR



GUTTER BRUSH

**- All aspects of Pressure Washing -  
Roof Cleaning / Coating specialists**

- Safe cleaning system using rope access
- Roofs cleaned using 'controlled' pressure washing
- All water recycled

For before and after photos please visit:  
<http://www.facebook.com/greatoutdoorsandin>



**0800 298 5883**  
[www.greatoutdoorsandin.co.uk](http://www.greatoutdoorsandin.co.uk)



**WK WasteKing**  
Recycling today for tomorrow...

94% of all the waste we collect is recycled

**The Complete Waste Management Service**

Local Skip Hire	Man & Van	Rubbish Clearance	Nationwide Grab Hire	Sweeper Hire

Call us today on: **01442 210047**  
or email: [skiporders@wasteking.co.uk](mailto:skiporders@wasteking.co.uk)

**www.wasteking.co.uk**

Unit 25, Airfield Industrial Estate, Long Marston, Cheddington HP23 4QR  
Waste carrier CBU93920 - Transfer Site License 402839

# Brockley Designs

*Design and Publishing Services*

*Have you written a memoir, novel or your family history?*

*Interested in seeing it in print?*

For an informational eBook and a free one-half hour telephone consultation

Contact **Rebecca Shaw**

**07931 950001**

or +1.404.247.8269

[shawrebecca@gmail.com](mailto:shawrebecca@gmail.com)

[www.BrockleyDesigns.com](http://www.BrockleyDesigns.com)

# Leighton Plumbing & Heating

Oil fired boilers  
service, repairs  
& installations



All other aspects of plumbing  
& heating undertaken

Oftec registered & insured

01525 385250  
07774 567472

11 Woodman Close  
Leighton Buzzard  
Beds  
LU7 3NU

leighton-plumbing@ntlworld.com

 **Stoten Gillam**  
Chartered accountants  
Chartered tax advisers

99 High Street South  
Dunstable  
LU6 3SF

Tel: (01582) 608601  
www.stotengillam.co.uk

ICAEW  
CHARTERED  
ACCOUNTANTS



"Practical  
Solutions for  
Growing  
Businesses"



  
*We clean your oven...so you don't have to!*

Call today to have your oven, hob, extractor or  
Aga professionally cleaned

Contact Paul Joyce: Tel 01525 792761  
Mob 07808 580718  
pauljoyce@ovenwizards.com

# The Quantum Energy Holistic Wellness Centre



Gift Vouchers

## Balance Your Mind Body & Spirit



Health Screening  
Personalised Remedies  
Bioresonance

Far Infrared Detox Bed  
Aqua Detox  
Amethyst Biomat

Aura Chakra Imaging  
& 40 page Reports



Polarised Light &  
Colour Therapy

Vibrational Medicine  
Tesla Energy Lights  
Frequency Therapy

Profound Relaxation  
Perkl Energy Spa  
Flower Crystal Remedies




Ring Emma today for a free phone consultation

Also treated are; **Food Sensitivity** **Seasonal Affective Disorder (SAD)** **Environmental Sensitivity**  
**Allergy Sensitivity** **Vitamin Mineral Assessments** **Desensitise to pets, environment & smoking**

Appointments 01525 221111 [www.energy-medicine.uk](http://www.energy-medicine.uk) [emma@energy-medicine.uk](mailto:emma@energy-medicine.uk)

Buffalo House, Mill Road, Slapton, LU7 9BT (we share a drive with Equestrian Centre)

# THE PERFECT PLACE FOR ANY OCCASION....

 *ACCOMMODATION - OFFERING A VARIETY OF  
ROOMS/SUITES*

 *BREAKFAST, LUNCH OR DINNER  
IN OUR HENRY'S RESTAURANT*

 *SUNDAY LUNCH*

 *MEETINGS*

 *WEDDING PACKAGES*

 *PRIVATE FUNCTIONS*

 *FUNERAL RECEPTIONS*

 *CHRISTMAS & NEW YEAR PARTIES*



FOR MORE INFORMATION ON WHAT WE OFFER,  
PLEASE CALL US ON

**01582 662201**

OR VISIT OUR WEBSITE.



# ANDERTON ELECTRICS

*Keeping you wired up.*

- ✓ Free quotations, no obligations
- ✓ Emergency Work – day or night
- ✓ Domestic or Commercial
- ✓ A name you can trust

**FREE NO  
OBLIGATION  
QUOTATIONS**

Contact James direct on:

Mobile: **07771 698 151**

Office: **01582 343 123**

Email: [james@andertonelectrics.co.uk](mailto:james@andertonelectrics.co.uk)

Proud members of  
**Checkatrade.com**  
Where reputation matters

**See our feedback on Check a trade**

[www.checkatrade.com/andertonelectrics](http://www.checkatrade.com/andertonelectrics)



[www.andertonelectrics.co.uk](http://www.andertonelectrics.co.uk)

# D Scott and Sons Home Services Limited

contact us now on  
**01525 791563**  
**07921 670437**

## Plumbing and Heating Specialists

-  **Boiler Repair**
-  **Boiler Installations**
-  **Powerflushing**
-  **Annual Servicing**
-  **Landlords Certificate**
-  **Magnetic System Filters**
-  **Radiator Valves**
-  **Oil Central Heating**

### Other services...

We offer a full range of plumbing services including full bathroom refits, shower replacements, kitchen appliance installations, sinks, taps, traps & drainage.



**24/7  
Call Out**



[www.dscottandsons.com](http://www.dscottandsons.com)

## STERLING & LAW

INDEPENDENT FINANCIAL CONSULTANTS

### DO YOU NEED FINANCIAL ADVICE?

Can we help you to review your current or proposed,  
Mortgages, Insurances, Pensions & Investments,  
Wills and Trusts?

Free Will with qualifying investments & pensions

Talk to us for a free initial consultation

LOCAL OFFICE: Toddington

Contact: Philip Hadlow  
Tel/Fax: 01525 874100  
Mobile 07768 277 532  
[philip@sterlingandlaw.com](mailto:philip@sterlingandlaw.com)



Sterling & Law Group plc is authorised and regulated by the Financial Conduct Authority.  
Your home may be repossessed if you do not keep up repayments on your mortgage.

[www.sterlingandlaw.com](http://www.sterlingandlaw.com)

## NEURO PHYSIO BERKHAMSTED

### SPECIALIST NEUROLOGICAL PHYSIOTHERAPISTS

BSc (Hons) HPC Registered

Providing Physiotherapy treatment in your own home if you have a neurological deficit affecting your movement including

- **Stroke**
- **Parkinsons Disease**
- **Multiple Sclerosis**
- **Balance Problems**

07786 363638 / 07909982569

[physio@neurophysioberkhamsted.co.uk](mailto:physio@neurophysioberkhamsted.co.uk)  
[www.neurophysioberkhamsted.co.uk](http://www.neurophysioberkhamsted.co.uk)



# All Trees & Hedges

Reliable & friendly service • Family run business  
Competitive prices • Qualified advice • Fully Insured

## Tree work undertaken

Tree felling • Precision dismantling • Crown reduction  
Crown thinning • Crown lifting • Formative pruning  
• Stump grinding • Stump removal  
Deadwooding • TPO / conservation area work

## Hedge work undertaken

Hedge reduction • Hedge planting • Hedge trimming  
Shrub clearance • Hedge laying

## Other Services

Grass Cutting • Fencing • Green Waste Recycling • General  
Garden Maintenance • Tree Lighting • Logs / Kindling

CALL NOW ON:

**07701 094 934**  
**01525 220 823**

E: [info@alltreesandhedges.com](mailto:info@alltreesandhedges.com)

W: [www.alltreesandhedges.com](http://www.alltreesandhedges.com)

CDM Builders Ltd  
07984086029

GENERAL BUILDING  
NEW HOMES  
EXTENSIONS  
CONSERVATORIES  
ALTERATIONS  
BRICKLAYING  
GROUNDWORK  
PATIOS

With over 20 years experience in the building trade

All aspects of work undertaken by our own professional tradesmen to a very high standard

Please contact Clive for a free quotation  
T: 01525 222605 M: 07984086029  
Email: Clive.munt@hotmail.co.uk

# Coffee Tavern



**Large Hall** £6.00 per hour

**Committee Room** £3.50 per hour

**Large Hall & Committee Room** £8.00 per hour

**Bookings 01525 220891**  
**Stairlift and access ramp available**



**DANIEL**  
**07956-500223**

- PLUMBING
- DECORATING
- GENERAL HANDYMAN

Email: djhpropertyms@gmail.com



**Electrical Services**  
www.rselectricalservices.com



**FULLY QUALIFIED  
ELECTRICAL ENGINEER**  
CPS Registered through NICEIC Scheme

Competitive prices and quality service

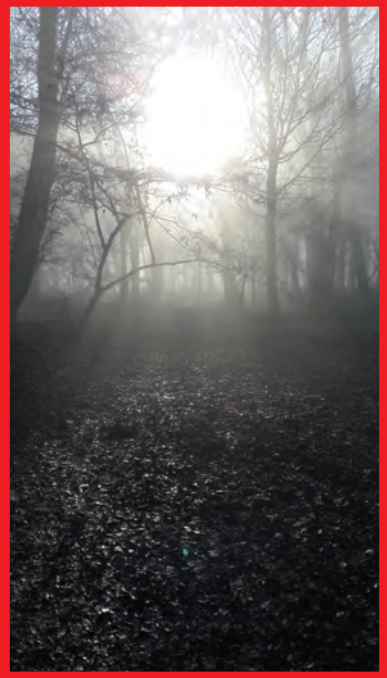
Available for all your domestic and commercial electrical requirements

No job too small

Call Russell Sears:  
**07578 008567**  
**01525 220008**

17 Good Intent, Edlesborough

# Your Photos



*Left: Ashridge Fog by Catherine Allen  
Above: Red Panda by Sally Siddons  
Below: Sunset at Startops Reservoir  
by Richard Woodhead*



# February at the Grove



## Grove Film

February film brings a whole host of genres to the screen, with romantic tales of lost and found in **The Light Between Oceans (12A)**, the highly-anticipated Star Wars adventure in **Rogue One: A Star Wars Story (12A)** and Benedict Cumberbatch's portrayal of **Dr. Strange (12A)**.

## Cirque Enchantment

Thu 2 February 7.30pm, Tickets: £22 – concession discount available, Age 6+

Welcome to a mystical world of frozen beauty and magical adventure. Cirque Enchantment; the concert style cirque production featuring stunning choreography, breath-taking vocals and mesmerising circus performers, a stunning show that will delight all the family.

## Roy Wood

Fri 3 February 7.30pm, Tickets: £29.50

Roy Wood and his rock 'n' roll band are performing all his classic hits this February: I Can Hear The Grass Grow, Flowers in the Rain, Blackberry Way and I Wish It Could Be Christmas Everyday to name a few. Plus support act!

## Bye Bye Baby

Sat 4 February 7.30pm, Tickets: £19.50 – concession and Friend discount available

Back by popular demand, **Bye Bye Baby** takes you back in time, on a musical journey through the career of **Frankie Valli & The Four Seasons**, whose songs graced such films as The Deer Hunter, Dirty Dancing and Grease.

## Grove Production Project (GPP) Auditions

Sun 5 February 10am registration, Wed 8 February 4.30pm registration

Aged 8-18 and looking to make Summer 2017 unforgettable? Make a scene in our next Grove Production Project of a full-scale cherished musical, or be part of the technical team working backstage! For more information and to request an application pack, contact Anna Elmore by emailing [GroveEducation@ILife.co.uk](mailto:GroveEducation@ILife.co.uk) or call 01582 884 185, or alternatively visit the website to download from [www.grovetheatre.co.uk/take-part/grove-production-project](http://www.grovetheatre.co.uk/take-part/grove-production-project).

## Wolf Works – Live Screening

Wed 8 February 7.15pm, Tickets: £15 – concession and Friend discount available

Live broadcast from the Royal Opera House. Each of the three acts springs from one of Virginia Woolf's landmark novels: Mrs Dalloway, Orlando and The Waves – but these inspirations are also enmeshed with elements from her letters, essays and diaries.

## Psychic Sally: Call Me Psychic

Thu 9 February 7.30pm, Tickets: £24

The nation's favourite psychic, Sally Morgan, is back and better than ever, with a funny, entertaining, sometimes heart-breaking and often controversial show that is her most jaw-dropping yet.

## Jamie Raven

Fri 10 February 7.30pm, Tickets: £21 – concession and Friend discount available, Age 6+

Jamie Raven burst onto an unsuspecting world during the 2015 series of Britain's Got Talent. His magic amazed audiences and even made Simon Cowell believe in magic! Now one of the most viewed magicians in the world, he's making his way to the Grove Theatre to share some of his astounding magic with you.

## Opera Boys

Sat 11 February 7.30pm, Tickets: £18.50

Leading men from London's West End combine in a powerhouse of vocal harmony to deliver a stunning blend of music to dispel the myth that opera is boring.

### **Amadeus – Encore Screening**

Sun 12 February 2pm, Tickets: £15 – concession and Friend discount available

Encore screening from NT Live. Music. Power. Jealousy. Wolfgang Amadeus Mozart, a rowdy young prodigy, arrives in Vienna, the music capital of the world – and he's determined to make a splash.

### **Half-Term Holiday Theatre Club**

Mon 13 – Fri 17 February 9am-3pm, Tickets: £20 per day, Ages 6-14

A fun-packed week filled with lots of theatre related activities to excite, inspire and enjoy! These include arts and crafts, prop making, playing characters, audition skills workshop, dancing, singing and even writing and directing. Come along for a day, 2 days or all 4 days.

### **Jurassic Adventures**

Tue 14 February 5pm, Tickets: Adults £16/ Children £13/ Family (2 adults, 2 children) £52, Age 3+

The most exciting family show – since time began – is about to be discovered... by you! Get transported to a prehistoric place full of fun, thrills and screams, as a brave cast take you on a journey to find dinosaurs!

### **Barnstormers Stand Up Comedy**

Thu 16 February 8pm, Tickets: £12.50 in advance/ £15 on the door

Make Thursdays game changers with a rib-tickling night out. Our compère introduces three top comedians from the London circuit, with a different line up each month.

### **The Big Chris Barber Band**

Fri 17 February 7.30pm, Tickets: £19

Chris Barber OBE is one of the last British jazz legends around, and an icon of traditional jazz in the United Kingdom. Together with his 10 piece BIG band, they stand out as one of the finest, if not the finest, of its kind anywhere in the world.

### **Superslam Wrestling Live**

Sat 18 February 6pm, Tickets: Adults £15/ Children £10/ Family (2 adults, 2 children) £45, Age 6+

Superslam Wrestling returns with a huge 2017 explosion of top talent from all the worldwide wrestling federations, to compete in a truly international Royal Rumble over the top rope action not to be missed.

### **A Viennese Strauss Gala**

Sun 19 February 7.30pm, Tickets: £22 – concession and Friend discount available

Back by popular demand with a sparkling new 15th anniversary production, A Viennese Strauss Gala recreates the romance of the Viennese festive season, reminding you of a bygone age of glamorous soirees and Strauss waltzes.

### **Annie – RARE Productions**

Thu 23 February 7.30pm, Fri 24 February 7.30pm, Sat 25 February 2.30pm & 7.30pm

Tickets: £16/ £15/ £14/ £11 – concession discount available

A community performance of Annie, presented by RARE productions, the UK's largest youth musical theatre company. Annie is an orphan, living in an orphanage run by the sadistic Miss Hannigan, on a quest to find her real parents.

### **Saint Joan – Encore Screening**

Sun 26 February 2pm, Tickets: £15 – concession and Friend discount available

Encore screening from the Donmar Warehouse brought to you by NT Live. Gemma Arterton stars in this performance of Bernard Shaw's classic play that follows the life and trial of a young country girl who declares a bloody mission to drive the English from France.

### **The Sleeping Beauty – Live Screening**

Tue 28 February 7pm, Tickets: £15 – concession and Friend discount available

Live broadcast from the Royal Opera House. A perennial delight and a much-loved classic, The Royal Ballet's The Sleeping Beauty combines the best of classical ballet, splendid music and talented dancers.

## **Restoring the Record or “Finding the Missing Links”**

On 1st January 2026, it will no longer be possible to use historic map and documentary evidence to claim ‘lost ways’. Any path, track, alleyway, bridleway, cut-through etc. not registered on the Definitive Map – or submitted for registration - could well be in danger of being lost. Even old and still well-used, but officially unrecorded, routes may be at risk.

What does this actually mean to those who walk, cycle or horse ride along our public foot-paths and bridleways? The basic message is stark – we take our access to the countryside for granted; we use routes for recreation and as a means of linking places together without thinking but, if we don’t check what we already have or what has been used in the past and that it is legally recorded, we could lose them forever. The ancient maxim on which many claimants have relied, in the past: “once a highway always a highway” will be history.

Simply put, a small strip of land between a highway and the start of a definitive path might be unregistered. After 2026, a landowner could put a gate or fence across it and restrict all entry to the public – quite legally – thus permanently hindering access to the countryside because we have assumed, but not checked, that the Definitive Map is up-to-date and accurate. It will not be just our generation which will suffer but those who follow after us and is that the legacy we wish to leave them? It is worth the risk? The ‘Restoring the Records’ project is two-pronged with something for everyone; volunteers are needed to check maps, walk paths to ensure the correct signs are in place, do research, interview local people about their memories and get new links approved - to list just a few activities and it is local knowledge that will be the key.

The plan is to recruit a volunteer [s] in every Buckinghamshire Parish and Town Council to spread the load and speed up the exercise – 10 years passes far quicker than you might think! No previous knowledge or training is needed; the Project Team is preparing a simple step-by-step guide which will answer most of the more common questions and will supply a map of your local area showing the rights of way.

If you are interested in becoming involved in this fascinating and very important treasure hunt, please contact Ross Osborn, the Project’s Volunteer Co-ordinator, on rossosborn41@gmail.com who will be happy to answer any questions and arrange for all necessary information and maps to be sent to you.

## **Annual Festive Bingo in Memory of Basil Thorne - 2016**

The bingo doblers and Christmas jumpers came out in Dagnall as the bingo night in early December kicked off Christmas festivities with a really fun evening. There was a lovely buffet and lots of great raffle prizes. In total the event raised just under £90 for Dagnall Village Hall.

About fifty people came along and all said what a wonderful time they had had - a night we are sure Basil would have enjoyed.

Many thanks to caller Claire who as always did a brilliant job and Brian, Bobby, Dave, Carol and family for their help on the night.

We appreciate everyone's support and once again have had lots of requests for another one this year!

☞The Thorne family

## Edlesborough W.I.

Our November and December meetings were held in the Memorial Hall. The first meeting took place on 8th November, when our speaker, David Mercer, spoke on the subject of, 'A Life in Tennis'.

The name David Mercer may be familiar to many of the readers, particularly to those who enjoy sports because David is a sports broadcaster, specialising in: tennis, badminton and rowing. David is a keen and gifted sports person himself who, when at school, won the Welsh Junior Doubles title in 1968 and captained his university tennis team in 1969. Having studied law at Nottingham University and acknowledging that he was not quite good enough to be a top level



tennis player he did not take up sport for a living. Instead, he became a solicitor in Swansea, having qualified in 1973.

However, the love of sport and with tennis in particular never fading, David took up umpiring and from 1973 to 1984 he umpired at Wimbledon. In 1983 he was in charge of the Men's Double Final and in 1984 the Men's Singles Final between Jimmy Connors and John McEnroe. He has also umpired many other tournaments including Davis Cup ties.

Having won a competition organised by BBC Wales, David began broadcasting part-time in 1979 and in 1984 saw him broadcasting full-time when he became part of BBC Radio Sport in London. In 1990 he was appointed its tennis correspondent and two years later he moved from radio to BBC Television. Proudly he told his audience how much he has enjoyed being a member of the BBC's Wimbledon commentary team since 1985. There were numerous interesting, fascinating and anecdotal tales he told his audience, all of which were based on and around the subject of tennis.

David also informed his listeners that he not only commentates for the BBC but also for BT Sport,

Eurosport and a number of other networks. He is a former Chairman of the Lawn Tennis Writers' Association, a member of the International Tennis Federation's Media Commission, a Buckinghamshire Ambassador and a former member of the Sports Council for Wales.

David was also interested in politics. In the 1979 General Election, David came within 401 votes for being the Member of Parliament for Swansea West and during the 1983 General Election he assisted in the Prime Minister's Private Office.

David was a very interesting and informative speaker. It is fair to say that all members of his audience gleaned plenty of fresh information. A very enjoyable evening was had by all.

The second Meeting took place on 13th December when we held our AGM and Jenny was re-elected our president. The AGM was followed by our delicious Christmas meal, which was provided by Jane and her team of Happy Helpers. Poems and anecdotes were recited by members of our meeting and the invited visitors from the three WI groups which Edlesborough WI is amalgamated, were presented each with a poinsettia.

The speaker on this occasion was Colin Oakes, who spoke on the subject of his 'career' - that of being Father Christmas in a garden centre. The title of his talk was, 'Eighteen Years in a Grotto: Santa Speaks'. The talk was very festive but also reflected the change in the public's attitude towards people working with children.

The evening concluded with a very successful raffle; with lots of donations.

To those ladies, who have never been to a WI meeting or perhaps you have but for some reason have not been to one for some time, our next meeting will take place in the Memorial Hall on 14th February at 7.30. Why not come along? You will receive a friendly welcome.

✍️ Jackie Flint



# Dagnall Weather Station (AONB)

## Weather Conditions for November & December 2016



Elevation: 450 ft - Latitude: 51° 50' 13" North - Longitude: 0° 33' 34" West  
November 2016

	High	Date/Time	Low	Date/Time
Temperature	13.8°C	15 Nov 13.00	-5.6°C	30 Nov 04.00
Mean Temp	5.9°C	Dominant Wind:	W	
Humidity:	97%	1-13-21 Nov	57%	20 Nov 13.00
Barometer:	1035.3 hPa	30 Nov 10.00	980.1 hPa	17 Nov 09.00
Wind Speed	33 mph W	17 22 Nov	Months avg.	4.7 mph
Wettest Day	24.41mm	21 Nov		0.961 ins
Monthly Rain:	Total	Nov	93.0 mm	3.66 ins

### December 2016

	High	Date/Time	Low	Date/Time
Temperature	13.7°C	9 Dec 12.00	-2.6°C	28 Dec 02.00
Mean Temp	6.4c	Dominant Wind:	SSE	
Humidity:	100%	5 Dec 20.30	68%	14 Dec 15.00
Barometer:	1044.5hPa	27Dec 10.00	1015.1 hPa	10 Dec 19.00
Wind Speed	40 mph SW	23 Dec 16.30	Months avg.	4.9 mph
Wettest Day	14.81mm	10 Dec	14.81 mm	0.583 ins
Monthly Rain:	Total	Dec	26.8 mm	1.055 ins

**November** started mild but by the morning of the 3rd temperatures had dropped below zero. This pattern continued for a few days. In the middle of the month the high pressure brought us milder days and nights, reaching the month's maximum temperature 13.8°C, then rain. The month ended on a cold note with temperatures as low as -5.6°C. Rain was just above average and the winds were light so overall a calm month.

**December** was a month of fog, frost, sunshine, dry and periods of mild weather. December started frosty followed by few unsettled days which brought fog which returned a few times throughout the month. December was a dry month with only 26.8mm of rain. This was just a 1/3 of the monthly average and over 50% of that amount fell in one day on the 10th. As we reached the end of the month the frost returned with temperatures dropping down to -2.6°C.

## Annual Climatological Summary for 2016

Temperature

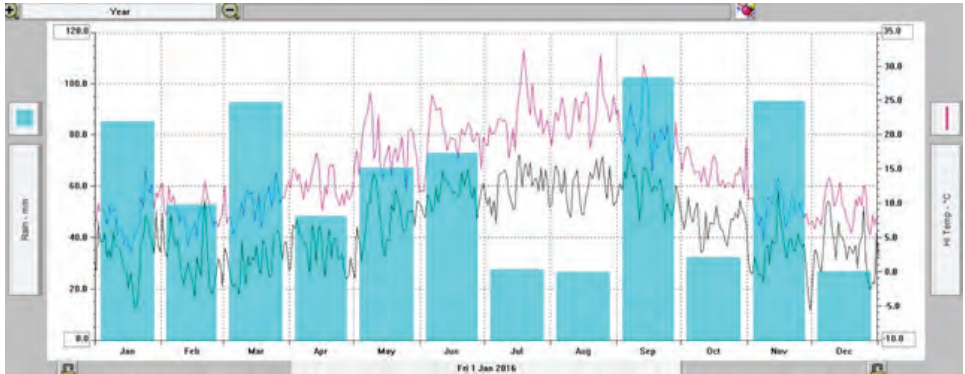
Precipitation

Wind Speed

	High Temp	Date	Low Temp	Date	Mean Temp	Rain Day Max	Date	Month Total	Hi Wind	Date	Avg	Dom Dir
Jan	15.2°	24 <sup>th</sup>	-5.2°	19 <sup>th</sup>	5.6°	15.8mm	11 <sup>th</sup>	85.1mm	42.0	29 <sup>th</sup>	7.8	S
Feb	13.3°	21 <sup>th</sup>	-3.7°	16 <sup>th</sup>	5.0°	12.4mm	6 <sup>th</sup>	52.6mm	49.0	6 <sup>th</sup>	5.9	W
Mar	14.6°	25 <sup>th</sup>	-3.3°	8 <sup>th</sup>	5.6°	23.6mm	9 <sup>th</sup>	92.6mm	48.0	28 <sup>th</sup>	7.4	NE
Apr	17.3°	13 <sup>th</sup>	-1.0°	27 <sup>th</sup>	7.7°	11.6mm	15 <sup>th</sup>	48.2mm	34.0	6 <sup>th</sup>	5.2	NW
May	26.1°	8 <sup>th</sup>	-0.9°	1 <sup>st</sup>	12.7°	25.0mm	23 <sup>rd</sup>	67.0mm	31.0	23 <sup>rd</sup>	6.8	NNE
Jun	25.8°	6 <sup>th</sup>	7.7°	27 <sup>th</sup>	15.2°	19.8mm	20 <sup>th</sup>	72.9mm	35.0	2 <sup>nd</sup>	5.6	NNE
July	32.4°	19 <sup>th</sup>	7.1°	6 <sup>th</sup>	17.5°	20.8mm	12 <sup>th</sup>	27.4mm	32.0	10 <sup>th</sup>	6.0	W
Aug	31.7°	24 <sup>th</sup>	8.0°	10 <sup>th</sup>	17.7°	6.2mm	19 <sup>th</sup>	26.4mm	32.0	20 <sup>th</sup>	4.8	W
Sep	30.3°	13 <sup>th</sup>	6.9°	23 <sup>rd</sup>	16.2°	68.6mm	16 <sup>th</sup>	102.2mm	31.0	9 <sup>th</sup>	4.2	W
Oct	19.5°	31 <sup>st</sup>	2.8°	10 <sup>th</sup>	10.7°	16.2mm	16 <sup>th</sup>	32.2mm	29.0	5 <sup>th</sup>	4.6	E
Nov	13.8°	15 <sup>th</sup>	-5.6°	30 <sup>th</sup>	5.9°	24.4mm	21 <sup>st</sup>	93.0mm	33.0	17 <sup>th</sup>	8.1	W
Dec	13.7°	9 <sup>th</sup>	-2.6°	28 <sup>th</sup>	6.4°	14.8mm	10 <sup>th</sup>	26.8mm	40.0	23 <sup>rd</sup>	9.5	SSE
	YEAR	TOTALS										
Lows /Max	32.4°	July	5.6°	Year	Avg 10.5°	Total Rain	Year	726.5mm 28.602ins	Wind 49.0 mph	Nov	Wind 6.3 mph	Year avg W



**This shows the monthly rain fall and the high and low temperatures throughout 2016. The yearly rain fall was 726.5mm just under the 9 year average**



Visit: [http://bit.ly/weather\\_dagnall](http://bit.ly/weather_dagnall) for weather data 24 hours a day, updated every minute, this site forecast and much more and the original site [www.dagnallweather.co.uk](http://www.dagnallweather.co.uk). If anyone has questions, comments or wishes to contact me please email: [david@dagnallweather.co.uk](mailto:david@dagnallweather.co.uk) or telephone: 01442 843883. Dagnall weather now has an app for your ipad & iphone! Just go to the apple store, search for Wunderstation and follow the instructions to Dagnall Weather Station. Now updated every minute.



*Recently I was driving home from the shops at around eleven in the morning near Dunstable. Whilst stuck in a queue of traffic, I noticed out of the corner of my eye, a typical white builder's van suddenly pull into the lay-by three or four cars up.*

*Also in the space was a small motorcycle with a helmeted rider.*

*The driver of the van jumped out and walked purposely towards the bike. He was a big, baldish, bearded guy with dusty overalls. What had happened? Had the bike cut the van up? Had the van been at fault? Had words and paint been exchanged further down the road? All manner of scenarios zipped through my mind.*

*The big guy reached the biker and started talking animatedly into the full face crash helmet, I was too far away to hear anything clearly. I was worried this was going to get very ugly. Suddenly the builder straightened up and grabbed the helmet in his big hands and tilted it up to his face. Jeez! What was about to happen. Then, without warning, a look of absolute love, like I have never seen before spread across his rough, grey, bearded face. He gently bent down his head and kissed the front of the bikers crash helmet with all the tenderness that the cold, scratched surface would allow. He then beamed a smile and said something directly into the opening of the lid and ambled back to his van.*

*By this time the traffic started to move off, and as quickly as it started the incident finished. But not in my mind. I have no idea who was under that helmet, male, female, daughter, wife or son. But I do know this, whoever it was, the guy in the van loved them like life itself. It made my day immeasurably better and made me think that we should all stop and kiss the ones we love while we have the chance.*

# Salvation Sound



Love is in the air! This month as many celebrate Valentine's Day our thoughts turn to love. The old children's stories and films gave us pictures of knights in shining armour on white horses and ended with everyone living happily ever after.

Disney films such as Sleeping Beauty, Cinderella, and Beauty and the Beast give us a picture of perfect love. So what or who do you think of when you think of that perfect love?

My thoughts have turned to Adam and Eve. A strange choice you may think, as they are remembered not for their perfect love for each other but for their one big mistake of wanting to be gods in their own right and therefore bringing sin into the world. Adam and Eve though were the first couple to be actually made for each other in the literal and spiritual sense. God made Adam, and so he wouldn't be lonely he made Eve for him, and from him. Their relationship was God's handiwork and despite the whole apple thing their life together was good. Theirs was the first love affair.

While we have never turned a pumpkin into a carriage or had a knight in shining armour to save us from the wicked queen or whisk us away to a pretty land of castles, flowers and singing to live happily ever after, we can experience perfect love in this world.

Just as God created Adam and Eve to live in perfect relationship with each other and with Him, He is at work in our relationships despite of the sin in the world. God is the source of perfect love. The Bible reminds us that the very essence of God is love (1 John 4:8). We are also told in 1 John 4:12, "If we love one another, God dwells in us, and his love is perfected in us." So even though Adam and Eve were an

example of imperfection; even though Adam probably forgot to put out the rubbish and Eve probably forgot to wash his leaf now and then, their imperfection was made perfect in their love for one another. No matter how flawed they were, their relationship was created in perfect love because God created it and He dwelt in the midst of it. Happily ever after doesn't always come with ball gowns and white horses but that's alright because if it comes from God it is perfect.

At weddings many people choose the reading from the Bible, 1 Corinthians 13, as it speaks of the perfect, ideal love.

'If I speak in the tongues of men or of angels, but do not have love, I am only a resounding gong or a clanging cymbal. ... If I give all I possess to the poor and give over my body to hardship that I may boast, but do not have love, I gain nothing.

Love is patient, love is kind. It does not envy, it does not boast, it is not proud. It does not dishonour others, it is not self-seeking, it is not easily angered, it keeps no record of wrongs. Love does not delight in evil but rejoices with the truth. It always protects, always trusts, always hopes, always perseveres.

Love never fails. ... And now these three remain: faith, hope and love. But the greatest of these is love.'

May this love be the measure for our relationships with others. May love be in the air!

## The Salvation Army, Booth Place, Eaton Bray Weekly Activities



### Sunday

Footprints (Sunday School)	9.45-10.45am
Morning Worship	11am
Messy Church	3-5pm
<i>(Last Sunday of the month)</i>	
Songs of Praise	4pm
<i>(3rd Sunday of the month from May to Dec)</i>	

### Tuesday

Coffee Morning	
<i>(Alternate weeks)</i>	10-11.30am
Music practices (all welcome)	7.30-9pm

### Wednesday

Home League	2.30-3.30pm
<i>(Ladies Mtg but all welcome)</i>	
Champions Challenge Club <i>(term time)</i>	
<i>(Ages 5-10 years)</i>	5.45-6.45pm

### Thursday

Parent and Toddler Group	
<i>(Term time)</i>	9.30-11.30am
Girls' Night Out	
<i>(1st Thursday of month)</i>	7.45pm
Sewing & Craft Bees	
<i>(2nd Thursday of month)</i>	7.45 pm
Ladies Fellowship	
<i>(Last week of month)</i>	7.45pm

*For further details please call Envoy Hilary Chadwick. T:01525 222087 / 07932 057490  
E: [hilary.chadwick@salvationarmy.org.uk](mailto:hilary.chadwick@salvationarmy.org.uk)  
W: [www.salvationarmy.org.uk/eaton-bray](http://www.salvationarmy.org.uk/eaton-bray)*

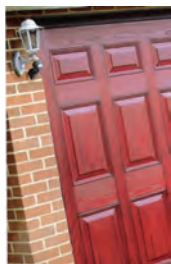


# Premier Garage Doors & Gates



## Quality Garage Doors

- ✓ Superb choice of designs in metal, wood and fibreglass
- ✓ Any size door made to your requirements
- ✓ Large selection of spares & fast repair service available
- ✓ New or existing doors converted to automatic
- ✓ Professionally fitted by own expert craftsmen
- ✓ Prompt free estimates & advice
- ✓ We cover all areas



**(EST 1984)**

DIY kits available  
Insurance work welcome  
Council approved  
Remote control gates also available



Unit 7, Sparrow Hall Farm, Leighton Road, Edlesborough LU6 2ES

**01525 220212**

**[www.premiergaragedoors.co.uk](http://www.premiergaragedoors.co.uk)**



# JANES FLOORING

Carpet

Vinyl

Laminate

Sofas

Karndean

**At Janes Flooring we fully understand buying a new floor needs careful consideration.**

**Affordability, Style & Colour** will all be major factors in your decision making so let us help you get there with our 35 year's experience in the flooring industry



**10% off**  
**February Orders**

- ◆ FULLY FITTED SERVICE
- ◆ UPLIFT & DISPOSAL
- ◆ MOVING OF FURNITURE

Browse our showroom at your leisure, borrow samples to look at the colours at home and we can arrange a home consultation and measure it's easy when you know how

**4-8 High Street Edlesborough LU6 2HS tel: 01525 220208**