

FOCUS



Remembrancetide

24th October - 11th November

November 2015

The local village magazine just for Us!

Eaton Bray, Edlesborough, Northall & Dagnall

The White Horse Inn At Eaton Bray

Market Square
Eaton Bray
Beds
LU6 2DG
01525 220 231
[www.thewhitehorseea
tonbray.co.uk](http://www.thewhitehorseea
tonbray.co.uk)



Midweek fixed price lunch
Monday to Friday 11.30am til 2.30pm
Great traditional pub dishes
1 course £6.50 : 2 course £10 : 3 course £13.50

Try our new Autumn Menu

Booking a Christmas party or family get together?

The White Horse offers
excellent value for money
Call now for our seasonal
party menu and Christmas day menu



JAZZ AT
THE WHITE HORSE
1ST SUNDAY EACH MONTH



Focus Magazine Committee

Joint Editor: George Crutcher

7 Summerleys, Edlesborough 221637

Email: george.crutcher@tiscali.co.uk

Joint Editor: Sally Siddons

34 Wallace Drive, Eaton Bray 221733

Email: sallysid@hotmail.com

Dagnall Representative: Sue Cawdell

10 Deans Meadow, Dagnall 01442 842200

Circulation Manager: John Plater

41 Church Lane, Eaton Bray 221095

Treasurer/Leaflet Enquiries: Ken Coates

10 The Nurseries, Eaton Bray 220868

Advertising: Sally Siddons

34 Wallace Drive, Eaton Bray 221733

Design and Layout: Tracey Moren

(Moren Associates Limited) 01525 229695

Printed by: Priory Press

Dunstable 01582 699851

Copy for publication to the Editors by the

10th of the month

Focus is online at www.thefocusmagazine.co.uk

Focus accepts no responsibility as to the accuracy or content of any advertising or articles published in 'this' magazine neither do they reflect the opinion of members of the Committee.

© Articles published in Focus may not be reproduced without permission.

Focus would like to remind contributors that the deadline for articles is the 10th of the preceding month.

Kindly Note

If the event you wish to advertise falls in the first week of the month, it is advisable to get the details into Focus a month earlier. The magazines are not delivered from the printers until the first of the month, therefore it takes a few days for them all to be circulated throughout the village.

✉ Editors

Village Hall Bookings

To book your local village hall for an event please contact the following:

Northall: Lorna Cabbage Tel: 01525 220361

Eaton Bray: Norman Lee Tel: 01525 222831

Dagnall: Elizabeth Coates Tel: 01442 842550

Edlesborough Memorial Hall: Penny Pataky, Tel: 01525 229358

Police Contact Numbers...

making neighbourhoods safer together

General Assistance (Recommended Number): 101 Emergency: 999

Bedfordshire Police (Eaton Bray)

Leighton Buzzard Police Station/Kathryn Horgan: 01582 473411

Typetalk: 18001 01582 473418

Email: LPT.LeightonBuzzardLinslade&Rural@bedfordshire.pnn.police.uk

Thames Valley Police (Edlesborough, Dagnall & Northall)

PCSO Jackie Dodson Mobile: 07800 703 524

Email: NHPT@thamesvalley.pnn.police.uk

Village Diary November 2015



Weekly

- Mon-Fri (term time) Eaton Bray Pre-school, Eaton Bray Lower School, 01525 220468
- Mon-Fri (term time) Dagnall Under 5's, Dagnall Village Hall, 9.15am - 12.15pm, Mrs Ann Tobin 07816 358342
- Mon-Fri (term time) Edlesborough Pre-School, Edlesborough School, 01525 220431
manager@edlesborough.bucks.sch.uk
- Mon-Thu (term time) Totternhoe Pre-school, mornings, Totternhoe Lower School, Michelle Urbanowicz on 01582 668841
- Mondays Pilates, 10.45am, Totternhoe Memorial Hall, Lisa: 07799 893489
- Mondays (term time) 2nd Eaton Bray Brownies, girls 7-10 years, Edlesborough Memorial Hall, 6 - 7.30pm,
Contact Sandra Counsell 07979 521900
- Mondays Dagnall Community Choir, All Saints Church 7.45 – 9.45pm
- Mondays Weight Watchers, 7pm, Eaton Bray Village Hall
- Mondays (term time) Movement and exercise classes with a dance flavour, Northall Village hall 2-3.30.
Contact Jan 01442 864271.
- Mondays Curtain Call Youth Theatre 5-7.30pm, Eaton Bray Village Hall, Gavyn 01525 220525
- Mondays Curtain Call Theatre Group - 7:30-10:30pm Eaton Bray Village Hall, Sheila -
sdtwinkletoes@yahoo.co.uk
- Mondays KFFPA ISTD Classical Ballet classes, 3+yrs, 4.15pm, Edlesbrough Memorial Hall,
www.kfpa.co.uk
- Tuesdays Line Dancing, 1.30-3p.m., Eaton Bray Village Hall, Lyn Stubbs 220731
- Tuesdays Pilates, 10-11am, Eaton Bray Village Hall, Nicky Roussou 07861 162680
- Tuesdays Totternhoe Baby & Toddler Group, 9.30-11.30am, St. Giles Church Hall, Ruth Allen,
01525 222468 or 07796 265174 or email ruthallen002@gmail.com
- Tuesdays Northall Baby & Toddler Group, 9:30-11:30am, (open in the Summer School Holidays)
Northall Village Hall, Stacey Richmond 01525 222999/07957 607592
- Tuesdays Tap & Ballet Classes, JoAnn Latus School of Dance, 4-8pm, Eaton Bray Village Hall,
01582 620576
- Tuesdays Circuit Training - Edlesborough School Hall, 7-8pm - www.simplesfitness.com
- Tuesdays Coffee Morning, Bring & Buy, Table Top Sale, 10-12noon, Salvation Army Hall,
Booth Place, Eaton Bray
- Weds Cheeky Monkeys Under 5's playtime, 1pm - 2.45pm, Eaton Bray Village Hall, contact
(term time) Rachel on 07789 760007
- Wednesdays Pilates, 7.15pm, Northall Village Hall, Lisa: 07799 893489
- Wednesdays Egyptian Dance Class, 7.30-8.45pm at Eaton Bray Village Hall. Contact: Soraya on
07976 964316 for more details
- Wednesdays Northall & District Age Concern Wednesday Club, 10am - 3pm, Northall Village Hall,
Contact Anna on 07854 230243
- Wednesdays Dynamic Yoga 6.30-7.30pm £5 Eaton Bray Coffee Tavern Keira 07936 693696
- Wednesdays (term time) Caterpillars preschool parent and child group 10:30am to 11:30am, Grace Baptist
Church, Moor End, Edlesborough £1 per family unit, Rebecca Dennis 07920 062248
- Thursdays Yoga, Northall Village Hall, 11.30am-1pm 01525 377542
- Thursdays Baby & Toddler Group, Salvation Army Hall, Booth Place, Eaton Bray, 9.30-11.30am
- Thursdays Keep Fit, Edlesborough School, 8pm Tel: 01582 668735
- Thursdays Jazzercise, 9.30-10.30am, Eaton Bray Village Hall, Angela Veryard, 01525 715208
- Thursdays KFFPA Street dance classes 4+yrs 4pm, Edlesborough Memorial Hall, www.kfpa.co.uk
- Thursdays Box-Fit - 7:30 - 8:30pm, Eaton Bray Village Hall - www.simplesfitness.com
- Thursdays (term time) Central Bedfordshire Children's Centres' Toy Library, 9-9.45am, Eaton Bray (School
Lane) Public Car Park
- Fortnightly
- Fridays Keep Fit class, Edlesborough Memorial Hall 10 - 11am
- Fridays Tap & Ballet Classes, JoAnn Latus School of Dance, 4-8pm, Eaton Bray Village Hall,
01582 620576

Village Diary November 2015



Fridays (term time)	“Little Luvvies” baby ballet classes 10am-11.30am. Contact Emma Whittemore on 01525 376124
Fridays (term time)	Kids Club 6:00pm to 7:00pm Grace Baptist Church, Moor End, Edlesborough (across from the post office) Frances King 01525 229610
Saturdays	Jazzercise, 9.30-10.30am, Eaton Bray Village Hall, Angela Veryard, 01525 715208
Saturdays	Drama Class for Children, 10.35am-12.35pm, Eaton Bray Village Hall, Claire Casey, 07792 508591
Saturdays	KFPA Musical Theatre classes 4+yrs www.kfpa.co.uk, 10am, Edlesborough Memorial Hall
Sundays	Sundays Worship at 10:30am and 6pm Grace Baptist Church, Moor End, Edlesborough (across from the post office). Barry King 01525 229610 or Peter Feben 01525 221048
Last Sunday	Messy Church, 3-5pm at The Salvation Army Booth Place

Monthly

1st Monday	Eaton Bray Parish Council Meeting, 7.30pm, The Coffee Tavern
1st Monday	Eaton Bray W.I. Meeting, 7.30pm. Eaton Bray Methodist Church Hall. Contact Barbara Collier on 01525 221401
1st & 3rd Tuesday	Dunstable & District Orbit (social and charitable) Club meet at Dunstable Rugby Club at 8pm. For details contact 01525 222441 or 01582 755147
1st Saturday	St. Mary’s church, Eaton Bray Coffee Morning & Plant Sale, 10am - 12 noon
1st Sunday	May to September, St Mary’s Church, Edlesborough Open Day, 2-5pm
2nd & 4th Tuesday	TOTS, St Mary’s, Eaton Bray, 2pm
2nd Tuesday	Dunstable & District Local History Society meeting, 7.45pm, Methodist Church Hall, Dunstable (opposite Wilkinson)
2nd Tuesday	Edlesborough W.I. Meeting, 7.30 pm, Edlesborough Memorial Hall
2nd Wednesday	St.Mary’s Ladies Guild, 2pm, St.Mary’s, Eaton Bray
2nd Wednesday	Eaton Bray & Edlesborough Lions Club, 7.30pm, The Coffee Tavern
2nd Thursday	CAMEO Coffee, tea & chat, 10am-12noon, Edlesborough Methodist Church
2nd Saturday	Workshops Dynamic Yoga 9.30-11am £10 Eaton Bray Coffee Tavern Keira 07936 693696
3rd Thursday	Edlesborough Parish Council Meeting, 7.30pm, Memorial Hall
3rd Sunday	Lunch club 11.30 to 2.00pm, Eaton Bray Village Hall, Chris Hewitt 222288
Last Saturday	Coffee Morning, 10-12 noon, Edlesborough Methodist Church

Other Regular Events

1st	Beds Area Narrow Gauge Model Railway Club Meeting, 11.30am-4.30pm, Eaton Bray Village Hall
13th	Leukemia Research Coffee Morning, 2 Dunstable Road, Dagnall 10.30 am. All welcome.
14th	Cafe Community, Eaton Bray Methodist Church, 11am-1pm
17th	Dagnall Over Sixties, 2pm, Dagnall Village Hall, Hugh Grainger talk on “Do Plants Think”
23rd	ELF walk from Eaton Bray church, 9:30am

One Off/Annual/Irregular Events

7th	1st Totternhoe Brownies, Beavers, Cubs & Scout Group Jumble Sale, 11am-2pm, Methodist Church Ashton Square, Dunstable (opposite Wilkinsons)
7th	St Mary’s Eaton Bray Poppy Prom, 7:30pm, Tickets 01525 222283 £12.50 & £10
13th	MacMillan Charity Quiz Night, 7pm, Leighton Buzzard Rugby Club, Tickets £8 each, Sheila 01525 221556
14th	St Mary’s Eaton Bray Christmas Fair, 12-3pm, Eaton Bray Village Hall
14th	Edlesborough Church (on the hill) Floodlighting Event 5-6pm
28th	Festive Coffee morning, 10am - 12:30pm, All Saints Church

Village Diary November 2015

28th
28th
29th

Eaton Bray Academy Christmas Fayre, 12-3pm
Steam in Beds Large Scale Narrow Gauge Model Railway Show, Eaton Bray
Village Hall 10am to 4.30pm - Adults £5.00 Accompanied Children under 16 Free
Community Carol Concert, 4pm, Eaton Bray Village Hall



EATON BRAY PARISH COUNCIL



Please come and help to run your village **BECOME A PARISH COUNCILLOR**

The Parish Council is nine members of the public

We come to each Parish Council Meeting in the Coffee Tavern on the 1st Monday of each month and spend on average around five hours each month advising and helping to run our village.

**At present we have a vacancy – will YOU come and join us?
If yes, please contact the Parish Clerk**

You can also view our website for more details



Heidi Head, Parish Clerk & RFO

Email: clerk@ebpc.co.uk - Telephone/Fax: 01525 221464 - Website: www.ebpc.co.uk
Office Hours: Tuesday/Thursday/Friday 09:30-13:30hrs [messages can be left on answerphone]



Appledown's Rescue Dog of the Month

This is **Gwynesse Harlaw**, an Akita cross aged 3 years. We believe she may have some rough or smooth collie in her. She is a

happy to offer advice and information. Please note that we have restrictions on rehoming dogs to families with children under 7 years of age. Full details of the rehoming process can be found on our website or call the kennels.

very bright dog and is lovely with people and sociable with other dogs. Gwynesse has a condition which means her eyes are quite small and deep-set but does not affect her sight or her good looks! She cannot live in the Dacorum area.

If you feel you could offer Gwynesse or any of our other dogs a loving and secure home please call in at the kennels any day between 10 a.m. and 4 p.m. Our staff are

**Appledown Rescue and
Rehoming Kennels
Harling Road, Eaton Bray
Beds LU6 1QY**

Call 01525 220383 or e-mail:
appledown.kennels@btinternet.com
Website: www.appledownrescue.co.uk
Follow us on Facebook!
Reg Charity No. 1116848



Advertising your business in Focus

With autumn now upon us, it is time to start planning the magazine for 2016. The popularity of Focus continues and we will have delivered over 2500 copies, one to each household in Eaton Bray, Edlesborough, Dagnall and Northall, ten times once again this year (25000 copies in all!) In addition, the magazine is accessible online (www.thefocusmagazine.co.uk). This will provide extensive local advertising for your company, products or service, anytime, anywhere! Please contact Sally Siddons on 01525 221733 or email sallysid@hotmail.com if you are interested.

FOR SALE

Guitar, Acoustic electric
Applause Ovation
Good condition
£68 for quick sale
Tel : 07734 111654

FOR SALE

PIANO
Upright
Free to collector
Tel: 01442 843577
(Dagnall)

British Legion Remembrance Service

Sunday 8th November 2015

Edlesborough War Memorial 10.45am

CLOSURE OF A4146 FROM NORTHALL TO PEBBLEMOOR JUNCTION

This year's annual service of Remembrance will take place at Edlesborough War Memorial at the top of the hill by the church on the A4146. Please come and join us. The main road (A4146) will be closed for the service from approximately 10.30am until 11.30am with a diversion in place from the junction with Pebblemoor, along Pebblemoor and Edlesborough High Street, Eaton Bray High Street, and up Northall Road to join the main road in Northall. Edlesborough High Street will also be closed from the junction with Pebblemoor by the Memorial Hall to the junction with the A4146

Residents living on Edlesborough High Street above the Memorial Hall and along the closed part of the main road should be aware that it will NOT be possible to access the main road by car at the junction by the church during this time as there will be people standing in the road, and so if it is necessary to use your car at this time please drive away from the junction towards the nearest point on the diversion route.

Services at St Mary's Church

SUNDAYS : **8.00am** HOLY COMMUNION
 10.00am PARISH SUNG HOLY COMMUNION

On Third Sunday of each month:

10.00am – WORSHIP FOR EVERYONE a shorter, less formal service for families. (For anyone wishing to attend a service where Holy Communion is offered, there is a Family Communion at 10.30am at All Saints' Church, Dagnall, where visitors are assured of a warm welcome).

WEEK-DAYS:

Tuesday: 2.00pm TOTS (Tots on Tuesdays) (2nd & 4th Tuesdays)

Wednesday: 10.00am Holy Communion

EVERYONE WELCOME AT THESE SERVICES



1st Eaton Bray and Edlesborough Scout Group

Vacancy

Scout leader urgently required

Our thriving group urgently needs a Scout leader to help lead our active troop of Scouts. Without a leader our Scouts cannot continue to meet regularly.

Can you help make a difference?

What if I don't have that much spare time?

Volunteering with us is easy and fun – we'll make sure you're properly trained and supported. We need a leader for our weekly meetings but there are helpers, an active committee and young leaders who will work with you, share responsibility and support the activities.

Are there any age restrictions on helping out?

As long as you're over 18, you can help out as an adult volunteer in Scouting. There is no upper age limit for adult volunteers.

Many of our helpers and leaders are parents of our youth members because they've seen firsthand how Scouting benefits young people and want to give something back. It's also potentially a chance to spend more time with your children and learn new skills.

Please Contact:

Jonathan Kent - 1st Eaton Bray and Edlesborough Scout Group Committee
or Mark Hewitt - Group Scout Leader for more information
ebescouts@cplus.co.uk

A Letter from Rev'd Coralie



Vicar: Coralie McCluskey

The Vicarage, 11 High Street, Eaton Bray - Tel: 01525 220261

Honorary Assistant Priest: Revd John Heffer

Reader: Gordon Gray (220136)

Church Warden: Catherine Hayden (220527)

Email: admin@stmaryseatonbray.org.uk

www.stmaryseatonbray.org.uk

*The fires burn and the kettles sing,
and earth sinks to rest until next spring.*

Elizabeth Jane Coatsworth American author and poet

November is the most disagreeable month in the whole year

Louisa M Alcott, Little Women

Autumn is with us, the leaves are changing colour and beginning to drop, bird and squirrel activity in the Vicarage garden is no longer frantic, one holly tree is covered with red berries but the other has none and the productive part of the garden is bedraggled. It is an annual reminder that winter is just around the corner with colder weather, shorter days and dark nights. Time to hibernate.

The onset of autumn and winter can bring many changes to the lives of those who live in our communities. Children walking or cycling to school are especially vulnerable as the days shorten and the 30mph signs seem to have little effect on the cars that drive through the villages. The winter can also cause misery, avoidable illness and even death for many older people. Age UK research found that 35% of those over 65 were concerned about keeping warm at home during the winter and 39% that they felt lonely with one in five saying that they felt forgotten as a result of this. Let's be aware of our neighbours, especially those who live alone this winter.

A Prayer for November

Come Lord Jesus and abide with us. Be with us in the evening hour and protect us through the dark hours of the night. Comfort all who are in danger and those who watch and wait. Help us to be still and to hold to your promise that in the end your purposes will be fulfilled, our anxieties dispelled and our fears calmed, in the name of him whose love casts out fear, Jesus Christ your Son, our Lord. Amen.

Remembrance Sunday

On Sunday 8th November at 10.50am we gather at the Edlesborough War Memorial to remember those who died in the two world wars and more recent conflicts.

Coralie

Edlesborough Parish Council News

Including Edlesborough, Dagnall and Northall



Remembrance Day Service

The Act of Remembrance will take place at Edlesborough War Memorial 10:30am – 11:30am on Sunday 8th November

Dogs on Dagnall Allotments

Following many complaints about dogs fouling on Dagnall allotments the Council requests that dog walkers PLEASE:

- KEEP dogs on a short lead.
- DO NOT allow your dog to stray onto the allotment plots.
- ENSURE you clean up after your dog.

Thank you.



Street Lights

Following the success of Phase 1 of the Parish Councils new streetlight program the Council have now placed an order to replace all the existing SOX (orange) lights in Dagnall and Edlesborough with the new LED lights. This means that any SOX (orange) lights which are currently faulty will not be repaired instead they will be replaced with the new LED lights.



Please remember to report faulty streetlights to the clerk who will then try to ensure these are replaced as a priority when the new installation of lights begins.

Hedge Cutting

Following concern raised about hedge cutting disturbing nesting birds the Council have agreed to amend their routine hedge cutting program to ensure that hedges are not cut between 1st March and 1st August, following the NFU/EU and RSPB guidelines.

Please would Parishioners ensure that their own boundary hedges and trees do not cause obstruction to the roads, footpaths and pavements in and around the villages.

New Trees on Edlesborough Green

The EDaN Beautification team are currently finalising a tree planting plan

for Edlesborough Green. Any parishioner wishing to sponsor a tree should contact the Parish Clerk.

Pavilion

The council have recently carried out repairs to the damaged porch roof at the front of the Pavilion on Edlesborough Green. To help combat further damage/vandalism anti climb paint will be applied to the edge of the roof.

Please could parishioners also ask their children to refrain from playing football in front of the pavilion as this results in numerous costly repairs needing to be carried out to the guttering etc.



Speedwatch

The EDaN Traffic Management team are looking for volunteers to help man their Sentinel device. If you have an interest in slowing down traffic in the villages or are concerned about Road Safety please contact Louise Turner on 01442 834123 or by email at louisefanthorpe@yahoo.co.uk

Edlesborough Parish Council Meetings

The next Edlesborough Parish Council meeting will take place in Edlesborough Memorial Hall on Thursday 19th November 2015. The meeting will commence at 7:30pm.

All parishioners are welcome to attend and may ask questions, raise issues and give suggestions during the Open Forum.

The full minutes of the Parish Council meetings are normally available to view on the website or from the Parish Clerk.

Contact Information

Clerk to Edlesborough Parish Council:

Clerk: Penny Pataky 01525 229358

Email: clerk@edlesborough-pc.gov.uk

Website: www.edlesborough-pc.gov.uk

Facebook:

www.facebook.com/EDANParishCouncil



UNICORN WINDOWS LTD

“WHERE QUALITY & SERVICE ARE NOT A MYTH”

www.unicornwindows.co.uk

Tel: 01525 854272



Unit 3 Youngs Industrial Estate, Stanbridge Road, Leighton Buzzard

comput@mation
computer support & services

Computer Support for Business & Home

Problem Solving:

Virus & Spyware Removal
Internet & Email Assistance
Fault Diagnostics
Repairs & Upgrades
Slow Running PC's

Sales:

Desktops, Laptops & Tablets
Printers & Peripherals
Software

Services:

PC, Mac & Linux Support
Wired & Wireless Networks
Data Recovery
Install & Set-up
Health Checks

On-site Visits:
Office Hours & Evenings
by appointment

For friendly advice call John Wallace: 07968 536068 or 01525 261381
Email: john@computamtion.co.uk
Web: www.computamtion.co.uk

Computamtion Services Ltd - Est.1999 with over 25 years experience
9a Lower Way, Great Brickhill, Buckinghamshire, MK17 9AG

Carpet & Upholstery Cleaning

Professional & Local

All work guaranteed - not happy, don't pay

Powerful equipment means drier much
quicker than other methods

100% Guaranteed no chemicals left in carpet
when dry therefore will not easily resoil
& perfectly safe for children & pets

Recommendations account for 90% of my work

Absolutely no hard sell

Telephone Colin for a Free Quote

DEEP-CLEAN

01525 851 811

www.deep-cleaners.co.uk

Email: colin@deep-cleaners.co.uk

EDLESBOROUGH SURGERY

11 Cow Lane Edlesborough

Enquiries - 01525 221630 Appointments - 01525 220333

www.edlesboroughsurgery.co.uk

Dr J R Bell, Dr Heather Counsell

Dr Tisha Patel

Dr Stephanie Johnston, Dr Kirsten Riemer

Friendly village Practice offering a wide range of health services including coils/implants, minor surgery, travel advice, in house blood tests, on-line appointments and repeat prescription ordering. Four Nurse Practitioners offering acute clinics with same day appointments. Also, midwife, health visitors in attendance. Local District Nurse Service.

Long established training Practice with a rotation of qualified doctors.

EDLESBOROUGH PHARMACY

01525 223181

Pharmacist – Mitul Patel

Friendly reliable professional service at the pharmacy

All doctors/dentists/veterinary and hospital prescriptions dispensed

Professional advice always available

Herbal/Homeopathic products

Special Orders on request

Stagecoach Theatre Arts
 An hour to sing, an hour to dance, an hour to act... A lifetime to Perform!

Please contact the Principal, Wendy Ashman
01442 823181
 leightonbuzzard@stagecoach.co.uk
 www.stagecoach.co.uk/leightonbuzzard
 www.facebook.com/stagecoachleightonbuzzard



SING! DANCE! ACT NOW!



Theatre Arts Schools
Stagecoach



MMH
Plumbing & Bathrooms



City & Guilds
 Qualified

- Full Bathrooms Installations inc Design, Supply, Tiling
- All General Plumbing work from : Leaking Showers Dripping Taps • Toilets not flushing • Radiators • Drains

Call Mark for a **FREE** no obligation quote **01525 220994**
 All work fully insured and guaranteed. **07842 653832**

Barry Cato
Motor Repairs

— Est. 1981 —

Servicing, repairs and MOT's arranged
Workshop at:
 r/o Norfolk House Farm, Harling Road
 Eaton Bray, Dunstable, Beds, LU6 1QY
Tel: 01525 221681 (workshop)
07836 650015 (mobile)

30 Years Experience
Domestic & Commercial Security



- Burglar Alarms**
Redcare Monitored Systems
Intercoms
CCTV
Access Systems
Locks



CERTIFICATE NO. NACG/2113

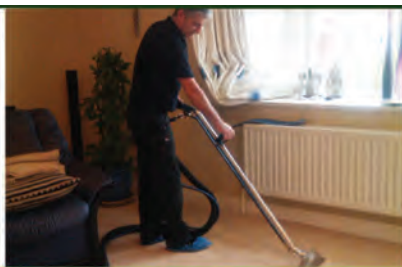
Quality Installations – Competitive Prices
Insurance Approved **Free Surveys**

AAA SECURITY

01525 378222

Email: sales@aaasecurity.co.uk
www.aaasecurity.co.uk





Local family run business - Not a franchise

All chemicals used are Eco-friendly, non-toxic, non caustic and non allergenic
All work guaranteed and fully insured

All products are Child, Pet and Pregnant Safe

- Ovens & Hobs
- Extractor Hoods
- Microwave Ovens
- Agas
- Fridges
- Carpets
- Rugs
- Upholstery
- BBQs
- Freezers



☎ 01525 22 19 22 or 0800 122 3393

🌐 www.ecotechovenandcarpetcleaning.co.uk

@ info@ecotechovencleaning.co.uk

Dominic Woolcott

Painter & Decorator



- Internal & External
- Plastering & Coving
- Insurance Work
- 20 Years Experience
- Competitive Rates

**For a professional job call:
01525 229682 or 07747 042879**

P. DYER ELECTRICAL

For all your Electrical & Testing & Inspection needs

- Re-wires
- Testing & Inspection
- Security Systems/Lighting
- LED & Low Energy Lighting
- Decorative Lighting
- PAT Testing
- Fuse Boards
- Fault Finding/Repairs

Fully insured, Part P registered, all work guaranteed.
Fast, friendly, reliable, local electrician. For a free,
no-obligation estimate, call Paul on:



Tel: 01525 222109
Mobile: 07850 682815



David John Harris



(Established 1992)

All Fencing Work • All Gates • Paving • Patios
Driveways • Shingle • Hedge Setting and Cutting
Grass Cutting • Turfing Specialist • Exterior
Painting Service • Sheds Small Building Work
Trees & Shrubs Supplied

Tel/Fax: 01525 221745
Mobile: 07889 143713

WASHING MACHINE REPAIRS

ALSO
DISHWASHERS, TUMBLE DRIERS,
AND ELECTRIC COOKERS



Call
ANDERSON D.R.S.

01582 665764

www.andersondrs.co.uk
SALES AND RENTALS AVAILABLE



GYM & TONIC

WANT TO GET FIT, HAVE A
HEALTHIER LIFESTYLE & IMPROVE
THE WAY YOU LOOK & FEEL?

The following can be provided in our
Gym in Edlesborough or in your home

- * A Health & Fitness Consultation *
- * Personal Training * Massage *

Ruth Anderson Dip. PT & ST, Member of: Inst of Sports
Therapists & Register of Nutritional Therapists

Tel:01525 223074 Mob:07812 163979



For all your painting & decorating requirements
 Domestic and Commercial
 call Max for a free estimate with no obligation
maxbro@btinternet.com

Abbott Flooring

- Carpet & Vinyl
- Laminate & wood flooring
- Domestic & commercial
- Supply, fitting & adaption
- Next day delivery
- All work guaranteed
- Free no obligation quotes
- No job to small

We provide a friendly, professional service at very competitive prices. If you require us to supply & fit or you just need some flooring fitted then give us a call.

Telephone 01525 220249
 Mobile 07958 244536



High Street Hair

66 High Street , Eaton Bray, Nr Dunstable, Beds. LU6 2DP

01525 221252

www.highstreethair.co.uk

Monday	Closed
Tuesday	9 - 6
Wednesday	9 - 6
Thursday	9 - 8
Friday	9 - 8
Saturday	9 - 5

A Professional modern salon, Providing
 Quality hair & nails services for the whole family.



JESSICA



TIGI®

think car, think...

smartAUTOGROUP



Established locally for over 10 years

Car servicing, M.O.T & repairs
Bodywork & maintenance
Mobile car body repairs
Accident & vandalism damage
Alloy wheels, scratches, dents, stone chips & scuffs
Fully equipped bodyshop & workshop
Complete diagnostic equipment
Dealer trained master technicians
Genuine parts



Competitive pricing – up to 50% cheaper than main dealers!

£10 off with this advert

Work Guaranteed • Free Vehicle Collection & Delivery • Customer Pick-Up & Drop-Off

Call us on **01582 664772** or visit www.smartautogroup.co.uk

Units 17 & 18a, Icknield Way Farm, Tring Road, Eaton Bray, Dunstable LU6 2JX



Bathrooms, Design & Installation

Tiling • Heating • Powerflushing • Taps • Leaks

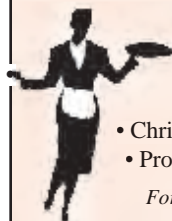
Call Outs • Free Estimates Given



01525 222145



07971 559185



Patricia's Cuisine

Catering For All Occasions

- Buffets, Dinners •
- Christenings, Weddings, Funerals •
- Promotions & Business Lunches •

For Enquiries & Menu

Meadside Farm, 104 High Street,
Eaton Bray, Bedfordshire, LU6 2DP

Telephone: 01525 222174

P.J.BRINKLOW

Electrical Contractor

01525 220469

07860 781330

**43 Pebblemoor
Edlesborough**

pinstripes signs
pinstripes graphics
pinstripes clothing

01525 220485
07973 167779

BUSINESS CARDS

www.pinstripesigns.co.uk

find us on facebook
pinstripes signs graphics clothing

Mark Janes Contracts

**Felt Roofing - All Roofing Repairs
and Property Maintenance**

FREE ESTIMATES



t: 01442 877528

m: 07841 343470

e: mark.janes3@btinternet.com

Established 25 years

*Approved Contractor
for Local Authorities*

For all your building needs look no further



BRIGGS



BUILDING & CARPENTRY SERVICES

Established 1981

For a professional, friendly service call:

(01525) 221767

(07970) 214439

Domestic & Commercial

Extensions
Renovations
Conversions
Alterations

New Builds
Roof Repairs
Kitchens
Bathrooms

Patios
Driveways
Decking
Garden Walls

Mini Digger, Skip Loader and Dumper Hire

All Work Guaranteed

Free Estimates

Macmillan Coffee Morning in Dagnall

Sue Cawdell and Chris' Yorke would like to thank everyone who supported the Macmillan Coffee morning held on 25th September.

We had a full house and raised the magnificent sum of £350.00. Hope to see you all again next year!

Pump Hunt for Sewage Station Owners

Thames Water to take on the responsibility of 4,000 sewage pumping stations from property owners and managers

Utility will take over electricity and maintenance costs under new legislation, potentially saving customers thousands of pounds

Firm appeals for help tracking 1,800 'missing' stations

Thames Water is appealing to customers to help identify privately owned sewage pumping stations.

The utility company, which serves 15 million customers in London and the Thames Valley catchment, will take responsibility for around 4,000 private pumping stations in October 2016, but needs to track down a further 1,800 which are currently "off its radar".

New legislation means that sewage pumping stations, which power wastewater away from properties and out into the public sewer pipe network, which are currently owned and maintained by customers will become legally owned and operated by the Thames Water.

The pumping stations are found in all shapes and sizes, and can be in places where there are a number of properties needing to connect to the public sewer network. Customers will know they have one as they'll be paying to maintain and power them.

Jerry White, of Thames Water, said: "This is really good news for customers. We'd urge anyone who thinks they may have one to get in touch so we can check they are eligible for the transfer of ownership. In some cases, as well as electricity savings, maintaining and replacing pumps can cost thousands of pounds so it's an excellent deal for them."

"We believe we know where most of the stations we need to take over are, but really need help to find the other 1,800. Please get in touch if you think this applies to you and we can take on the responsibility forever."

Anyone who has, or thinks they may have, a private pumping station can make Thames Water aware at thameswater.co.uk/pumphunt

A sewer pumping station is likely to be 'adopted' by Thames Water if it:

- was in use before July 2011 (and)
- serves a single property, and is outside the property boundary (or)
- serves two or more properties

More information is available at: www.thameswater.co.uk/pumphunt

Eaton Bray Parish Council

Highlights of the Meeting Minutes of the Eaton Bray Parish Council Held on Monday 7th September 2015 from 7:30pm at the Coffee Tavern

Central Beds Council (CBC) – Councillor Ken Janes

Website: www.centralbedfordshire.gov.uk

Customer Services: 0300 300 8302 / Email: customers@centralbedfordshire.gov.uk

- Planning Application CB/15/022260: The PC have been informed by CBC that for this type of application in a rural setting an EIA survey is not legally required to be carried out.
- 30mph signs – Bower Lane/Harling Road. New 30mph/NSL (national speed limit) signs were erected, however they have been erected in their original position and not in the agreed location of further into Harling Road (around bend) to ensure the junction with Bower Lane/Harling Road/Dunstable Road is within the 30MPH zone. Cllr. James and PC to action accordingly.
- Illegal Traveller Camp: The PC informed Cllr. Janes of their disappointment at the lack of response/advice given by CBC to the Clerk when experiencing the illegal traveller camp set up over the August bank holiday weekend. Although messages were left with CBC to contact the clerk to offer help/advice on how to deal with this matter, no response was ever received.

Bedfordshire Police:

News from the team: If you wish to contact your Local Policing Team then please call 01582 473411 or email LPT.LeightonBuzzardLinslade&Rural@bedfordshire.pnn.police.uk. **Non-emergency call 101 / All emergencies 999**

Central Bedfordshire - Dog Control Orders:



The PC contacted CBC for more clarification regarding the Dog Control Orders implemented by them. They confirmed that dogs should be kept on leads in the actual play/sports facility area, i.e. play area/marked pitches; however dogs can be let off leads on the open spaces around these areas as long as the dog is kept aware from specific areas within the open space/recreation ground.

- No dogs allowed at all in/on children's play areas. Failure to keep dogs out/off these areas will incur a warning/fine.
- Dogs should not be allowed off lead where marked football pitches are located. However out of football season (i.e. May-August) when the pitches are not marked dogs can be let off leads to run around. During the football season dogs can be allowed off their leads but should be kept off the actual play/pitch areas; failure to do so will incur a warning/

REPORTED CRIME – YEAR TO DATE

RECORDED CRIME		
Crime Type	01/08/14 – 31/08/14	01/08/15 – 31/08/15
Violence against the Person	4	2
Sexual Offences	0	0
Robbery	0	0
Domestic Burglary	1	0
Burglary Other	2	0
Vehicle Crime	2	0
Other Theft	2	2
Criminal Damage	4	0
Drugs	0	0
Other Notifiable Offences	0	1
Total	15	5

ASB INCIDENTS		
Anti-Social Behaviour	01/08/14 – 31/08/14	01/08/15 – 31/08/15
Total	4	12

Eaton Bray has had 12 reports of anti-social behaviour this month.

- (1) 1x youths playing loud music
- (2) 4x off road motor bikes
- (3) 1x neighbour dispute
- (4) 1x youths at skate park smoking
- (5) 3x abandoned vehicles
- (6) 1x noise complaint
- (7) 1x encampment

fine.

- Dogs must be put on a lead if causing a nuisance to other ground users. Failure to do so will incur a warning/fine.
- No dog fouling at all times. Failure to do so will incur a warning/fine.
- On land owned by Eaton Bray Parish Council, the PC can make the final decision as to whether a person using the open space/recreation ground is fined for failure to follow the above guidelines.

Neighbourhood Plan: Letters were delivered to all Eaton Bray properties.

Total responses received = 41; In favour = 40, Against = 0, Undecided = 1.

The PC are to set up a steering group to prepare for a Neighbourhood Plan and will be emailing all those residents who expressed an interest in joining a working group to attend an initial meeting on 28th September next at The Coffee Tavern.

Village Hall - Cheeky Monkeys: The PC was informed that the Village Hall Committee would not review the costs for the hiring of the hall to this village community service. The PC were very disappointed by the Village Hall Committee's decision and the PC's Village Hall representative is to make an appeal to the committee that they re-consider their decision and offer more support for this voluntary run group which offers a valuable lifeline to local parents/carers in the village, by reviewing their charges.

Illegal Traveller Camp – Mill End Close: The PC was made aware of a traveller camp set up on their land on Friday evening (28/08/15). On Tuesday (01/09/15) the Parish Council completed and filed all the necessary paperwork with the courts for eviction from the land. Notice to evict was served to the travellers on Wednesday (02/09/15) and at 3:56pm the PC received confirmation that they had vacated the land. I am sure all residents will agree how quickly and efficiently the Parish Council acted in this matter.

Next Eaton Bray Parish Council Meeting

Monday 2nd November 2015 from 7:30pm at The Coffee Tavern (1st floor)

Parish Council Website: www.ebpc.co.uk

For full detailed copy of the minutes for Eaton Bray Parish Council please visit the Parish Council website.

A hard copy of minutes can also be viewed on the Parish Council's notice board at The Coffee Tavern.

✉ Heidi Head, Parish Clerk & RFO

Email: clerk@ebpc.co.uk - Telephone/Fax:

01525 221464 - Website: www.ebpc.co.uk

Office Hours: Tuesday/Thursday/Friday 09:30-13:30hrs [messages can be left on answerphone].

Follow Eaton Bray Parish Council on Facebook and Twitter. Keep up to date with what is going on in the parish.

The Salvation Army, Booth Place, Eaton Bray Weekly Activities



Sunday

Footprints (Sunday School) 9.45-10.45am

Morning Worship 11am

Messy Church 3-5pm

(Last Sunday of the month)

Songs of Praise 4pm

(3rd Sunday of the month from May to Dec)

Tuesday

Coffee Morning

(Alternate weeks) 10-11.30am

Music practices (all welcome) 7.30-9pm

Wednesday

Home League 2.30-3.30pm

(Ladies Mtg but all welcome)

Champions Challenge Club *(term time)*

(Ages 5-10 years) 5.45-6.45pm

Thursday

Parent and Toddler Group

(Term time) 9.30-11.30am

Sewing & Craft Bees

(2nd Thursday of month) 7.45 pm

Ladies Fellowship

(Last week of month) 7.45pm

For further details please call Envoy Hilary

Chadwick. T:01525 222087 / 07932 057490

E: hilary.chadwick@salvationarmy.org.uk

W: www.salvationarmy.org.uk/eaton-bray

Edlesborough School



enjoyed visiting all the children at home and meeting all their families and pets! It is a very special thing to spend time with the children at home and we thank all their families for welcoming us into their homes. . The children attended part time for the first week and are now enjoying full days at school and arrive each morning with a big smile in their face ready to enjoy the day.

The children are enjoying a range of exciting activities in both our

As the New Year begins at Edlesborough School we welcome all the new reception children into the Reception class.

Mrs Freed, Miss Duffin and Mrs Sykes

inside and outside learning areas and have settled in beautifully. We wish them every success in their first very important year at Edlesborough School.



Town Farm ART SHOW

Perfectly timed for that special Christmas gift!

Paintings, Illustration
Ceramics, Woodcraft
Woodcarving, Jewellery,
Egyptian quilts, Sculpture

www.townfarmartshow.blogspot.com

Mulled wine, mince pies & Christmas cake
in aid of Rennie Grove Hospice Care

ONE WEEKEND ONLY
Friday 27 - Sunday 29 November
10am - 4pm

6 Town Farm, Cheddington, Nr Tring, LU7 0TT
PLEASE PARK ON HIGH STREET - NOT IN TOWN FARM

Free entry



EDaN Beautification Team

Tree Planting Scheme

Sorry – no new daffodils this year. We have now planted 10,000, with the considerable help of the Community Payback Workers, and are taking a year off! ... instead we are planning a programme of tree planting, with new trees on Edlesborough Green to ultimately replace the ash which are in trouble, also silver birches on the corner of Cow Lane, with a bench – handy for the bus stops!

If you, or your organisation, would like to sponsor one of our trees, ranging from

mighty oaks to pretty flowering cherries, we would love to hear from you. (Approx. price £150 according to variety and size). Please contact Christine Yates - chris@brooklyns.org.uk or Tel: 01525 220739 for details.

PS: Remember, Remember 14th November for the Floodlighting Event at Edlesborough church (on the hill), supporting Children in Need.

Details on page 42.

Edlesbray Leisure Fellowship (ELF)

Hello everyone,

When you read this, autumn will really be here with all its glorious colours to enjoy, clocks will have been put back an hour, darker evenings will have begun. How very quickly this year is passing.

Our meeting at the Coffee Tavern on September 17th was a happy one. During the meeting, Val asked those present to begin thinking about outings for the group in 2016, also to pass on that message to other members who were absent.

The walk which took place on the bright sunny day of September 28th, was led by Alan. Starting at the Wyvale Garden Centre at Great Gaddesden, the group headed south following the River Gade, through the old Watercress Beds to cross Nettleden Road and up into Heizdins Wood, turning right in around ¾ mile to join the footpath coming down from Potten End. They re-crossed the Nettleden Road to walk uphill into Highpark Wood. From here, the group were able to see and enjoy fantastic views across the valley to Potten End. They then continued to walk across fields to Pipers Hill and on to St.Margarets, turning right to walk down-hill back to Great Gaddesden,

through the churchyard and back to the starting point. A distance of 4 miles was covered. At the end, the group enjoyed refreshments at the Garden Centre Café. Thanks go to Alan for arranging this great walk.

We look forward to our next meeting at the Coffee Tavern on Thursday November 26th. It will be the Group's annual Sherry and Mincepies meeting organised by Val and Alan. Other business will also be discussed. All are welcome to come and see what a friendly group we are.

Also, on Thursday December 17th, we shall be having our Christmas lunch out. We look forward to that as well. No details are available at present but any of the E.L.F. events are displayed in the north porch of the Eaton Bray Church.

A report on the October walk will appear in the December issue of Focus.

November Dates

Mon. 23rd Walk from Eaton Bray Church at 9.30a.m.

Thurs.26th. Sherry/mince-pies at Coffee Tavern 10.30a.m.



EDaN Community Transport

This service is available for residents in Edlesborough, Dagnall and Northall who are struggling with local public transport. We have a team of volunteer drivers from these 3 villagers who are willing to give up their time to help others in need of this service.

These drivers provide a door to door service, eg, they will take you to your appointment, wait for you and then return you home. Sometimes this involves a wait for several hours for some of these drivers and we are very grateful for the service they provide.

We only charge the cost of the fuel and parking charges if applicable. The mileage rate we are using is 40p per mile and we have £1 admin fee to help with insurance etc. Some charges may be refunded for certain people, please enquire for further details if you need more information on this. Our drivers only receive this cost of their fuel, they give their time for free!

Ideally we need 48hours notice of a trip, but there are emergency medical

appointments that we may be able to do a shorter notice if required.



We can take you shopping, to visit friends, the trip doesn't have to be medical, although this is our first priority if we were short of drivers.

During the heavy snow we were very grateful to Peter Williams (our co-ordinator) and Viv Hill in particular, who still continued to get people to their destinations in spite of the appalling weather.

There are some truly remarkable people living in our villages and we are very lucky to have them.

If you would like to know any more about Community Transport, please give me a call, Kathy Bovington on 01442 842796 or 0779 0537032. Alternatively, if you would like to book a trip, please call Peter Williams our co-ordinator on **01442 842506** who will arrange this for you.

✍️Kathy Bovington
EDaN Buses and Transportation Team



Thank You

The World's Biggest Coffee Morning held in St Mary's Church on Friday September 25th was another huge success and we would like to thank everyone who supported in any way. I would like to especially thank the magnificent team of helpers who made it happen, and everyone who helped with the clearing and furniture removal before and after. Also many thanks for all the donations of cakes, books, bring & buy etc. The total raised is over £779 so far, a great result! This will be put to very good use supporting anyone affected by cancer and their families.

Thank you to everyone.

✍️Sheila Banks

everyone who supported in any way. I would like to especially thank the magnificent team of helpers who made it happen, and everyone who helped with the clearing and furniture removal before and after. Also many thanks for all the donations of cakes, books, bring & buy etc. The total raised is over £779 so far, a great result! This will be put to very good use supporting anyone affected by cancer and their families.



Dunstable & District Local History Society

Tuesday 10 November, 7.45pm
Family History and Transportation

Documents about prisoners transported to British colonies are providing some unexpected revelations about our ancestors.

Andy Amos gives the details.

Methodist Church Hall, Dunstable
Visitors always welcome £2

Eaton Bray Methodist Church

Geoff Bocutt, our first preacher in September, focused on new beginnings, coming to terms with the past, letting go and finding the courage to move forward with God's support. Our café worship on the second Sunday was led by Peter Baker, who helped us to reflect on the Messiah and our relationship with him. Our September Communion Service took place on 20th September under the leadership of Nigel Wright, our Minister, who gave an inspiring sermon on Christian love and the ways in which we can effectively show love to those around us. Our Harvest Festival, on the last September Sunday, was an absolute delight. The church was bright with lovely floral displays, sheaves of corn and gifts of produce. A large congregation enjoyed a

lively address by Steve Jones, who began with an intriguing scientific experiment and went on to remind us to be good stewards of God's bounty but also to trust in his will to provide when we have failed to look after our planet well enough. A delicious Harvest Lunch followed and we would like to express our gratitude to the Chef, Dave Wallis, who so kindly gave his time and skill to prepare such a feast.

Dates for your Diary:

Café Community

Saturday 14th Nov 11am - 1.00pm

There will be a Craft Stall with handiwork at this event.

Coffee Morning and Craft Sale

Saturday 5th Dec 10am – 12 midday

Northall & District Age Concern

Charity No. 293080

Northall & District Age Concern Wednesday Club Committee and Members would like to thank all the businesses that supported us with donations for the Harvest Auction. We also want to thank all the individual donors and generous bidders who contributed to the event.

TOGETHER WE RAISED £2150. THANK YOU ALL.

Ashridge Golf Club

Café Masala

Colin, Deep-Clean

Eaton Bray Shop

Edlesborough Flowers

Edlesborough Post Office

Garden Scene

Clair & Keith, Giblin Estate Agent

Grove Farm

Grove Lock

Happy Valley

High Street Hair

Hines Butchers

Icknield Autos

J.G.S. Metalwork & Son

Janes

Kate Meridith, Revive

Lantmannen/Unibake

Luton Town Football Club

Mead Open farm

M K Dons Football Club

Old Bank House Dental Practice, L/B

Majestic Wine, L/B

NG Autos

NMJ Service Centre

Silver Arrow Archery

Swan Pub, Northall

St Judes Clinic, L/B

Thai Traditional Massage for Ladies

Hill Farm & Orchard, Slapton

Millbrook Golf Club

The White Horse

Travellers Rest

Westrope Bros

The logo for AGE Concern, featuring the word 'AGE' in a bold, sans-serif font above the word 'Concern' in a smaller, cursive font.

Friends of Bucks

The logo for Age UK, featuring the word 'Age' in a stylized font above the word 'UK' in a bold, sans-serif font.



LUTON &
DUNSTABLE
HOSPITAL
CHARITABLE FUND

Light up a Life this Christmas

The Luton and Dunstable Hospital invites you to join in with their *Light up a Life* campaign this Christmas!

You can buy a *Light* on our Christmas Tree as a gift for someone special or you can dedicate a *Light* in memory of a loved one. All proceeds will benefit the Neonatal Intensive Care Unit Parents' Accommodation; which will provide a home from home for those parents' who want to stay at the hospital overnight so they can be near their baby.



Lights are just £5 each or 3 for £10. If you buy a light as a gift for someone, they will receive a card with your special personal message and if you buy one in memory of a loved one, you will receive a letter of dedication.

The giant tree will twinkle proudly outside the hospital for everyone to see. Lights can be purchased any time up until Christmas and will be put on the tree, but the switching on ceremony will be on Wednesday 2nd of December at 6pm at the front of the hospital where there will be festive music provided by the Hadrian Academy school choir, and refreshments in the warm afterwards... everyone is welcome!

To buy your *Lights* please call the Fundraising Team on **01582 718 289** or visit www.ldh.nhs.uk/fundraising and download a form.

Thinking of Selling or Letting?



Our success is built on our reputation of excellent customer service.



www.christopherpallet.com



Offices in Edlesborough, Wendover & Aylesbury

65 Moor End, Edlesborough, Bucks, LU6 2HN ♦ T 01525 222333 ♦ F 01525 222042 ♦ E edlesborough@christopherpallet.com

IRON OUT

Complete Laundry Service
Shirt Service
Duvet Cleaning
Ironing

Free collection & delivery from home or office

01582 667332 / 07885 320042

Email: ironout@aol.com

D NICHOLSON PLUMBING REPAIRS and INSTALLATIONS

NO JOB TOO SMALL

- Emergencies • Free Estimates
- No call out charges



Dave Nicholson

MOBILE: 07976 975604

HOME: 01525 872335

City & Guilds
Qualified

R.J.O'CONNELL BUILDING SERVICES

EXTENSIONS, PATIOS,
DRIVEWAYS, ROOF REPAIRS
AND PROFESSIONAL
DECORATING SERVICE

TEL: 01296 681323

MOB: 07855 236726

Will Kimberley Garden Services 01442 255784

Phone for a free no obligation written estimate
wkgardenservices@btconnect.com

- High hedges a speciality
- Fences erected and repaired
- General garden tidy up's
- In fact any job in the garden!

Make a Will

AND LASTING POWERS OF ATTORNEY

Protect Your Home 100%

YOU DECIDE, who is to run your affairs, who gets what, guardians etc, not the State.

MINIMISE RISK of Inheritance Tax and the disinheritance of children.

Best Price Guarantee

from specialist Solicitors and professional Will Writers since 1999

FREE HOME VISIT

For a **DAYTIME** or **EVENING** appointment call

01525 220644

www.wisechoicewills.co.uk

from
CARE FEES
and
PROBATE COSTS



Will Trusts & Probate Practice

A wise choice

MAKING A WILL HAS NEVER BEEN EASIER

ASPECT

YOUR LOCAL ELECTRICIAN
TOTTERNOE
OVER 20 YEARS EXPERIENCE

ELECTRICAL

CONSUMER UNIT UPGRADES (FUSE BOARDS)
LIGHTING - INTERIOR, EXTERIOR & SECURITY
REWIRING
NEW INSTALLATIONS
TESTING & INSPECTION

ALL WORKS TO CURRENT WIRING & BUILDING REGULATIONS
PART P CERTIFICATED & FULLY INSURED



CALL STEVE ON
07976 283969 / 01582 665068
aspect@sparky.me



EXCEEDING EXPECTATIONS IS JUST PART OF OUR SERVICE



If you're **selling, letting** or **buying** a home, make it happen with your local estate agent



01525 220605 • info@giblinproperty.co.uk
www.giblinproperty.co.uk

THE WORKTOP SPECIALIST

DELIVERING OUTSTANDING QUALITY & SERVICE FOR ALL YOUR WORKTOP & JOINERY NEEDS FOR OVER 50 YEARS

- FREE HOME MEASURING SERVICE
- CUTTING & EDGING SERVICE AVAILABLE
- VISIT OUR BRAND NEW SHOWROOM

Abbey Gate, Boscombe Road,
Dunstable, Bedfordshire, LU5 4FA

Tel: 01582 668 973 Fax: 01582 608 227
Email: sales@dunstablelaminates.co.uk
Web: www.dunstablelaminates.co.uk



@DLaminates



Dunstable Laminates



D R Property Services

Kitchens
Bathrooms
Repairs & Improvements

01525 237498
drpsuk.pt@gmail.com 07970 260518

Anne Johnson D.O. Registered Osteopath

6 Moor End,
Eaton Bray

01525 221958
07957 250682



Café masala

Exquisite Indian Cuisine

We Cater for Office or Private Parties and don't forget to try our Sunday Buffet

10% Discount on all Takeaway Orders Over £12
Fully Licensed & Air Conditioned

Open Seven Days a Week

Hours: 12 Noon to 2.30pm & 6.00pm to 11.30pm

Tel: 01525 22 22 64

63 Bower Lane · Eaton Bray · Dunstable · Beds · LU6 1RB
email: taraque@hotmail.co.uk · www.cafemasala.com

alto window cleaning

A reliable and professional service.....

- Window Cleaning
- Conservatory Cleaning
- Fascia & Gutter Cleaning
- Solar Panel Cleaning

T: 01525 234120
M: 07807 973871

AARON FENCING

ALL TYPES OF DOMESTIC & COMMERCIAL
FENCING & DECKING WORK UNDERTAKEN

FREE ESTIMATES
FULLY QUALIFIED & INSURED
PERSONAL SERVICE AT COMPETITIVE PRICES

TEL: 01582 665779
MOBILE: 07798 927272

7 STATION ROAD, DUNSTABLE, LU5 4HS

YEARDYE

Luxury Bathrooms

A family-run
business for
over 25 years

DESIGN
SUPPLY
INSTALLATION



www.yeardyeluxurybathrooms.co.uk

email: bathrooms@yeardye.com
T: 01296 706220 T: 01525 222717

Buy Direct From Our
Own Farm

Master Card

VISA

From **Ivinghoe Turf**

- Commercial & Domestic
- Small Orders Welcome
- Bark, Grass Seed & Fertiliser
- Laying Service
- Discount on Larger Orders
- Screened & Blended Topsoil
- All Year Availability
- Forklift Delivery Available



ROLAWN[®]
Approved Rolawn
Stockist

Family firm farming since 1949

ALL AREAS

Freephone :

0800 043 5061

www.ivinghoeturf.com

The Bungalow, Vicarage Farm, Ivinghoe, Leighton Buzzard

ARC Contract Services Ltd

- Painting & Decorating • Plastering
 - Wall & Floor Tiling • Door Hanging
 - Bathroom & Kitchen Installations
- 20 years experience

All work guaranteed and fully insured

Call Adrian : **01582 539179**

Mobile : **07789730580**



WESTROPE BROS.

LAWN MOWER SERVICES

ALL TYPES GARDEN MOWERS SERVICED

THE RYE, EATON BRAY

Tel: Eaton Bray 220587

Gas Boiler Servicing

Over 40 years experience

Have your boiler serviced by a **Gas Safe**
and **CORGI** registered engineer

Other services available:

Maintenance, repair and installation of all domestic gas appliances including LPG. Boiler installations, Landlord Safety Certificates and Power flushing.

Free Quotes, no call out fee, and free friendly advice on all of the above.

Edwards Gas & Heating Services

Eaton Bray



Tel 01525 220626

www.edwardsgasandheating.co.uk
stevethegas@orange.net



Vicky

The Dog Grooming Specialist
www.vickysdogcare.co.uk



With a reputation for offering an exceptional personal service



- Over 29 years of professional experience
- Trained at the London Academy of Professional Groomers to the highest City and Guilds standard
- Dorwest Veterinary Trained
- Member of the Pet Industry Federation
- Sympathetic and gentle handling of all dogs
- **FREE** Health check with every grooming session
- **No cages used! No cage dryers!**
- One to one personal attention.....loads of TLC

Where Dogs Come First!



Mobile: 07796 445416

Telephone: 01525 222775

Email: enquiries@vickysdogcare.co.uk



Committed to the highest standards of animal welfare and customer care

Over 30
Years
experience.
FREE
Quotes

Misty Double Glazing?

Over 30
Years
experience.
FREE
Quotes

**KEEP YOUR WINDOW FRAMES...
... WE JUST REPLACE THE GLASS!**

- UPVC • Aluminium • Or Wood

Because we replace just the glass the repair is a
Fraction of the cost of a complete replacement window.

BEFORE



AFTER



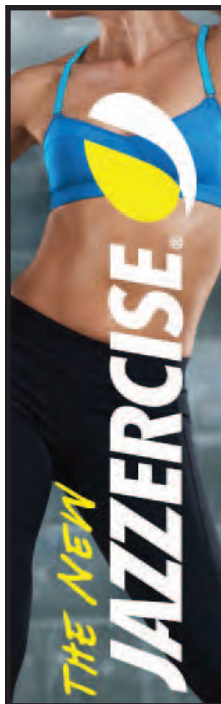
mistydoublinglazing.co.uk

QUALITY GLAZING SERVICES

01525 876808

WE ALSO REPLACE BROKEN...

- Glass • Handles • Hinges & Locks
- AND REPAIR...Patio Doors & Conservatories!**



**JAZZERCISE
DANCEMIXX
CLASSES
AT ST MARY'S
EATON BRAY
9.30am
THURS & SAT
AND
BREWERS HILL
DUNSTABLE
7.45pm
MON & WED**

**01525 715208
angelajazzercise
@gmail.com**

REVIVE HOLISTIC THERAPY

Holistic therapies are concerned with treatment through massage, manipulation and relaxation. They are not only treatments for one physical ailment or one part of the body, but also treat the person as a whole.

Ideal for today's stressful lifestyles.

Treatments include:

- Aromatherapy Massage
- Indian Head Massage
- Hot Stone Massage
- Reflexology
- Reiki

Vouchers are available for any treatment, so why not treat a loved one or friend as well as yourself.

Edlesborough based. For more information or to book an appointment call
Kate Meredith IIHHT, RGN, on **01525 221380**



*HPC Registered
CHIROPODIST & PODIATRIST*



(Also Central Luton surgery - open 6 days)

*Stuart Ball
Ceramic Tiler
Specialist
at all aspects of
Wall & Floor Tiling
Over 32 yrs Experience
01525 229381*



Stephen D. Janes

(Established in 1982)

**CARPENTRY, JOINERY
KITCHENS FITTED
PROPERTY MAINTENANCE
TELEPHONE: 01525 220649**

**G & J Groundwork
Ring Garry**
01582 477568
07949 118011

**Fencing Panels • Blockpaving • Paths
Shingle Drives • Slabs • Paving
Steps • Gardenwalls • New Patios
Relaying • Soak Aways • Drainage
Free estimates or advice • References
www.gandjgroundwork.co.uk**

Neil Hodson Associates

*BUILDING DESIGN
STRUCTURAL ENGINEERING*

**PROFESSIONAL BUILDING DESIGN,
ADVISORY AND DRAWING SERVICES**

From plans for domestic extensions
to multi-storey offices, commercial
buildings and factories.

Structural surveys, site surveying,
advice on building defects and
Feasibility Studies

Planning Applications and Building
Regulation Consents obtained.

**24 HIGH ST TRING
Tel 01442 890894 OR
Edlesborough 222462**



At Ian Waldron Photography we strive to capture images that are both relaxed and natural. We do this with little fuss or intrusion so you can enjoy one of the most special days of your lives! This is also true of our portraits which are all done on location which captures you and your family perfectly.

Ian Waldron
naturally relaxed photography

www.ianwaldronphotography.com
01525 221479
Your Village Photographer

Community Carol Concert

at the Village Hall, Eaton Bray

Sunday 29 November 2015



4pm

**FREE
ADMISSION**

Featuring:
Nativity (children)
Children's Choir
Jazz Group
Community Band

**A freewill offering will be
taken and all proceeds are
for Keech Hospice Care
(Children's Hospice)**



The Salvation Army, Eaton Bray Corps, Booth
Place, Eaton Bray, LU6 2DR

Tel: 01525 222087; 07932 057490

A Church & Registered Charity no. 259322



Market your home with us and receive an exclusive **free microsite** for your property to be shared across your chosen social networks.



Visit **mandmproperties.tv** to find out more.
The only Estate Agent in Leighton Buzzard to offer this unique and unrivalled service.
Call us for more details

Tel: 01525 377733 | mandmproperties.co.uk | mandmproperties.tv

Live a healthy & active life

Free 10 minute advice chats with our Chartered Physiotherapists & HCPC Registered Podiatrists

PHYSIOTHERAPY
PODIATRY &
CHIROPODY
PILATES
ACUPUNCTURE
SPORTS INJURIES
MASSAGE
WOMEN'S HEALTH
& PREGNANCY
CARE

St. Judes
physiotherapy, health and well being

**01525
377751** 

enquiries@stjudesclinic.com
www.stjudesclinic.com

J Able bathrooms

New Showroom NOW Open in Edlesborough

DESIGN

Free CAD design of your bathroom, This will give you a photo realistic finished plan of your design.

SUPPLY

Come and browse our display suites, This will help you decide on the perfect bathroom for your needs.

INSTALLATION

Our installations are of the highest standards!

We take pride in making you delighted with the finished result.

We have suites in a wide range of styles to suit your budget.
Drop in or ring to make an evening appointment at the showroom
or a home visit at your convenience.

Opening Times

Monday. 9am-5pm
Tuesday. 9am-1pm
Wednesday. Closed
Thursday. 9am-1pm
Friday. 9am-5pm
Saturday. 9am-1pm
Sunday. Closed

T: 01525 220043 M: 07891 449077

3 Summerleys, Edlesborough, Buckinghamshire, LU6 2HR
W: www.jablebathrooms.co.uk E: ableplumbing@hotmail.co.uk

fancy a break?



LUXURY 3 BED, 2 BATH APARTMENT APPROX 1 MILE FROM CENTRE OF PUERTO BANUS MARINA, SPAIN. 45 MINS EASY DRIVING FROM MALAGA AIRPORT.

ALL MOD CONS INCLUDING AIR-CON, SAT TV, FULLY EQUIPPED KITCHEN, SWIMMING POOLS, EXCELLENT CLUBHOUSE & TENNIS COURTS.

MANY GOLF COURSES AND ALL WEATHER BOWLING GREENS NEARBY. CLIMATE IDEAL FOR HOLIDAYS THROUGHOUT THE YEAR. RATES £350 - £750.

CALL PETER OR CELIA ON 01525 220173 OR VISIT OUR WEBSITE AT WWW.479LOSANARANJOS.CO.UK.



'A fresh approach to selling property' ...

IN AND AROUND YOUR VILLAGE

Phone now for a free, no obligation, Valuation of your Property

01296 660230

01442 863737

www.plummproperty.co.uk

Absolutely Plastered

**DOMESTIC/COMMERCIAL,
CLEAN AND RELIABLE SERVICE,
FREE ESTIMATES, FRIENDLY ADVICE**



- * Plastering & Coving
- * Floor Screeding
- * Pebbledashing & Rendering
- * Dry Lining
- * Cornices & Mouldings
- * Insurance Work Undertaken

CALL NICK CONWAY ON

Mobile: 07751 830716

Tel: 01296 688981

6 Cotes Way, Wing, LU7 0RB

Established over 20 Years

Duncan Tomblin TREE SURGEON

**Forestry Contractor • Tree Felling
Crown Reduction & Thinnings
Deadwooding • Hedge Cutting
Stump Grinding • Site Clearance
Private Agriculture Fencing Contractor
Chipper & Stump Grinding Hire
Digger Hire**

**FULL PUBLIC LIABILITY INSURANCE
FREE ESTIMATES**

'The Best Choice For Your Tree'

TEL: (01525) 221946

MOBILE: (07802) 410728

12 Greenways, Eaton Bray, Beds

Festive Coffee Morning

All funds raised in aid of
Motor Neurone Disease

All Saints Church
Dagnall

Saturday 28th
November
10am - 12.30pm

All Welcome

Dagnall Christmas Bingo

Fourth Festive Bingo
in memory of Basil Thorne

Wednesday 2 December

7.30pm for 8pm start

Dagnall Village Hall

Bring Your Own Party Food for the buffet
- please bring a plate of sweet or savoury
or drink of your choice Raffle

Any enquiries please phone

Sheila on 01442 842404

or Helen on 07825 778930

Proceeds to Dagnall Village Hall

Calling all Mums and Dads



Christmas will soon be upon us and what better way to start the festive season than with a personalised letter from Santa delivered to your child ?

Look out for our advert next month which will give you full details of where to post those letters to Santa - everyone will receive a personalised reply, sent from Laplandof course



Christmas 2015 in Dagnall

Friday 4th December

Father Christmas Around
the Village, 6.30pm



Father Christmas Switches on
the Village Hall Lights, 7.30pm

Other Christmas Events in Dagnall

Christmas coffee morning at the church
Saturday 28th November

Christmas Bingo, Weds 2nd December

Christmas Fair, Saturday 5th December

Dagnall Children's Party

Sunday 6th December (Dagnall children only)

Carol Concert, Sunday 13th December

Dagnall Over 60s Party

Tuesday 15th December (Members only)

Best decorated house competition

Saturday 19th December

Carol service at the church

Sunday 20th December



**Welcome to
Eaton Bray Academy**

Telephone: 01525 220468
Email: admin@eba.ec

A wonderful place to be



Patricia

Mobile Beauty Therapist

Massage & Beauty Treatments

01525 237781

07866 126510 Fully Accredited & Insured



McTimoney CHIROPRACTIC



Margie Craib BSc BHSI DC AMC MMCA
Human and Animal Treatments

Ashridge Farm, Ringshall, Berkhamsted, Herts HP4 1ND
Telephone: (01442) 842729

General Chiropractic Council Registration No. 293



Virtual administrative
support to businesses &
private individuals

Website hosting

Domain registration

Desktop publishing

01525 229695

Email:

enquiries@morenassociates.co.uk

www.morenassociates.co.uk

ADRIENNE'S PRIVATE HIRE

Call for a FREE quotation
Book early to avoid disappointment
Very competitive prices

Airport Transfers
& Private Hire

07980 039715

Our executive Cars, 6 seater Minibuses and
lady driver are all available



J.G.S. Metalwork & Son

Specialists in Gates
& Gate Automation

Access Control • Security Grilles • Railings
Balconies • Stairwells

www.jgsmetalwork.co.uk

Call in to discuss your ideas

High Street, Edlesborough LU6 2HS

Tel: 01525 220360 Fax: 01525 222786

GRASS ROOTS GARDEN MAINTENANCE

TREE SURGERY, HEDGE PRUNING,
SELECTION SUPPLY AND PLANTING OF
TREES, SHRUBS AND HEDGES.
REGULAR MAINTENANCE/ONE-OFF JOBS
(Fully Insured)

Brian McMahon NCH (Arb)

01525 221960



Edlesborough Flowers

Flowers, Gifts, Jewellery
& More...

2 High Street,
Edlesborough,
LU6 2HS

Tel: 01525 221920



EDLESBOROUGH CHURCH (ON THE HILL) FLOODLIGHTING EVENT !

Sat. 14th November : 5-6 pm

Warming
refreshments

Wrap up cosy

Bring a torch
(+ the kids!)

On site raffle draw for the honour of
switching on the lights to our truly
magnificent 13th Century church.

ALL PROFITS TO BBC'S CHILDREN IN NEED



Eaton Bray Academy's

CHRISTMAS FAYRE

Saturday 28th November

12:00pm to 3:00pm

Great pocket money games to play
Hot soup and pizza
Cake stall and refreshments
Visit Santa in his Grotto
Fantastic raffle prizes
Exciting gift stalls
and much more

Everyone welcome, hope to see you there!



Music at St Mary's

POPPY PROM

7 NOVEMBER, 7:30pm

St Mary's, Eaton Bray

A celebration of 'Remembrance' and
'The Last Night of the Proms'

featuring: Dagnall Community Choir, St Mary's Choir, South Beds
Concert Band, plus soloists Min-Min Peaker and Bernadette Freed

Box Office: 01525 222283

Tickets (£12.50 & £10) will go fast so hurry to book your seats!

St Mary's Christmas Fair

Saturday 14 November 2015, 12.00 - 3.00pm

Eaton Bray Village Hall

50p admission adults

Children free!

Come and visit

Santa and Mrs Claus

with their elves in their
Christmas grotto at this
year's Christmas Fair!

With lots of other stalls to browse for your Christmas
presents, or just to treat yourself! Delicious bacon
butties and other refreshments on sale all afternoon.

For more information, or to book a stall, please ring
01525 852368.



ILLUSTRIA

Kennels & Kathotel

Offering your pet a fully licensed Dog and Cat boarding service.

Purpose built Dog kennels

Individual Cat chalets with outdoor exercise runs

All in pleasant country surroundings

01582 ~ 665343



ILLUSTRIA
Springfield Road
Wellhead
NR Dunstable Beds
LU6 2JT



Proprietors

Mick, Denise and Michele Garrod



The Gentleman Gardener

Let your local RHS qualified gardener make your garden beautiful, from simple garden maintenance to total redesign of your garden.

Please call Barry on
**01525-222451 or
07541196384**

to pop round for a free chat.

N.D.S.

General Building & Plumbing
(25 years experience)

- Roofing; Installer of UPVC guttering, soffits & fascia boards
- Kitchens & Bathrooms fitted
- Property Maintenance
- Fencing • Patios & Block Paving
- Gazebos • Garden Structures

Tel: 01525 221470

Mobile: 07946 626564

FREE ESTIMATES

...

**ALL WORK CONSIDERED
NO JOB TOO SMALL**

For a top quality
decorating job call

Marc Flack

01525 223166

Trading locally for 10 years
References are available

Make your house a home with blinds and awnings from

**VANSAR
BLINDS**



www.vansarblinds.co.uk



- Free No Obligation Measuring And Quotations
- All Blinds Made To Measure
- Choose In The Comfort Of Your Own Home Or Workplace
- Family Run Business
- Large Range Of Quality, Affordable Fabrics And Colours To Choose From



Call: 01525 220477 or 01582 699565 E: sales@vansarblinds.co.uk

Financially Prudent (IFA) Ltd

23 The Green, Edlesborough, LU6 2JF

Your local IFA for impartial Personal or Corporate advice on:

- Mortgages
- Pensions & Annuities
- Insurance
- Savings & Investments

Call Paul Pearce on 01525 220480 or email paul@finpru.com for a no obligation initial discussion



Financially Prudent (IFA) Ltd is authorised and regulated by the Financial Conduct Authority



Established Village Dog Grooming Service

Professional and Affordable
Large breeds welcome
Trained in Hand Stripping
Nails, Ears and Glands included

Contact Ulrika Tel 01525 211592
5 Mill Road, Stanbridge, Beds. LU7 9HX
www.abfabgrooming.co.uk

Spinney Landscapes & Gardening Services

All Aspects of Grounds Maintenance

Weed Control • Driveways & Patios
Lawn Care & Scarifying • Fencing
Turving • Tree Work
Snow Cleaning & Gritting

Tel: 01582 872084 Mob: 07876 500292
Email: chambo.1628@btinternet.com

invites you to

Eaton Bray
Methodist
Church

Café Community

Saturday November 14th

11.00am to 1.00pm

Relax & chat with friends,
coffee/light lunch

Charity of the month:
Medical Aid for Palestinians

All ages welcome (inc. activity area).



1ST TOTTERNHOE BROWNIES, BEAVERS, CUBS & SCOUTS



Saturday 7th November

11am - 2pm

The Square
Methodist Church
Ashton Square

Dunstable Town Centre (Opposite Wilkinson)



CLOTHES



BRIC A BRAC

TOYS

**WE ARE
MACMILLAN.
CANCER SUPPORT**

Charity Quiz Night

Friday 13th November

7.00p.m. for 7.30 p.m. start

at

Leighton Buzzard Rugby Club
Stanbridge Rd.

Teams of 6 to 8,

£8 each including Supper.

Licensed Bar

To book call the Rugby Club 01525
371322 or Sheila on 01525 221556

If you enjoy a quiz please come
along and support this worthwhile
charity

THE BEDFORDSHIRE AREA GROUP
OF THE ASSOCIATION OF 16MM
NARROW GAUGE MODELLERS
PRESENTS

STEAM IN BEDS "2015"

THE SHOW JUST GOT BIGGER AND BETTER
LARGE SCALE NARROW GAUGE
MODEL RAILWAY SHOW
FEATURING NARROW GAUGE
LAYOUTS RUNNING 16MM LIVE
STEAM LOCOMOTIVES. TRADE
SUPPORT FROM SPECIALIST
SUPPLIERS

SATURDAY 28 NOVEMBER

10.00AM TO 4.30PM - ADULTS £5.00
ACCOMPANIED CHILDREN UNDER 16 FREE

VENUE

EATON BRAY VILLAGE HALL
INCLUDING PART OF ST MARY'S
CHURCH, EATON BRAY,
REFRESHMENTS AVAILABLE
FOR FULL DETAILS SEE OUR WEB SITE:
WWW.BAG16MM.ORG.UK

Stanbridge Logs

**SEASONED
HARDWOOD**

LOGS

CONTACT

07835175402

OR

stanbridgelogs@gmail.com

Stanbridge Logs

♪ **singalong** ♪
with Helen

40 minutes of musical fun with
instruments and puppets
(Term time only)

- Monday - 10.30 @ Pitstone
- Tuesday - 10.00 @ Cheddington
- Wednesday 10.00@ The Hub, Ivinghoe
- Wednesday - 13.30 @ Pitstone
- Thursday - 10.00 @ Pitstone
- Friday - 10.00 @ Pitstone

Call me on 01296 661791 to reserve a
place or ask about Singalong parties
0-5 year olds £3.75
siblings 2+ only £2
siblings under 2 - free
free tea, coffee, juice and biscuits



A 'home-from-home' childcare
provider dedicated to
enriching children's lives
through learning and play

pacey Member

Ofsted Registered Childminder
Eaton Bray

Contact Tania Tel: 07818 088 481
childmindingeb@yahoo.co.uk

REBECCA GARRARD BMUS (HONS)

MUSIC TUITION



- Experienced Piano,
Violin and Clarinet
teacher
- Saturday lessons now
available
- All ages and skill levels
welcome



TEL: 07747 595152

EMAIL: rebecca.2.garrard@gmail.com

Kumon's maths and English
study programmes are tailored
to your child's individual needs,
nurturing their independence
and enthusiasm for learning.

To unlock your child's potential,
contact your local Instructor for
a Free Assessment.

Tring Study Centre
Louise Ogelman **01525 378 840**

Develop
your child's
independence

KUMON

kumon.co.uk

S M Reilly & Son Ltd

General Builders & Contractors



Turning Your House into
a Home Since 1987

*All aspects of the building
trade undertaken*

- *Extensions*Hard Landscaping*
- *Windows, Doors & Conservatories*
- *Fitting of Aluminium Bi-fold Doors*
- *Kitchen & Bathrooms*Drives*
- *Loft Conversions*

01525 221740
07970 637511

ALAN BOULT

(Light Haulage)



- TRANSPORT ● COLLECTION
- DELIVERY SERVICE
- SINGLE TO MULTIPLE ITEMS
- REGULAR CONTRACTS WELCOME

Tel: 01296 427182

Mobile: 07770 237745

Email: boulton586@btinternet.com

A McClelland

Pest Control



FOR FAST RESPONSE CALL:
mobile 0777 494 8415 or office 01582 872158

*specialists in: wasps - bees - ants - hornets
fleas - cockroaches - bed bugs - pigeons - magpies
rabbits - rats - mice - moles - squirrels - foxes - mink - feral cats*

UNMARKED VEHICLES

For further information please call
or email a.mcclelland_pestcontrol@hotmail.co.uk



Tel: 01525 221847
sales@act.uk.com



GENERALMECHANICALSERVICESLTD

VEHICLE SERVICING AND REPAIRS



**MOTs • MOT REPAIRS • SERVICING
DIAGNOSTICS • TRACKING • AIR CONDITIONING
TYRES • CAMBELTS • COLLECTION & DELIVERY
WELDING & FABRICATION • BATTERIES**

All vehicles - all mechanical work!

1 HONEYWICK LANE, EATON BRAY, LU6 2BJ

reception@general-mechanical-services.co.uk

www.general-mechanical-services.co.uk



01525 222876



TEL: 01582 667924



13185

"Good reputations take years to build"

GRAHAME PRATT

Plumbing & Heating Engineers

**Plumbing & Heating
Bath & Shower Room Design and Installation
Ceramic Floor & Wall Tiling
Kitchen Installation
Small Building Works**

www.grahameprattplumbing.co.uk

Email - enquire@grahameprattplumbing.co.uk

NG AUTOS



MAKING YOU AND YOUR CAR HAPPY

CAM BELTS • MOT'S • MOT REPAIRS • HEAD GASKETS
AIR CONDITIONING • RECOVERY/BREAKDOWN
DIAGNOSTICS SERVICING • BRAKES • SUSPENSION
CLUTCHES • GEARBOXES • TYRES • WHEEL BALANCING
WHEEL ALIGNMENT COLLECTION & DELIVERY

CALL NICK OR GARY

01525 220850 OR 07972 198615

**SPARROW HALL FARM, LEIGHTON ROAD,
EDLESBOROUGH LU6 2ES**



Reception



Service Bays



MOT Station



Dunstable Lock & Safe Co

Locksmiths & Safe Engineers

A local family run business for over 30 years

Special Offer

5 Lever Insurance rated mortice
deadlock, supplied & fitted
Only £99.00 inc VAT

- Anti snap cylinders
- UPVC door & window locks
- Safes supplied & fitted
- Master key cutters
- Safes opened & repaired
- All locks supplied & fitted



Be one step ahead of the burglars and call us
today to discuss your security needs however
big or small

89 High Street South

Dunstable

Beds, LU6 3SF

Tel: 01582 696108

www.Dunstablelockandsafe.com

**Made to order
garden furniture & ornaments**

Call John on: 0789 506 8251



**Makes an ideal gift
for any occasion**



David Brown

Window Cleaning

Quality Reliable Service.

Regular, Occasional or
Single Visits.

Friendly Free Estimates.

Facias, Guttering & Conservatories.

External Cleaning & Maintenance.

Fully Insured.

Phone 01582 472113

Mobile 07534 837073

D & E HINES

High-Class Butchers

Quality Beef, Pork & Lamb

Grade A Poultry

BBQ & Sausage Speciality

Renowned for 'Bunkers Sausages'

Telephone: 01525 220413

98 High Street, Eaton Bray

Eaton Bray Village Hall



- ❖ Equipped to support theatrical productions and film shows
- ❖ Large car park
- ❖ Large Kitchen with a six ring cooker, large refrigerator, hot trolley, crockery etc.
- ❖ 3 separate areas to hire to meet your needs and budget
- ❖ For more information and brochure please ring Norman on 07975 797202

- ❖ Superb venue for weddings
- ❖ Fantastic place for parties and dances
- ❖ A must for children's parties, can fit the bouncy castle inside if weather dictates!!!
- ❖ Keep fit groups
- ❖ Ideal for Club meetings or functions



Dagnall School



A Buckinghamshire co-educational school

For 4-7 year olds



Dagnall School offers small class sizes, an exciting curriculum, excellent care and support and good links with the local community



Ofsted 2011
"Pupils are confident,
very happy at school
and curious to learn."



Tel: 01442 842473



www.dagnall.bucks.sch.uk

E-mail: office@dagnall.bucks.sch.uk

G.N.C Wall & Floor Tiling

Covering all aspects of tiling from
Natural Stone & Porcelain to ceramics



gnctiling@hotmail.com

Providing assurance & attendance through to
completion of works

For a free full & comprehensive quotation
please call Colin Bell

07725 033017

01525 222094

D.A. Windows Doors & Conservatories

23 Church Lane, Eaton Bray, LU6 2 DJ

Tel: 01525 221051 Mobile: 07801 798387

email: mimcavinder@hotmail.com

AUTHORISED
SWISH INSTALLER
WITH OVER 20
YEARS
EXPERIENCE

Installation of PVCu windows, doors and conservatories
Replacement glass units and window maintenance

QUALITY PRODUCTS - QUALITY WORKMANSHIP -
REASONABLE PRICES



General building
maintenance work
also undertaken
including:
Fascias and Soffits
Gutters
Fencing

Accredited Member of the
Incorporation of Plastic
Window Fabricators and
Installers Limited



PLUMBING AND HEATING

FOR ALL YOUR PLUMBING, HEATING AND GAS
REQUIREMENTS

NOSSITER AND BARNETT LIMITED
PLUMBING AND HEATING

CONTACT MATT OR JAMIE
TEL 01525 229524 MOB 07802 270427





**SECURITY
SYSTEMS
LIMITED**

MJ Security Systems

Contact Us For More Information

Unit 4, Arianne Business Centre,
Blackburn Road,
Townsend Industrial Estate,
Houghton Regis,
Bedfordshire,
LU5 5DZ

Please call for a free quotation

T: 0800 0856126

E: info@mjsecurity.co.uk

W: www.mjsecurity.co.uk

Protecting what's important

MJ Security Systems Ltd



**FROM ONLY
£439.95+VAT
Products and
Installation**

Kit includes:
1 x Wireless Door Contact, 2 x Wireless
P.I.R., 1 x Wireless Sounder, 2 x Remote Set
and Unset Fobs.

Stylish • Wireless • Secure

We also specialise in:

- IP Cameras
- Intruder Alarms
- Access Control
- CCTV & Monitoring
- Door Entry
- Covert Cameras
- Security Lighting

M . P . S

Maintenance & Property Services

- KITCHENS AND BATHROOMS
- PAINTING AND DECORATING
- PROPERTY RENOVATIONS
- PLASTERBOARDING
- FENCING

FREE ESTIMATES
NO CALL OUT CHARGE
NO JOB TO SMALL
LOCAL

Contact:- Julian

07958 306301

E-mail – mps@mustoe.co.uk
www.mustoe.co.uk

Leighton Aerials

Established 1970

**For all your aerial and
satellite needs call Colin
on 01525 374742**



Edlesborough School & Pre-School



Pupils' behaviour is outstanding...

The environment for learning is exciting and stimulating...

A real strength of the school is pupils' attitude to their learning .

Ofsted 2013

For more information about our School, Pre-School and Before and After School facilities, visit our website at www.edlesborough.bucks.sch.uk

Please contact the school on 01525 220431 to arrange a visit.

CHIMNEY SWEEP

Local & Est. Brush n Vac
Friendly, Clean and Efficient

Call **KEVIN HING** on

Tel: 01525 371592

Mob: 07940 528897

www.khing.co.uk

Member of NACS

eww

E W Wallace & Co
Chartered Accountants
Tax Consultants
Business Advisors

Small business specialists serving
Beds, Bucks & Herts

- Annual accounts
- Tax returns
- Self-employed
- Limited companies
- Small business specialist
- Sage Accounts expertise
- Prompt, personal service
- Value-for-money fees
- Free initial consultation

01525 220826

www.ewwallace.co.uk



JAMES FALCON-CROSS

LANDSCAPING AND OUTDOOR LIVING DESIGN



**ALL ASPECTS OF LANDSCAPING
UNDERTAKEN INCLUDING
FENCING, TURFING AND PATIOS
TIMBER STRUCTURES
DESIGNED AND BUILT**

VEGETABLE AND HERB GARDENS

01442 843258 / 07769 901325

ONECROSSFALCON@GMAIL.COM



Beau

HAIR AND BEAUTY SALON

- Unisex hair salon
- Hair Extensions
- Nail Bar
- Wedding, Prom Hair Styling
- Express Eyelash
- Girls Glamour Parties
- Accessories
- Loyalty Cards

01525 220926

3 Summerleys, Edlesborough LU6 2HR

For lots more offers and news about what is happening follow
and like us on  Beau Hair & Beauty  @beausalon

CND 
Shellac™

KOLESTON
PERFECT

O·P·I



ghd

Home or Business
IT Support



Visit Our Website at www.hobit.co.uk

Laptop Repair • Virus Removal • Data Recovery
Laptop Screen Replacement • Data Transfer
Wired & Wireless Networks • Broadband Setup
Backup Solutions • Printing Problems
Tune Ups • 1:1 Training • Email Problems
Ipad & Iphone Connectivity Issues
Computer Upgrades • Free advice

Call now 01525 378127 or 07702 80 70 90

RELIABLE - PROFESSIONAL - LOCAL

James B Chadburn FBHI Fine Antique clocks & Barometers

Specialist in repairs & restorations.

Valuations & clock finding service.

Advice & assistance on formation & disposal of private clock collections.

Quality clocks/barometers Bought & sold.



Telephone 01525 221165

Mobile 07790 000629

E-mail: info@jameschadburn.com

Reiki Therapy

Reiki means universal energy. It is a relaxing, calming therapy that calls on your own bodies natural healing properties. It is possible for Reiki to help with physical symptoms, emotional issues and spiritual growth.



Session is £30 per hour

Contact Nicola (Reiki level 2)

Mob 07941799772

01525837018

Bower Lane Eaton Bray

T. COBB

PLASTERING
FLOOR SCREEDING
PLASTER MOULDINGS
CEMENT CORNICES
RENDERING

GENERAL BUILDING & ALTERATIONS

TEL: 01525 792698 MOB: 07772 231348

Wagging Wonderful

Dog Grooming

Here to take care of your mucky pup!

- Your local grooming service in Eaton Bray!
- 1-2-1 care for your dog
- NO cages!

Telephone: 07580 343 396

Website: waggingwonderful.weebly.com

Email: waggingwonderful@yahoo.co.uk



Harmony Plus Hair & Beauty Clinic

Bridal Packages Available

We offer a range of treatments:

- 3D Lipo Fat Reduction
- Teeth Whitening
- Caci Non-Surgical Face Lift
- Crystal Clear Microdermabrasion
- Extreme Lashes and LVL's Lashes
- HD Eyebrows
- Fake Bake Tanning
- Young Blood Make-up
- Manic Nails
- Bio Sculpture Gels
- Shellac Nails
- Hot Stone Massage
- Reiki

Call us today

Harmony Retreat

FREE SPA PLACE
in our cosy log cabin
FOR THE BRIDE ONLY

if the Bride books her Spa Hen Party
for 5 people or more at
Harmony Retreat's Log Cabin
when Hair & Makeup is booked
with Harmony Plus Hair & Beauty Clinic



Harmony Plus Hair & Beauty Clinic
6A Wallace Drive • LY6 2DS • Dunstable/Leighton Buzzard
07852 145053 • www.harmonybeautysanctuary.net



C H BUILDERS

1 Richmond Court
Eaton Bray
Dunstable
LU6 2DY

cwhawkes@tiscali.co.uk
Tel: 01525 229558
Mob: 07989 357231

Local builder with over 35
years experience in the trade,
specialising in:

- Kitchen fitting and alterations
- Extensions
- Loft conversions
- Renovations

Recommendations available

Please contact Chris to discuss
any requirements for a free
quotation

LINSLADE PHYSIOTHERAPY & SPORTS INJURY CLINIC

47a Coniston Road Linslade
Leighton Buzzard Beds LU7 2PJ



Affordable effective treatment to ..

- Relieve your neck & back pain
- Loosen your stiff joints
- Ease your arthritis
- Get you back in the game after a sports injury
- Help you recover from surgery

Why Wait To Feel Better?
Ring for an appointment now
01525 853462

E-mail: pt4u@linsladephysiotherapy.co.uk

(Ample free parking available)

Stay Healthy & Happy at Work



Work is good for us and we all thrive on a little stress but too much can result in real problems for our minds and bodies. Stress can leave us feeling tense, causing tight muscles in our back and neck and is the no. 1 cause

of workplace sickness absence*. By adapting our day-to-day work habits we can improve our stress levels and general health.

Here are a few tips to increase activity and reduce stress:

- Feel calmer by relaxing your breathing - take a few deep breaths.
- Go outside and have some fresh air during breaks and go for walks at lunchtime, or sign up for a class like aerobics, or Tai Chi
- Take regular, short breaks away from your desk and use them to be active - walk and stretch.
- Take the stairs instead of the lift and park at the opposite end of the car park.
- Rotate your tasks - alternate computer work with getting up to speak to people.
- Wear a light weight headset and stand up to make some of your phone calls - don't wedge the phone between your head and shoulder.

Alan Ratheram

May 1953 - June 2015

Our thanks to all who sent their good wishes and support during Alan's final few weeks.

Julie, Tom and Gill

- Don't skip meals and do drink water regularly.

Be active daily - physiotherapists recommend 150 minutes of moderate to vigorous exercise each week, raising your heart rate, but not being so short of breath that you can't talk. It's OK to be active in 10 minute bouts.

For more information go to: <http://www.csp.org.uk/your-health/keeping-healthy-at-work> or contact your local Chartered Physiotherapist:



**St Judes Clinic,
26 Lake Street
Leighton Buzzard
LU7 1RX**

☎ 01525 377751

**📧 www.stjudesclinic.com
enquiries@stjudesclinic.com**

* (CIPD Absence management survey 2011)

London Luton Airport

With an increase in aircraft in the area and in particular when the wind is from the East, we are getting some aircraft flying directly over the village to join the flight path into the airport. If you are disturbed by the traffic flying over the village, there is a complaints hotline number: 01582395382. This is an airport number where you can register your concerns. It is important to do this if we are to reduce these disturbances over our village.

If you need to complain about Heathrow flight noise the number is 0800 344 844. Email: noise_complaints@heathrow.com





Eaton Bray Lawn Tennis Club

Will this year be the one when Dan takes home the cup?

That was the question posed in the penultimate paragraph of the September article.

In the first Eaton Bray Men's final, way back in time, both participants were in their 40ies. This year Darren Kerins also found himself in that age range against the younger Dan Sunderland. It was Darren's 19th consecutive final, Dan had reached the final on 2 previous occasions in 2002 & more recently in 2013 both times Darren had proven too strong an opponent. This year's match lasted in excess of 3 hours. At 6-4; 1-6; 2-5; Darren's defence of his title looked doomed but he saved a match point in a 57 shot rally & won the next 4 games. It was then Dan's turn, at 5-6 down, to stare defeat in the face but his overwhelming will to win gave him strength against a superb adversary & eventually he secured victory at 8-6 on the 69th shot of the final rally. Fortunately the crowd were not holding breath between points!

Dan has joined the exclusive band of "one hit wonders" Peter Hale, Anthony Kearney & Roy Cook - winners of a single final – not an insignificant feat as all four achieved what one prominent player strived to do, without success, over 17 years. Wayne Moore, Nick Boys & Michael Tatham are the only other players besides Darren to have won twice or more.

In the Under 18 Boys final Benjamin Johnson reversed earlier results against the same opponent by defeating Max Freebairn. Max had his moments of triumph later on.

Whilst these finals were progressing, (even without the presence of Focus poet & menu master Andy Cross,) Stephen Macintosh, Anthony Jones & Dave Williams, Eaton Bray's answer to the Beverly Sisters

(prior to the recent sad loss of Joy) were producing beautiful burgers & heavenly hot dogs. They certainly did know their onions & Shirley Macintosh kept them on their toes.

The Under 18 Boys Doubles final was won by Max Freebairn & Philip Clarke against Benjamin Johnson & Ben Williams. Philip Clarke was also victorious in the Under 16 Boys final against Thomas Noithip. In the Under 14 Girls final Rosie Dickson beat Anna Bowen & this after Anna had earlier played her semi-final against Georgia Griffiths. Thomas Noithip defeated Cameron Brown in the Under 14 Boys final, Jessica Bowen came out on top against Lauren Smith in the Under 12 Girls final & in the Mini Green final Lewis Brown beat Jamie Williams.

Great credit should be given to all of the junior tournament participants – finalists & those who didn't quite make it this year – there is always time – ask Janet Hale, who beat her husband's record in the longevity stakes by featuring in the first & twenty seventh Ladies Doubles final – plus a couple in between as Mem Sab (Membership Secretary & all round scary chaser of subscription renewals) Helen Woodhead, reminded me. Not surprisingly, super-coach Sara Leavy aided by our very own Scottish tennis ace, Kirsty Glynn, beat Janet & Alison Lowe. All 3 sets were fiercely contested. Hopefully Alison will continue her tennis activities at University and on behalf of Eaton Bray Tennis Club I wish her every success.

Steve Macintosh took a little time off from handing over burgers to hit a few of his topspin, southern hemisphere, serves when partnering Alison in the Mixed Doubles final. Unfortunately for both Steve & Alison it was not a final to relish as Sara teamed up

with partner Adam Bamford & showed why she is one of the top players in the county.

In the men's doubles final Peter Messetter & Simon Mitchener – (still an engravers nightmare – but not for this year) – took on Max Freebairn & a freshly showered Darren Kerins. Max was outstanding as he helped Darren achieve yet another year with a trophy. The length of rallies didn't match the singles final but play concluded so late that Simon nearly missed his train. (An "In joke" as Simon is a train driver) I am sure if Andy was still holding the pen there would be a mention of how Simon went off the rails, had a sleeper for a partner & ended up with a tender behind, but fortunately I am not Andy.

Will this year be the one when Dan takes home the cup? As you now can tell – It was. The brilliant coaching work of Sara Leavy & her trusted band of helpers continues. Results in the South Bedfordshire junior leagues for summer 2015 have been most

impressive, as has the organising by Debbie Williams. The emergence of some junior players into the senior play is very welcome – although they may be encountering some shots not taught by Sara, but hey ho variety is the spice of tennis !

The final placings for the three senior teams are not yet known but hopefully our Men's B team will end up top of their section & the Men's A team, although not fulfilling all of their fixtures, will feature in the top couple of teams in division 3 The summer season was always going to be tough going for our Mixed team who gained promotion into the top flight last year. They will probably be relegated this term.

To conclude, Eaton Bray Tennis Club continues to provide coaching, social & competitive tennis to the local community. New members are always welcome. Information is available on our website ebltc.org.uk

✍️Peter Hale

Emilie Sanders Made it to the Top

We made it to the top! A massive thank you to everyone who donated and who attended my fundraising quiz in February - here's a picture of one of the pupils at the Specialist Training Centre for the Deaf in Tanzania who Childreach International have worked with to build a new dining

hall and to keep goats and crops so that the students are guaranteed at least one good meal every day. And another picture to prove I really did get to the top - 5895m! It was hard, but worth it. Thank you!





Buying a New Set of Wheels

Jonathan Vernon Smith is the Sony Award winning mid-morning show presenter for BBC Three Counties Radio. During his consumer hour he helps listeners with their consumer problems and

now shares his advice with you.

Mobile phones, internet connections and cars are the three products I receive the most calls about on my consumer radio show. Today I'd like to help you avoid problems with the latter – cars! Buying a good, reliable car, rather than a nightmare vehicle that will eat into your wallet is a good way to start.

The first important thing you must understand is that unless you buy a car from a proper retailer, you have no comeback if the car develops a fault. The minute you drive a new car away from a private seller, you're on your own if it breaks down. I therefore always suggest buying cars from good, reputable garages, and if you can stretch to it, main dealers. They, generally (and I use that word with caution - some are awful!), offer the best after sales service.

Secondly, you must do your research. Use the internet to find the most suitable car for you. Look at reliability scores, running costs and insurance. Don't rush into purchasing a car you know nothing about on the forecourt, just because you think you'll look good in it. Find something that's the right size, has a good reputation for reliability and isn't going to cost the earth to run.

The third thing you must do is to buy **LOCALLY**. Please don't make the mistake that so many people make these days. They go to a search website, enter

the car of their dreams, find that the only independent garage that has one available in the colour they like is 300 miles away and travel up by train to buy it. If you have a problem with that vehicle it will be YOUR responsibility to get it back to them to repair. That's going to be a very expensive journey on a recovery vehicle all the way to Manchester! Use the internet to research garages and the people that run them.

Fourthly, if you don't know anything about cars, then for goodness sake, take someone with you who does! A friendly mechanic is best. If you don't know anyone who is an expert, then I would strongly advise having an independent check on the vehicle by an organisation such as the RAC. It may cost a couple of hundred quid, but it's worth every penny if it prevents you from buying a complete lemon. A car is normally the second most expensive thing you purchase after a house, I lose track of the number of people who spend £15,000+ on something they know and understand absolutely nothing about and then wonder why they have problems.

Please remember that when you find a car that you like, **DO NOT PUT A DEPOSIT DOWN UNLESS YOU REALLY INTEND TO BUY IT**. When you agree to pay a deposit, you normally enter into a legally binding contract to purchase the product. If you change your mind, you not only risk losing the deposit, you could be forced by the garage to take the car and pay the full amount owing on it. Salesmen and women often suggest the deposit in a relaxed manner. Don't be fooled, when you change your mind, the relaxed manner will probably fly right out of the window.

Never pay the full amount requested for a vehicle. The garage will price a vehicle up with some room for negotiation. If you pay the price on the windscreen, you're probably paying over the odds. Remember car salesmen and women are employed partly because of their ability to get as much money out of you as possible and make the company as much profit. Bear this in mind at all times when agreeing a price to pay. If you're hopeless

at doing a deal, then take someone with you who is good at it!

Finally, if you follow all of my advice and you STILL have a problem with it or the garage, then you can contact me at BBC Three Counties Radio and I'll do my best to try and help you.



Edlesborough Book Group

The Miniaturist by Jessie Burton

We are in 17th century Amsterdam. Petronella Oortman is eighteen years old and newly married, by arrangement, to Johannes Brandt, a wealthy merchant. She has arrived, with only her pet parakeet for company, to take up her position as his wife, and mistress of his house. She discovers that the housekeeping is in the charge of Marin, Johannes's spinster sister, who it would appear is not going to relinquish her position without a struggle. Marin is assisted by only two servants; an ex slave named Otto and Cornelia, a young housemaid. Johannes is caught up in his very successful business, either travelling abroad or busy at his warehouse. He is seldom at home and when he is, he spends his time closeted in his study. He treats Petronella kindly, but shows no interest in her as a wife and the marriage is unconsummated. Petronella is a country girl from a large family and although young, she is aware that Johannes is not behaving normally. There is also difficulty with the domestic arrangements. Although in name she is mistress of the house, in fact she is required to do very little and her frustration mounts. As a diversion, Johannes presents her with a miniature version of their house. Beautifully made and correct in every detail, Petronella is fascinated by the replica of her home and decides to add some personal touches to the house. She discovers a miniaturist working

close by in Amsterdam and orders some pieces for the house. The miniaturist is an enigma, never seen and only contacted by letter. When the work is delivered, Petronella is thrilled by the fineness of the work and the attention to detail; but also disturbed by pieces that arrive that she has not ordered, that seem to predict future events. Johannes's house is a house of secrets and mysteries, which gradually unravel during the course of the story.

Amsterdam is portrayed as a city of contradictions, ruled by the church and commerce, where greed and piety sit uneasily together. Jessie Burton gives us a rich panorama of Amsterdam at that time and has obviously done a huge amount of research to get an accurate background to the story. Unfortunately, there are many instances in the plot that don't ring true and the character of Petronella is given licence to wander the city at will, which is more true of a modern girl than that of a wealthy 17th century Dutchwoman in a very repressed city.

Also, as one of our member pointed out, the present tense narrative, rather jars with the historical aspect of the novel. There are several set pieces, a banquet, a court scene and descriptions of interior life which are very good and the book is easy to read. We thought it was let down by the plot weakness and the rather modern character of Petronella.

Can No One Beat Keith's Best Mates?

As I sit here on a beautiful Autumn Monday morning, thinking back to the superb Quiz held in the Village Hall last Saturday (10th October), it is just that question that keeps nagging away at me. They did it again, despite a gallant effort from the Casual (full marks in the picture round and knew 20 authors of various books but still ended up 5 points short of the winners) and the Minervas. They really are rather good and although they may be friends with Keith Blackburn, our brilliant quiz master, he really tried to fox them, especially with the Sports round, but no, they got 10 out of 10! There is talk of reducing their team numbers to 1 or maybe 2 rather than 8, which might help

us mere mortals. Yep that might work, but as one of the organisers I rather like the money!!

OK enough said and congratulations to them on their fine victory, but the real winners were The Missing, two of their team failed to show, so they were only 4, but they still won 8 packs of chocolates! Maybe Keith's Best Mates could have lent them a couple of people?

Another enjoyable evening was had by all at the sell-out event. **Our Next Quiz will be on April 16th 2016**, so please book early to avoid disappointment.

Call Ross on 221411 or email ross.bagni@btinternet.com

Groups & Gatherings Sought for Charity Challenges

WE ARE
MACMILLAN.
CANCER SUPPORT

Every day in Bedfordshire 8 people hear the devastating news they have cancer, more money is needed to ensure that Macmillan is able to support people affected by cancer and help ensure no one faces cancer alone. For this reason, Macmillan is looking to local groups, clubs, organisations and associations to help in any way. Fundraising Manager Jessica Wilson is well aware of the importance of local generosity.

"We've seen some amazing events and fundraising ideas playing out throughout the year so far, and we can't thank everyone enough for their support," she acknowledges. "Yet there's always an inherent challenge in keeping the wheels turning and ensuring we've got the right funds to allocate to the right places. Donations are literally what keep us going, and we want to continue giving our renowned support to cancer patients

across the county. If you're part of a rotary club, a library, a local parish or any other gathering of likeminded individuals, we'd be thrilled to hear from you."

From parish councils to bowling clubs, schools and colleges to members of the armed forces, raising funds for Macmillan couldn't be simpler. Summer sports days, barbecues, raffles or more are just three of the countless ways you can get involved. No matter what your group can give, it all contributes in a big way to the lives of cancer patients and their loved ones.

Contact your local Fundraising Manager, Jessica Wilson on 07474 920354 or jewilson@macmillan.org.uk please visit www.macmillan.org.uk to find out how you can help. One in three people will be diagnosed with cancer during the course of their lifetime. No one should face cancer alone and with your help no one will.

Deirdea welcomed all members and wished Helen a very happy birthday. Matters arising from the last meeting were dealt with when members were reminded that a) A collection would be made at the meeting for a poppy wreath to go on the war memorial. B) The birthday dinner will be on 9th November at the Old Hunters Lodge. C) The WI flower festival at Dunstable Priory was very successful and well attended. D) Items for the Christmas Charity box in aid of underprivileged children will be collected in November and December.

The December meeting will take the form of a Christmas evening with a buffet and special raffle prizes; monies for this will be collected at the November meeting. There will also be a Group Christmas evening at Caddington on the 11th December. The autumn group meeting, with Eaton Bray WI as hosts was very successful and thanks to everyone for supplying refreshments and tidying up after the meeting. The talk was by The Pearl Lady, an excellent speaker. At the end of the evening there was an opportunity to buy some of the jewellery that she makes. The speaker at our own Eaton Bray October meeting was Tim Corkett on Volunteer Gardening. he has worked at both

Waddesdon Manor and Greys Court, near Henley on Thames. He explained they are totally different National Trust properties, Waddesdon being very grand and the gardens formally laid out each spring and summer with either mainly bulbs or bedding. Each year the bulbs are renewed and last years are replanted in the vast meadows surrounding Waddesdon. The summer bedding usually comprises of approximately 40,000 plants. Weeding the beds is an ongoing, back breaking job!

Greys Court, a much smaller house, has mainly walled gardens producing vegetables interspersed with cottage garden flowers. Tim told the members that the rewards of seeing a new bed come to life that has been laid by your own fair hands is amazing. Margaret thanked Tim for a most interesting talk.

Following social time and the raffle, Deirdrea asked for ways in which we could complete the Eaton Bray W.I. tablecloth to celebrate the 100 years of W.I.

St Mary's 100 Club

Congratulations to the following winners:
September 2015

- 1st Prize – Celia French
- 2nd Prize – Peter Bennett
- 3rd Prize – Pat Quartermaine

If you would like to join the 100 Club please collect a form from www.stmaryseatonbray.org.uk/Groups/100-club or from St Mary's Church, Eaton Bray.

NORTHALL BAPTIST CHAPEL

Chapel Lane, Northall

(just beyond the 30 speed limit signs on the road towards Leighton Buzzard)

Everyone is welcome to our Sunday worship each week between 11am and 12.30pm including tea/coffee and time to talk together.

For more information contact:

John Hazell 01525 218142

Email northallchapel@btinternet.com

There has been a Baptist Chapel in Northall for more than 200 years. Today we continue to seek to worship God, serve him in our daily lives and support and encourage one another in the difficult and the joyful times.

Baby Red Panda Twins Unveiled at ZSL Whipsnade Zoo



The first pictures have been released of twin red pandas, born on 30 June 2015 at ZSL Whipsnade Zoo.

The baby red pandas, named by keepers Bert and Ernie after the Sesame Street characters, have been hiding away in their nesting boxes until beginning of October, after which time their mum, six year-old Tashi began carrying them outside for short intervals.

Senior Keeper at ZSL Whipsnade Zoo, Stephen Perry said: "It's been magical to see the baby red pandas out and about for the first time.

"Red pandas can be difficult to observe due to their shy and secretive nature, their



nocturnal habits and the fact that they spend most of their time up trees. We never see much of their babies for the first couple of months of their lives but it's worth the wait. They're incredible and beautiful creatures, and a real visitor favourite.

"Tashi is a brilliant mum, and when the weather gets warmer you sometimes catch her carrying the babies between nesting

boxes to find the coolest one for them."

Bert and Ernie are part of the European Endangered Species Programme (EEP), a tool used by zoos, aquariums and wildlife parks across Europe to manage conservation breeding programmes. Bert and Ernie are the fourth and fifth cubs born to experienced mum Tashi at ZSL Whipsnade Zoo.

Stephen Perry said: "Having such a confident mum there is great because it means we can just leave them to it and not interfere. We just check in on Tashi, the boys and their dad Blue once a day to make sure everything's okay."

Red pandas, which are classified as Vulnerable by IUCN's Red List of Threatened Species, are found mainly in Nepal, India, Bhutan, Myanmar, and southern China. There are thought to be around 10,000 red pandas left in the wild. It is estimated that their numbers may have decreased by as much as 40% over the last 50 years due to massive habitat loss, increased human activity and poaching.

International conservation and science charity the Zoological Society of London (ZSL) works in Nepal, as well as over 50 other countries, for worldwide conservation of animals and their habitats, through ground-breaking science, conservation projects and two Zoos, ZSL London Zoo and ZSL Whipsnade Zoo.



BRAYSCOPE

Experts in commercial & domestic horticulture

For all your **Commercial**
and **Domestic** landscape
requirements

Professional and **Qualified**
landscape maintenance and
Construction company



Contact Kevin on

01525 220948 07949 601630

brayscape@aol.com

14 SCHOOL LANE, EATON BRAY BEDFORDSHIRE, LU6 2DT

Come for Coffee at St Mary's

For a warm
welcome and a
cheering cuppa
on the first
Saturday each
month in
St Mary's Church
Eaton Bray
10.00am - midday



Are you an elderly or
housebound resident ?

Would you enjoy a
monthly (free delivery) fish
and chip supper ?



If your answer is 'yes' to either of the above questions then please do get in touch.

We run this scheme on the last Friday of every month but need your orders no less than 48 hours prior to this. We have a voicemail facility on our phone if we are not there to speak to you directly. All messages will be confirmed back to you so you know your order has been received.

Please call on **01525 229 656** to place your order

Ordinary people doing amazing things





EDLESBOROUGH TENNIS CLUB

Website by Jupiterwill

www.etctennis.org

Play tennis Have fun Socialise Feel good Join our club

Join via the website, or call Iona McLean-Hall on 01525 220562 for details

Monthly
draws

New 100 Club

Spend £2 to
spend a penny

In aid of toilets and other improvements
at St Mary's Church, Eaton Bray



Contact: eatonbraychurch@aol.com or telephone: 222691

Eaton Bray Academy

The staff work exceptionally well as a team to promote children's welfare, learning and development and to make sure everyone enjoys their time at the pre-school. Ofsted 2012



Children benefit from the abundant shared resources, access to school assemblies, the information technology suite and the extensive outdoor facilities. Ofsted 2012

Pre School



How many Pre Schools do you know that are part of the Main School? Well, EBA is *one* School!

All the children wear School uniform, have their own book bag, can attend clubs and even eat our delicious School dinners, cooked on the premises by our own School cooks.

.We believe that quality Early Years education is essential; it is on this that everything is built.

We offer a caring, happy, secure and stimulating learning environment in which the children thrive.

Come and have a look!

Tel. 01525 220468 or email admin@eba.ec

Children clearly benefit and thrive as the accommodation, equipment and resources are well suited for their purpose and conducive to learning. Improvements to the premises and the outdoor area give children the confidence to explore and help all aspects of their development. Ofsted 2012

ravencounselling

Teresa Raven, accredited and registered member of the British Association for Counsellors and Psychotherapists (BACP).

Counselling offers you a safe, confidential place to work through difficulties, issues or problems you may be experiencing.

My pricing starts at £15 for an initial consultation, with further sessions priced from £40. Please contact me for more information, or visit my website.



www.ravencounselling.co.uk



ravencounselling@aol.com



07960 090113



facebook.com/ravencounselling

Make your next holiday a *Disney* one!
with one of our luxurious villas right on the doorstep



MINUTES FROM DISNEY



CHEAPER THAN A HOTEL



PROFESSIONAL FRIENDLY SERVICE

PersonalTouch
VACATION VILLAS

☎ 0845 5280 162

🌐 personaltouchvacationvillas.com

As former Edlesborough residents; we now own and run a family business in Florida, USA. Let us help make your Disney holiday as **PERFECT** as it can be. Our **private pool villas** (AKA 'home from home'), cater for all your needs and are **within 5 miles of the parks** - the perfect base for your trip.

Leighton Plumbing & Heating

Oil fired boilers
service, repairs
& installations



All other aspects of plumbing
& heating undertaken

Oftec registered & insured

01525 385250
07774 567472

11 Woodman Close
Leighton Buzzard
Beds
LU7 3NU

leighton-plumbing@ntlworld.com



Helping Hands
The Home Care Specialists

Est. 1989

Do you need a Helping Hand?

Our **local** care team has been providing award winning quality homecare since 1989.

We offer a homecare service **from 30 minutes per week to full-time Live-in Care**, which enables you or your loved one to remain at home with compassion and dignity.

To find out how we can help,
call: 01296 752 632 or
visit: www.helpinghands.co.uk

 **Stoten Gillam**
chartered accountants
chartered tax advisers

99 High Street South
Dunstable
LU6 3SF
Tel: (01582) 608601
www.stotengillam.co.uk

ICAEW CHARTERED ACCOUNTANTS   "Practical Solutions for Growing Businesses" 


W Roff Agricultural Services

- Hay & straw for sale
- Paddock maintenance
- Fencing

 07909 680807
ELSA GE FARM, CHEDDINGTON

Wednesdays
1pm to 2:30pm
(During term time)
Eaton Bray Village Hall
(Church Lane LU6 2BJ)

cheeky monkeys 

under fives play time

£1 per adult/child - Under 1 yr free

creative play 🍌 singing
stories 🍌 baby corner
craft 🍌 healthy snack

01582 699092 🍌
(Beehive Children's Centre)

 Come along,
make new friends
and join in
the Fun!

Coffee Tavern

Large Hall

£6.00 per hour

Commitee Room

£3.50 per hour

Large Hall &
Commitee Room

£8.00 per hour



Bookings 01525 220891

Stairlift and access ramp available

We are a nurse-led home care provider committed to delivering the very highest standards of care.

Support from our dedicated team gives you or your loved one the peace of mind and confidence to be able to continue living at home.

Family-owned and managed, we are independent and do not belong to a national chain or franchise. We are registered with the CQC, number 1-1499072841.



**your own
home care**
putting the nursing back into care

To talk to us about your requirements please call Helen Yates RGN on 07920887414 or 01442 843064 or email helen.yates@yourownhomecare.co.uk



www.yourownhomecare.co.uk



Some comments from our recent Ofsted report:

Children are consistently offered a stimulating range of activities and opportunities which enable them to make good progress towards the Early Learning Goals.

Staff have a good understanding of creating a safe and welcoming environment . . .

Staff support children well and encourage them to be active in their learning and to think critically.

We are a committee run playgroup operating five mornings a week 9:15 – 12:15 for children aged 2 to school age.

If you would like to find out if your child would be happy here, please phone our Playgroup Leader, Ann Tobin on 07816 358 342.

www.dagnallunderfives.co.uk

janes

Electrical Appliances, Bikes & Flooring Store

The Family Business with 130 years of recommendation



Free Delivery & Installation

On Kitchen Appliances & TV's

within a 15 mile radius (excluding installation on Gas & Built-in Appliances)

Sound Advice & Peace of Mind

4-8 High Street, Edlesborough, Dunstable, Beds LU6 2HS

Tel: 01525 220208 Fax: 01525 222802

www.janesltd.co.uk

GALRAL SERVICES

AUTOMOTIVE, AGRICULTURAL & PLANT MAINTENANCE

Modern, classic and vintage vehicles; servicing & restoration

Over 40 year's local experience in automotive industry

Agent for BEPCO tractor parts.

Agent for TRS restraint systems (ratchet straps)

Welding & fabrication services (sheet steel & aluminium)

Auto electrical and engineering works

Contact Simon

07785 278188

Fax/answer machine

01525 210597

GATES

Plumbing & Heating Limited

We'll help meet your heating needs

- Biomass boilers
- Air source heat pumps
- LPG central heating
- Oil and Gas central heating

Please contact us on:

01296 670445

info@gatesheating.co.uk

www.gatesheating.co.uk



We are Gas Safe, OFTEC, NAPIT
and MCS registered

Government funding for renewables

Simples Fitness

Fitness classes & individual fitness training

- * Circuit Training
- * Cardio Blast
- * Crazy Abs
- * Buggy Push
- * Box-Fit
- * Ski-Fit

Membership £35 per month or Pay as you go

Forget the gym...make fitness simples!

www.simplesfitness.com

MINI DIGGER WITH DRIVER FOR HIRE

Fully insured ↔ Competitive rates ↔ Based locally
Aggregates Supplied ↔ ↔ ↔ Tree Stump Removal

Contact Simon

07785 278188

Fax/answer machine 01525 210597



Electrical Services

www.rselectricalservices.com



**FULLY QUALIFIED
ELECTRICAL ENGINEER**

CPS Registered through NICEIC Scheme

Competitive prices and quality service

Available for all your domestic and
commercial electrical requirements

No job too small

Call Russell Sears:

07578 008567

01525 220008

17 Good Intent, Edlesborough



Greater One-Horned Rhino Born at ZSL Whipsnade Zoo

Keepers at ZSL Whipsnade Zoo are celebrating the birth of a greater one-horned rhino calf, born just in time for World Rhino Day (22 September).

Weighing in at a whopping 76kg (almost 12 stone), the calf, which keepers have named Bali (Nepali for 'strong') was born on the evening of Sunday 6 September after a 17 month gestation. This is the fourth calf for 19-year-old mother, Behan. Her other calves have all moved to other Zoos to breed, as part of the European Endangered Species Programme (EEP).



Bali is the 14th greater one-horned rhino calf to be born at ZSL Whipsnade Zoo, which has an exceptional record with its breeding programme for the species. ZSL Whipsnade Zoo was one of the first Zoos in the world to breed the species in 1957. In the past 12 months there have been only four greater one-horned rhino births in three European zoos, with only one other in the United States of America.

Deputy Team Leader Veronica Watkins, said: "The whole team are very excited to see the safe arrival of our newest rhino. To be involved

in bringing one of these endangered animals into the world makes all of our efforts feel worthwhile, and it makes celebrating World Rhino Day this year feel extra special.

"The labour was relatively straightforward. Behan was restless the previous night so we suspected the birth was imminent, but once her waters broke we were able to monitor her carefully through CCTV cameras, without interfering in the process.

"The following day Bali was up and about, looking around at everything inquisitively. Behan, who has always been an excellent mother to her calves, was staying very close to him."

Greater one-horned rhinos are classified as Vulnerable by IUCN's Red List of Threatened Species, due to illegal poaching and a decline in quality of habitat. Native to India and Nepal, there are thought to be less than 3,000 greater one-horned rhinos left in the wild.

International conservation and science charity the Zoological Society of London (ZSL) works in Nepal to monitor and protect greater one-horned rhinos through an anti-poaching task-force and working alongside local communities. ZSL's work in Chitwan National Park allowed the number of rhinos to rise from 100 in the late 1960s to 544 in 2000.



History of the Parish Magazine

A **parish magazine** is a periodical produced by and for an ecclesiastical parish, generally within the Anglican Church. It usually comprises a mixture of religious articles, community contributions and parish notices. Magazines are sold or are otherwise circulated amongst the parishioners of the relevant church or village. They are almost invariably produced by volunteers, usually working alongside the resident clergy. From their earliest days they have frequently been augmented by the inclusion of a nationally-produced magazine supplement or a regionally produced insert, such as a diocesan news leaflet or similar publication (and sometimes they might include both). It has been estimated that the collective readership of parish magazines exceeds that of many national newspapers.

Early history

Parish magazines were arguably foreshadowed by the sporadic printed notices or pastoral letters, issued to the local community by parish clergy or by the more senior clergy and found very occasionally amongst 19th-century parish archives. However the first regular parish magazine is generally recognised as being started in January 1859 by Rev. John Erskine Clarke, Vicar of St Michael's, Derby. (Rival claims have sometimes been made for Rev. W. J. E. Bennett's *Old Church Porch* issued at Frome in 1854.) Erskine Clarke had prepared a number of publications which were particularly aimed at children and which were designed to counteract the commercial publications then appearing. He later produced a sixteen-page periodical, which bore on the page headings the literal title *The Parish Magazine*. It contained

general interest material, often with a strong moralising edge. The idea was that this inset should be offered to parishes to include within their own localised covers, which would very often comprise no more than four printed pages.

Starting with fifty-four parishes, the circulation of the *Parish Magazine* was eventually extended to over two hundred churches. Whilst Clarke's inset continued to appear until 1895, competitors soon emerged and it was eventually overtaken by other alternatives. Many publishers began to produce rival insets - over thirty such examples have been described and listed. The last two of these national examples, *Home Words* and *The Sign* finally merged in 2009.

Where parishes opted to go it alone they clearly had to rely on locally-written material of variable quality. In fact throughout the years a significant variety of different formats will be found. A great many magazines have been redesigned, renamed or relaunched to reflect changing circumstances, or else they have been revived after an apparent hiatus. The earliest magazines had to be printed using expensive movable type methods. However from the 1900s onwards the invention of the stencil duplicator or mimeograph - frequently known as the Gestetner machine or Roneo machine - offered cheaper alternatives, which many editors were soon to adopt.

Sometimes groups of parishes - possibly based on a rural deanery - would reduce overall costs by working together to produce a corporate magazine, with contributions from each village. A few parishes eventually opted for simpler magazines or adopted newspaper-style formats, aiming to deliver these

without charge to every household in the parish. With the growth of inter-church cooperation after the Second World War, other magazines became ecumenical and were jointly published in association with local Methodist, United Reformed or Roman Catholic congregations. Alternatively they might eventually be absorbed into more general community titles, and some of the latter are now further issued in an online version. This pattern could become more widespread in years to come, since the future of traditional parish magazines clearly depends on sufficient volunteers coming forward. Obviously their survival will also be affected by the widespread decline in organised religion in the UK.

In January 2014 the *Daily Telegraph* reported on the imminent closure of the Haworth Parish Magazine – allegedly one of the oldest in continuous existence – after 115 years. The newspaper suggested that many similar publications were on the verge of extinction in their traditional form – victims of the digital age and the increasing use of parish websites or online social networking. However a few might eventually be rebranded as glossy quarterly periodicals.

Surviving examples of early parish magazines are usually included within the archives of the parish in the appropriate

county record office or diocesan record office – indeed the preservation of archive copies is explicitly required under the current guidance for the Parochial Registers and Records Measure 1978. Sometimes a conscientious editor may also have donated copies to a local library. However comparatively few parishes have managed to preserve long runs on a very systematic basis. Whilst some examples doubtless remain in private collections there are also likely to be hundreds of magazines for which only a few surviving copies can still be traced.

During the 19th and early 20th centuries quite a few individual parishes or subscribers had their annual sets of magazines bound up each year (with or without the national insets) and this has undoubtedly assisted in their survival. A number of examples may be traced via the online catalogues of individual county record offices, or via the **Access to Archives** website.

In recent years a small number of very early parish magazines have been reprinted in facsimile – either as curiosities or as a contribution towards the study of social history within their local area. They include a number of the early volumes of John Erskine Clarke's original *Parish Magazine*.

All Saints' Church, Dagnall

Services in November 2015

Sun. 1st Nov.	3.00 pm	United Service for the Festival of all Saints
Sun. 8th Nov	10.30 am	Morning Service
Sun. 15th Nov.	10.30 am	Family Communion
Sun. 22nd Nov.	10.30 am	Family Service
Sun. 29th Nov.	10.30 am	Morning Service
Sun. 7th Dec.	9.00 am	Eucharist
	10.30 am	Morning Service

Sunday School meets each Sunday at 10.30 am except when there is a Family Service.



Our September meeting was held in the Memorial Hall on 8th September, when our speaker, Sherry Scott MBE, spoke on the subject of 'My Life in Burma'. Sherry Scott was an awe inspiring speaker, who did not fail to invoke enthusiasm, admiration and amazement in her audience. The widow of the British Army commanding officer in Burma during World War 2, Sherry continues with his work in supporting the Burmese men who were part of the British Army. These men did not receive pensions for their war efforts and so Sherry's husband, who after the war, led a highly decorated and successful private life, took it upon himself to help provide financial support to all the men who had served under his command. He raised over one million pounds. After his death, Sherry continued with her husband's mission because he had had such admiration for the men, without whom, he was sure he would not have survived. After twenty five years, Sherry remains as energetic and enthusiastic as ever, working on behalf of the Burma Forces Welfare Association. The evening was filled with fantastic stories of Sherry's travels into the forbidden country of Burma under the hold of the Burmese Junta. Tales which involved Sherry being smuggled into the country from across Thailand's border, dressed in disguise and helped by the very men her husband had said he owed his own life to. No discomfort has been too much for Sherry. She has slept on bare wooden floors; once mistaking a cat for a cushion. Much of her work was carried out in the jungle, with no modern appliances and relying heavily upon interpreters. Sherry informed her audience of the best way of getting up from a night's sleep from

off the jungle ground was by rolling over onto one's front. Sore hips were a common feature of sleeping in such a manner.

No feat has been too great to overcome, including crossing a wooden bridge suspended between two mountains. Many of the teak slats were missing. Whilst crossing the bridge, holding tightly to the rope sides for dear life, Sherry wondered who had built the bridge. Sudden realisation dawned. It was the British 70+ years previously. That thought made her grip even harder. Coping with leeches was also another hurdle to jump over. Enormous leeches had managed to work their way through her boots. The only solution was to pour salt onto the unwanted guests. Snakes have also made their presence known; a total of three snake bites have occurred during her jungle journeys.

Awful atrocities have been witnessed by Sherry and yet she has been able to help by perseverance and knowing people in high office. One such example was the order from the Junta to rape women and girls. Having seen the consequences, Sherry was able to make contact via a telephone link with very high officials in the USA Air Force; which took one and a half hours to get through. Her request for a doctor was received and acted upon. A very senior doctor arrived via a helicopter and all night helped the victims. Before leaving he donated his medical bag. He told Sherry not to thank him and that he had 'lost' the bag. In recognition of his work the doctor was presented with an award.

Sherry has flown in planes, where cockroaches roamed freely. She also luckily survived to tell the tale of a landing strip having so many large holes, that on landing, the undercarriage was completely ripped off.

Undeterred by hardship and danger, Sherry remains determined to carry on with her aid. Her aim is to build a town. Land has been purchased in the north of the country, where a school, churches and a farm have been planned. The teacher's house,

a hydro-electric power scheme, and solar power computer schemes have also been planned. It seems as though nothing can stop this remarkable lady from carrying out unbelievable tasks.

✍ Jackie Flint

Edlesborough Book Group

The Human Factor by Graham Greene

This month's book, 'The Human Factor' was selected from all Graham Greene's many novels because of its local interest. Set mainly in London, one of its main characters, Maurice Castle, lives in Berkhamsted and the novel contains many references to the town. Graham Greene was the son of a Berkhamsted school headmaster and knew the area very well, consequently the descriptions are very authentic. This book was written towards the end of his life and drew heavily on his experiences in M16 with Kim Philby as his immediate boss and also draws attention to the moral dilemmas faced by secret agents.

The story concerns Castle and his younger colleague Davis, who work together for M16 in its African section. Castle previously worked in Africa and married out there, but now lives quietly with his wife and son and is looking forward to retirement in the near future. Unfortunately a leak has been discovered in his department, the senior staff have started an investigation and Castle and Davis are

subject to an inquiry. The description of this and the detachment and lack of empathy shown to both men by their superiors, is very well drawn. The story, from the outset, moves slowly and each character and twist of the plot is introduced with great skill and sense of timing. In fact this is a very well crafted book, which not only tells a very absorbing spy story with believable characters, but also tells us something of Greene's disenchantment with the Secret Service and the way its agents were treated. The plot is difficult to tell in more detail as it would spoil the enjoyment of anyone tempted to read the novel.

Overall the comments from our group were that we were grateful to have a good, well written book to read at last: we all enjoyed it. We also saw the film, made in 1979, which one of our members had thoughtfully recorded. It was interesting to compare the two, but as always, we were glad to have read the book first, which we recommend.

Dagnall Over Sixties

Our visit in September to the Wyevale Garden Centre at Bicester was very enjoyable. The food was delicious and as we had a private room, we were all together.

Wyvale had organized some extra pairs of hands to help with trays, and we had very good service from our own "waiter" who fetched and carried for some of our members. The variety of other shops in the complex was a great treat for those of us who rarely get a chance to browse. The Lakeland store

was very popular, as was Hobbycraft.

In October, we had our Sausage and Mash lunch with the Jolly Jazzers to entertain us afterwards.

On November 17th at 2pm in the village hall, Hugh Grainger is coming to speak to us on an intriguing subject "Do Plants Think".

On December 15th at 1.30pm in the village hall, we have our Christmas Lunch with crackers, carols and Xmas parcels.

Dagnall Weather Station (AONB)

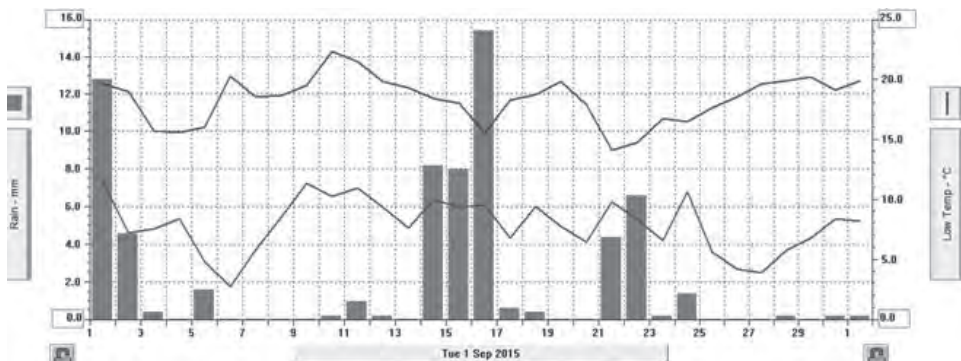
Weather Conditions for September 2015

Elevation: 450 ft - Latitude: 51° 50' 13" North - Longitude: 0° 33' 34" West

The month started with showery and cool weather which was brought in by north-westerly winds on the 5th we had better weather due to high pressure. In the middle of the month it was changeable it wasn't until the last few days when we had warm fine and sunny weather but cool nights. There was an air frost in the early hours of the 6th then on the 10th the temperature reached the highest 22.3°C. The rain was just above average and the wind was slightly below the norm.

	High	Date/Time	Low	Date/Time
Temperature:	22.3°C	10 Sept 15.30	2.8°C	6 Sept 05.30
Mean Temperature	12.7°C			
Dewpoint:	14.3°C	12 Sept 09.30	2.6°C	6 Sept 05.00
Humidity:	96%	17-21-27 Sept	45%	10 Sept 17.00
Barometer:	1037.0 mb	9 Sept 00.30	984.8 mb	16 Sept 16.30
Wind Speed	27 mph SSE	14 Sept 16.00	Months avg.	4.2 mph
Wind Chill:	21.8°C	10 Sept 15.00	2.3°C	6 Sept 06.30
Dominant Wind:	E			
Rainfall *T= total rain days and moisture. R= Actual rain				
*Rain Days: 18(T), 18(R)	Wettest Day 16 Sept		15.39 mm	0.606ins
Monthly Rain:	Total	Sept 2015	66.4 mm	2.543ins
Yearly Rain:	Total	9 Month	480.8 mm	18.929ins

Chart shows High and Low Temperatures and the Month Rain



For weather data 24 hours a day, updated every 1 mins, visit: http://bit.ly/weather_dagnall this site forecast and much more and the original site www.dagnallweather.co.uk

If anyone has a question, comment or wishes to contact me please email: david@dagnallweather.co.uk or telephone: 01442 843883

Dagnall weather now has an app for your ipad & iphone! Just go to the apple store, search for Wunderstation and follow the instructions to Dagnall Weather Station. Now updated every minute.



The Consumer Rights Act

Jonathan Vernon Smith is the Sony Award winning mid-morning show presenter for BBC Three Counties Radio. During his consumer

hour he helps listeners with their consumer problems and now shares his advice with you.

I thought this month it would be very useful for me to explain the new Consumer Rights Act that came into force on the 1st October 2015. I find it a little difficult to get too excited about it, as much of the consumer rights already existed, but at least the law has been clarified. Hopefully this will make life easier not only for us consumers, but also for the retailers, many of whom have been unclear about their obligations to their customers.

I think the most important changes to the law are as follows:

- **30 days to get a refund.** Although this was pretty much the case before, the law now makes it very clear that if a product develops a fault within the first 30 days, you are automatically entitled to a full refund. No more arguing what a 'reasonable' period of time is after the purchase date.
- **Failed Repairs.** Previously retailers could demand up to 3 attempts to repair the same existing problem. Now you are entitled to ask for a refund (or price reduction) after 1 failed attempt to repair. If you don't want either of these, you can request another repair or replacement at no cost to yourself.
- **Deductions from refunds.** Previously a retailer could take into account the use you'd had from a product when issuing a refund. Now, for the first 6 months after purchase they cannot deduct any money from a refund they issue. You should be aware that there is a clause that allows motor vehicle retailers to take usage into account.
- **Unfair terms in consumer contracts.** It is now easier for consumers to challenge

hidden fees and charges. The key terms of a contract, including price may be assessed for fairness unless they are both prominent and transparent.

As with the Sale of Goods Act, products should still be:

- **Satisfactory quality.** Goods should not be faulty or damaged when you receive them. They should also last for a 'reasonable' amount of time based on the amount of money you have spent on them. The more you spend, the more you're entitled to.
- **Fit for purpose.** They should do what they are supposed to do.
- **As described.** The goods must match any description given to you at the time of purchase.

You should also bear in mind that the law remains the same in terms of the time limits on making claims. For example, from the date of purchase to the first 6 months, the responsibility lies with the retailer to prove that the problem with the product has been caused by you, the consumer. From 6 months after the purchase date, the responsibility falls to you the consumer to prove that the product has an inherent manufacturing fault or has not lasted for a 'reasonable' amount of time. Any cost incurred to prove this, can be reclaimed from the retailer.

Of course, I hope that the new Consumer Rights Act will mean that we'll see an end to businesses treating customers badly. Sadly, experience has taught me that despite this new clarification in the law, there will still be those that flout it. As always, if you find yourself locked in a dispute with a retailer who's treating you like a fool, then please contact my programme for help. You can email me on jvsshows@bbc.co.uk (please include a daytime telephone number).





Salvation Sound



'Through the Keyhole' - Who lives in a house like this?

The television programme with this entitlement is in production once again, and we are privileged to be allowed to see how those well known celebrities live. What sort of 'house' is yours? Large, small, detached or semi, bungalow, cottage, farmhouse, or flat?

When I was small I lived in a house which had a 'private' room!! The door was always kept closed, it was called 'The front room'. We children had the run of the 'kitchen' at the back of the house, it was both dining room and sitting room combined. The scullery had a deep butlers sink, a boiler (not for central heating), the cooker, a dresser with a scrubbed topped wooden table next to it, high cupboards on the side wall were for dried goods, crockery, and meat dishes. We had a larder, with a meat safe and cold slabs. Upstairs were three bedrooms and a bathroom - the latter had a bath, but no wash basin, no shower, no toilet. The 'privy' was in the garden. We had lino on the floors, a carpet runner in the hall and up the stairs.

The 'Front' room, well that had a carpet square, arm chairs, a sofa, a polished table, four dining chairs, and a sideboard. Quite posh really!! Only visitors were allowed in there, except for twice a year, because on Christmas Day and Boxing Day a fire was lit and 'we' went in for high tea, after which we played games like ludo or snakes and ladders, but only if we were well behaved.

It was a pretty room with lace nets at the windows, and had heavy chenille curtains at the sides. It smelled of beeswax and lavender. There was a mantleshelf with candlesticks and figurines on it, and above that an enormous mirror. The walls had pictures of mountains with deer, or countryside scenes. Round the fireplace was a wooden fender, resting on it were brass tongs and a long handled brush and shovel, with a brass coal scuttle at one end and a brass log box at the other. In the corner was a grandfather clock that chimed. On the sideboard were photographs, two big vases and an oil lamp. The house was lit by gas lamps at first until they brought electricity to the village. We had a wireless and we listened to Children's Hour if our 'chores' were completed. I had to feed the chickens and rabbits, and dry the dishes. Mealtimes were different then; we had breakfast at 7am, dinner at 12 noon, tea at 4pm and supper at 6pm. Everyone sat at the table and nobody left it until the meal was finished!

How times have changed, rooms have different names, furniture is different, eating habits, even the food we eat is different, nothing seems constant. My old childhood home would never have won a prize, I don't think the one I have today would qualify either, but I like to think that happiness was and is part of life there, and God is ever present, as it says in Malachi "I am the Lord, and I do not change". Isn't that great?

In the Bible we can read of a room, an inner sanctum, that the High Priest alone had access to just once a year, in the temple in Jerusalem, the 'veil' or 'door' to that room was opened to us when Jesus died on Calvary for our sakes.

"Help us to help each other
Each others cross to bear;
Let each his friendly aid afford,
And feel his brothers care -
Increase our faith, confirm our hope,
and perfect us in love."

Then maybe, one day, we will live in the House of the Lord forever; not just look through a keyhole!

✍️Maureen

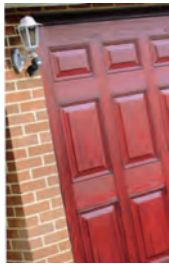


Premier Garage Doors & Gates



Quality Garage Doors

- ✓ Superb choice of designs in metal, wood and fibreglass
- ✓ Any size door made to your requirements
- ✓ Large selection of spares & fast repair service available
- ✓ New or existing doors converted to automatic
- ✓ Professionally fitted by own expert craftsmen
- ✓ Prompt free estimates & advice
- ✓ We cover all areas



(EST 1984)

DIY kits available
Insurance work welcome
Council approved
Remote control gates also available



Unit 7, Sparrow Hall Farm, Leighton Road, Edlesborough LU6 2ES

01525 220212

www.premiergaragedoors.co.uk

THE APPLIANCE & FLOORING STORE

@janes



Karndean
Designflooring

are you ready for
Christmas



Carpets
Vinyl
Laminate
Karndean
Wood
& Rugs



Sofas & Chairs

MADE TO ORDER

IN TIME FOR CHRISTMAS

Prices Start From

£10sq.m

On Carpets & Flooring

Our Additional Fitting Services

Moving of Furniture

Uplift & Disposal of old flooring

please ask for more details

Don't miss out on your fitting slot

01525 220208 Carpet Cleaner Hire from £19.99 24hr

4-6 High Street Edlesborough LU6 2HS