

FOCUS

July 2015



**The local village magazine just for Us!
Eaton Bray, Edlesborough, Northall & Dagnall**

The White Horse Inn At Eaton Bray

Market Square
Eaton Bray
Beds
LU6 2DG
01525 220 231
[www.thewhitehorseea
tonbray.co.uk](http://www.thewhitehorseea
tonbray.co.uk)



Midweek fixed price lunch
Monday to Friday 11.30am til 2.30pm
Great traditional pub dishes
1 course £6.50 : 2 course £10 : 3 course £13.50

**The White Horse
Wishes the
Carnival every success**
See the parade first at Market Square
Outside the White Horse

**JAZZ AT
THE WHITE HORSE
SUNDAY 5TH JULY**



Focus Magazine Committee

Joint Editor: George Crutcher

7 Summerleys, Edlesborough 221637

Email: george.crutcher@tiscali.co.uk

Joint Editor: Sally Siddons

34 Wallace Drive, Eaton Bray 221733

Email: sallysid@hotmail.com

Dagnall Representative: Sue Cawdell

10 Deans Meadow, Dagnall 01442 842200

Circulation Manager: John Plater

41 Church Lane, Eaton Bray 221095

Treasurer/Leaflet Enquiries: Ken Coates

10 The Nurseries, Eaton Bray 220868

Advertising: Sally Siddons

34 Wallace Drive, Eaton Bray 221733

Design and Layout: Tracey Moren

(Moren Associates Limited) 01525 229695

Printed by: PRIORITY Press

Dunstable 01582 699851

Copy for publication to the Editors by the

10th of the month

Focus accepts no responsibility as to the accuracy or content of any advertising or articles published in 'this' magazine neither do they reflect the opinion of members of the Committee.

© Articles published in Focus may not be reproduced without permission.

Focus would like to remind contributors that the deadline for articles is the 10th of the preceding month.

Kindly Note

If the event you wish to advertise falls in the first week of the month, it is advisable to get the details into Focus a month earlier. The magazines are not delivered from the printers until the first of the month, therefore it takes a few days for them all to be circulated throughout the village.

✉ Editors

WELLHEAD RESIDENTS

Dear residents of Wellhead,

Unfortunately we no longer have a volunteer to distribute Focus Magazine in Wellhead. Despite our efforts to locate a new distributor no one has yet been identified. Unless an offer is received we will be unable to continue distribution in this location and can only suggest that if you want to read the magazine, as long as there are any spares, you will have to pick up your copy from St. Marys Church Eaton Bray each month. Alternatively, the magazine can now be read "online".

We would like to take this opportunity to remind everyone that Focus is put together each month by a caring group of volunteers and no one on the committee receives any remuneration for their efforts.

Village Diary July 2015



Weekly

- Mon-Fri (term time) Eaton Bray Pre-school, Eaton Bray Lower School, 01525 220468
- Mon-Fri (term time) Dagnall Under 5's, Dagnall Village Hall, 9.15am - 12.15pm, Mrs Ann Tobin 07816 358342
- Mon-Fri (term time) Edlesborough Pre-School, Edlesborough School, 01525 220431
manager@edlesborough.bucks.sch.uk
- Mon-Thu (term time) Totternhoe Pre-school, mornings, Totternhoe Lower School, Michelle Urbanowicz on 01582 668841
- Mondays Pilates, 10.45am, St.Giles Church Hall, Totternhoe, Lisa: 07799 893489
- Mondays (term time) 2nd Eaton Bray Brownies, girls 7-10 years, Edlesborough Memorial Hall, 6 - 7.30pm,
Contact Sandra Counsell 07979 521900
- Mondays Dagnall Community Choir, All Saints Church 7.45 – 9.45pm
- Mondays Weight Watchers, 7pm, Eaton Bray Village Hall
- Mondays (term time) Movement and exercise classes with a dance flavour, Northall Village hall 2-3.30.
Contact Jan 01442 864271.
- Mondays Curtain Call Youth Theatre 5-7.30pm, Eaton Bray Village Hall, Gavyn 01525 220525
- Mondays Curtain Call Theatre Group - 7:30-10:30pm Eaton Bray Village Hall, Sheila -
sdtwinkletoes@yahoo.co.uk
- Mondays KFFA ISTD Classical Ballet classes, 3+yrs, 4.15pm, Edlesbrough Memorial Hall,
www.kfpa.co.uk
- Tuesdays Line Dancing, 1.30-3p.m., Eaton Bray Village Hall, Lyn Stubbs 220731
- Tuesdays Pilates, 10-11am, Eaton Bray Village Hall, Nicky Roussou 07861 162680
- Tuesdays Totternhoe Baby & Toddler Group, 9.30-11.30am, St. Giles Church Hall, Ruth Allen,
01525 222468 or 07796 265174 or email ruthallen002@gmail.com
- Tuesdays Northall Baby & Toddler Group, 9:30-11:30am, (open in the Summer School Holidays)
Northall Village Hall, Stacey Richmond 01525 222999/07957 607592
- Tuesdays Tap & Ballet Classes, JoAnn Latus School of Dance, 4-8pm, Eaton Bray Village Hall,
01582 620576
- Tuesdays Circuit Training - Edlesborough School Hall, 7-8pm - www.simplesfitness.com
- Tuesdays Coffee Morning, Bring & Buy, Table Top Sale, 10-12noon, Salvation Army Hall,
Booth Place, Eaton Bray
- Fortnightly Cheeky Monkeys Under 5's playtime, 1pm - 2.45pm, Eaton Bray Village Hall, contact
Rachel on 07789 760007
- Weds (term time) Pilates, 7.15pm, Northall Village Hall, Lisa: 07799 893489
- Wednesdays Egyptian Dance Class, 7.30-8.45pm at Eaton Bray Village Hall. Contact: Soraya on
07976 964316 for more details
- Wednesdays Northall & District Age Concern Wednesday Club, 10am - 3pm, Northall Village Hall,
Contact Anna on 07854 230243
- Wednesdays Dynamic Yoga 6.30-7.30pm £5 Eaton Bray Coffee Tavern Keira 07936 693696
- Thursdays Yoga, Northall Village Hall, 11.30am-1pm 01525 377542
- Thursdays Baby & Toddler Group, Salvation Army Hall, Booth Place, Eaton Bray, 9.30-11.30am
- Thursdays Keep Fit, Edlesborough School, 8pm Tel: 01582 668735
- Thursdays Jazzercise, 9.30-10.30am, Eaton Bray Village Hall, Angela Veryard, 01525 715208
- Thursdays KFFA Street dance classes 4+yrs 4pm, Edlesborough Memorial Hall, www.kfpa.co.uk
- Thursdays Central Bedfordshire Children's Centres' Toy Library, 9-9.45am, Eaton Bray (School
Lane) Public Car Park
- Fortnightly
- Fridays Keep Fit class, Edlesborough Mermorial Hall 10 - 11am
- Fridays Tap & Ballet Classes, JoAnn Latus School of Dance, 4-8pm, Eaton Bray Village Hall,
01582 620576
- Fridays (term time) "Little Luvvies" baby ballet classes 10am-11.30am. Contact Emma Whittemore on
01525 376124

Village Diary July 2015



Fridays (term time)	Kids Club 6:00pm to 7:00pm Grace Baptist Church, Edlesborough (across from the post office)
Fridays	Crazy Abs abdominal workout - 6:30-7pm, Edlesborough Memorial Hall - www.simplesfitness.com
Saturdays	Jazzercise, 9.30-10.30am, Eaton Bray Village Hall, Angela Veryard, 01525 715208
Saturdays	Drama Class for Children, 10.35am-12.35pm, Eaton Bray Village Hall, Claire Casey, 07792 508591
Saturdays	KFPA Musical Theatre classes 4+yrs www.kfpa.co.uk , 10am, Edlesborough Memorial Hall
Sundays	Sundays Worship at 11:00am and 6:30 pm Grace Baptist Church, Edlesborough (across from the post office) Barry 01525 229610 or Peter 01525 221048

Monthly

1st Monday	Eaton Bray Parish Council Meeting, 7.30pm, The Coffee Tavern
1st Monday	Eaton Bray W.I. Meeting, 7.30pm. Eaton Bray Methodist Church Hall. Contact Barbara Collier on 01525 221401
1st & 3rd Tuesday	Dunstable & District Orbit (social and charitable) Club meet at Dunstable Rugby Club at 8pm. For details contact 01525 222441 or 01582 755147
1st Saturday	St. Mary's church, Eaton Bray Coffee Morning & Plant Sale, 10am - 12 noon
1st Sunday	May to September, St Mary's Church, Edlesborough Open Day, 2-5pm
2nd & 4th Tuesday	TOTS, St Mary's, Eaton Bray, 2pm
2nd Tuesday	Dunstable & District Local History Society meeting, 7.45pm, Methodist Church Hall, Dunstable (opposite Wilkinson)
2nd Tuesday	Edlesborough W.I. Meeting, 7.30 pm, Edlesborough Memorial Hall
2nd Wednesday	St.Mary's Ladies Guild, 2pm, St.Mary's, Eaton Bray
2nd Wednesday	Eaton Bray & Edlesborough Lions Club, 7.30pm, The Coffee Tavern
2nd Thursday	CAMEO Coffee, tea & chat, 10am-12noon, Edlesborough Methodist Church
2nd Saturday	Workshops Dynamic Yoga 9.30-11am £10 Eaton Bray Coffee Tavern Keira 07936 693696
3rd Thursday	Edlesborough Parish Council Meeting, 7.30pm, Memorial Hall
3rd Sunday	Lunch club 11.30 to 2.00pm, Eaton Bray Village Hall, Chris Hewitt 222288
Last Saturday	Coffee Morning, 10-12 noon, Edlesborough Methodist Church

Other Regular Events

5th	Beds Area Narrow Gauge Model Railway Club Meeting, 11.30am-4.30pm, Eaton Bray Village Hall
10th	Leukemia Research Coffee Morning, 2 Dunstable Road, Dagnall 10.30 am. All welcome.
21st	Dagnall Over Sixties, Speaker and Tea in Dagnall Village Hall

One Off/Annual/Irregular Events

4th	St Mary's Village Carnival, 12:30 to 5pm The Green, Edlesborough. Procession leaves The Orchards Eaton Bray at 12:30pm
6th	Northall Village Hall A.G.M. 8pm
10th-12th	Swan Northall 2nd Beer Festival, 15 real ales & 5 ciders, BBQ & festival food menu. Live music on Friday and Saturday night, open mic on Sunday afternoon
18th	Ploughmans Lunches, All Saints, Dagnall, 12:30 to 2:30
21st	Dagnall School Open Afternoon, 3.30 - 5pm
25th-27th	Steve Backshall hosts Deadly Summer Shows at ZSL Whipsnade Zoo
26th	Open Garden Sunday, 11:30am to 5pm, Eaton Bray Village Hall, £5

Focus is now online at www.thefocusmagazine.co.uk

Village Notices

FOR SALE

Mary Mayne has now retired from teaching and has some small and medium sized quilts for sale. Prices range from £40. Anyone interested please contact Mary on **01525 220541**, email: **marymayne@tiscali.co.uk**

FOR SALE

**MENS GOLF TROLLEY -
BLACK £10
JUNIOR TOUR GRAPHITE
GOLF SET AGE 5-7
BAG, 6,7,8,9 PICH, PUTTER
AND METAL 5 WOOD
£28
TEL 07734 111654**

BBQ FOR SALE

Three Burner Gas BBQ

Two 64cm (25") x 49cm (20") cooking areas - one cast iron grill with lava bed under and one cast iron griddle area.

Hood with built in thermometer and warming rack. Uses (propane) patio gas cylinder. Overall dimensions: W 128cm, D 62cm, W 106cm. Could be partially dismantled for transport. £25

Call Jackie or Brian. **01442 843104**

FOR SALE

We had my dear old mum's favourite chair made by Lucas World of Furniture. She won't be needing it anymore so it needs a new home.



£69 including delivery to new home
Call John on **07768 362 089**

Lin Sargeant

Robert and Carol would like to express their thanks to all of the Villagers and friends who have expressed their sympathy following mum's passing on 21 May 2015. We have been overwhelmed with cards and words of kindness and it is comforting to know how popular, and liked mum was. This was more than evident by the amount of people at the beautiful service given by Coralie at St Mary's.

Thanks also to the staff at Rennie Grove Hospice and the carers who looked after her in her last few weeks together with friends who helped with lifts to hospitals over the last few months.

We shall miss her dearly but remember her fondly.

Robert, Carol and families

Village Notices

Focus is Online

Focus has now moved into the 21st century and can be found to read online at www.thefocusmagazine.co.uk. We can now offer this service, thanks to the hard work of both Theo Gray and Tracey Moren who have both contributed much to this progressive action. Obviously should you know of anyone who has departed our village (silly people) then please let them know of this new service, as they may wish to continue to keep up to date with our local news and gossip.

John Parker Deceased

Your kind and generous donations in memory of John have made it possible for us to send £800 to the Rennie Group Hospice at the Home Care Team who so superbly looked after him throughout his illness.

Thanks you so much
✍ Sue & Philip Parker

Philip Janes

Philip died peacefully at home
on 29th May aged 90
Mary and the family thank everyone
for your messages of condolence.



EDaN Community Transport

Peter Williams:
01442 842506

Village Hall Bookings

To book your local village hall for an event please contact the following:

Northall: Lorna Cabbage Tel: 01525 220361

Eaton Bray: Norman Lee Tel: 01525 222831

Dagnall: Elizabeth Coates Tel: 01442 842550

Edlesborough Memorial Hall: Penny Pataky, Tel: 01525 229358

Police Contact Numbers...

making neighbourhoods safer together

General Assistance (Recommended Number): 101 Emergency: 999

Bedfordshire Police (Eaton Bray)

Leighton Buzzard Police Station/Kathryn Horgan: 01582 473418

Typetalk: 18001 01582 473418

Email: LPT.LeightonBuzzardLinslade&Rural@bedfordshire.pnn.police.uk

Thames Valley Police (Edlesborough, Dagnall & Northall)

PCSO Jackie Dodson Mobile: 07800 703 524

Email: NHPT@thamesvalley.pnn.police.uk

Services at St Mary's Church

SUNDAYS : **8.00am** HOLY COMMUNION
 10.00am PARISH SUNG HOLY COMMUNION

On Third Sunday of each month:

10.00am – WORSHIP FOR EVERYONE a shorter, less formal service for families. (For anyone wishing to attend a service where Holy Communion is offered, there is a Family Communion at 10.30am at All Saints' Church, Dagnall, where visitors are assured of a warm welcome).

WEEK-DAYS:

Tuesday: **2.00pm** TOTS (Tots on Tuesdays) (2nd & 4th Tuesdays)

Wednesday: **10.00am** Holy Communion

EVERYONE WELCOME AT THESE SERVICES

All Saints' Church, Dagnall

Services in July 2015

Sun. 5th July 9.00 am Eucharist
 10.30 am Morning Service
Sun. 12th July 10.30 am Morning Service
Sun. 19th July 10.30 am Family Communion
Sun. 26th July 10.30 am Family Service with Holy Communion
Sun. 2nd Aug. 9.00 am Eucharist
 10.30 am Morning Service



Sunday School meets each Sunday at 10.30 am except when there is a Family Service

Eaton Bray Methodist Church

Edlesborough Methodist Church gave us a warm welcome for a joint service on the first Sunday in May. Our Cafe Worship on the second Sunday, led by Rev Nigel Wright, focused on expressing gratitude for the many things God has done for us and recognising that a life of service is the best form of worship. Our Sunday School Anniversary Service on May 17th was a sheer delight. It centred on the Junior Mission For All, a Methodist charity which funds inspirational work around the world. The young members of the church explained its long history and gave us an exuberant demonstration of projects in Nicaragua, Haiti, Zimbabwe and Pakistan. The service concluded with a prize-giving in recognition of all the year's achievements and

the dedication of the teachers and young folk. Ben Williams was our visiting preacher on our final Sunday in May. Reminding us that it was 'Aldersgate Sunday', in remembrance of John Wesley's conversion, he helped us to think about the transforming significance of Pentecost and the need to remain open to God's plan for us and glorify him in all that we do.

Our Annual Garden Fete on June 6th at Chestnut Lodge, Great Billington was a very happy event. The sunshine brought a large number of visitors to enjoy lunch and spend a relaxed afternoon in the stunning garden and we raised a handsome sum for Cancer Research. Many thanks to all those who helped and supported.

Focus is now online at www.thefocusmagazine.co.uk

A Letter from Rev'd Coralie

Vicar: Coralie McCluskey

The Vicarage, 11 High Street, Eaton Bray - Tel: 01525 220261

Honorary Assistant Priest: Revd John Heffer

Reader: Gordon Gray (220136)

Church Warden: Catherine Hayden (220527)

Email: admin@stmaryseatonbray.org.uk

www.stmaryseatonbray.org.uk



The third Sunday in July is Rural Mission Sunday. It is an important Sunday for those who live in rural areas and also for me as the St Albans Diocesan Rural Issues Officer. Rural Mission Sunday is an opportunity to remind one another that although we may consider ourselves to be rural and it's a pain having to go into Dunstable or Leighton Buzzard to shop, where we live is a far cry from the villages in North Bedfordshire and parts of Hertfordshire where public transport, a shop and Broadband may sometimes feel like a pipe dream.

The rural church can sometimes feel overshadowed by the larger urban church. On more than one occasion lovely well meaning people have proudly told me about the hundreds worshipping in their city or town centre churches where everything is vibrant and awesome. I did a placement in a city church, it was an exciting experience and I did enjoy it but at the end of three months I was ready to return to the calm of village life.

This year the Arthur Rank Centre is encouraging rural churches to celebrate all that is great about smaller churches. The focus in worship will be on bread, not just the bread that we eat but also the Biblical references to Jesus as the bread of life (John 6:35) and the story of the feeding of the 5000 (Matthew 14:13-21). In these days of choice it is easy to overlook bread, it becomes ordinary, disposable and yet for many in the world is the essential 'staff of life'.

Following the services there will be an opportunity to taste different types of bread, all of them home made with the exception of the Gluten Free loaf.

I will celebrate Rural Mission Sunday at All Saints, Dagnall on Sunday 19th July at 10.30am and at St Mary's, Eaton Bray on Sunday 26th at 8am and 10am. Following the 10am service at St Mary's we can then set off to visit and experience the delights of the Open Gardens in our villages.

If you are interested in Bread there's a good book called, *The One Loaf* by Joy Mead. It explores the making and the mystery of bread growing, making, baking, sharing in story and recipe, poetry and prayer. It's published by Wild Goose Publications.

Coralie

St Mary's Village Carnival 2015



The Sea

4th July 2015

Carnival is upon us! In fact if you receive this edition of Focus after the 4th July I hope you had a wonderful day and enjoyed both the procession and events on the green. If you have an early bird Focus delivery this month then get involved and have a great day!

Times to remember:

- Edlesborough green starts being prepared at about 7am. If you fancy lending a hand you can just turn up and there will be a free breakfast roll with your name on it.
- The procession starts gathering in The Orchards, Eaton Bray from about 10am onwards and the road will be closed to all vehicles except for residents.
- Judging of floats is at 11:40am and the procession leaves at 12:30pm arriving

at the green at about 1:30pm for opening of the carnival.

- The dog show starts at 12 noon so make sure your pooch is there in good time!
- The official time for stalls to begin opening is 12 noon but many will be open in advance .. so if you're passing the green take a look.
- Remember that roads on the route will be temporarily closed during the procession, see web site for route details, and there may be delays to some bus routes.

www.stmarysvillagecarnival.com

Have a great day and a big thank you to all that have helped organise and taken part in this year's event!



EATON BRAY PARISH COUNCIL



Please come and help to run your village **BECOME A PARISH COUNCILLOR**

The Parish Council is nine members of the public

We come to each Parish Council Meeting in the Coffee Tavern on the 1st Monday of each month and spend on average around five hours each month advising and helping to run our village.

At present we have two vacancies – will YOU come and join us?

If yes, please contact the Parish Clerk

You can also view our website for more details



Heidi Head, Parish Clerk & RFO

Email: clerk@ebpc.co.uk - Telephone/Fax: 01525 221464 - Website: www.ebpc.co.uk

Office Hours: Tuesday/Thursday/Friday 09:30-13:30hrs [messages can be left on answerphone]





UNICORN WINDOWS LTD

“WHERE QUALITY & SERVICE ARE NOT A MYTH”

www.unicornwindows.co.uk

Tel: 01525 854272



Unit 3 Youngs Industrial Estate, Stanbridge Road, Leighton Buzzard

comput@mation

computer support & services

Computer Support for Business & Home

Problem Solving:

Virus & Spyware Removal
Internet & Email Assistance
Fault Diagnostics
Repairs & Upgrades
Slow Running PC's

Sales:

Desktops, Laptops & Tablets
Printers & Peripherals
Software

Services:

PC, Mac & Linux Support
Wired & Wireless Networks
Data Recovery
Install & Set-up
Health Checks

On-site Visits:
Office Hours & Evenings
by appointment

For friendly advice call John Wallace: 07968 536068 or 01525 261381
Email: john@computamtion.co.uk
Web: www.computamtion.co.uk

Computamtion Services Ltd - Est.1999 with over 25 years experience
9a Lower Way, Great Brickhill, Buckinghamshire, MK17 9AG

Carpet & Upholstery Cleaning

Professional & Local

All work guaranteed - not happy, don't pay

Powerful equipment means drier much quicker than other methods

100% Guaranteed no chemicals left in carpet when dry therefore will not easily resoil & perfectly safe for children & pets

Recommendations account for 90% of my work

Absolutely no hard sell

Telephone Colin for a Free Quote

DEEP-CLEAN

01525 851 811

www.deep-cleaners.co.uk

Email: colin@deep-cleaners.co.uk

EDLESBOROUGH SURGERY

11 Cow Lane Edlesborough

Enquiries - 01525 221630 Appointments - 01525 220333

www.edlesboroughsurgery.co.uk

Dr J R Bell, Dr Heather Counsell

Dr Tisha Patel

Dr Stephanie Johnston, Dr Kirsten Riemer

Friendly village Practice offering a wide range of health services including coils/implants, minor surgery, travel advice, in house blood tests, on-line appointments and repeat prescription ordering. Four Nurse Practitioners offering acute clinics with same day appointments. Also, midwife, health visitors in attendance. Local District Nurse Service.

Long established training Practice with a rotation of qualified doctors.

EDLESBOROUGH PHARMACY

01525 223181

Pharmacist – Mitul Patel

Friendly reliable professional service at the pharmacy

All doctors/dentists/veterinary and hospital prescriptions dispensed

Professional advice always available

Herbal/Homeopathic products

Special Orders on request

Stagecoach Theatre Arts
 An hour to sing, an hour to dance, an hour to act... A lifetime to Perform!

Please contact the Principal, Wendy Ashman
01442 823181
 leightonbuzzard@stagecoach.co.uk
 www.stagecoach.co.uk/leightonbuzzard
 www.facebook.com/stagecoachleightonbuzzard



SING! DANCE! ACT NOW!



Theatre Arts Schools
Stagecoach



MMH
Plumbing & Bathrooms



City & Guilds
 Qualified

- Full Bathrooms Installations inc Design, Supply, Tiling
- All General Plumbing work from : Leaking Showers
 Dripping Taps • Toilets not flushing • Radiators • Drains

Call Mark for a **FREE** no obligation quote **01525 220994**
 All work fully insured and guaranteed. **07842 653832**

Barry Cato
Motor Repairs

— Est. 1981 —

Servicing, repairs and MOT's arranged
Workshop at:
 r/o Norfolk House Farm, Harling Road
 Eaton Bray, Dunstable, Beds, LU6 1QY
Tel: 01525 221681 (workshop)
07836 650015 (mobile)

30 Years Experience
Domestic & Commercial Security



Burglar Alarms
Redcare Monitored Systems
Intercoms
CCTV
Access Systems
Locks



CERTIFICATE NO. NACG/2113

Quality Installations – Competitive Prices
Insurance Approved **Free Surveys**

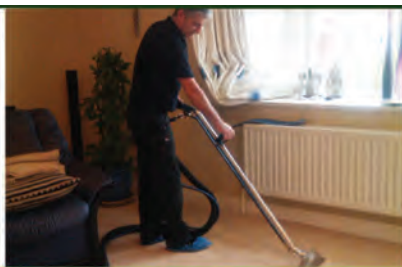
AAA SECURITY

01525 378222

Email: sales@aaasecurity.co.uk

www.aaasecurity.co.uk





Local family run business - Not a franchise

All chemicals used are Eco-friendly, non-toxic, non caustic and non allergenic
All work guaranteed and fully insured

All products are Child, Pet and Pregnant Safe

- Ovens & Hobs
- Extractor Hoods
- Microwave Ovens
- Agas
- Fridges
- Carpets
- Rugs
- Upholstery
- BBQs
- Freezers



☎ 01525 22 19 22 or 0800 122 3393

🌐 www.ecotechovenandcarpetcleaning.co.uk

@ info@ecotechovencleaning.co.uk

Dominic Woolcott

Painter & Decorator



- Internal & External
- Plastering & Coving
- Insurance Work
- 20 Years Experience
- Competitive Rates

**For a professional job call:
01525 229682 or 07747 042879**

P. DYER ELECTRICAL

For all your Electrical & Testing & Inspection needs

- Re-wires
- Testing & Inspection
- Security Systems/Lighting
- LED & Low Energy Lighting
- Decorative Lighting
- PAT Testing
- Fuse Boards
- Fault Finding/Repairs

Fully insured, Part P registered, all work guaranteed.
Fast, friendly, reliable, local electrician. For a free,
no-obligation estimate, call Paul on:



Tel: 01525 222109
Mobile: 07850 682815



David John Harris



(Established 1992)

All Fencing Work • All Gates • Paving • Patios
Driveways • Shingle • Hedge Setting and Cutting
Grass Cutting • Turfing Specialist • Exterior
Painting Service • Sheds Small Building Work
Trees & Shrubs Supplied

Tel/Fax: 01525 221745
Mobile: 07889 143713

WASHING MACHINE REPAIRS

ALSO
DISHWASHERS, TUMBLE DRIERS,
AND ELECTRIC COOKERS



Call
ANDERSON D.R.S.

01582 665764

www.andersondrs.co.uk
SALES AND RENTALS AVAILABLE



GYM & TONIC

WANT TO GET FIT, HAVE A
HEALTHIER LIFESTYLE & IMPROVE
THE WAY YOU LOOK & FEEL?

The following can be provided in our
Gym in Edlesborough or in your home

- * A Health & Fitness Consultation *
- * Personal Training * Massage *

Ruth Anderson Dip. PT & ST, Member of: Inst of Sports
Therapists & Register of Nutritional Therapists

Tel:01525 223074 Mob:07812 163979



For all your painting & decorating requirements
 Domestic and Commercial
 call Max for a free estimate with no obligation
maxbro@btinternet.com

Abbott Flooring

- Carpet & Vinyl
- Laminate & wood flooring
- Domestic & commercial
- Supply, fitting & adaptations
- Next day delivery
- All work guaranteed
- Free no obligation quotes
- No job to small

We provide a friendly, professional service at very competitive prices. If you require us to supply & fit or you just need some flooring fitted then give us a call.

Telephone 01525 220249
 Mobile 07958 244536



High Street Hair

66 High Street , Eaton Bray, Nr Dunstable, Beds. LU6 2DP

01525 221252

www.highstreethair.co.uk

Monday	Closed
Tuesday	9 - 6
Wednesday	9 - 6
Thursday	9 - 8
Friday	9 - 8
Saturday	9 - 5

A Professional modern salon, Providing
 Quality hair & nails services for the whole family.



JESSICA



TIGI®

think car, think...

smartAUTOGROUP



Established locally for over 10 years

Car servicing, M.O.T & repairs
Bodywork & maintenance
Mobile car body repairs
Accident & vandalism damage
Alloy wheels, scratches, dents, stone chips & scuffs
Fully equipped bodyshop & workshop
Complete diagnostic equipment
Dealer trained master technicians
Genuine parts



Competitive pricing – up to 50% cheaper than main dealers!

£10 off with this advert

Work Guaranteed • Free Vehicle Collection & Delivery • Customer Pick-Up & Drop-Off

Call us on **01582 664772** or visit www.smartautogroup.co.uk

Units 17 & 18a, Icknield Way Farm, Tring Road, Eaton Bray, Dunstable LU6 2JX



Bathrooms, Design & Installation

Tiling ♦ Heating ♦ Powerflushing ♦ Taps ♦ Leaks

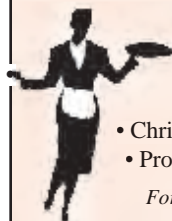
Call Outs ♦ Free Estimates Given



01525 222145



07971 559185



Patricia's Cuisine

Catering For All Occasions

- Buffets, Dinners •
- Christenings, Weddings, Funerals •
- Promotions & Business Lunches •

For Enquiries & Menu

Meadside Farm, 104 High Street,
Eaton Bray, Bedfordshire, LU6 2DP

Telephone: 01525 222174

P.J.BRINKLOW

Electrical Contractor

01525 220469

07860 781330

**43 Pebblemoor
Edlesborough**

pinstripes signs
pinstripes graphics
pinstripes clothing

01525 220485
07973 167779

BUSINESS CARDS

www.pinstripesigns.co.uk

find us on facebook
pinstripes signs graphics clothing

Mark Janes Contracts

**Felt Roofing - All Roofing Repairs
and Property Maintenance**

FREE ESTIMATES



t: 01442 877528

m: 07841 343470

e: mark.janes3@btinternet.com

Established 25 years

*Approved Contractor
for Local Authorities*

For all your building needs look no further



BRIGGS



BUILDING & CARPENTRY SERVICES

Established 1981

For a professional, friendly service call:

(01525) 221767

(07970) 214439

Domestic & Commercial

Extensions
Renovations
Conversions
Alterations

New Builds
Roof Repairs
Kitchens
Bathrooms

Patios
Driveways
Decking
Garden Walls

Mini Digger, Skip Loader and Dumper Hire

All Work Guaranteed

Free Estimates



When can I take it back?

Jonathan Vernon Smith is the Sony Award winning mid-morning show presenter for BBC Three Counties Radio. During his consumer hour he helps listeners with their consumer problems and now shares his advice with you.

So, you go to a clothes shop, buy a shirt, get it home and decide that actually you're not that keen on it after all. Simple! You can return it, yes? NOT NECESSARILY! Indeed one subject often up for discussion on my radio show on BBC 3 Counties Radio concerns the successful returning of goods to a retailer.

Let me make it very clear. If goods are FAULTY then of course you have the right to return them and depending on the length of time you have had them (usually only a few weeks), you should be entitled to your money back in full. If you've had the item for longer, then you can ask the retailer to either repair the item (if possible) or replace it. As I've said in previous articles, this applies long after the 12 month period, so don't be fobbed off by cheeky shop assistants! Remember your statutory rights – all goods purchased must be a) fit for purpose b) of reasonable quality (depending on the amount spent on them) and c) should last for a reasonable amount of time (again depending on how much you have paid for the item).

Where you don't automatically have the right to return items is when you simply change your mind. Whilst many retailers operate a 'good will' returns policy and will happily take items back as long as they are in perfect condition, the law does not guarantee this. Always check the returns policy of the individual

company before you make a purchase if you're not 100% confident you'll keep the item. Failure to do this could cause a very embarrassing scene in the shop and a may end up leaving with your tail firmly between your legs.

There is an exception to all of this though, and this exception is even more important now than ever before considering how many purchases are made online. When buying a new product from an internet or mail order company, you are covered by 'distance selling regulations'. These dictate that because you haven't had the opportunity to see the item you're buying in the flesh (as it were), you have 7 working days, from receipt of the goods, to return them for a full refund. Always confirm that you are returning the items by email to obtain a date stamp and please note there are exceptions to this including CDs, DVDs, perishable goods and underwear etc. Always check the sellers' returns postage policy as if they don't state who is liable for the p&p, then they automatically are!

It's also worth noting (using the shirt example I described earlier) that if you are **not** given the opportunity to try clothes on in the shop (i.e. they don't have a changing room), then you are also entitled to return goods simply because they don't fit or you don't like the colour after all. The best approach is that if you don't know the returns policy in the shop, then ask before you buy.

Finally, always keep your receipts and if you don't, remember that a bank statement or credit card bill should act as proof of purchase instead.



THREE COUNTIES RADIO
95.5 FM | 103.8 FM | 104.5 FM | DAB | bbc.co.uk/threecounties

Eaton Bray Parish Council

Highlights of the Meeting Minutes of the Annual Parish Meeting/ Annual Meeting of Eaton Bray Parish Council Held on Monday 11th May 2015 from 7pm at the Coffee Tavern

Speedwatch

To date the team have carried out three speedwatch checks, from those at least 122 vehicles have been monitored doing in excess of 36 mph through the parish. These checks will be ongoing during the next months.

Neighbourhood Plan

An application from Eaton Bray Parish Council to designate the parish as a 'Neighbourhood Area' has been made to Central Bedfordshire Council and a notice displayed accordingly

EBAT Team/Village Improvements

- Eaton Bray Bloomers - the team are continuing with the planting scheme for the village. More helpers always appreciated.
- Christmas Wreaths - very popular addition to the village Christmas festivities, Parish Council are looking at increasing the area in the parish for the wreaths to be displayed.
- Christmas Trees - White Horse/Three corners; very popular with parish, looking at doing the same for Christmas 2015.

accounts will be forwarded to the external auditors for 29th June 2015.

Election Of Chairman

Cllr. Windmill was elected as Chairman of the Parish Council.

Central Beds Council (CBC)

Website: www.centralbedfordshire.gov.uk - Customer Services: 0300 300 8302 / Email: customers@centralbedfordshire.gov.uk

A detailed list of services provided by CBC can be found by visiting:

<http://www.eatonbray.com/parish-council/files/central-beds-a-to-z-of-services-2014.pdf>

Bedfordshire Police:

Please remember if you need to contact the Police: Non-emergency call 101 / All emergencies 999

REPORTED CRIME - YEAR TO DATE					
RECORDED CRIME			ASB INCIDENTS		
Crime Type	01/04/14 to 30/04/14	01/04/15 to 30/04/15	Anti-Social Behaviour	01/04/14 to 30/04/14	01/04/15 to 30/04/15
Violence against the Person	0	1	Total	10	5
Sexual Offences	1	0			
Robbery	0	0			
Domestic Burglary	4	0			
Burglary Other	1	0			
Vehicle Crime	1	2			
Other Theft	2	1			
Criminal Damage	1	0			
Drugs	0	0			
Other Notifiable Offences	0	0			
Total	10	4			

Eaton Bray has had 5 reports of anti-social behaviour this month.

- 2 x Abandon Vehicles
- 1 x Parking issue
- 2 x Neighbour issues

Accounts For Year Ending 31 March 2015

The Clerk, as RFO, reported that parish council year end accounts have been completed, ready for approval at the Annual Meeting of Eaton Bray Parish Council on 11th May 2015. The final accounts were signed off by the Internal Auditor on the 8th May 2015, once approved by the Parish Council the

Football Pitches

Although EB Lions have been using two mini pitches on School Lane Recreation Ground for two years, the Parish Council is considering putting in place an official agreement for its use by the club. The council are writing to residents (owner/occupiers) of properties directly affected by the two mini pitches at school lane to obtain their opinion on the use of these

mini pitches.

Standing Orders/Financial Regulations/ Risk Assessment

The Parish Council adopted the Standing Orders, Financial Regulations and Risk Assessment for 2015.

Accounts For Year Ending 31st March 2015

The Clerk distributed details of the accounts for the Annual Return. It was agreed to approve the annual accounts, the Chairman signed the accounts on behalf of the Parish Council.

Next Eaton Bray Parish Council Meeting:

Monday 6th July 2015; 7:30pm at The Coffee Tavern (1st floor)

Parish Council Website: www.ebpc.co.uk

For full detailed copy of the minutes for Eaton Bray Parish Council please visit the Parish Council website.

A hard copy of minutes can also be viewed on the Parish Council's notice board at The Coffee Tavern.

✉ Heidi Head, Parish Clerk & RFO
Email: clerk@ebpc.co.uk - Telephone/
Fax: 01525 221464 - Website: www.ebpc.co.uk

Office Hours: Tuesday/Thursday/Friday
09:30-13:30hrs [messages can be left on answerphone]

Follow Eaton Bray Parish Council on Facebook and Twitter



Keep up to date with what is going on in your parish

Appledown's Rescue Dog of the Month



This is **Hoster Tully** a Staffie/Rottweiler less than a year old. He is a friendly and affectionate boy and is good with other dogs.

He is rather immature for his age and will need owners who are willing to work on his training but he is clever and quick to learn. Hoster needs a home with plenty of company as it will take him time to learn to be left on his own for short periods. He cannot live in Luton.

If you feel you could offer Hoster, or any of our other dogs, a loving and secure home please call in at the kennels any day

between 10 a.m. and 4 p.m. Our staff will be happy to offer advice and information. Please note that we have restrictions on rehoming dogs to families with children under 7 years of age. Full details of the rehoming process can be found on our website or call the kennels.

**Appledown Rescue and
Rehoming Kennels
Harling Road, Eaton Bray
Beds LU6 1QY**

Call 01525 220383 or e-mail:
appledown.kennels@btinternet.com

Join us on Facebook.
Visit our Website:
www.appledownrescue.co.uk

Reg Charity No. 1116848

Edlesborough Parish Council News

Including Edlesborough, Dagnall and Northall

Lin Sargeant

The Parish Council is very saddened at the loss of Lin Sargeant. She will be sorely missed by the Parish. She worked with dedication and tirelessly for the Council as Clerk and RFO for many years. Her Parish knowledge and recall were extensive. She could always be relied upon to help and the village will be a much poorer place without her. The Council send their love and condolences to her family and friends.



Allotments

The council currently has one plot available to let at the Northall site, anyone wishing to rent this should contact the Clerk.

The council reminds all tenants that the use of hosepipes on the allotments is strictly forbidden. Any tenant found to be regularly using a hosepipe will risk having their tenancy terminated.

New Trees

The EDaN Beautification team are currently developing a tree planting program for the village of Edlesborough. Any parishioner wishing to sponsor a tree should contact the Clerk to register their interest.

Streetlights

Currently there are five reported faulty streetlights within the Parish; the Council have agreed to add these lights to Phase One of the streetlight replacement program instead of repairing them.

Please remember to report faulty streetlights to the Clerk.

Defibrillators

Following a very informative demonstration by the South Central Ambulance Service

the Parish Council are now considering the installation of defibrillators within the parish.

Community First Responders

Anyone wishing to know more about becoming a community first responder should contact the Community Responder Manager on 0800 587 0207 or cfr@scas.nhs.uk More information will appear on Facebook and in subsequent issues of Focus.

Edlesborough Parish Council Cemetery

Work is continuing on the levelling and seeding of some of the graves in the Cemetery. Parishioners are reminded that Edlesborough Cemetery is a lawn cemetery and the planting on or around graves is not permitted. Please would friends and relatives remember these rules also apply to the cremated remains areas; pots of plants surrounding the memorial stones will be removed and disposed of. Any items contravening these rules will be removed. A full copy of the rules and regulations of the cemetery can be obtained from the Parish Clerk.

Traffic Management

The EDaN Traffic Management team is keeping up the pressure on the three MPs that cover the A4146, fortunately all were re-elected to parliament. Pressure is also being applied to County Councillors to push to get the road re-classified to a 'B' road when the new M1 link opens. This will enable HGV restrictions to be placed on the road.

The team had a very positive meeting with Ruth Vigo-Hedderly BCC regarding the 7.5 tonne restrictions on HGV vehicles, Ruth was working with Stephen Woolford BCC who is working on a project with Beds and Herts.

Noisy Planes

Following an question raised by a Parishioner anyone wishing to report noisy aircraft should do so using the following link <http://www.london-luton.co.uk/en/noisecomplaint/> or by telephoning the Noise Complaints line 01582 395382

Parish Council Vacancies

Following the recent elections there are currently two vacancies on the Council, one for the Ward of Edlesborough and one for the Ward of Dagnall. Any person wishing to be considered for the role of Councillor should contact the Parish Clerk for more information.

Parish Council Website

The Parish Council are still experiencing technical issues with their website. It is hoped that these issues will be rectified soon. If, in the meantime any person wishes to see a full copy of the minutes for

the Parish Council meetings please contact the Clerk who will be happy to assist.

Edlesborough Parish Council Meetings

The next Edlesborough Parish Council Meetings will take place in Edlesborough Memorial Hall on Thursday 16th July and Thursday 17th September 2015. Both meetings will commence at 7:30pm.

All Parishioners are welcome to attend and may ask questions, raise issues and give suggestions during the Open Forum.

The full minutes of the Parish Council meetings are normally available to view on the website.

Contact Information

Clerk to Edlesborough Parish Council:

Clerk: Penny Pataky 01525 229358

Email: clerk@edlesborough-pc.gov.uk

Website: www.edlesborough-pc.gov.uk

Facebook:

www.facebook.com/EDANParishCouncil

Open Gardens 2015

Sunday 26 July, 11.30 – 5pm

Roving Tickets £5 from Eaton Bray Village Hall - 11.30am

Since 2006, one of the social highlights of the year in our villages has been our Open Gardens event. This year will be the eighth year that gardens have been opened by willing gardeners in our villages and both visitors and gardeners have enjoyed some wonderful days.

Until this year Open Gardens has been held on the second Sunday in June but this year, because of a clash with a major service at St Mary's, we have had to change the date to the end of July. This means, of course, that even gardens that have been opened before will appear quite different from how you remember them, with other plants being at their best.

This year eight householders have kindly agreed to open their gardens and I'm sure you will be delighted by the fantastic range they represent; four of the gardens have

not been opened before. The gardens range in size, style and content that we hope they will delight you. As usual, during the afternoon there will be a plant stall and refreshments will be served in Eaton Bray Village Hall; refreshments will be available en route.

Do make sure the date – Sunday 26th July - is in your diary. We look forward to seeing you once again. It should be a tremendous afternoon for everyone interested in gardens and, given kind weather, all concerned should have a lovely time.



The London Mayoral Election

An article from our newest and probably youngest contributor - Charlie is 17. We always pleased to have items from the younger members of the community to keep us on our toes!

The General Election is now over. MP's have finally started to relax, and party supporters have just about settled back into their normal lives again. But as with everything, once something big is over, the next is just around the corner. And that thing is the 2016 London Mayoral Elections. The election to decide who will take over the position from our favourite blonde mopped Mayor, Boris Johnson.

As with the Labour leadership election, there have been a number of both prominent, and less prominent figures who have 'thrown their hat into the ring', and as at time of writing this, here are a few of some of the most interesting.

Ivan Massow, the gay Conservative entrepreneur who previously defected to the Labour party, and then back again. Ivan was the first to catch the medias eye in the Mayoral Campaign, due to a video that he made. The video has been both criticised and praised, but the thing that everyone can agree on is that it feels a bit strange. The way that the video opens silently, until a forced and artificial sounding voice-over by Ivan plays over the top of a creepy cartoon. He then shoots off a series of one-liner descriptions about himself. "I'm gay. I'm an ex-alcoholic. I'm dyslexic [a sign pops up depicting backwards letters on it]. I'm adopted. I'm an activist. I'm a businessman. I'm a disruptor. I'm a doer [Ivan Massow zooms around the screen like a kids cartoon character]." It all just feels a little bit strange, but nonetheless, I like Ivan, and I am interested in seeing the rest of his campaign.

George Galloway, the leader of the Respect party. George is an interesting character to say the least. He seems to throw his hat into any ring, as long as he thinks it will gain him attention, and then when he loses (he always loses), he tends to complain that it was rigged. You either love him or you hate him, but I think it's safe to say that I'd rather trust a wooden plank with a smiley face on it with the position of Mayor of London, than George Galloway.

Sol Campbell, the former England football player, turned Conservative campaigner. Sol is an interesting candidate based purely on the fact that I don't think a professional football player has ever stood for Mayor of London before. He seems like a nice and genuine guy, and he has been doing a lot of campaigning recently, so I would throw Sol Campbell down as a prime Conservative candidate with some good odds in his favour.

Dianne Abbott, Labour MP for Hackney North and Stoke Newington. With no confirmation yet from Chuka Umuna on whether he will be persuing the role of Mayor, I would place Dianne Abbott at the top of the Labour candidate list. She is outspoken, engaged, and she seems to crave a leadership role after her unsuccessful attempt at becoming leader of the Labour party in 2010. For these reasons, I am interested in seeing how she progresses through the campaign.

And finally, **Zac Goldsmith**, Conservative MP for Richmond Park. Zac is my personal favorite candidate for Mayor. He is enthusiastic, and he seems to think outside of the box and see things in a different perspective to not only his fellow candidates on the list, but other MP's in general. He is an environmental activist,

an advocate for direct democracy and the use of referendums, and a rebellious backbencher, and I think he would make an interesting Mayor if given the position. I believe there are a wide range of diverse and interesting characters standing for a chance to be Mayor, and like everyone else in the country, I haven't the faintest clue as to how it will all turn out. What is clear, is that it won't be long until the leaflets and the canvassers are brought back onto the streets and to doors across London, just as we're beginning to settle down from the last one.

But how does all this fancy metropolitan stuff affect me?

Just because it's the London Mayoral Election, doesn't make it any less important here in the countryside. We are not only going to feel the full effects and force of the various campaigns that will be taking place and occupying our news, but we will also feel first and second hand impacts from the Mayor that is eventually elected. Remember, many of these candidates who are running as Mayor of

London, are, or have been MP's. Not just MP's from London, MP's from all around the country. A lot of them also live or have lived in places all around the country. To put it bluntly, these people have interests outside of the big capital, and some of those interests are fairly close to home.

Zac Goldsmith, for instance, is an avid anti-Heathrow expansion activist, and takes this matter so close to heart, that he threatened to leave the Conservative party if the Prime Minister sided with the closer airport to us.

And if George Galloway was to become Mayor, nowhere would be safe.

We live in a time where the big steel centre known as London does affect the rest of the country, especially places like Bedfordshire, Buckinghamshire, and Hertfordshire, which are only 40 minutes or so away from the big city. Both economically and socially, we will feel the full wrath of the Mayor-to-be, and whether it will be positive or negative - well, time will tell.

✍Charlie Nash.



EDaN Buses & Transportation

Community Car Service for Dagnall, Northall and Edlesborough



I would like to thank all our lovely drivers who turned out for our "Annual Thank You" gathering at the Red Lion public house in Dagnall on Tuesday 12th May. 25 of our drivers managed to make the meeting and enjoyed a very pleasant evening. Thank you to all of those drivers who have returned their questionnaire, if the rest of you could return them asap that would be very helpful and remember also to let Peter know your holiday dates in good time so he

can plan accordingly. We also had one lovely lady, who come to the Thank You meeting, who is going to use Community Transport for a while and then she has very kindly offered to be a driver for us when she is better, how wonderful is that!! It never ceases to amaze me what people will do to help their fellow villagers. I would also like to thank Ed and Debbie, at the Red Lion for allowing us to use their premises for our meeting.





Steve Backshall Hosts **DEADLY** Summer Shows at ZSL Whipsnade Zoo Saturday 25th to Monday 27th July

Young wildlife enthusiasts and fans of BBC's **DEADLY** series will want to flock to ZSL Whipsnade Zoo this summer, where they can watch **DEADLY Summer Shows**, presented by Steve Backshall himself.

The UK's largest Zoo is launching its 2015 **DEADLY Explorer Trail**, with a weekend of live demonstrations, featuring Steve Backshall and a whole host of **DEADLY animals**.

On Saturday 25, Sunday 26 and Monday 27 July, Steve Backshall will host four 30-minute **DEADLY Summer Shows** each day, each ending with a Q&A in which children and young people are invited to ask extreme questions about their favourite creatures.

Last year, over 72,000 visitors took part in the all-new **DEADLY Explorer Trail**, which enables children to discover more about animals and their habitats by solving a number of **the show's famous challenges**.

In this year's all new trail, which runs throughout the summer holidays, young visitors can learn the skills needed to track animals at the **DEADLY Detectives** station and then use their

various senses to identify them through **DEADLY Sounds**, **DEADLY Touch**, and even **DEADLY Dung!** Every explorer should look the part too, so children can also have their photograph taken, adventurer-style, at **DEADLY Dress Up**. Both the **DEADLY Summer Shows** and the **DEADLY Explorer Trail** are free to Zoo visitors. Normal admission fees to the Zoo apply.

The unmissable **DEADLY Summer Shows** take place within ZSL Whipsnade Zoo's 600 acre site, in which visitors can discover Asian elephants, tigers, brown bears, lions, giraffes and a brand new Butterfly House. Book your free **DEADLY Summer Show** ticket now at www.zsl.org/deadly.



Thinking of Selling or Letting?



Our success is built on our reputation of excellent customer service.



www.christopherpallet.com



Offices in Edlesborough, Wendover & Aylesbury

65 Moor End, Edlesborough, Bucks, LU6 2HN ♦ T 01525 222333 ♦ F 01525 222042 ♦ E edlesborough@christopherpallet.com

IRON OUT

Complete Laundry Service
Shirt Service
Duvet Cleaning
Ironing

Free collection & delivery from home or office

01582 667332 / 07885 320042

Email: ironout@aol.com

D NICHOLSON PLUMBING REPAIRS and INSTALLATIONS

NO JOB TOO SMALL

- Emergencies • Free Estimates
- No call out charges



Dave Nicholson

MOBILE: 07976 975604

HOME: 01525 872335

City & Guilds
Qualified

R.J.O'CONNELL BUILDING SERVICES

EXTENSIONS, PATIOS,
DRIVEWAYS, ROOF REPAIRS
AND PROFESSIONAL
DECORATING SERVICE

TEL: 01296 681323

MOB: 07855 236726

Will Kimberley Garden Services 01442 255784

Phone for a free no obligation written estimate
wkgardenservices@btconnect.com

- High hedges a speciality
- Fences erected and repaired
- General garden tidy up's
- In fact any job in the garden!

Make a Will

AND LASTING POWERS OF ATTORNEY

Protect Your Home 100%

YOU DECIDE, who is to run your affairs, who gets what, guardians etc, not the State.

MINIMISE RISK of Inheritance Tax and the disinheritance of children.

Best Price Guarantee

from specialist Solicitors and professional Will Writers since 1999

FREE HOME VISIT

For a **DAYTIME** or **EVENING** appointment call

01525 220644

www.wisechoicewills.co.uk

from
CARE FEES
and
PROBATE COSTS



Will Trusts & Probate Practice

A wise choice

MAKING A WILL HAS NEVER BEEN EASIER

ASPECT

YOUR LOCAL ELECTRICIAN
TOTTERNOE
OVER 20 YEARS EXPERIENCE

ELECTRICAL

CONSUMER UNIT UPGRADES (FUSE BOARDS)
LIGHTING - INTERIOR, EXTERIOR & SECURITY
REWIRING
NEW INSTALLATIONS
TESTING & INSPECTION

ALL WORKS TO CURRENT WIRING & BUILDING REGULATIONS
PART P CERTIFICATED & FULLY INSURED



CALL STEVE ON
07976 283969 / 01582 665068
aspect@sparky.me



EXCEEDING EXPECTATIONS IS JUST PART OF OUR SERVICE



If you're **selling**, **letting** or **buying** a home, make it happen with your local estate agent



01525 220605 • info@giblinproperty.co.uk
www.giblinproperty.co.uk

THE WORKTOP SPECIALIST

DELIVERING OUTSTANDING QUALITY & SERVICE FOR ALL YOUR WORKTOP & JOINERY NEEDS FOR OVER 50 YEARS

- FREE HOME MEASURING SERVICE
- CUTTING & EDGING SERVICE AVAILABLE
- VISIT OUR BRAND NEW SHOWROOM

Abbey Gate, Boscombe Road,
Dunstable, Bedfordshire, LU5 4FA

Tel: 01582 668 973 Fax: 01582 608 227
Email: sales@dunstablelaminates.co.uk
Web: www.dunstablelaminates.co.uk



@DLaminates



Dunstable Laminates



D R Property Services

Kitchens
Bathrooms
Repairs & Improvements

01525 237498
07970 260518

drpsuk.pt@gmail.com




Café masala
Exquisite Indian Cuisine

We Cater for Office or Private Parties and don't forget to try our Sunday Buffet
10% Discount on all Takeaway Orders Over £12
Fully Licensed & Air Conditioned
Open Seven Days a Week
Hours: 12 Noon to 2.30pm & 6.00pm to 11.30pm
Tel: 01525 22 22 64
63 Bower Lane · Eaton Bray · Dunstable · Beds · LU6 1RB
email: taraque@hotmail.co.uk · www.cafemasala.com

Anne Johnson D.O.
Registered Osteopath

6 Moor End,
Eaton Bray

01525 221958
07957 250682



I'M REGISTERED
Registration no.1495
www.osteopathy.org.uk

alto window cleaning

A reliable and professional service.....

- Window Cleaning
- Conservatory Cleaning
- Fascia & Gutter Cleaning
- Solar Panel Cleaning

T: 01525 234120
M: 07807 973871

AARON FENCING

ALL TYPES OF DOMESTIC & COMMERCIAL
FENCING & DECKING WORK UNDERTAKEN

FREE ESTIMATES
FULLY QUALIFIED & INSURED
PERSONAL SERVICE AT COMPETITIVE PRICES

TEL: 01582 665779
MOBILE: 07798 927272

7 STATION ROAD, DUNSTABLE, LU5 4HS

Buy Direct From Our
Own Farm

Master Card

VISA

From **Ivinghoe Turf**

- Commercial & Domestic
- Small Orders Welcome
- Bark, Grass Seed & Fertiliser
- Laying Service
- Discount on Larger Orders
- Screened & Blended Topsoil
- All Year Availability
- Forklift Delivery Available



ROLAWN[®]
Approved Rolawn
Stockist

Family firm farming since 1949

ALL AREAS

Freephone :

0800 043 5061

www.ivinghoeturf.com

The Bungalow, Vicarage Farm, Ivinghoe, Leighton Buzzard

YEARDYE

Luxury Bathrooms

A family-run
business for
over 25 years

DESIGN
SUPPLY
INSTALLATION



www.yeardyeluxurybathrooms.co.uk

email: bathrooms@yeardye.com
T: 01296 706220 T: 01525 222717

ARC Contract Services Ltd

- Painting & Decorating • Plastering
 - Wall & Floor Tiling • Door Hanging
 - Bathroom & Kitchen Installations
- 20 years experience

All work guaranteed and fully insured

Call Adrian : **01582 539179**

Mobile : **07789730580**



WESTROPE BROS.

LAWN MOWER SERVICES

ALL TYPES GARDEN MOWERS SERVICED

THE RYE, EATON BRAY

Tel: Eaton Bray 220587

Gas Boiler Servicing

Over 40 years experience

Have your boiler serviced by a **Gas Safe**
and **CORGI** registered engineer

Other services available:

Maintenance, repair and installation of all domestic gas appliances including LPG. Boiler installations, Landlord Safety Certificates and Power flushing.

Free Quotes, no call out fee, and free friendly advice on all of the above.

Edwards Gas & Heating Services

Eaton Bray



Tel 01525 220626

www.edwardsgasandheating.co.uk
stevethegas@orange.net



Vicky

The Dog Grooming Specialist
www.vickysdogcare.co.uk



With a reputation for offering an exceptional personal service



- Over 29 years of professional experience
- Trained at the London Academy of Professional Groomers to the highest City and Guilds standard
- Dorwest Veterinary Trained
- Member of the Pet Industry Federation
- Sympathetic and gentle handling of all dogs
- **FREE** Health check with every grooming session
- **No cages used! No cage dryers!**
- One to one personal attention.....loads of TLC

Where Dogs Come First!



Mobile: 07796 445416

Telephone: 01525 222775

Email: enquiries@vickysdogcare.co.uk



Committed to the highest standards of animal welfare and customer care

Over 30
Years
experience.
FREE
Quotes

Misty Double Glazing?

Over 30
Years
experience.
FREE
Quotes

**KEEP YOUR WINDOW FRAMES...
... WE JUST REPLACE THE GLASS!**

- UPVC • Aluminium • Or Wood

Because we replace just the glass the repair is a
Fraction of the cost of a complete replacement window.

BEFORE



AFTER



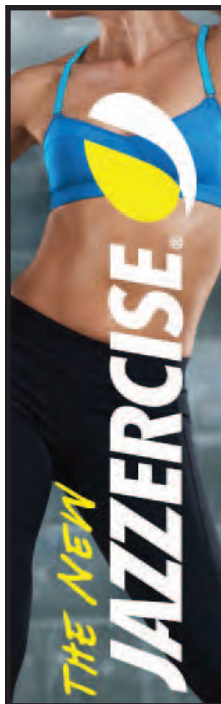
mistydoublinglazing.co.uk

QUALITY GLAZING SERVICES

01525 876808

WE ALSO REPLACE BROKEN...

- Glass • Handles • Hinges & Locks
- AND REPAIR...Patio Doors & Conservatories!**



**JAZZERCISE
DANCEMIXX
CLASSES
AT ST MARY'S
EATON BRAY
9.30am
THURS & SAT
AND
BREWERS HILL
DUNSTABLE
7.45pm
MON & WED**

**01525 715208
angelajazzercise
@gmail.com**

REVIVE HOLISTIC THERAPY

Holistic therapies are concerned with treatment through massage, manipulation and relaxation. They are not only treatments for one physical ailment or one part of the body, but also treat the person as a whole.

Ideal for today's stressful lifestyles.

Treatments include:

- Aromatherapy Massage
- Indian Head Massage
- Hot Stone Massage
- Reflexology
- Reiki

Vouchers are available for any treatment, so why not treat a loved one or friend as well as yourself.

Edlesborough based. For more information or to book an appointment call
Kate Meredith IIHHT, RGN, on **01525 221380**



*HPC Registered
CHIROPODIST & PODIATRIST*



(Also Central Luton surgery - open 6 days)

*Stuart Ball
Ceramic Tiler
Specialist
at all aspects of
Wall & Floor Tiling
Over 32 yrs Experience
01525 229381*



Stephen D. Janes

(Established in 1982)

**CARPENTRY, JOINERY
KITCHENS FITTED
PROPERTY MAINTENANCE
TELEPHONE: 01525 220649**

**G & J Groundwork
Ring Garry**
01582 477568
07949 118011

**Fencing Panels • Blockpaving • Paths
Shingle Drives • Slabs • Paving
Steps • Gardenwalls • New Patios
Relaying • Soak Aways • Drainage
Free estimates or advice • References
www.gandjgroundwork.co.uk**

Neil Hodson Associates

*BUILDING DESIGN
STRUCTURAL ENGINEERING*

**PROFESSIONAL BUILDING DESIGN,
ADVISORY AND DRAWING SERVICES**

From plans for domestic extensions
to multi-storey offices, commercial
buildings and factories.

Structural surveys, site surveying,
advice on building defects and
Feasibility Studies

Planning Applications and Building
Regulation Consents obtained.

**24 HIGH ST TRING
Tel 01442 890894 OR
Edlesborough 222462**



At Ian Waldron Photography we strive to capture images that are both relaxed and natural. We do this with little fuss or intrusion so you can enjoy one of the most special days of your lives! This is also true of our portraits which are all done on location which captures you and your family perfectly.

Ian Waldron
naturally relaxed photography

www.ianwaldronphotography.com
01525 221479
Your Village Photographer



**WE NEED
YOU!**



Make a valuable contribution to your local community by becoming a volunteer community first responder (CFR).

South Central Ambulance Service NHS Foundation Trust (SCAS) run CFR schemes in Berkshire, Buckinghamshire, Hampshire and Oxfordshire, but is funded by charitable donations (*Registered charity numbers 1049778 and 280826*).

You'll be fully trained by SCAS professional clinicians.

Interested to join or want to donate?

Email cfr@scas.nhs.uk; ring **0800 587 0207**;
visit www.southcentralambulance.nhs.uk

Market your home with us and receive an exclusive **free microsite** for your property to be shared across your chosen social networks.



Visit **mandmproperties.tv** to find out more.
The only Estate Agent in Leighton Buzzard to offer this unique and unrivalled service.
Call us for more details

Tel: 01525 377733 | mandmproperties.co.uk | mandmproperties.tv



Live a healthy & active life

Free 10 minute advice chats with our Chartered Physiotherapists & HCPC Registered Podiatrists

PHYSIOTHERAPY
PODIATRY &
CHIROPODY
PILATES
ACUPUNCTURE
SPORTS INJURIES
MASSAGE
WOMEN'S HEALTH
& PREGNANCY
CARE

St. Judes
physiotherapy, health and well being
01525 377751 
enquiries@stjudesclinic.com
www.stjudesclinic.com

J Able bathrooms

New Showroom NOW Open in Edlesborough

DESIGN

Free CAD design of your bathroom, This will give you a photo realistic finished plan of your design.

SUPPLY

Come and browse our display suites, This will help you decide on the perfect bathroom for your needs.

INSTALLATION

Our installations are of the highest standards!
We take pride in making you delighted with the finished result.

We have suites in a wide range of styles to suit your budget.
Drop in or ring to make an evening appointment at the showroom
or a home visit at your convenience.

Opening Times

Monday. 9am-5pm
Tuesday. 9am-1pm
Wednesday. Closed
Thursday. 9am-1pm
Friday. 9am-5pm
Saturday. 9am-1pm
Sunday. Closed

T: 01525 220043 M: 07891 449077

3 Summerleys, Edlesborough, Buckinghamshire, LU6 2HR
W: www.jablebathrooms.co.uk E: ableplumbing@hotmail.co.uk

fancy a break?



LUXURY 3 BED, 2 BATH APARTMENT APPROX 1 MILE FROM CENTRE OF PUERTO BANUS MARINA, SPAIN. 45 MINS EASY DRIVING FROM MALAGA AIRPORT.

ALL MOD CONS INCLUDING AIR-CON, SAT TV, FULLY EQUIPPED KITCHEN, SWIMMING POOLS, EXCELLENT CLUBHOUSE & TENNIS COURTS.

MANY GOLF COURSES AND ALL WEATHER BOWLING GREENS NEARBY. CLIMATE IDEAL FOR HOLIDAYS THROUGHOUT THE YEAR. RATES £350 - £750.

CALL PETER OR CELIA ON 01525 220173 OR VISIT OUR WEBSITE AT WWW.479LOSANARANJOS.CO.UK.

Plumm

PROPERTY

'A fresh approach to selling property' ...

IN AND AROUND YOUR VILLAGE

Phone now for a free, no obligation, Valuation of your Property

01296 660230

01442 863737

www.plummproperty.co.uk

Absolutely Plastered

**DOMESTIC/COMMERCIAL,
CLEAN AND RELIABLE SERVICE,
FREE ESTIMATES, FRIENDLY ADVICE**



- * Plastering & Coving
- * Floor Screeding
- * Pebbledashing & Rendering
- * Dry Lining
- * Cornices & Mouldings
- * Insurance Work Undertaken

CALL NICK CONWAY ON

Mobile: 07751 830716

Tel: 01296 688981

6 Cotes Way, Wing, LU7 0RB

Established over 20 Years

Duncan Tomblin

TREE SURGEON

Forestry Contractor • Tree Felling
Crown Reduction & Thinnings
Deadwooding • Hedge Cutting
Stump Grinding • Site Clearance
Private Agriculture Fencing Contractor
Chipper & Stump Grinding Hire
Digger Hire

**FULL PUBLIC LIABILITY INSURANCE
FREE ESTIMATES**

'The Best Choice For Your Tree'

TEL: (01525) 221946

MOBILE: (07802) 410728

12 Greenways, Eaton Bray, Beds

Ploughmans Lunches

**All Saints Church
Dagnall**

Saturday 18th July

12.30pm until 2.30pm

All welcome



*St Mary's Church,
Edlesborough
will be open from May
until September on the
first Sunday in the month
from 2pm to 5pm*

WHIPNADE PARK GOLF CLUB

**STUDHAM LANE, DAGNALL,
HERTS HP4 1RH**

NEW MEMBERS WELCOME

**JOIN OUR MIXED FRIENDLY
CLUB AND ENJOY
OUR BEAUTIFUL FLAT
COURSE**

**PHONE OR CALL IN FOR
DETAILS
01442 842310**

***Dagnall School
Open Afternoon
Tuesday 21st July
3.30pm until 5pm***

*All welcome to visit our lovely
village school and let our
delightful children show you
around.*

***Dagnall School
Main Road South
Dagnall
HP4 1QX
Tel 01442 842473***

RESIDENTS of NORTHALL



Please join the Northall Village Hall
Management Committee
(Northall Village Trust)

AGM 2015

8.00pm

*Enjoy a complimentary
glass of Pimms!*

Monday 6th July 2015

at Northall Village Hall

Meet the Members
of the Management
Committee!

Find out about
our future plans
for the Hall!

Share your ideas
about how we might
improve the Hall
further!

Northall Village Trust - Registered Charity No: 1117673

Open Weekend

something for all the Family

Sat. 5th & Sun. 6th September

At St. Mary's, Eaton Bray

WATCH THIS SPACE



**Welcome to
Eaton Bray Academy**

Telephone: 01525 220468
Email: admin@eba.ec

A wonderful place to be




Patricia

Mobile Beauty Therapist

Massage & Beauty Treatments

01525 237781

07866 126510 Fully Accredited & Insured



McTimoney CHIROPRACTIC



Margie Craib BSc BHSI DC AMC MMCA
Human and Animal Treatments

Ashridge Farm, Ringshall, Berkhamsted, Herts HP4 1ND
Telephone: (01442) 842729

General Chiropractic Council Registration No. 293



Virtual administrative support to businesses & private individuals

Website hosting

Domain registration

Desktop publishing

01525 229695

Email:

enquiries@morenassociates.co.uk

www.morenassociates.co.uk

ADRIENNE'S PRIVATE HIRE

Call for a FREE quotation
Book early to avoid disappointment
Very competitive prices

Airport Transfers
& Private Hire

07980 039715

Our executive Cars, 6 seater Minibuses and lady driver are all available



J.G.S. Metalwork & Son

Specialists in Gates
& Gate Automation

Access Control • Security Grilles • Railings
Balconies • Stairwells

www.jgsmetalwork.co.uk

Call in to discuss your ideas

High Street, Edlesborough LU6 2HS

Tel: 01525 220360 Fax: 01525 222786

GRASS ROOTS GARDEN MAINTENANCE

TREE SURGERY, HEDGE PRUNING,
SELECTION SUPPLY AND PLANTING OF
TREES, SHRUBS AND HEDGES.
REGULAR MAINTENANCE/ONE-OFF JOBS
(Fully Insured)

Brian McMahon NCH (Arb)

01525 221960



Edlesborough Flowers

Flowers, Gifts, Jewellery
& More...

2 High Street,
Edlesborough,
LU6 2HS

Tel: 01525 221920

BEER FESTIVAL

10TH ~ 12TH JULY 2015



~ 15 REAL ALES ~

~ 5 CIDERS ~

~ BBQ ALL WEEKEND ~

~ LIVE MUSIC FRI/SAT NIGHT
& SUNDAY AFTERNOON ~

OPEN GARDEN SUNDAY



Sunday 26 July
11.30 – 5pm

*One of the social delights
of the year*

Come to **Eaton Bray Village Hall** to
collect a roving ticket (**just £5**)
giving admission to 8 lovely gardens
varying in size and design.

**Refreshments in the Hall and
in gardens plus Plant Sales**

ILLUSTRIA

Kennels & Kathotel

Offering your pet a fully licensed Dog and Cat boarding service.

Purpose built Dog kennels

Individual Cat chalets with outdoor exercise runs

All in pleasant country surroundings

01582 ~ 665343



ILLUSTRIA
Springfield Road
Wellhead
NR Dunstable Beds
LU6 2JT



Proprietors

Mick, Denise and Michele Garrod



The Gentleman Gardener

Let your local RHS qualified gardener make your garden beautiful, from simple garden maintenance to total redesign of your garden.

Please call Barry on
01525-222451 or
07541196384

to pop round for a free chat.

N.D.S.

General Building & Plumbing
(25 years experience)

- Roofing; Installer of UPVC guttering, soffits & fascia boards
- Kitchens & Bathrooms fitted
- Property Maintenance
- Fencing • Patios & Block Paving
- Gazebos • Garden Structures

Tel: 01525 221470

Mobile: 07946 626564

FREE ESTIMATES

...

**ALL WORK CONSIDERED
NO JOB TOO SMALL**

For a top quality
decorating job call

Marc Flack

01525 223166

Trading locally for 10 years
References are available

Make your house a home with blinds and awnings from

**VANSAR
BLINDS**



www.vansarblinds.co.uk

- Free No Obligation Measuring And Quotations
- All Blinds Made To Measure
- Choose In The Comfort Of Your Own Home Or Workplace
- Family Run Business
- Large Range Of Quality, Affordable Fabrics And Colours To Choose From

YOUR LOCAL EXPERTS
**OVER
25
YEARS**

Call: 01525 220477 or 01582 699565 E: sales@vansarblinds.co.uk

Financially Prudent (IFA) Ltd

23 The Green, Edlesborough, LU6 2JF

Your local IFA for impartial Personal or Corporate advice on:

- Mortgages
- Pensions & Annuities
- Insurance
- Savings & Investments

Call Paul Pearce on 01525 220480 or email paul@finpru.com for a no obligation initial discussion



Financially Prudent (IFA) Ltd is authorised and regulated by the Financial Conduct Authority



Established Village Dog Grooming Service

Professional and Affordable
Large breeds welcome
Trained in Hand Stripping
Nails, Ears and Glands included

Contact Ulrika Tel 01525 211592
5 Mill Road, Stanbridge, Beds. LU7 9HX
www.abfabgrooming.co.uk

Spinney Landscapes & Gardening Services

All Aspects of Grounds Maintenance

Weed Control • Driveways & Patios
Lawn Care & Scarifying • Fencing
Turving • Tree Work
Snow Cleaning & Gritting

Tel: 01582 872084 Mob: 07876 500292
Email: chambo.1628@btinternet.com

Free
**LIVE MUSIC
FESTIVAL**

ROCK THE COMMON 2015

featuring

**TOFFEES • CROWJAYNE SC
FLYNN LABAN • MICHAEL HUNT
THE COMMON PEOPLE
BAD BONES • THE ALTERNATIVE
RHYTHM & SOUND EXPERIENCE
+ SURPRISE GUESTS**

**STUDHAM
BURRY
2015**

**SATURDAY 12TH
SEPTEMBER
FROM 2PM**

**BBQ • TOMBOLA
AUCTION**

**THE RED LION
STUDHAM LUG 2QA**



Come and play



EB Lions are looking for
keen boys and girls to
join in our fun
football sessions for
U5s and U6s

We are proud to offer our fun training sessions, to develop player skills confidence and teamwork and is part of the club's football development plan that will lead to organised teams with EB Lions from U7.

Our Coaches are FA Qualified and CRB checked, training is provided in conjunction with Football Fever.

Starts September 2015

email enquiries@eblions.co.uk to sign up

www.eblions.co.uk

 Follow us @EBLions

 Find us on Facebook

Respect

A Charter Standard Community Club



S M Reilly & Son Ltd

General Builders & Contractors



Turning Your House into
a Home Since 1987

*All aspects of the building
trade undertaken*

- *Extensions*Hard Landscaping*
- *Windows, Doors & Conservatories*
- *Fitting of Aluminium Bi-fold Doors*
- *Kitchen & Bathrooms*Drives*
- *Loft Conversions*

01525 221740
07970 637511

ALAN BOULT
(Light Haulage)



- TRANSPORT ● COLLECTION
- DELIVERY SERVICE
- SINGLE TO MULTIPLE ITEMS
- REGULAR CONTRACTS WELCOME

Tel: 01296 427182

Mobile: 07770 237745

Email: boulton586@btinternet.com

A McClelland
Pest Control



FOR FAST RESPONSE CALL:
mobile 0777 494 8415 or office 01582 872158

specialists in: wasps - bees - ants - hornets
fleas - cockroaches - bed bugs - pigeons - magpies
rabbits - rats - mice - moles - squirrels - foxes - mink - feral cats

UNMARKED VEHICLES

For further information please call
or email a.mcclelland_pestcontrol@hotmail.co.uk



Tel: 01525 221847
sales@act.uk.com



GENERALMECHANICALSERVICESLTD

VEHICLE SERVICING AND REPAIRS



**MOTs • MOT REPAIRS • SERVICING
DIAGNOSTICS • TRACKING • AIR CONDITIONING
TYRES • CAMBELTS • COLLECTION & DELIVERY
WELDING & FABRICATION • BATTERIES**

All vehicles - all mechanical work!

1 HONEYWICK LANE, EATON BRAY, LU6 2BJ

reception@general-mechanical-services.co.uk

www.general-mechanical-services.co.uk



01525 222876



TEL: 01582 667924



13185

"Good reputations take years to build"

GRAHAME PRATT

Plumbing & Heating Engineers

**Plumbing & Heating
Bath & Shower Room Design and Installation
Ceramic Floor & Wall Tiling
Kitchen Installation
Small Building Works**

www.grahameprattplumbing.co.uk

Email - enquire@grahameprattplumbing.co.uk

NG AUTOS



MAKING YOU AND YOUR CAR HAPPY

CAM BELTS • MOT'S • MOT REPAIRS • HEAD GASKETS
AIR CONDITIONING • RECOVERY/BREAKDOWN
DIAGNOSTICS SERVICING • BRAKES • SUSPENSION
CLUTCHES • GEARBOXES • TYRES • WHEEL BALANCING
WHEEL ALIGNMENT COLLECTION & DELIVERY

CALL NICK OR GARY

01525 220850 OR 07972 198615

**SPARROW HALL FARM, LEIGHTON ROAD,
EDLESBOROUGH LU6 2ES**



Reception



Service Bays



MOT Station



Dunstable Lock & Safe Co

Locksmiths & Safe Engineers
A local family run business for over 30 years

Special Offer

5 Lever Insurance rated mortice
deadlock, supplied & fitted
Only £99.00 inc VAT

- Anti snap cylinders
- UPVC door & window locks
- Safes supplied & fitted
- Master key cutters
- Safes opened & repaired
- All locks supplied & fitted



Be one step ahead of the burglars and call us
today to discuss your security needs however
big or small

89 High Street South
Dunstable
Beds, LU6 3SF

Tel: 01582 696108
www.Dunstablelockandsafe.com

**Made to order
garden furniture & ornaments**

Call John on: **0789 506 8251**



**Makes an ideal gift
for any occasion**



David Brown

Window Cleaning

Quality Reliable Service.

Regular, Occasional or
Single Visits.

Friendly Free Estimates.

Facias, Guttering & Conservatories.

External Cleaning & Maintenance.

Fully Insured.

Phone 01582 472113

Mobile 07534 837073

D & E HINES

High-Class Butchers

Quality Beef, Pork & Lamb

Grade A Poultry

BBQ & Sausage Speciality

Renowned for 'Bunkers Sausages'

Telephone: 01525 220413

98 High Street, Eaton Bray

Eaton Bray Village Hall



- ❖ Equipped to support theatrical productions and film shows
- ❖ Large car park
- ❖ Large Kitchen with a six ring cooker, large refrigerator, hot trolley, crockery etc.
- ❖ 3 separate areas to hire to meet your needs and budget
- ❖ For more information and brochure please ring Norman on 07975 797202

- ❖ Superb venue for weddings
- ❖ Fantastic place for parties and dances
- ❖ A must for children's parties, can fit the bouncy castle inside if weather dictates!!!
- ❖ Keep fit groups
- ❖ Ideal for Club meetings or functions



Dagnall School



A Buckinghamshire co-educational school

For 4-7 year olds



Dagnall School offers small class sizes, an exciting curriculum, excellent care and support and good links with the local community



Ofsted 2011
"Pupils are confident,
very happy at school
and curious to learn."



Tel: 01442 842473



www.dagnall.bucks.sch.uk

E-mail: office@dagnall.bucks.sch.uk

G.N.C Wall & Floor Tiling

Covering all aspects of tiling from
Natural Stone & Porcelain to ceramics



gnctiling@hotmail.com

Providing assurance & attendance through to
completion of works

For a free full & comprehensive quotation
please call Colin Bell

07725 033017

01525 222094

D.A. Windows Doors & Conservatories

23 Church Lane, Eaton Bray, LU6 2 DJ

Tel: 01525 221051 Mobile: 07801 798387

email: mimcavinder@hotmail.com

AUTHORISED
SWISH INSTALLER
WITH OVER 20
YEARS
EXPERIENCE

Installation of PVCu windows, doors and conservatories
Replacement glass units and window maintenance

QUALITY PRODUCTS - QUALITY WORKMANSHIP -
REASONABLE PRICES



General building
maintenance work
also undertaken
including:
Fascias and Soffits
Gutters
Fencing

Accredited Member of the
Incorporation of Plastic
Window Fabricators and
Installers Limited



PLUMBING AND HEATING

FOR ALL YOUR PLUMBING, HEATING AND GAS
REQUIREMENTS

NOSSITER AND BARNETT LIMITED
PLUMBING AND HEATING

CONTACT MATT OR JAMIE
TEL 01525 229524 MOB 07802 270427





Protecting what's important

MJ Security Systems Ltd

MJ Security Systems

Contact Us For More Information

Unit 4, Arianne Business Centre,
Blackburn Road,
Townsend Industrial Estate,
Houghton Regis,
Bedfordshire,
LU5 5DZ

Please call for a free quotation

T: 0800 0856126

E: info@mjsecurity.co.uk

W: www.mjsecurity.co.uk



We also specialise in:

- IP Cameras
- Intruder Alarms
- Access Control
- CCTV & Monitoring
- Door Entry
- Covert Cameras
- Security Lighting



FROM ONLY
£439.95+VAT
Products and
Installation



Kit includes:

1 x Wireless Door Contact, 2 x Wireless
P.I.R., 1 x Wireless Sounder, 2 x Remote Set
and Unset Fobs.

Stylish • Wireless • Secure

M . P . S

Maintenance & Property Services

- KITCHENS AND BATHROOMS
- PAINTING AND DECORATING
- PROPERTY RENOVATIONS
- PLASTERBOARDING
- FENCING

FREE ESTIMATES

NO CALL OUT CHARGE

NO JOB TO SMALL

LOCAL

Contact:- Julian

07958 306301

E-mail – mps@mustoe.co.uk

www.mustoe.co.uk

Leighton Aerials

Established 1970

**For all your aerial and
satellite needs call Colin
on 01525 374742**



Edlesborough School & Pre-School



Pupils' behaviour is outstanding...

The environment for learning is exciting and stimulating...

A real strength of the school is pupils' attitude to their learning .

Ofsted 2013

For more information about our School, Pre-School and Before and After School facilities, visit our website at www.edlesborough.bucks.sch.uk

Please contact the school on 01525 220431 to arrange a visit.

CHIMNEY SWEEP

Local & Est. Brush n Vac
Friendly, Clean and Efficient

Call **KEVIN HING** on

Tel: 01525 371592

Mob: 07940 528897

www.khing.co.uk

Member of NACS



E W Wallace & Co
Chartered Accountants
Tax Consultants
Business Advisors

Small business specialists serving
Beds, Bucks & Herts

- Annual accounts
- Tax returns
- Self-employed
- Limited companies
- Small business specialist
- Sage Accounts expertise
- Prompt, personal service
- Value-for-money fees
- Free initial consultation

01525 220826

www.ewwallace.co.uk



JAMES FALCON-CROSS

LANDSCAPING AND OUTDOOR LIVING DESIGN

ALL ASPECTS OF LANDSCAPING
UNDERTAKEN INCLUDING
FENCING, TURFING AND PATIOS
TIMBER STRUCTURES
DESIGNED AND BUILT

VEGETABLE AND HERB GARDENS

01442 843258 / 07769 901325

ONECROSSFALCON@GMAIL.COM



Beau

HAIR AND BEAUTY SALON

- Unisex hair salon
- Hair Extensions
- Nail Bar
- Wedding, Prom Hair Styling
- Express Eyelash
- Girls Glamour Parties
- Accessories
- Loyalty Cards

01525 220926

3 Summerleys, Edlesborough LU6 2HR

For lots more offers and news about what is happening follow
and like us on Beau Hair & Beauty @beausalon

CND Shellac™

KOLESTON PERFECT

O.P.I



ghd

Home or Business
IT Support



Visit Our Website at www.hobit.co.uk

Laptop Repair • Virus Removal • Data Recovery
Laptop Screen Replacement • Data Transfer
Wired & Wireless Networks • Broadband Setup
Backup Solutions • Printing Problems
Tune Ups • 1:1 Training • Email Problems
Ipad & Iphone Connectivity Issues
Computer Upgrades • Free advice

Call now 01525 378127 or 07702 80 70 90

RELIABLE - PROFESSIONAL - LOCAL

James B Chadburn FBHI Fine Antique clocks & Barometers

Specialist in repairs & restorations.

Valuations & clock finding service.

Advice & assistance on formation & disposal of private clock collections.

Quality clocks/barometers Bought & sold.



Telephone 01525 221165

Mobile 07790 000629

E-mail: info@jameschadburn.com

Reiki Therapy

Reiki means universal energy. It is a relaxing, calming therapy that calls on your own bodies natural healing properties. It is possible for Reiki to help with physical symptoms, emotional issues and spiritual growth.



Session is £30 per hour

Contact Nicola (Reiki level 2)

Mob 07941799772

01525837018

Bower Lane Eaton Bray

T. COBB

PLASTERING
FLOOR SCREEDING
PLASTER MOULDINGS
CEMENT CORNICES
RENDERING

GENERAL BUILDING & ALTERATIONS

TEL: 01525 792698 MOB: 07772 231348

Wagging Wonderful
Dog Grooming
Here to take care of your mucky pup!

- Your local grooming service in Eaton Bray!
- 1-2-1 care for your dog
- NO cages!

Telephone: 07580 343 396

Website: waggingwonderful.weebly.com
Email: waggingwonderful@yahoo.co.uk



Harmony Plus Hair & Beauty Clinic

Bridal Packages Available

We offer a range of treatments:

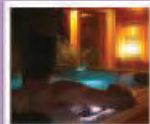
- 3D Lipo Fat Reduction
- Teeth Whitening
- Caci Non-Surgical Face Lift
- Crystal Clear Macrodermabrasion
- Extreme Lashes and LVL's Lashes
- HD Eyebrows
- Fake Bake Tanning
- Young Blood Make-up
- Manic Nails
- Bio Sculpture Gels
- Shellac Nails
- Hot Stone Massage
- Reiki

Call us today

Harmony Retreat

FREE SPA PLACE
in our cosy log cabin
FOR THE BRIDE ONLY

if the Bride books her Spa Hen Party
for 5 people or more at
Harmony Retreat's Log Cabin
when Hair & Makeup is booked
with Harmony Plus Hair & Beauty Clinic



Harmony Plus Hair & Beauty Clinic
6A Wallace Drive • LY6 2DS • Dunstable/Leighton Buzzard
07852 145053 • www.harmonybeautysanctuary.net



C H BUILDERS

1 Richmond Court
Eaton Bray
Dunstable
LU6 2DY

cwhawkes@tiscali.co.uk
Tel: 01525 229558
Mob: 07989 357231

Local builder with over 35
years experience in the trade,
specialising in:

- Kitchen fitting and alterations
- Extensions
- Loft conversions
- Renovations

Recommendations available

Please contact Chris to discuss
any requirements for a free
quotation

LINSLADE PHYSIOTHERAPY & SPORTS INJURY CLINIC

47a Coniston Road Linslade
Leighton Buzzard Beds LU7 2PJ



Affordable effective treatment to ..

- Relieve your neck & back pain
- Loosen your stiff joints
- Ease your arthritis
- Get you back in the game after a sports injury
- Help you recover from surgery

Why Wait To Feel Better?
Ring for an appointment now
01525 853462

E-mail: pt4u@linsladephysiotherapy.co.uk

(Ample free parking available)

Brand New Butterfly House Opens at ZSL Whipsnade Zoo

Whatever the weather, visitors to ZSL Whipsnade Zoo are now able to bask in the tropical warmth and stunning colours of the Zoo's brand new Butterfly House.



Now open, ZSL Whipsnade Zoo's Butterfly House is one of the largest butterfly biomes of any UK Zoo. The beautifully designed, chrysalis-shaped exhibit is filled with hundreds of colourful butterflies, including 30 different species from all over the world. Visitors of all ages can enjoy being surrounded by butterflies such as the stunning Blue Morpho from Central and South America, whose iridescent blue wings reflect and refract light to create a 'stained glass window effect' and the



brightly-winged Scarlet Mormon from the Philippines, which, as young caterpillars, disguise themselves as bird droppings to avoid predator attack.

The Butterfly House is an exquisite tropical experience, as well as a wonderful place for families to learn more about nature. At the Metamorphosis Zone visitors can see every stage of the caterpillar/butterfly life-cycle, including butterflies hatching from their chrysalises.

ZSL Whipsnade Zoo has always been renowned as the 'land of the giants', drawing visitors from across the world to see its Asian elephants, brown bears and tigers, but the brand new Butterfly House shows visitors that although 'big is beautiful', tiny, delicate creatures can be just as stunning, fascinating, and vital to the natural world.



Eaton Bray Cricket Club

We've had an exciting season so far, with 2 Saturday league teams in the Four Counties Cricket League and our Sunday Development XI playing in the Bedfordshire Development league, this team consists of 4 adults and 7 U17 players. This has been a great way to develop the next generation of players.

We've also entered the Coronation Cup and Bedfordshire T20 Cup, both mid week knock out 20 over aside competitions for the 2015 season.

July also sees the anniversary of our centennial fixture against the MCC. The day and game will live long in the memory for all those at the club and it seems for all the MCC members that played and came to watch that day. The following has appeared in the Marylebone Cricket Club Annual, which details all fixtures that the MCC play. "Many Supporters enjoyed the large marquee and bouncy castle which had been set up by Eaton Bray for this well-organised and advertised fixture. MCC recovered well for a mini-collapse to declare on 238-7 after lunch. Eaton Bray fielded a strong side, but the visitors bowled well to win the game. – T. Alam"

Junior Section

We are also running 5 junior sides this year, 2 U10s teams, U12s and U14s all playing in the Bedfordshire Youth League and our U8s playing some friendlies. The U10s and U12s play on Sunday morning and most Sundays see a home game for one of these teams.

We've also got 3 representatives in Bedfordshire county squads, two in the Bedfordshire U10s and one in the Bedfordshire U13 girls squads. This shows how far we've come since setting up our junior section just 5 years

ago.

Details of all fixtures can be found on our website which is quoted below.

Our junior section has training on Wednesday evenings, the 6 to 10 year olds from 6pm to 7pm and the 11 to 14 year olds from 6.30pm to 8pm.

We are actively seeking new players for our junior teams so please let them come and try our junior sessions out. We accept both boys and girls into our junior section.

Contact and Call for New Players

We are always looking for new players from 6 years old to 96 years old and offer a wide range of cricket for all abilities, from competitive cricket to social cricket and junior cricket.

We are in the 21st Century and have several ways we can be followed or contacted.

Junior email address: ebccenquiries@hotmail.com

Senior players: Ian Jones – ian_m_jones1000@hotmail.com or 07956 340888

Web Site: www.eatonbray.play-cricket.com

Twitter: @EatonBrayCC

Facebook: /eatonbraycc

Sponsorship

The club has a growing portfolio of sponsors and we are always on the look for new ones. If your company would like to get involved then please contact Josh Peacock at joshapeacock@gmail.com for senior section sponsorship opportunities or Wes Hosking at w_hosking@hotmail.com for junior section sponsorship opportunities.

We would like to thank our current sponsors, listed below.

Senior Section Sponsors

Meadow Marquees, Houghton Insurance Brokers and Giblin Properties

Junior Section Sponsors

BE Aerospace and Taylor Wimpey



Dagnall School visit to the Village Allotments

In the first half of the summer term Dagnall School visited the local allotments. We thought of and wrote down lots of



Questions for David

Maggie Year One

Why are there baths?

How long does it take for vegetables to grow?

Who looks after the allotments?

How long have the allotments been in Dagnall for?

What do people grow?

How do they grow fruit on the allotments?

How much does it cost?

questions to ask David. We had a brilliant time learning all sorts of information about this fantastic local place. On our return to school we created leaflets to record what we had discovered. Thank you to David for showing us around and inspiring us to get gardening ourselves!

Dagnall Village Allotments

A Leaflet by Bhav Year One

<u>Price</u>	<u>Fruit</u>	<u>Top Tips</u>
You can rent an allotment for about £10. That is a very good price for one year.	In the summer you can grow fruit such as red juicy strawberries. They are very yummy!	Net covers help the flowers to grow because they stop the bugs and weeds.
<u>Vegetables</u>	<u>Flowers</u>	You cannot grow trees on your allotment. Use a bath to keep a supply of water handy.
At the allotment you can grow all of your favourite vegetables. You could grow crunchy carrots.	You can grow lots of colourful flowers. You can grow yellow daffodils in spring.	

Edlesborough School



At Edlesborough School, we had an Annual Junior Apprentice Challenge for the Year 6 pupils in June. The students participated in a series of exciting tasks, prior to a sale on Wednesday afternoon. We were organised into groups by the teachers, therefore we had to be professional and learn to co-operate with everyone within our teams, rather than just our friends.

Throughout the fun-filled week, the pupils had to purchase their ingredients, manufacture their products, sell them, plus present to the board! Fortunately, we managed to borrow the mini-bus from Cottesloe School and Mrs Hollinshead drove us to Morrisons in Leighton Buzzard to purchase our ingredients for our new and unique products. We had a

budget of £15.00. We then had a short time to manufacture, advertise and make packaging before the sale.

After the sale, the groups had to get their heads down and create a presentation worthy enough to be shown to an intimidating board made up of businessman, Lord Sugar (aka Mr. Freed) and entrepreneur, Mrs Peel.

We are currently awaiting the results of the five awards up for grabs (Best Profit, Best Stall, Best Presentation, Overall Winners, and last, but no means the least, the Wooden Spoon.

As you can probably see, the Year 6's had a wonderful week, and the Year 5's are very much looking forward to it next year. "A once in a lifetime experience!" was said by one pupil.

By Matthew Manley and Louis Moore

Studhambury

2015

The free live music festival Studhambury 2015, in aid of the children's cancer charity CLIC Sargent, will be held on Saturday 12th September at the Red Lion pub in Studham (LU6 2QG). The music starts at 2pm and will go on until 9pm. Come and listen to local talent perform, enjoy a relaxed time in the great outdoors and benefit this worthwhile cause. All welcome

ROCK THE COMMON 2015



Dagnall Community Choir

On the Road



We have recently performed our first concert of the year at St. Mary's Church, Redbourn, in which we raised a substantial sum for their chosen Charity of the year, PTSD Resolution, which offers support and counselling for men and women suffering from post-traumatic stress disorder following engagement in war zones. The choir presented a wide range of music which was thoroughly appreciated by those attending. We in the choir also enjoyed the evening as it was an opportunity for us to present a number of new items in our repertoire and also give some of our first time soloists time in the spotlight, and by golly they certainly shone.

We are now starting work on additional music for the choirs Autumn Concerts, the first of which will be in Eaton Bray Village Hall on Saturday 24th October, followed by our appearance at the Poppy Prom on the 7th November at St Mary's, Eaton Bray. Our Christmas Concert featuring well known and not so well known carols will be taking place in Dagnall Village Hall

on Sunday 13 December. Please visit our website which you will find at www.dagnall-community-choir.co.uk for further details and updates. You will also find further details about the choir and see pictures and videos of our recent performances.

We would like to encourage everyone to come along and join the choir, particularly men, as we are always in short supply of them. If you feel you would enjoy an evening of singing, a cup of tea, the occasional biscuit or cake and a trip to the local hostelry afterwards (!) then please do come along on a Monday evening and enjoy the pleasure that singing in a choir can bring. You do not have to be experienced to enjoy and you will certainly be made welcome.

Finally a word or two of thanks to Tony Lumley who has most ably guided the choir through its beginnings to where we are today and after five years at the helm has decided to take a break. Thanks Tony for all your hard work.

Eaton Bray W.I.



After the welcome by Deirdea at the meeting held on June 1st, birthday cards were handed out to Jeannie, Vera and Jennifer.

A letter has been sent to the National WI regarding the feelings of the group concerning the WI resolution for this year, including the reasons why some members had abstained. Deirdrea also informed the delegate who attended the AGM of Eaton Bray's vote.

A coffee morning was held on June 11th to raise funds for the special 100 years of WI celebration to be held later in the year. This will comprise of a vintage garden party

to be held in the home of Jill Wilkinson in August. Another permanent suggestion was the embroidering of a new tablecloth to include the current members names.

The speaker at the June meeting was Zena Herbert and her talk was entitled "A Weekend Away with a Carrier Bag". This was followed by social time and refreshments and the drawing of the raffle won by Jill and Meg. The speaker at the next meeting will be Carolyn Stroud on the Cinnamon Trust, the National Charity for elderly and terminally ill people and their pets.

Put Your Best Foot Forward!



It doesn't matter how old you are - everyone benefits from good foot care.

Cracked heels are caused by dry skin, prolonged standing or mal-alignment of the foot or walking pattern. Use a pumice stone to reduce the hard skin and apply a suitable foot cream. Avoid wearing thin-soled or open-backed shoes and choose a good shock absorbing sole.

Corns are thickening of the skin usually on top of the toe, the sole or between the toes caused by pressure of the shoe. These may be swollen and painful to direct pressure. Often caused by ill-fitting shoes, you should avoid tight shoes and hosiery. Use a pumice stone to remove excess skin and moisturise with a good foot cream. Don't use corn plasters as these can destroy healthy skin.

Sweaty and smelly feet can be caused by hormonal changes such as hyperhidrosis (excessive sweating) and being on your feet all day. Wear cotton socks and rotate your shoe usage. Wash and dry your feet carefully every day. Surgical spirit or

witch hazel between the toes may help.

Blisters are painful, fluid-filled lesions, often caused by friction and pressure from ill-fitting footwear and socks and excessive moisture between the foot and the sock. To help prevent them:

- Wear comfortable, good-fitting footwear.
- Choose moisture wicking socks that are the right size - specialist dual layer socks can be useful for walkers and runners and change your socks daily.
- Keep your toenails trim and regularly check your feet for signs of rubbing. If you have a blister, do not pop it - cover with a breathable plaster.

For further information on foot care contact your local HCPC registered Podiatrist.

**Tips by St Judes Clinic,
26 Lake Street
Leighton Buzzard
LU7 1RX**

☎ 01525 377751

**📧 www.stjudesclinic.com
enquiries@stjudesclinic.com**



Front Row Theatre Group

Front Row Theatre Group are pleased to announce their next production, Murdered to Death, a comedy by Peter Gordon, which will take place at Eaton Bray Village Hall between Thursday 15th and Saturday 17th October 2015.

When Mildred invites some old friends for a weekend nobody expects events to take a murderous turn, but before the first evening is over there is a death in the house. And it soon becomes clear that the murderer isn't finished yet, but will they be unmasked before everyone else has met their doom, or will audiences die

laughing first?

Come and enjoy an evening with your local theatre group, as they visit Bagshot Hall for the weekend ...

The tickets will be on sale from 1st September, priced at £7.00 each, and will be available from The Box Office, Tel 01525 222283

We look forward to your company!



Old Farm Inn - and the Morris Men Visit

The Old Farm Inn in Totternhoe which is a 14th century grade II listed building, run by Thomas & Julie Petzing, was the perfect setting for the Caddington Blues Morris dancers, the Mixed Cotswold side, for whom Dennis does the music. Based in Caddington, it is a small side, dancing some entertaining sets of between three and six people using sticks and handkerchiefs.

The Morris men pulled out members of the crowd to help them perform their

dances to the delight of the audience.

The earliest recorded mention of Morris dancing is 1448 where it is noted that the Goldsmiths' company in London paid seven shillings to the morris men.



NORTHALL BAPTIST CHAPEL

Chapel Lane, Northall

(just beyond the 30 speed limit signs on the road towards Leighton Buzzard)

Everyone is welcome to our Sunday worship each week between 11am and 12.30pm including tea/coffee and time to talk together.

For more information contact:

John Hazell 01525 218142

Email northallchapel@btinternet.com

There has been a Baptist Chapel in Northall for more than 200 years. Today we continue to seek to worship God, serve him in our daily lives and support and encourage one another in the difficult and the joyful times.

London Luton Airport

With an increase in aircraft in the area and in particular when the wind is from the East, we are getting some aircraft flying directly over the village to join the flight path into the airport. If you are disturbed by the traffic flying over the village, there is a complaints hotline number: 01582395382. This is an airport number where you can register your concerns. It is important to do this if we are to reduce these disturbances over our village.

If you need to complain about Heathrow flight noise the number is 0800 344 844. Email: noise_complaints@heathrow.com





Village Property News from Giblin Property

Despite lower interest rates and a change in stamp duty in the run up to the General Election, we experienced a major slowdown in the housing market caused by pre-election jitters and general uncertainty. I am very pleased to report that post-election confidence has now set in, along with the traditional spring/summer optimistic trends, giving us a thriving property market.

We have seen a steady increase in the number of new purchasers entering into the marketplace this month causing an increase in demand and a lack of properties to sell! Mortgage borrowing rates are at a record low and property buying costs for many purchasers have dropped following the reform of stamp duty.

FEATURED PROPERTY

Poplar Farm, in Eaton Bray, is steeped in local history being the former home of Mr Wallace, of the Wallace Nurseries. Restored to its former glory and retaining its wonderful original features, the property offers bright and airy rooms, en-suite to master bedroom and a superb garden plot with a detached large garage. Price on application – 01525 220605.



BRAYSCOPE

Experts in commercial & domestic horticulture

For all your **Commercial**
and **Domestic** landscape
requirements

Professional and **Qualified**
landscape maintenance and
Construction company



Contact Kevin on

01525 220948 07949 601630

brayscape@aol.com

14 SCHOOL LANE, EATON BRAY BEDFORDSHIRE, LU6 2DT

Come for Coffee at St Mary's

For a warm
welcome and a
cheering cuppa
on the first
Saturday each
month in
St Mary's Church
Eaton Bray
10.00am - midday



Are you an elderly or
housebound resident ?

Would you enjoy a
monthly (free delivery) fish
and chip supper ?



If your answer is 'yes' to either of the above questions then please do get in touch.

We run this scheme on the last Friday of every month but need your orders no less than 48 hours prior to this. We have a voicemail facility on our phone if we are not there to speak to you directly. All messages will be confirmed back to you so you know your order has been received.

Please call on **01525 229 656** to place your order

Ordinary people doing amazing things





EDESBOURGH TENNIS CLUB

Website by Jupiterwill

www.etctennis.org

Play tennis Have fun Socialise Feel good Join our club

Join via the website, or call Iona McLean-Hall on 01525 220562 for details

Monthly
draws

New 100 Club

Spend £2 to
spend a penny

In aid of toilets and other improvements
at St Mary's Church, Eaton Bray



Contact: eatonbraychurch@aol.com or telephone: 222691

Eaton Bray Academy

The staff work exceptionally well as a team to promote children's welfare, learning and development and to make sure everyone enjoys their time at the pre-school. Ofsted 2012



Children benefit from the abundant shared resources, access to school assemblies, the information technology suite and the extensive outdoor facilities. Ofsted 2012

Pre School



How many Pre Schools do you know that are part of the Main School? Well, EBA is *one* School!

All the children wear School uniform, have their own book bag, can attend clubs and even eat our delicious School dinners, cooked on the premises by our own School cooks.

.We believe that quality Early Years education is essential; it is on this that everything is built.

We offer a caring, happy, secure and stimulating learning environment in which the children thrive.

Come and have a look!

Tel. 01525 220468 or email admin@eba.ec

Children clearly benefit and thrive as the accommodation, equipment and resources are well suited for their purpose and conducive to learning. Improvements to the premises and the outdoor area give children the confidence to explore and help all aspects of their development. Ofsted 2012

ravencounselling

Teresa Raven, accredited and registered member of the British Association for Counsellors and Psychotherapists (BACP).

Counselling offers you a safe, confidential place to work through difficulties, issues or problems you may be experiencing.

My pricing starts at £15 for an initial consultation, with further sessions priced from £40. Please contact me for more information, or visit my website.



www.ravencounselling.co.uk



ravencounselling@aol.com



07960 090113



facebook.com/ravencounselling

Make your next holiday a *Disney* one!
with one of our luxurious villas right on the doorstep



MINUTES FROM DISNEY



CHEAPER THAN A HOTEL



PROFESSIONAL FRIENDLY SERVICE

PersonalTouch
VACATION VILLAS

☎ 0845 5280 162

🌐 personaltouchvacationvillas.com

As former Edlesborough residents; we now own and run a family business in Florida, USA. Let us help make your Disney holiday as **PERFECT** as it can be. Our **private pool villas** (AKA 'home from home'), cater for all your needs and are **within 5 miles of the parks** - the perfect base for your trip.

Leighton Plumbing & Heating

Oil fired boilers
service, repairs
& installations



All other aspects of plumbing
& heating undertaken

Oftec registered & insured

01525 385250
07774 567472

11 Woodman Close
Leighton Buzzard
Beds
LU7 3NU

leighton-plumbing@ntlworld.com



Helping Hands
The Home Care Specialists

Est. 1989

Do you need a Helping Hand?

Our **local** care team has been providing award winning quality homecare since 1989.

We offer a homecare service **from 30 minutes per week to full-time Live-in Care**, which enables you or your loved one to remain at home with compassion and dignity.

To find out how we can help,
call: 01296 752 632 or
visit: www.helpinghands.co.uk

 **Stoten Gillam**
chartered accountants
chartered tax advisers

99 High Street South
Dunstable
LU6 3SF
Tel: (01582) 608601
www.stotengillam.co.uk

ICAEW CHARTERED ACCOUNTANTS   "Practical Solutions for Growing Businesses" 


W Roff Agricultural Services

- Hay & straw for sale
- Paddock maintenance
- Fencing

 07909 680807
ELSAE FARM, CHEDDINGTON

Wednesdays
1pm to 2:30pm
(During term time)
Eaton Bray Village Hall
(Church Lane LU6 2BJ)

cheeky monkeys 

under fives play time

£1 per adult/child - Under 1 yr free

creative play 🍌 singing
stories 🍌 baby corner
craft 🍌 healthy snack

01582 699092 🍌
(Beehive Children's Centre)

 Come along,
make new friends
and join in
the Fun!

Coffee Tavern

Large Hall

£6.00 per hour

Commitee Room

£3.50 per hour

Large Hall &
Commitee Room

£8.00 per hour



Bookings 01525 220891

Stairlift and access ramp available

We are a nurse-led home care provider committed to delivering the very highest standards of care.

Support from our dedicated team gives you or your loved one the peace of mind and confidence to be able to continue living at home.

Family-owned and managed, we are independent and do not belong to a national chain or franchise. We are registered with the CQC, number 1-1499072841.



**your own
home care**
putting the nursing back into care

To talk to us about your requirements please call Helen Yates RGN on 07920887414 or 01442 843064 or email helen.yates@yourownhomecare.co.uk



www.yourownhomecare.co.uk



Some comments from our recent Ofsted report:

Children are consistently offered a stimulating range of activities and opportunities which enable them to make good progress towards the Early Learning Goals.

Staff have a good understanding of creating a safe and welcoming environment . . .

Staff support children well and encourage them to be active in their learning and to think critically.

We are a committee run playgroup operating five mornings a week 9:15 – 12:15 for children aged 2 to school age.

If you would like to find out if your child would be happy here, please phone our Playgroup Leader, Ann Tobin on 07816 358 342.

www.dagnallunderfives.co.uk

janes

Electrical Appliances, Bikes & Flooring Store

The Family Business with 130 years of recommendation



Free Delivery & Installation

On Kitchen Appliances & TV's

within a 15 mile radius (excluding installation on Gas & Built-in Appliances)

Sound Advice & Peace of Mind

4-8 High Street, Edlesborough, Dunstable, Beds LU6 2HS

Tel: 01525 220208 Fax: 01525 222802

www.janesltd.co.uk

GALRAL SERVICES

AUTOMOTIVE, AGRICULTURAL & PLANT MAINTENANCE

Modern, classic and vintage vehicles; servicing & restoration

Over 40 year's local experience in automotive industry

Agent for BEPCO tractor parts.

Agent for TRS restraint systems (ratchet straps)

Welding & fabrication services (sheet steel & aluminium)

Auto electrical and engineering works

Contact Simon

07785 278188

Fax/answer machine

01525 210597

GATES

Plumbing & Heating Limited

We'll help meet your heating needs

- Biomass boilers
- Air source heat pumps
- LPG central heating
- Oil and Gas central heating

Please contact us on:

01296 670445

info@gatesheating.co.uk

www.gatesheating.co.uk



We are Gas Safe, OFTEC, NAPIT
and MCS registered

Government funding for renewables

Simples Fitness

Fitness classes & individual fitness training

- * Circuit Training
- * Cardio Blast
- * Crazy Abs
- * Buggy Push
- * Box-Fit
- * Ski-Fit

Membership £35 per month or Pay as you go

Forget the gym...make fitness simples!

www.simplesfitness.com

MINI DIGGER WITH DRIVER FOR HIRE

Fully insured ↔ Competitive rates ↔ Based locally
Aggregates Supplied ↔ ↔ ↔ Tree Stump Removal

Contact Simon

07785 278188

Fax/answer machine 01525 210597



Electrical Services

www.rselectricalservices.com



FULLY QUALIFIED ELECTRICAL ENGINEER

CPS Registered through NICEIC Scheme

Competitive prices and quality service

Available for all your domestic and
commercial electrical requirements

No job too small

Call Russell Sears:

07578 008567

01525 220008

17 Good Intent, Edlesborough

By kind permission of Josef Weinberger

FRONT ROW

presents

MURDERED to DEATH

by Peter Gordon

Thursday – Saturday, 15 – 17 October 2015
7.30pm
Eaton Bray Hall

Come and enjoy an evening with your local theatre group,
Front Row, as they visit Bagshot Hall for the weekend ...



Licenced bar from 7.00pm

Tickets £7.00

Box office: 01525 222283

Opens 1st September



WELCOME TO EB LIONS AFC

Your local village football club offering training and matches for boys and girls from U5 to U18 years.
An FA Charter Community club, with 28 teams and over 300 players proudly celebrating our 20th season this year.

Young players wanted...
to join our successful children's football club, taking kids for all the surrounding villages.

We welcome any new player, especially from the villages we serve, to train and play locally.

Not sure you will like it, we are more than happy to give you the opportunity to give it a go over a couple of training sessions.



We are specifically recruiting for next season;

- U9 Boys & Girls (Current school year 3)
 - U10 Boys & Girls (Current school year 4)
 - U11 Boys (Current school year 5)
 - U11 Girls (Current school years 4 & 5)
 - U13 Boys (Current school year 7)
 - U13 Girls (Current school years 6 & 7)
 - U14 Boys (Current school year 8)
 - U15 Girls (Current school years 8 & 9)
- New coaches and assistant coaches also welcome

Find out more about the club
www.eblions.co.uk

Email: enquiries@eblions.co.uk

www.eblions.co.uk

Follow us @EBLions Find us on Facebook

Respect



A Charter Standard Community Club

Bedfordshire Food & Drink Awards 2015

Great News, although we didn't win 'Best Pub in Bedfordshire' we came 3rd out of 160! We are delighted and very proud of our team.

Thank you for all your votes and support, without it we would not have won this award!

See you Soon,

Warmest Thanks and Regards,

Nikki & Phil

The Bell Studham.





Unit 3b Bridge House
Station Yard
Thame
Oxfordshire
OX9 3HU
Tel: 01869 365203
07768 635501
derek.flint@scas.nhs.uk

Dear Member of the Community,

South Central Ambulance Service NHS Foundation Trust has long subscribed to the fact that the quicker we can have a suitably trained person, with the appropriate equipment; to a member of the public during a life threatening emergency, the better the chance of survival and making a good recovery.

A few years ago we launched a charity division called “Community Responders”, this initiative depends on members of the community volunteering within their local area to respond to emergencies giving lifesaving treatment prior to the ambulance arriving.

Volunteers are given 2 full days of training at one of our training Centre’s, explaining how to recognize and treat many life threatening medical emergencies, ranging from cardiac arrest to strokes in the elderly down to infants, to name but a few of the situations the volunteers may face.



Once they have successfully completed the course they are supplied with an Automated External Defibrillator, breathing equipment and a mobile phone. The volunteer responders can then respond, to an emergency in their local community and tend to the needs of the most vulnerable, whilst an ambulance is on route. Due to the close proximity of the volunteer responder to the emergency they are very often first on scene and their actions can directly affect the

outcome of the patient, this will have an impact on the lives of the their family and friends within your community.

We are currently looking for volunteers to be a part of this lifesaving scheme to help within your community. Do you have a few hours a week to spare? No prior medical knowledge required as full training is given.

If you would like to find out more then visit our website
<http://www.southcentralambulance.nhs.uk/get-involved/howdoivolunteer.ashx>

Or get in touch by email cfr@scas.nhs.uk or derek.flint@scas.nhs.uk
Tel 07768635501

Priory House, Dunstable

From the Book 'Historic Inns of Dunstable', by Vivienne Evans

While staying in Dunstable during 1109, King Henry I arranged for Augustinian canons from Colchester to open a house in London. When they had finished, Henry asked them to open a third house - The Priory of St Peter, Dunstable.

Each canon was an ordained clergyman and would pray for King Henry. They were not strictly enclosed and could run his new town and provide accommodation for travellers. Royal parties and bishops stayed with the prior, poor travellers in the almonry and the sick in the hospital, but the majority of travellers stayed in The Hostel - now **Priory House**. The prior recognised the importance of the hosteller. The canon chosen had to be able to converse with both gentlemen and ladies, and supply food and drink, plus cups, spoons, towels, bedding, a candle and a good fire.

Priory House outlasted the canons' departure in 1540 because Henry VIII



© O. Roucoux (1982)

originally planned a new cathedral. Unable to afford it, he made Richard Greenway, from Aylesbury, 'Keeper of the Mansion and Gardens'. Later, it passed to Sir Leonard Chamberlain MP and from him to a Dunstable family. In 1590, Elizabeth Ames, describing the house in her will, included a big hall, open to the roof, with a central fireplace, a parlour, lined with a waincot, and a bedroom, lined with painted cloths.

After the Civil War, Dr Robert Crawley MD (of Someries, Luton) bought the Mansion House and '5 acres called by the name of The Pryory'. His grandson, Dr Thomas Crawley, treated patients with nervous diseases as paying guests, mixing kindness, good food and medicine. After he died, in 1752, it frequently changed hands until, in the 1830s, London hat manufacturers, Munt and Brown, opened a factory



© Bruce Turvey (June 1989)

employing 200 bonnet-sewers. Their manager, Samual Collis, lived in Priory House with his wife and nine children. The factory closed c1907 (part of the wall is still visible today) and Mr and Mrs Munt

lived in the Priory House. In the mid 20th century, it became Dunstable Council's offices, then commercial offices, before re-opening in a hospitality role in the new millenium.



Edlesborough W.I.

Our May meeting was held on Tuesday 12th in the Memorial Hall. We had no speaker this month as we planned to discuss the resolution to be voted on at The AGM next month at the Royal Albert Hall. It was a public affairs resolution: 'This meeting calls upon HM Government to remove the distinction between nursing care and personal care in the assessment of the needs of individuals, in order to advance health and wellbeing.'

Elizabeth Braiden presented the proposal and information related to it. A lively discussion followed.

After the business side of the meeting, we sat down to a supper of wine and cheese, with lots of informal chatter! The supper was prepared by Jane Jones and her small band of helpers, much to the enjoyment of all. The cakes were a lovely surprise!

Next month we meet on 9th June when the speaker will be Chris Ward, with a talk entitled 'Things you never knew about garden birds'.

Arrangements were also made for our coach trip to the Savill Gardens and Eton College gardens on 13th June, plus various other plans for later in the year.

✉Maureen Shipway

St Mary's 100 Club

Congratulations to the following winners:

June 2015

1st Prize – Mel Grundy

2nd Prize – Roger Wilkinson

3rd Prize – David Mann

If you would like to join the 100 Club please collect a form from www.stmaryseatonbray.org.uk/Groups/100-club or from St Mary's Church, Eaton Bray.



A 'home-from-home' childcare provider dedicated to enriching children's lives through learning and play

pacey Member

Ofsted Registered Childminder
Eaton Bray
Contact Tania Tel: 07818 088 481
childmindingeb@yahoo.co.uk

Eaton Bray Cricket Club 100 Club Winners

June 2015

£15 Angela Quinn No.69

£10 John Pearson No 24

Eaton Bray Cricket Club is kindly sponsored by Meadow Marquees, Houghton Insurance & Gastex Services

Focus is now online at
www.thefocusmagazine.co.uk

Dagnall Weather Station (AONB)

Weather Conditions for May 2015

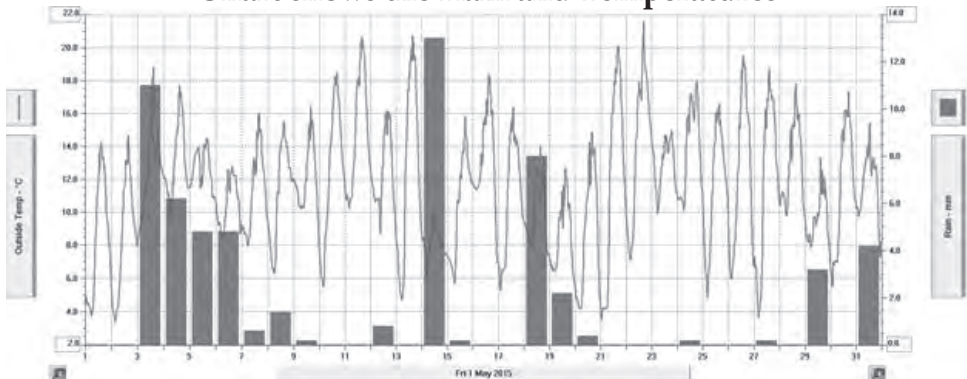
Elevation: 450 ft - Latitude: 51° 50' 13" North - Longitude: 0° 33' 34" West

At the start of May the weather was unsettled with the SW winds bringing rain and strong winds with gusts peaking at 40mph. The temperatures were on the low side; there was only 3 days when it rose above 20°C. You will see from the plot below the temperature followed the same pattern throughout the month; not particularly warm days and chilly nights not the summer days we were looking for.

I am still having problems with one of the web sites (www.dagnallweather.co.uk) this stopped working on the 6th April and so far I have not been able to fix it. For now on please use (http://bit.ly/weather_dagnall) this will give you more information and is updated every minute.

	High	Date/Time	Low	Date/Time
Temperature:	21.7°C	22 May 17.00	3.3°C	2 May 04.00
Mean Temperature	11.6°C			
Dewpoint:	14.3°C	25 May 18.00	1.3°C	2 May 03.30
Humidity:	96%	3 - 5 May	35%	14 May 14.30
Barometer:	1026.7 mb	16 May 23.30	985.8 mb	5 May 07.00
Wind Speed	40 mph SW	5 May 18.00	Months avg.	6.8 mph
Wind Chill:	21.6°C	22 May 16.30	1.6°C	2 May 05.30
Dominant Wind:	w			
Rainfall *T= total rain days and moisture. R= Actual rain				
*Rain Days: 17(T), 17(R)		Wettest Day 14 May	13.00 mm	0.512 ins
Monthly Rain:	Total	May 2015	61.40 mm	2.417 ins
Yearly Rain:	Total	5 Month	246.30 mm	9.697 ins

Chart shows the Rain and Temperatures



For weather data 24 hours a day, updated every 1 mins, visit: http://bit.ly/weather_dagnall this site forecast and much more.

If anyone has a question, comment or wishes to contact me please email: david@dagnallweather.co.uk or telephone: 01442 843883.

Dagnall weather now has an app for your ipad & iphone! Just go to the apple store, search for Wunderstation and follow the instructions to Dagnall Weather Station. Now updated every minute.

Give Bowls a Go!

Open sessions for you

Every Tuesday at 2pm

Every Friday at 6pm

May to September

CHEDDINGTON BOWLS CLUB, your friendly local Club, is for everybody – all ages: beginners to experts.

Our Open sessions are an ideal opportunity to get to know bowls and refine your skills. Come with trainers or flat soled shoes. We will supply the rest.

Cheddington Bowls Club, The Recreation Ground, High Street,

Contacts: Nigel on 01442 824 679 or Sue on 01296 668 772



Sponsored by www.wisechoicewills.co.uk • 01525 220644

fitness 4 fun

Get those muscles working! Tone and strengthen arms, legs, bums and tums – you'll look and feel great.

Why not give it a go? Only £5 per week for one hour of fun fitness. Pay-as-you-go, come when you can.

Come along and join our friendly group. Everyone welcome.

No need to book – just show up.

What: Fitness4Fun with Kay
Where: Edlesborough Memorial Hall
When: Every Friday, 10:00-11:00 am





Salvation Sound



Superstition

Are you superstitious? Do you believe in the existence or power of the supernatural? What did you do or think about when in February and March we had "Friday 13th"? (The next one comes along in November.) For some, the very mention of the date strikes terror into their hearts. How did number 13 come to be thought of as unlucky? Was it to do with Judas Iscariot when at the last supper, he was the 13th guest and left to betray Jesus? Why is Friday ill-fated? Was it because Jesus was crucified on that day? Well, if this is so, why then do we term it "Good Friday"?

Why do you "touch wood"? Wear a lucky charm? Never walk under a ladder? Carry a rabbit's foot? What about scary things like "Ghosties and ghoulies and long leggaty beasties and things that go bump in the night". - Pixies, elves, goblins, fairies and sprites.

The eternal battle between good and evil; is that the basis of our thoughts? After all if something is good and true we attribute it to God, and that which is wicked to the devil. We just seem to know this, - we did not read it, we did not learn it, we just know. Call it intuition.

Here we are living in the 21st century yet still this is an age of lucky charms, mascots, horoscopes, fortune telling and yes, superstition. I prefer to believe that life is not in the fanciful hands of fate or chance, but that God made us to fulfill a purpose -

- Love is better than hate,
- Kindness is better than cruelty
- Beauty is better than ugliness
- Truth is better than lies
- Goodness is better than badness.

A word from the Bible. Leviticus 19v31 in the King James version says, "Regard not them that have familiar spirits, neither seek after wizards to be defiled by them. I am the Lord your God. Deep down somewhere inside you there is belief in God. Perhaps it is overlapped with doubt. Perhaps you push it to one side because scientifically you cannot prove it. Yet, it still is there.

Do you have doubts about the Christian faith? Honest doubt is healthy because it leads to the discovery of truth. Learn to put your trust in Jesus - not in superstition. It states in Proverbs "Happy is the one who finds wisdom and who acquires understanding". What is wisdom? and how do we find it? for some the answer lies in academic study. Others claim it is through the university of life. According to the author of the book of Proverbs the answer is much simpler. "The fear of the Lord is the beginning of wisdom" (ch9 v10

✍Maureen

**The Salvation Army,
Booth Place, Eaton Bray
Weekly Activities**

Sunday
Footprints (Sunday School) 9.45-10.45am
Morning Worship 11am
Songs of Praise 4pm
(3rd Sunday of the month from May to Dec)

Tuesday
Coffee Morning
(alternate weeks) 10-11.30am
Music practices (all welcome) 7.30-9pm

Wednesday
Home League 2.30-3.30pm
(Ladies Mtg but all welcome)
Champions Challenge Club (term time)
(Ages 5-10 years) 5.45-6.45pm

Thursday
Parent and Toddler Group
(Term time) 9.30-11.30am
Haberdashers' night
2nd Thursday of month 7.45 pm
Ladies Fellowship
(Last week of month) 7.45pm

*For further details please call Envoy Hilary
01525 222087 / 07932 057490
E: hilary.chadwick@salvationarmy.org.uk
W: www.salvationarmy.org.uk/eatonbray*



Premier Garage Doors & Gates



Quality Garage Doors

- ✓ Superb choice of designs in metal, wood and fibreglass
- ✓ Any size door made to your requirements
- ✓ Large selection of spares & fast repair service available
- ✓ New or existing doors converted to automatic
- ✓ Professionally fitted by own expert craftsmen
- ✓ Prompt free estimates & advice
- ✓ We cover all areas



(EST 1984)

DIY kits available
Insurance work welcome
Council approved
Remote control gates also available



Unit 7, Sparrow Hall Farm, Leighton Road, Edlesborough LU6 2ES

01525 220212

www.premiergaragedoors.co.uk

FLOORING

@JANES

BORROW OUR
SAMPLES
and
CHOOSE
YOUR FLOORING

WE MEASURE
& QUOTE

WE ARE
COMPETITIVE

WE CAN UPLIFT
& DISPOSE
OLD FLOORING

WE EMPLOY
OUR OWN
FITTERS

WE HAVE
SHORT
LEAD TIMES

WE WILL
LOOK
AFTER YOU

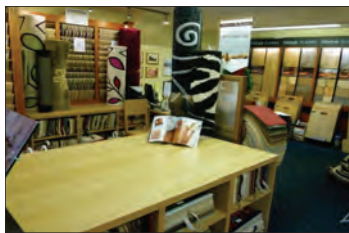
WE LOVE
YOUR LOCAL
WORK




BROCKWAY
KIDDERMINSTER



Karndean
Designflooring



lifestyle
FLOORS

4—8 HIGH STREET, EDLESBOROUGH, LU6 2HS
01525 220208 www.janesltd.co.uk