

A vibrant, low-angle photograph of a traditional maypole. The central pole is white and extends from the bottom left towards the center. It is surrounded by several other poles, all of which are wrapped with numerous colorful ribbons in shades of red, yellow, green, blue, and purple. The ribbons are tied in loops and swirls, creating a dynamic, circular pattern. The background is a clear, bright blue sky. The overall composition is energetic and celebratory.

Focus

May 2015

**The local village magazine just for Us!
Eaton Bray, Edlesborough, Northall & Dagnall**

*The White Horse Inn
At Eaton Bray*



Market Square
Eaton Bray
Beds
LU6 2DG
01525 220 231
www.thewhitehorseeatonbray.co.uk

Come along to

BRAYFEST

Eaton Bray's festival of beer, Wine
and accompanying food!

FRIDAY 1ST MAY TO MONDAY 4TH MAY

10 real ales

Worldwide wines

sausages and cheeses

from around the world

plus great entertainment all weekend

more details soon

Focus Magazine Committee

Joint Editor: George Crutcher

7 Summerleys, Edlesborough 221637

Email: george.crutcher@tiscali.co.uk

Joint Editor: Sally Siddons

34 Wallace Drive, Eaton Bray 221733

Email: sallysid@hotmail.com

Dagnall Representative: Sue Cawdell

10 Deans Meadow, Dagnall 01442 842200

Circulation Manager: John Plater

41 Church Lane, Eaton Bray 221095

Treasurer/Leaflet Enquiries: Ken Coates

10 The Nurseries, Eaton Bray 220868

Advertising: Sally Siddons

34 Wallace Drive, Eaton Bray 221733

Design and Layout: Tracey Moren
(Moren Associates Limited) 01525 229695

Printed by: Priors Press

Dunstable 01582 699851

Copy for publication to the Editors or one of the following by the **10th of the month:**

Kevin Cabbage

'Larums', Eaton Bray Road, Northall

Val Barrow

3 Chestnut Close, Dagnall

Focus accepts no responsibility as to the accuracy or content of any advertising or articles published in 'this' magazine neither do they reflect the opinion of members of the Committee.

© Articles published in Focus may not be reproduced without permission.

Focus would like to remind contributors that the deadline for articles is the 10th of the preceding month.

Kindly Note

If the event you wish to advertise falls in the first week of the month, it is advisable to get the details into Focus a month earlier. The magazines are not delivered from the printers until the first of the month, therefore it takes a few days for them all to be circulated throughout the village.

✉ Editors

Village Hall Bookings

To book your local village hall for an event please contact the following:

Northall: Lorna Cabbage Tel: 01525 220361

Eaton Bray: Norman Lee Tel: 01525 222831

Dagnall: Elizabeth Coates Tel: 01442 842550

Edlesborough Memorial Hall: Penny Pataky, Tel: 01525 229358

Police Contact Numbers...

making neighbourhoods safer together

General Assistance (Recommended Number): 101 Emergency: 999

Bedfordshire Police (Eaton Bray)

Leighton Buzzard Police Station/Kathryn Horgan: 01582 473418

Typetalk: 18001 01582 473418

Email: LPT.LeightonRural@bedfordshire.pnn.police.uk

Thames Valley Police (Edlesborough, Dagnall & Northall)

PCSO Jackie Dodson Mobile: 07800 703 524

Email: NHPT@thamesvalley.pnn.police.uk

Village Diary May 2015



Weekly

- Mon-Fri (term time) Eaton Bray Pre-school, Eaton Bray Lower School, 01525 220468
- Mon-Fri (term time) Dagnall Under 5's, Dagnall Village Hall, 9.15am - 12.15pm, Mrs Ann Tobin 07816 358342
- Mon-Fri (term time) Edlesborough Pre-School, Edlesborough School, 01525 220431
manager@edlesborough.bucks.sch.uk
- Mon-Thu (term time) Totternhoe Pre-school, mornings, Totternhoe Lower School, Michelle Urbanowicz on 01582 668841
- Mondays Pilates, 10.45am, St.Giles Church Hall, Totternhoe, Lisa: 07799 893489
- Mondays (term time) 2nd Eaton Bray Brownies, girls 7-10 years, Edlesborough Memorial Hall, 6 - 7.30pm,
Contact Sandra Counsell 07979 521900
- Mondays Dagnall Community Choir, All Saints Church 7.45 – 9.45pm
- Mondays Weight Watchers, 7pm, Eaton Bray Village Hall
- Mondays (term time) Movement and exercise classes with a dance flavour, Northall Village hall 2-3.30.
Contact Jan 01442 864271.
- Mondays Curtain Call Youth Theatre 5-7.30pm, Eaton Bray Village Hall, Gavyn 01525 220525
- Mondays Curtain Call Theatre Group - 7:30-10:30pm Eaton Bray Village Hall, Sheila -
sdtwinkletoes@yahoo.co.uk
- Mondays KFFA ISTD Classical Ballet classes, 3+yrs, 4.15pm, Edlesbrough Memorial Hall,
www.kfpa.co.uk
- Tuesdays Line Dancing, 1.30-3p.m., Eaton Bray Village Hall, Lyn Stubbs 220731
- Tuesdays Pilates, 10-11am, Eaton Bray Village Hall, Nicky Roussou 07861 162680
- Tuesdays Totternhoe Baby & Toddler Group, 9.30-11.30am, St. Giles Church Hall, Ruth Allen,
01525 222468 or 07796 265174 or email ruthallen002@gmail.com
- Tuesdays Northall Baby & Toddler Group, 9:30-11:30am, (open in the Summer School Holidays)
Northall Village Hall, Stacey Richmond 01525 222999/07957 607592
- Tuesdays Tap & Ballet Classes, JoAnn Latus School of Dance, 4-8pm, Eaton Bray Village Hall,
01582 620576
- Tuesdays Circuit Training - Edlesborough School Hall, 7-8pm - www.simplesfitness.com
- Tuesdays Coffee Morning, Bring & Buy, Table Top Sale, 10-12noon, Salvation Army Hall,
Booth Place, Eaton Bray
- Fortnightly Cheeky Monkeys Under 5's playtime, 1pm - 2.45pm, Eaton Bray Village Hall, contact
Rachel on 07789 760007
- Weds (term time) Pilates, 7.15pm, Northall Village Hall, Lisa: 07799 893489
- Wednesdays Egyptian Dance Class, 7.30-8.45pm at Eaton Bray Village Hall. Contact: Soraya on
07976 964316 for more details
- Wednesdays Northall & District Age Concern Wednesday Club, 10am - 3pm, Northall Village Hall,
Contact Anna on 07854 230243
- Wednesdays Dynamic Yoga 6.30-7.30pm £5 Eaton Bray Coffee Tavern Keira 07936 693696
- Thursdays Yoga, Northall Village Hall, 11.30am-1pm 01525 377542
- Thursdays Baby & Toddler Group, Salvation Army Hall, Booth Place, Eaton Bray, 9.30-11.30am
- Thursdays Keep Fit, Edlesborough School, 8pm Tel: 01582 668735
- Thursdays Jazzercise, 9.30-10.30am, Eaton Bray Village Hall, Angela Veryard, 01525 715208
- Thursdays KFFA Street dance classes 4+yrs 4pm, Edlesborough Memorial Hall, www.kfpa.co.uk
- Thursdays Central Bedfordshire Children's Centres' Toy Library, 9-9.45am, Eaton Bray (School
Lane) Public Car Park
- Fortnightly Keep Fit class, Edlesborough Mermorial Hall 10 - 11am
- Fridays Tap & Ballet Classes, JoAnn Latus School of Dance, 4-8pm, Eaton Bray Village Hall,
01582 620576
- Fridays (term time) "Little Luvvies" baby ballet classes 10am-11.30am. Contact Emma Whittemore on
01525 376124

Village Diary May 2015



Fridays (term time)	Kids Club 6:00pm to 7:00pm Grace Baptist Church, Edlesborough (across from the post office)
Fridays	Crazy Abs abdominal workout - 6-6:30pm, Edlesborough Memorial Hall - www.simplesfitness.com
Saturdays	Jazzercise, 9.30-10.30am, Eaton Bray Village Hall, Angela Veryard, 01525 715208
Saturdays	Drama Class for Children, 10.35am-12.35pm, Eaton Bray Village Hall, Claire Casey, 07792 508591
Saturdays	KFPA Musical Theatre classes 4+yrs www.kfpa.co.uk , 10am, Edlesborough Memorial Hall
Sundays	Sundays Worship at 11:00am and 6:30 pm Grace Baptist Church, Edlesborough (across from the post office) Barry 01525 229610 or Peter 01525 221048

Monthly

1st Monday	Eaton Bray Parish Council Meeting, 7.30pm, The Coffee Tavern
1st Monday	Eaton Bray W.I. Meeting, 7.30pm. Eaton Bray Methodist Church Hall. Contact Barbara Collier on 01525 221401
1st & 3rd Tuesday	Dunstable & District Orbit (social and charitable) Club meet at Dunstable Rugby Club at 8pm. For details contact 01525 222441 or 01582 755147
1st Saturday	St. Mary's church, Eaton Bray Coffee Morning & Plant Sale, 10am - 12 noon
1st Sunday	May to September, St Mary's Church, Edlesborough Open Day, 2-5pm
2nd & 4th Tuesday	TOTS, St Mary's, Eaton Bray, 2pm
2nd Tuesday	Dunstable & District Local History Society meeting, 7.45pm, Methodist Church Hall, Dunstable (opposite Wilkinson)
2nd Tuesday	Edlesborough W.I. Meeting, 7.30 pm, Edlesborough Memorial Hall
2nd Wednesday	St.Mary's Ladies Guild, 2pm, St.Mary's, Eaton Bray
2nd Wednesday	Eaton Bray & Edlesborough Lions Club, 7.30pm, The Coffee Tavern
2nd Thursday	CAMEO Coffee, tea & chat, 10am-12noon, Edlesborough Methodist Church
2nd Saturday	Workshops Dynamic Yoga 9.30-11am £10 Eaton Bray Coffee Tavern Keira 07936 693696
3rd Thursday	Edlesborough Parish Council Meeting, 7.30pm, Memorial Hall
3rd Sunday	Lunch club 11.30 to 2.00pm, Eaton Bray Village Hall, Chris Hewitt 222288
Last Saturday	Coffee Morning, 10-12 noon, Edlesborough Methodist Church

Other Regular Events

3rd	Beds Area Narrow Gauge Model Railway Club Meeting, 11.30am-4.30pm, Eaton Bray Village Hall
8th	Leukemia Research Coffee Morning, 2 Dunstable Road, Dagnall 10.30 am. All welcome.
9th	Cafe Community, 11am-1pm, Eaton Bray Methodist Church
19th	Dagnall Over Sixties, Ploughman's lunch in Dagnall Village Hall with Kensworth Over Sixties followed by Bingo with Chrissie Smith.
25th	ELF walk from Eaton Bray church 9:30am

One Off/Annual/Irregular Events

4th	EDaN Beautification Team Car Boot Sale, Edlesborough Green, Sellers 8:30 £10 per car, Buyers 9am to 12 noon.
4th	Rotary Club of Dunstable Antiques Fair, 10am to 4pm, Dunstable Leisure Centre
10th	Appledown Fun Dog Show, 11am, Harling Road, Eaton Bray, Beds LU6 1QY.
10th	Ashridge Spring Plant Fair, 11am to 4pm
13th	Eaton Bray Methodist Church Evening of Music
14th	ELF visit ot Audley End House
16th	Salvation Army Super Sale, 10am to 1pm, Booth Place, Eaton Bray
16th	1st Eaton Bray & Edlesborough Scout Group Beetle Drive, 5pm, Edlesborough Memorial hall, Tickets Catherine 01525 222512

Village Diary May 2015



One Off/Annual/Irregular Events Cont'd

- 16th The Lions Club of Eaton Bray & Edlesborough Comedy Night, 7:15, Eaton Bray Village Hall. Tickets £10 Box Office: 01525 229656
- 17th Eaton Bray Lawn Tennis Club Family Play Day, 2-5pm
- 19th Dagnall Village Hall A.G.M. 6:30pm, Dagnall Village Hall
- 23rd - 25th Tree Fu Tom Live at Whipsnade Zoo
- 23rd St Mary's Ladies Guild Coffee Morning, 10am to 12 noon, St Mary's Church
- 23rd Music at St Mary's Eaton Bray, Concert by Dunstable Ladies Choir, 7:30pm, Tickets: £7.50, Box Office: 01525 222283
- 23rd -25th St Mary's Pitstone The 35th Annual Festival of Art and Flowers. Sat 23rd 2-6pm, Sun 24th 11-5pm (Evensong at 6pm), Mon 25th 11-6pm

Village Notices

FOR SALE
8 Golf clubs
3 to 9 irons Regal Pro
Donnay Driver
Good condition

£25
Tel 07734 111654

FOR SALE
Black and Decker
Electric Strimmer

Good working order

£10
Tel 07734 111654

Focus Distributor Wanted

After many years of support, our distributor for Wellhead has decided to retire, so we need a willing volunteer to take over. Ideally someone living near the location, but the person that takes on this round would need transport as there are a few houses on the main road.

Please ring John Plater on 221095 as soon as possible if you are able to help.

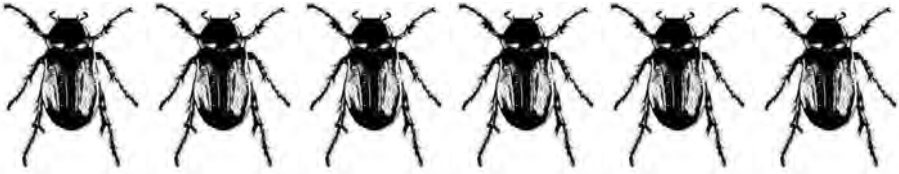
Many thanks

✍️Editors



EDaN Community Transport
Peter Williams: 01442 842506

1st Eaton Bray & Edlesborough Scout Group are holding a



BEETLE DRIVE

Saturday 16th May 5pm at Edlesborough Memorial Hall

A fun game for all the family from 4 to 94!

Prizes for the winners

Tickets cost £4 per adult, £2 per child or £10 for a family ticket (2 adults & 2 children). Attendance numbers are limited so please contact Catherine Evans on 01525 222512 a.s.a.p. to secure your tickets.

Please bring along a plate of savoury or sweet food for a shared buffet tea during the interval.

Tea, coffee and soft drinks will be provided or BYOB.

There will be a raffle and proceeds from the evening will go towards the Scout Hut Extension.

ST. MARY'S LADIES GUILD
INVITE YOU TO A
COFFEE
MORNING

IN AID OF CHILDREN'S AIR
AMBULANCE

SATURDAY 23rd MAY
ST. MARY'S CHURCH
10am - 12 noon

CAKES -- PLANTS -- CRAFTS
BRIC A BRAC -- RAFFLE

ENTRANCE: ADULTS £1
INCLUDING REFRESHMENTS

SALVATION ARMY
SUPER SALE
SATURDAY MAY 16th

BOOKS BRIC-A-BRAC
BARGAINS GALORE
TABLE TOP DELIGHTS FOR
YOUNG AND OLD
SAVOURY SANDWICHES OF
SAUSAGE OR BACON
SCONES WITH JAM & CREAM
SO MUCH TO SEE & SAMPLE
COFFEE OR TEA
AVAILABLE BETWEEN
10am and 1pm
SALVATION ARMY HALL
BOOTH PLACE
EATON BRAY
ADMISSION FREE

Services at St Mary's Church

SUNDAYS : **8.00am** HOLY COMMUNION
 10.00am PARISH SUNG HOLY COMMUNION

On Third Sunday of each month:

10.00am – WORSHIP FOR EVERYONE a shorter, less formal service for families. (For anyone wishing to attend a service where Holy Communion is offered, there is a Family Communion at 10.30am at All Saints' Church, Dagnall, where visitors are assured of a warm welcome).

WEEK-DAYS:

Tuesday: 2.00pm TOTS (Tots on Tuesdays) (2nd & 4th Tuesdays)

Wednesday: 10.00am Holy Communion

EVERYONE WELCOME AT THESE SERVICES

Eaton Bray Methodist Church

On the first Sunday in March Shepherd Combo talked us through Jesus' confrontation with the traders and money lenders in the Temple and asked us to be alert not to deviate from God's wishes. Our delightful Mothering Sunday service was led by Jackie Stamp. We all reflected on time spent with our mothers, what we had learnt from them and the great

gifts of our parent God in the midst of our church family. Our third Sunday in March saw the welcome return of our Minister, Rev Nigel Wright following his Sabbatical leave. His sermon reminded us that God's answers to our prayers are not always in the form we expect so we need to be open to different solutions. On Palm Sunday Lawrie Renfrew visited our pulpit and helped us to consider how to deal with life's storms, remembering Jesus' promises to see us through whatever calamities we may meet.

Our Cafe Community on Saturday March 14th was a very enjoyable occasion with a large number of customers, animated discussions and a convivial atmosphere.

Dates for your Diary:

Cafe Community

Saturday 9 May 2015, 11.00am - 1.00pm.

We will be delighted to see you if you come to join us for a cup of tea or coffee and/or a light lunch.

An Evening of Music

Wednesday 13 May 2015, with Dunstable U3A Choir and The Memory Lane Sextet, followed by refreshments. Free admission but voluntary donations gratefully received.

Annual Garden Fete

Saturday 6th June 2015 at Chestnut Lodge, Great Billington

**EATON BRAY WI
INVITE YOU TO A**

**COFFEE
MORNING**

THURSDAY 11TH JUNE

10am -12 noon

**EATON BRAY
METHODIST HALL**

CAKES GIFTS

BRIC A BRAC

RAFFLE

ENTRANCE £1

INCLUDING REFRESHMENTS

A Letter from Rev'd Coralie

Vicar: Coralie McCluskey

The Vicarage, 11 High Street, Eaton Bray - Tel: 01525 220261

Honorary Assistant Priest: Revd John Heffer

Reader: Gordon Gray (220136)

Church Warden: Catherine Hayden (220527)

Email: admin@stmaryseatonbray.org.uk

www.stmaryseatonbray.org.uk



Christian Aid Week runs from 10th - 16th May and the familiar Christian Aid red and white envelope will once again drop through your letter box and the hope is that every household will contribute something to helping our brothers and sisters across the world in dire need.

This year the appeal features Loko Jarso. Loko is responsible for a family of eight and struggles to feed them. Four times a week, in a remote corner of Ethiopia Loko makes a back breaking eight hour trip to gather wood. Gathering and chopping firewood up a mountain, is a hard, dangerous job that she dreads but it is her only source of income and she receives £1 for every heavy load. Loko walks alone, her shoes are so thin that thorns repeatedly pierce through to her feet and she is frightened of being attacked by hyenas, because there's no one around to hear her screams.

In the Borena community, girls are expected to fetch and carry wood and water to provide for their family. Denied a good education and the respect of their community, women are trapped in a life of poverty. Loko's faith sustains her and as she walks she prays, "I ask God to change my life and lead us out of this".

Christian Aid has worked in Ethiopia for more than 30 years, initially responding to emergencies but gradually building a long-term development programme. Their work has focused on food security, secure livelihoods, health, economic justice, energy and climate change. They work with local partners to deliver programmes that bring about lasting change for vulnerable and marginalised people. Christian Aid want their work to result in thriving, resilient and equitable communities where people, their assets and their livelihoods are resilient and where previously disadvantaged individuals and communities feel increasingly able to influence decisions affecting their lives. Working solely through local partners, they are in a position to influence local organisations, to increase the gender sensitivity of their programmes as well as improve their accountability to the communities they seek to support.

The Women Support Association (close to my heart) works to improve the lives of women and communities affected by poverty and inequality. With Christian Aid's support the association has set up women's self-help groups and micro-credit schemes to enable women to become self-sufficient and economically independent. These groups also provide a forum for women to discuss key social and family issues that affect their lives.

Let us give thanks for the resilience, resourcefulness, leadership and courage of the women in Ethiopia and give generously.

Coralie



Your Christian Aid Envelope

Churches Together has been organising the Christian Aid collection in the four villages for many years and each year the organisers try to arrange for collectors to call in as many roads as possible. It has never been possible however to cover **every** road and even if an area is usually covered, some years there may be difficulties if the regular collector is on holiday or unable to collect for other reasons.

If during Christian Aid Week, a collector does not call, please consider making your contribution by dropping off the envelope you receive with Focus, at one of the churches - most of the churches have a letter box, so just drop it through! These church and chapels will be happy to receive your contribution: Eaton Bray and Edlesborough Methodist Churches, Salvation Army, Eaton Bray, Baptist Chapel in Northall and All Saints, Dagnall. You can also leave your envelope in St Mary's Church, Eaton Bray.

Eaton Bray 12th Village Hall Beer Festival Friday 5th and Saturday 6th June

Yes it's that time of year again! The Village hall crowd, along with help from our very best friends from CAMRA are bringing you another Beer Festival full of exciting beers, ciders and perrys.

Add to that superb entertainment along with fabulous food what more can you ask for? Well the first thing we will be wishing for is some cool weather prior to the Friday so our beer can settle nicely, then the sun can come out for both days so you can all enjoy the full fun on both days. We open at **12 noon on Friday 5th**, so how about a quite drink in the afternoon accompanied by something from the BBQ (all burgers and sausages are made by D & E Hines) or visit the kitchen, which has a selection of traditional hot food, not to forget soft drinks for younger folk and wine or lager for those who are not into real ale.

In the evening **Jerome Chance** will entertain you with some fabulous music to round the evening off.

Saturday 6th June starts again at noon.

We, as usual, have a Children's entertainer who will thrill your children and spend time after his performance making balloon models with the children. Later, for the first time, we welcome **The Dicemen**, a local group who will get us all in the right mood for the evening.

Our entertainment is finished off this year by Bob Thompson who will take to the stage for the final set of the night.

So as you can see, this is set to be our best Beer Festival ever. Do come along and enjoy a great time.

As, I am sure you know, the profits from the Festival go to help in developing Eaton Bray Village Hall, and this year we have already purchased 100 new chairs (which, as they are all fabric covered, will not be out!). The interior of the hall will be redecorated this summer, so as you can see your enjoyment helps to maintain this superb facility for our village.

For any further information just ring or email me, Ross, on 221411 or ross.bagni@btinternet.com



UNICORN WINDOWS LTD

“WHERE QUALITY & SERVICE ARE NOT A MYTH”

www.unicornwindows.co.uk

Tel: 01525 854272



Unit 3 Youngs Industrial Estate, Stanbridge Road, Leighton Buzzard

comput@mation
computer support & services

Computer Support for Business & Home

Problem Solving:

Virus & Spyware Removal
Internet & Email Assistance
Fault Diagnostics
Repairs & Upgrades
Slow Running PC's

Sales:

Desktops, Laptops & Tablets
Printers & Peripherals
Software

Services:

PC, Mac & Linux Support
Wired & Wireless Networks
Data Recovery
Install & Set-up
Health Checks

On-site Visits:
Office Hours & Evenings
by appointment

For friendly advice call John Wallace: 07968 536068 or 01525 261381
Email: john@computamtion.co.uk
Web: www.computamtion.co.uk

Computamtion Services Ltd - Est.1999 with over 25 years experience
9a Lower Way, Great Brickhill, Buckinghamshire, MK17 9AG

Carpet & Upholstery Cleaning

Professional & Local

All work guaranteed - not happy, don't pay

Powerful equipment means drier much quicker than other methods

100% Guaranteed no chemicals left in carpet when dry therefore will not easily resoil & perfectly safe for children & pets

Recommendations account for 90% of my work

Absolutely no hard sell

Telephone Colin for a Free Quote

DEEP-CLEAN

01525 851 811

www.deep-cleaners.co.uk

Email: colin@deep-cleaners.co.uk

EDLESBOROUGH SURGERY

11 Cow Lane Edlesborough

Enquiries - 01525 221630 Appointments - 01525 220333

www.edlesboroughsurgery.co.uk

Dr J R Bell, Dr Heather Counsell

Dr Tisha Patel

Dr Stephanie Johnston, Dr Kirsten Riemer

Friendly village Practice offering a wide range of health services including coils/implants, minor surgery, travel advice, in house blood tests, on-line appointments and repeat prescription ordering. Four Nurse Practitioners offering acute clinics with same day appointments. Also, midwife, health visitors in attendance. Local District Nurse Service.

Long established training Practice with a rotation of qualified doctors.

EDLESBOROUGH PHARMACY

01525 223181

Pharmacist – Mitul Patel

Friendly reliable professional service at the pharmacy

All doctors/dentists/veterinary and hospital prescriptions dispensed

Professional advice always available

Herbal/Homeopathic products

Special Orders on request

Stagecoach Theatre Arts
 An hour to sing, an hour to dance, an hour to act... A lifetime to Perform!

Please contact the Principal, Wendy Ashman
01442 823181
 leightonbuzzard@stagecoach.co.uk
 www.stagecoach.co.uk/leightonbuzzard
 www.facebook.com/stagecoachleightonbuzzard



SING! DANCE! ACT NOW!



Theatre Arts Schools
Stagecoach



MMH
Plumbing & Bathrooms



City & Guilds
 Qualified

- Full Bathrooms Installations inc Design, Supply, Tiling
- All General Plumbing work from : Leaking Showers
 Dripping Taps • Toilets not flushing • Radiators • Drains

Call Mark for a **FREE** no obligation quote **01525 220994**
 All work fully insured and guaranteed. **07842 653832**

Barry Cato
Motor Repairs

— Est. 1981 —

Servicing, repairs and MOT's arranged
Workshop at:
 r/o Norfolk House Farm, Harling Road
 Eaton Bray, Dunstable, Beds, LU6 1QY
Tel: 01525 221681 (workshop)
07836 650015 (mobile)

30 Years Experience
Domestic & Commercial Security



Burglar Alarms
Redcare Monitored Systems
Intercoms
CCTV
Access Systems
Locks



CERTIFICATE NO. NACG/2113

Quality Installations – Competitive Prices
Insurance Approved **Free Surveys**

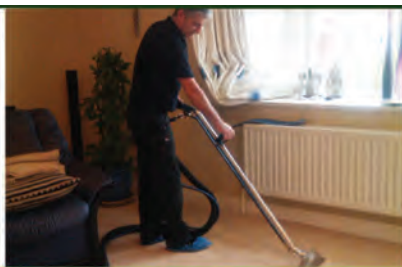
AAA SECURITY

01525 378222

Email: sales@aaasecurity.co.uk

www.aaasecurity.co.uk





Local family run business - Not a franchise

All chemicals used are Eco-friendly, non-toxic, non caustic and non allergenic

All work guaranteed and fully insured

All products are Child, Pet and Pregnant Safe

- Ovens & Hobs
- Extractor Hoods
- Microwave Ovens
- Agas
- Fridges
- Carpets
- Rugs
- Upholstery
- BBQs
- Freezers



☎ 01525 22 19 22 or 0800 122 3393

🌐 www.ecotechovenandcarpetcleaning.co.uk

@ info@ecotechovencleaning.co.uk

Dominic Woolcott

Painter & Decorator



- Internal & External
- Plastering & Coving
- Insurance Work
- 20 Years Experience
- Competitive Rates

**For a professional job call:
01525 229682 or 07747 042879**

P. DYER ELECTRICAL

For all your Electrical & Testing & Inspection needs

- Re-wires
- Testing & Inspection
- Security Systems/Lighting
- LED & Low Energy Lighting
- Decorative Lighting
- PAT Testing
- Fuse Boards
- Fault Finding/Repairs

Fully insured, Part P registered, all work guaranteed.
Fast, friendly, reliable, local electrician. For a free,
no-obligation estimate, call Paul on:



Tel: 01525 222109
Mobile: 07850 682815



David John Harris



(Established 1992)

All Fencing Work • All Gates • Paving • Patios
Driveways • Shingle • Hedge Setting and Cutting
Grass Cutting • Turfing Specialist • Exterior
Painting Service • Sheds Small Building Work
Trees & Shrubs Supplied

Tel/Fax: 01525 221745
Mobile: 07889 143713

WASHING MACHINE REPAIRS

ALSO
DISHWASHERS, TUMBLE DRIERS,
AND ELECTRIC COOKERS



Call
ANDERSON D.R.S.

01582 665764

www.andersondrs.co.uk
SALES AND RENTALS AVAILABLE



GYM & TONIC

WANT TO GET FIT, HAVE A
HEALTHIER LIFESTYLE & IMPROVE
THE WAY YOU LOOK & FEEL?

The following can be provided in our
Gym in Edlesborough or in your home

- * A Health & Fitness Consultation *
- * Personal Training * Massage *

Ruth Anderson Dip. PT & ST, Member of: Inst of Sports
Therapists & Register of Nutritional Therapists

Tel:01525 223074 Mob:07812 163979



For all your painting & decorating requirements
 Domestic and Commercial
 call Max for a free estimate with no obligation
maxbro@btinternet.com

Abbott Flooring

- Carpet & Vinyl
- Laminate & wood flooring
- Domestic & commercial
- Supply, fitting & adaptations
- Next day delivery
- All work guaranteed
- Free no obligation quotes
- No job to small

We provide a friendly, professional service at very competitive prices. If you require us to supply & fit or you just need some flooring fitted then give us a call.

Telephone 01525 220249
 Mobile 07958 244536



High Street Hair

66 High Street , Eaton Bray, Nr Dunstable, Beds. LU6 2DP

01525 221252

www.highstreethair.co.uk

Monday	Closed
Tuesday	9 - 6
Wednesday	9 - 6
Thursday	9 - 8
Friday	9 - 8
Saturday	9 - 5

A Professional modern salon, Providing
 Quality hair & nails services for the whole family.



JESSICA



TIGI®

think car, think...

smartAUTOGROUP



Established locally for over 10 years

Car servicing, M.O.T & repairs
Bodywork & maintenance
Mobile car body repairs
Accident & vandalism damage
Alloy wheels, scratches, dents, stone chips & scuffs
Fully equipped bodyshop & workshop
Complete diagnostic equipment
Dealer trained master technicians
Genuine parts



Competitive pricing – up to 50% cheaper than main dealers!

£10 off with this advert

Work Guaranteed • Free Vehicle Collection & Delivery • Customer Pick-Up & Drop-Off

Call us on **01582 664772** or visit www.smartautogroup.co.uk

Units 17 & 18a, Icknield Way Farm, Tring Road, Eaton Bray, Dunstable LU6 2JX



Bathrooms, Design & Installation

Tiling ♦ Heating ♦ Powerflushing ♦ Taps ♦ Leaks

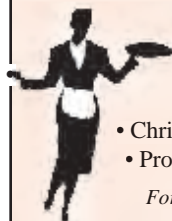
Call Outs ♦ Free Estimates Given



01525 222145



07971 559185



Patricia's Cuisine

Catering For All Occasions

- Buffets, Dinners •
- Christenings, Weddings, Funerals •
- Promotions & Business Lunches •

For Enquiries & Menu

Meadside Farm, 104 High Street,
Eaton Bray, Bedfordshire, LU6 2DP

Telephone: 01525 222174

P.J.BRINKLOW

Electrical Contractor

01525 220469

07860 781330

**43 Peblemoor
Edlesborough**

pinstripes signs
pinstripes graphics
pinstripes clothing

01525 220485
07973 167779

BUSINESS CARDS

www.pinstripesigns.co.uk

find us on facebook
pinstripes signs graphics clothing

Mark Janes Contracts

**Felt Roofing - All Roofing Repairs
and Property Maintenance**

FREE ESTIMATES



t: 01442 877528

m: 07841 343470

e: mark.janes3@btinternet.com

Established 25 years

*Approved Contractor
for Local Authorities*

For all your building needs look no further



BRIGGS



BUILDING & CARPENTRY SERVICES

Established 1981

For a professional, friendly service call:

(01525) 221767

(07970) 214439

Domestic & Commercial

Extensions
Renovations
Conversions
Alterations

New Builds
Roof Repairs
Kitchens
Bathrooms

Patios
Driveways
Decking
Garden Walls

Mini Digger, Skip Loader and Dumper Hire

All Work Guaranteed

Free Estimates

**The Rotary Club of
Dunstable**

Antiques Fair

Dunstable Leisure Centre

Bank Holiday Monday

4th May 2015

10am and 4pm

Admission £2 per person

**All the profits go into the
Benevolent Fund**

**NORTHALL & DISTRICT
AGE CONCERN
(The Wednesday Club)**

Annual General Meeting

Thursday 4th June 2015

At 7.30 p.m.

Coffee Tavern, Eaton Bray

**Members of the Public are
Invited to attend**



*St Mary's Church,
Edlesborough
will be open from May
until September on the
first Sunday in the month
from 2pm to 5pm*

Friends of Ashridge

Spring Plant Fair

Sunday 10th May 2015

11am-4pm

*Ashridge Estate Visitor
Centre*

Free entry

*Thousands of plants for sale
from private gardens and
commercial nurseries*

*More info and plant donations:
John Cartwright 01442 864 984*

*NT Ashridge Estate Visitor Centre,
Monument Drive, Ringshall, HP4 1LX*

Don't Miss the Edlesborough Festival 2015!

Saturday June 20th and Sunday June 21st

The secret is out! The Edlesborough Festival is back. Put the date in your diary and don't miss this wonderful weekend at our magnificent Church on the Hill.

We are inviting you all to an incredible two days of music, art and ale. Choirs, cuppas, bubbles and other wholesome, happy moments at Edlesborough Church on the Hill's annual festival.

Open the door. Come on in! Socialise, smile, pull up a pew and sit yourself down to share a tremendous time with friends family, neighbours and strangers from near and far.

Now in its 3rd year and held in our beautiful 800 year old church, we bring you two days, one night and a fabulous festival.

This year looks set to be simply sensational! All funds raised will help keep the church open to the community, improve facilities and encourage more events to be held in this iconic landmark.

Saturday June 20th is devoted to music (and flowers)!

- Start the day with beautiful blooms and join our flower arranging workshop, with Phrena Wilkinson at the helm. Create your own fresh scented decoration to be displayed in church throughout the festival weekend.
- In the afternoon our annual children's Choirfest will be opened by the Rt Hon John Bercow MP. Youngsters from local schools will be entertaining us and warming hearts with their songs and smiles.
- In the evening we will be sitting back to enjoy our 'Chill on the Hill' – a night of top entertainment at a fraction of West End and worldwide prices! All of our artists have performed at our previous

festivals and around the world - and are back by demand!

The Musical Menu!

Opening up the 'Chill on the Hill' are the glorious, traditional RAF Halton pipes and drum band. They will be performing at the Edinburgh Military Tattoo in August but you don't have to travel to Scotland to hear them perform. Come and witness their military magnificence and splendour in Edlesborough!

Returning from the first ever Edlesborough Festival is the superbly talented opera singer Jess Bergman, who is currently training at the Royal Academy and stunning audiences locally, nationally and internationally. Don't miss.

Five star sensational pianist and vocalist Alex Miles will take us to piano heaven with a superb set of songs, a smile that lights up a room and a glow of professionalism that leaves her audiences stunned, satisfied and shouting for more!

There will also be a journey of jazz favourites from talented local musician friends who will be bringing back joyous rhythms and well known jazz oldies.

A licensed bar will keep you topped up. Beers, Pimms, wine and many more of your favourite tipples and nibbles.

Sunday June 21st

Come and enjoy a 'Jolly Good Sunday'! 12 – 3pm (and some jolly good local brews!)

Come on up for our 'Jolly Good Sunday' at the Church on the Hill! We've got cream teas, music, ale, art and a view to take your breath away.

We will be bringing you a lovely lazy laid back afternoon of indulgence. Take a walk up the steps, sup a few ales and beers in our marquee or tuck into some tasty

Sunday nibbles. Our Festival of Local Ales, Local Music and Local Art will be part of a great afternoon of indulgence.

We are also appealing for locals to turn up with their talent and step up to strum, hum, sing, serenade or play a musical instrument (with no pressure) at probably the best acoustic venue for miles

The Edlesborough Bell Ringers and a Songs of Praise Service with Coralie at 5.00 p.m. will round up a perfect few hours at a perfect location.

Put the date in your diary and please get in touch if you can offer your talent to our acoustic afternoon? We are looking for a few more unplugged acoustic only musicians who want to share their songs, music and merriment in our superb Sunday Best Jolly Good Sunday afternoon of entertainment. Please email juliachilds@tiscali.co.uk if you would like to perform.

Sunday's Art Workshop (11am-3pm) - orchestrated by local artist Megan Howells - is limited to 12 places at a cost of £20 per student (beginners or experienced) to include materials. Our Saturday Floral Workshop (10am-12 is free of charge. Please contact Chris to reserve a place for either on 01525 220739 or email chris@brooklyns.org.uk

To buy tickets for Saturday night's 'Chill on the Hill' call into our friendly ticket agent: Janes, 4-6 High Street, Edlesborough, alternatively Wyn and Vicky Johns 01525 221744. Available from 1st May.

Tickets may be for sale on the door if not sold out - dare you chance it?

COME AND SUPPORT YOUR LOCAL FESTIVAL! It's a hidden gem in a venue that quite simply takes your breath away. Open the door, and come on in!

EDaN Community Transport Scheme

Invitation Tuesday 12th May 2015 @ 7pm



We would like to invite all our **existing drivers** for Community Transport to the Red Lion public house, in Main Road North, Dagnall, on **Tuesday 12th May @ 7pm for a drink and some light refreshment.**

We would like to say Thank You for the wonderful service you are providing for your local community and to chat about how everything is going for you as a volunteer for EDaN Community Transport.

We would also like to invite anybody thinking of **joining as a new driver** to come along and speak to some existing drivers and see how it all works. You will be under no obligation whatsoever if you decide not to join.

Please just turn up on the evening or if you would like any more information on

any of the above, or would like to let me know you are coming, please give me a call on 01442 842796 or 0779 0537032.

Looking forward to seeing you all there.

Best wishes

✍️Kathy Bovington On behalf of the EDaN Community Transport Team - helping in the local community



Marjorie Gorham

20-3-1917 to 16-2-2015

Brian, Tina and family would like to thank everyone for their kind messages, flowers and donations to Macmillan

St Mary's Village Carnival 2015



The Sea

4th July 2015

24 Hours in St. Mary's Carnival

The Carnival is only 2 months away; preparations start quickening from now on. To allow 6 hours of Carnival on Edlesborough Green the procession of floats, bands, performers and a whole range of local village nutters begin to gather at the Orchards Eaton Bray from 9 or 10 O'clock. The procession needs to be put in order, the residents of the Orchards must be able to enter and leave while leaving the road closed to all other vehicles. At 11 O'clock the floats are judged and prizes awarded ready for the procession to leave at 12 noon. Eaton Bray and Edlesborough High Streets are closed with Police coordination. This all happens before the Carnival opening proper on Edlesborough green, however, the final activities needed for a successful Carnival day have started many hours before this!

At 6pm on Friday 3rd July volunteers, vans and lorries will gather at Eaton Bray village hall. Orders for collection are given: collection from the Vicarage and Edlesborough School, collection from the Industrial Park on Tring Road, tables to be gathered from many sources. Food and drink must be prepared and be ready for Saturday morning. Look at the main roads through Eaton Bray and Edlesborough between 6 and 9pm on Friday 3rd and you will see vehicles zig-zagging around the village getting equipment in place for Saturday morning.

If you are out walking the dog, running or cycling from 6 am Saturday you will see the dance start again in reverse. All the preparations of the night before now heading to Edlesborough green in a disparate convoy of lorries vans and

cars. The tea tent to be erected, tables to be delivered, fun fair and castles to be coordinated into position, the arena to be prepared, food and drink to arrive, barbeques to be readied, fridges and freezers to be installed, breakfast for the volunteers helpers to be mustered, arrival of all participants to be registered and coordinated into the correct location, car parking to be organised. And then there are .. wheely bins and bags to be put in place, skips to arrive and be position, portable toilets to be plumbed, metal posts and tape erected for no go areas, the public address system to be connected, scaffolding for the plate smashing to be built .. and it is still only 10 or 11 O'clock.

When the procession leaves The Orchards road closures need to be coordinated, the pace of progress checked and the floats ushered onto the Carnival site ensuring safety of all excited participants and onlookers as the Carnival begins. But don't forget ..

.. when the sun begins to go down and the green starts to empty take a moment to look back as you leave, at the huge fun rides, stalls, tables, tents, gazebos, waste bins, skips, barbeques and any rubbish that may be on the grass. It won't be there at 6am on Sunday .. it will be gone by 8pm Saturday, all moved by volunteers that make the Carnival possible.

So, if you can spare an hour here and there you'll get as much fun out of helping organise Carnival as being there. If you'd like to get involved make contact by telephone or through the web site given at the bottom of this article

Get Involved in Your Carnival!

Here is a further reminder for local businesses, schools, youth groups, and organisations that might want to support the Carnival and have their organisation promoted during this event. Here's how:

- Advertising in the Carnival Programme – delivered to all the households in Dagnall, Eaton Bray, Edlesborough and Northall.
- Advertising in the arena.
- **Have a float in the Carnival procession**
- Have a stall at the Carnival.
- Donating a prize for the Grand Draw.

Women's Health Week: 10-16 May 2015

Often seen as something embarrassing, as many as 1 in 3 women experience some form of women's health problem during their lifetime, some taking 10 years before seeking help, unaware that physiotherapy may be the solution.

Common women's health issues include pelvic floor problems following pregnancy, urinary frequency/urgency or leaking urine whilst coughing, sneezing or exercising.

There are various treatment options available, ranging from simple lifestyle changes such as advice on bladder and bowel habits, diet & fluid intake to exercises and electrotherapy.

Getting specialist help can change your life:

- Allows you the freedom to go about your daily life without having to worry about your bladder problems.
- Restores confidence and self esteem.
- Helps you regain a good sleeping pattern.
- Allows you to exercise with confidence.
- Combined with other exercises it can help prevent or ease back pain.

- Donating a prize for the Silent Auction. All details of Carnival 2015 including how to book a stall, arrange advertising, offer prizes and much more can be found on the Carnival website:

www.stmarysvillagecarnival.com

For any specific questions or if you would like to get involved with organisation of the carnival either by helping for a few hours on the day or providing assistance in the months before July contact Gordon Gray on 01525 220136 or through the carnival website.



As part of Women's Health Week 10 – 16 May, Moira D'Arcy, Women's Health Physiotherapist from St Judes Clinic, will be offering free information and advice at her clinic in Leighton Buzzard. Make a change for the better and book in a free advice session today. **SPECIAL OFFER SAVE 10% off an initial women's health assessment when you quote "WHFOCUS."**

For more information contact:



**St Judes Clinic,
26 Lake Street
Leighton Buzzard
LU7 1RX**

☎ 01525 377751

**📧 www.stjudesclinic.com
enquiries@stjudesclinic.com**



Tree Fu Tom LIVE

at ZSL Whipsnade Zoo
from 23 - 25 May 2015

Tree Fu Tom Live and the Tree Fu Tom Trail are free for ZSL Whipsnade Zoo's visitors to enjoy and explore during half-term, alongside thousands of animals across the 600 acre Zoo, including elephants, tigers, lions, giraffes and meerkats.

ZSL Whipsnade Zoo is a flagship Zoo for international conservation, science and education charity the Zoological Society of London, and profits are used to work for wildlife in more than 70 countries around the world.

Tree Fu Tom Live:

**Runs Saturday 23rd, Sunday 24th
and Bank Holiday Monday 25th
May**

Five fifteen-minute shows daily

Free entry (to Zoo visitors)

Tree Fu Tom Trail:

**Runs Saturday 23rd to Sunday 31st
May inclusive**

Includes Tree Fu Tom themed spotters sheet and trivia for use in Butterfly House
A free activity for Zoo visitors

ZSL

Founded in 1826, the Zoological Society of London (ZSL) is an international scientific, conservation and educational charity whose mission is to promote and achieve the worldwide conservation of animals and their habitats. Our mission is realised through our ground-breaking science, our active conservation projects in more than 70 countries and our two Zoos, ZSL London Zoo and ZSL Whipsnade Zoo. For more information visit www.zsl.org

Tree Fu Tom fans are in for a giant treat this May half-term, when the leaf-size hero makes an appearance at ZSL Whipsnade Zoo.

To celebrate the opening of the Zoo's brand new, immersive Butterfly House, young visitors will be magically transported into the tiny world of Treetopolis, an enchanted land where movement creates magic.

The UK's highest-rated TV show for 4-6 year olds has created a fully-staged, 15-minute live show that uses play and movement to get Tree Fu Tom's fans up and active. The moves in the show are designed to help develop movement skills, strength and balance in young children.

Visitors will also be able to explore the new Butterfly House throughout May half-term with a special Tree Fu Tom Trail, featuring spotter sheets, trivia and lots of butterflies like Tom's friend Ariella.

Dagnall Village Hall Committee

Annual General Meeting 2015



The Annual General Meeting of the Dagnall Village Hall Management Committee will take place on **Tuesday 19 MAY at 6.30pm** at Dagnall Village Hall. All residents of Dagnall aged 18 and over are welcome to attend and eligible to vote. The following officers of the committee will be elected:

Chairperson

Secretary

Treasurer

Bookings Officer

Anyone wishing to stand for election to one of the offices may obtain a nomination form from the secretary (telephone 842129). We have a vacancy this year for Secretary; please let a Committee Member know if you can help – about an hour a week and making a difference to

our Village.

Village organisations currently represented on the committee are Dagnall Under Fives, Gardeners' Society and Dagnall Over 60's. These organisations are invited to appoint a person to the committee as their representative. Any village clubs, societies (or similar) not currently represented on the committee, such as Dagnall Church and School are welcome to attend the meeting in order to seek the opportunity to appoint a person to the committee as their representative.

Please do make the effort to attend the AGM – it's your village hall (and recreation ground) and you have an opportunity to have a say in how it is managed.



On Saturday 23 May St Mary's, Eaton Bray, welcomes Dunstable Ladies Choir for a concert of music covering a wide range of genres from the sacred to songs from the musicals. The choir will be conducted by their Musical Director, Richard Heyes. The concert begins at 7.30pm and there will be a bar both before the concert and during the interval. Tickets from the usual box office number 01525 222283 – and don't forget, accompanied children are admitted free.

This will be our first concert since the beginning of Lent during which, it being a penitential season, we try to avoid major Fund-raising events. You can be assured, however, that we have two sensational concerts coming up for the rest of the year that are both likely to be sell out affairs.

Richard Heyes, who is himself an outstanding musician having studied at both the Royal Academy of Music and at the Salzburg Mozarteum, will be returning in August (15th August) to accompany Min-Min Peaker for a concert entitled 'Creator and Creation'. For those of you who haven't heard Min-Min sing you are in for a treat – she has the most outstanding voice.

Both will be returning on 7 November to join with South Beds Concert Band, the choir of St Mary's and Dagnall Community Choir for our annual Poppy Prom – make sure you get your tickets early to avoid disappointment.



Min-Min Peaker

Letter to the Editor...



In the April edition of FOCUS, Edlesborough Parish Council set out the current status of the proposed development by McCann homes along with what amounts to a warning that there is little that they (the Parish Council) can do to oppose such an application. Although the article does go on to say that in the event of an application being successful the 'benefits that the development can bring to the village' will be maximised, this is small comfort for the many people opposing a development of this site.

Whilst I quite accept that the Parish Council is right to express a degree of caution in this matter, the overall tone of the article can at best be described as 'defeatist' – or perhaps, defeated before we even begin.

Those of us who are supporting SENT2 believe that the case will not be lost until every avenue has been explored and every objection voiced – not least the manner in which this project seeks to exploit a vacuum in the Aylesbury Vale strategic planning process – so please keep faith, the fight is not yet lost.

✍ Chris Banks



Change to Bus 61 Route

From 20th April the 61 bus service has been terminating in Dunstable and no longer continues to Luton resulting in an Aylesbury to Dunstable service only. This change is as

a result of the decline in passenger usage of the 61 service beyond Dunstable since the busway service started. This means that passengers wishing to travel from the villages to Luton including the Luton and Dunstable Hospital will have to change at Dunstable to a another bus service.

Dagnall Over Sixties

In April we had lunch at the Green Man and then called in at Poplars Garden centre for tea and a plant browse. Some of us were tempted to buy plug plants for baskets and tubs.

On May 19th we are holding our Ploughman's lunch in the village hall and 15 or so members from Kensworth Over

Sixties will be joining us. After Lunch we will have some games of Bingo with Chrissie Smith.

June 16th is the date for the Garden Party at 6, Dunstable Road.

Phone Rosemary on 01442843202 if you would like to join our club. All over sixties are welcome.

All Saints' Church, Dagnall

Services in May 2015

Sun. 3rd May	9.00 pm	Eucharist
	10.30 am	Morning Service
Sun. 10th May	10.30 am	Morning Service
Sun. 17th May	10.30 am	Family Communion
Sun. 24th May	10.30 am	Family Service
Sun. 31st May	10.30 am	Informal Worship

Sunday School meets each Sunday at 10.30 am except when there is a Family Service.



Thinking of Selling or Letting?



Our success is built on our reputation of excellent customer service.



www.christopherpallet.com



Offices in Edlesborough, Wendover & Aylesbury

65 Moor End, Edlesborough, Bucks, LU6 2HN ♦ T 01525 222333 ♦ F 01525 222042 ♦ E edlesborough@christopherpallet.com

IRON OUT

Complete Laundry Service
Shirt Service
Duvet Cleaning
Ironing

Free collection & delivery from home or office

01582 667332 / 07885 320042

Email: ironout@aol.com

D NICHOLSON PLUMBING REPAIRS and INSTALLATIONS

NO JOB TOO SMALL

- Emergencies • Free Estimates
- No call out charges



Dave Nicholson

MOBILE: 07976 975604

HOME: 01525 872335

City & Guilds
Qualified

R.J.O'CONNELL BUILDING SERVICES

EXTENSIONS, PATIOS,
DRIVEWAYS, ROOF REPAIRS
AND PROFESSIONAL
DECORATING SERVICE

TEL: 01296 681323

MOB: 07855 236726

Will Kimberley Garden Services 01442 255784

Phone for a free no obligation written estimate
wkgardenservices@btconnect.com

- High hedges a speciality
- Fences erected and repaired
- General garden tidy up's
- In fact any job in the garden!

Make a Will

AND LASTING POWERS OF ATTORNEY

Protect Your Home 100%

YOU DECIDE, who is to run your affairs, who gets what, guardians etc, not the State.

MINIMISE RISK of Inheritance Tax and the disinheritance of children.

Best Price Guarantee

from specialist Solicitors and professional Will Writers since 1999

FREE HOME VISIT

For a **DAYTIME** or **EVENING** appointment call

01525 220644

www.wisechoicewills.co.uk

from
CARE FEES
and
PROBATE COSTS



Will Trusts & Probate Practice

A wise choice

MAKING A WILL HAS NEVER BEEN EASIER

ASPECT

YOUR LOCAL ELECTRICIAN
TOTTERNOE
OVER 20 YEARS EXPERIENCE

ELECTRICAL

CONSUMER UNIT UPGRADES (FUSE BOARDS)
LIGHTING - INTERIOR, EXTERIOR & SECURITY
REWIRING
NEW INSTALLATIONS
TESTING & INSPECTION

ALL WORKS TO CURRENT WIRING & BUILDING REGULATIONS
PART P CERTIFICATED & FULLY INSURED

DONT TRY THIS !



CALL STEVE ON
07976 283969 / 01582 665068
aspect@sparky.me



EXCEEDING EXPECTATIONS IS JUST PART OF OUR SERVICE



If you're **selling**, **letting** or **buying** a home, make it happen with your local estate agent



01525 220605 • info@giblinproperty.co.uk
www.giblinproperty.co.uk

THE WORKTOP SPECIALIST

DELIVERING OUTSTANDING QUALITY & SERVICE FOR ALL YOUR WORKTOP & JOINERY NEEDS FOR OVER 50 YEARS

- FREE HOME MEASURING SERVICE
- CUTTING & EDGING SERVICE AVAILABLE
- VISIT OUR BRAND NEW SHOWROOM

Abbey Gate, Boscombe Road,
Dunstable, Bedfordshire, LU5 4FA

Tel: 01582 668 973 Fax: 01582 608 227
Email: sales@dunstablelaminates.co.uk
Web: www.dunstablelaminates.co.uk



@DLaminates



Dunstable Laminates



D R Property Services

Kitchens
Bathrooms
Repairs & Improvements

01525 237498
07970 260518

drpsuk.pt@gmail.com




Café masala
Exquisite Indian Cuisine

We Cater for Office or Private Parties and don't forget to try our Sunday Buffet
10% Discount on all Takeaway Orders Over £12
Fully Licensed & Air Conditioned
Open Seven Days a Week
Hours: 12 Noon to 2.30pm & 6.00pm to 11.30pm
Tel: 01525 22 22 64
63 Bower Lane · Eaton Bray · Dunstable · Beds · LU6 1RB
email: taraque@hotmail.co.uk · www.cafemasala.com

Anne Johnson D.O.
Registered Osteopath

6 Moor End,
Eaton Bray

01525 221958
07957 250682



I'M REGISTERED
Registration no. 1495
www.osteopathy.org.uk

alto window cleaning

A reliable and professional service.....

- Window Cleaning
- Conservatory Cleaning
- Fascia & Gutter Cleaning
- Solar Panel Cleaning

T: 01525 234120
M: 07807 973871

AARON FENCING

ALL TYPES OF DOMESTIC & COMMERCIAL
FENCING & DECKING WORK UNDERTAKEN

FREE ESTIMATES
FULLY QUALIFIED & INSURED
PERSONAL SERVICE AT COMPETITIVE PRICES

TEL: 01582 665779
MOBILE: 07798 927272

7 STATION ROAD, DUNSTABLE, LU5 4HS

Buy Direct From Our
Own Farm

Master Card

VISA

From **Ivinghoe Turf**

- Commercial & Domestic
- Small Orders Welcome
- Bark, Grass Seed & Fertiliser
- Laying Service
- Discount on Larger Orders
- Screened & Blended Topsoil
- All Year Availability
- Forklift Delivery Available



ROLAWN[®]
Approved Rolawn
Stockist

Family firm farming since 1949

ALL AREAS

Freephone :

0800 043 5061

www.ivinghoeturf.com

The Bungalow, Vicarage Farm, Ivinghoe, Leighton Buzzard

YEARDYE

Luxury Bathrooms

A family-run
business for
over 25 years

DESIGN
SUPPLY
INSTALLATION



www.yeardyeluxurybathrooms.co.uk

email: bathrooms@yeardye.com
T: 01296 706220 T: 01525 222717

ARC Contract Services Ltd

- Painting & Decorating • Plastering
 - Wall & Floor Tiling • Door Hanging
 - Bathroom & Kitchen Installations
- 20 years experience

All work guaranteed and fully insured

Call Adrian : **01582 539179**

Mobile : **07789730580**



WESTROPE BROS.

LAWN MOWER SERVICES

ALL TYPES GARDEN MOWERS SERVICED

THE RYE, EATON BRAY

Tel: Eaton Bray 220587

Gas Boiler Servicing

Over 40 years experience

Have your boiler serviced by a **Gas Safe**
and **CORGI** registered engineer

Other services available:

Maintenance, repair and installation of all domestic gas appliances including LPG. Boiler installations, Landlord Safety Certificates and Power flushing.

Free Quotes, no call out fee, and free friendly advice on all of the above.

Edwards Gas & Heating Services

Eaton Bray



Tel 01525 220626

www.edwardsgasandheating.co.uk
stevethegas@orange.net



Vicky

The Dog Grooming Specialist
www.vickysdogcare.co.uk



With a reputation for offering an exceptional personal service



- Over 29 years of professional experience
- Trained at the London Academy of Professional Groomers to the highest City and Guilds standard
- Dorwest Veterinary Trained
- Member of the Pet Industry Federation
- Sympathetic and gentle handling of all dogs
- **FREE** Health check with every grooming session
- **No cages used! No cage dryers!**
- One to one personal attention.....loads of TLC

Where Dogs Come First!



Mobile: 07796 445416

Telephone: 01525 222775

Email: enquiries@vickysdogcare.co.uk



Committed to the highest standards of animal welfare and customer care

Misty Double Glazing?

Over 30
Years
experience.
FREE
Quotes

Over 30
Years
experience.
FREE
Quotes

**KEEP YOUR WINDOW FRAMES...
... WE JUST REPLACE THE GLASS!**

- UPVC • Aluminium • Or Wood

Because we replace just the glass the repair is a
Fraction of the cost of a complete replacement window.

BEFORE



AFTER



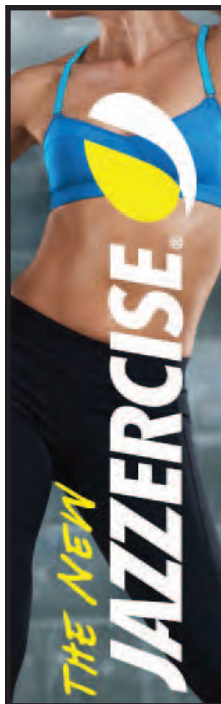
mistydoubleglazing.co.uk

QUALITY GLAZING SERVICES

01525 876808

WE ALSO REPLACE BROKEN...

- Glass • Handles • Hinges & Locks
- AND REPAIR...Patio Doors & Conservatories!**



**JAZZERCISE
DANCEMIXX
CLASSES
AT ST MARY'S
EATON BRAY
9.30am
THURS & SAT
AND
BREWERS HILL
DUNSTABLE
7.45pm
MON & WED**

**01525 715208
angelajazzercise
@gmail.com**

REVIVE HOLISTIC THERAPY

Holistic therapies are concerned with treatment through massage, manipulation and relaxation. They are not only treatments for one physical ailment or one part of the body, but also treat the person as a whole.

Ideal for today's stressful lifestyles.

Treatments include:

- Aromatherapy Massage
- Indian Head Massage
- Hot Stone Massage
- Reflexology
- Reiki

Vouchers are available for any treatment, so why not treat a loved one or friend as well as yourself.

Edlesborough based. For more information or to book an appointment call
Kate Meredith IIHHT, RGN, on **01525 221380**



*HPC Registered
CHIROPODIST & PODIATRIST*



*For visits in your home
Phone: 07981 749038*

(Also Central Luton surgery - open 6 days)

*Stuart Ball
Ceramic Tiler
Specialist
at all aspects of
Wall & Floor Tiling
Over 32 yrs Experience
01525 229381*



Stephen D. Janes

(Established in 1982)

**CARPENTRY, JOINERY
KITCHENS FITTED
PROPERTY MAINTENANCE
TELEPHONE: 01525 220649**

**G & J Groundwork
Ring Garry**
**01582 477568
07949 118011**

**Fencing Panels • Blockpaving • Paths
Shingle Drives • Slabs • Paving
Steps • Gardenwalls • New Patios
Relaying • Soak Aways • Drainage
Free estimates or advice • References
www.gandjgroundwork.co.uk**

Neil Hodson Associates

*BUILDING DESIGN
STRUCTURAL ENGINEERING*

**PROFESSIONAL BUILDING DESIGN,
ADVISORY AND DRAWING SERVICES**

From plans for domestic extensions
to multi-storey offices, commercial
buildings and factories.

Structural surveys, site surveying,
advice on building defects and
Feasibility Studies

Planning Applications and Building
Regulation Consents obtained.

**24 HIGH ST TRING
Tel 01442 890894 OR
Edlesborough 222462**



At Ian Waldron Photography we strive to capture images that are both relaxed and natural. We do this with little fuss or intrusion so you can enjoy one of the most special days of your lives! This is also true of our portraits which are all done on location which captures you and your family perfectly.

Ian Waldron
naturally relaxed photography

www.ianwaldronphotography.com
01525 221479
Your Village Photographer



CARITAS HARMONY
LUTON LADIES VOICES
CHARITY • FRIENDSHIP • COMRADES

Presents
Midsummer Melodies
The Grove Theatre, Dunstable
Sunday 21 June 2015 6pm



Guest Soloist
International Baritone
Jeffrey Carl

Adults £15 & children under 16 £7.50
Tickets available from The Grove Theatre Box Office
01582 602080 www.grovetheatre.co.uk



invites you to

Eaton Bray Methodist Church

Café Community

*Saturday May 9th
11.00am to 1.00pm*

*Relax & chat with friends,
coffee/light lunch*

All ages welcome (inc. activity area).



See you there
food for the body.....
food for thought....



Appledown Rescue and Rehoming Kennels



FUN DOG SHOW!

Sunday 10th May

**Come along to Appledown
for a great family day out!**

12 classes including Waggiest Tail & Best Rescue!

Refreshments & Stalls

Show opens at 11 a.m. Classes commence 12 noon.

Judge: Lynne Davies. Entries on the day

**Appledown Rescue & Rehoming Kennels, Harling Road,
Eaton Bray, Beds LU6 1QY. 01525 220383**

(Registered Charity Number 1116848)

Market your home with us and receive an exclusive **free microsite** for your property to be shared across your chosen social networks.



Visit **mandmproperties.tv** to find out more.
The only Estate Agent in Leighton Buzzard to offer this unique and unrivalled service.
Call us for more details

Tel: 01525 377733 | mandmproperties.co.uk | mandmproperties.tv

Live a healthy & active life

Free 10 minute advice chats with our Chartered Physiotherapists & HCPC Registered Podiatrists

PHYSIOTHERAPY
PODIATRY & CHIROPODY
PILATES
ACUPUNCTURE
SPORTS INJURIES
MASSAGE
WOMEN'S HEALTH & PREGNANCY CARE

St. Judes
physiotherapy, health and well being

01525 377751

enquiries@stjudesclinic.com
www.stjudesclinic.com

J Able bathrooms

New Showroom NOW Open in Edlesborough

DESIGN

Free CAD design of your bathroom, This will give you a photo realistic finished plan of your design.

SUPPLY

Come and browse our display suites, This will help you decide on the perfect bathroom for your needs.

INSTALLATION

Our installations are of the highest standards!
We take pride in making you delighted with the finished result.

We have suites in a wide range of styles to suit your budget.
Drop in or ring to make an evening appointment at the showroom or a home visit at your convenience.

Opening Times

Monday. 9am-5pm
Tuesday. 9am-1pm
Wednesday. Closed
Thursday. 9am-1pm
Friday. 9am-5pm
Saturday. 9am-1pm
Sunday. Closed

T: 01525 220043 M: 07891 449077

3 Summerleys, Edlesborough, Buckinghamshire, LU6 2HR
W: www.jablebathrooms.co.uk E: ableplumbing@hotmail.co.uk

fancy a break?



LUXURY 3 BED, 2 BATH APARTMENT APPROX 1 MILE FROM CENTRE OF PUERTO BANUS MARINA, SPAIN. 45 MINS EASY DRIVING FROM MALAGA AIRPORT.

ALL MOD CONS INCLUDING AIR-CON, SAT TV, FULLY EQUIPPED KITCHEN, SWIMMING POOLS, EXCELLENT CLUBHOUSE & TENNIS COURTS.

MANY GOLF COURSES AND ALL WEATHER BOWLING GREENS NEARBY. CLIMATE IDEAL FOR HOLIDAYS THROUGHOUT THE YEAR. RATES £350 - £750.

CALL PETER OR CELIA ON 01525 220173 OR VISIT OUR WEBSITE AT WWW.479LOSANARANJOS.CO.UK.

Plumm

PROPERTY

'A fresh approach to selling property' ...

IN AND AROUND YOUR VILLAGE

Phone now for a free, no obligation, Valuation of your Property

01296 660230

01442 863737

www.plummproperty.co.uk

Absolutely Plastered

**DOMESTIC/COMMERCIAL,
CLEAN AND RELIABLE SERVICE,
FREE ESTIMATES, FRIENDLY ADVICE**



- * Plastering & Coving
- * Floor Screeding
- * Pebbledashing & Rendering
- * Dry Lining
- * Cornices & Mouldings
- * Insurance Work Undertaken

CALL NICK CONWAY ON

Mobile: 07751 830716

Tel: 01296 688981

6 Cotes Way, Wing, LU7 0RB

Established over 20 Years

Duncan Tomblin

TREE SURGEON

**Forestry Contractor • Tree Felling
Crown Reduction & Thinnings
Deadwooding • Hedge Cutting
Stump Grinding • Site Clearance
Private Agriculture Fencing Contractor
Chipper & Stump Grinding Hire
Digger Hire**

**FULL PUBLIC LIABILITY INSURANCE
FREE ESTIMATES**

'The Best Choice For Your Tree'

TEL: (01525) 221946

MOBILE: (07802) 410728

12 Greenways, Eaton Bray, Beds

**christian
aid**

We believe in life before death!

Christian Aid week 10 -16 May

This is Adi's story – Adi is 46 and lives in Abunnu with her children. This is a real tale of transformation – from mourning to joy, from ashes to beauty.

I was a widow for 14 years and we didn't have anything to eat in the house – I worked as a day labourer. When **Christian Aid** came, I was selected to benefit from their project. From that day my life was totally different – I was the poorest in the village – now they borrow money from me! I am so passionate about learning, now I can see differently – I will be a success.

This is Adi's story – hope and transformation! **you can help in this!**



Eaton Bray Methodist Church

invites you to lunch

in the garden

on Saturday 6th June

from 12 midday onwards

In aid of Cancer Research

At Chestnut Lodge, Leighton Road, Gt Billington



EDaN BEAUTIFICATION TEAM



Sellers 8.30 a.m. @
£10 per car (2 metre
height restriction – no
vans!)
Access in Pebblemoor

NO NEED TO BOOK

Any queries? - contact
Christine: 01525 220739
e: chris@brooklyns.org.uk



Buyers 9.00 a.m. – 12.00

We'll be serving up
delicious refreshments
on the village green.

Come along and sample
our great bacon butties -
and grab a bargain too !

MONDAY 4TH MAY 2015

EDLESBOROUGH VILLAGE GREEN



Comedy Night

Saturday 16th May

Doors open 7.15pm – show starts at 8pm

Eaton Bray Village Hall,
Church Lane
Eaton Bray

Tickets £10.00 per person
(must be bought in advance)
Please call the box office on
01525 229 656 or 07562 939 002
or 07815 067 556



Cash bar all night. Hot & cold food served during the interval
organised by the Lions Club of Eaton Bray & Edlesborough





**Welcome to
Eaton Bray Academy**

Telephone: 01525 220468
Email: admin@eba.ec

A wonderful place to be



Patricia

Mobile Beauty Therapist

Massage & Beauty Treatments

01525 237781

07866 126510

Fully Accredited & Insured



McTimoney CHIROPRACTIC



Margie Craib BSc BHSI DC AMC MMCA
Human and Animal Treatments

Ashridge Farm, Ringshall, Berkhamsted, Herts HP4 1ND
Telephone: (01442) 842729

General Chiropractic Council Registration No. 293



Virtual administrative
support to businesses &
private individuals

Website hosting

Domain registration

Desktop publishing

01525 229695

Email:

enquiries@morenassociates.co.uk

www.morenassociates.co.uk

ADRIENNE'S PRIVATE HIRE

Call for a **FREE** quotation
Book early to avoid disappointment
Very competitive prices

Airport Transfers
& Private Hire

07980 039715

*Our executive Cars, 6 seater Minibuses and
lady driver are all available*



J.G.S. Metalwork & Son

Specialists in Gates
& Gate Automation

Access Control • Security Grilles • Railings
Balconies • Stairwells

www.jgsmetalwork.co.uk

Call in to discuss your ideas

High Street, Edlesborough LU6 2HS

Tel: 01525 220360 Fax: 01525 222786

GRASS ROOTS GARDEN MAINTENANCE

TREE SURGERY, HEDGE PRUNING,
SELECTION SUPPLY AND PLANTING OF
TREES, SHRUBS AND HEDGES.
REGULAR MAINTENANCE/ONE-OFF JOBS
(Fully Insured)

Brian McMahon NCH (Arb)

01525 221960



Edlesborough Flowers

Flowers, Gifts, Jewellery
& More...

2 High Street,
Edlesborough,
LU6 2HS

Tel: 01525 221920



**Join us for the Midsummer Festival at our picturesque medieval church on the hill
Some Festival memories -**



12th Eaton Bray Village Hall

Beer and Cider Festival

Friday 5th June/Saturday 6th June



30 Real Ales + 2 ciders and 2 perrys
Soft drinks, lager and wine available

Hot food and BBQ available

Lunchtime and evenings

Live entertainment: Friday night - Jerome Chance

Saturday afternoon Family Magic Show

Saturday 5pm The Dicemen

Saturday evening - Bob Thompson

Fri - mid-day till 11pm, Saturday mid-day till 11pm

Entrance £3 by raffle ticket

Free to CAMRA members with card proof

ILLUSTRIA

Kennels & Kathotel

Offering your pet a fully licensed Dog and Cat boarding service.

Purpose built Dog kennels

Individual Cat chalets with outdoor exercise runs

All in pleasant country surroundings

01582 ~ 665343



ILLUSTRIA
Springfield Road
Wellhead
NR Dunstable Beds
LU6 2JT



Proprietors

Mick, Denise and Michele Garrod



The Gentleman Gardener

Let your local RHS qualified gardener make your garden beautiful, from simple garden maintenance to total redesign of your garden.

Please call Barry on
**01525-222451 or
07541196384**

to pop round for a free chat.

N.D.S.

General Building & Plumbing
(25 years experience)

- Roofing; Installer of UPVC guttering, soffits & fascia boards
- Kitchens & Bathrooms fitted
- Property Maintenance
- Fencing • Patios & Block Paving
- Gazebos • Garden Structures

Tel: 01525 221470

Mobile: 07946 626564

FREE ESTIMATES

...

**ALL WORK CONSIDERED
NO JOB TOO SMALL**

For a top quality
decorating job call

Marc Flack

01525 223166

Trading locally for 10 years
References are available

Make your house a home with blinds and awnings from

**VANSAR
BLINDS**



www.vansarblinds.co.uk



- Free No Obligation Measuring And Quotations
- All Blinds Made To Measure
- Choose In The Comfort Of Your Own Home Or Workplace
- Family Run Business
- Large Range Of Quality, Affordable Fabrics And Colours To Choose From

YOUR LOCAL EXPERTS
**OVER
25
YEARS**

Call: 01525 220477 or 01582 699565 E: sales@vansarblinds.co.uk

Financially Prudent (IFA) Ltd

23 The Green, Edlesborough, LU6 2JF

Your local IFA for impartial Personal or Corporate advice on:

- Mortgages
- Pensions & Annuities
- Insurance
- Savings & Investments

Call Paul Pearce on 01525 220480 or email paul@finpru.com for a no obligation initial discussion



Financially Prudent (IFA) Ltd is authorised and regulated by the Financial Conduct Authority



Established Village Dog Grooming Service

Professional and Affordable
Large breeds welcome
Trained in Hand Stripping
Nails, Ears and Glands included

Contact Ulrika Tel 01525 211592
5 Mill Road, Stanbridge, Beds. LU7 9HX
www.abfabgrooming.co.uk

Spinney Landscapes & Gardening Services

All Aspects of Grounds Maintenance

Weed Control • Driveways & Patios
Lawn Care & Scarifying • Fencing
Turving • Tree Work
Snow Cleaning & Gritting

Tel: 01582 872084 Mob: 07876 500292
Email: chambo.1628@btinternet.com



Music at St Mary's

**A CONCERT BY
DUNSTABLE LADIES
CHOIR**

23 May, 7.30pm

St Mary's, Eaton Bray

We welcome Dunstable Ladies' Choir for our first concert since January. The choir will entertain us with a wide range of music, from the sacred to songs from the shows, under their Musical Director, Richard Heyes

Tickets priced £7.50 (children free) from the Box Office on 01525 222283.

A bar will be available before the concert and in the interval



Family Play Day

Sunday 17th May 2015 from 2 to 5pm

Join us at Eaton Bray Tennis Club
Off School Lane in Eaton Bray for an afternoon of fun
with your family, enjoy some light exercise and meet
your fellow villagers

Players Of All Levels Welcome
Whether you are a beginner or past player

Find Us Online and On Facebook

Search "Eaton Bray Lawn Tennis Club"
Any questions? Contact Sara on 07561 571-578
or Stewart on 07557 886-011

S M Reilly & Son Ltd

General Builders & Contractors



**Turning Your House into
a Home Since 1987**

*All aspects of the building
trade undertaken*

- *Extensions*Hard Landscaping*
- *Windows, Doors & Conservatories*
- *Fitting of Aluminium Bi-fold Doors*
- *Kitchen & Bathrooms*Drives*
- *Loft Conversions*

01525 221740
07970 637511

ALAN BOULT

(Light Haulage)



- TRANSPORT ● COLLECTION
- DELIVERY SERVICE
- SINGLE TO MULTIPLE ITEMS
- REGULAR CONTRACTS WELCOME

Tel: 01296 427182

Mobile: 07770 237745

Email: boulton586@btinternet.com

A McClelland

Pest Control



FOR FAST RESPONSE CALL:
mobile 0777 494 8415 or office 01582 872158

*specialists in: wasps - bees - ants - hornets
fleas - cockroaches - bed bugs - pigeons - magpies
rabbits - rats - mice - moles - squirrels - foxes - mink - feral cats*

UNMARKED VEHICLES

For further information please call
or email a.mcclelland_pestcontrol@hotmail.co.uk



Tel: 01525 221847
sales@act.uk.com



GENERALMECHANICALSERVICESLTD

VEHICLE SERVICING AND REPAIRS



**MOTs • MOT REPAIRS • SERVICING
DIAGNOSTICS • TRACKING • AIR CONDITIONING
TYRES • CAMBELTS • COLLECTION & DELIVERY
WELDING & FABRICATION • BATTERIES**

All vehicles - all mechanical work!

1 HONEYWICK LANE, EATON BRAY, LU6 2BJ

reception@general-mechanical-services.co.uk

www.general-mechanical-services.co.uk



01525 222876



Best of mind for motorists

TEL: 01582 667924



13185

"Good reputations take years to build"

GRAHAME PRATT

Plumbing & Heating Engineers

**Plumbing & Heating
Bath & Shower Room Design and Installation
Ceramic Floor & Wall Tiling
Kitchen Installation
Small Building Works**

www.grahameprattplumbing.co.uk

Email - enquire@grahameprattplumbing.co.uk

OPEN GARDENS FESTIVAL 26 July 2015

Wanted - Gardens

In Eaton Bray, Edlesborough or Northall
Would you be willing to open your garden for the day to
help raise money for charity?

If so, or you would like more information, please contact
Kay Griffiths on 222849 or Gordon Gray on 220136.



**Dunstable
Lock & Safe Co**

Locksmiths & Safe Engineers

A local family run business for over 30 years

Special Offer

5 Lever Insurance rated mortice
deadlock, supplied & fitted
Only £99.00 inc VAT

- Anti snap cylinders
- UPVC door & window locks
- Safes supplied & fitted
- Master key cutters
- Safes opened & repaired
- All locks supplied & fitted



Be one step ahead of the burglars and call us
today to discuss your security needs however
big or small

89 High Street South

Dunstable

Beds, LU6 3SF

Tel: 01582 696108

www.Dunstablelockandsafe.com

**Made to order
garden furniture & ornaments**

Call John on: 0789 506 8251



**Makes an ideal gift
for any occasion**



David Brown

Window Cleaning

Quality Reliable Service.

Regular, Occasional or
Single Visits.

Friendly Free Estimates.

Facias, Guttering & Conservatories.

External Cleaning & Maintenance.

Fully Insured.

Phone 01582 472113

Mobile 07534 837073

D & E HINES

High-Class Butchers

Quality Beef, Pork & Lamb

Grade A Poultry

BBQ & Sausage Speciality

Renowned for 'Bunkers Sausages'

Telephone: 01525 220413

98 High Street, Eaton Bray

Eaton Bray Village Hall



- ❖ Equipped to support theatrical productions and film shows
- ❖ Large car park
- ❖ Large Kitchen with a six ring cooker, large refrigerator, hot trolley, crockery etc.
- ❖ 3 separate areas to hire to meet your needs and budget
- ❖ For more information and brochure please ring Norman on 07975 797202

- ❖ Superb venue for weddings
- ❖ Fantastic place for parties and dances
- ❖ A must for children's parties, can fit the bouncy castle inside if weather dictates!!!
- ❖ Keep fit groups
- ❖ Ideal for Club meetings or functions



Dagnall School



A Buckinghamshire co-educational school

For 4-7 year olds



Dagnall School offers small class sizes, an exciting curriculum, excellent care and support and good links with the local community



Ofsted 2011
"Pupils are confident,
very happy at school
and curious to learn."



Tel: 01442 842473



www.dagnall.bucks.sch.uk

E-mail: office@dagnall.bucks.sch.uk

G.N.C Wall & Floor Tiling

Covering all aspects of tiling from
Natural Stone & Porcelain to ceramics



gnctiling@hotmail.com

Providing assurance & attendance through to
completion of works

For a free full & comprehensive quotation
please call Colin Bell

07725 033017

01525 222094

D.A. Windows Doors & Conservatories

23 Church Lane, Eaton Bray, LU6 2 DJ

Tel: 01525 221051 Mobile: 07801 798387

email: mimcavinder@hotmail.com

AUTHORISED
SWISH INSTALLER
WITH OVER 20
YEARS
EXPERIENCE

Installation of PVCu windows, doors and conservatories
Replacement glass units and window maintenance

QUALITY PRODUCTS - QUALITY WORKMANSHIP -
REASONABLE PRICES



General building
maintenance work
also undertaken
including:
Fascias and Soffits
Gutters
Fencing

Accredited Member of the
Incorporation of Plastic
Window Fabricators and
Installers Limited



PLUMBING AND HEATING

FOR ALL YOUR PLUMBING, HEATING AND GAS
REQUIREMENTS

NOSSITER AND BARNETT LIMITED
PLUMBING AND HEATING

CONTACT MATT OR JAMIE
TEL 01525 229524 MOB 07802 270427





Protecting what's important

MJ Security Systems Ltd

MJ Security Systems

Contact Us For More Information

Unit 4, Arianne Business Centre,
Blackburn Road,
Townsend Industrial Estate,
Houghton Regis,
Bedfordshire,
LU5 5DZ

Please call for a free quotation

T: 0800 0856126

E: info@mjsecurity.co.uk

W: www.mjsecurity.co.uk



We also specialise in:

- IP Cameras
- Intruder Alarms
- Access Control
- CCTV & Monitoring
- Door Entry
- Covert Cameras
- Security Lighting



FROM ONLY
£439.95+VAT
Products and
Installation



Kit includes:

1 x Wireless Door Contact, 2 x Wireless
P.I.R., 1 x Wireless Sounder, 2 x Remote Set
and Unset Fobs.

Stylish • Wireless • Secure

M . P . S

Maintenance & Property Services

- KITCHENS AND BATHROOMS
- PAINTING AND DECORATING
- PROPERTY RENOVATIONS
- PLASTERBOARDING
- FENCING

FREE ESTIMATES
NO CALL OUT CHARGE
NO JOB TO SMALL
LOCAL

Contact:- Julian

07958 306301

E-mail – mps@mustoe.co.uk
www.mustoe.co.uk

Leighton Aerials

Established 1970

**For all your aerial and
satellite needs call Colin
on 01525 374742**



Edlesborough School & Pre-School



Pupils' behaviour is outstanding...

The environment for learning is exciting and stimulating...

A real strength of the school is pupils' attitude to their learning .

Ofsted 2013

For more information about our School, Pre-School and Before and After School facilities, visit our website at www.edlesborough.bucks.sch.uk

Please contact the school on 01525 220431 to arrange a visit.

CHIMNEY SWEEP

Local & Est. Brush n Vac
Friendly, Clean and Efficient

Call **KEVIN HING** on

Tel: 01525 371592

Mob: 07940 528897

www.khing.co.uk

Member of NACS

eww

E W Wallace & Co
Chartered Accountants
Tax Consultants
Business Advisors

Small business specialists serving
Beds, Bucks & Herts

- Annual accounts
- Tax returns
- Self-employed
- Limited companies
- Small business specialist
- Sage Accounts expertise
- Prompt, personal service
- Value-for-money fees
- Free initial consultation

01525 220826

www.ewwallace.co.uk



JAMES FALCON-CROSS

LANDSCAPING AND OUTDOOR LIVING DESIGN



**ALL ASPECTS OF LANDSCAPING
UNDERTAKEN INCLUDING
FENCING, TURFING AND PATIOS
TIMBER STRUCTURES
DESIGNED AND BUILT**

VEGETABLE AND HERB GARDENS

01442 843258 / 07769 901325

ONECROSSFALCON@GMAIL.COM



Beau

HAIR AND BEAUTY SALON

- Unisex hair salon
- Hair Extensions
- Nail Bar
- Wedding, Prom Hair Styling
- Express Eyelash
- Girls Glamour Parties
- Accessories
- Loyalty Cards

01525 220926

3 Summerleys, Edlesborough LU6 2HR

For lots more offers and news about what is happening follow
and like us on  Beau Hair & Beauty  @beausalon

CND 
Shellac™

KOLESTON
PERFECT

O·P·I

Beauty
Works
CELEBRITY
CHOICE

ghd

Home or Business
IT Support



Visit Our Website at www.hobit.co.uk

Laptop Repair • Virus Removal • Data Recovery
Laptop Screen Replacement • Data Transfer
Wired & Wireless Networks • Broadband Setup
Backup Solutions • Printing Problems
Tune Ups • 1:1 Training • Email Problems
Ipad & Iphone Connectivity Issues
Computer Upgrades • Free advice

Call now 01525 378127 or 07702 80 70 90

RELIABLE - PROFESSIONAL - LOCAL

James B Chadburn FBHI Fine Antique clocks & Barometers

Specialist in repairs & restorations.

Valuations & clock finding service.

Advice & assistance on formation & disposal of private clock collections.

Quality clocks/barometers Bought & sold.



Telephone 01525 221165

Mobile 07790 000629

E-mail: info@jameschadburn.com

Reiki Therapy

Reiki means universal energy. It is a relaxing, calming therapy that calls on your own bodies natural healing properties. It is possible for Reiki to help with physical symptoms, emotional issues and spiritual growth.



Session is £30 per hour

Contact Nicola (Reiki level 2)

Mob 07941799772

01525837018

Bower Lane Eaton Bray

T. COBB

PLASTERING
FLOOR SCREEDING
PLASTER MOULDINGS
CEMENT CORNICES
RENDERING

GENERAL BUILDING & ALTERATIONS

TEL: 01525 792698 MOB: 07772 231348

Wagging Wonderful

Dog Grooming

Here to take care of your mucky pup!

- Your local grooming service in Eaton Bray!
- 1-2-1 care for your dog
- NO cages!

Telephone: 07580 343 396

Website: waggingwonderful.weebly.com

Email: waggingwonderful@yahoo.co.uk



Harmony Plus Hair & Beauty Clinic

Bridal Packages Available

We offer a range of treatments:

- 3D Lipo Fat Reduction
- Teeth Whitening
- Caci Non-Surgical Face Lift
- Crystal Clear Macrodermabrasion
- Extreme Lashes and LVL's Lashes
- HD Eyebrows
- Fake Bake Tanning
- Young Blood Make-up
- Manic Nails
- Bio Sculpture Gels
- Shellac Nails
- Hot Stone Massage
- Reiki

Call us today

Harmony Retreat

FREE SPA PLACE
in our cosy log cabin
FOR THE BRIDE ONLY

if the Bride books her Spa Hen Party
for 5 people or more at
Harmony Retreat's Log Cabin
when Hair & Makeup is booked
with Harmony Plus Hair & Beauty Clinic



Harmony Plus Hair & Beauty Clinic
6A Wallace Drive • LY6 2DS • Dunstable/Leighton Buzzard
07852 145053 • www.harmonybeautysanctuary.net



C H BUILDERS

1 Richmond Court
Eaton Bray
Dunstable
LU6 2DY

cwhawkes@tiscali.co.uk
Tel: 01525 229558
Mob: 07989 357231

Local builder with over 35
years experience in the trade,
specialising in:

- Kitchen fitting and alterations
- Extensions
- Loft conversions
- Renovations

Recommendations available

Please contact Chris to discuss
any requirements for a free
quotation

LINSLADE PHYSIOTHERAPY & SPORTS INJURY CLINIC

47a Coniston Road Linslade
Leighton Buzzard Beds LU7 2PJ



Affordable effective treatment to ..

- Relieve your neck & back pain
- Loosen your stiff joints
- Ease your arthritis
- Get you back in the game after a sports injury
- Help you recover from surgery

Why Wait To Feel Better?
Ring for an appointment now
01525 853462

E-mail: pt4u@linsladephysiotherapy.co.uk

(Ample free parking available)

Edlesborough Parish Council News

Including Edlesborough, Dagnall and Northall

Grass Cutting in the Parish

This year the Parish Council has agreed to provide additional grass cutting on significant areas in the villages of Edlesborough, Dagnall and Northall. It is greatly appreciated that many parishioners also take responsibility for cutting grassed areas in front of their properties.



New Pavilion

The Charity Commissioners have seen fit to accept Edlesborough Community Sports Club Charitable Incorporated Organisation as a Registered Charity with number 1160939. In accepting the application the Commission said *“The decision to register was based on our assessment of the information supplied during the application process and the declarations given in the trustee declaration form and we are satisfied that EDLESBOROUGH COMMUNITY SPORTS CLUB CHARITABLE INCORPORATED ORGANISATION is established for charitable purposes only for the public benefit.”*



The trustees feel that it is important that legal and other matters are now dealt with through this Charity, particularly as reassurance to the Parishioners.

The trustees made it clear during discussions with the Commission that they intend to retain the present ‘limited by guarantee’ company as a subsidiary of the Charity as there may be some VAT and other advantages. In accepting the application the Commission accepted both this and that the new Pavilion would be owned by EPC and leased to the Charity, and that the Charity would undertake much of the fund raising work.

The Parish Council wish to thank the

Chairman, Trustees and supporters of the project, in particular David Brown for the many hours of work which have made this possible.

Edlesborough Parish Council Meetings

Edlesborough Parish Council’s AGM will take place in Edlesborough Memorial Hall on Thursday 21st May 2015. The meeting will commence at 7:30pm and be followed by an Ordinary Parish Council Meeting.

All Parishioners are welcome to attend and may ask questions, raise issues and give suggestions during the Open Forum.

The full minutes of the Parish Council meetings are available to view on the website.

RFO

Owing to Lin Sargeant's absence through ill-health Penny Pataky is taking on the role of Responsible Finance Officer (RFO) temporarily.

Contact Information

Clerk to Edlesborough Parish Council:

Clerk: Penny Pataky 01525 229358

Email: clerk@edlesborough-pc.gov.uk

Website: www.edlesborough-pc.gov.uk

Facebook:

www.facebook.com/EDANParishCouncil



Dunstable & District Local History Society Tuesday 12 May, 7.45pm

The Home of James Bond

Iconic movies, ranging from *Reach For The Sky* to the James Bond series, have been produced at Pinewood Studios. Dirk Bogarde made *Doctor In the House*, Sid James was in a host of *Carry On* films and some favourite tv shows are recorded there.

Mike Payne provides a star-studded talk.

Methodist Church Hall, Dunstable

Visitors always welcome £2

Eaton Bray Parish Council

Highlights of the Meeting Minutes of Eaton Bray Parish Council Held on Monday 2nd March 2015 from 7:30pm at the Coffee Tavern

Central Beds Council (CBC)

Website: www.centralbedfordshire.gov.uk

uk - Customer Services: 0300 300 8302

/ Email: customers@centralbedfordshire.gov.uk

- Land Off Totternhoe Road, Eaton Bray:
Awaiting a decision, once known the Parish Council will be informed.

- Council Tax: Band D – the rate to be decided on the outcome of the police budget consultation: If the final decision is ‘yes’ the rate will be £1648.56, if the final decision is ‘no’ the rate will be £1615.20. Awaiting final decision.

Bedfordshire Police:

REPORTED CRIME – YEAR TO DATE		
RECORDED CRIME		
Crime Type	01/02/14 to 28/02/14	01/02/15 to 28/02/15
Violence against the Person	1	5
Sexual Offences	0	0
Domestic Burglary	0	0
Burglary Other	4	0
Vehicle Crime	2	0
Other Theft	3	2
Criminal Damage	1	0
Drugs	0	0
Other Notifiable Offences	0	1
Total	11	8

ASB INCIDENTS		
Anti-Social Behaviour	01/02/14 to 28/02/14	01/02/15 to 28/02/15
Total	3	2

News from the team:

If you wish to contact your Local Policing Team then please call 01582473411 or email LPT.LeightonBuzzardLinslade&Rural@bedfordshire.pnn.police.uk.

Non-emergency call 101

All emergencies 999

Ban On HGV Vehicles Over 7.5 Tonnes Through Parish

Funding has been agreed for Totternhoe Parish Council and Eaton Bray Parish Council towards the changes to the proposed HVG limit through these parishes. Still awaiting reply from Bucks County Council.

Tennis Club

Representatives from the Tennis Club approached the Parish Council with their plans to apply for funding towards additional improvements to the club. The club has asked if the council would agree to the renewal of the Tennis Club Lease

to be brought forward to 2015 to allow for a funding application to be placed. It was proposed that the Tennis Club put together a draft Lease (based on the original document) and present it at the council’s April meeting for further discussion.

Bus Stop-Moor End/ Three Corners

It has been brought to the council’s attention that

there have been some problems being experienced at the bus shelter the concerns have been forwarded to the police for them to look into and action accordingly. The council wished to remind residents to report any incidents direct to the local policing team - Non-emergency call 101 / All emergencies 999

Additional Information:

Elections:

**Parish Elections* are to be held on Thursday 7th May 2015, if you wish to

stand for Parish Councillor for Eaton Bray Parish Council then please contact the Parish Clerk for a nomination pack; the deadline for nomination papers to be sent to the Acting Returning Officer at Central Beds Council, Chicksands is Thursday 9th April 2015.

***The General Election** will take place on Thursday 7th May 2015. To vote in the election you must be on the electoral register. You can register online or by post, for further details go to: <https://www.gov.uk/register-to-vote>.

Future Eaton Bray Parish Council Meeting Date

Annual Parish Meeting & Annual Meeting of Eaton Bray Parish Council: Monday 11th May 2015 from 7:00pm at The Coffee Tavern (1st floor)

Parish Council Website: www.ebpc.co.uk

For full detailed copy of the minutes for Eaton Bray Parish Council please visit the Parish Council website.

A hard copy of minutes can also be viewed on the Parish Council's notice board at The Coffee Tavern.

✉ Heidi Head, Parish Clerk & RFO

Email: clerk@ebpc.co.uk - Telephone/
Fax: 01525 221464 - Website: www.ebpc.co.uk

Office Hours: Tuesday/Thursday/Friday
09:30-13:30hrs [messages can be left on answerphone]

Follow Eaton Bray Parish Council on Facebook and Twitter

Keep up to date with what is going on in your parish



Appledown's Rescue Dog of the Month

This is **Ollie**, he is a 5 year-old boxer cross. Through no fault of his own Ollie has spent most of his life in kennels. He is happy here with us but we

would love to see him settled with his own family. Ollie is a very friendly laid back boy who would live with a female dog. Due to the length of time he has been with us we would like him to have a gradual transition into his new home. Ollie will be well worth the effort as he is such a lovable character. He cannot live in Luton.

If you feel you could offer Ollie, or any

of our other dogs, a loving and secure home please call in at the kennels any day between 10 a.m. and 4 p.m. Our staff will be happy to offer advice and information. Please note that we have restrictions on rehoming dogs to families with children under 7 years of age. Full details of the rehoming process can be found on our website or call the kennels.

**Appledown Rescue and
Rehoming Kennels
Harling Road, Eaton Bray
Beds LU6 1QY**

Call 01525 220383 or e-mail:
appledown.kennels@btinternet.com

Join us on Facebook.

Visit our Website:

www.appledownrescue.co.uk
Reg Charity No. 1116848





Eaton Bray Lawn Tennis Club

In the December/January edition of Focus our very own Andy Cross opened his article with a comment regarding the clocks going back & that those lazy, balmy, summer afternoons of sunshine, blue skies and tennis are just a distant memory.

As we all know, what goes around comes around and so it is that blue skies have returned and tennis is once again on our minds as racquets are dusted off and balls bounced in preparation for increased participation at our Tuesday evening and Sunday morning club sessions.

This year there is an additional week between the end of the French Open Tennis at Roland Garros and the commencement of the Wimbledon Championships at London SW19 so hopefully the spotlight will remain on this great sport for a little longer than the usual annual two weeks or so.

Closer to home in Eaton Bray our very own Tennis Club continues to thrive under the watchful eye of Chairman, Stuart Adolph and his resolute committee. Through the hard work and tenacity of our Membership Secretary Helen Woodhead, we hope to match last year's total membership of 180 plus. Her efforts during the dark months of winter in persuading current members to opt in to the Lawn Tennis Association have already borne fruit by the award of 18 pairs of Wimbledon tickets – a 50% increase in our 2014 allotment and pro rata well above the total number of tickets awarded to several larger local Tennis Clubs

As a result of a concerted effort by super coach Sara Leavy who studied at the University of Tennessee in the U.S.A. and is the proud possessor of numerous county titles, our club can boast a Girls U16, Boys U16, U14 and U12, Green,

Orange and Red team to participate in this summer's Topspin Racquets South Bedfordshire Tennis League. She is aided and abetted by several of her charges who are now moving through the ranks of the more mature members as can be seen from the Glenn Wigley organised, Mike Venn Trophy which will have been concluded by time this article gets to print.

The seemingly constant arduous task of arranging, confirming and/or re-arranging junior fixtures falls to Debbie Williams who handles the situation with patience and a smile.

The previous mention of the Mike Venn trophy brings up another proud fact. Mike, now deceased and still very sorely missed, was one of seventeen people who attended the very first meeting, to discuss the formation of a tennis club, in January 1987 in the Coffee Tavern. His wife Judy is one of six of those attendees still active, perhaps all a little slower with maybe one exception – said modestly – in Eaton Bray Tennis Club and several other members can boast of a 25 year long association such as Dave Hillman our tournament organiser. The name of Darren Kerins looms large on our tournament honours board but hopefully some of Sara's lads will attempt to wrest the singles title from him come September. Modesty, however, prevents too much time being spent on tournament results especially in terms of longevity. Who would have thought that a 1989 champion would still be fighting fit 25 years on and with considerable help from 1996 champion Roy Cook would also have secured a Bedfordshire County Doubles title? (Well it was the Over 65's trophy)

The Tennis Club committee, assisted by David Provan, are currently in negotiations with the Parish Council to extend our lease

for another 25 years. Throughout the life of the Club we have received consistent and valued support from the Parish Council and hopefully we have reciprocated by giving people in Eaton Bray and the surrounding areas an outlet to exercise, make new friends and generally become a valuable asset to the local community.

On Sunday May 17th from 2 until 5 p.m. we are holding a Play Day for members & non-members alike. An advert appears elsewhere in this addition of Focus so please come along and support us. Whilst hopefully singing the praises of our Club a

mention here that the Focus magazine is also a very valued asset to all of our local villages and something to be proud of.

May all of us, me included, continue to live and prosper and no doubt, sometime in the future, like that well known High Wycombe traffic island "Handy Cross" he will complete a 360 degree turn to once again regale you all with less serious, but informative tales and articles.

✍Peter Hale



There is Bias on the Green!

We each have our little prejudices and bias. Like you and me the bowls used at your local **Bowls Club** have a bias - the curve of its run. And, a bit like people, to get a bowl to do exactly what you want it to do is a challenge, which is why bias ensures the game of bowls is so compelling and fun.

With a bias every bowl like a cricket ball responds to changing ground and atmospheric conditions. No two shots are the same. Bowls is an easy game to get into but to be consistent takes practice.

Rosemarie and myself joined Cheddington Bowls Club 5 years ago and quickly fell in love with bowls and with Cheddington Bowls Club.

Bowls is relaxing, yet demands concentration and helps us stay flexible. Bowls is suitable for men and women of all ages.

We have made so many new friends. Members come to our very friendly Club from all around the area: Tring, Dunstable and Leighton as well as all the local villages. The Club is full of banter and good fun. There is usually a cuppa available, or something stronger from the bar, if needed.

Whether you play for fun or to be in competitions; bowls, on the green in the summer or indoors and short mat formats in the winter months, has added greatly to the enjoyment in our lives – and I haven't mention the Club's social events!

Cheddington Bowls Club can do the same for you.

✍Tony Duke



GIVE BOWLS A GO OPEN SESSION: each Tuesday 2pm & Friday 6pm, from May till September **You will not regret it.** Just bring yourself (and perhaps a partner or friend), some trainers or flat soled shoes. The Club provides the rest, including FREE coaching.

For more info contact: Club Secretary on 01525 220644/ tony.duke@btinternet.com

Take a look at our website: cheddingtonbowls.org.uk

Cheddington Bowls Club The Recreation Ground, High St. LU7 9AA

Dementia Awareness Day

We are aware, due to the increasing numbers of people who are being diagnosed with dementia, it is necessary to raise awareness among the general public as far as possible.

DEMENTIA AWARENESS DAY MONDAY 29th JUNE 2015 10.00 - 4.00

We would like to invite you to drop-in to a Dementia Awareness Day at Eaton Bray Village Hall.

This day is organised by a social enterprise training company called Vivalo, together with a registered charity, Excel 2000.

Vivalo trains people working in the care sector on 'Communication through Activities'.

Excel 2000 trains carers to enable them to provide gentle structured movement and fun.

Our aim is to make this day a community project.

We hope that everybody who serves the communities of the South Bedfordshire

villages will attend this important informative day. This will enable networking and communication which will in turn help further understanding and support for dementia.

The Dementia Awareness Day will consist of: talks on the physical and psychological aspects of dementia, communication games and activities, Excel 2000 exercises with music, networking with local interested organisations and massage. Residents will be invited from local care homes.

The day will start with COFFEE AND BISCUITS at 10.00. LUNCH will be at approximately 12.30 - lunch will not be provided but you are welcome to bring your own lunch.

TEA AND CAKE

Finish at 4.00 p.m.

We would really appreciate your presence on this day.

Please contact Pat on 07801754602

or email Fran on:

fran_m_taylor@yahoo.com

Little Gaddesden Bowls & Croquet Club

Once again this season, the Little Gaddesden club offers you the unique opportunity to play two sports for the one membership price. The open days are the best time to visit us and try out (Saturday 9th May and 6th June for Bowls, Sunday 17th May for Croquet) otherwise any Monday Morning 10-12 or Thursday evening 18:00-20:00 for bowls and any Sunday morning at 10 for croquet. We hold numerous events during the year with bowling competitions at all levels. Also the club puts on social sessions, quizzes, film evenings or you can just come and have a drink at our fully licenced bar

and watch the others. We have qualified coaches and an encouraging youth policy including low cost entry.

Come and meet us!

✉ Alun March

www.lgbcc.co.uk

0771 934 2854



Community Choir

I'm Sorry I Haven't a Clue



If you enjoy the Radio 4 show "I'm Sorry I Haven't a Clue" with Jack Dee having replaced Humphrey Littleton in the chair, you will not be unfamiliar with the round called "One Song to the Tune of Another". In this round, if you have not already worked it out, the teams have to sing the words of a well known song to the tune of another song.

We have a similar challenge in our choir every Monday, except that we have 4 groups trying to sing the same words to 4 different tunes all at the same time. We have the jammy sopranos who usually sing the song as we all know it. Then we have the tenors, altos and basses all singing different tunes to each other. Tunes which, if heard separately, usually sound strange, to say the least, and seem to bear little relation to the tune that the jammy sopranos are having no trouble with.

As you can imagine with good, tolerant, musical leadership including from the good singers with whom we are blessed,

it gradually falls into shape and there is much satisfaction when it does so. We have pieces like "Zadok the Priest" (the cleric whose name could only, initially, be mentioned in whispers, for fear of frightening members of a more nervous disposition) and Handel's "Hallelujah Chorus" in our repertoire. They represented quite a challenge for a community choir but we beavered away and now very much enjoy getting our teeth into them.

So far - so good. However we have now been hit with a song in **8 parts** - if you please ! Every time we are asked to get it out, it is greeted by groaning and shuffling of feet, even from the sopranos.

We are hoping to have conquered it in time for our Autumn Concert Season. Meantime you can hear our more basic 4 part efforts at a Concert at St. Mary's Church in Redbourn on May 23rd.

NORTHALL BAPTIST CHAPEL

Chapel Lane, Northall

(just beyond the 30 speed limit signs on the road towards Leighton Buzzard)

Everyone is welcome to our Sunday worship each week between 11am and 12.30pm including tea/coffee and time to talk together.

For more information contact:

John Hazell 01525 218142

Email northallchapel@btinternet.com

There has been a Baptist Chapel in Northall for more than 200 years. Today we continue to seek to worship God, serve him in our daily lives and support and encourage one another in the difficult and the joyful times.

London Luton Airport

With an increase in aircraft in the area and in particular when the wind is from the East, we are getting some aircraft flying directly over the village to join the flight path into the airport. If you are disturbed by the traffic flying over the village, there is a complaints hotline number: 01582395382. This is an airport number where you can register your concerns. It is important to do this if we are to reduce these disturbances over our village.

If you need to complain about Heathrow flight noise the number is 0800 344 844. Email: noise_complaints@heathrow.com



Vansar Blinds

Celebrating 30 Years



1985 - 2015

It all began in 1985 when Mel Grundy bought a blind cleaning machine and off he went towing a trailer to offices in London to clean their old tired looking blinds. When he had finished they looked as good as new and from then on gained many happy customers. Then he started getting enquiries about the supply of new blinds for these offices he said "yes of course I can" and so the next chapter began.

17 years ago Mel decided to retire and that is when we, Mark & Sarah took up the reins. We are pleased to say that 30 years on we still supply and fit new blinds, not just commercial work but to homes, schools, restaurants, pubs, doctors surgeries and many other organisations.

The structure of the business may have changed over the years, from phone messages to email, websites and social media but reliability, friendliness and value for money is still the first priority for this family business.

We are proud to say that over 80% of our work comes via recommendations from delighted customers who come back to us time and time again.

There is always something new to look at and the colours, designs and styles have got better and better over the years. So when your conservatory is too hot, you can't see your computer screen or your children need blackout blinds to stop them waking up at the crack of dawn then we have something for you and would love to hear from you.

A window blind does not just have to be a necessity it can also be an accessory providing a whole new look to any room.

We would like to thank all of our customers for 30 years of loyalty and continued support and we look forward to providing you with our excellent service, advice and friendliness for many more.

We are offering a 20 % discount on all blinds and awnings
for May and June as our way of saying thank you.

For a FREE quotation please call us on
01525 220477 or 01582 699565
E-mail sales@vansarblinds.co.uk
www.vansarblinds.co.uk



BRAYSCOPE

Experts in commercial & domestic horticulture

For all your **Commercial**
and **Domestic** landscape
requirements

Professional and **Qualified**
landscape maintenance and
Construction company



Contact Kevin on

01525 220948 07949 601630

brayscape@aol.com

14 SCHOOL LANE, EATON BRAY BEDFORDSHIRE, LU6 2DT

Come for Coffee at St Mary's

For a warm
welcome and a
cheering cuppa
on the first
Saturday each
month in
St Mary's Church
Eaton Bray
10.00am - midday



Are you an elderly or
housebound resident ?

Would you enjoy a
monthly (free delivery) fish
and chip supper ?



If your answer is 'yes' to either of the above questions then please do get in touch.

We run this scheme on the last Friday of every month but need your orders no less than 48 hours prior to this. We have a voicemail facility on our phone if we are not there to speak to you directly. All messages will be confirmed back to you so you know your order has been received.

Please call on **01525 229 656** to place your order

Ordinary people doing amazing things





EDLESBOROUGH TENNIS CLUB

Website by Jupiterwill

www.etctennis.org

Play tennis Have fun Socialise Feel good Join our club

Join via the website, or call Iona McLean-Hall on 01525 220562 for details

Monthly
draws

New 100 Club

Spend £2 to
spend a penny

In aid of toilets and other improvements
at St Mary's Church, Eaton Bray



Contact: eatonbraychurch@aol.com or telephone: 222691

Eaton Bray Academy

The staff work exceptionally well as a team to promote children's welfare, learning and development and to make sure everyone enjoys their time at the pre-school. Ofsted 2012



Children benefit from the abundant shared resources, access to school assemblies, the information technology suite and the extensive outdoor facilities. Ofsted 2012

Pre School



How many Pre Schools do you know that are part of the Main School? Well, EBA is *one* School!

All the children wear School uniform, have their own book bag, can attend clubs and even eat our delicious School dinners, cooked on the premises by our own School cooks.

.We believe that quality Early Years education is essential; it is on this that everything is built.

We offer a caring, happy, secure and stimulating learning environment in which the children thrive.

Come and have a look!

Tel. 01525 220468 or email admin@eba.ec

Children clearly benefit and thrive as the accommodation, equipment and resources are well suited for their purpose and conducive to learning. Improvements to the premises and the outdoor area give children the confidence to explore and help all aspects of their development. Ofsted 2012

ravencounselling

Teresa Raven, accredited and registered member of the British Association for Counsellors and Psychotherapists (BACP).

Counselling offers you a safe, confidential place to work through difficulties, issues or problems you may be experiencing.

My pricing starts at £15 for an initial consultation, with further sessions priced from £40. Please contact me for more information, or visit my website.



www.ravencounselling.co.uk



ravencounselling@aol.com



07960 090113



facebook.com/ravencounselling

Make your next holiday a Disney one!
with one of our luxurious villas right on the doorstep



MINUTES FROM DISNEY



CHEAPER THAN A HOTEL



PROFESSIONAL FRIENDLY SERVICE

PersonalTouch
VACATION VILLAS

☎ 0845 5280 162

🌐 personaltouchvacationvillas.com

As former Edlesborough residents; we now own and run a family business in Florida, USA. Let us help make your Disney holiday as **PERFECT** as it can be. Our **private pool villas** (AKA 'home from home'), cater for all your needs and are **within 5 miles of the parks** - the perfect base for your trip.

Leighton Plumbing & Heating

Oil fired boilers
service, repairs
& installations



All other aspects of plumbing
& heating undertaken

Oftec registered & insured

01525 385250
07774 567472

11 Woodman Close
Leighton Buzzard
Beds
LU7 3NU

leighton-plumbing@ntlworld.com



Helping Hands
The Home Care Specialists

Est. 1989

Do you need a Helping Hand?

Our **local** care team has been providing award winning quality homecare since 1989.

We offer a homecare service **from 30 minutes per week to full-time Live-in Care**, which enables you or your loved one to remain at home with compassion and dignity.

To find out how we can help,
call: 01296 752 632 or
visit: www.helpinghands.co.uk

 **Stoten Gillam**
chartered accountants
chartered tax advisers

99 High Street South
Dunstable
LU6 3SF
Tel: (01582) 608601
www.stotengillam.co.uk

ICAEW CHARTERED ACCOUNTANTS   "Practical Solutions for Growing Businesses" 


W Roff Agricultural Services

- Hay & straw for sale
- Paddock maintenance
- Fencing

 07909 680807
ELSA GE FARM, CHEDDINGTON

Wednesdays
1pm to 2:30pm
(During term time)
Eaton Bray Village Hall
(Church Lane LU6 2BJ)

cheeky monkeys 

under fives play time

£1 per adult/child - Under 1 yr free

creative play 🍌 singing
stories 🍌 baby corner
craft 🍌 healthy snack

01582 699092 🍌
(Beehive Children's Centre)

 Come along,
make new friends
and join in
the Fun!

Coffee Tavern

Large Hall

£6.00 per hour

Commitee Room

£3.50 per hour

Large Hall &
Commitee Room

£8.00 per hour



Bookings 01525 220891

Stairlift and access ramp available

We are a nurse-led home care provider committed to delivering the very highest standards of care.

Support from our dedicated team gives you or your loved one the peace of mind and confidence to be able to continue living at home.

Family-owned and managed, we are independent and do not belong to a national chain or franchise. We are registered with the CQC, number 1-1499072841.

To talk to us about your requirements please call Helen Yates RGN on 07920887414 or 01442 843064 or email helen.yates@yourownhomecare.co.uk



**your own
home care**
putting the nursing back into care



www.yourownhomecare.co.uk



Some comments from our recent Ofsted report:

Children are consistently offered a stimulating range of activities and opportunities which enable them to make good progress towards the Early Learning Goals.

Staff have a good understanding of creating a safe and welcoming environment . . .

Staff support children well and encourage them to be active in their learning and to think critically.

We are a committee run playgroup operating five mornings a week 9:15 – 12:15 for children aged 2 to school age.

If you would like to find out if your child would be happy here, please phone our Playgroup Leader, Ann Tobin on 07816 358 342.

www.dagnallunderfives.co.uk

janes

Electrical Appliances, Bikes & Flooring Store

The Family Business with 130 years of recommendation



Free Delivery & Installation

On Kitchen Appliances & TV's

within a 15 mile radius (excluding installation on Gas & Built-in Appliances)

Sound Advice & Peace of Mind

4-8 High Street, Edlesborough, Dunstable, Beds LU6 2HS

Tel: 01525 220208 Fax: 01525 222802

www.janesltd.co.uk

GALRAL SERVICES

AUTOMOTIVE, AGRICULTURAL & PLANT MAINTENANCE

Modern, classic and vintage vehicles; servicing & restoration

Over 40 year's local experience in automotive industry

Agent for BEPCO tractor parts.

Agent for TRS restraint systems (ratchet straps)

Welding & fabrication services (sheet steel & aluminium)

Auto electrical and engineering works

Contact Simon

07785 278188

Fax/answer machine

01525 210597

GATES

Plumbing & Heating Limited

We'll help meet your heating needs

- Biomass boilers
- Air source heat pumps
- LPG central heating
- Oil and Gas central heating

Please contact us on:

01296 670445

info@gatesheating.co.uk

www.gatesheating.co.uk



We are Gas Safe, OFTEC, NAPIT
and MCS registered

Government funding for renewables

Simples Fitness

Fitness classes & individual fitness training

- * Circuit Training
- * Cardio Blast
- * Crazy Abs
- * Buggy Push
- * Box-Fit
- * Ski-Fit

Membership £35 per month or Pay as you go

Forget the gym...make fitness simples!

www.simplesfitness.com

MINI DIGGER WITH DRIVER FOR HIRE

Fully insured ↔ Competitive rates ↔ Based locally
Aggregates Supplied ↔ ↔ ↔ Tree Stump Removal

Contact Simon

07785 278188

Fax/answer machine 01525 210597



Electrical Services

www.rselectricalservices.com



**FULLY QUALIFIED
ELECTRICAL ENGINEER**

CPS Registered through NICEIC Scheme

Competitive prices and quality service

Available for all your domestic and
commercial electrical requirements

No job too small

Call Russell Sears:

07578 008567

01525 220008

17 Good Intent, Edlesborough



Your Latest EB Lions News...

Celebrating some great end of season achievements

As we approach the last few weeks of the season, we have some exciting cup and league games to play out. We are incredibly proud of all our teams achievements and in true EB Lions style will be wholeheartedly supporting those reaching league, cup and fair play finals. This seasons successes are testament to the dedication of our fantastic coaches and assistants and to the support of our players parents and families.

A warm welcome for new local players

We are often able to accommodate new players and operate a training / waiting list system for those wishing to join our teams. Whilst this season is drawing to a close, there are plenty of local tournaments throughout the summer many of our team take part in and training continues up till our awards day in June. **We are especially keen to recruit new players at U8 and U9 age group, both boys and girls.**

Visit our website eblions.co.uk to find out more about the club, our training and playing ethos and football development programme. If you like what you see, just email enquiries@eblions.co.uk with your details and our football development team will be in touch.

Be a part of the club's future

Celebrating our 20th season this year, with over 300 players and 28 teams, we are a growing club. It takes work behind the scenes to support the great work our coaches do, so we are actively looking to add new recruits to the committee and to support the coaches with administration.

If you like a challenge and want to help shape the next generation's enjoyment of local youth football, we would love to hear from you.

We are also starting to look for new team sponsors for next season, so if you know of or work for a company that can help by supporting our young players, we have a range of sponsorship options available, so do get in touch committee@eblions.co.uk.

✉ Your EB Lions Committee

WELCOME TO EB LIONS AFC

Your local village football club offering training and matches for boys and girls from U5 to U18 years.

An FA Charter Community club, with 28 teams and over 300 players proudly celebrating our 20th season this year.



Young players wanted...

to join our successful children's football club, based within Eaton Bray, Edlesborough and the surrounding villages.

We welcome any new player, especially from the villages we serve, to train and play locally.

We are specifically recruiting;
U8 Boys & Girls (Current school year 3)
U9 Boys & Girls (Current school year 4)
U10 Girls (Current school years 4 & 5)
U12 Girls (Current school years 6 & 7)
U14 Girls (Current school years 8 & 9)
New coaches and assistant coaches

Find out more about the club

www.eblions.co.uk

Email:

footballdevelopment@eblions.co.uk

www.eblions.co.uk

Follow us @EBLions

Find us on Facebook

Respect

A Charter Standard Community Club



Edlesbray Leisure Fellowship (ELF)

Hello Everyone,

We hope that you all enjoyed the Easter Break and any festivities you may have had.

As I write this report, the weather is really nice and has brought to life so many beautiful plants that have been hidden for some time, bulbs of all different colours, blossoms on trees and catkins. Perhaps Spring has arrived.

The walk on March 23rd was taken on a sunny morning and the group decided that they would do a circular walk on good surfaces, taking into account the recent bad weather. Starting at Cholesbury Village Hall, they walked Northwards through woods, to join Shire Lane, then continued towards Hastoe. Turning South West, they headed back towards the start via Buckland Common. Brian W. led the group and the

distance was approximately 4 $\frac{3}{4}$ miles.

Wednesday March 25th saw a group visit the R.A.F. Battle of Britain Museum at Bentley Priory, Stanmore. The group enjoyed the visit and found this New Museum, housed in the old Fighter Command Wartime Headquarters Building, very interesting. The visit began with an informative talk by a member of the Museum Staff. Morning coffee and lunch breaks were taken in the Museum's café. Alan arranged this visit and thanks go to him.

A welcome awaits for any person who would like to join the E.L.F. group in any of their activities.

MAY DATES

Thurs 14th. Visit to Audley End House

Mon 25th. Walk from Eaton Bray Church
9.30 a.m.

Give Bowls a Go!

Open sessions for you

Every Tuesday at 2pm

Every Friday at 6pm

May to September

CHEDDINGTON BOWLS CLUB, your friendly local Club, is for everybody – all ages: beginners to experts.

Our Open sessions are an ideal opportunity to get to know bowls and refine your skills. Come with trainers or flat soled shoes. We will supply the rest.

Cheddington Bowls Club, The Recreation Ground, High Street,

Contacts: Nigel on 01442 824 679 or Sue on 01296 668 772



Sponsored by www.wisechoicewills.co.uk • 01525 220644

fitness 4 fun

Get those muscles working! Tone and strengthen arms, legs, bums and tums – you'll look and feel great.

Why not give it a go? Only £5 per week for one hour of fun fitness. Pay-as-you-go, come when you can.

Come along and join our friendly group. Everyone welcome.

No need to book – just show up.

What: Fitness4Fun with Kay
Where: Edlesborough Memorial Hall
When: Every Friday, 10:00-11:00 am



WHIPSNADE PARK GOLF CLUB STUDHAM LANE, DAGNALL, HERTS HP41RW

**JOIN OUR MIXED FRIENDLY CLUB FROM £375
YOU ARE INVITED TO ATTEND OUR NEW MEMBER
RECRUITMENT DAY**

SUNDAY 17th MAY 2015

PLAY OUR BEAUTIFUL FLAT COURSE FOR £5.00

ITINERARY

1pm - 2pm FREE GOLF BALLS ON THE RANGE TO WARM UP

2pm - 2 30pm FORMAL WELCOME

2 30pm ONWARDS PLAY 9 HOLES

A FREE DRINK IN THE BAR AFTERWARDS WITH FREE

DRAW AT 5:30pm TO WIN 4 BALL ROUND OF GOLF

**MEN AND LADY MEMBERS WILL BE THERE TO GUIDE YOU
ROUND THE COURSE**

PLEASE PHONE THE PRO SHOP ON 01442 842310 TO BOOK

Edlesborough W.I.

Edlesborough WI held a nostalgic evening when guest speaker,

Sheila Parker, spoke on her subject, 'From Tiller Girl to Vernon Girl'. As an introduction Sheila opened her talk by testing the audience whether they remembered the 'Oh Boy Show' with its signature song, the 'Six Five Special'. In response, the audience sang spontaneously and with gusto the entire song and so began a very lively and happy evening; bringing back many fond memories of the members' past youth.

Sheila's show business career started when she was eleven years old and was living in her home town of Liverpool. With her mum, dad and two brothers the family went to the theatre to watch a pantomime starring Dickie Valentine and from the moment Sheila saw the dancers she knew, without any doubt, that she wanted to become one. The dancing class took place every Friday in a church hall at a cost of two shillings and sixpence; not a small sum in those days and so began a journey of dancing lessons and talent shows. There was also a 'deal' with the church, which involved attending weekly Sunday services, participating annually as the Angel Gabriel in the nativity play and attending the Youth Club on Mondays. Alongside Sheila in the nativity plays were two brothers, who lived close by and regularly performed as shepherds. Their names, the reader might be interested to know, were Paul and Michael McCartney. The vicar, realising Sheila had talent, told her she should have her voice trained. So, at the age of thirteen, Sheila travelled across Liverpool to be auditioned by Mr. Robert. Sheila passed the audition which meant her voice would be trained, she would learn to play the piano and have singing lessons, all of which came to the grand sum of ten shillings per week, which her family was unable to afford. A guardian angel was looking after Sheila in the form of her

dancing teacher she had had since the age of eleven. She paid for Sheila's lessons for the next five years. In return for that wonderful kindness Sheila became the dance teacher's 'Sue Brett' which meant Sheila was the girl in the front of all the dance routines.

At that time the school leaving age was fifteen years. Sheila left school just before her fifteenth birthday. She had been looking at the job vacancies in the 'Stage' newspaper, when one such vacancy caught her eye. The position was for a Tiller Girl, whose height had to be between 5 feet 4 inches and 5 feet 6 inches, to appear in pantomime. The audition was to be at the famous Windmill Theatre in London. Sheila auditioned and passed. The job was for four and a half months at the New Theatre, Oxford. Sheila's mother allowed her daughter to go, although she was not yet fifteen. There was no need to worry. One of the Tiller Girls was also head girl and was responsible for the girls' welfare. The 'digs' otherwise known as board and lodgings, were checked to make sure they were suitable and included bed and breakfast. The performances consisted of three shows on Wednesdays and three shows on Saturdays. The pantomime was Aladdin and starred Jimmy Clithero. There were eighteen Tiller Girls in the pantomime, their basic outfits comprised of black fishnet tights, tap shoes but without the taps and white blouses with dicky bows. They did in fact look like penguins. The top hat headdresses were kept in place with chin straps and the girls were fined if their headdress came off.

Sheila informed the WI audience the Tiller Girls were originally formed by John Tiller in 1886, who lived near Blackpool. The dance troupe was for young ladies who wished to perform. The Tiller Girls were famous for their kicking routines. However, the kick was not allowed to be higher than the dancers' shoulders. Sheila also explained how the girls had to work for

their Equity card. They had to work two years in the provinces before being granted their card. The wages were £6 and 10 shillings (£6.50) of which £1 and 10 shillings went to her mother and £3 and 10 shillings paid for the digs. The remaining money was the amount Sheila had to live on.

This part of Sheila's life took place during the second half of the 1950's. What an enjoyable time the WI members had reminiscing along with Sheila about the fashion of those days, such as the lime green petticoats, which were soaked in sugar in order to make the netting more stiff and if that failed how the girls would wear hooped petticoats; not an easy garment to wear, particularly when having to negotiate with a chair in order to sit down. Not only did the ladies speak fondly of their fashion but they included the boys' fondness for the D.A. hair style. All the ladies laughed in answer to Sheila's question, "Do you know what D.A. stands for?" Yes indeed they did. Fond memories also surfaced when 'Evening in Paris' perfume was discussed along with block mascara, which had to be spat into in order to make the correct consistency. Those were the days!

By now Sheila was sixteen and looking through the Liverpool Echo to see if there were any jobs for dancers and indeed there was a job. A troupe of girl dancers was being formed but there was a certain stipulation. The girls had to have originated from Liverpool. The dancers were sponsored by the Vernon Football Pools and the girls were to be known as the Vernon Girls. This was an opportunity Sheila could not afford to miss. She applied for and passed the audition and was a Vernon Girl for the following five years. Sheila was only sixteen and working in London with famous stars. It was indeed a dream job. The Vernon Girls were paid a set weekly wage plus expenses by the Vernon Pools, a very large company at that time. There were eighteen girls who had their own musical director, choreographer and chaperone. Miss Finnigan was the chaperone and the girls had

to be back at their hotel by 11.30 pm. The girls were also given an allowance to cover their food, hairdressing and clothes. They were paid to look pristine the whole time by Vernon Pools because the dancers were representing that firm. During that period, a new television programme appeared which revolutionised the way young people's programmes were developed. The programme was called, 'Oh Boy' and its theme tune, 'The Six Five Special' became very famous with the programme going out live with the Vernon Girls as the backing singers /dancers to famous singers such as: Cliff Richard, Marty Wilde, Dickie Pride, Johnny Cash, Gene Vincent and Billy Fury to name but a few. The Vernon Girls became synonymous with their outfits which consisted of tight T-shirts and shorts.

The height of Sheila's career with the Vernon Girls came in 1960 when she appeared with the dancers in the first televised production of the Royal Command Performance from the Victoria Palace. The theme of the programme was 'Youth' and the stars included: Lonnie Donegan, Adam Faith, the John Barry Seven, Cliff Richard, Bruce Forsyth, Billy Cotton, Millicent Martin, Nat King Cole, Sammy Davis Jr. and Liberace. The finale consisted of The Crazy Gang singing with all the performers, dressed in black and white (top hat and tails) with a hand on the shoulder of the person next to them, 'Just Strolling' followed by Vera Lynn singing, 'We'll Meet Again' before the cast turned to face Her Majesty to sing the National Anthem. After the show H.R.H. the Duke of Edinburgh joked that Moss Bros would be busy the next day with all the suits being returned.

Throughout Sheila's talk there was space for laughter, reminiscences and singing, which goes to show the younger generation that we were young once and still remain young at heart.

✍ Jackie Flint

Dagnall Weather Station (AONB)

Weather Conditions for March 2015



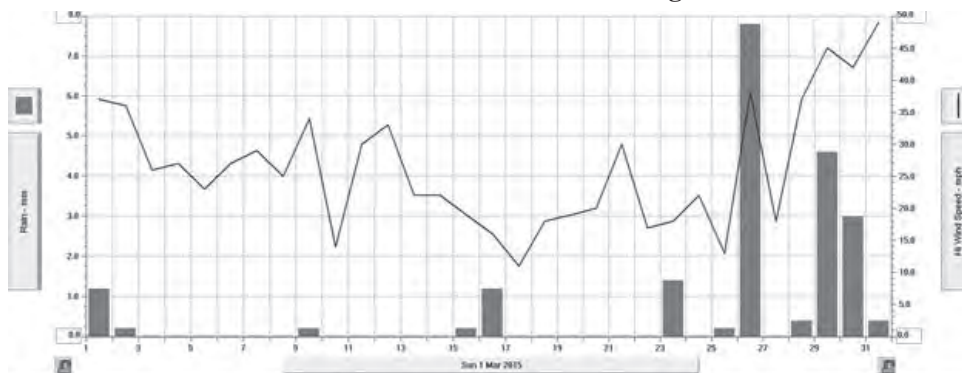
Elevation: 450 ft - Latitude: 51° 50' 13" North - Longitude: 0° 33' 34" West

For the majority of March it was a stable period of weather with cloudy days with odd clear sunny moments, rather boring. But there were some notable events, The lack of rain by the 22nd we had only 0.3mm = 1/32 inch real drought conditions and then only 20.80mm for the whole of the month most of it in the last 5 days. As the rains came the wind picked up and we had storm conditions, on the 31st March at 01.59 the gusts peaked at 49mph this relates to 9 on the "Beaufort Scale" classed as "Strong gales" with possible damage to buildings.

On the 20th there was a partial eclipse but for us it was mainly cloudy but I did measure the temperature dropping by 2°C during the event it would have been much greater if we had full sun.

	High	Date/Time	Low	Date/Time
Temperature:	15.8°C	7 March 14.30	- 1.6°C	25 March 04.00
Mean Temperature	6.6°C			
Dewpoint:	10.6°C	28 March 15.30	- 3.8°C	12 March 16.30
Humidity:	96%	10-18-28 March	32%	12 March 16.30
Barometer:	1038.9 mb	5 March 09.00	991.9 mb	29 March 13.30
Wind Speed	49 mph NW	31 March 02.00	Months avg.	7.4 mph
Wind Chill:	14.6°C	20 March 15.00	-3.2°C	25 March 23.00
Dominant Wind:	W			
Rainfall *T= total rain days and moisture. R= Actual rain				
*Rain Days: 12(T), 10(R)	Wettest Day 26 March		7.80 mm	0.307 ins
Monthly Rain:	Total	March 2015	20.80 mm	0.819 ins
Yearly Rain:	Total	1 Month	151.10 mm	5.948 ins

Chart shows the lack of rain and the high winds



For weather data 24 hours a day, updated every 15 mins, visit: www.dagnallweather.co.uk and http://bit.ly/weather_dagnall this site forecast and much more. If anyone has a question, comment or wishes to contact me please email: david@dagnallweather.co.uk or telephone: 01442 843883. Dagnall weather now has an app for your ipad & iphone! Just go to the apple store, search for Wunderstation and follow the instructions to Dagnall Weather Station. Now updated every minute.



Edlesborough Book Group

The Old Wives' Tale by Arnold Bennett



Arnold Bennett, is one of those authors that somehow get passed over in favour of more well known Victorian novelists. This is a shame and we are grateful to one of our very well read members for suggesting that we read one of his novels. We chose *The Old Wives' Tale* as it appeared to be his most well known work. At first glance the book is quite daunting, printed in very small type and covering very many flimsy pages. Once the story starts, however, it draws in the reader very quickly and as the characters' lives start unfolding, the book holds one's attention until the end.

At the beginning of the book we are introduced to the Baines family, who live in the small town of Bursley at the centre of the Potteries. Mr Baines is a well respected citizen and churchgoer, who runs a drapery business in the town's centre. His two daughters, Constance and Sophia are young teenagers just starting out in life and very influenced by their parents' high principles and Christian moral values. They are expected to join their parents in the shop and to learn about the business, Constance who is the elder and the quieter of the two sisters accepts her role, but Sophia is impulsive and headstrong and feels constrained by the narrowness of her existence. Sophia's head is turned by a young travelling salesman who visits the shop and inevitably, to her family's horror, she elopes with him travelling to Paris and living there.

The book then tells Constance and Sophia's stories separately and the two lives contrast a great deal, covering the period between 1860 until the early twentieth century. Constance is very much the dutiful daughter working in the

business and supporting her now widowed mother. She marries Samuel Povey, one of the shop assistants and lives an uneventful, but contented life with him.

Sophia however, has a life full of incident and near disasters. But somehow she survives and makes a life for herself, overcoming many difficulties and proving that her father's principles of thrift and hard work have true value.

This is a brilliant book, well written in elegant prose, with the story moving along really well, making the reader anxious to know what will happen to the characters. All the members of the group who read the book, enjoyed it very much and we said that we would fish out the unread Arnold Bennett books from our bookcases and read more of his work.

Arnold Bennett, was born in 1867 in Hanley. After leaving college in London, he worked for a while in journalism, becoming at one time, editor of *Woman* magazine. Most of his life however was devoted to writing about the fictional five towns, based on the real pottery towns that he knew so well. He was undervalued in his lifetime by the literati of the time, but judging by the book we have just read, he deserves wider recognition.

St Mary's 100 Club

Congratulations to the following winners:

April 2015

1st Prize – John Plater

2nd Prize – Tanya Watkin

3rd Prize – Peter Hale

If you would like to join the 100 Club please collect a form from www.stmaryseatonbray.org.uk/Groups/100-club or from St Mary's Church, Eaton Bray.

Salvation Sound



British Summertime began on March 29th so says my calendar, but other journals say that it is to be May Day; some even say that June 1st heralds summer - it is a puzzlement. When the world began, the birds had to learn how to look after themselves. The first lesson was how to make a nest. Most of the birds were there, but the jackdaw spent all day flying around looking for treasures, when nightfall approached she had nowhere to sleep. "Help!" she called to the other birds. "What do I do?" "You need a twig, and you place it on a branch, like this." "Oh, I know all about that" said the Jackdaw impatiently. "Then get more twigs, balance them and carefully weave them together." "I know that already." "Then strengthen the nest with mud from the river bank, and line it with feathers I'd make it soft and warm." Yet again the Jackdaw said "I know, I know." In the end the other birds got tired of trying to help the disagreeable bird and flew off. To this day her nest is an untidy bundle of sticks – because she was too conceited to listen to the good advice of others.

May Mottoes: "Cast not a clout till May be out." (Is that the May flower, or the month, I wonder.) "Who doffs his coat on a winter's day, will gladly put it on in May." "Shear your sheep in May, and shear them all away." "A cold May and windy, a full barn will find ye." "Be it weal or be it woe, beans blow before May doth go."

In days gone by people went out at early dawn "A-Maying" to welcome the advent of spring; now I'm not sure where about the year I am!!

In the book 'The Brothers Karamazov', Dostoyevsky wrote this striking passage:

"Love all God's creation, the whole and every grain of sand in it. Love every leaf, every ray of God's light. Love the animals, love the plants, love everything. If you love everything, you will perceive the divine mystery in things."

"A swarm of bees in May, is worth a load of hay." "Water in May, brings bread through all the year."

Helena Isabella Tupper wrote:

"For beauty in this world of ours,
for verdant grass and lovely flowers
for song of birds, for hum of bees,
for refreshing summer breeze,
for hill and plain, for streams and wood,
for the great ocean's mighty flood,
for everything give thanks."

So I say, what does it matter -

O God our creator, your kindness has brought us the gift of another new day, helps us to leave yesterday, not to cover tomorrow, but to accept the uniqueness of today.



✍️ Maureen

The Salvation Army, Booth Place, Eaton Bray Weekly Activities



Sunday

Footprints (Sunday School) 9.45-10.45am
Morning Worship 11am
Songs of Praise 4pm
(3rd Sunday of the month from May to Dec)

Tuesday

Coffee Morning
(alternate weeks) 10-11.30am
Music practices (all welcome) 7.30-9pm

Wednesday

Home League 2.30-3.30pm
(Ladies Mtg but all welcome)
Champions Challenge Club (term time)
(Ages 5-10 years) 5.45-6.45pm

Thursday

Parent and Toddler Group
(Term time) 9.30-11.30am
Haberdashers' night
2nd Thursday of month 7.45 pm
Ladies Fellowship
(Last week of month) 7.45pm

For further details please call Envoy Hilary
01525 222087 / 07932 057490

E: hilary.chadwick@salvationarmy.org.uk
W: www.salvationarmy.org.uk/eatonbray



Premier Garage Doors & Gates



Quality Garage Doors

- ✓ Superb choice of designs in metal, wood and fibreglass
- ✓ Any size door made to your requirements
- ✓ Large selection of spares & fast repair service available
- ✓ New or existing doors converted to automatic
- ✓ Professionally fitted by own expert craftsmen
- ✓ Prompt free estimates & advice
- ✓ We cover all areas



(EST 1984)

DIY kits available
Insurance work welcome
Council approved
Remote control gates also available



Unit 7, Sparrow Hall Farm, Leighton Road, Edlesborough LU6 2ES

01525 220212

www.premiergaragedoors.co.uk

THE APPLIANCE & FLOORING STORE @janes



BOSCH

APPLIANCES & TV'S

**SAME DAY
DELIVERY &
INSTALLATION
ON STOCK ITEMS**

**WE WILL BE
COMPETITIVE
ON PRICE**

**REPAIRS & SERVICE
AVAILABLE**



 **Hotpoint**



 **Indesit**

SIEMENS

FLOORING

Borrow our flooring samples

We measure and quote

We uplift & dispose old flooring

We have short lead times

We will look after you



**Karndean
Designflooring**



**BROCKWAY
KIDDERMINSTER**

01525 220208

**Vacuum - Lawn Mower & Bike
Repairs & Service Available**

4-6 High Street Edlesborough LU6 2HS