

# **FOCUS**



**April 2015**

**The local village magazine just for Us!  
Eaton Bray, Edlesborough, Northall & Dagnall**

*The White Horse Inn  
At Eaton Bray*



Market Square  
Eaton Bray  
Beds  
LU6 2DG  
01525 220 231  
[www.thewhitehorseeatonbray.co.uk](http://www.thewhitehorseeatonbray.co.uk)

Come along to

# **BRAYFEST**

Eaton Bray's festival of beer, Wine  
and accompanying food!

**FRIDAY 1<sup>ST</sup> MAY TO MONDAY 4<sup>TH</sup> MAY**

**10 real ales**

**Worldwide wines**

**sausages and cheeses**

**from around the world**

**plus great entertainment all weekend**

*more details soon*

# Focus Magazine Committee

**Joint Editor:** George Crutcher

7 Summerleys, Edlesborough 221637

**Email:** [george.crutcher@tiscali.co.uk](mailto:george.crutcher@tiscali.co.uk)

**Joint Editor:** Sally Siddons

34 Wallace Drive, Eaton Bray 221733

**Email:** [sallysid@hotmail.com](mailto:sallysid@hotmail.com)

**Dagnall Representative:** Sue Cawdell

10 Deans Meadow, Dagnall 01442 842200

**Circulation Manager:** John Plater

41 Church Lane, Eaton Bray 221095

**Treasurer/Leaflet Enquiries:** Ken Coates

10 The Nurseries, Eaton Bray 220868

**Advertising:** Sally Siddons

34 Wallace Drive, Eaton Bray 221733

**Design and Layout:** Tracey Moren

(Moren Associates Limited) 01525 229695

**Printed by:** Priors Press

Dunstable 01582 699851

Copy for publication to the Editors or one of the following by the **10th of the month:**

Kevin Cabbage

'Larums', Eaton Bray Road, Northall

Val Barrow

3 Chestnut Close, Dagnall

*Focus accepts no responsibility as to the accuracy or content of any advertising or articles published in 'this' magazine neither do they reflect the opinion of members of the Committee.*

© Articles published in Focus may not be reproduced without permission.

**Focus would like to remind contributors that the deadline for articles is the 10th of the preceding month.**

## Kindly Note

If the event you wish to advertise falls in the first week of the month, it is advisable to get the details into Focus a month earlier. The magazines are not delivered from the printers until the first of the month, therefore it takes a few days for them all to be circulated throughout the village.

✉ Editors

## Village Hall Bookings

To book your local village hall for an event please contact the following:

**Northall:** Lorna Cabbage Tel: 01525 220361

**Eaton Bray:** Norman Lee Tel: 01525 222831

**Dagnall:** Elizabeth Coates Tel: 01442 842550

**Edlesborough Memorial Hall:** Penny Pataky, Tel: 01525 229358

## Police Contact Numbers...

*making neighbourhoods safer together*

**General Assistance (Recommended Number): 101    Emergency: 999**

**Bedfordshire Police (Eaton Bray)**

Leighton Buzzard Police Station/Kathryn Horgan: 01582 473418

Typetalk: 18001 01582 473418

Email: [LPT.LeightonRural@bedfordshire.pnn.police.uk](mailto:LPT.LeightonRural@bedfordshire.pnn.police.uk)

**Thames Valley Police (Edlesborough, Dagnall & Northall)**

PCSO Jackie Dodson Mobile: 07800 703 524

Email: [NHPT@thamesvalley.pnn.police.uk](mailto:NHPT@thamesvalley.pnn.police.uk)

# Village Diary April 2015



## Weekly

- Mon-Fri (term time) Eaton Bray Pre-school, Eaton Bray Lower School, 01525 220468
- Mon-Fri (term time) Dagnall Under 5's, Dagnall Village Hall, 9.15am - 12.15pm, Mrs Ann Tobin 07816 358342
- Mon-Fri (term time) Edlesborough Pre-School, Edlesborough School, 01525 220431  
manager@edlesborough.bucks.sch.uk
- Mon-Thu (term time) Totternhoe Pre-school, mornings, Totternhoe Lower School, Michelle Urbanowicz on 01582 668841
- Mondays Pilates, 10.45am, St.Giles Church Hall, Totternhoe, Lisa: 07799 893489
- Mondays (term time) 2nd Eaton Bray Brownies, girls 7-10 years, Edlesborough Memorial Hall, 6 - 7.30pm,  
Contact Sandra Counsell 07979 521900
- Mondays Dagnall Community Choir, All Saints Church 7.45 – 9.45pm
- Mondays Weight Watchers, 7pm, Eaton Bray Village Hall
- Mondays (term time) Movement and exercise classes with a dance flavour, Northall Village hall 2-3.30.  
Contact Jan 01442 864271.
- Mondays Curtain Call Youth Theatre 5-7.30pm, Eaton Bray Village Hall, Gavyn 01525 220525
- Mondays Curtain Call Theatre Group - 7:30-10:30pm Eaton Bray Village Hall, Sheila -  
sdtwinkletoes@yahoo.co.uk
- Mondays KFFA ISTD Classical Ballet classes, 3+yrs, 4.15pm, Edlesbrough Memorial Hall,  
www.kfpa.co.uk
- Tuesdays Line Dancing, 1.30-3p.m., Eaton Bray Village Hall, Lyn Stubbs 220731
- Tuesdays Pilates, 10-11am, Eaton Bray Village Hall, Nicky Roussou 07861 162680
- Tuesdays Totternhoe Baby & Toddler Group, 9.30-11.30am, St. Giles Church Hall, Ruth Allen,  
01525 222468 or 07796 265174 or email ruthallen002@gmail.com
- Tuesdays Northall Baby & Toddler Group, 9:30-11:30am, (open in the Summer School Holidays)  
Northall Village Hall, Stacey Richmond 01525 222999/07957 607592
- Tuesdays Tap & Ballet Classes, JoAnn Latus School of Dance, 4-8pm, Eaton Bray Village Hall,  
01582 620576
- Tuesdays Circuit Training - Edlesborough School Hall, 7-8pm - www.simplesfitness.com
- Tuesdays Coffee Morning, Bring & Buy, Table Top Sale, 10-12noon, Salvation Army Hall,  
Booth Place, Eaton Bray
- Fortnightly Cheeky Monkeys Under 5's playtime, 1pm - 2.45pm, Eaton Bray Village Hall, contact  
Rachel on 07789 760007
- Weds (term time) Pilates, 7.15pm, Northall Village Hall, Lisa: 07799 893489
- Wednesdays Egyptian Dance Class, 7.30-8.45pm at Eaton Bray Village Hall. Contact: Soraya on  
07976 964316 for more details
- Wednesdays Northall & District Age Concern Wednesday Club, 10am - 3pm, Northall Village Hall,  
Contact Anna on 07854 230243
- Wednesdays Dynamic Yoga 6.30-7.30pm £5 Eaton Bray Coffee Tavern Keira 07936 693696
- Thursdays Yoga, Northall Village Hall, 11.30am-1pm 01525 377542
- Thursdays Baby & Toddler Group, Salvation Army Hall, Booth Place, Eaton Bray, 9.30-11.30am
- Thursdays Keep Fit, Edlesborough School, 8pm Tel: 01582 668735
- Thursdays Jazzercise, 9.30-10.30am, Eaton Bray Village Hall, Angela Veryard, 01525 715208
- Thursdays KFFA Street dance classes 4+yrs 4pm, Edlesborough Memorial Hall, www.kfpa.co.uk
- Thursdays Central Bedfordshire Children's Centres' Toy Library, 9-9.45am, Eaton Bray (School  
Lane) Public Car Park
- Fortnightly Keep Fit class, Edlesborough Mermorial Hall 10 - 11am
- Fridays Tap & Ballet Classes, JoAnn Latus School of Dance, 4-8pm, Eaton Bray Village Hall,  
01582 620576
- Fridays "Little Luvvies" baby ballet classes 10am-11.30am. Contact Emma Whittemore on  
01525 376124

# Village Diary April 2015



Fridays (term time)	Kids Club 6:00pm to 7:00pm Grace Baptist Church, Edlesborough (across from the post office)
Fridays	Crazy Abs abdominal workout - 6-6:30pm, Edlesborough Memorial Hall - <a href="http://www.simplesfitness.com">www.simplesfitness.com</a>
Saturdays	Jazzercise, 9.30-10.30am, Eaton Bray Village Hall, Angela Veryard, 01525 715208
Saturdays	Drama Class for Children, 10.35am-12.35pm, Eaton Bray Village Hall, Claire Casey, 07792 508591
Saturdays	KFPA Musical Theatre classes 4+yrs <a href="http://www.kfpa.co.uk">www.kfpa.co.uk</a> , 10am, Edlesborough Memorial Hall
Sundays	Sundays Worship at 11:00am and 6:30 pm Grace Baptist Church, Edlesborough (across from the post office) Barry 01525 229610 or Peter 01525 221048

## Monthly

1st Monday	Eaton Bray Parish Council Meeting, 7.30pm, The Coffee Tavern
1st Monday	Eaton Bray W.I. Meeting, 7.30pm. Eaton Bray Methodist Church Hall. Contact Barbara Collier on 01525 221401
1st & 3rd Tuesday	Dunstable & District Orbit (social and charitable) Club meet at Dunstable Rugby Club at 8pm. For details contact 01525 222441 or 01582 755147
1st Saturday	St. Mary's church, Eaton Bray Coffee Morning & Plant Sale, 10am - 12 noon
1st Sunday	May to September, St Mary's Church, Edlesborough Open Day, 2-5pm
2nd & 4th Tuesday	TOTS, St Mary's, Eaton Bray, 2pm
2nd Tuesday	Dunstable & District Local History Society meeting, 7.45pm, Methodist Church Hall, Dunstable (opposite Wilkinson)
2nd Tuesday	Edlesborough W.I. Meeting, 7.30 pm, Edlesborough Memorial Hall
2nd Wednesday	St.Mary's Ladies Guild, 2pm, St.Mary's, Eaton Bray
2nd Wednesday	Eaton Bray & Edlesborough Lions Club, 7.30pm, The Coffee Tavern
2nd Thursday	CAMEO Coffee, tea & chat, 10am-12noon, Edlesborough Methodist Church
2nd Saturday	Workshops Dynamic Yoga 9.30-11am £10 Eaton Bray Coffee Tavern Keira 07936 693696
3rd Thursday	Edlesborough Parish Council Meeting, 7.30pm, Memorial Hall
3rd Sunday	Lunch club 11.30 to 2.00pm, Eaton Bray Village Hall, Chris Hewitt 222288
Last Saturday	Coffee Morning, 10-12 noon, Edlesborough Methodist Church

## Other Regular Events

5th	Beds Area Narrow Gauge Model Railway Club Meeting, 11.30am-4.30pm, Eaton Bray Village Hall
10th	Leukemia Research Coffee Morning, 2 Dunstable Road, Dagnall 10.30 am. All welcome.
11th	Cafe Community, 11am-1pm, Eaton Bray Methodist Church
21st	Dagnall Over Sixties, Visit to the Green Man in Stanford, for lunch and raffle, followed by a visit to Poplars Garden centre.
27th	ELF walk from Eaton Bray church 9:30am

## One Off/Annual/Irregular Events

16th	ELF Lunch out
17th	Afternoon Tea, 2:30-4:30, Northall Village Hall, Tickets: £4 01525 221576
19th	Carnival Queen draw, 11:15am, Eaton Bray Village Hall, Entry form deadline 12th April
29th	Northall & District Age Concern Wednesday Club Coffee Morning, 10-11:30am, Northall Village Hall
30th	ELF meeting, 10:30am, The Coffee Tavern



**EDaN Community Transport**

**Peter Williams: 01442 842506**

# Village Notices

**FOR SALE**

**Electric recliner/raiser  
armchair**

Free delivery within 4 villages  
Excellent condition

**£50**

**Phone  
01525  
221137**



**FOR SALE**

**Electric Keyboard Acoustic  
Solutions MK 2054**

Complete with stand and  
electric adaptor. 100 Timbres /  
100 rhythms. 8 percussions. 8  
demonstration songs. Rhythm  
programming. Record/play back/  
speakers. 46-level tempo control.  
16-Grade volume adjustable.  
**£23 Tel: 07734 111654**

**FOR SALE**

**Glass topped oblong dining  
room table with antique style  
metal frame and legs plus 6  
matching chairs**

**£95**

**Tel: 01525 220189**

**Trevor Lunnon**

**11 May 1951 - 1 February 2015**

Sheila, Paul and Pete would like to thank friends and neighbours for all the messages and sympathy cards, and also the donations for Parkinson's UK, and Brain Tumour Research. Thank you all.  
Sheila

**Audrey "Annie" Ward**

**13.10.1931 - 04.02.2015**

Geoff, Sarah and Helen would like to thank everyone for their kindness and support after the sad passing of Annie in February.

She was much loved and will be much missed by all she knew.

We have received many many lovely messages of condolence and would like to thank everyone who joined us to remember Annie on the 25th of March at the funeral.

The total raised so far for the British Heart Foundation is £950, and we would like to thank everyone for their generous donations.

Geoff, Sarah and Helen Ward



# The Sea

4<sup>th</sup> July 2015

## St Mary's Village

### Carnival 2015

The Carnival on Edlesborough Green is reportedly the biggest independent carnival in the country; and you are part of it. This year the focus is the SEA.

Think .. Captain Nemo, Sharks, Dolphins, Battle Ships, the waves that crash upon a distant shore carrying silver surfers through tubes to an exciting destination. Be assured it is not just Edlesborough Green!

Oh yes; on July 4th there will be no landlubbers. It is time to ensure that you are thinking about how to dress for the occasion. Ask for a float that your organisation can decorate in the theme of the SEA. Don't be a Lobster, Don't be a SHRIMP!

#### Get Involved !

Here is another reminder for local businesses, schools, youth groups, and organisations that might want to support the Carnival and have their organisation

promoted during this event. Here's how:

- Advertising in the Carnival Programme – delivered to all the households in Dagnall, Eaton Bray, Edlesborough and Northall.
- Advertising in the arena.
- Have a float in the Carnival procession.
- Have a stall at the Carnival.
- Donating a prize for the Grand Draw.
- Donating a prize for the Silent Auction.

All details of Carnival 2015 including how to book a stall, arrange advertising, offer prizes and much more can be found on the Carnival website:

[www.stmarysvillagecarnival.com](http://www.stmarysvillagecarnival.com)

For any specific questions or if you would like to get involved with organisation of the carnival either by helping for a few hours on the day or providing assistance in the months before July contact Gordon Gray on 01525 220136 or through the carnival website.

## Eaton Bray Methodist Church

David Mead led our first service in February , reminding us that God is always there, ready to show us what to do. In contrast to the Old Testament times, when God spoke through his prophets, we know that today, he speaks to us all through His Spirit and we need to ask for his guidance through prayer. Melvyn Corby visited our pulpit on February 8th, with an inspiring sermon on the Transfiguration and reminding us that, following Christ's great sacrifice, we too can be transfigured, ie changed from the people we are into the people we have the potential to be. On the last Sunday in February we joined with other congregations in the circuit for United Morning Worship and were made very welcome by the Methodist Church communities in Leighton Buzzard and Dunstable.

Our Cafe Community on St Valentine's Day was a great success with a large number of customers, animated discussions and a convivial atmosphere.

#### Dates for your Diary:

##### Cafe Community

**Saturday 11 April 2015**, 11am - 1pm. We will be delighted to see you if you come to join us for a cup of tea or coffee and/or a light lunch.

##### An Evening of Music

**Wednesday 13 May 2015**, with **Dunstable U3A Choir** and **The Memory Lane Quintet**, followed by refreshments. Free admission but voluntary donations gratefully received.

##### Annual Garden Fete

**Saturday 7th June 2015** at Chestnut Lodge, Great Billington

## Services at St Mary's Church

**SUNDAYS :**    **8.00am**    HOLY COMMUNION  
                  **10.00am**    PARISH SUNG HOLY COMMUNION

**On Third Sunday of each month:**

**10.00am** – WORSHIP FOR EVERYONE a shorter, less formal service for families. (For anyone wishing to attend a service where Holy Communion is offered, there is a Family Communion at 10.30am at All Saints' Church, Dagnall, where visitors are assured of a warm welcome).

**WEEK-DAYS:**

**Tuesday: 2.00pm**    TOTS (Tots on Tuesdays) (2nd & 4th Tuesdays)

**Wednesday: 10.00am**    Holy Communion

*EVERYONE WELCOME AT THESE SERVICES*

## Dagnall Village Hall Committee

### Annual General Meeting 2015



The Annual General Meeting of the Dagnall Village Hall Management Committee will take place on **Tuesday 19 MAY at 6.30pm** at Dagnall Village Hall.

All residents of Dagnall aged 18 and over are welcome to attend and eligible to vote. The following officers of the committee will be elected:

Chairperson

Secretary

Treasurer

Bookings Officer

Anyone wishing to stand for election to one of the offices may obtain a nomination form from the secretary (telephone 842129). We have a vacancy this year for Secretary; please let a Committee Member know if you can help – about an hour a week and making a difference to our Village.

Village organisations currently represented on the committee are Dagnall Under Fives, Gardeners' Society and Dagnall Over 60's. These organisations are invited to appoint a person to the committee as their representative. Any village clubs, societies (or similar) not currently represented on the committee, such as Dagnall Church and School are

welcome to attend the meeting in order to seek the opportunity to appoint a person to the committee as their representative.

Please do make the effort to attend the AGM – it's your village hall (and recreation ground) and you have an opportunity to have a say in how it is managed.

## London Luton Airport

With an increase in aircraft in the area and in particular when the wind is from the East, we are getting some aircraft flying directly over the village to join the flight path into the airport. If you are disturbed by the traffic flying over the village, there is a complaints hotline number: 01582395382. This is an airport number where you can register your concerns. It is important to do this if we are to reduce these disturbances over our village.

If you need to complain about Heathrow flight noise the number is 0800 344 844. Email: [noise\\_complaints@heathrow.com](mailto:noise_complaints@heathrow.com)





# A Letter from Rev'd Coralie



**Vicar: Coralie McCluskey**  
**The Vicarage, 11 High Street, Eaton Bray - Tel: 01525 220261**  
**Honorary Assistant Priest: Revd John Heffer**  
**Reader: Gordon Gray (220136)**  
**Church Warden: Catherine Hayden (220527)**  
**Email: [admin@stmaryseatonbray.org.uk](mailto:admin@stmaryseatonbray.org.uk)**  
**[www.stmaryseatonbray.org.uk](http://www.stmaryseatonbray.org.uk)**

What's happening in April?

For culture vultures, on April 1st, *All this belongs to you* opens at the Victoria and Albert Museum. The exhibition looks at the role of public institutions in contemporary life and what it means to be responsible for a national collection. The V&A is a great place to visit at any time.

For the sporting, the boat Race is on Saturday 11th and the London Marathon on Sunday 26th.

The third option is to pop along to the O2 where Sting and Paul Simon will be performing on the 15th and 16th. It could be interesting, *they are bringing bags of hits, a polished band and some wry banter.*

What's happening in Eaton Bray, Edlesborough, Northall and Dagnall in April?

On Easter morning Christians in the four villages will join in heart and mind with Christians throughout the world to celebrate the resurrection of Jesus. At St Mary's we have services at 8am and 10am on Easter morning and at 9am in Dagnall. There will be the annual Easter Egg hunt after the 10am service. The Easter card detailing all services in our churches and chapels arrived on your doorstep with the March issue of FOCUS. I hope that you all have a good Easter weekend and that the sun shines on Bank Holiday Monday.

April is a busy and exciting month for the gardener, the weather is warmer with indoor-sown seeds well into growth. Sowing outdoors may be underway but it is important to guard against frost. I really enjoy tidying up straggly plants with some judicious pruning and generally clearing grotty patches. I'm really looking forward to visiting the open gardens once more, I always come away inspired.

Finally the next general election is set for Thursday 7th May. I give grateful thanks as I follow the news across the world that I live in a democracy with freedom to vote for the candidate of my choice.

*Coralie*

# Carnival Queen & Princess

## St Mary's Village Carnival

Would you like to lead the Carnival  
Procession and help open the  
Carnival on Saturday 4<sup>th</sup> July?

**Are you aged between 8 and 12  
years?**

If so you could be the Carnival  
Queen or Princess we are looking  
for.

To take part all you have to do is  
complete and return an entry form  
(details below) and come along to  
Eaton Bray Village Hall on  
**Sunday 19 April at 11.15am**  
when a draw to select the Queen,  
Princess and two Attendants will  
take place.

### **How to Enter**

Please telephone Tania Watkin on  
01582 675610 for an entry form, or  
download a form from the Carnival  
website:

[www.stmarysvillagecarnival.com](http://www.stmarysvillagecarnival.com)

**Entry forms should be returned  
to Tania by 12<sup>th</sup> April**



# UNICORN WINDOWS LTD

“WHERE QUALITY & SERVICE ARE NOT A MYTH”

[www.unicornwindows.co.uk](http://www.unicornwindows.co.uk)

**Tel: 01525 854272**



Unit 3 Youngs Industrial Estate, Stanbridge Road, Leighton Buzzard

**comput@mation**

computer support & services

## Computer Support for Business & Home

### Problem Solving:

- Virus & Spyware Removal
- Internet & Email Assistance
- Fault Diagnostics
- Repairs & Upgrades
- Slow Running PC's

### Sales:

- Desktops, Laptops & Tablets
- Printers & Peripherals
- Software

### Services:

- PC, Mac & Linux Support
- Wired & Wireless Networks
- Data Recovery
- Install & Set-up
- Health Checks

On-site Visits:  
Office Hours & Evenings  
by appointment

For friendly advice call John Wallace: 07968 536068 or 01525 261381  
Email: [john@computamtion.co.uk](mailto:john@computamtion.co.uk)  
Web: [www.computamtion.co.uk](http://www.computamtion.co.uk)

Computamtion Services Ltd - Est.1999 with over 25 years experience  
9a Lower Way, Great Brickhill, Buckinghamshire, MK17 9AG

# Carpet & Upholstery Cleaning

Professional & Local

All work guaranteed - not happy, don't pay

Powerful equipment means drier much  
quicker than other methods

100% Guaranteed no chemicals left in carpet  
when dry therefore will not easily resoil  
& perfectly safe for children & pets

Recommendations account for 90% of my work

Absolutely no hard sell

Telephone Colin for a Free Quote

**DEEP-CLEAN**

**01525 851 811**

[www.deep-cleaners.co.uk](http://www.deep-cleaners.co.uk)

Email: [colin@deep-cleaners.co.uk](mailto:colin@deep-cleaners.co.uk)

## **EDLESBOROUGH SURGERY**

**11 Cow Lane Edlesborough**

**Enquiries - 01525 221630 Appointments - 01525 220333**

**[www.edlesboroughsurgery.co.uk](http://www.edlesboroughsurgery.co.uk)**

**Dr J R Bell, Dr Heather Counsell**

**Dr Tisha Patel**

**Dr Stephanie Johnston, Dr Kirsten Riemer**

Friendly village Practice offering a wide range of health services including coils/implants, minor surgery, travel advice, in house blood tests, on-line appointments and repeat prescription ordering. Four Nurse Practitioners offering acute clinics with same day appointments. Also, midwife, health visitors in attendance. Local District Nurse Service.

Long established training Practice with a rotation of qualified doctors.

## **EDLESBOROUGH PHARMACY**

**01525 223181**

**Pharmacist – Mitul Patel**

Friendly reliable professional service at the pharmacy

All doctors/dentists/veterinary and hospital prescriptions dispensed

Professional advice always available

Herbal/Homeopathic products

Special Orders on request

**Stagecoach Theatre Arts**  
 An hour to sing, an hour to dance, an hour to act... A lifetime to Perform!

Please contact the Principal, Wendy Ashman  
**01442 823181**  
 leightonbuzzard@stagecoach.co.uk  
 www.stagecoach.co.uk/leightonbuzzard  
 www.facebook.com/stagecoachleightonbuzzard



**SING! DANCE! ACT NOW!**



Theatre Arts Schools  
**Stagecoach**



**MMH**  
**Plumbing & Bathrooms**



**City & Guilds**  
 Qualified

- Full Bathrooms Installations inc Design, Supply, Tiling
- All General Plumbing work from : Leaking Showers  
 Dripping Taps • Toilets not flushing • Radiators • Drains

Call Mark for a **FREE** no obligation quote **01525 220994**  
 All work fully insured and guaranteed. **07842 653832**

**Barry Cato**  
**Motor Repairs**

— Est. 1981 —

*Servicing, repairs and MOT's arranged*  
**Workshop at:**  
 r/o Norfolk House Farm, Harling Road  
 Eaton Bray, Dunstable, Beds, LU6 1QY  
**Tel: 01525 221681 (workshop)**  
**07836 650015 (mobile)**

**30 Years Experience**  
**Domestic & Commercial Security**



**Burglar Alarms**  
**Redcare Monitored Systems**  
**Intercoms**  
**CCTV**  
**Access Systems**  
**Locks**



CERTIFICATE NO. NACG/2113

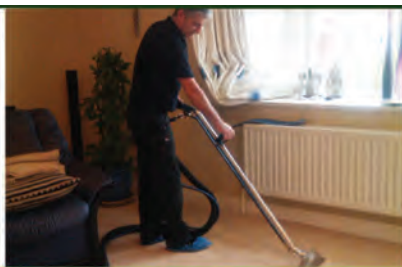
**Quality Installations – Competitive Prices**  
**Insurance Approved** **Free Surveys**

**AAA SECURITY**

**01525 378222**

Email: [sales@aaasecurity.co.uk](mailto:sales@aaasecurity.co.uk)  
[www.aaasecurity.co.uk](http://www.aaasecurity.co.uk)





Local family run business - Not a franchise

All chemicals used are Eco-friendly, non-toxic, non caustic and non allergenic  
**All work guaranteed and fully insured**

All products are Child, Pet and Pregnant Safe

- Ovens & Hobs
- Extractor Hoods
- Microwave Ovens
- Agas
- Fridges
- Carpets
- Rugs
- Upholstery
- BBQs
- Freezers



☎ 01525 22 19 22 or 0800 122 3393

🌐 [www.ecotechovenandcarpetcleaning.co.uk](http://www.ecotechovenandcarpetcleaning.co.uk)

@ [info@ecotechovencleaning.co.uk](mailto:info@ecotechovencleaning.co.uk)

# *Dominic Woolcott*

## Painter & Decorator



- Internal & External
- Plastering & Coving
- Insurance Work
- 20 Years Experience
- Competitive Rates

**For a professional job call:  
01525 229682 or 07747 042879**

# P. DYER ELECTRICAL

For all your Electrical & Testing & Inspection needs

- Re-wires
- Testing & Inspection
- Security Systems/Lighting
- LED & Low Energy Lighting
- Decorative Lighting
- PAT Testing
- Fuse Boards
- Fault Finding/Repairs

Fully insured, Part P registered, all work guaranteed.  
Fast, friendly, reliable, local electrician. For a free,  
no-obligation estimate, call Paul on:



**Tel: 01525 222109**  
**Mobile: 07850 682815**



David John Harris



(Established 1992)

All Fencing Work • All Gates • Paving • Patios  
Driveways • Shingle • Hedge Setting and Cutting  
Grass Cutting • Turfing Specialist • Exterior  
Painting Service • Sheds Small Building Work  
Trees & Shrubs Supplied

**Tel/Fax: 01525 221745**  
**Mobile: 07889 143713**

## WASHING MACHINE REPAIRS

ALSO  
DISHWASHERS, TUMBLE DRIERS,  
AND ELECTRIC COOKERS



Call  
**ANDERSON D.R.S.**

**01582 665764**

[www.andersondrs.co.uk](http://www.andersondrs.co.uk)  
SALES AND RENTALS AVAILABLE



## GYM & TONIC

WANT TO GET FIT, HAVE A  
HEALTHIER LIFESTYLE & IMPROVE  
THE WAY YOU LOOK & FEEL?

The following can be provided in our  
Gym in Edlesborough or in your home

- \* A Health & Fitness Consultation \*
- \* Personal Training \* Massage \*

Ruth Anderson Dip. PT & ST, Member of: Inst of Sports  
Therapists & Register of Nutritional Therapists

**Tel:01525 223074 Mob:07812 163979**



For all your painting & decorating requirements  
 Domestic and Commercial  
 call Max for a free estimate with no obligation  
[maxbro@btinternet.com](mailto:maxbro@btinternet.com)

## Abbott Flooring

- Carpet & Vinyl
- Laminate & wood flooring
- Domestic & commercial
- Supply, fitting & adaption
- Next day delivery
- All work guaranteed
- Free no obligation quotes
- No job to small

We provide a friendly, professional service at very competitive prices. If you require us to supply & fit or you just need some flooring fitted then give us a call.

Telephone 01525 220249  
 Mobile 07958 244536



# High Street Hair

66 High Street , Eaton Bray, Nr Dunstable, Beds. LU6 2DP

**01525 221252**

[www.highstreethair.co.uk](http://www.highstreethair.co.uk)

Monday	Closed
Tuesday	9 - 6
Wednesday	9 - 6
Thursday	9 - 8
Friday	9 - 8
Saturday	9 - 5

A Professional modern salon, Providing  
 Quality hair & nails services for the whole family.



JESSICA



TIGI®



think car, think...

# smartAUTOGROUP



Established locally for over 10 years

Car servicing, M.O.T & repairs  
Bodywork & maintenance  
Mobile car body repairs  
Accident & vandalism damage  
Alloy wheels, scratches, dents, stone chips & scuffs  
Fully equipped bodyshop & workshop  
Complete diagnostic equipment  
Dealer trained master technicians  
Genuine parts



Competitive pricing – up to 50% cheaper than main dealers!

## £10 off with this advert

Work Guaranteed • Free Vehicle Collection & Delivery • Customer Pick-Up & Drop-Off

Call us on **01582 664772** or visit [www.smartautogroup.co.uk](http://www.smartautogroup.co.uk)

Units 17 & 18a, Icknield Way Farm, Tring Road, Eaton Bray, Dunstable LU6 2JX



Bathrooms, Design & Installation

Tiling • Heating • Powerflushing • Taps • Leaks

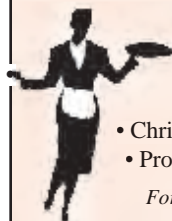
Call Outs • Free Estimates Given



01525 222145



07971 559185



### Patricia's Cuisine

Catering For All Occasions

- Buffets, Dinners •
- Christenings, Weddings, Funerals •
- Promotions & Business Lunches •

*For Enquiries & Menu*

Meadside Farm, 104 High Street,  
Eaton Bray, Bedfordshire, LU6 2DP

**Telephone: 01525 222174**

## P.J.BRINKLOW

### Electrical Contractor

**01525 220469**

**07860 781330**

**43 Pebblemoor  
Edlesborough**

**pinstripes** signs  
**pinstripes** graphics  
**pinstripes** clothing

01525 220485  
07973 167779

**Business CARDS**

[www.pinstripesigns.co.uk](http://www.pinstripesigns.co.uk)

find us on facebook  
pinstripes signs graphics clothing

*Mark Janes Contracts*

**Felt Roofing - All Roofing Repairs  
and Property Maintenance**

*FREE ESTIMATES*



**t: 01442 877528**

**m: 07841 343470**

**e: mark.janes3@btinternet.com**

**Established 25 years**

*Approved Contractor  
for Local Authorities*

*For all your building needs look no further*



**BRIGGS**



**BUILDING & CARPENTRY SERVICES**

Established 1981

For a professional, friendly service call:

**(01525) 221767**

**(07970) 214439**

**Domestic & Commercial**

Extensions  
Renovations  
Conversions  
Alterations

New Builds  
Roof Repairs  
Kitchens  
Bathrooms

Patios  
Driveways  
Decking  
Garden Walls

Mini Digger, Skip Loader and Dumper Hire

**All Work Guaranteed**

**Free Estimates**

# Edlesborough Parish Council News

Including Edlesborough, Dagnall and Northall

## New Pavilion

The planning application for the New Pavilion has now been submitted to AVDC. More information can be found at the website [www.EdthePav.org](http://www.EdthePav.org) or you can contact the Edlesborough Community Sports Club by email [admin@Edthepav.org](mailto:admin@Edthepav.org) or if you wish to talk to a member of the group please find their telephone numbers on the website.



## Edlesborough Green

The Parish Council would like to clarify that Edlesborough Green is for all parishioners to enjoy and ask that everyone is considerate of other users. The rules regarding dogs on the Green has come to the attention of the Council. The byelaws state that "Dogs must be under control". When exercising your dogs on the Green please ensure that you:



- Pick up and dispose of any dog mess in the numerous red dog bins located around the edge of the Green.
- Do not allow your dog to enter the children's play area.
- Encourage your dog to remain close to you and not rush up to other users of the Green.
- Keep your dog on a lead when organised activities such as the Carnival, Car Boot Sale, cricket or football are taking place on the Green to prevent them from interrupting events or play.

## Noticeboards

Due to the high levels of commercial advertising being placed on the Parish Council noticeboards new locks have been installed. Any Parishioner wishing to place

an item on the noticeboards should contact the Parish Clerk (details below)

## District Cllr Chris Poll

During the February EPC meeting District Cllr Chris Poll shared the following information:

- Individually we commit 150.5kg of waste materials to landfill compared to the UK average of 240.8kg which equates to 54% of all our waste being recycled.
- A new service will see the return of bulky waste collection. This 'charged for' scheme will collect up to 3 items for a flat charge of £75. Additional items will incur an extra charge of £5 per item. More information can be found at <http://www.aylesburyvaledc.gov.uk/refuse-and-recycling/bulky-waste-collections>
- AVDC will now charge a fee of £80 for recycling and waste containers to any new property. Additionally any lost or damaged bin will now cost £30 per wheeled bin or £10 per caddy. Each case for replacement will be reviewed by the refuse and recycling team before any charge is levied. If residents require an extra bin (for recyclables only) this will remain at no extra charge. Additional waste bins will not be supplied to existing residents.

## CAN'T TAKE TO THE TIP?

A poster from Aylesbury Vale District Council titled 'CAN'T TAKE TO THE TIP?'. It lists items they collect: 'Old furniture', 'Radiators / heaters', 'TVs / PCs', 'Cookers / fridges', and 'Washing machines'. It shows images of a chair, a radiator, a TV, a cooker, and a washing machine. Below the list, it says 'Up to 3 items - flat fee charged. 8 items max per collection'. At the bottom, it provides contact information: 'Find out more at [www.aylesburyvaledc.gov.uk/bulkyitems](http://www.aylesburyvaledc.gov.uk/bulkyitems) or call our waste team on 01937 515555'.

## Proposed McCann Development

DLP/McCann have forwarded a copy of their Exhibition Feedback Summary to the Parish Council. The document cited the same concerns as the Parish Council's survey:

- The size of the development and overall

number of houses proposed

- Lack of capacity at the local GP surgery
- Lack of capacity at the local school
- A worsening of the existing sewerage and drainage problems
- Additional traffic congestion/parking problems

After the Public Exhibition DLP/McCann stated that they would commission an engineer to investigate the history of and current sewerage problems in Edlesborough. Cllr Wilkinson has met with this engineer and shared extensive information with him regarding the sewerage issues.

At the time of writing this report McCann Homes have yet to submit a formal planning application, but it is anticipated that they will shortly be making an outline application. Based on what they declared at the recent public consultation, it is expected to be for a mixed development of up to 75 houses with a single access from the High Street. If that application is successful, it would then be followed up at a later date by a full application, detailing the final layout of the estate including plans of the different types of houses proposed. The purpose of the outline application is merely to get the principle of developing the site approved. Any site layout details shown in that outline application will be purely indicative and not necessarily representative of the final scheme.

The Parish Council will be consulted by the Local Planning Authority (AVDC) each time an application is submitted. The analysis of the questionnaires completed by parishioners at the public consultation showed that a large majority were opposed to the proposal. The Parish Council will almost certainly reflect that view in their response to AVDC regarding the outline application.

Parishioners must understand however, that

the Parish Council does not have a power of veto. Whilst AVDC will consider the Parish Council's response, their decision will be determined by their interpretation of local and national planning policies, not ours. Recent experience with other similar applications, in particular the one in Cow Lane, suggests that it is more than likely that AVDC will allow the application. That is due to the fact that AVDC do not have an up to date local development plan and are currently unable to demonstrate an adequate 5 year housing supply. Even if we were successful in persuading AVDC to refuse the application, the probability is that the Developer would then appeal to the Planning Inspectorate and that appeal would be successful.

If McCann's outline application is successful, it is the Parish Council's intention to then work with the Developer to optimise the details of the final layout to be included in the full application that will follow. By doing that we would hope to maximise the benefits that the development can bring to the village and minimise the adverse consequences to existing residents. Clearly any development of the site would bring far more negatives than positives to residents of the Parish. However the Parish Council hope that by working with McCann's on the detail layout, if the project gets that far, we can at least mitigate some of our Parishioners concerns.

#### **EDaN Beautification Team**

The team are currently working on a proposal for planting more trees around the edge of Edlesborough Green and on the green area at the top of Cow Lane.

#### **Friends of the Church on the Hill, Edlesborough**

The documents for floodlighting the Church have been submitted to AVDC for planning permission and a notice has been forwarded to the Churches Conservation

Trust.

The next project the team have on their plan is to open the tower to visitors. Approval will be sought from The CCT for this.

### **Traffic Calming – A4146**

In response to of letters from MP John Bercow and County Councillor Avril Davis regarding the reclassification of the A4146, the Parish Council wholeheartedly agreed to support the downgrading of the A4146 to a B road with a weight restriction of 7.5ton. Currently Herts, Beds and Bucks are looking to work together in the hope of achieving this. The opening of the new M1 link road, the de trunking of the A5 and the application to make Totternhoe and Eaton Bray 7.5ton exclusion zones all mean that extra HGV traffic could otherwise be routed onto the A4146.

### **Car Parking In the Parish**

Inconsiderate parking in the Parish continues to be an issue. White lines are painted at particular locations to ensure the safety of our parishioners. Bucks CC have always refused the Parish Council's requests for yellow lines as the lack of traffic wardens in the villages means they cannot be enforced.



The white no parking lines are placed in strategic locations for the following reasons:

- **To remind drivers that parking within 10m of a junction is illegal.**
- **To provide adequate spaces for vehicles to pass each other safely in congested areas, such as by the school**

**and shops.**

- **To ensure pedestrians and drivers have adequate visibility when crossing or pulling out of a junction.**

Please consider others when parking your vehicles and be mindful that inconsiderate parking causes unnecessary hazards particularly to pedestrians.

### **New Councillors**

The Council currently has a vacancy for a new Councillor to represent Edlesborough. Any person wishing to know more about the role should contact the Clerk (details below).

### **Edlesborough Parish Council Meetings**

Edlesborough Parish Council's Annual Parish Meeting will take place in Edlesborough Memorial Hall on Thursday 16th April 2015. There will be a review of the past year's activities together with plans for the coming year. The meeting will commence at 7:30pm and be followed by an Ordinary Parish Council Meeting.

All Parishioners are welcome to attend and may ask questions, raise issues and give suggestions during the Open Forum.

### **Elections & New Councillors**

These will take place on Thursday 7th May 2015. If anyone wishes to be considered for a position on the Parish Council please contact the Clerk before 7th April. Further information about elections has been displayed on the Parish Council noticeboards since 24th March 2015

### **Contact Information**

Clerk to Edlesborough Parish Council:

Clerk: Penny Pataky 01525 229358

Email: [clerk@edlesborough-pc.gov.uk](mailto:clerk@edlesborough-pc.gov.uk)

Website: [www.edlesborough-pc.gov.uk](http://www.edlesborough-pc.gov.uk)

Responsible Finance Officer/Planning to Edlesborough Parish Council:

Lin Sargeant: 01525 220859

Email: [rfo@edlesborough-pc.gov.uk](mailto:rfo@edlesborough-pc.gov.uk)

Facebook: [www.facebook.com/EDANParishCouncil](http://www.facebook.com/EDANParishCouncil)

EDANParishCouncil

# Eaton Bray Parish Council

**Highlights of the Meeting Minutes of Eaton Bray Parish Council  
Held on Monday 2nd February 2015 from 7:30pm at the Coffee Tavern**

## Central Beds Council (CBC)

Website: [www.centralbedfordshire.gov.uk](http://www.centralbedfordshire.gov.uk)

uk - Customer Services: 0300 300 8302

/ Email: [customers@centralbedfordshire.gov.uk](mailto:customers@centralbedfordshire.gov.uk)

gov.uk

- **Motorcycle Track:** The Planning Application was passed with conditions. For full details view the CBC website.
- **CBC Speed Limit Works:** as part of CBC's speed limit works, the installation of a 50mph speed limit buffer is being installed on Tring Road (Wellhead) south of Dunstable. The 50mph speed limit will replace the existing national speed limit leading from Dunstable and terminating by the Harling Road roundabout junction.

## Bedfordshire Police:

REPORTED CRIME – YEAR TO DATE		
RECORDED CRIME		
Crime Type	01/01/14 to 31/01/14	01/01/15 to 31/01/15
Violence against the Person	0	1
Sexual Offences	0	0
Domestic Burglary	0	0
Burglary Other	0	1
Vehicle Crime	0	0
Other Theft	0	0
Criminal Damage	0	0
Drugs	0	0
<b>Total</b>	<b>0</b>	<b>2</b>

ASB INCIDENTS		
Anti-Social Behaviour	01/01/14 to 31/01/14	01/01/15 to 31/01/15
<b>Total</b>	<b>1</b>	<b>4</b>

News from the team: If you wish to contact your Local Policing Team then please call 01582 473411 or email LPT. [LeightonBuzzardLinslade&Rural@bedfordshire.pnn.police.uk](mailto:LeightonBuzzardLinslade&Rural@bedfordshire.pnn.police.uk).

*Non-emergency call 101/All emergencies 999*

## Ban On Hgv Vehicles Over 7.5 Tonnes Through Parish

CBC has approved the plans put forward for restrictions to HGV's through Eaton Bray and Totternhoe. Awaiting confirmation from Bucks County Council for road signage at road entrance points.

## Football Pitches

The Parish Council are in the process of putting together Agreements with EB Lions on their usage and contributions to maintenance costs of the parish recreation grounds/greens.

## Car Parking Issues

It has been brought to the council's attention that a number of cars are being

parked in such a way to obstruct public footpath pedestrian access and opposite road junctions. Please note that it is an offence to park opposite a road junction and to block/obstruct the public footpath at any time.

## Planning Application CB/14/04055/OUT

**Land off Totternhoe Rd, Eaton Bray/Outline Planning for 150**

## Dwellings

The Parish Council objected to the above planning application and sent their recommendations to Vicki Davies, Planning Officer, CBC. To view the council's full response to the application please follow the link:

**[ebpc.co.uk/letters/150109](http://ebpc.co.uk/letters/150109)**

The application has been called in to

committee and the date for this meeting is to be confirmed. The Planning Application received a large number of objections and therefore due to the number of responses CBC has confirmed that they were still accepting letters up to 28th February 2015.

### **Additional Information:**

#### **Elections:**

\**Parish Elections* are to be held on Thursday 7th May 2015, if you wish to stand for Parish Councillor for Eaton Bray Parish Council then please contact the Parish Clerk for a nomination pack; the deadline for nomination papers to be sent to the Acting Returning Officer at Central Beds Council, Chicksands is Thursday 9th April 2015.

\*The *General Election* will take place on Thursday 7th May 2015. To vote in the election you must be on the electoral register. You can register online or by post, for further details go to: <https://www.gov.uk/register-to-vote> .

#### **Neighbourhood Plan:**

The Parish Council is looking into the

option of developing a local plan.

#### **Next Eaton Bray Parish Council Meeting:**

Parish Council Meeting: Monday 13th April 2015 from 7:30pm at The Coffee Tavern (1st floor)

#### **Parish Council Website:**

[www.ebpc.co.uk](http://www.ebpc.co.uk)

For full detailed copy of the minutes for Eaton Bray Parish Council please visit the Parish Council website.

*A hard copy of minutes can also be viewed on the Parish Council's notice board at The Coffee Tavern.*

Follow Eaton Bray Parish Council on Facebook and Twitter

Keep up to date with what is going on in your parish

✉ Heidi Head, Parish Clerk & RFO

Email: [clerk@ebpc.co.uk](mailto:clerk@ebpc.co.uk) - Telephone/Fax:

01525 221464 - Website: [www.ebpc.co.uk](http://www.ebpc.co.uk)

Office Hours: Tuesday/Thursday/Friday 09:30-13:30hrs [messages can be left on answerphone]

## **NORTHALL BAPTIST CHAPEL**

**Chapel Lane, Northall**

(just beyond the 30 speed limit signs on the road towards Leighton Buzzard)

Everyone is welcome to our Sunday worship each week between 11am and 12.30pm including tea/coffee and time to talk together.

For more information contact:

John Hazell 01525 218142

Email [northallchapel@btinternet.com](mailto:northallchapel@btinternet.com)

There has been a Baptist Chapel in Northall for more than 200 years. Today we continue to seek to worship God, serve him in our daily lives and support and encourage one another in the difficult and the joyful times.

**SAVE THE DATE**

**SUNDAY 21st JUNE**

**6.30PM**

**GROVE THEATRE DUNSTABLE**

**Caritas Harmony**

**(formerly Pasque Harmony) the local award winning choir will be singing a varied programme of songs to raise funds for Macmillan Cancer Support**

**Guest artist and compere to be confirmed**

**Tickets £15 available from the box office 01582602080**

# Community Choir

## Stepping Up to Phase 2



As we enter our 6th year our community choir has moved forward into a new phase. With Michelle Garrard, having survived her first year with us, getting into full stride as our Musical Director/Conductor and the highly regarded James Banville as our recently appointed accompanist, we find ourselves in a very strong position to fulfill the musical ambitions of many of our members.

The main recent change is the appointment of a new chairperson. We are delighted that Stephen Holder has taken on this role. Stephen is a long term member and is ideally suited to the position, having a great depth of experience in musical theatre and is a Musical Director and Stage Director of some renown. He can bring

a more "professional" approach to the leadership of our choir. He will also fulfill the role of Concert Director so here again you can expect a far less "Vicar of Dibley" approach. He is also supported by our hard working steering group with dedicated and highly competent members in key roles. Our next concert will be at St. Mary's Church, Redbourn on May 23rd. where you can see for yourselves the results of recent changes.

We are very pleased with how well our highly valued members have coped with the slight change in direction and continue to make Monday night practice sessions at Dagnall Church such a joyful place to be.

## Dagnall Over Sixties

Dagnall Over Sixties had an 'Away Weekend' to Weymouth, and although the weather wasn't forecast to be sunny, it stayed dry and we were able to enjoy the beach walks and the bracing sea air.

We also had a coach outing, a Mystery tour around the area. On our return we had our Bingo afternoon, with tea and Raffle.

Our meeting in April is to the Green Man in Stanford, for lunch and raffle, followed by a visit to Poplars Garden Centre.

In May we have our Ploughmans Lunch in the Village Hall, and hope that some of Kensworth Over Sixties will join us.

Please contact Rosemary 01442843202 if you would like to join us at any meeting.

## Service above Self

The Rotary Club of Dunstable shares an international motto of "Service above Self". The Club members raise money during the year to put into their Benevolent Fund and once a year this money is distributed to good causes and charities local to Dunstable and the surrounding villages.

Each year three Antiques Fairs are held at the Dunstable Leisure Centre where all the profits go into the Benevolent Fund. The next Fair is on Bank Holiday Monday,

4th May 2015 and is open to the public between 10am and 4pm. Admission is a modest £2 per person.

How can you help?

- By having a stall at the event. Please contact Alan Tarsey on 01582 872673
- By attending the event
- By becoming a member of The Rotary Club and helping worthwhile causes in the community.

More information can be obtained from Roger Sharp on 01582 606405





# Your Latest EB Lions News...



With the worst of the cold weather behind us, the league and cup journeys for many of our teams continues apace. We are catching up with matches postponed due to frozen pitches and seeing some fantastic results at all our age groups.

Under the expert coaching of Zoe and Mr B, the U14 girls have already beaten arch rivals Crawley Green to secure a place in the Beds and Herts league cup final to be held on April 18th at Kempston and we expect more teams to follow suit after some outstanding performances over the last few weeks.



## **Our Football Development team going for goal**

March also sees the start of our dedicated goalie training sessions. Organised by our football development team and delivered by Beds FA specialist goalie coaches, our young keepers will have the chance to hone their skills in these structured sessions.

The development team have also been encouraged this season by the number of local teens involved in delivering great football for our young players. We

now have GCSE and Duke of Edinburgh students helping our coaches as assistants in training sessions and at matches, as well as young match officials running the line and qualifying as Level 1 referees. Their dedication and commitment is hugely inspiring.

## **Save the day to celebrate our 20th anniversary in style**

The date has already been set for our end of season awards, **Saturday 6th June 2015**. Always a great day out, we hope this year being our 20th anniversary to make it bigger and better than ever before. If you can help out in organising before the event or on the day please do get in touch.

And finally, our new club website is now live. You'll find all the latest club news, links to all the team fixture lists on Mitoo or FA Full Time, a link to the new store and lots more club info so take a look.

Thanks again for your continued support.

✍️ Your EB Lions Committee



[www.eblions.co.uk](http://www.eblions.co.uk)

Follow us @EBLions

Find us on Facebook

# Respect

A Charter Standard Community Club



# All Saints' Church, Dagnall

## Services in April 2015

Fri. 3rd April 6.00 pm Special Service for Good Friday

### Easter Day

Sun. 5th April 9.00 am Eucharist  
10.30 am Family Service

Sun. 12th April 10.30 am Morning Service

Sun. 19th April 10.30 am Family Communion

Sun. 26th April 10.30 am Family Service with Holy Communion

Sunday School meets each Sunday at 10.30 am except when there is a Family Service.



## Edlesbray Leisure Fellowship (ELF)

Hello Everyone,

As I write this entry for the Focus magazine, the start of spring is in the air. Snowdrops, crocus and miniature iris are at their best. This means that, hopefully, the larger spring bulbs are on the way to brighten our lives.

The group enjoyed, as always, their lunch out at The Bridgewater Arms on March 12th. It was good to be together again.

The walk arranged for March 16th was cancelled but the group met on February 23rd to make a decision regarding what day of the month would be acceptable to the majority of walkers. THIS HAS NOW BEEN CHANGED TO THE 4TH MONDAY IN THE MONTH THE START WILL BE AT 9.30am instead of 10.00am. The start of the walk will still be at Eaton

Bray Church. The new date and start time will commence with the April walk.

We hope that everyone enjoys Easter and we should always remember the reasons why we celebrate this occasion.

By the time this Focus issue is received, the clocks will have been forwarded an hour and there will be more light for us to enjoy during the day.

### April dates

Thursday 16th Lunch out

Monday 27th ELF walk, start 9.30am from Eaton Bray Church

Thursday 30th ELF meet at the Coffee Tavern. 10.30am

### St Mary's 100 Club

Congratulations to the following winners:

#### March 2015

1st Prize – Jean Bates (Ticket 119)

2nd Prize – John Plater (Ticket 82)

3rd Prize – Vic Courtice (Ticket 11)

If you would like to join the 100 Club please collect a form from [www.stmaryseatonbray.org.uk/Groups/100-club](http://www.stmaryseatonbray.org.uk/Groups/100-club) or from St Mary's Church, Eaton Bray.

*Dear Friends and Neighbours,*

*Many thanks for making our Golden Wedding such a special day. All the cards and pressies, all such a wonderful and unexpected surprise, have been very much enjoyed. It was lovely to see so many of you on the day. Special thanks to Edna for our superb cake and all the extra goodies and for "manning the teapot". It all made our day so memorable and such a happy and joyful occasion. Thank you.*

*✍ Sue & John Parker*

# Thinking of Selling or Letting?



Our success is built on our reputation of excellent customer service.



[www.christopherpallet.com](http://www.christopherpallet.com)



Offices in Edlesborough, Wendover & Aylesbury

65 Moor End, Edlesborough, Bucks, LU6 2HN ♦ T 01525 222333 ♦ F 01525 222042 ♦ E [edlesborough@christopherpallet.com](mailto:edlesborough@christopherpallet.com)

## IRON OUT

Complete Laundry Service  
Shirt Service  
Duvet Cleaning  
Ironing

Free collection & delivery from home or office

01582 667332 / 07885 320042

Email: [ironout@aol.com](mailto:ironout@aol.com)

## D NICHOLSON PLUMBING REPAIRS and INSTALLATIONS

NO JOB TOO SMALL

- Emergencies • Free Estimates
- No call out charges



Dave Nicholson

**MOBILE: 07976 975604**

**HOME: 01525 872335**

City & Guilds  
Qualified

## R.J.O'CONNELL BUILDING SERVICES

EXTENSIONS, PATIOS,  
DRIVEWAYS, ROOF REPAIRS  
AND PROFESSIONAL  
DECORATING SERVICE

**TEL: 01296 681323**

**MOB: 07855 236726**

## Will Kimberley Garden Services 01442 255784

Phone for a free no obligation written estimate  
[wkgardenservices@btconnect.com](mailto:wkgardenservices@btconnect.com)

- High hedges a speciality
- Fences erected and repaired
- General garden tidy up's
- In fact any job in the garden!

# Make a Will

AND LASTING POWERS OF ATTORNEY

## Protect Your Home 100%

**YOU DECIDE**, who is to run your affairs, who gets what, guardians etc, not the State.

**MINIMISE RISK** of Inheritance Tax and the disinheritance of children.

### Best Price Guarantee

from specialist Solicitors and professional Will Writers since 1999

FREE HOME VISIT

For a **DAYTIME** or **EVENING** appointment call

# 01525 220644

[www.wisechoicewills.co.uk](http://www.wisechoicewills.co.uk)

from  
**CARE FEES**  
and  
**PROBATE COSTS**



Will Trusts & Probate Practice

*A wise choice*

MAKING A WILL HAS NEVER BEEN EASIER

# ASPECT

YOUR LOCAL ELECTRICIAN  
TOTTERNOE  
OVER 20 YEARS EXPERIENCE

## ELECTRICAL

CONSUMER UNIT UPGRADES (FUSE BOARDS)  
LIGHTING - INTERIOR, EXTERIOR & SECURITY  
REWIRING  
NEW INSTALLATIONS  
TESTING & INSPECTION

ALL WORKS TO CURRENT WIRING & BUILDING REGULATIONS  
PART P CERTIFICATED & FULLY INSURED

DONT TRY THIS !



CALL STEVE ON  
07976 283969 / 01582 665068  
[aspect@sparky.me](mailto:aspect@sparky.me)



**EXCEEDING EXPECTATIONS IS JUST PART OF OUR SERVICE**



If you're **selling, letting** or **buying** a home, make it happen with your local estate agent



01525 220605 • [info@giblinproperty.co.uk](mailto:info@giblinproperty.co.uk)  
[www.giblinproperty.co.uk](http://www.giblinproperty.co.uk)

# THE WORKTOP SPECIALIST

**DELIVERING OUTSTANDING QUALITY & SERVICE FOR ALL YOUR WORKTOP & JOINERY NEEDS FOR OVER 50 YEARS**

- FREE HOME MEASURING SERVICE
- CUTTING & EDGING SERVICE AVAILABLE
- VISIT OUR BRAND NEW SHOWROOM

Abbey Gate, Boscombe Road,  
Dunstable, Bedfordshire, LU5 4FA

Tel: 01582 668 973 Fax: 01582 608 227  
Email: [sales@dunstablelaminates.co.uk](mailto:sales@dunstablelaminates.co.uk)  
Web: [www.dunstablelaminates.co.uk](http://www.dunstablelaminates.co.uk)



@DLaminates



Dunstable Laminates



**D R Property Services**

Kitchens  
Bathrooms  
Repairs & Improvements

01525 237498  
07970 260518

[drpsuk.pt@gmail.com](mailto:drpsuk.pt@gmail.com)




**Café masala**  
*Exquisite Indian Cuisine*

We Cater for Office or Private Parties and don't forget to try our Sunday Buffet  
10% Discount on all Takeaway Orders Over £12  
Fully Licensed & Air Conditioned  
Open Seven Days a Week  
Hours: 12 Noon to 2.30pm & 6.00pm to 11.30pm  
**Tel: 01525 22 22 64**  
63 Bower Lane · Eaton Bray · Dunstable · Beds · LU6 1RB  
email: [taraque@hotmail.co.uk](mailto:taraque@hotmail.co.uk) · [www.cafemasala.com](http://www.cafemasala.com)

**Anne Johnson D.O.**  
**Registered Osteopath**

6 Moor End,  
Eaton Bray

01525 221958  
07957 250682



**I'M REGISTERED**  
Registration no. 1495  
[www.osteopathy.org.uk](http://www.osteopathy.org.uk)

# alto window cleaning

*A reliable and professional service.....*

- Window Cleaning
- Conservatory Cleaning
- Fascia & Gutter Cleaning
- Solar Panel Cleaning

**T: 01525 234120**  
**M: 07807 973871**

## AARON FENCING

ALL TYPES OF DOMESTIC & COMMERCIAL  
FENCING & DECKING WORK UNDERTAKEN

*FREE ESTIMATES*  
*FULLY QUALIFIED & INSURED*  
*PERSONAL SERVICE AT COMPETITIVE PRICES*

**TEL: 01582 665779**  
**MOBILE: 07798 927272**

7 STATION ROAD, DUNSTABLE, LU5 4HS

## YEARDYE

*Luxury Bathrooms*

A family-run  
business for  
over 25 years

DESIGN  
SUPPLY  
INSTALLATION



[www.yeardyeluxurybathrooms.co.uk](http://www.yeardyeluxurybathrooms.co.uk)

email: [bathrooms@yeardye.com](mailto:bathrooms@yeardye.com)  
T: 01296 706220 T: 01525 222717

Buy Direct From Our  
Own Farm

Master Card

VISA

From **Ivinghoe Turf**

- Commercial & Domestic
- Small Orders Welcome
- Bark, Grass Seed & Fertiliser
- Laying Service
- Discount on Larger Orders
- Screened & Blended Topsoil
- All Year Availability
- Forklift Delivery Available



ROLAWN<sup>®</sup>  
Approved Rolawn  
Stockist

Family firm farming since 1949

**ALL AREAS**

Freephone :

**0800 043 5061**

[www.ivinghoeturf.com](http://www.ivinghoeturf.com)

The Bungalow, Vicarage Farm, Ivinghoe, Leighton Buzzard

## ARC Contract Services Ltd

- Painting & Decorating • Plastering
  - Wall & Floor Tiling • Door Hanging
  - Bathroom & Kitchen Installations
- 20 years experience

All work guaranteed and fully insured

Call Adrian : **01582 539179**

Mobile : **07789730580**



**WESTROPE BROS.**

**LAWN MOWER SERVICES**

ALL TYPES GARDEN MOWERS SERVICED

**THE RYE, EATON BRAY**

**Tel: Eaton Bray 220587**

# Gas Boiler Servicing

Over 40 years experience

Have your boiler serviced by a **Gas Safe**  
and **CORGI** registered engineer

Other services available:

Maintenance, repair and installation of all domestic gas appliances including LPG. Boiler installations, Landlord Safety Certificates and Power flushing.

Free Quotes, no call out fee, and free friendly advice on all of the above.

## Edwards Gas & Heating Services

Eaton Bray



# Tel 01525 220626

[www.edwardsgasandheating.co.uk](http://www.edwardsgasandheating.co.uk)  
[stevethegas@orange.net](mailto:stevethegas@orange.net)



## Vicky

The Dog Grooming Specialist  
[www.vickysdogcare.co.uk](http://www.vickysdogcare.co.uk)



*With a reputation for offering an exceptional personal service*



- Over 29 years of professional experience
- Trained at the London Academy of Professional Groomers to the highest City and Guilds standard
- Dorwest Veterinary Trained
- Member of the Pet Industry Federation
- Sympathetic and gentle handling of all dogs
- **FREE** Health check with every grooming session
- **No cages used! No cage dryers!**
- One to one personal attention.....loads of TLC

### Where Dogs Come First!



Mobile: 07796 445416

Telephone: 01525 222775

Email: [enquiries@vickysdogcare.co.uk](mailto:enquiries@vickysdogcare.co.uk)



*Committed to the highest standards of animal welfare and customer care*



Over 30  
Years  
experience.  
FREE  
Quotes

# Misty Double Glazing?

Over 30  
Years  
experience.  
FREE  
Quotes

**KEEP YOUR WINDOW FRAMES...  
... WE JUST REPLACE THE GLASS!**

- UPVC • Aluminium • Or Wood

Because we replace just the glass the repair is a  
Fraction of the cost of a complete replacement window.

BEFORE



AFTER



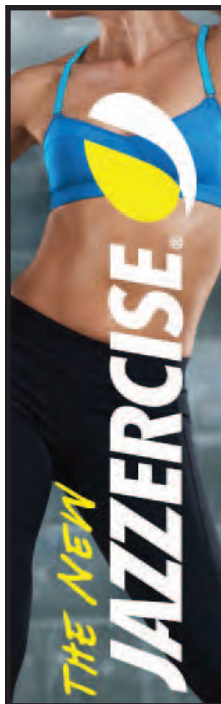
[mistydoublinglazing.co.uk](http://mistydoublinglazing.co.uk)

**QUALITY GLAZING SERVICES**

**01525 876808**

**WE ALSO REPLACE BROKEN...**

- Glass • Handles • Hinges & Locks
- AND REPAIR...Patio Doors & Conservatories!**



**JAZZERCISE  
DANCEMIXX  
CLASSES  
AT ST MARY'S  
EATON BRAY  
9.30am  
THURS & SAT  
AND  
BREWERS HILL  
DUNSTABLE  
7.45pm  
MON & WED**

**01525 715208  
angelajazzercise  
@gmail.com**

# REVIVE HOLISTIC THERAPY

Holistic therapies are concerned with treatment through massage, manipulation and relaxation. They are not only treatments for one physical ailment or one part of the body, but also treat the person as a whole.

Ideal for today's stressful lifestyles.

Treatments include:

- Aromatherapy Massage
- Indian Head Massage
- Hot Stone Massage
- Reflexology
- Reiki

Vouchers are available for any treatment, so why not treat a loved one or friend as well as yourself.

Edlesborough based. For more information or to book an appointment call  
Kate Meredith IIHHT, RGN, on **01525 221380**



*HPC Registered  
CHIROPODIST & PODIATRIST*



*(Also Central Luton surgery - open 6 days)*

*Stuart Ball  
Ceramic Tiler  
Specialist  
at all aspects of  
Wall & Floor Tiling  
Over 32 yrs Experience  
01525 229381*



## Stephen D. Janes

*(Established in 1982)*

**CARPENTRY, JOINERY  
KITCHENS FITTED  
PROPERTY MAINTENANCE  
TELEPHONE: 01525 220649**

**G & J Groundwork  
Ring Garry**  
**01582 477568  
07949 118011**

**Fencing Panels • Blockpaving • Paths  
Shingle Drives • Slabs • Paving  
Steps • Gardenwalls • New Patios  
Relaying • Soak Aways • Drainage  
Free estimates or advice • References  
[www.gandjgroundwork.co.uk](http://www.gandjgroundwork.co.uk)**

## Neil Hodson Associates

*BUILDING DESIGN  
STRUCTURAL ENGINEERING*

**PROFESSIONAL BUILDING DESIGN,  
ADVISORY AND DRAWING SERVICES**

From plans for domestic extensions  
to multi-storey offices, commercial  
buildings and factories.

Structural surveys, site surveying,  
advice on building defects and  
Feasibility Studies

Planning Applications and Building  
Regulation Consents obtained.

**24 HIGH ST TRING  
Tel 01442 890894 OR  
Edlesborough 222462**



At Ian Waldron Photography we strive to capture images that are both relaxed and natural. We do this with little fuss or intrusion so you can enjoy one of the most special days of your lives! This is also true of our portraits which are all done on location which captures you and your family perfectly.

**Ian Waldron**  
naturally relaxed photography

[www.ianwaldronphotography.com](http://www.ianwaldronphotography.com)  
01525 221479  
Your Village Photographer

ST. MARY'S LADIES GUILD

INVITE YOU TO A

# COFFEE MORNING

IN AID OF CHILDREN'S AIR  
AMBULANCE

SATURDAY 23rd MAY  
ST. MARY'S CHURCH  
10am - 12 noon

CAKES -- PLANTS -- CRAFTS  
BRIC A BRAC -- RAFFLE

ENTRANCE: ADULTS £1  
INCLUDING REFRESHMENTS

invites you to

Eaton Bray  
Methodist  
Church

# Café Community

Saturday April 11th  
11.00am to 1.00pm

Relax & chat with friends,  
coffee/light lunch

Charity of the month:  
Medecins Sans Frontieres

All ages welcome (inc. activity area).



## Afternoon Tea

Friday, April 17th  
2.30 - 4.30 pm

Northall Village Hall

Tickets £4.00

in advance or at the door

Raffle & Phoenix Trading greeting  
cards on sale

In aid of WI's Denman College

For further details or to buy  
tickets please contact:

Sally Taylor on 01525 221576  
sally.taylor32@btinternet.com

Northall and District  
Age Concern

## Wednesday Club

would like to invite you to their

## Coffee Morning

on

Wednesday 29th April

10am-11:30am

at Northall Village Hall

Bring & Buy, homemade cakes,  
jams and pickles, Bric-a-brac,  
raffle

Entrance- 50p  
(to include drink and biscuits)

Market your home with us and receive an exclusive **free microsite** for your property to be shared across your chosen social networks.



Visit **mandmproperties.tv** to find out more.  
The only Estate Agent in Leighton Buzzard to offer this unique and unrivalled service.  
**Call us for more details**

Tel: 01525 377733 | [mandmproperties.co.uk](http://mandmproperties.co.uk) | [mandmproperties.tv](http://mandmproperties.tv)



## Live a healthy & active life

Free 10 minute advice chats with our Chartered Physiotherapists & HCPC Registered Podiatrists

PHYSIOTHERAPY  
PODIATRY &  
CHIROPODY  
PILATES  
ACUPUNCTURE  
SPORTS INJURIES  
MASSAGE  
WOMEN'S HEALTH  
& PREGNANCY  
CARE

**St. Judes**  
physiotherapy, health and well being  
**01525 377751**   
[enquiries@stjudesclinic.com](mailto:enquiries@stjudesclinic.com)  
[www.stjudesclinic.com](http://www.stjudesclinic.com)

# J Able bathrooms

**New Showroom NOW Open in Edlesborough**

### DESIGN

Free CAD design of your bathroom, This will give you a photo realistic finished plan of your design.

### SUPPLY

Come and browse our display suites, This will help you decide on the perfect bathroom for your needs.

### INSTALLATION

Our installations are of the highest standards!  
We take pride in making you delighted with the finished result.

We have suites in a wide range of styles to suit your budget.  
Drop in or ring to make an evening appointment at the showroom  
or a home visit at your convenience.

#### Opening Times

Monday. 9am-5pm  
Tuesday. 9am-1pm  
Wednesday. Closed  
Thursday. 9am-1pm  
Friday. 9am-5pm  
Saturday. 9am-1pm  
Sunday. Closed

**T: 01525 220043 M: 07891 449077**

3 Summerleys, Edlesborough, Buckinghamshire, LU6 2HR  
W: [www.jablebathrooms.co.uk](http://www.jablebathrooms.co.uk) E: [ableplumbing@hotmail.co.uk](mailto:ableplumbing@hotmail.co.uk)

# fancy a break?



LUXURY 3 BED, 2 BATH APARTMENT APPROX 1 MILE FROM CENTRE OF PUERTO BANUS MARINA, SPAIN. 45 MINS EASY DRIVING FROM MALAGA AIRPORT.

ALL MOD CONS INCLUDING AIR-CON, SAT TV, FULLY EQUIPPED KITCHEN, SWIMMING POOLS, EXCELLENT CLUBHOUSE & TENNIS COURTS.

MANY GOLF COURSES AND ALL WEATHER BOWLING GREENS NEARBY. CLIMATE IDEAL FOR HOLIDAYS THROUGHOUT THE YEAR. RATES £350 - £750.

CALL PETER OR CELIA ON 01525 220173 OR VISIT OUR WEBSITE AT WWW.479LOSANARANJOS.CO.UK.



*'A fresh approach to selling property' ...*

**IN AND AROUND YOUR VILLAGE**

**Phone now for a free, no obligation, Valuation of your Property**

**01296 660230**

**01442 863737**

**[www.plummproperty.co.uk](http://www.plummproperty.co.uk)**

## Absolutely Plastered

**DOMESTIC/COMMERCIAL,  
CLEAN AND RELIABLE SERVICE,  
FREE ESTIMATES, FRIENDLY ADVICE**



- \* Plastering & Coving
- \* Floor Screeding
- \* Pebbledashing & Rendering
- \* Dry Lining
- \* Cornices & Mouldings
- \* Insurance Work Undertaken

**CALL NICK CONWAY ON**

**Mobile: 07751 830716**

**Tel: 01296 688981**

**6 Cotes Way, Wing, LU7 0RB**

*Established over 20 Years*

## Duncan Tomblin TREE SURGEON

**Forestry Contractor • Tree Felling  
Crown Reduction & Thinnings  
Deadwooding • Hedge Cutting  
Stump Grinding • Site Clearance  
Private Agriculture Fencing Contractor  
Chipper & Stump Grinding Hire  
Digger Hire**

**FULL PUBLIC LIABILITY INSURANCE  
FREE ESTIMATES**

*'The Best Choice For Your Tree'*

**TEL: (01525) 221946**

**MOBILE: (07802) 410728**

**12 Greenways, Eaton Bray, Beds**



# Comedy Night

Saturday 16<sup>th</sup> May

Doors open 7.15pm – show starts at 8pm

Eaton Bray Village Hall,  
Church Lane  
Eaton Bray

Tickets £10.00 per person  
(must be bought in advance)  
Please call the box office on  
01525 229 656 or 07562 939 002  
or 07815 067 556

It's a star in the making with his wit and fiery performance! The Latest  
**KELLY KINGHAM**  
**LUKE GRAVES**  
**JACK CAMPBELL**  
**& JASON SIMMONS**



Cash bar all night. Hot & cold food served during the interval  
organised by the Lions Club of Eaton Bray & Edlesborough



## WELCOME TO EB LIONS AFC

Your local village football club offering training and matches for boys and girls from U5 to U18 years.

An FA Charter Community club, with 28 teams and over 300 players proudly celebrating our 20th season this year.



Young players wanted...to join our successful children's football club, based within Eaton Bray, Edlesborough and the surrounding villages.

We welcome any new player, especially from the villages we serve, to train and play locally.

We are also specifically recruiting;  
U8 Boys & Girls (Current school year 3)  
U10 Girls (Current school years 4 & 5)  
U12 Girls (Current school years 6 & 7)  
U14 Girls (Current school years 8 & 9)  
New coaches and assistant coaches  
Find out more about the club  
[www.eblions.co.uk](http://www.eblions.co.uk)  
or email [footballdevelopment@eblions.co.uk](mailto:footballdevelopment@eblions.co.uk)



# EDaN BEAUTIFICATION TEAM



## MONDAY 4<sup>TH</sup> MAY 2015

### Edlesborough Village Green

(Access in Pebblemoor - 2 metre height restriction)

- Sellers 8.30 a.m @ £10.00 per car
- Buyers from 9.00 a.m till 12.00
- Refreshments served all morning  
- try our great bacon butties!

Queries? T: Christine 01525 220739/e:chris@brooklyns.org.uk

### NO NEED TO BOOK – JUST COME ALONG



**Welcome to  
Eaton Bray Academy**

Telephone: 01525 220468  
Email: [admin@eba.ec](mailto:admin@eba.ec)

*A wonderful place to be*





# Patricia

Mobile Beauty Therapist

Massage & Beauty Treatments

01525 237781

07866 126510

Fully Accredited & Insured



## McTimoney CHIROPRACTIC



Margie Craib BSc BHSI DC AMC MMCA  
Human and Animal Treatments

Ashridge Farm, Ringshall, Berkhamsted, Herts HP4 1ND  
Telephone: (01442) 842729

General Chiropractic Council Registration No. 293



Virtual administrative  
support to businesses &  
private individuals

Website hosting

Domain registration

Desktop publishing

# 01525 229695

Email:

[enquiries@morenassociates.co.uk](mailto:enquiries@morenassociates.co.uk)

[www.morenassociates.co.uk](http://www.morenassociates.co.uk)

## ADRIENNE'S PRIVATE HIRE

Call for a FREE quotation  
Book early to avoid disappointment  
Very competitive prices

Airport Transfers  
& Private Hire

07980 039715

Our executive Cars, 6 seater Minibuses and  
lady driver are all available



## J.G.S. Metalwork & Son

Specialists in Gates  
& Gate Automation

Access Control • Security Grilles • Railings  
Balconies • Stairwells

[www.jgsmetalwork.co.uk](http://www.jgsmetalwork.co.uk)

Call in to discuss your ideas

High Street, Edlesborough LU6 2HS

Tel: 01525 220360 Fax: 01525 222786

## GRASS ROOTS GARDEN MAINTENANCE

TREE SURGERY, HEDGE PRUNING,  
SELECTION SUPPLY AND PLANTING OF  
TREES, SHRUBS AND HEDGES.  
REGULAR MAINTENANCE/ONE-OFF JOBS  
(Fully Insured)

Brian McMahon NCH (Arb)

01525 221960



## Edlesborough Flowers

Flowers, Gifts, Jewellery  
& More...

2 High Street,  
Edlesborough,  
LU6 2HS

Tel: 01525 221920



**Join us for the Midsummer Festival at our picturesque medieval church on the hill**

**Saturday:** Childrens' Choirfest (free) - opened by John Bercow MP  
'Chill on the Hill' - a sensational night of music. Many old favourites returning by popular demand.

Tickets available in Janes from May.

**Sunday:** Edlesborough's 'Antiques on the Hill'. Bring along your treasures for valuation and enjoy our wide variety of real ales, wine, Pimms, cream teas etc. - all weekend... topped off with a melodious blast from the bells and Songs of Praise

See details of all the entertainment + art and floristry workshops at -  
[www.edlesboroughchurch.org.uk](http://www.edlesboroughchurch.org.uk) - or visit us on Facebook

# 12<sup>th</sup> Eaton Bray Village Hall Beer and Cider Festival

Friday 5<sup>th</sup> June/Saturday 6<sup>th</sup> June



30 Real Ales + 2 ciders and 2 perrys  
Soft drinks, lager and wine available

Hot food and BBQ available

Lunchtime and evenings

Live entertainment: Friday night - Jerome Chance

Saturday afternoon Family Magic Show

Saturday 5pm The Dicemen

Saturday evening - Bob Thompson

Fri - mid-day till 11pm, Saturday mid-day till 11pm

Entrance £3 by raffle ticket

Free to CAMRA members with card proof

# ILLUSTRIA

## Kennels & Kathotel

Offering your pet a fully licensed Dog and Cat boarding service.

Purpose built Dog kennels

Individual Cat chalets with outdoor exercise runs

All in pleasant country surroundings

**01582 ~ 665343**



ILLUSTRIA  
Springfield Road  
Wellhead  
NR Dunstable Beds  
LU6 2JT



Proprietors

*Mick, Denise and Michele Garrod*



## The Gentleman Gardener

Let your local RHS qualified gardener make your garden beautiful, from simple garden maintenance to total redesign of your garden.

Please call Barry on  
**01525-222451 or  
07541196384**

to pop round for a free chat.

## N.D.S.

**General Building & Plumbing**  
(25 years experience)

- Roofing; Installer of UPVC guttering, soffits & fascia boards
- Kitchens & Bathrooms fitted
- Property Maintenance
- Fencing • Patios & Block Paving
- Gazebos • Garden Structures

**Tel: 01525 221470**

**Mobile: 07946 626564**

**FREE ESTIMATES**

...

**ALL WORK CONSIDERED  
NO JOB TOO SMALL**

For a top quality  
decorating job call

# Marc Flack

**01525 223166**

Trading locally for 10 years  
References are available

Make your house a home with blinds and awnings from

**VANSAR  
BLINDS**



[www.vansarblinds.co.uk](http://www.vansarblinds.co.uk)



- Free No Obligation Measuring And Quotations
- All Blinds Made To Measure
- Choose In The Comfort Of Your Own Home Or Workplace
- Family Run Business
- Large Range Of Quality, Affordable Fabrics And Colours To Choose From



Call: 01525 220477 or 01582 699565 E: [sales@vansarblinds.co.uk](mailto:sales@vansarblinds.co.uk)

### Financially Prudent (IFA) Ltd

23 The Green, Edlesborough, LU6 2JF

Your local IFA for impartial Personal or Corporate advice on:

- Mortgages
- Pensions & Annuities
- Insurance
- Savings & Investments

Call Paul Pearce on 01525 220480 or email [paul@finpru.com](mailto:paul@finpru.com) for a no obligation initial discussion



Financially Prudent (IFA) Ltd is authorised and regulated by the Financial Conduct Authority



### Established Village Dog Grooming Service

Professional and Affordable  
Large breeds welcome  
Trained in Hand Stripping  
Nails, Ears and Glands included

Contact Ulrika Tel 01525 211592  
5 Mill Road, Stanbridge, Beds. LU7 9HX  
[www.abfabgrooming.co.uk](http://www.abfabgrooming.co.uk)

### Spinney Landscapes & Gardening Services

*All Aspects of Grounds Maintenance*

Weed Control • Driveways & Patios  
Lawn Care & Scarifying • Fencing  
Turving • Tree Work  
Snow Cleaning & Gritting

Tel: 01582 872084 Mob: 07876 500292  
Email: [chambo.1628@btinternet.com](mailto:chambo.1628@btinternet.com)



## Appledown Rescue and Rehoming Kennels



# FUN DOG SHOW!

Sunday 10<sup>th</sup> May

Come along to Appledown  
for a great family day out!

12 classes including Waggiest Tail & Best Rescue!  
Refreshments & Stalls

Show opens at 11 a.m. Classes commence 12 noon.

Judge: Lynne Davies. Entries on the day

Appledown Rescue & Rehoming Kennels, Harling Road,  
Eaton Bray, Beds LU6 1QY. 01525 220383

(Registered Charity Number 1116848)

## Master Chef comes to EBA Primary

The tension was mounting, the plates were ready to be presented and Mr Wallis (not to be confused with Gregg Wallace) appeared ready to judge...

Our Year 5 and 6 classes have been taking part in the EBA Master Chef competition. Each week they have been given a different task ranging from a hot sandwich to a sauce for pasta. The children have worked in teams of three. They had twenty minutes to devise, plan and organise their dish and the ingredients the previous week. For the week's competition they had a set time and were marked throughout the session on a number of things such as keeping their area clean, team work, and cutting skills, and finally on the taste and presentation of their dishes. Tips were also given so they could improve the following week. They were judged by our School chef Mr Wallis. The winners – Millie, Nathaniel and Michael (MNM team) - went to Brassiere Blanc in

Milton Keynes and tasted snails, followed by the charcuterie board and then baked and tasted their own chocolate cake.

The next project for the EBA Enterprise team is to dig a new allotment; plant, grow, cook and then hopefully sell at an EBA Farmers Market! Watch this space!





## Edlesborough School invaded by an array of book characters!

On Thursday 5th March, to celebrate this international day of books, pupils of Edlesborough School came dressed as their favourite book character.



To kick off the day, our PTA committee known to us as FOES, kindly ran a Books for Breakfast. This is where children, accompanied by their parents, come in before school, choose a breakfast to eat



and then read and share books with their parents. This is always a very popular event and we would like to thank FOES for their time and generosity in running this for us.

For the remainder of the day, the children carried out work and activities based on a book which they had been looking at over the course of the week within their class. As always, the children (and staff!) looked superb in their outfits. We would like to thank parents for their continued support of this international day of celebrating books and a love of reading!



# S M Reilly & Son Ltd

## General Builders & Contractors



Turning Your House into  
a Home Since 1987

*All aspects of the building  
trade undertaken*

- \*Extensions\*Hard Landscaping\*
- \*Windows, Doors & Conservatories\*
- \*Fitting of Aluminium Bi-fold Doors\*
- \*Kitchen & Bathrooms\*Drives\*
- \*Loft Conversions\*

**01525 221740**  
**07970 637511**

**ALAN BOULT**  
(Light Haulage)



- TRANSPORT ● COLLECTION
- DELIVERY SERVICE
- SINGLE TO MULTIPLE ITEMS
- REGULAR CONTRACTS WELCOME

**Tel: 01296 427182**

**Mobile: 07770 237745**

Email: [boulton586@btinternet.com](mailto:boulton586@btinternet.com)

**A McClelland**  
**Pest Control**



**FOR FAST RESPONSE CALL:**  
**mobile 0777 494 8415 or office 01582 872158**

*specialists in: wasps - bees - ants - hornets  
fleas - cockroaches - bed bugs - pigeons - magpies  
rabbits - rats - mice - moles - squirrels - foxes - mink - feral cats*

**UNMARKED VEHICLES**

For further information please call  
or email [a.mcclelland\\_pestcontrol@hotmail.co.uk](mailto:a.mcclelland_pestcontrol@hotmail.co.uk)



**Tel: 01525 221847**  
**sales@act.uk.com**





**GENERALMECHANICALSERVICESLTD**

VEHICLE SERVICING AND REPAIRS



**MOTs • MOT REPAIRS • SERVICING  
DIAGNOSTICS • TRACKING • AIR CONDITIONING  
TYRES • CAMBELTS • COLLECTION & DELIVERY  
WELDING & FABRICATION • BATTERIES**

**All vehicles - all mechanical work!**

**1 HONEYWICK LANE, EATON BRAY, LU6 2BJ**

**reception@general-mechanical-services.co.uk**

**www.general-mechanical-services.co.uk**



**01525 222876**



**TEL: 01582 667924**



13185

**"Good reputations take years to build"**

***GRAHAME PRATT***

**Plumbing & Heating Engineers**

**Plumbing & Heating  
Bath & Shower Room Design and Installation  
Ceramic Floor & Wall Tiling  
Kitchen Installation  
Small Building Works**

**www.grahameprattplumbing.co.uk**

**Email - [enquire@grahameprattplumbing.co.uk](mailto:enquire@grahameprattplumbing.co.uk)**

# OPEN GARDENS FESTIVAL 26 July 2015

## Wanted - Gardens

In Eaton Bray, Edlesborough or Northall

Would you be willing to open your garden for the day to help raise money for charity?

If so, or you would like more information, please contact Kay Griffiths on 222849 or Gordon Gray on 220136.

24 Hour Locksmith Service 07961 017210

## Dunstable Lock & Safe Co

### Locksmiths & Safe Engineers

40 years experience

- : Anti-snap security cylinders
- : Upvc door & window locks
- : Safes supplied & fitted
- : Master key cutters
- : Safes opened & repaired
- : All locks supplied & fitted

Family owned & run business.  
don't act after the event - call us today  
to discuss your security requirements  
however big or small !

**Call today 01582 696108**

[www.dunstablelockandsafe.com](http://www.dunstablelockandsafe.com)

89 High street south, Dunstable LU6 3SF

Buy 1 key get 2nd half price - Saturdays

**Made to order  
garden furniture & ornaments**

**Call John on: 0789 506 8251**



**Makes an ideal gift  
for any occasion**



David Brown

## Window Cleaning

Quality Reliable Service.

Regular, Occasional or  
Single Visits.

Friendly Free Estimates.

Facias, Guttering & Conservatories.

External Cleaning & Maintenance.

Fully Insured.

**Phone 01582 472113**

**Mobile 07534 837073**

# D & E HINES

## High-Class Butchers

Quality Beef, Pork & Lamb

Grade A Poultry

BBQ & Sausage Speciality

*Renowned for 'Bunkers Sausages'*

**Telephone: 01525 220413**

**98 High Street, Eaton Bray**

## Eaton Bray Village Hall



- ❖ Equipped to support theatrical productions and film shows
- ❖ Large car park
- ❖ Large Kitchen with a six ring cooker, large refrigerator, hot trolley, crockery etc.
- ❖ 3 separate areas to hire to meet your needs and budget
- ❖ For more information and brochure please ring Norman on 07975 797202

- ❖ Superb venue for weddings
- ❖ Fantastic place for parties and dances
- ❖ A must for children's parties, can fit the bouncy castle inside if weather dictates!!!
- ❖ Keep fit groups
- ❖ Ideal for Club meetings or functions



# Dagnall School



**A Buckinghamshire co-educational school**

**For 4-7 year olds**



Dagnall School offers small class sizes, an exciting curriculum, excellent care and support and good links with the local community



Ofsted 2011  
"Pupils are confident,  
very happy at school  
and curious to learn."



Tel: 01442 842473



[www.dagnall.bucks.sch.uk](http://www.dagnall.bucks.sch.uk)

E-mail: [office@dagnall.bucks.sch.uk](mailto:office@dagnall.bucks.sch.uk)

## G.N.C Wall & Floor Tiling

Covering all aspects of tiling from  
Natural Stone & Porcelain to ceramics



[gnctiling@hotmail.com](mailto:gnctiling@hotmail.com)

Providing assurance & attendance through to  
completion of works

For a free full & comprehensive quotation  
please call Colin Bell

---

07725 033017

01525 222094

## D.A. Windows Doors & Conservatories

23 Church Lane, Eaton Bray, LU6 2 DJ

Tel: 01525 221051 Mobile: 07801 798387

email: [mimcavinder@hotmail.com](mailto:mimcavinder@hotmail.com)

AUTHORISED  
SWISH INSTALLER  
WITH OVER 20  
YEARS  
EXPERIENCE

Installation of PVCu windows, doors and conservatories  
Replacement glass units and window maintenance

QUALITY PRODUCTS - QUALITY WORKMANSHIP -  
REASONABLE PRICES



General building  
maintenance work  
also undertaken  
including:  
Fascias and Soffits  
Gutters  
Fencing

Accredited Member of the  
Incorporation of Plastic  
Window Fabricators and  
Installers Limited



# PLUMBING AND HEATING

FOR ALL YOUR PLUMBING, HEATING AND GAS  
REQUIREMENTS

NOSSITER AND BARNETT LIMITED  
PLUMBING AND HEATING

CONTACT MATT OR JAMIE  
TEL 01525 229524 MOB 07802 270427





# Protecting what's important

## MJ Security Systems Ltd

### MJ Security Systems

Contact Us For More Information

Unit 4, Arianne Business Centre,  
Blackburn Road,  
Townsend Industrial Estate,  
Houghton Regis,  
Bedfordshire,  
LU5 5DZ

Please call for a free quotation

**T: 0800 0856126**

**E: [info@mjsecurity.co.uk](mailto:info@mjsecurity.co.uk)**

**W: [www.mjsecurity.co.uk](http://www.mjsecurity.co.uk)**



We also specialise in:

- IP Cameras
- Intruder Alarms
- Access Control
- CCTV & Monitoring
- Door Entry
- Covert Cameras
- Security Lighting



FROM ONLY  
£439.95+VAT  
Products and  
Installation



**Kit includes:**

1 x Wireless Door Contact, 2 x Wireless  
P.I.R., 1 x Wireless Sounder, 2 x Remote Set  
and Unset Fobs.

Stylish • Wireless • Secure

## M . P . S

Maintenance & Property Services

- KITCHENS AND BATHROOMS
- PAINTING AND DECORATING
- PROPERTY RENOVATIONS
- PLASTERBOARDING
- FENCING

FREE ESTIMATES

NO CALL OUT CHARGE

NO JOB TO SMALL

LOCAL

Contact:- Julian

**07958 306301**

E-mail – [mps@mustoe.co.uk](mailto:mps@mustoe.co.uk)

[www.mustoe.co.uk](http://www.mustoe.co.uk)

# Leighton Aerials

Established 1970

For all your aerial and  
satellite needs call Colin  
on 01525 374742



# Edlesborough School & Pre-School



*Pupils' behaviour is outstanding...*

*The environment for learning is exciting and stimulating...*

*A real strength of the school is pupils' attitude to their learning .*

*Ofsted 2013*

For more information about our School, Pre-School and Before and After School facilities, visit our website at [www.edlesborough.bucks.sch.uk](http://www.edlesborough.bucks.sch.uk)

Please contact the school on 01525 220431 to arrange a visit.

# CHIMNEY SWEEP

Local & Est. Brush n Vac  
Friendly, Clean and Efficient

Call **KEVIN HING** on

Tel: 01525 371592

Mob: 07940 528897

[www.khing.co.uk](http://www.khing.co.uk)

Member of NACS

**eww**

E W Wallace & Co  
Chartered Accountants  
Tax Consultants  
Business Advisors

Small business specialists serving  
Beds, Bucks & Herts

- Annual accounts
- Tax returns
- Self-employed
- Limited companies
- Small business specialist
- Sage Accounts expertise
- Prompt, personal service
- Value-for-money fees
- Free initial consultation

01525 220826

[www.ewwallace.co.uk](http://www.ewwallace.co.uk)



**JAMES FALCON-CROSS**

## LANDSCAPING AND OUTDOOR LIVING DESIGN



**ALL ASPECTS OF LANDSCAPING  
UNDERTAKEN INCLUDING  
FENCING, TURFING AND PATIOS  
TIMBER STRUCTURES  
DESIGNED AND BUILT**

**VEGETABLE AND HERB GARDENS**

**01442 843258 / 07769 901325**

**ONECROSSFALCON@GMAIL.COM**



# Beau

HAIR AND BEAUTY SALON

- Unisex hair salon
- Hair Extensions
- Nail Bar
- Wedding, Prom Hair Styling
- Express Eyelash
- Girls Glamour Parties
- Accessories
- Loyalty Cards

01525 220926

3 Summerleys, Edlesborough LU6 2HR

For lots more offers and news about what is happening follow  
and like us on  Beau Hair & Beauty  @beausalon

CND   
Shellac™

KOLESTON  
PERFECT

O·P·I

Beauty  
Works  
CELEBRITY  
CHOICE

ghd



Home or Business  
IT Support



Visit Our Website at [www.hobit.co.uk](http://www.hobit.co.uk)

Laptop Repair • Virus Removal • Data Recovery  
Laptop Screen Replacement • Data Transfer  
Wired & Wireless Networks • Broadband Setup  
Backup Solutions • Printing Problems  
Tune Ups • 1:1 Training • Email Problems  
Ipad & Iphone Connectivity Issues  
Computer Upgrades • Free advice

Call now 01525 378127 or 07702 80 70 90

RELIABLE - PROFESSIONAL - LOCAL

# RD Electrical

FULLY INSURED AND  
PART P QUALIFIED

NAPIT Registered.

No job too big or too small

Free no obligation quotes

All work undertaken  
including controls

Call Richard Ellison on  
07932 759680 or  
01525 222406

Email: [rdelectrical1@sky.com](mailto:rdelectrical1@sky.com)

9 High St, Eaton Bray LU6 2DN

## Reiki Therapy

Reiki means universal energy. It is a relaxing, calming therapy that calls on your own bodies natural healing properties. It is possible for Reiki to help with physical symptoms, emotional issues and spiritual growth.



Session is £30 per hour

Contact Nicola (Reiki level 2)

Mob 07941799772

01525837018

Bower Lane Eaton Bray

Wagging Wonderful  
Dog Grooming

Here to take care of your mucky pup!

- Your local grooming service in Eaton Bray!
- 1-2-1 care for your dog
- NO cages!

Telephone: 07580 343 396

Website: [waggingwonderful.weebly.com](http://waggingwonderful.weebly.com)

Email: [waggingwonderful@yahoo.co.uk](mailto:waggingwonderful@yahoo.co.uk)

## T. COBB

PLASTERING  
FLOOR SCREEDING  
PLASTER MOULDINGS  
CEMENT CORNICES  
RENDERING

GENERAL BUILDING & ALTERATIONS

TEL: 01525 792698 MOB: 07772 231348



## Harmony Plus Hair & Beauty Clinic

### Bridal Packages Available

We offer a range of treatments:

- 3D Lipo Fat Reduction
- Teeth Whitening
- Caci Non-Surgical Face Lift
- Crystal Clear Microdermabrasion
- Extreme Lashes and LVL's Lashes
- HD Eyebrows
- Fake Bake Tanning
- Young Blood Make-up
- Manic Nails
- Bio Sculpture Gels
- Shellac Nails
- Hot Stone Massage
- Reiki

Call us today

## Harmony Retreat

**FREE SPA PLACE**  
in our cosy log cabin  
**FOR THE BRIDE ONLY**

if the Bride books her Spa Hen Party  
for 5 people or more at  
Harmony Retreat's Log Cabin  
when Hair & Makeup is booked  
with Harmony Plus Hair & Beauty Clinic



Harmony Plus Hair & Beauty Clinic  
6A Wallace Drive • LY6 2DS • Dunstable/Leighton Buzzard  
07852 145053 • [www.harmonybeautysanctuary.net](http://www.harmonybeautysanctuary.net)



## C H BUILDERS

1 Richmond Court  
Eaton Bray  
Dunstable  
LU6 2DY

[cwhawkes@tiscali.co.uk](mailto:cwhawkes@tiscali.co.uk)  
Tel: 01525 229558  
Mob: 07989 357231

Local builder with over 35  
years experience in the trade,  
specialising in:

- Kitchen fitting and alterations
- Extensions
- Loft conversions
- Renovations

Recommendations available

Please contact Chris to discuss  
any requirements for a free  
quotation

## LINSLADE PHYSIOTHERAPY & SPORTS INJURY CLINIC

47a Coniston Road Linslade  
Leighton Buzzard Beds LU7 2PJ



*Affordable effective treatment to ..*

- Relieve your neck & back pain
- Loosen your stiff joints
- Ease your arthritis
- Get you back in the game after a sports injury
- Help you recover from surgery

**Why Wait To Feel Better?**  
Ring for an appointment now  
**01525 853462**

E-mail: [pt4u@linsladephysiotherapy.co.uk](mailto:pt4u@linsladephysiotherapy.co.uk)

*(Ample free parking available)*

## 8 Mile Hike to the Village Swan, Ivinghoe Aston via Ivinghoe Beacon



This is a more challenging walk that (excluding pub stops) takes approximately 90 minutes (one way). Starting these directions from St Mary's Church in Edlesborough, you walk along the bridlepath with beautiful open views towards the Beacon, Ivinghoe Aston and Coombe Bottom. You can often see pheasants, wood pigeons and the occasional dog walker along this path. This is a fairly flat bridle-way and as you walk along it, you cross the ubiquitous footbridge. At the end of the path you reach the main road into Ivinghoe Aston. At this point you can either pick up the Two Ridges Link on the other side, or turn left and walk up the road to join the B487. The first route is more scenic but brings you out at the Beacon at the steepest angle and this is a very steep climb.

Alternatively, if you walk up the road for 5 - 10 minutes you cross the B489 by a car park, and can reach the Beacon with a much easier climb. After climbing the Beacon and recovering at the top, you can walk back down the Beacon and retrace your steps along the main road into Ivinghoe Aston. If you continue along this road instead of rejoining the bridleway you continue into Ivinghoe Aston and come across the Village Swan.

This pub has a beautiful garden with plum trees and benches. The pub serves excellent food and also has seasonal drinks on tap such as mulled wine.

After recovering from the first leg of your walk, you continue along the road out of Ivinghoe Aston, heading towards Slapton.

Here you reach Vine Farm and Moses Cottage and there is a signpost for a public footpath. You head down the drive and bear left to pick up the footpath. You cross a little bridge where pheasants have been spotted in the past. After walking under mature trees, you walk along the boundary of the field and cross another footbridge - to your right is the site of an old moat. Here you eventually meet up with the road, which brings you back to The Swan at Northall, finely placed for another rest where you can enjoy the real woodburning stove in winter or the huge beer garden in the summer months.

From the book *Landscapes and Lives*.



### **The National Trust South Beds Assn**

**Wednesday 1 April**

**Poverty, Pauperism & the  
Allowance System**

*Ian Waller*

*Genealogist & Archive Researcher*

**7:45pm Salvation Army Centre,**

**Bull Pond Lane, Dunstable**

**Visitors are welcome at £1**

*For further information  
phone 01582 527790*

## Appledown's Rescue Dog of the Month



This young man is **Pickles!** He is a Jack Russell cross who is nine months old. He is a very affectionate little chap who enjoys plenty of attention. Pickles is house-trained

and good with other dogs. He is a very appealing dog and will make a super companion but, like all young dogs, he is lively and will need a family who are willing to devote the time to him.

If you feel you could offer Pickles, or any of our other dogs, a loving and secure

home please call in at the kennels any day between 10 a.m. and 4 p.m. Our staff will be happy to offer advice and information. We have restrictions on rehoming dogs to families with children under 7 years of age so please ask for details.

**Appledown Rescue and Rehoming Kennels**, Harling Road, Eaton Bray, Beds LU6 1QY.

Call 01525 220383 or e-mail:

[appledown.kennels@btinternet.com](mailto:appledown.kennels@btinternet.com)

Join us on Facebook

Visit our Website:

[www.appledownrescue.co.uk](http://www.appledownrescue.co.uk)

Reg Charity No. 1116848

## Better Backs for Gardeners

**Spring has finally sprung and the sunshine has sent us into our gardens in droves. Although gardening can be good for the mind, it can pay havoc with your body. Follow our tips for better backs and don't let an injury spoil your fun.**

- Before doing any physical exercise, warm up first with a walk and some gentle stretching.
- Take regular breaks and change position between jobs to avoid tiredness, overuse and injury.
- Keep your back straight when lifting and use your knees, thighs and arms

to help. Don't try to lift too much at one time – particularly those bags of compost!

- When digging, avoid twisting and straining and don't forget to take regular breaks.

- Use kneeler seats or mats when planting and don't overstretch by working too far in front of you.
- Mow a little at a time, keeping upright.
- Avoid overstretching when pruning by using long-handled shears and use secateurs with a cut and hold action.
- If using electric hedge trimmers don't hold them too far in front of you.
- Consider the planning of your garden – raised flower beds may save you twinges in the long run.

If you have any aches or pains consult a Chartered Physiotherapist for treatment and advice.

Happy Gardening!



**St Judes Clinic,**  
26 Lake Street  
Leighton Buzzard  
LU7 1RX

☎ 01525 377751

📍 [www.stjudesclinic.com](http://www.stjudesclinic.com)  
[enquiries@stjudesclinic.com](mailto:enquiries@stjudesclinic.com)

## Step into Spring

If you have drenched borders, this is an ideal time for establishing hedges and large shrubs, due to the available ground water. Improve the drainage ability of your borders by incorporating horticultural sand as well as organic matter, such as well rotted manure or garden compost.

Revitalise the herb planter by planting hardy herbs, for instance mint, sage and thyme.

Turf can be laid now, as long as there are no chances of frost. If a large area in the lawn needs to be re-done, sowing is another option and this month is a good time to start preparing the area for sowing. Sow tender annuals in a heated propagator. Dahlias can be started off in pots in a greenhouse.

By now all rose pruning should be done, however it is never too late! Start feeding

roses with a rose feed that is high in potassium and contains magnesium.

Cornus alba (dogwood) will benefit now from a hard pruning, however allow plants to go un-pruned for the first year after planting. Cut back to 8cm from the ground. This pruning will ensure young shoots with a vibrant winter stem colour.

Last chance for planting bare root stock, such as soft fruit and roses.

If any planting is intended, place horticultural clear plastic on the soil. This will increase the soil temperature, and will make a big difference in the establishing of the plants, as root growth starts to take place when the soil is 5°C and above. Do put down mulch straight after planting, using bark, pebbles and well rotted farm manure.



*St Mary's Church,  
Edlesborough  
will be open from May  
until September on the  
first Sunday in the month  
from 2pm to 5pm*

### *Friends of Ashridge Spring Plant Fair*

*Sunday 10th May 2015*

*11am-4pm*

*Ashridge Estate Visitor*

*Centre*

*Free entry*

*Thousands of plants for sale  
from private gardens and  
commercial nurseries*

*More info and plant donations:  
John Cartwright 01442 864 984*

*NT Ashridge Estate Visitor Centre,  
Monument Drive, Ringshall, HP4 1LX*

# Whipsnade Wild Animal Park

We live so close to it but how many of us visit the Zoo regularly. Even on a cold morning in the depths of Winter there can be no finer place to entertain yourself and of course children, than by walking the paths and watching the numerous collections of animals. I recall that soon after a life changing heart attack, I was advised that exercise was key to my recovery. Where better than Whipsnade, with its relative flat pathways to walk, and

at the same time view so many interesting species. This does not just include animals but at this time of year or at least very shortly, the bluebells will be in full bloom. Adjacent to the wolves enclosure is Whipsnade's very own "bluebell wood" which is truly a wonderful spectacle. All this whilst at the same time you are helping to protect endangered species.

✍️ Eaton Bray Resident

## Not a lot of People Know That...

When I was a child I was lucky enough to be brought up on the Greek island of Corfu. In those days - before the introduction of the detrimental insecticides and the all-destroying tourist boom - this enchanted island was a paradise for wildlife and so I caught and kept a menagerie of creatures. I made valiant attempts to confine these to my bedroom, but on more than one occasion they escaped and caused havoc, for my family were not as zoologically orientated as I was, and so the scattering of a matchbox full of scorpions among them as they sat at a meal had an electric effect.

But my bedroom teamed with strange



creatures, praying mantis with their prim evil faces and bulbous eye, tree frogs that looked as if carved out of jade, huge warted toads with great golden eyes, Squirrel dormice, shrews, sea horses and slugs, and outside in the garden a host of birds such as hoopoes, kestrels, magpies and seagulls, to say nothing of the three dogs and a donkey. I had, by that time, decided what I wanted to do in life. I wanted to travel the world collecting animals for zoos and, later, to establish a zoo of my own.



When we returned to England I realised that, if I was to achieve my ambitions, it was necessary for me to have experience with creatures bigger than scorpions and sea horses, so I applied for and, to my astonishment, got a job at Whipsnade. I was the lowest of the low, the relief keeper. It was Geoffrey VEVERS, then Superintendent of London Zoo, who, when he gave me my final reference, thought up the grandiose title of 'Student Keeper'. However, being the relief keeper suited me very well for I went on various sections to help out when people had their days off or sick leave. Thus, one minute I would be helping to deal with lions and tigers and the next day perhaps zebras and gnus or cranes and geese or - best of all - the creature I fell irrevocably in love with, the giraffe. Its enormous but elegant body, its strange silence, its huge liquid eyes, with eyelashes as thick as an Astrakhan rug, and its long blue tongue,



all went to make one of the strangest and most beautiful animals on earth, whose disappearance from this planet would be more terrible than losing a Rembrandt or the Acropolis. So my time at Whipsnade was, from my point of view, very well spent and stood me in good stead in the future.

A pioneer of its kind in a zoo world full of bars and concrete, Whipsnade showed the way animals could and should be kept and what all zoos should endeavour to emulate. Long may it prosper.

✍Gerald Durrell  
2nd August 1990


*Photos:*

*Zebra by Adrian Lewis*

*Elephants by Sally Siddons*

*Giraffe and Lemur by Andy Cross*

# How to Find a GOOD Estate Agent



*Jonathan Vernon Smith is the Sony Award winning mid-morning show presenter for BBC Three Counties Radio. During his consumer hour he helps listeners with their consumer problems and now shares his advice with you.*

God love 'em, they're the people we love to hate. ESTATE AGENTS!

I should make it clear at this point that a very dear member of my family is an estate agent, so I like to think I can approach this month's article with a level of fairness for a much criticised profession. However, some of them really are AWFUL!

The fundamental problem with the industry of estate agency is that you don't actually need any qualifications to become one. Any wide boy with a gift of the gab can quickly carve out a career as an estate agent. Depending on who they're working for, and the influences around them they can quickly pick up some very nasty habits. I, like many people have been amazed at the ability of some estate agents to not only stretch the truth to encourage a deal to go through, but to lie through their teeth.

The responsibility for finding a good estate agent lies solely with the seller (vendor). It can be infuriating as a buyer when you find a property you love that is on the market with a dishonest, unreliable and unprofessional estate agent. There's nothing you can do about it. In fact, I have pulled out of property deals before due to the estate agent representing the vendor.

When you are selling your house, DO YOUR RESEARCH! Keep an eye on the market in the months leading up to the decision to put your property on. See

which agents are selling houses/flats that are similar to yours. Ask your neighbours and friends in the area who have used an estate agent recently what their experience was like. Only look at companies that are prominent in your local neighbourhood and preferably those that have staff with experience.

When you have a list of 3 or 4 reputable firms, get them all round to value your property. Be open and honest with them and inform them that you are speaking to a number of agents. Tell them that to secure your business you'll be looking for them to do a deal on their commission. I personally NEVER pay more than 1% of the sale price to an estate agent (with today's house prices I think that's quite enough!). Introducing a sliding scale of commission can also be a motivating factor for them to get you the best price for the property. Look at the pictures they take of other properties to make sure they either use a professional or have the ability to showcase a house or flat nicely. Try calling them and speaking to those who answer the phone. Do they sound friendly, approachable and bright?

Make sure that the contract is reasonably short. You don't want to be tied to the same estate agent for the next 6 months if your property fails to sell.

Finally for sellers (and I speak from experience) DO NOT LEAVE YOUR KEYS WITH AN ESTATE AGENT. When selling my last property I made this mistake. In their desperation to get the sale to go through they took my buyer into my property without asking my permission first. Sadly I realised at that moment that my estate agent had failed to see my flat as my home, and could only focus on the commission they stood to



make from selling it.

For the buyer, you have much less control. This can be an absolutely horrible position to be in. There are some things you can do to help the process though.

1. Use your own mortgage advisor. The estate agents will try everything they can to get you to use 'their' advisor. Don't listen to a word of it. They are legally obliged to pass on any offer to their client, and cannot force you to use their chosen mortgage company.
2. Use your own solicitor. Again the agents will want you to use their conveyancing company. This will probably be a large company that is more like a conveyancing factory acting on behalf of thousands and thousands of customers all over the country at any one time. Do you really think you're going to get the best, impartial advice from

them? Particularly when you consider they have a business relationship with the estate agent who doesn't get paid unless the sale goes through.

3. Try to get the contact details of the vendor. If you can speak to the vendor directly you can ensure that the estate agent is passing on accurate information. If you take all of my advice and still have a problem with an estate agent, please remember you can always contact me and my team at [jvsshaw@bbc.co.uk](mailto:jvsshaw@bbc.co.uk)



## fitness 4fun

Get those muscles working! Tone and strengthen arms, legs, bums and tums – you'll look and feel great.

Why not give it a go? Only £5 per week for one hour of fun fitness. Pay-as-you-go, come when you can.

Come along and join our friendly group. Everyone welcome.

No need to book – just show up.

What: Fitness4Fun with Kay  
Where: Edlesborough Memorial Hall  
When: Every Friday, 10:00-11:00 am



# Important Information for Dog Owners and Walkers

The following article has been submitted by kind permission of Dog World and is to give awareness of the dangers to livestock when out walking dogs in the countryside and to draw to the attention to the public that all dog faeces must be picked up when walking in the countryside whatever time of the year it is, as dog faeces can cause abortion in cattle and lead to brain damage and death in sheep. This is an increasing problem in certain parts of the local villages as the vast majority of dog owners are not aware of the problem and assume because it is not on a public area they can just leave it lying around in all its different shapes, colours and sizes. DO NOT LEAVE IT ON GRAZING LAND. BAG IT AND BIN IT SENSIBLY.

✉ Sue Mitchell

## Countryside advice from The Kennel Club and NFU

The Kennel Club and National farmers Union [NFU] have joined forces hoping to make countryside walks safer and more stress free for dogs and farm animals. They have created new footpath signs to encourage responsible dog ownership particularly when around livestock, which were launched at Crufts in March this year and mark a new partnership between the two organisations.

The signs reinforce the year round need to keep dogs on leads when near livestock and emphasise that it is safer to release a dog if threatened by inquisitive cattle, so that the walkers and dogs can get to safety separately.

Recent research carried out by the University of Central Lancashire found that many otherwise responsible owners do not realise the need to pick up dog waste in the countryside or that they

can put the bag in any public waste bin; leaving canine faeces where animals graze can cause cattle to abort their calves and lead to brain damage or death in sheep.

KC secretary Caroline Kisko said “Government figures show that dogs are taken on half of all countryside visits and in the vast majority of cases these walks these walks are problem free for dog walkers and farmers alike. It is important for owners to be aware of the need to put their dog on a lead at certain times and to ALWAYS pick up their dogs waste on farmland to make sure everyone can continue enjoying the countryside safely. We’re proud to be working with the NFU on this new partnership which will help walkers in the countryside make good choices about what they can do with their dogs and we are looking forward to the new signs being well used.”

NFU livestock board chairman, Charles Sercombe, said “The NFU is delighted to partner with the Kennel Club for the first time to encourage responsible dog walking in the countryside.

Now spring is here we tend to see an increase in the number of people walking their dogs, but it is important to remember that farms are working environments so please be aware of your surroundings.

The advice is: if you have a dog with you keep it close by your side and under control. Where there are cows and sheep put it on a short lead. Remember, cows are inquisitive and even more so when calves are at foot so may come and investigate. If you feel threatened walk calmly towards the field boundary and let your dog go to allow it to run to safety.”

# BRAYSCOPE

Experts in commercial & domestic horticulture

For all your **Commercial**  
and **Domestic** landscape  
requirements

**Professional** and **Qualified**  
landscape maintenance and  
**Construction** company



Contact Kevin on

**01525 220948 07949 601630**

[brayscape@aol.com](mailto:brayscape@aol.com)

14 SCHOOL LANE, EATON BRAY BEDFORDSHIRE, LU6 2DT

# Come for Coffee at St Mary's

For a warm  
welcome and a  
cheering cuppa  
on the first  
Saturday each  
month in  
St Mary's Church  
Eaton Bray  
10.00am - midday



Are you an elderly or  
housebound resident ?

Would you enjoy a  
monthly (free delivery) fish  
and chip supper ?



If your answer is 'yes' to either of the above questions then please do get in touch.

We run this scheme on the last Friday of every month but need your orders no less than 48 hours prior to this. We have a voicemail facility on our phone if we are not there to speak to you directly. All messages will be confirmed back to you so you know your order has been received.

Please call on **01525 229 656** to place your order

*Ordinary people doing amazing things*





# EDLESBOROUGH TENNIS CLUB

Website by Jupiterwill

[www.etctennis.org](http://www.etctennis.org)

Play tennis    Have fun    Socialise    Feel good    Join our club

Join via the website, or call Iona McLean-Hall on 01525 220562 for details

Monthly  
draws

## New 100 Club

Spend £2 to  
spend a penny

In aid of toilets and other improvements  
at St Mary's Church, Eaton Bray



Contact: [eatonbraychurch@aol.com](mailto:eatonbraychurch@aol.com) or telephone: 222691

## Eaton Bray Academy

*The staff work exceptionally well as a team to promote children's welfare, learning and development and to make sure everyone enjoys their time at the pre-school.*      Ofsted 2012



*Children benefit from the abundant shared resources, access to school assemblies, the information technology suite and the extensive outdoor facilities.*      Ofsted 2012

### Pre School



**How many Pre Schools do you know that are part of the Main School?** Well, EBA is *one* School!

All the children wear School uniform, have their own book bag, can attend clubs and even eat our delicious School dinners, cooked on the premises by our own School cooks.

.We believe that quality Early Years education is essential; it is on this that everything is built.

We offer a caring, happy, secure and stimulating learning environment in which the children thrive.

**Come and have a look!**

Tel. 01525 220468 or email [admin@eba.ec](mailto:admin@eba.ec)

*Children clearly benefit and thrive as the accommodation, equipment and resources are well suited for their purpose and conducive to learning. Improvements to the premises and the outdoor area give children the confidence to explore and help all aspects of their development.*      Ofsted 2012

# ravencounselling

Teresa Raven, accredited and registered member of the British Association for Counsellors and Psychotherapists (BACP).

Counselling offers you a safe, confidential place to work through difficulties, issues or problems you may be experiencing.

My pricing starts at £15 for an initial consultation, with further sessions priced from £40. Please contact me for more information, or visit my website.



[www.ravencounselling.co.uk](http://www.ravencounselling.co.uk)



[ravencounselling@aol.com](mailto:ravencounselling@aol.com)



07960 090113



[facebook.com/ravencounselling](https://facebook.com/ravencounselling)

**Make your next holiday a *Disney* one!**  
with one of our luxurious villas right on the doorstep



MINUTES FROM DISNEY



CHEAPER THAN A HOTEL



PROFESSIONAL FRIENDLY SERVICE

**PersonalTouch**  
VACATION VILLAS

☎ 0845 5280 162

🌐 [personaltouchvacationvillas.com](http://personaltouchvacationvillas.com)

As former Edlesborough residents; we now own and run a family business in Florida, USA. Let us help make your Disney holiday as **PERFECT** as it can be. Our **private pool villas** (AKA 'home from home'), cater for all your needs and are **within 5 miles of the parks** - the perfect base for your trip.

# Leighton Plumbing & Heating

Oil fired boilers  
service, repairs  
& installations



All other aspects of plumbing  
& heating undertaken

Oftec registered & insured

01525 385250  
07774 567472

11 Woodman Close  
Leighton Buzzard  
Beds  
LU7 3NU

leighton-plumbing@ntlworld.com



Helping Hands  
The Home Care Specialists

Est. 1989

## Do you need a Helping Hand?

Our **local** care team has been providing award winning quality homecare since 1989.

We offer a homecare service **from 30 minutes per week to full-time Live-in Care**, which enables you or your loved one to remain at home with compassion and dignity.

To find out how we can help,  
call: 01296 752 632 or  
visit: [www.helpinghands.co.uk](http://www.helpinghands.co.uk)

 **Stoten Gillam**  
chartered accountants  
chartered tax advisers

99 High Street South  
Dunstable  
LU6 3SF  
Tel: (01582) 608601  
[www.stotengillam.co.uk](http://www.stotengillam.co.uk)

ICAEW CHARTERED ACCOUNTANTS   "Practical Solutions for Growing Businesses" 

  
W Roff Agricultural Services

- Hay & straw for sale
- Paddock maintenance
- Fencing

 07909 680807  
ELSA GE FARM, CHEDDINGTON

Wednesdays  
1pm to 2:30pm  
(During term time)  
Eaton Bray Village Hall  
(Church Lane LU6 2BJ)

**cheeky monkeys** 

under fives play time

£1 per adult/child - Under 1 yr free

creative play 🍌 singing  
stories 🍌 baby corner  
craft 🍌 healthy snack

01582 699092 🍌  
(Beehive Children's Centre)

 Come along,  
make new friends  
and join in  
the Fun!

# Coffee Tavern

Large Hall

£6.00 per hour

Commitee Room

£3.50 per hour

Large Hall &  
Commitee Room

£8.00 per hour



**Bookings 01525 220891**

**Stairlift and access ramp available**

We are a nurse-led home care provider committed to delivering the very highest standards of care.

Support from our dedicated team gives you or your loved one the peace of mind and confidence to be able to continue living at home.

Family-owned and managed, we are independent and do not belong to a national chain or franchise. We are registered with the CQC, number 1-1499072841.



**your own  
home care**  
putting the nursing back into care

To talk to us about your requirements please call Helen Yates RGN on 07920887414 or 01442 843064 or email [helen.yates@yourownhomecare.co.uk](mailto:helen.yates@yourownhomecare.co.uk)



[www.yourownhomecare.co.uk](http://www.yourownhomecare.co.uk)





**Some comments from our recent Ofsted report:**

Children are consistently offered a stimulating range of activities and opportunities which enable them to make good progress towards the Early Learning Goals.

Staff have a good understanding of creating a safe and welcoming environment . . .

Staff support children well and encourage them to be active in their learning and to think critically.

We are a committee run playgroup operating five mornings a week 9:15 – 12:15 for children aged 2 to school age.

**If you would like to find out if your child would be happy here, please phone our Playgroup Leader, Ann Tobin on 07816 358 342.**

[www.dagnallunderfives.co.uk](http://www.dagnallunderfives.co.uk)

# janes

## Electrical Appliances, Bikes & Flooring Store

**The Family Business with 130 years of recommendation**



## Free Delivery & Installation

### On Kitchen Appliances & TV's

within a 15 mile radius (excluding installation on Gas & Built-in Appliances)

## Sound Advice & Peace of Mind

**4-8 High Street, Edlesborough, Dunstable, Beds LU6 2HS**

**Tel: 01525 220208 Fax: 01525 222802**

[www.janesltd.co.uk](http://www.janesltd.co.uk)

# GALRAL SERVICES

AUTOMOTIVE, AGRICULTURAL & PLANT MAINTENANCE

Modern, classic and vintage vehicles; servicing & restoration

Over 40 year's local experience in automotive industry

Agent for BEPCO tractor parts.

Agent for TRS restraint systems (ratchet straps)

Welding & fabrication services (sheet steel & aluminium)

Auto electrical and engineering works

Contact Simon  
**07785 278188**

Fax/answer machine  
**01525 210597**

# GATES

Plumbing & Heating Limited

We'll help meet your heating needs

- Biomass boilers
- Air source heat pumps
- LPG central heating
- Oil and Gas central heating

Please contact us on:

**01296 670445**

**info@gatesheating.co.uk**

**www.gatesheating.co.uk**



We are Gas Safe, OFTEC, NAPIT  
and MCS registered

Government funding for renewables

## Simples Fitness

Fitness classes & individual fitness training

- \* Circuit Training
- \* Cardio Blast
- \* Crazy Abs
- \* Buggy Push
- \* Box-Fit
- \* Ski-Fit

Membership £35 per month or Pay as you go

*Forget the gym...make fitness simples!*

[www.simplesfitness.com](http://www.simplesfitness.com)

## MINI DIGGER WITH DRIVER FOR HIRE

Fully insured ↔ Competitive rates ↔ Based locally  
Aggregates Supplied ↔↔↔↔ Tree Stump Removal

Contact Simon  
**07785 278188**

Fax/answer machine **01525 210597**



**Electrical Services**

[www.rselectricalservices.com](http://www.rselectricalservices.com)



**FULLY QUALIFIED  
ELECTRICAL ENGINEER**

CPS Registered through NICEIC Scheme

Competitive prices and quality service

Available for all your domestic and  
commercial electrical requirements

No job too small

Call Russell Sears:

**07578 008567**

**01525 220008**

17 Good Intent, Edlesborough

# Great Information in One Place with AdviceCentral

A new telephone and web-based service has been launched in Central Bedfordshire offering free, high-quality information and answers to questions for local people.

Its aim is to make getting information easier for people by providing access to a range of organisations and advice services in one place. So, if one agency is booked up or unable to help, such as offering home visits, AdviceCentral can direct residents to another that can without the resident having to make the call themselves.

Sherone Phillips, Service Manager, says: "In just a few days of opening, we have had a wide range of enquiries; from problems with new furniture to what to do about parking fines right up to queries about being homeless and help with benefits. So far we have found the right answers and the right agencies to support all the callers."

AdviceCentral offers access to information by website, online enquiry form and telephone help-line on a wide range of topics such as managing money, issues about housing, help with health and care. People just needing information or self help can get it from the agency's easy-to-use website, freeing up frontline services and charities to give targeted advice.

Julie Ogley, Director of Social Care, Health & Housing at Central Bedfordshire Council, said: "I'm delighted that AdviceCentral is now operating, as it will make it much easier for people to access advice from one place, without having to ring around or visit different agencies.

"We are fortunate to have a range of great advice services in Central Bedfordshire and having another service that can direct residents to the right kind of support is

another step forward."

AdviceCentral is being delivered by five charities: Ampthill and Biggleswade Citizens Advice Bureau, Age UK Bedfordshire, Dunstable and District Citizens Advice Bureau, Leighton Linlade Citizens Advice Bureau and The Disability Resource Centre Bedfordshire.

The service operates from the Disability Resource Centre in Poynters Road, Dunstable, and is staffed by trained volunteers who help with:

- Identifying issues quickly and effectively
- Prioritising calls to ensure that urgent issues are dealt with without delay
- Providing immediate information to answer the caller's issue
- Referring the caller promptly to the most appropriate agency where necessary

AdviceCentral launched early March, and anyone interested in further details or volunteering with the service should contact the service manager by emailing [info@AdviceCentral.org.uk](mailto:info@AdviceCentral.org.uk) or calling 0300 303 6666 or visiting the website <http://advicecentral.org.uk/>

## Eaton Bray Cricket Club 100 Club Winners February 2014

£25 Nick Pearson No.61  
£10 Lynn Alder No.39

## February 2015

£100 Mick Flecknell No.55  
£25 Tracey Beadle No.72  
£10 Jenny Ray No.17

Eaton Bray Cricket Club is kindly sponsored by Meadow Marquees, Houghton Insurance & Gastex Services



# The Norman King

**On the corner of  
Church Street and  
Kingsway, Dunstable**

*Circa 1955*

Around 1106 King Henry I ordered a palace to be built as part of his new town of Dunstable. Made up of a series of 'houses' built around a great courtyard, it stood on a nine-acre site. It was finished in time for him to entertain a large party at Kingsbury in 1109. Both King Henry and later King Stephen used it for a great Christmas Court.

In 1204, King John gave to the Augustinian Priory the site and garden where King Henry I 'once had houses'. The Prior let it out to wealthy wool merchants who could use the out houses as a wool yard. Wool merchant John Durrant was one of the wealthiest men in Bedfordshire but, following his death in 1297, Kingsbury fell into disrepair. However, in 1329, it was repaired for the young King Edward III to host a great tournament.

This tilting-yard type of tournament was probably held in the courtyard.

By 1542, George Cavendish had bought Kingsbury and he was renting 'The Great Croft' between Kingsbury and North Street. This later became known as Walnut Close.

By 1600, Kingsbury was owned by William Marshe, whose family had farmed part of Caddington

and Kensworth. Some of his descendents developed Kingsbury Farm, others became connected with the City of London; their monuments are in the Priory Church. Between them they founded the Ladies Lodge, the Cart and Ashton almshouses and the Chew School. Income from the Ashton Almshouses was used to found the Ashton Schools. William's son, Francis, married Rebecca, of the inn-keeping Briggs family. His grandson, Doctor John Marshe, married Dorothy Wolsley, cousin of the 17th century traveller and writer, Celia Fiennes, who visited her at Kingsbury. It later became a commercial farm but in 1925, local businessman William Bagshawe converted it back to a gentleman's residence. Two years later, he turned the barn, which became The Norman King,

*July 1985*



into the Town Museum; this lasted for 7 years. In 1935, twelve acres of the farm were sold for the Kingscroft Estate. Around 1960, the estate was broken up; one end became the home of Dr. and Mrs Ashton, the other, The Old Palace Lodge Hotel. Flowers Brewery

bought the barn and, using contemporary materials, they enlarged it and, in October 1961, opened The Norman King. The Norman King was devastated by

fire on 10th August 2011, and remains in a derelict state and is likely to be demolished.

*After the fire in 2011*



Edlesborough W.I. celebrated two events in February. The first was a talk by Paul Rabbitts on 'British Parks'. Paul, an enthusiastic speaker, certainly knew his subject, which he appeared to live and breathe. As Head of Parks and Streets at Watford as his day job and public speaking on the subject in the evenings plus being an author of seven books on the subjects of Parks and Bandstands, Paul's exuberance was certainly felt and appreciated by his audience.

The importance of parks was the introduction to an evening which flew by. We heard how, with cities and towns spreading out everywhere, parks became the equivalent of the countryside. The Victorian period was the most popular with shelters, palm houses and bandstands with brass band concerts, springing up everywhere.

The idea of parkland originally came from the ancient Egyptians and the Romans. During the sixteenth century, English royalty implemented the idea and certain areas were used solely as their hunting grounds. St. James's Park was the first such park for King Henry V111. This was followed by Hyde Park (later known as the People's Park), Marylebone (later became known as Regents Park) and Kensington Gardens. Hyde Park changed over time. Gallows were originally placed there and on one day sixteen people were hanged. Fortunately Hyde Park is now more famous for its Speakers' Corner and freedom of speech.

Industrialisation made great strides during the latter part of the nineteenth century and the beginning of the twentieth century, making town environments very unhealthy with billowing smoke and fumes dominating the atmosphere. Added to which people were subjected to living in dirty, overcrowded housing conditions. As a consequence, in

1878, the Public Health Act was passed and the first public park came into existence. Hyde Park no longer was the property of the monarch but became public property. There followed throughout Britain, in nearly all cities and large towns, the opening of many parks.

The public parks were greatly appreciated by the British people because by 1911, 80% of England's population lived in towns. Open, clean spaces represented a different world to the cities' inhabitants. By the twentieth century The National Playing Fields Association was established and the London County Council (L.C.C.) employed 320 park keepers.

What in particular made the parks so successful? According to Mr. Rabbitts, the shelters and refreshment rooms were of stunning design, the lodges reflected the style of the times, palm houses were magnificent and grew exotic plants. Enormous clocks and fountains, wonderful gates, drinking fountains, war memorials, statues and sun dials were erected. There were bandstands, where on one occasion it was understood 50,000 people listened to a concert of brass bands. There were play areas with swings and paddling pools. The maintenance of the parks was superb and floral designs of clocks, crowns and even chairs took pride of place.

Sadly circumstances changed towards the middle of the last century when, in some parks, buildings were boarded up or became derelict. However, with the arrival of the National Lottery a few decades later, increased funding and enthusiasm helped to bring parks back to their former glory including new facilities such as shops, classrooms and teaching spaces.

Edlesborough W.I. also held a very successful coffee morning on 12th February,

when £163.52 was raised. Thirty two visitors, members and non-members, attended the occasion. Our appreciation goes to Maureen for hosting the event and to Maureen, Pauline, Kathy and Elizabeth for producing delicious scones and cakes. We

also say thank you to Val who worked hard pricing the items on the Bring and Buy stall and, for overseeing the event with a calm eye and helping hand, our president, Jenny.

✍️ Jackie Flint

## Edlesborough Book Group



### Various Collections of Short Stories by H. E Bates

Herbert Ernest Bates was born in Northamptonshire in 1905 and his first novel was *The Two Sisters*, which was published in 1926. A prolific writer, he wrote many novels and was particularly skilled at short story writing. During World War Two he was a commissioned R A F officer and continued writing, but under the pseudonym of 'Flying Officer X'. *Fair Stood the Wind for France* is the most famous of these. After the war, his novels were often based in Burma and India, drawn from his travels there. In contrast, he wrote love stories of which 'Love for Lydia' is a good example and he created wonderfully eccentric characters such as Uncle Silas and Sid Larkin. These stories were televised bringing his name to a wider public, although the fame was posthumous, he having died in 1974.

The book group had not read any short stories for a while and we chose to read our own choice of a collection of H.E.Bates's stories. He had over twenty collections published in his lifetime, so there were lots from which to choose. One, which I read was entitled 'Seven by Five', containing thirty five stories, the first written in 1926, finishing with a story from 1961, giving us the title. The stories were chosen by the author himself, as he believed they gave a good representation of his skill as a short story writer. He left out any wartime stories written under his pseudonym and also the uncle Silas stories, believing them to fit into separate categories.

I enjoyed the stories in this book very much. The subject matter was varied the descriptive passages of the countryside and the changing patterns of the seasons were superb. There were similarities in many of the stories' main characters, themes of loneliness and introversion although they were well written and constructed. I thought as I read the different stories, that although they had been written a long time ago, because of the emphasis on the countryside and the flora and fauna, they had not dated as some of the older books that we have read. It is difficult to review the books this month as we all chose different versions. However, the considered opinion of all those at the meeting was that they enjoyed the stories and all thought that the descriptive writing was excellent.



### Dunstable & District Local History Society

**Tuesday 14 April, 7.45pm**  
**The Battle of Waterloo**

Almost exactly 200 years ago, the Duke of Wellington galloped from a ball in Brussels to lead his troops against an invading army led by Napoleon. The fierce battle near the village of Waterloo raged all day. Paul Chamberlain describes the brutal clash.

**Methodist Church Hall, Dunstable**  
**Visitors always welcome £2**

# Dagnall Weather Station (AONB)

## Weather Conditions for February 2015

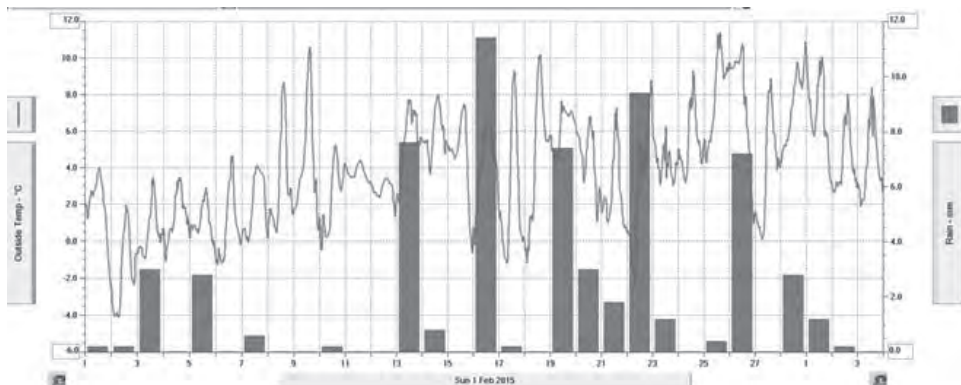


Elevation: 450 ft - Latitude: 51° 50' 13" North - Longitude: 0° 33' 34" West

We started the month with a cold patch for about 7 days recording the lowest temperature of -4.2°C on the 2nd. The second week was dryer and warmer; the third week was and unsettled with the winds bringing rain. By the end of the month the temperatures were higher and no frost in the mornings, but the wind chill effect from the stronger winds wind made it feel chilly. February had average rain fall, colder than January we recorded 13 days when the temperature dropped below zero.

	High	Date/Time	Low	Date/Time
Temperature:	12.4°C	25 Feb 13.30	-4.2°C	2 Feb 07.30
Mean Temperature	3.7°C			
Dewpoint:	10.0°C	26 Feb 12.00	-5.7°C	2 Feb 03.00
Humidity:	97%	23 Feb 04.30	58%	24 Feb 15.00
Barometer:	1040.5 mb	17 Feb 23.00	988.7 mb	22 Feb 22.00
Wind Speed	46 mph S	22 Feb 17.00	Months avg.	5.9 mph
Wind Chill:	11.4°C	25 Feb 15.30	-6.0°C	2 Feb 07.30
Dominant Wind:	NW			
<b>Rainfall</b> *T= total rain days and moisture. R= Actual rain				
*Rain Days: 18(T), 16(R)	Wettest Day 16 Feb		11.40 mm	0.448ins
Monthly Rain:	Total	February 2015	62.2 mm	2.45 ins
Yearly Rain:	Total	1 Month	132.4 mm	5.12 ins

Chart shows the temperature and rain for the month



For weather data 24 hours a day, updated every 15 mins, visit: [www.dagnallweather.co.uk](http://www.dagnallweather.co.uk) and [http://bit.ly/weather\\_dagnall](http://bit.ly/weather_dagnall) this site forecast and much more

If anyone has a question, comment or wishes to contact me please email: [david@dagnallweather.co.uk](mailto:david@dagnallweather.co.uk) or telephone: 01442 843883

Dagnall weather now has an app for your ipad & iphone! Just go to the apple store, search for Wunderstation and follow the instructions to Dagnall Weather Station. Now updated every minute.



# **VE Day Fun Day**



**supporting Beacon Villages Library**

**Saturday 9<sup>th</sup> May 2015**

**2.30 – 5pm**

**Orchard Farm**

**Cheddington Road, Pitstone.**



**Vintage stalls, White Elephant, Plant stall, Tombola, Children's 1945  
Fancy Dress competition and Treasure Hunt, Cream Teas and lots  
more.....**

**For more details or if you would like to have a stall, please ring Sue Groves  
on 01296 661417 or contact Michelle at the Library.**

# Salvation Sound



Eastertide - Palm Sunday - Good Friday - Easter Day - Daffodils - Rabbits  
- Eggs - Holidays !!! What does it mean to you?

Palm Sunday - Jesus entered Jerusalem to the acclaim of the crowds. They were soon to change their tune!!

Good Friday - Jesus hung on the cross. Passers by hurled insults at him; words of mockery and derision added to his suffering.

Easter Day - He had been laid, limp and lifeless in a tomb, a stone rolled across the entrance. Humanly speaking, it was over. The end of a wonderful ministry and an unforgettable man. Yet defeat turned into victory - the tomb was empty.

Can it be true that Jesus lived and died and rose again? Most people have no problems with the first two of those - that he lived and died - but when it comes to the resurrection it's quite a different matter. We are not used to news like that. It's the stuff of daydreams, foolish fantasy. The disciples too thought that way. Yet each one came not just to believe but to know that he was alive and with them again through his spirit.

Too good to be true? Read all about it; in the gospel of Luke chapters 23-24. The wonder of Easter is that we can hear its message again and again yet it is as true and as relevant today as it was all those years ago and it will continue to be that way ad infinitum. Why? Because it continues to change lives, offering hope to believers across the world.

Do we sometimes get lost when trying to make sense of the mystery of God and faith? Perhaps we should not agonise over problems and questions so much, we just complicate things by doing so. "No one has ever seen God; but he who is close to his heart his one and only son, has made him known." John 1 v 18.

Patience Strong wrote:

"All things are turning towards the light, deep in the earth's dark tomb - The trees are bright with selling buds - their gay green banners furled - There is no death - the city rings out across the grieving world... The Christian faith is pinned upon this mighty glorious fact - We human creatures live our lives by fear and torments racked - And yet each Eastertide the Truth is brought to us again - The Truth that is the answer to our doubting and our pain...He rose again - He came to life - and thus set all men free -

Death is a dream from which we wake to immortality.

✍Maureen



## The Salvation Army, Booth Place, Eaton Bray Weekly Activities



### Sunday

Footprints (Sunday School)	9.45-10.45am
Morning Worship	11am
Songs of Praise	4pm
(3rd Sunday of the month from May to Dec)	

### Tuesday

Coffee Morning (alternate weeks)	10-11.30am
Music practices (all welcome)	7.30-9pm

### Wednesday

Home League (Ladies Mtg but all welcome)	2.30-3.30pm
Champions Challenge Club (term time) (Ages 5-10 years)	5.45-6.45pm

### Thursday

Parent and Toddler Group (Term time)	9.30-11.30am
Haberdashers' night 2nd Thursday of month	7.45 pm
Ladies Fellowship (Last week of month)	7.45pm

For further details please call Envoy Hilary  
01525 222087 / 07932 057490

E: [hilary.chadwick@salvationarmy.org.uk](mailto:hilary.chadwick@salvationarmy.org.uk)  
W: [www.salvationarmy.org.uk/eatonbray](http://www.salvationarmy.org.uk/eatonbray)



# Premier Garage Doors & Gates



## Quality Garage Doors

- ✓ Superb choice of designs in metal, wood and fibreglass
- ✓ Any size door made to your requirements
- ✓ Large selection of spares & fast repair service available
- ✓ New or existing doors converted to automatic
- ✓ Professionally fitted by own expert craftsmen
- ✓ Prompt free estimates & advice
- ✓ We cover all areas



**(EST 1984)**

DIY kits available  
Insurance work welcome  
Council approved  
Remote control gates also available



Unit 7, Sparrow Hall Farm, Leighton Road, Edlesborough LU6 2ES

**01525 220212**

**[www.premiergaragedoors.co.uk](http://www.premiergaragedoors.co.uk)**

**B i K E**



**SALE**

**@janes**

Selected Bikes up to

**50% off**



**Electric Bikes**

**Adult & Kiddie Bikes**

**Mountain, Hybrid Bikes**

**BMX & JUMP BIKES**

**All our bikes are built, road tested & ready to ride**

4-6 High Street, Edlesborough, Dunstable, Beds LU6 2HP

Tel: 01525 220208

[www.janesltd.co.uk](http://www.janesltd.co.uk)

