



# FOCUS

November 2014



The local village magazine just for Us!  
Eaton Bray, Edlesborough, Northall & Dagnall

# *The White Horse Inn At Eaton Bray*



Market Square  
Eaton Bray  
Beds  
LU6 2DG  
01525 220 231  
[www.thewhitehorseatonbray.co.uk](http://www.thewhitehorseatonbray.co.uk)



**Midweek Six pound lunch**  
**Monday to Friday 11.30am til 2.30pm**  
**Great traditional pub dishes for £6**

**November Special offer**  
**Monday to Thursday Evenings**  
**Pay half price for house wine**  
**when four people eat main courses**  
*(can not be used with any other offer)*



**Menus now available for  
December Christmas  
parties  
and  
Christmas day**



# Focus Magazine Committee

**Joint Editor:** George Crutcher

7 Summerleys, Edlesborough 221637

**Email:** [george.crutcher@tiscali.co.uk](mailto:george.crutcher@tiscali.co.uk)

**Joint Editor:** Sally Siddons

34 Wallace Drive, Eaton Bray 221733

**Email:** [sallysid@hotmail.com](mailto:sallysid@hotmail.com)

**Dagnall Representative:** Sue Cawdell

10 Deans Meadow, Dagnall 01442 842200

**Circulation Manager:** John Plater

41 Church Lane, Eaton Bray 221095

**Treasurer/Leaflet Enquiries:** Ken Coates

10 The Nurseries, Eaton Bray 220868

**Advertising:** Sally Siddons

34 Wallace Drive, Eaton Bray 221733

**Design and Layout:** Tracey Moren

(Moren Associates Limited) 01525 229695

**Printed by:** Priors Press

Dunstable 01582 699851

Copy for publication to the Editors or one of the following by the **10th of the month:**

Kevin Cabbage

'Larums', Eaton Bray Road, Northall

Val Barrow

3 Chestnut Close, Dagnall

*Focus accepts no responsibility as to the accuracy or content of any advertising or articles published in 'this' magazine neither do they reflect the opinion of members of the Committee.*

© Articles published in Focus may not be reproduced without permission.

**December Focus will be a joint issue for December & January. Don't forget to send in your December & January entries by 10th November**

## Kindly Note

If the event you wish to advertise falls in the first week of the month, it is advisable to get the details into Focus a month earlier. The magazines are not delivered from the printers until the first of the month, therefore it takes a few days for them all to be circulated throughout the village.

✉ Editors

## Village Hall Bookings

To book your local village hall for an event please contact the following:

**Northall:** Lorna Cabbage Tel: 01525 220361

**Eaton Bray:** Norman Lee Tel: 01525 222831

**Dagnall:** Elizabeth Coates Tel: 01442 842550

**Edlesborough Memorial Hall:** Penny Pataky, Tel: 01525 229358

## Police Contact Numbers...

*making neighbourhoods safer together*

**General Assistance (Recommended Number): 101      Emergency: 999**

**Bedfordshire Police (Eaton Bray)**

Leighton Buzzard Police Station/Kathryn Horgan: 01582 473418

Typetalk: 18001 01582 473418

Email: [LPT.LeightonRural@bedfordshire.pnn.police.uk](mailto:LPT.LeightonRural@bedfordshire.pnn.police.uk)

**Thames Valley Police (Edlesborough, Dagnall & Northall)**

PCSO Jackie Dodson Mobile: 07800 703 524

Email: [NHPT@thamesvalley.pnn.police.uk](mailto:NHPT@thamesvalley.pnn.police.uk)

# Village Diary November 2014



## Weekly

Mon-Fri (term time)	Eaton Bray Pre-school, Eaton Bray Lower School, 01525 220468
Mon-Fri (term time)	Dagnall Under 5's, Dagnall Village Hall, 9.15am - 12.15pm, Mrs Ann Tobin 07816 358342
Mon-Fri (term time)	Edlesborough Pre-School, Edlesborough School, 01525 220431 manager@edlesborough.bucks.sch.uk
Mon-Thu (term time)	Totternhoe Pre-school, mornings, Totternhoe Lower School, Michelle Urbanowicz on 01582 668841
Mondays	Pilates, 10.45am, St.Giles Church Hall, Totternhoe, Lisa: 07799 893489
Mondays (term time)	2nd Eaton Bray Brownies, girls 7-10 years, Edlesborough Memorial Hall, 6 - 7.30pm, Contact Sandra Counsell 07979 521900
Mondays	Dagnall Community Choir, All Saints Church 7.45 – 9.45pm
Mondays	Weight Watchers, 7pm, Eaton Bray Village Hall
Mondays (term time)	Movement and exercise classes with a dance flavour, Northall Village hall 2-3.30. Contact Jan 01442 864271.
Mondays	Curtain Call Youth Theatre 5-7.30pm, Eaton Bray Village Hall, Gavyn 01525 220525
Mondays	Curtain Call Theatre Group - 7:30-10:30pm Eaton Bray Village Hall, Sheila - sdtwinkletoes@yahoo.co.uk
Mondays	KFPA ISTD Classical Ballet classes, 3+yrs, 4.15pm, Edlesbrough Memorial Hall, www.kfpa.co.uk
Tuesdays	Line Dancing, 1.30-3p.m., Eaton Bray Village Hall, Lyn Stubbs 220731
Tuesdays	Pilates, 10-11am, Eaton Bray Village Hall, Nicky Roussou 07861 162680
Tuesdays	Totternhoe Baby & Toddler Group, 9.30-11.30am, St. Giles Church Hall, Ruth Allen, 01525 222468 or 07796 265174 or email ruthallen002@gmail.com
Tuesdays	Northall Baby & Toddler Group, 9:30-11:30am, (open in the Summer School Holidays) Northall Village Hall, Stacey Richmond 01525 222999/07957 607592
Tuesdays	Tap & Ballet Classes, JoAnn Latus School of Dance, 4-8pm, Eaton Bray Village Hall, 01582 620576
Tuesdays	Circuit Training - Edlesborough School Hall, 7-8pm - www.simplesfitness.com
Tuesdays	Coffee Morning, Bring & Buy, Table Top Sale, 10-12noon, Salvation Army Hall, Booth Place, Eaton Bray
Fortnightly	Cheeky Monkeys Under 5's playtime, 1pm - 2.45pm, Eaton Bray Village Hall, contact Rachel on 07789 760007
Weds (term time)	Pilates, 7.15pm, Northall Village Hall, Lisa: 07799 893489
Wednesdays	Egyptian Dance Class, 7.30-8.45pm at Eaton Bray Village Hall. Contact: Soraya on 07976 964316 for more details
Wednesdays	Northall & District Age Concern Wednesday Club, 10am - 3pm, Northall Village Hall, Contact Anna 221996
Wednesdays	Dynamic Yoga 6.30-7.30pm £5 Eaton Bray Coffee Tavern Keira 07936 693696
Thursdays	Yoga, Northall Village Hall, 11.30am-1pm 01525 377542
Thursdays	Baby & Toddler Group, Salvation Army Hall, Booth Place, Eaton Bray, 9.30-11.30am
Thursdays	Keep Fit, Edlesborough School, 8pm Tel: 01582 668735
Thursdays	Jazzercise, 9.30-10.30am, Eaton Bray Village Hall, Angela Veryard, 01525 715208
Thursdays	KFPA Street dance classes 4+yrs 4pm, Edlesborough Memorial Hall, www.kfpa.co.uk
Thursdays	Central Bedfordshire Children's Centres' Toy Library, 9-9.45am, Eaton Bray (School Lane) Public Car Park
Fortnightly	
Fridays	Keep Fit class, Edlesborough Mermorial Hall 10 - 11am
Fridays	Tap & Ballet Classes, JoAnn Latus School of Dance, 4-8pm, Eaton Bray Village Hall, 01582 620576
Fridays (term time)	10am-11.30am "Little Luvvies" baby ballet classes. Contact Emma Whittemore on 01525 376124

# Village Diary November 2014



- Saturdays Jazzercise, 9.30-10.30am, Eaton Bray Village Hall, Angela Veryard, 01525 715208
- Saturdays Drama Class for Children, 10.35am-12.35pm, Eaton Bray Village Hall, Claire Casey, 07792 508591
- Saturdays KFPA Musical Theatre classes 4+yrs www.kfpa.co.uk, 10am, Edlesborough Memorial Hall
- Sundays Grace Baptist Church (by the Post Office) Worship Service 11am-12pm. All welcome. Barry 01525 229610 or Peter 01525 221048.

## Monthly

- 1st Monday Eaton Bray Parish Council Meeting, 7.30pm, The Coffee Tavern
- 1st Monday Eaton Bray W.I. Meeting, 7.30pm. Eaton Bray Methodist Church Hall. Contact Barbara Collier on 01525 221401
- 1st & 3rd Tuesday Dunstable & District Orbit (social and charitable) Club meet at Dunstable Rugby Club at 8pm. For details contact 01525 222441 or 01582 755147
- 1st Saturday St. Mary's church, Eaton Bray Coffee Morning & Plant Sale, 10am - 12 noon
- 1st Sunday May to September, St Mary's Church, Edlesborough Open Day, 2-5pm
- 2nd & 4th Tuesday TOTS, St Mary's, Eaton Bray, 2pm
- 2nd Tuesday Dunstable & District Local History Society meeting, 7.45pm, Methodist Church Hall, Dunstable (opposite Wilkinson)
- 2nd Tuesday Edlesborough W.I. Meeting, 7.30 pm, Edlesborough Memorial Hall
- 2nd Wednesday St. Mary's Ladies Guild, 2pm, St. Mary's, Eaton Bray
- 2nd Wednesday Eaton Bray & Edlesborough Lions Club, 7.30pm, The Coffee Tavern
- 2nd Thursday CAMEO Coffee, tea & chat, 10am-12noon, Edlesborough Methodist Church
- 2nd Saturday Workshops Dynamic Yoga 9.30-11am £10 Eaton Bray Coffee Tavern Keira 07936 693696
- 3rd Thursday Edlesborough Parish Council Meeting, 7.30pm, Memorial Hall
- 3rd Sunday Lunch club 11.30 to 2.00pm, Eaton Bray Village Hall, Chris Hewitt 222288
- Last Saturday Coffee Morning, 10-12 noon, Edlesborough Methodist Church

## Other Regular Events

- 2nd Beds Area Narrow Gauge Model Railway Club Meeting, 11.30am-4.30pm, Eaton Bray Village Hall
- 8th Cafe Community, 11am-1pm, Eaton Bray Methodist Church
- 14th Leukemia Research Coffee Morning, 2 Dunstable Road, Dagnall 10.30 am. All welcome.
- 18th Dagnall Over 60's Hugh Grainger talk about "The Great Train Robbery", followed by tea, raffle and chat
- 24th ELF walk from Eaton Bray Church 10am

## One Off/Annual/Irregular Events

- 7th Concert at St Mary's church, Studham, Tickets £12, 07791 110313
- 8th 1st Totternhoe Scout Group & Brownies and 4th Dunstable Guides Jumble Sale, 11am-2pm, Dunstable Methodist church
- 8th Poppy Prom, St Mary's church Eaton Bray, 7:30pm, Box Office 01525 222283
- 13-15th Front Row Theatre Group production of The Cemetery Club, 7:30, Eaton Bray Village Hall, Box Office: 01525 222283
- 15th St Mary's Christmas Fair, 12-3pm, Eaton Bray Village Hall
- 15th Appledown's Rock 'n' Roll Night, 7:30, British Legion Club, Heath & Reach, Leighton Buzzard. Tickets £10
- 22nd 1st Eaton Bray & Edlesborough Scout Group Table Top Sale, High Street Edlesborough, 1:30 - 3:30pm
- 27th ELF Sherry & Mince Pies, 10:30, The Coffee Tavern
- 28-30th Town Farm Art Show, 10am-5pm, 6 Town Farm, Cheddington, LU7 0TT

# Village Diary November 2014



29th  
29th  
30th

Eaton Bray Academy Christmas Fayre, 12-3pm  
Steam in Beds Model Railway Show, 10am-4:30pm, Eaton Bray Village Hall  
Kids in Action Children's Charity Christmas Craft Fayre, 10am-4pm, Unit 26,  
Apex Business Centre, Boscombe Road, Dunstable, LU5 4SB



## EDaN Community Transport

Peter Williams: 01442 842506

### FOCUS DISTRIBUTORS

Focus magazine will shortly require more distributors to cover part of Eaton Bray High St (between School Lane and Moor End, 18 even numbers, 14 odds) and Eaton Park (19 houses).

In the New Year we need to find someone (or two) to cover Wellhead, which is part of Eaton Bray. A car would be needed. (the previous distributor is 'retiring' after 30 years service)

If you can help in any way, please contact John Plater 221095 for more information. Thank you.

## Eaton Bray 12th Beer Festival

Friday June 5th and Saturday 6th 2015

A little bird said to me, "I hear you are not running the beer festival next year", well I can assure you all we are and have already booked the hall got the music and family entertainers organised, so we are raring to go. Oh and most importantly have spoken with Roy Chatto and his merry band of helpers who will, as usual sort out the beers etc. We have also returned to our preferred date of the first weekend in June. This should make it easy for everyone to remember.

Put the date in your diary and get ready for an even better, if not necessarily bigger event next year. The reason for that is, that we cannot get any more Beer, Cider or Perry into the hall but then the good news is that we did not sell out this year, which

meant we had a good Saturday evening which everybody enjoyed. And that, my friends is why we all carry on as it is such great fun. So see you all then.

When you read this article (probably too strong a word) we will have held our October Quiz on the 18th. I am sure we will have all been flummoxed by some of Keith's questions but again you feel is great satisfaction when you get one or two right, well I do! Again our next one will be in April, the 18th to be exact.

If you have any queries or want help at the Beer Festival just let me know.

✍️ Ross

Tel. 221411

Email: ross.bagni@btinternet.com

# Poppies at the Tower of London

The picture on the front of this November issue of Focus was taken on the 12th August this year and shows the start of the installation of ceramic poppies at the Tower of London. Volunteers began setting them in the moat of the Tower on the 5th August – exactly 100 years after the start of the First World War. They will finish installing them on the 11th November – Armistice Day. Each poppy represents a British fatality in the First World War.

The whole installation is entitled “Blood Swept Lands and Seas of Red” and all profits from it will go to six charities associated with our country’s armed forces. One of these six is the Royal British Legion, the organisation charged with maintaining national remembrance of our armed forces who have been killed in action and support for those who have been injured in action, both physically and mentally. You can buy these poppies when the installation is removed and this is where the profit will come from.

Remembrance is what it says – a time for remembering. This year remembrance has

a special significance that I’m sure you are aware of. 100 years ago the whole world was a very different place and many of the poppies in the moat of the Tower represent a volunteer, someone who made their own choice to get involved and paid for it with their life. By wearing a poppy during remembrance we are not celebrating what started 100 years ago, we are remembering and honouring every single one of our countrymen and women killed or injured in all conflicts since 1914.

I hope that this year when you see Poppies being offered on the counter, or when a volunteer collector knocks on your door, that you will gladly put some money in the box and wear your poppy with even more pride.

✍ Roger Wilkinson (Poppy Appeal Organiser, Eaton Bray)



## Concert

**St Marys Church, Studham  
Friday 7 November  
7:30pm**

**Piano & Guitar Recital  
with post-performance reception  
by The Arthesis Duo  
Dario van Gammeren &  
Maurizio Stefania**

**Tickets £12  
Proceeds will aid Royal British Legion**

**More information:  
[www.dariovangammeren.com](http://www.dariovangammeren.com)  
or 07791 110313**

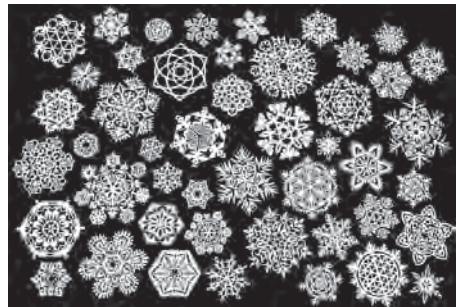
# Paper Snowflakes

Paper snowflakes are fun to make and each one is different! They look great stuck on a wall, strung together in front of a window or placed over coloured gift wrap as present toppers. You can also stick a small one on a dark-coloured card to make handmade Christmas cards. To make paper snowflakes you'll need plain white paper & scissors. These instructions are for 6 pointed snowflakes



Instructions:

- Cut the paper into a square by folding a corner into a triangle and cutting off the excess rectangle. The leftover strip can be used to make smaller snowflakes.
- Fold the triangle in half to make a smaller triangle.
- Keep the 'open' end of the triangle to the left and the main fold on your right. Then visually divide the triangle into thirds. Fold the right-hand side down so the bottom right corner is poking down below the bottom of the triangle.
- Fold the left hand side over on top of the other side so it resembles an arrow head.
- Turn it over to reveal a straight line across the top of the smaller triangles. Cut along this line to even it off.
- Cut shapes into both sides of the triangle and unfold to reveal your shape



## Services at St Mary's Church

**SUNDAYS :**    **8.00am**    HOLY COMMUNION  
                      **10.00am**    PARISH SUNG HOLY COMMUNION

**On Third Sunday of each month:**

**10.00am** – WORSHIP FOR EVERYONE a shorter, less formal service for families. (For anyone wishing to attend a service where Holy Communion is offered, there is a Family Communion at 10.30am at All Saints' Church, Dagnall, where visitors are assured of a warm welcome).

**WEEK-DAYS:**

**Tuesday: 2.00pm**    TOTS (Tots on Tuesdays) (2nd & 4th Tuesdays)  
**Wednesday: 10.00am**    Holy Communion

*EVERYONE WELCOME AT THESE SERVICES*



# A Letter from Rev'd Coralie

**Vicar: Coralie McCluskey**

**The Vicarage, 11 High Street, Eaton Bray - Tel: 01525 220261**

**Honorary Assistant Priest: Revd John Heffer**

**Reader: Gordon Gray (220136)**

**Church Warden: Catherine Hayden (220527)**

**Parish Administrator: Elisabeth Ryder (07799 494972)**

**Web contact: [eatonbraychurch@aol.com](mailto:eatonbraychurch@aol.com)**



*“The bullet came to a halt at Isaiah 49v.8, which reads, ‘I will preserve thee’”. George wrote to his undoubtedly stunned parents, “may this be true of future days until I see you all again is my heartfelt prayer”. George’s prayer was answered. He survived the war and went on to put his faith into practice, becoming a translator for the Bible society.*

When war broke out in 1914 every member of the British Armed Forces was given a New Testament as an essential part of their kit. The Bible Society, with the help of its readers, has discovered amazing stories of how soldiers came to rely on the Bible they were given. There are many poignant stories from the Battle of the Somme of bodies being recovered from shell holes of men who died with a New Testament in their hands.

Walter Young, a 25 year old Post Office sorter, spent four years in France and Belgium before he was captured and put to work in a Prussian coal mine. He felt that God was speaking to him and was granted permission to hold a church service. He held services in the ablutions room where the men washed on leaving the mine. Even today his New Testament falls open at Romans 12, it reads, *‘hate what is evil, hold onto what is good... Let your hope keep you joyful, be patient in your troubles and pray at all times...Ask God to bless those who persecute you – yes, ask him to bless not curse.’*

Dr Michael Snape, Reader in Religion, War and Society at the University of Birmingham suggests that soldiers were happy to have something sacred with them in the hope it might stop bullets and that *‘it also connected soldiers with their loved ones emotionally and devotionally as they may have agreed to read the same texts’*. He adds that many soldiers saw their own sacrifice through their reading of Christ’s sacrifice. *‘It was consoling [for soldiers] to feel that you were taking up your cross. There was an idea of purposeful suffering.’*

In 1914 Britain was a very different place. The Bible was part of everyday life. Knowledge of it meant that you were considered both respectable and educated. Many people had a working knowledge of the Bible. Today the Bible is a take it or leave book but its influence in Western culture is immeasurable although few of us know much about it. It is packed with great characters and exciting stories and is still the world’s most widely distributed and read book.

## **Remembrance Sunday**

On Sunday 9th November at 10.50am we gather at the Eaton Bray War Memorial to remember those who died in the two world wars and more recent conflicts.

*Coralie*



# New Street Lights in Edlesborough, Dagnall and Northall

Edlesborough Parish Council owns and manages a total of 143 street lights in the parish. Many of these are very old and the subsequent repairs are costing over £5,000 per year. The cost of the electricity is currently £4,400 per year. Both of these costs are forecast to increase by much more than inflation in the future. Other local parish councils are also being confronted by similar challenges.

Accordingly, the Council has been working with a consortium of seven other local parish councils to investigate changing over to LED lights. The consortium's total potential purchases have enabled a very competitive offer to be obtained from a manufacturer and installer - including a warranty against any light failures for the first 6 years. In fact, Phillips, the manufacturer of the LEDs, predict a life of over 25 years for each LED. Each new light would have a total of 12 LEDs. As a light is only considered to have failed if two or more LEDs have failed, it is unlikely that many lights will have to be repaired in the future.

The subsequent elimination of repair costs for at least six years, together with the very significant savings in electricity, have convinced all eight parish councils to invest in LEDs. Some of these electricity savings will be achieved by the software driver in each light being programmed to either switch-off, or be dimmed, during the night. There are also some non-financial benefits such as being 'dark sky friendly' and the use of various lenses to project the light where it's required on the pavement.

Subject to some further trials, the Council has agreed a rolling programme to replace

all its street lights with LED over the next two years. The total cost of this project will be about £43,500 which will be funded by the sinking fund which has recently been started, and by switching monies earmarked for some other, less priority, projects. The total projected annual savings of some £8,000 per year will therefore provide a payback in less than 6 years.

Progress reports and further information on this project will be given in future editions of 'Focus' and in the Minutes of Parish Council meetings which can be viewed on the website.

Turning now to our existing street lights. Several failed lights have been reported to the technician for repairs. Please remember to report any faulty streetlights to the Clerk on 01525 22938 or clerk@edlesborough-pc.gov.uk or via our Facebook page NOT AVDC or Bucks CC.

## **NORTHALL BAPTIST CHAPEL**

**Chapel Lane, Northall**

(just beyond the 30 speed limit signs on the road towards Leighton Buzzard)

Everyone is welcome to our Sunday worship each week between 11am and 12.30pm including tea/coffee and time to talk together.

For more information contact:

John Hazell 01525 218142

Email northallchapel@btinternet.com

There has been a Baptist Chapel in Northall for more than 200 years. Today we continue to seek to worship God, serve him in our daily lives and support and encourage one another in the difficult and the joyful times.



# UNICORN WINDOWS LTD

“WHERE QUALITY & SERVICE ARE NOT A MYTH”

[www.unicornwindows.co.uk](http://www.unicornwindows.co.uk)

**Tel: 01525 854272**



Unit 3 Youngs Industrial Estate, Stanbridge Road, Leighton Buzzard

**comput@mation**  
computer support & services

## Computer Support for Business & Home

### Problem Solving:

Virus & Spyware Removal  
Internet & Email Assistance  
Fault Diagnostics  
Repairs & Upgrades  
Slow Running PC's

### Sales:

Desktops, Laptops & Tablets  
Printers & Peripherals  
Software

### Services:

PC, Mac & Linux Support  
Wired & Wireless Networks  
Data Recovery  
Install & Set-up  
Health Checks

On-site Visits:  
Office Hours & Evenings  
by appointment

For friendly advice call John Wallace: 07968 536068 or 01525 261381  
Email: [john@computamtion.co.uk](mailto:john@computamtion.co.uk)  
Web: [www.computamtion.co.uk](http://www.computamtion.co.uk)

Computamtion Services Ltd - Est.1999 with over 25 years experience  
9a Lower Way, Great Brickhill, Buckinghamshire, MK17 9AG

# Carpet & Upholstery Cleaning

**Professional & Local**

**All work guaranteed - not happy, don't pay**

**Powerful equipment means drier much quicker than other methods**

**100% Guaranteed no chemicals left in carpet when dry therefore will not easily resoil & perfectly safe for children & pets**

**Recommendations account for 90% of my work**

**Absolutely no hard sell**

**Telephone Colin for a Free Quote**

**DEEP-CLEAN**

**01525 851 811**

**[www.deep-cleaners.co.uk](http://www.deep-cleaners.co.uk)**

**Email: [colin@deep-cleaners.co.uk](mailto:colin@deep-cleaners.co.uk)**

## **EDLESBOROUGH SURGERY**

**11 Cow Lane Edlesborough**

**Enquiries - 01525 221630 Appointments - 01525 220333**

**[www.edlesboroughsurgery.co.uk](http://www.edlesboroughsurgery.co.uk)**

**Dr J R Bell, Dr Tisha Patel**

**Dr Stephanie Johnston, Dr Kirsten Riemer, Dr Heather Counsell**

**Friendly village Practice offering a wide range of health services including coils/implants, minor surgery, travel advice, in house blood tests, on-line appointments and repeat prescription ordering. Four Nurse Practitioners offering acute clinics with same day appointments. Also, midwife, health visitors in attendance. Local District Nurse Service.**

**Long established training Practice with a rotation of qualified doctors.**

## **EDLESBOROUGH PHARMACY 01525 223181**

**Pharmacist – Mitul Patel**

**Friendly reliable professional service at the pharmacy**

**All doctors/dentists/veterinary and hospital prescriptions dispensed**

**Professional advice always available**

**Herbal/Homeopathic products**

**Special Orders on request**

**Stagecoach Theatre Arts**  
 An hour to sing, an hour to dance, an hour to act... A lifetime to Perform!

Please contact the Principal, Wendy Ashman  
**01442 823181**  
 leightonbuzzard@stagecoach.co.uk  
 www.stagecoach.co.uk/leightonbuzzard  
 www.facebook.com/stagecoachleightonbuzzard



**SING! DANCE! ACT NOW!**



Theatre Arts Schools  
**Stagecoach**



**M&M H**  
**Plumbing & Bathrooms**



**City & Guilds**  
 Qualified

- Full Bathrooms Installations inc Design, Supply, Tiling
- All General Plumbing work from : Leaking Showers  
 Dripping Taps • Toilets not flushing • Radiators • Drains

Call Mark for a **FREE** no obligation quote **01525 220994**  
 All work fully insured and guaranteed. **07842 653832**

**Barry Cato**  
**Motor Repairs**

— Est. 1981 —

*Servicing, repairs and MOT's arranged*  
**Workshop at:**  
 r/o Norfolk House Farm, Harling Road  
 Eaton Bray, Dunstable, Beds, LU6 1QY  
**Tel: 01525 221681 (workshop)**  
**07836 650015 (mobile)**

**30 Years Experience**  
**Domestic & Commercial Security**



**Burglar Alarms**  
**Redcare Monitored Systems**  
**Intercoms**  
**CCTV**  
**Access Systems**  
**Locks**



CERTIFICATE NO. NAC/G/2113

**Quality Installations – Competitive Prices**  
**Insurance Approved** **Free Surveys**

**AAA SECURITY**

**01525 378222**

Email: [sales@aaasecurity.co.uk](mailto:sales@aaasecurity.co.uk)

[www.aaasecurity.co.uk](http://www.aaasecurity.co.uk)



# janes

Electrical Appliances, Bikes & Flooring Store

The Family Business with 130 years of recommendation



## Free Delivery & Installation

**On Kitchen Appliances & TV's**

within a 15 mile radius (excluding installation on Gas & Built-in Appliances)

## Sound Advice & Peace of Mind

4-8 High Street, Edlesborough, Dunstable, Beds LU6 2HS

Tel: 01525 220208 Fax: 01525 222802

[www.janesltd.co.uk](http://www.janesltd.co.uk)

# *Dominic Woolcott*

## Painter & Decorator



- Internal & External
- Plastering & Coving
- Insurance Work
- 20 Years Experience
- Competitive Rates

**For a professional job call:  
01525 229682 or 07747 042879**

# P. DYER ELECTRICAL

For all your Electrical & Testing & Inspection needs

- Re-wires
- Testing & Inspection
- Security Systems/Lighting
- LED & Low Energy Lighting
- Decorative Lighting
- PAT Testing
- Fuse Boards
- Fault Finding/Repairs

Fully insured, Part P registered, all work guaranteed.  
Fast, friendly, reliable, local electrician. For a free,  
no-obligation estimate, call Paul on:




**Tel: 01525 222109**  
**Mobile: 07850 682815**



David John Harris  
  
 (Established 1992)  
 All Fencing Work • All Gates • Paving • Patios  
 Driveways • Shingle • Hedge Setting and Cutting  
 Grass Cutting • Turfing Specialist • Exterior  
 Painting Service • Sheds Small Building Work  
 Trees & Shrubs Supplied  
**Tel/Fax: 01525 221745**  
**Mobile: 07889 143713**

**WASHING MACHINE REPAIRS**  
 ALSO  
 DISHWASHERS, TUMBLE DRIERS,  
 AND ELECTRIC COOKERS



Call  
**ANDERSON D.R.S.**  
**01582 665764**  
[www.andersondrs.co.uk](http://www.andersondrs.co.uk)  
 SALES AND RENTALS AVAILABLE

 **GYM & TONIC**  
 WANT TO GET FIT, HAVE A  
 HEALTHIER LIFESTYLE & IMPROVE  
 THE WAY YOU LOOK & FEEL?  
 The following can be provided in our  
 Gym in Edlesborough or in your home  
 \* **A Health & Fitness Consultation** \*  
 \* **Personal Training** \* **Massage** \*  
 Ruth Anderson Dip. PT & ST, Member of: Inst of Sports  
 Therapists & Register of Nutritional Therapists  
**Tel:01525 223074 Mob:07812 163979**



For all your painting & decorating requirements  
 Domestic and Commercial  
 call Max for a free estimate with no obligation  
[maxbro@btinternet.com](mailto:maxbro@btinternet.com)

## Abbott Flooring

- Carpet & Vinyl
- Laminate & wood flooring
- Domestic & commercial
- Supply, fitting & adaptations
- Next day delivery
- All work guaranteed
- Free no obligation quotes
- No job to small

We provide a friendly, professional service at very competitive prices. If you require us to supply & fit or you just need some flooring fitted then give us a call.

Telephone 01525 220249  
 Mobile 07958 244536



# High Street Hair

66 High Street , Eaton Bray, Nr Dunstable, Beds. LU6 2DP

**01525 221252**

[www.highstreethair.co.uk](http://www.highstreethair.co.uk)

Monday	Closed
Tuesday	9 - 6
Wednesday	9 - 6
Thursday	9 - 8
Friday	9 - 8
Saturday	9 - 5

A Professional modern salon, Providing  
 Quality hair & nails services for the whole family.



JESSICA



TIGI®



think car, think...

# smartAUTOGROUP



Established locally for over 10 years

Car servicing, M.O.T & repairs  
Bodywork & maintenance  
Mobile car body repairs  
Accident & vandalism damage  
Alloy wheels, scratches, dents, stone chips & scuffs  
Fully equipped bodyshop & workshop  
Complete diagnostic equipment  
Dealer trained master technicians  
Genuine parts



Competitive pricing – up to 50% cheaper than main dealers!

## £10 off with this advert

Work Guaranteed • Free Vehicle Collection & Delivery • Customer Pick-Up & Drop-Off

Call us on **01582 664772** or visit [www.smartautogroup.co.uk](http://www.smartautogroup.co.uk)

Units 17 & 18a, Icknield Way Farm, Tring Road, Eaton Bray, Dunstable LU6 2JX



# Lee Hutt

Heating & Plumbing Services

Bathrooms, Design & Installation

Tiling ♦ Heating ♦ Powerflushing ♦ Taps ♦ Leaks

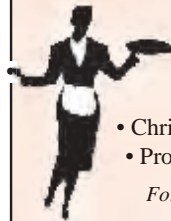
Call Outs ♦ Free Estimates Given



01525 222145



07971 559185



### Patricia's Cuisine

Catering For All Occasions

- Buffets, Dinners •
- Christenings, Weddings, Funerals •
- Promotions & Business Lunches •

*For Enquiries & Menu*

Meadside Farm, 104 High Street,  
Eaton Bray, Bedfordshire, LU6 2DP

**Telephone: 01525 222174**

## P.J.BRINKLOW

### Electrical Contractor

**01525 220469**

**07860 781330**

**43 Peblemoor  
Edlesborough**



## Domestic & Commercial Cleaning Service

- Fully Insured
- Family Business
- Free Quotes
- References Available
- Rental Cleans

Also Carpet Cleaning with the new  
Therma dry cleaning system -  
Cleans, Disinfects, Deodorises and  
Protects in one application  
Carpets dry 15 to 30 minutes

Tel: 01296 624837  
Mob: 07909 934168 / 07796 406717  
[www.spotlessofaylesbury.co.uk](http://www.spotlessofaylesbury.co.uk)

## Mark Janes Contracts

Felt Roofing - All Roofing Repairs  
and Property Maintenance  
*FREE ESTIMATES*



t: 01442 877528

m: 07841 343470

e: [mark.janes3@btinternet.com](mailto:mark.janes3@btinternet.com)

Established 25 years

*Approved Contractor  
for Local Authorities*

*For all your building needs look no further*



# BRIGGS

## BUILDING & CARPENTRY SERVICES



Established 1981

For a professional, friendly service call:

**(01525) 221767**

**(07970) 214439**

### Domestic & Commercial

Extensions  
Renovations  
Conversions  
Alterations

New Builds  
Roof Repairs  
Kitchens  
Bathrooms

Patios  
Driveways  
Decking  
Garden Walls

Mini Digger, Skip Loader and Dumper Hire

All Work Guaranteed

Free Estimates

# Did You Know...

## A piece of local history

### Orchards

“Eight acres of fruit trees were Ezra Tompkin’s other source of income. Buyers from London, Leicester, and even Manchester vied for his plums. Ezra’s son Clifford has memories of four or five visits to the Post Office each day to telegraph prices, demonstrating his father’s shrewd and busy dealings. In one night, the family weighed up and packed two tons in twenty-four pound baskets, lined with a wisp of hay, covered in newspaper, secured by two crossed-over willow laths - all of this done by the light of a cycle gas lamp.”

The evocative recollection above from Maurice Sanders illustrates a significant local industry in operation. From such activity, a number of different stories and rural myths have been passed down that make it difficult to be certain of the actual extent of damson harvesting and their ultimate use. At the time of writing there has been a revived environmental and heritage interest in conservation of the orchards. If such a project is developed, there may be the opportunity for further detailed research that will separate fact from fiction.

One amusing story passed down is of a gentleman called Mr Powell who, it is said, planted a young damson tree upside down to demonstrate how hardy it was, and that it could still flourish in this district. Whether true or not, it illustrates that there is a particular species of fruit associated with this area, now known as the Aylesbury prune, and specific to the chalk downland soil type on land that lies at this height of about 400ft above sea level. It became known as the Aylesbury prune during wartime when rations were

in place, and produce was more closely tracked to its area of origin. As a specific fruit species of the Aylesbury Vale, it was assigned that name. Differing references above to damson, plum, and prune illustrate how many different versions of the history of this local fruit have been passed on.

Another story often recounted, but not entirely proven, is that the damsons were used in the process of dyeing military uniforms or in Luton’s famed millinery trade. In years since, people have experimented with a sizeable harvest of fruit to try and work out if some navy or even khaki-like colour could be extracted, but to no avail.

If they were not used for colouring but had some other purpose in the dyeing process, then perhaps their flesh was used as some sort of setting agent to help make the dyes fast.

Whether their use was in dyeing, or whether simply for jam, chutney, gin, and fruit pies, or both, it is known that the volumes of fruit traded did fall away quite dramatically. Local merchants’ records in log books held at Luton’s Stockwood Museum show that, after the Second World War, damson/prune/plum trading dropped to nothing. If dyeing had been a use for the fruit, the introduction of chemical dyes at that time may be a contributory reason for the decline. Certainly, the condition of the remaining damson orchards seen now, in the early twenty-first century, point to a collapse in this rural industry by the 1950s. By all accounts, the rule of thumb for orchard management was “30 years to mature, 30 years in fruit, 30 years to die”.

### Straw-plaiting

Robsons commercial directory of Beds/

Bucks in 1839 mentions straw plait chief manufacturers as affording a healthy, easy, and profitable occupation to a large proportion of the population of poor inhabitants, even children being capable of executing tasks in the open air.

The Post Office directory of 1854 in Eaton Bray mentions:

Abraham, John - plait dealer

E, Joseph - plait dealer

Mead, John - plait dealer

Smith, Caleb - plait dealer

From John Harris - straw plaiting: in Bedfordshire, one girl in three was employed as a straw plaiter - in the 1871 census, 30% of girls between 10 and 15 were recorded as straw plaiters. Many children started work at an early age, some as young as five.

In the mid-19th century, straw plait was in great demand for hats made in Luton. In the 1870s, the peak had been reached; changes in fashion favoured smaller hats and bonnets for women. The industry began to fall into decline and cheaper Chinese and Italian imports were available.

Wives and children of agricultural labourers provided much of the work force for straw plaiting, and a well-ordered farm engaged in plaiting could obtain as much or more than the husband working on the farm.

Straw plaiting was a domestic industry, producing interim raw material. Flat plaits of straw were purchased by a middle man, usually from nearby market towns of Luton and Dunstable, who sold it on to straw manufacturers. The local plait merchant would go from cottage to cottage collecting plait - the cart would be piled high. When the money from plaiting dried up in Edlesborough and surrounding villages, it left no money for extras...and so the public houses began to struggle.

A child plaiter normally learnt basic skills of the craft at home from his/her mother before being sent, usually at age 4(!), to plait school at the cost of a few pennies. Older children were expected to produce about 30 yards a day. The materials were bundles of split and bleached or dyed straw, supplied by the parents, who bought from the dealers. Colours and movements depended on the pattern being made. In winter, plaiting by candlelight was hard on the eyesight.

Several varieties were woven: plain, single plait, pearl, bird's eye, and whipcord, to name a few. Eaton Bray had 7 plait schools in the village; Edlesborough had its own and used to make the 'Dunstable twist' with five straws.

### **Farming**

Farming in our area has seen many changes. Eaton Bray and its surrounding villages were originally agricultural communities, but in recent years they have grown in size and become more residential, with most people travelling to work in the surrounding towns - very few people still work on the land. The main local soil type is heavy clay loam with a high ph, dictating the type of farming.

It is only in the last 50 years or so that farming has seen the most significant changes. Most local farmers used to milk a small (10 - 20 animals) herd of cows, nowadays an average herd is approx 150 cows but there are literally only one or two dairy herds surviving. Many more sheep are farmed now, with lambs rather than wool bringing the income. In comparison, few pig herds have ever been present locally.

Different crop types are found around our villages now. 50 years ago, many more spring crops were grown, such as spring wheat along with oats and Lucerne and sanfoin as forage. Oil seed rape - a

common, yellow flowered crop found today is a recent introduction. Other modern field crops are winter wheat, winter barley, beans and dried peas.

During the 1950's, several local farms still used a horse for the cart but not fieldwork. The first tractors arrived in the 1930's and Combine Harvesters in the late 1940s. Their arrival reduced the need for farm labour further and nowadays only 1 or 2 people are generally employed on our village farms. Nearly all farmers rely

on second incomes outside of farming in order to survive and, whereas at one time everyone knew everyone else in the village, times have changed considerably. It isn't as common to know your local countryside and neighbours to the same extent today. However, the names of many farming families are still to be found several generations on and no doubt will be recognised for many more years to come.

## Christmas Chocolate Biscuits

Makes approx. 24

### Biscuits

250g soft butter

150g caster sugar

40g cocoa powder

300g plain flour

½ tsp bicarbonate of soda

1 tsp baking powder

### METHOD

1. Preheat oven to 170°C/gas mark 3 and line 2 baking sheets with baking parchment.
2. Cream the butter and sugar in a bowl until soft and light, gradually beat in the cocoa powder and then the flour with the bicarb and baking powder. Alternatively put everything in a processor and blitz.
3. Pinch off pieces about the size of a large walnut, roll them into balls, then slightly flatten into fat discs well spaced on your baking sheet. 12 per baking sheet.
4. Bake for 15 minutes. The biscuits won't feel as if they've had enough time but they will continue to cook as they cool.
5. Place the baking sheet on a cold surface and let it cool for 15 minutes before transferring the biscuits to a wire rack.
6. To make the topping, put the cocoa powder, icing sugar, water and vanilla extract into a small saucepan and whisk over a low heat until smooth. Remove from the heat for 10 minutes.
7. When the biscuits are cool, top each one with a tablespoonful of the topping. Use the back of the spoon to spread the mixture.
8. After you've placed topping on 6 biscuits, scatter with some of the Christmas sprinkles, and continue until all the biscuits are topped. Do not ice them all before sprinkling as the sprinkles will not stick if the topping has dried.

**TIPS:** The biscuits can be baked up to 5 days ahead if stored in an airtight container between sheets of parchment paper.

To freeze, place the cooled biscuits in sealable bags or rigid containers for up to 3 months and thaw at room temperature if required.

### Topping

2 tbsp cocoa powder

175g icing sugar

60ml boiling water (from a kettle)

1 tsp vanilla extract

Christmas sprinkles



# Dunstable Downs Events

Dunstable Downs, Chilterns Gateway Centre, Whipsnade Road, DUNSTABLE, Beds  
LU6 2GY 01582 500920 [www.nationaltrust.org.uk/dunstabledowns](http://www.nationaltrust.org.uk/dunstabledowns)  
Email: [dunstabledowns@nationaltrust.org.uk](mailto:dunstabledowns@nationaltrust.org.uk) Twitter: @DunstableDwnsNT

Discover a magical Christmas and create new traditions this winter.

From enchanted trails to sumptuous food and visits from Father Christmas, there's something for everyone

## **Stir Up Sunday** 23 November

11am – 3pm Make a Christmas wish as you stir the giant pudding. Christmas puddings tastings and treats to take home. Free admission

## **Wreath Workshop** 6 & 8 December

10am -12noon Create an extra special wreath to hang on your front door this year £20 per person with refreshment, all materials provided. Booking essential 01582 500920

**Tree Dressing** 6 - 7 December 11am – 3pm Help to bring Christmas to life in the Chilterns Gateway Centre as you create decorations for the trees. Free admission, £1.50 per decoration to take home

**Father Christmas** 7, 14 & 21 December 11am – 3pm Help Father Christmas' elves to make magic reindeer food and then meet Father Christmas. Don't forget to think of what you would like to ask for this year! £5 per child (includes gift)

**Toddler's Christmas** 10 & 17 December 11am - 3pm. A very special weekday visit to see Father Christmas for under 5's. Help Father Christmas' elves to make magic reindeer food and then meet Father Christmas. £5 per child (includes gift). Booking essential 01582 500920

**Winter Trail** 23 November – 1 January 11am – 3pm Explore the Woodland Winter Trail. Get a map and clues from the Visitor Centre to help you find your way. Free admission

Please note that car parking charges apply

for all events. National Trust Members park for free.

The National Trust is a registered charity, number 205846



## London Luton Airport

With an increase in aircraft in the area and in particular when the wind is from the East, we are getting some aircraft flying directly over the village to join the flight path into the airport. If you are disturbed by the traffic flying over the village, there is a complaints hotline number: 01582395382. This is an airport number where you can register your concerns. It is important to do this if we are to reduce these disturbances over our village.

If you need to complain about Heathrow flight noise the number is 0800 344 844. Email: [noise\\_complaints@heathrow.com](mailto:noise_complaints@heathrow.com)



# Take a Walk

Aldbury - Tring Station - Wigginton - Cow Roast - Grand Union Canal - Tom's Hill

7 Miles 3¼ Hours

**Location and Parking** Aldbury is between the A41 near Tring and west of the B4506 at the edge of the Ashridge Estate. There is sometimes room in the car park on Stocks Lane.

**Grid Reference** SP965124.

**Ordnance Survey** Explorer Map no 181, Landranger Map no 165.

**Facilities** No toilets. Shop/Post Office, pubs the 'Greyhound' and the 'Valiant Trooper'.

**Start** The centre of the village close to the pond.

**Description** A more complicated walk, varied scenery and infrastructure, some stiff slopes up and down, several stiles and gates. Good paths, easy to follow and well marked.

## The Walk

1 Walk out of the village along Station Road, go past the church to the signpost and turn right, through the kissing gate. Cross the open ground and go through the gate. Continue up the gravel path, through the next kissing gate and follow the path between the farm buildings and the trees. Carry on upslope along the enclosed path and through the kissing gate at the junction of paths.

2 Turn left downslope on the narrow path between hedges and keep straight on at the crossroads of paths, through the narrow gate. Continue straight on down the roadside path across the railway at Tring Station.

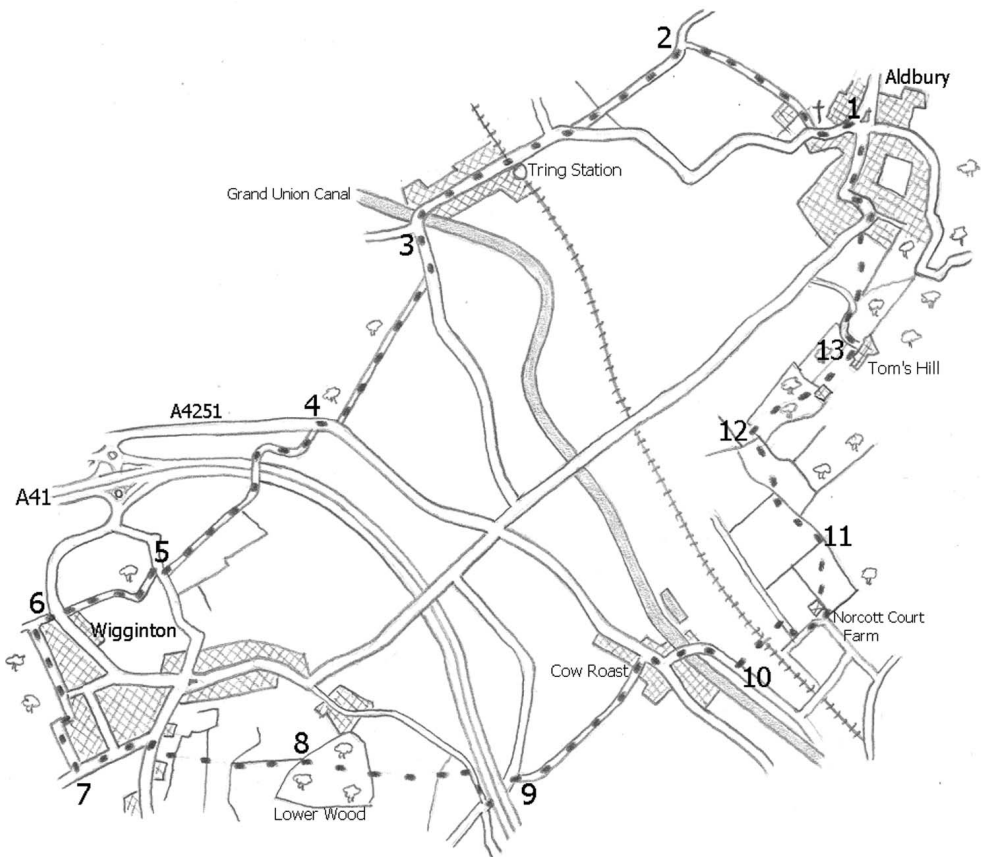
3 At the junction, just past the canal bridge, turn left into Beggars Lane for 400yds to the Ridgeway signpost and turn right through the kissing gate. Go along the path between the fence and the hedge to the A4251 (the old A41). Cross the road carefully, it is busier than it seems and turn right along the roadside path to the signpost.

4 Take the path uphill signposted The Twist, past the barrier and through the kissing gate. Bear right up the path, turn right then left across the graceful footbridge over the dual carriageway A41. Carry on along the path, through the kissing gate and up the left hand field edge to the marker post. Turn left through this kissing gate and right, up the path between the fences and the hedge. Pass through the kissing gate at the top on to the road (The Twist) and turn right for 20yds to the signpost.

5 Go up the steps, through the kissing gate and along the footpath up the slope through the next kissing gate. Continue ahead on the field edge with the trees to the right through the top corner (kissing gate), past yet another kissing gate. Keep direction with the field edge now left past the Ordnance Survey marker point to the road at the edge of Wigginton.

6 Cross and continue ahead on the gravel path, turn left at the wooden gate down the hardcore path between the hedge and the wood. Cross the tarmac driveway and follow the path right then left between the fence and the hedge with an open field to the right.

7 At the signpost, turn left down the road with the houses to the left and carry on to the end. Turn right, to the signpost on the left, pass through the kissing gate and follow the



path through the long grass downhill. Keep direction down the left hand field edge past the signpost to Cow Roast.

8 Follow the track through Lower Wood and keep direction with the electric fence to the bottom of the slope. Go through the kissing gate and bear slight left over the field which may be under cultivation although a path should be well marked. On the far side of this kissing gate turn right parallel to the A41, go down the concrete track to the road and turn left through the underpass to the signpost on the right.

9 Go through the gate and follow the hardcore road past the dogleg at the marker post, continue down to the road. Turn right, past the 'Cow Roast' inn and immediate left past the phone box, cross the bridge over the canal and turn right with the road to the signpost on the left.

10 Step over the stile in the small gap and cross the field ahead (a track should be visible). Cross the footbridge over the railway and the field ahead, turn right between the fence and the hedge to the corner. Turn left along this track and bear right at Norcott Court Farm, take the driveway left past the footpath signboard and turn right between the barn and the fence. Go over the stile and take a left hand diagonal up to the top left corner.

11 Go over the stile and carry on with the high wire fence to the right; the path goes on



a slight downslope through the gap in the corner and bear right up to the stile. Take the path bearing left upslope through the field, over the stile at the top left and carry on for 50yds to the four way signpost.

12 Turn right through the metal gate, carry on ahead through the trees and keep direction on the more substantial road through Tom's Hill to the signpost on the left.

13 Turn left, the path curves left then back to the right, keeping the fence to the left. At the next signpost, go straight on over the stile and take a left hand diagonal to the opposite corner on to the road. Turn right and follow the road left to the 'Valiant Trooper, then right, back to the centre of Aldbury village.

### **Background Information**

Cow Roast is derived from 'cow rest'; before the advent of the canal and the railway, large herds of cattle from Wales and the border area would be driven by road down to London, using the Tring Gap to cross the Chilterns. The herds and their drovers rested at the hostelry here on the summit before continuing their journey.

The railway here is the West Coast Main Line between London (Euston) and Birmingham, the North West and Scotland. It was one of the first main lines to be built and the first main line into London.

The London and Birmingham Railway was authorised in 1833 and construction started in November that year. The chief engineer was Robert Stephenson (1803-1859), the son of railway pioneer George Stephenson, who had surveyed optional routes and decided to take the present course rather than a route via Oxford preferred by some backers.

Work proceeded smoothly in most locations but trouble was encountered at Kilsby in Northamptonshire close to Blisworth, where the Grand Union Canal had run into problems over thirty years earlier. To ease the gradients through the Chilterns at the Tring Gap, the railway navvies dug the massive cutting over 40ft deep and two and a half miles long, purely with shovels and pickaxes and took the soil away in wheelbarrows.

The 112 mile long railway was opened in 1838, 20,000 men had been working for the five years of construction, at a cost of £5½ million. It connected in Birmingham with the Grand Junction Railway on which passengers could travel further to Liverpool or Manchester. The two railways merged in 1846 to form the London and North Western Railway.

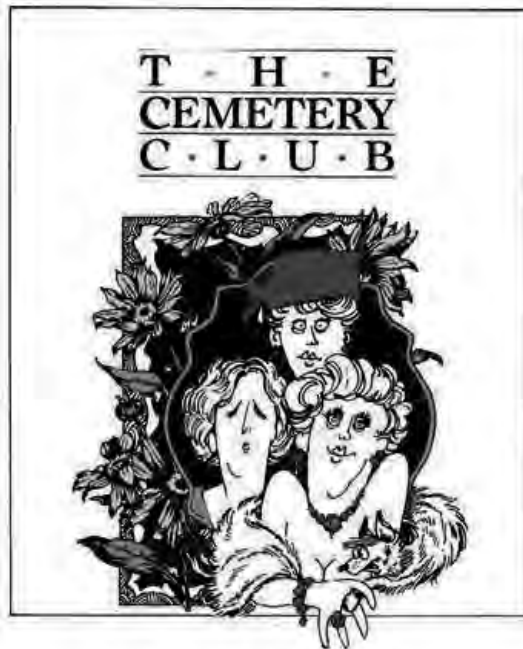
In the early part of the 20th century the LNWR was the largest joint stock company in the world and promoted itself as 'The Premier Line'.

Early railways were built on a trunk and branch system, the main line took the shortest, fastest and most easily built route between main towns. Branches were then added to feed the trunk line from less important towns. Tring Station is consequently still in the countryside two miles away from the town centre, (a small settlement has built up around it). The station at Leighton Buzzard is across the river and the canal, a mile from the town centre. An exception is Northampton where the railway planned to go through the town but gave up after opposition from local people.

# Front Row Theatre Group

Presents

*By kind permission of Samuel French*



BY IVAN MENCHELL

**Eaton Bray Hall**

**Thursday – Saturday**

**13 – 15 November 2014**

**at 7.30 pm**

**Licensed Bar from 7.00 pm**

Three New York widows meet once a month for tea before going to their husband's graves. Ida is sweet tempered and ready to begin a new life, Lucille is a feisty embodiment of the girl who just wants to have fun, and Doris is priggish and judgmental, particularly when Sam the local butcher enters the scene.

Come and join us for an evening of comedy and pleasure that will make you glad you went to the theatre

You'll die laughing in The Cemetery Club!

**Box office – 01525 222283**

— Christopher —  
**PALLET**



*Estate Agents - Valuers - Letting Agents*

**Successfully  
 Selling in LU6**

**Contact Us Now  
 for a Free Valuation**

**01525 222333**

[www.edlesborough@christopherpallet.com](mailto:www.edlesborough@christopherpallet.com)



**Coffee Tavern**

Large Hall £6.00 per hour  
 Committee Room £3.50 per hour  
 Large Hall & Committee Room £8.00 per hour



**Bookings 01525 220891**  
 Stairlift and access ramp available

**D NICHOLSON  
 PLUMBING REPAIRS  
 and INSTALLATIONS**

NO JOB TOO SMALL



• Emergencies • Free Estimates  
 • No call out charges

Dave Nicholson

**MOBILE: 07976 975604**

**HOME: 01525 872335**

**City &  
 Guilds  
 Qualified**

**R.J.O'CONNELL  
 BUILDING SERVICES**

EXTENSIONS, PATIOS,  
 DRIVEWAYS, ROOF REPAIRS  
 AND PROFESSIONAL  
 DECORATING SERVICE

**TEL: 01296 681323**

**MOB: 07855 236726**

**Will Kimberley  
 Garden Services  
 01442 255784**

Phone for a free no obligation written estimate  
[wkgardenservices@btconnect.com](mailto:wkgardenservices@btconnect.com)

- High hedges a speciality
- Fences erected and repaired
- General garden tidy up's
- In fact any job in the garden!

# Make a Will

AND LASTING POWERS OF ATTORNEY

## Protect Your Home 100%

**YOU DECIDE**, who is to run your affairs, who gets what, guardians etc, not the State.

**MINIMISE RISK** of Inheritance Tax and the disinheritance of children.

### Best Price Guarantee

from specialist Solicitors and professional Will Writers since 1999

FREE HOME VISIT

For a **DAYTIME** or **EVENING** appointment call

# 01525 220644

[www.wisechoicewills.co.uk](http://www.wisechoicewills.co.uk)

from  
**CARE FEES**  
and  
**PROBATE COSTS**



Will Trusts & Probate Practice

*A wise choice*

MAKING A WILL HAS NEVER BEEN EASIER

*Stuart Ball*

*Ceramic Wall & Floor Tiling Specialist*

*Over 31 yrs Experience*



**City and Guilds of London Institute**

*Tiles supplied or Labour Only*

*For a reliable service call your Local Tiler*

*Eaton Bray 229381*

## Signs \* Graphics \* Clothing

# PinStripes

VEHICLE GRAPHICS

MAGNETICS

PRINTED & EMBROIDERED CLOTHING

SHOP SIGNS & WINDOWS

BOARDS & BANNERS

BUSINESS CARDS & STATIONERY

CANVAS PRINTS

AND SO MUCH MORE!

**01525 220485**

**07973 167779**

Join us on Facebook @

PinStripes Signs Graphics Clothing

For updates and special offers

**EXCEEDING EXPECTATIONS IS JUST PART OF OUR SERVICE**



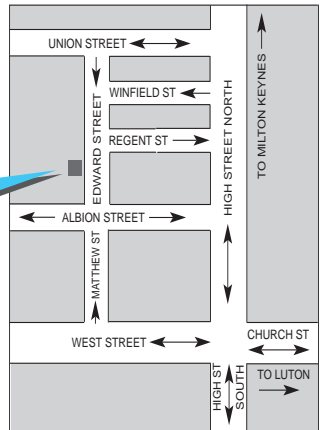
If you're **selling, letting** or **buying** a home, make it happen with your local estate agent



01525 220605 • [info@giblinproperty.co.uk](mailto:info@giblinproperty.co.uk)  
[www.giblinproperty.co.uk](http://www.giblinproperty.co.uk)

# Dunstable LAMINATES

email or fax your requirements for a quote or take advantage of our free home measuring service cutting and edging service available



why not visit our showroom - you'll be amazed at the choice

47 Edward Street, Dunstable,  
Bedfordshire LU6 1HE  
Tel: 01582 668973 Fax: 01582 608227  
Email: sales@dunstablelaminates.co.uk  
Web: www.dunstablelaminates.co.uk

THE **WORKTOP** specialist



## James B Chadburn FBHI Fine Antique clocks & Barometers

Specialist in repairs & restorations.

Valuations & clock finding service.

Advice & assistance on formation & disposal of private clock collections.

Quality clocks/barometers Bought & sold.



Telephone 01525 221165

Mobile 07790 000629

E-mail: info@jameschadburn.com



## Café masala

*Exquisite Indian Cuisine*

We Cater for Office or Private Parties and don't forget to try our Sunday Buffet

10% Discount on all Takeaway Orders Over £12

Fully Licensed & Air Conditioned

Open Seven Days a Week

Hours: 12 Noon to 2.30pm & 6.00pm to 11.30pm

**Tel: 01525 22 22 64**

63 Bower Lane · Eaton Bray · Dunstable · Beds · LU6 1RB  
email: taraque@hotmail.co.uk · www.cafemasala.com

# alto window cleaning

*A reliable and professional service.....*

- Window Cleaning
- Conservatory Cleaning
- Fascia & Gutter Cleaning
- Solar Panel Cleaning

**T: 01525 234120**  
**M: 07807 973871**

## AARON FENCING

ALL TYPES OF DOMESTIC & COMMERCIAL  
FENCING & DECKING WORK UNDERTAKEN

*FREE ESTIMATES*  
*FULLY QUALIFIED & INSURED*  
*PERSONAL SERVICE AT COMPETITIVE PRICES*

**TEL: 01582 665779**  
**MOBILE: 07798 927272**

7 STATION ROAD, DUNSTABLE, LU5 4HS

Buy Direct From Our  
Own Farm

Master Card

VISA

From **Ivinghoe Turf**

- Commercial & Domestic
- Small Orders Welcome
- Bark, Grass Seed & Fertiliser
- Laying Service
- Discount on Larger Orders
- Screened & Blended Topsoil
- All Year Availability
- Forklift Delivery Available



ROLAWN®  
Approved Rolawn  
Stockist

Family firm farming since 1949

**ALL AREAS**

Freephone :

**0800 043 5061**

[www.ivinghoeturf.com](http://www.ivinghoeturf.com)

The Bungalow, Vicarage Farm, Ivinghoe, Leighton Buzzard

# YEARDYE

*Luxury Bathrooms*

25 years in Herts  
Beds and Bucks

DESIGN  
SUPPLY  
INSTALLATION



[www.yeardyeluxurybathrooms.co.uk](http://www.yeardyeluxurybathrooms.co.uk)

email: [cliff@yeardye.com](mailto:cliff@yeardye.com)

T: 01525 222717 M: 07972 328590

## ARC Contract Services Ltd

- Painting & Decorating • Plastering
  - Wall & Floor Tiling • Door Hanging
  - Bathroom & Kitchen Installations
- 20 years experience

All work guaranteed and fully insured

Call Adrian : **01582 539179**

Mobile : **07789730580**



## WESTROPE BROS.

**LAWN MOWER SERVICES**

ALL TYPES GARDEN MOWERS SERVICED

**THE RYE, EATON BRAY**

**Tel: Eaton Bray 220587**

# Gas Boiler Servicing

Over 35 years experience

Have your boiler serviced by a **Gas Safe**  
and **CORGI** registered engineer

Other services available:

Maintenance, repair and installation of all domestic gas appliances including L.P.G. Boiler installations, Landlord Safety Certificates and Power flushing.

Free Quotes, no call out fee, and free friendly advice on all of the above.

## Edwards Gas & Heating Services

Eaton Bray

# Tel 01525 220626

Email: [stevethegas@orange.net](mailto:stevethegas@orange.net)



## Vicky

### *The Dog Care Specialist*

### *Where Dogs Come First*



- Over 20 years of professional experience
- Sympathetic and gentle handling of all dogs
- Trained at the London Academy of Professional Groomers to the highest City and Guilds standard
- Dorwest Veterinary Trained
- Member of the Pet Industry Federation
- **No cages used**

[www.vickysdogcare.co.uk](http://www.vickysdogcare.co.uk)

Telephone: 01525 222775

Mobile: 07796 445416

Email : [enquiries@vickysdogcare.co.uk](mailto:enquiries@vickysdogcare.co.uk)

*Committed to the highest standards of animal welfare and customer care.*





**BEFORE**



**& AFTER**



# MISTY DOUBLE GLAZING ?

**KEEP YOUR WINDOW FRAMES....**

**....WE JUST REPLACE THE GLASS!**

- UPVC • Aluminium • Or Wood

Because we replace just the glass the repair is a

**FRACTION OF THE COST**

of a complete replacement window.

## mistydoubleglazing.co.uk

### 01525 876808

#### QUALITY GLAZING SERVICES

**We also replace Broken...**

- Glass • Handles • Hinges & Locks

**and Repair... Patio Doors & Conservatories!**



# REVITALA

## HOLISTIC THERAPY

Holistic therapies are concerned with treatment through massage, manipulation and relaxation. They are not only treatments for one physical ailment or one part of the body, but also treat the person as a whole. Ideal for today's stressful lifestyles.

Treatments include:

- Aromatherapy Massage
- Indian Head Massage
- Hot Stone Massage
- Reflexology
- Reiki

Vouchers are available for any treatment, so why not treat a loved one or friend as well as yourself.

Edlesborough based. For more information or to book an appointment call Kate Meredith IHHT, RGN, on **01525 221380**

*HPC Registered*  
**CHIROPODIST & PODIATRIST**

*Miss Johnston*

*For visits in your home*  
*Phone: 07981 749038*

*(Also Central Luton surgery - open 6 days)*

**jazzercise.** 60 minutes  
real Results of **ME** time

**01525 715208**  
www.jazzercise-uk.com  
facebook.com/jazzercise.  
dunstablelutoneatonbray

**Thursday & Saturday 9.30am**  
**Eaton Bray Village Hall**



# Stephen D. Janes

(Established in 1982)

**CARPENTRY, JOINERY  
KITCHENS FITTED  
PROPERTY MAINTENANCE  
TELEPHONE: 01525 220649**

## Digital +

**Aerial & Satellite Systems**

tel:01525 237498  
mobile:07970 260518  
www.digitaltelly.net



BT Vision



**sky freesat**



### **BELLOWS MILL**

*Bed & Breakfast & Self Catering accommodation*

Civil Wedding ceremonies and receptions available

Eaton Bray, Dunstable, Beds. LU6 1QZ  
Tel: 01525 220548  
email: reservations@bellowsmill.co.uk

[www.bellowsmill.co.uk](http://www.bellowsmill.co.uk)



Ian is one of the countries most sought after photographers. He is recommended by some of the UK's most prestigious venues such as Luton Hoo, Ashridge, The Kia Oval, Hatfield House and The Connaught to name just a few. Ian specialises in wedding, portraits and commercial photography.

**Ian Waldron**  
naturally relaxed photography

[www.ianwaldronphotography.com](http://www.ianwaldronphotography.com)  
01525 221479

Your Village Photographer  
Based at Sparrow Hall Farm - Edlesborough

THE BEDFORDSHIRE AREA GROUP OF THE ASSOCIATION OF  
16MM NARROW GAUGE MODELLERS PRESENTS

## STEAM IN BEDS "2014"

THE SHOW JUST GOT BIGGER AND BETTER

LARGE SCALE NARROW GAUGE MODEL RAILWAY SHOW  
FEATURING NARROW GAUGE LAYOUTS RUNNING 16MM LIVE  
STEAM LOCOMOTIVES. TRADE SUPPORT FROM SPECIALIST  
SUPPLIERS

**SATURDAY 29 NOVEMBER**

10.00AM TO 4.30PM - ADULTS £5.00  
ACCOMPANIED CHILDREN UNDER 16 FREE

### VENUE

EATON BRAY VILLAGE HALL  
INCLUDING PART OF ST MARY'S CHURCH  
CHURCH LANE, EATON BRAY, NR. DUNSTABLE, LU6 2DJ  
REFRESHMENTS AVAILABLE ALL DAY  
FOR FULL DETAILS SEE OUR WEB SITE: [WWW.BAG16MM.ORG.UK](http://WWW.BAG16MM.ORG.UK)



1<sup>st</sup> Totternhoe Scout Group & Brownies  
& 4<sup>th</sup> Dunstable Guides

## Jumble sale

Saturday 8<sup>th</sup> November

11am - 2pm

The Methodist Church  
Dunstable Town Centre (Opposite Wilkinson)  
Got a donation? Email [Totternhoescouts@gmail.com](mailto:Totternhoescouts@gmail.com)

## Neil Hodson Associates

*BUILDING DESIGN  
STRUCTURAL ENGINEERING*

**PROFESSIONAL BUILDING DESIGN,  
ADVISORY AND DRAWING SERVICES**

From plans for domestic extensions to multi-storey offices, commercial buildings and factories.

Structural surveys, site surveying,  
advice on building defects and  
Feasibility Studies

Planning Applications and Building  
Regulation Consents obtained.

**24 HIGH ST TRING  
Tel 01442 890894 OR  
Edlesborough 222462**



**Michael Hubbins**

**Ex. BT. ENGINEER**

**38 YEARS EXPERIENCE**

Telephone Extn. Sockets  
Domestic Electrical work

**Phone: 01582 471648  
Mob: 0771 8834851  
34 Grove Road  
Dunstable LU5 4BY**

**Anne Johnson D.O.**

*Registered Osteopath*

6 Moor End, Eaton Bray

**01525 221958**

**07957 250682**

Daytime and Evening

Appointments Available



# J ABLE BATHROOMS

**New Showroom Opening in Edlesborough Soon!**

We offer a complete design, supply and installation service.

## DESIGN

Free CAD design of your bathroom so you can see a photo realistic plan of your finished bathroom.

## SUPPLY

Come and browse our display suites and we will help you find the bathroom you are looking for.

## INSTALLATION

Our installations are of the highest standards!

We take pride in making sure our customers are delighted with the finished result.

**We have suites in a wide range of styles to suit any budget.**

**Drop in or ring to make an evening appointment at the showroom.**

**You can also ring to arrange a home visit at your convenience.**

[www.jablebathrooms.co.uk](http://www.jablebathrooms.co.uk)

***J ABLE BATHROOMS THE LOCAL BATHROOM EXPERTS YOU CAN TRUST***

3 Summerleys, Edlesborough, Buckinghamshire. LU6 2HR (Just past the village shop)

Tel: 07891 449 077 or 01525 220043 E: [ableplumbing@hotmail.co.uk](mailto:ableplumbing@hotmail.co.uk)

# fancy a break?



LUXURY 3 BED, 2 BATH APARTMENT APPROX 1 MILE FROM CENTRE OF PUERTO BANUS MARINA, SPAIN. 45 MINS EASY DRIVING FROM MALAGA AIRPORT.

ALL MOD CONS INCLUDING AIR-CON, SAT TV, FULLY EQUIPPED KITCHEN, SWIMMING POOLS, EXCELLENT CLUBHOUSE & TENNIS COURTS.

MANY GOLF COURSES AND ALL WEATHER BOWLING GREENS NEARBY. CLIMATE IDEAL FOR HOLIDAYS THROUGHOUT THE YEAR. RATES £350 - £750.

CALL PETER OR CELIA ON 01525 220173 OR VISIT OUR WEBSITE AT [WWW.479LOSANARANJOS.CO.UK](http://WWW.479LOSANARANJOS.CO.UK).

# Plumm

PROPERTY

*'A fresh approach to selling property' ...*

**IN AND AROUND YOUR VILLAGE**

**Phone now for a free, no obligation, Valuation of your Property**

**01296 660230**

**01442 863737**

[www.plummproperty.co.uk](http://www.plummproperty.co.uk)

## Absolutely Plastered

**DOMESTIC/COMMERCIAL,  
CLEAN AND RELIABLE SERVICE,  
FREE ESTIMATES, FRIENDLY ADVICE**



- \* Plastering & Coving
- \* Floor Screeding
- \* Pebbledashing & Rendering
- \* Dry Lining
- \* Cornices & Mouldings
- \* Insurance Work Undertaken

**CALL NICK CONWAY ON**

**Mobile: 07751 830716**

**Tel: 01296 688981**

6 Cotes Way, Wing, LU7 0RB

*Established over 20 Years*

## Duncan Tomblin TREE SURGEON

Forestry Contractor • Tree Felling  
Crown Reduction & Thinnings  
Deadwooding • Hedge Cutting  
Stump Grinding • Site Clearance  
Private Agriculture Fencing Contractor  
Chipper & Stump Grinding Hire  
Digger Hire

**FULL PUBLIC LIABILITY INSURANCE  
FREE ESTIMATES**

*'The Best Choice For Your Tree'*

**TEL: (01525) 221946**

MOBILE: (07802) 410728

12 Greenways, Eaton Bray, Beds

# Eaton Bray Academy Enterprise Team at Café Masala!

After a number of years running the EBA Enterprise, we have made the task even more exciting this year! The children will be setting up their own restaurant and inviting friends and family to come and eat the food prepared, cooked, and served



by their own fair hands! They will also be providing the entertainment, starting with background music and then to round the evening off, the whole group playing some tunes they have learned in their ukulele lessons.

We began by finding out how important it was to tempt the taste buds. Here is a willing volunteer trying mash with garlic!

The children were taught how to make bread by Mr Wallis, our School chef. There were a few shocked parents when they saw the bread “growing” in the back of their cars on the way home from School!



We gathered damsons and quince from the school grounds. These have now been turned into very tasty damson and quince cheese to serve with our cheese board.



Mr Wallis is going to teach us how to make pasta next week. Then we will be taught how to make meat balls, chicken with parma ham and all the desserts we have chosen.

But for now, here we are at Café Masala learning how to run a successful restaurant. We are having a great time, and the food’s lovely! Thank you to everyone at the restaurant.



# Dagnall Christmas Fair

6 December

Time 1-3pm

## Dagnall Village Hall

Santas grotto, childrens games & crafts, tombola, raffle, stalls selling books, cards and handmade crafts, Dagnall's finest refreshments, face painting, tattoos

All proceeds to Dagnall school & Dagnall Under Fives



## Dagnall Christmas Bingo

**Third Festive Bingo  
In memory of Basil Thorne**

**Wednesday 3 December  
7.30pm for 8pm start  
Dagnall Village Hall**

**Bring Your Own Party Food for the buffet – please bring a plate of sweet or savoury or drink of your choice**  
**Raffle**

**Any enquiries please phone  
Sheila on 01442 842404  
or Helen on 07825 778930**

**Proceeds to Dagnall Village Hall**

invites you to

Eaton Bray  
Methodist  
Church

## Café Community

*Saturday November 8th*

*11.00am to 1.00pm*

*Relax & chat with friends,  
coffee/light lunch*

*Charity of the month:  
The Neuro Foundation*

*All ages welcome (inc. activity area).*





# Eaton Bray Academy

*What makes Eaton Bray Academy  
a wonderful place to be?*



Here are just some of the exciting activities and developments that the children have enjoyed recently



Stockwood Park Sports



EBA Enterprise – Dragons' Den



Music Lessons



Holiday Club Fun



Extra-Curricular Clubs



Please come and visit our friendly village school.  
Phone 01525 220468 or email [admin@eba.ec](mailto:admin@eba.ec)



Theatre Trip



"Home cooked" meals



Refurbished ICT Room



Pre-School Playground



Key Stage Two Pantomime



Breakfast Club



Curriculum Days

## Quotes from parents

*"The school has already exceeded our expectations as a nurturing, encouraging and holistic educational establishment."*

*"I cannot think of any better environment for children to be nurtured in!"*

*"We like learning French!"*

## Quotes from children

*"I like it when we do our work."*

*"Early Reading is good. I love doing my letter sounds!"*

*"We are all learning!"*



# MOT TEST CENTRE

**ROEBUCK GARAGE**  
HIGH STREET  
**EATON BRAY**  
**220385**

## McTimoney CHIROPRACTIC



Margie Craib BSc BHSI DC AMC MMCA  
Human and Animal Treatments

Ashridge Farm, Ringshall, Berkhamsted, Herts HP4 1ND  
Telephone: (01442) 842729

General Chiropractic Council Registration No. 293



Virtual administrative  
support to businesses &  
private individuals

Website hosting  
Domain registration  
Desktop publishing

# 01525 229695

Email:

[enquiries@morenassociates.co.uk](mailto:enquiries@morenassociates.co.uk)

[www.morenassociates.co.uk](http://www.morenassociates.co.uk)

## ADRIENNE'S PRIVATE HIRE

Call for a **FREE** quotation  
*Book early to avoid disappointment*  
*Very competitive prices*

Airport Transfers  
& Private Hire

**07980 039715**

*Our executive Cars, 6 seater Minibuses and  
lady driver are all available*

## J.G.S. Metalwork & Son

Specialists in Gates  
& Gate Automation

Access Control • Security Grilles • Railings  
Balconies • Stairwells

[www.jgsmetalwork.co.uk](http://www.jgsmetalwork.co.uk)

Call in to discuss your ideas

High Street, Edlesborough LU6 2HS

Tel: 01525 220360 Fax: 01525 222786

## GRASS ROOTS GARDEN MAINTENANCE

TREE SURGERY, HEDGE PRUNING,  
SELECTION SUPPLY AND PLANTING OF  
TREES, SHRUBS AND HEDGES.  
REGULAR MAINTENANCE/ONE-OFF JOBS  
(Fully Insured)

Brian McMahon NCH (Arb)

**01525 221960**



## Edlesborough Flowers

Flowers, Gifts, Jewellery  
& More...

2 High Street,  
Edlesborough,  
LU6 2HS

Tel: 01525 221920

# POPPY PROM

7.30pm

**8 November**

St Mary's, Eaton Bray



**Box Office: 222283**



Caritas Harmony Are Joined By Ladies  
from Herts, Beds & Bucks To Gift A Song  
For Macmillan At Christmas

**Christmas Spectacular**  
**6.30pm Sat 13 December 2014**  
**Methodist Church, The Square,**  
**Dunstable LU5 4NA**

**Tickets £5 from Brenda on 01582 873656**  
Children 12 and under free

email - [info@caritasharmony.co.uk](mailto:info@caritasharmony.co.uk)

[www.caritasharmony.co.uk](http://www.caritasharmony.co.uk)

**Kids in Action**  
**Childrens Charity**

## **Christmas Craft Fayre**

**Sunday 30th November 2014**

**10am until 4pm**

**£10.00 a table**

**Refreshments available**

**Unit 26 Apex Business Centre**  
**Boscombe Road**  
**Dunstable**  
**LU5 4SB**

**To book a table please call**  
**Tracey 01582 477762**

**Dunstable Downs**

National Trust  
Central Bedfordshire

**Escape in South Bedfordshire**  
Discover a magical Christmas and create new traditions this winter. From enchanted trails to sumptuous food and visits from Father Christmas, there's something for everyone. For more information visit: [www.nationaltrust.org.uk/dunstable-downs](http://www.nationaltrust.org.uk/dunstable-downs) or call 01582 500920

# St Mary's Christmas Fair

Saturday 15 November 2014

12 - 3pm

Eaton Bray Village Hall

50p admission adults

Children free!

Come and visit

## Santa and Mrs Claus

with their elves in their  
Christmas grotto at this  
year's Christmas Fair!



With lots of other stalls to browse for your  
Christmas presents, or just to treat yourself!

Delicious bacon butties and other refreshments on  
sale all afternoon

For more information, or to book a stall, please  
ring 01525 852368

# ILLUSTRIA

## Kennels & Kathotel

Offering your pet a fully licensed Dog and Cat boarding service.

Purpose built Dog kennels

Individual Cat chalets with outdoor exercise runs

All in pleasant country surroundings

**01582 ~ 665343**



ILLUSTRIA  
Springfield Road  
Wellhead  
NR Dunstable Beds  
LU6 2JT



Proprietors

*Mick, Denise and Michele Garrod*

**G & J Groundwork**  
**Ring Garry**  
**01582 477568**  
**07949 118011**

**Fencing Panels • Blockpaving • Paths**  
**Shingle Drives • Slabs • Paving**  
**Steps • Gardenwalls • New Patios**  
**Relaying • Soak Aways • Drainage**  
**Free estimates or advice • References**  
**[www.gandjgroundwork.co.uk](http://www.gandjgroundwork.co.uk)**

## Dog Walking & Pet Sitting



We look after any animal from hamsters to horses

Tel: 07756 930814

Email: [crittercare@sky.com](mailto:crittercare@sky.com)

## St. Judes

physiotherapy, health and well being

- Chartered Physiotherapists
- Chiropody & Podiatry
- Massage
- Acupuncture
- Pilates
- Pregnancy care



**Get back into the swing of things**

**01525 377751**

[enquiries@stjudesclinic.com](mailto:enquiries@stjudesclinic.com)

**26 Lake Street, Leighton Buzzard**  
**Bedfordshire LU7 1RX**  
**[www.stjudesclinic.com](http://www.stjudesclinic.com)**



For a top quality decorating job call

# Marc Flack

**01525 223166**

Trading locally for 10 years  
References are available

Make your house a home with blinds and awnings from

**VANSAR  
BLINDS** 

[www.vansarblinds.co.uk](http://www.vansarblinds.co.uk)



- Free No Obligation Measuring And Quotations
- All Blinds Made To Measure
- Choose In The Comfort Of Your Own Home Or Workplace
- Family Run Business
- Large Range Of Quality, Affordable Fabrics And Colours To Choose From

YOUR LOCAL EXPERTS  
**OVER 25 YEARS**

Call: 01525 220477 or 01582 699565 E: [sales@vansarblinds.co.uk](mailto:sales@vansarblinds.co.uk)

### Financially Prudent (IFA) Ltd

23 The Green, Edlesborough, LU6 2JF

Your local IFA for impartial Personal or Corporate advice on:

- Mortgages
- Pensions & Annuities
- Insurance
- Savings & Investments

Call Paul Pearce on 01525 220480 or email [paul@finpru.com](mailto:paul@finpru.com) for a no obligation initial discussion



Financially Prudent (IFA) Ltd is authorised and regulated by the Financial Conduct Authority



**Richard Hunt**  
Professional Drummer  
Composer  
Teacher

[www.richardhuntdrums.co.uk](http://www.richardhuntdrums.co.uk)

- Drum tuition for all ages and standards
- Over 25 years experience

Contact Richard for tuition and all other enquires  
 Mobile: 07540 377902  
 Telephone: 01525 222732  
 Email: [info@richardhuntdrums.co.uk](mailto:info@richardhuntdrums.co.uk)



**Patricia's Mobile Beauty Room**

Beauty & Holistic Therapist  
Covering Beds & Bucks

Call: 07866 126 510  
01525 237 781

[www.pampereexpress.co.uk](http://www.pampereexpress.co.uk)

# Welcome to Kids in Action

supporting children, young people and adults with disabilities and their families

Kids in Action began in Dunstable in 1996 with the simple aim of providing social and sporting opportunities for children with special needs and disabilities (for whom there was very little on offer).

18 years and thousands of activities, parties, trips and holidays later the Charity has just opened its own 9,000 sq ft centre on the Apex Business Centre in Dunstable. "The Base" provides a 40 seater coffee shop, a main hall and dance floor, a



sensory cottage, soft play area, games consoles, pool table, air hockey etc. as well as a dedicated team of staff and volunteers.

Kids in Action offers a Saturday Club for children and young people and a Monday Night Club for over 18s. It runs holiday clubs during school holidays and has caravans at Caister in Norfolk for families to enjoy an affordable holiday

together.

**With such a brilliant facility, and so much space, the charity is keen to welcome new members and families to enjoy what they have to offer at The Base.**

As a small charity, they are also keen to recruit reliable volunteers and always welcome support for what they do.

Kids in Action is for the whole family and parents can bring children with special needs together with their siblings

Check out their new website at:

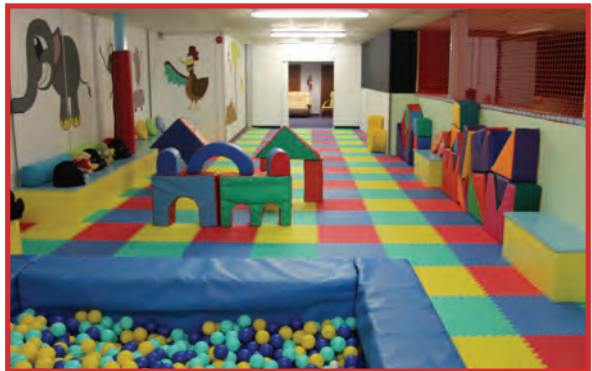
**[www.kidsinaction.org.uk](http://www.kidsinaction.org.uk)**

**Email: [kidsinaction@aol.com](mailto:kidsinaction@aol.com)**

or ring **01582 477762** for more information.

Unit 26 Apex Business Centre, Boscombe Road, Dunstable, LU5 4SB

Registered Charity No 1053470





## Table Top Sale



### 1<sup>st</sup> Eaton Bray & Edlesborough Scout Group:

Are raising funds to extend and improve our Scouting Headquarters.

Date: Saturday 22<sup>nd</sup> November 2014.

Venue: 1<sup>st</sup> Eaton Bray & Edlesborough Scout Group Headquarters, High street, Edlesborough.

Time: 1.30pm - 3.30pm.

Tables cost £5.00 please book early to avoid disappointment, set up time from 12.45pm. To book your table please contact Di Hedges, Assistant Scout Leader, either by e-mail [dianehedges@hotmail.com](mailto:dianehedges@hotmail.com) or telephone (01525) 229652.

Refreshments will also be on sale.

NB. All unsold items need to be removed at the end of the sale.

Eaton Bray Academy's  
**Christmas  
Fayre**

SATURDAY 29th NOVEMBER 2014  
12:00pm to 3:00pm

Exciting gift stalls \* Visit Santa in his Grotto  
Fantastic raffle prizes \* Hot soup & pizza  
Great pocket money games to play  
Cake stall & refreshments \* Face painting  
and much more

# S M Reilly & Son Ltd

## General Builders & Contractors



**Turning Your House into  
a Home Since 1987**

*All aspects of the building  
trade undertaken*

- \*Extensions\*Hard Landscaping\*
- \*Windows, Doors & Conservatories\*
- \*Fitting of Aluminium Bi-fold Doors\*
- \*Kitchen & Bathrooms\*Drives\*
- \*Loft Conversions\*

**01525 221740**  
**07970 637511**

**ALAN BOULT**  
(Light Haulage)



- TRANSPORT ● COLLECTION
- DELIVERY SERVICE
- SINGLE TO MULTIPLE ITEMS
- REGULAR CONTRACTS WELCOME

**Tel: 01296 427182**

**Mobile: 07770 237745**

**Email: [boulton586@btinternet.com](mailto:boulton586@btinternet.com)**

**A McClelland**  
**Pest Control**



**FOR FAST RESPONSE CALL:  
mobile 0777 494 8415 or office 01582 872158**

*specialists in: wasps - bees - ants - hornets  
fleas - cockroaches - bed bugs - pigeons - magpies  
rabbits - rats - mice - moles - squirrels - foxes - mink - feral cats*

**UNMARKED VEHICLES**

**For further information please call  
or email [a.mcclelland\\_pestcontrol@hotmail.co.uk](mailto:a.mcclelland_pestcontrol@hotmail.co.uk)**



**Tel: 01525 221847**  
**[sales@act.uk.com](mailto:sales@act.uk.com)**





**GENERALMECHANICALSERVICESLTD**

*VEHICLE SERVICING AND REPAIRS*

A local, honest reputable garage run by Mart & Ollie  
which is independently approved by "Motor Codes  
Approved Practice" and the RAC

## **MOT's Cars, Vans & 4x4 servicing**

**Tyres  
Cambelts  
Diagnostics  
Batteries  
All mechanical work  
Welding and Fabrication  
Horseboxes  
Specialist in Land Rover**

**Call now for a free quote**

# **01525 222876**

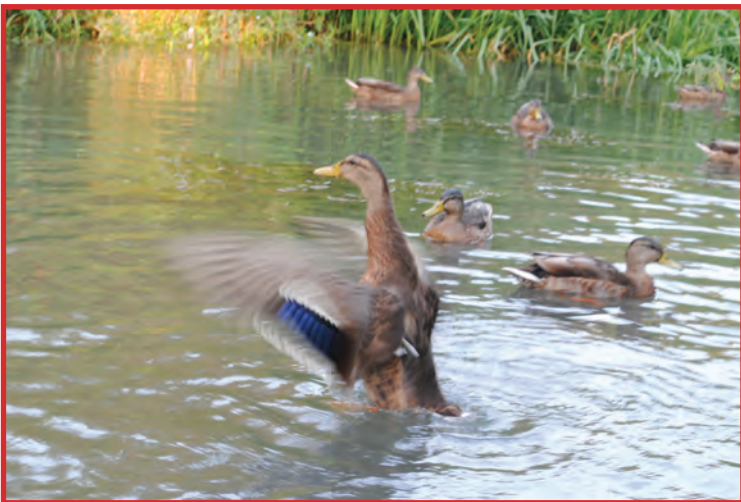
**1 Honeywick Lane, Eaton Bray, LU6 2BJ  
[www.general-mechanical-services.co.uk](http://www.general-mechanical-services.co.uk)  
[reception@general-mechanical-services.co.uk](mailto:reception@general-mechanical-services.co.uk)**

## Village Photos



*Top left: Damson fly by Adrian Welch  
Top right: You lookin' at me...? by Andy Cross*

*Left: A Hoopoe at Willington, Beds (a very rare southern European bird) by Richard Woodhead  
Ducks by Callum Ryan*





David Brown

## Window Cleaning

Quality Reliable Service.

Regular, Occasional or  
Single Visits.

Friendly Free Estimates.

Facias, Guttering & Conservatories.

External Cleaning & Maintenance.

Fully Insured.

Phone **01582 472113**

Mobile **07534 837073**

## D & E HINES

High-Class Butchers

Quality Beef, Pork & Lamb

Grade A Poultry

BBQ & Sausage Speciality

Renowned for 'Bunkers Sausages'

Telephone: 01525 220413

98 High Street, Eaton Bray

## IRON OUT

Complete Laundry Service

Shirt Service

Duvet Cleaning

Ironing

Free collection & delivery from  
home or office

01582 667332 / 07885 320042

Email: ironout@aol.com



STOCKISTS FOR



GUTTER BRUSH

**- All aspects of Pressure Washing -  
Roof Cleaning / Coating specialists**

- Safe cleaning system using rope access
- Roofs cleaned using 'controlled' pressure washing
- 'Cleaning' water recycled

For before and after photos please visit:

<http://www.facebook.com/greatoutdoorsandin>



**0800 298 5883**

[www.greatoutdoorsandin.co.uk](http://www.greatoutdoorsandin.co.uk)



# Dagnall School



**A Buckinghamshire co-educational school**

**For 4-7 year olds**



Dagnall School offers small class sizes, an exciting curriculum, excellent care and support and good links with the local community



Ofsted 2011  
"Pupils are confident,  
very happy at school  
and curious to learn."



Tel: 01442 842473



[www.dagnall.bucks.sch.uk](http://www.dagnall.bucks.sch.uk)

E-mail: [office@dagnall.bucks.sch.uk](mailto:office@dagnall.bucks.sch.uk)

## G.N.C Wall & Floor Tiling

Covering all aspects of tiling from  
Natural Stone & Porcelain to ceramics



[gnctiling@hotmail.com](mailto:gnctiling@hotmail.com)

Providing assurance & attendance through to  
completion of works

For a free full & comprehensive quotation  
please call Colin Bell

07725 033017

01525 222094

## D.A. Windows Doors & Conservatories

23 Church Lane, Eaton Bray, LU6 2 DJ

Tel: 01525 221051 Mobile: 07807 798387

email: [mimcavinder@hotmail.com](mailto:mimcavinder@hotmail.com)

AUTHORISED  
SWISH INSTALLER  
WITH OVER 20  
YEARS  
EXPERIENCE

Installation of PVCu windows, doors and conservatories  
Replacement glass units and window maintenance

QUALITY PRODUCTS - QUALITY WORKMANSHIP -  
REASONABLE PRICES



General building  
maintenance work  
also undertaken  
including:  
Facias and Soffits  
Gutters  
Fencing

Accredited Member of the  
Incorporation of Plastic  
Window Fabricators and  
Installers Limited

# Eaton Bray Village Hall



- ❖ Equipped to support theatrical productions and film shows
- ❖ Large car park
- ❖ Large Kitchen with a six ring cooker, large refrigerator, hot trolley, crockery etc.
- ❖ 3 separate areas to hire to meet your needs and budget
- ❖ For more information and brochure please ring Norman on 07975 797202

- ❖ Superb venue for weddings
- ❖ Fantastic place for parties and dances
- ❖ A must for children's parties, can fit the bouncy castle inside if weather dictates!!!
- ❖ Keep fit groups
- ❖ Ideal for Club meetings or functions





local people working for you

OUR COMMITMENT TO YOU

30day challenge

...TO SELL OR LET YOUR HOME - OR WE WILL REDUCE OUR FEE...

Lettings 01525 371997 Sales 01525 377733  
www.mandmproperties.co.uk

\*30 day challenge is for a limited time only. Terms & conditions apply. Please ask a member of staff for details.



# The Gentleman Gardener

Let your local RHS qualified gardener make your garden beautiful, from simple garden maintenance to total redesign of your garden.

Please call Barry on  
**01525-222451 or**  
**07541196384**

to pop round for a free chat.



All things for your dog, sold locally.

Come and see us in our shop –  
Unit 7B, Sparrow Hall Farm, Leighton  
Buzzard Road, Edlesborough, LU6 2HP.

Or check out our website –  
[www.completecanine.co.uk](http://www.completecanine.co.uk)

And get free local  
delivery at a time  
that suits you.



**Tel- 07854 102669**

**Email- [info@completecanine.co.uk](mailto:info@completecanine.co.uk)**  
**Check web site for opening times.**

We now have resident dog groomer, Julie,  
from Heads & Tails. Phone 07836 240467 for an  
appointment.

## Dog Behaviour & Training



# LawesPaws

Your dog on the right track

Professional help for you and your dog

Owning your dog should be a joy – if you are not  
finding this the case - let LawesPaws help

**Vicky Lawes ACFBA MGoDT (MT)**  
CANINE BEHAVIOUR CONSULTANT & MASTER TRAINER

Experienced, professionally trained & in  
the comfort of your own home

Web: [www.lawespaws.co.uk](http://www.lawespaws.co.uk)  
Mob: 07765 287176  
E: [vicky@lawespaws.co.uk](mailto:vicky@lawespaws.co.uk)

# Edlesborough School & Pre-School



*Pupils' behaviour is outstanding...*

*The environment for learning is exciting and stimulating...*

*A real strength of the school is pupils' attitude to their learning .*

*Ofsted 2013*

For more information about our School, Pre-School and Before and After School facilities, visit our website at [www.edlesborough.bucks.sch.uk](http://www.edlesborough.bucks.sch.uk)

Please contact the school on 01525 220431 to arrange a visit.



# Protecting what's important

## MJ Security Systems Ltd

### MJ Security Systems

Contact Us For More Information

Unit 4, Arianne Business Centre,  
Blackburn Road,  
Townsend Industrial Estate,  
Houghton Regis,  
Bedfordshire,  
LU5 5DZ

Please call for a free quotation

**T: 0800 0856126**

**E: info@mjsecurity.co.uk**

**W: www.mjsecurity.co.uk**



We also specialise in:

- IP Cameras
- Intruder Alarms
- Access Control
- CCTV & Monitoring
- Door Entry
- Covert Cameras
- Security Lighting



FROM ONLY  
£439.95+VAT  
Products and  
Installation



**Kit includes:**

1 x Wireless Door Contact, 2 x Wireless  
P.I.R., 1 x Wireless Sounder, 2 x Remote Set  
and Unset Fobs.

**Stylish • Wireless • Secure**



Local family run business - Not a franchise

All chemicals used are Eco-friendly, non-toxic, non caustic and non allergenic  
**All work guaranteed and fully insured**

All products are Child, Pet and Pregnant Safe

- Ovens & Hobs
- Extractor Hoods
- Microwave Ovens
- Agas
- Fridges
- Carpets
- Rugs
- Upholstery
- BBQs
- Freezers



**01525 22 19 22 or 0800 122 3393**

**www.ecotechovenandcarpetcleaning.co.uk**

**info@ecotechovencleaning.co.uk**



# RD ELECTRICAL

Specialising in all types of Electrical and Air Conditioning installations including:

- ◆ Inspection and Testing
- ◆ Garden and security lighting
- ◆ Energy efficient lighting
- ◆ Re-wires
- ◆ Specialist lighting – bespoke designs
- ◆ Kitchen and Bathroom specialist

Air conditioning throughout your home  
All work guaranteed.



**Call Richard on:**  
**01525 221475**  
**07932 759680**



For a no obligation quote

**TEL: 01582 667924**



13185

**"Good reputations take years to build"**

## ***GRAHAME PRATT***

**Plumbing & Heating Engineers**

Plumbing & Heating  
Bath & Shower Room Design and Installation  
Ceramic Floor & Wall Tiling  
Kitchen Installation  
Small Building Works

**[www.grahameprattplumbing.co.uk](http://www.grahameprattplumbing.co.uk)**

Email - **[enquire@grahameprattplumbing.co.uk](mailto:enquire@grahameprattplumbing.co.uk)**

# M . P . S

Maintenance & Property Services

- KITCHENS AND BATHROOMS
- PAINTING AND DECORATING
- PROPERTY RENOVATIONS
- PLASTERBOARDING
- FENCING

FREE ESTIMATES

NO CALL OUT CHARGE

NO JOB TOO SMALL

LOCAL

Contact:- Julian

**07958 306301**

E-mail – [mps@mustoe.co.uk](mailto:mps@mustoe.co.uk)

[www.mustoe.co.uk](http://www.mustoe.co.uk)



## Established Village Dog Grooming Service

Professional and Affordable  
Large breeds welcome

Trained in Hand Stripping  
Nails, Ears and Glands included

Contact Ulrika Tel 01525 211592  
5 Mill Road, Stanbridge, Beds. LU7 9HX  
[www.abfabgrooming.co.uk](http://www.abfabgrooming.co.uk)

## Spinney Landscapes & Gardening Services

*All Aspects of Grounds Maintenance*

Weed Control • Driveways & Patios  
Lawn Care & Scarifying • Fencing  
Turfing • Tree Work  
Snow Cleaning & Gritting

**Tel: 01582 872084 Mob: 07876 500292**

**Email: [chambo.1628@btinternet.com](mailto:chambo.1628@btinternet.com)**



## Francis House Preparatory School



## The Best Start They Could Wish For

AT FRANCIS HOUSE WE ARE PROUD to offer our pupils a safe, caring and happy environment that fosters a love of learning.

Each one of our pupils is able to reach their true potential whilst enjoying a broad range of academic subjects, sporting and gymnastic opportunities, together with a wide range of extra-curricular activities including dance and music. Teamwork and achievement are encouraged and rewarded, as are friendliness and generosity.

FRANCIS HOUSE is a Hertfordshire town school with a countryside setting overlooking the Chilterns. It is positioned on the edge of Tring but with easy access to the A41. Francis House is a day preparatory school for girls and boys between the ages of two and eleven whereour Nursery and Kindergarten (Pre-Preparatory) are an integral part of the school.

FRANCIS HOUSE SCHOOL NURSERY now takes boys and girls from the age of two years during term time from 8.00 am – 6.00 pm.

Our dedicated and experienced staff, maintain an excellent staff/pupils ratio, with small class sizes that enable our pupils to properly prepare for the rigours of the next stage of their education.

Aylesbury Road, Tring, Herts HP23 4DL

T: 01442 822315 E: [info@francishouseschool.co.uk](mailto:info@francishouseschool.co.uk)

W: [www.francishouseschool.co.uk](http://www.francishouseschool.co.uk)

| An Independent Day School for Boys and Girls aged 2 to 11 years |

# Eaton Bray Parish Council

## Highlights of the Meeting Minutes of Eaton Bray Parish Council Held on Monday 1st September 2014 from 7:30pm at the Coffee Tavern

### Central Beds Council (CBC)

Website: [www.centralbedfordshire.gov.uk](http://www.centralbedfordshire.gov.uk)

Customer Services: 0300 300 8302 / Email: [customers@centralbedfordshire.gov.uk](mailto:customers@centralbedfordshire.gov.uk)

A detailed list of services provided by CBC can be found by visiting:

<http://www.eatonbray.com/parish-council/files/central-beds-a-to-z-of-services-2014.pdf>

- The Silver Line: this is a confidential helpline for older people, to offer help/friendship/advice. Most callers are over 65 (but there is no age limit) – the service is available on 0800 4708090 any time of day/night and helpline staff will be happy to offer information or simply have a chat. This service relies on donations and volunteers, to find out more call 020 72242748.
- Local Roads: CBC has recently launched a monthly email bulletins alerting people to work on local roads. These bulletins can be viewed on the CBC website.

### Bedfordshire Police:

Reported Crime - Year to Date

RECORDED CRIME		
Crime Type	01/08/13	01/08/14
	To 31/08/13	To 31/08/14
Domestic Burglary	0	1
Burglary Other	0	2
Vehicle Crime	3	3
Other Theft	1	0
Criminal Damage	1	1
Drugs	0	0
<b>TOTAL</b>	<b>5</b>	<b>7</b>

ASB INCIDENTS	
01/08/13	01/08/14
To 31/08/13	To 31/08/14
6	3

Three reported anti-social behaviour incidents for August. The 1st incident consisted of a large group of around 30 teenagers making noise, possibly having a party. Two incidents refer to a large party occurring and creating a lot of noise, officers attended.

### News from the team

(2.1) Vehicle crime, visit the following link where you can find some crime prevention

advice- [http://www.bedfordshire.police.uk/pdf/advice\\_vehicle\\_crime\\_cro2012.pdf](http://www.bedfordshire.police.uk/pdf/advice_vehicle_crime_cro2012.pdf)

(2.4) If you wish to contact your Local Policing Team then please call 01582 473411 or email [LPT.LeightonBuzzardLinslade&Rural@bedfordshire.pnn.police.uk](mailto:LPT.LeightonBuzzardLinslade&Rural@bedfordshire.pnn.police.uk)

All information is confidential and no names will be disclosed. Please remember if you need to contact the Police: Non-emergency call 101 / All emergencies 999

### Village Beautification

If you live in the parish and are interested in the beautification of the village then please contact Eaton Bray Parish Council and join the EB Bloomers.

### Speedwatch

The Parish Council are looking at putting together a speed watch group to monitor traffic speeds on the parish roads and are looking for volunteers. If interested please contact Cllr. Mark Tomkins on 07810 753878, between 9am-8pm or email [councillormarktomkins@gmail.com](mailto:councillormarktomkins@gmail.com).

### Next Eaton Bray Parish Council Meeting Date:

Monday 3rd November 2014 from 7:30pm at The Coffee Tavern (1st floor)

**Parish Council Website:** [www.ebpc.co.uk](http://www.ebpc.co.uk)

For full detailed copy of the minutes for Eaton Bray Parish Council please visit the Parish Council website.

A hard copy of minutes can also be viewed on the Parish Council's notice board at The Coffee Tavern.

✍ Heidi Head, Parish Clerk & RFO

Email: [clerk@ebpc.co.uk](mailto:clerk@ebpc.co.uk) - Telephone/Fax:

01525 221464 - Website: [www.ebpc.co.uk](http://www.ebpc.co.uk)

Office Hours: Tuesday/Thursday/Friday 09:30-13:30hrs [messages can be left on answerphone]



# Eaton Bray Lawn Tennis Club

Do you remember from last month's article, that I promised you an extended report on our September club Finals day, with interviews with the winners and runners up, performance analysis graphs, player assessments and full match statistics game by game and set by set? Well I've had a bit of a problem, in that I wasn't there, being in bed with the 'flu. Proper 'flu that is, not mamby pamby man 'flu. I couldn't even do the barbecue, that's how bad it was! So all my best laid plans went to pot, and you'll just have to make do with a summary of the senior tournament's winners which I've managed to scrounge off someone who was actually there. Trying to find an EBLTC member with a good memory isn't easy, so if there are any inaccuracies, it's absolutely nothing to do with me!

In the men's singles, club stalwart Darren Kerins beat relative newcomer Oliver Thorne 6-2, 6-1 to win his 16th singles title, and, amazingly, his 29th title overall, having in previous years won in both men's and mixed doubles finals. His first club title was back in 1993, so he's been going strong for 21 years now. I'm sure he'll be back next year to try for his 30th title (he'll have to get past me, first...)! In the men's doubles, Peter Hale and Roy Cook overcame Dave Provan and Stuart Adolph in a closely fought match, winning in two sets, 6-4, 6-3. This was Roy's second doubles title, having won last year, again with partner Peter. For Peter, it was his fourth club title, his last one being in 2003 in the mixed doubles. Prior to that, his other two victories came in our inaugural year, 1989, in the men's singles and doubles. Another player who's been playing at a high level for 25 years (although some would dispute the definition of 'high') :-)

In the ladies doubles, Jane Wigley and Nikki Baylis beat Jane Cross and Carole Thorp in another close match, 6-4, 7-6. This was Jane Wigley's second ladies title, her last one being in 2005. She has also won three mixed doubles titles, including this year's, so she has five altogether. For Nikki, who was voted 'most improved player' at our club last year, it was her third successive doubles title, so she is staking her claim for forthcoming years! Oh, and no Nikki, it's not like the World Cup, you don't get to keep the trophy for ever if you win it three times in a row!

In the final match, the mixed doubles, Jane Wigley and Peter Hale took on Jenny Baines and Ben Johnson. Unfortunately, with the match nicely balanced at 3-6, 5-2, and so probably heading for a third set, Jenny picked up an injury and was unable to continue. The match was conceded to Jane and Peter, thus securing Jane's aforementioned fifth title, and also bringing up Peter's fifth overall. As Peter said, you wait 11 years for a title and then two come along together! We all wish Jenny a speedy return to fitness; she herself is an 11 times champion, and there's surely more to come....

So there you are, not a graph, chart or assessment in sight, but a good day was had by everyone who played and supported. Well done to all contenders, and we're now all looking forward to our winter competition, the Mike Venn trophy, which will see us taking to the courts over the chillier months to battle our way to another trophy. My sideboard at home is not exactly creaking under the strain of trophies, there was my own mixed doubles victory in 2012 (OK, so it was with Darren Kerins, but he did tell me afterwards That I played like a rock. When I asked what he meant by

that, he said that I never moved)! The only other trophy is my 'Initiative Cup' which I was awarded in 1979 at school, basically because I founded their photographic society, but was useless both academically and at sport, and they felt sorry for me. I still polish it every night.

Finally, a quick mention of our Mystery Player, who, by the end of September, had clocked up 229 court appearances. Surely he should have been locked up by now! His goal at the beginning of the year was to play 250 times during 2014, but it looks like he could have met that target by the time you read this. Knowing him, he will be aiming for the big 300 by the end of the year, probably with an accompaniment of two very tired legs and a wife who's forgotten what he looks like. More news on his progress next time!

For any further information about the club, including when we get together for our social tennis sessions up at the School Lane courts, or our various activities, you

can visit our website at [www.ebltc.org.uk](http://www.ebltc.org.uk); Alternatively please call Chairman Stuart Adolph on 07773 816320, Coach Sara Leavy on 07561 571578, or if they're all out and I'm not polishing my cup, then me, Andy Cross, on 07783 667338.

**STOP PRESS:** Just in are the results of the Junior club competition held on the same day. There were no less than nine finals, illustrating what a strong Junior section we have at EBLTC. The results went as follows:

Mini red a:	Sam Johnson
Mini red b:	Hannah Johnson
Mini orange:	Lewis Brown
Mini green:	Nicholas Clarke
U14 boys:	Thomas Noithip
U14 girls:	Rosie Dickson
U16 boys:	Max Freebairn
U16 girls:	Holly Booth
U18 boys:	Max Freebairn

Congratulations again to all competitors!

# Town Farm

# ART SHOW

Paintings, Illustration  
Ceramics, Glass, Woodcraft  
Woodcarving, Stonecarving  
Printed Textiles, Jewellery  
[www.townfarmartshow.blogspot.com](http://www.townfarmartshow.blogspot.com)

Festive art show in Cheddington:  
hand-crafted, high quality Christmas gifts  
plus mulled wine, Christmas cake & Belgian waffles

**ONE WEEKEND ONLY**

Friday 28 ~ Sunday 30 November  
10am ~ 5pm

6 Town Farm, Cheddington, Nr Tring, LU7 0TT  
PLEASE PARK ON HIGH STREET ~ NOT IN TOWN FARM

Free entry - Donations for refreshments  
in aid of Rennie Grove Hospice Care

# Edlesborough Parish Council News

## Including Edlesborough, Dagnall and Northall

### **New Councillor**

The Parish Council are very pleased to welcome Cllr Robert Pratt to the council. Cllr Pratt was co-opted onto the council during the September meeting and will be representing the Parishioners of Northall.

### **Cow Lane Development Application**

Cllr Williams and District Council Poll both attended the AVDC Strategic Management Development Committee. Below is a short summary of the discussions and representations made in response to the application for 30 New Houses in Cow Lane, Edlesborough.

Despite the spirited efforts of District Councillor Chris Poll, Parish Councillor Alan Williams and resident Elizabeth Braiden, who spoke to oppose the application, the committee agreed to the development going ahead subject to terms known as Defer and Delegate. This means that the issues itemised below needed further work but, in principle, the task of ensuring that these problems were overcome by the developer was delegated to the Planning Department to resolve. The assumption is that they will be resolved to their satisfaction despite our considerable concerns with the foul drainage/sewerage issues.

#### *Surface Water drainage*

The local water board objected to the development. The developer said they would solve the surface water drainage problem without specifying how. The committee put this item as one needing resolution as part of the development. The implication was that the developer needed to present a plan before development started but the solution did not have to be implemented before development commences.

#### *Foul Drainage/Sewerage*

There was considerable sympathy for the situation of the local residents and much questioning about solutions to the extent that at one point the discussion centred on the need to have the sewerage system reconfigured to eliminate 90 degree bends etc. All previous applications for this site had been opposed by Anglian Water. For this one however Anglian has said the system has the capacity.

#### *Highways*

The amended plan calls for a widening of Cow Lane opposite the Doctor's surgery. However the resident of the adjacent house has challenged this as he believes the land that they want to take does not belong to the County Highways Dept. This issue has to be resolved in the same way as above. It does not have to be finalised before development can begin.

One other issue that needs some clarification but is not an issue that affects planning is the requirement to provide Affordable Housing as part of the development.

### **Pavilion**

ECSC (Edlesborough Community Sports Club) along with EPC submitted a pre-application to Aylesbury Vale District Council late July. This was to test the waters and see what response they would have. As a result of the positive feedback the Council has now commissioned TrioPlus to provide consultancy services in furtherance of the proposals to develop a new Pavilion.

For more information please follow the ECSC at [www.facebook.com/pages/Edlesborough-Community-Sports-Club/819620651391250?fref=ts](https://www.facebook.com/pages/Edlesborough-Community-Sports-Club/819620651391250?fref=ts)

### **Streetlights**

Please see the separate article in this

addition of Focus about our plans for new streetlights in the Parish.

Several lights have been reported to the technician for repairs. Please remember to report any faulty streetlights to the Clerk (details below) NOT AVDC or Bucks CC.

### **Parking**

Following complaints received by the Council regarding inconsiderate parking. Parishioners are asked to remember to park considerately, ensuring pedestrians, parents with pushchairs and those using disability scooters can use the footways (pavements) and that junctions are not blocked and emergency vehicles can pass without difficulty.

### **Overgrown Trees & Hedging**

The Council requests that all Parishioners ensure that their hedges, bushes and/or trees do not encroach onto the public footway. Please cut back any overgrown shrubbery to your property boundary allowing free access to footway users.

### **Electoral Roll**

District Cllr Chris Poll reported that the Parish has a good record of returning voter registrations. Council staff will again be calling in person to those that have not registered to vote, there is a legal requirement to register so for any Parishioner who has not yet registered please do so. Information can be found at [www.gov.uk/register-to-vote](http://www.gov.uk/register-to-vote)

### **AVDC Webcast**

AVDC have now started webcasting council meetings. At present just full council meetings but this may soon change to include others as well. For anyone interested the first such webcast can be seen via [http://connect.aylesburyvaldc.public-i.tv/site/player/pl\\_v7.php?a=146382&t=&m=flash&l=en\\_GB](http://connect.aylesburyvaldc.public-i.tv/site/player/pl_v7.php?a=146382&t=&m=flash&l=en_GB)

### **Remembrance Day Service**

This will take place at *Eaton Bray Church*

on Sunday 9th November.

The regular Sunday Service will begin at 9:30am followed by the *Act of Remembrance at Eaton Bray War Memorial 10:50am – 11:15am*

### **Edlesborough Parish Council Meeting**

This next meeting will be held at Edlesborough Memorial Hall on Thursday 20th November 2014, commencing at 7:30pm. Minutes of previous meetings can be found on the website [www.edlesborough-pc.gov.uk](http://www.edlesborough-pc.gov.uk)

### **Contact Information**

#### **Clerk to Edlesborough Parish Council:**

Clerk: Penny Pataky 01525 229358

Email: [clerk@edlesborough-pc.gov.uk](mailto:clerk@edlesborough-pc.gov.uk)

#### **Manager of Edlesborough Memorial Hall, Pavilion, Playground & Green:**

Penny Pataky 01525 229358

Email:

[manager@edlesborough-pc.gov.uk](mailto:manager@edlesborough-pc.gov.uk)

#### **Responsible Finance Officer/Planning to Edlesborough Parish Council:**

Lin Sargeant: 01525 220859

Email: [rfo@edlesborough-pc.gov.uk](mailto:rfo@edlesborough-pc.gov.uk)

Website: [www.edlesborough-pc.gov.uk](http://www.edlesborough-pc.gov.uk)

Facebook:

[www.facebook.com/EDANParishCouncil](http://www.facebook.com/EDANParishCouncil)



## **Dunstable & District Local History Society Tuesday 11th Nov, 7.45pm Milk Bars and Music**

Colin Oakes returns to the society to talk about London in the 50s and 60s.

Tommy Steele is bound to feature!

**Methodist Church Hall, Dunstable  
Visitors always welcome £3**

Northall & District Age Concern Wednesday Club Committee and Members would like to thank all the businesses that supported us with donations for the Harvest Auction.

We also want to thank all the individual donors and generous bidders who contributed to the event.

**TOGETHER WE RAISED £2400. THANK YOU ALL**

Andrew, Alto window cleaning	Janes
Ashridge Golf Club	Lantmannen/Unibake
Café Masala	Luton Town Football Club
Colin, Deep- Clean	Mark & Helen, MacDonald Hotel & Cabins
Eaton Bray Shop	Mead Open farm
Edlesborough Autos	Mentmore Golf
Edlesborough Flowers	M K Dons Football Club
Edlesborough Post Office	NG Autos
Garden Scene	Park Farm Fisheries
Giblin Estate Agent	Silver Arrow Archery
Grove Lock	St Judes
Grove Farm	Swan Pub, Northall
Happy Valley	Thai Traditional Massage for Ladies
High Street Hair	The White Horse
Hines Butchers	Travellers Rest
Icknield Farm, Kelly Bronze Turkey	Westrope Bros

## Appledown's Rescue Dog of the Month



This young man is Bammy, a one year old staffie cross. He is sociable and affectionate with people and he could live with a female dog.

Bammy enjoys a good walk and is quick to learn so he will respond well to training. He laps up attention and would love to be at the centre of family life!

If you feel you could offer Bammy, or any of our other dogs, a loving and secure home please call in at the kennels any day between 10 a.m. and 4 p.m. Our staff will be happy to offer advice and information.

Please note that we have restrictions on rehoming dogs to families with children under 7 years of age, so please ask for details.

**Date for your Diary!** – Dust off your blue suede shoes and join us for our **Rock ‘N Roll Night!** on Saturday 15th November, 7.30 p.m. at the British Legion Club, Heath & Reach, Leighton Buzzard. Tickets £10 (including light supper) available from Appledown or [jen7dean@hotmail.com](mailto:jen7dean@hotmail.com) Appledown Rescue & Rehoming Kennels, Harling Road, Eaton Bray, Beds LU6 1QY.

Call 01525 220383 or e-mail [appledown.kennels@btinternet.com](mailto:appledown.kennels@btinternet.com) (Reg Charity No. 1116848)



# Dagnall Community Choir



## Christmas Music Preparations

Our Autumn Concert has been safely negotiated and we would like to thank all those of you who joined us and we hope that you too had an enjoyable evening. This occasion saw the debut of our new - not so much "boy band" - more "geyser band" - whose preparations had been kept secret from our sopranos and altos. So it came as a pleasant surprise to some or, more likely, nasty shock to most, to hear our version of a sea shanty.

Having spent all Summer learning new songs for that Concert, we are now fully engaged on learning some beautiful Christmas music. This is in preparation for a busy Festive Season with several local appearances including our own **FREE CHRISTMAS "EXTRAVAGANZA" at DAGNALL VILLAGE HALL on SUNDAY AFTERNOON 7TH. DECEMBER.**

We have decided to make no charge for this concert but we will not be embarrassed to accept contributions towards expenses which will not be refused, and any excess will be donated to charity.

Meantime, we have appeared in a short

concert in Luton and we are, once again, looking forward to the pleasure of being part of "The Poppy Prom" on November 8th. This is always a special occasion, both moving and joyful, and we always feel honoured to be asked to play our part.

We are already looking forward to the New Year by considering which new songs to bring into the repertoire.

None of this would be possible without :-

A) The constant dedication and cheerful support of our highly valued members, including some more musically gifted than others, who turn up every Monday at Dagnall Church, pay their £1 including half time refreshment, and fill our little church with beautiful sounds.

B) The skill of Judy Smither our patient accompanist.

C) The sheer ability of Michelle Garrard, our long-suffering musical director, who leads us with sympathetic patience and encouragement to achieve more than most of us would have thought possible.

We hope that we may have the opportunity to entertain you in the near future.

## St Mary's 100 Club

Congratulations to the following winners:

### September

1st prize Gordon Gray (£62.00)  
2nd prize Bruce Rogers (£37.20)  
3rd prize Helen Potton (£24.80)

### October

1st prize Jean Bates (£62.00)  
2nd prize Ali Thorne (£37.20)  
3rd prize Chris Banks (£24.80)

If you would like to join the 100 Club please collect a form from [www.stmaryseatonbray.org.uk/Groups/100-club](http://www.stmaryseatonbray.org.uk/Groups/100-club) or from St Mary's Church, Eaton Bray.



## The National Trust South Beds Assn

**Wednesday 5th November**

**The Founders of the National  
Trust & Their Legacy, Emphasis  
on Sir Robert Hunter**

*Bed Cowell, East of England  
Regional Director, National Trust*

**Salvation Army Centre,  
Bull Pond Lane, Dunstable**

**Visitors are welcome at £1**

*For further information  
phone 01582 527790*

# Edlesbray Leisure Fellowship (ELF)

Hello everyone,

Autumn has arrived and time to bring out the warmer clothes. Gardens are still attempting to show their blooms. Spring bulbs and plants are being purchased to be planted with hopes for good weather to come in 2015.

We all enjoyed the lunch outing to the Swan, Northall on October 9th.

The walk arranged for September 22nd was cancelled and the group hope for better luck in October and November.

We thank Graham for arranging our visit to The RAF museum at Hendon on October 30th

Our next meeting at the Coffee Tavern

is on Thursday November 27th. It is our annual Sherry and Mince Pie meeting hosted by Val and Alan. Tea and Coffee will also be available. There will be the usual chat about our future plans.

Our December Christmas Lunch out has now been arranged on Thursday 11th at The Cock Inn, Wing. If you wish to take part there is a list with the menu in the North Porch of the Eaton Bray Church for you to sign or you can contact Val.

## November Dates

Monday 24th Nov: Walk from Eaton Bray Church 10am

Thursday 27th Nov: Sherry & Mince Pies Meeting at the Coffee Tavern 10:30am



**Colin & Linda**



**CHRISTOPHER PALLET**

**Edlesborough Estate Agents**

**My family and I wish to express our very grateful thanks for all your great help and consideration over the years letting and selling our properties.**

**Family Möller/Hawkins**



---

# Edlesborough

Post Office & Stores

---

## YOUR LOCAL VILLAGE STORE

.....

### POST OFFICE HOURS

**Mon to Fri – 9am to 5.30pm / Sat – 9am to 12.30pm**

No lunchtime closure. Closed on Bank Holidays

- Inland and Overseas Parcel Services
- Road Tax
- Foreign Currency
- Moneygram
- Personal & Business Banking (applicable accounts)
- Bill Payments

### SHOP HOURS

**Mon to Sat – 5am to 8pm / Sunday - 5am to 1pm**

Open Bank Holidays to 5.30pm

### Home Newspaper & Magazine Deliveries

Edlesborough, Eaton Bray, Totternhoe, Slapton, Northall, Stanbridge,  
Tilsworth, Marsworth, Ivinghoe

- National and Health Lottery
  - Free ATM
  - Monthly Promotions in Store
  - Mobile Phone, Electric and Gas Top Ups
  - Fresh Bread and Cakes (orders taken)
  - Fresh Fruit, Veg and Local Produce
  - Off Licence (offers in store)
  - Greeting Cards and Stationery
  - Laundry and Clothing Repair Service
- .....

High Street, Edlesborough LU6 2HH

T. 01525 220381 E. [edlesboroughstores@hotmail.co.uk](mailto:edlesboroughstores@hotmail.co.uk)



## Registered Freelance Riding Instructor

Just moved into the area and teaching within a 10 mile radius of Edlesborough.

Teaching private clients on their own horses.

Experienced teaching all levels of ability, age and discipline.

Fun, enthusiastic and confidence giving.

Kate Broadway BHSAI

01525 792562 07841 053159

## JAMES FALCON-CROSS LANDSCAPING AND OUTDOOR LIVING DESIGN



ALL ASPECTS OF  
LANDSCAPING UNDERTAKEN

INCLUDING FENCING,  
TURFING AND RAISED BEDS

TIMBER STRUCTURES  
DESIGNED AND BUILT

VEGETABLE AND HERB  
GARDENS

BESPOKE WOODEN FURNITURE

FREE ITEMISED QUOTATIONS

FULLY INSURED

01442 843258 / 07769 901325

ONECROSSFALCON@GMAIL.COM

## Bill Bowman Photography

Weddings - CD from £500  
to stunning Italian Albums

Family Portraits,  
Babies, First  
Birthdays,  
Parties, Pets

Free sittings  
Packages  
from £25



Tel: 01582 873338  
email: bill@hccs.co.uk  
www.billbowman.co.uk  
Teelands, Oldhill Wood,  
Studham, Beds LUG 2NE

## Leighton Aerials

Established 1970

For all your aerial and  
satellite needs call Colin  
on 01525 374742





# EDLESBOROUGH TENNIS CLUB

Website by Jupiterwill

[www.etctennis.org](http://www.etctennis.org)

Play tennis    Have fun    Socialise    Feel good    Join our club

Join via the website, or call Iona McLean-Hall on 01525 220562 for details

Monthly draws

## New 100 Club

Spend £2 to spend a penny

In aid of toilets and other improvements at St Mary's Church, Eaton Bray



Contact: [eatonbraychurch@aol.com](mailto:eatonbraychurch@aol.com) or telephone: 222691

## Eaton Bray Academy

*The staff work exceptionally well as a team to promote children's welfare, learning and development and to make sure everyone enjoys their time at the pre-school. Ofsted 2012*



*Children benefit from the abundant shared resources, access to school assemblies, the information technology suite and the extensive outdoor facilities. Ofsted 2012*

### Pre School



**How many Pre Schools do you know that are part of the Main School?** Well, EBA is *one* School!

All the children wear School uniform, have their own book bag, can attend clubs and even eat our delicious School dinners, cooked on the premises by our own School cooks.

.We believe that quality Early Years education is essential; it is on this that everything is built.

We offer a caring, happy, secure and stimulating learning environment in which the children thrive.

**Come and have a look!**

Tel. 01525 220468 or email [admin@eba.ec](mailto:admin@eba.ec)

*Children clearly benefit and thrive as the accommodation, equipment and resources are well suited for their purpose and conducive to learning. Improvements to the premises and the outdoor area give children the confidence to explore and help all aspects of their development. Ofsted 2012*

# CHIMNEY SWEEP

Local & Est. Brush n Vac  
Friendly, Clean and Efficient

Call **KEVIN HING** on

Tel: 01525 371592

Mob: 07940 528897

[www.khing.co.uk](http://www.khing.co.uk)

Member of NACS



## Cheeky Cherubs Childcare

Tel: 01442 843 846

Mob: 07774 323 439

Children of all ages welcome, from  
birth right though to their teens!

**OFSTED Registered & DBS Certified**

**Nicola Fowler**



**Book Now!**

tel: 01525 223042

mob: 07738 097670

### Dog Walking, Running & Boarding

In Edlesborough, Eaton Bray, Dagnall, Ivinghoe, Northall



#### Dog Walking & Dog Running

Whether your dog needs a one off walk, extra exercise over the weekend or a regular walk, I'm happy to help. I can pick up, walk and drop off your dog on a daily, weekly or ad-hoc basis. I also offer dog running for dogs who need more energetic exercise.

#### Dog Home Boarding

Have your dog come and stay with me in my homely cottage in Edlesborough, where they'll get long walks with lots of love and attention and will be looked after as if they were my own.



**BOOK NOW - contact Kaely on 07738 097670.**

[www.kaelysdoggyhotel.co.uk](http://www.kaelysdoggyhotel.co.uk)



# Beau

HAIR AND BEAUTY SALON

- Unisex hair salon
- Hair Extensions
- Nail Bar
- Wedding, Prom Hair Styling
- Express Eyelash
- Girls Glamour Parties
- Accessories
- Loyalty Cards

**01525 220926**

*3 Summerleys, Edlesborough LU6 2HR*

For lots more offers and news about what is happening follow  
and like us on Beau Hair & Beauty @beausalon

CND  
Shellac™

KOLESTON  
PERFECT

O.P.I

Beauty  
Works  
CELEBRITY  
CHOICE

ghd



# PLUMBING AND HEATING

FOR ALL YOUR PLUMBING, HEATING AND GAS REQUIREMENTS

NOSSITER AND BARNETT LIMITED  
PLUMBING AND HEATING

CONTACT MATT OR JAMIE  
TEL 01525 229524 MOB 07802 270427



Home or Business  
IT Support



Visit Our Website at [www.hobit.co.uk](http://www.hobit.co.uk)

Laptop Repair • Virus Removal • Data Recovery  
Laptop Screen Replacement • Data Transfer  
Wired & Wireless Networks • Broadband Setup  
Backup Solutions • Printing Problems  
Tune Ups • 1:1 Training • Email Problems  
Ipad & Iphone Connectivity Issues  
Computer Upgrades • Free advice

**Call now 01525 378127 or 07702 80 70 90**  
**RELIABLE - PROFESSIONAL - LOCAL**

## LOCKED & SECURE

Keeping your Family, your Home and your Business Protected

**WE SPECIALISE IN THE FOLLOWING :**

-  ALARMS
-  LOCKS
-  CCTV
-  ACCESS CONTROL
-  SAFES

**WE ALSO OFFER**

-  Free Security Audits  
& Crime Prevention Talks



Please Call NOW or visit our Website for more info  
**FOR ALL OF YOUR SECURITY NEEDS**

# 01908 483233

Serving Northamptonshire, Buckinghamshire, Bedfordshire,  
Hertfordshire and South Lincolnshire.

 [www.lockedandsecure.co.uk](http://www.lockedandsecure.co.uk)  
[info@lockedandsecure.co.uk](mailto:info@lockedandsecure.co.uk)

# Come for Coffee at St Mary's

For a warm  
welcome and a  
cheering cuppa  
on the first  
Saturday each  
month in  
St Mary's Church  
Eaton Bray  
10.00am - midday



Are you an elderly or  
housebound resident ?

Would you enjoy a  
monthly (free delivery) fish  
and chip supper ?



If your answer is 'yes' to either of the above questions then please do get in touch.

We run this scheme on the last Friday of every month but need your orders no less than 48 hours prior to this. We have a voicemail facility on our phone if we are not there to speak to you directly. All messages will be confirmed back to you so you know your order has been received.

Please call on **01525 229 656** to place your order

*Ordinary people doing amazing things*







**Some comments from our recent Ofsted report:**

Children are consistently offered a stimulating range of activities and opportunities which enable them to make good progress towards the Early Learning Goals.

Staff have a good understanding of creating a safe and welcoming environment . . .

Staff support children well and encourage them to be active in their learning and to think critically.

We are a committee run playgroup operating five mornings a week 9:15 – 12:15 for children aged 2 to school age.

**If you would like to find out if your child would be happy here, please phone our Playgroup Leader, Ann Tobin on 07816 358 342.**

[www.dagnallunderfives.co.uk](http://www.dagnallunderfives.co.uk)

Wednesdays  
1:00pm to 2:45pm  
(During term time)  
Eaton Bray Village Hall

**Cheeky monkeys**  
under fives play time

£1.50 per adult / £1.00 per child / 50p under 1yr

creative play    singing  
stories        baby corner  
craft         juice & biscuit  
tea or coffee    and more!

Come along,  
make new friends  
and join in  
the fun!

**Sheplegh Court  
Nr Dartmouth, South Devon**

Lovely two bedroomed apartment in country house set in 30 acres of gardens, woods and parkland. Facilities available include:

- Heated outdoor swimming pool with sun terrace and barbecue area (summer only)
- Conservatory overlooking the gardens and parklands
- All weather tennis court.
- Snooker room with full size table
- Small indoor pool, jacuzzi and sauna

Secluded position on outskirts of award winning village yet within 3 miles of beaches and Dartmouth Golf and Country Club. Available for weekly letting or for three plus days out of season.

**For further details please telephone 01525 220957 evenings and weekends**

**eww**

E W Wallace & Co  
Chartered Accountants  
Tax Consultants  
Business Advisors

Small business specialists serving  
Beds, Bucks & Herts

- Annual accounts
- Tax returns
- Self-employed
- Limited companies
- Small business specialist
- Sage Accounts expertise
- Prompt, personal service
- Value-for-money fees
- Free initial consultation

**01525 220826**

**www.ewwallace.co.uk**

# HARMONY

## Plus

### EXCITING NEW UNISEX HAIR & BEAUTY CLINIC

3D - LIPO (INCH REDUCTION)  
NON - SURGICAL FACE LIFT (CACI)  
SKIN PEELS/SKIN TIGHTENING  
MICRODERMABRASION  
TEETH WHITENING  
BIO SCULPTURE & OPI GEL NAILS  
BROW/LASHES BAR  
TANNING  
SPA/PAMPER PARTIES  
PRINCESS/PARTIES  
HAIRDRESSING EXTENSIONS  
BRIDAL HAIR/MAKEUP  
MALE GROOMING

**10% OFF FIRST VISIT**

ON PRODUCTION OF THIS ADVERT

[www.harmonybeautysanctuary.net](http://www.harmonybeautysanctuary.net)

6A WALLACE DRIVE · EATON BRAY · LU6 2DF

**01525 229111 / 07852 145053**

IN BETWEEN LEIGHTON BUZZARD & DUNSTABLE



Here to take care of your mucky pup!

- Your local grooming service in Eaton Bray!
- 1-2-1 care for your dog
- NO cages!

Telephone: **07580 343 396**

Email: [waggingwonderful@yahoo.co.uk](mailto:waggingwonderful@yahoo.co.uk)



**FULLY QUALIFIED  
ELECTRICAL ENGINEER**

Competitive prices and quality service

Available for all your domestic and  
commercial electrical requirements

No job too small

Call Russell Sears:

**07578 008567**

**01525 220008**

17 Good Intent, Edlesborough

# Ski Tips



**With ski season coming up we have put together some useful pointers to help you have a safe and happy holiday.**

- **Prepare yourself** at least six weeks before you go, tailor your fitness regime towards skiing. Power, endurance, flexibility and agility are ALL important with skiing.
- **For strength**, try quarter squats or knee bends. (You should be cautious if you have any knee problems!) Core is core - consider Pilates-style exercises to help improve your core stability.
- **For endurance**, try stepping up and down off the bottom stair whilst maintaining a good spinal posture, or simply take the stairs rather than the lift.
- **For agility**, try placing your feet together with your knees slightly bent as if skiing and now jump from side to side, keeping the knees “soft” (slightly bent.)
- **For flexibility**, concentrate on quadriceps (front of thigh) hamstrings (back of thigh) and calf muscles.
- **For your core**, try Ski Fit Pilates – after a thorough assessment of your needs, exercises are tailored to your requirements ([www.stjudesclinic.com/treatments/ski-fit-pilates/](http://www.stjudesclinic.com/treatments/ski-fit-pilates/))

## On the slopes

- **Warm up** before you ski and don't get cold waiting for chair lifts – keep moving.
- **Fuel Stops** - don't skip meals keep your energy up with a good carbohydrate intake. Take muesli bars for snacks in rest periods.
- **Keep Hydrated** – with water.
- **Finally** - don't get in “just one last ski run” - fatigue, combined with cold, can lead to poor judgement and accidents.

If you do get injured, stop skiing, follow the basic first aid guidelines of RICE (Rest, Ice, Compression and Elevation) and seek medical advice from a doctor or Chartered Physiotherapist.

## A final note

If you are worried about your level of fitness, or are unsure about anything in this article, one of our Chartered Physiotherapists will be happy to help.

**St Judes Clinic,**  
**26 Lake Street**  
**Leighton Buzzard**  
**LU7 1RX**  
**☎ 01525 377751**  
**🌐 [www.stjudesclinic.com](http://www.stjudesclinic.com)**



## All Saints' Church, Dagnall

### Services in November 2014

- |                |          |   |
|----------------|----------|---|
| Sun. 2nd Nov.  | 4.00 pm  | United Service for the Festival of all Saints |
| Sun. 9th Nov   | 10.30 am | Morning Service                               |
| Sun. 16th Nov. | 10.30 am | Family Communion                              |
| Sun. 23rd Nov. | 10.30 am | Family Service                                |
| Sun. 30th Nov. | 10.30 am | Informal Worship                              |
| Sun. 7th Dec.  | 9.00 am  | Eucharist                                     |
|                | 10.30 am | Morning Service                               |

Sunday School meets each Sunday at 10.30 am except when there is a Family Service.



# Eaton Bray Methodist Church

On the first Sunday of September, reflecting the return to school, Dr Roger Owers helped us to consider the lessons we all need to learn in life, both of behaviour towards others and God's ways, spelt out in the Sermon on the Mount, so different from the ways of the world.

Our Cafe Fellowship was an extremely challenging one. Led by Karen Drayton we heard stories of forgiveness and reconciliation from places such as South Africa which astounded and humbled us. The discussions we had were thought-provoking and we were able to follow them up at home by looking at websites which explore these issues. Anyone interested will find 'The Forgiveness Project' ([www.theforgivenessproject.com](http://www.theforgivenessproject.com)) a very valuable resource.

We celebrated our Harvest Festival on Sept 28th. The Church was beautifully decorated

with flowers and fruit, a team effort by all the women, headed by Sheila Green and Jane McFarland. It was a delightful service led by Hyacinth Taylor with the help of an enthusiastic Sunday School. It made us think about God's bounty worldwide and, above all, our need to share this fairly with all members of society. Afterwards we were treated to a delicious 'thrif' lunch, prepared by Dave and Stacey Wallis and served by all the men. A collection of donations totalling £300 was sent to the Trussell Trust, who run the Dunstable Food Bank.

**Date for your Diary:** Cafe Community on Saturday 8th November 2014 11.00am – 1.00pm. You will be made very welcome if you come to join us for a cup of tea or coffee and /or a light lunch.

## St Mary's Ladies Guild

The meeting was greeted by Deirdrea who then presented Sue Crick with a birthday card. Devotions were then led by Christine Rogers.

Notices were given:

Next meeting is on 12th November, speaker will be Chris Banks on his travels. The Christmas Fair is on Saturday 15th November 12-3pm where Fay, Joan Fossey, Cathy Gadd and Christine Holloway will man the Guild stall. Proceeds will go to the Church. Members were thanked for their contributions brought in for the Guild stall. The committee would like to know by next month if members will be coming to the December Christmas meeting as numbers are needed for the catering etc.

19th November is the date for the Guild Christmas lunch at Bridgewater Arms at 1pm. Members were requested to return

envelopes with choice of menu and money by next month at the latest as numbers need to be confirmed, cost £19.

Deirdrea introduced the speaker Susan Blain on 'Health and Happiness'

Susan has had three years medical training and had studied homeopathy and said 'state of mind' means 'happiness'. She went on in great detail of the benefits from the five 'Es' – Eat right, Eat raw, Eat less, Exist in the present and E energise.

Deirdrea thanked Susan for a very informative and educational presentation and presented her with a cheque.

Social time followed with a splendid tea for all. The Harvest raffle was drawn; prizes consisting of baskets of fruit and vegetables.

Members then made their way home.

# Let it Grow...

## Elle Laird aka Princess Daisy

The auditions were a hub of nervousness and excitement, the cast was chosen, the scripts were handed out, the rehearsals began and the transformation of Eaton Bray village hall into the set of a milk dairy, a garden and a giants playground has started... It can only mean one thing, Panto is coming!!! Oh yes it is, performing on the 30th and 31st of January and the 1st February, Curtain Call Theatre Group will host its 2015 pantomime Jack and the Beanstalk. The family favorite tale with loveable characters both old and new with guaranteed laughs for any age, written by our very own Gavyn Lugsden along with popular musical numbers, one of which includes our own version of the popular Disney's Let it Go! The show is still in its early stages with lines still being learnt (and me personally

trying to sing in tune!) and we are starting to hand make our set this month. There's a lot to be crammed into our Monday evening meetings but we certainly are having a great time doing it! The new term welcomed some fantastic new members from the village, all of which have joined the cast or stage production along with our experienced cast and members of the youth theatre getting involved, the panto certainly promises to be an exciting production not to be missed... Oh no it's not!!



If you are interested in advertising in our programme or sponsoring the production then please contact Dan Fennell (Chairman and front end of cow!) on 07975 649219. For further information and updates on the show please visit our Facebook page @curtaincallLB



## Edlesborough W.I.

Two theatre visits had been made just before our last meeting and, judging by members' comments, greatly enjoyed. Jenny was thanked for making the arrangements. Our speaker was an old friend of our Institute, Roger Skipper, making yet another popular visit to us. This time he spoke about Flora, Fauna and Gardens of Madeira, which he and his wife Anna, visit every February. With the aid of slides, he showed us the beautiful flowers to be seen all year round on the island. We saw the fantastic sights of many public and private gardens where these

lovely plants bloom.

Madeira is very mountainous, and most of the gardens are set out on very high slopes. The climate – lots of sun and rain – and the volcanic soil all contribute to the growing of such beautiful plants. Garden pests rarely give trouble as they get eaten by the huge number of lizards. The white stone paths in all these gardens really add to the lovely overall effect.

It was lovely to see such wonderful photos, and we all say a big 'thank you' to Roger for showing them to us.

✍️ Val Harris



# Dealing with Parking Tickets

*Jonathan Vernon Smith is the Sony Award winning mid-morning show presenter for BBC Three Counties Radio. During his consumer hour he helps listeners with their consumer problems and now shares his advice with you.*

We've all been there - you return to your car to find a dreadful luminous yellow packet stuck to your windscreen. The dreaded parking ticket! When should you pay up though and when should you fight it all the way?

If you have been silly and parked somewhere you shouldn't, and as long as the company/council has made you aware of their rules on parking with clear signage, you should pay up as quickly as possible. Delaying will only mean that the bill goes up. Pay it, learn from it and move on.

In many cases though, things are not so clear cut. Very often motorists are left confused as to what parking restrictions are. In these cases it is always worth appealing. If you want to appeal, then follow these simple instructions:

1. **DO NOT PAY** if you intend to appeal the fine. Generally paying a parking fine is an admission of liability and you will not be successful with an appeal after this.
2. If you're going to appeal, then do so as soon as possible. Don't leave it to the last minute. Write to the company and ask them to put the penalty on hold until they have investigated your appeal. They don't **HAVE** to do this, but reputable companies and councils will do.
3. When you appeal, make sure you gather as much evidence as possible to support your claim.
4. Take photographs of your car in position, the signs or lack of them nearby.

Anything to demonstrate that it was not made clear enough that you could not park your car in that place.

5. If you're claiming exceptional circumstances (i.e. you were suddenly taken very ill and had to abandon your car in a place you shouldn't have), then obtain supporting letters etc.
6. See if you can get any witnesses to back up your claims and provide you with a witness statement.
7. Stick to the timeline dictated by the company or council. If you are late submitting information etc, then you will lose by default.

When you receive a parking penalty from a council, you need to have your wits about you. These are fully enforceable and need to be taken very seriously.

Private parking company 'fines' are a slightly different matter and should be approached as such. Firstly, they are **NOT** 'fines'. They are merely invoices and unless the company is prepared to take you to the small claims court for payment of the invoice, are non-enforceable. That is not to say you shouldn't consider carefully how to deal with them.

If you have parked on private land and broken the rules of the owner of that land, then pay the fee requested as long as you consider it reasonable. If you don't then pay a reasonable amount based on an equivalent charge for a penalty on a public road. The company would have to sue you for the difference and explain to a judge why the extra money is necessary.

If you want to appeal, then use the company's own appeals process first. If you are unsuccessful then most private companies will be members of either the British Parking Association or the Independent Parking committee. They

have their own separate appeals processes that you can use to escalate your complaint. Finally, the best way to deal with parking tickets is to avoid getting one in the first place. Always look for signs and road markings when you leave your car to see if

it's allowed there or not.

✍ Jonathan Vernon Smith



## Time to Check your Vehicle's Tyres



**Central Bedfordshire Council**  
Working in partnership

With winter and its wetter, colder, frosty temperatures steadily

getting closer, it's even more important to make sure that you check your vehicle's tyre tread depth and pressures.

So this month it is recommended that every driver undertakes the '20p test'.

Take a 20 pence piece, place it in the groove of each tyre, and if you cannot see the outer band of the coin then your tyre has a tread depth above the legal minimum.

If you can see the coin's outer band however, then you need to consider changing the tyre. More than that, if the tread is less than 1.6mm deep across the central three-quarters section of the tyre, then you must get it changed by law.

During October the Bedfordshire and Luton Casualty Reduction Partnership will be offering free vehicle checks at local businesses. This award-winning event, first held at the end of 2013, has so

far seen over 600 vehicles checked.

Cllr Dave Taylor, Executive Member with responsibility for road safety, urged motorists to undertake the same basic checks at home themselves.

He said: "As winter approaches it is extremely important that your tyres are able to remove the water from the road surface so that they have contact with the road and you can brake, steer and accelerate properly."

Cllr Budge Wells, Deputy Executive Member for Community Services for Central Bedfordshire Council, added: "Remember, you only have four small areas about the size of a sheet of A4 paper holding your vehicle to the road. So do please make sure that you check your tyres' tread and pressures at least once a month."

For more information go to [www.drivesafely.org.uk](http://www.drivesafely.org.uk), and look out for the next public vehicle checks in February.



## Eaton Bray Cricket Club Grand Draw

1st prize	£125	Mr Jones	Eaton Bray
2nd	£50	Mrs Dixon	Eaton Bray
3rd	£25	Josh Peacock	EBCC
Bottle whisky		Oliver Wear	
Bottle wine		Josh Peacock	EBCC
Bottle Wine		Tom Holloway	EBCC
Beauty Products		S Feben	Eaton Bray
Good Catch Wine		J Hill	Eaton Bray
Beauty Products		J Walls	
Wine		Ben Noctor	
Wine		Del Darchembaud	EBCC

# Dagnall Weather Station (AONB)

## Weather Conditions for September 2014

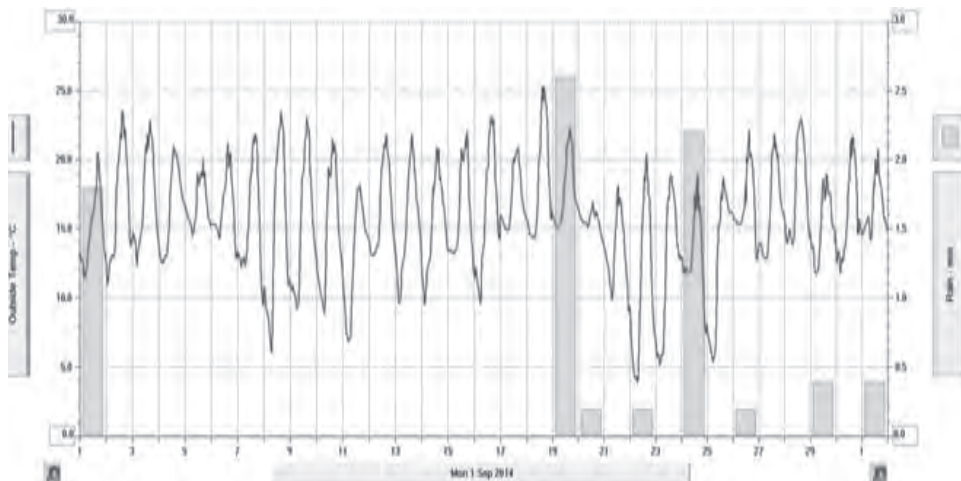
**Elevation: 450 ft - Latitude: 51° 50' 13" North - Longitude: 0° 33' 34" West**

There is only one way to describe September that's "Dry". We only recorded an unbelievable 7.6mm for the whole month that is 3 tenths of an inch. This was only 15% of the six year average rain fall. We were dominated by high pressure for most of September producing not just a dry month but sunny and above average temperature with a mean/average temperature of 15.5°C that is 1.8°C higher

than September last year  
For weather data 24 hours a day, updated every 15 mins, visit: [www.dagnallweather.co.uk](http://www.dagnallweather.co.uk) and [http://bit.ly/weather\\_dagnall](http://bit.ly/weather_dagnall) this site forecast and much more  
If anyone has a question, comment or wishes to contact me please email: [david@dagnallweather.co.uk](mailto:david@dagnallweather.co.uk) or telephone: 01442 843883

	High	Date/Time	Low	Date/Time
<b>Temperature:</b>	25.3°C	18 Sept 14.30	3.9°C	22 Sept 07.00
<b>Mean Temperature</b>	15.5°C			
<b>Dewpoint:</b>	18.9°C	19 Sept 16.00	3.2°C	22 Sept 07.00
<b>Humidity:</b>	97%	11 days in Sept	41%	8 Sept 16.30
<b>Barometer:</b>	1026.6 mb	13,22,27. Sept	1007.8 mb	18 Sept 16.30
<b>Wind Speed</b>	24 mph NNW	24 Sept 14.00	Months avg.	2.7 mph
<b>Wind Chill:</b>	25.3°C ENE	18 Sept 14.30	3.9°C N	22 Sept 07.00
<b>Dominant Wind:</b>	E			
<b>Rainfall</b> *T= total rain days and moisture. R= Actual rain				
<b>*Rain Days: 7 (T), 7(R)</b>		<b>Wettest Day 19 Sept</b>	<b>2.59 mm</b>	<b>0.102 ins</b>
<b>Monthly Rain:</b>	<b>Total</b>	<b>Sept 2014</b>	<b>7.6 mm</b>	<b>0.299 ins</b>
<b>Yearly Rain:</b>	<b>Total</b>	<b>9 Month</b>	<b>654.2 mm</b>	<b>25.755 ins</b>

This shows the very little amount of rain we had 7.6°C with the temperatures day and night being almost constant





# Edlesborough Book Group



## I Know Why the Caged Bird Sings by Maya Angelou



We were prompted by the recent death of Maya Angelou to discuss her work as a Civil Rights Activist and also to find out a little more about her remarkable life. As

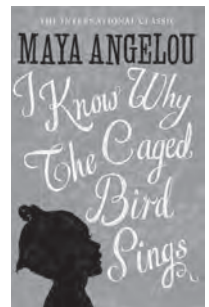
she has written seven autobiographical works, we thought we would start by reading the first and most well known of these. *I Know Why the Caged Bird Sings* covers her first sixteen years and she writes vividly of life during the thirties in Stamps, a small town in Arkansas, where she and her brother, Bailey have been sent to live with their grandmother after their parents' divorce. Christened Marguerite Annie, she is nicknamed Maya by her brother whose stammer makes it difficult for him to say "my sister", always sticking at "my". This becomes Maya. Angelou is an adaptation of her ex-husband's name. Maya is only three when she goes to live with her grandmother and calls her Momma from that time. Momma runs a general store in the black part of town and caters for the local workers and their families. She is obviously a very strong, capable character and her Christian and moral beliefs have a great influence on the small Marguerite. From a very early age she notices the huge differences between the lives of the black and white citizens of Stamps and becomes very aware of the injustices that occur in the everyday life of this small Southern town.

At the age of seven, on a visit to her mother in Chicago, she is groomed by and raped by Mr Freeman, her mother's live in boyfriend. A shocking and confusing experience for a small child, which has

lasting consequences. Mr Freeman, after facing charges, is mysteriously murdered and Maya feels responsible for his death. She becomes virtually mute for years until a sympathetic, rich neighbour in Stamps introduces her to books and literature, gradually bringing her back to normality. When she is thirteen she rejoins her glamorous mother in San Francisco and starts High School. She is really happy there and begins to see what life can offer in a big city. After a while, she wants to be independent and decides to drop out of school. Looking for a way to earn her living, she decides that a trolley bus conductor has some status and although she is refused permission to apply many times, she eventually becomes, at the age of fifteen, the first black female trolley bus conductor in San Francisco. Many episodes in this book, show her determination and strength in the face of opposition and the embryo of this amazing woman is very clear. She ends the book aged sixteen, with the birth of her son. The title of her autobiography comes from her poem "The Caged Bird" which compares the status of the black people to that of the white.

'The caged bird sings with a fearful trill of things unknown but longed for still and his tune is heard on the distant hill for the caged bird sings of freedom'

An inspirational book.



# Salvation Sound



## Genealogy – Lineage

Have you ever researched your family tree?

What or who made you, who you are today?

We are the product of our families. Our colouring, hair, eyes, skin, our size, hands, feet, features all come from our genes or blood-lines.

If like me you were born in November your star sign is Scorpio. Astrologers claim to read your charts, and can predict what's in store for you. Whether your health is as it should be, what your monetary prospects are for the coming weeks, will you be travelling or not, your career success, new adventures, or commitments, changes in lifestyle, ways to achieve your goals – all foretold in your sign of the zodiac! Hmm!

Families have tendencies which seem to influence our lives, particularly those of health: heart disease, cancer, arthritis, sometimes the sort of work we undertake and religion. In this day and age form filling is something that we often have to do and always the question is asked, about our nationality and of what faith we are. What do you answer? Methodist, C of E, Jewish, Salvationist etc. or do you write in this space – CHRISTIAN? Does it really matter? There is but one God – Oh yes, He is called by many different names – but then so am I – Mum, Nan, Aunt, Mo, Maureen, sometimes Ms, sometimes Mrs but really I'm still just me! Then comes the question, so who am I? Well I'm a follower of Jesus. I know that God's world has a purpose of love, forgiveness, and justice for everyone, and that He has fit me for His plan and purpose. Life is a bit of a risk, that's what makes it exciting – God didn't make us like robots, we have choices to make. Believing in God has to be worked at, as long as we have brains that are subject to conflicting emotions we will struggle, we will have ups and downs that affect us spiritually. 1 Corinthians 10 says "God keeps his promises, and he will not allow you to be tested beyond your power to remain firm." So to truly know him, we start by believing, trusting and relying on Him and His Son, Jesus. Try reading your Bible, that's why it's on the bookshelf; try praying, not always easy. Very soon now you will be writing your Christmas

cards and buying gifts for your family and Just remember why you do these things. Think of that young Jewish girl, from an ordinary family, living in an ordinary town, yet she was chosen by God, and what followed a nine month emotional roller coaster? Why the wonder of birth –

"When Mary birthed Jesus, 'twas in a cows' stall with wise men, farmers and shepherds and all, But high in God's heaven, a star's light did fall and the promise of ages it then did recall."

Christmas is not merely the story of a baby's birth – the heart of Christmas lies in the fact that "God so loved the world that he gave his one and only Son, that whoever believes in him shall not perish but have eternal life." John 3 v 16. I can't claim I have traced my family back that far BUT I do know that "I'm the child of a king, with Jesus my Saviour, I'm the child of a king."

✍Maureen



## The Salvation Army, Booth Place, Eaton Bray Weekly Activities



### Sunday

Footprints (Sunday School) 9.45-10.45am  
Morning Worship 11am  
Songs of Praise 4pm  
(3rd Sunday of the month from May to Dec)

### Tuesday

Coffee Morning  
(alternate weeks) 10-11.30am  
Music practices (all welcome) 7.30-9pm

### Wednesday

Home League 2.30-3.30pm  
(Ladies Mtg but all welcome)  
Champions Challenge Club (term time)  
(Ages 5-10 years) 5.45-6.45pm

### Thursday

Parent and Toddler Group  
(Term time) 9.30-11.30am  
Haberdashers' night  
2nd Thursday of month 7.45 pm  
Ladies Fellowship  
(Last week of month) 7.45pm

For further details please call Envoy Hilary  
01525 222087 / 07932 057490

E: [hilary.chadwick@salvationarmy.org.uk](mailto:hilary.chadwick@salvationarmy.org.uk)  
W: [www.salvationarmy.org.uk/eatonbray](http://www.salvationarmy.org.uk/eatonbray)

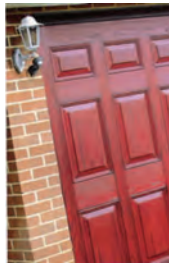


# Premier Garage Doors & Gates



## Quality Garage Doors

- ✓ Superb choice of designs in metal, wood and fibreglass
- ✓ Any size door made to your requirements
- ✓ Large selection of spares & fast repair service available
- ✓ New or existing doors converted to automatic
- ✓ Professionally fitted by own expert craftsmen
- ✓ Prompt free estimates & advice
- ✓ We cover all areas



**(EST 1984)**

DIY kits available  
Insurance work welcome  
Council approved  
Remote control gates also available



Unit 7, Sparrow Hall Farm, Leighton Road, Edlesborough LU6 2ES

**01525 220212**

**[www.premiergaragedoors.co.uk](http://www.premiergaragedoors.co.uk)**

# Janes

Impress the In-Laws this

# Christmas



*Cherry*  
LAMINATE



*Striped*  
CARPETS



*Vinyl*  
FLOOR

## Karndean-Carpets- Vinyl- Laminate & Engineered Wood



- \* No Obligation Quote
- \* **Takeaway Samples**
- \* Wide Choice of Products
- \* **Help with Furniture Moving**
- \* Uplift & Disposal Service

## Don't miss out on your fitting slot

4-8 High Street, Edlesborough, Dunstable, Beds LU6 2HS  
Tel: 01525 220208 [www.janesltd.co.uk](http://www.janesltd.co.uk)