

# FOCUS

August/September 2007



THE FOUR VILLAGES MAGAZINE

**EATON BRAY**  
**EDLESBOROUGH**

**NORTHALL**  
**DAGNALL**



# The White Horse at Eaton Bray

Tel: 01525 220231

[www.the-whitehorse.co.uk](http://www.the-whitehorse.co.uk)

**15th to 18th August**

**19th to 22nd September**



## *A Champagne and Caviar Celebration!*

What more refreshing way to enjoy  
summer than with a glass of  
“Bubbly”

Your choice available by  
the bottle or glass.

Why not also have a tasty  
accompaniment of Caviar, Pâté  
or Smoked Seafood?



## *A Taste of Asia*

As the days get shorter, we  
will be providing you with  
the tastes of summer days.

Come in and excite your  
taste buds with spice and  
savour the flavours of  
the Orient.

# Edlesborough Autos

Walton End Garage, Peblemoor, Edlesborough, Nr Dunstable, Bedfordshire LU6 2HZ

Telephone: 01525 222224 Facsimile: 01525 223113



**MOT while-u-wait**  
**All Vehicle Servicing and Maintenance**  
**Accident Damage and Insurance Repairs**  
*(Free Estimates)*

**Breakdown Recovery Service**  
**Attended Service for Petrol and Diesel**  
**Flo Gas Agent for all sizes of Bottled Gas**  
**Smokeless and Household Coal**  
*The garage shop stocks all workshop consumables  
and general goods for your daily requirements*

**Opening Hours**  
**Monday-Friday 7:30am - 7:00pm**  
**Saturday 8:30am - 5:00pm**



# **Carpet & Upholstery Cleaning**

**Professional & Local**

**All work guaranteed - not happy, don't pay**

**Powerful equipment means drier much  
quicker than other methods**

**100% Guaranteed no chemicals left in carpet  
when dry therefore will not easily resoil  
& perfectly safe for children & pets**

**Recommendations account for 90% of my work**

**Absolutely no hard sell**

**Telephone Colin for a Free Quote**

**DEEP-CLEAN**

**01525 851 811**

**[www.deep-cleaners.co.uk](http://www.deep-cleaners.co.uk)**

**Email: [cbthomas@ntlworld.com](mailto:cbthomas@ntlworld.com)**

**EDLESBOROUGH SURGERY 01525 221630**

**Cow Lane Edlesborough**

**Dr M R Jones, Dr J R Bell,  
Dr Stephanie Johnston, Dr Helena Verwey**

**We offer a full range of health services at the surgery**

**EDLESBOROUGH PHARMACY 01525 223181**

**Pharmacist - Claire Davies**

**Friendly, reliable professional service at the pharmacy  
All doctors, dentists and hospital prescriptions dispensed  
Professional advice always available**

**Over the Counter Medicine**

**Special Orders on Request**

**A range of cosmetics/baby products/seasonal goods**

# **Focus - The Four Village Magazine**

## **Magazine Committee**

**Joint Editors:** George Crutcher - 7 Summerleys, Eaton Bray 221637  
Sally Siddons - 34 Wallace Drive, Eaton Bray 221733

**Email:** [sallysid@hotmail.com](mailto:sallysid@hotmail.com)

**Dagnall Representative:** Sue Cawdell - 10 Deans Meadow, Dagnall 01442 842200

**Northall Representative:** Derrick Bonfield - 'Poppy', Eaton Bray Road 220013

**Circulation Manager:** John Plater - 41 Church Lane, Eaton Bray 221095

**Treasurer:** Ken Coates - 10 The Orchards, Eaton Bray 221117

**Advertising:** Sally Siddons - 34 Wallace Drive, Eaton Bray 221733

**Production Manager:** Tracey Moren (Moren Associates Limited) 01525 229695

Copy for publication to the Editors or one of the following by the **10th of the month:**

Kevin Cabbage - 'Larums', Eaton Bray Road, Northall

Val Barrow - 3 Chestnut Close, Dagnall

*Focus accepts no responsibility as to the accuracy or content of any advertising or articles published in 'this' magazine neither do they reflect the opinion of members of the Committee.*

*© Articles published in Focus may not be reproduced without permission.*

**Focus would like to remind contributors that the deadline for articles is the 10th of the preceding month**

## **Eaton Bray Youth Club**

An opportunity will occur in September 2007 for a Youth Club Leader in Eaton Bray as the present Leader will be leaving. This established and successful club provides a vital and rewarding position giving an essential facility for young folk in the village.

The needs are:-

To organise and oversee Youth Club Activities at the Coffee Tavern as well as on special arranged outings.

To liaise with the Bedfordshire Rural Communities Charity Team and Luton & Beds Youth Association on organised events.

Supported by:-

Two experienced helpers and a treasurer and the Parish Council.

Help for special projects from the Bedfordshire Rural Communities Charity Team & L & B Y A.

The rewards are:-

A monthly salary during school term time.

All school holidays off.

For further information contact:

M Beal (01525) 221185

or apply to The Parish Clerk:

Mr E Bird, 8 Gardners Close, Dunstable, Beds, LU6 2AJ Tel: (01582) 699722

### **Mike Venn**

Judy and family would like to thank everyone for their kind messages of sympathy following Mike's death on Sunday 15th July.

Also thank you to everyone for their continued support over the last five years.

## Village Diaries August/September 2007



### Weekly

- Mon-Fri (term time) Eaton Bray Pre-school, Eaton Bray Village Hall, Cindy 07773 095624
- Mon-Fri (term time) Dagnall Under 5's, Dagnall Village Hall, 9.30-12 noon, Mrs Ann Tobin 07816 358342
- Mon-Fri (term time) Edlesborough Under 5's Pre-School, Edlesborough Memorial Hall, Sue Connor 01525 222739
- Tuesdays Yoga Classes, Northall Village Hall, 1.45-3.15pm 01525 377542
- Tuesdays Line Dancing, 1.30-3p.m., Eaton Bray Village Hall, Lyn Stubbs 220731
- Tuesdays Baby Cafe (Support for Breastfeeding mums), 10.15 - 11.45 am, Pitstone Memorial Hall
- Tuesdays FITKID, 6-7pm, Eaton Bray Village Hall, Caroline 08445 606432
- Tuesdays Totterhoe Baby & Toddler Group, 9.30-11.30am, Totterhoe Village Hall, 07986 730922
- Tuesdays Fortnightly Coffee Morning, Bring & Buy, Table Top Sale, 10-12noon, Salvation Army Hall, Booth Place, Eaton Bray
- Weds (term time) Eaton Bray Under 5's, 1.15-3pm Eaton Bray Village, Hall Cindy 01582 477568
- Wednesdays Chi Kung & Wu Chi classes, Coffee Tavern 11am - noon
- Thurs (term time) Baby & Toddlers Group, Dagnall Village Hall, 12:45 - 2:45pm (12:15 if bringing lunch) Contact Michelle Tel 01442 842 676
- Thursdays Yoga Classes, Northall Village Hall, 11.30am-1pm
- Thursdays Keep fit, 2pm, Eaton Bray Village Hall, Mrs Johnson 220304
- Thursdays Kfa Body Moves 40+, Fitness through movement, exercise & dance. 8-9pm, Edlesborough School, Contact Pat 01582 668735
- Fridays SOCATOTS, 12:45, Eaton Bray Village Hall, Daniel Walker 07968 778681
- Fridays (term time) The Venue for 8-12s @ Grace Community Church, 7.00-8.45 pm, Bruce Moulding 01525 221601
- Saturdays Jazzercise, Eaton Bray Village Hall, Angela Veryard, 715208

### Monthly

- 1st Monday Eaton Bray Parish Council Meeting, 7.30pm, The Coffee Tavern
- 1st Monday Eaton Bray W.I. Meeting, 7.30pm, Eaton Bray Village Hall, Contact Sheila Beal on 01525 221185
- 1st & 3rd Tuesday Dunstable & District Orbit Club meet in central Dunstable at 8pm. For details contact 01525 222441 or 01582 755147
- 1st Sunday Grace Community Church meeting, 3.30 pm, all welcome, Bruce Moulding 01525 221601

- 2nd Tuesday Toddlers' Church, St Mary's, Eaton Bray, 2.00pm
- 2nd Tuesday Dunstable & District Local History Society meeting, 7.45pm,  
Methodist Church Hall, Dunstable
- 2nd Tuesday Edlesborough W.I. Meeting, 7.30 pm, Edlesborough Memorial Hall
- 2nd Wednesday 8.15pm Healing Service in St Mary's Church
- 2nd Thursday CAMEO Coffee, tea & chat, 10am-12noon, Edlesborough  
Methodist Church
- 3rd Thursday Edlesborough Parish Council Meeting, 7.30pm, Memorial Hall
- 3rd Sunday Lunch club 11.30 to 2.00pm, Eaton Bray Village Hall, Chris  
Hewitt 222288

**Other Regular Events**

- 10th Aug Leukaemia Research Coffee Morning, 2 Dunstable Road, 10.30 am
- 8th & 22nd Aug, Bingo, Dagnall Village Hall, 8pm
- 5th & 19th Sep
- 29th Aug Dagnall Over 60s visit to Ferryman Inn. Coach leaves Village Hall  
at 9.30am
- 18th Sep Dagnall Over 60s visit to The Bell at Winslow. Coach leaves  
Village Hall at 11.30am

**One Off/Annual/Irregular Events**

- 16th Aug Edlesborough W.I. Coffee Morning, 10.30am - 12 noon at  
Brooklyn Farm, Cow Lane, Edlesborough
- 18th Aug Mammoth Bric-a-Brac Sale and Coffee Morning, the Salvation  
Army Hall, Booth Place, Eaton Bray. 10am -12 noon
- 1st Sep Coffee Morning, 10.30am, St Mary's Eaton Bray
- 15th Sep Organ recital by Jean Martyn in Dagnall Village Hall, 7.30pm.  
Tickets £6 from Roy Castledine
- 28th Sep Age Concern Harvest Festival Auction, The Swan, Northall, 7.30pm
- 29th Sep Harvest Supper & Barn Dance, 7pm Eaton Bray Village Hall,  
tickets 01525 222283
- 30th Sep Harvest Festival Services, Salvation Army Hall, Booth Place,  
Eaton Bray 11am and 6pm.

***EDLESBOROUGH PARISH COUNCIL***

**BOOKING SECRETARY/ CARETAKER**

**Required for Edlesborough Memorial Hall, Pavilion and The Green**

**With full support of Parish Councillors**

**Commencing 17<sup>th</sup> August 2007 £8.00 per hour**

**Hours flexible to be discussed at Interview**

**Please apply in writing to the Clerk: Lin Sargeant, Pantiles,  
Eaton Bray Road Northall, Dunstable, Beds. LU6 2EU,  
e-mail: parish.council.clerk@edlesborough.gov.uk**



## **Edlesborough Under 5's**

**Monday - Friday**      **9.15 am - 12.00 noon**  
**Tuesday & Thursday**      **12.45 pm - 3.15 pm**

*"Edlesborough Under 5's provides good quality nursery education"*

*"Children come into the group happily, eager to take part in the activities"*

*"Children's creative skills are promoted very well through a stimulating range of opportunities"*

These are just a few of the comments made in our fourth OFSTED Report (Sept 2004). The report reflects the high quality of learning on offer to all children at Edlesborough Under 5's and highlighted the quality of teaching by the staff. We are currently operating a waiting list for 2½ to 4½ year olds. If you would like to pop in for a look around, please phone Tracey on 07854 939226 between 9am - 12 noon, to arrange an appointment. A warm welcome awaits you.

**For registration details, or to place your child on the waiting list, please phone Sue Connor: Tel - 222739.**

*"We are an Equal Opportunities Employer"*

[www.edlesboroughunder5s.org.uk](http://www.edlesboroughunder5s.org.uk)

# **PINSTripES**

## **SPECIALISTS IN SIGNS & GRAPHICS**

**CAR BIKE & VAN GRAPHICS**

**SIGN BOARDS**

**LORRIES HORSEBOXES**

**SHOP SIGNS**

**WHEEL COVERS**

**AND**

**VEHICLE MAGNETICS**

**WINDOW DISPLAYS**

**VINYL TEXT & LOGOS**

**PRINTED STICKERS & PHOTOS**

**A BOARDS**

**LABLES**

**BUILDERS BOARDS**

**BANNERS-BUNTING-FLAGS**

**01525 220485**

**07973 167779**





Quality Flooring  
and Installation  
at Affordable Prices

- ◆ **Laminate**
- ◆ **Real Wood**
- ◆ **Carpets**
- ◆ **Karndean Vinyl**

For a **FREE**, no obligation quote, please contact me, Michael Bishop, on either number and I will be happy to visit you in your home.



Master Fitter

"Excellent service and a beautiful floor expertly installed. I would highly recommend Aspley Flooring" *S.Stillard, Edlesborough.*

"Your workmanship has created a beautiful floor, I shall have no hesitation in recommending you or using your services again" *A Satisfied Customer, Edlesborough.*

t: **01908 587332** m: **07977 575010**

30 Years Experience  
Domestic & Commercial Security



- Burglar Alarms
- Redcare Monitored Systems
- Intercoms
- CCTV
- Access Systems
- Locks



CERTIFICATE NO. NAC/G/2113

Quality Installations – Competitive Prices  
Insurance Approved Free Surveys

**AAA SECURITY**

**01525 378222**

Slicketts Lane, Edlesborough, LU6 2JD





**EDLESBOROUGH  
TENNIS CLUB**

Website by [Jupiterwill](#)

**[www.etctennis.org](http://www.etctennis.org)**

**Play tennis   Have fun   Socialise   Feel good   Join our club**

**Join via the website, or call Iona McLean-Hall on 01525 220562 for details**

## **Edlesborough Tennis Club**

**You don't have to be a Tennis Club member to access the Edlesborough Tennis Club website (except the members area where you need a password).**

**Is tennis good for you? Of course it is, tennis provides a total body workout by:**

- Strengthening your arms, back, abs, bottom and legs**
- Rallying, which is a good cardiovascular workout**
- Improving co-ordination/balance/speed/competitiveness**
- Working your glutes and inner and outer thighs as you become a better player**

Tennis keeps your mind on the ball – it's a mentally challenging game where speed and reaction are paramount. Tennis gives you great bones. According to the National Osteoporosis Society, tennis is an excellent exercise for your skeleton because it's a weight-bearing exercise exerting a force that stretches and contracts the muscles, stimulating the bones they are attached to, to strengthen them. Weight-bearing exercise is one of the most important ways that people can prevent osteoporosis.

Tennis can make you happy. Reach for the racket - exercise of all kinds can improve people's moods. Ninety per cent of research has found that exercise has antidepressant effects. Tennis is fantastic for kids' development - improving co-ordination, balance, fitness, self-confidence, concentration, respect, communication skills, independence, intellectual stimulation and determination. Doesn't always work on adults unfortunately.

Carnival "Play Tennis Day" was again a great success with lots of people young and old having a go with the Ball Machine, Mini Tennis and a spot of coaching. A special thank you to all our helpers and assistant coaches; Jack Coates, Ben Brown, Sam Scott, Mike Johnson, Suzanne Brewer, Carolyn and James Kight.

Congratulations to the Edlesborough Knock Out team who narrowly beat Eaton Bray to reach the semi – finals. Make a note in your diary for Finals Day Saturday 15<sup>th</sup> September with lunchtime ploughmans for players and spectators. LTA Wimbledon officials will umpire all the matches followed by an evening barbecue and prize giving.

DAVIS CUP tickets. This is about as rowdy as English Tennis gets, we're playing CROATIA on grass at Wimbledon Court 1. Details can be found on [www.etctennis.org](http://www.etctennis.org)

**TOURNAMENTS** are not just something that good players do, they are an opportunity

for all players and standards to enjoy an exciting, sociable and fun tennis experience. So come on ETC Juniors get onto the website [www.etc tennis.org](http://www.etc tennis.org) click on Tournaments and have a go. Alex Ellis and Alex Nilsen are 2 of our representatives in the 2007 South Beds Championships entering both the singles and doubles.

Ziggy Bis



### **More holiday!**

The statutory minimum holiday entitlement of four weeks' paid holiday is to be increased by eight days. The additional days will be added in two parts: four days on 1 October 2007, giving a total entitlement of 24 days a year, and a further four days on 1 April 2009, giving a total entitlement of 28 days. All increases are pro-rata for part-time staff, whether or not they usually work on bank holidays. The additional entitlement can include bank and public holidays, so workers receiving 20 days' leave plus eight bank and public holidays will not get more. The Department of Trade and Industry (DTI) will be setting up an online calculator to help people work out their holiday entitlement. Further details are available on the DTI website at [www.dti.gov.uk](http://www.dti.gov.uk). Holiday entitlement changes are still under discussion in N. Ireland. An announcement is likely later this summer.

*For more information contact the Citizens Advice Bureau, Grove House, High Street North, Dunstable. Tel: 01582 661384. Do you know anyone who would be good at advising and helping people? If so Dunstable Bureau is the place to be. Please contact the above number for more information on volunteering.*

# **GROVE FARM**

# **PYO**

Great Gap, Ivinghoe, Nr Leighton Buzzard, LU7 9DZ

Open from mid June to October

30 different varieties of fruit and  
vegetable to pick your own

Visit [www.grovefarmpyo.co.uk](http://www.grovefarmpyo.co.uk)

or ring 01296 668175 for more information



## **YOUR ONE STOP SHOP FOR:**

Hot Tubs/ Spas • Swimming Pools  
Pool & Spa Chemicals • Splash Pools

# **AZURE POOLS & HOT TUBS LTD**

Leighton Buzzard Garden Centre, Hockliffe Road, Leighton Buzzard.  
Tel: 01525 854000 • [www.hottubs4u.co.uk](http://www.hottubs4u.co.uk) • [www.azure-pools.co.uk](http://www.azure-pools.co.uk)

# P. DYER ELECTRICAL

*For all your Testing & Inspection needs*

- *Re-wires*
- *Testing & Inspection*
- *Security Systems*
- *Security Lighting*
- *Decorative Lighting*
- *PAT Testing*
- *Fuse Boards*
- *Landlord Certificates*

All work guaranteed. Fast, friendly, reliable, local electricians.  
For a free, no-obligation estimate, call Paul on:



**Tel: 01525 222109**  
**Mobile: 07850 682815**



# EDP

EDLESBOROUGH DENTAL PRACTICE

- ✓ Preventative Dentistry
- ✓ Dental Hygienist
- ✓ Cosmetic Dentistry
- ✓ Treatment For Snoring
- ✓ Implants

*The very best in quality dental care*

EDLESBOROUGH DENTAL PRACTICE  
11 Cow Lane | Edlesborough | Dunstable | Bedfordshire LU6 2HT

**01525 223175**

[www.edlesboroughdentist.co.uk](http://www.edlesboroughdentist.co.uk)

## **Mothers' Union, Eaton Bray With Edlesborough**

It was flowers all the way at the June Meeting when Carole Johnson who is a NAFAS (National Association of Flower Arranging Societies) Area Demonstrator – and currently Area Secretary as well - gave a demonstration of her considerable ability.

Her training was originally a City and Guilds course, followed by NAFAS training and examination. NAFAS 'rules' for demonstrators are fairly strict on speech and presentation, and include such things as only replacing scissors on to a piece of cloth (to avoid any clatter), not bending down, always ensuring clippings fall into the flower box and ensuring the box is painted black – although this is to avoid any advertising.

Successful flower arranging depends on flow, space, rhythm, movement etc. and Carole prefers 'modern' shapes for which she uses unusual containers, steel grass, sisal and even pieces of wool to decorate a container and 'carry the colour through'. It appears that Belgium and Dutch flower arrangers are into 'wacky' things!

She explained how to condition roses, which need 'misting' but lilies should not be sprayed! The audience watched spellbound as she produced five amazing arrangements, all different shapes, all different flowers and all different colours. Roses, lilies, orchids, carnations – all delightful and very much enjoyed.

---

### **Shape Your Future**

Did you know that by 2021, there will be 26,300 new homes in Luton and South Bedfordshire? The Government wants to increase housing supply in the South East and has identified South Bedfordshire and Luton as part of the 'Milton Keynes and South Midlands Growth Area'. South Beds District Council, along with Luton Borough Council and Bedfordshire County Council has been charged with delivering this growth, but we also need to deliver the jobs, schools, shops, community facilities and other important infrastructure that must go alongside it. Growth is coming, but in order to ensure that it brings benefits to the area and those who live here, we need to involve as many people as possible in making important decisions.

From 30 June until the end of September, the first stage of our on-going growth consultation is taking place. During this time we will be seeking public opinion on different options for where the growth could go (including an option which includes village expansion). We also want to know what you think about some other issues that need to be addressed alongside the growth, such as how we will travel, where we will work and how we will ensure that our new communities are sustainable and inclusive. There are many opportunities to find out what is happening and have your say, including exhibitions in public locations, a summary leaflet (which was delivered to every house) and questionnaire and a website containing more detailed information; including the Core Strategy Issues and Options Paper which discusses the issues mentioned above in more detail).

**The exhibition will be at Eaton Bray Village Hall on Tuesday 4<sup>th</sup> September from 5pm until 8pm.** Please note that the exhibition will also be held in some other villages on different dates, so if you cannot make this date, there will be other opportunities to visit the exhibition. Please go to [www.shapeyourfuture.org.uk](http://www.shapeyourfuture.org.uk) for a list of village exhibitions or call 01582 474068.

We hope you can find the time to come along and tell us what you think and please do

not hesitate to contact the Development Plans team South Beds District Council if you require any further information. Tel: 01582 474068

Websites: [www.shapeyourfuture.org.uk](http://www.shapeyourfuture.org.uk) Email [consultation@shapeyourfuture.org.uk](mailto:consultation@shapeyourfuture.org.uk)

Address: Development Plans, South Beds District Council, The District Offices, High St North, Dunstable, LU6 1LF.

---

### **Edlesbray Leisure Fellowship**

Do you know who we are and what we do at Elf Club? We are all retired but like to be active. We meet four times a year at The Coffee Tavern when we plan the things we would like to do. We go out to lunch four times a year. We pay £3.00 subscription a year. The remaining activities for this year include:-

A ride on the Nene Valley Railway and a visit to Elton Hall

Away weekend in Lincoln

Lunch at Poplars Nursery

Talk about Crystal Palace with lunch

Visit to Houses of Parliament and to the War Cabinet Rooms or Westminster Abbey

Walk around College Lake followed by lunch

Christmas Lunch at Pulloxhill

Our aim is to get people of a like mind to meet and do their own thing i.e. if the men wish to look at aeroplanes or architecture, they arrange their own trip. Likewise for the ladies or other mixed groups. We don't all have the same interests but it is nice to meet others who enjoy the same things.

If you feel you would like to join us please do come along to our next meeting at the Coffee Tavern on Thursday September 13<sup>th</sup> at 10.30am. You will be very welcome.

Val 220972

---

### **Open Studios Arts Festival 2007**

The 17<sup>th</sup> annual Hertfordshire Open Studios Arts Festival is with us again from the 8<sup>th</sup> - 30<sup>th</sup> September 2007. Open Studios is Hertfordshire's largest and most exciting annual art event. This year, over 200 artists invite you to meet them in their homes, with displays of paintings, sculpture, textiles, photography, jewellery, ceramics, stained glass and mixed media.

A sixty six page FREE colour brochure listing all of the artists, with venue details, directions, opening times and dates, and a small example of his/her work is available now from John Clark on 01582 873409 /873118 - just leave your name, address and postcode for your personal copy and invitation.

In this area, we have artists in Studham, Dagnall, Tring Potton End, and many in Berkhamsted and Hemel Hempstead. Posters and other publicity will appear in libraries, tourists information centres and shops in your area from mid August.

The HVAF (Hertfordshire Visual Arts Forum) website [www.hvaf.org.uk](http://www.hvaf.org.uk) also provides information for this festival, which covers the whole of Hertfordshire.

You will be able to meet the artists, view their work, and have the opportunity to purchase something special and original

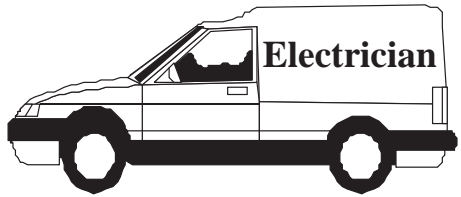
**YOU WILL BE AMAZED AT THE HIGH STANDARD OF WORK THAT WILL BE ON SHOW DURING THIS FESTIVAL.**



**M.J. BROUGHTON**  
**QUALITY DECORATING**  
*Interior and Exterior*  
 ALL WORK CARRIED OUT TO THE HIGHEST STANDARD  
 For a free estimate with no obligation ring  
**01525 - 222764**  
 8 SUMMERLEYS, EDLESBOROUGH.

**P.J. BRINKLOW**

**Electrical Contractor**



**Most types of electrical  
 work undertaken**

**Tel; 01525 220469**

**Mob; 07860 781330**

**43, Pebblemoor,  
 Edlesborough**

**Janes**

*Carpets and Flooring*



We carry a wide range of  
 Weaves, Twists & Natural Carpets Vinyl & Quick Step Laminate  
 KARNDEAN The warm alternative to WOOD & CERAMIC TILES

**AFFORDABLE & COMPETITIVE PRICES**

**NO DEPOSIT**

**INVOICE ON COMPLETION**

**SAMPLE TAKE AWAY SERVICE**

We are happy to visit you at your home For a FREE no obligation quote.

**High Street Edlesborough Nr Dunstable Beds. LU6 2HS Tel: 01525 220208 [www.janesitd.co.uk](http://www.janesitd.co.uk)**



# CHARTERED ACCOUNTANT



**01525 221676**

**OPEN 7 DAYS / EVENINGS  
FRIENDLY LOCAL SERVICE  
COMPETITIVE FEES**

**MIKE A. SUTCLIFFE**

**213 CASTLE HILL ROAD  
TOTTERNHOE, BEDS, LU6 2DA**

## Lynwood Antique Restorations

With over 20 years experience in antique restoration.

Specialising in traditional Antique Restoration, French Polishing, Turning, Leathering and Upholstery

All Cabinet making undertaken

Trade or Private Welcome

**Simon Lewis**

**T: 01525 222950**

E: [simon@lyncot.co.uk](mailto:simon@lyncot.co.uk)

Lynwood Cottage, Leighton Road, Northall



## *Patricia's Cuisine*

Catering For All Occasions

- Buffets, Dinners •
- Christenings, Weddings, Funerals •
- Promotions & Business Lunches •

*For Enquiries & Menu*

Meadside Farm, 104 High Street,  
Eaton Bray, Bedfordshire, LU6 2DP

**Telephone: 01525 222174**

## BARRY CATO

### MOTOR REPAIRS

*Servicing, repairs and  
MOT's arranged*

**Workshop at:**

r/o Norfolk House Farm, Harling Road  
Eaton Bray, Dunstable, Beds, LU6 1QY

Tel: 01525 221681 (workshop)

07836 650015 (mobile)

# SPOTLESS

## Domestic Cleaning Service

- \* Weekly \*
- \* Fortnightly \*
- \* One-offs \*

- Fully Insured
- Family Run Business
- Free In Home Quote
- References Available
- Window Cleaning
- Carpet Cleaning

**Gary & Lorraine Ross**

**Tel: 01296 580203  
or 07796 406717**

# Moore's

**DUNSTABLE'S DEPARTMENT STORE  
21-23 HIGH STREET SOUTH,  
DUNSTABLE, BEDFORDSHIRE  
TEL: 01582 662638  
EMAIL: mooresd@globalnet.co.uk  
www.mooresofdunstable.co.uk**



**Blockpaving, Patio Specialists and  
Groundwork undertaken  
Telephone 01582 704495  
Mobile 07958 717248  
Free Quotations**

# SOVEREIGN WILL & PROBATE

- ✓ Inheritance Tax avoidance
- ✓ The best provision for children

Wills can **double** a couple's inheritance tax free entitlement and **avoid over £120,000 tax**  
(Includes anyone **widowed** in the past 2 years)

**40%**  
inheritance tax  
starts at  
**£300,000**

# 01525 220644

DAYTIME & EVENING  
APPOINTMENTS

*A Solicitor's Service in the Privacy of Your Home*



**Your Village**

**Estate Agents**

The Complete Professional Property Service

Independently owned and established for over 30 years, fully staffed by experienced mature and professional people giving an expert and friendly service.

All village properties are on display and offered from our Dunstable and Eaton Bray/Edlesborough offices with advertising in Beds/Bucks/Herts and North London and via our excellent Website & Rightmove.

**Move with the name you can trust.**

65 Moor End, Eaton Bray

Tel: 01525 221313

**[www.densons.co.uk](http://www.densons.co.uk)**



# GATES

Plumbing & Heating Ltd

Specialising in all types of  
Plumbing, Gas & Oil Heating

We now offer **Solar Heating** as part of our portfolio, please contact us for a free estimate

**Tel: 01296 670445**

Email: [plumbing@gates100a.fsnet.co.uk](mailto:plumbing@gates100a.fsnet.co.uk)

CORGI & OFTEC registered



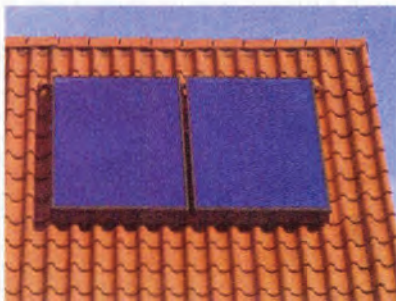
## UNICORN WINDOWS LTD

*Quality and Service from  
Your Local Company*

- Quality Windows, Doors, and Conservatories
- Internally glazed for high security
- High security locks on all windows, doors and conservatories
- Full 10 year insurance backed guarantee
- Specialist box sash replacement



## SOLAR PANELS by UNICORN WINDOWS LTD



- Clean environmentally friendly - For all types of roof
- Extremely cost effective
- State of the art technology
- High quality materials guarantee durability and reliability
- Latest control technology

Call free on: **0800 092 5212**

Head Office and Factory: Unit 3 & 4 Youngs Ind. Est.  
Stanbridge Road, Leighton Buzzard, Beds, LU7 4QB  
Tel 01525 854272 [sales@unicornwindows.co.uk](mailto:sales@unicornwindows.co.uk)



# E&C GARDEN DESIGN

Garden Design, Amenity  
& Horticultural Consultant

Chartered Surveyors



01525 220780

## HALL FOR HIRE

- Bar & Kitchen
- Discount for Villagers
- Membership Available
- Club Bar Prices
- Family Events Every Month

**EATON BRAY  
SPORTS & SOCIAL CLUB**

For Details phone 07709 725803



cardio



strength



stretch



**DUNSTABLE CLASSES:**

MON 7.45PM Northfields Sch

WED 7.45PM Queensbury Sch

**TOTTERNHOE & EATONBRAY**

THUR 9.30am St Giles Ch Hall

SAT 9.30am E B Village Hall

Info on above Tel: 01525 715208

Or for kids classes 07790236087

**TRING CLASSES:**

TUES 7.30 p.m. Goldfield Infants Sch

WED 9.30 a.m. Red Cross Hall

THURS 7.30 p.m. Grove Road Primary

Info on above Tel: 01525 371553 or go to

[www.jazzercise.co.uk](http://www.jazzercise.co.uk)

# jazzercise®

FREE CLASS WITH THIS AD!



Realise  
your **child's**  
potential

### Maths and English After-School Programmes

Kumon programmes:

- work at a pace tailored to your child's needs
- give their confidence a real boost
- develop invaluable study habits and concentration
- complement the school curriculum

Contact your local Instructor today.

Christina Wade  
DUNSTABLE  
STUDY CENTRE  
**01525  
222505**

**KUMON**  
Every child can shine

[kumon.co.uk](http://kumon.co.uk)

## All Plumbing Repairs and Installations

**Domestic & Commercial**

- Dripping taps
- Sinks
- Overflows
- Cylinders & Tanks
- Immersion heaters
- Showers & Bathrooms etc
- Leaks, Bursts & Blockages
- Insurance work undertaken



City and Guilds  
Qualified Engineer



No call-out charge, free estimates

**D. NICHOLSON PLUMBER**

# 01525 872335

Mobile: 07976 975604

Glebe Farm Cottage, Dunstable Rd, Toddington

## **Eaton Bray with Edlesborough Parish News**

**Vicar: Canon Malcolm Grant**

**The Vicarage, 11 High Street, Eaton Bray - Tel: 01525 220261**

**Hon. Assistant Priest: The Revd John Heffer**

**35 Pebblemoor, Edlesborough - Tel: 01525 220618**

As I write, we are making last minute preparations for our summer holiday: organizing currency, checking routes, looking through last year's clothes to see what simply must be replaced – and in my own case sorting out all the church duties which have to be covered while I am away. There is always a build up of stress before a holiday, but it is great when you can just sit back, relax and enjoy a different routine and different experiences.

Doing something different is part of the joy of a holiday. We need a break from the normal routine, and we need to get away from day to day pressures. I often think of people from our villages sitting day after day in traffic jams or squashed up in an overcrowded train, struggling to get a task finished before the end of the working day, or rushing from one appointment to another in a very full diary. There can be a lot of pressures in modern living, and we need a break from it all.

We may spend that break lying in the sun, reading, or we may go for an activity holiday in which we create a whole range of new stresses for ourselves. Some people – I have to confess that I am not among them! – want a sporting holiday or one with a lot of physical challenge. Others may want to use the opportunity to learn a completely new skill, or to see new places and experience a different culture. We all need that sort of change “to recharge our batteries”, and even the most active holidays include space for relaxation and unwinding – and they all offer us time to think. Too often we get so caught up in the relentlessness of ordinary life that we never stop to ask where we are going and what it all means. We are in danger of losing our essential selves under all that is imposed upon us.

One of the great bonuses of a holiday is that it does give us space to stand back and look at our lives and ask, “where is all this taking me?” Holidays remind us of the necessary balance between work and leisure, between home and work, between self and others. When this balance is seriously disturbed life becomes disordered and this often expresses itself in some form of illness. How often do busy people come to retirement with no idea of how they might fill their time, simply because they never had time for hobbies and at the end of the working day just collapsed in front of the TV? Holidays give us an opportunity to ask ourselves how we might adjust the balance in our own lives to make them better for ourselves and those close to us.

Is my current life-style fair to me and to the family? Does it enable me to make a proper contribution to the wider community, to nurture friendships, to become a more mature and rounded person? What do I need to

**St. Mary's Eaton Bray**  
**Open Afternoon**

**Sunday 5th August**

**2 - 5pm**

**Parish Record Books, History  
and Photographs on Display  
Refreshments Available**

change – what can I change? Spend a little bit of time pondering these things as you lie on the beach, or climb mountains, or heave in the sails, or watch the countryside slip past the window. A holiday is a time to step back in order to move forward. Have a good holiday. Come back refreshed, and ready for a more meaningful life.  
MALCOLM

**From the Parish Registers**

**Baptisms – “Brought to new birth in the family of the Church”**

24 June Francesca Louise Ross  
Aimée Isabel Skinner  
1 July George William James Smith  
8 July Louis Roy Ellison

**Confirmation – “May they daily increase in your Holy Spirit”**

24 June – Confirmed by the Bishop of Bedford  
Abigail Heffer  
Fiona Stewart King

**Funerals – “Grant them, O Lord, eternal rest”**

6 July Marjorie Carey of Knight’s Close, Eaton Bray



**Services at St Mary’s Church**

**SUNDAYS: 8.00am** – The Eucharist  
**10.00am** – PARISH SUNG EUCHARIST (with Sunday School).  
**On Second Sunday of each month:**  
**10.00am** – WORSHIP FOR EVERYONE – a less formal service with Holy Communion

**WEEK-DAYS: Tuesday: 7.30am** - Eucharist  
**2.00pm (2<sup>nd</sup> Tuesday)** - Toddlers’ Church  
**Wednesday: 9.30am** - Eucharist  
**8.15pm (2<sup>nd</sup> Wednesday)** – Healing Service  
**Thursday: 7.30pm** - Eucharist  
**(on 2<sup>nd</sup> Thursday at All Saints’, Dagnall)**  
*EVERYONE WELCOME AT THESE SERVICES*

**HARVEST  
THANKSGIVING  
FOR ALL THE FAMILY  
SUNDAY, 30 SEPTEMBER  
10.00am  
at St Mary’s, Eaton Bray  
EVERYONE WELCOME  
CHILDREN INVITED TO  
BRING HARVEST GIFTS  
AUCTION OF PRODUCE  
AFTER THE SERVICE**

**NORTH CHILTERN GROUP  
OF PARISHES  
ANNUAL SERVICE  
St MARY’S, EATON BRAY  
PATRONAL FESTIVAL  
SUNDAY, 9 SEPTEMBER  
10.00am  
EVERYONE WELCOME  
TO SHARE THE CELEBRATION**

# Dunstable

47 Edward Street,  
Dunstable,  
Bedfordshire LU6 1HE

## WORKTOP SPECIALISTS

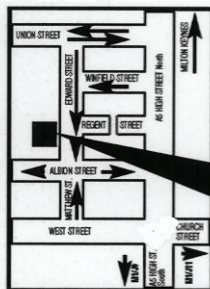


TOILET CUBICLES

CUT AND EDGE SERVICE  
POST-FORMED WORKTOPS



Email: [sales@dunstablelaminates.co.uk](mailto:sales@dunstablelaminates.co.uk)  
[www.dunstablelaminates.co.uk](http://www.dunstablelaminates.co.uk)  
[www.toiletcubicles.co.uk](http://www.toiletcubicles.co.uk)



WE ARE HERE

Send your  
specifications,  
drawings or sketch  
by fax or email.

Fax: 01582 608227  
Tel: 01582 668973

## Computer Support & Services

- ☑ After-sales services and support
- ☑ Windows troubleshooting
- ☑ Upgrades and repairs
- ☑ Computer hardware & software sales
- ☑ Internet & email assistance
- ☑ Network installations
- ☑ Web site design
- ☑ Basic & individual tuition
- ☑ Home visits

Computamation Services Ltd

☎ Daytime: 01525 378939

☎ Evening: 01525 261381

email: [john@computamation.co.uk](mailto:john@computamation.co.uk)

## in good spirits



### mobile bars

tell/fax: 01525 220443 mob: 07702 712856  
[ellie@ingoodspirits.co.uk](mailto:ellie@ingoodspirits.co.uk) [www.ingoodspirits.co.uk](http://www.ingoodspirits.co.uk)



## WASHING MACHINE REPAIRS

ALSO  
DISHWASHERS, TUMBLE DRIERS,  
AND ELECTRIC COOKERS



Call  
**ANDERSON D.R.S.**

**01582 665764**

[www.andersondrs.co.uk](http://www.andersondrs.co.uk)  
SALES AND RENTALS AVAILABLE

Buy Direct From Our  
Own Farm

Master Card

VISA

From **Ivinghoe Turf**

- Commercial & Domestic
- Small Orders Welcome
- Bark, Grass Seed & Fertiliser
- Laying Service
- Discount on Larger Orders
- Screened & Blended Topsoil
- All Year Availability
- Forklift Delivery Available



**ROLAWN**®  
Approved Rolawn  
Stockist

Family firm farming since 1949

**ALL AREAS**

Freephone :

**0800 043 5061**

[www.ivinghoeturf.com](http://www.ivinghoeturf.com)

The Bungalow, Vicarage Farm, Ivinghoe, Leighton Buzzard

## AARON FENCING

ALL TYPES OF DOMESTIC & COMMERCIAL  
FENCING & DECKING WORK UNDERTAKEN

- FREE ESTIMATES
- FULLY QUALIFIED & INSURED
- PERSONAL SERVICE AT COMPETITIVE PRICES

**TEL: 01582 665779**

**MOBILE: 07798 927272**

7 STATION ROAD, DUNSTABLE, LU5 4HS

## *Curtains 4 u*

Jan Robinson

Phone/Fax: 01442 843454  
Mobile: 0777 9029140



**Curtains with a  
certain Flair**

Very competitive rates for  
all your soft furnishing needs.  
Hand finished curtains a speciality  
Alterations and own fabric work undertaken

## *Garden Care*

of Slapton

Traditional Garden Maintenance  
and Landscape Services

Free Estimates & Advice

Telephone Eaton Bray 221454

Mobile 078302 86837

## BURDETT BUILDERS

General Builders  
Plumbing • Heating  
& Electrical Engineers  
Specialists in Hardwood Joinery

**01525 222793**

## **A J WARING CARPENTRY SERVICES**

*Local, experienced, & Fully Qualified.*

*All Carpentry Jobs Undertaken*

Contact now to avoid disappointment.

**Phone/Fax 01525 240691**

**E-mail [andrew.waring2@virgin.net](mailto:andrew.waring2@virgin.net)**

## **ARC Contract Services Ltd**

- Wallpapering and painting
- Laminate Flooring • Covings
- Tiling • Bathroom installations



Quality work at affordable prices  
Insurance work undertaken  
All work guaranteed for 5 years  
Public liability insurance cover

**FOR FREE PROFESSIONAL QUOTATION**

**CONTACT ADRIAN ON: 01582 539179 or  
07789 730580**

## **★ Star Performers ★**

Modern/ Pop, Ballet, Tap,  
Musical Theatre & Drama

Northall Village Hall &  
Forster Institute Linslade

A fun way for all children aged 4-16  
to keep fit & Healthy

For an information pack call

**07843 272791**

Places are limited

## **Toddington Fishery**

Hearn Farm Cottage, Park Road, Toddington

- ◆ Carp
- ◆ Cat Fish
- ◆ Tench
- ◆ Bream
- ◆ Roach
- ◆ Rudd
- ◆ Perch
- ◆ Chub
- ◆ Cruisan Carp

*For a good day's fishing in peaceful surroundings*

**For Details Phone: 07855 321781**

**[www.toddingtonfisheries.co.uk](http://www.toddingtonfisheries.co.uk)**



## **WHERE CUSTOMER CARE AND SERVICE STARTS CARPETS - VINYL WOOD FLOORING SPECIALISTS**

**LARGE RANGE OF REMNANTS AND  
DISCONTINUED RANGES AT FACTORY PRICES**

**SHOWROOM NOW OPEN AT**

**21C ICKNIELD WAY FARM, TRING RD, DUNSTABLE, BEDS, LU6 2JX  
WHERE WE HAVE A SELECTION OF IGOE BEDROOM FURNITURE  
AND PINE FURNITURE ON SHOW**

**To arrange our free shop at home service & view a wide range of  
samples in the comfort of your own home call:**

**FREE PHONE 0800 0850593 OR 01582 699273**

**SHOW ROOM OPEN BETWEEN 9AM-5.30PM MONDAY TO FRIDAY  
MOST MAJOR CREDIT CARDS TAKEN**

## *TMS Chauffeur*

### *Services*

Luton	£18.00
Heathrow T1,2,3	£45.00
Heathrow T4	£50.00
Gatwick	£70.00
Stansted	£60.00

**London, Theatres, Stations,  
Ports. Distance no object.**

**For a professional reliable  
service call:**

**01582 667710**

## **WILL KIMBERLEY GARDEN SERVICES**

**TEL/FAX (01442) 255784**

- **Grass Cutting regular or one off / lawn treatments**
- **Hedge cutting / Shrub trimming**
- **Overgrown gardens cleared**
- **Autumn / Winter tidy ups**
- **Fences erected and repaired**
- **Fruit tree pruning / tree lopping**
- **Leaf clearing / gutters cleared**
- **Patio / deck cleaning**

**IN FACT ANY JOB IN  
THE GARDEN**

### ***Susan Todhunter FCCA***

offers a friendly and personalised  
comprehensive service covering:

**Accountancy - Taxation**

**- Self Assessment -**

for

**- Individuals -**

**- Partnerships -**

**- Limited Companies -**

Advice from a qualified professional  
at an affordable fee

For a free initial consultation at  
your home or workplace, phone:

**01908 508181 or 01234 290333**

Bayler Wood Associates Ltd  
Chartered Certified Accountants

## **DELLS**

UPVC WINDOWS  
CONSERVATORIES

FACIAS and SOFFITS

**RING ANDY - 01442 826359**

**MOBILE - 0795 738 6239**

**FREE ADVICE • QUOTATIONS**

## **TV VIDEO AUDIO REPAIRS**

**BOB SMITH**

**EATON BRAY 221722**

**ALL WORK GUARANTEED  
FREE ESTIMATES**

**GARDEN  
EATON BRAY  
SCENE**

THE RYE  
EATON BRAY  
BEDS LU6 2BQ

TEL 01525 220104  
FAX 01525 222077

**GARDEN SCENE FOR:**

TOP QUALITY GARDEN PLANTS,  
TERRACOTTA AND GLAZED POTS,  
COMPOSTS AND FERTILIZERS,  
GARDEN ORNAMENTS AND  
SO MUCH MUCH MORE!"

*\* ALL TOP QUALITY  
AT LOWEST PRICES \**



OPEN 7 DAYS  
MON- SAT 9 - 5.30  
SUN 10 - 4.30

JOIN OUR FREE  
GARDENERS REWARD CLUB  
FOR EVEN BETTER VALUE

# James B Chadburn

Fine Antique clocks & Barometers  
Specialist in repairs & restorations

Movements / Casework / Silvering.  
Clock & Barometer parts sold.  
Valuations & Clock finding service  
Quality clocks & Barometers  
Bought & sold.



Telephone 01525 221165 Mobile 07790 000629  
E-mail: [jbchadburn@lineone.net](mailto:jbchadburn@lineone.net)

# MISTY DOUBLE GLAZING ?

DID YOU KNOW WE CAN REPLACE JUST THE GLASS PANEL

NOT THE WHOLE WINDOW FRAME

MAKING THE REPAIR MUCH, MUCH CHEAPER!

WE CAN EVEN TRANSFORM THE LOOK OF YOUR HOUSE BY CHANGING  
THE PLAIN GLASS PANELS TO LEADED LIGHT OR WHITE GEORGIAN PANELS  
WITHOUT REPLACING THE WINDOW FRAMES.

WE ALSO REPLACE BROKEN GLASS • HANDLES • HINGES & LOCKS.

FOR A FREE NO OBLIGATION QUOTATION CALL:

## QUALITY GLAZING SERVICES

01525 876808 (OFFICE)

07850 734517 (MOBILE)



# REVIVE

## HOLISTIC THERAPY

Holistic therapies are concerned with treatment through massage, manipulation and relaxation. They are not only treatments for one physical ailment or one part of the body, but also treat the person as a whole.

Ideal for today's stressful lifestyles.

Treatments include:

Aromatherapy Massage

Indian Head Massage

Reflexology

Reiki

Crystal Therapy

Also... Manicure / Pedicure

New: Reiki courses are now available. Why not learn how to become a Reiki Master so that you can help yourself as well as others.

Vouchers available, so why not treat a loved one or friend as well as yourself.

For more information or to book an appointment call Kate Meredith IHHT, RGN, on 01525221380

*Established over 10 Years*

# Duncan Tomblin TREE SURGEON

Forestry Contractor • Tree Felling  
Crown Reduction & Thinnings  
Deadwooding • Hedge Cutting  
Stump Grinding • Site Clearance  
Private Agriculture Fencing Contractor  
Chipper & Stump Grinding Hire  
Digger Hire

FULL PUBLIC LIABILITY INSURANCE  
FREE ESTIMATES

*'The Best Choice For Your Tree'*

**TEL: (01525) 221946**

MOBILE: (07802) 410728

12 Greenways, Eaton Bray, Beds

## Focus on Film Society

This September we start our second season. During our first year we have grown to just over 50 members and the society is now on course for another successful year.

We meet on the second Monday of each month between September and May in Eaton Bray Village Hall at 2.00 pm when we show a film chosen by our members. This is followed by a nice cup of tea and biscuits and a chance to chat. Our films are projected onto a large 13ft by 9ft Screen and we have recently purchased some comfortable padded chairs.

Membership is £32 per year payable in two instalments in August and January. If you would like to sample a film, come along for the first time as a guest for £4. Our programme for 2007/8 will be:

- 10<sup>th</sup> September – Memoirs of a Geisha
- 8<sup>th</sup> October – When Harry Met Sally
- 12<sup>th</sup> November – Paint Your Wagon
- 10<sup>th</sup> December – Ladies in Lavender
- 14<sup>th</sup> January – Brief Encounter
- 11<sup>th</sup> February – The Queen
- 10<sup>th</sup> March – A Good Year
- 14<sup>th</sup> April – Seabiscuit
- 12<sup>th</sup> May – Mrs Henderson Presents

**Qualified and Registered  
Childminder  
has vacancies,  
for more info contact  
07939 116262**

**Would any parents with children  
going to the Cottesloe School be  
interested in a car share as  
from September? Contact Lesley on  
07939 116262**

## EXCHANGE & MART

**For Sale  
1950s Upright Piano  
Excellent for beginners  
No charge - Just collect  
Tel: 01442 843574**

**Wanted  
for local event next year  
Loan of a full sized  
wooden wheelbarrow  
Please phone 221733 if you can help**

## HOLIDAY LETS

### Menorca – Cala'n Porter

Light, airy, comfortably furnished apartment; balconies front and rear; great location centre village; sleeps 4; one double bedroom, one twin-bedded room; large communal pool in private grounds.

**Tel: 01525 852368/07914 011241  
for brochure/details**

### Langham Barns

Fancy a break in Lincolnshire?  
Barns newly converted to high standard  
In rural location, 3 miles from coast

**Tel 01507 490313  
Mob 07717452610**

### Anarita Near Paphos Cyprus

Recently built luxury villa, 10 mins from Paphos town and 10 mins from airport

- Three double/twin bedrooms
- Two bathrooms
- Fully fitted kitchen
- Air-con
- Lounge/diner with TV/DVD player
- Own pool and garden

Beautifully situated overlooking sea and short walk into Anarita village which has taverna, supermarket and bar.

Rates vary according to season (£350-£750). Available all year.

**Contact Nicky 07980735955 or  
email [nicky.corehealth@virgin.net](mailto:nicky.corehealth@virgin.net)**

## HOLIDAY LETS

### **Luxury Holiday let in Orlando - Florida**

Privately owned luxury 5 bedroom villa with own screened pool just 15 minutes from Walt Disney World Resort.

Sleeps up to 12 people comfortably. The villa is furnished & fully equipped to a high standard.

\*5 Bedrooms \*3 Bathrooms \*Dining Room  
\*Kitchen \*Sitting Room \*Screened Pool Area  
\*Air Conditioning \*Private Pool (heated on request)  
\*Double Garage \*Washer / Dryer  
\*Dishwasher \*Microwave \*Kitchenware  
\*Linen \*TV \*Telephone \*Cot & High Chair

Located in a residential community just off US192 (junction 27) which means that most of Central Florida's theme parks and attractions can be reached within 15 - 20 minutes. Also numerous Championship Golf Courses local.

There is a supermarket, pizza delivery shop, bank, post office & petrol station all conveniently located within the development.

For Further Information Please Contact Us On

**01525 220879**

Graham & Karen Howard

### **Marbella - Holiday Let**

Five star **Designer Furnished** luxurious apartments located literally on the beach in San Pedro, just 2 km from Puerto Banus.

#### **Designer Furnishings**

**Luxury Kitchens with Granite Worktops  
Marbled Bathrooms with Jacuzzi Bath  
Award Winning Landscaped Gardens  
Swimming Pool and Waterfalls**

#### **Video Entry System**

**Underground Parking with Lift  
Large Terraces and Garden Area  
Choice of 2 bed ground floor and**

**NEW for 2005**

**A brand new 3 bed first floor apartment**

To view internal photographs and for more information please see

<http://bahiaibeach.mysite.freemove.com>

or feel free to contact us on

**01525 222753**

**Michelle and Kevin Reddington**

### **Sheplegh Court Nr Dartmouth, South Devon**

Lovely two bedroomed apartment in country house set in 30 acres of gardens, woods and parkland. Facilities available include:

- Heated outdoor swimming pool with sun terrace and barbecue area (summer only)
- Conservatory overlooking the gardens and parklands
- All weather tennis court.
- Snooker room with full size table
- Small indoor pool, jacuzzi and sauna

Secluded position on outskirts of award winning village yet within 3 miles of beaches and Dartmouth Golf and Country Club. Available for weekly letting or for three plus days out of season.

**For further details please telephone  
01525 220957 evenings and  
weekends**

### **Costa Calida Spain Isla Plana**

Isla Plana is a small village 2km across the bay from Puerto de Mazarron

The village has several bars & restaurants, a village shop, bakers, butchers & pharmacy.

Mazarron is a fascinating old town backed by rugged landscape of mountains. The town has a good selection of shops, restaurants & Sunday market.

#### **Luxury beach front apartment**

with stunning views across the bay from large private gated terrace, 2 bed, 2 bathrooms, all mod cons, air con & heating.

Large communal pool, separate children's pool & play area. Tennis court, video entry, underground parking.

Rent £250-£550 per week

Murcia airport 1 hour

**Contact Mandy 01525 874803**

# Act, sing and dance at Stagecoach



**AN HOUR TO ACT**



**AN HOUR TO DANCE**



**AN HOUR TO SING**

**S**TAGECOACH TEACHES children to act, sing and dance. We help them to stand well and move freely, express themselves more clearly, gain confidence and self-esteem—skills they learn for life. Schools open for three

hours at weekends during normal term time.

There is no audition—students need only to be enthusiastic and aged between 4 and 16.

For a Prospectus and more details please contact Wendy

Ashman at Stagecoach  
Leighton Buzzard on  
01525 222715



**STAGECOACH**  
THEATRE ARTS SCHOOLS

[www.stagecoach.co.uk](http://www.stagecoach.co.uk)



**J. LYDON  
and Sons**

Building & Ground Work  
Contractors

Mini Digger &  
Dumper Hire

With or without driver



**FREE Estimates**

Phone: 01525 877234

Mobile: 07855 321781

Email: lydonj6@aol.com

**Thinking about a new  
lawn, patio or complete  
garden makeover?**

**For a free, no obligation  
quote phone:**



**Tel: 01296 660628  
Mob: 07976 227785**

**Garden Design  
Lawns • Patios • Driveways**



## St Mary's Parochial Church Council Meeting

The meeting was held on 14<sup>th</sup> June at All Saints Church Dagnall.

It was noted that, sadly in common with all public buildings, we will have to display No Smoking signs by the church doors from July 1<sup>st</sup> 2007. The concert by pupils of Edlesborough School, held in St Mary's in aid of Christian Aid, had been very successful. The children and young people involved had put on an excellent performance for a very appreciative audience. Over £520 was raised for Christian Aid during the evening.

Another well supported event was the now annual "Open Gardens" day on Sunday 9<sup>th</sup> June. The weather was kind and we were all able to enjoy the day. Funds raised will be split between the Chiltern MS Centre and St Mary's Roof fund. This is expected to be in excess of £2,600.

### July meeting

All of the members of the PCC asked Peter Bennett to pass on their congratulations to the **Carnival** Committee on a highly successful event. It was a wonderful day for the community and succeeded in raising a record amount for local good causes.

The PCC was pleased to continue the established policy of subsidising the rent payable by the **Village Hall**. This year the rent is to be reduced from £2939 per annum to £758, a discount of £2181 or 75%

The **Harvest Supper and Barn Dance** is to be revived and will take place on Saturday 29<sup>th</sup> September in Eaton Bray Village Hall. Tickets will be £7.50 for adults, £3.50 for children and a family ticket (2 children) for £20.

The monthly **coffee morning** hosted by The Friends of St Mary's will move to the first Saturday of the month at 10.30am with effect from September.

We took a further step towards becoming a **Fairtrade** Parish by agreeing to use Fairtrade teas and coffees at Church events. We will redouble our efforts to use other Fairtrade products wherever possible.

Preliminary details were provided of the **2008 Flower Festival** which will take place in St Mary's Eaton Bray over the weekend of 19<sup>th</sup> – 21<sup>st</sup> September. This will be a weekend of spectacular floral displays and events in the church.

The **Welcome Pack** is ready to go to print and will be available for distribution shortly.

The Church Mouse

---

### The Villagers – Pig Roast at Edlesborough Mill on 1<sup>st</sup> July

Thankfully the weather was kind to us and a good time was had by all. We raised £3,345 to be equally distributed between Iain Rennie Hospice at Home and MacIntyre Homes. The total raised was greatly helped by the Barclays Community Investment Programme which helps retired members of staff with fundraising by matching £ for £ up to £750.

Thank you to all who came to the event and supported us so generously, and our thanks to Richard and Ann Grant for so generously allowing us to use their beautiful house and gardens.

## Carnival 2006 – Favourite Adverts

What a Day! This years Carnival was a record in so many ways. But most of all it seemed like the whole population of the four villages had turned out to celebrate. In the process we raised a staggering £11,000 for local good causes and I say “we” because everyone there deserves credit for the achievement. Not only did we raise record money but even the worm-charmers achieved a carnival record – 26 worms – congratulations. Many of the stalls sold out and there were queues all day for some of the attractions like the Climbing Wall. I think we all thought that we would spend the day wet and with mud all over our clothes but not a bit of it. The sun shone for the first time for weeks and, apart from one short shower, the day was dry. All the results will be found elsewhere in Focus and so it falls to me to thank all those that attended, all that decorated their houses and all those who gave goods, time and cash to ensure the Carnival’s success. Thanks also to Stephen Rhodes for opening the event and for judging the floats – I know everyone enjoyed his light touch throughout. Finally, thanks to my magnificent committee of Chris and Sheila Banks, my wife Eileen, Roger Cook, Sonia Dean, Sue Gladin, Katrina Grant, Gordon Gray, Theo Gray, Bernadette Hillman, Norman and Ann Lee, David Marriage, Heather Martin, Mark Saccoccio, Lin Sargeant, Rebecca Shaw, Peter Thomas, and Roger Wilkinson.



*Intrepid climbers scale the Mont Blanc Wall*

If you have a favourite local good cause please call me on 221284 or contact me through the website so that they may be considered for a grant from the proceeds of this year’s event.

Our web site is [www.stmarysvillagecarnival.com](http://www.stmarysvillagecarnival.com) – do go there and look at the collection of photographs – you may see yourself!

If you would like to be involved in the running of Carnival 2008 on July 5th call me on 221284, I would love to hear from you.

Peter Bennett – Chairman



*Stephen Rhodes presents prizes*

### **The Procession Winners**

**Pre-school & Lower School:** 1<sup>st</sup> Eaton Bray Pre School Playgroup, 2<sup>nd</sup> Eaton Bray Lower School, 3<sup>rd</sup> Edlesborough Under 5’s

**School Age Organisations:** 1<sup>st</sup> Eaton Bray & Edlesborough Cubs, 2<sup>nd</sup> Friends of Edlesborough School.

**Family & Business:** 1<sup>st</sup> Janes of Edlesborough, 2<sup>nd</sup> The Bell Public House, 3<sup>rd</sup> Hawkes Family.

A new trophy was presented this year dedicated to the memory of Norah Coates, a much loved local resident and churchwarden at St Mary’s parish church in Eaton Bray.



*The Milky Bar Kid's in Town!*

It was presented to the winner of the Pre-School & Lower School category for the procession.

### **Other Competitions**

**Clarabelle the Cow's Prize money** of £110 was won by Mrs Evans from Leighton Buzzard

**Best Dressed House** The Leighton Buzzard Observer trophies were won by no. 130 High St, Eaton Bray and no. 60 Moor End, Edlesborough.

**Worm Charming** This year the winners of the worm charming competition found 26 worms in 30 minutes!

## **Grand Draw**

<b>Prize</b>	<b>Sponsor</b>	<b>Winner</b>
Weekend in Rome	Hotel Quirinale	Jeremy Bennett
Visit to Houses of Parliament	Andrew Selous MP	Jenny Ray
Tickets to four Royal Palaces	Penny Sydenham	Mr. Durrant
Teeth whitening	Pieter le Roux	Alison Grant
Dinner for two	Tom Hodge, Bellows Mill	Sharon Vilejon
Case of wine	Peter and Eileen Bennett	Mrs. Taylor Crawford
Golf for four	Mentmore Golf Club	Maude Quantrill
Eyebrow beauty treatment	Lorinda le Roux	Lisa
Gliding with the	London Gliding Club	Penny Pataky
Golf for two	Dunstable Golf Club	Maggie Kerr
Greetings card and box	Sally Taylor, Phoenix Cards	Sharon Vilejon
Ornamental tree	Brian McMahon, Grass Roots	Mark Saccoccio
Meal voucher	The White Horse, Eaton Bray	Brian McMahon
Meal for four	The Swan, Northall	Mrs. Coleman
Meat voucher	D. & E. Hines	Mr. Hanlon
Fly fishing at Bellows Mill	Rachael Hodge	Susan Crofts
Family ticket	Mead Open Farm	Mr. Owen
Harper's basket	Harpers of Studham	Ian Ruffle
'Hairdo'	Profile Hairdressing, Edlesborough	Peter Thomas
Theatre tickets	Leighton Buzzard Theatre	Marie Simmons
Fishing at Watermead	David and Valerie Richards	Tia Fry
Sunday Lunch for two	Café Masala	Mrs. Walsh
Cinema tickets	Empire Cinema, H.H	Mrs. Edmonds
Bowling tickets	GoBowling, Dunstable	Muriel Seymour

What a day we had this year – wonderful weather and large crowds – most of whom seemed to want to buy a Grand Draw ticket! Thank you to everyone who bought them, whether at the Carnival or from one of the people who sold so many prior to Carnival Day; to all my 'sellers' (I could never do so well without your unstinting support) and again to my 'team' on the day, Norman, Deirdrea and Gaynor. THANK YOU! Ann Lee



## Dagnall Baby & Toddler Group

Dagnall Baby & Toddler sessions are held every Thursday during term time at Dagnall Village Hall. Sessions run from 12:45 - 2:45pm or arrive at 12:15pm with a packed lunch. There are lots of toys to play with, craft activities and an enclosed outdoor play area. The cost is £1.00 per adult and child, 50p for each additional child. Tea and coffee are provided and children sit down for a drink and biscuit. Parents/carers must be responsible for their children at all times.



Join us for an

## Oo La La! Evening

With French wine, fabulous food and ambience!

In aid of Iain Rennie Hospice at Home  
**Saturday 27<sup>th</sup> October, 7.30 pm**  
**Dagnall Village Hall**

**Tickets £12**

Available from

**Pascale on 01442 842 857**

or by email:

**pjmartin15@hotmail.com**

**French wear suggested!**

Charity number 297847

## HARVEST SUPPER & BARN DANCE

**SATURDAY 29 SEPTEMBER**

**7.00pm**

**EATON BRAY VILLAGE HALL**

Tickets from Sharon Stilliard  
tel 01525 222283

£7.50 adult, £3.50 child, £20 family



**Hot Supper  
& dancing to  
live band  
'Buffalo'**



**Proceeds to  
St Mary's Parish  
Church Roof  
Appeal**

Fitness Through Movement, Exercise & Dance

## KFA Body Moves

**40+**

- Move your body, challenge your mind and meet new friends at the same time
  - Body Moves classes are planned and taught by fully qualified KFA teachers, providing a well balanced session of workouts that really do get you moving
  - No experience required, just willingness to take part
  - A whole body approach to keeping healthy
- Classes are held every Thursday evening at Edlesborough School commencing 13th September 2006, 8 to 9pm

To find out more please call

**Pat on 01582 668735**

(a Qualified Registered KFA Teacher)

KFA Body Moves is a registered trade name of The Keep Fit Association. The KFA is supported by Sport England, is a member of the Register of Exercise Professionals and is a Training Provider for NCFE accredited courses in teaching Fitness through Movement and Dance to Level 3. Visit us at [www.KEEPFIT.ORG.UK](http://www.KEEPFIT.ORG.UK)

Edlesborough W.I.  
**COFFEE  
MORNING**

In aid of W.I. Funds

**Thursday 16th August 2007**  
**10.30 am - 12 noon**

At home of Christine Yates

**Brooklyn Farm**  
**Cow Lane**  
**Edlesborough**

**Bring & Buy**  
**Raffle**

**Entry: £1.50**

**A Warm Welcome to Everyone**



*Edlesborough  
School  
are holding an*

***Open Day***

*for prospective parents on*  
**Thursday 27<sup>th</sup> September 2007**  
*from 9.30 – 11.00 a.m.*

*We look forward to seeing you*

**Dagnall Over 60's Club**

An Evening with

**Jean Martyn** L.G.S.M., A.T.C.L.  
International Concert Organist

A return visit if this popular artiste

**Saturday September 15th 2007**

at  
**7.30pm in Dagnall Village Hall**

**Tickets £6** to include refreshments

All proceeds between Over 60's Club  
& Dagnall Church Funds

*Friends of St Mary's Eaton Bray*

**Saturday 1st Sept.**

**Saturday 6th Oct.**

**10.30 – 12.00**

**COFFEE MORNING**

**Stalls**  
**Refreshments**  
**Bring & Buy**  
**Raffle**

**At St Mary's Church, Eaton Bray**

**AGE CONCERN**  
**BUCKINGHAMSHIRE**  
**NORTHALL & DISTRICT**

**HARVEST FESTIVAL**  
**AUCTION**

**WITH PROFESSIONAL**  
**AUCTIONEER**  
**AT**

**THE SWAN NORTHALL**

**FRIDAY 28<sup>th</sup> SEPTEMBER**

**7.30pm**

**SALVATION ARMY BAND**

**Followed at 8.00pm by**  
**THE AUCTION**

# Minutes of the Eaton Bray Annual Parish Meeting

## 8<sup>th</sup> May 2007 at 7.30 p.m.

### Public open forum:

None

### Matters arising:

With the agreement of all present, the Minutes of the Annual Parish Meeting held on 8th May 2006 were signed by the Chairman as a true and accurate record.

It was agreed that the Parish Councillors attending the Annual Parish Meeting should examine the Minutes of the meeting and approve the contents at the June 2007 Parish Council Meeting.

Final acceptance of the Minutes to remain on the agenda for the 2008 Annual Parish Meeting.

### Projects completed and on-going:

#### 1. Cemetery

Extensive work has been completed in the general appearance and control of overgrown trees shrubs etc. The garden area has been replanted. Land that had been leased out has been reclaimed (end of lease) and prepared for extending the burial area. A cemetery warden has been appointed to review the present regulations together with the Parish Council to allow for any future improvements and ease of management in the future.

#### 2. Litter Bin

A further litter bin has been provided in School Lane recreation ground.

#### 3. Parish Council/School Council

After a discussion with Mrs Hounslow head of Eaton Bray Lower School, two meetings of the school council and the Parish council took place. This proved to be very successful and further meetings will be arranged in the future, alternating the venue between the school and the Coffee Tavern.

#### 4. Allotments

A new conditions and working document has been prepared by the allotment warden, General Purposes committee, and agreed by the Council. The new terms have been distributed to the allotment holders. With the new/amended regulations in place the Parish Council will be pro-active in helping the allotment holders to maintain a neat and tidy appearance for the benefit of allotment tenants. At the request of the allotment holders an additional water holding tank has been provided.

The village handyman has completed strimmer training and will be able to help maintain the allotment area.

The clerk reported that 24 of the 26 plots at The Meads are now let.

#### 5. Traffic Calming

This is an ongoing project that with the help of the specialised police, highway authority and other personnel has resulted in a vehicle check at three points in the village on the amount and speed of traffic passing through on a 24/7 basis. The findings have proven to the authorities that we do have a speeding situation at certain points in the village. We are, together with village residents, presently exploring the

### Eaton Bray Parish Council Meetings

1st Monday of every month

7.30pm The Coffee Tavern

Next Meeting: Mon 3rd Sep 07

various options that are open and affordable to us.

## **6. Coffee Tavern**

From April 2007 the Coffee Tavern and Reading Room plus the cottage at 20 High Street has its own management structure consisting of the Coffee Tavern Board of Trustees.

The Board of Trustees have a controlling document, management structure, an accounting system and banking which is now entirely separate from the Parish Council. A great deal of time has been spent by the Parish Clerk in preparing all necessary documentation as have the councillors and the present Trust management.

The cottage at No 20 High Street, being vacant, has had a considerable makeover in the past months and is now practically ready for occupation; the cottage will be administered through letting agents.

## **7. Play Area Equipment**

All equipment was inspected during 2006 and items dealt with as recommended in the report by the inspection authority(s) and all equipment re-painted.

## **8. Village Sign Post**

The Council was successful in obtaining a grant from the Chilterns Grant Scheme and are to take delivery of a cast metal sign which will be sited on the green outside the off-licence, pointing to various village locations.

## **9. Telegraph Pole**

The telegraph pole on The Pound, opposite The Five Bells pub, has been re-sited to ease the management of this area.

## **10. Public meets the Parish Council**

The Saturday mornings set aside for the village folk to come and see/talk to us have been suspended due to the low numbers of people actually coming to meet us, even though we tried to tempt them with coffee and mince pies or hot cross buns.

# **Highlights of Minutes of the Eaton Bray Parish Council Meeting Held on 2nd July 2007 at 7.30 p.m.**

## **Public forum:**

Comments received about damaged fencing and lack of signs at the conservation area adjacent to Mill End Close. The chairman assured the meeting that this was not being ignored and that he and the clerk are in the process of arranging the work to be done.

## **Chairman's comments & correspondence:**

The following items have been received.

- a.) Two letters from residents commenting on vandalism and litter in Bower Lane cemetery.
- b.) Information from SBDC advising the PC that it is unlikely that the metal bottle bank bins would be replaced as suitable alternatives were unavailable, but roadside glass collections may commence in the autumn.
- c.) A letter from Victim Support Bedfordshire asking for support. It was agreed to donate £50.
- d.) A copy of a letter to from Bedford Group of Drainage Boards in response to

problems with flooding.

e.) A consultation document from Beds.County Council Community Safety Team.

f.) A reply from the Bedfordshire Chief Constable in response to the Chairman's letter.

### **Signing of Minutes:**

It was agreed to accept the minutes of the Parish Council Meeting held on the 4<sup>th</sup>. June 2007.

### **District & County Representatives:**

District Cllr Janes reported that the Ministry for Local Government is due to make a decision on Unitary Authority for Bedfordshire on 25<sup>th</sup> July.

There has been a special planning meeting to discuss outline planning for the expansion areas of Leighton Buzzard, there will be a further meeting before decisions are reached.

County Cllr Piggott informed the PC that he is seeking suggestions for bids from voluntary organisations in Eaton Bray for small grants from the County Councillor Funding budget.

### **Report of Special Planning Meeting:**

Cllr Heyland reported that the appeal started in April has been suspended awaiting further information and consultation and will recommence in July 2007.

Cllr Brand commented that Eaton Bray was shown as an area of possible expansion on a recently published map showing planning proposals. Cllr Janes responded that his understanding of the situation is that there is currently no plan to expand the village, only infill development. In addition to the proposed development areas South of Leighton Buzzard, the proposed by-pass link to the M1 would create a possible corridor for future development.

County Cllr Piggott commented that the recent publications are consultation documents, a number of different suggestions are being considered for the area and it is important that opinions are voiced.

### **Flood committee report:**

Cllr Windmill reported a productive meeting in which the history of the problems was discussed. It is hoped to organise a meeting with all the relevant agencies.

### **Vehicle Activated Signs (VAS):**

Cllr Marriage reported that the PC has received confirmation of funding.

The Chairman expressed the council's thanks to Cllr Marriage and County Cllr Piggott for their work in support of this project.

### **Next agenda:**

Items for the September agenda to be requested no later than Fri.24<sup>th</sup>.August 2007. The meeting closed at 22.10. **Contact the Parish Clerk on: Tel 01582 699722; email: clerk@ebpc.co.uk**

### **Age Concern...**

are looking for a driver to help on a Wednesday (about once a month). It is a very rewarding and friendly atmosphere. Please contact John Plater on 01525 221095 if you are interested.

### **Edlesborough School Lights**

The moonlight shines in the dark  
The sunlight shines in the day  
But what time does the moon come up and the sun fade away.  
Ollie Mulcahy, Year 2



**PUERTO BANUS  
MARBELLA  
SPAIN**



Recently built luxury 3 bedroom, 2 bathroom apartment approx 1 mile from centre of this well known Spanish marina. 45 mins easy driving from Malaga airport, served by Easyjet, Monarch etc.

Facilities include all mod cons including air-con, satellite TV, fully equipped kitchen, swimming pools, excellent clubhouse and tennis courts. Many golf courses and all weather bowling greens nearby. Climate makes this ideal for holidays throughout the year. Rates vary according to season (£300 - £750)

For a brochure and details call Peter or Celia on **01525 220173** or email [hpkillfoyle@aol.com](mailto:hpkillfoyle@aol.com)



## **Bellows Mill**

*Attractive Accommodation  
in Idyllic Surroundings*  
**Telephone: 01525 220548**

### **a la carte Restaurant**

**Lunch 12.30 - 2.30 pm**  
**Thursday to Sunday**

**Dinner 7 - 9 pm**  
**Wednesday to Saturday**

**Booking Essential**  
**Telephone 01525 229649**

**Email: [reservations@bellowsmill.co.uk](mailto:reservations@bellowsmill.co.uk)**  
**Website: [www.bellowsmill.co.uk](http://www.bellowsmill.co.uk)**

*Surgery Now open 7 Days a week*

*HPC Registered*  
**CHIROPODIST & PODIATRIST**

*Est. 1992*  
**Johnstons Ltd**  
*23 Upper George Street Luton LU1 2RD*

*Telephone for appointment*  
**07981 749038**

*Central Luton surgery & home visits locally*

## **R.J.O'CONNELL BUILDING SERVICES**

**EXTENSIONS, PATIOS,  
DRIVEWAYS, ROOF REPAIRS  
AND PROFESSIONAL  
DECORATING SERVICE**

**TEL: 01296 681323**  
**MOB: 07855 236726**

*Painting/Decorating Curtain Rails  
Kitchen Fitting Tiling Shelving/Flat Packs*

**YOU need LITTLE JOBS if**



Shelves scare you, flat pack frustrates you  
or mowing doesn't move you,  
you need someone to **Do It for You**

For your General  
Home Maintenance needs

**Contact Carl Bird on 01582 703039  
or Mobile 07773 230055**

*Floor Laying Gutter Cleaning Fencing  
Loft Boarding Gardening etc.*

## **EDaN (Edlesborough Dagnall and Northall)**

### **Project Update at 9<sup>th</sup> July 2007**

#### **EDaN Photo Competition Results Announced at St. Mary's Carnival**

The results of the EDaN Project photo competition were announced at the St. Mary's Village Carnival on 7<sup>th</sup> July.

Adult – 'What I like about my village' – Winner **John Allison**, Runner Up **Penny Smart**

Adult – 'What I dislike about my village' – Winner **Mrs Biggs**, Runner Up **Penny Smart**

8 – 16yrs – 'What I like/dislike about my village' – Winner **Jessica Ho-Berridge**, Runner Up **Annabel Copen**

Under 8's – 'What I like/dislike about my village' – Winner **Jade Tickle**, Runner Up **Sam Bramston**

The EDaN steering group thank Dorman's in Dunstable and Kodak for donating prizes for the winners and runners up. We also offer thanks to our judges: Canon Malcolm Grant, Eileen Bennett and Susan Carter. The judges had to spend considerable time making their selection from the many interesting and varied photographs. All entrants under 16 will receive a certificate.

The overall winner was **Jessica Ho-Berridge** with her excellent photo of a bird nesting in her garden. Jessica received an engraved trophy kindly donated by Mrs. Christine Yates who selected Jessica's photo as the overall winner.

#### **EDaN Questionnaire – the next step**

The input received from the 'sticky note' boards at the four EDaN Open Days is being used to compile a questionnaire. This will be distributed by hand in late September to all households in Edlesborough, Dagnall and Northall and we will return later to collect it.

Achieving a high response level to this questionnaire is vital. This will ensure we produce a list of recommendations and an action plan with priorities that is truly representative of the residents input.

Following publication of the Parish Plan (independent of the Parish Council), the next stage will be to seek funding to implement projects that ensure the three villages comprising our Parish remain great places to live and work.

#### **Are you under the age of 40? Your village needs your input**

The EDaN Project needs input from all age groups in the parish to ensure a balanced view of the residents. Our analysis of those attending the four Open Days held in May and June shows we still need more input from the 'under 40' age group especially families with pre-teen and teenage children. The questionnaire mentioned above will provide you a further opportunity to make your views known. Please complete your copy to ensure the suggestions and opinions of the under 40's are fully represented.

#### **Is it worth it?**

'Will anything be achieved by all this consultation?' we have been asked. Well, other villages in Buckinghamshire who have produced a Parish Plan have achieved many things in line with the type of issues raised to the EDaN Project at the Open Days, e.g.

- Tingewick have just completed an affordable housing project.
- Lacey Green managed to save their Post Office.
- Twyford have opened a community shop.
- Maids Moreton have received funding for village hall improvements.
- Lacey Green has implemented traffic calming.
- West Wycombe has saved their village shop.
- Princes Risborough have a new Youth Club.
- Stokenchurch and Radnage have built a new playground and a new cycle path is currently going through the Rights of Way budget at County Council level.

So yes, it really is worth it! For more information about the EDaN Project please see [www.edlesborough.gov.uk](http://www.edlesborough.gov.uk) – click on **Parish Plan** or contact Vicky Lee (EDaN Project Secretary) on 01442 843 361

## EB Lions AFC

Going into the 2007/2008 season we have 10 teams, including two girls' teams, which is fantastic news. We would like to develop even more teams and to involve more children but the main obstacle that we suffer from is a lack of pitches/amenities. Edlesborough Parish Council kindly allow us to have two 7-a-side pitches on the Green and we have applied for use of a third 7-a-side pitch at Dagnall. Our 11-a-side teams play at Edlesborough School and at Holmans Field in Eaton Bray.

It would be wonderful for the future development of the village, children and community if we were to secure our own 'Ground', with 11-a-side and 7-a-side pitches altogether, an all weather pitch and training area, coupled with club house/changing room. We know from talking to Miss Hatfield at Edlesborough School and Nick Evans at Scouts that they would also make great use of such facilities for sporting and outdoor use and this would give the community a fantastic amenity too. We know that we can secure substantial funding from the Football bodies for such a project, so money would not necessarily be as big a hurdle as people might think. If anybody knows of a suitable site we would be grateful if they could inform the Club chairman, Andy Lancefield ([lancers@onetel.com](mailto:lancers@onetel.com)).

Recently we received news that our U15 team have won the Fair Play Award for the 2006/2007 season from the Chiltern Youth League. This is the second time that they have won the award. The U7 team took part in a Mini Soccer Festival at Kempston on 7<sup>th</sup> July, where the emphasis of the day was to encourage fair play. They were second in the fair play awards for their age group and their manager was very pleased with their performance. Although the organisers stressed that teams would not be judged on results and scores it was encouraging to note that EB Lions won 5 of their 6 matches which bodes well for the coming season.

For more information about the club please access our website at [www.eblions.co.uk](http://www.eblions.co.uk).  
Liz Coates, Press Officer, EB Lions AFC.



*Piano, Cello &  
Theory of Music*

*Tuition from beginners to  
advanced standard.*

*Vacancies available for daytime & evening  
lessons (beginner adults very welcome).*

 **Contact:**  
*Jane Lodge (PGCE MUS B HONS)*  
*Telephone 01525 222803*

**Stuart Ball**

**Ceramic Wall & Floor  
Tiling Specialist**

**Over 24 yrs Experience**



**City and Guilds  
of London Institute**

**Tiles supplied or Labour Only**

**For a reliable service call  
your Local Tiler**

**Eaton Bray 229381**

**N.D.S.**

**General Building & Plumbing**  
(Established over 15 years)

- Extensions - Loft & Garage conversions etc.
- Kitchens & Bathrooms fitted
- Installer of PVCu guttering, soffits & fascia boards
- Roofing • Patios & Block Paving

**Tel: 01525 221470**

**Mobile: 07941 563424**

*FREE ESTIMATES*

...

*NO JOB TOO SMALL*

*Christopher*  
**PALLET**



*Chartered Surveyors - Valuers - Estate Agents*

Now firmly established in the villages of Eaton Bray & Edlesborough, Christopher Pallet is independently owned and run by Branch partners Colin & Linda who offer a friendly, professional, caring approach to the often stressful process of house moving.

3 Summerleys,  
Edlesborough, LU6 2HR  
Tel: 01525 222333

[www.christopherpallet.com](http://www.christopherpallet.com)

www. **DRIVESTYLE VANS** .co.uk

Now you can buy our used vans directly via our website.



## LOW COST VAN & TRUCK HIRE

You Can't  Our Vans

Dunstable  
London Road  
01582 600465  
LU6 3DH

Milton Keynes  
Wolverton Railway Station  
01908 319777  
MK12 STN

Flitwick  
High Street  
01525 715000  
MK45 1DU

**S E W S O F T**  
interiors



- ❖ Handmade Curtains and Valences
- ❖ Roman, Venetian, Vertical and Roller blinds, Cushions and Upholstery
- ❖ Tracks and Poles
- ❖ Everything beautifully made and fitted to the highest standards
- ❖ Exceptional personal service in your home, taking care of all the details, reducing your stress
- ❖ You can use your own or choose from a range of the latest fabrics as well as the more traditional favourites

Call me  
**Sue Hawkins on Whipsnade**  
**(01582) 873358**

### A.P Welding

Motor Repairs & Welding Services

Free collection & delivery

cambelts, diesel, petrol

MOT's arranged

established over 20 yrs

Unit 6

81 Leighton Road

Stanbridge, nr

Leighton Buzzard

call

01525 211707

07986033428



### FLORIST

Inspirations  
by Christine

Bouquets, Floral Arrangements &  
Sympathy Tributes at competitive prices.  
Local Delivery

For a truly personal service contact me on

Christine 07801 844885





## DIGITAL & ANALOGUE

TV & FM Radio Aerials  
Satellite Installations  
Extra TV & Satellite Points

**FREE ESTIMATES**

**☎ 01525 852912**

**☎ 07710 429678**

## HAT TRICKS

*Weddings • Ascot • Special Occasions  
Hats to Hire • Hats to Buy*

*Your own hat trimmed  
to co-ordinate with your outfit.*

**Telephone 01582 873822**



## WESTROPE BROS.

**LAWN MOWER SERVICES**

*ALL TYPES GARDEN MOWERS SERVICED*

**THE RYE, EATON BRAY**

Tel: Eaton Bray 220587

## RD ELECTRICAL

**Specialising in all types of Electrical and Air  
Conditioning installations including**

- LED Lighting – indoor and Outdoor
  - Garden & Patio lighting
- Scene setting – programmable dimmers
  - Re-wires
  - Security Lighting
- Kitchen and Bathroom specialist lighting & wiring
  - Testing and inspection
- Air conditioning throughout your home

**FULLY INSURED AND PART P QUALIFIED  
NAPIT Registered.**

**Call Richard Ellison on 07932 759680  
or 01525 221475**

*116 High St, Edlesborough, Bucks, LU6 2ER*

# MOT TEST CENTRE

**ROEBUCK GARAGE**  
HIGH STREET  
EATON BRAY  
220385

## McTimoney CHIROPRACTIC



Margie Craib BSc BHSI DC AMC MMCA  
Human and Animal Treatments

Ashridge Farm, Ringshall, Berkhamsted, Herts HP4 1ND  
Telephone: (01442) 842729

General Chiropractic Council Registration No. 293



## Moren Associates Limited

Newsletter Creation & Editing  
Book Typesetting  
Presentations  
Typing  
Document Reformatting  
Spreadsheets  
Adverts

Poster, Flyer & Leaflet Creation  
Basic Web Creation/Maintenance  
and more...

**Tel: 01525 229695**

Email: [enquiries@morenassociates.co.uk](mailto:enquiries@morenassociates.co.uk)

**[www.morenassociates.co.uk](http://www.morenassociates.co.uk)**

## ADRIENNE'S PRIVATE HIRE

Call for a **FREE** quotation  
*Book early to avoid disappointment*  
*Very competitive prices*

Airport Transfers  
& Private Hire

**07980 039715**

*Our executive Cars, 6 seater Minibuses and  
lady driver are all available*



## GRASS ROOTS

GARDEN MAINTENANCE

*Including*

TREE SURGERY  
SELECTION, SUPPLY &  
PLANTING OF TREES,  
SHRUBS & HEDGES.

(Fully insured)

Tel: BRIAN McMAHON  
NCH (Arb)

EATON BRAY 221960



**Rose  
Cottage  
Interiors**  
*for Quality  
Hand Finished  
Curtains*

Soft Furnishing, Interior Design  
& Upholstery Service  
*Fabrics available*

Handmade Curtain Specialist  
Swags & Tails ● Pelmets ●  
Valances ● Tie-Backs  
*Clients own fabric welcome*

Jane Euston • Rose Cottage  
Northall Road • Eaton Bray  
Tel/Fax: 01525 221034

*THE COMPLETE BUILDING SERVICE*

**S.M. REILLY & SON**

**Established 1987**

**GENERAL BUILDERS**

*Extension Specialists*

**Tel: 01525 221740**

**Mobile: 07970 637511**

Plastic Fascia & Soffit – Double Glazing  
Windows – Doors - Conservatories  
Decorating - Drives - Porches  
Barn conversions - Roofing



**Tel**  
**01525 222145**  
**Mobile**  
**07971 559185**

# Lee Hutt

## Heating and Plumbing Services

**FREE ESTIMATES GIVEN**  
**NO CALL OUT CHARGE**  
**ALL WORK UNDERTAKEN**  
**INSTALLATION, REPAIRS**  
**NO JOB TOO SMALL**  
**DOMESTIC & COMMERCIAL**

## **J.M.C. PEST CONTROL**

Wasps, Ants, Fleas, Cockroaches  
Flies, Rats or Mice dealt with  
professionally and efficiently.

All work guaranteed

Unbeatable Service • Prompt & Discreet  
Very Competitive Prices.

Wasp Nest £39 • Ants from £45

Mobile: 07973 407027

Business: 01582 471766

## **St Judes Clinic**

26 Lake Street, Leighton Buzzard  
Beds LU7 1RX

**Physiotherapists**

**Chiropodist, Podiatrist**

**Reflexologist, Acupuncturist**

**Women's Health Service**

**Your local health Professionals**

Practice Principal

Moira D'Arcy MCSP

Tel: 01525 377751

Member of  
The Organisation of  
Chartered  
Physiotherapists in  
Private Practice



**Ring Garry**

**01582 477568**

**Mobile**

**07949 118011**

**Fence Panels • Blockpaving**  
**Shingle Drives • Paths • Slabs**  
**Steps • Gardenwalls**  
**New Patios • Relaying**  
**Soak Aways • Drainage**  
**Free estimates or advice**  
**References**



# Trading Faces



*Unisex*  
*Hair & Beauty Salon*  
*and Chiropody Surgery*  
*(HPC Registered)*  
*Open 11am til Late*  
*01525 229111*

**G.R. Davis** LCG

Honeywick Works, Eaton Bray  
**Cabinet Maker • Carpenter • Joiner**  
House Interiors  
Handmade Kitchens  
Can also supply and fit Crown Imperial  
kitchens, wardrobes and desks  
Home: 01582 600086  
Mobile: 07759 856566

## D & E HINES

**High-Class Butchers**  
**Quality Beef, Pork & Lamb**  
**Grade A Poultry**  
**BBQ & Sausage Speciality**  
*Renowned for 'Bunkers Sausages'*  
**Telephone: 01525 220413**

## CLEANING SERVICES

**- GREAT OUTDOORS & IN -**  
*THE LOCAL COMPANY THAT CAN CARRY OUT*  
*ALL OF YOUR CLEANING NEEDS!*

### **PRESSURE WASHING**

- BLOCK PAVING & PATTERN IMPRINTED CONCRETE (PIC) REFURBISHED
- DRIVEWAYS/PATIOS/PATHS
- WALLS / FENCES
- CONSERVATORIES - HAND CLEANED (INSIDE / OUT)
- GRAFFITI REMOVAL

### **INTERIOR CLEANING**

- OFFICES & HOUSES
- BUILDERS CLEANS
- PRE - POST LET
- CARPETS & UPHOLSTERY (ALL STAFF PROCHEM TRAINED)
- HARD FLOORS REFURBISHED

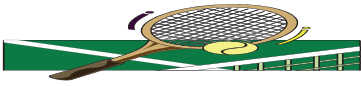
**0800 298 5883**

**FOR MORE INFORMATION VIEW OUR WEBSITE**

**[www.greatoutdoorsandin.co.uk](http://www.greatoutdoorsandin.co.uk)**

**37 Oldhill, SW Dunstable**





## Eaton Bray Lawn Tennis Club

Next time you are wandering along the High Street in Eaton Bray, look at the people you pass very carefully and try to guess whether they are in the Tennis Club. The chances are that for every 19 people you see, one will be a member, for of the 2,500 villagers, 130 have pledged themselves to our club for the year. Just imagine that, one in every 19 people, so in the village shop at any particular time there could be, oh, say half a member. A wild night out in Café Masala could see three members lurking within, whilst the typical Village dance at the hall could reveal seven or eight of us, or probably a lot more if we're organising it. We are everywhere; in the chip shop, the hairdressers, the off licence, the pub (quite often, actually) constantly on the lookout for an opportunity to whip out our racquets and knock some balls around.

The reason I cite membership numbers is because we recently held our most successful recruitment drive ever. The Play Tennis Day up at the courts in June attracted over 100 people who braved a variety of seasons in one afternoon to attend the official opening of our newly re-surfaced courts. They enjoyed tennis taster sessions, my infamous haute cuisine barbecue with new extended menu (hotdog, burger, cheeseburger, all with options of onions and/or half portions, giving an amazing 12 possible pricing combinations and that's before you choose from the four sauces on offer – what other club gives you 48 food options at any of their events?), anyway where was I, oh yes and local MP Andrew Selous came along to try his hand against some of the youngsters before officially declaring our courts 'open'. We signed up 26 new members during the afternoon – an all time record for one day – and we also announced the re-surfacing and floodlighting of our third court later this year. We've put the all-weather 35,000 seater stadium with retractable roof, multi-storey car park and dual carriageway access up School Lane on hold for a while as our Vietnamese financier Phut Pholt failed to come up with the necessary dosh having re-directed most of it to West Ham United to pay for some Argentinian bloke who it turns out was never theirs anyway and now wants to go to Manchester United where he'll probably play in the reserves for ever. All most unsatisfactory and meanwhile our retractable roof is still on the drawing board at McAlpines.

We've had some very successful fund-raising events in the past, and the recent village carnival was no exception, providing that the actual amount isn't too important. Our stall consisted of a large board with an even larger round hole, through which contestants had to throw four tennis balls from about five feet away, and if they got three or more through then they won their money back and a packet of sweets. The cost of all this fun? 20p a go. The number of people who won? Virtually everyone. It was almost impossible to miss. Even with your eyes closed and both hands tied behind your back. We ran out of sweets and had to bring in an emergency supply of pens and then ran out of them too. We ran out of money pretty soon afterwards. Fortunately our Treasurer had the foresight to bring along some used tubes of balls which we hastily sold for 50p a tube and then hurriedly packed our stall away before any more punters could come along and wipe us out again. After much counting and double counting late into the evening, our treasurer was delighted to announce that after five hours

work involving six people, we had made the princely sum of £9.47. Unfortunately that's before we've paid the carnival committee for the pitch, so here's hoping it's less than a tenner or we're all in trouble, and that third court might have to wait another few months!

For any further information about the club, including when we get together for our social tennis sessions up at the School Lane courts, or our various activities, please call either Chairman Ross Bagni on 01525 221411, Coach Nick Boys on 07810 832774, or if they're all out and I'm not sat outside the chip shop with my cap in hand begging for a few pence to pay the fete committee, me, Andy Cross, on 01582 477114.

PS: We all learnt from this. Next year, smaller hole, bigger balls and 50p a go, with no prizes except the satisfaction of having won. Should have them flocking in. We should make a tenner at least!

---

## **Eaton Bray Methodist Church**

Our summer Garden Fete was a most successful event enjoyed by all. Special thanks go to Jane, James and Nikki Mcfarland for hosting the day in their lovely home and garden. Thank you also to everyone who came along and supported us and to all members and friends for their hard work beforehand, during and after the fete. A total of £1094 was raised and this has been shared between the Chernobyl Children Life Line and Chapel funds.

On Saturday September 8<sup>th</sup> our Chapel will be taking part in our Circuit Pilgrimage, as part of our Circuit Charles Wesley Day. This will be an opportunity to visit the Churches in the Chiltern Downs Circuit and see displays of their history and their life today. From 10.00am until 12.noon you can visit The Square, Sundon, Trinity, Luton Road, Harlington and Linslade Churches and from 1.00pm until 3.00pm, Eaton Bray, Edlesborough, Dagnall, Toddington, Trinity and Harlington. We can promise you a very warm welcome at all of our churches. Following the Pilgrimage there will be a Faith Tea at 5.00pm in the Square Methodist Church Dunstable. ( Everyone is asked to take along some food to share.)

To conclude the day's celebrations, at 7.00pm, Mr. Mark Topping will perform a drama entitled "Charles Wesley: My Own Familiar Friend". This will explore the life of Charles Wesley to show something of the whole person and not just the gifted hymn-writer.

Our Harvest Supper will be held on Saturday September 22<sup>nd</sup> and tickets will be available from church members.

The Harvest Festival Service will be on Sunday September 23<sup>rd</sup> at 10.30am and led by Rev. Vindra Maraj-Ogden together with our Sunday School. All Harvest gifts will be distributed as previously, the dry/package goods to Crombie House in Leighton Buzzard, fresh produce will be purchased by donations and the proceeds and the offertory given to the Methodist Relief and Development Fund and our Chapel. This is always a very special service and we invite you to join us.

We resume our monthly lunches on Saturday October 13<sup>th</sup> at 12.noon until 1.30pm when the chosen charity will be the Keech Cottage children's hospice. Do join us and enjoy a tasty lunch in friendly surroundings and help to support a worthwhile local charity.

# Dagnall School

A Buckinghamshire co-educational school

For 4-7 year olds



**Ofsted 2003**

Pupils of all abilities make good progress and achieve well. Standards are consistently high in English, Mathematics and Science. The partnership with parents and the contribution of the community to pupils' learning is excellent.

**Dagnall school offers**

- small classes with high quality teaching
- a secure and caring environment where each pupil is seen to be an individual and not just one of many

Each child is encouraged to achieve to the best of their ability and to develop an eagerness to acquire knowledge and become lifelong learners.

Come and visit our friendly school, meet our lovely children and dedicated staff.



Leadership in the Community  
awarded 2005



Awarded for a third  
time in Oct 2006

Website [www.dagnall.bucks.sch.uk](http://www.dagnall.bucks.sch.uk) Tel & Fax 01442 842473

e-mail [office@dagnall.bucks.sch.uk](mailto:office@dagnall.bucks.sch.uk)

# Art & Soul

Furniture  
Interior Accessories  
Individual Gifts  
& Original Artwork

(Commissions undertaken)



41 Western Road · Tring · Herts · HP25 4BQ

tel: 01442 822219

[www.artandsoul-tring.co.uk](http://www.artandsoul-tring.co.uk)

## COFFEE TAVERN

High Street, Eaton Bray

Hall for hire suitable for  
approximately 50 people with  
kitchen facilities available.

Also two smaller rooms ideal  
for committee meetings

FOR BOOKINGS:  
PHONE SYLVIA HIGNELL  
ON 01525 220891

# Absolutely Plastered



DOMESTIC/COMMERCIAL, CLEAN AND RELIABLE SERVICE,  
FREE ESTIMATES, FRIENDLY ADVICE

- \* Plastering & Coving
- \* Floor Screeding
- \* Pebbledashing & Rendering
- \* Dry Lining
- \* Cornices & Mouldings
- \* Insurance Work Undertaken

CALL NICK CONWAY ON

Mobile: 07751 830716

Tel: 01525 221877/01442 269565

26 School Lane, Eaton Bray, Dunstable, Bedfordshire LU6 2DT



## Illustria Kennels & Kathotel

**Mick and Denise Garrod**  
Proprietors

Offer your pet a fully licensed Dog  
and Cat boarding service

Purpose-built Dog kennels

Individual Cat chalets with  
outdoor exercise runs

All in pleasant country surroundings

**WELLHEAD BUNGALOWS,  
TRING ROAD,  
DUNSTABLE,  
BEDS LU6 2JU  
TELEPHONE:  
(01582) 665343**



## Neil Hodson Associates Consulting Structural Engineers

### 24 HIGH ST TRING

OFFER A COMPREHENSIVE RANGE OF  
**PROFESSIONAL BUILDING DESIGN,  
ADVISORY AND DRAWING SERVICES**

From plans for domestic extensions to  
multi-storey offices, commercial  
buildings and factories.

Structural surveys, site surveying,  
advice on building defects and  
Feasibility Studies

Planning Applications and Building  
Regulation Consents obtained.

**Tel 01442 890894 OR  
Edlesborough 222462**

## KEITH GRADLEY ELECTRICAL

83 High Street, Eaton Bray  
Tel: Eaton Bray 222303  
Mobile: 07976 640869

For all Domestic, Commercial and  
Industrial Wiring and Plumbing  
Storage Heaters, Showers etc.  
Security Systems Installed  
Test and Inspections  
Free Estimates and Advice

## ALAN BARNARD BUILDING REPAIRS

**40** ESTABLISHED 1967 **40**  
**NO JOB TOO SMALL**

- ALTERATIONS & REPAIRS
- NEW KITCHENS & BATHROOMS
- BUILT IN WARDROBES
- PAINTING & DECORATING
- U.P.V.C FACIAS & SOFFITS
- WOOD OR U.P.V.C DOORS & WINDOWS
- WOODWORK

**20 WELLHEAD ROAD  
TOTTERNHOE, BEDS**

**01582 609726 & 07774 247658**

## YOUR LOCAL DRIVING SCHOOL

### Mini Manoeuvres

**Competitive rates • Brand new mini  
Patient, friendly instructor  
Discount for block orders  
Available 6 days a week • Pass plus**

**For more information call Kevin:  
01525221519 07931535519  
www.minimanoevres.co.uk**

## J.G.S. Metalwork

### Specialists in Gates & Gate Automation

Balustrades • Security Grilles • Railings

Curtain Rods • Weathervanes

Call in to discuss your ideas

Tel: 01525 220360 Fax: 01525 222786

High Street, Edlesborough LU6 2HS

[www.jgsmetalwork.co.uk](http://www.jgsmetalwork.co.uk)

enquiries@jgsmetalwork.co.uk

## HAND CRAFTED KITCHENS AND FURNITURE

Natural finish & painted  
featuring hi-tech accessories

### KITCHENS BATHROOMS BEDROOMS

Tables, Chairs, Dressers,  
Wardrobes etc...

All in solid wood - Oak,  
maple or reclaimed pine.



### SOLID WOOD FLOORING & DOORS



Our business has been built on design, originality, practicality  
and our experience of quality and services.

41 Western Road · Tring · Herts · HP23 4BQ  
Tel: 01442 822219 [www.artandsoul-tring.co.uk](http://www.artandsoul-tring.co.uk)

## Pressing Need

### Ironing, Laundry & Dry Cleaning Service

Free Collection & Delivery

from home or office

Executive Shirt Service (Wash & Pressed)

Duvet Service (washed and dry)

For more information or to book a collection

call 01582 667332 or 07885 320042

or email: [ironout@aol.com](mailto:ironout@aol.com)

## VANSAR BLINDS

Domestic and Commercial Specialists  
In all types of Blinds and Awnings

Family Business est. since 1984

- ◆ Vertical
- ◆ Venetian
- ◆ Rollers
- ◆ Wood Weave
- ◆ Roman
- ◆ Pleated
- ◆ Wood Venetian
- ◆ Conservatory Blinds
- ◆ Patio Awnings

**For a Friendly & Reliable Service  
Free Measuring and Quotations**

Supply and Fitting  
Contact Mark Allen

on

01525-220477

07711 257473

Weddings \* Birthdays \* Anniversaries  
 Funerals \* Social Functions  
 Corporate Contracts \* Balloons  
 Fashion Jewellery \* and much more ...



For all your floral requirements

Full Teleflorist member deliveries worldwide

Opening Times

Monday – Thursday	9.00 am – 4.30 pm
Friday	9.00 am – 6.00 pm
Saturday	9.00 am – 1.00 pm
Sunday	closed

2 High Street, Edlesborough,  
 Beds, LU6 2HS  
 Tel. 01525 221920

Email: [Sam@budsofmayflorist.co.uk](mailto:Sam@budsofmayflorist.co.uk)

**MICHAEL HUBBINS**

**TELEPHONE ENGINEER**

Installation of Telephone Extension Sockets  
 Digital, Satellite & Internet Sockets

Also Domestic Electrical Work Undertaken

**Tel: 01582 471648**

**Mobile: 0771 8834851**



**Stephen D.**

**Janes**

**Est. 1982**

**CARPENTRY, JOINERY  
 KITCHENS FITTED  
 PROPERTY MAINTENANCE  
 TELEPHONE: 01525 220649**

**PA PLUMBING**   
 Mob: 07812 085170

- Bathrooms Fitted
- Emergency Call Outs
- Burst & Leak Repairs
- Insurance Work
- All Work Guaranteed
- No Job Too Small
- Quick Reliable Service
- Free Estimates
- All General Plumbing

**01582 604070**  
 40 Westfield Road, Dunstable, LU6 1DH

**Anne Johnson D.O.**

*Registered Osteopath*

6 Moor End, Eaton Bray

**01525 221958**

**07957 250682**

Daytime and Evening  
 Appointments Available



**REFLEXOLOGIST**

**MARYLYN AUBURN, M.A.R.**

Leighton Road, Edlesborough

Telephone: 01525 220030

Member of the Association of Reflexologists



**Aerial & Satellite Systems**

Tel: 01525 237498

Mobile: 07970 260518



[www.digitaltelly.tv](http://www.digitaltelly.tv)



# Edlesborough School



***Choosing the most appropriate school for your child is a very important decision***

Edlesborough School is a co-educational village school for children from 4 to 11. We provide the benefits of a continuous primary education and the broad experience of a highly professional and caring staff. Our aim is to help all children achieve their maximum potential as individuals and as members of society.

***'Overall academic standards are very high'***

***'Pupils make very good progress'***

***'Pupils are very well behaved, want to learn and work hard to meet the many challenges they are given'***

(OFSTED 2003)



We would welcome the opportunity to show you round our friendly school.

Please ring Janet Hatfield on 01525 220431

Fax 01525 221819 [www.edlesborough.bucks.sch.uk](http://www.edlesborough.bucks.sch.uk)



INVESTOR IN PEOPLE

## Salvation Sound. . . . June 2007

The Weather.... long range forecasters told us of the long hot summer we should expect.!! Then came the rains.... Patience Strong wrote;

"A sudden shower burst forth from the skies upon the dusty lane -  
In gardens thirsty flowers looked up, and sipped the cold sweet rain -  
Beneath a tree's green parasol, I found a sheltered place  
Where wet leaves dropped capricious kisses on my upturned face -  
The storm swept like an angered god across the distant hill -  
Defenceless in it's path, the mighty trees bent to its will;  
A cottage door swung open and a woman rushed outside,  
To gather in her sturdy arms the washing she had dried.

A man went by - a man of earth - bronzed by the sun's deep stain -  
He touched his cap and smiled, and said, "A lovely drop o' rain!  
This be a god-send for us folks - this be just what we need -  
It's good for man and good for beast and good for soil and seed".

And I, beneath the dripping tree remembered that in towns,  
Men greet the gift of God's good showers with fretful words and frowns;  
But wise and patient earth-brown men don't grumble or complain -  
They say a courteous "Thank you" for a "lovely drop o' rain."

Thunderstorms - rain coming down in torrents, day after day,----they are the many unexpected emergencies which arise. - We cannot hide from the storms of life, we have to face them, but when we know there is a safe haven at the end we can stand more hardship than when we have no place to go. God's word is like a seed, when it is dropped into good ground, it grows. It is watered and warmed by God's love, grows and produces fruit.

No farmer keeps waiting for the sun to plant his crop, nor watches the clouds to see if they might foretell rain. The conditions may not be all he desires but when the time of harvesting arrives, he just gets on with the job.... Jesus calls each one of us to go into the world and sow seed; the Word of God for the reaping time will come, sooner than we expect.

Summer is passing by, and Autumn is creeping in...

WEATHER...

All the blessed mornin' it was rainin' 'eavens 'ard,  
Pourin' down the water-shoots and dancin' in the yard;  
Blowin'? It was blowin' all the blessed arternoon  
Through the attic keyhole like a fiddle out o' toon!  
Chimley pots went crashin' and lost us a tile or two,  
Things got pretty dampish where the wet came drippin' through.  
What's that matter now the sky's blown clear ?  
What's that matter now the blessed evenin's here.?  
Rainspots on the winder ? So there be, without a doubt;  
But what's that matter now, 'cos the blessed sun's come out

## **DATES FOR YOUR DIARY**

**SATURDAY AUGUST 18th**

**10am -12 noon**

**at The Salvation Army Hall**

**Booth Place, Eaton Bray**

**A Mammoth Bric-a-Brac Sale and**

**Coffee Morning**

**SEPTEMBER 30th**

**HARVEST FESTIVAL SERVICES**

**11am and 6pm**

**All will be most welcome**



### **Edlesborough W.I.**

Two members were thanked during the business section of our last

meeting: Ann Brinklow for arranging the cheese and wine supper in May, ND Kathie Froud for the visit to Dobbies Garden Centre. Dates for forthcoming events were given, and plants presented to members celebrating June birthdays.

Mr John Chalkley was introduced as our speaker. He gave a demonstration of painting in pastels, with Margaret Laing as his model. John told us he had practised by doing self portraits in front of a mirror after studying at Hornsey College. He explained each stage of his painting of Margaret's portrait, beginning with an axis line and followed with lines for different parts of the face and head. Using these guidelines he put in the bridge of the nose, followed by edge of cheek, lips, eyebrows, eye sockets and, gradually, all parts of the face and head. Once this was completed, John started on the colour tones by stroking them in gently from light to dark. This included eyes, eyebrows and hair. After adding the colour of Margaret's spectacles and blouse, John shaded in the background. The finished portrait was then sprayed with hair-spray.

John is a really talented artist, and it was fascinating to watch the portrait gradually taking shape. The likeness to Margaret was very good, apart from portraying her as quite serious. Margaret is a lady who smiles a great deal of the time, so we don't often see her as depicted in the portrait. However, it was an excellent painting, and we thoroughly enjoyed watching John. Our thanks go to him and to Margaret.

Later in the month a number of us enjoyed an evening meal at the Plough Inn, Wingfield. It was a really happy evening, and we thank Kathie Froud for making the arrangements.

Val Harris

## **The Salvation Army, Booth Place Weekly Activities**

### **Sunday**

Sunday School	9.45am
Morning Service	11.00am
Evening Service	6.00pm

### **Monday**

Games Night (Ages 5-8)	4.30pm
------------------------	--------

### **Wednesday**

Home League (Ladies Meeting)	2.30pm
------------------------------	--------

### **Thursday**

Young Ladies Fellowship  
(Last Thursday in every month)

### **Friday**

Young People	5.00pm
--------------	--------

(Singing, tambourine & recorder practices)

## **NORTHALL BAPTIST CHAPEL**

### **Chapel Lane, Northall**

(just beyond the speed limit signs on the road to Leighton Buzzard)

Everyone is welcome to our Sunday worship each week between 11am and 12.30pm including tea/coffee and time to talk together  
For more information contact: Steve and Helen Orchard 01525 373106

There has been a Baptist Chapel in Northall for more than 200 years. Today we continue to seek to worship God, serve him in our daily lives and support and encourage one another in the difficult and the joyful times.

## **EATON BRAY VILLAGE HALL**

**LARGE & SMALL HALL,  
MEETING ROOM, STAGE,  
KITCHEN, LARGE CAR PARK**

**SUITABLE FOR ALL KINDS OF  
EVENTS:-**

- WEDDING RECEPTIONS
- CHILDREN'S PARTIES
- KEEP FIT, BADMINTON
- STAGE PLAYS ETC

**TELEPHONE TO BOOK  
YOUR EVENT ON:-**

**01525 222831**

**KEYS TO BE COLLECTED  
BY ARRANGEMENT**

**Gary Witts  
Approved Driving Instructor**

**01525 38 39 40**

**07748 305859**

**gary@passyourtest.org**

**www.passyourtest.org**

**Patient, friendly and reliable tuition  
Pass Plus Registered  
Motorway / Refresher Lessons available  
Member of the Driving Instructors Association**

## **DOMESTIC ELECTRICIAN**

**JOHN BRODRICK**

*FULLY QUALIFIED*

*NICEIC REGISTERED*

*FRIENDLY, PROFESSIONAL, RELIABLE*

*LOCAL SERVICE*

**01525-223081**

**07884-471565**

*CSL*

*Charvet Services Ltd*

## *Plumbing & Heating Engineer*

*40 years experience/CORGI registered*

*Full central heating installation, boiler changes, all heating repairs*

*Landlords Gas safety certificates*

*Complete plumbing service - bathroom refurbishments including tiling  
and electrical work*

*Underground drainage/blocked pipes etc.*

*Free Quotations • No call out charge • No payment until complete satisfaction*

**Telephone: 01525 221052 - Mobile: 07721 625887**



# Abbeywood

building • construction • maintenance

*"A company with high standards of workmanship providing good old fashioned service"*

**OFFICE:**  
**01525 270045**

**MOBILE:**  
**07946 857323**

- EXTENSIONS • LOFT CONVERSIONS • PATIOS
  - INTERIOR & EXTERIOR PAINTING/DECORATING
  - FITTED KITCHENS/BATHROOMS/BEDROOMS
  - ALL GENERAL BUILDING WORK
- *Free estimates and advice*
  - *Based locally with a friendly approach*
  - *Committed to giving you what you want without problems*

## All Your Storage Needs Met

Clean, Dry and Secure Warehouse  
Warehouse Storage Available for  
Short/Long Term

Archive Boxes, Liquidated  
Companies, Shredding available.  
Household & Business items

Collection & Delivery  
Boxes and other packing materials  
available if required.

## Dagnall Storage Company

Thameside Construction  
Unit 2

Grove Farm  
Ivinghoe Aston  
Beds LU7 9DF

**Tel: 01525 221062**

**Fax: 01525 221857**

Email: [dagnall@thamesideltd.co.uk](mailto:dagnall@thamesideltd.co.uk)

# Kingsley

## GARAGE DOORS

- All types & makes of door supplied & fitted
- Steel, timber, glass reinforced polyester (GRP)
- Sectional doors - an ideal solution for short driveways

*Electric operators from £300 fitted*  
Automate your existing garage door

**PROMPT REPAIR SERVICE**

**CALL 01525 221058**

# **Edlesborough Parish Council**

## **(including Edlesborough, Dagnall and Northall) News**

### **Village Freighter Refuse Collection 2007 – IMPORTANT NOTICE**

AVDC have informed the Parish Council that as from 1st July 2007 as a result of implementation of the Waste Electrical and Electronic Equipment (WEEE) directive the Village Freighter Collection Service will no longer be permitted to accept electrical and electronic waste as part of it's service, they must be treated separately and are subject to producer responsibility regulations. Prohibited electrical and electronic goods include, but not exclusively, fridges, freezers, washing machines, televisions, computers, fluorescent tubes, toasters, microwaves, lighting equipment, toys and electrically powered novelty items. WEEE goods can be taken to the Household Waste Recycling Centres or authorised take-back centres such as stores and retailers where the goods were originally purchased.

### **Edlesborough Memorial Hall**

John Bercow MP, District Councillor Terry Jones, Parish Councillors and parishioners attended an Open Morning in June to celebrate the completion of the new Memorial Hall. A plaque has now been received from AVDC to acknowledge it's funding along with the Lottery 'Awards for All'.

### **Carnival**

The Parish Council congratulated the Carnival Committee on their financial achievement and despite the appalling weather conditions prior to the event The Green has managed to cope very well.

### **Road Closure**

The B4506 Ringshall road will be closed during September to early October 2007 to undertake remedial repairs, diversion signs will be erected.

### **Police matters**

PCSO Jackie Dodson had given a report at the June Parish Council meeting. Due to the call centre of Thames Valley Police having difficulty in dealing with incidents reports in the Parish (caused by conflicting post codes) parishioners were recommended to dial 999 instead of the 0845 8 505 505 number. A joint meeting is being held between Thames Valley Police, Hertfordshire and Bedfordshire Police in an endeavour to have a more closer liason in dealing with incidents which occur on the boundaries of the three districts. Edlesborough, Dagnall and Northall fall into this category.

### **General Matters**

The Parish Council are in the process of studying various issues of Transport, Local Development Framework, Gypsy and Traveller Accommodation needs in Buckinghamshire, signage and freighter strategies for Church End, Edlesborough. Dragons teeth are now in situ.

Anglian Water will be carrying out an analysis of the assets in the area, sewers, pumping plant etc. and consider the reported repeat flooding incidents which have periodically occurred over many years. Inspections are being made by representatives of AVDC of residents recycling methods, anyone examining residents' refuse should be able to produce relevant identification.

Lin Sargeant – Clerk to Edlesborough Parish Council: Tel. 01525 220859

E-mail: [parish.council.clerk@edlesborough.gov.uk](mailto:parish.council.clerk@edlesborough.gov.uk) Website: [www.edlesborough.gov.uk](http://www.edlesborough.gov.uk)

<p><b>Edlesborough</b> <b>Parish Council Meetings</b> 3rd Thursday of every month 7.30pm Memorial Hall Next meeting: Thurs 16 Aug 07</p>
--

## SAMARITANS

Whoever you are, Whatever you're dealing with, Talk to *SAMARITANS*

Call: 08457 90 90 90 (24 hours a day, every day)

Visit: 161 Fishermead Boulevard (call first), Email: [joe@samaritans.org](mailto:joe@samaritans.org)

The Samaritans Vision is one where fewer people die by suicide because people are able to explore their feelings, and people are able to acknowledge and respect the feelings of others. In the arena of emotional health, Samaritans is the only confidential support service that's available all the time, everywhere.

Our service is essential, there are 6,300 suicides a year in the UK, there are 2 suicides per day by young people under the age of 25, every hour 3 young people self harm. We can't put an end to this, but we can provide the opportunity for these people to explore their feelings and try to find a way through periods of crisis in their lives.

We need your support to provide this service, in the UK, there are 18,300 volunteers that provide 3 million hours of free listening. If this was a paid service, it would cost £28.5 million per year. We need your help. If you can spare some time to help others by being a volunteer listener, we will provide training in essential listening skills (call 01908 667777 to volunteer). If you feel that being a listener would be too challenging for you, then why not help us by supporting our publicity stands, help us with providing talks and communication activities, help us with our fund raising activities. There are many ways you can support us, call 01908 667777



---

### Eaton Bray WI

We welcomed our guest speaker Diane, and Venny from the charity 'Dogs for the Disabled' to our July meeting. Diane spoke to us about the work of the charity accompanied by Venny, a beautiful chocolate labrador, Venny and Diane help to promote awareness of the charities work, in helping disabled people to increase their independence and by training specially selected dogs to live and work with them.

Frances Hay founded 'Dogs for the Disabled' in 1986. Francis suffered from bone cancer and noticed that as she became more disabled her Belgian Shepherd dog helped over come some of her physical problems and seeming to know instinctively when Francis needed her. It was this special rapport that inspired Francis to realise a dog could help disabled people in many ways.

Dogs are trained in practical tasks such as opening and closing doors, helping a person dress, taking laundry out of the washing machine and switching lights on and off to name but a few of the tasks. The training starts at a year old using a reward based system and lasts for eight months.

In 1999 after a succession of temporary offices 'Dogs for the Disabled' were awarded a grant from the Lotteries Charity Board, this enabled them to develop a permanent training centre close to Banbury. Sadly Francis never lived to see the charity find its permanent home but the seeds of her idea had been sown and dogs for the disabled had a future.

Our next meeting is on Monday 3<sup>rd</sup> September at 7.30pm in Eaton Bray Village Hall for more info. please contact Sheila on 01525 221185



# Eaton Bray Lower School

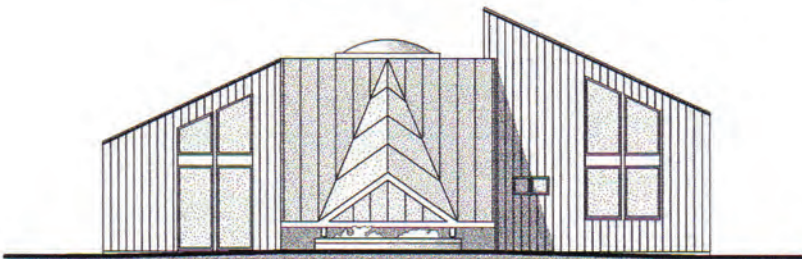
"The openness, warmth and mutual respect which permeate the School, promote a purposeful climate in which effective learning can take place" (Ofsted)

Please come and visit our friendly village school. Phone 01525 220468 or email [eaton@deal.bedfordshire.gov.uk](mailto:eaton@deal.bedfordshire.gov.uk)



**We have been awarded  
National Healthy School status**

**COMING SOON** - EBLS Nursery with extended School provision and wrap-around care in a modern, light, sustainable new building.







*“children are happy, settled and confident”*  
*“children have a strong bond with the staff team who respond to their needs appropriately”*  
*“children with any form of special need are very well supported in this group”*  
**Ofsted Nov, 2005**

*“All of the girls working at the nursery make it their interest to know each and every child and are aware of each Child’s character. Clearly the children are happy as on my duty as parent helper you hardly ever heard tears, and any arguments over sharing are quickly noticed and dissolved by excellent staffing.”* **letter from parent, 2006**

We Offer:

- A secure, child-friendly environment five mornings a week for children 2½ years to school age.
- Enclosed outdoor play area.
- Close links with local schools and the community.

To find out more, or to arrange a visit to our setting, please telephone:

**Mrs Ann Tobin (Playgroup Leader) on 07816 358 342**

## Contemplating an office move, refurbishment, fit out or purchasing new office furniture?

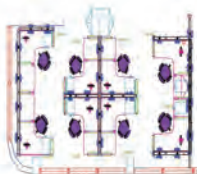
**FREE CONSULTATION ON ALL OFFICE & COMMERCIAL INTERIORS PROJECTS.**

**Independent advice** from professional consultant with over 20 years industry experience and contributor to leading interiors industry publication.

### AREA'S OF EXPERTISE INCLUDE:

- **Product Selection & Contract Negotiation**
- **Move Management Logistics**
- **Project Management**
- **Health, Safety & Disability Discrimination**
- **Pan-European Experience**
- **Published Industry Authority**

Review our profile @  
[www.knowledge-counsel.co.uk](http://www.knowledge-counsel.co.uk)  
and contact Roger Croft



**TECHNIQUE**  
CONSULTANTS (UK) LTD

Email: [roger@techniqueconsultants.co.uk](mailto:roger@techniqueconsultants.co.uk)  
Tel: 01525 222935 - Mobile: 07836 269753

## Dagnall News

### Over 60's

Our July meeting is the Annual Garden Party by kind invitation of John and Chris Yorke. We are hoping for good weather on the 24<sup>th</sup>, by the time Focus is published we shall know whether we were lucky!

Our August meeting will be on the 29<sup>th</sup>, which is a WEDNESDAY. We shall again be visiting the Ferryman Inn near Abingdon for lunch and entertainment. The coach will leave from Dagnall Village Hall at 9.30am.

In September we are again out for lunch, this time at the Bell in Winslow. The coach will leave Dagnall at 11.30am.

Also during September, on the 15<sup>th</sup>, we have the concert in the Village Hall when the visiting artiste will be Jean Martyn with her electronic organ, to give us another recital like the one she gave in March last year. Tickets at £6 each including refreshments are available from Roy Castledine. Tel 01442842048.

### Dagnall Church

Saturday 8<sup>th</sup> September - The Methodist Circuit is having A Pilgrimage to Celebrate 'Charles Wesley Day'. An opportunity to visit all the churches in The Chiltern Downs Circuit and view displays regarding their history and their life today.

Dagnall church will be open from 1.00pm. to 3.00pm. Come and enjoy a cup of tea and look around.

### Dagnall School

We now have our timber trail installed thanks to the fundraising efforts of FODs. Thank you to everyone. The children are really enjoying using it!

The lead up to the summer holiday was very busy. The whole school went to the Ivinghoe Study Centre and the Pitstone Museum, experiencing lace making, washing clothes the Victorian way and grinding the corn to make flour at the water mill.

The children had ten eggs to care for prior to hatching. All ten hatched into fluffy chicks and caused great interest and excitement, not only among the children and parents, but staff too!

At the Dagnall fete the children performed Country Dancing and the Hakka. The children also danced at Edlesborough Carnival.

By the time you read this the school will have broken up for the summer holidays. May I wish you all a happy, peaceful holiday and say a big THANK YOU to everyone for their tremendous support during the last year.

### Dagnall Village Hall

See the separate report on the Fete,

### Christian Aid Week

The amount collected around the village for Christian Aid Week was £320.44. Thank you for your support.

Wendy

### IS YOUR COMPUTER GIVING YOU A HEADACHE?

For all your home or business  
computer problems

Contact Dave at A-rama (UK) Ltd at  
The Book Castle, 12 Church Street,  
Dunstable, Bedfordshire LU5 4RU

Tel: 01582 605670 (9.00-17:30 Mon-Sat) or  
Mobile: 07850 777944 (9:00-21:00 Mon-Sat)

## Report on Dagnall Village Fete 12<sup>th</sup> May 2007

A big Thank You to all who supported the Dagnall Village Fete this year. The new Banner in the centre of the village made sure that no one could say they didn't know about it! A huge total of £3786 was raised and congratulations go to Mrs Mandy Taylor who won the "Guess the Final Total" sweepstake with a prize of £30.

The purpose of the fete is to raise money for the Village and your efforts provided £1750 for the Village Hall, £1500 for Dagnall School, £250 to help towards the shortfall in the Church Extension Fund. In addition, £286 was donated to the Iain Rennie Hospice at Home in memory of Val Wood, a Committee Member.

None of this would have been possible without the hard work put in by all who helped on the day, manning stalls, serving teas, cooking burgers, erecting tents [and taking them down] as well those who started the planning back in February. Thank you also to our many sponsors who provided prizes for the Draw and donated many valuable items for the Auction, as well as lending tents and marquees. Local businesses and individuals were unstinting in their giving.

The arena shows from the Children of Dagnall School, the Under Fives, as well as the Dunstable Sea Cadets not forgetting the Silver Band all contributed to a very successful day.

Andrew Hunter.

Leighton Buzzard Drama Group  
Affiliated to the National Operatic and Dramatic Association

www.lbdg.org.uk

# FORGET-ME-KNOT

THE UNFORGETTABLE ADULT COMEDY  
by DAVID TRISTRAM

Robert Zeff is not the man he thought he was...  
...so who the hell is he?

"There is no better writer of funny plays than David Tristram"  
Chris Jaeger, Guild of Drama Adjudicators

Leighton Buzzard Theatre  
Thursday 27 - Saturday 29 September @ 8pm  
Tickets £8.50 (concessions £7.00)  
Box Office 01582 818801

## Bees on holiday!!

I finally managed to move the hives to the borage fields in Chalgrave by the end of the month. It was hard work but worth it. Bees like borage very much and work the blue flowers with avidity, however I cannot see much flow of honey into the hives at present, it has been raining so much. This is no good as July is a critical month for honey gathering, clover, bramble, borage, lime and many other plants and tree blossom are around. Strong colonies will bring a lot of honey in, but they also consume a lot in rainy days as well.

I hope to keep the hives in the borage until the end of the month, after which I will select a few of the young/strong colonies to take them to the heather.

I take the hives for the month of August to just outside Whitby to a place called Little Beck on top of the Yorkshire moors. It is four hours travelling through the night to keep the bees cool. Bees do not like to travel, the heat, movement and to find themselves in a new environment stresses them big time especially getting used to the new area.

Bees will identify the new terrain with their photographic memory and will use this information to navigate the area to and from the hive. They use features such as houses, roads, trees etc. as references, sometimes, removing a permanent feature such as a clump of trees especially if near the hive will throw them into confusion.

Bees have a flying range of three miles, although will fly to the nearest source of honey, so the general rule when moving hives is simple, three foot or three miles.

Anyway folks it is Whitby next, hmm I can smell the fish and chips just now!

PS. Village Carnival: Thanks to everybody that stopped for a chat and bought honey from the stall. It was a great day.

**Leighton Buzzard  
Hockey Club**  
*Celebrating 100 years of Hockey*



**WWW.LBHC.ORG.UK**

**OPEN DAY**  
**SAT 18th AUG (11am - 4am)**  
**@ Vandyke Upper School, Leighton Buzzard**

Looking for a new club, Returning to hockey or  
wanting to take up a sport?  
Come down for our Open Day! - **EVERYONE** welcome

6 a-side games, beat the keeper, penalty flick comp, refreshments followed by a  
BBQ @ our local club house

Interested? Mail us at: **openday@lbhc.org.uk**

**openday@lbhc.org.uk**

## Mark Janes Contacts

**Felt Roofing - All Roofing Repairs  
and Property Maintenance**

**FREE ESTIMATES**



**t: 01442 877528**

**m: 07841 343470**

**e: mark.janes3@btinternet.com**

**Established 25 years  
Approved Contractor  
for Local Authorities**

## *Beautopia*

*"aiming to meet all your beauty needs in  
a friendly & tranquil environment"*

*Dermologica Facials*

*Body Massage*

*Waxing*

*Manicure's & Pedicures*

*Tanning*

*Biosculpture Gel Nails*

*171 High Street*

*Berkhamsted*

*Herts, HP4 3HB*

*Please call Julie on: 01442 870065  
to request a brochure or to book an  
appointment*

*All Major credit cards accepted  
Gift Vouchers available*

## *Dominic Woolcott* Painter & Decorator



- Internal & External
- Plastering & Coving
- Insurance Work
- 20 Years Experience
- Competitive Rates

**For a professional job call:  
01525 229682 or 07747 042879**

## David John Harris



(Established 1992)

All Fencing Work • All Gates  
Paving • Patios  
Driveways • Shingle  
Hedge Setting and Cutting  
Grass Cutting  
Turving Specialist  
Exterior Painting Service  
Sheds  
Small Building Work  
Trees & Shrubs Supplied

**Tel/Fax: 01525 221745**  
**Mobile: 07889 143713**

## Vicky Waller



**YOUR DOG DESERVES THE BEST**  
♥ PUT VICKY TO THE TEST ♥

- Trained at the London Academy of Professional Groomers to the highest City and Guilds standard
- Sympathetic and gentle handling of all dogs

**NO CAGES**

Contact Vicky  
Telephone: 01525 222775  
[www.dogcare.co.uk](http://www.dogcare.co.uk)  
Email: [vicky@dogcare.co.uk](mailto:vicky@dogcare.co.uk)

## PROFESSIONAL CLEANING SERVICES

From a Christian, family-run company. Fully Insured.

OUR BUSINESS IS BASED ON HONESTY & SATISFACTION. A LARGE PERCENTAGE OF OUR WORK COMES FROM REFERRAL & RECOMMENDATION.



### **CARPET & UPHOLSTERY CLEANING**

FULL, FREE, NO-OBLIGATION SURVEY & QUOTATION PRIOR TO CARRYING OUT ANY CLEANING - PROVIDING SERVICE TO THE HIGHEST STANDARDS.

### **WINDOW & CONSERVATORY CLEANING**

-USING PURE WATER THROUGH WATER FED POLES.  
SAFE, MODERN, INDUSTRY APPROVED TECHNIQUES WITHOUT THE USE OF LADDERS! **MONTHLY CLEANING AVAILABLE**



### **PATIO & DRIVEWAY CLEANING**


REDUCE THE DANGERS OF SLIPPING IN THE WET OR WINTER WEATHER BY REMOVING MOSS AND OTHER DEBRIS - RESTORING COLOURS - MAKE YOUR HOUSE STAND OUT FROM THE CROWD!

**01442 250679 Murray's Cleaning Services**

*Let us take care of the cleaning so that your free time is leisure time.*

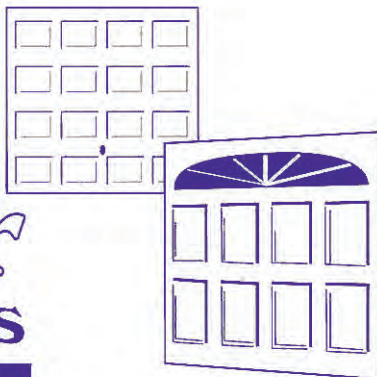
[www.murrayscleaningservices.co.uk](http://www.murrayscleaningservices.co.uk)

19 Broom Hill, Hemel Hempstead.



# Premier Garage Doors

**MANUAL & ELECTRIC**



## Quality Garage Doors

- ✓ SUPERB CHOICE OF DESIGNS IN METAL,  
WOOD AND FIBREGLASS
- ✓ ANY SIZE DOOR MADE TO YOUR REQUIREMENTS
- ✓ LARGE SELECTION OF SPARES & FAST REPAIR  
SERVICE AVAILABLE
- ✓ NEW OR EXISTING DOORS CONVERTED TO  
AUTOMATIC
- ✓ PROFESSIONALLY FITTED BY OWN EXPERT  
CRAFTSMEN
- ✓ PROMPT FREE ESTIMATES & ADVICE
- ✓ WE COVER ALL AREAS

- DIY KITS AVAILABLE
- INSURANCE WORK WELCOME
- COUNCIL APPROVED
- REMOTE CONTROL GATES ALSO  
AVAILABLE

**(EST 1984)**

**UNIT 7 SPARROW HALL FARM  
LEIGHTON ROAD, EDLESBOROUGH LU6 2ES**

**01525 220212 OR 01494 773391**

# Janes

## ELECTRICAL...



We stock a wide range of  
Electrical Appliances,  
from all the best brands  
From Fridge Freezers to Kettles

**FINANCE AVAILABLE**

**Subject to Status**

# FREE

## DELIVERY & INSTALLATION

**On all Major Appliances**

**With-in a 15 mile radius**

**For ease and convenience to you we can take your  
old Appliance away and dispose of it as well...**

## LCD TV's...

# FREE

**Delivery, Tune and  
Set-up is all part of  
our service...**



**4-8 High Street, Edlesborough, Dunstable, Beds LU6 2HS  
Tel: 01525 220208 Fax: 01525 222802**